

# V&V Reference Report

## L2 ASCDS Version : 7.6.9

Observation 3485 - L2 Version 001  
Chandra X-Ray Center

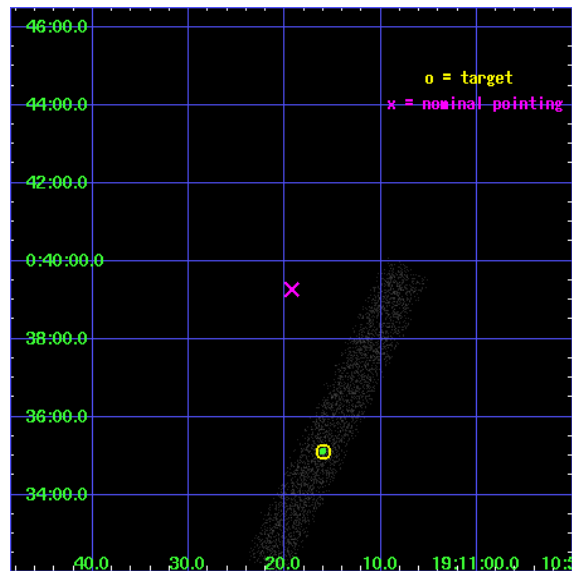
L2 Processing Date : Sep 16 2006

## Contents

<b>1</b>	<b>Front</b>	<b>2</b>
<b>2</b>	<b>OBI</b>	<b>3</b>
2.1	OBI . . . . .	3
2.1.1	Images . . . . .	3
2.1.2	Bias . . . . .	3
2.1.3	Parameters . . . . .	4
2.1.4	Events . . . . .	4
2.2	Compared Parameters . . . . .	5
2.3	Aspect . . . . .	6
2.4	Star Slots . . . . .	9
2.4.1	Slot 3 . . . . .	9
2.4.2	Slot 4 . . . . .	10
2.4.3	Slot 5 . . . . .	11
2.4.4	Slot 6 . . . . .	12
2.4.5	Slot 7 . . . . .	13
2.5	FID Slots . . . . .	14
2.5.1	Slot 0 . . . . .	14
2.5.2	Slot 1 . . . . .	15
2.5.3	Slot 2 . . . . .	16
<b>3</b>	<b>Point Sources</b>	<b>17</b>
<b>A</b>	<b>Summary</b>	<b>18</b>
A.1	Status . . . . .	18
A.2	Comments . . . . .	18

# 1 Front

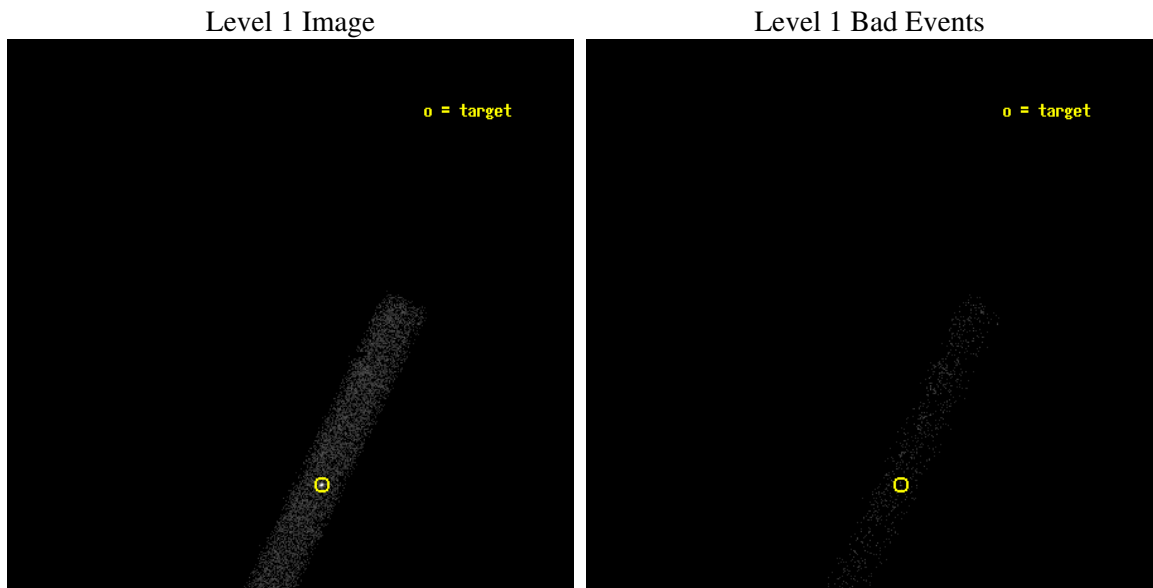
seq_num	400251
obs_id	3485
title	VARIABLE THERMAL EMISSION AND FEATURE FROM AQL X-1 IN QUIESCENCE
observer	Prof. Robert Rutledge
object	AQL X-1
dtcycle	0
cycle	P
ra_targ	287.816667
dec_targ	0.585
ra_nom	287.83032187186
dec_nom	0.65440934465111
roll_nom	115.59582544683
revision	2
ontime	7671.9590942264
livetime	6958.0619392585
ontime7	7671.9590942264
l2events	4888



## 2 OBI

### 2.1 OBI

#### 2.1.1 Images



#### 2.1.2 Bias

Chip 7



### 2.1.3 Parameters

obi_num	0
ascdsver	7.6.9
caldbver	3.2.3
date	2006-09-16T17:05:24
revision	2

sched_exp_time	7000.000000
ontime	7858.8017706573
ontime7	7858.8017706573
l1events	9830

### 2.1.4 Events

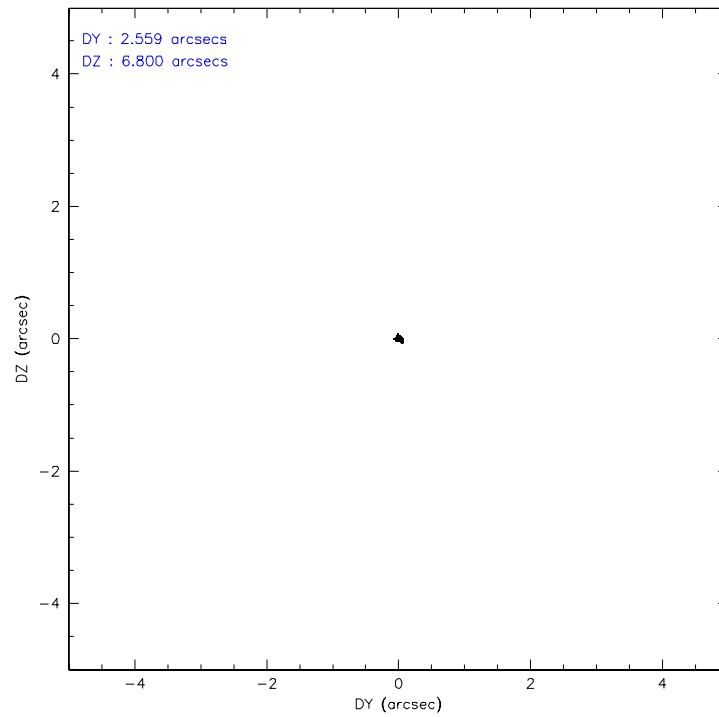
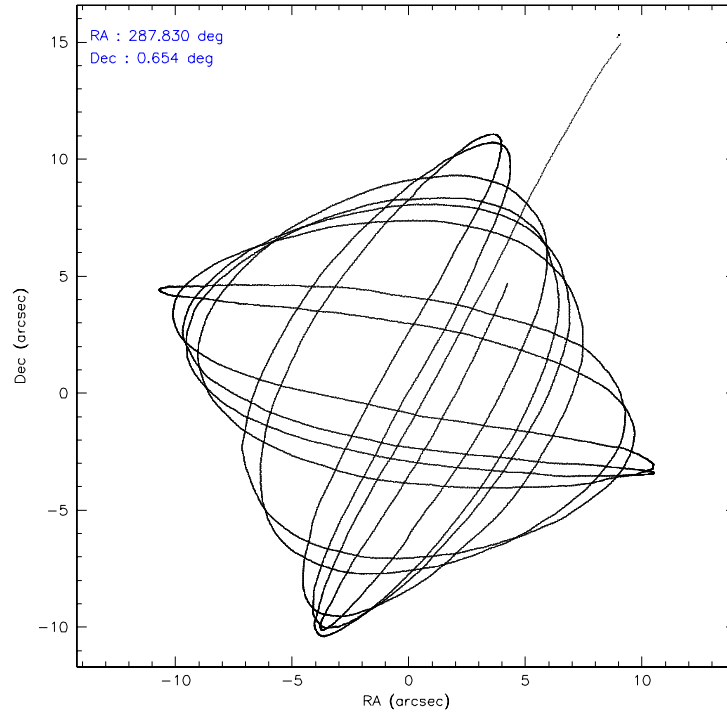
	<b>ccd 7</b>
level 1 events	9830
rejected events	4828
rejected %	49%

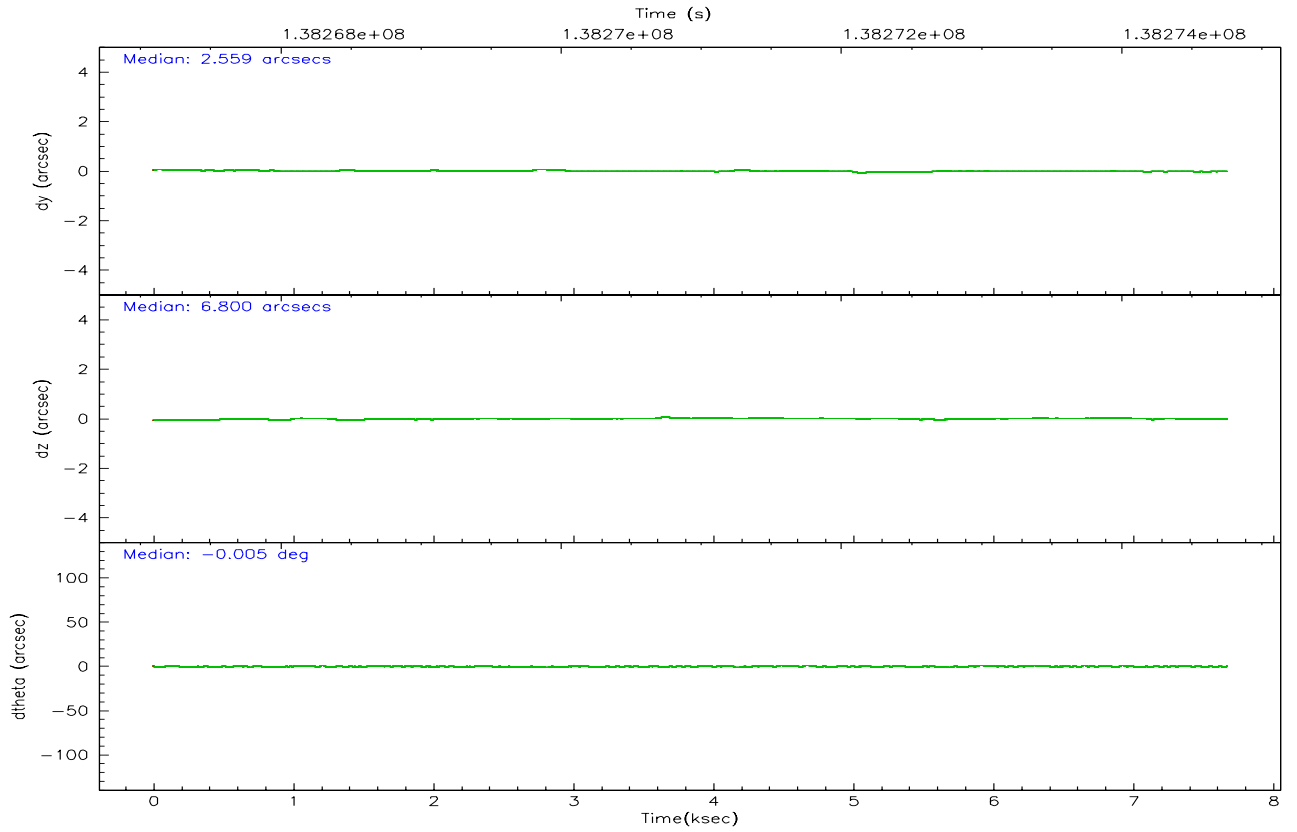
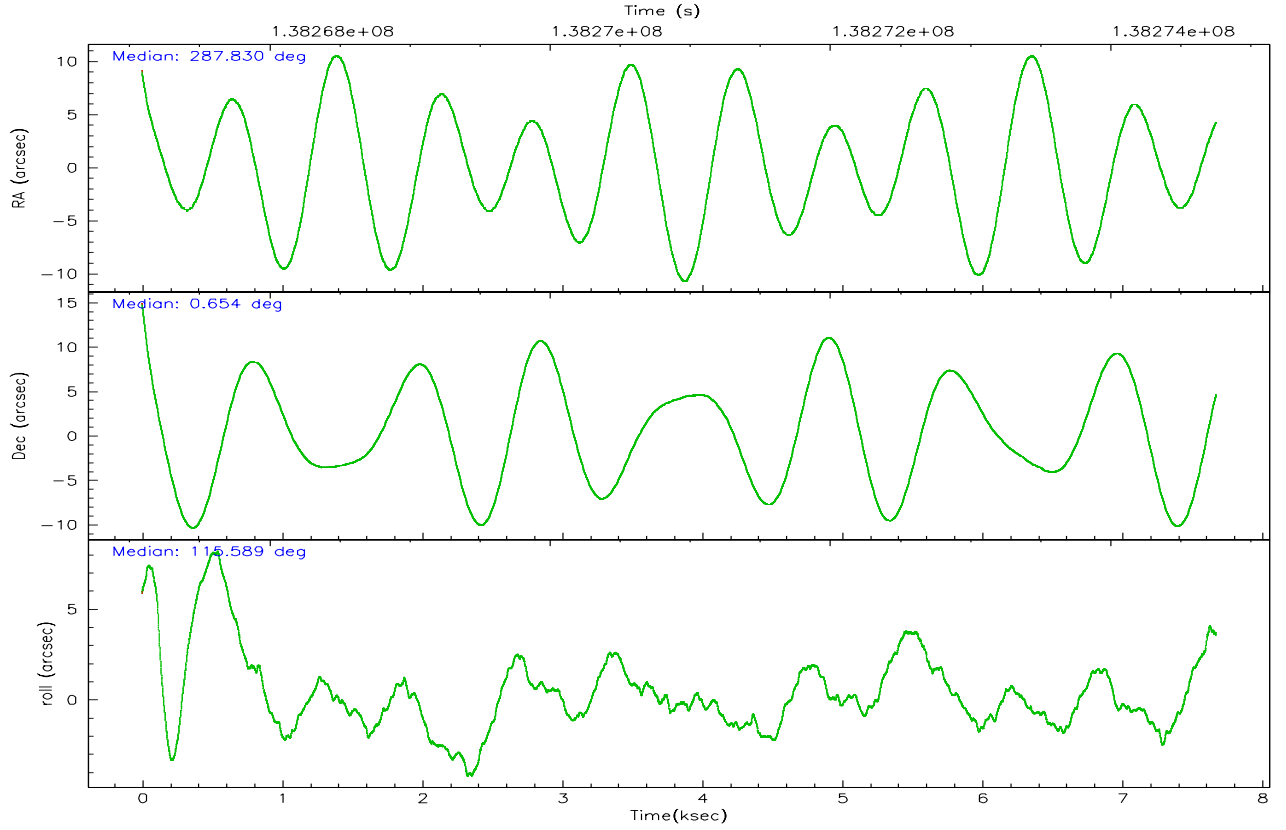
	<b>ccd 7</b>
grade 0 events	673
	6%
grade 1 events	9
	0%
grade 2 events	1152
	11%
grade 3 events	562
	5%
grade 4 events	573
	5%
grade 5 events	592
	6%
grade 6 events	2156
	21%
grade 7 events	4113
	41%

## 2.2 Compared Parameters

Parameter	Planned	Actual	Parameter	Planned	Actual
Instrument	ACIS	ACIS	Obspar format version number	6	6
Detector	ACIS-7	ACIS-7	Obspar file type	PREDICTED	ACTUAL
Grating	NONE	NONE	Obspar update status	NONE	UPDATED
Data mode	FAINT	FAINT	Number of optional ACIS chips dropped	0	0
Observation mode	POINTING	POINTING	On-chip summing requested	N	N
Pointing RA	287.853006	287.8303218718574	Subarray requested	CUSTOM	1/8
Pointing Dec	0.639379	0.654409344651105	Subarray start row	150	150
Pointing Roll	115.438941	115.5958254468318	Subarray row count	128	128
SIM focus pos (mm)	-0.684267	-0.6828225247311905	Alternating exposures requested	N	N
SIM defocus (mm)	0	0.001444936568705701	Primary exposure time	0.000000	0.4
SIM translation stage pos (mm)	-190.132523	-190.1400660498719			
SIM translation stage offset (mm)	0	0.00754346686406393			
Observation start time	138267756.184000	138266551.79918			
Observation start date	2002-05-20T07:41:32	2002-05-20T07:22:31			
Observation end time	138274756.184000	138275346.81204			
Observation end date	2002-05-20T09:38:12	2002-05-20T09:49:06			
Read mode	TIMED	TIMED			

## 2.3 Aspect





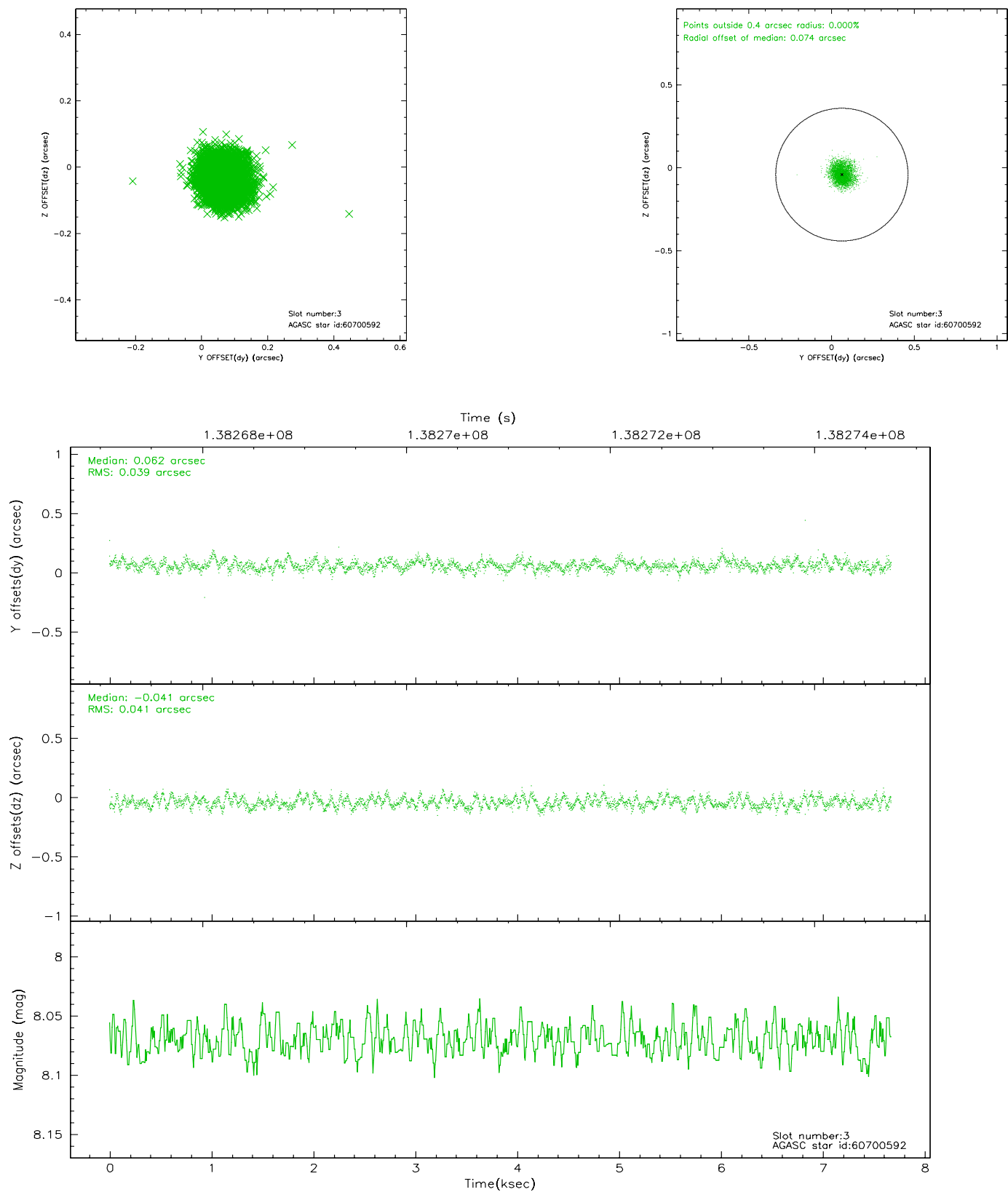
### Slot Statistics

slot	status	id	mag	n_pts	med_dy	med_dz	dr1	dr2	ra	dec	mean_y	mean_z
0	FID	ACIS-S-2	7.11	1871	-0.014	0.037	0.007	0.011	0.000000	0.000000	-755.19	-1727.93
1	FID	ACIS-S-4	7.20	1871	-0.075	-0.003	0.005	0.009	0.000000	0.000000	2157.67	179.78
2	FID	ACIS-S-5	7.24	1872	0.058	-0.025	0.007	0.010	0.000000	0.000000	-1807.03	174.23
3	GUIDE	60700592	8.07	3743	0.062	-0.041	0.060	0.095	287.530354	0.932002	1451.62	596.37
4	GUIDE	60708936	9.20	3742	-0.021	0.013	0.077	0.126	287.407925	0.924863	1618.01	1005.55
5	GUIDE	60702480	9.45	3741	-0.197	0.301	0.083	0.135	287.988514	1.293497	1918.88	-1451.28
6	GUIDE	60702128	9.24	3737	-0.115	-0.047	0.070	0.116	287.383379	1.029262	1995.40	923.30
7	GUIDE	672281216	9.32	3741	0.279	-0.230	0.099	0.162	287.454836	-0.067927	-1681.81	2387.98

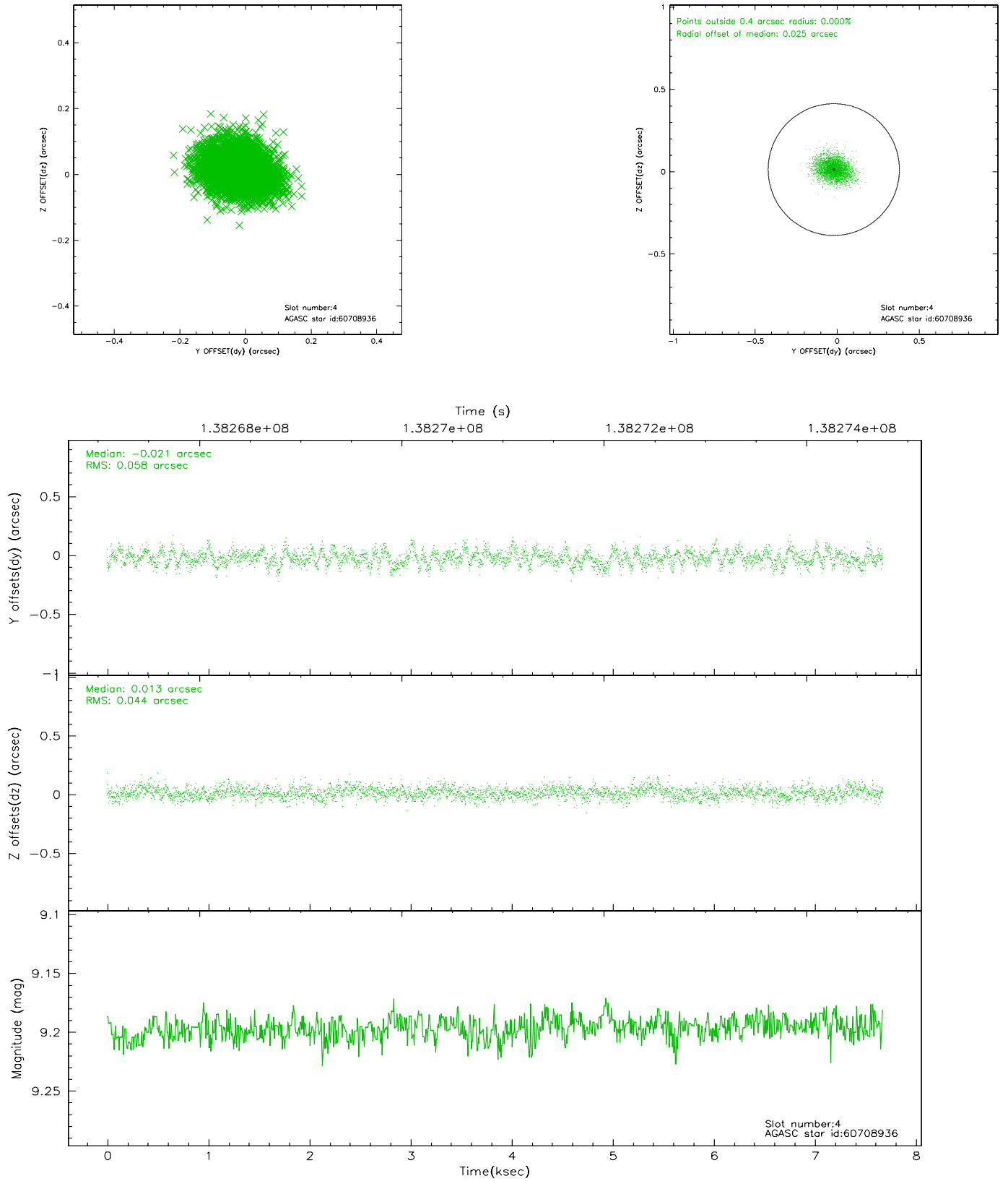


## 2.4 Star Slots

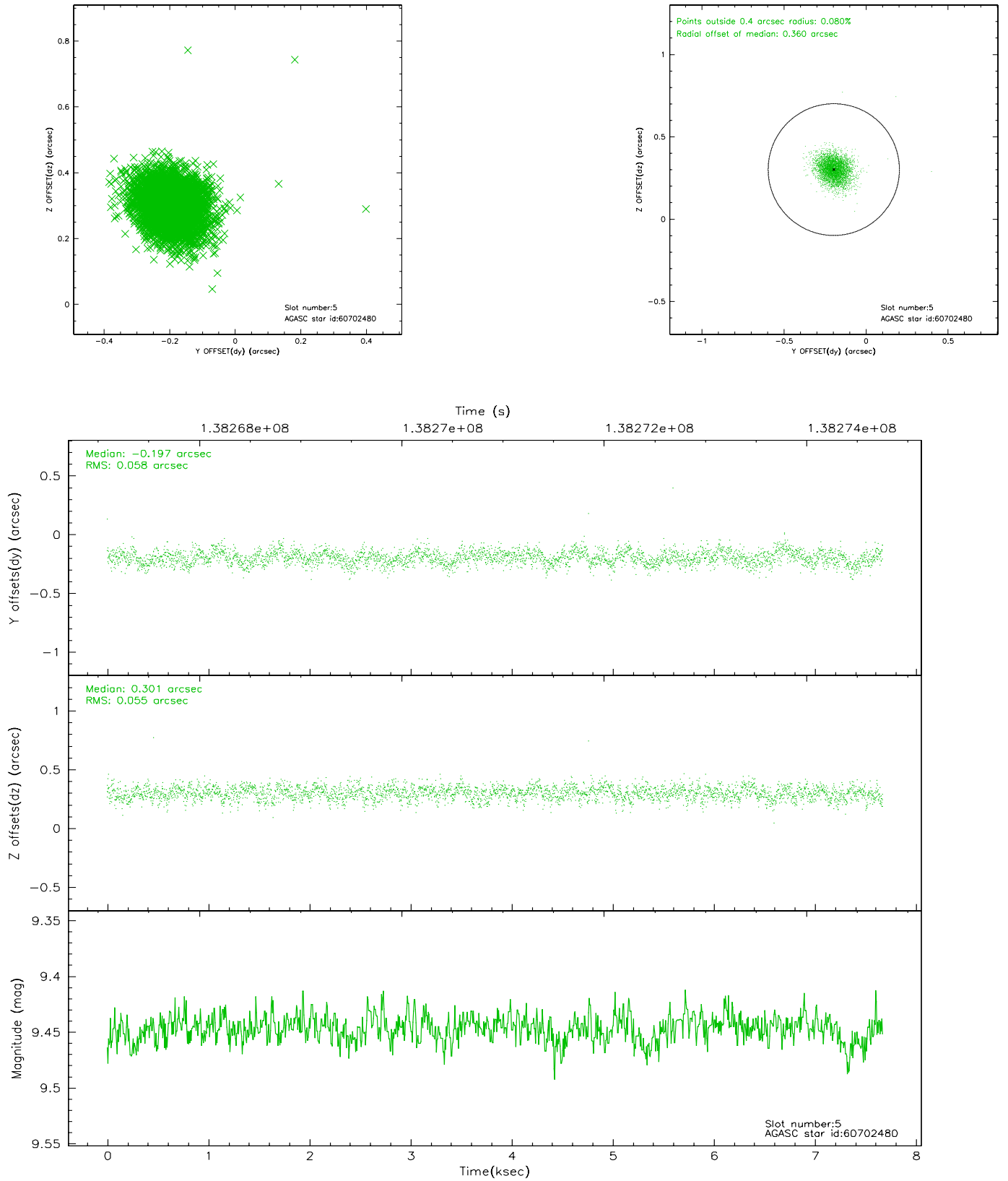
### 2.4.1 Slot 3



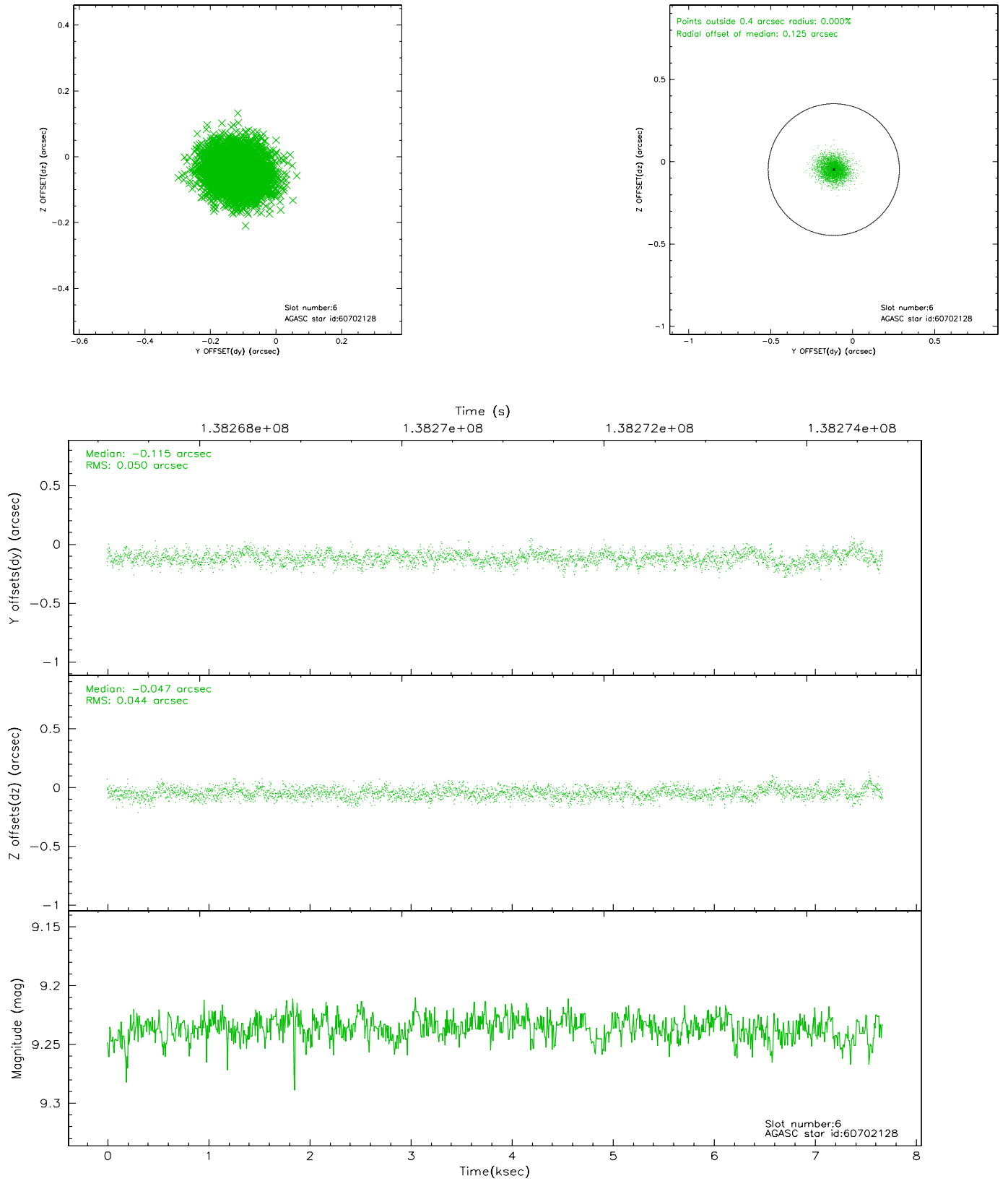
## 2.4.2 Slot 4



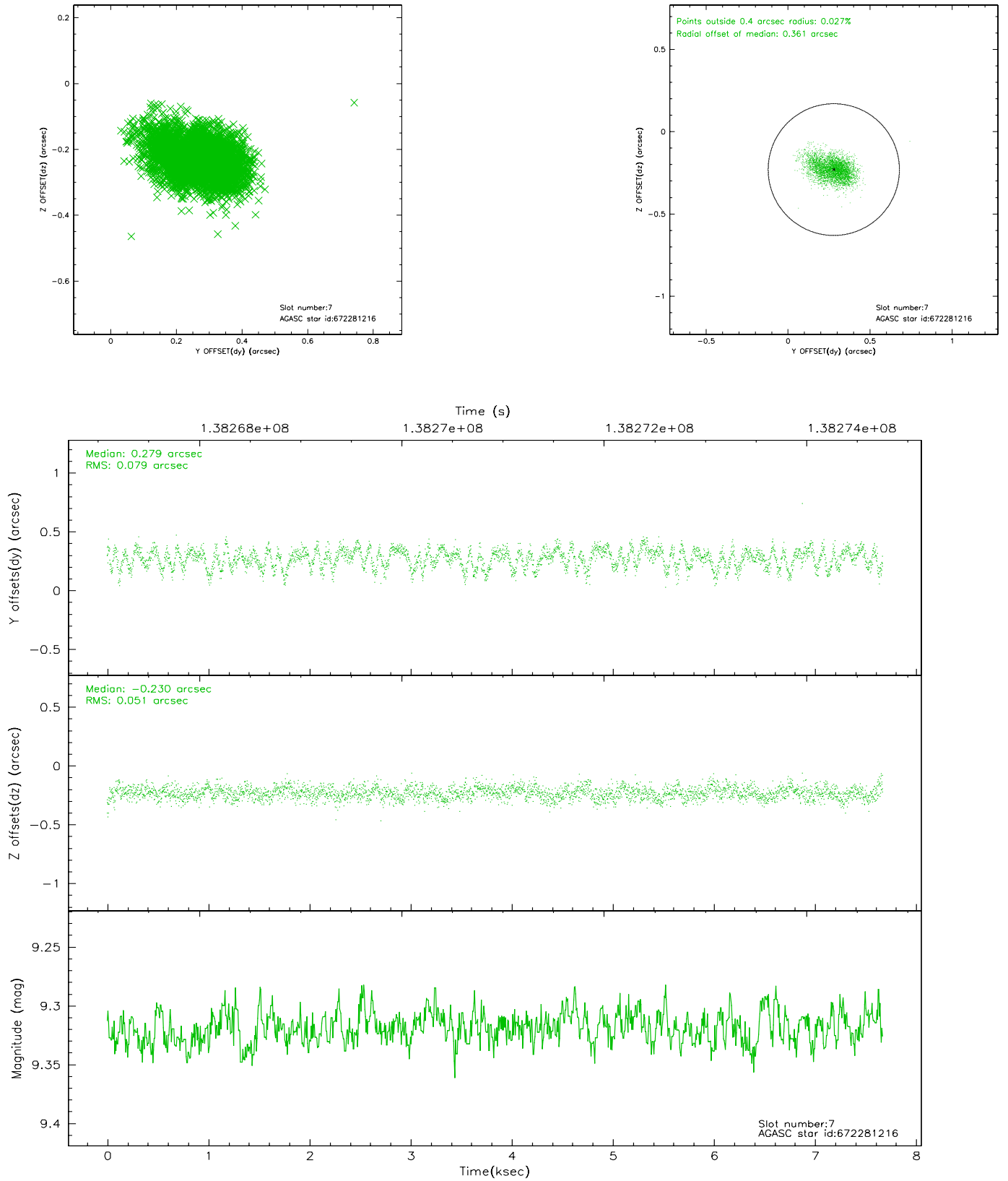
### 2.4.3 Slot 5



## 2.4.4 Slot 6

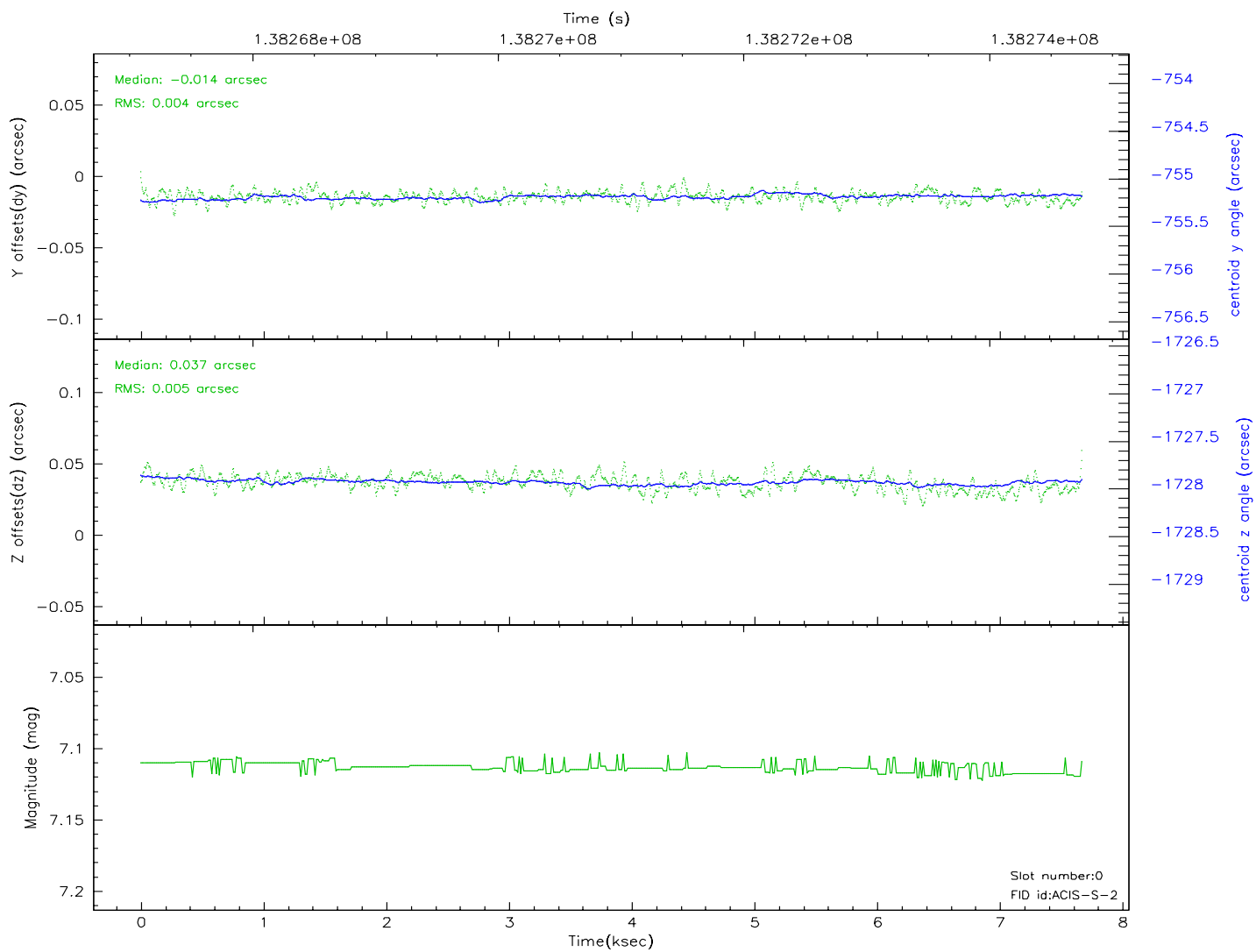
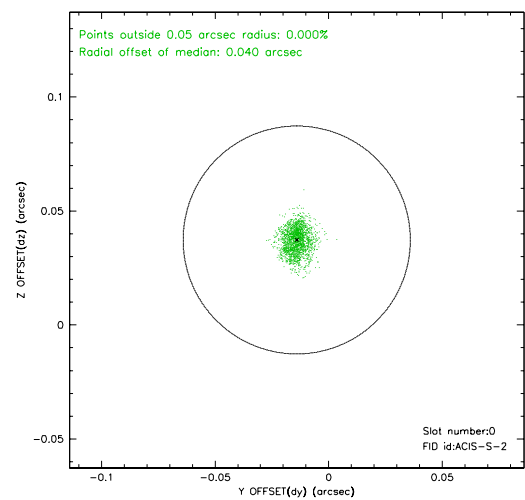
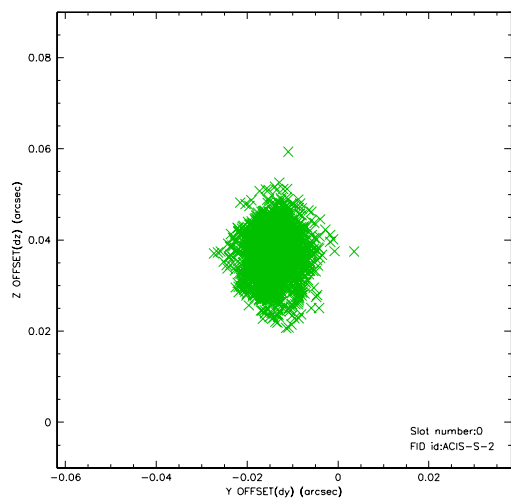


## 2.4.5 Slot 7

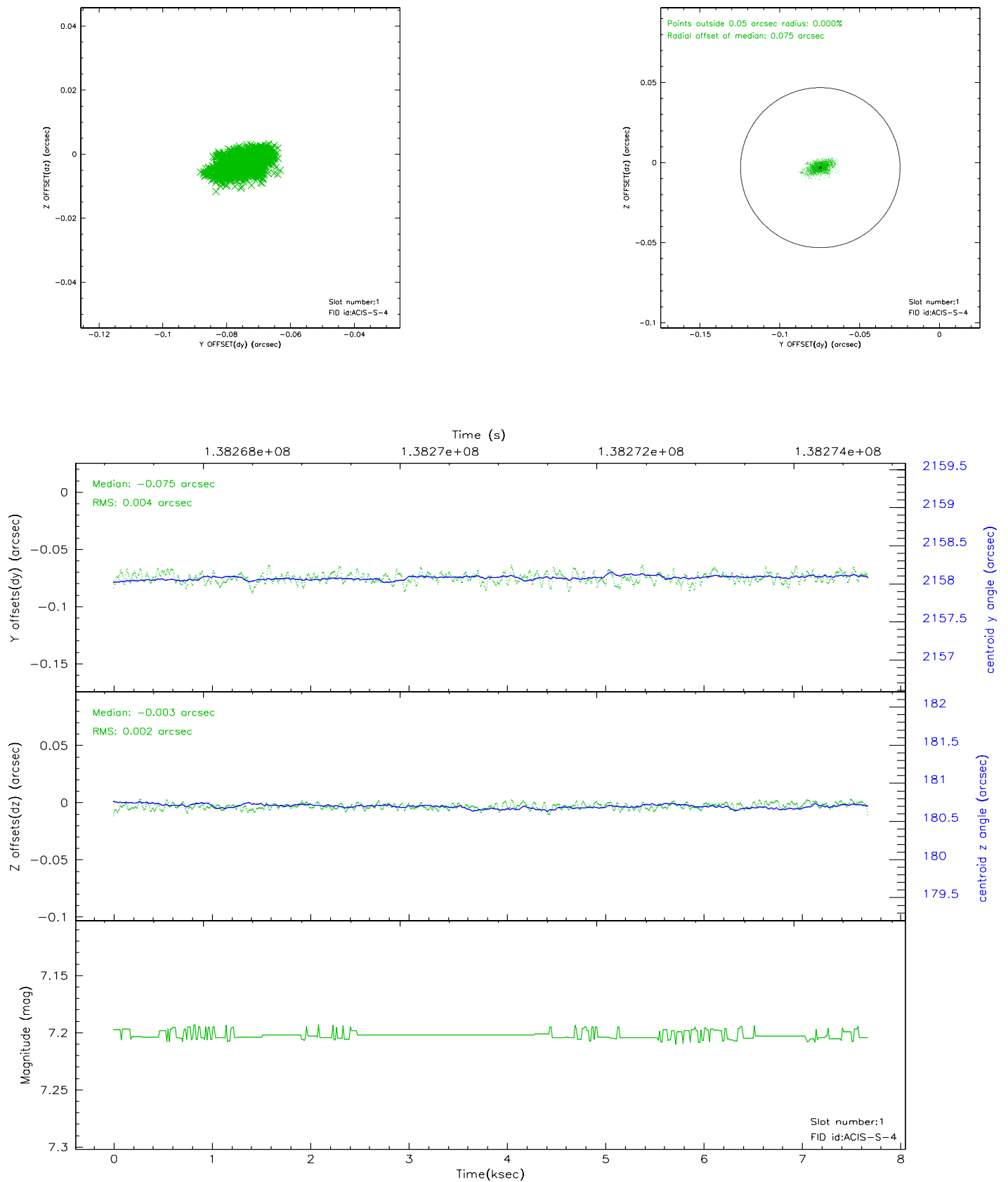


## 2.5 FID Slots

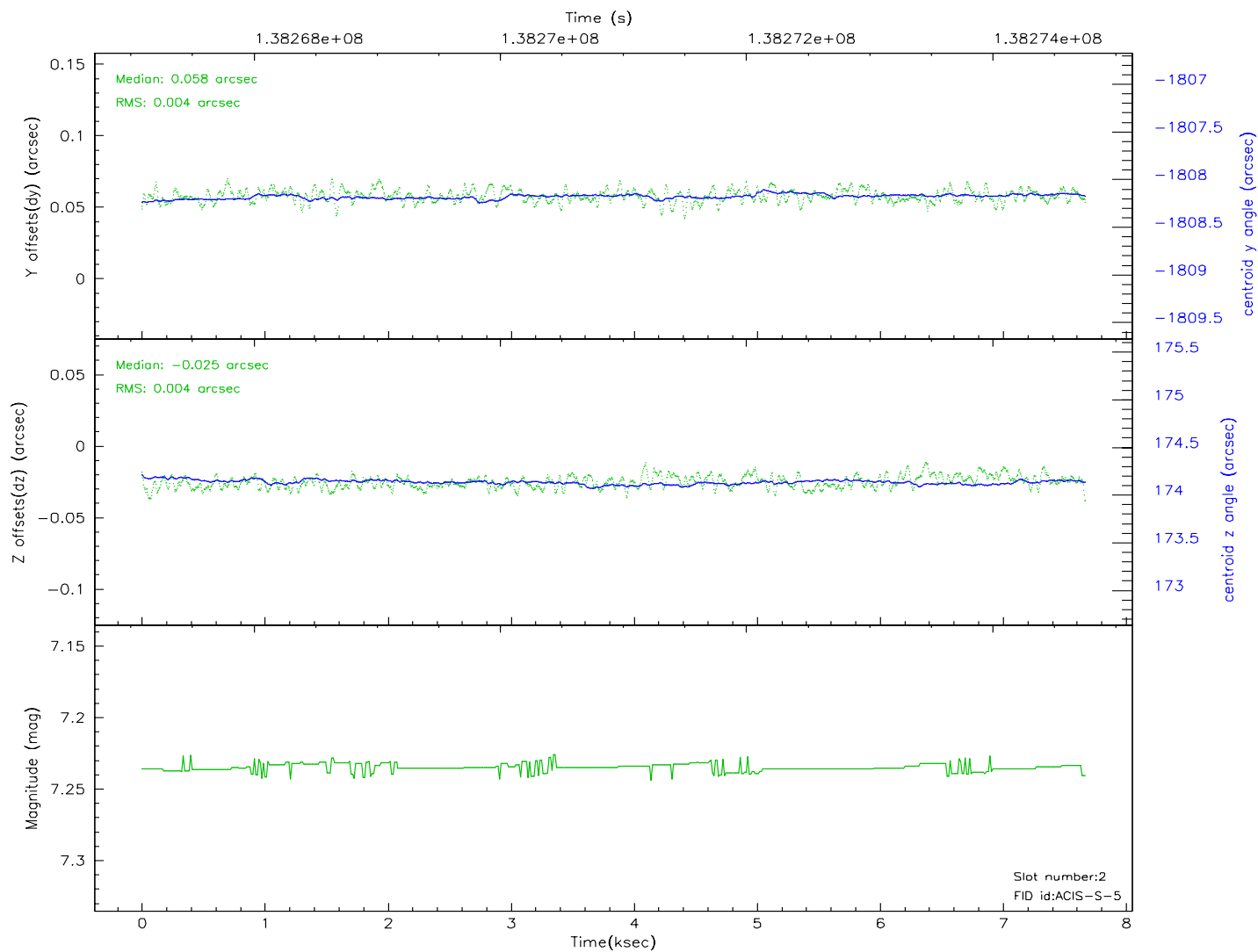
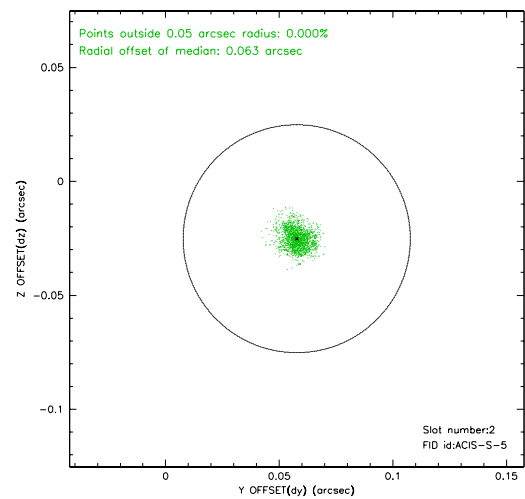
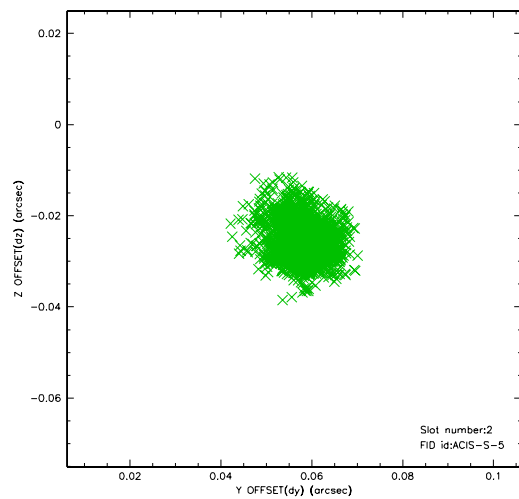
### 2.5.1 Slot 0



## 2.5.2 Slot 1



### 2.5.3 Slot 2





### 3 Point Sources

## A Summary

### A.1 Status

V&V Scientist	Jen Lauer
V&V Date (YYYY-MM-DD)	2006.09.18
V&V Edition	1
V&V Disposition and Status	OK
V&V Charge Time	7.672

### A.2 Comments

Monitor constraint met.