

V&V Reference Report

L2 ASCDS Version : 7.6.10

Observation 3405 - L2 Version 001
Chandra X-Ray Center

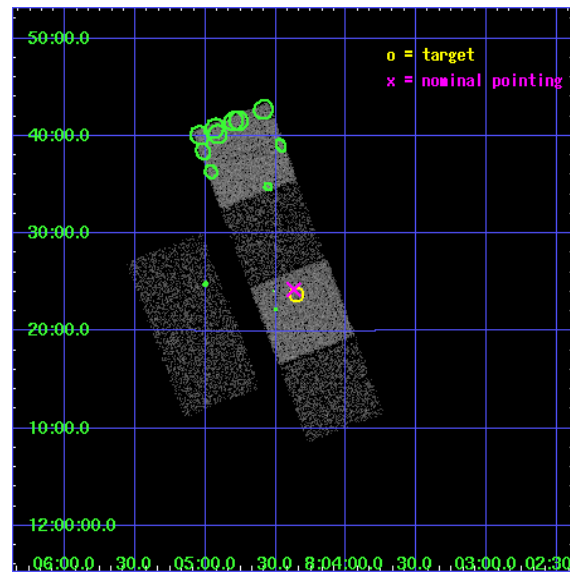
L2 Processing Date : Jan 19 2007

Contents

1	Front	2
2	OBI	3
2.1	OBI	3
2.1.1	Images	3
2.1.2	Bias	3
2.1.3	Parameters	4
2.1.4	Events	4
2.2	Compared Parameters	5
2.3	Aspect	6
2.4	Star Slots	9
2.4.1	Slot 3	9
2.4.2	Slot 4	10
2.4.3	Slot 5	11
2.4.4	Slot 6	12
2.4.5	Slot 7	13
2.5	FID Slots	14
2.5.1	Slot 0	14
2.5.2	Slot 1	15
2.5.3	Slot 2	16
3	Point Sources	17
A	Summary	18
A.1	Status	18
A.2	Comments	18

1 Front

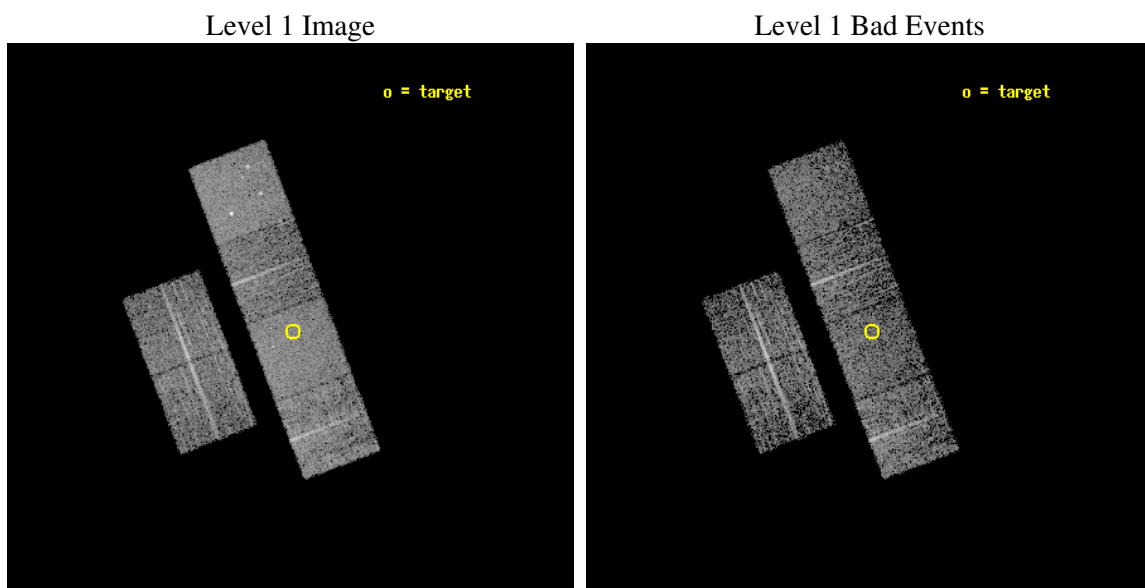
seq_num	100016
obs_id	3405
title	ASTEROID OBSERVATION
observer	Professor Gordon Garmire
object	1998 WT24
dtcycle	0
cycle	P
ra_targ	121.08765
dec_targ	12.39583
ra_nom	121.09280026424
dec_nom	12.404373168715
roll_nom	69.252762329343
revision	2
ontime	3500.8000032604
livetime	3456.4707656904
ontime2	3500.8000032604
ontime3	3500.8000032604
ontime5	3500.8000032604
ontime6	3500.8000032604
ontime7	3500.8000032604
ontime8	3500.8000032604
l2events	35512



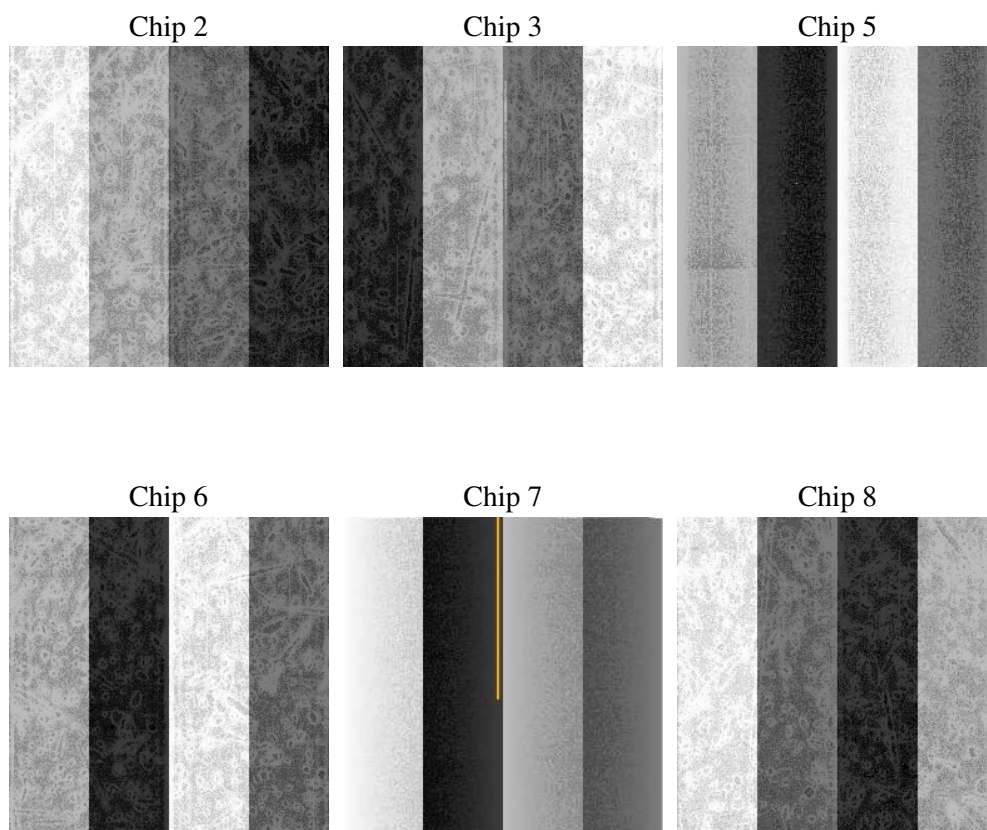
2 OBI

2.1 OBI

2.1.1 Images



2.1.2 Bias



2.1.3 Parameters

obi_num	0
ascdsver	7.6.10
caldbver	3.3.0
date	2007-01-19T23:35:32
revision	2

sched_exp_time	3300.000000
ontime	3500.8000032604
ontime2	3500.8000032604
ontime3	3500.8000032604
ontime5	3500.8000032604
ontime6	3500.8000032604
ontime7	3500.8000032604
ontime8	3500.8000032604
llevents	175994

2.1.4 Events

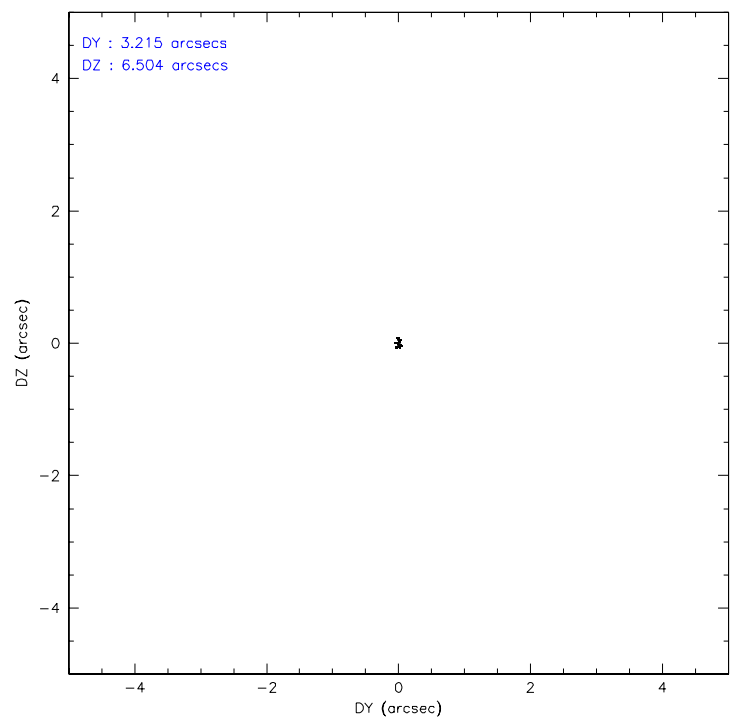
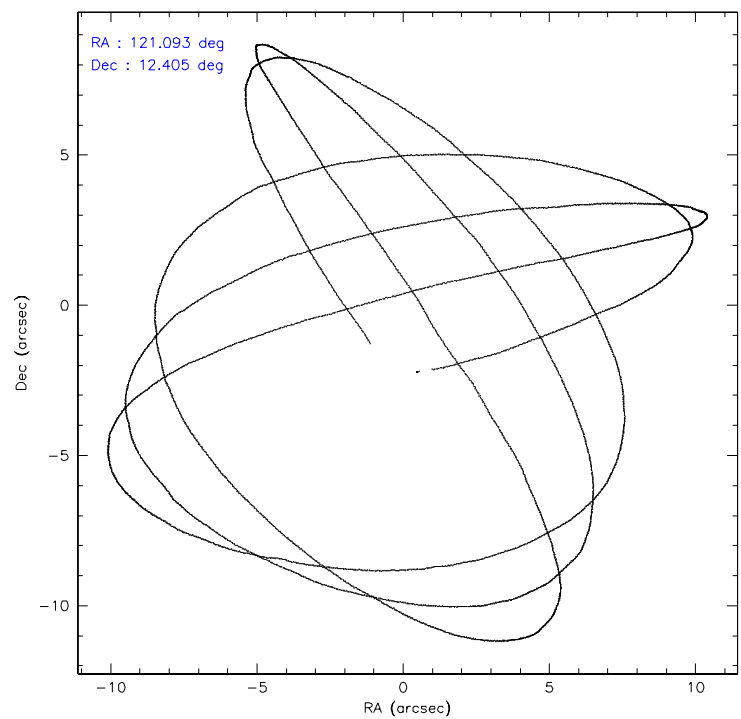
	ccd 2	ccd 3	ccd 5	ccd 6	ccd 7	ccd 8
level 1 events	26000	24699	36005	24478	32741	32071
rejected events	23314	22156	20660	21804	20198	25577
rejected %	89%	89%	57%	89%	61%	79%

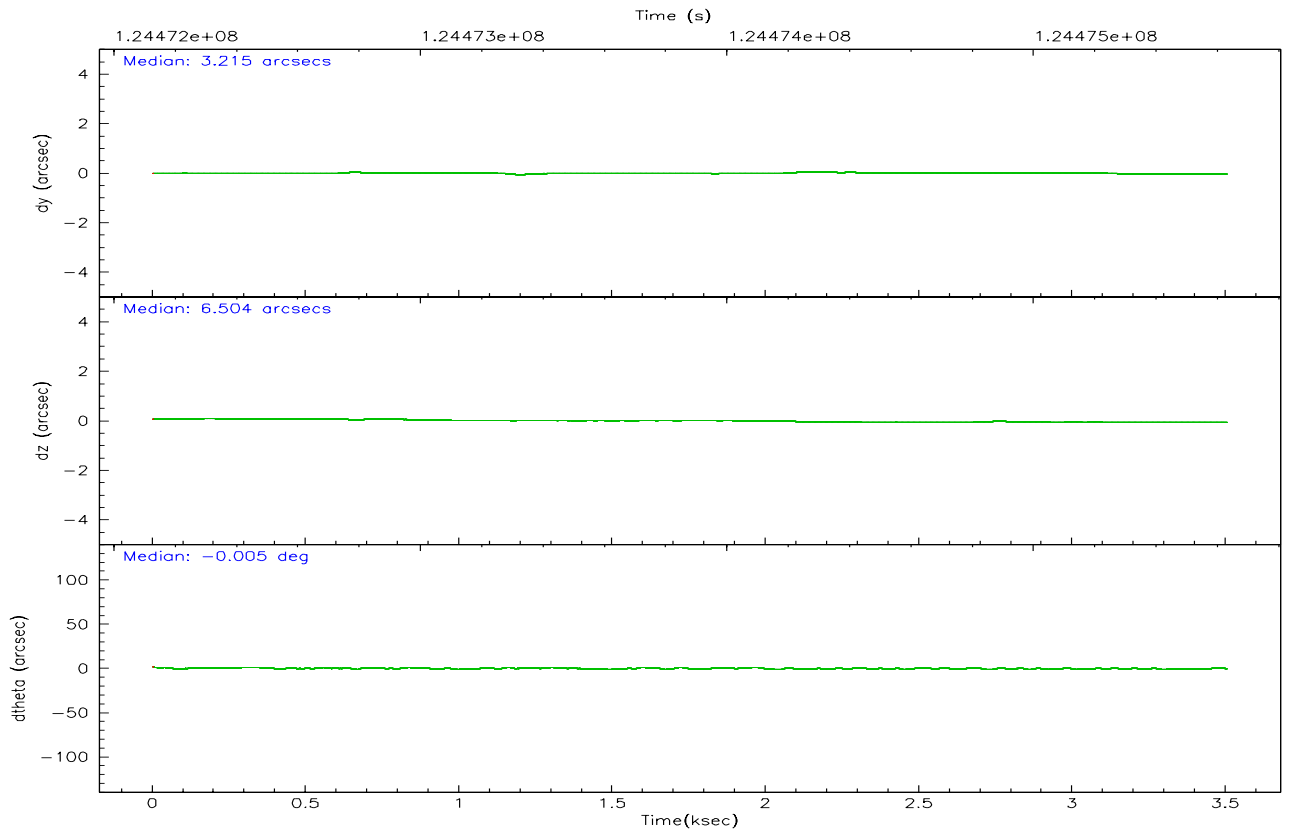
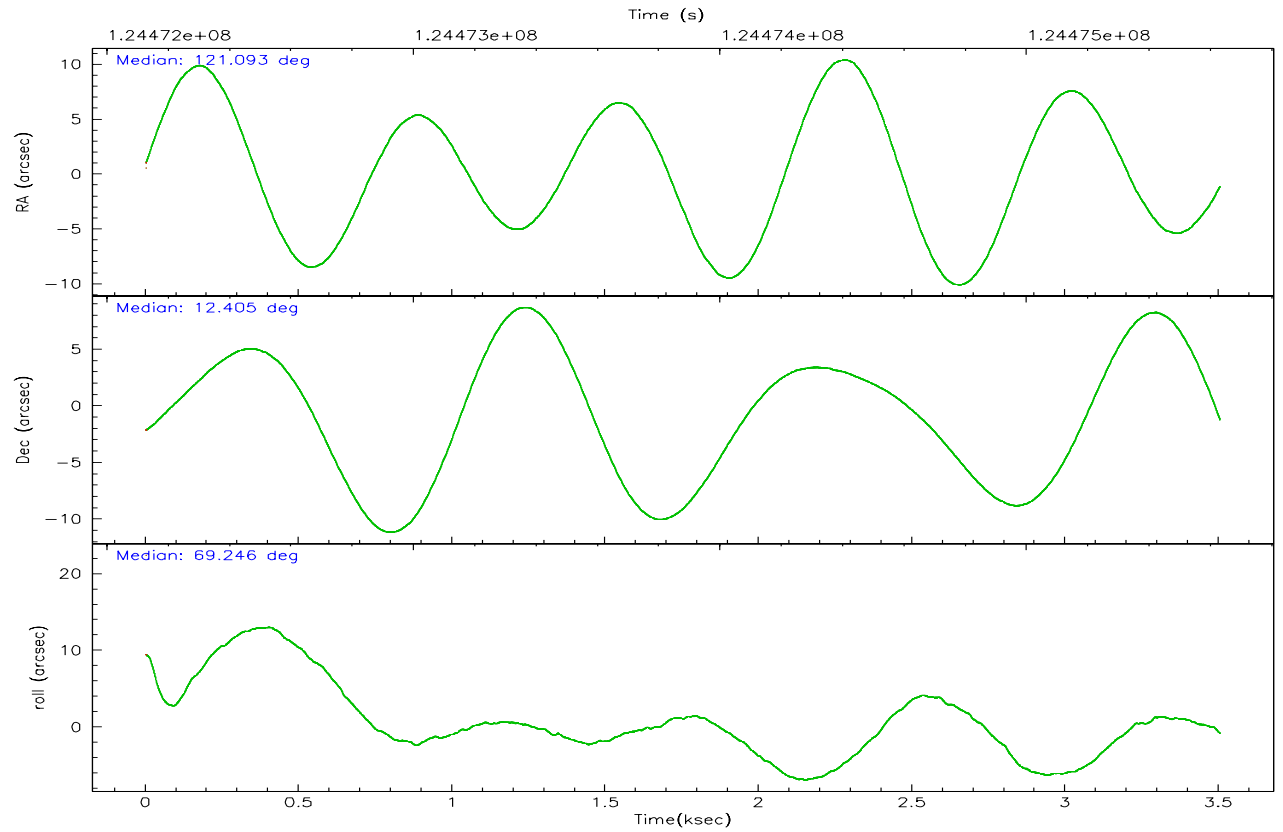
	ccd 2	ccd 3	ccd 5	ccd 6	ccd 7	ccd 8
grade 0 events	1104	1207	2236	1145	1335	2247
	4%	4%	6%	4%	4%	7%
grade 1 events	10	17	49	10	24	32
	0%	0%	0%	0%	0%	0%
grade 2 events	658	539	4983	612	2740	1532
	2%	2%	13%	2%	8%	4%
grade 3 events	297	263	625	289	1209	843
	1%	1%	1%	1%	3%	2%
grade 4 events	297	285	593	292	1153	760
	1%	1%	1%	1%	3%	2%
grade 5 events	952	1015	2618	1073	3200	1433
	3%	4%	7%	4%	9%	4%
grade 6 events	566	485	8300	585	7201	1787
	2%	1%	23%	2%	21%	5%
grade 7 events	22116	20888	16601	20472	15879	23437
	85%	84%	46%	83%	48%	73%

2.2 Compared Parameters

Parameter	Planned	Actual	Parameter	Planned	Actual
Instrument	ACIS	ACIS	Obspar format version number	6	6
Detector	ACIS-235678	ACIS-235678	Obspar file type	PREDICTED	ACTUAL
Grating	NONE	NONE	Obspar update status	NONE	UPDATED
Data mode	FAINT	FAINT	Number of optional ACIS chips dropped	0	0
Observation mode	POINTING	POINTING	On-chip summing requested	N	N
Pointing RA	121.097579	121.0928002642425	Subarray requested	NONE	NONE
Pointing Dec	12.377321	12.40437316871534	Alternating exposures requested	N	N
Pointing Roll	69.095104	69.25276232934283	Primary exposure time	0.000000	3.2
SIM focus pos (mm)	-0.684267	-0.6828225247311905			
SIM defocus (mm)	0	0.001444936568705701			
SIM translation stage pos (mm)	-190.132523	-190.1425803651734			
SIM translation stage offset (mm)	0	0.01005778216563158			
Observation start time	124472335.184000	124471958.76634			
Observation start date	2001-12-11T15:37:51	2001-12-11T15:32:38			
Observation end time	124475635.184000	124475768.6915			
Observation end date	2001-12-11T16:32:51	2001-12-11T16:36:08			
Read mode	TIMED	TIMED			

2.3 Aspect



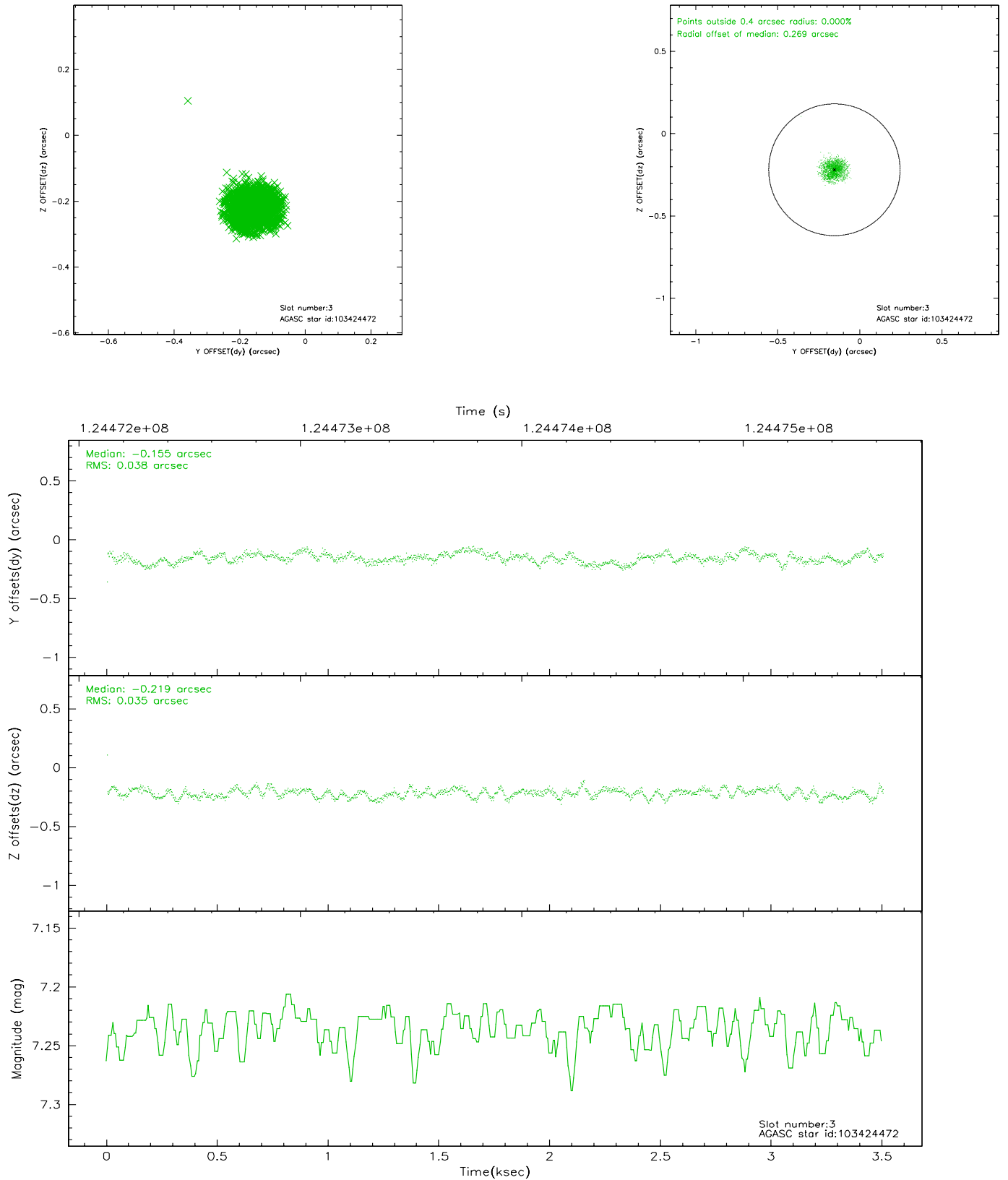


Slot Statistics

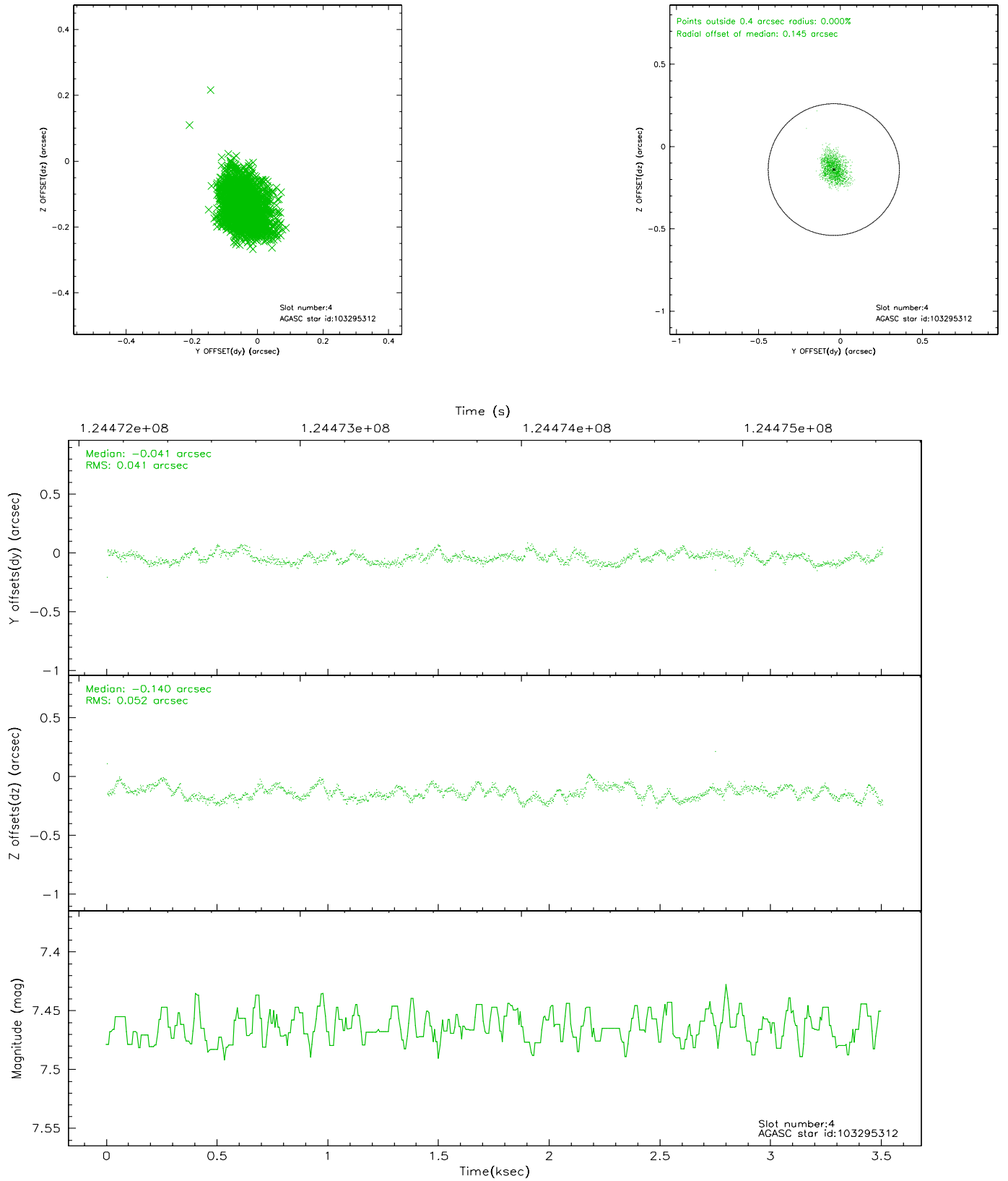
slot	status	id	mag	n_pts	med_dy	med_dz	dr1	dr2	ra	dec	mean_y	mean_z
0	FID	ACIS-S-2	7.12	853	-0.016	0.031	0.007	0.012	0.000000	0.000000	-755.85	-1727.58
1	FID	ACIS-S-4	7.20	851	-0.057	-0.001	0.005	0.009	0.000000	0.000000	2156.54	179.04
2	FID	ACIS-S-5	7.23	853	0.041	-0.022	0.007	0.011	0.000000	0.000000	-1806.34	174.70
3	GUIDE	103424472	7.24	1707	-0.155	-0.219	0.057	0.085	120.737980	12.944300	1455.73	1907.27
4	GUIDE	103295312	7.46	1708	-0.041	-0.140	0.071	0.111	120.636493	12.452234	-325.80	1611.90
5	GUIDE	103428984	7.59	1708	0.089	0.027	0.048	0.077	121.225289	12.178709	-508.84	-673.94
6	GUIDE	103424768	9.00	1709	0.033	0.239	0.073	0.119	121.477286	11.533975	-2358.85	-2334.67
7	GUIDE	103426776	9.46	1708	0.083	0.093	0.100	0.166	121.917316	12.619226	1842.78	-2378.83

2.4 Star Slots

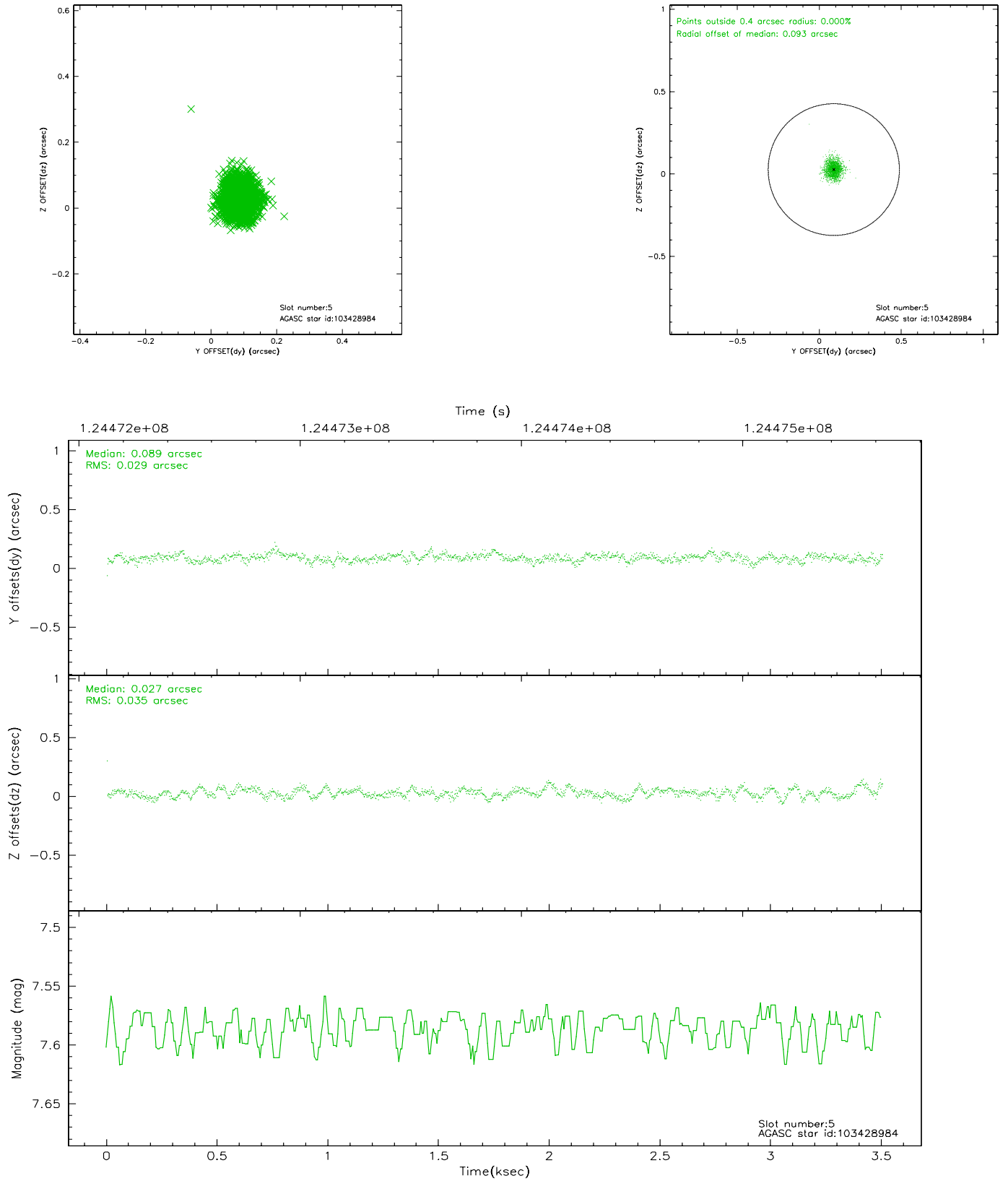
2.4.1 Slot 3



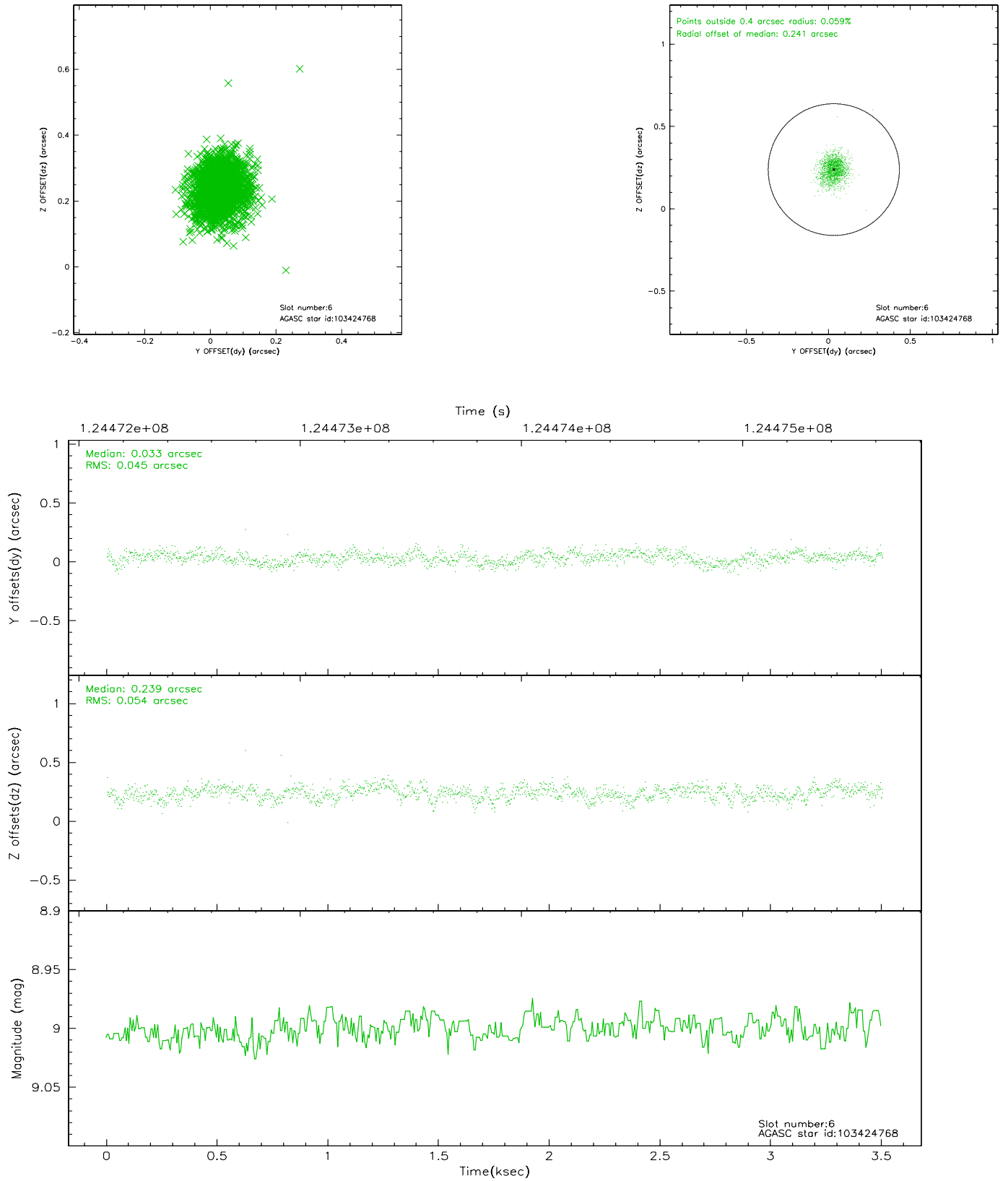
2.4.2 Slot 4



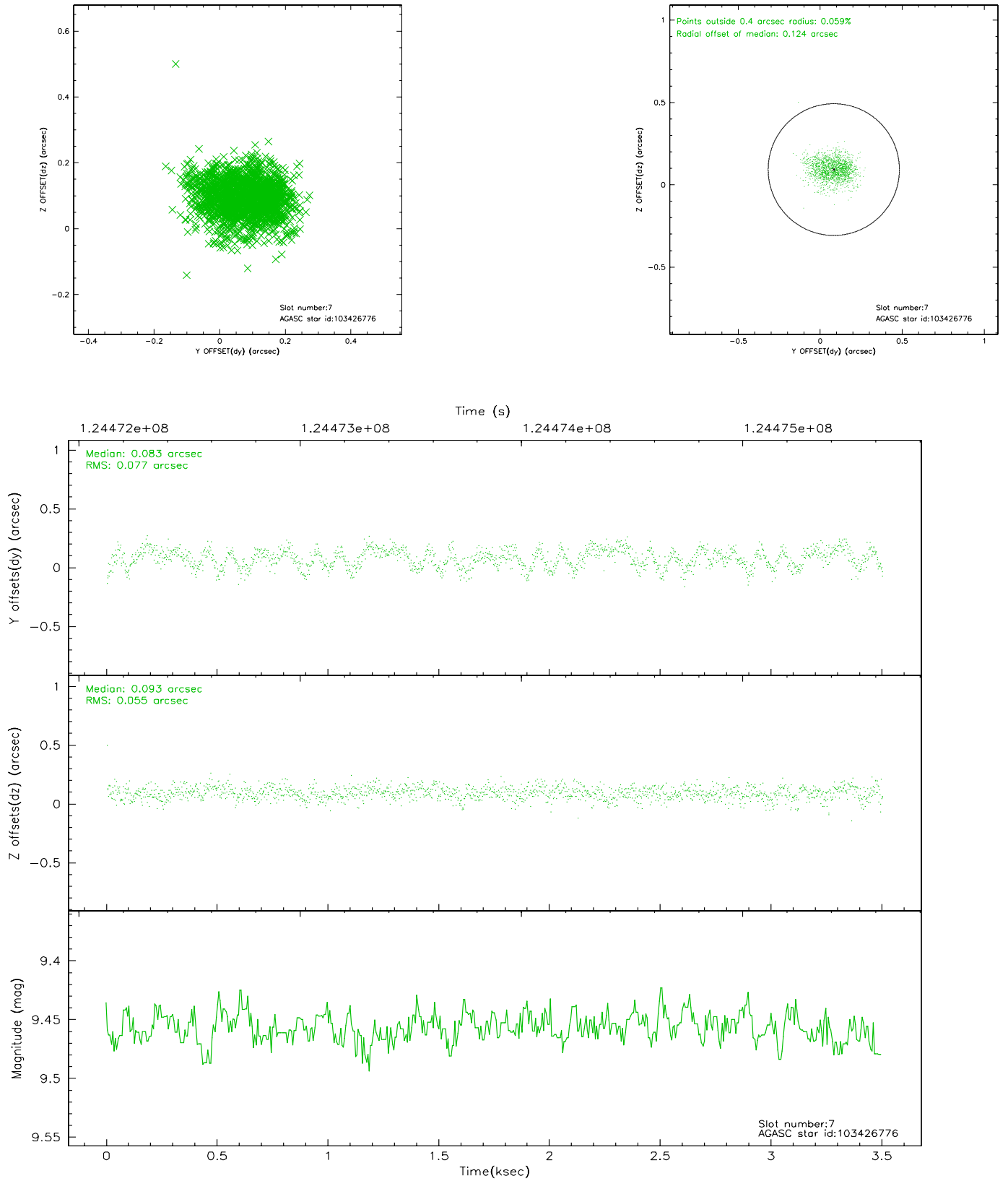
2.4.3 Slot 5



2.4.4 Slot 6

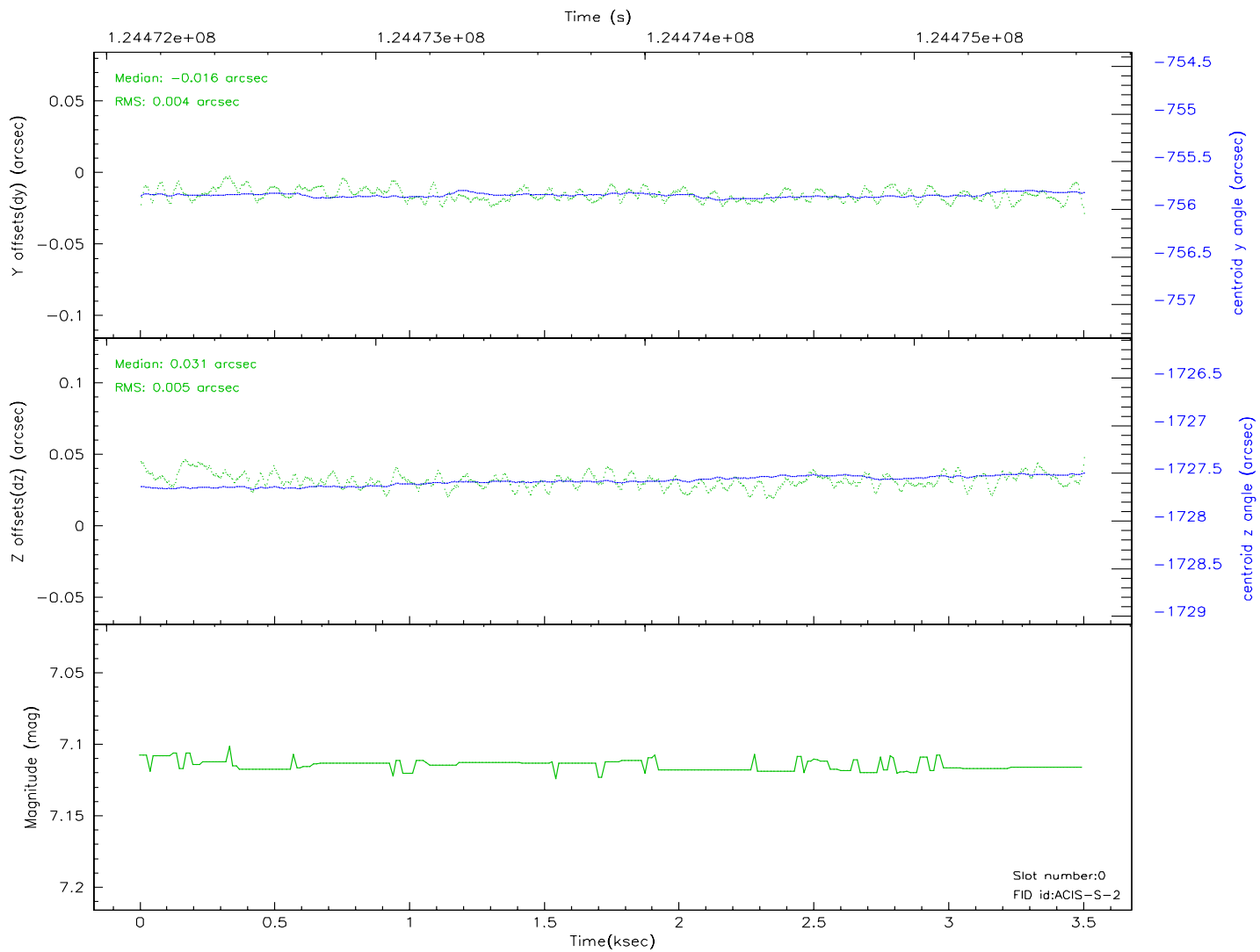
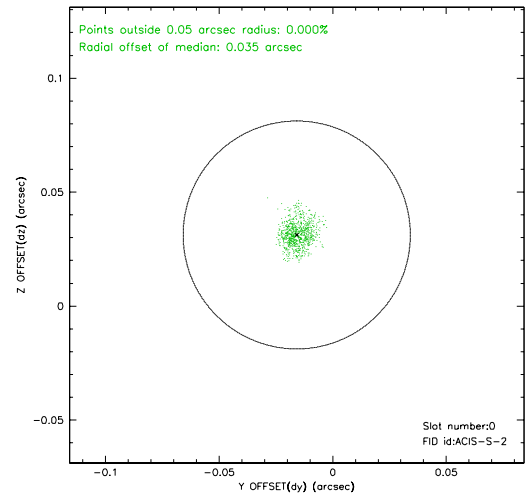
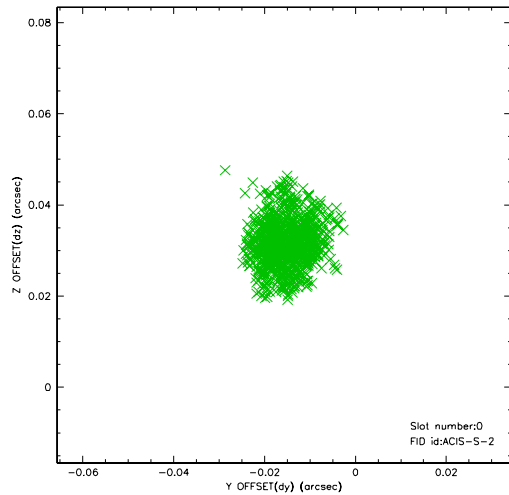


2.4.5 Slot 7

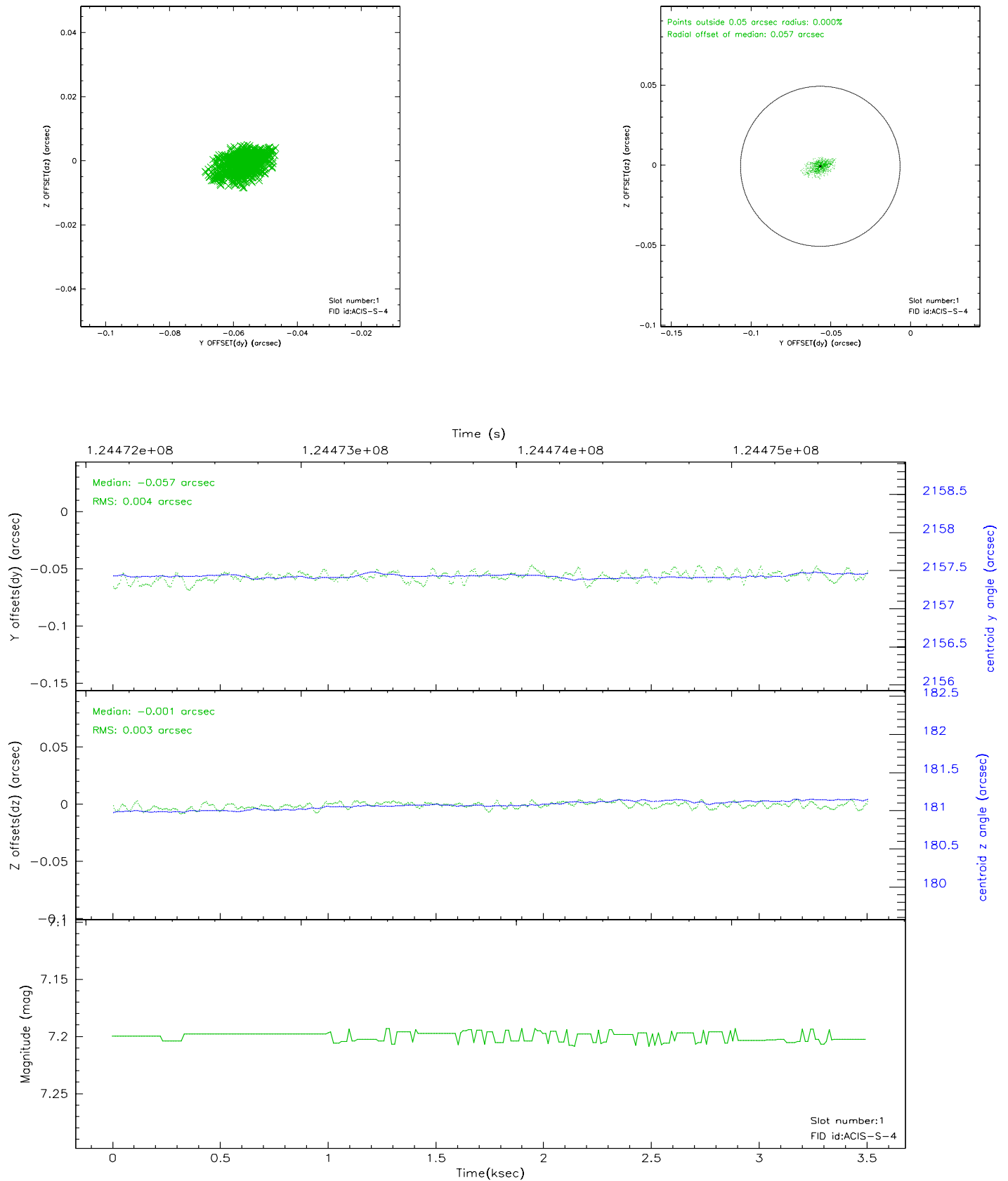


2.5 FID Slots

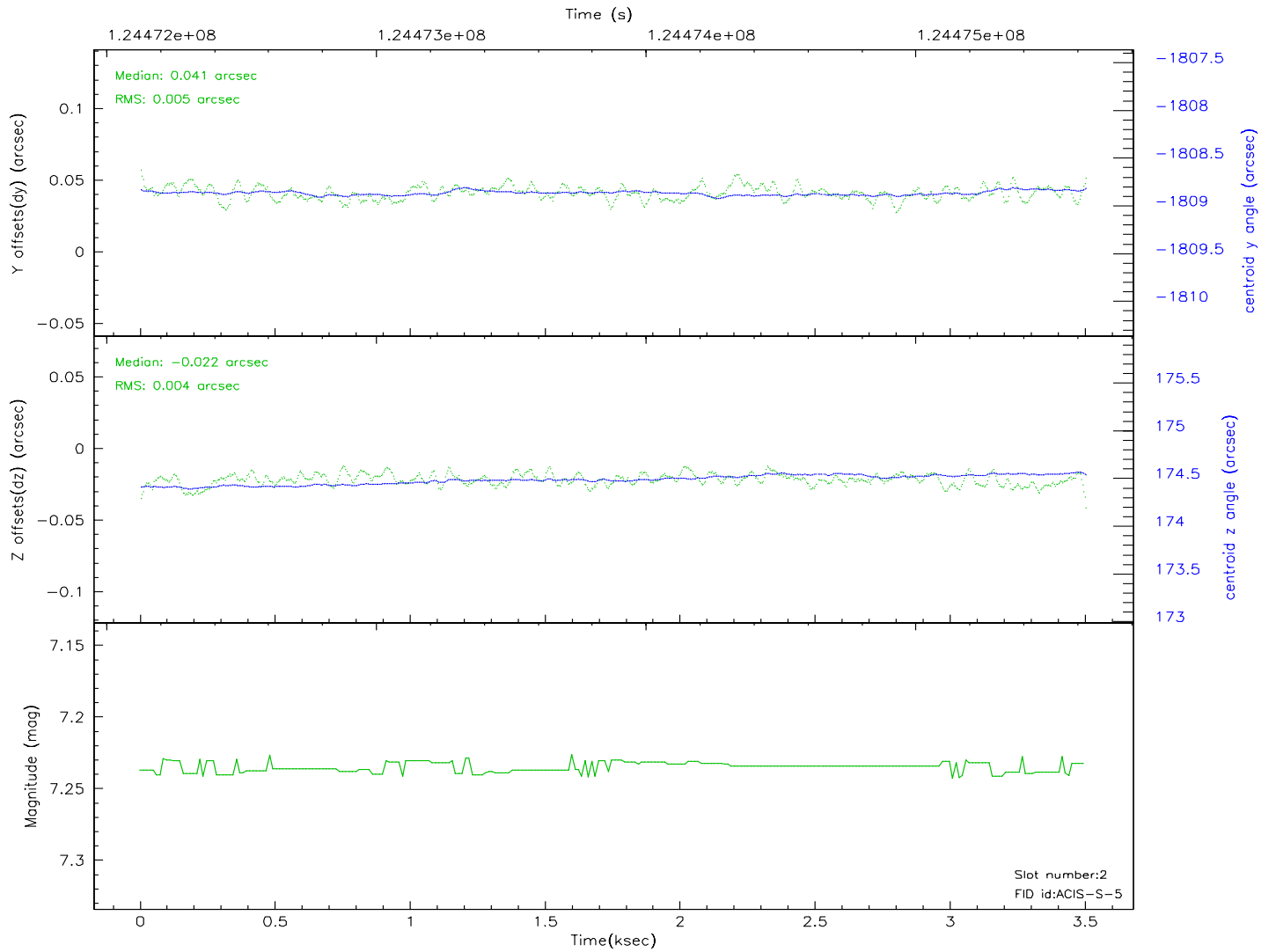
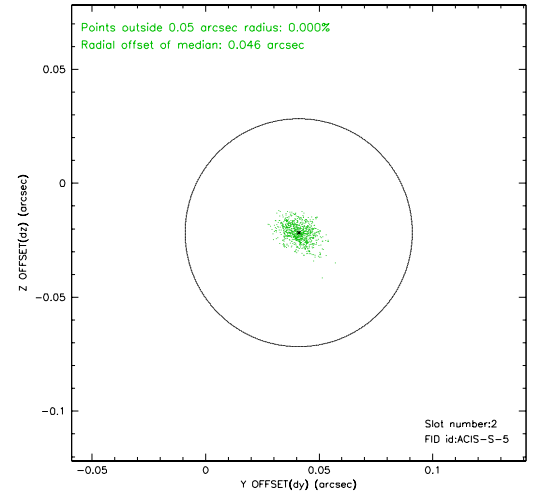
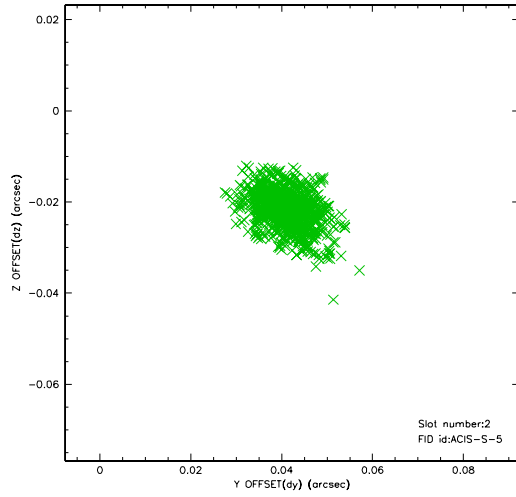
2.5.1 Slot 0



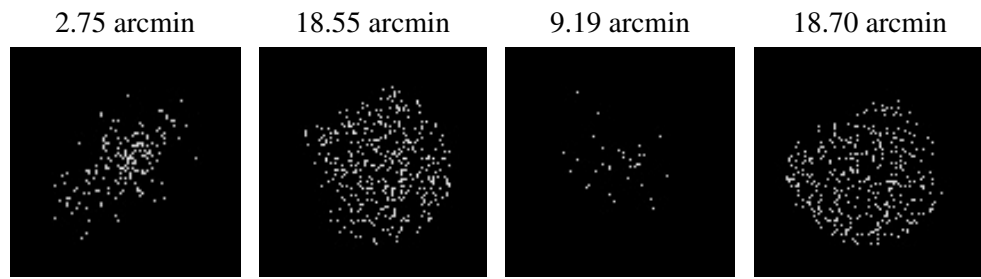
2.5.2 Slot 1



2.5.3 Slot 2



3 Point Sources



A Summary

A.1 Status

V&V Scientist	Beth Sundheim
V&V Date (YYYY-MM-DD)	2007.01.21
V&V Edition	1
V&V Disposition and Status	OK
V&V Charge Time	3.5

A.2 Comments