

# V&V Reference Report

## L2 ASCDS Version : 7.6.10

Observation 3395 - L2 Version 001  
Chandra X-Ray Center

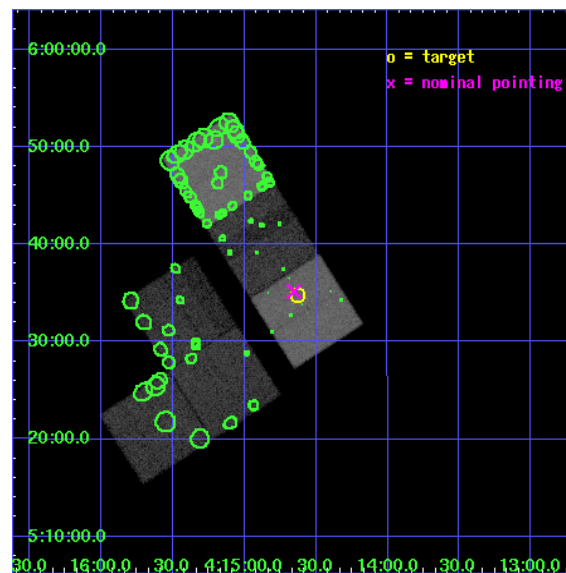
L2 Processing Date : Jan 13 2007

## Contents

<b>1</b>	<b>Front</b>	<b>2</b>
<b>2</b>	<b>OBI</b>	<b>3</b>
2.1	OBI . . . . .	3
2.1.1	Images . . . . .	3
2.1.2	Bias . . . . .	3
2.1.3	Parameters . . . . .	4
2.1.4	Events . . . . .	4
2.2	Compared Parameters . . . . .	5
2.3	Aspect . . . . .	6
2.4	Star Slots . . . . .	9
2.4.1	Slot 3 . . . . .	9
2.4.2	Slot 4 . . . . .	10
2.4.3	Slot 5 . . . . .	11
2.4.4	Slot 6 . . . . .	12
2.4.5	Slot 7 . . . . .	13
2.5	FID Slots . . . . .	14
2.5.1	Slot 0 . . . . .	14
2.5.2	Slot 1 . . . . .	15
2.5.3	Slot 2 . . . . .	16
<b>3</b>	<b>Point Sources</b>	<b>17</b>
<b>A</b>	<b>Summary</b>	<b>18</b>
A.1	Status . . . . .	18
A.2	Comments . . . . .	18

# 1 Front

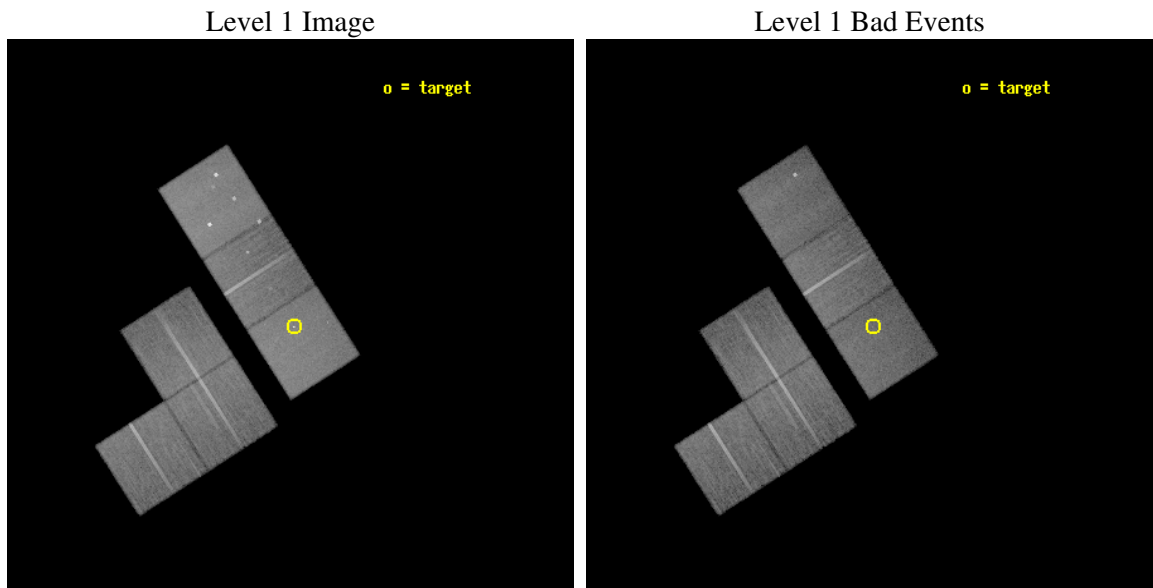
seq_num	700608
obs_id	3395
title	CHANDRA MONITORING OF A MICROLENSING EVENT IN MG J0414+0534
observer	Dr. GEORGE CHARTAS
object	MG J0414+0534
dtcycle	0
cycle	P
ra_targ	63.657083
dec_targ	5.578889
ra_nom	63.663715031258
dec_nom	5.5860139309277
roll_nom	57.357828371721
revision	2
ontime	28777.518066391
livetime	28413.119804894
ontime1	28777.518136129
ontime2	28777.518136129
ontime3	28777.518066391
ontime5	28780.759056553
ontime6	28777.518136129
ontime7	28777.518066391
l2events	322156



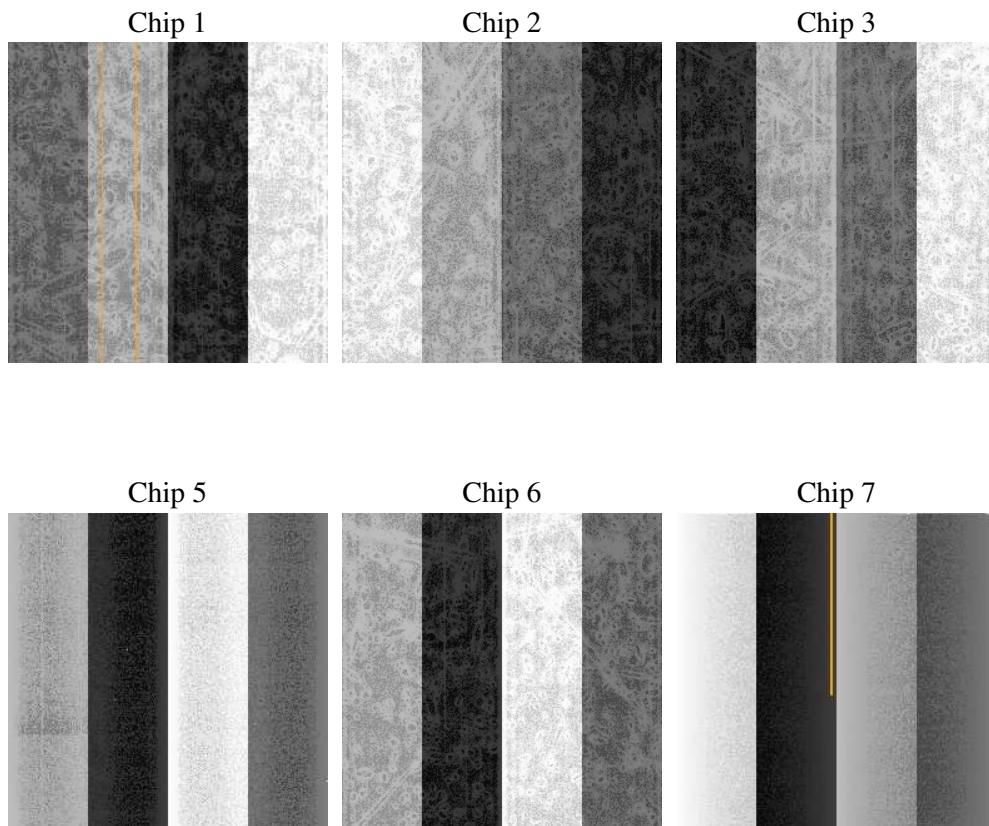
## 2 OBI

### 2.1 OBI

#### 2.1.1 Images



#### 2.1.2 Bias



### 2.1.3 Parameters

obi_num	4
ascdsver	7.6.10
caldsver	3.3.0
date	2007-01-13T17:28:30
revision	2

sched_exp_time	29000.000000
ontime	28777.518066391
ontime1	28777.518136129
ontime2	28777.518136129
ontime3	28777.518066391
ontime5	28780.759056553
ontime6	28777.518136129
ontime7	28777.518066391
l1events	1307434

### 2.1.4 Events

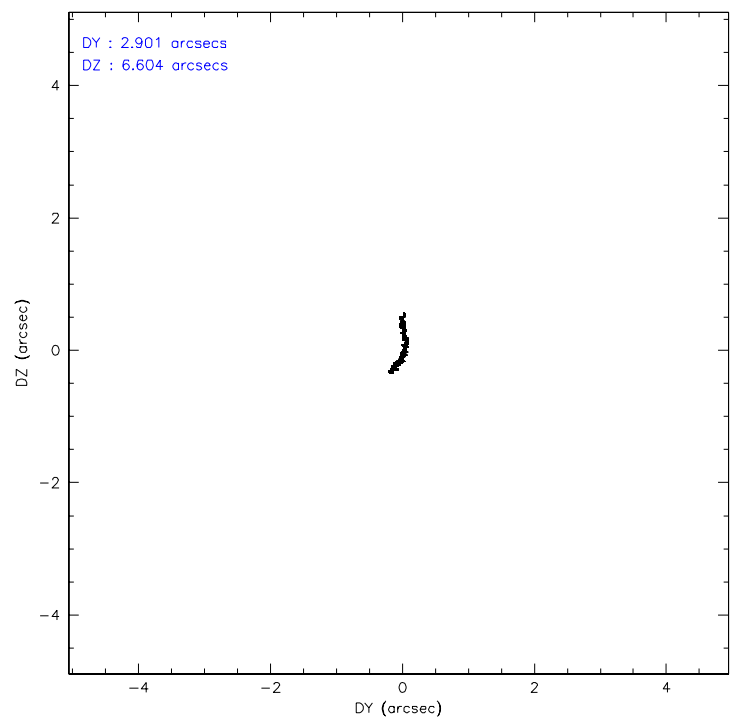
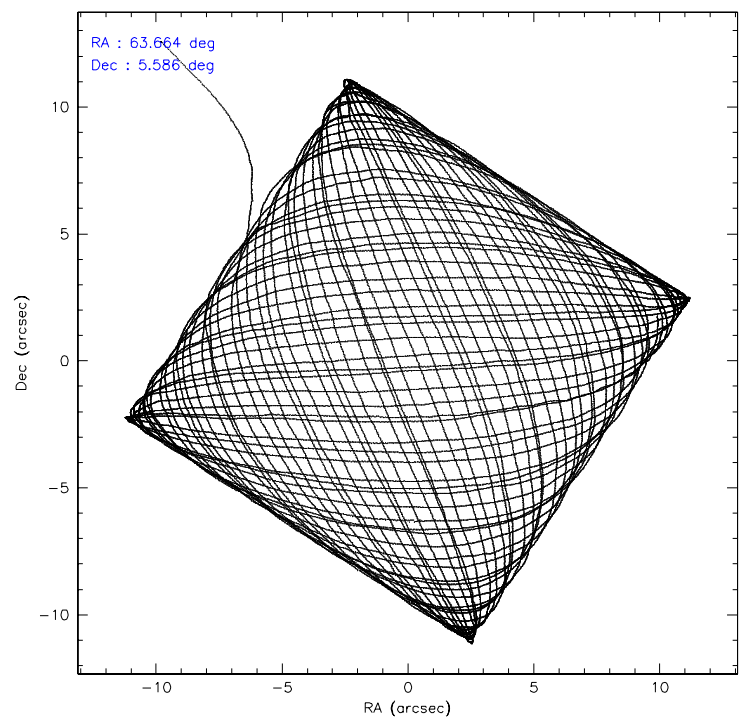
	ccd 1	ccd 2	ccd 3	ccd 5	ccd 6	ccd 7
level 1 events	191415	198685	195163	276781	202660	242730
rejected events	160824	169731	166830	145458	171869	136377
rejected %	84%	85%	85%	52%	84%	56%

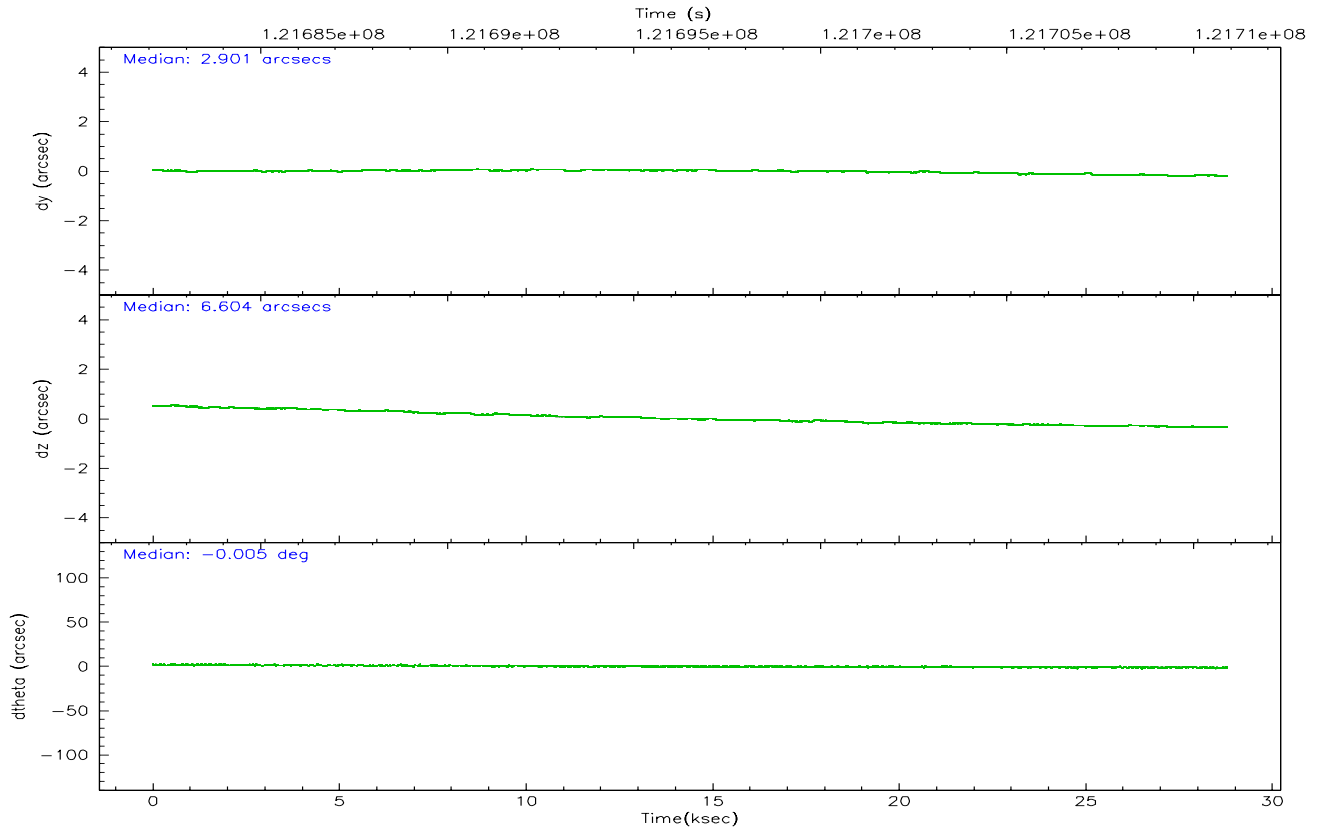
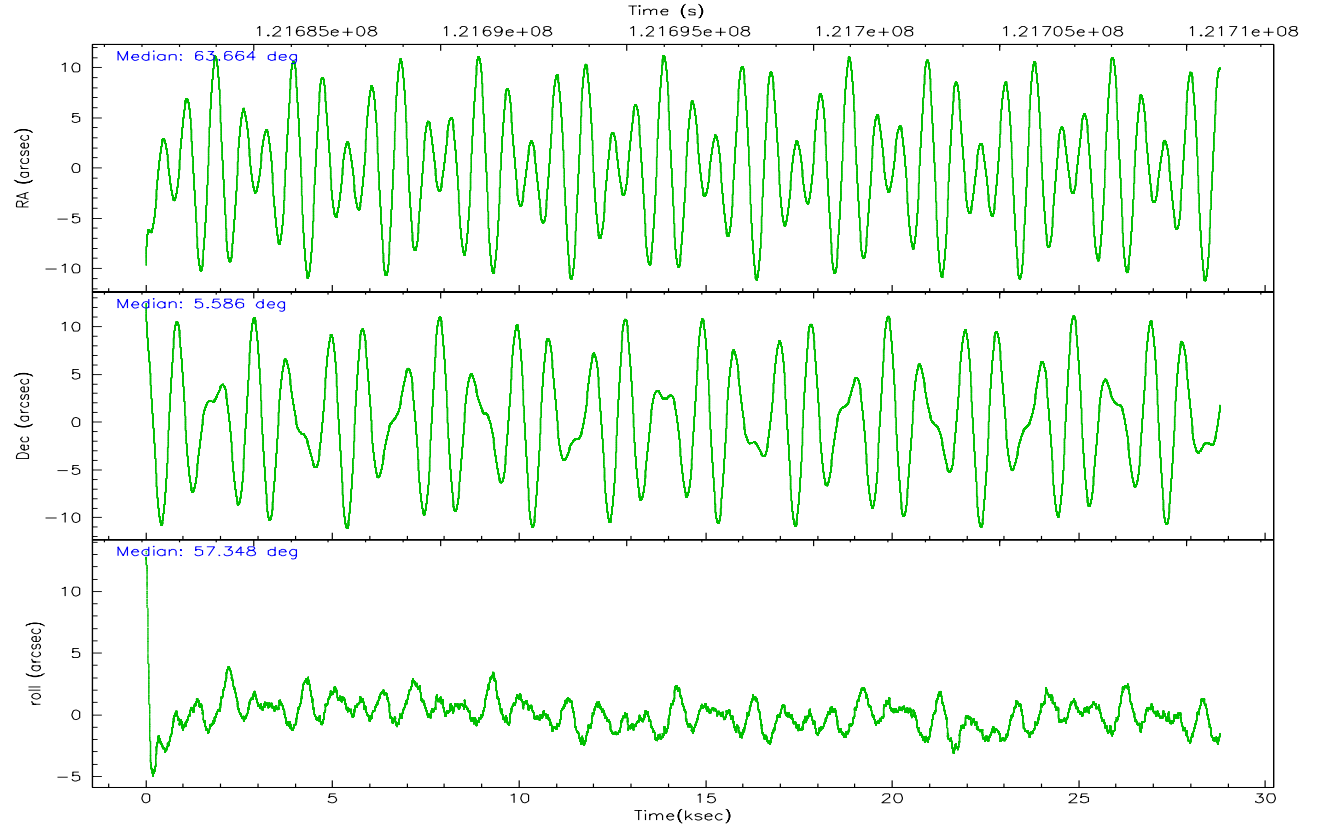
	ccd 1	ccd 2	ccd 3	ccd 5	ccd 6	ccd 7
grade 0 events	12165	12384	11890	18378	13241	10799
	6%	6%	6%	6%	6%	4%
grade 1 events	95	94	90	371	115	257
	0%	0%	0%	0%	0%	0%
grade 2 events	7707	7299	6980	37884	7553	21670
	4%	3%	3%	13%	3%	8%
grade 3 events	2392	2049	2165	7196	2287	9765
	1%	1%	1%	2%	1%	4%
grade 4 events	2351	2299	2100	5725	2224	9749
	1%	1%	1%	2%	1%	4%
grade 5 events	7239	6198	6893	20636	7874	22767
	3%	3%	3%	7%	3%	9%
grade 6 events	6173	5154	5376	63066	5720	55129
	3%	2%	2%	22%	2%	22%
grade 7 events	153293	163208	159669	123525	163646	112594
	80%	82%	81%	44%	80%	46%

## 2.2 Compared Parameters

Parameter	Planned	Actual	Parameter	Planned	Actual
Instrument	ACIS	ACIS	Obspar format version number	6	6
Detector	ACIS-123567	ACIS-123567	Obspar file type	PREDICTED	ACTUAL
Grating	NONE	NONE	Obspar update status	NONE	UPDATED
Data mode	FAINT	FAINT	Number of optional ACIS chips dropped	0	0
Observation mode	POINTING	POINTING	On-chip summing requested	N	N
Pointing RA	63.662784	63.66371503125823	Subarray requested	NONE	NONE
Pointing Dec	5.558775	5.586013930927672	Alternating exposures requested	N	N
Pointing Roll	57.201291	57.35782837172063	Primary exposure time	0.000000	3.2
SIM focus pos (mm)	-0.684267	-0.6828225247311905			
SIM defocus (mm)	0	0.001444936568705701			
SIM translation stage pos (mm)	-190.132523	-190.1400660498719			
SIM translation stage offset (mm)	0	0.00754346686406393			
Observation start time	121682142.184000	121681108.12973			
Observation start date	2001-11-09T08:34:38	2001-11-09T08:18:28			
Observation end time	121711142.184000	121712038.53096			
Observation end date	2001-11-09T16:37:58	2001-11-09T16:53:58			
Read mode	TIMED	TIMED			

## 2.3 Aspect





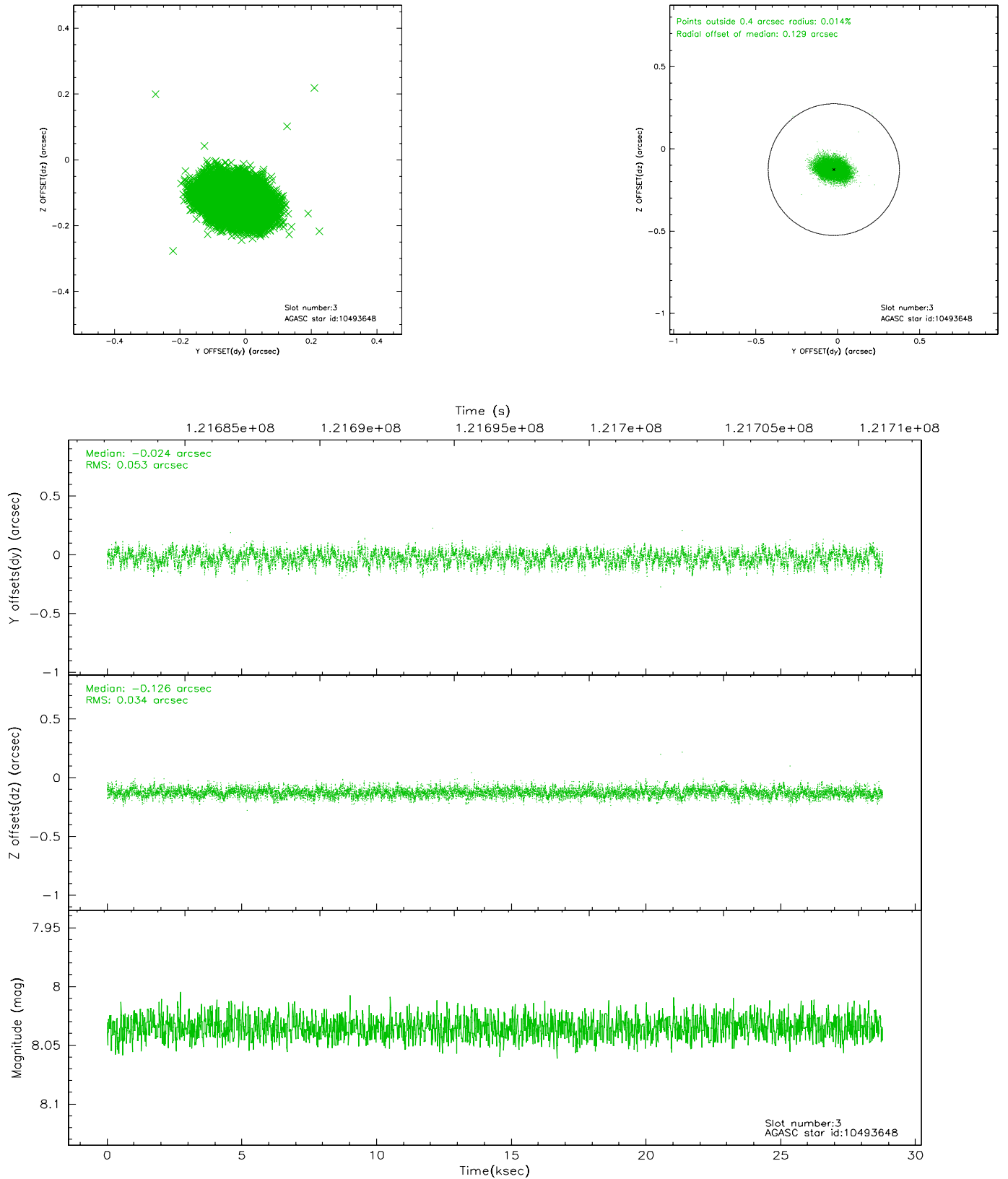
### Slot Statistics

slot	status	id	mag	n_pts	med_dy	med_dz	dr1	dr2	ra	dec	mean_y	mean_z
0	FID	ACIS-S-2	7.11	7016	-0.012	0.037	0.009	0.015	0.000000	0.000000	-755.51	-1727.77
1	FID	ACIS-S-4	7.20	7014	-0.075	-0.004	0.007	0.012	0.000000	0.000000	2157.64	180.62
2	FID	ACIS-S-5	7.23	7012	0.056	-0.024	0.008	0.013	0.000000	0.000000	-1808.20	174.32
3	GUIDE	10493648	8.04	14033	-0.024	-0.126	0.068	0.108	62.917035	5.323059	-2160.62	1788.32
4	GUIDE	10098752	8.89	14029	-0.058	0.008	0.070	0.110	63.736939	4.861472	-1966.32	-1583.04
5	GUIDE	10489120	8.96	14028	0.077	-0.077	0.080	0.125	63.037180	5.195794	-2313.26	1178.09
6	GUIDE	10098632	9.31	14023	-0.015	0.118	0.082	0.128	63.789336	4.774923	-2126.51	-1909.81
7	GUIDE	10493872	9.41	14019	0.020	0.078	0.089	0.145	63.703184	5.387990	-438.77	-454.30

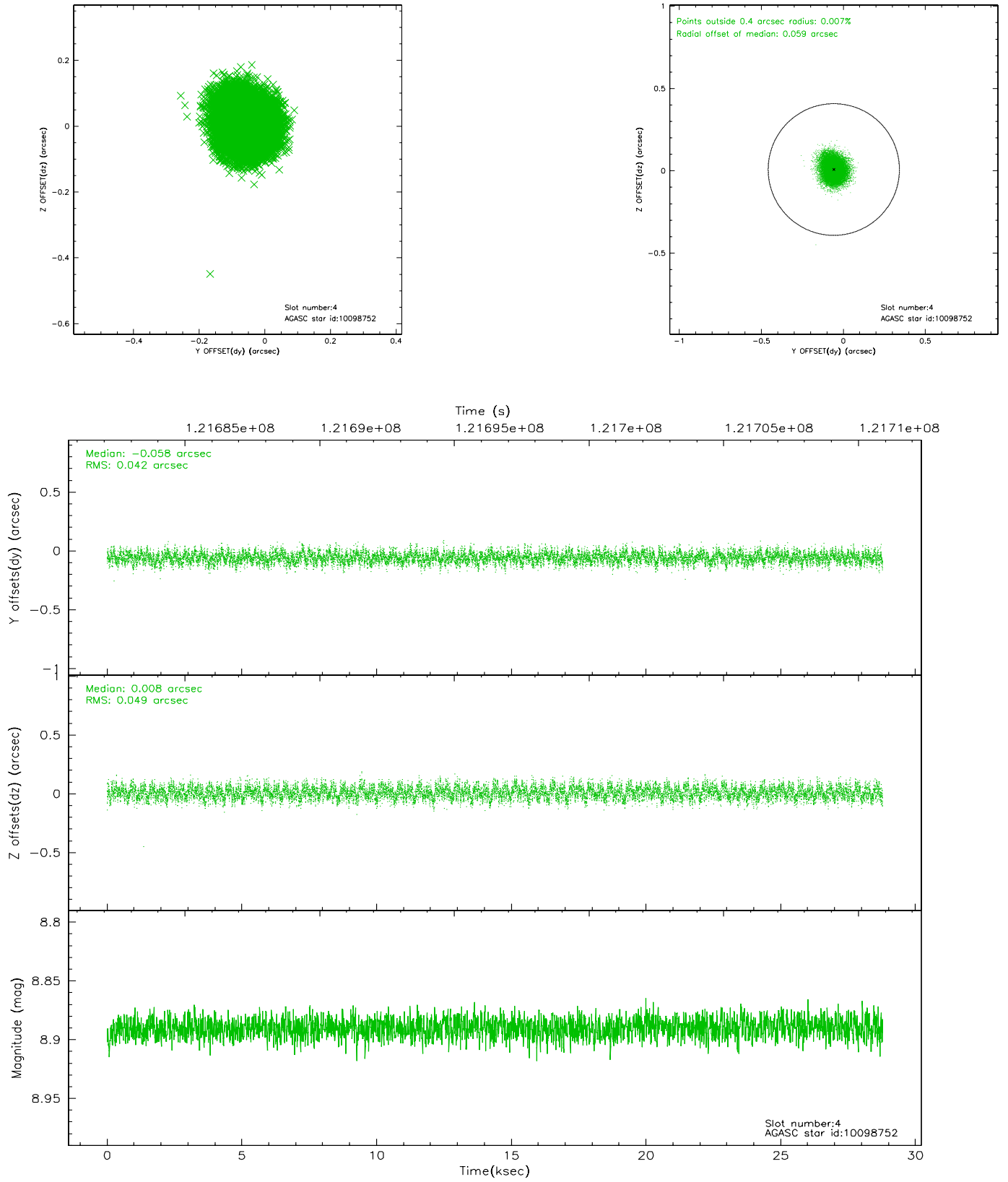


## 2.4 Star Slots

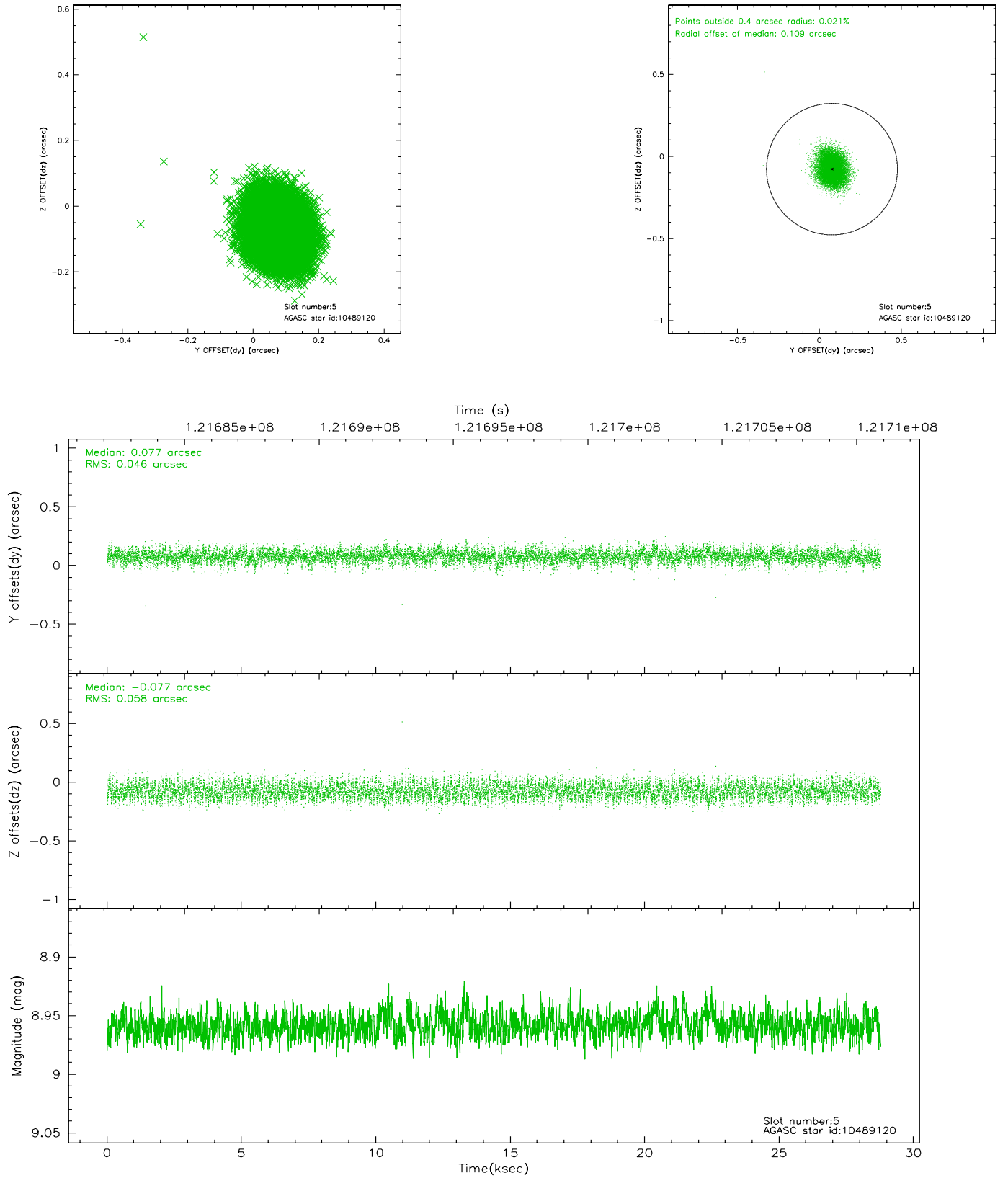
### 2.4.1 Slot 3



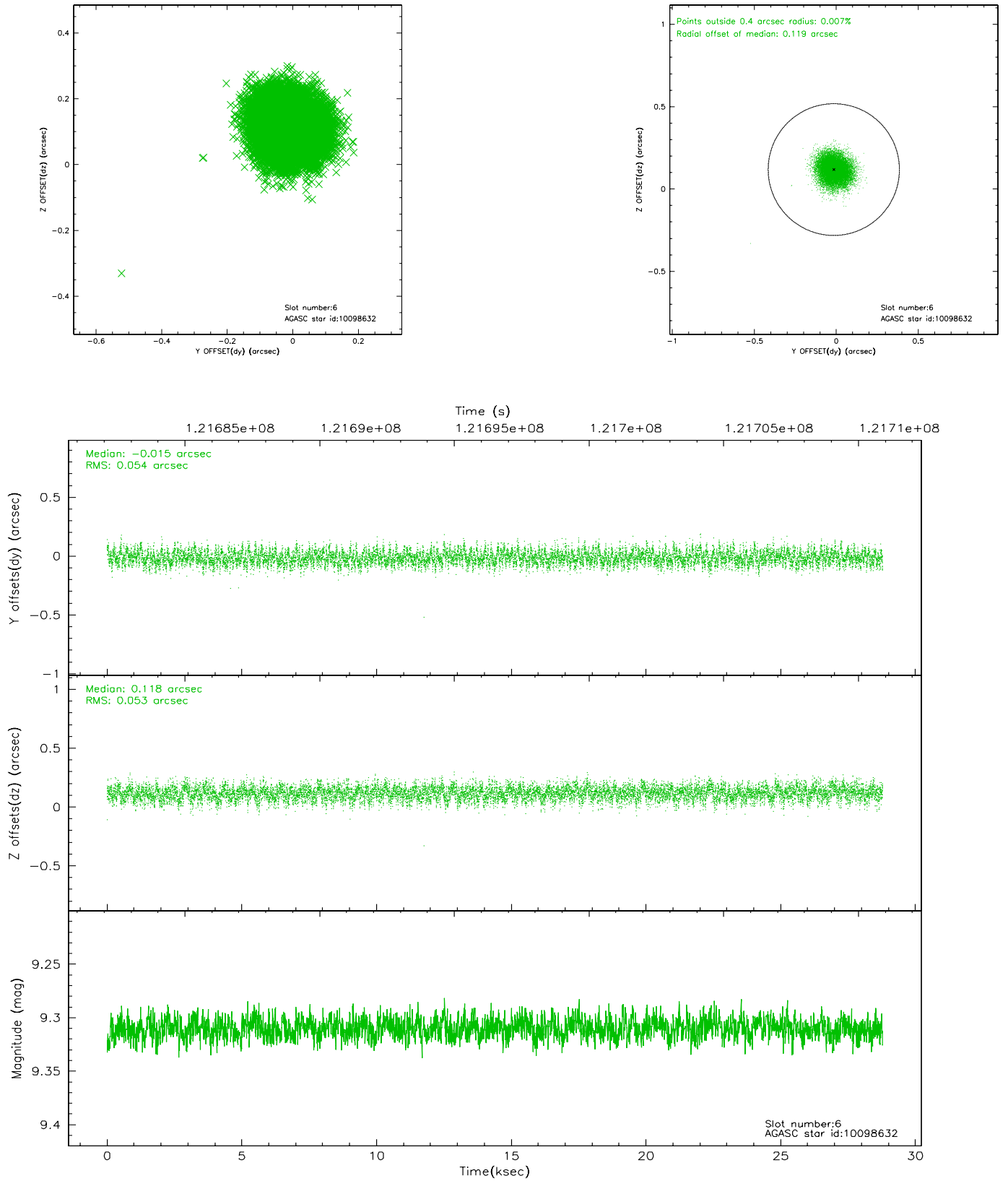
## 2.4.2 Slot 4



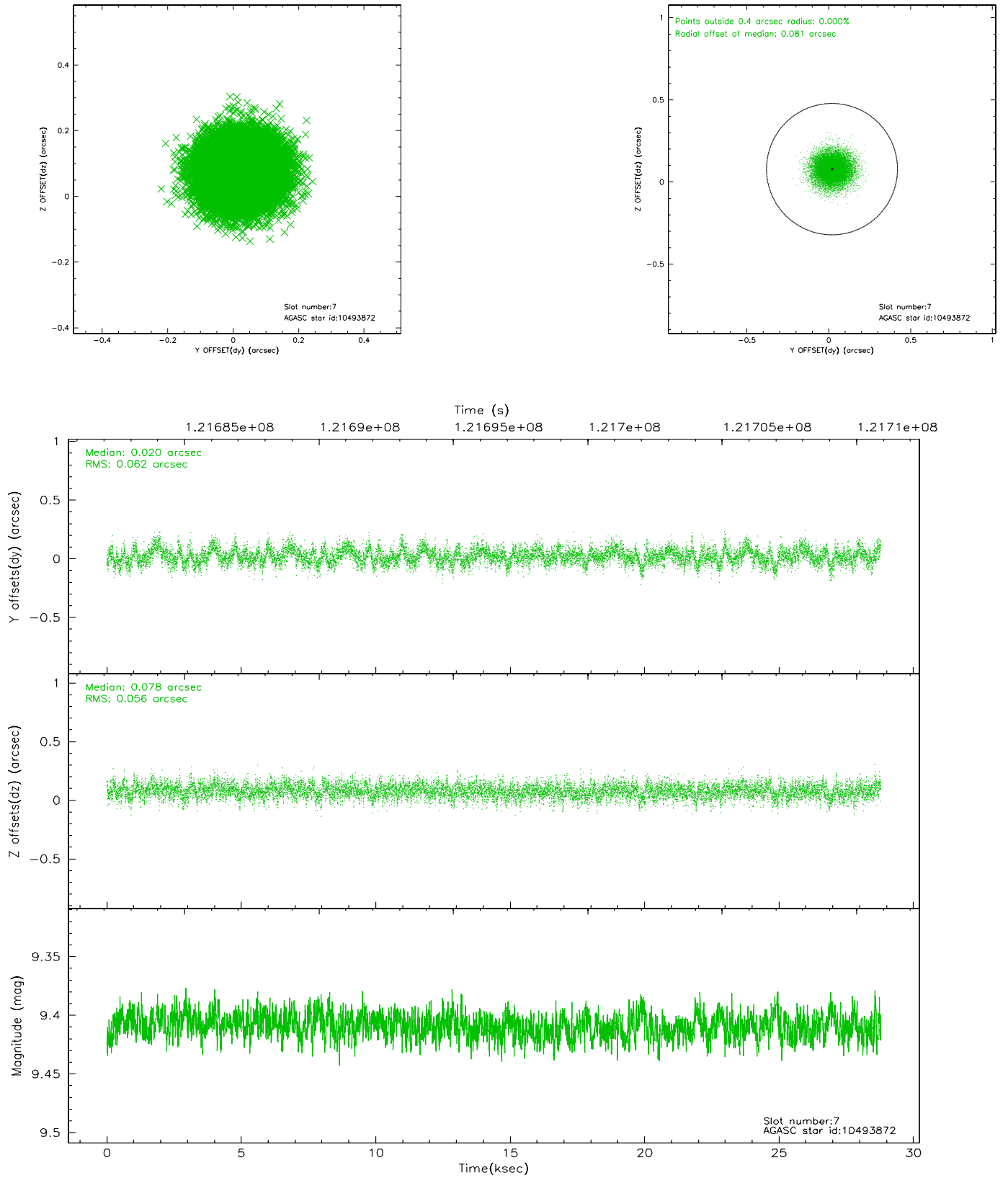
### 2.4.3 Slot 5



## 2.4.4 Slot 6

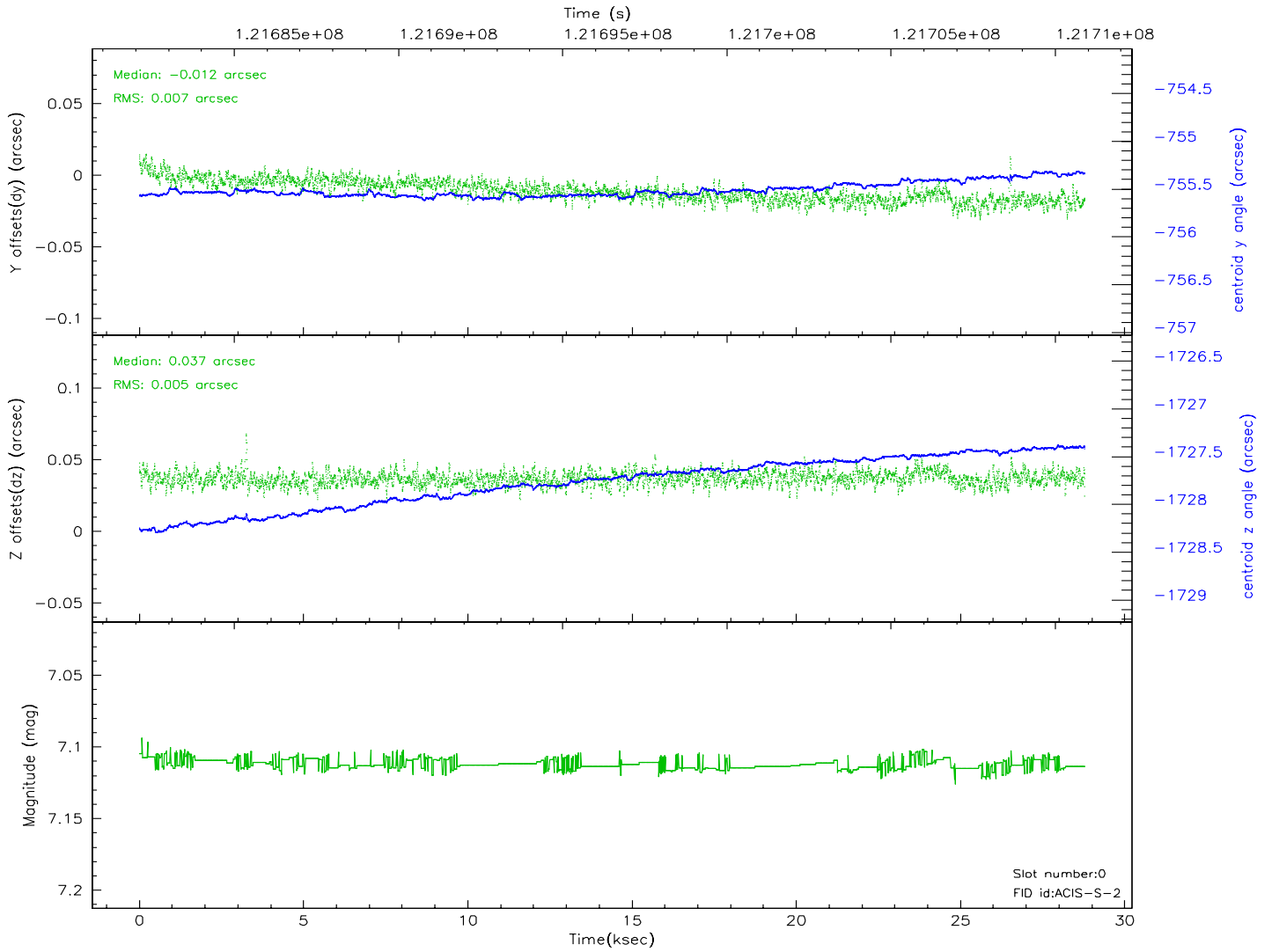
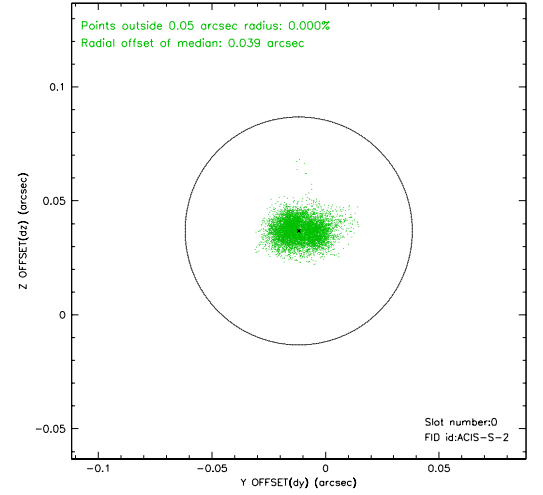
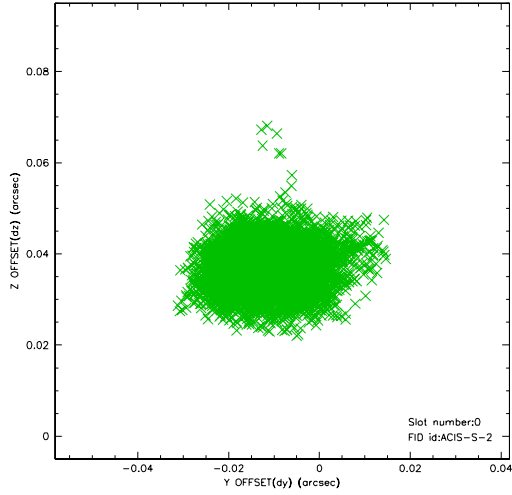


## 2.4.5 Slot 7

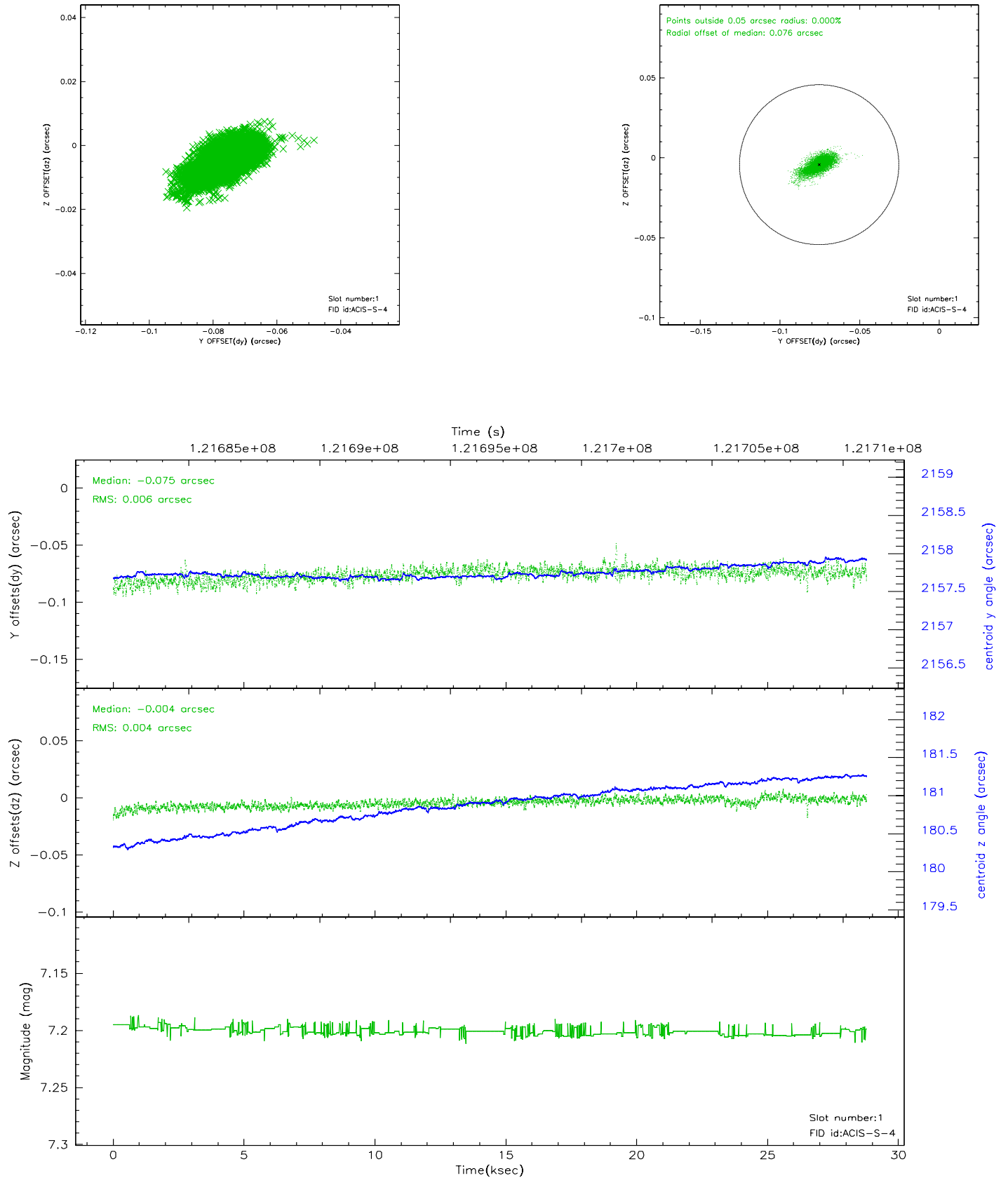


## 2.5 FID Slots

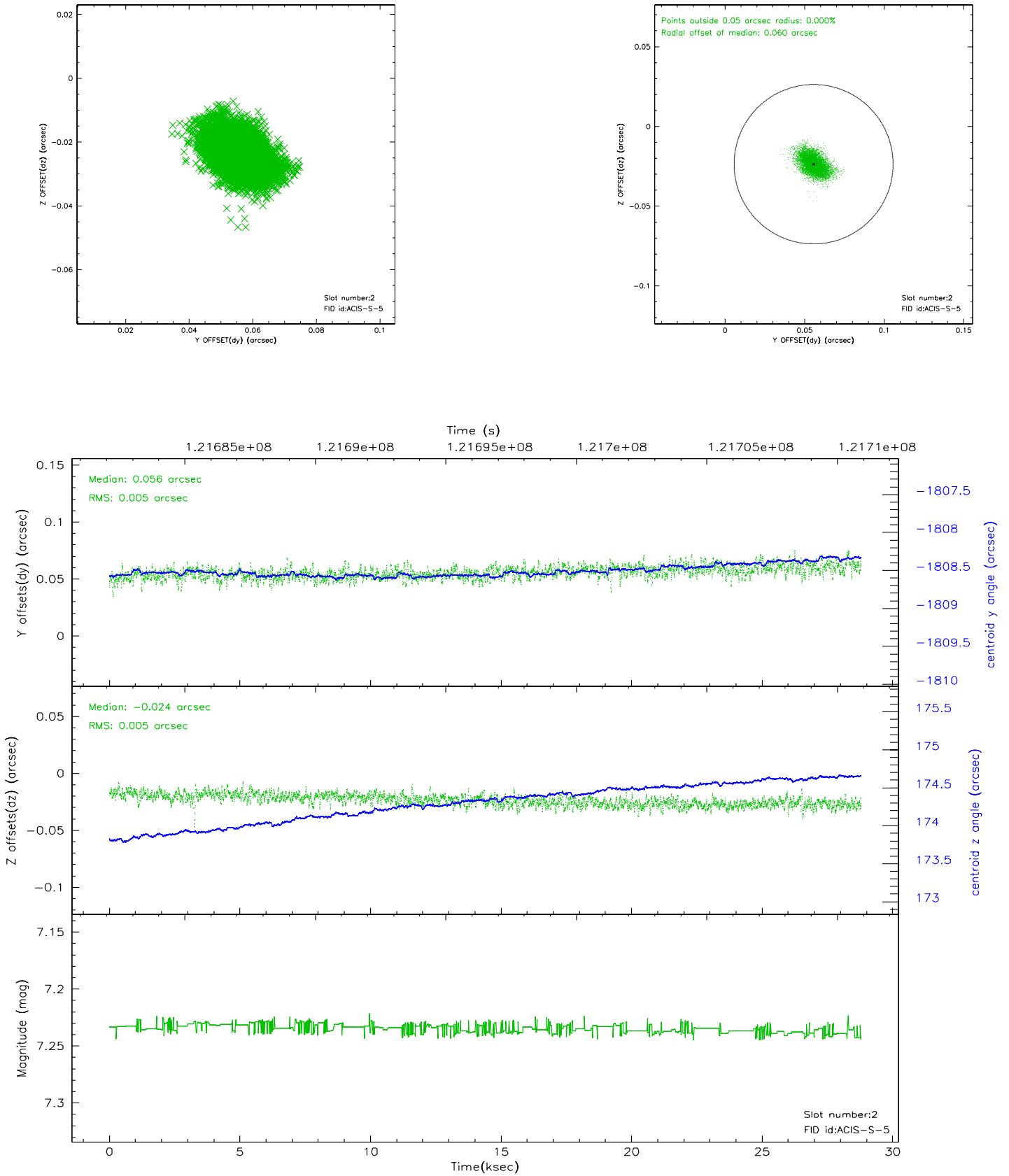
### 2.5.1 Slot 0



## 2.5.2 Slot 1

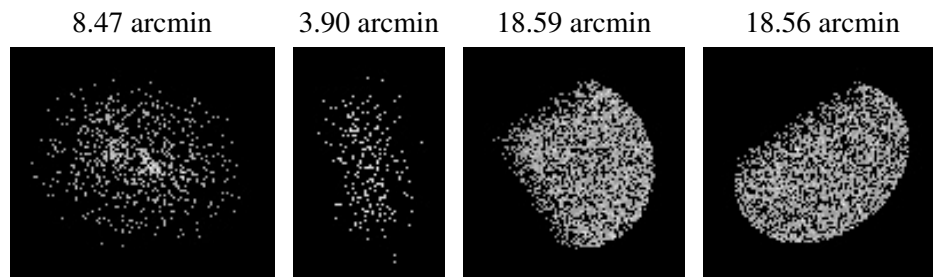


### 2.5.3 Slot 2





### 3 Point Sources



## A Summary

### A.1 Status

V&V Scientist	Beth Sundheim
V&V Date (YYYY-MM-DD)	2007.01.16
V&V Edition	1
V&V Disposition and Status	OK
V&V Charge Time	28.777

### A.2 Comments