

V&V Reference Report

L2 ASCDS Version : 8.4.5

Observation 3275 - L2 Version 4
Chandra X-Ray Center

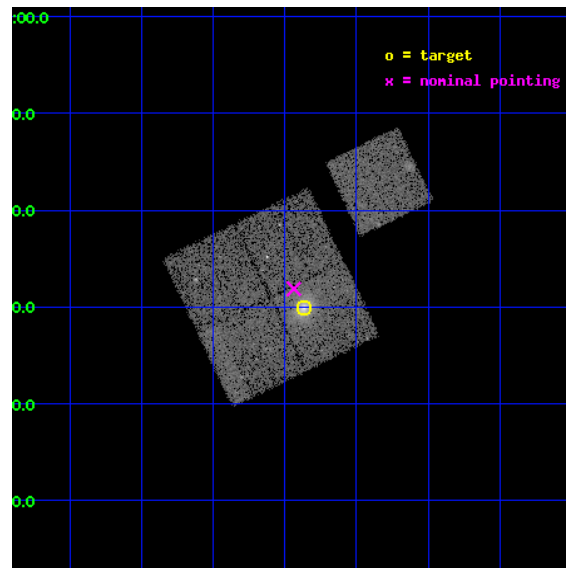
L2 Processing Date : Oct 21 2012

Contents

1	Front	2
2	OBI	3
2.1	OBI	3
2.1.1	Images	3
2.1.2	Bias	3
2.1.3	Parameters	4
2.1.4	Events	4
2.2	Compared Parameters	5
2.3	Aspect	6
2.4	Star Slots	9
2.4.1	Slot 3	9
2.4.2	Slot 4	10
2.4.3	Slot 5	11
2.4.4	Slot 6	12
2.4.5	Slot 7	13
2.5	FID Slots	14
2.5.1	Slot 0	14
2.5.2	Slot 1	15
2.5.3	Slot 2	16
A	Summary	17
A.1	Status	17
A.2	Comments	17

1 Front

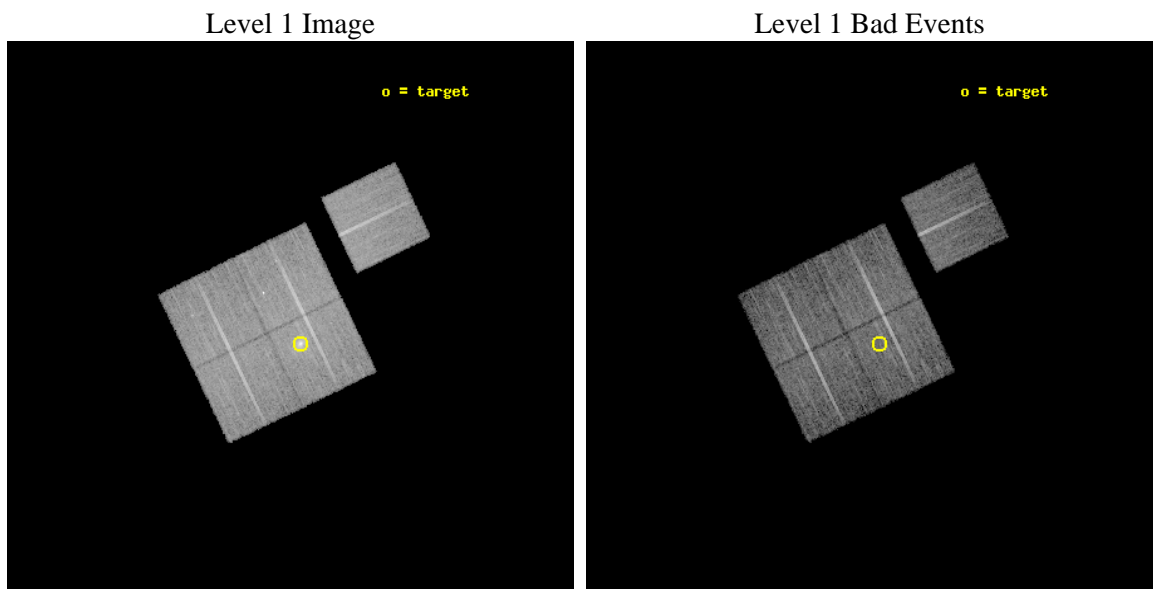
seq_num	800275	Sequence number
obs_id	3275	Observation id
title	MACS: THE X-RAY PROPERTIES OF THE MOST MASSIVE GALAXY CLUSTERS AT $Z>0.3$	Proposal title
observer	Dr. Harald Ebeling	Principal investigator
object	MACSJ1115.8+0129	Source name
dtcycle	0	
cycle	P	events from which exps? Prim/Second/Both
ra_targ	168.96625	Observer's specified target RA [deg]
dec_targ	1.498333	Observer's specified target Dec [deg]
ra_nom	168.9842993369	Nominal RA [deg]
dec_nom	1.5313664803698	Nominal Dec [deg]
roll_nom	64.28072910135	Nominal Roll [deg]
revision	4	Processing version of data
ontime	16110.577008367	Sum of GTIs [s]
livetime	15900.080459318	Livetime [s]
ontime0	16116.858948886	Sum of GTIs [s]
ontime1	16116.858988732	Sum of GTIs [s]
ontime2	16110.57701838	Sum of GTIs [s]
ontime3	16110.577008367	Sum of GTIs [s]
ontime6	16116.858988762	Sum of GTIs [s]
l2events	54601	Number of level 2 events



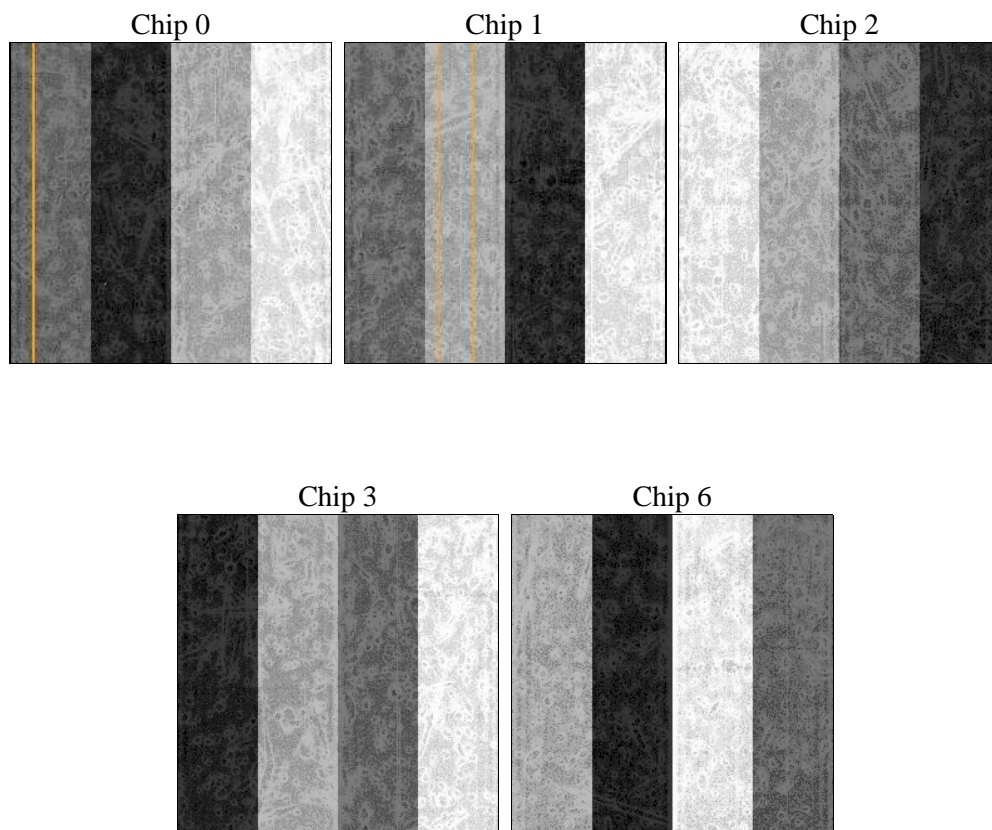
2 OBI

2.1 OBI

2.1.1 Images



2.1.2 Bias



2.1.3 Parameters

obi_num	0	Obi number	sched_exp_time	16000.000000	[s] Scheduled observation exposure time
ascdsver	8.4.5	Processing system revision	ontime	16110.577008367	Sum of GTIs [s]
caldbver	4.5.2	 	ontime0	16116.858948886	Sum of GTIs [s]
date	2012-10-21T05:17:44	Date and time of file creation	ontime1	16116.858988732	Sum of GTIs [s]
revision	4	Processing version of data	ontime2	16110.57701838	Sum of GTIs [s]
			ontime3	16110.577008367	Sum of GTIs [s]
			ontime6	16116.858988762	Sum of GTIs [s]
			l1events	430297	Number of level 1 events

2.1.4 Events

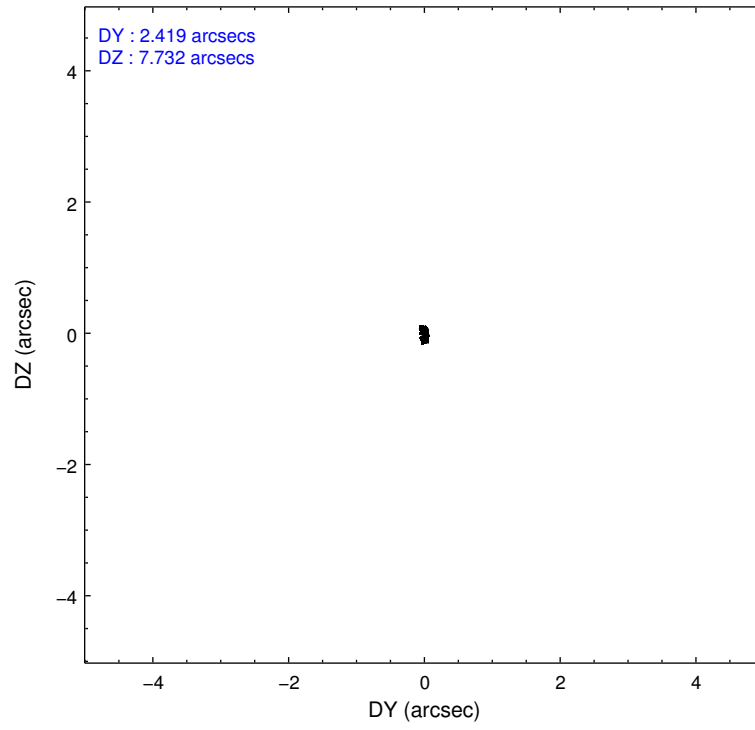
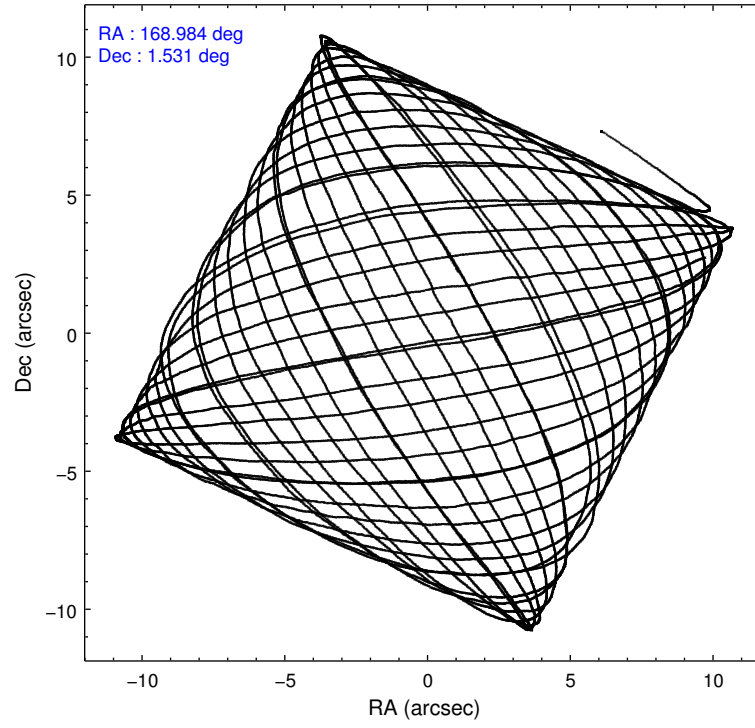
	ccd 0	ccd 1	ccd 2	ccd 3	ccd 6
level 1 events	79787	78818	91903	94319	85470
rejected events	69885	67154	80950	75152	74496
rejected %	87%	85%	88%	79%	87%

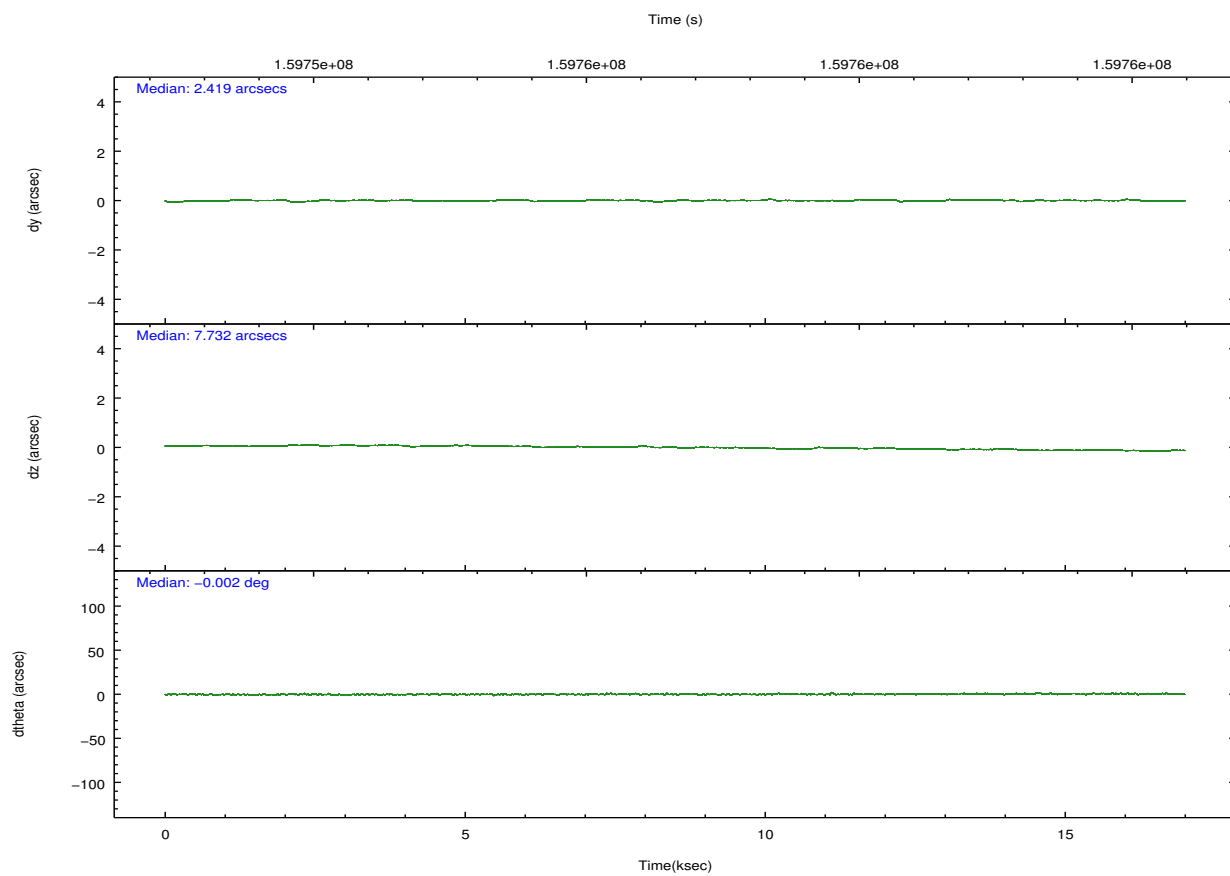
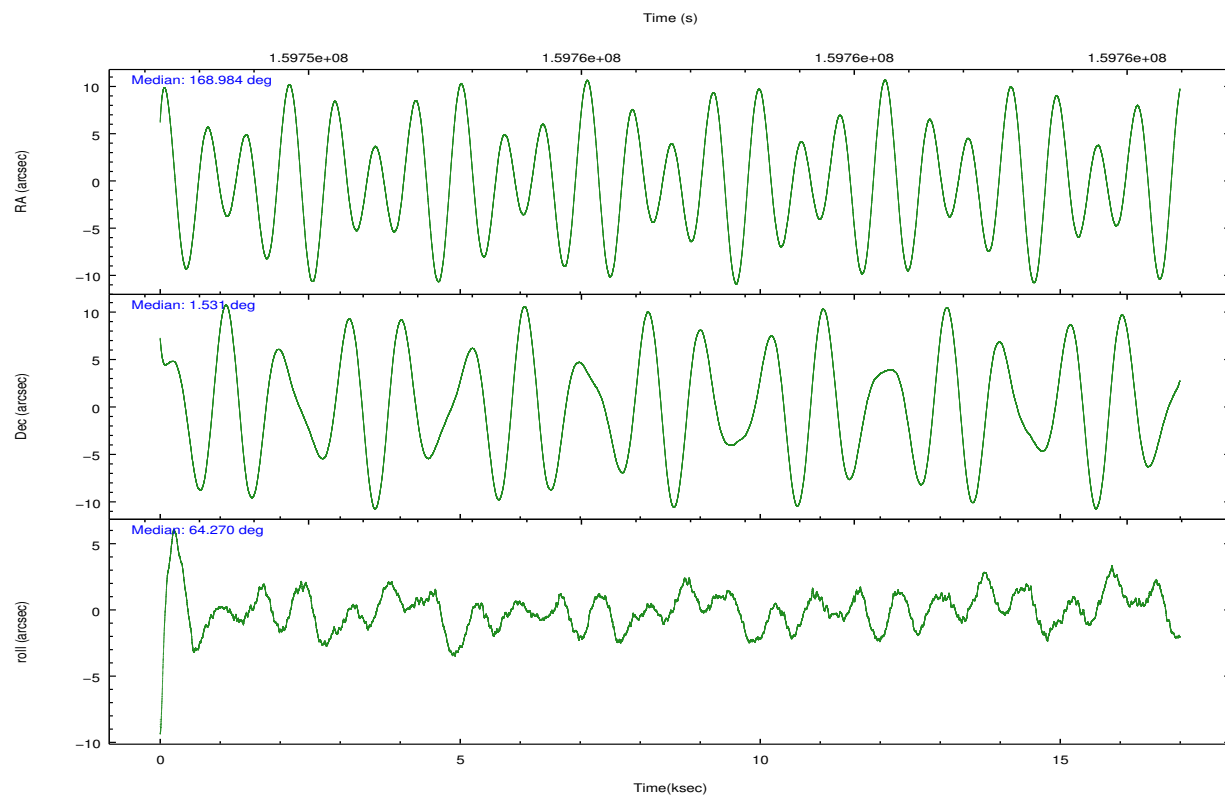
	ccd 0	ccd 1	ccd 2	ccd 3	ccd 6
grade 0 events	4073	5167	5260	12003	5014
	5%	6%	5%	12%	5%
grade 1 events	39	44	45	92	37
	0%	0%	0%	0%	0%
grade 2 events	2078	2303	2163	2778	1971
	2%	2%	2%	2%	2%
grade 3 events	1071	1141	1027	1248	1050
	1%	1%	1%	1%	1%
grade 4 events	1014	1193	951	1286	1033
	1%	1%	1%	1%	1%
grade 5 events	2839	2936	2688	3131	3210
	3%	3%	2%	3%	3%
grade 6 events	1671	1866	1563	1863	1920
	2%	2%	1%	1%	2%
grade 7 events	67002	64168	78206	71918	71235
	83%	81%	85%	76%	83%

2.2 Compared Parameters

Parameter	Planned	Actual	Parameter	Planned	Actual
Instrument	ACIS	ACIS	Obspar format version number	7	7
Detector	ACIS-01236	ACIS-01236	Obspar file type	PREDICTED	ACTUAL
Grating	NONE	NONE	Obspar update status	NONE	UPDATED
Data mode	VFAINT	VFAINT	Number of optional ACIS chips dropped	0	0
Observation mode	POINTING	POINTING	On-chip summing requested	N	N
[deg] Pointing RA	168.986466	168.9842993369004	Subarray requested	NONE	NONE
[deg] Pointing Dec	1.504078	1.53136648036984	Alternating exposures requested	N	N
[deg] Pointing Roll	64.071985	64.28072910134991	[s] Primary exposure time	0.000000	3.1
[mm] SIM focus pos	-0.782348	-0.7809083437167272			
[mm] SIM defocus	0	0.001439871863259334			
[mm] SIM translation stage pos	-227.742463	-227.734108438797			
[mm] SIM translation stage offset	-5.85	-5.858344564132665			
[s] Observation start time (MET)	159749123.184000	159747752.38767			
Observation start date	2003-01-23T22:44:19	2003-01-23T22:22:32			
[s] Observation end time (MET)	159765123.184000	159765797.00092			
Observation end date	2003-01-24T03:10:59	2003-01-24T03:23:17			
Read mode	TIMED	TIMED			

2.3 Aspect



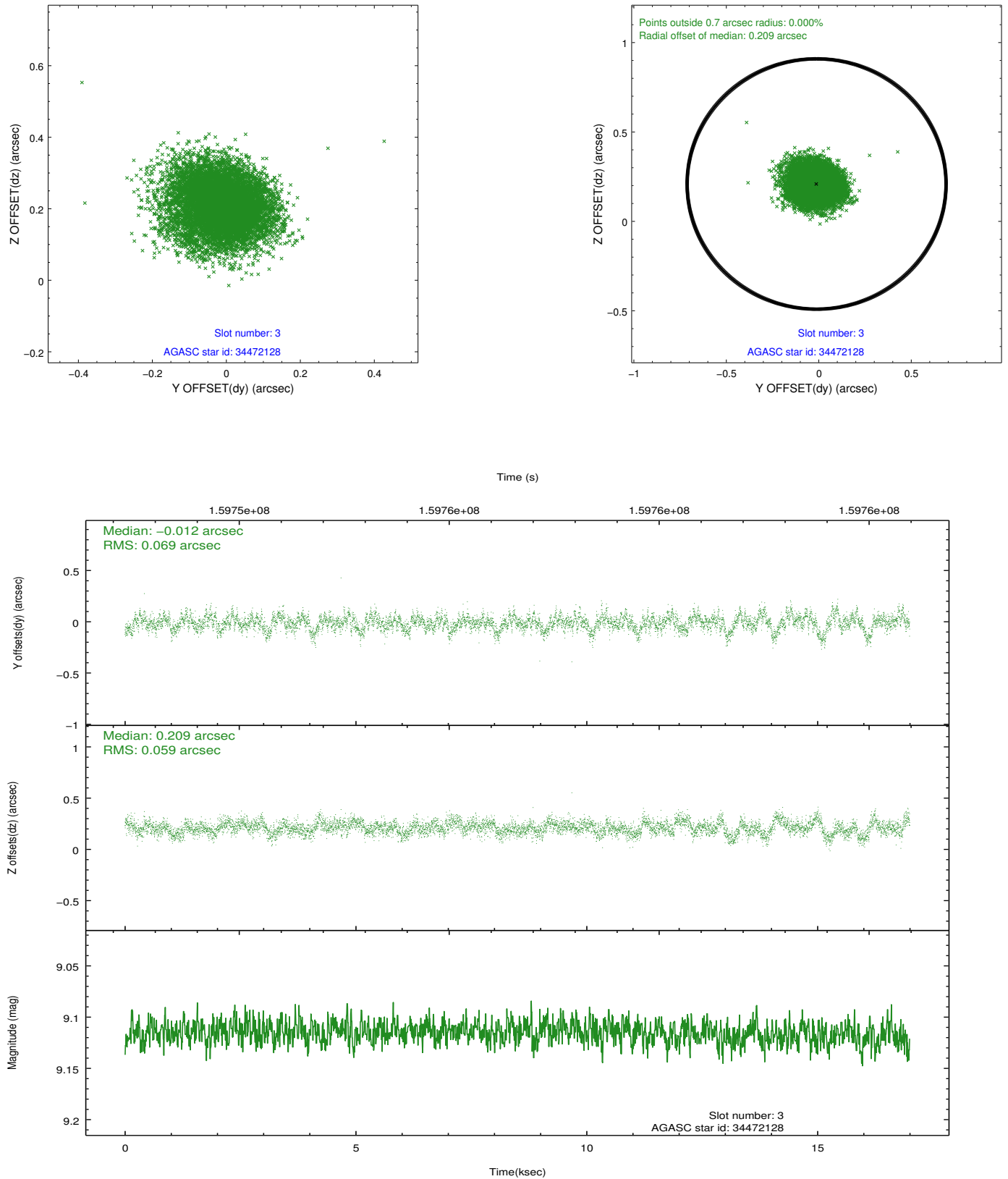


Slot Statistics

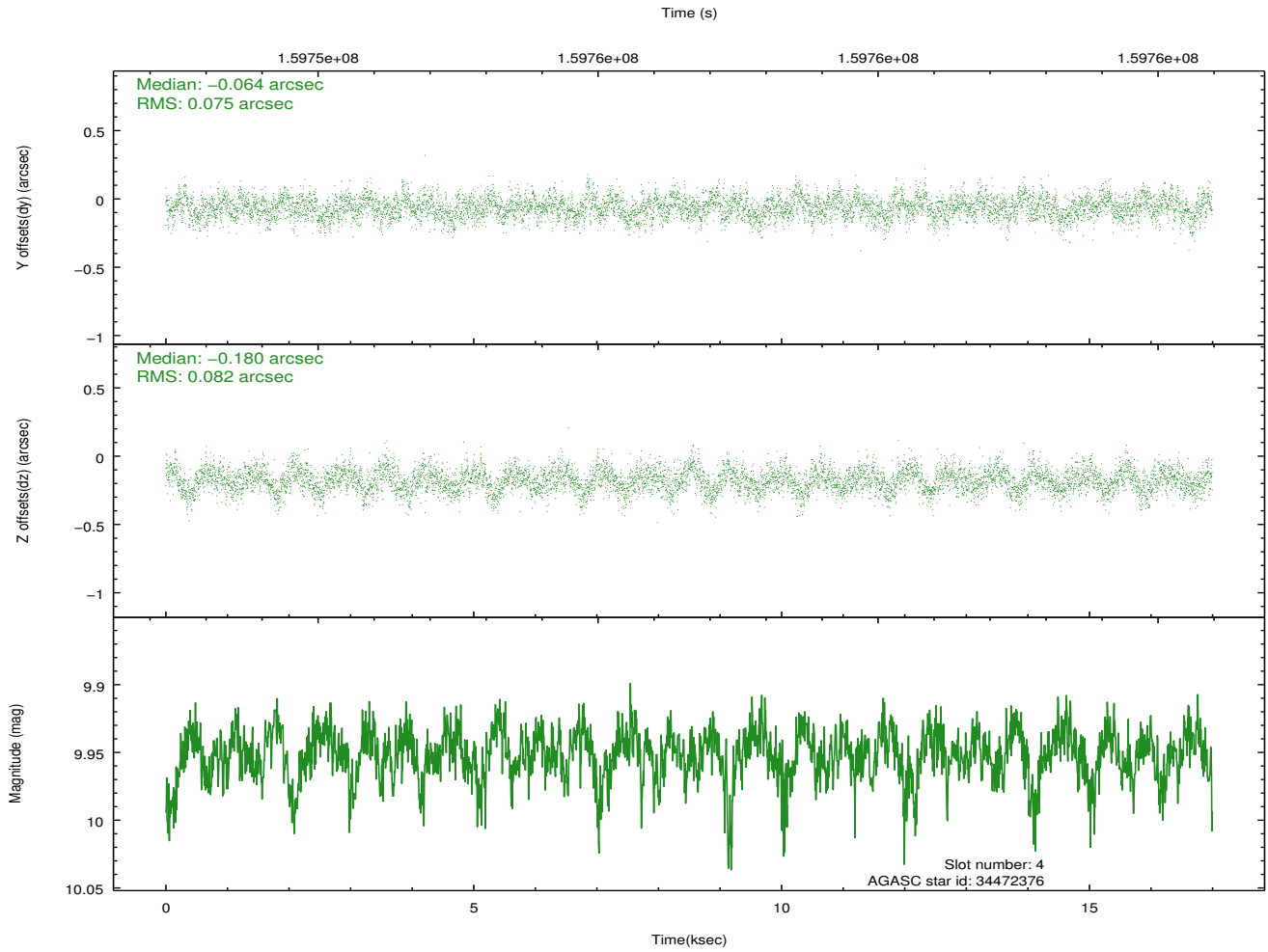
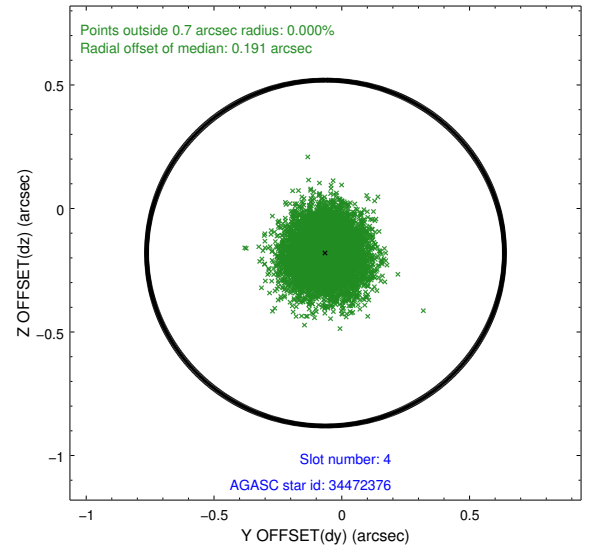
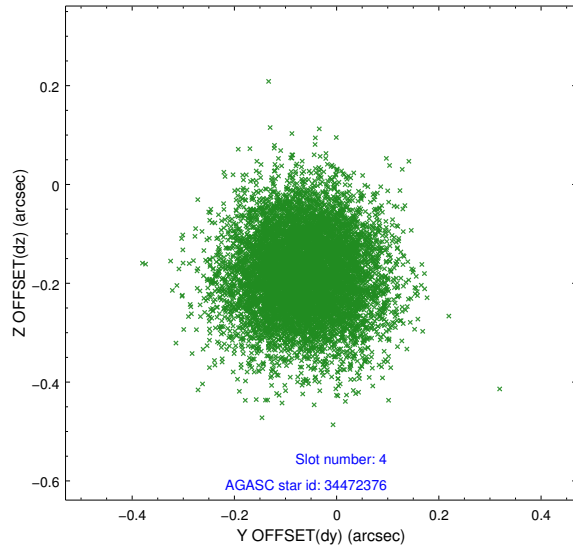
slot	status	id	mag	n_pts	med_dy	med_dz	dr1	dr2	ra	dec	mean_y	mean_z
0	FID	ACIS-I-1	7.24	4146	0.035	0.003	0.008	0.015	0.000000	0.000000	937.31	-951.38
1	FID	ACIS-I-5	7.24	4146	-0.139	0.063	0.008	0.015	0.000000	0.000000	-1810.82	946.03
2	FID	ACIS-I-6	7.25	4146	0.013	0.005	0.007	0.013	0.000000	0.000000	402.57	1590.75
3	GUIDE	34472128	9.12	8290	-0.012	0.209	0.095	0.159	169.776116	1.701808	1883.83	-2243.60
4	GUIDE	34472376	9.95	8288	-0.064	-0.180	0.118	0.194	168.818822	2.185261	1941.99	1614.46
5	GUIDE	34473872	10.06	8285	0.185	0.142	0.259	0.385	169.002006	1.482619	-44.46	-83.76
6	GUIDE	34475736	9.36	8283	0.017	-0.062	0.110	0.167	168.975954	2.086690	1870.19	950.69
7	GUIDE	34476208	8.12	8291	-0.126	-0.114	0.086	0.133	168.824612	2.063437	1556.32	1404.15

2.4 Star Slots

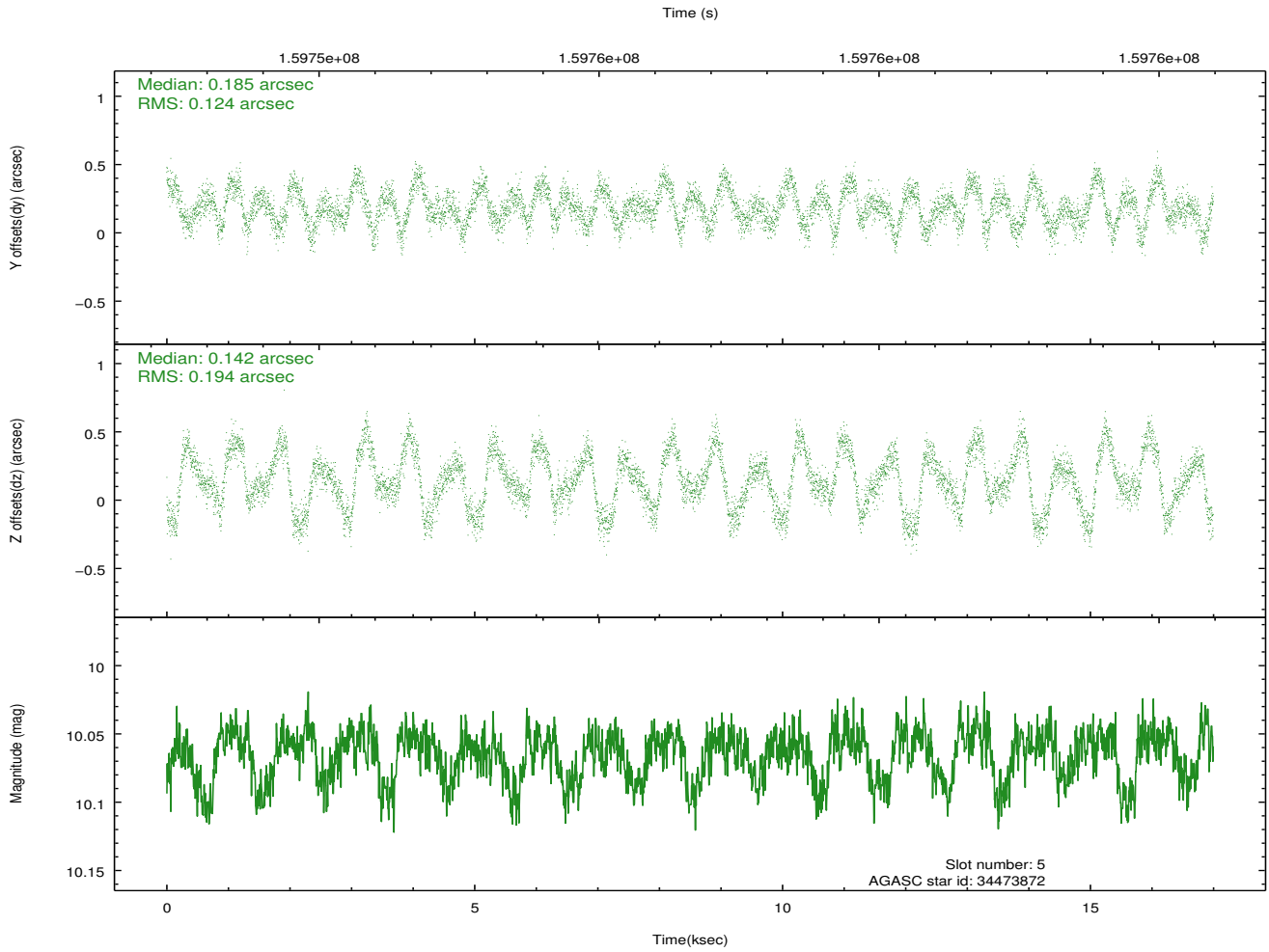
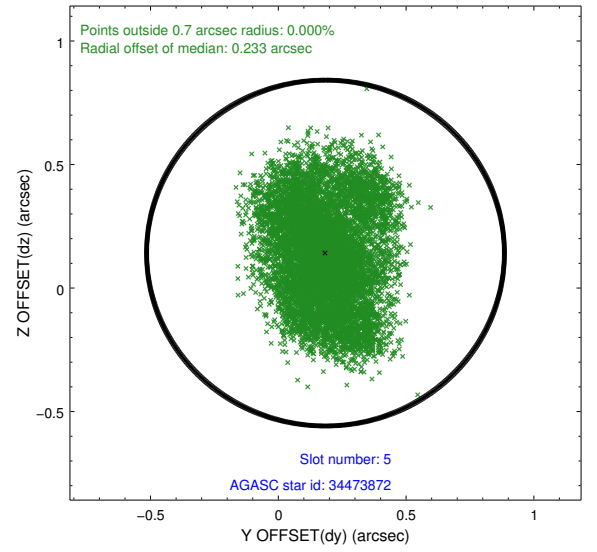
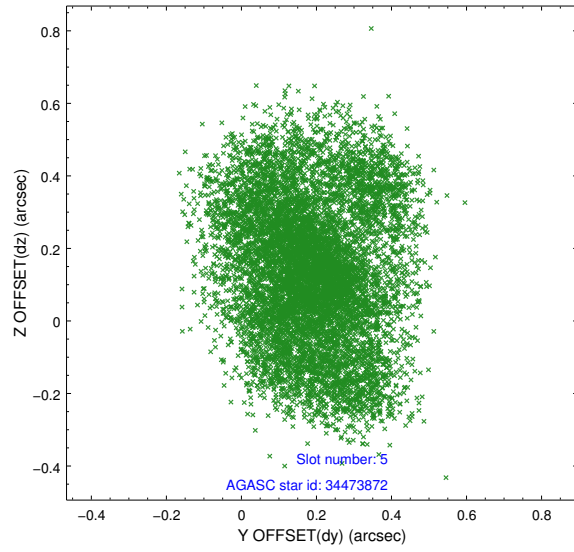
2.4.1 Slot 3



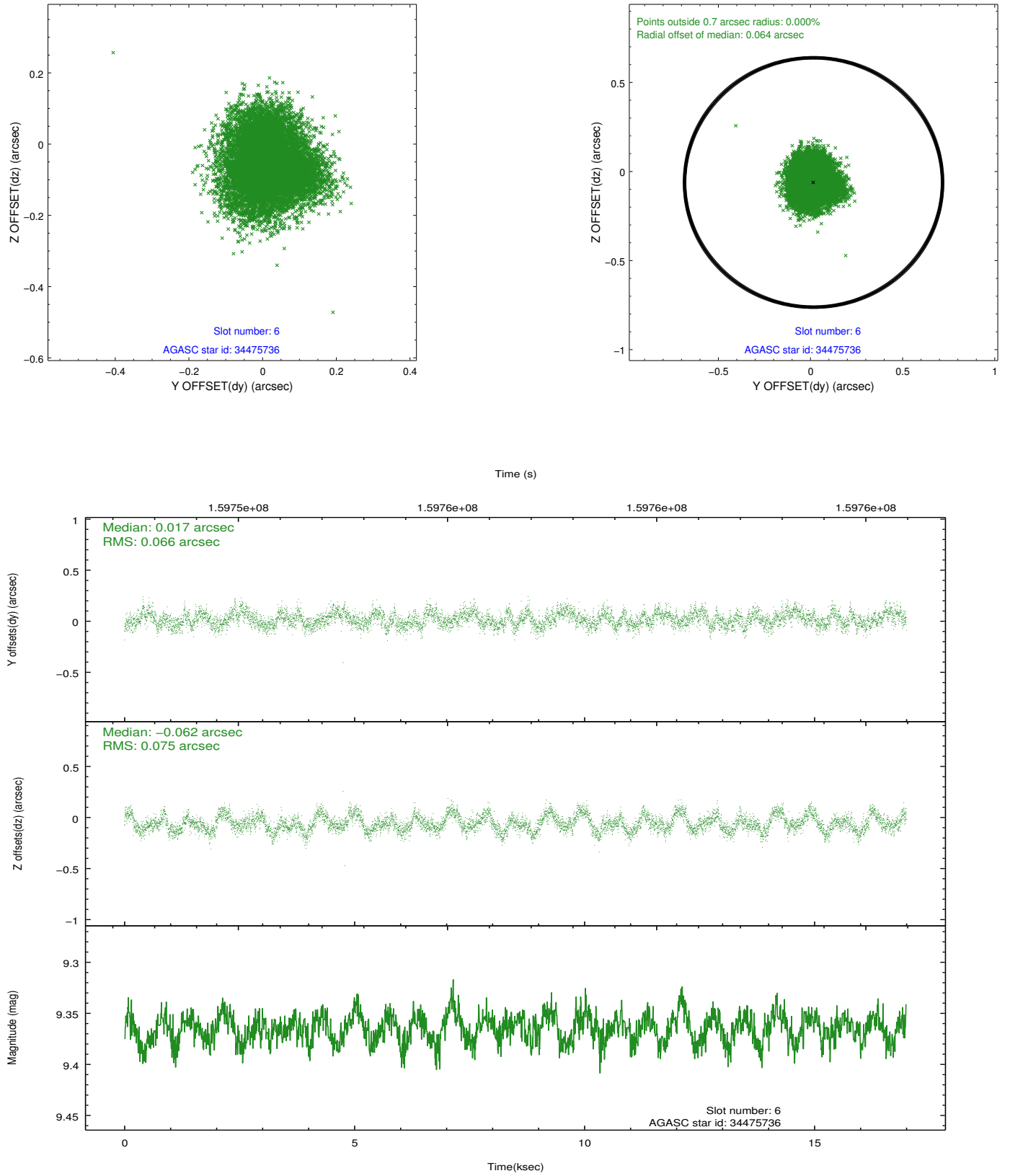
2.4.2 Slot 4



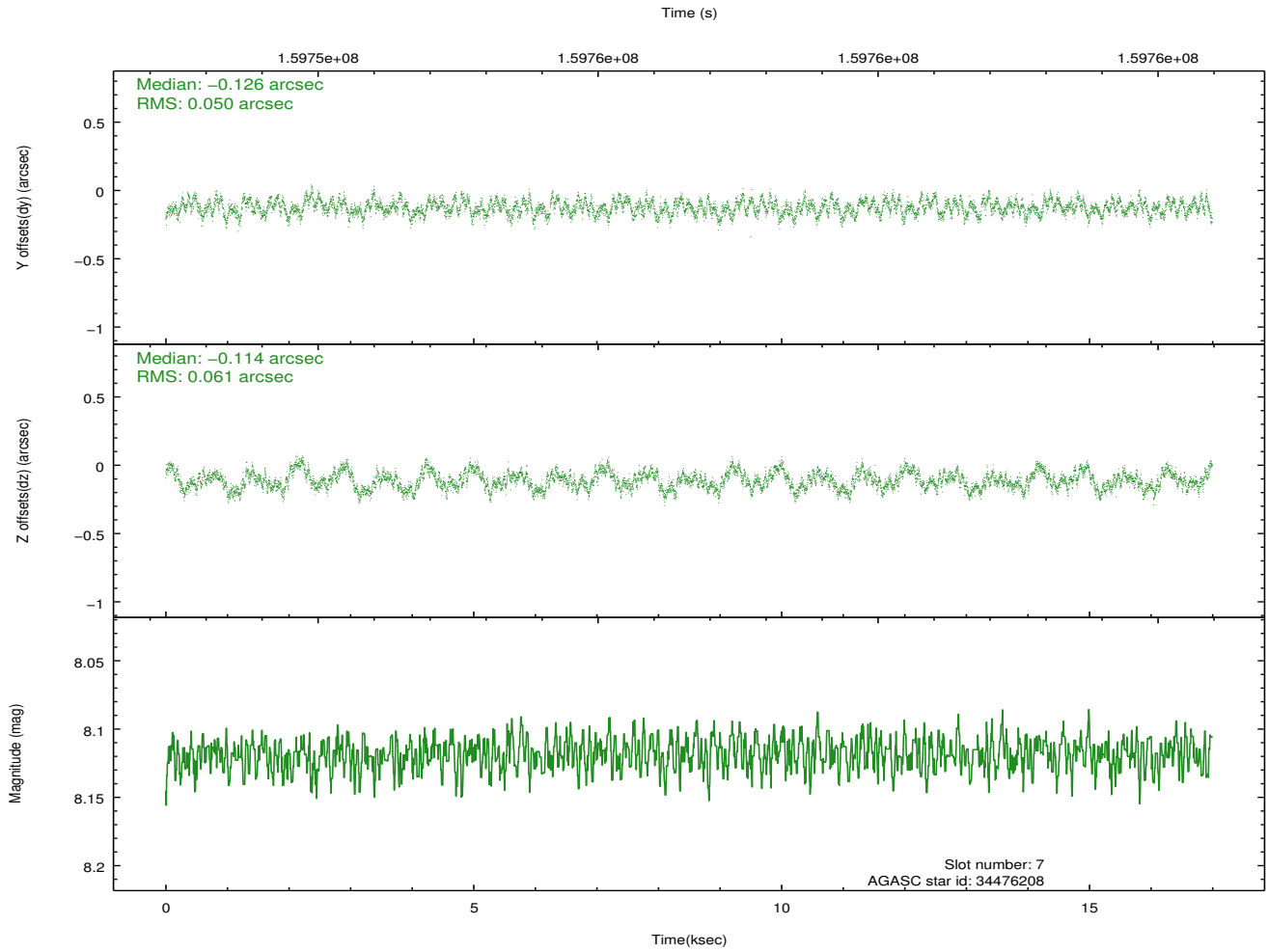
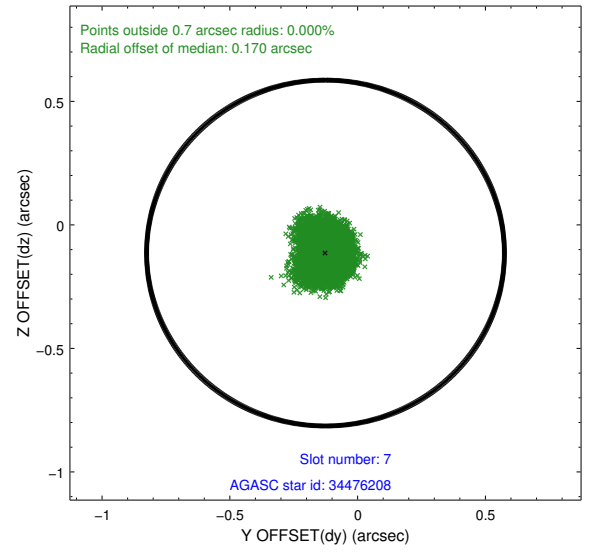
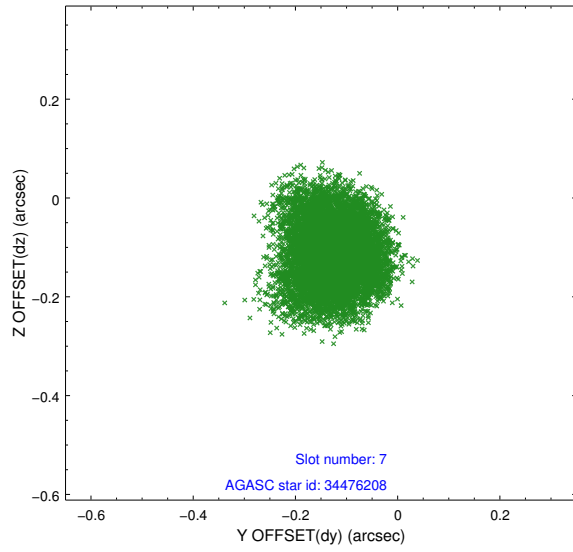
2.4.3 Slot 5



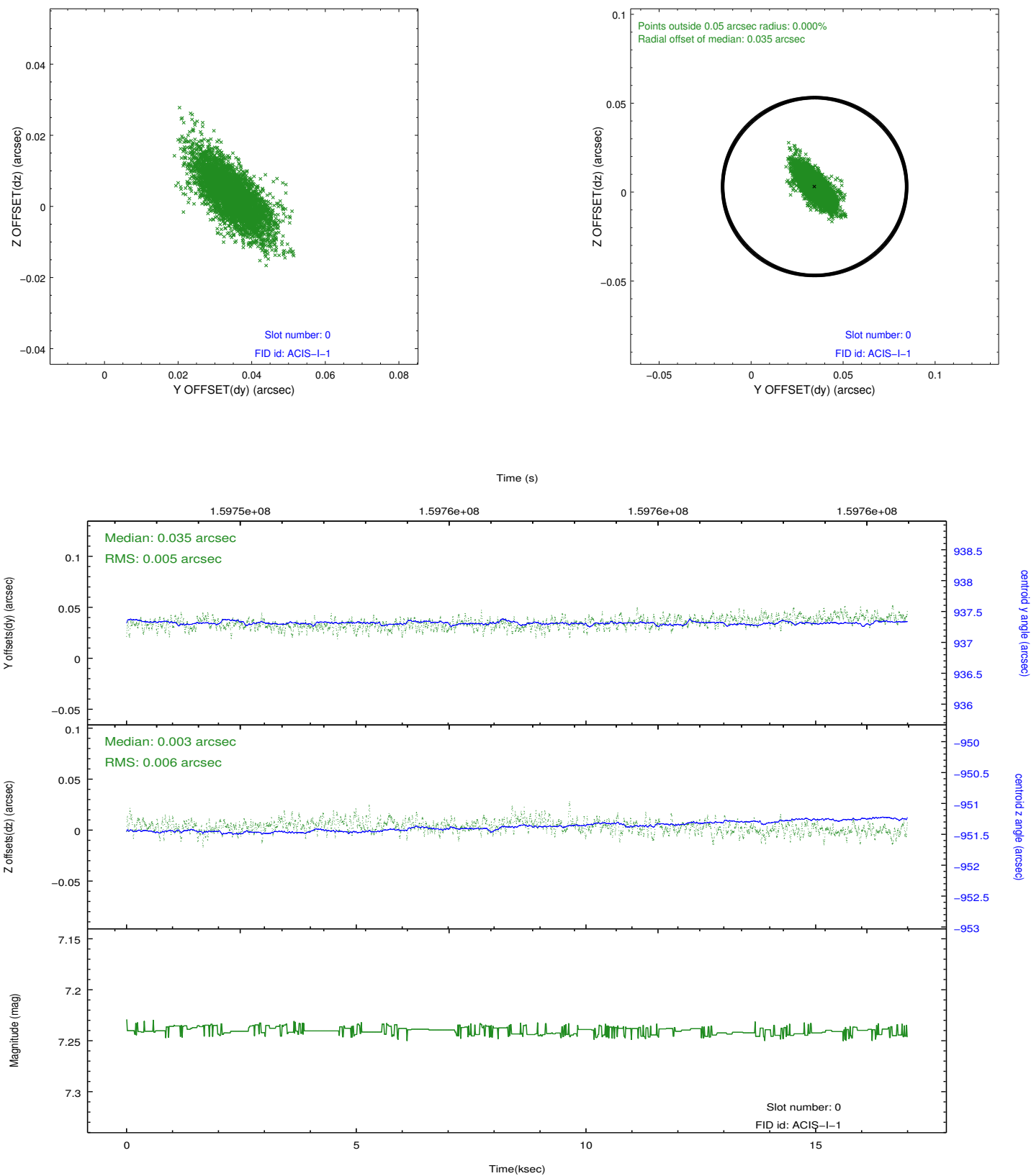
2.4.4 Slot 6



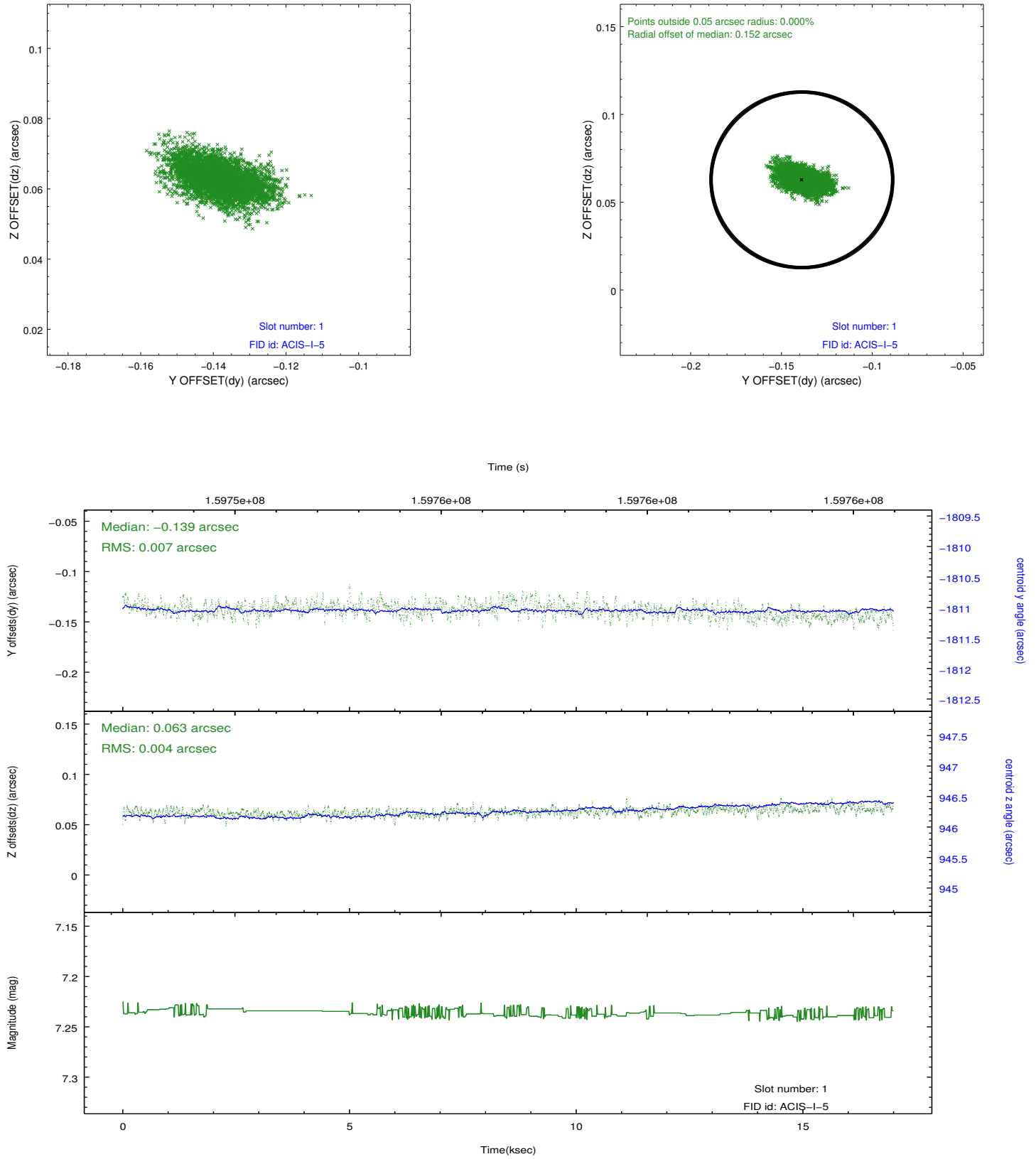
2.4.5 Slot 7



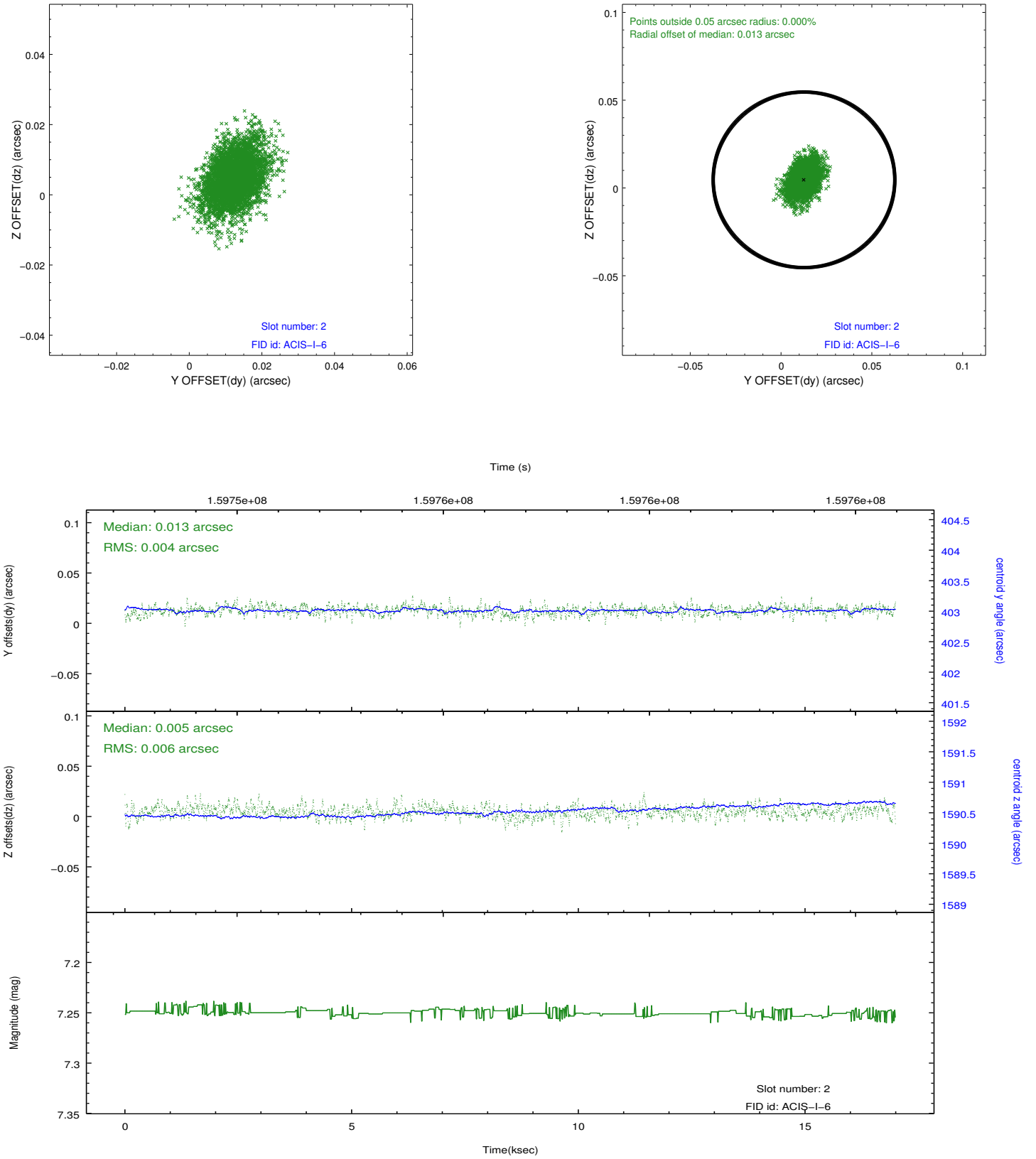
2.5.1 Slot 0



2.5.2 Slot 1



2.5.3 Slot 2



A Summary

A.1 Status

V&V Scientist	Jen Lauer
V&V Date (YYYY-MM-DD)	2012.11.01
V&V Edition	1
V&V Disposition and Status	OK
V&V Charge Time	16.113

A.2 Comments