

V&V Reference Report

L2 ASCDS Version : 7.6.8

Observation 3275 - L2 Version 001
Chandra X-Ray Center

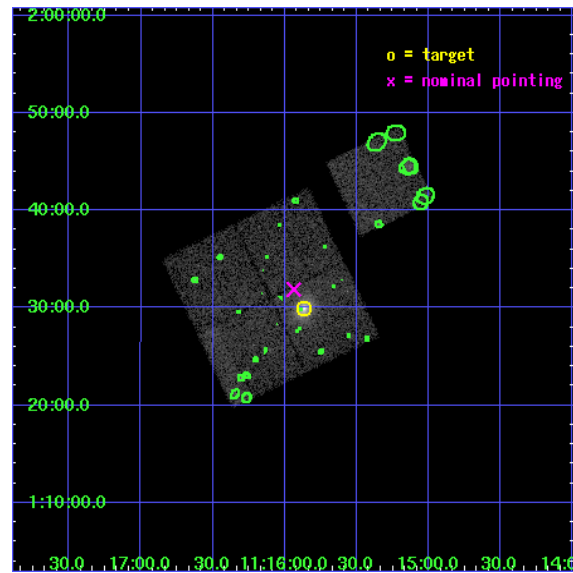
L2 Processing Date : Jul 19 2006

Contents

1	Front	2
2	OBI	3
2.1	OBI	3
2.1.1	Images	3
2.1.2	Bias	3
2.1.3	Parameters	4
2.1.4	Events	4
2.2	Compared Parameters	5
2.3	Aspect	6
2.4	Star Slots	9
2.4.1	Slot 3	9
2.4.2	Slot 4	10
2.4.3	Slot 5	11
2.4.4	Slot 6	12
2.4.5	Slot 7	13
2.5	FID Slots	14
2.5.1	Slot 0	14
2.5.2	Slot 1	15
2.5.3	Slot 2	16
3	Point Sources	17
A	Summary	18
A.1	Status	18
A.2	Comments	18

1 Front

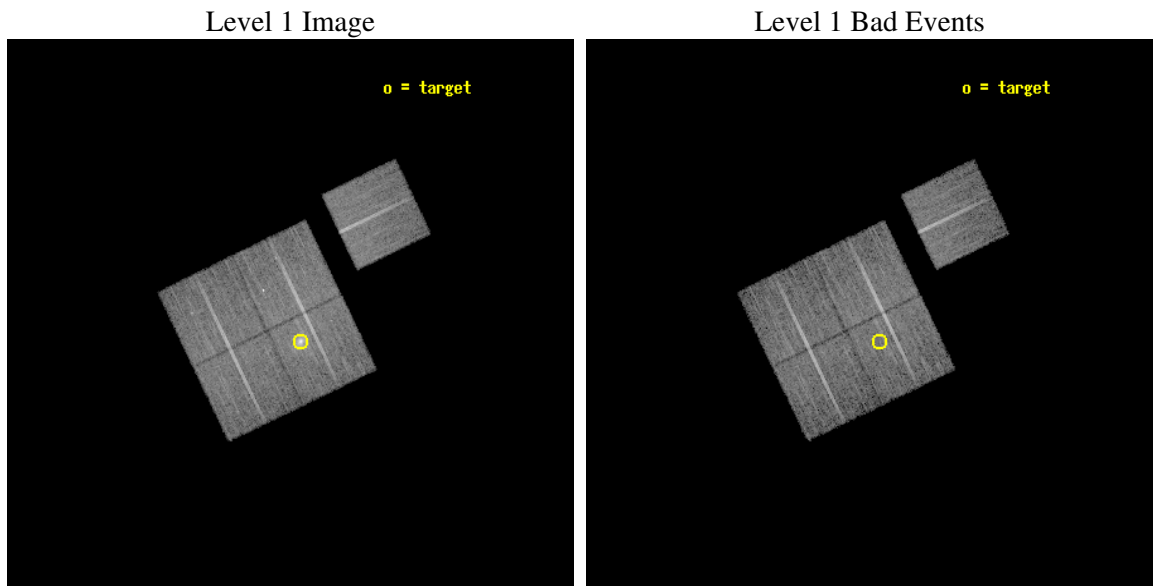
seq_num	800275
obs_id	3275
title	MACS: THE X-RAY PROPERTIES OF THE MOST MASSIVE GALAXY CLUSTERS AT $Z>0.3$
observer	Dr Harald Ebeling
object	MACSJ1115.8+0129
dtcycle	0
cycle	P
ra_targ	168.96625
dec_targ	1.498333
ra_nom	168.98429934008
dec_nom	1.5313664828019
roll_nom	64.280729100888
revision	3
ontime	16110.577008396
livetime	15900.080459347
ontime0	16116.858948916
ontime1	16116.858988762
ontime2	16110.57701841
ontime3	16110.577008396
ontime6	16116.858988792
l2events	54678



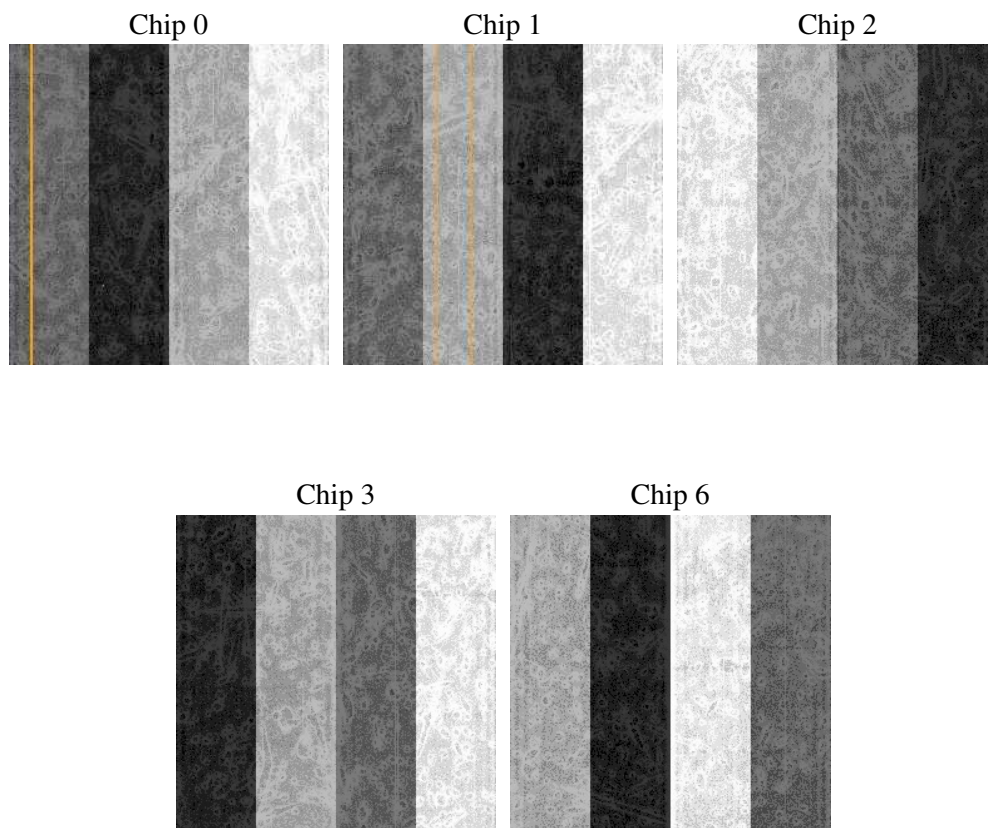
2 OBI

2.1 OBI

2.1.1 Images



2.1.2 Bias



2.1.3 Parameters

obi_num	0
ascdsver	7.6.8
caldbver	3.2.2
date	2006-07-19T08:24:56
revision	3

sched_exp_time	16000.000000
ontime	16116.513105303
ontime0	16122.795065731
ontime1	16122.795105577
ontime2	16116.513115317
ontime3	16116.513105303
ontime6	16122.795085698
l1events	430297

2.1.4 Events

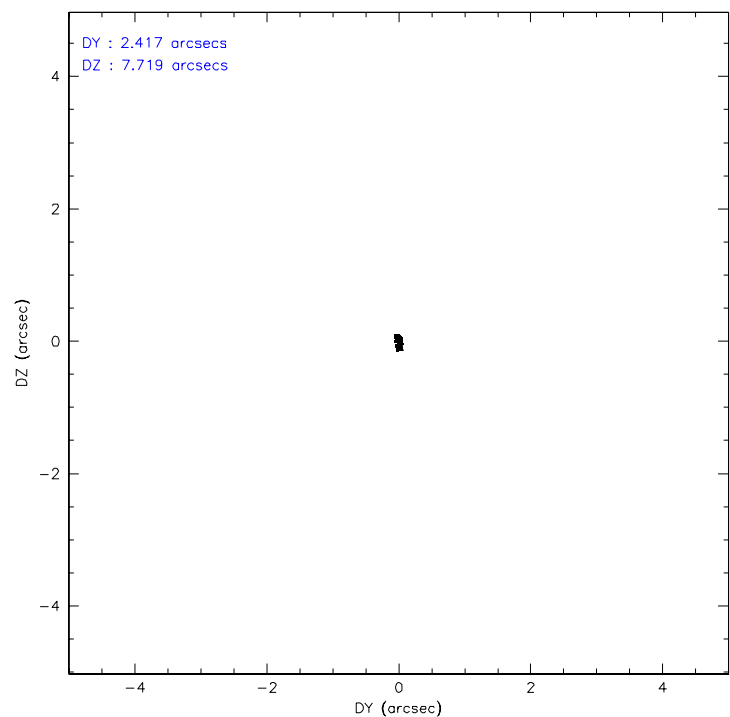
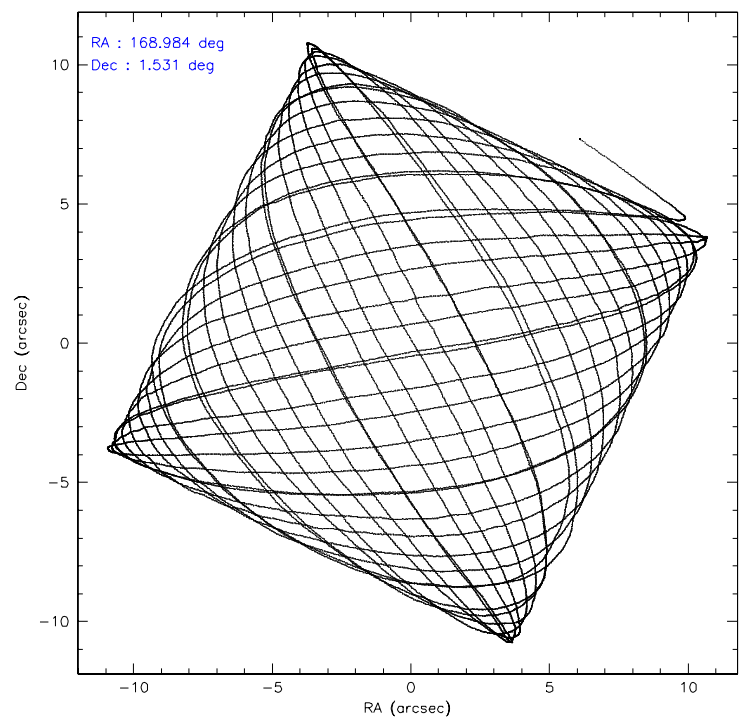
	ccd 0	ccd 1	ccd 2	ccd 3	ccd 6
level 1 events	79787	78818	91903	94319	85470
rejected events	69884	67153	80948	75147	74491
rejected %	87%	85%	88%	79%	87%

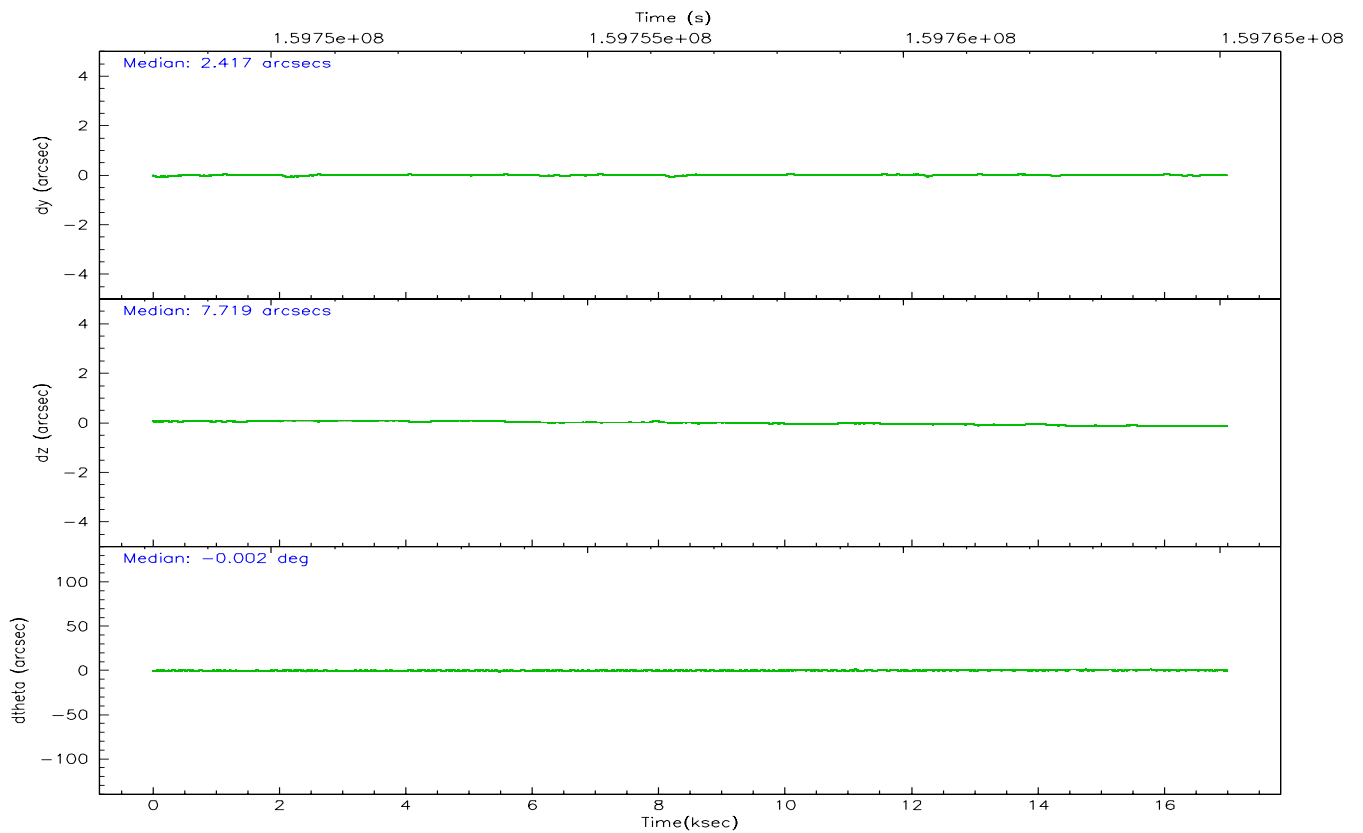
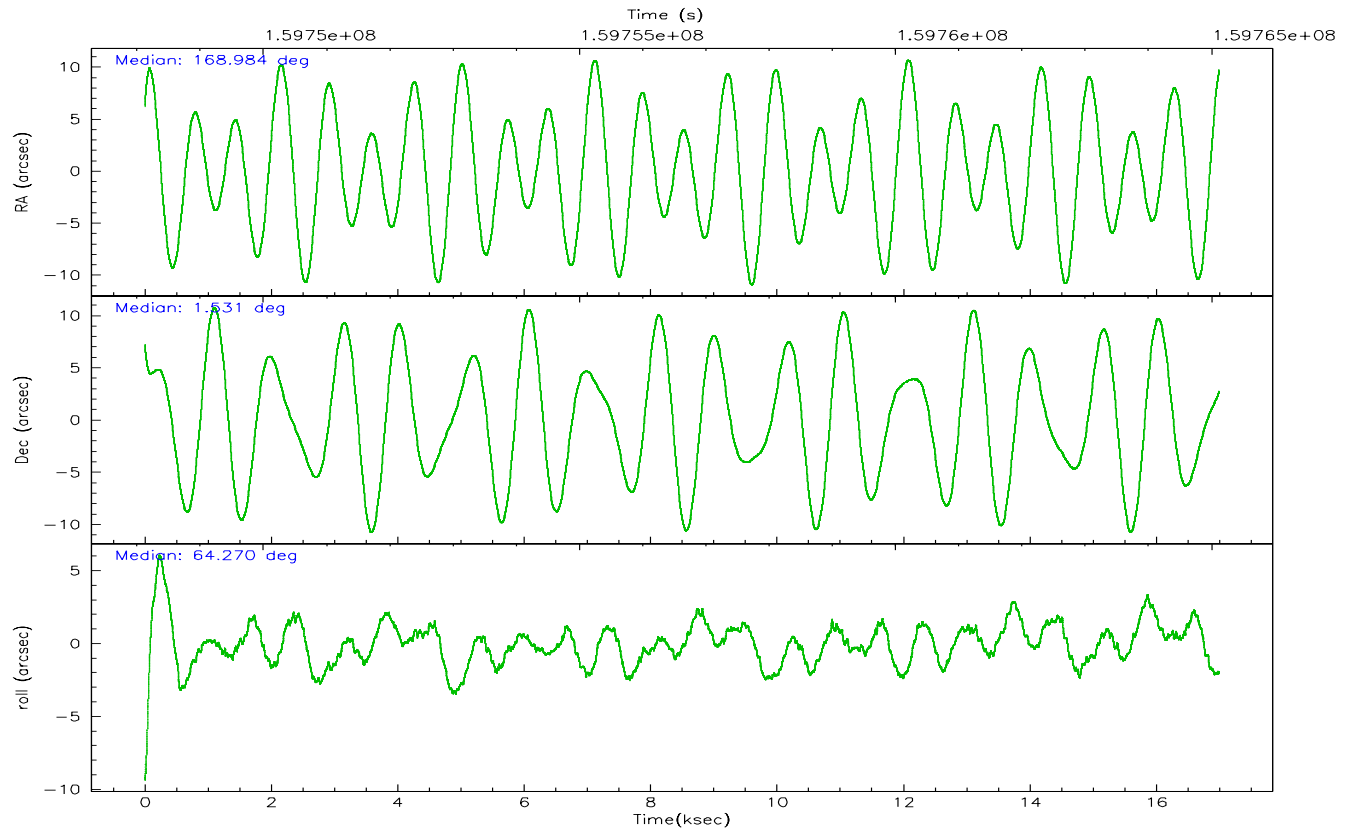
	ccd 0	ccd 1	ccd 2	ccd 3	ccd 6
grade 0 events	4073	5167	5260	12003	5014
	5%	6%	5%	12%	5%
grade 1 events	39	44	45	92	37
	0%	0%	0%	0%	0%
grade 2 events	2078	2303	2163	2778	1971
	2%	2%	2%	2%	2%
grade 3 events	1071	1141	1027	1248	1050
	1%	1%	1%	1%	1%
grade 4 events	1014	1193	951	1286	1033
	1%	1%	1%	1%	1%
grade 5 events	2839	2936	2688	3131	3210
	3%	3%	2%	3%	3%
grade 6 events	1671	1866	1563	1863	1920
	2%	2%	1%	1%	2%
grade 7 events	67002	64168	78206	71918	71235
	83%	81%	85%	76%	83%

2.2 Compared Parameters

Parameter	Planned	Actual	Parameter	Planned	Actual
Instrument	ACIS	ACIS	Obspar format version number	6	6
Detector	ACIS-01236	ACIS-01236	Obspar file type	PREDICTED	ACTUAL
Grating	NONE	NONE	Obspar update status	NONE	UPDATED
Data mode	VFAINT	VFAINT	On-chip summing requested	N	N
Observation mode	POINTING	POINTING	Subarray requested	NONE	NONE
Pointing RA	168.986466	168.9842993400795	Alternating exposures requested	N	N
Pointing Dec	1.504078	1.531366482801871	Primary exposure time	0.000000	3.1
Pointing Roll	64.071985	64.28072910088838			
SIM focus pos (mm)	-0.782348	-0.7809083437167272			
SIM defocus (mm)	0	0.001439871863259334			
SIM translation stage pos (mm)	-227.742463	-227.734108438797			
SIM translation stage offset (mm)	-5.85	-5.858344564132665			
Observation start time	159749123.184000	159747752.38767			
Observation start date	2003-01-23T22:44:19	2003-01-23T22:22:32			
Observation end time	159765123.184000	159765797.00092			
Observation end date	2003-01-24T03:10:59	2003-01-24T03:23:17			
Read mode	TIMED	TIMED			

2.3 Aspect



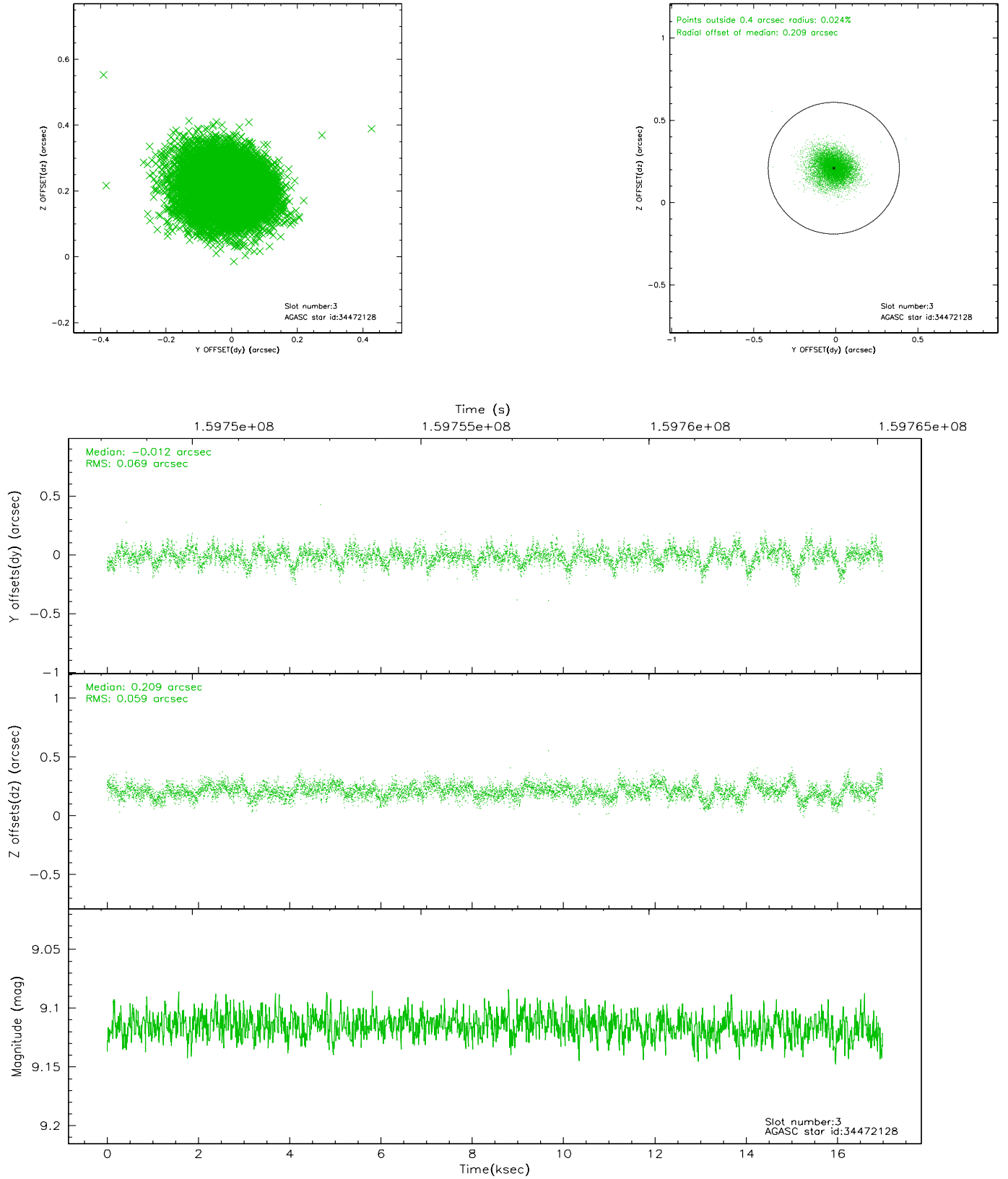


Slot Statistics

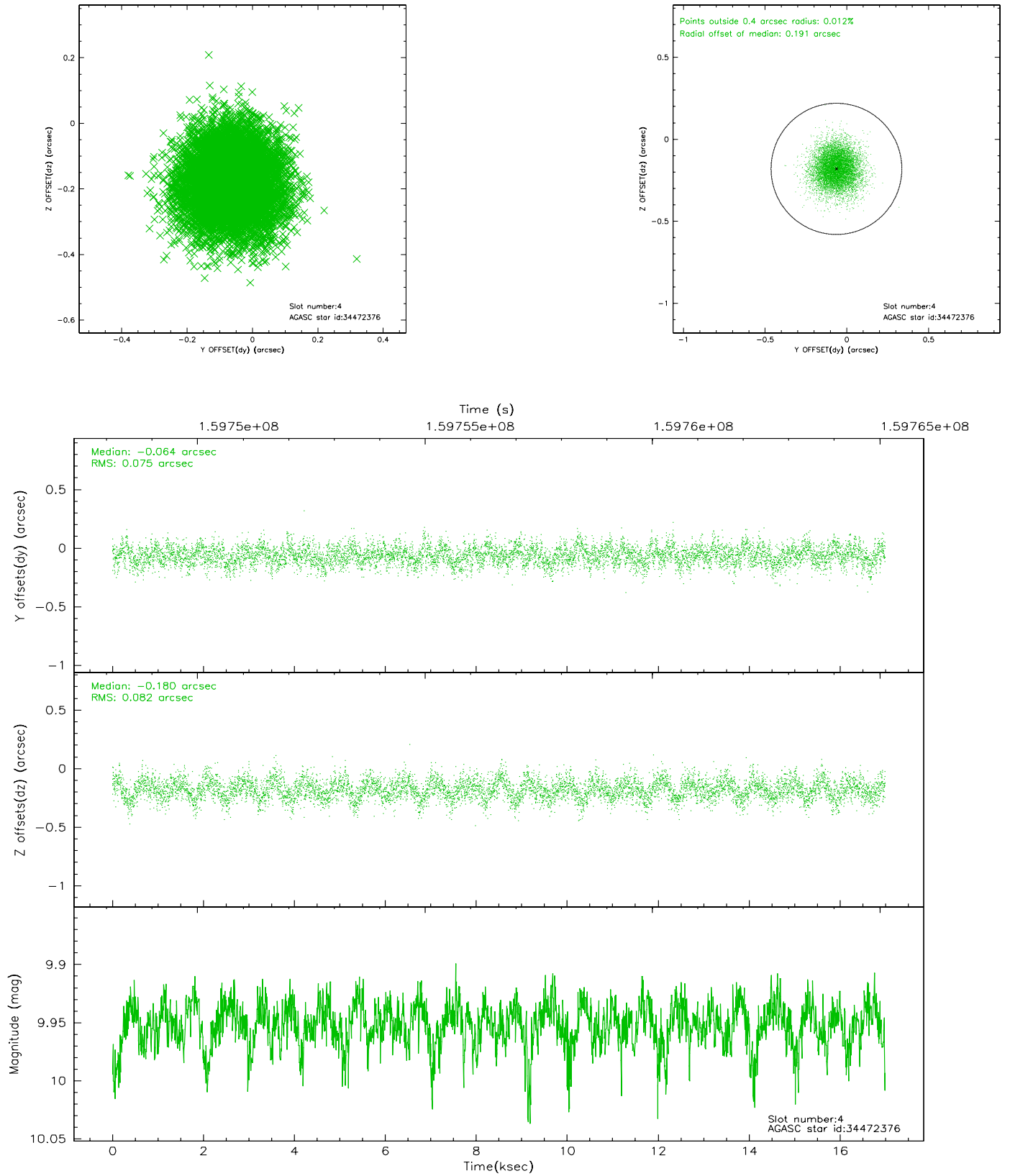
slot	status	id	mag	n_pts	med_dy	med_dz	dr1	dr2	ra	dec	mean_y	mean_z
0	FID	ACIS-I-1	7.24	4146	0.014	0.030	0.008	0.015	0.000000	0.000000	937.29	-951.33
1	FID	ACIS-I-5	7.24	4146	-0.108	0.055	0.009	0.015	0.000000	0.000000	-1810.79	946.03
2	FID	ACIS-I-6	7.25	4146	0.002	-0.015	0.007	0.012	0.000000	0.000000	402.57	1590.75
3	GUIDE	34472128	9.12	8290	-0.012	0.209	0.095	0.159	169.776116	1.701808	1883.83	-2243.60
4	GUIDE	34472376	9.95	8288	-0.064	-0.180	0.118	0.194	168.818822	2.185261	1941.99	1614.46
5	GUIDE	34473872	10.06	8285	0.185	0.142	0.259	0.385	169.002006	1.482619	-44.46	-83.76
6	GUIDE	34475736	9.36	8283	0.017	-0.062	0.110	0.167	168.975954	2.086690	1870.19	950.69
7	GUIDE	34476208	8.12	8291	-0.126	-0.114	0.086	0.133	168.824612	2.063437	1556.32	1404.15

2.4 Star Slots

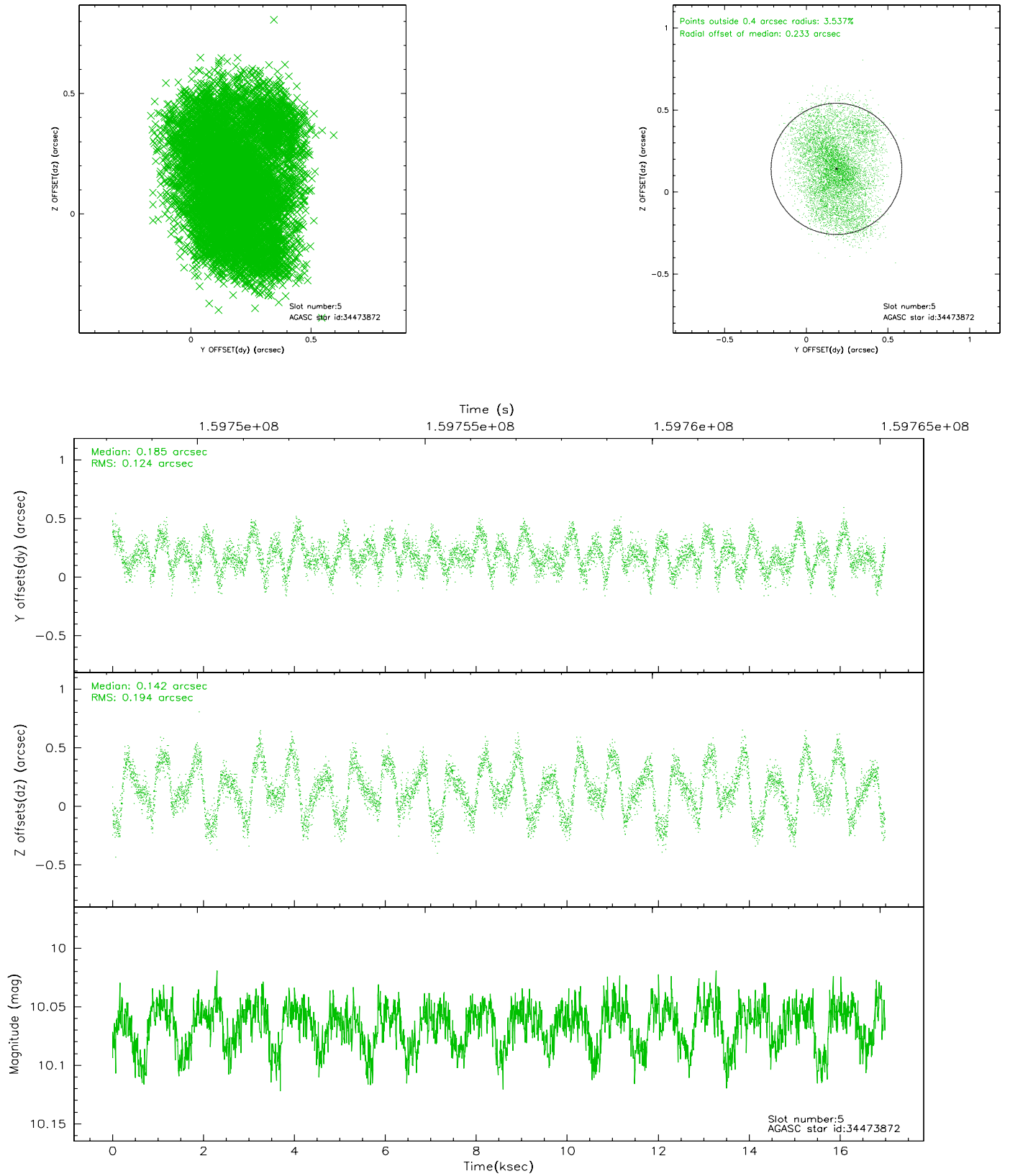
2.4.1 Slot 3



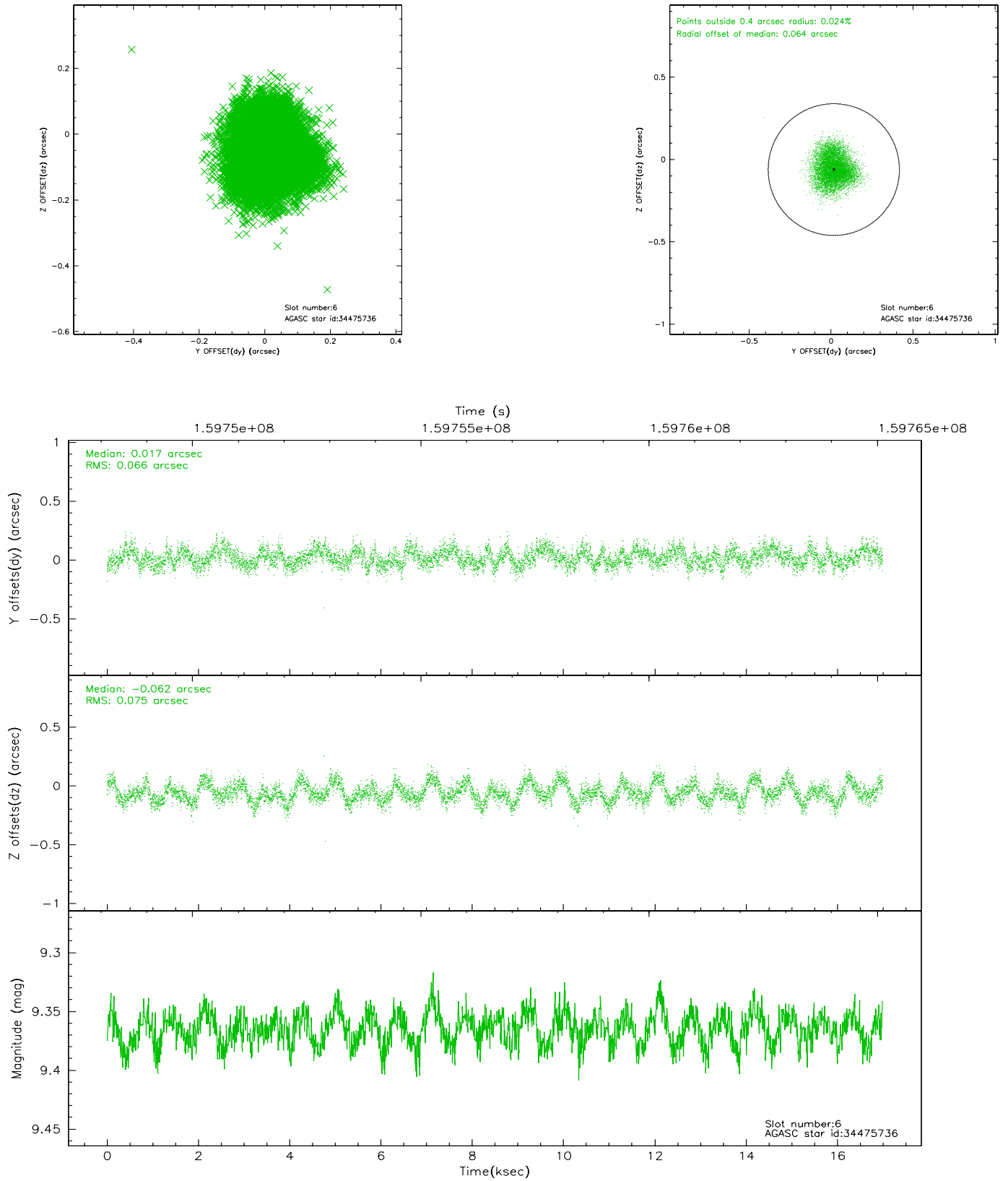
2.4.2 Slot 4



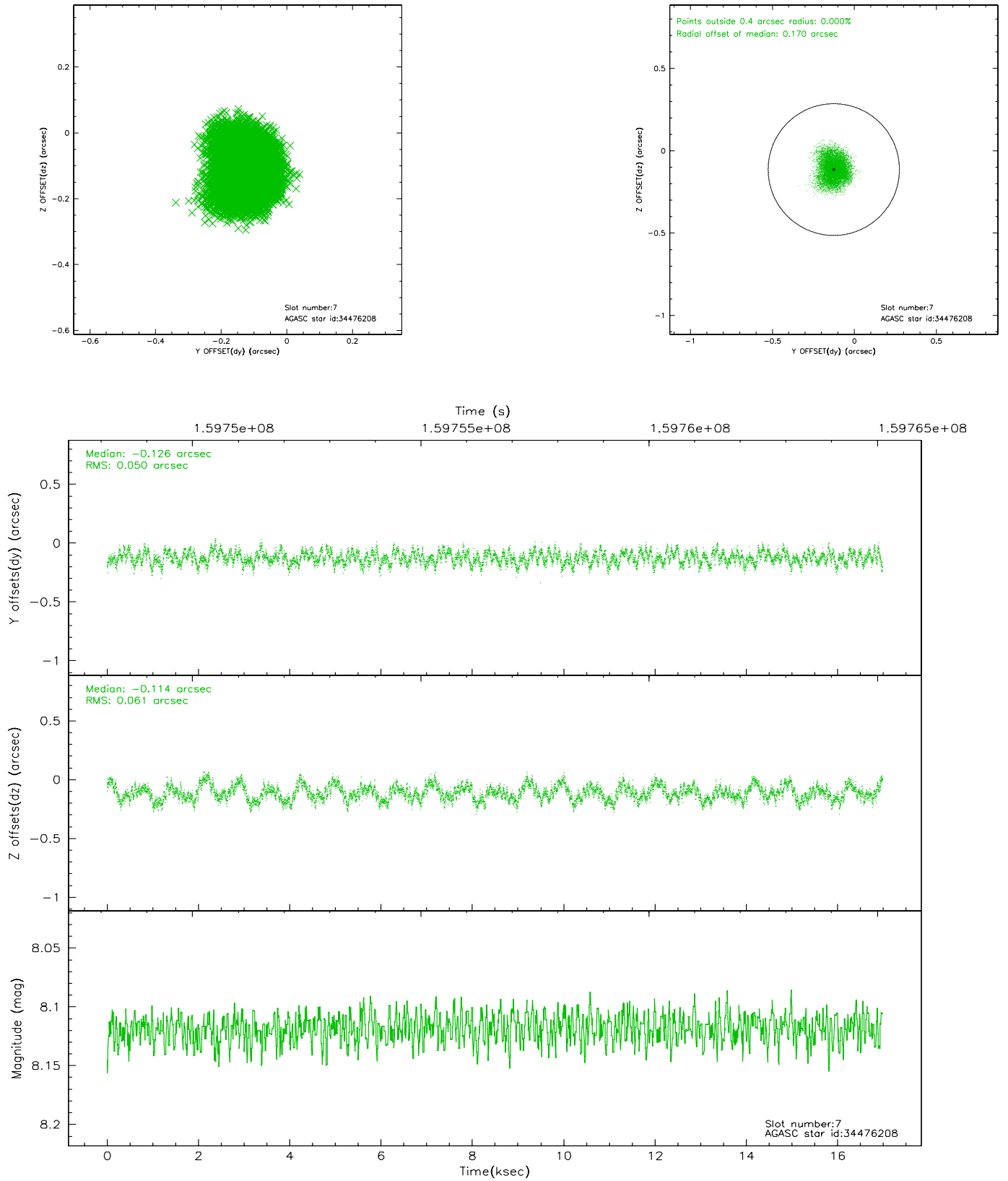
2.4.3 Slot 5



2.4.4 Slot 6

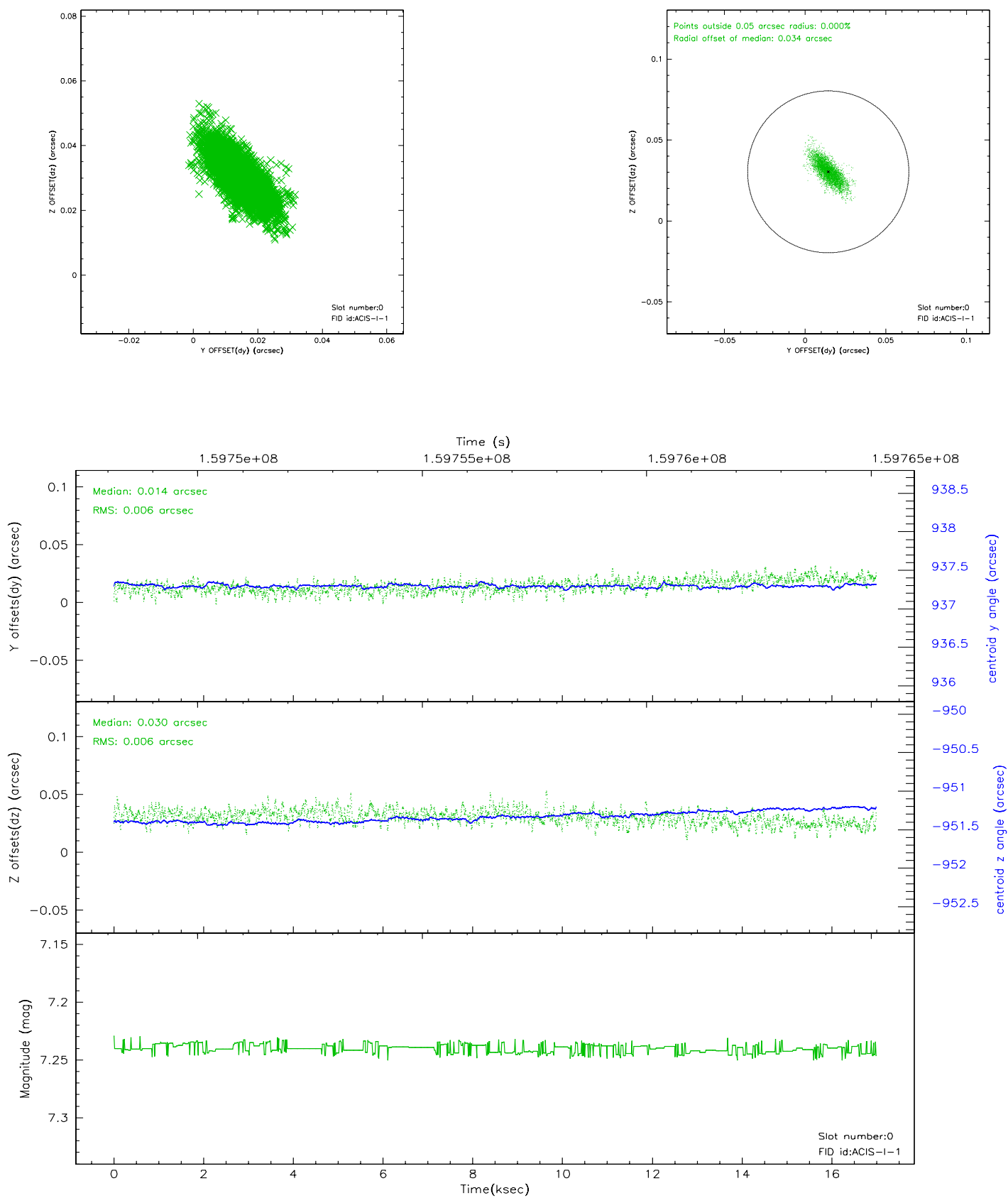


2.4.5 Slot 7

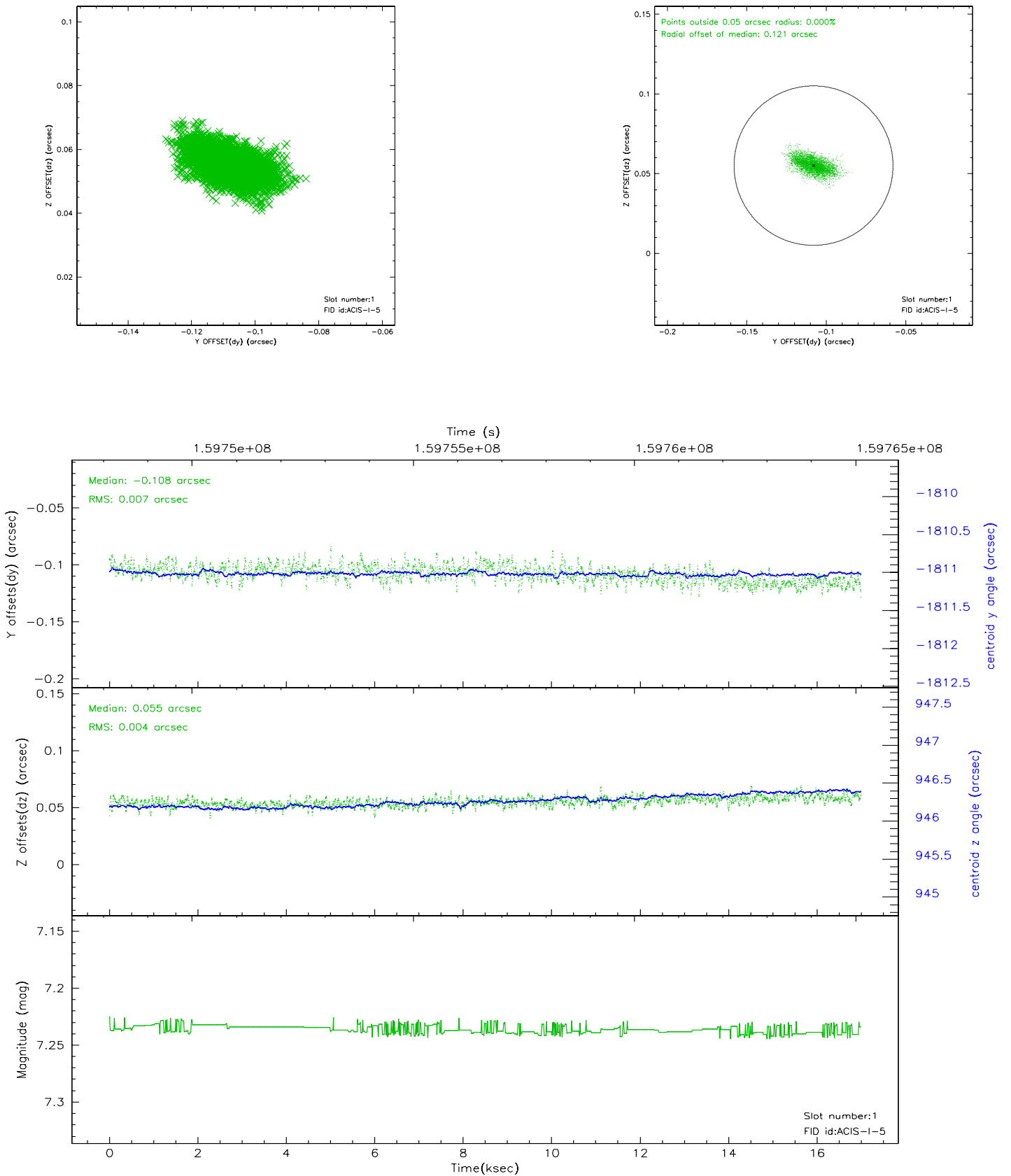


2.5 FID Slots

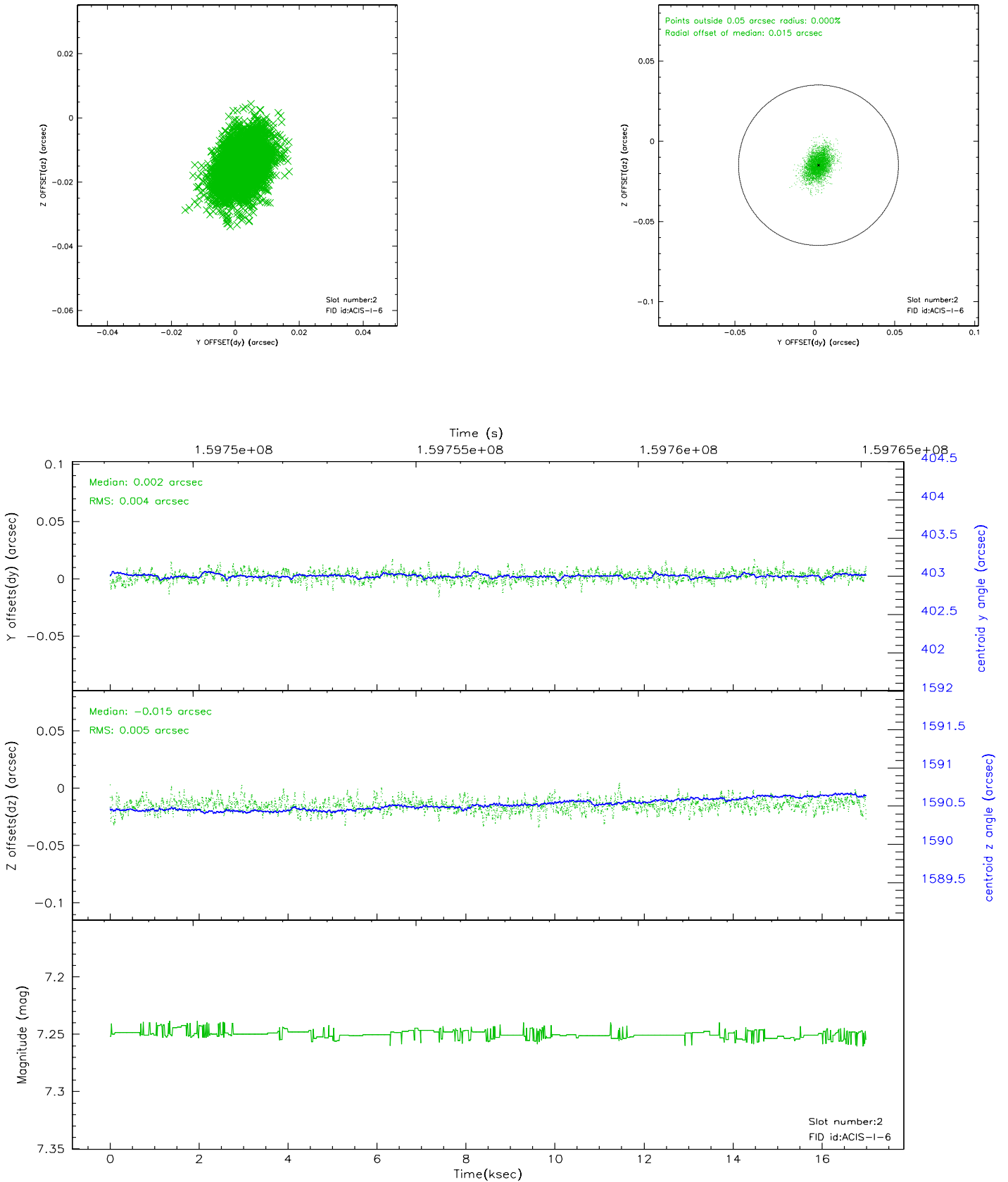
2.5.1 Slot 0



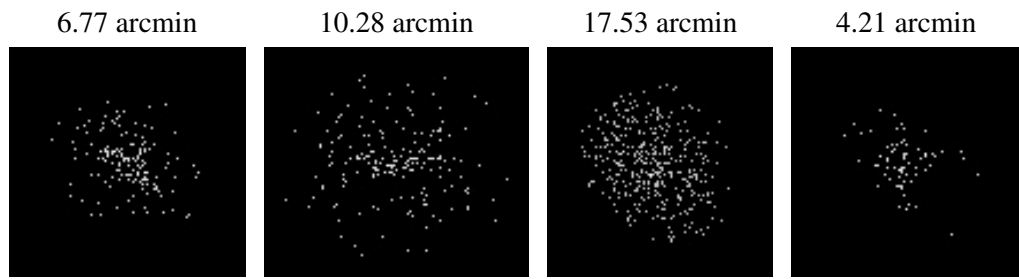
2.5.2 Slot 1



2.5.3 Slot 2



3 Point Sources



A Summary

A.1 Status

V&V Scientist	Joy Nichols
V&V Date (YYYY-MM-DD)	2006.07.19
V&V Edition	1
V&V Disposition and Status	OK
V&V Charge Time	16.113

A.2 Comments