

# V&V Reference Report

## L2 ASCDS Version : 8.4.5

Observation 3205 - L2 Version 5  
Chandra X-Ray Center

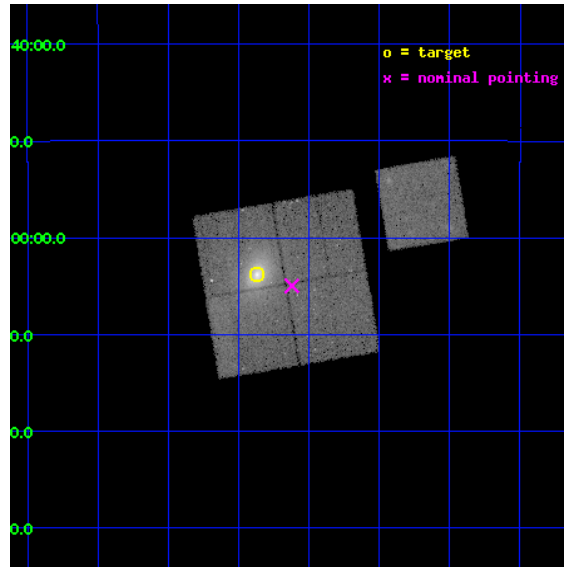
L2 Processing Date : Dec 11 2012

## Contents

<b>1</b>	<b>Front</b>	<b>2</b>
<b>2</b>	<b>OBI</b>	<b>3</b>
2.1	OBI . . . . .	3
2.1.1	Images . . . . .	3
2.1.2	Bias . . . . .	3
2.1.3	Parameters . . . . .	4
2.1.4	Events . . . . .	4
2.2	Compared Parameters . . . . .	5
2.3	Aspect . . . . .	6
2.4	Star Slots . . . . .	9
2.4.1	Slot 3 . . . . .	9
2.4.2	Slot 4 . . . . .	10
2.4.3	Slot 5 . . . . .	11
2.4.4	Slot 6 . . . . .	12
2.4.5	Slot 7 . . . . .	13
2.5	FID Slots . . . . .	14
2.5.1	Slot 0 . . . . .	14
2.5.2	Slot 1 . . . . .	15
<b>A</b>	<b>Summary</b>	<b>16</b>
A.1	Status . . . . .	16
A.2	Comments . . . . .	16

# 1 Front

seq_num	800205	Sequence number
obs_id	3205	Observation id
title	DETAILED STUDY OF CLUSTER A907	Proposal title
observer	DR. LEON VANSPEYBROECK	Principal investigator
object	A907	Source name
dtcycle	0	&#160
cycle	P	events from which exps? Prim/Second/Both
ra_targ	149.592083	Observer's specified target RA [deg]
dec_targ	-11.063889	Observer's specified target Dec [deg]
ra_nom	149.53028506888	Nominal RA [deg]
dec_nom	-11.082912851133	Nominal Dec [deg]
roll_nom	80.421995085023	Nominal Roll [deg]
revision	5	Processing version of data
ontime	47733.717977703	Sum of GTIs [s]
livetime	47110.041811272	Livetime [s]
ontime0	47733.717977703	Sum of GTIs [s]
ontime1	47730.577007532	Sum of GTIs [s]
ontime2	47736.858937979	Sum of GTIs [s]
ontime3	47727.43605721	Sum of GTIs [s]
ontime6	47739.999908179	Sum of GTIs [s]
l2events	171000	Number of level 2 events

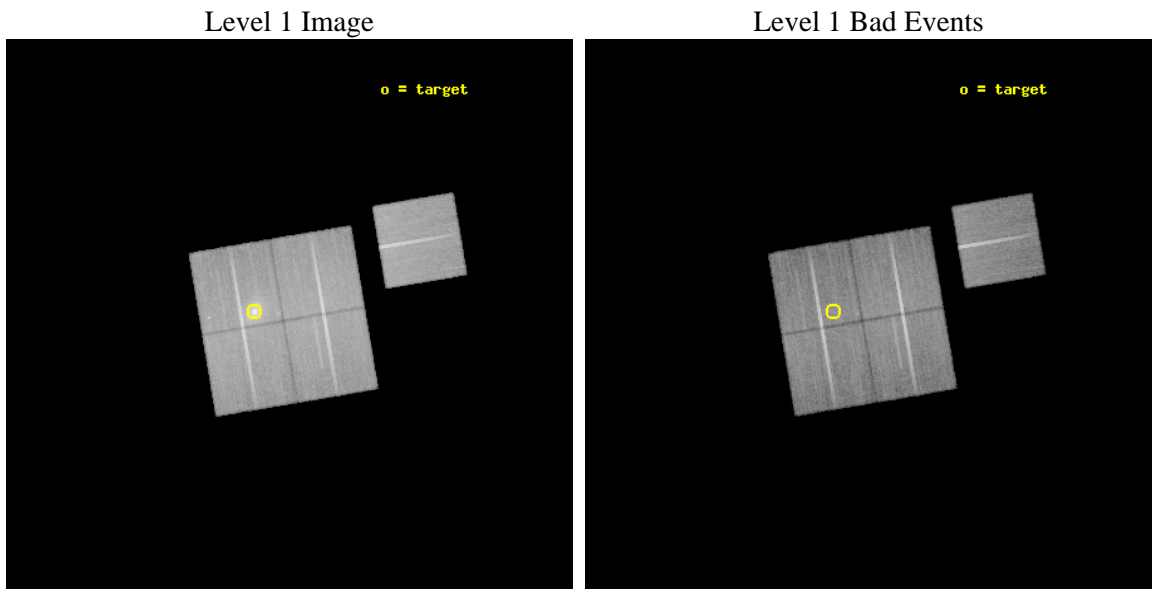




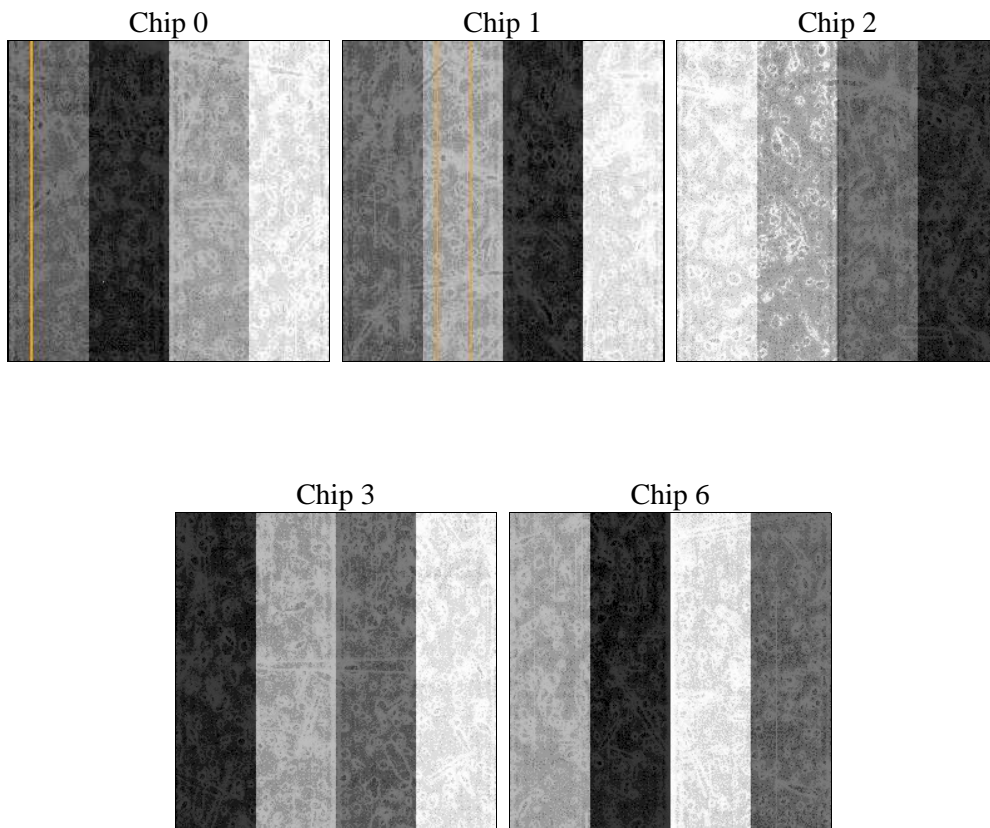
## 2 OBI

### 2.1 OBI

#### 2.1.1 Images



#### 2.1.2 Bias



### 2.1.3 Parameters

obi_num	1	Obi number	sched_exp_time	47581.177000	[s] Scheduled observation exposure time
ascdsver	8.5	Processing system revision	ontime	47733.717977703	Sum of GTIs [s]
caldsver	4.5.4	&#160	ontime0	47733.717977703	Sum of GTIs [s]
date	2012-12-11T19:08:48	Date and time of file creation	ontime1	47730.577007532	Sum of GTIs [s]
revision	5	Processing version of data	ontime2	47736.858937979	Sum of GTIs [s]
			ontime3	47727.43605721	Sum of GTIs [s]
			ontime6	47739.999908179	Sum of GTIs [s]
			l1events	1334774	Number of level 1 events

### 2.1.4 Events

	ccd 0	ccd 1	ccd 2	ccd 3	ccd 6		ccd 0	ccd 1	ccd 2	ccd 3	ccd 6
level 1 events	289194	255432	271462	257259	261427	grade 0 events	51069	16296	11862	10612	12800
rejected events	212667	220113	243348	230955	231208		17%	6%	4%	4%	4%
rejected %	73%	86%	89%	89%	88%	grade 1 events	342	151	126	120	112
							0%	0%	0%	0%	0%
						grade 2 events	10736	6524	5939	5243	5869
							3%	2%	2%	2%	2%
						grade 3 events	4554	3435	2806	2870	3143
							1%	1%	1%	1%	1%
						grade 4 events	4351	3457	2857	2758	3057
							1%	1%	1%	1%	1%
						grade 5 events	8738	9245	8196	9608	9586
							3%	3%	3%	3%	3%
						grade 6 events	6094	5718	4742	4919	5481
							2%	2%	1%	1%	2%
						grade 7 events	203310	210606	234934	221129	221379
							70%	82%	86%	85%	84%

## 2.2 Compared Parameters

Parameter	Planned	Actual	Parameter	Planned	Actual
Instrument	ACIS	ACIS	Obspar format version number	7	7
Detector	ACIS-01236	ACIS-01236	Obspar file type	PREDICTED	ACTUAL
Grating	NONE	NONE	Obspar update status	NONE	UPDATED
Data mode	VFAINT	VFAINT	Number of optional ACIS chips dropped	0	0
Observation mode	POINTING	POINTING	On-chip summing requested	N	N
[deg] Pointing RA	149.540122	149.5302850688846	Subarray requested	NONE	NONE
[deg] Pointing Dec	-11.108550	-11.0829128511329	Alternating exposures requested	N	N
[deg] Pointing Roll	80.215204	80.42199508502293	[s] Primary exposure time	0.000000	3.1
[mm] SIM focus pos	-0.782348	-0.7809083437167272			
[mm] SIM defocus	0	0.001439871863259334			
[mm] SIM translation stage pos	-233.592463	-233.5874344608287			
[mm] SIM translation stage offset	0	-0.005018542100998502			
[s] Observation start time (MET)	152327020.184000	152325946.94055			
Observation start date	2002-10-30T01:02:36	2002-10-30T00:45:46			
[s] Observation end time (MET)	152374601.184000	152374915.80509			
Observation end date	2002-10-30T14:15:37	2002-10-30T14:21:55			
Read mode	TIMED	TIMED			

## 2.3 Aspect

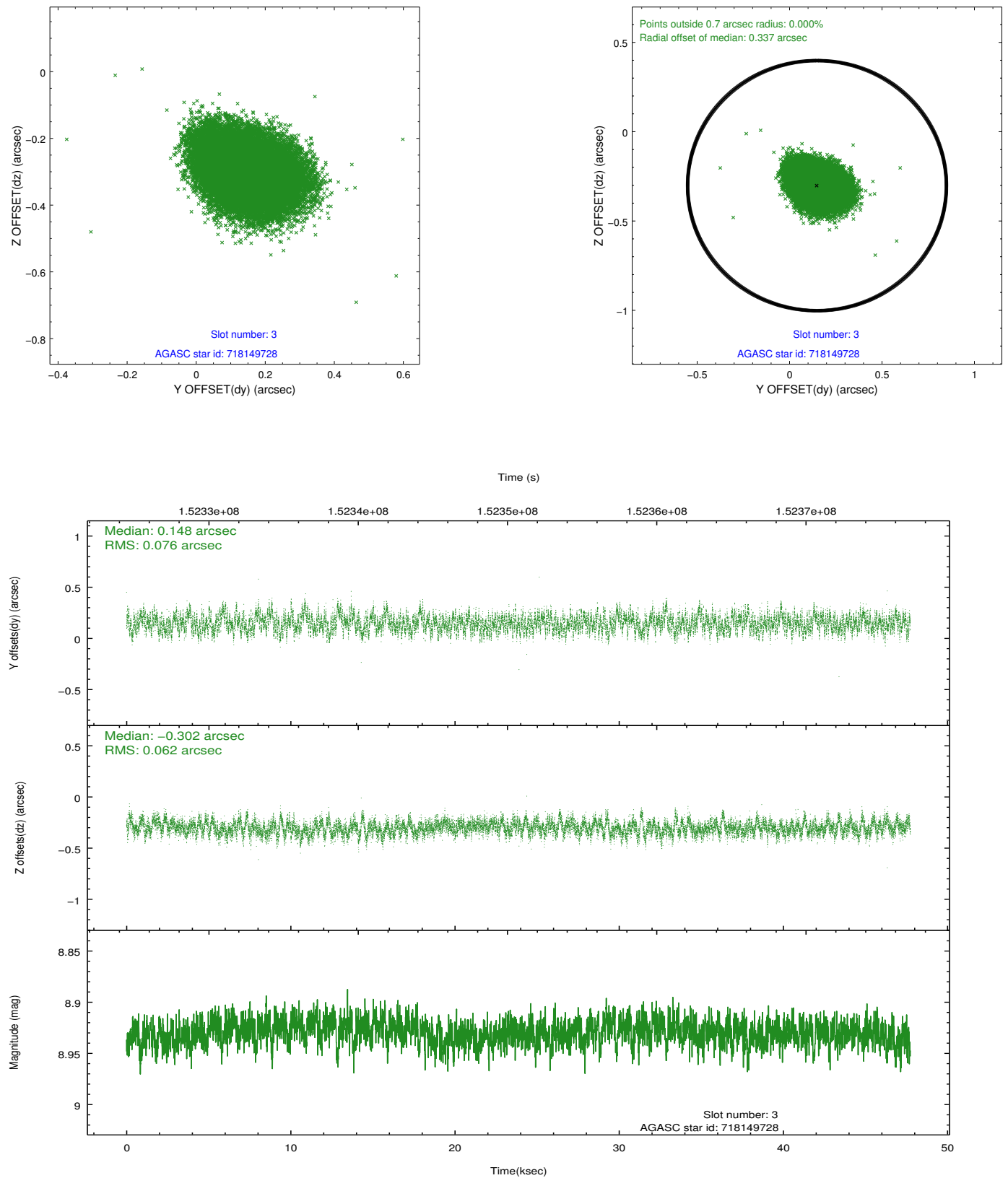


### Slot Statistics

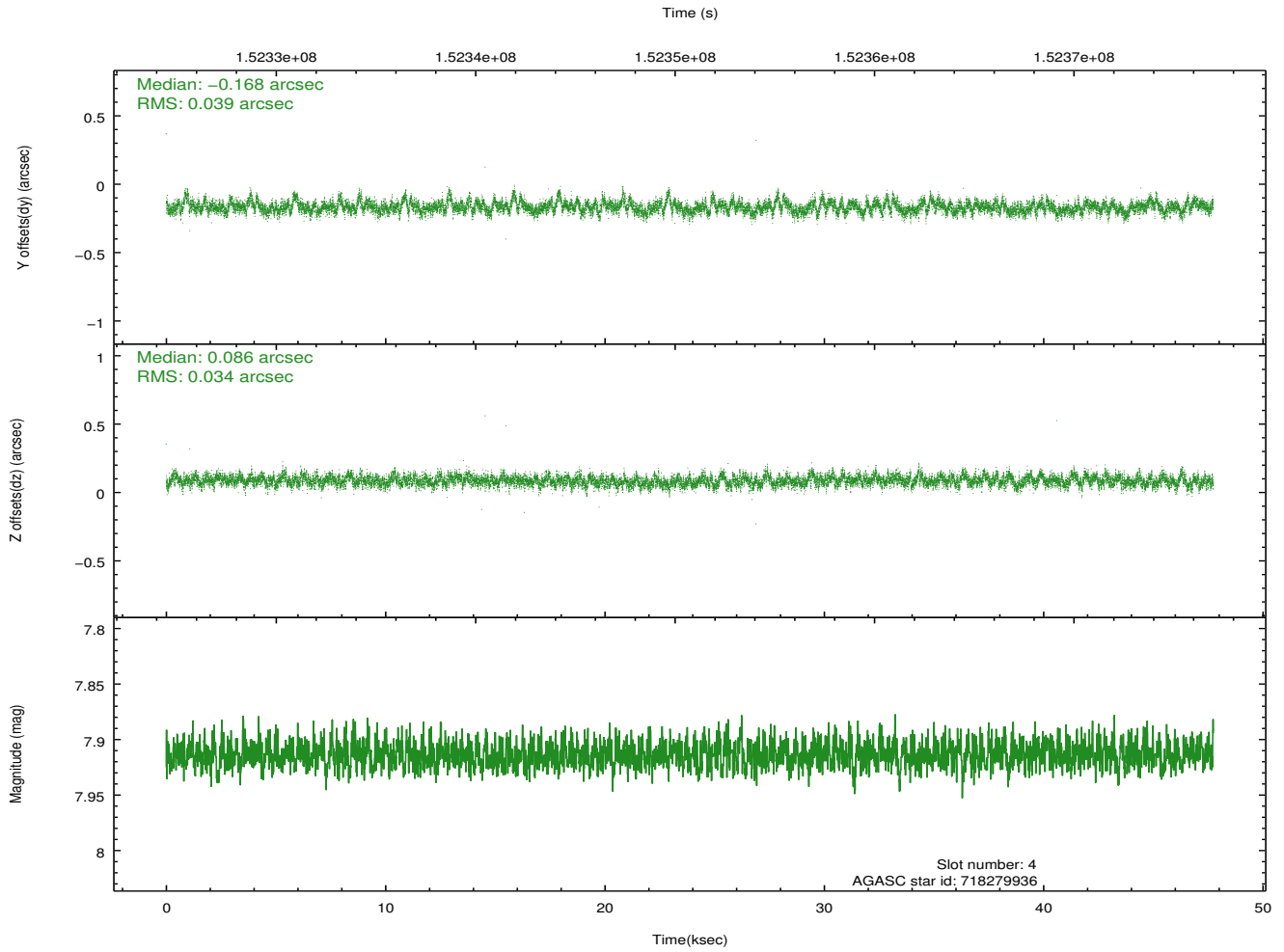
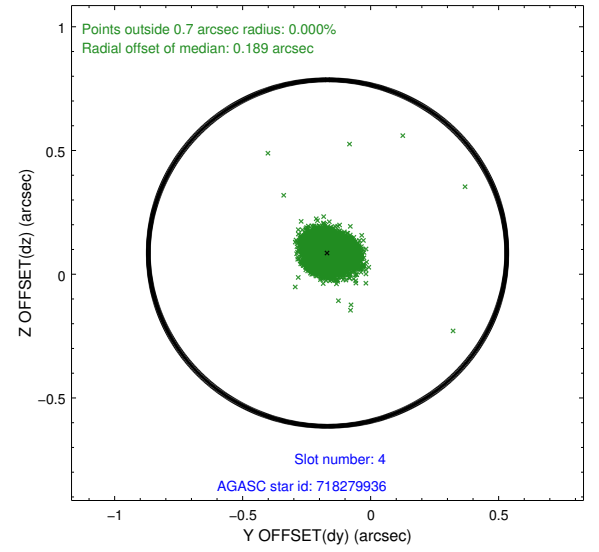
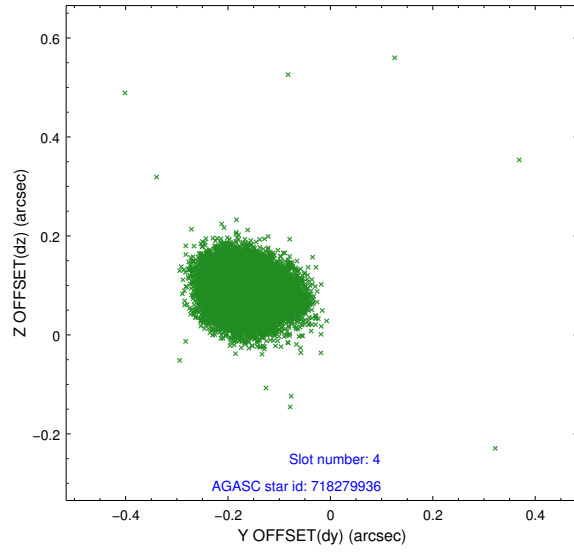
slot	status	id	mag	n_pts	med_dy	med_dz	dr1	dr2	ra	dec	mean_y	mean_z
0	FID	ACIS-I-1	7.24	11642	-0.036	0.029	0.009	0.020	0.000000	0.000000	937.07	-832.16
1	FID	ACIS-I-5	7.24	11644	-0.025	0.021	0.009	0.020	0.000000	0.000000	-1811.06	1065.28
2	OMITTED		0.00	0	0.000	0.000	0.000	0.000	0.000000	0.000000	0.00	0.00
3	GUIDE	718149728	8.93	23271	0.148	-0.302	0.105	0.167	148.975070	-11.248777	-838.95	1880.37
4	GUIDE	718279936	7.91	23286	-0.168	0.086	0.054	0.089	149.904611	-10.701814	1660.82	-1020.75
5	GUIDE	718281768	10.05	23158	-0.168	0.202	0.161	0.261	150.129572	-11.020734	663.24	-1998.23
6	GUIDE	718800120	10.14	23201	0.287	-0.173	0.137	0.246	149.381456	-11.604958	-1856.50	247.86
7	GUIDE	718283520	9.96	23255	-0.106	0.188	0.130	0.213	150.184567	-10.907017	1099.38	-2120.97

## 2.4 Star Slots

### 2.4.1 Slot 3

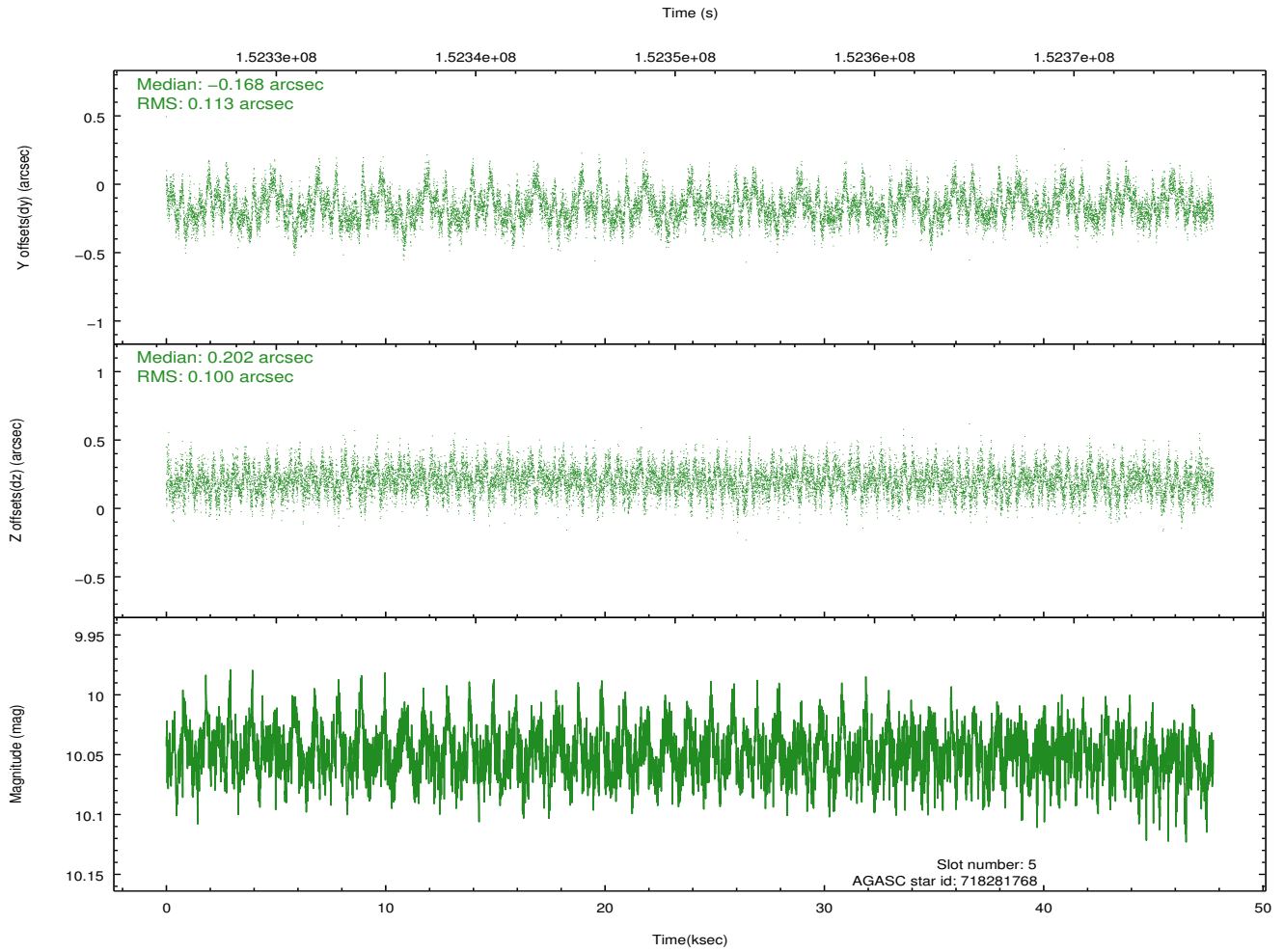
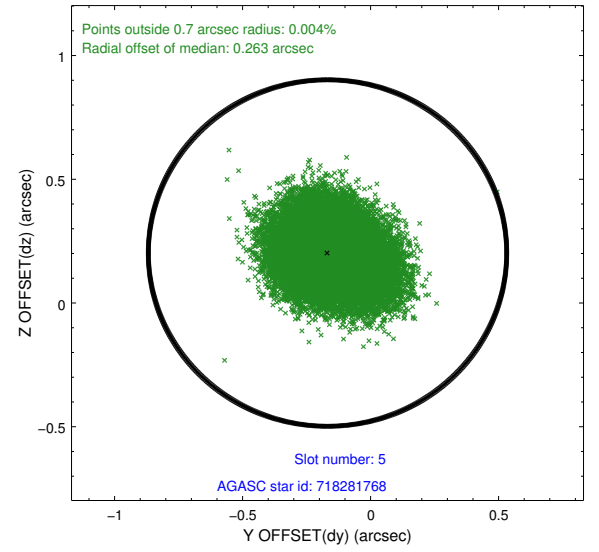
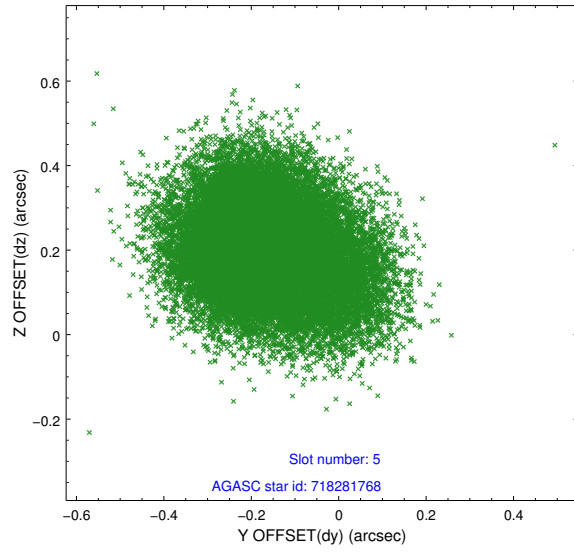


## 2.4.2 Slot 4

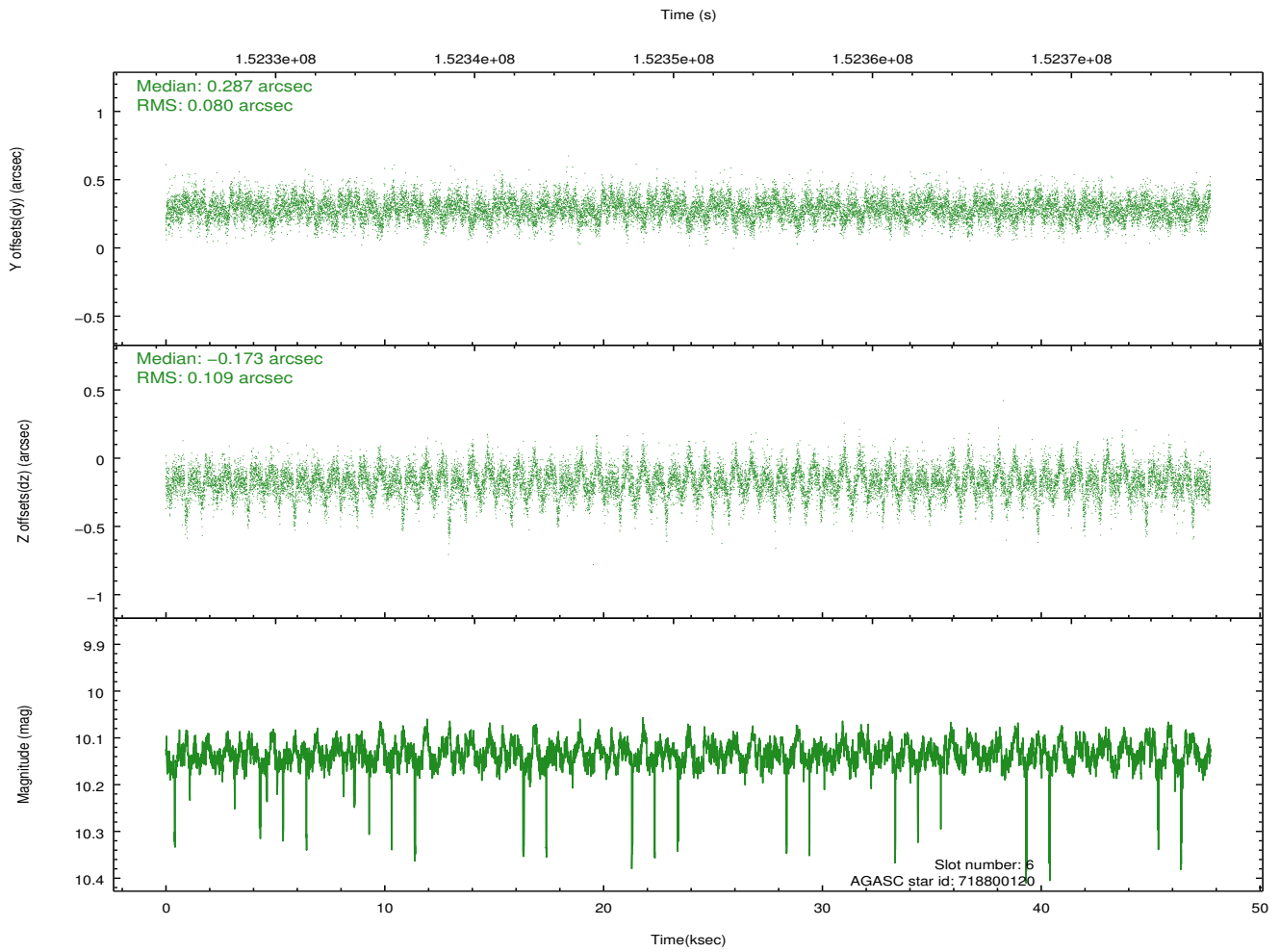
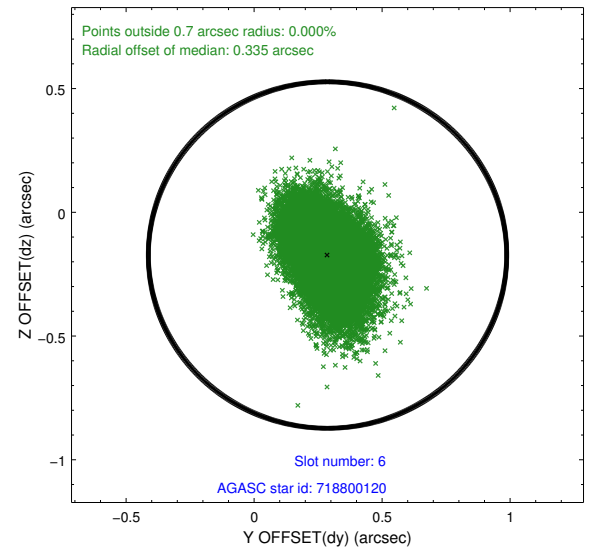
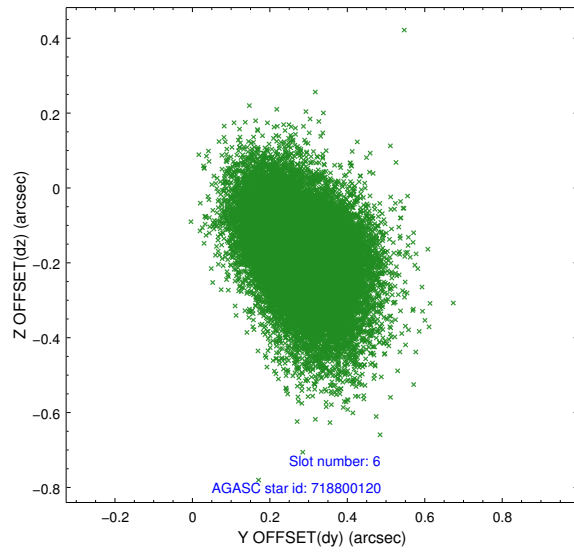




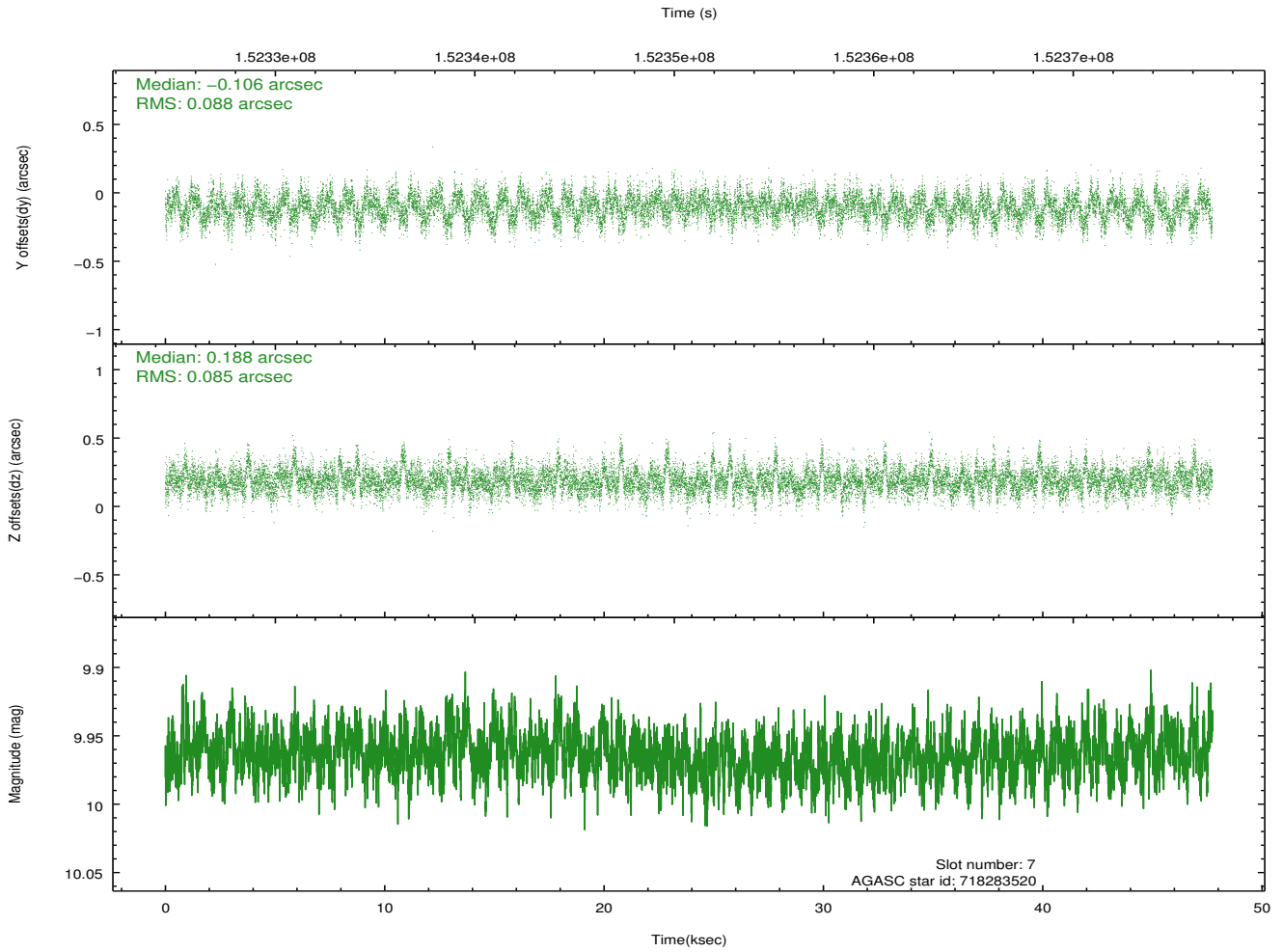
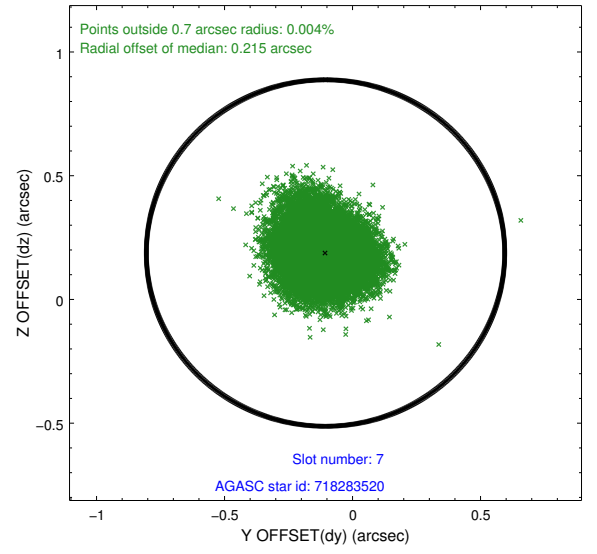
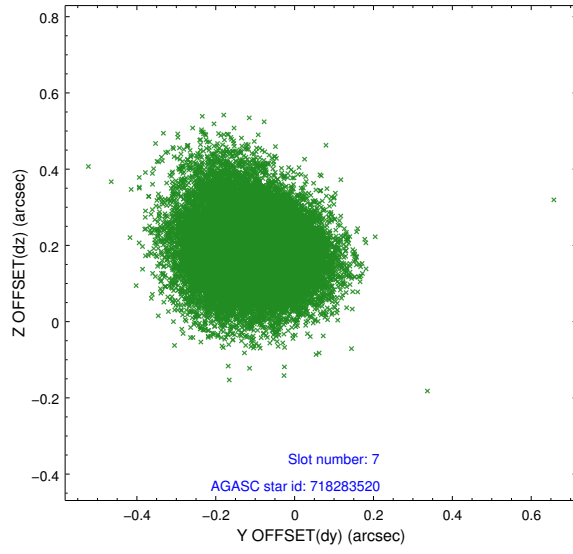
### 2.4.3 Slot 5



## 2.4.4 Slot 6

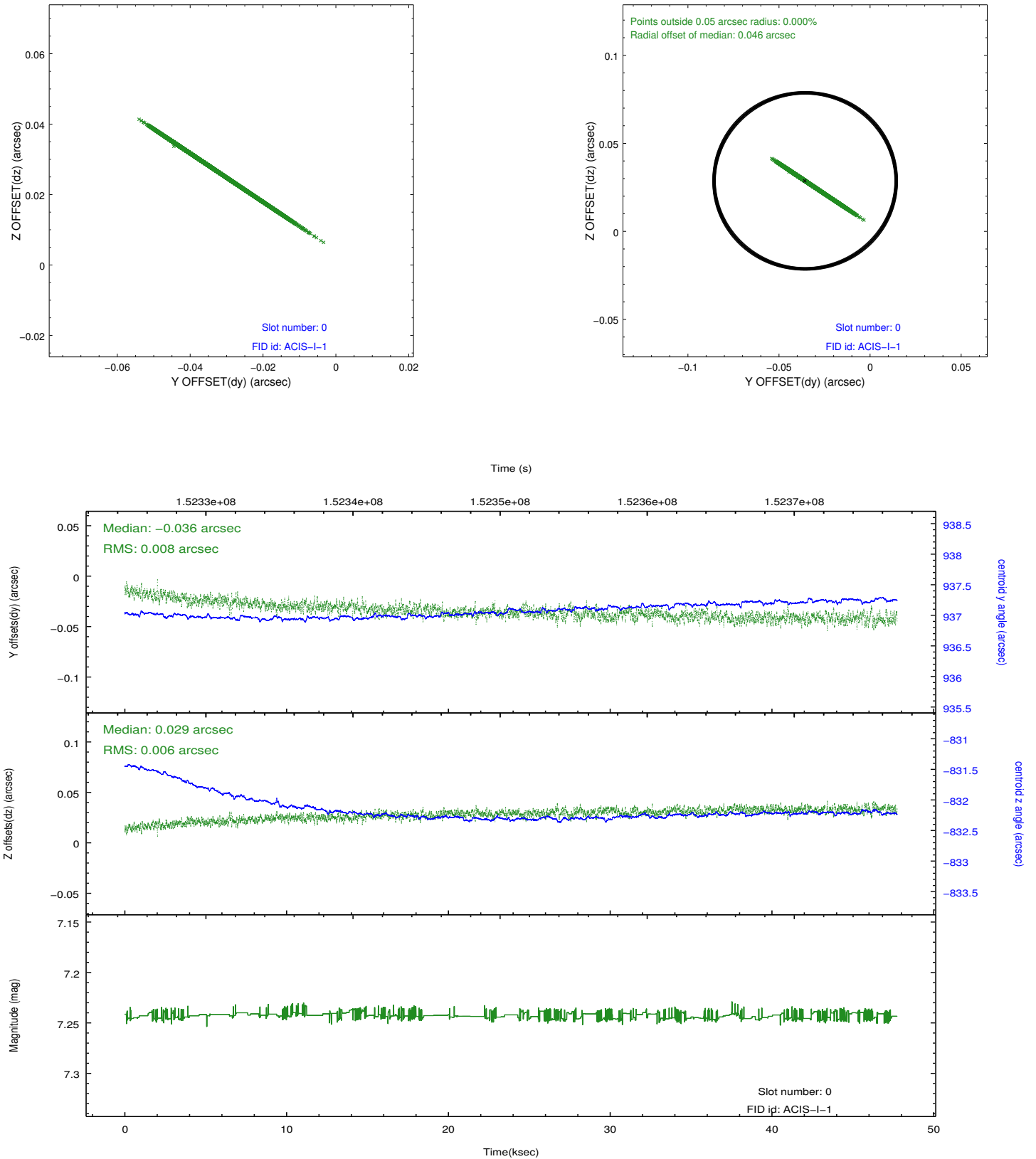


## 2.4.5 Slot 7

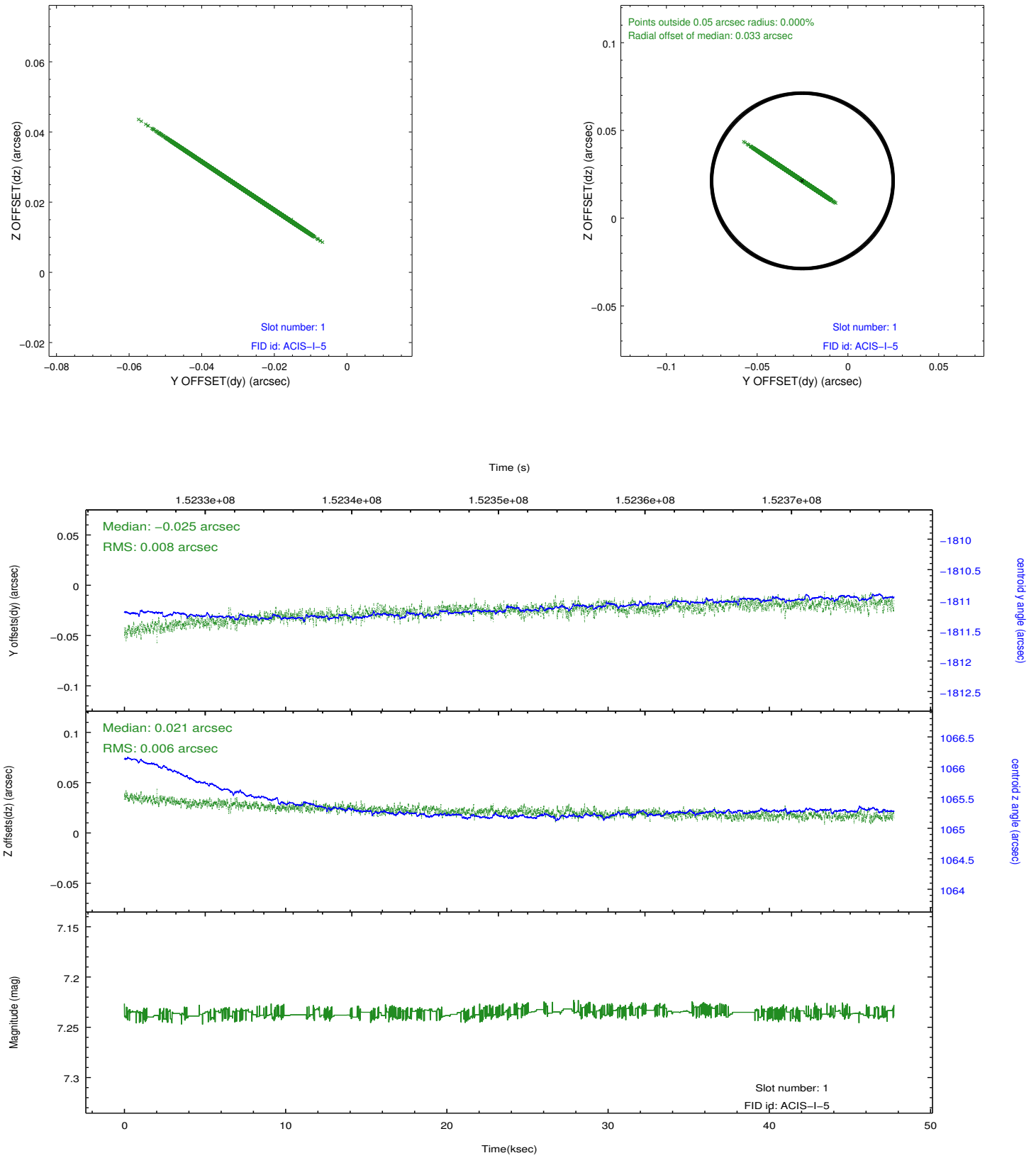


## 2.5 FID Slots

### 2.5.1 Slot 0



## 2.5.2 Slot 1



## A Summary

### A.1 Status

V&V Scientist	Beth Sundheim
V&V Date (YYYY-MM-DD)	2013.01.02
V&V Edition	1
V&V Disposition and Status	OK
V&V Charge Time	47.733

### A.2 Comments

The fid light in slot 2 was removed from the aspect solution due to poor data quality. The aspect solution is improved by the removal of this fid light from the solution.