

V&V Reference Report

L2 ASCDS Version : 7.6.10

Observation 3195 - L2 Version 001
Chandra X-Ray Center

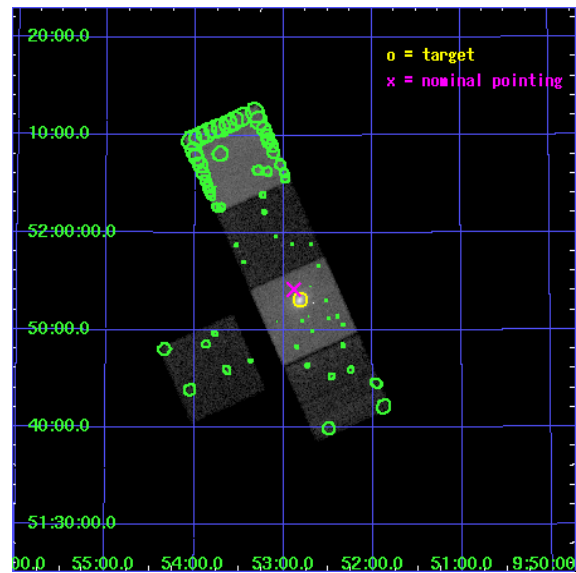
L2 Processing Date : Jan 13 2007

Contents

1	Front	2
2	OBI	3
2.1	OBI	3
2.1.1	Images	3
2.1.2	Bias	3
2.1.3	Parameters	4
2.1.4	Events	4
2.2	Compared Parameters	5
2.3	Aspect	6
2.4	Star Slots	9
2.4.1	Slot 3	9
2.4.2	Slot 4	10
2.4.3	Slot 5	11
2.4.4	Slot 6	12
2.4.5	Slot 7	13
2.5	FID Slots	14
2.5.1	Slot 0	14
2.5.2	Slot 1	15
2.5.3	Slot 2	16
3	Point Sources	17
A	Summary	18
A.1	Status	18
A.2	Comments	18

1 Front

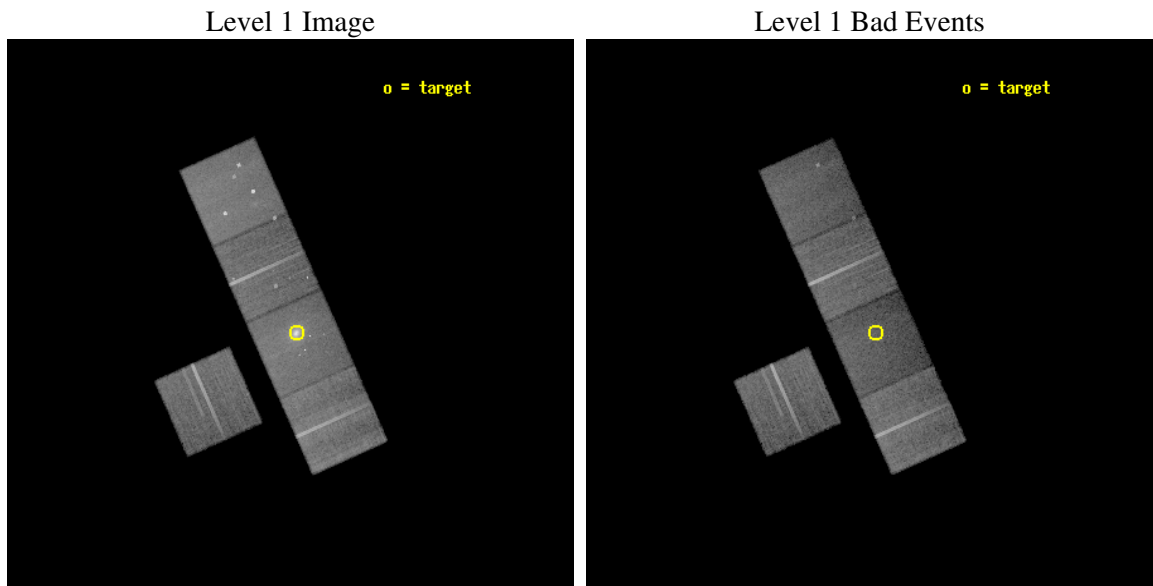
seq_num	800195
obs_id	3195
title	CHANDRA AND HST OBSERVATIONS OF THE BRIGHTEST, RELAXED CLUSTER LENSES
observer	Dr Steven Allen
object	ZWICKY 2701
dtcycle	0
cycle	P
ra_targ	148.205
dec_targ	51.885
ra_nom	148.22126833458
dec_nom	51.903224683447
roll_nom	65.989635522595
revision	2
ontime	27270.699947566
livetime	26914.388176354
ontime3	27270.699947566
ontime5	27270.699947566
ontime6	27270.699947566
ontime7	27270.699947566
ontime8	27254.995056584
l2events	233147



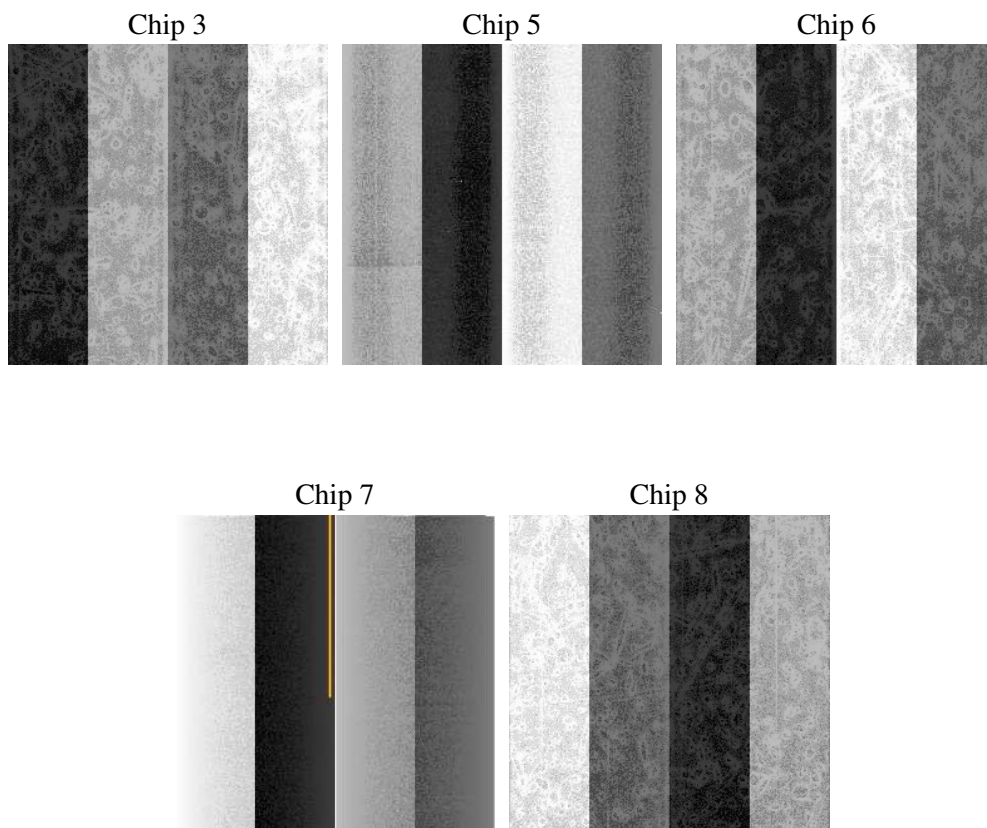
2 OBI

2.1 OBI

2.1.1 Images



2.1.2 Bias



2.1.3 Parameters

obi_num	0
ascdsver	7.6.10
caldsver	3.3.0
date	2007-01-13T15:45:03
revision	2

sched_exp_time	27500.000000
ontime	27270.699947566
ontime3	27270.699947566
ontime5	27270.699947566
ontime6	27270.699947566
ontime7	27270.699947566
ontime8	27254.995056584
l1events	876964

2.1.4 Events

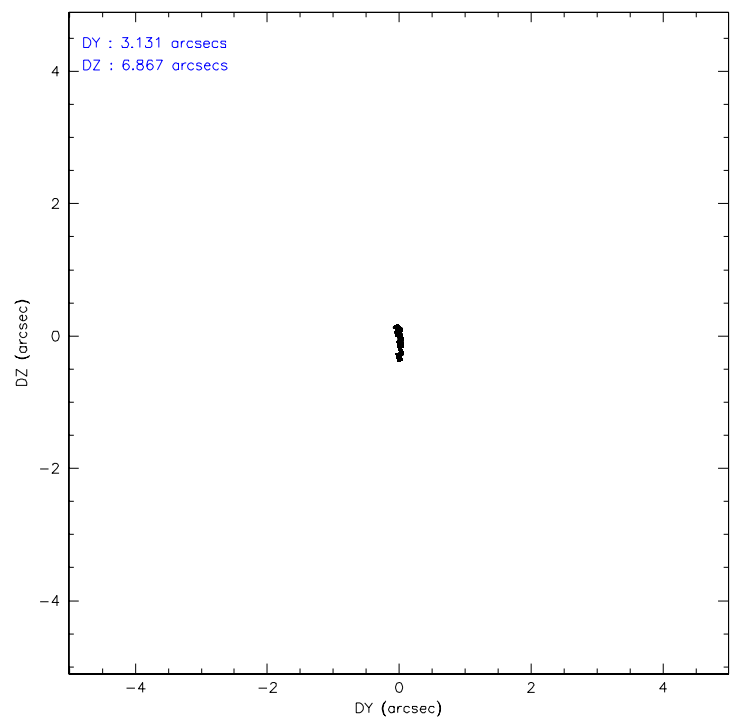
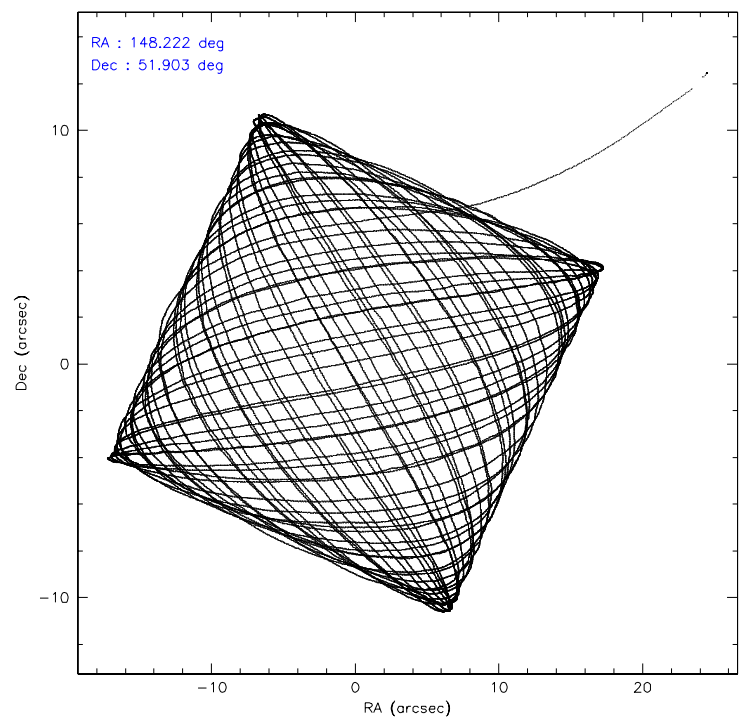
	ccd 3	ccd 5	ccd 6	ccd 7	ccd 8
level 1 events	146043	198735	154761	188487	188938
rejected events	132607	96819	137193	85266	147845
rejected %	90%	48%	88%	45%	78%

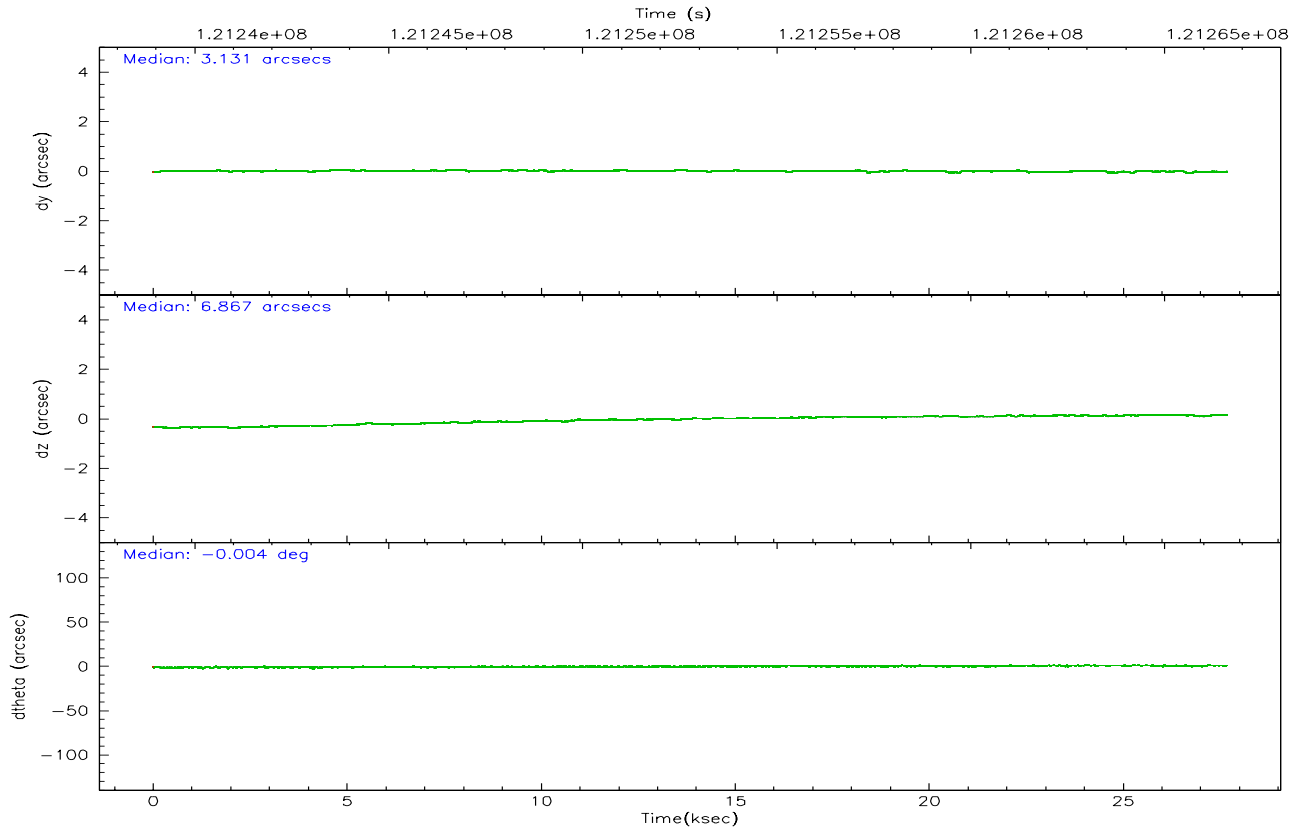
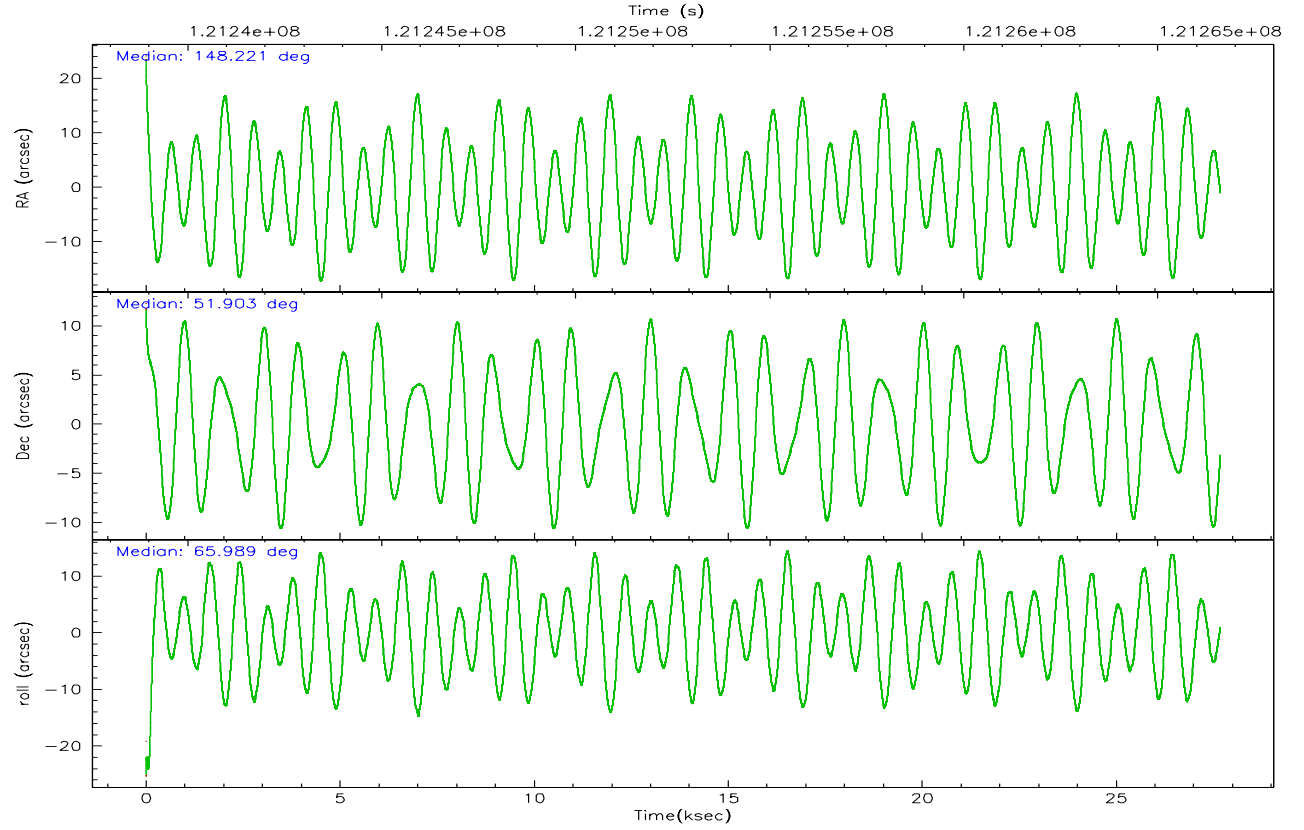
	ccd 3	ccd 5	ccd 6	ccd 7	ccd 8
grade 0 events	4777	16007	7716	17508	12671
	3%	8%	4%	9%	6%
grade 1 events	63	259	90	173	116
	0%	0%	0%	0%	0%
grade 2 events	2811	27656	3280	22373	8614
	1%	13%	2%	11%	4%
grade 3 events	1611	4663	1724	10320	4829
	1%	2%	1%	5%	2%
grade 4 events	1519	4504	1716	10499	4322
	1%	2%	1%	5%	2%
grade 5 events	5123	16009	5618	16755	7495
	3%	8%	3%	8%	3%
grade 6 events	2721	49103	3137	42546	10659
	1%	24%	2%	22%	5%
grade 7 events	127418	80534	131480	68313	140232
	87%	40%	84%	36%	74%

2.2 Compared Parameters

Parameter	Planned	Actual	Parameter	Planned	Actual
Instrument	ACIS	ACIS	Obspar format version number	6	6
Detector	ACIS-35678	ACIS-35678	Obspar file type	PREDICTED	ACTUAL
Grating	NONE	NONE	Obspar update status	NONE	UPDATED
Data mode	VFAINT	VFAINT	Number of optional ACIS chips dropped	0	0
Observation mode	POINTING	POINTING	On-chip summing requested	N	N
Pointing RA	148.226388	148.2212683345829	Subarray requested	NONE	NONE
Pointing Dec	51.876146	51.90322468344683	Alternating exposures requested	N	N
Pointing Roll	65.828978	65.98963552259538	Primary exposure time	0.000000	3.1
SIM focus pos (mm)	-0.684267	-0.6828225247311905			
SIM defocus (mm)	0	0.001444936568705701			
SIM translation stage pos (mm)	-190.132523	-190.1425803651734			
SIM translation stage offset (mm)	0	0.01005778216563158			
Observation start time	121239107.184000	121238368.07459			
Observation start date	2001-11-04T05:30:43	2001-11-04T05:19:28			
Observation end time	121266607.184000	121267598.00075			
Observation end date	2001-11-04T13:09:03	2001-11-04T13:26:38			
Read mode	TIMED	TIMED			

2.3 Aspect



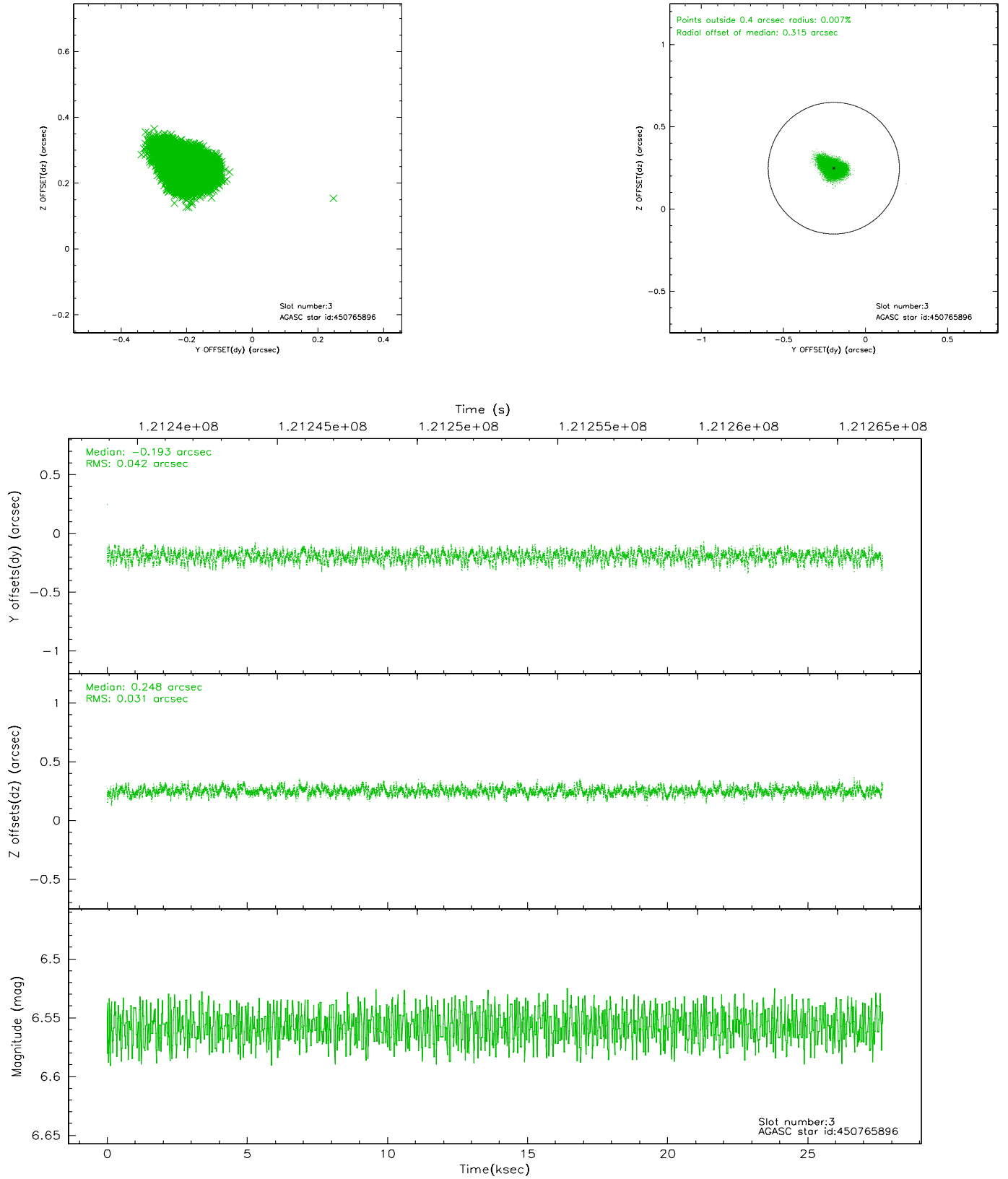


Slot Statistics

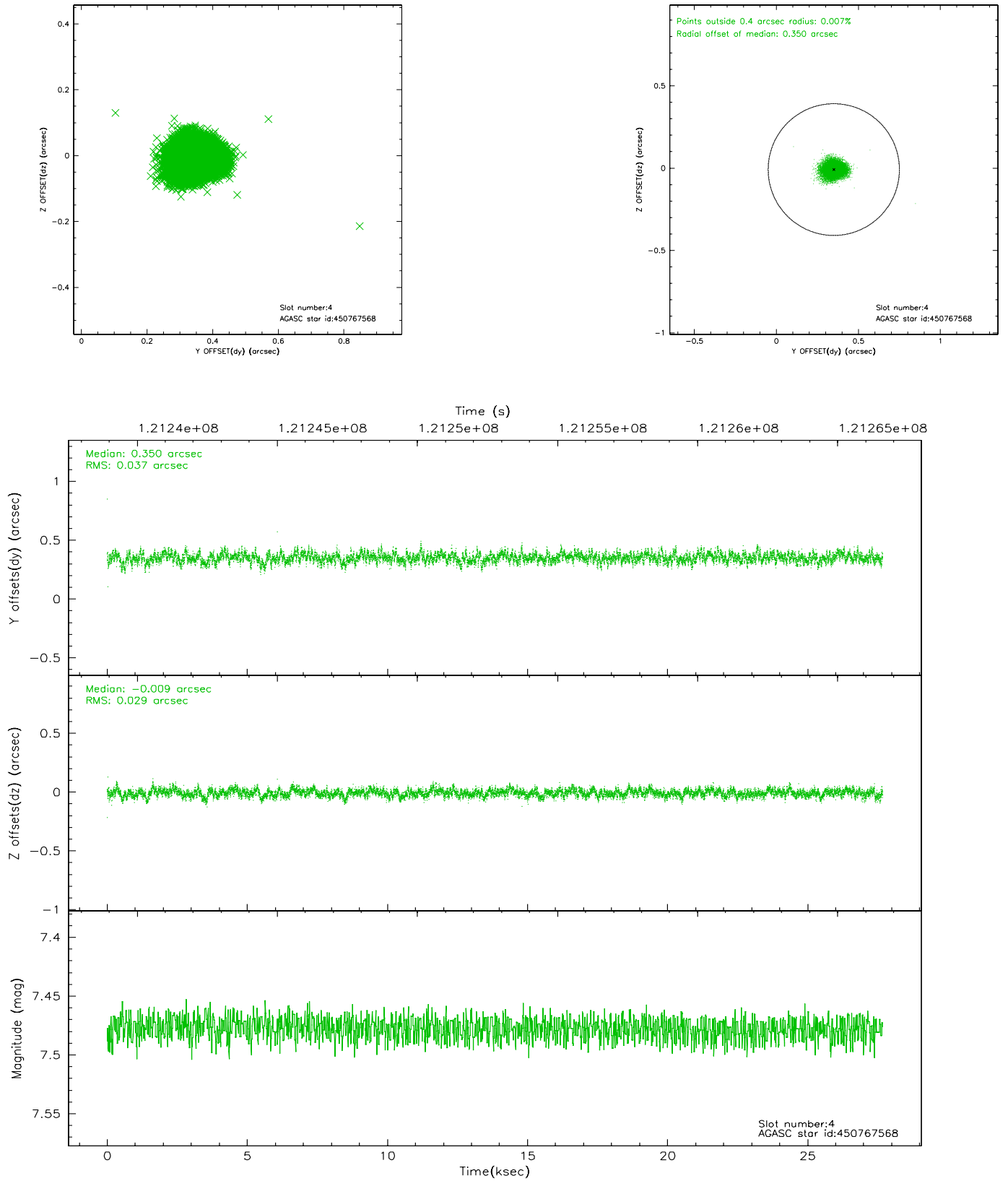
slot	status	id	mag	n_pts	med_dy	med_dz	dr1	dr2	ra	dec	mean_y	mean_z
0	FID	ACIS-S-2	7.11	6752	-0.002	0.029	0.009	0.015	0.000000	0.000000	-755.77	-1727.91
1	FID	ACIS-S-4	7.20	6750	-0.067	-0.007	0.006	0.012	0.000000	0.000000	2157.39	180.47
2	FID	ACIS-S-5	7.24	6751	0.038	-0.013	0.007	0.013	0.000000	0.000000	-1808.46	174.21
3	GUIDE	450765896	6.56	13504	-0.193	0.248	0.054	0.091	149.025073	52.268987	2019.00	-1021.54
4	GUIDE	450767568	7.48	13504	0.350	-0.009	0.049	0.081	147.522964	51.410908	-2167.59	758.68
5	GUIDE	499920080	7.96	13501	-0.325	-0.082	0.051	0.082	148.226554	52.586502	2332.50	1047.23
6	GUIDE	499918192	9.37	13497	-0.035	-0.140	0.085	0.134	147.772301	52.623738	2051.81	2009.07
7	GUIDE	450766776	8.84	13498	0.205	-0.020	0.074	0.118	148.001413	51.589652	-1146.20	37.63

2.4 Star Slots

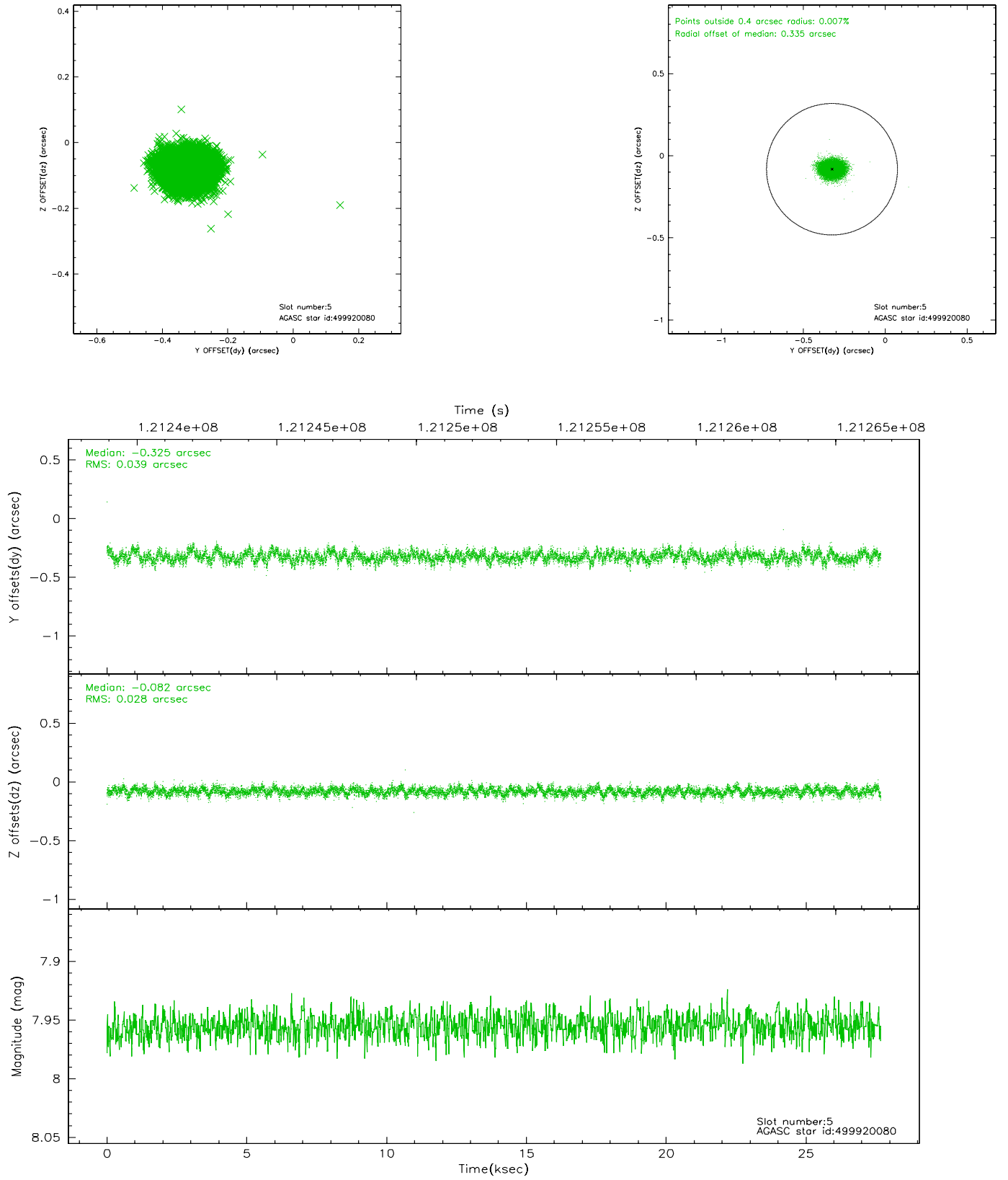
2.4.1 Slot 3



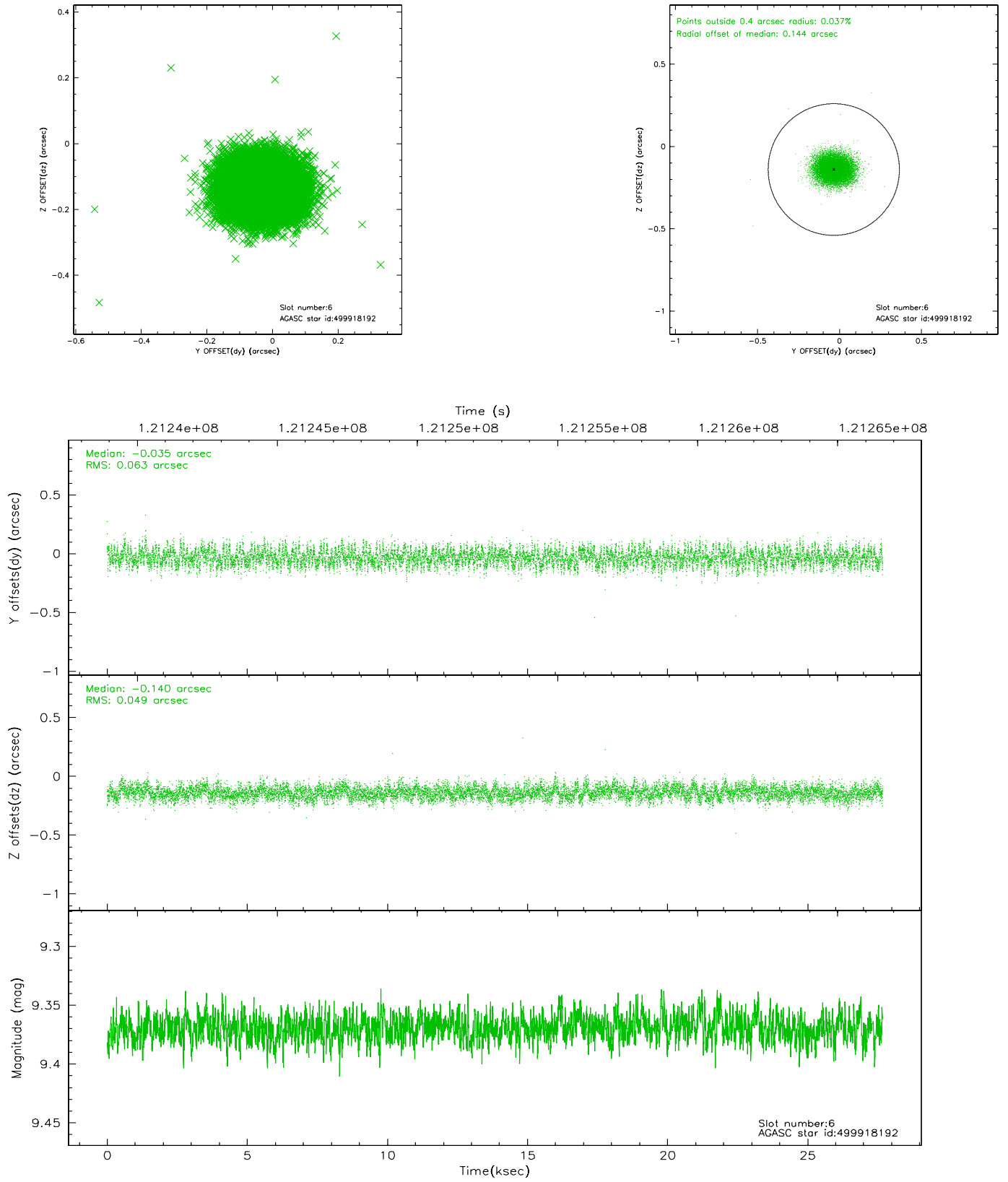
2.4.2 Slot 4



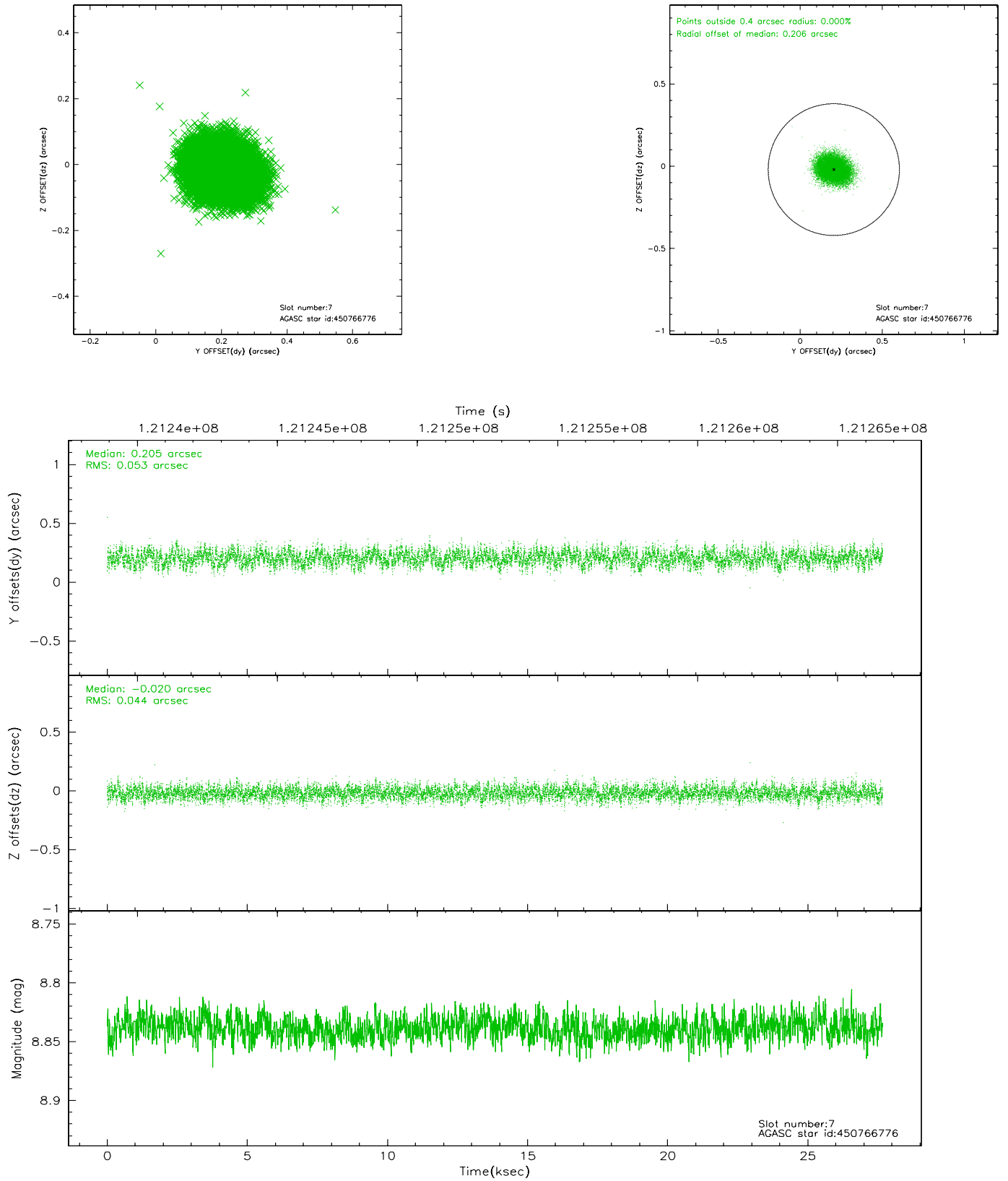
2.4.3 Slot 5



2.4.4 Slot 6

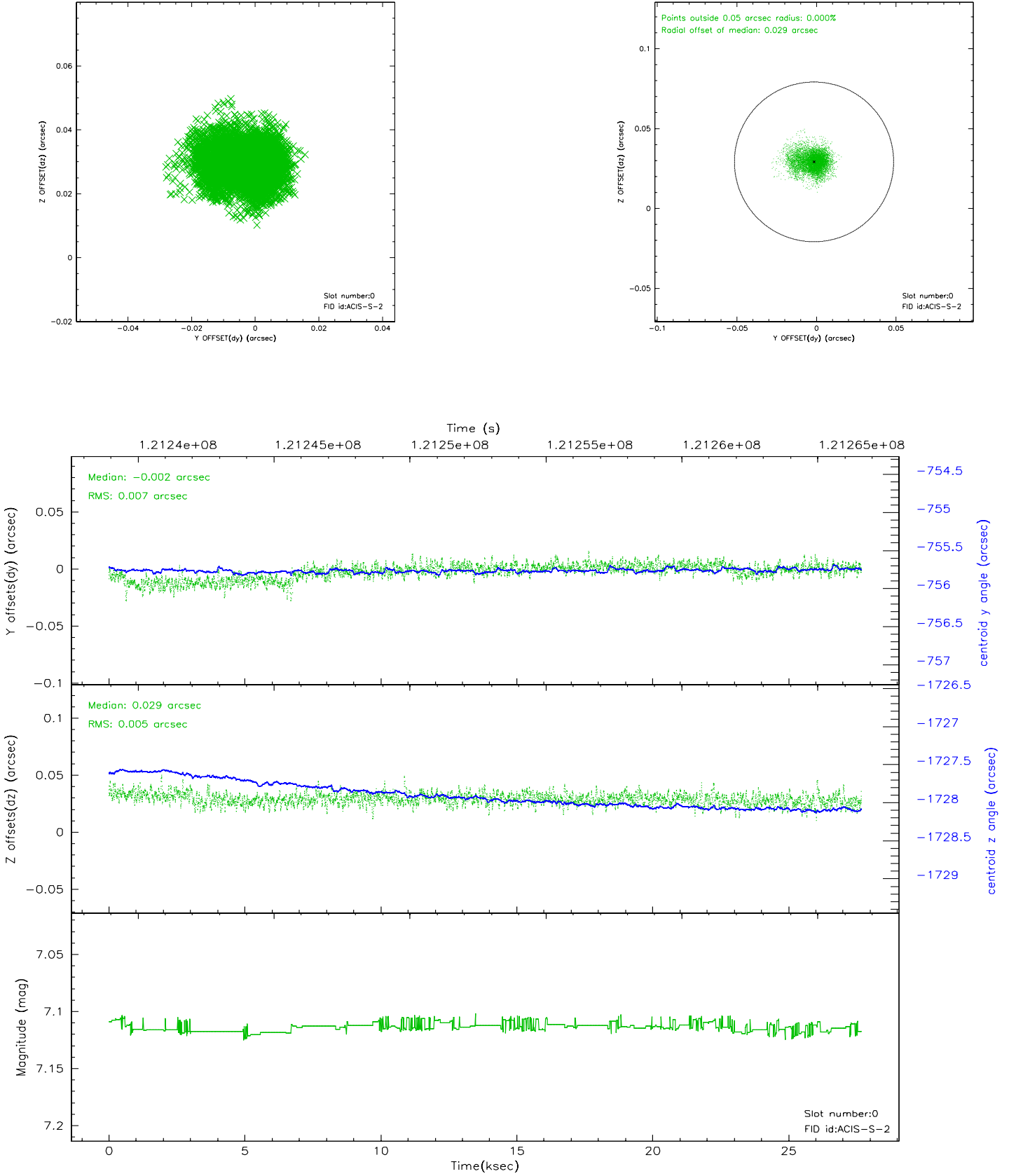


2.4.5 Slot 7

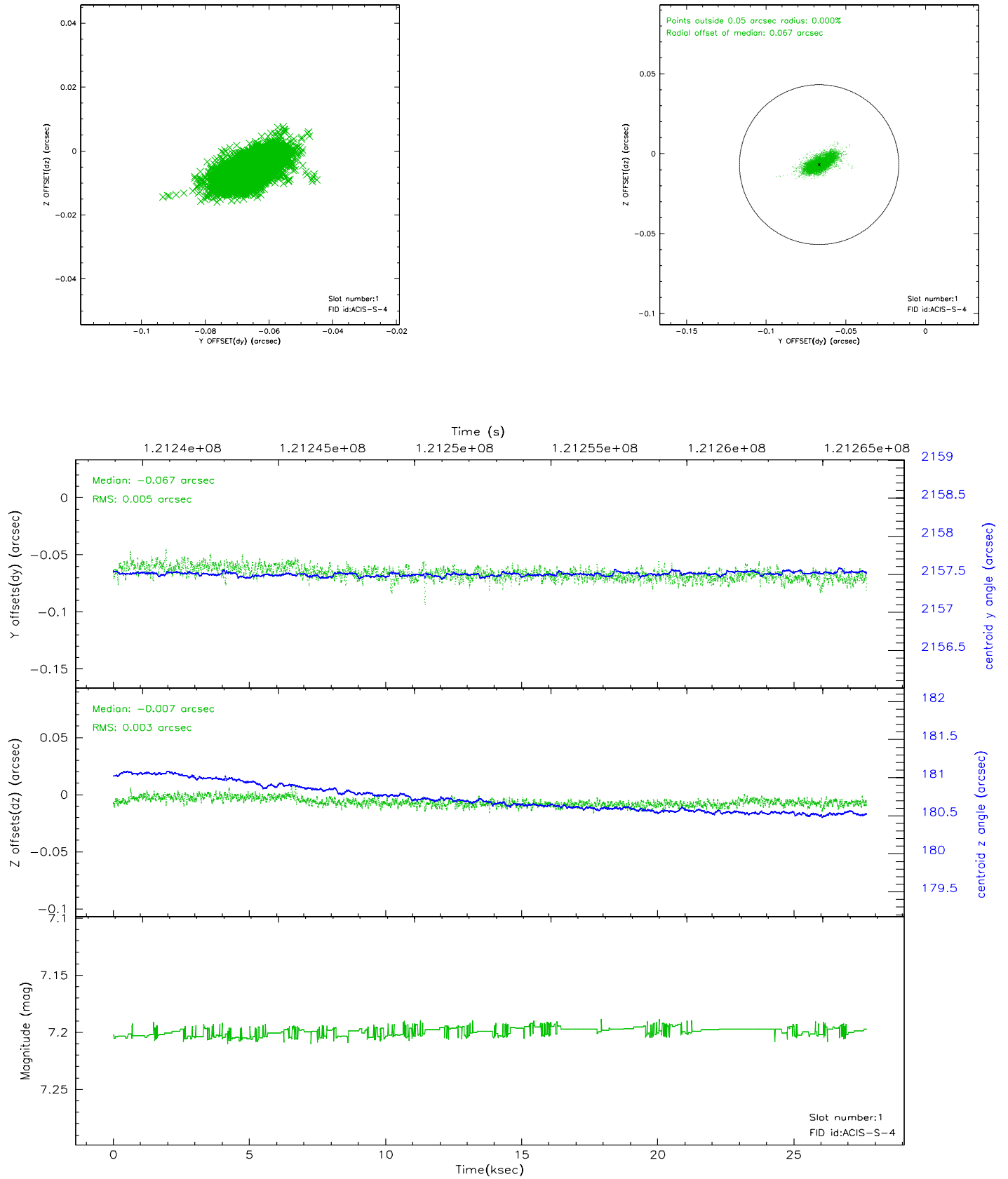


2.5 FID Slots

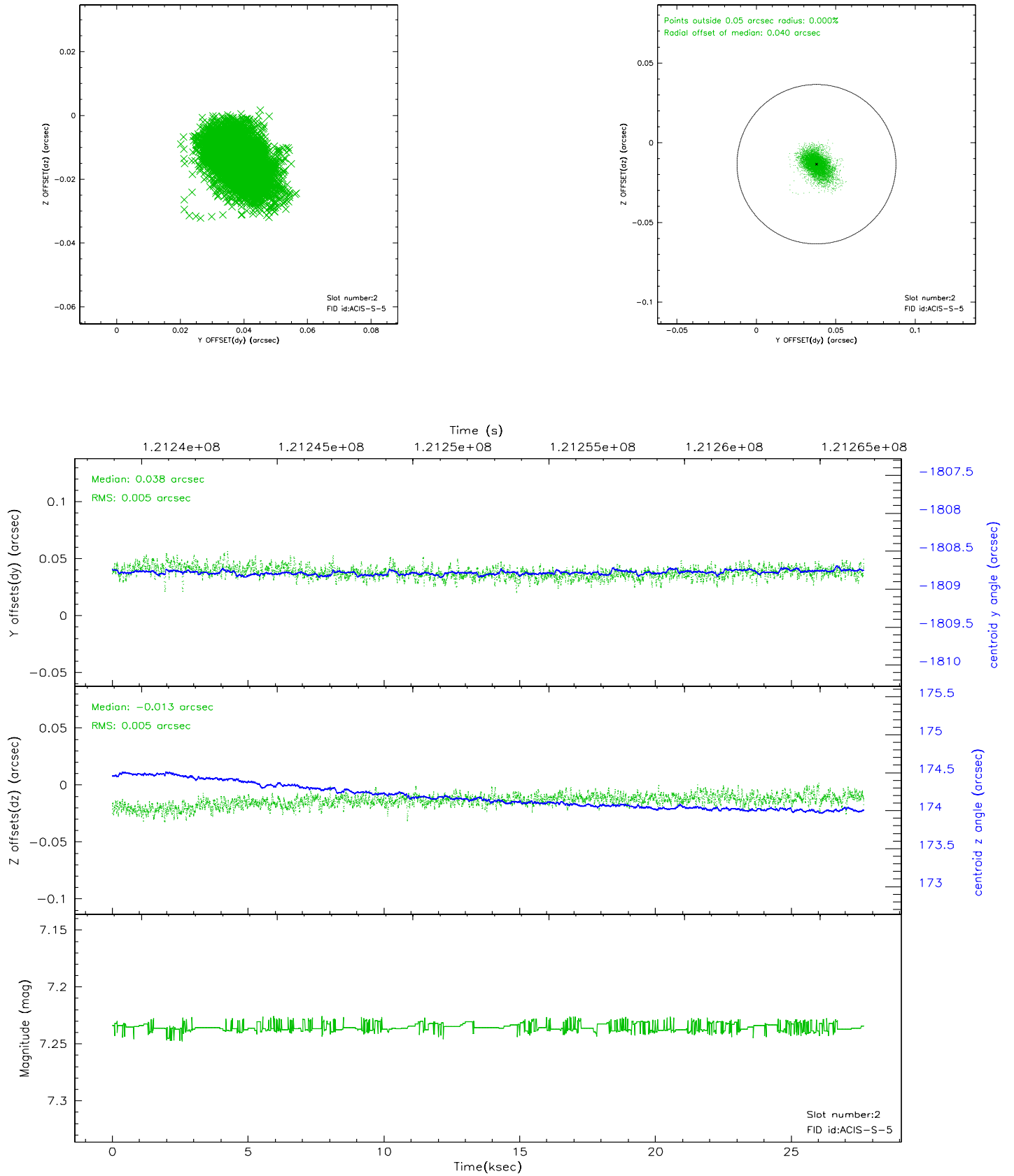
2.5.1 Slot 0



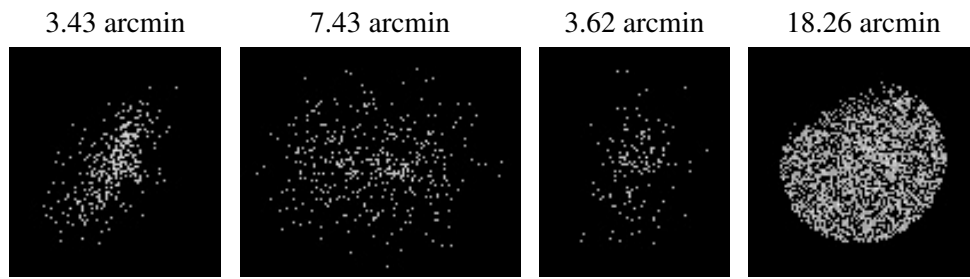
2.5.2 Slot 1



2.5.3 Slot 2



3 Point Sources



A Summary

A.1 Status

V&V Scientist	Beth Sundheim
V&V Date (YYYY-MM-DD)	2007.01.16
V&V Edition	1
V&V Disposition and Status	OK
V&V Charge Time	27.274

A.2 Comments