

# V&V Reference Report

## L2 ASCDS Version : 8.4.5

Observation 3065 - L2 Version 3  
Chandra X-Ray Center

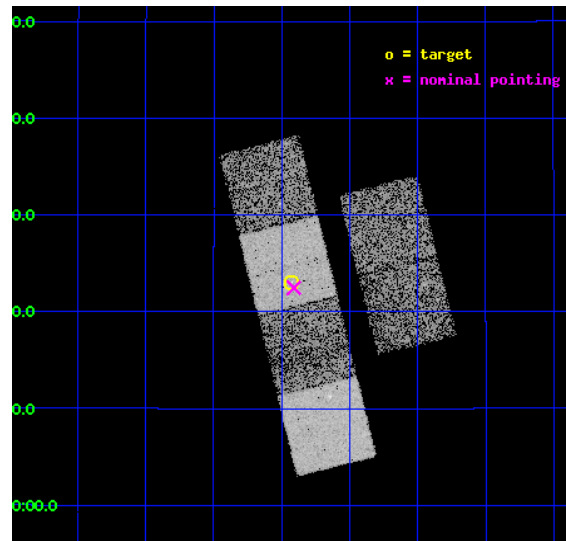
L2 Processing Date : Oct 5 2012

## Contents

<b>1</b>	<b>Front</b>	<b>2</b>
<b>2</b>	<b>OBI</b>	<b>3</b>
2.1	OBI . . . . .	3
2.1.1	Images . . . . .	3
2.1.2	Bias . . . . .	3
2.1.3	Parameters . . . . .	4
2.1.4	Events . . . . .	4
2.2	Compared Parameters . . . . .	5
2.3	Aspect . . . . .	6
2.4	Star Slots . . . . .	9
2.4.1	Slot 3 . . . . .	9
2.4.2	Slot 4 . . . . .	10
2.4.3	Slot 5 . . . . .	11
2.4.4	Slot 6 . . . . .	12
2.4.5	Slot 7 . . . . .	13
2.5	FID Slots . . . . .	14
2.5.1	Slot 0 . . . . .	14
2.5.2	Slot 1 . . . . .	15
2.5.3	Slot 2 . . . . .	16
<b>A</b>	<b>Summary</b>	<b>17</b>
A.1	Status . . . . .	17
A.2	Comments . . . . .	17

# 1 Front

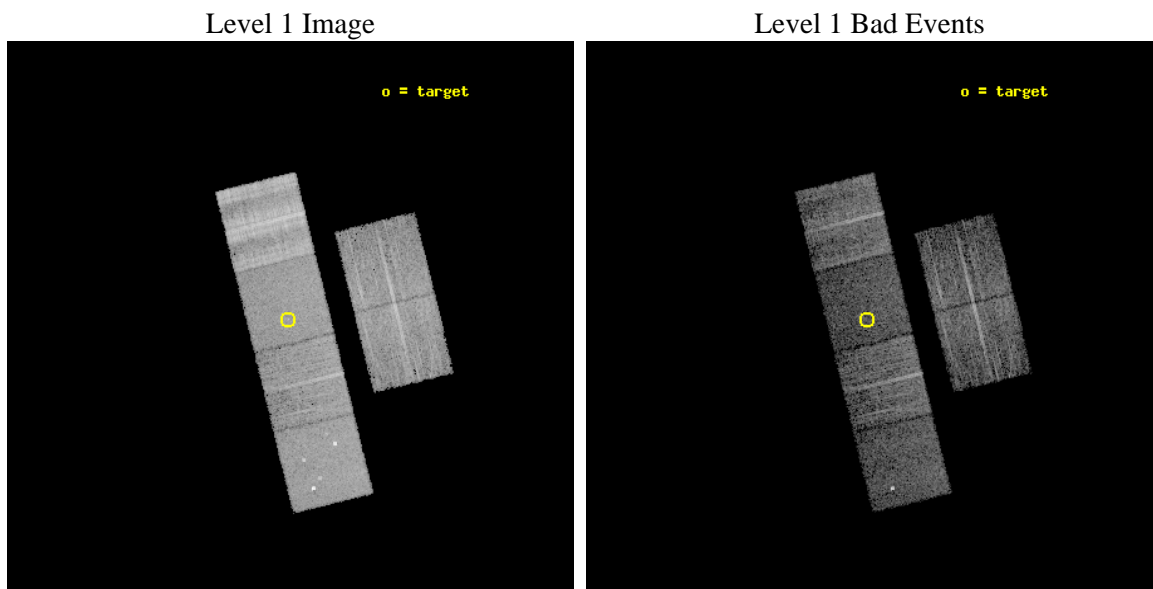
seq_num	700504	Sequence number
obs_id	3065	Observation id
title	X-RAY WEAK BROAD-LINE QUASARS: ABSORPTION OR INTRINSIC X_RAY WEAKNESS ?	Proposal title
observer	Dr Guido Risaliti	Principal investigator
object	HS 0830+1833	Source name
dtcycle	0	&#160
cycle	P	events from which exps? Prim/Second/Both
ra_targ	128.231667	Observer's specified target RA [deg]
dec_targ	18.383472	Observer's specified target Dec [deg]
ra_nom	128.22754756741	Nominal RA [deg]
dec_nom	18.374559070982	Nominal Dec [deg]
roll_nom	256.20119287108	Nominal Roll [deg]
revision	3	Processing version of data
ontime	6476.4340666085	Sum of GTIs [s]
livetime	6394.4255588167	Livetime [s]
ontime2	6473.23411645	Sum of GTIs [s]
ontime3	6476.3109466136	Sum of GTIs [s]
ontime5	6476.3930266052	Sum of GTIs [s]
ontime6	6476.3519866168	Sum of GTIs [s]
ontime7	6476.4340666085	Sum of GTIs [s]
ontime8	6476.2699066103	Sum of GTIs [s]
l2events	66002	Number of level 2 events



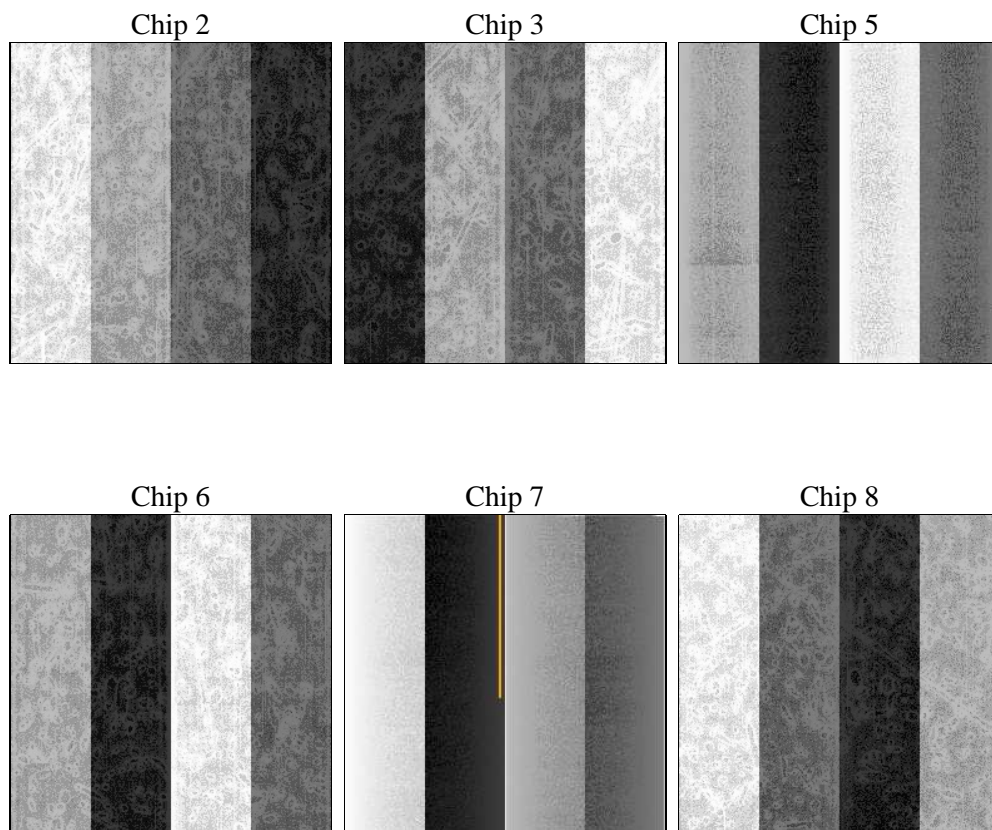
## 2 OBI

### 2.1 OBI

#### 2.1.1 Images



#### 2.1.2 Bias



### 2.1.3 Parameters

obi_num	1	Obi number	sched_exp_time	6500.000000	[s] Scheduled observation exposure time
ascdsver	8.4.5	Processing system revision	ontime	6476.4340666085	Sum of GTIs [s]
caldbver	4.5.2	&#160	ontime2	6473.23411645	Sum of GTIs [s]
date	2012-10-04T11:57:18	Date and time of file creation	ontime3	6476.3109466136	Sum of GTIs [s]
revision	3	Processing version of data	ontime5	6476.3930266052	Sum of GTIs [s]
			ontime6	6476.3519866168	Sum of GTIs [s]
			ontime7	6476.4340666085	Sum of GTIs [s]
			ontime8	6476.2699066103	Sum of GTIs [s]
			l1events	364163	Number of level 1 events

### 2.1.4 Events

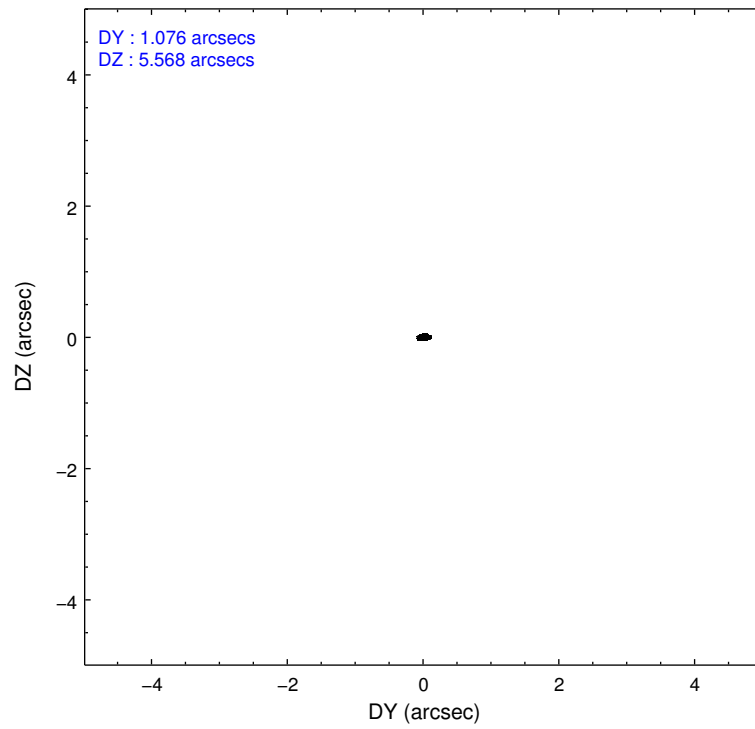
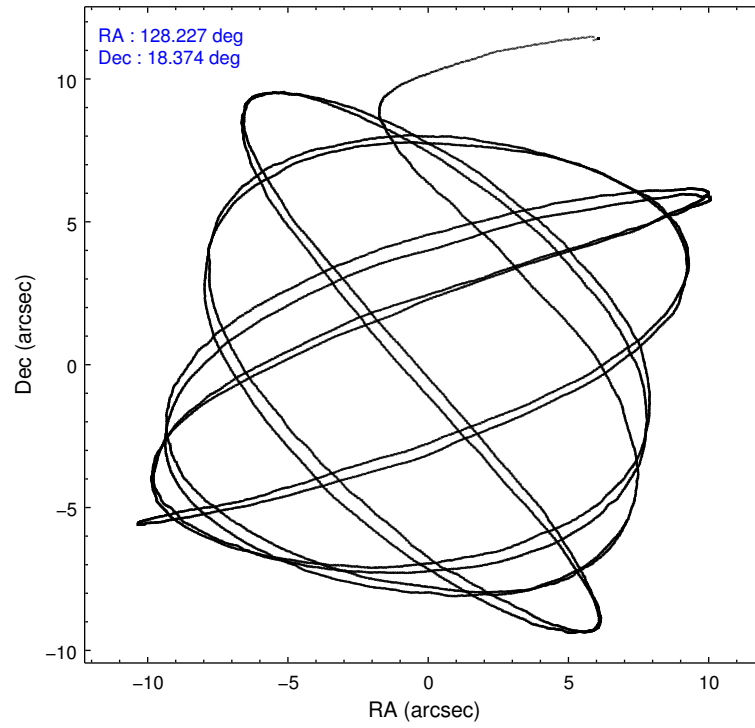
	ccd 2	ccd 3	ccd 5	ccd 6	ccd 7	ccd 8		ccd 2	ccd 3	ccd 5	ccd 6	ccd 7	ccd 8
level 1 events	51424	47226	61949	51844	52807	98913	grade 0 events	2819	2084	3961	2339	2142	12281
rejected events	44764	41850	33144	45725	30869	52565		5%	4%	6%	4%	4%	12%
rejected %	87%	88%	53%	88%	58%	53%	grade 1 events	28	15	84	16	70	100
								0%	0%	0%	0%	0%	0%
							grade 2 events	1775	1353	8886	1764	4556	7924
								3%	2%	14%	3%	8%	8%
							grade 3 events	418	421	1322	441	2009	7342
								0%	0%	2%	0%	3%	7%
							grade 4 events	555	476	1217	464	1965	6514
								1%	1%	1%	0%	3%	6%
							grade 5 events	1447	1541	4416	1797	4840	2770
								2%	3%	7%	3%	9%	2%
							grade 6 events	1097	1044	13448	1119	11288	12316
								2%	2%	21%	2%	21%	12%
							grade 7 events	43285	40292	28615	43904	25937	49666
								84%	85%	46%	84%	49%	50%

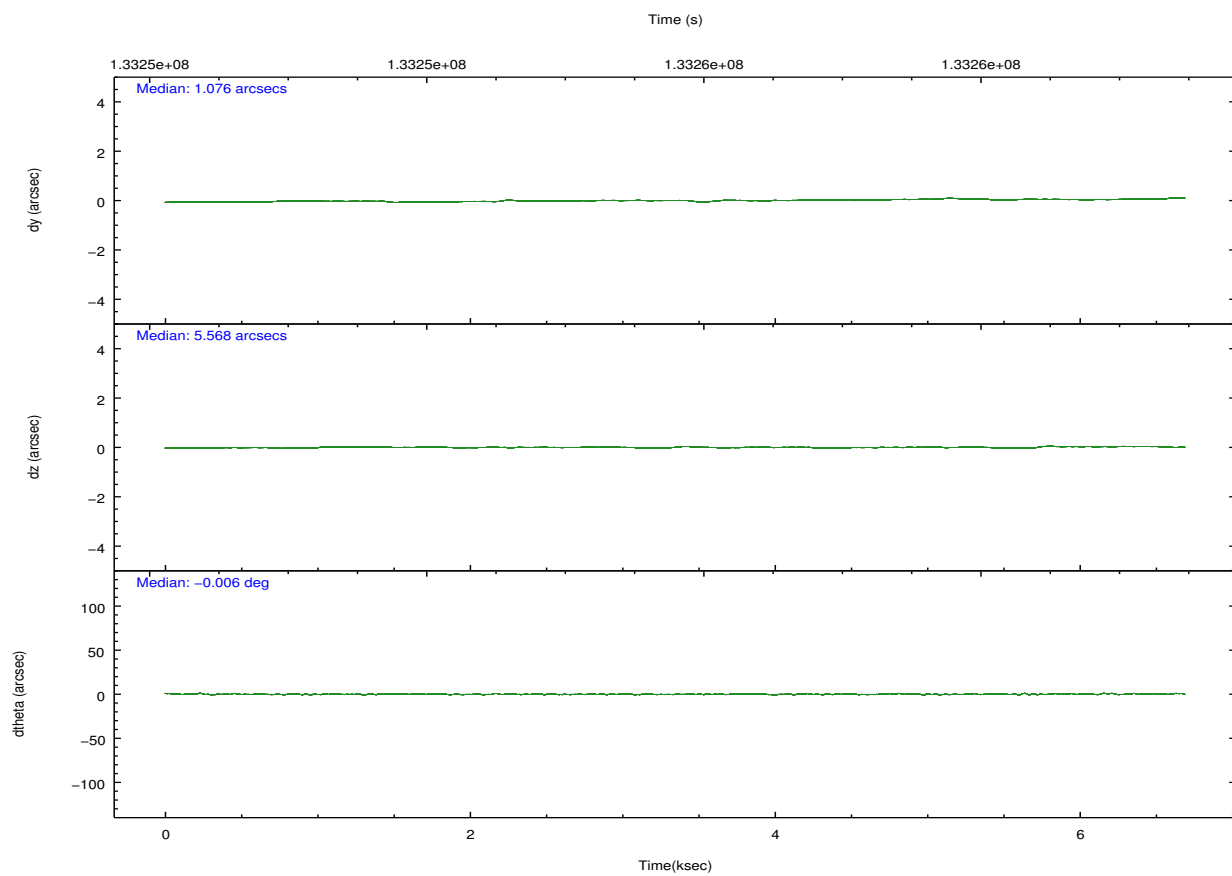
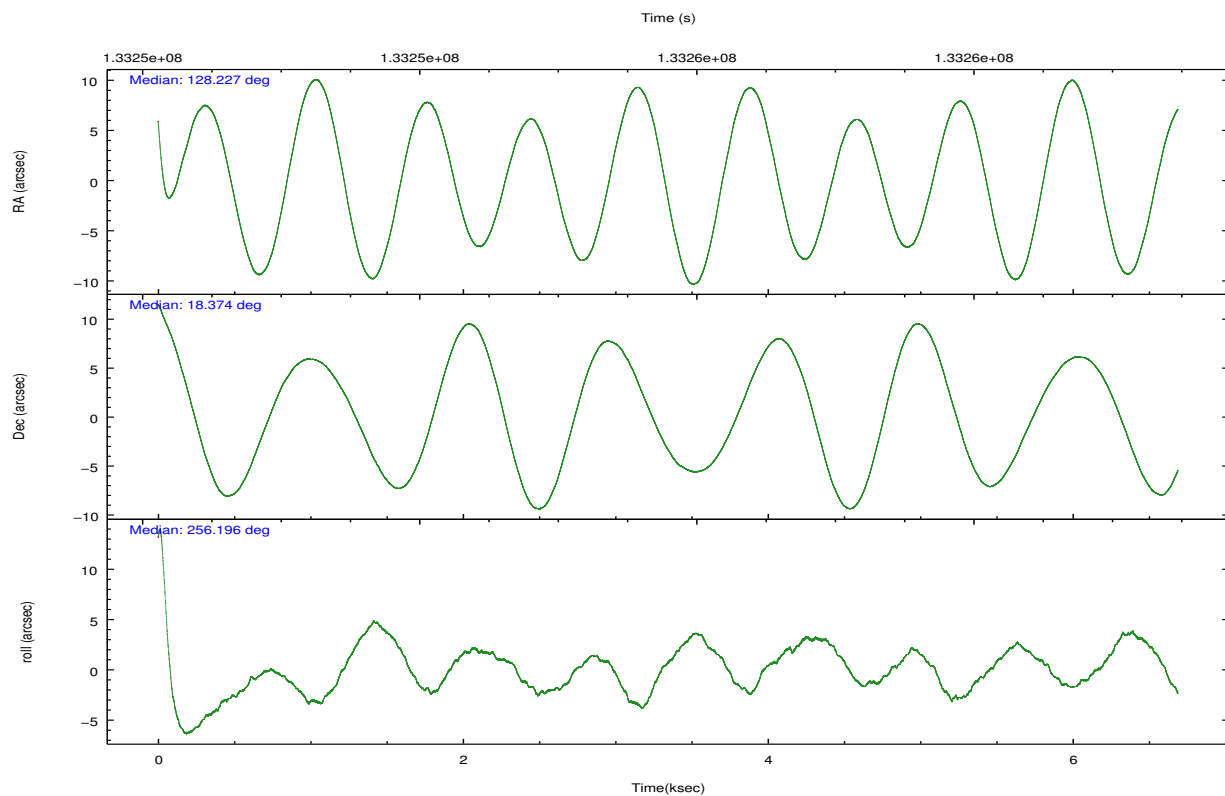


## 2.2 Compared Parameters

Parameter	Planned	Actual	Parameter	Planned	Actual
Instrument	ACIS	ACIS	Obspar format version number	7	7
Detector	ACIS-235678	ACIS-235678	Obspar file type	PREDICTED	ACTUAL
Grating	NONE	NONE	Obspar update status	NONE	UPDATED
Data mode	FAINT	FAINT	Number of optional ACIS chips dropped	0	0
Observation mode	POINTING	POINTING	On-chip summing requested	N	N
[deg] Pointing RA	128.219164	128.2275475674089	Subarray requested	NONE	NONE
[deg] Pointing Dec	18.400673	18.37455907098215	Alternating exposures requested	N	N
[deg] Pointing Roll	256.047164	256.2011928710772	[s] Primary exposure time	0.000000	3.2
[mm] SIM focus pos	-0.684267	-0.6828225247311905			
[mm] SIM defocus	0	0.001444936568705701			
[mm] SIM translation stage pos	-190.132523	-190.1425803651734			
[mm] SIM translation stage offset	0	0.01005778216563158			
[s] Observation start time (MET)	133252635.184000	133251666.32015			
Observation start date	2002-03-23T06:36:11	2002-03-23T06:21:06			
[s] Observation end time (MET)	133259135.184000	133259498.34547			
Observation end date	2002-03-23T08:24:31	2002-03-23T08:31:38			
Read mode	TIMED	TIMED			

## 2.3 Aspect



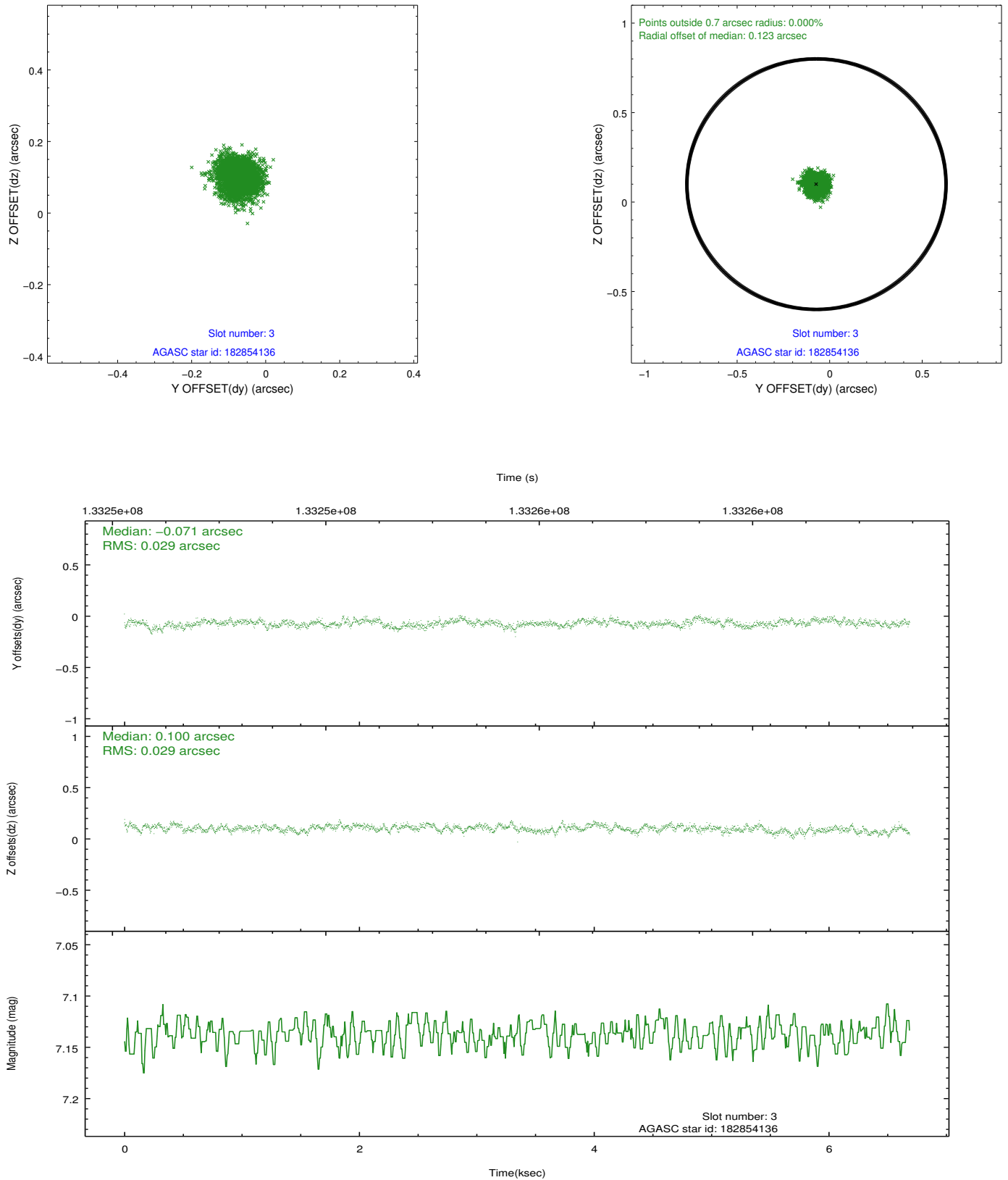


### Slot Statistics

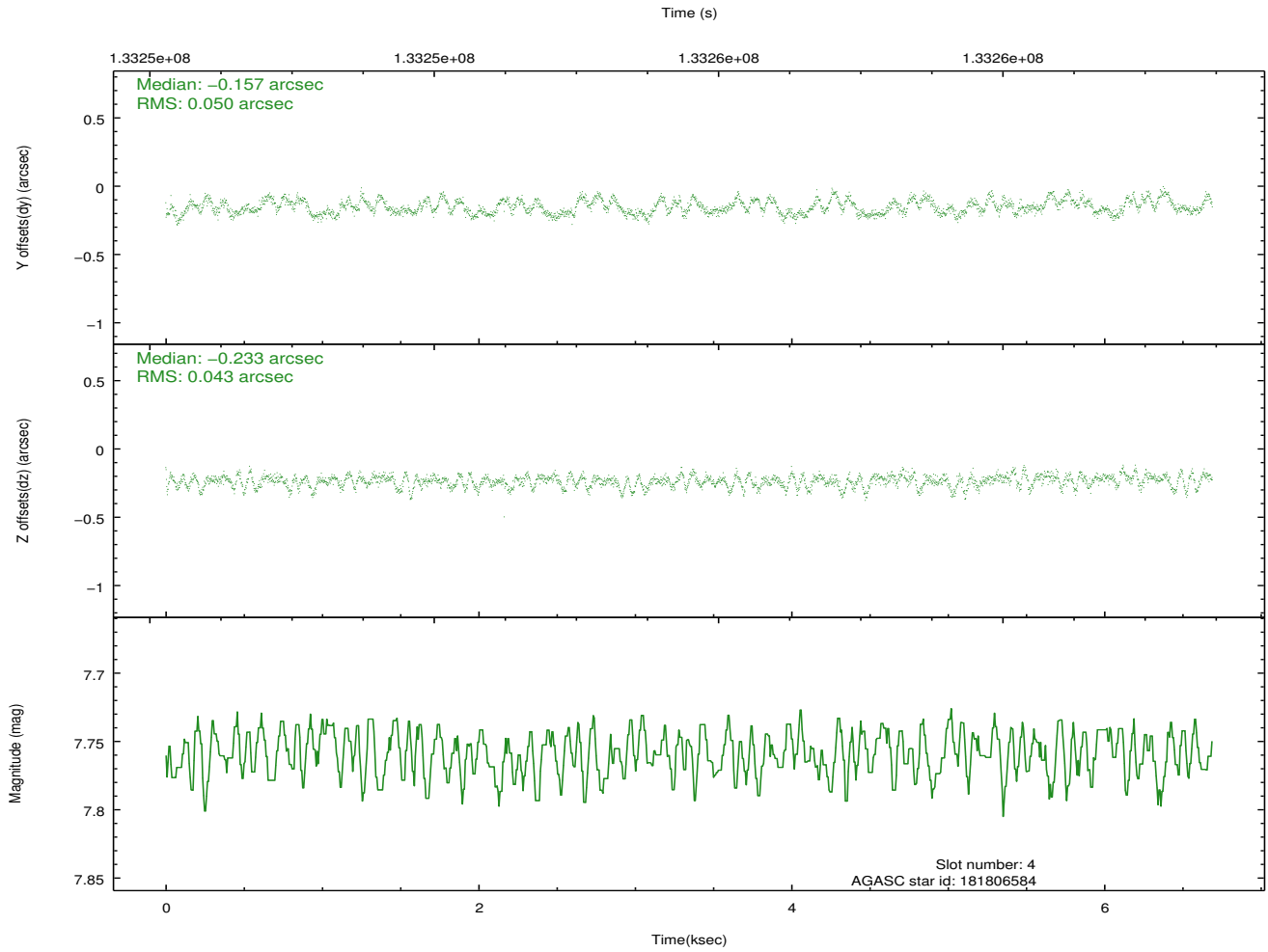
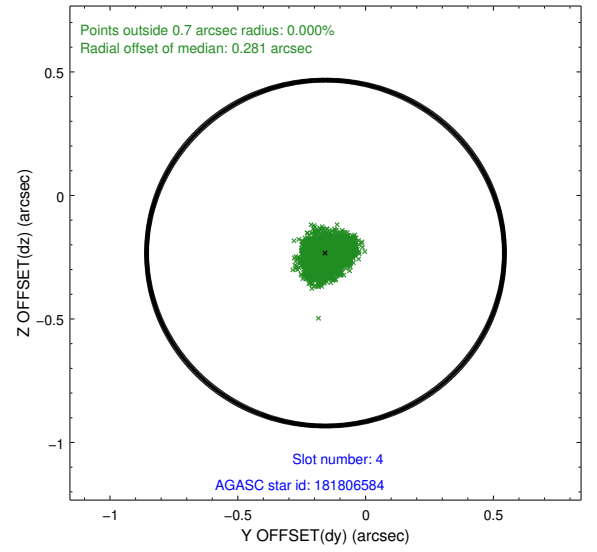
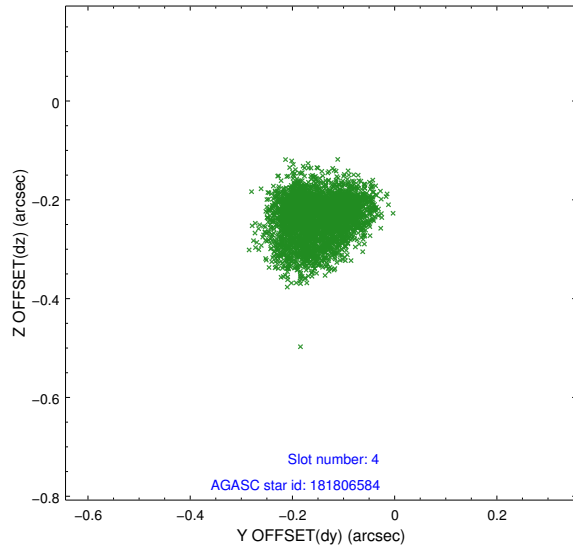
slot	status	id	mag	n_pts	med_dy	med_dz	dr1	dr2	ra	dec	mean_y	mean_z
0	FID	ACIS-S-2	7.12	1632	-0.064	-0.010	0.009	0.023	0.000000	0.000000	-753.68	-1726.67
1	FID	ACIS-S-4	7.21	1631	0.027	0.034	0.011	0.037	0.000000	0.000000	2159.24	181.03
2	FID	ACIS-S-5	7.24	1631	0.008	-0.015	0.010	0.026	0.000000	0.000000	-1805.38	175.54
3	GUIDE	182854136	7.14	3263	-0.071	0.100	0.044	0.070	128.597165	18.397631	-303.07	1256.09
4	GUIDE	181806584	7.76	3264	-0.157	-0.233	0.072	0.109	127.751958	18.968379	-1602.93	-2036.45
5	GUIDE	181806456	8.32	3264	-0.201	-0.084	0.067	0.105	127.629228	18.942971	-1414.92	-2421.36
6	GUIDE	181278800	9.05	3263	0.180	0.045	0.076	0.124	127.785322	17.937491	1973.83	-1040.47
7	GUIDE	182846992	9.23	3261	0.248	0.181	0.071	0.114	128.505230	17.811144	1822.44	1463.68

## 2.4 Star Slots

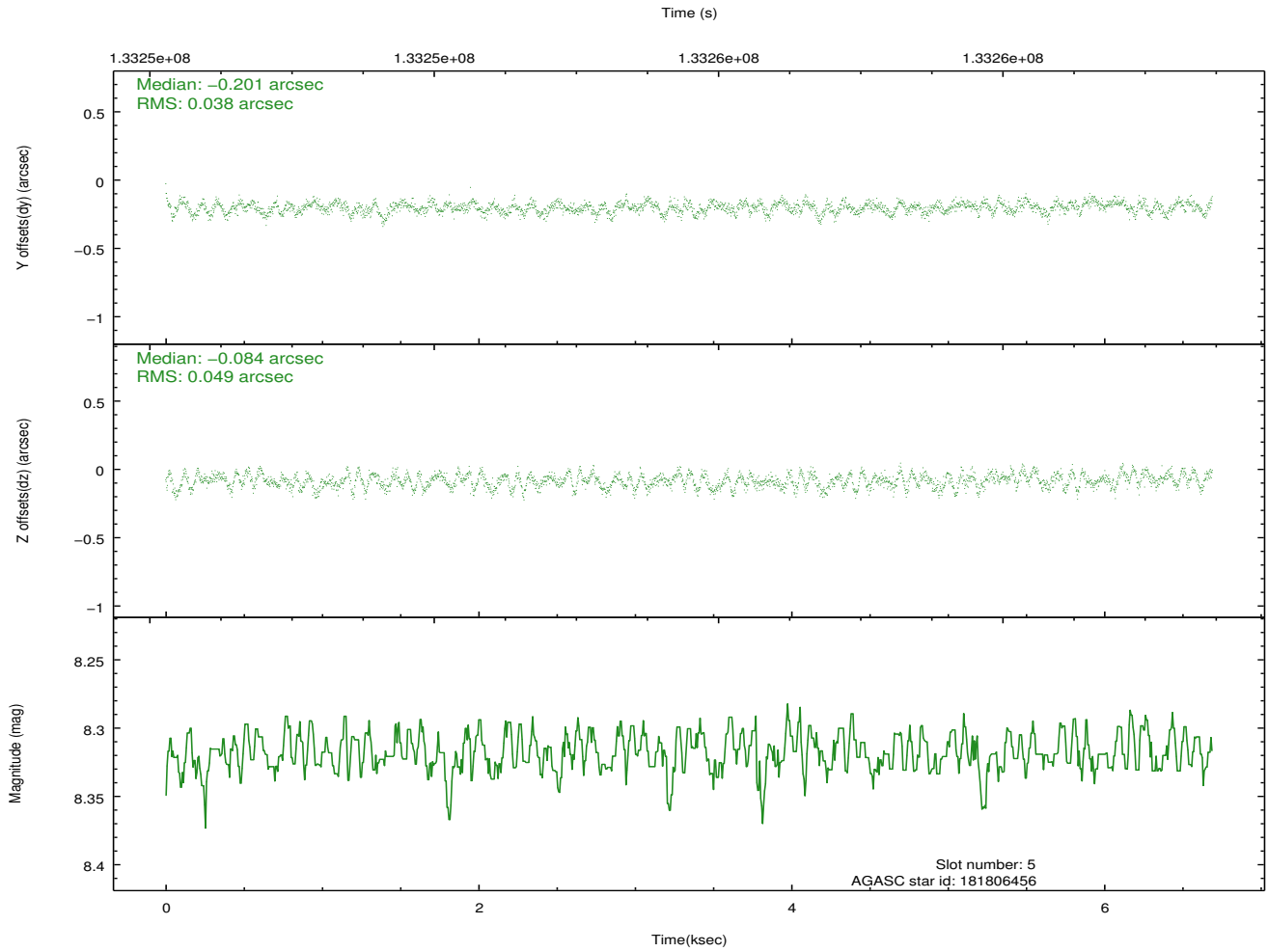
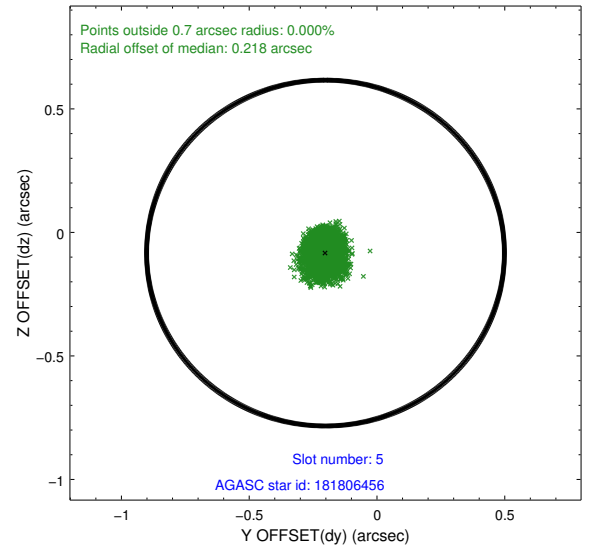
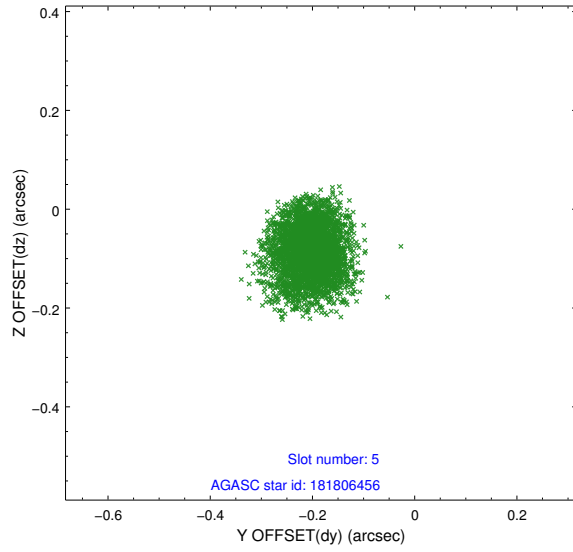
### 2.4.1 Slot 3



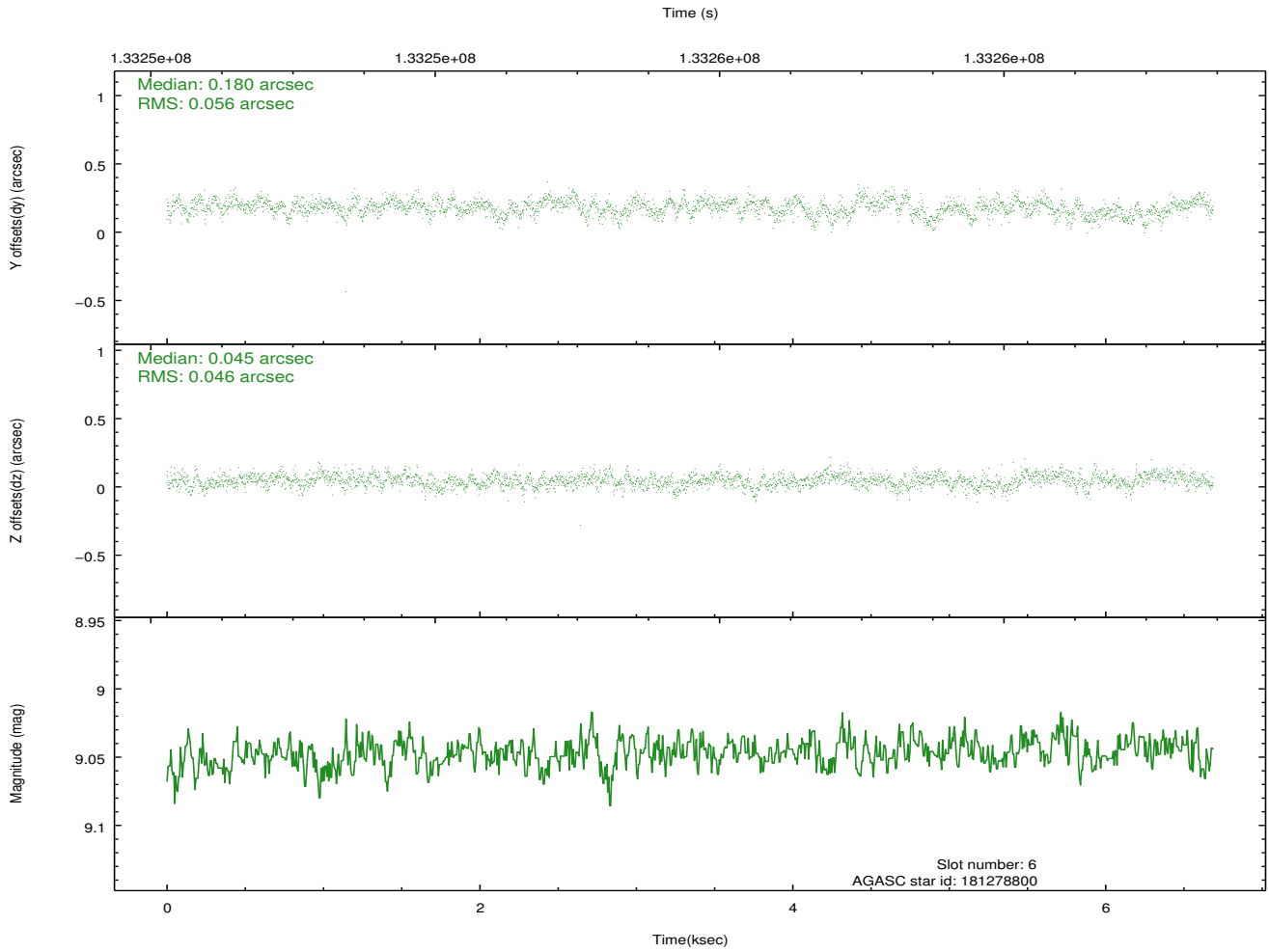
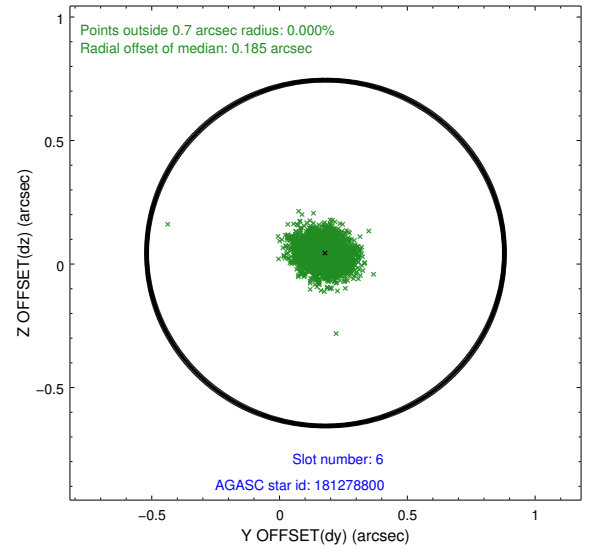
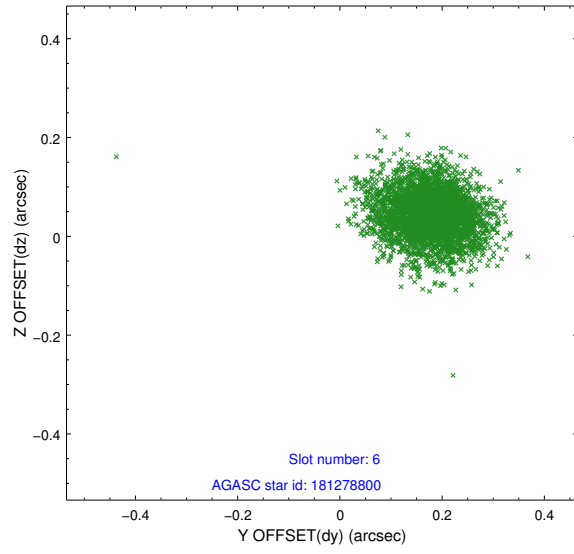
## 2.4.2 Slot 4



### 2.4.3 Slot 5

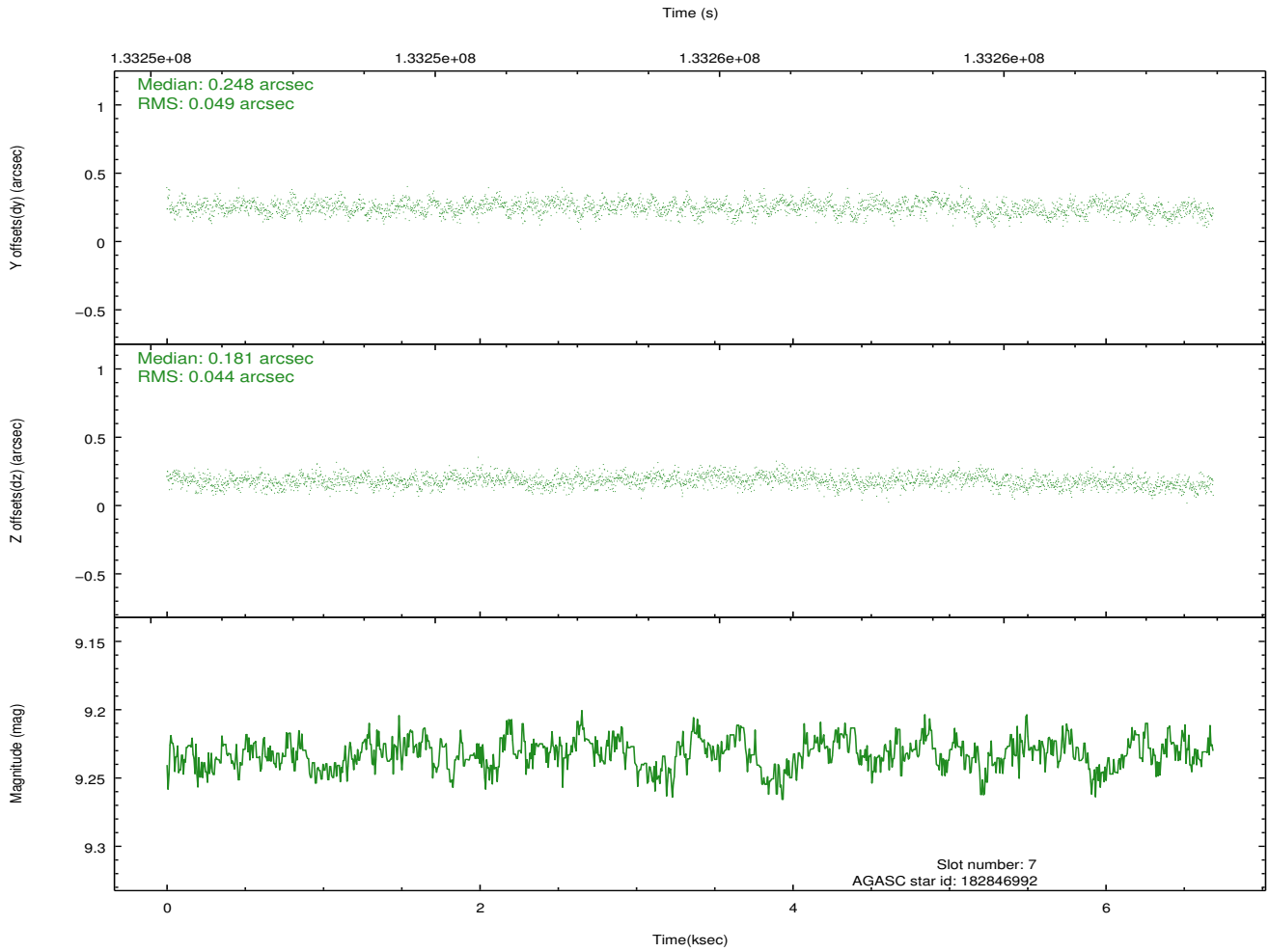
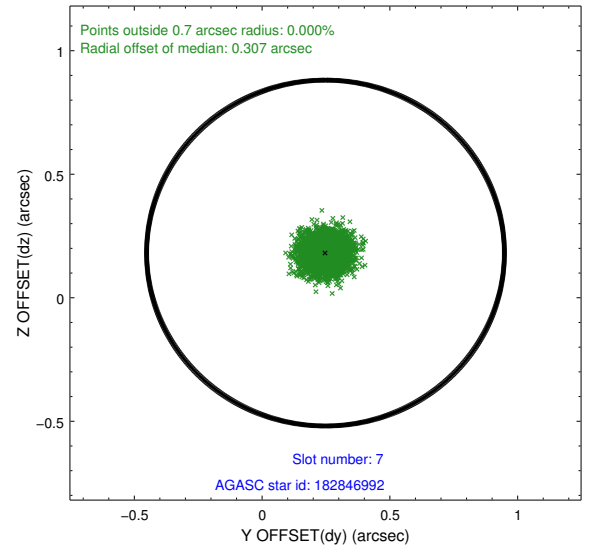
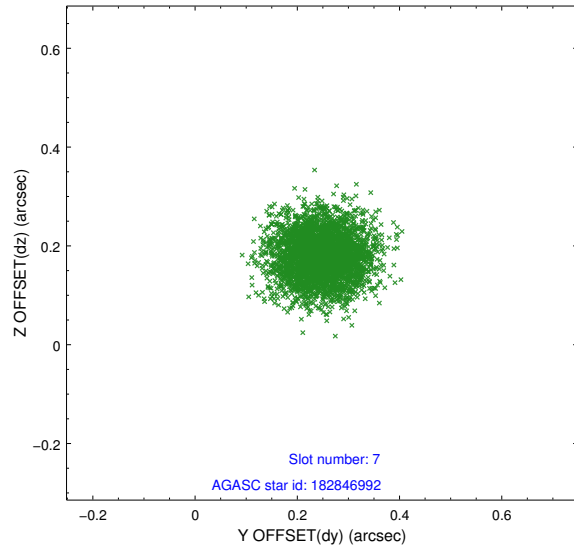


## 2.4.4 Slot 6



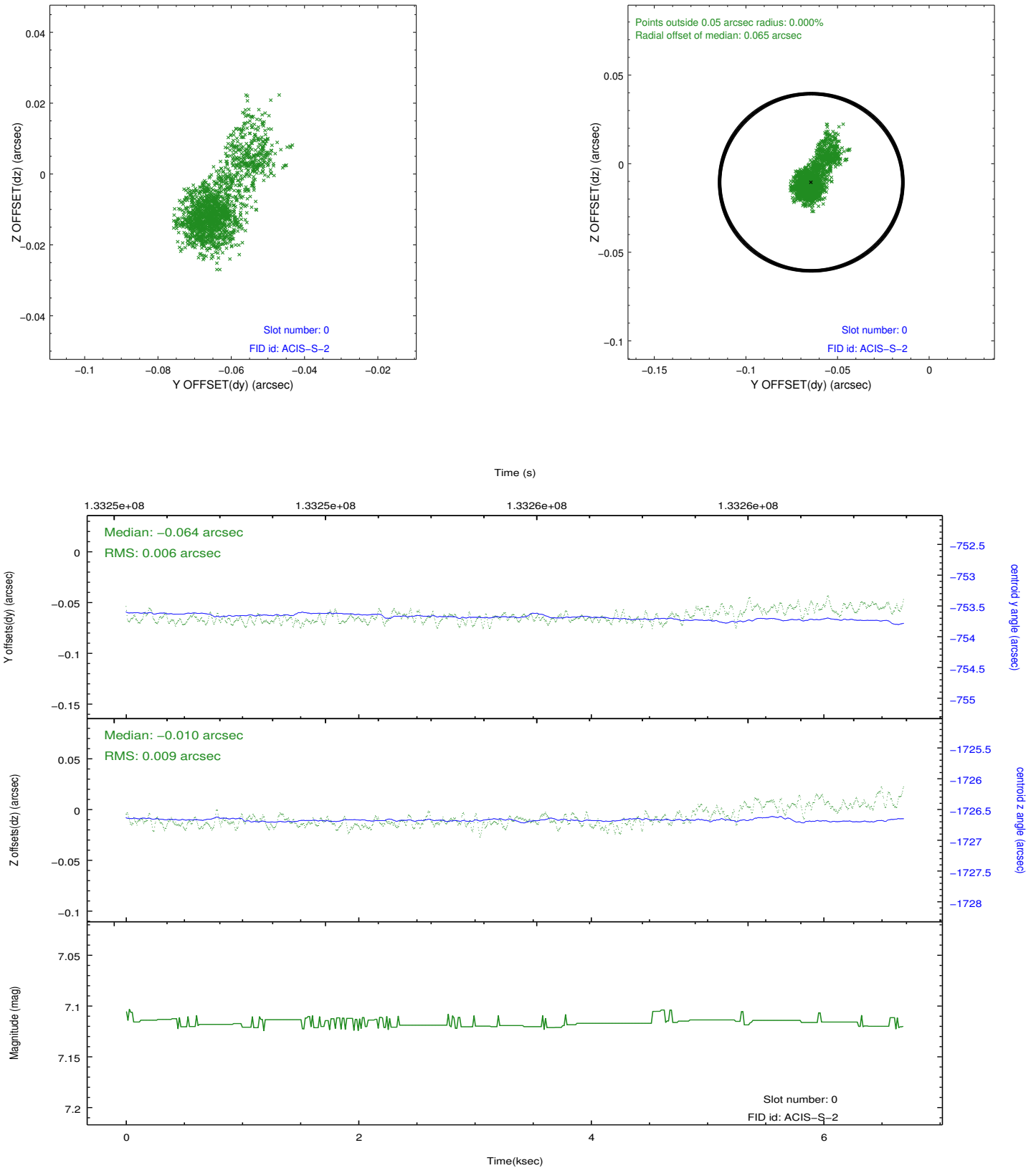


## 2.4.5 Slot 7

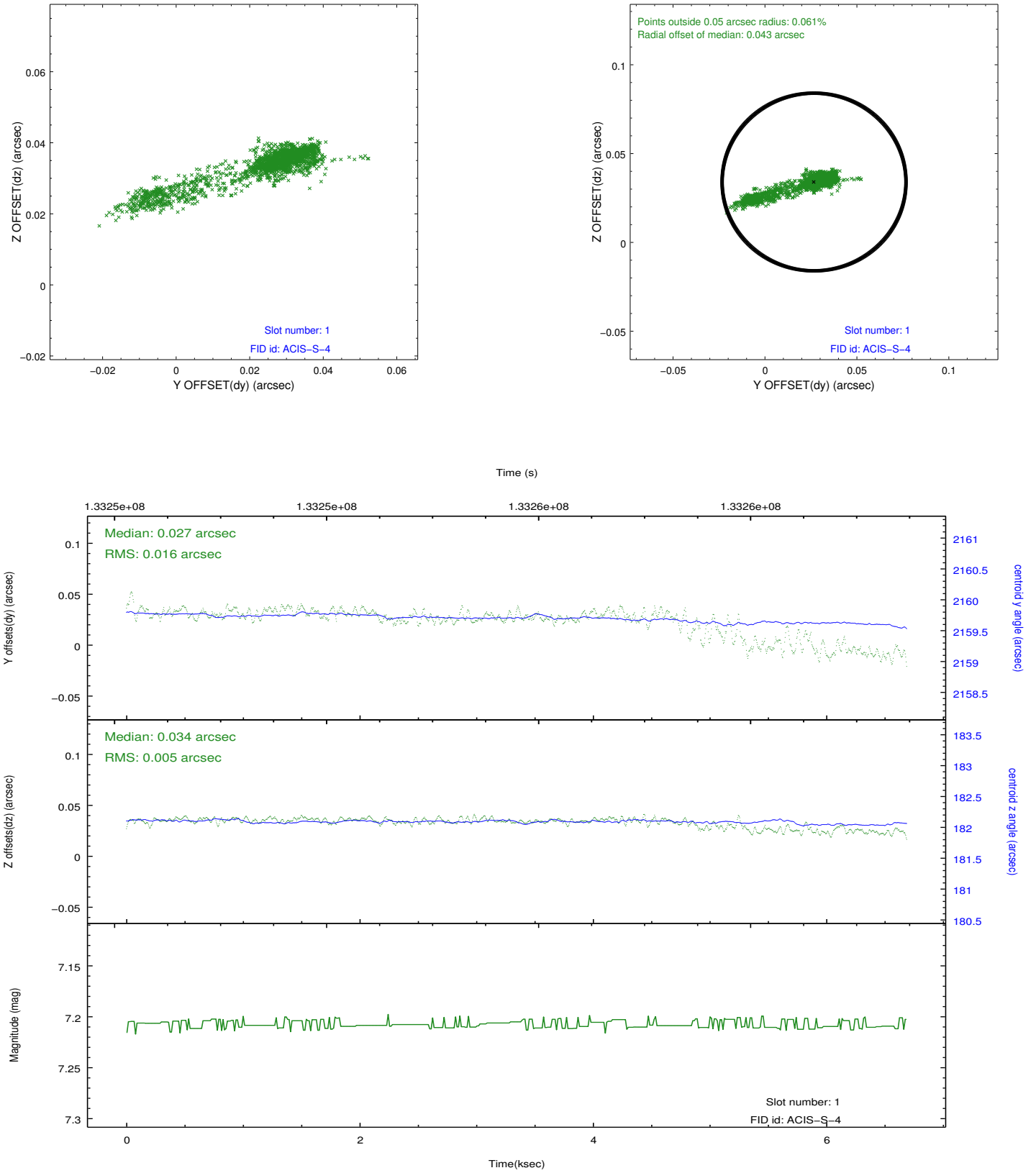


## 2.5 FID Slots

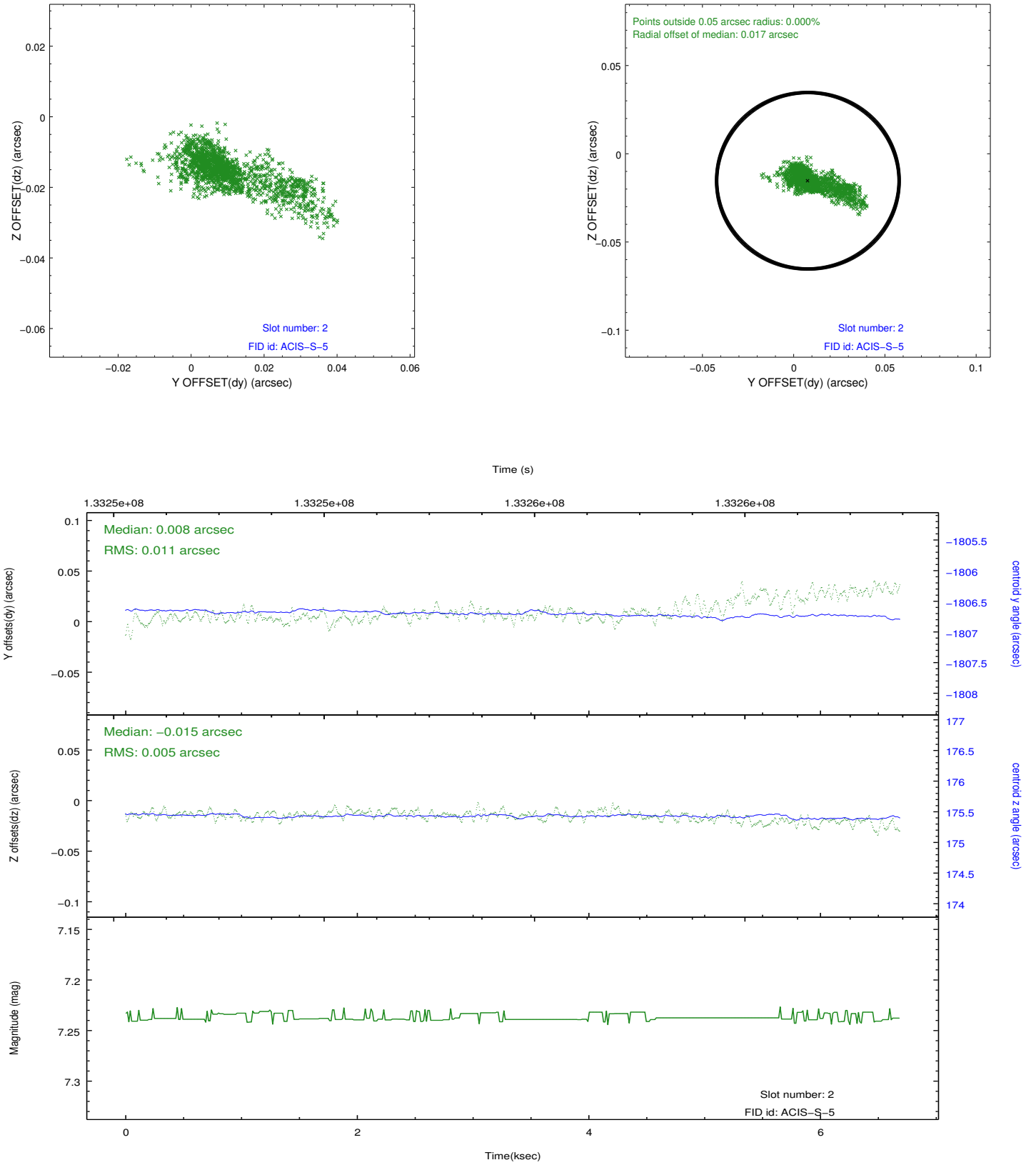
### 2.5.1 Slot 0



## 2.5.2 Slot 1



### 2.5.3 Slot 2



## A Summary

### A.1 Status

V&V Scientist	Beth Sundheim
V&V Date (YYYY-MM-DD)	2012.10.10
V&V Edition	1
V&V Disposition and Status	OK
V&V Charge Time	6.476

### A.2 Comments