

V&V Reference Report

L2 ASCDS Version : 7.6.8.1

Observation 3045 - L2 Version 001
Chandra X-Ray Center

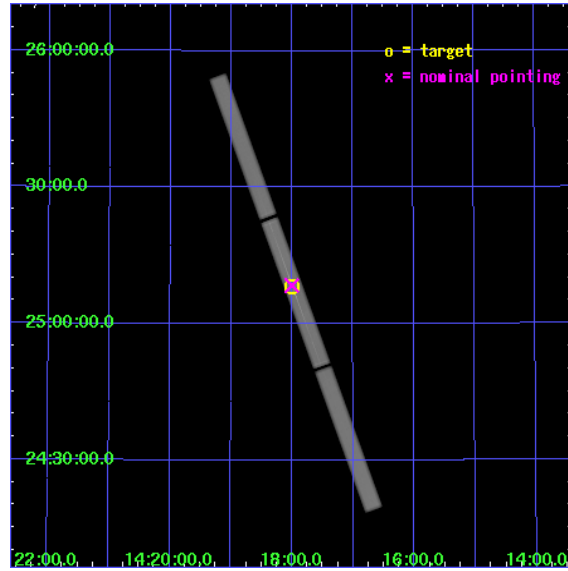
L2 Processing Date : Aug 29 2006

Contents

1	Front	2
2	OBI	3
2.1	OBI	3
2.1.1	Images	3
2.1.2	Parameters	4
2.1.3	Events	4
2.2	Compared Parameters	5
2.3	Aspect	6
2.4	Star Slots	9
2.4.1	Slot 3	9
2.4.2	Slot 4	10
2.4.3	Slot 5	11
2.4.4	Slot 6	12
2.4.5	Slot 7	13
2.5	FID Slots	14
2.5.1	Slot 0	14
2.5.2	Slot 1	15
2.5.3	Slot 2	16
3	Gratings	17
3.1	LETG Arm	17
A	Summary	19
A.1	Status	19
A.2	Comments	19

1 Front

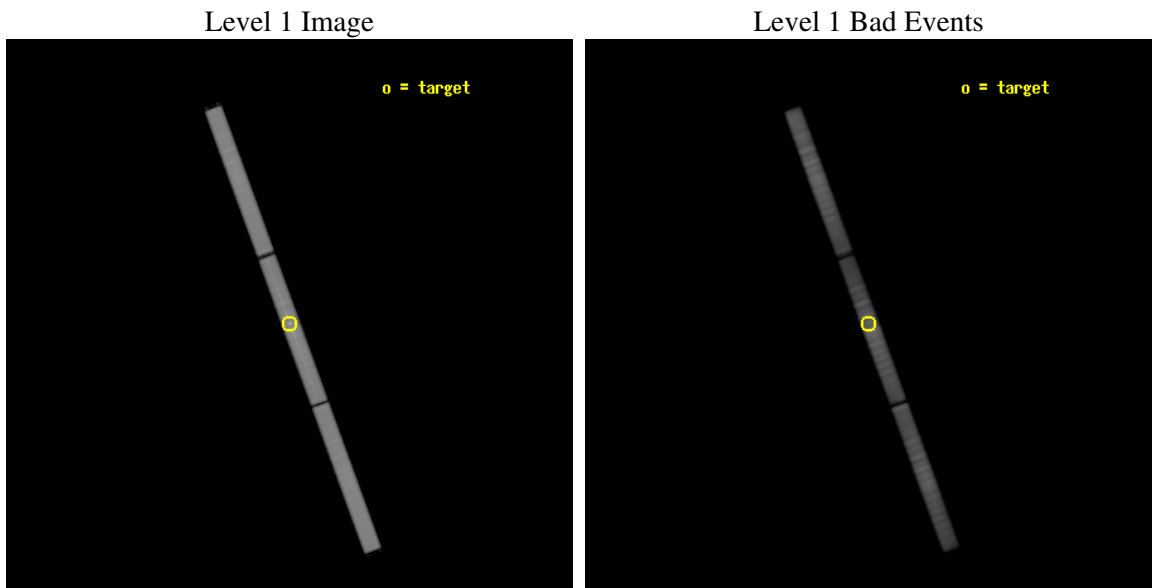
seq_num	700484
obs_id	3045
title	RESOLVING THE WARM ABSORBER IN NGC 5548
observer	Dr. Jelle Kaastra
object	NGC 5548
ra_targ	214.498333
dec_targ	25.136778
ra_nom	214.50028177887
dec_nom	25.141148332824
roll_nom	69.80253964698
revision	2
ontime	169734.1130832
livetime	168711.01870581
l2events	7499453



2 OBI

2.1 OBI

2.1.1 Images



2.1.2 Parameters

obi_num	0
ascdsver	7.6.8.1
caldbver	3.2.3
date	2006-08-28T17:17:00
revision	2

sched_exp_time	169499.320000
ontime	169830.20683706
l1events	11116526

2.1.3 Events

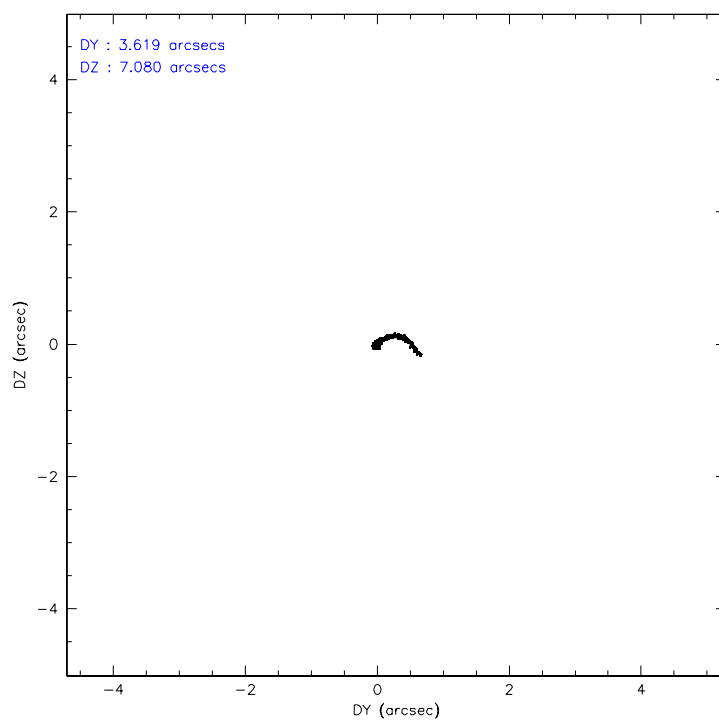
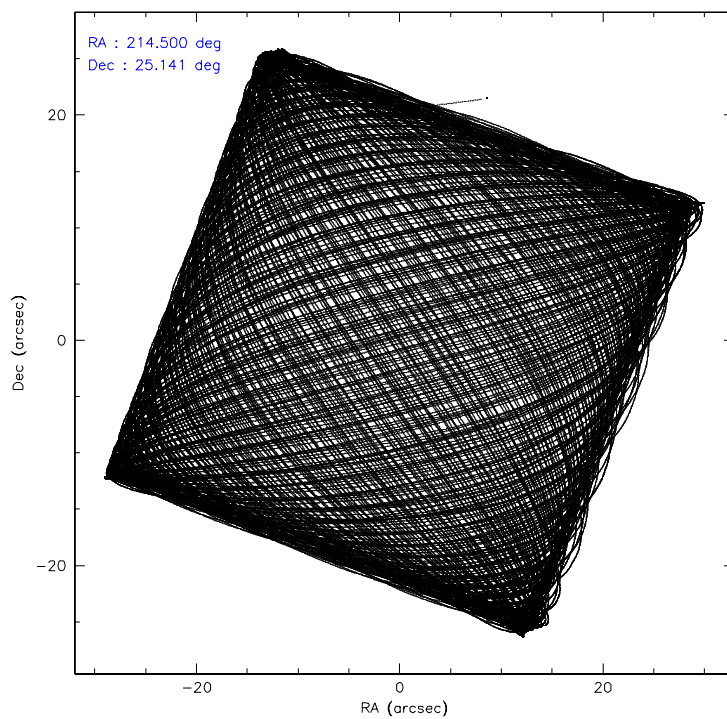
Level 1 Events

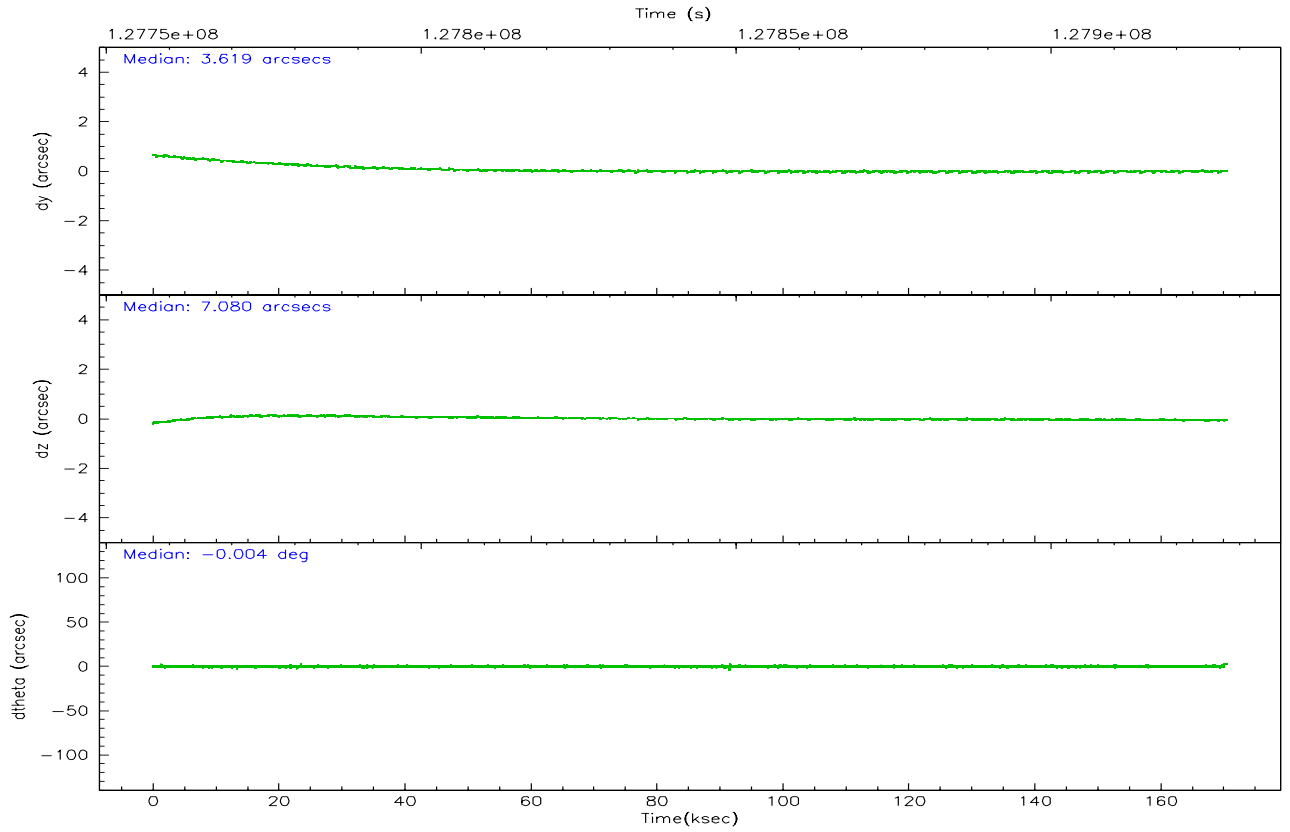
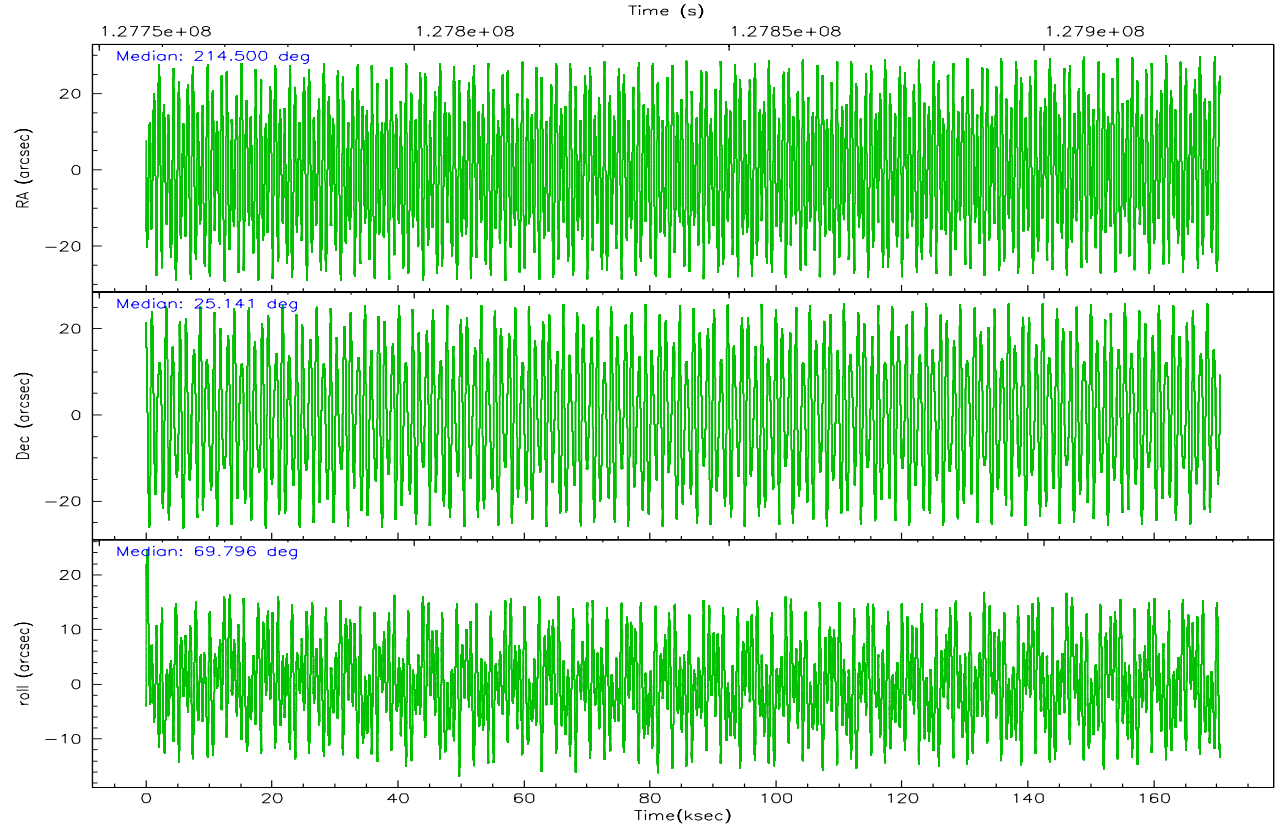
	segment 1	segment 2	segment 3
level 1 events	3709078	3731182	3676266
rejected events	787890	850491	968763
rejected %	21%	22%	26%

2.2 Compared Parameters

Parameter	Planned	Actual	Parameter	Planned	Actual
Instrument	HRC	HRC	Obspar format version number	6	6
Detector	HRC-S	HRC-S	Obspar file type	PREDICTED	ACTUAL
Grating	LETG	LETG	Obspar update status	NONE	UPDATED
Data mode	OBSERVING	OBSERVING			
Observation mode	POINTING	POINTING			
Pointing RA	214.507167	214.50028177887			
Pointing Dec	25.113214	25.14114833282374			
Pointing Roll	69.732284	69.80253964697989			
SIM focus pos (mm)	-1.429586	-1.428180813131781			
SIM defocus (mm)	0.1037507710433287	0.1051558262725154			
SIM translation stage pos (mm)	250.455976	250.466033080201			
SIM translation stage offset (mm)	0	-0.01005468664627074			
Observation start time	127757598.184000	127756686.19821			
Observation start date	2002-01-18T16:12:14	2002-01-18T15:58:06			
Observation end time	127927097.184000	127928667.88013			
Observation end date	2002-01-20T15:17:13	2002-01-20T15:44:27			

2.3 Aspect



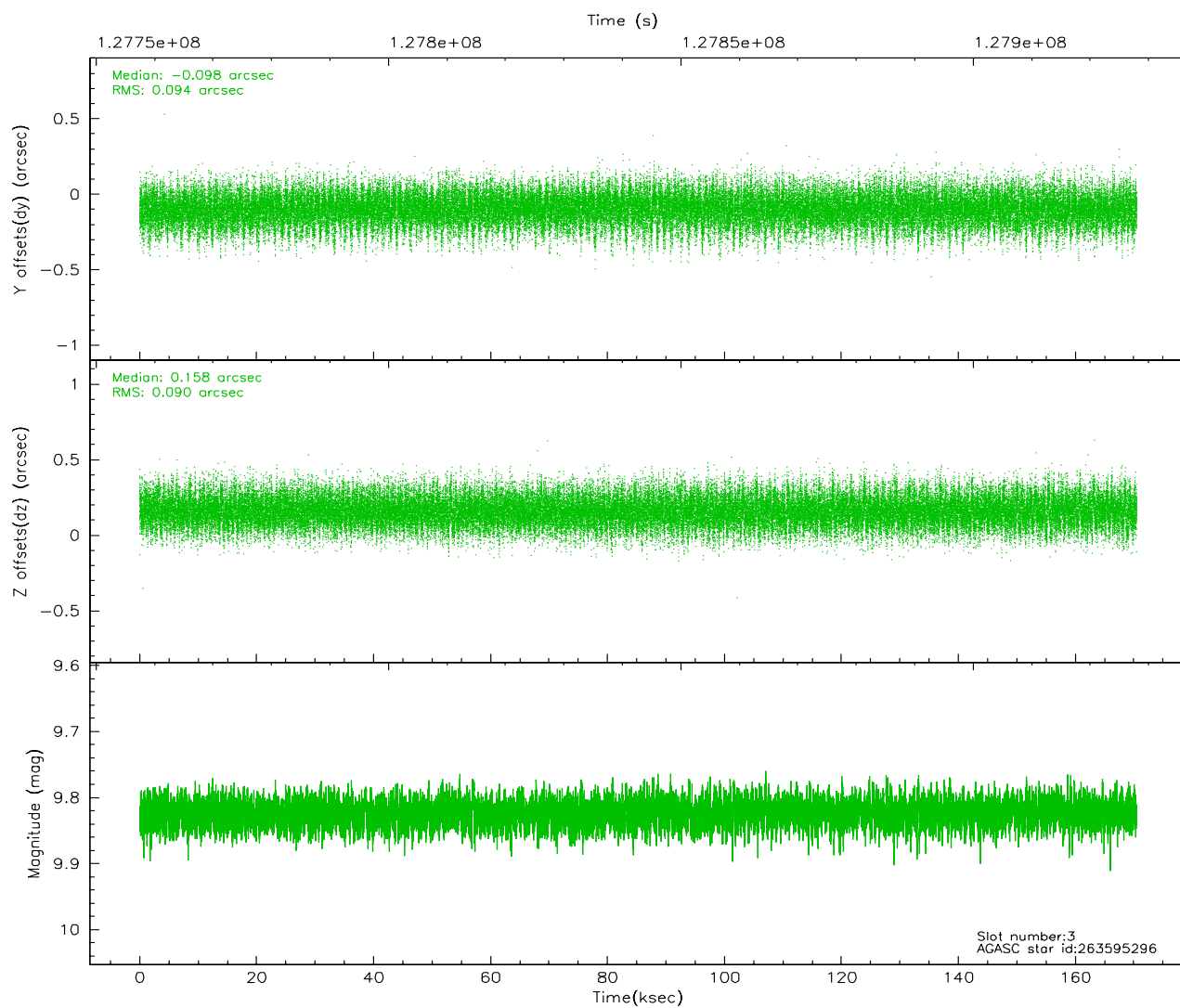
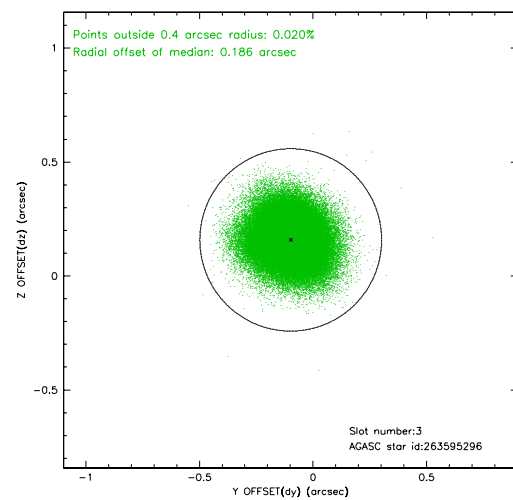
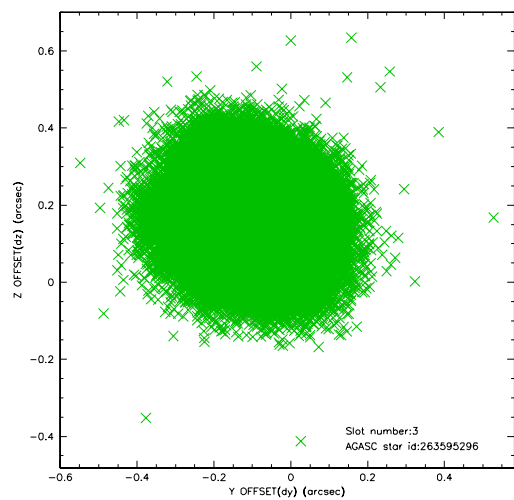


Slot Statistics

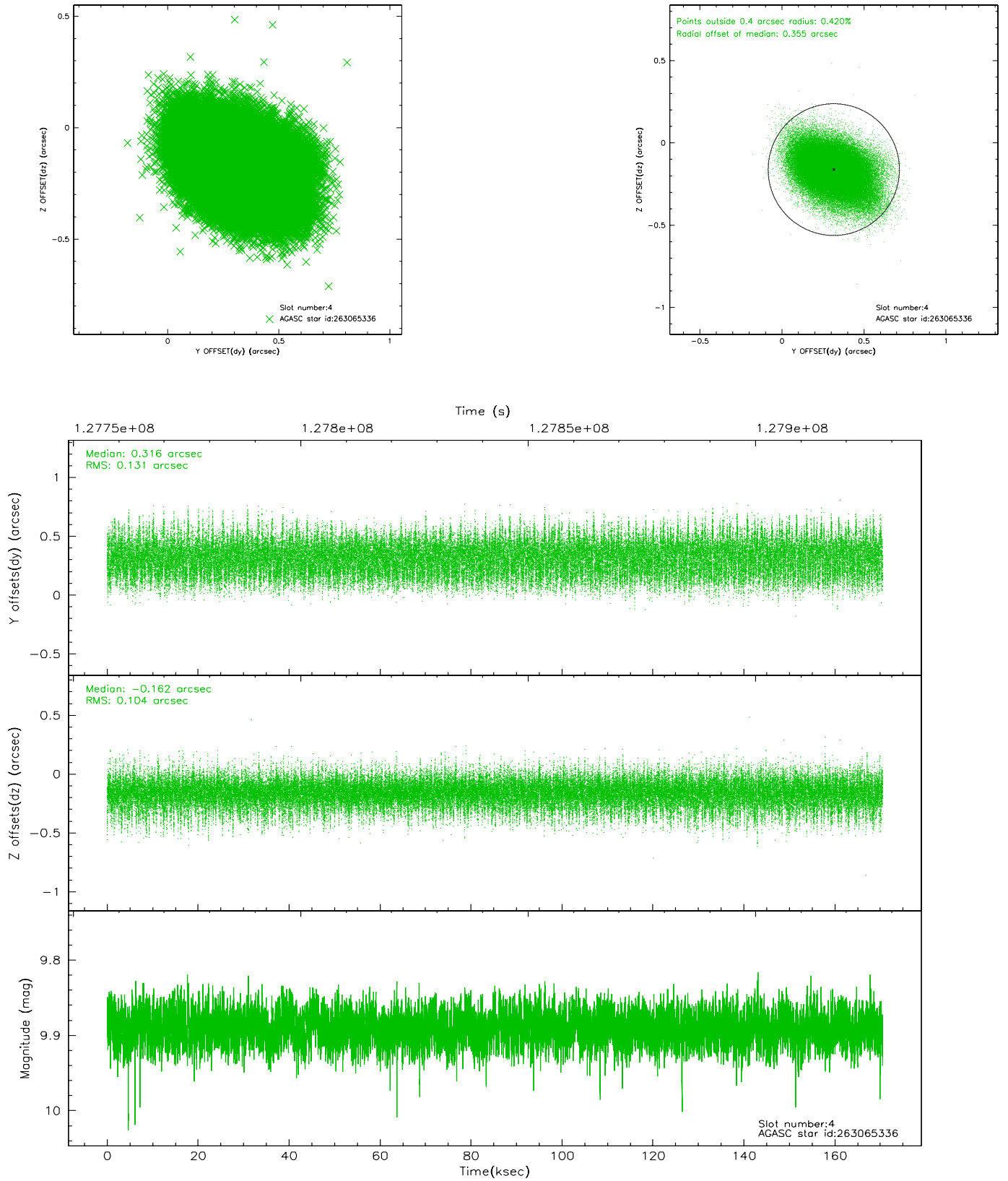
slot	status	id	mag	n_pts	med_dy	med_dz	dr1	dr2	ra	dec	mean_y	mean_z
0	FID	HRC-S-1	6.97	41495	0.152	-0.092	0.007	0.011	0.000000	0.000000	-1157.73	-455.62
1	FID	HRC-S-2	6.97	41494	0.081	-0.089	0.005	0.010	0.000000	0.000000	1241.85	-448.26
2	FID	HRC-S-3	7.00	41492	0.157	-0.121	0.007	0.012	0.000000	0.000000	-1160.42	573.87
3	GUIDE	263595296	9.82	83133	-0.098	0.158	0.140	0.226	214.929889	25.645337	2274.50	-622.72
4	GUIDE	263065336	9.89	82840	0.316	-0.162	0.175	0.295	213.680541	24.784994	-2036.37	2127.19
5	GUIDE	263464056	8.77	83138	-0.140	-0.210	0.080	0.126	214.109118	25.652451	1375.22	1884.42
6	GUIDE	263195064	9.28	83078	0.018	0.235	0.126	0.212	215.129983	24.745063	-532.99	-2367.88
7	GUIDE	263462424	8.91	83167	-0.091	-0.022	0.077	0.126	214.158904	25.947326	2427.71	2098.19

2.4 Star Slots

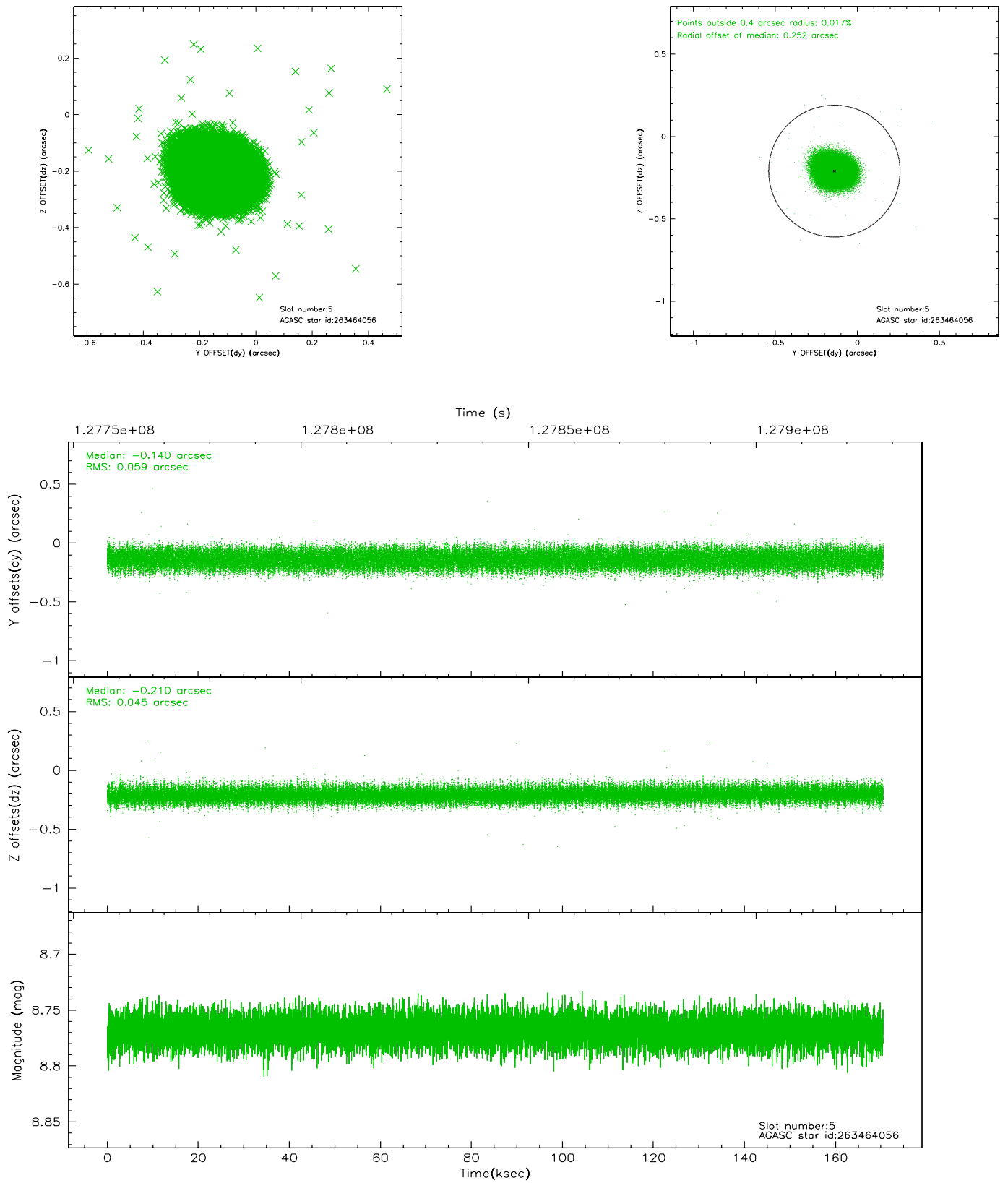
2.4.1 Slot 3



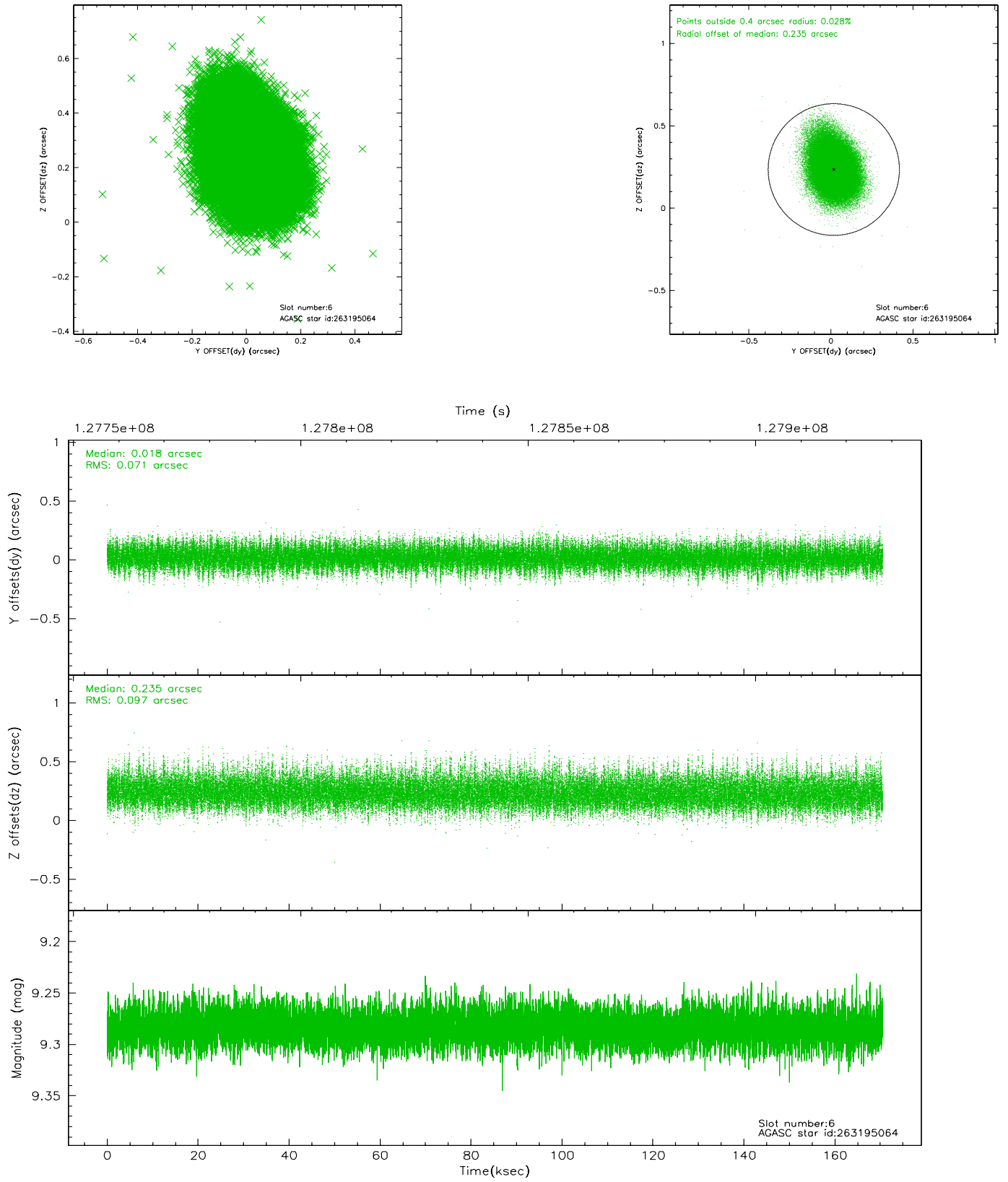
2.4.2 Slot 4



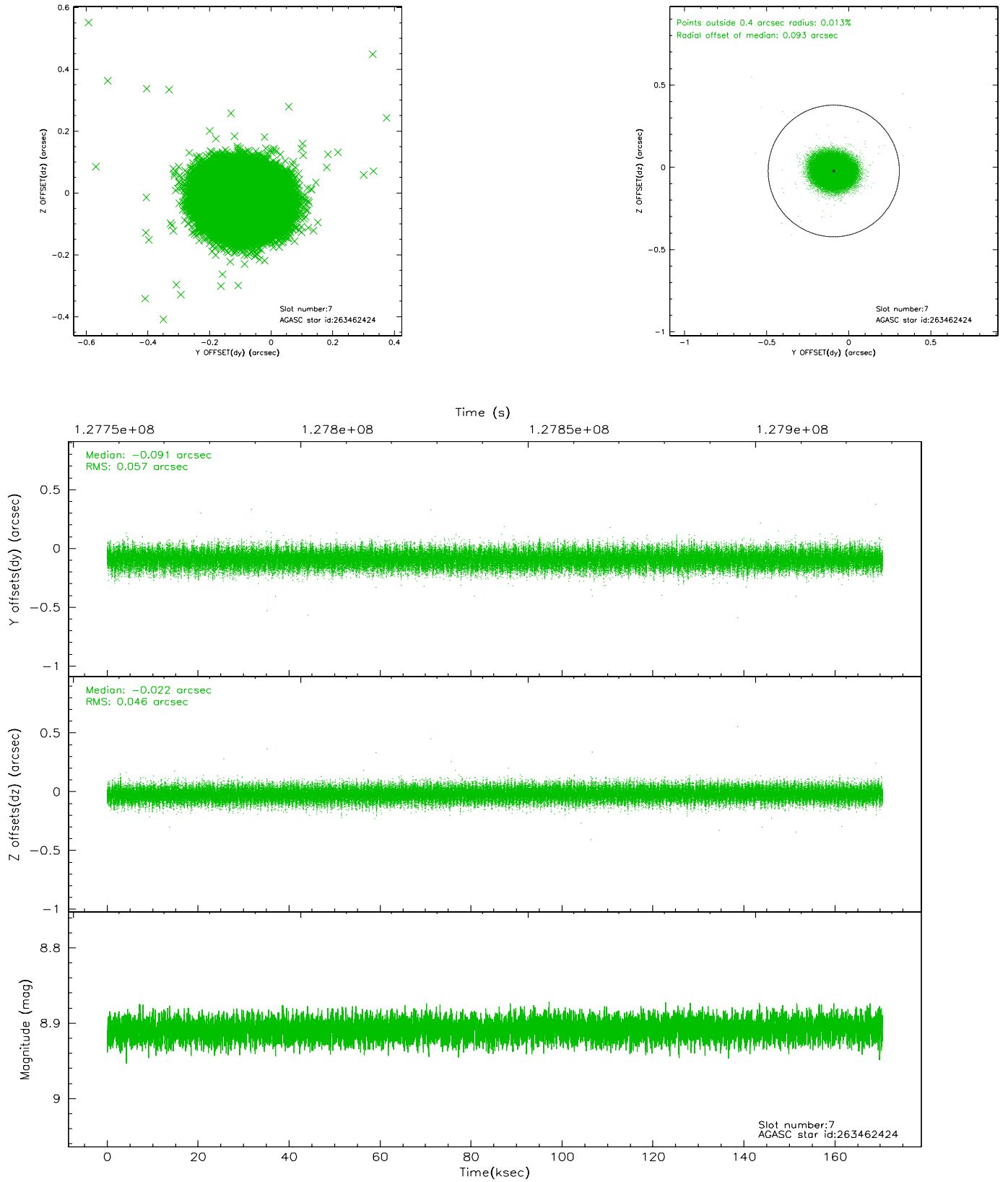
2.4.3 Slot 5



2.4.4 Slot 6

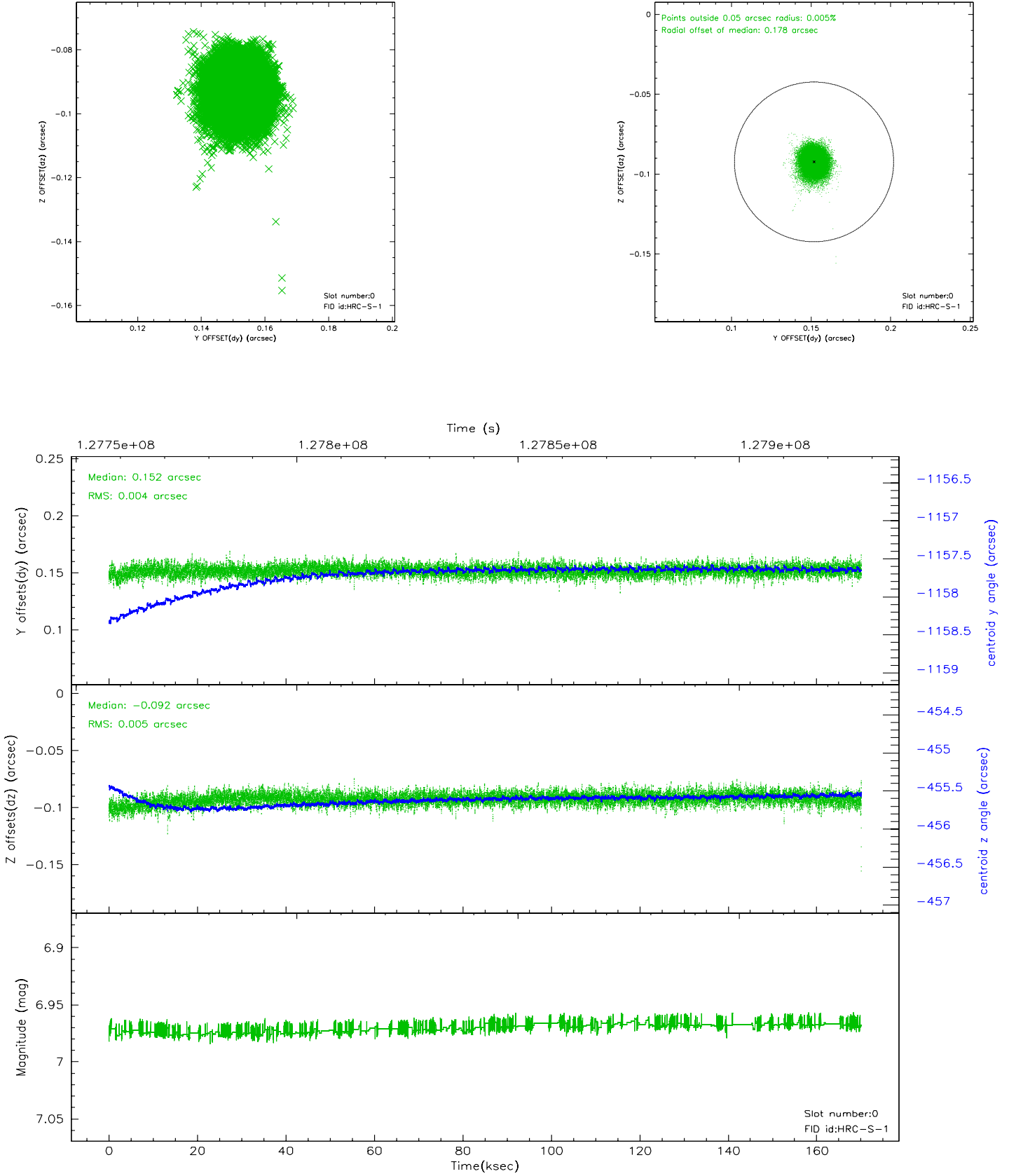


2.4.5 Slot 7

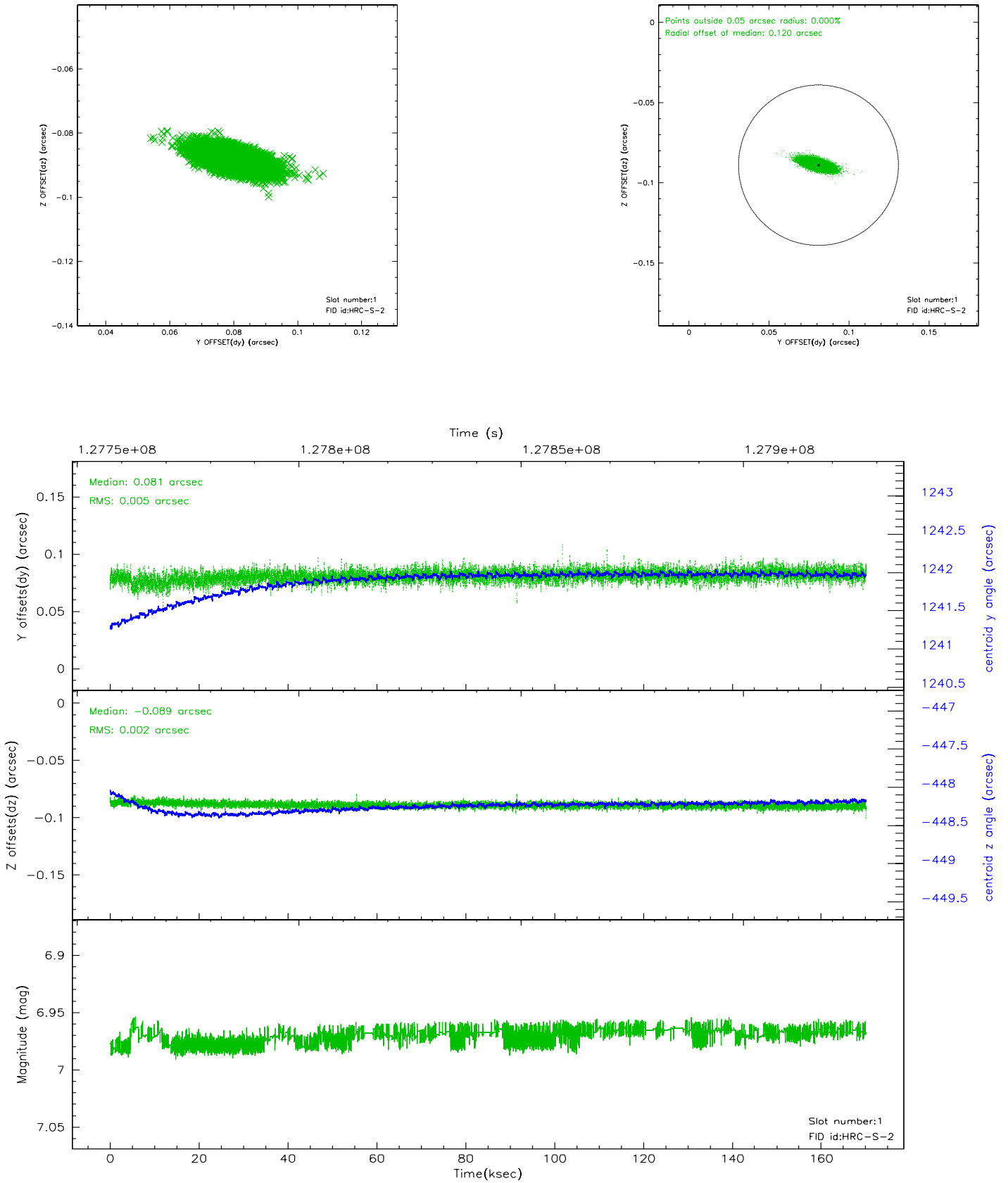


2.5 FID Slots

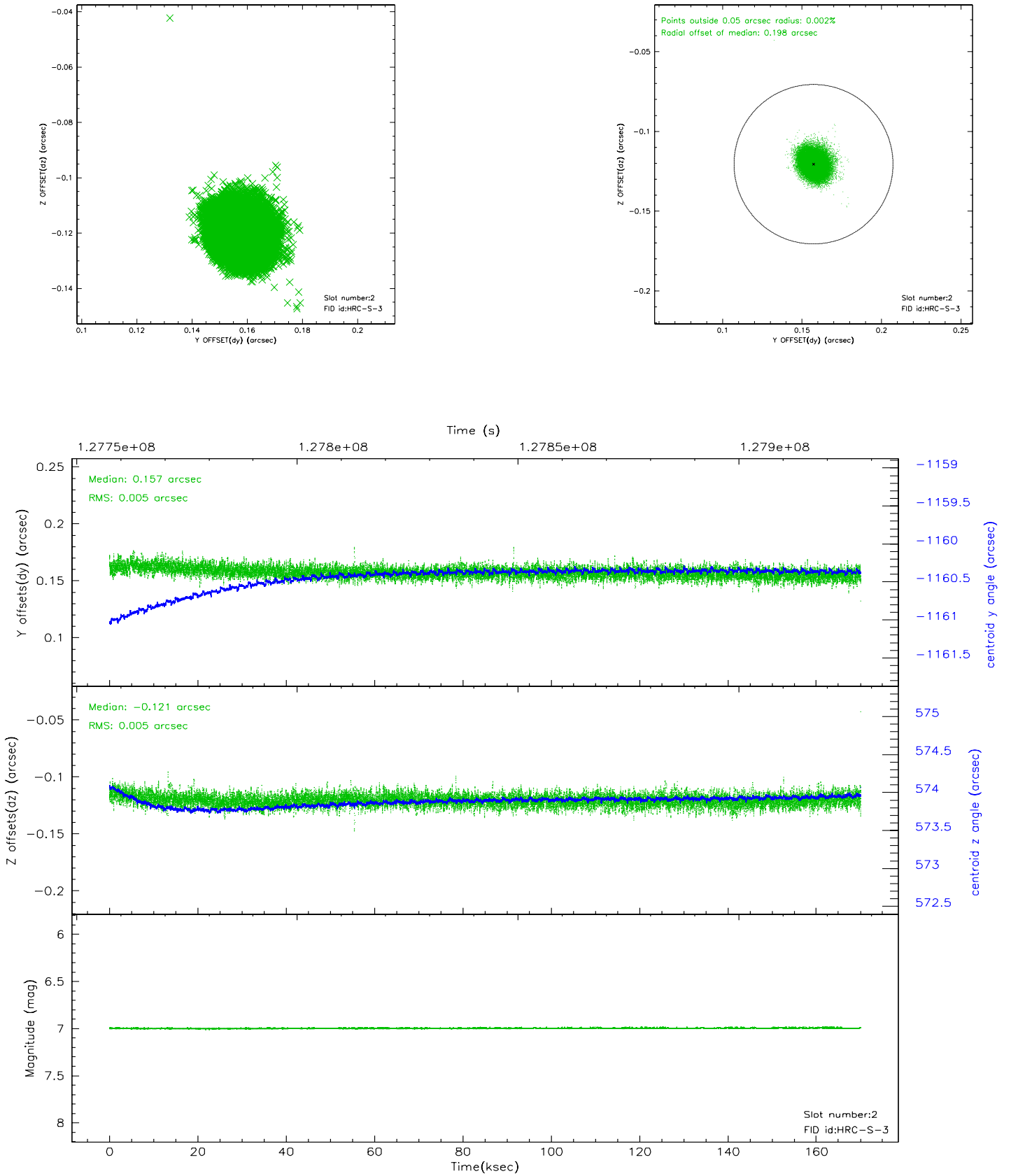
2.5.1 Slot 0



2.5.2 Slot 1

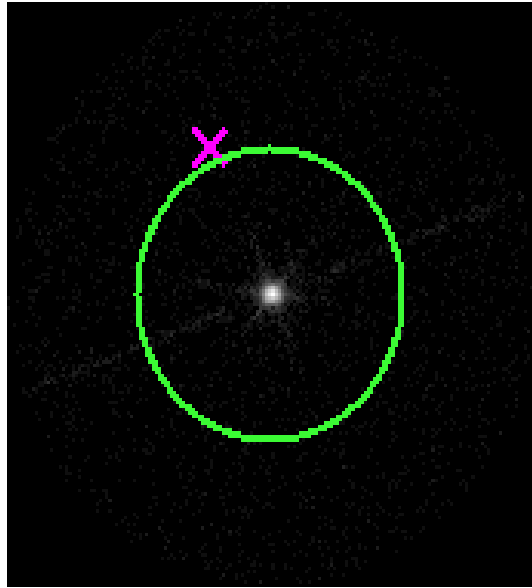


2.5.3 Slot 2



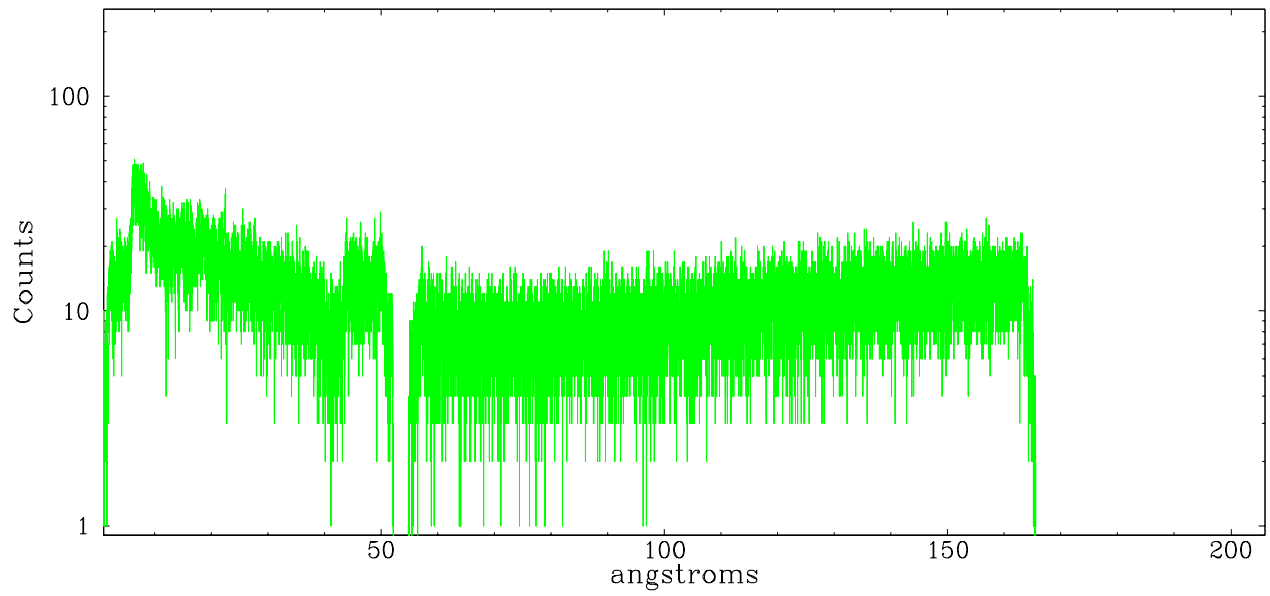
3 Gratings

3.1 LETG Arm

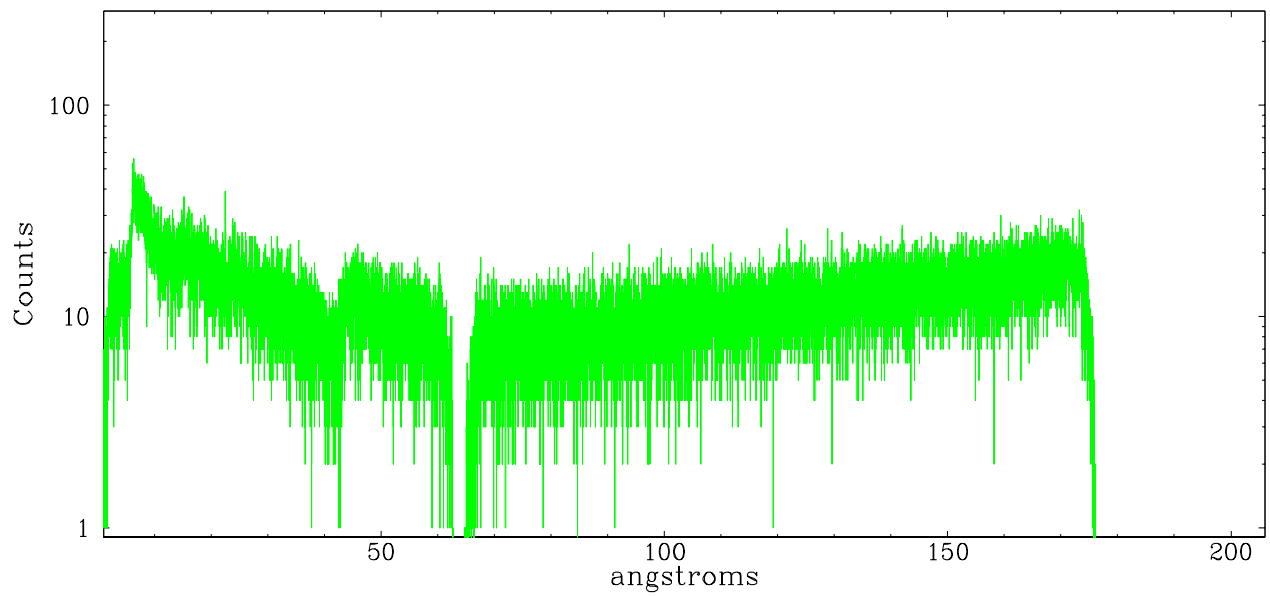


LETG Zero Order

leg order -1



leg order +1



A Summary

A.1 Status

V&V Scientist	Beth Sundheim
V&V Date (YYYY-MM-DD)	2006.08.29
V&V Edition	1
V&V Disposition and Status	OK
V&V Charge Time	169.676

A.2 Comments