

V&V Reference Report

L2 ASCDS Version : 8.4.5

Observation 3005 - L2 Version 4
Chandra X-Ray Center

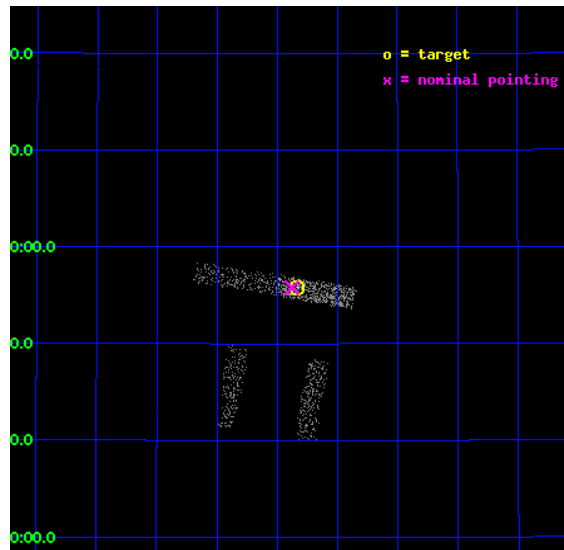
L2 Processing Date : Oct 16 2012

Contents

1	Front	2
2	OBI	3
2.1	OBI	3
2.1.1	Images	3
2.1.2	Bias	3
2.1.3	Parameters	4
2.1.4	Events	4
2.2	Compared Parameters	5
2.3	Aspect	6
2.4	Star Slots	9
2.4.1	Slot 3	9
2.4.2	Slot 4	10
2.4.3	Slot 5	11
2.4.4	Slot 6	12
2.4.5	Slot 7	13
2.5	FID Slots	14
2.5.1	Slot 0	14
2.5.2	Slot 1	15
2.5.3	Slot 2	16
A	Summary	17
A.1	Status	17
A.2	Comments	17

1 Front

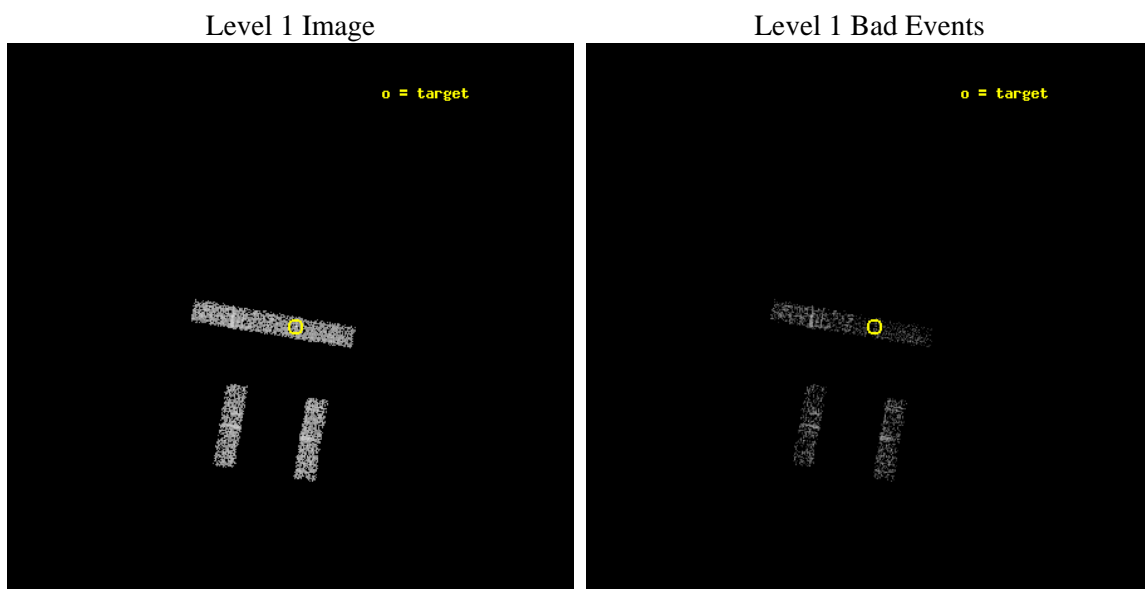
seq_num	700444	Sequence number
obs_id	3005	Observation id
title	CHANDRA SNAPSHOT OBSERVATIONS OF SOFT X-RAY TRANSIENT AGN	Proposal
observer	Dr Rick Edelson	Principal investigator
object	MRK 663	Source name
dtcycle	0	
cycle	P	events from which exps? Prim/Second/Both
ra_targ	208.582917	Observer's specified target RA [deg]
dec_targ	32.929722	Observer's specified target Dec [deg]
ra_nom	208.59461896361	Nominal RA [deg]
dec_nom	32.929528638706	Nominal Dec [deg]
roll_nom	9.4625372752883	Nominal Roll [deg]
revision	4	Processing version of data
ontime	2605.25	Sum of GTIs [s]
livetime	433.5724271069	Livetime [s]
ontime2	2605.25	Sum of GTIs [s]
ontime3	2605.25	Sum of GTIs [s]
ontime6	2605.25	Sum of GTIs [s]
ontime7	2605.25	Sum of GTIs [s]
l2events	1517	Number of level 2 events



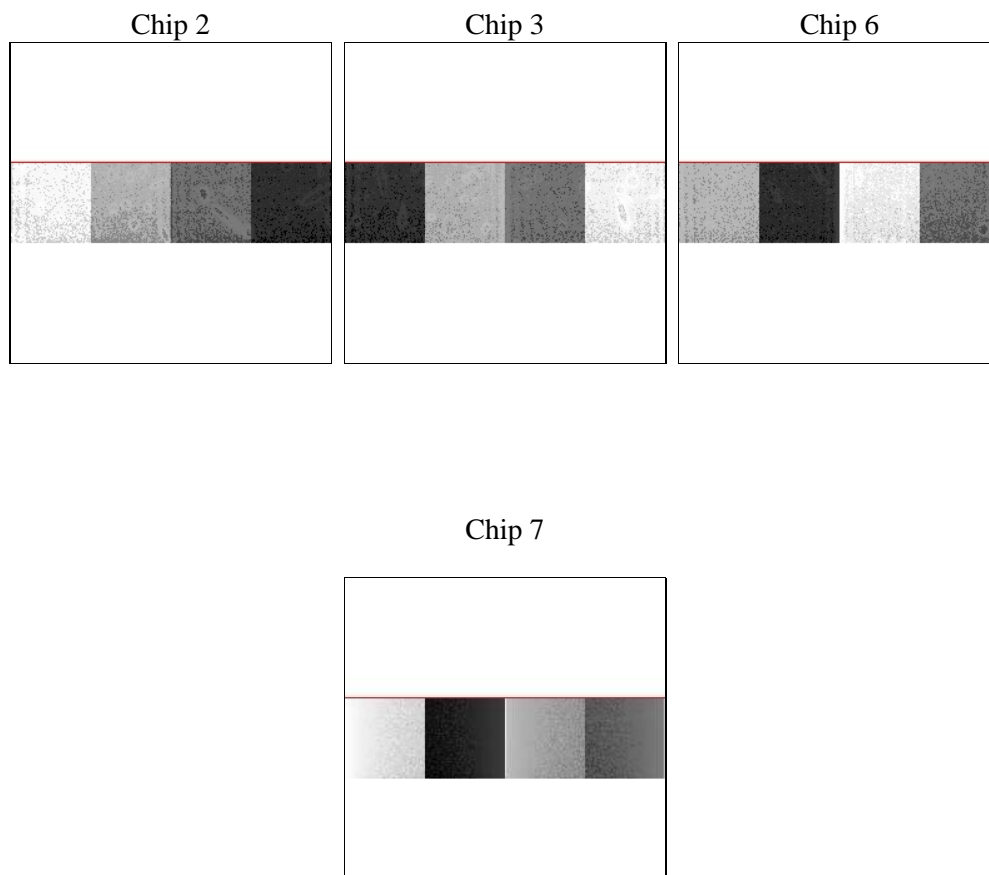
2 OBI

2.1 OBI

2.1.1 Images



2.1.2 Bias



2.1.3 Parameters

obi_num	2	Obi number	sched_exp_time	2000.000000	[s] Scheduled observation exposure time
ascdsver	8.4.5	Processing system revision	ontime	2605.25	Sum of GTIs [s]
caldsver	4.5.2	 	ontime2	2605.25	Sum of GTIs [s]
date	2012-10-17T00:06:59	Date and time of file creation	ontime3	2605.25	Sum of GTIs [s]
revision	4	Processing version of data	ontime6	2605.25	Sum of GTIs [s]
			ontime7	2605.25	Sum of GTIs [s]
			l1events	11764	Number of level 1 events

2.1.4 Events

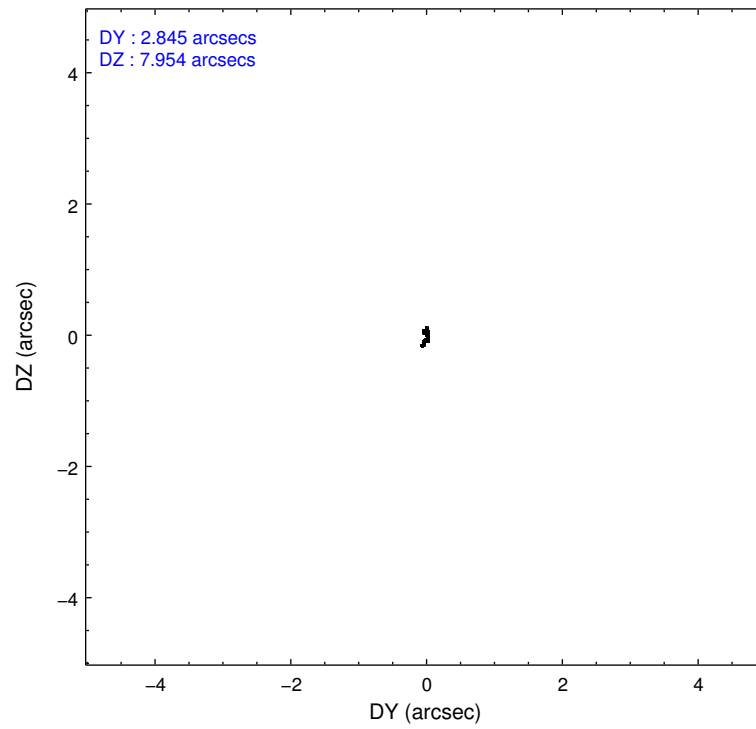
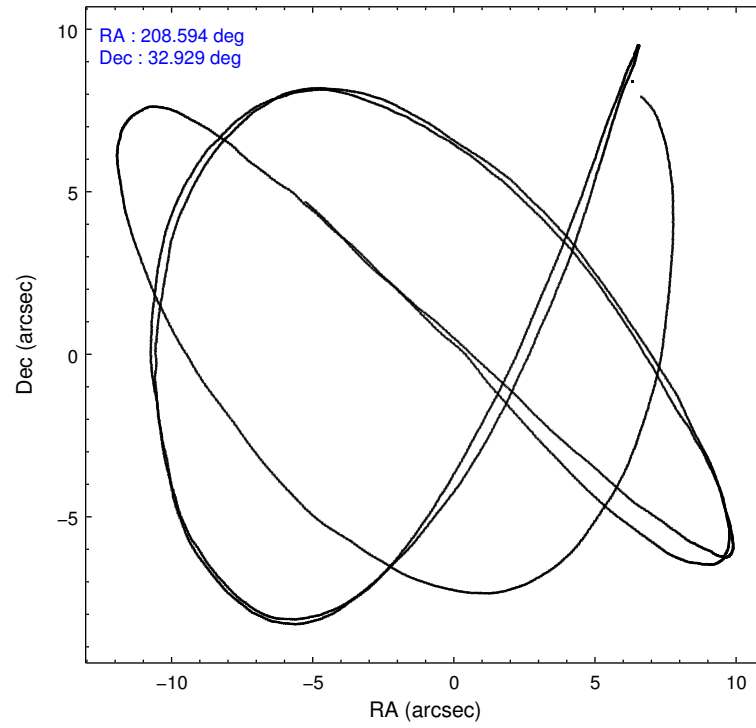
	ccd 2	ccd 3	ccd 6	ccd 7
level 1 events	2782	3165	3435	2382
rejected events	2511	2836	3117	1507
rejected %	90%	89%	90%	63%

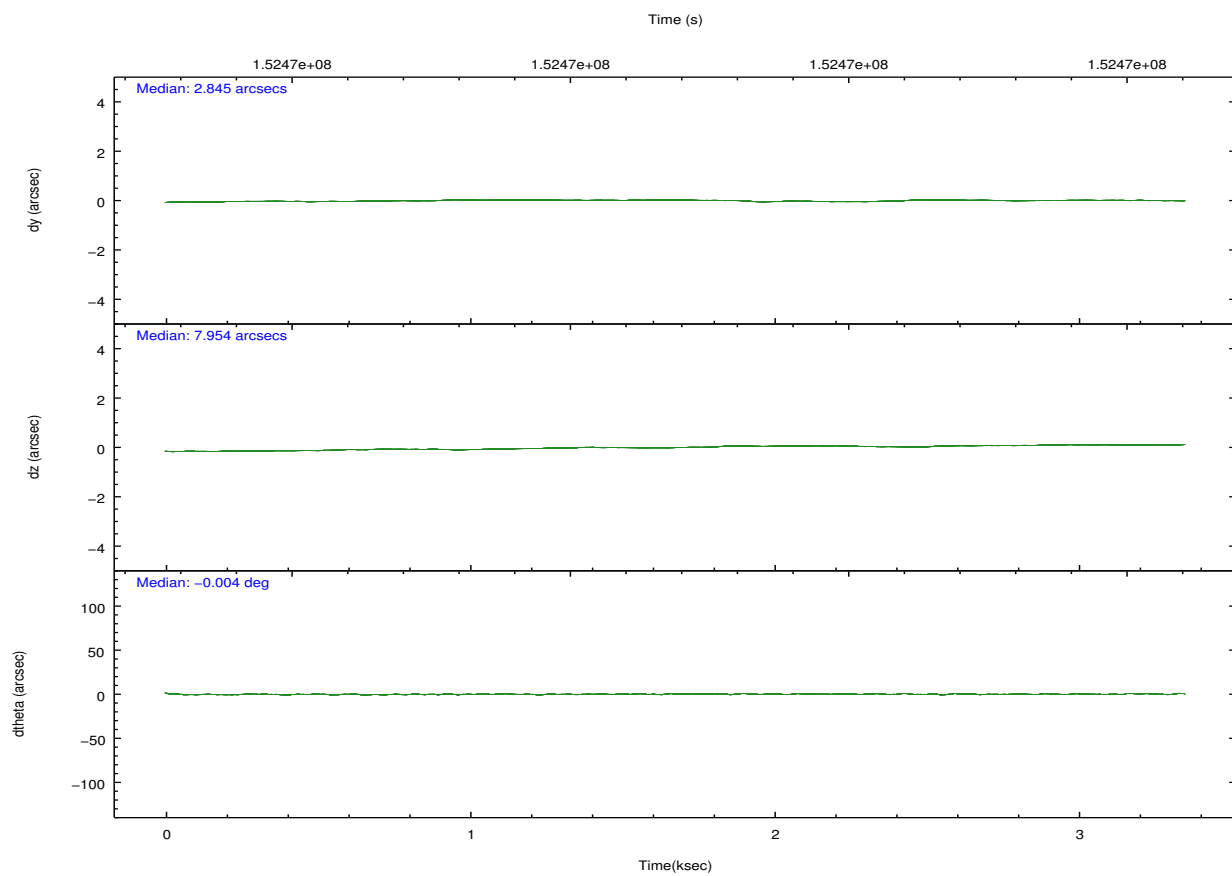
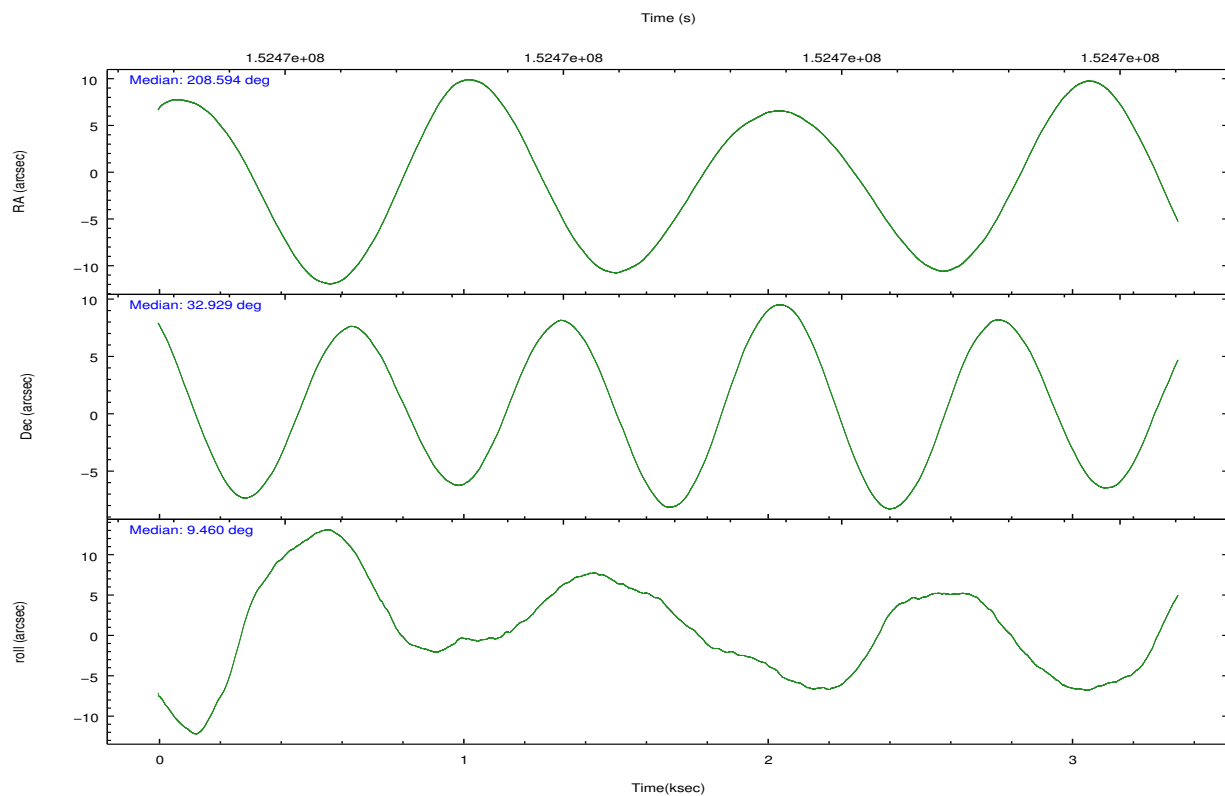
	ccd 2	ccd 3	ccd 6	ccd 7
grade 0 events	70	92	78	121
	2%	2%	2%	5%
grade 1 events	0	1	2	2
	0%	0%	0%	0%
grade 2 events	47	63	56	181
	1%	1%	1%	7%
grade 3 events	51	73	68	120
	1%	2%	1%	5%
grade 4 events	48	54	62	85
	1%	1%	1%	3%
grade 5 events	40	66	87	180
	1%	2%	2%	7%
grade 6 events	55	48	54	368
	1%	1%	1%	15%
grade 7 events	2471	2768	3028	1325
	88%	87%	88%	55%

2.2 Compared Parameters

Parameter	Planned	Actual	Parameter	Planned	Actual
Instrument	ACIS	ACIS	Obspar format version number	7	7
Detector	ACIS-2367	ACIS-2367	Obspar file type	PREDICTED	ACTUAL
Grating	NONE	NONE	Obspar update status	NONE	UPDATED
Data mode	FAINT	FAINT	Number of optional ACIS chips dropped	0	0
Observation mode	POINTING	POINTING	On-chip summing requested	N	N
[deg] Pointing RA	208.569672	208.5946189636126	Subarray requested	CUSTOM	1/4
[deg] Pointing Dec	32.912023	32.92952863870556	Subarray start row	385	385
[deg] Pointing Roll	9.319500	9.462537275288332	Subarray row count	256	256
[mm] SIM focus pos	-0.684267	-0.6828225247311905	Alternating exposures requested	N	N
[mm] SIM defocus	0	0.001444936568705701	[s] Primary exposure time	0.000000	0.2
[mm] SIM translation stage pos	-190.132523	-190.1425803651734			
[mm] SIM translation stage offset	0	0.01005778216563158			
[s] Observation start time (MET)	152470051.184000	152468505.48398			
Observation start date	2002-10-31T16:46:27	2002-10-31T16:21:45			
[s] Observation end time (MET)	152472051.184000	152472513.23414			
Observation end date	2002-10-31T17:19:47	2002-10-31T17:28:33			
Read mode	TIMED	TIMED			

2.3 Aspect



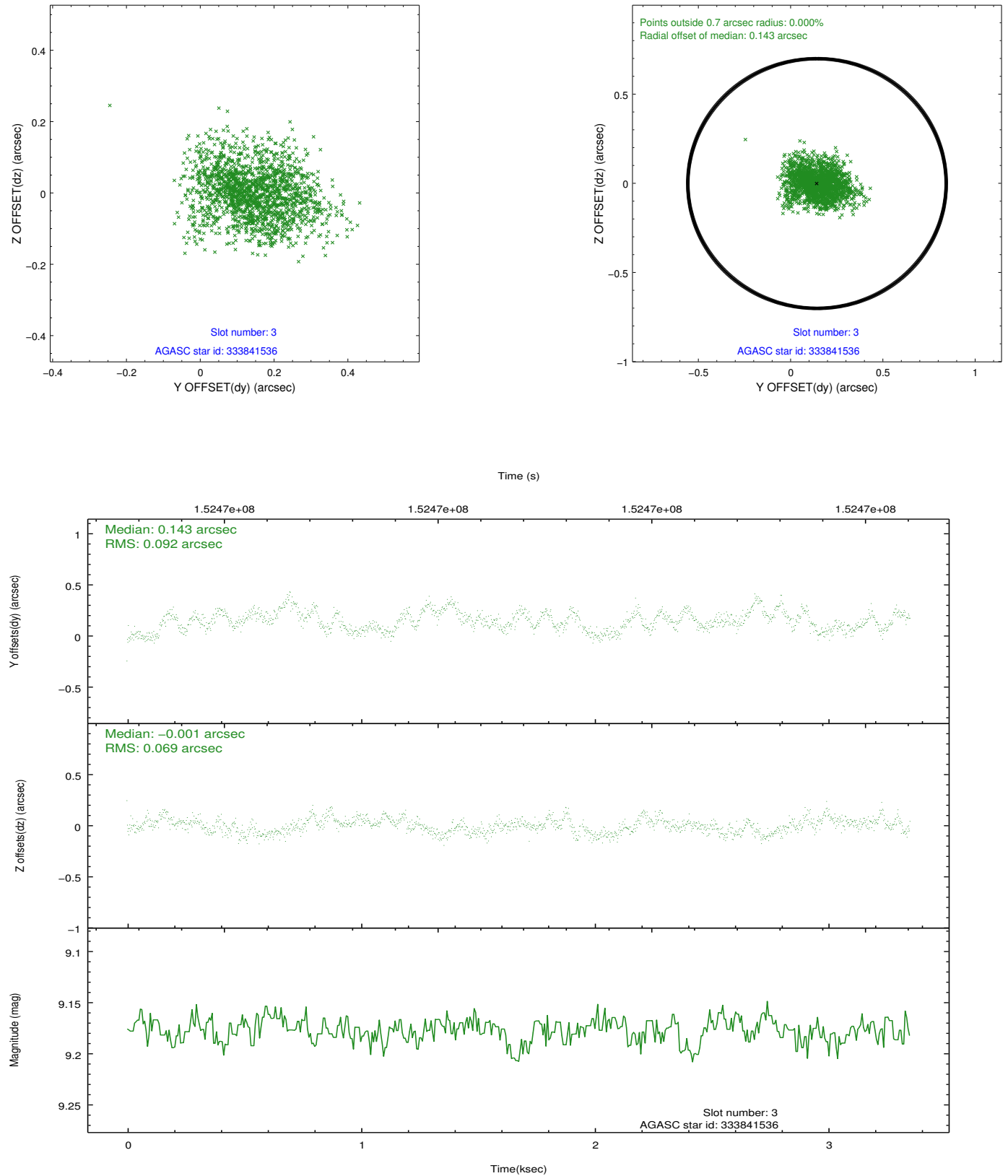


Slot Statistics

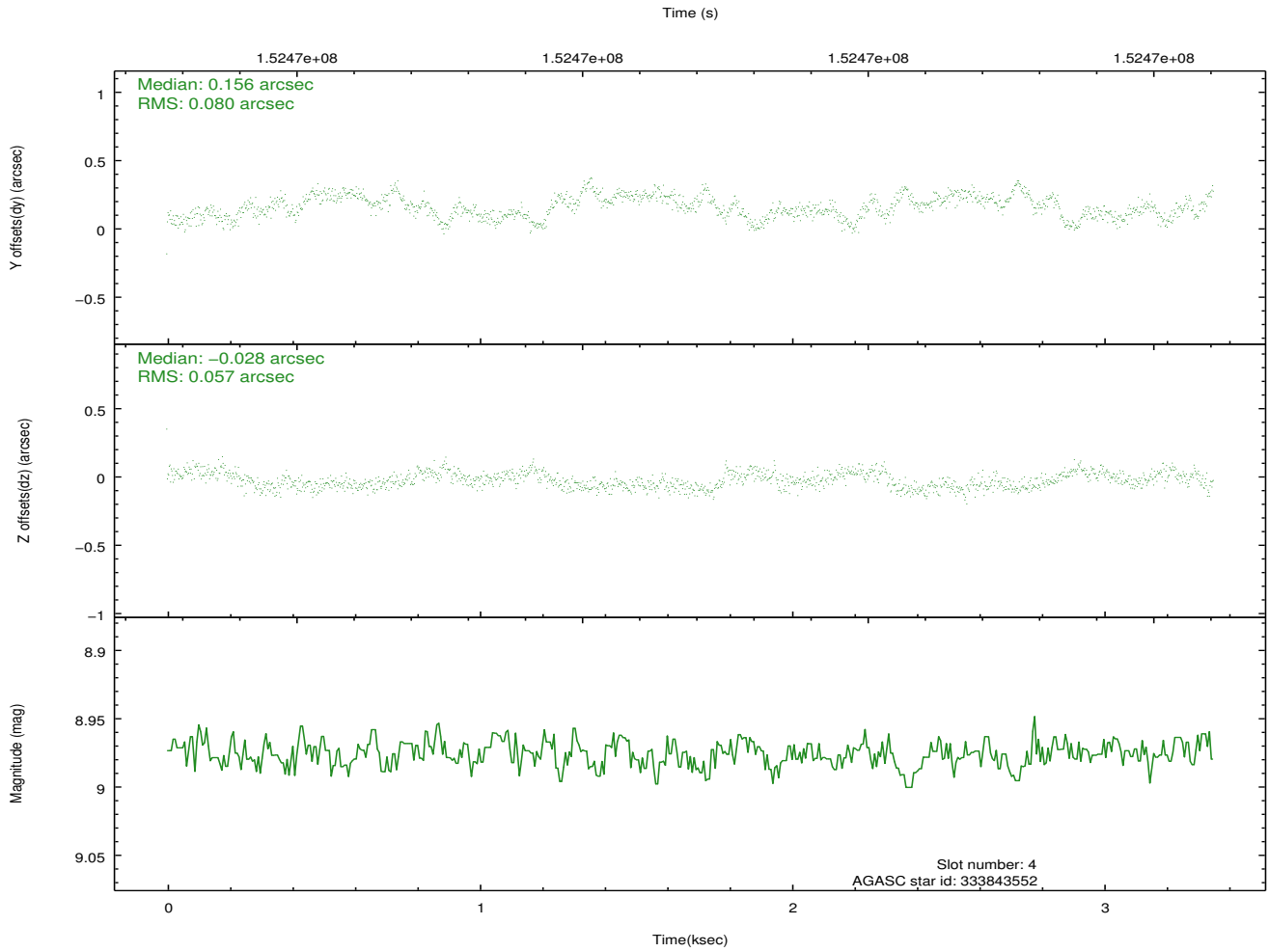
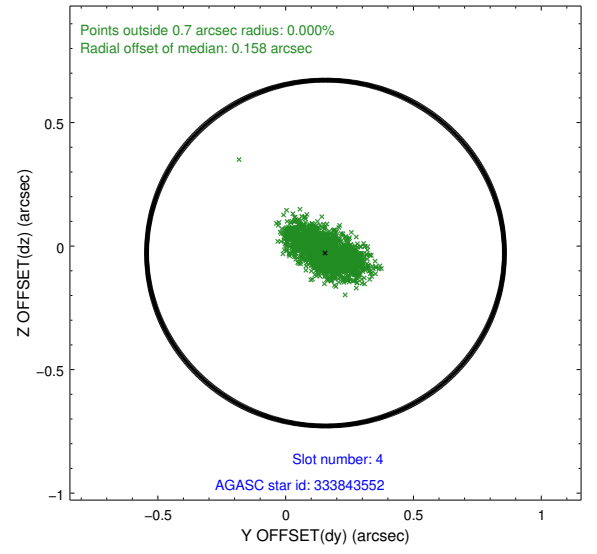
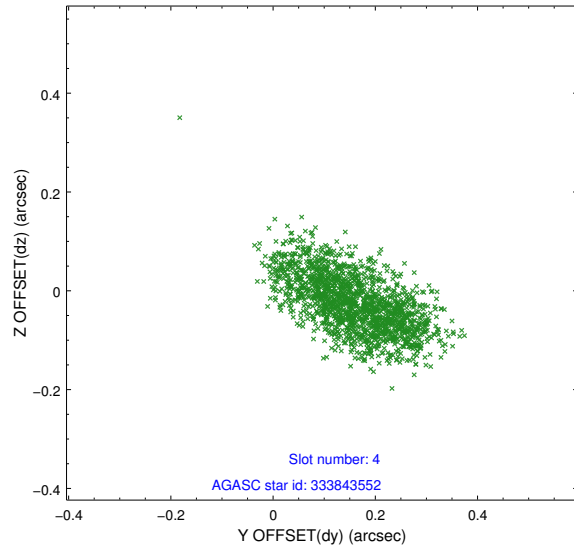
slot	status	id	mag	n_pts	med_dy	med_dz	dr1	dr2	ra	dec	mean_y	mean_z
0	FID	ACIS-S-2	7.11	818	-0.003	0.002	0.007	0.011	0.000000	0.000000	-755.49	-1729.07
1	FID	ACIS-S-4	7.20	818	-0.024	0.001	0.006	0.010	0.000000	0.000000	2156.93	177.43
2	FID	ACIS-S-5	7.24	817	-0.003	0.006	0.006	0.011	0.000000	0.000000	-1805.88	173.29
3	GUIDE	333841536	9.18	1632	0.143	-0.001	0.125	0.195	207.736517	33.263675	-2267.54	1665.47
4	GUIDE	333843552	8.98	1634	0.156	-0.028	0.105	0.167	207.943128	33.286944	-1641.90	1644.10
5	GUIDE	333843816	9.56	1634	0.070	-0.208	0.101	0.164	208.078015	32.856933	-1499.04	49.54
6	GUIDE	333848744	8.92	1636	-0.191	0.147	0.108	0.161	209.384333	32.808665	2373.18	-756.41
7	GUIDE	333848960	10.12	1635	-0.152	0.110	0.302	0.467	208.878999	32.756079	835.37	-704.32

2.4 Star Slots

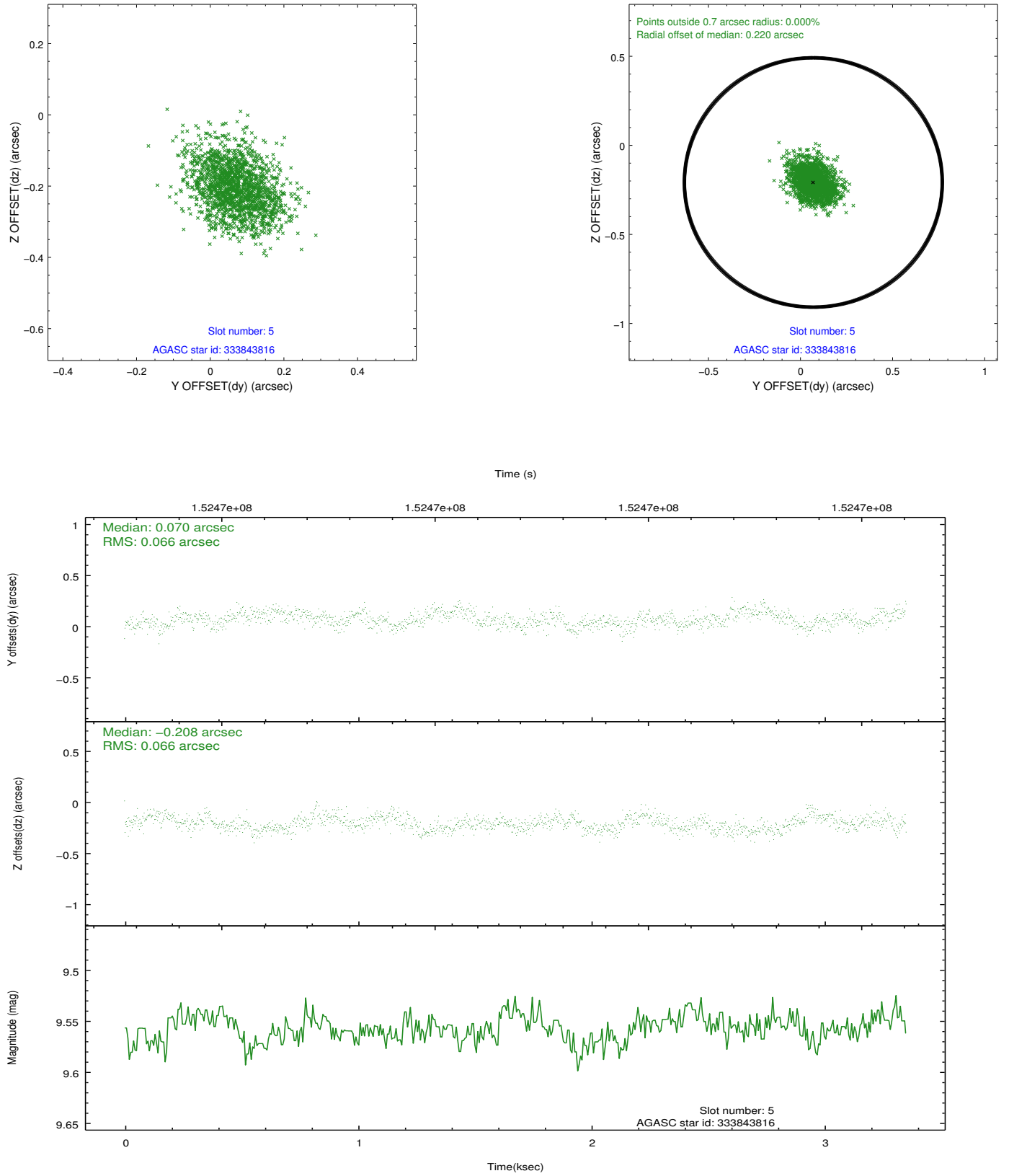
2.4.1 Slot 3



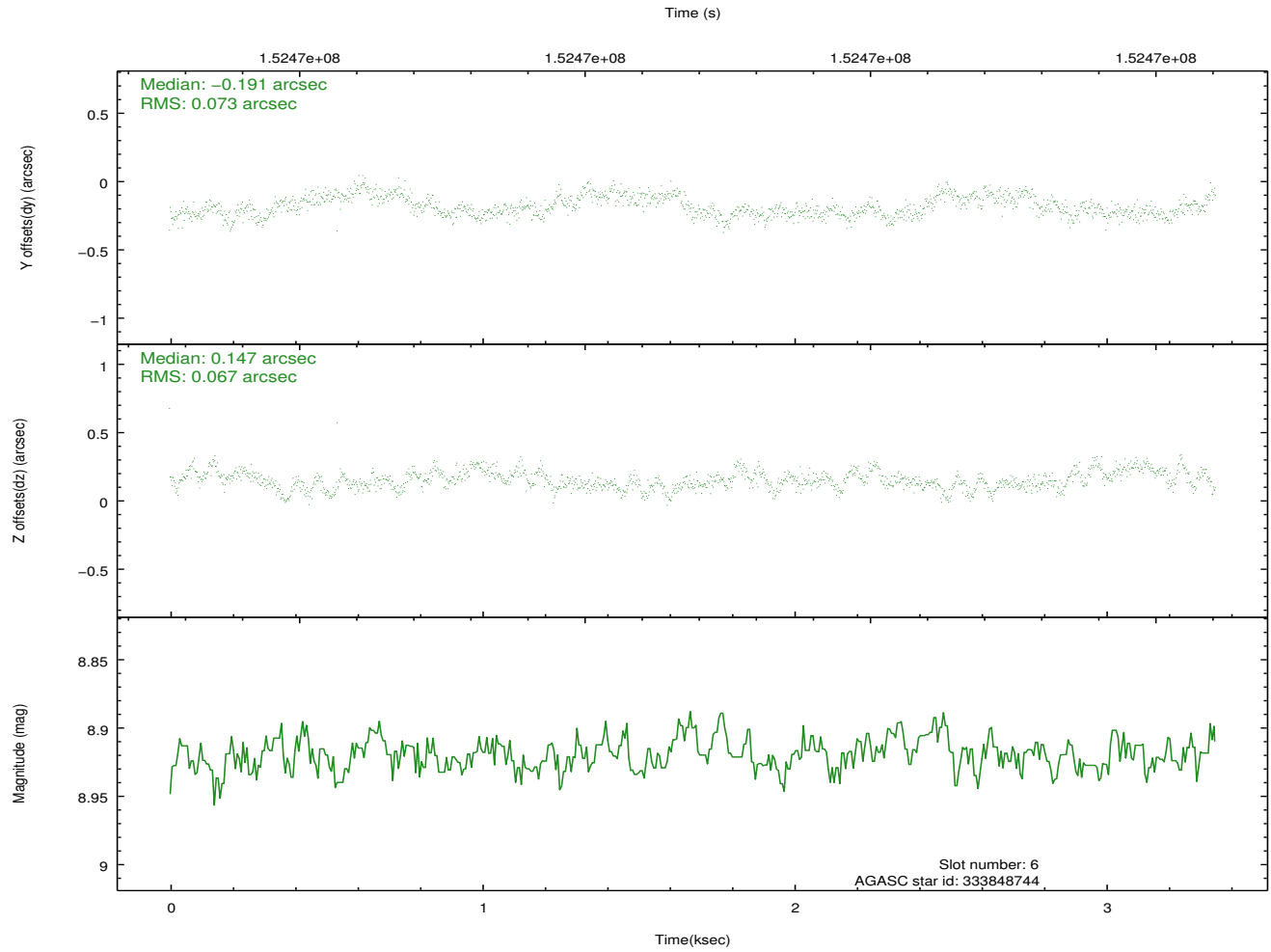
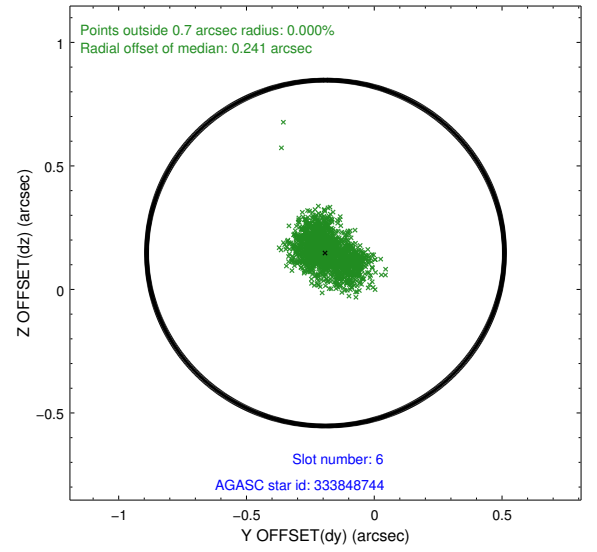
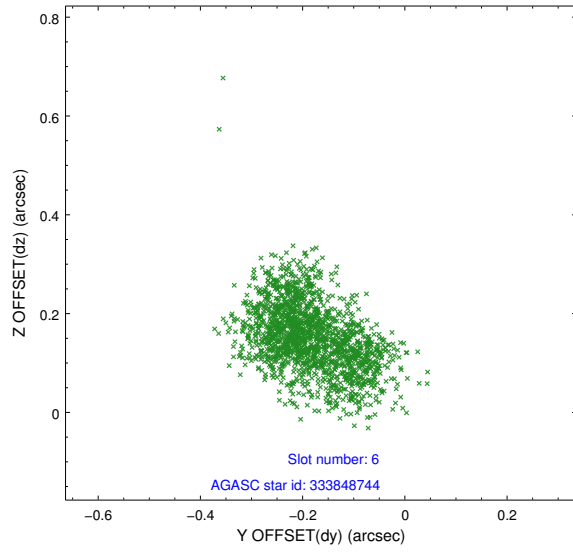
2.4.2 Slot 4



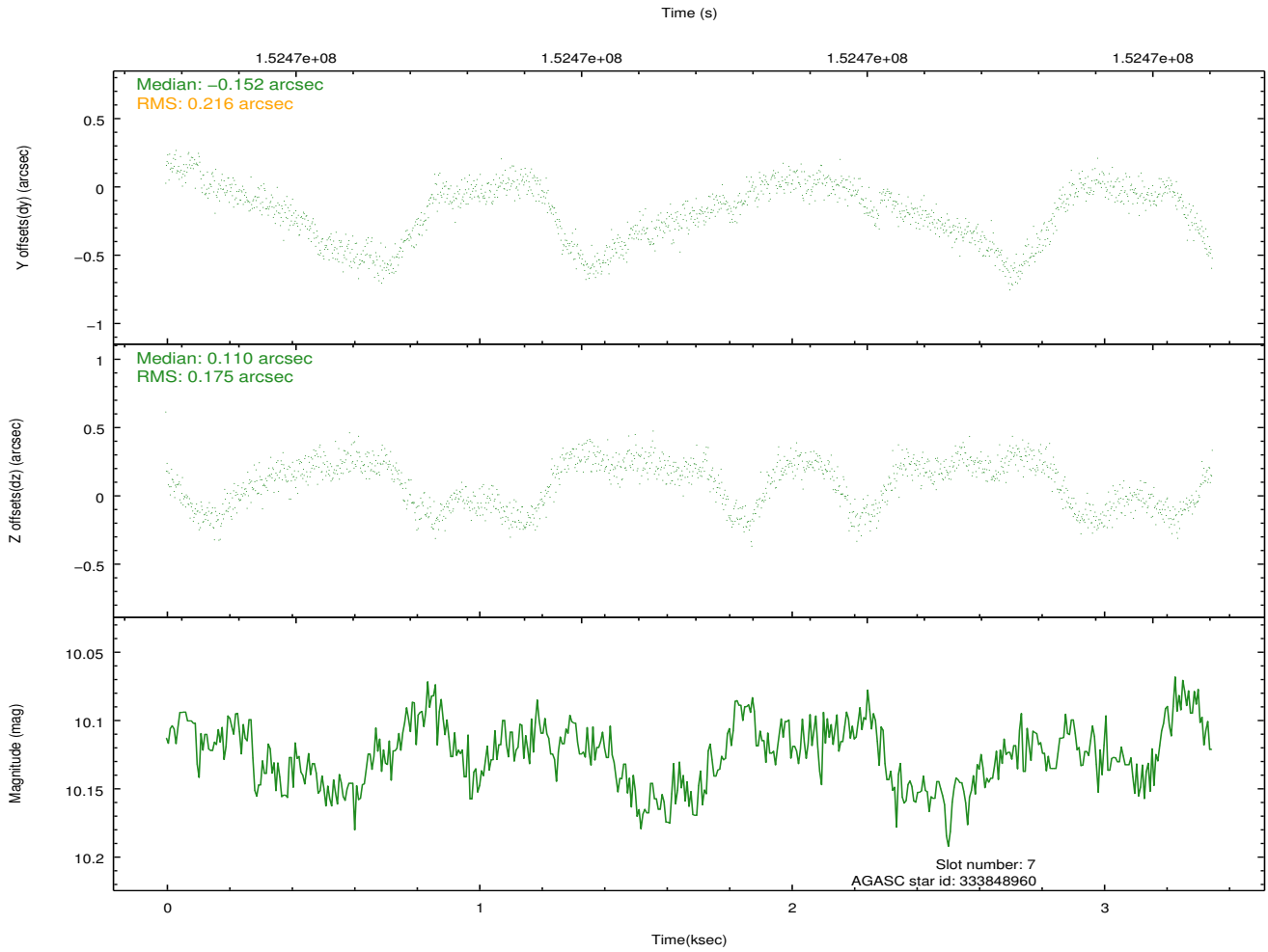
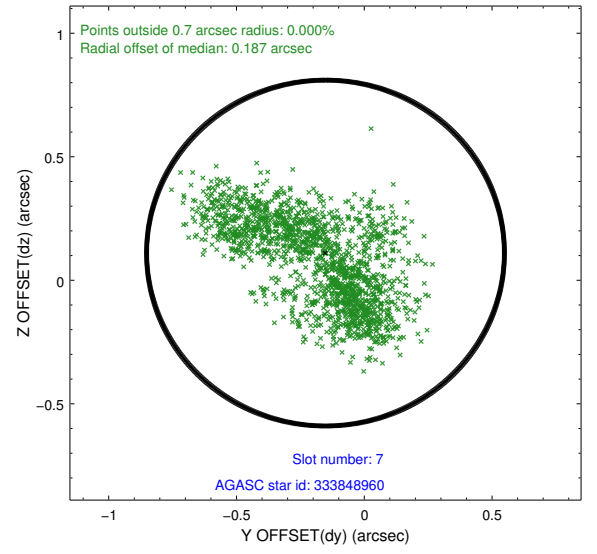
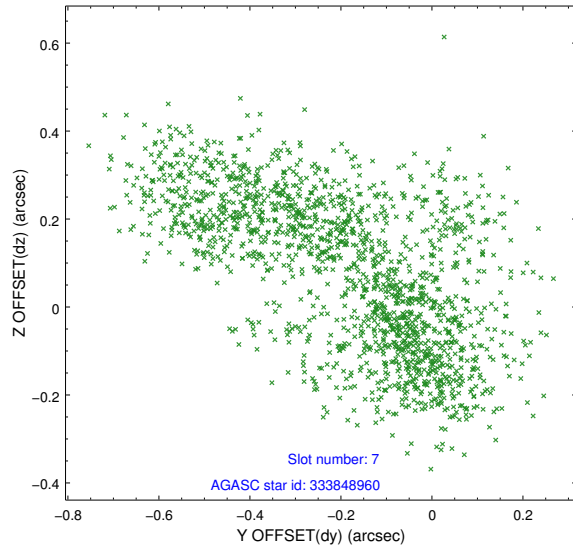
2.4.3 Slot 5



2.4.4 Slot 6

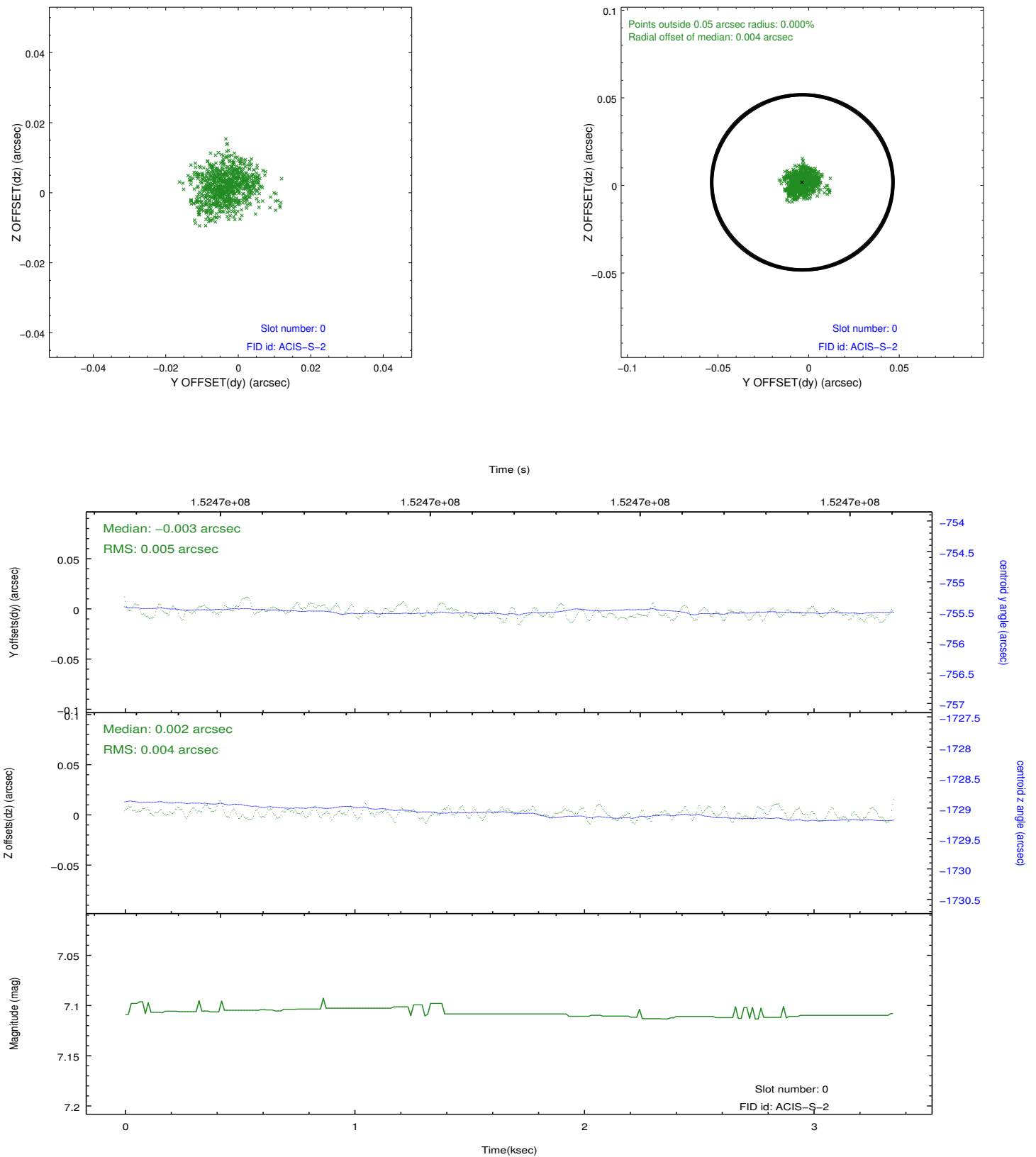


2.4.5 Slot 7

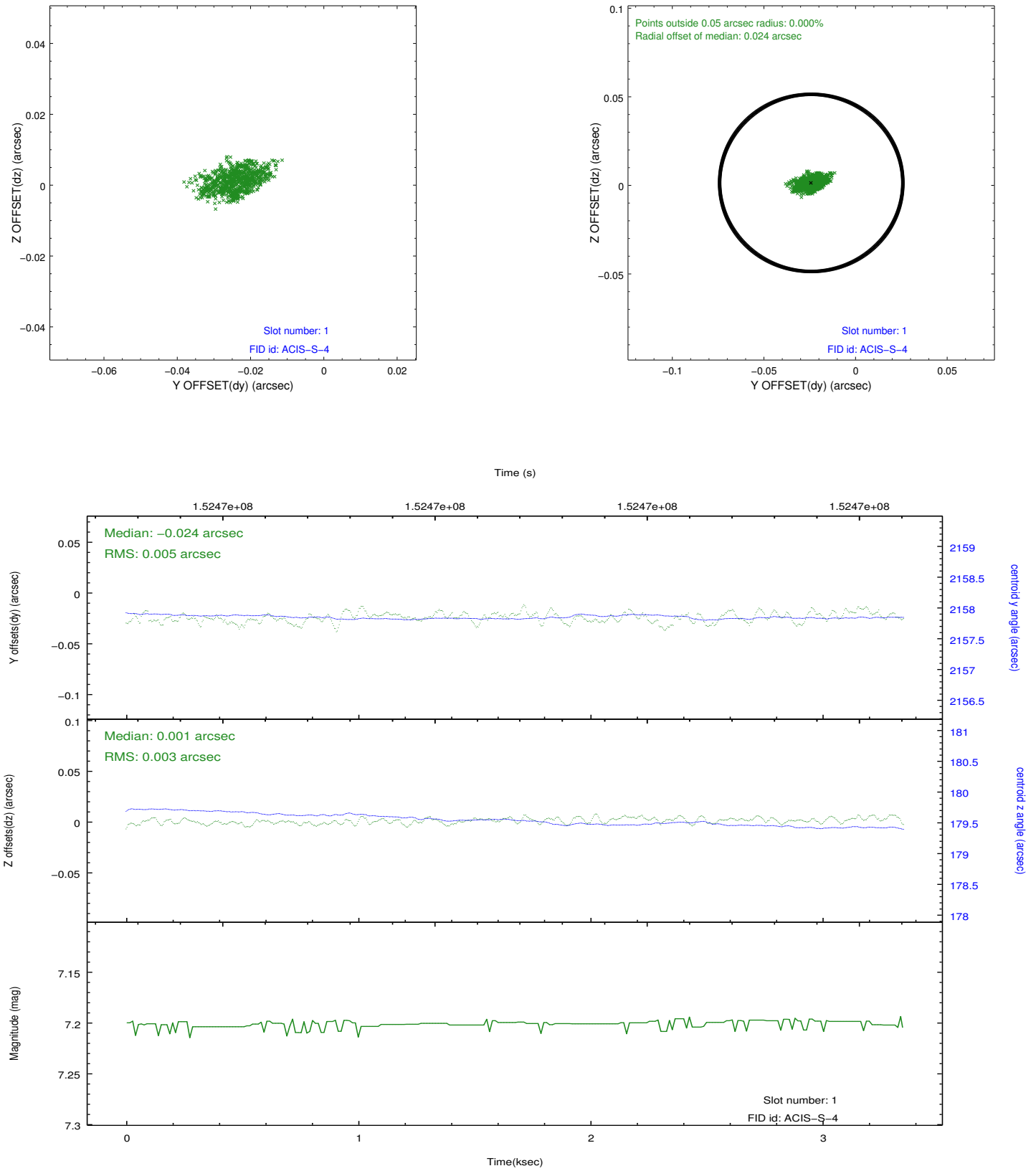


2.5 FID Slots

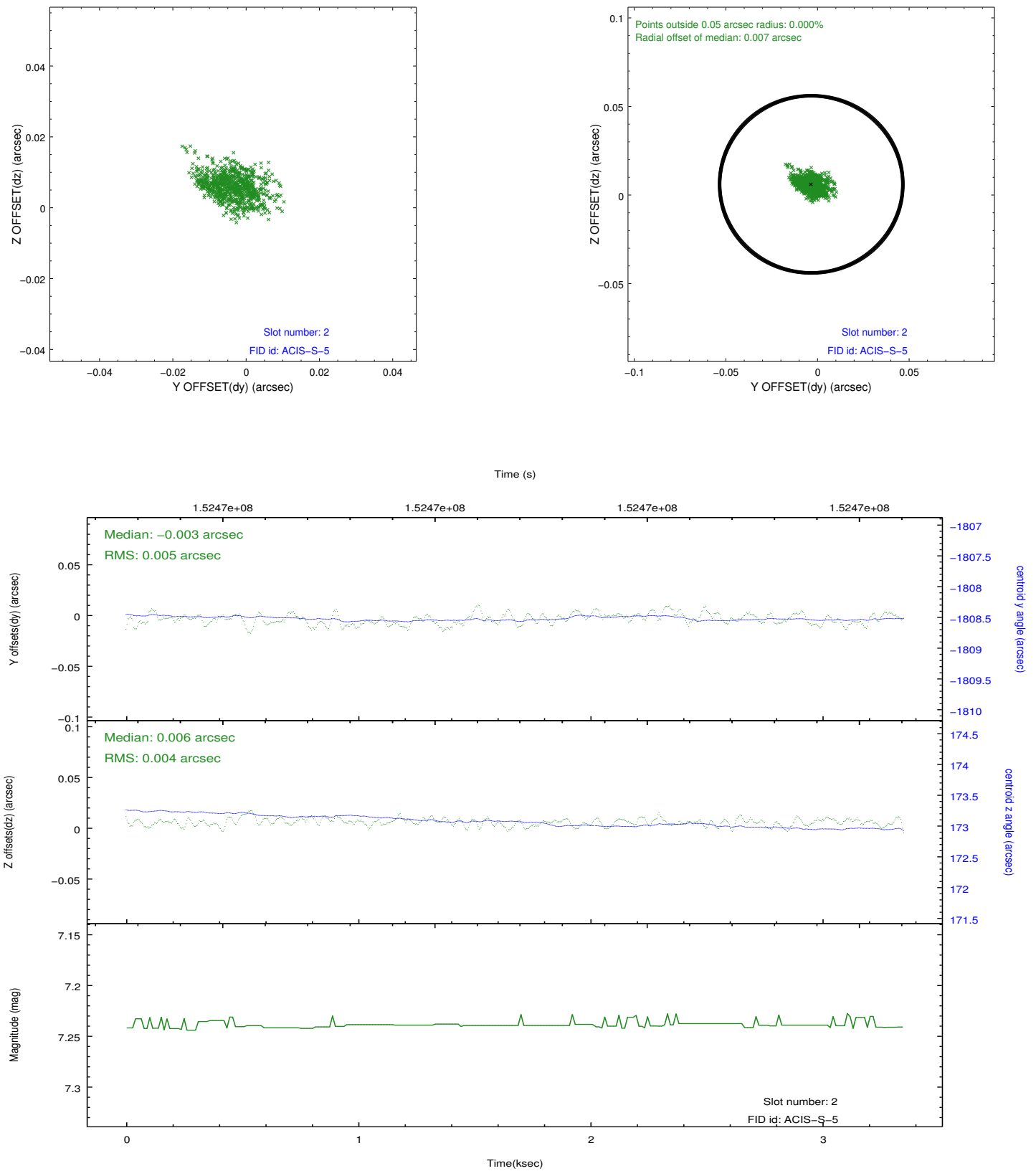
2.5.1 Slot 0



2.5.2 Slot 1



2.5.3 Slot 2



A Summary

A.1 Status

V&V Scientist	Beth Sundheim
V&V Date (YYYY-MM-DD)	2012.10.25
V&V Edition	1
V&V Disposition and Status	OK
V&V Charge Time	2.605

A.2 Comments