

V&V Reference Report

L2 ASCDS Version : 8.4.5

Observation 2995 - L2 Version 5
Chandra X-Ray Center

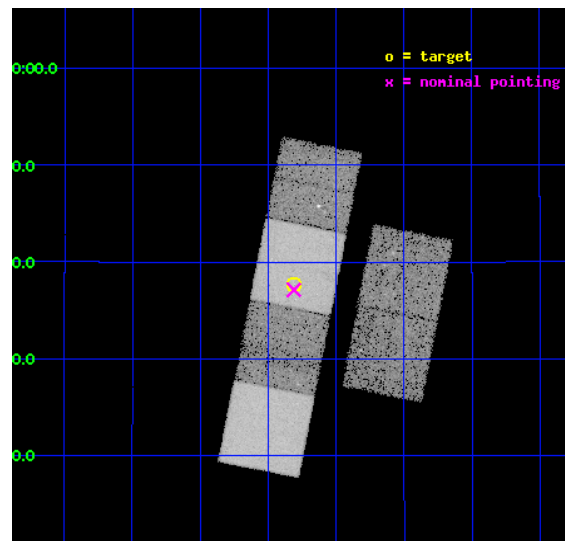
L2 Processing Date : Dec 7 2012

Contents

1	Front	2
2	OBI	3
2.1	OBI	3
2.1.1	Images	3
2.1.2	Bias	3
2.1.3	Parameters	4
2.1.4	Events	4
2.2	Compared Parameters	5
2.3	Aspect	6
2.4	Star Slots	9
2.4.1	Slot 4	9
2.4.2	Slot 5	10
2.4.3	Slot 6	11
2.4.4	Slot 7	12
2.5	FID Slots	13
2.5.1	Slot 0	13
2.5.2	Slot 1	14
2.5.3	Slot 2	15
A	Summary	16
A.1	Status	16
A.2	Comments	16

1 Front

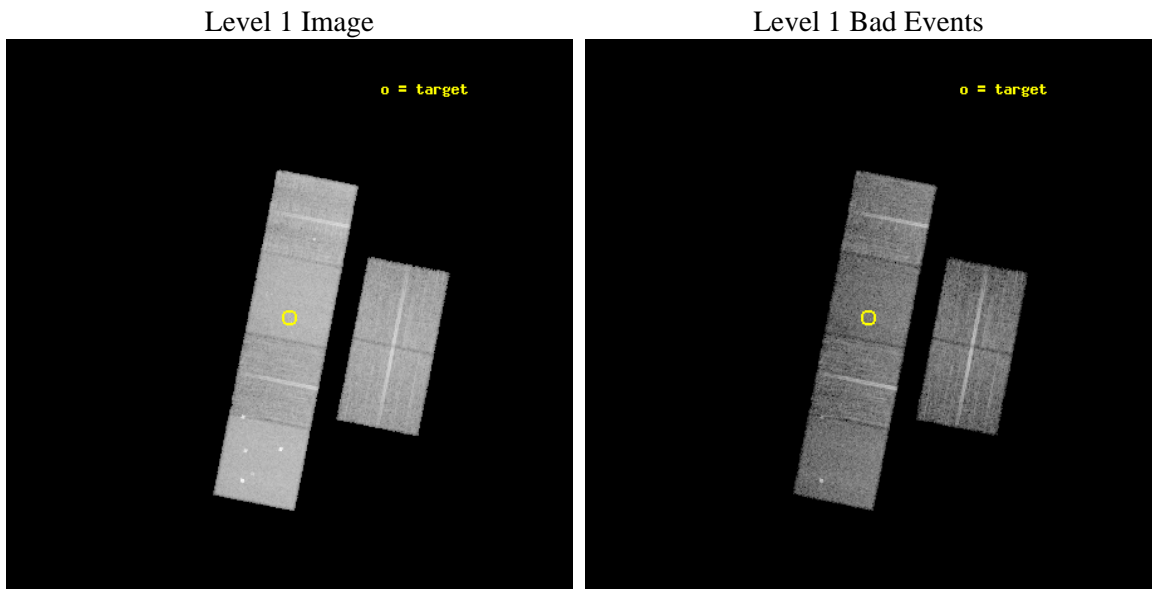
seq_num	700434	Sequence number
obs_id	2995	Observation id
title	CHANDRA OBSERVATIONS OF A POPULATION OF TYPE 2 QUASARS DISCOVERED IN THE DPOSS	Proposal title
observer	PROF. S. DJORGOVSKI	Principal investigator
object	PSS 2237+1837	Source name
dtcycle	0	
cycle	P	events from which exps? Prim/Second/Both
ra_targ	339.4525	Observer's specified target RA [deg]
dec_targ	18.628611	Observer's specified target Dec [deg]
ra_nom	339.45272230017	Nominal RA [deg]
dec_nom	18.61893890691	Nominal Dec [deg]
roll_nom	281.18842009257	Nominal Roll [deg]
revision	5	Processing version of data
ontime	14735.172726095	Sum of GTIs [s]
livetime	14548.587096581	Livetime [s]
ontime2	14735.213766098	Sum of GTIs [s]
ontime3	14735.049606085	Sum of GTIs [s]
ontime5	14735.131686091	Sum of GTIs [s]
ontime6	14735.090646088	Sum of GTIs [s]
ontime7	14735.172726095	Sum of GTIs [s]
ontime8	14731.767496198	Sum of GTIs [s]
l2events	190748	Number of level 2 events



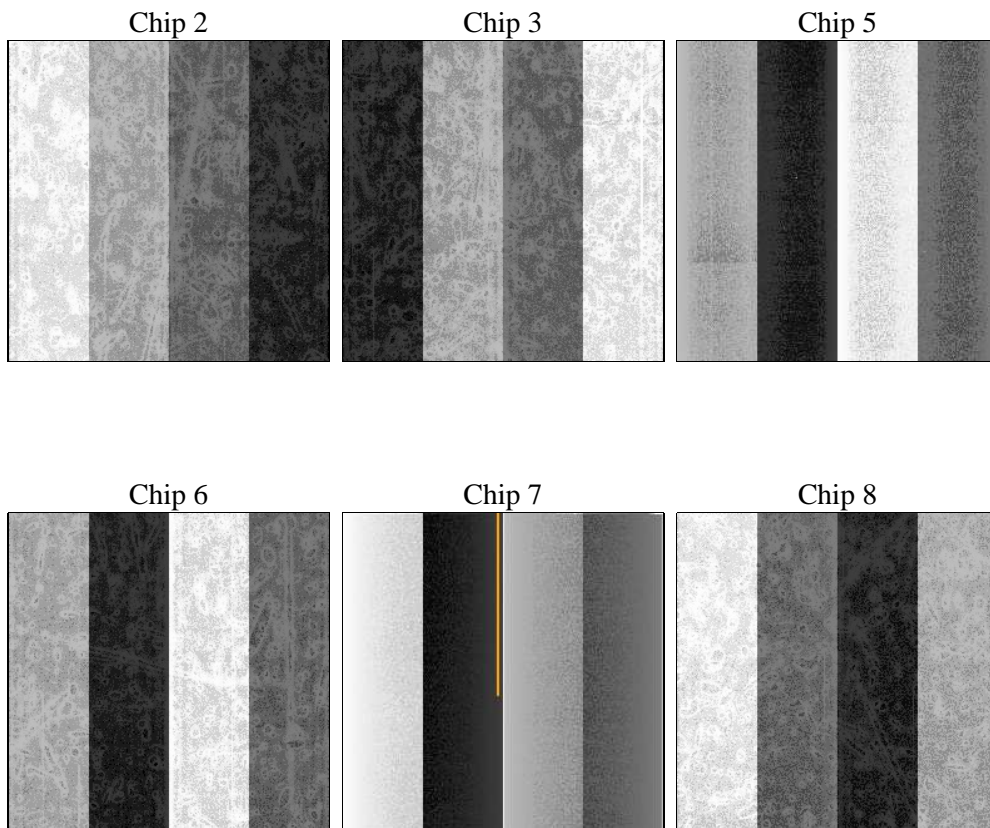
2 OBI

2.1 OBI

2.1.1 Images



2.1.2 Bias



2.1.3 Parameters

obi_num	1	Obi number	sched_exp_time	15000.000000	[s] Scheduled observation exposure time
ascdsver	8.5	Processing system revision	ontime	14735.172726095	Sum of GTIs [s]
caldsver	4.5.4	 	ontime2	14735.213766098	Sum of GTIs [s]
date	2012-12-07T04:11:52	Date and time of file creation	ontime3	14735.049606085	Sum of GTIs [s]
revision	5	Processing version of data	ontime5	14735.131686091	Sum of GTIs [s]
			ontime6	14735.090646088	Sum of GTIs [s]
			ontime7	14735.172726095	Sum of GTIs [s]
			ontime8	14731.767496198	Sum of GTIs [s]
			l1events	691010	Number of level 1 events

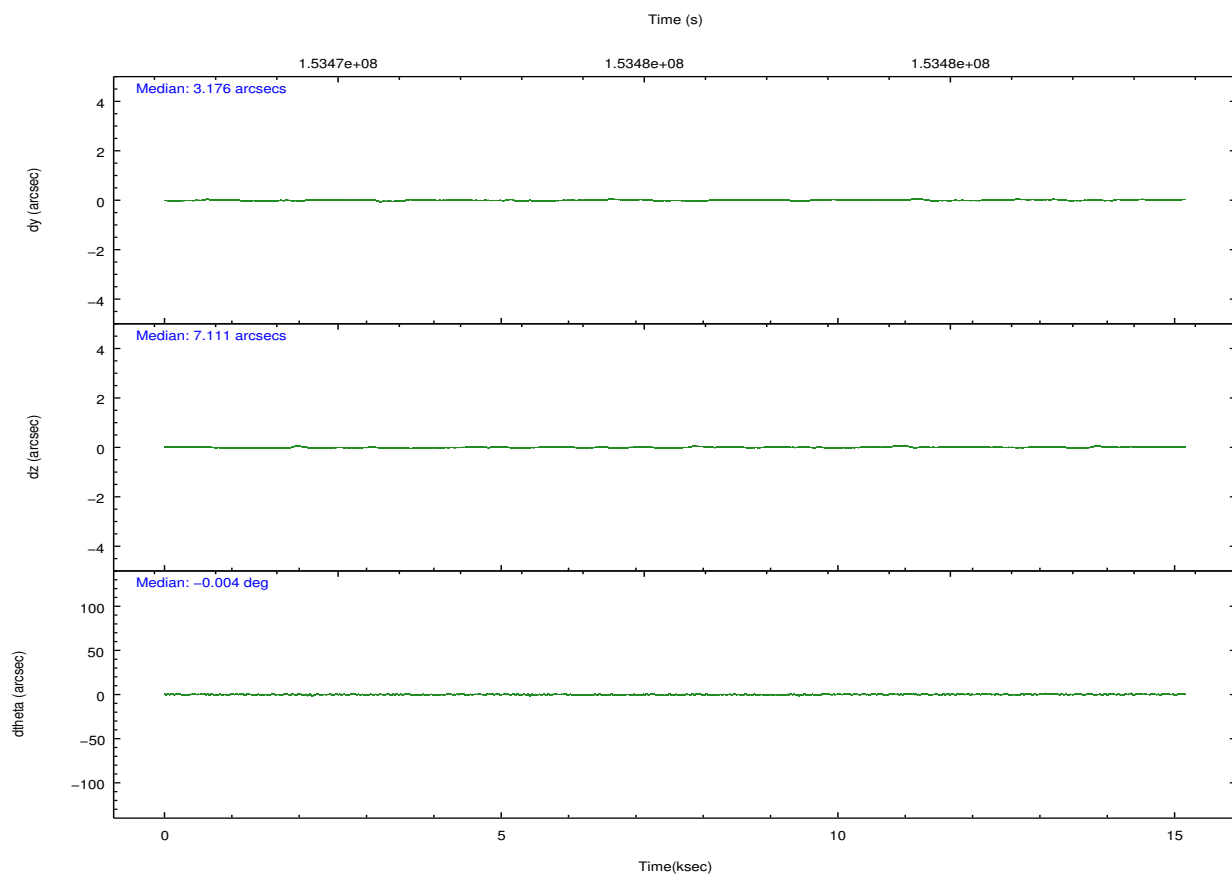
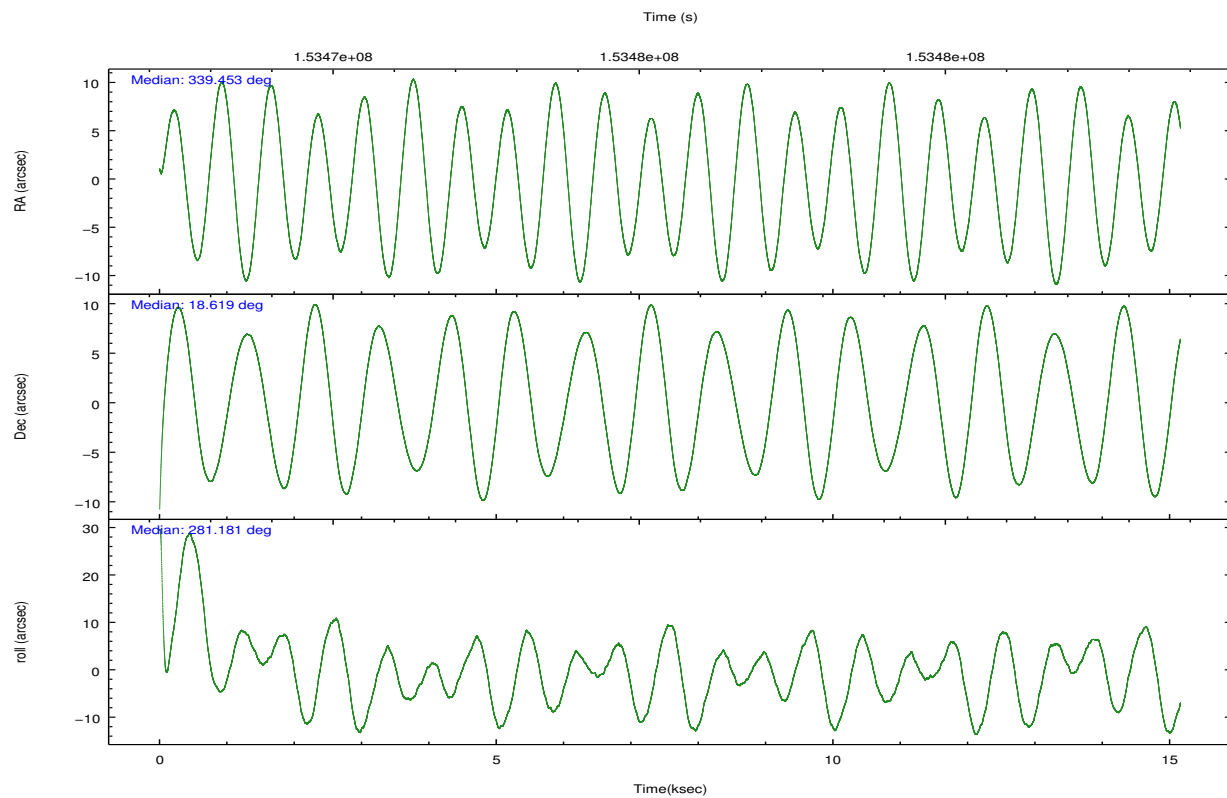
2.1.4 Events

	ccd 2	ccd 3	ccd 5	ccd 6	ccd 7	ccd 8		ccd 2	ccd 3	ccd 5	ccd 6	ccd 7	ccd 8
level 1 events	89793	89012	153960	92446	136855	128944	grade 0 events	6054	6192	11654	7094	6746	14504
rejected events	77136	76216	72334	77788	68190	92052		6%	6%	7%	7%	4%	11%
rejected %	85%	85%	46%	84%	49%	71%	grade 1 events	59	64	269	44	106	105
								0%	0%	0%	0%	0%	0%
							grade 2 events	2533	2564	23532	3177	12798	6367
								2%	2%	15%	3%	9%	4%
							grade 3 events	994	1033	3858	1085	5778	4642
								1%	1%	2%	1%	4%	3%
							grade 4 events	1060	1005	3666	1037	5668	4227
								1%	1%	2%	1%	4%	3%
							grade 5 events	3360	3666	9984	3825	11020	4997
								3%	4%	6%	4%	8%	3%
							grade 6 events	2022	2008	38938	2271	37699	7161
								2%	2%	25%	2%	27%	5%
							grade 7 events	73711	72480	62059	73913	57040	86941
								82%	81%	40%	79%	41%	67%

2.2 Compared Parameters

Parameter	Planned	Actual	Parameter	Planned	Actual
Instrument	ACIS	ACIS	Obspar format version number	7	7
Detector	ACIS-235678	ACIS-235678	Obspar file type	PREDICTED	ACTUAL
Grating	NONE	NONE	Obspar update status	NONE	UPDATED
Data mode	FAINT	FAINT	Number of optional ACIS chips dropped	0	0
Observation mode	POINTING	POINTING	On-chip summing requested	N	N
[deg] Pointing RA	339.433480	339.4527223001703	Subarray requested	NONE	NONE
[deg] Pointing Dec	18.639189	18.61893890690973	Alternating exposures requested	N	N
[deg] Pointing Roll	281.037910	281.1884200925703	[s] Primary exposure time	0.000000	3.2
[mm] SIM focus pos	-0.684267	-0.6828225247311905			
[mm] SIM defocus	0	0.001444936568705701			
[mm] SIM translation stage pos	-190.132523	-190.1425803651734			
[mm] SIM translation stage offset	0	0.01005778216563158			
[s] Observation start time (MET)	153468081.184000	153466764.3005			
Observation start date	2002-11-12T06:00:17	2002-11-12T05:39:24			
[s] Observation end time (MET)	153483081.184000	153483887.43871			
Observation end date	2002-11-12T10:10:17	2002-11-12T10:24:47			
Read mode	TIMED	TIMED			

2.3 Aspect

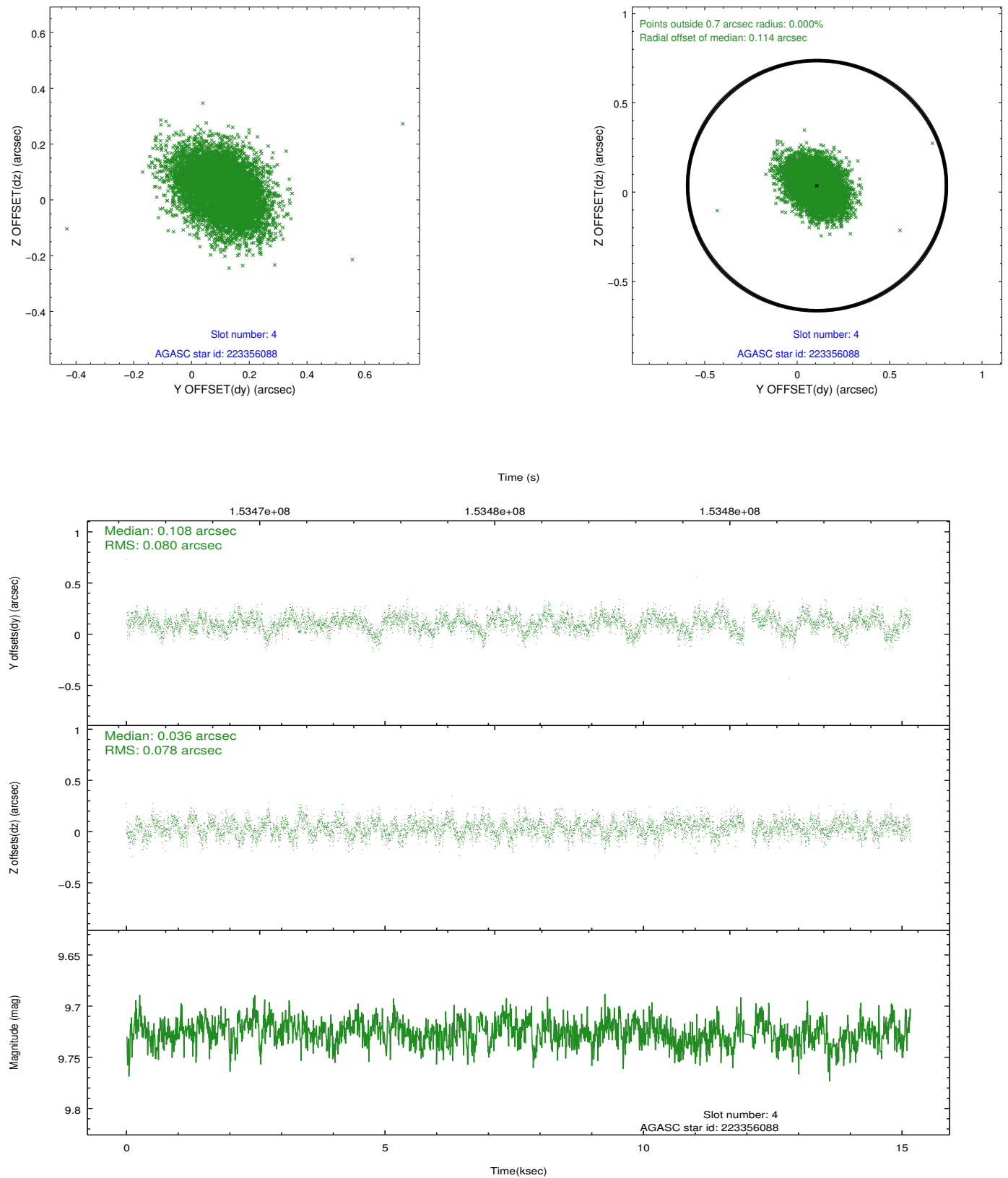


Slot Statistics

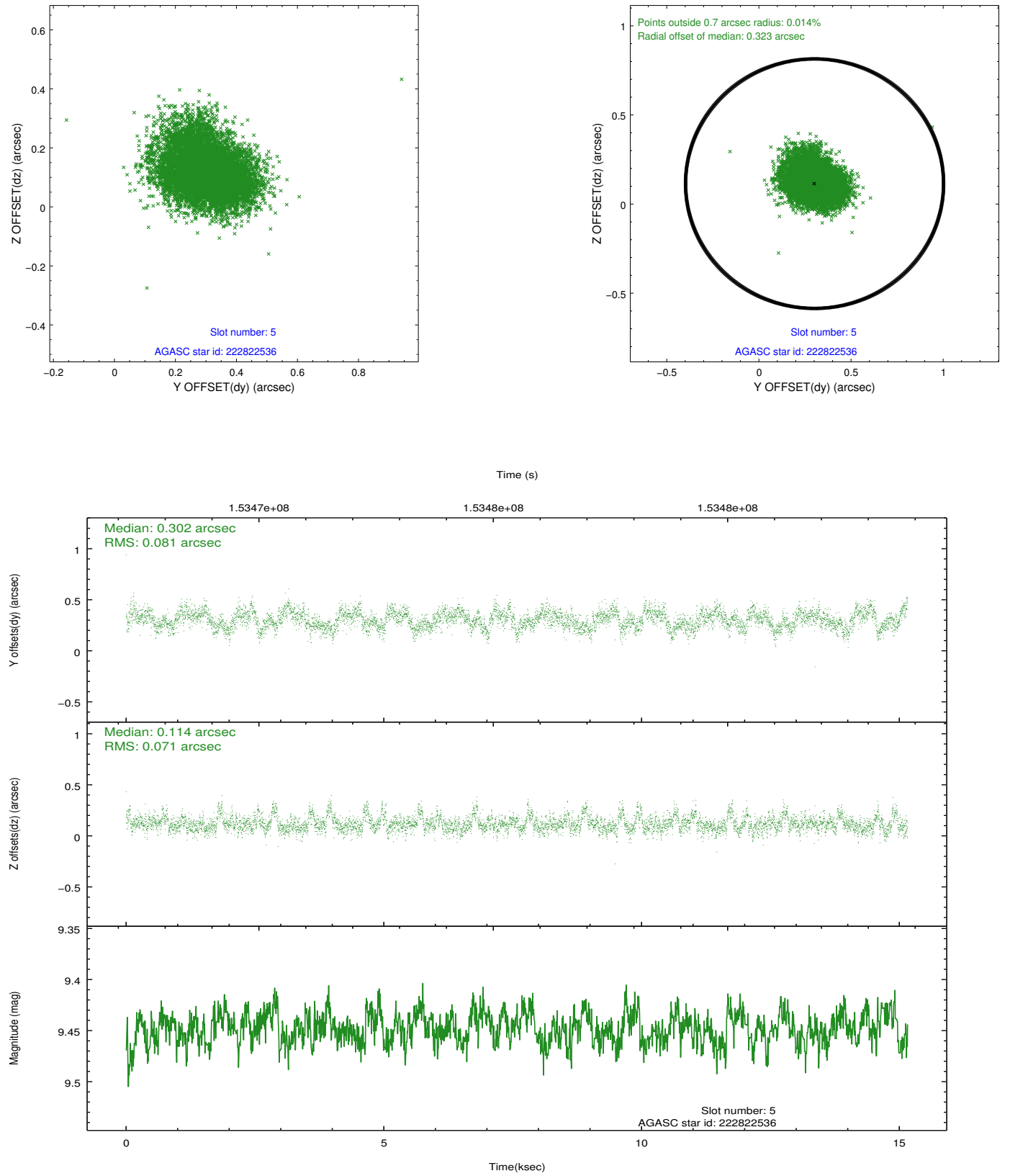
slot	status	id	mag	n_pts	med_dy	med_dz	dr1	dr2	ra	dec	mean_y	mean_z
0	FID	ACIS-S-2	7.11	3698	-0.020	-0.002	0.007	0.012	0.000000	0.000000	-755.83	-1728.23
1	FID	ACIS-S-4	7.20	3698	0.011	0.010	0.006	0.010	0.000000	0.000000	2157.33	179.97
2	FID	ACIS-S-5	7.24	3697	-0.022	0.001	0.007	0.011	0.000000	0.000000	-1808.30	173.95
3	OMITTED		0.00	0	0.000	0.000	0.000	0.000	0.000000	0.000000	0.00	0.00
4	GUIDE	223356088	9.73	7318	0.108	0.036	0.119	0.194	339.905828	18.773691	-168.49	1673.35
5	GUIDE	222822536	9.45	7391	0.302	0.114	0.115	0.188	339.751978	18.032867	2351.01	653.22
6	GUIDE	223355216	9.83	7385	0.097	-0.230	0.126	0.201	338.627588	18.983467	-1746.44	-2454.50
7	BAD	223358200	10.05	7114	-0.531	0.077	0.180	0.277	339.089132	19.217848	-2268.88	-750.55

2.4 Star Slots

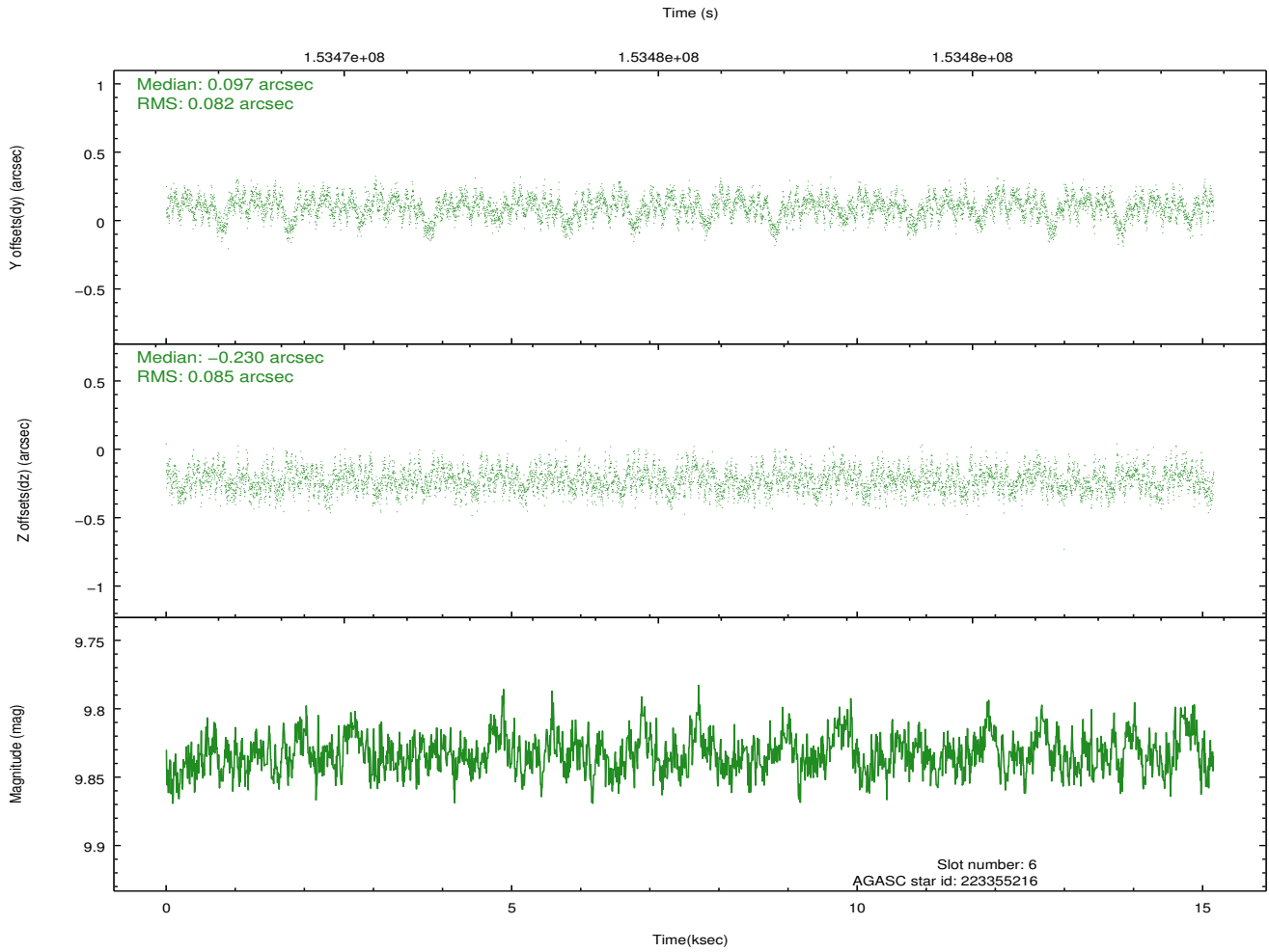
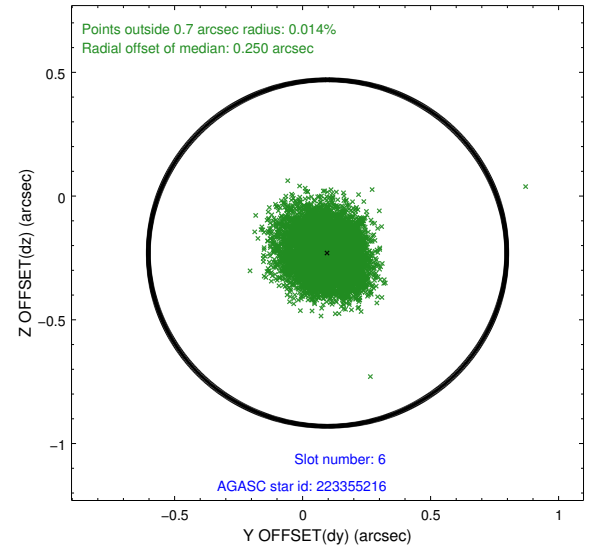
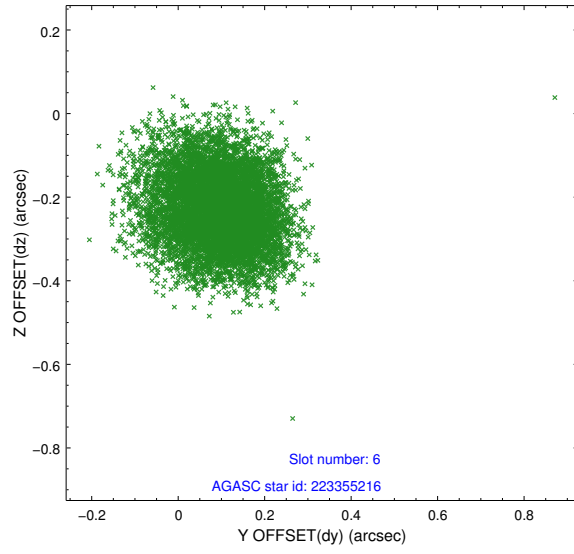
2.4.1 Slot 4



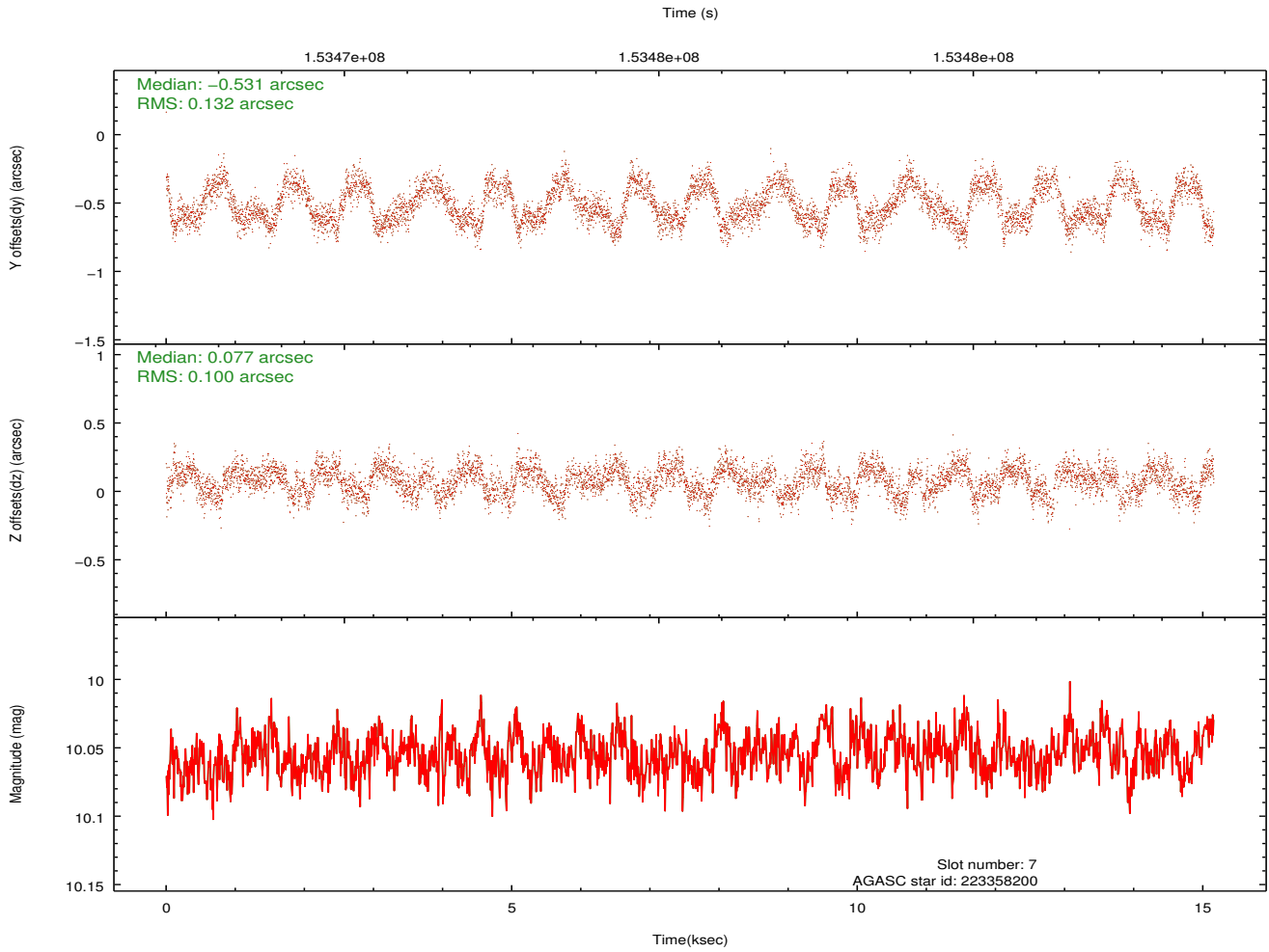
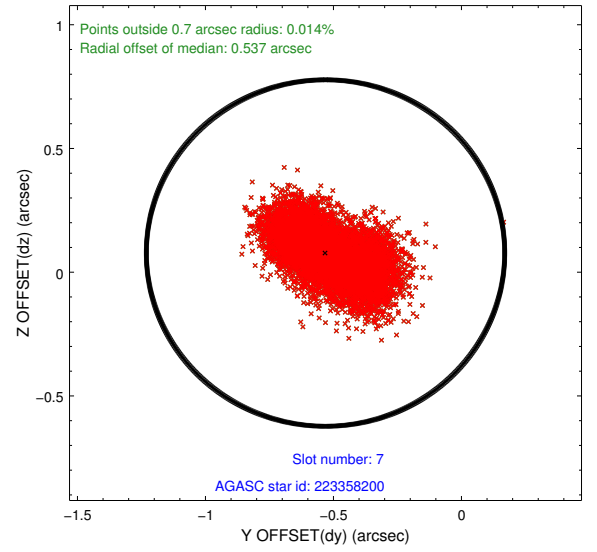
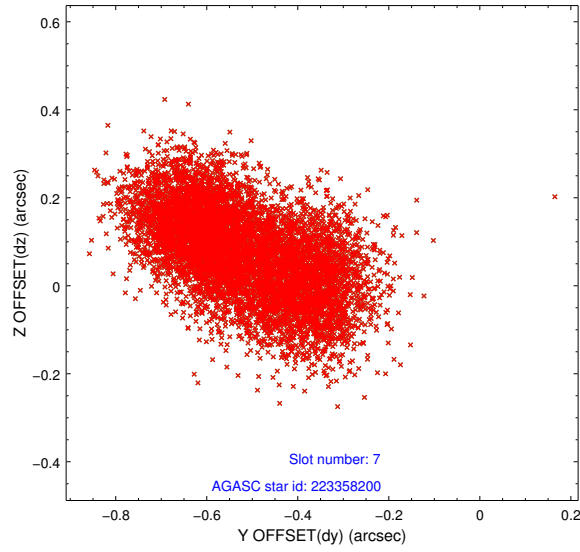
2.4.2 Slot 5



2.4.3 Slot 6

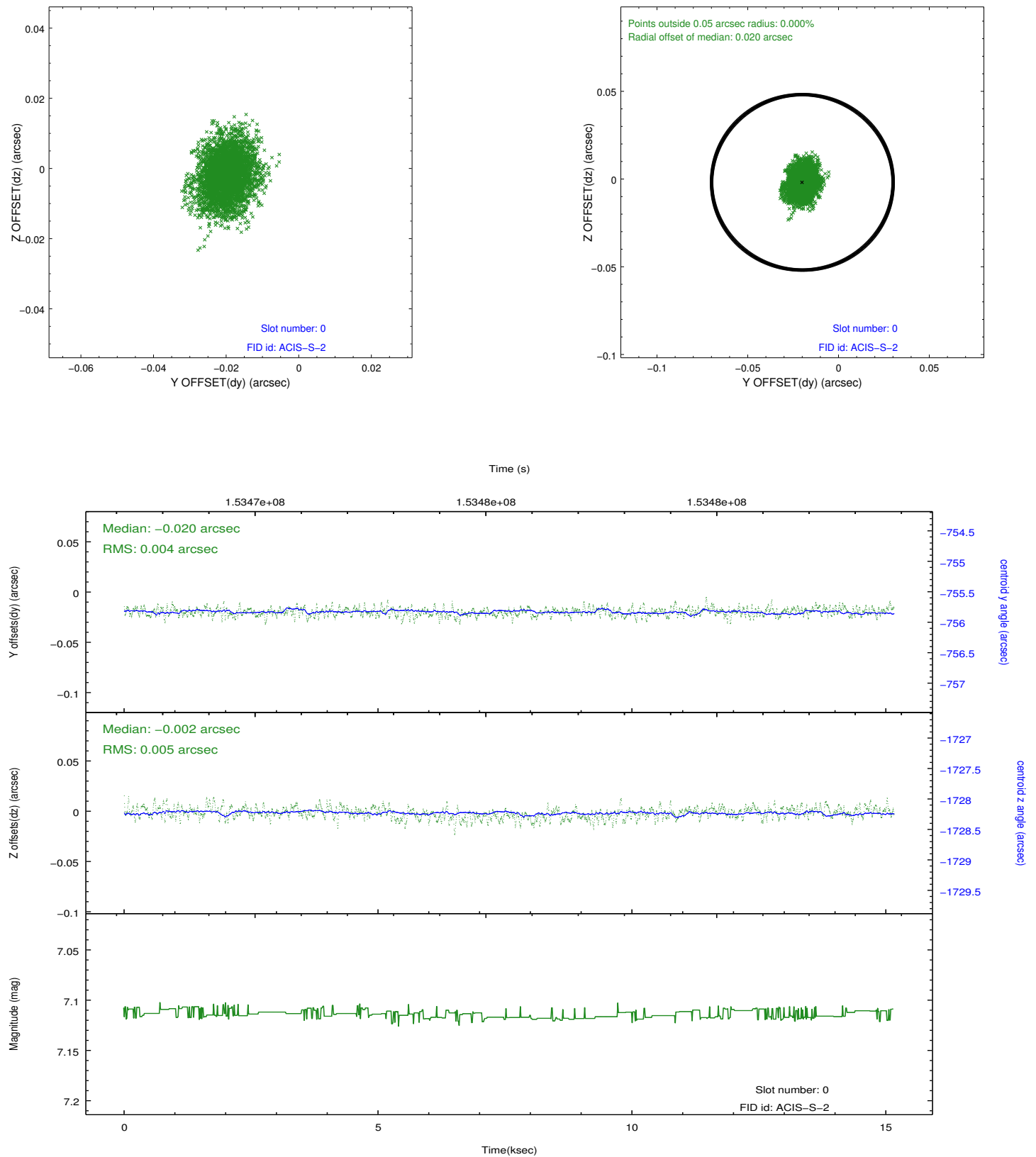


2.4.4 Slot 7

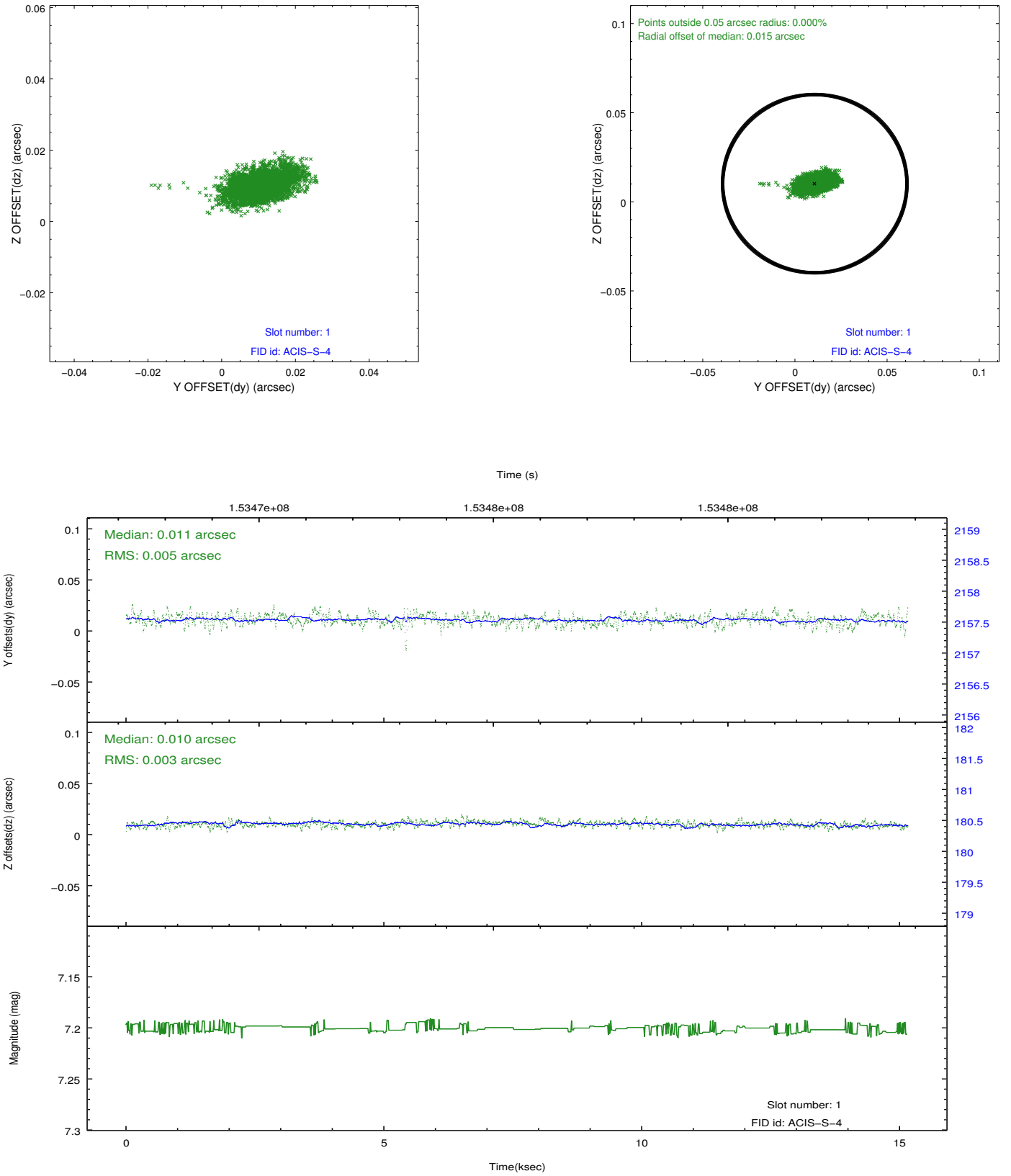


2.5 FID Slots

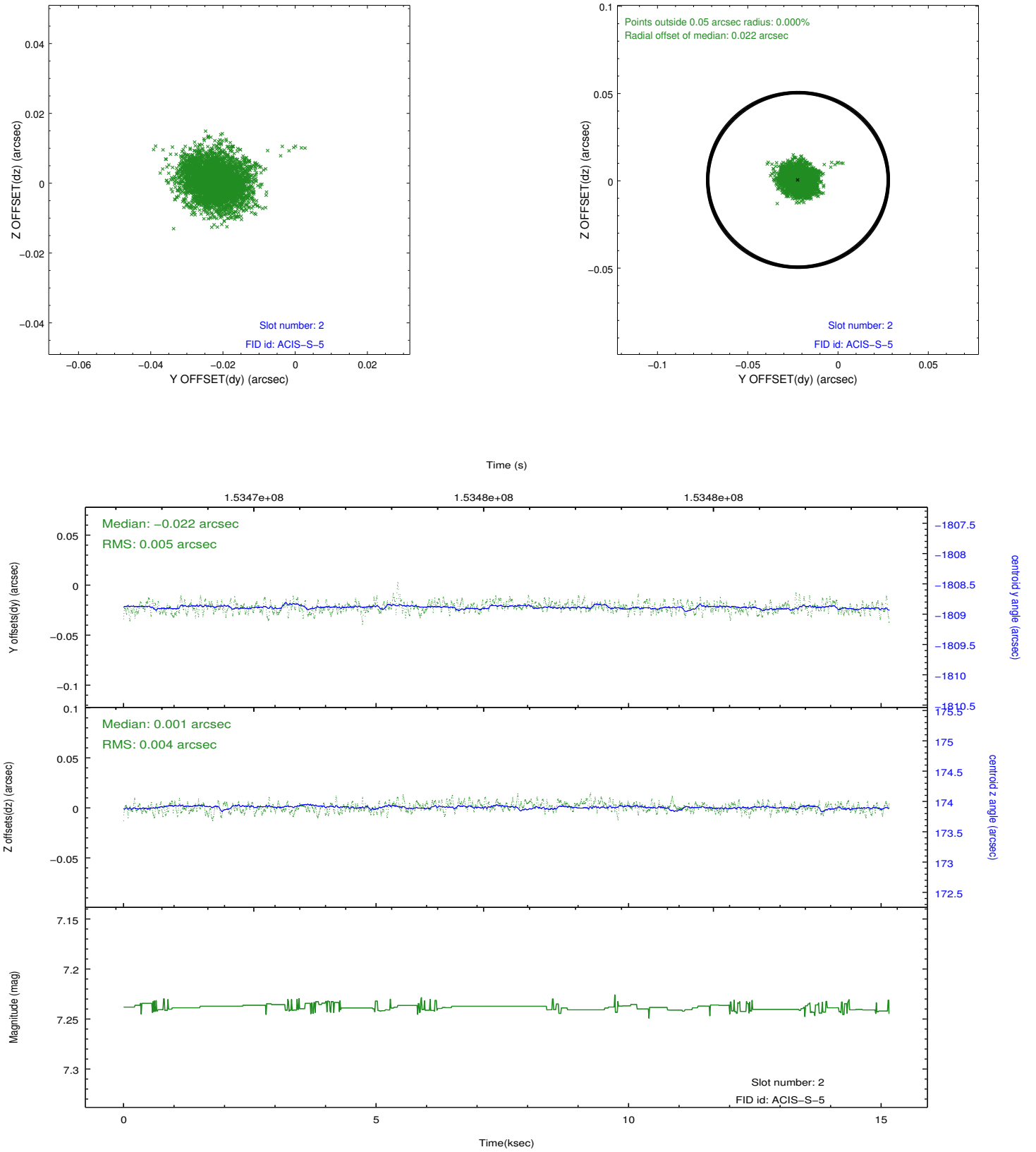
2.5.1 Slot 0



2.5.2 Slot 1



2.5.3 Slot 2



A Summary

A.1 Status

V&V Scientist	Beth Sundheim
V&V Date (YYYY-MM-DD)	2012.12.10
V&V Edition	1
V&V Disposition and Status	OK
V&V Charge Time	14.735

A.2 Comments

The guide star in slot 3 was removed from the aspect solution due to poor data quality. The aspect solution is improved by the removal of this star from the solution.