

V&V Reference Report

L2 ASCDS Version : 7.6.9

Observation 2975 - L2 Version 001
Chandra X-Ray Center

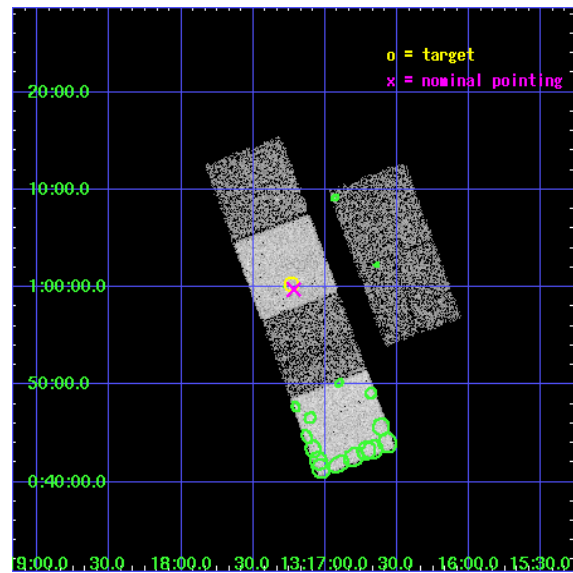
L2 Processing Date : Sep 26 2006

Contents

1	Front	2
2	OBI	3
2.1	OBI	3
2.1.1	Images	3
2.1.2	Bias	3
2.1.3	Parameters	4
2.1.4	Events	4
2.2	Compared Parameters	5
2.3	Aspect	6
2.4	Star Slots	9
2.4.1	Slot 3	9
2.4.2	Slot 4	10
2.4.3	Slot 5	11
2.4.4	Slot 6	12
2.4.5	Slot 7	13
2.5	FID Slots	14
2.5.1	Slot 0	14
2.5.2	Slot 1	15
2.5.3	Slot 2	16
3	Point Sources	17
A	Summary	18
A.1	Status	18
A.2	Comments	18

1 Front

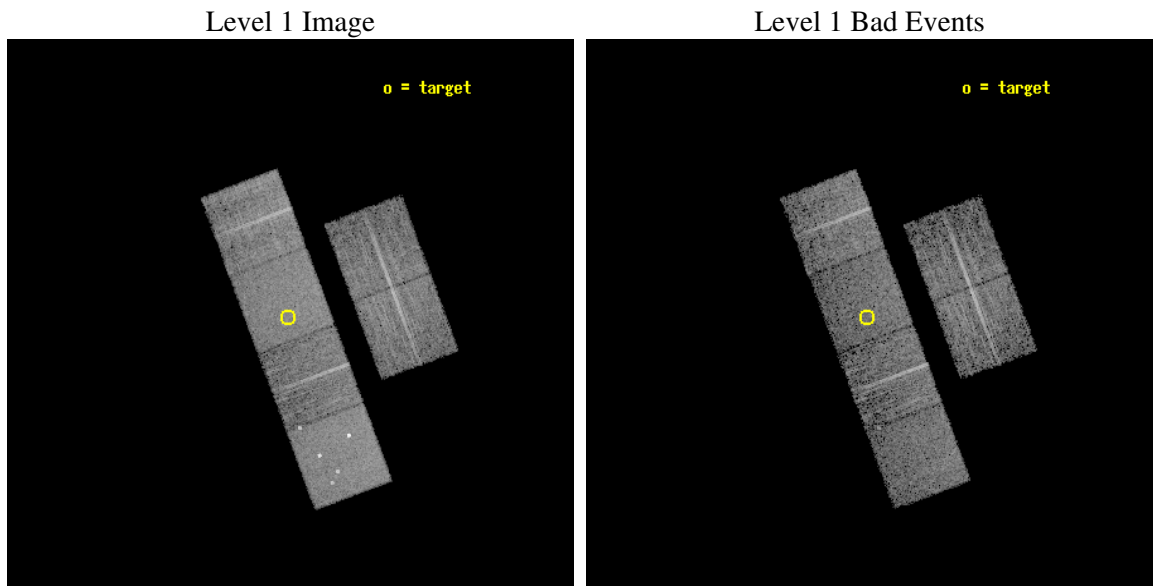
seq_num	700414
obs_id	2975
title	A COMPLETE X-RAY SAMPLE OF BROAD ABSORPTION LINE QSOS
observer	Professor Gordon Garmire
object	LBQS 1314+0116 ALTERN
dtcycle	0
cycle	P
ra_targ	199.309167
dec_targ	1.003611
ra_nom	199.30440723662
dec_nom	0.99571856449555
roll_nom	249.54611904795
revision	2
ontime	6655.9999752045
livetime	6571.7176957564
ontime2	6655.9999752045
ontime3	6655.9999752045
ontime5	6655.9999752045
ontime6	6655.9999752045
ontime7	6655.9999752045
ontime8	6649.5181543529
l2events	67738



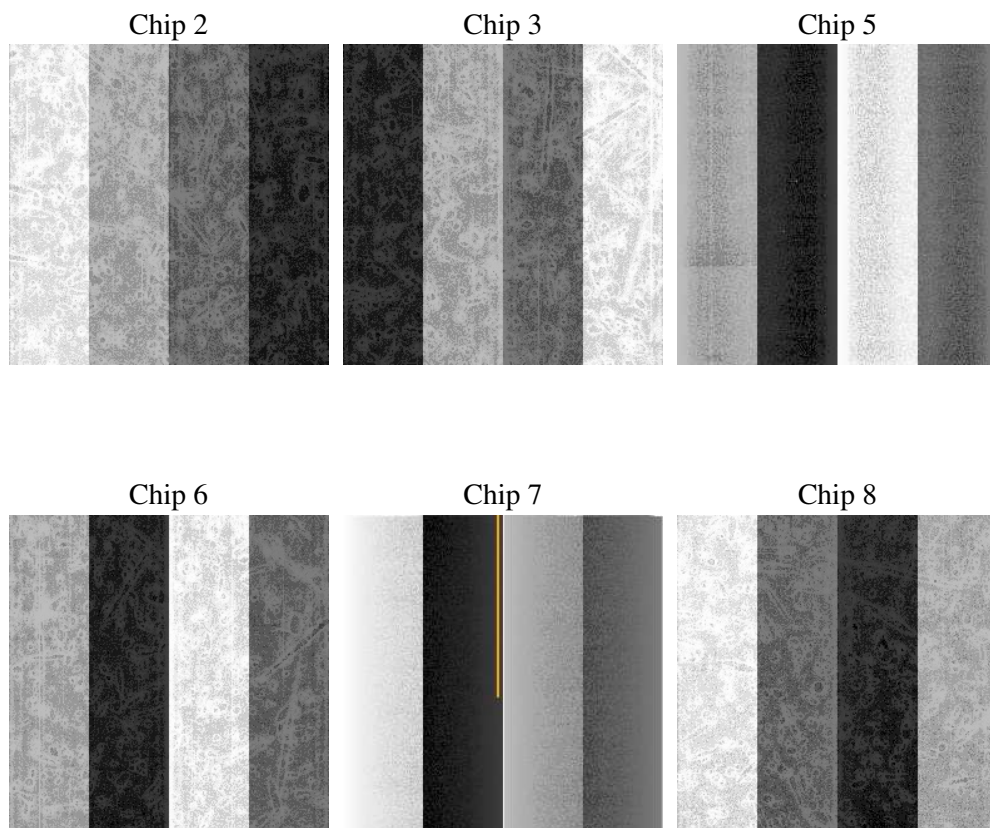
2 OBI

2.1 OBI

2.1.1 Images



2.1.2 Bias



2.1.3 Parameters

obi_num	1
ascdsver	7.6.9
caldbver	3.2.3
date	2006-09-26T08:30:28
revision	2

sched_exp_time	6900.000000
ontime	6660.2541235983
ontime2	6660.2541235983
ontime3	6660.2541534901
ontime5	6660.2541235983
ontime6	6660.2541235983
ontime7	6660.2541235983
ontime8	6653.772203058
l1events	309115

2.1.4 Events

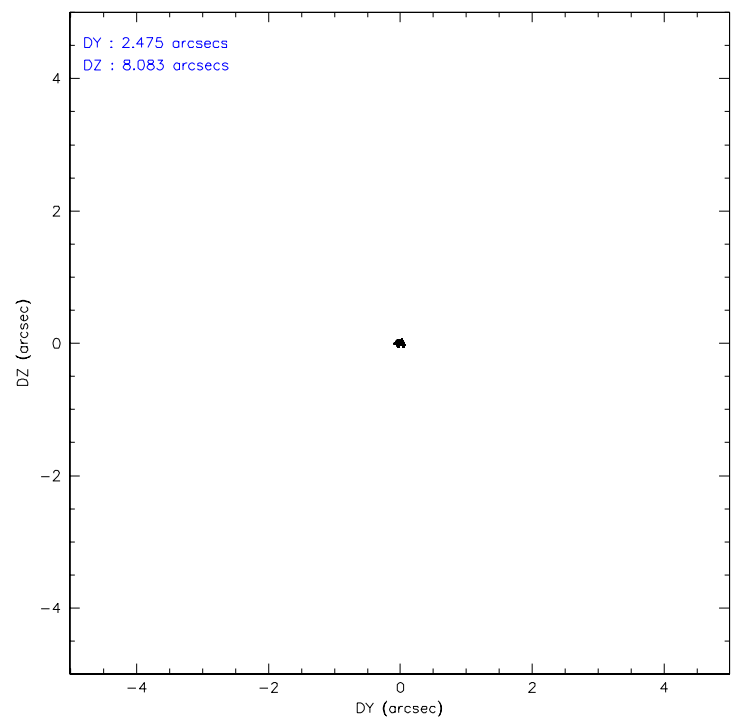
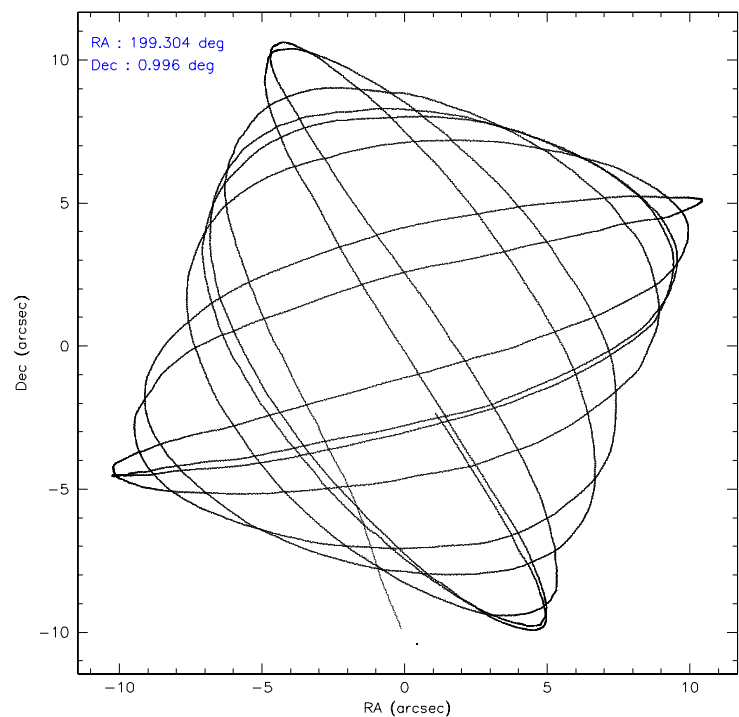
	ccd 2	ccd 3	ccd 5	ccd 6	ccd 7	ccd 8
level 1 events	45647	41414	65308	43643	55869	57234
rejected events	39993	36116	33960	37971	33833	43762
rejected %	87%	87%	51%	87%	60%	76%

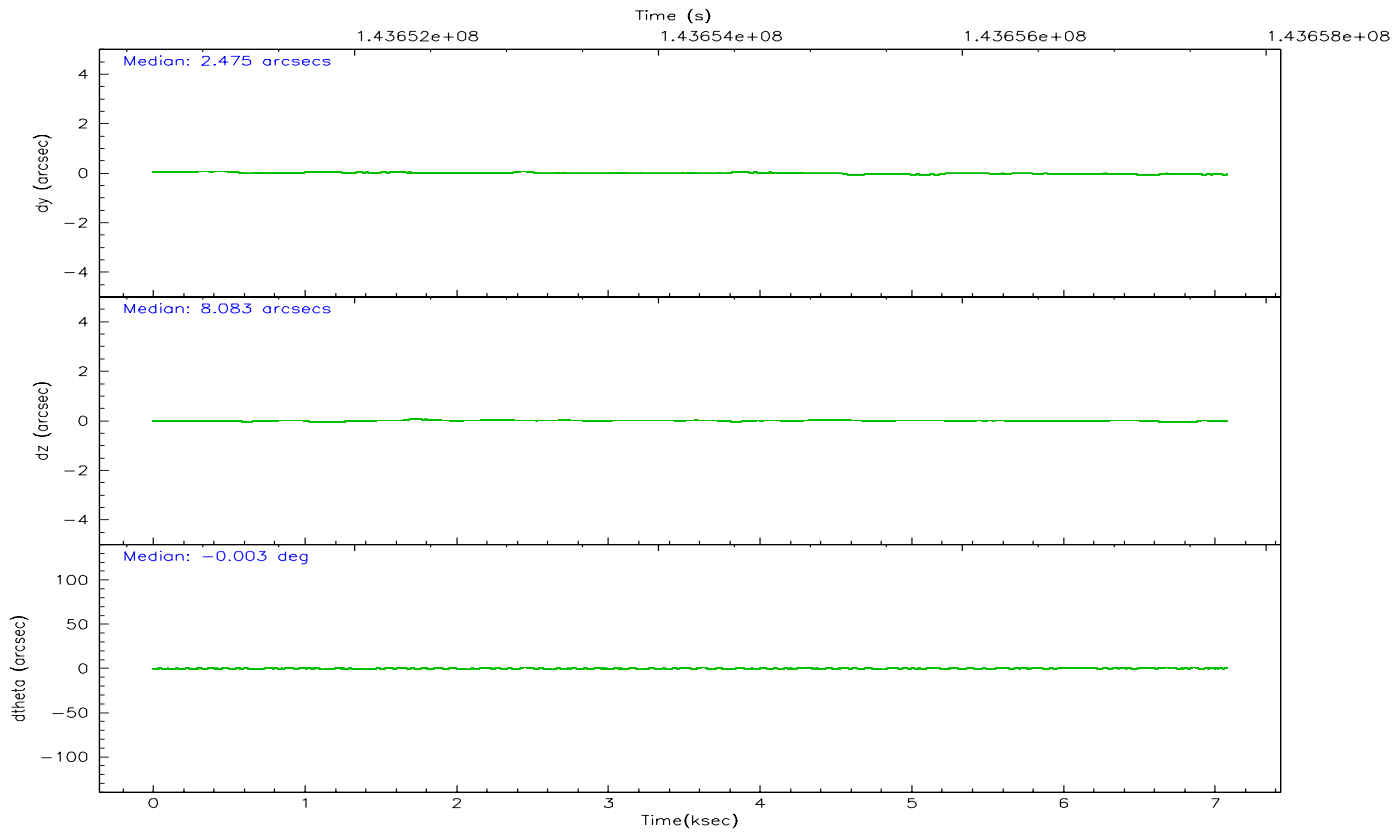
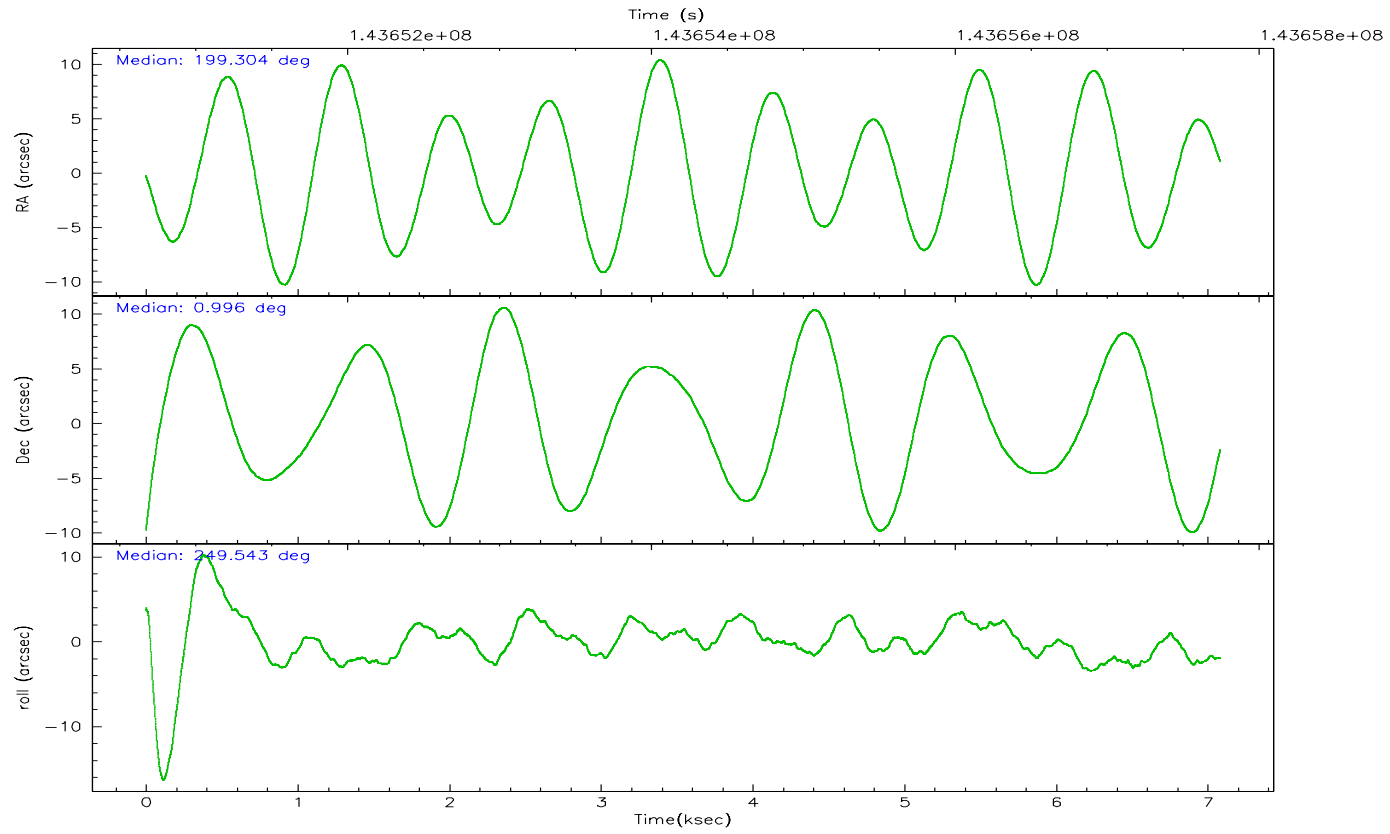
	ccd 2	ccd 3	ccd 5	ccd 6	ccd 7	ccd 8
grade 0 events	2517	2331	5121	2427	1391	4348
	5%	5%	7%	5%	2%	7%
grade 1 events	17	19	96	29	35	38
	0%	0%	0%	0%	0%	0%
grade 2 events	1262	1116	8919	1153	5532	2735
	2%	2%	13%	2%	9%	4%
grade 3 events	474	459	693	527	1163	1643
	1%	1%	1%	1%	2%	2%
grade 4 events	451	473	758	506	1120	1538
	0%	1%	1%	1%	2%	2%
grade 5 events	1499	1669	3069	1808	3664	2321
	3%	4%	4%	4%	6%	4%
grade 6 events	955	926	15887	1065	12858	3211
	2%	2%	24%	2%	23%	5%
grade 7 events	38472	34421	30765	36128	30106	41400
	84%	83%	47%	82%	53%	72%

2.2 Compared Parameters

Parameter	Planned	Actual	Parameter	Planned	Actual
Instrument	ACIS	ACIS	Obspar format version number	6	6
Detector	ACIS-235678	ACIS-235678	Obspar file type	PREDICTED	ACTUAL
Grating	NONE	NONE	Obspar update status	NONE	UPDATED
Data mode	FAINT	FAINT	Number of optional ACIS chips dropped	0	0
Observation mode	POINTING	POINTING	On-chip summing requested	N	N
Pointing RA	199.299548	199.3044072366247	Subarray requested	NONE	NONE
Pointing Dec	1.022542	0.9957185644955507	Alternating exposures requested	N	N
Pointing Roll	249.389546	249.546119047949	Primary exposure time	0.000000	3.2
SIM focus pos (mm)	-0.684267	-0.6828225247311905			
SIM defocus (mm)	0	0.001444936568705701			
SIM translation stage pos (mm)	-190.132523	-190.1425803651734			
SIM translation stage offset (mm)	0	0.01005778216563158			
Observation start time	143650852.184000	143650160.0321			
Observation start date	2002-07-21T14:59:48	2002-07-21T14:49:20			
Observation end time	143657752.184000	143658147.85743			
Observation end date	2002-07-21T16:54:48	2002-07-21T17:02:27			
Read mode	TIMED	TIMED			

2.3 Aspect



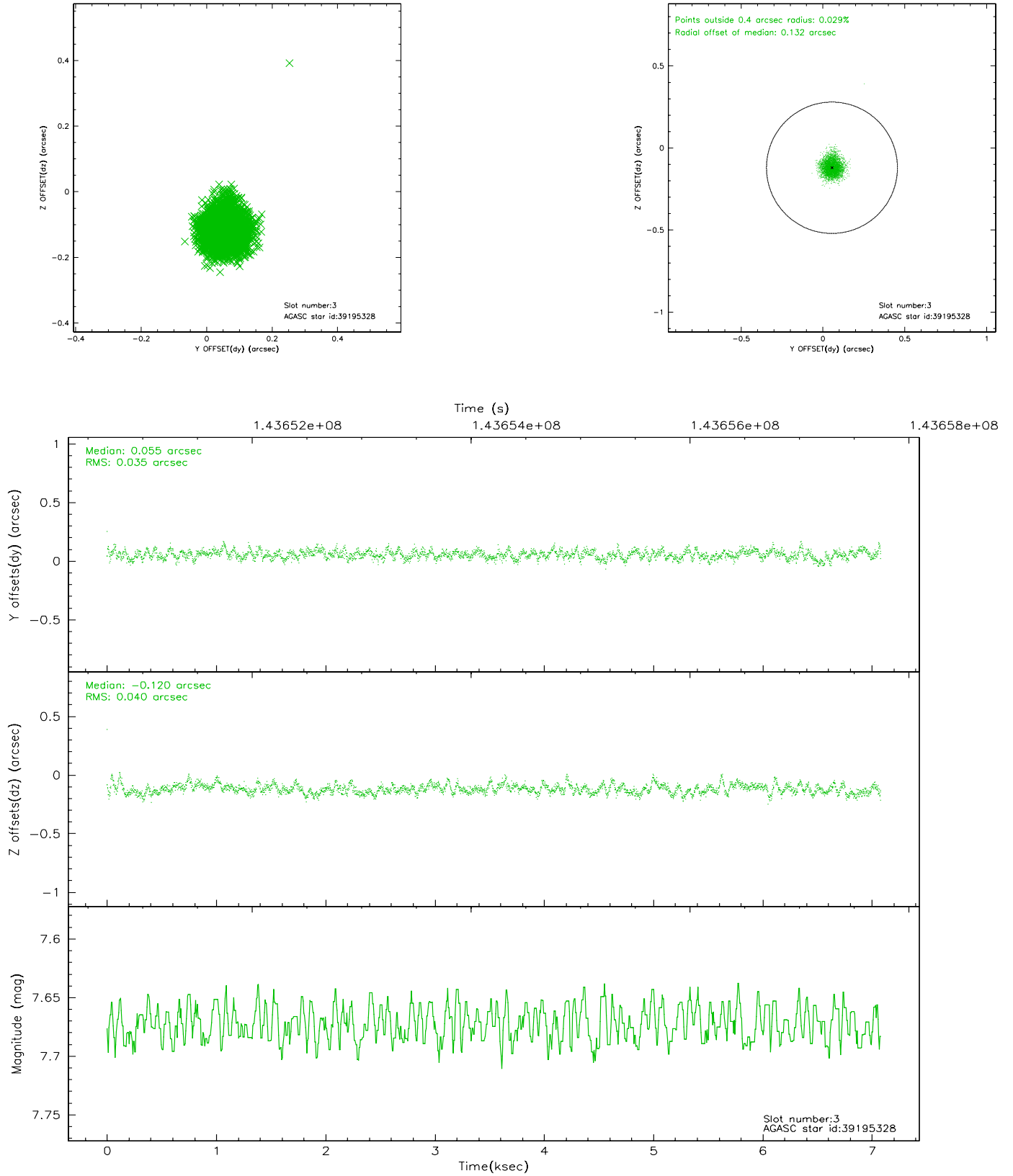


Slot Statistics

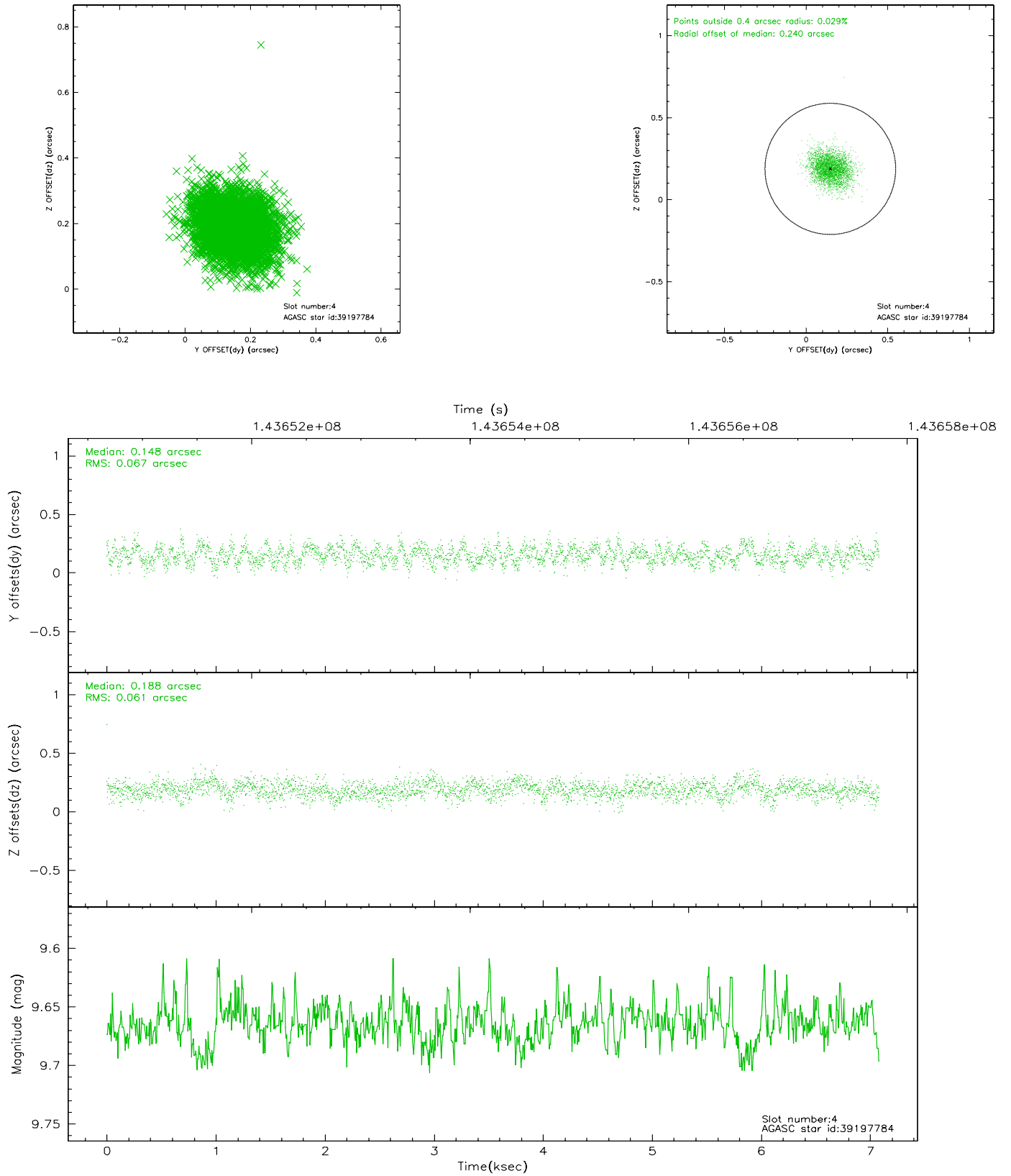
slot	status	id	mag	n_pts	med_dy	med_dz	dr1	dr2	ra	dec	mean_y	mean_z
0	FID	ACIS-S-2	7.11	1727	0.004	0.025	0.007	0.011	0.000000	0.000000	-755.12	-1729.19
1	FID	ACIS-S-4	7.20	1728	-0.080	-0.008	0.005	0.009	0.000000	0.000000	2157.73	178.38
2	FID	ACIS-S-5	7.23	1727	0.045	-0.007	0.006	0.011	0.000000	0.000000	-1806.85	173.03
3	GUIDE	39195328	7.67	3455	0.055	-0.120	0.056	0.089	199.216014	1.240233	-626.76	-557.18
4	GUIDE	39197784	9.66	3448	0.148	0.188	0.096	0.153	199.911028	1.264167	-1588.43	1753.79
5	GUIDE	39198032	10.11	3454	0.042	0.110	0.122	0.200	199.364971	0.795073	683.98	509.59
6	GUIDE	39198152	7.40	3454	-0.223	0.015	0.072	0.110	199.619926	1.246395	-1159.27	796.08
7	GUIDE	39196624	9.66	3453	-0.027	-0.189	0.119	0.194	198.819782	1.675629	-1592.28	-2443.57

2.4 Star Slots

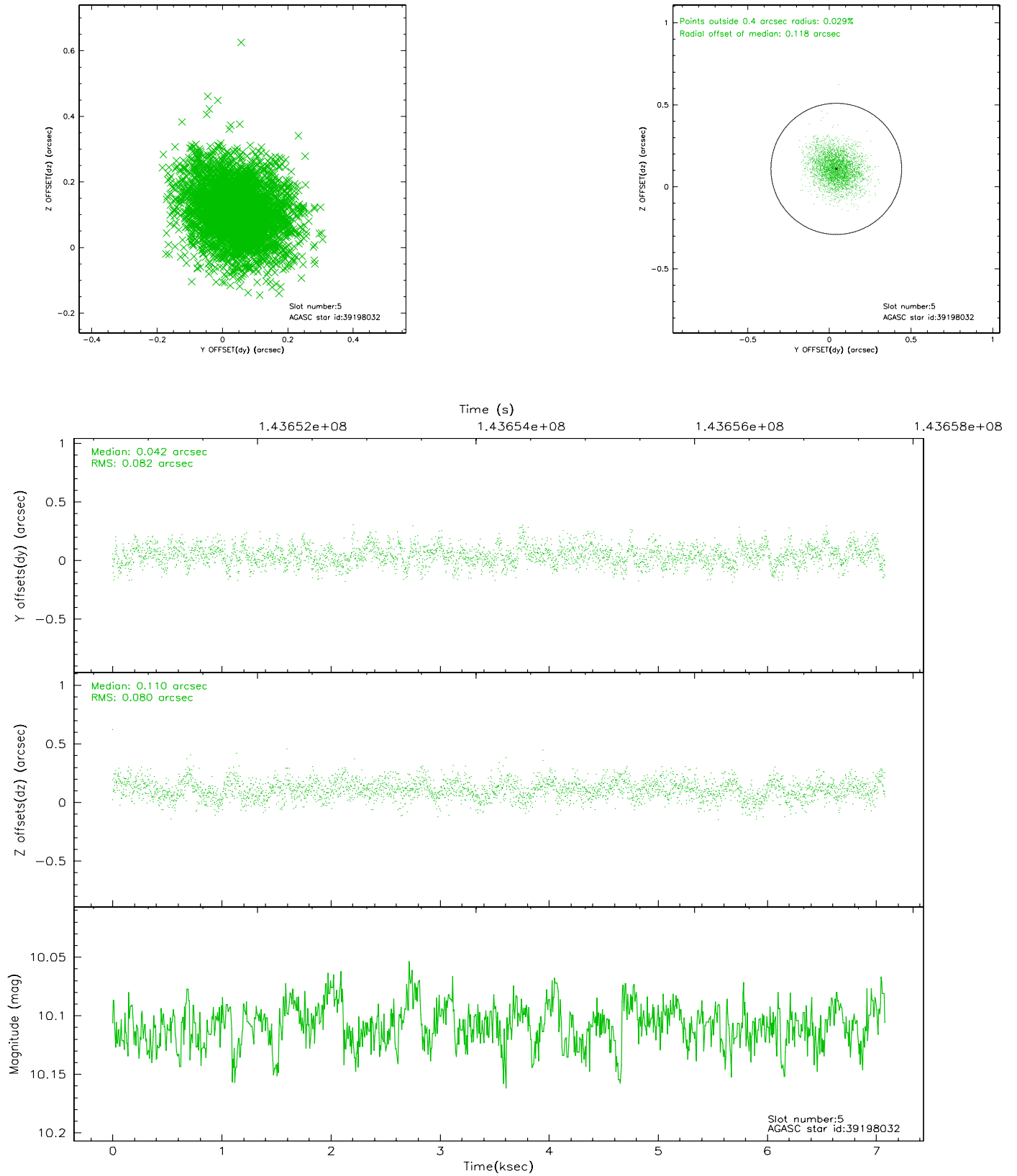
2.4.1 Slot 3



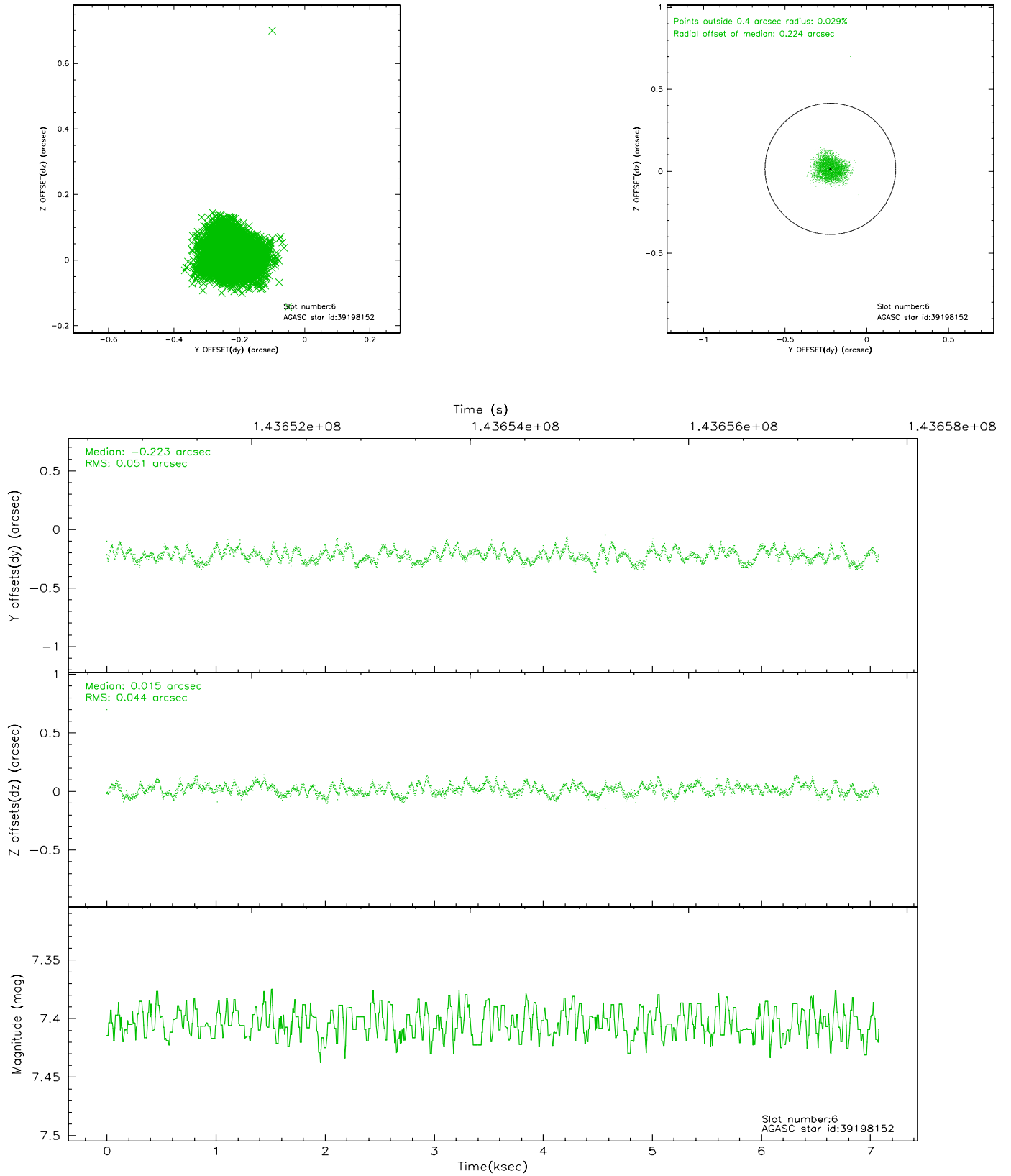
2.4.2 Slot 4



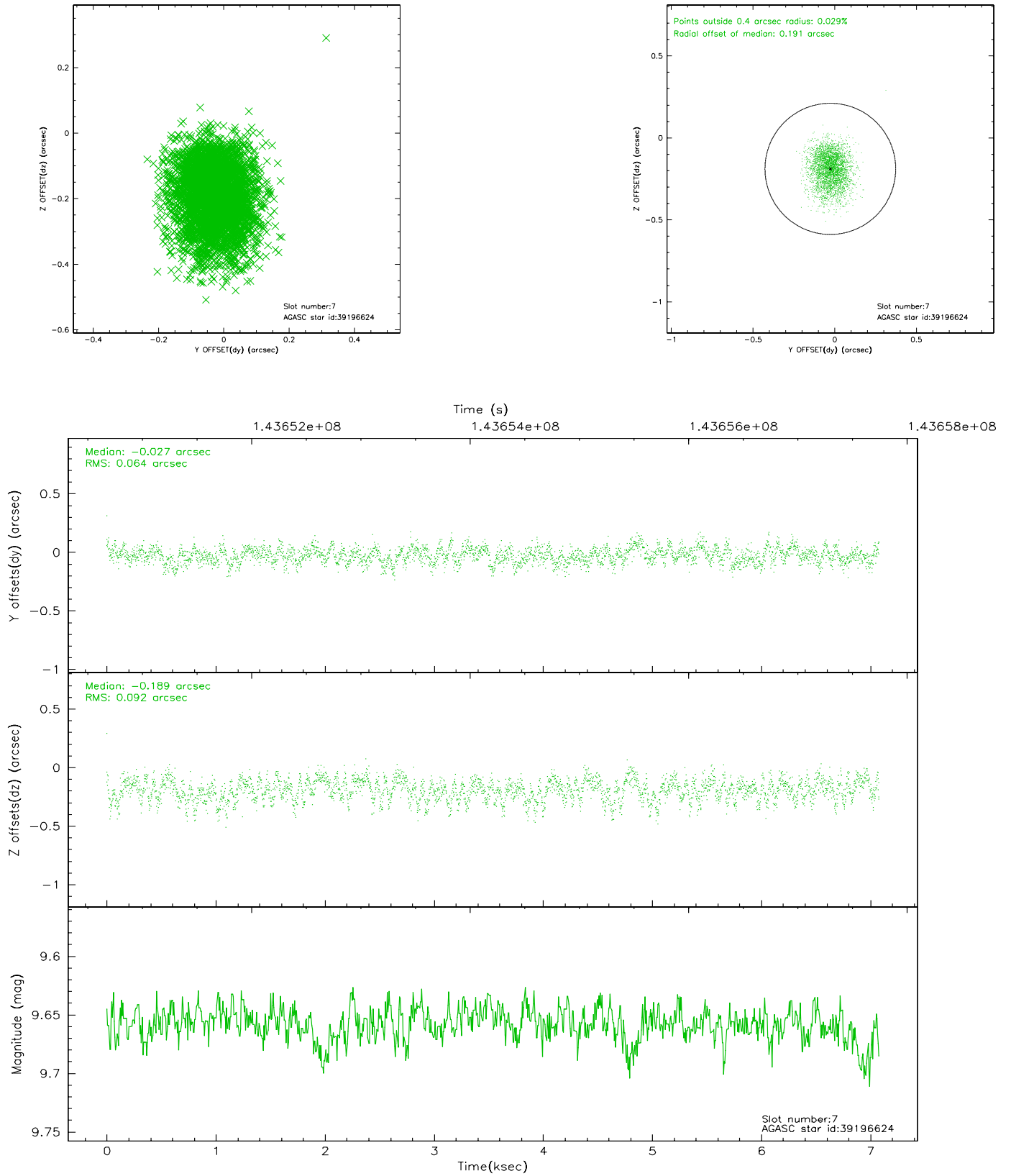
2.4.3 Slot 5



2.4.4 Slot 6

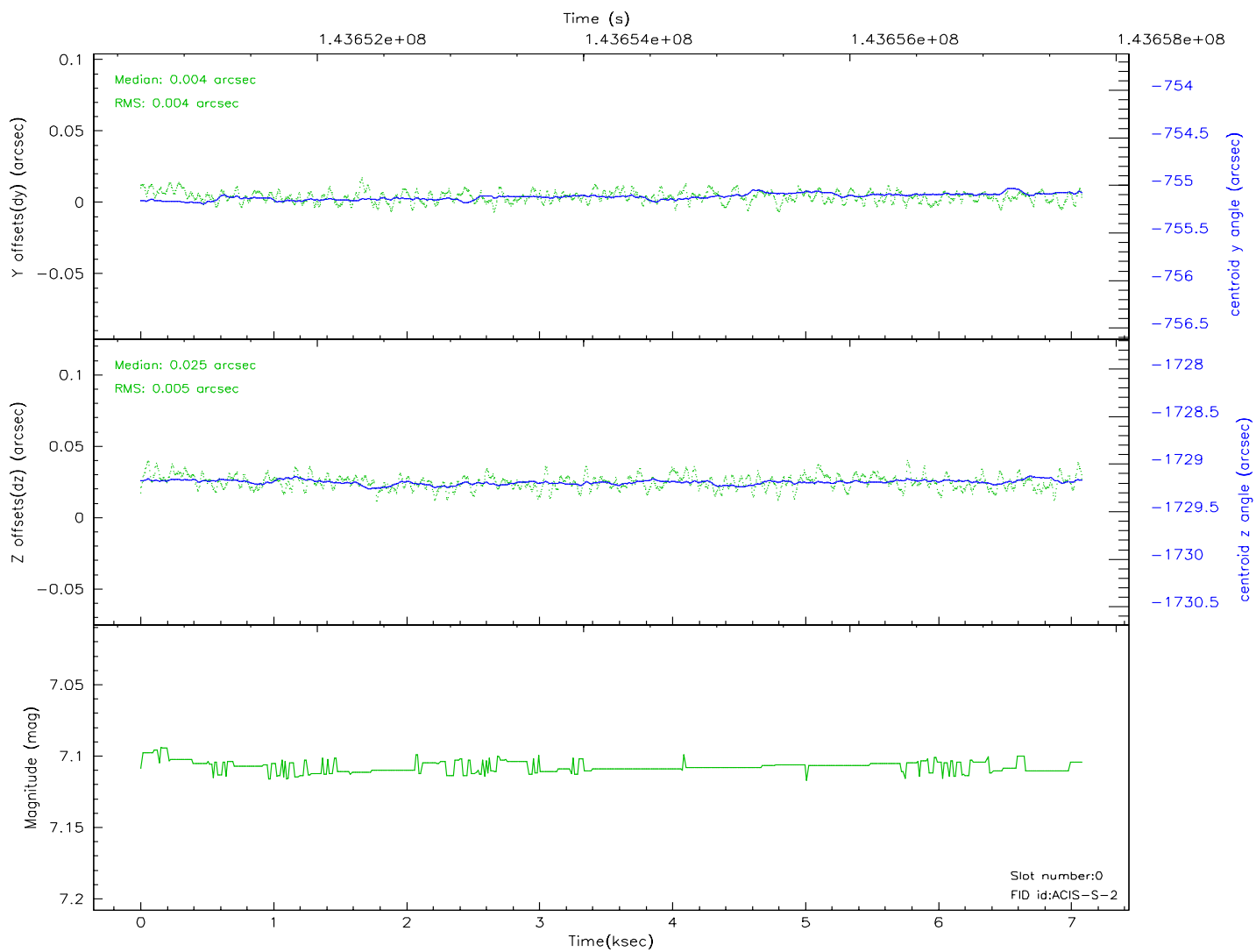
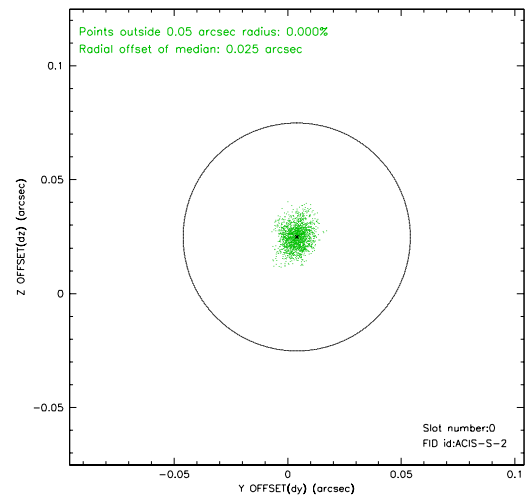
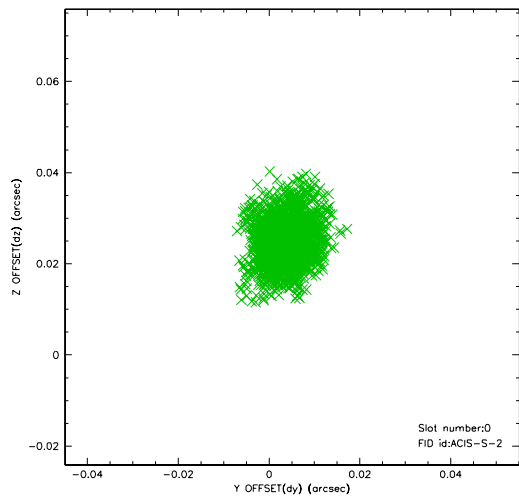


2.4.5 Slot 7

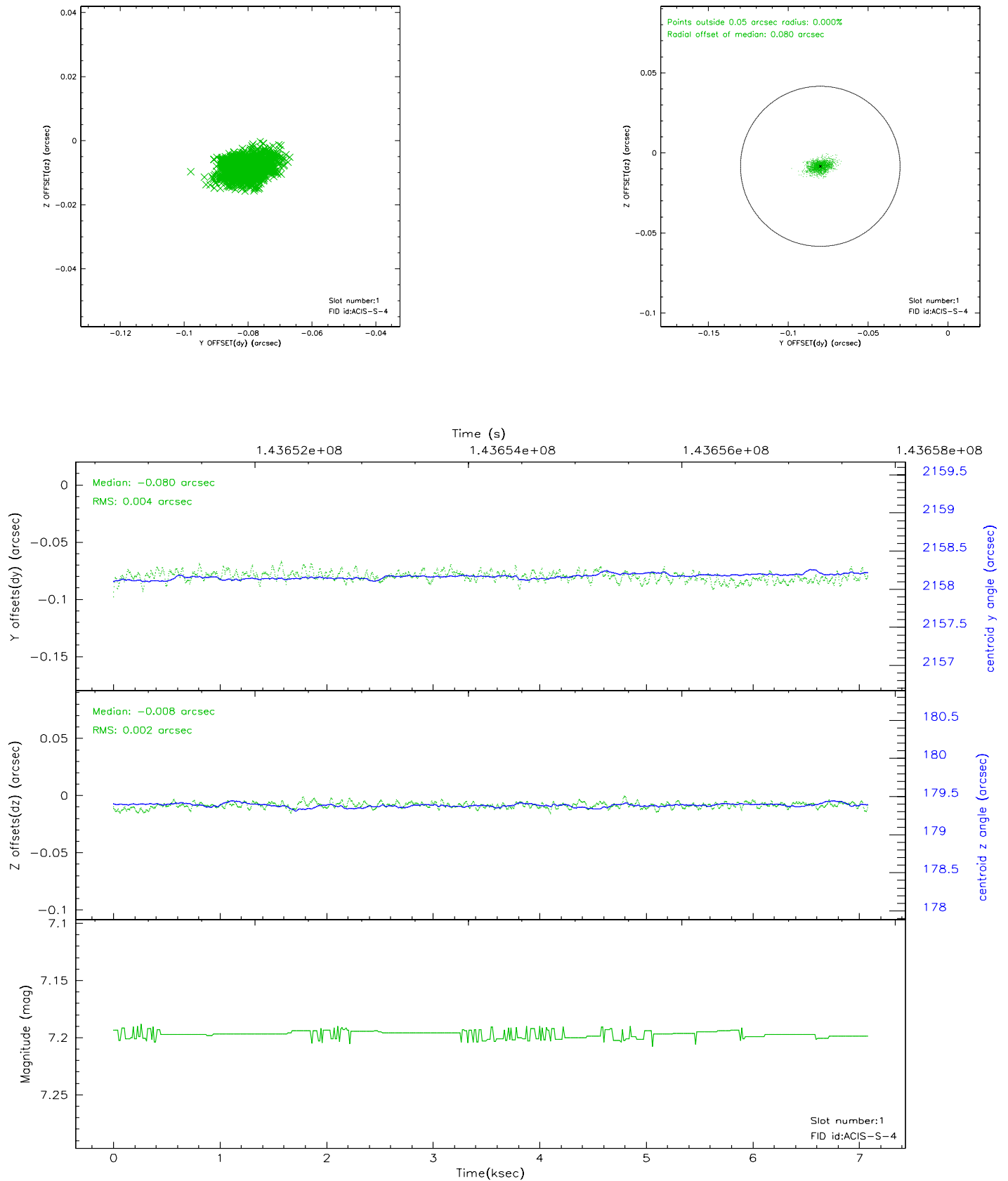


2.5 FID Slots

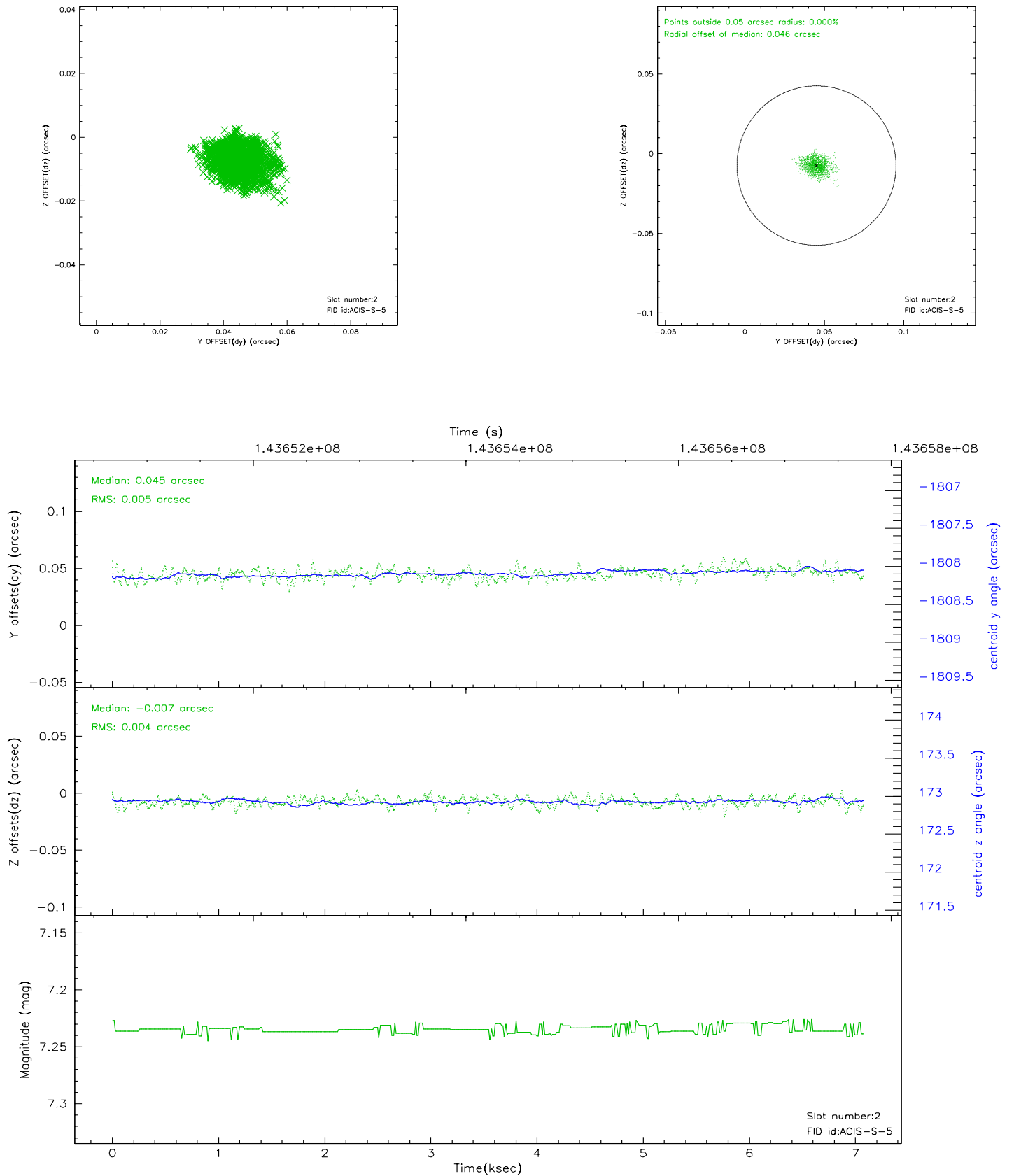
2.5.1 Slot 0



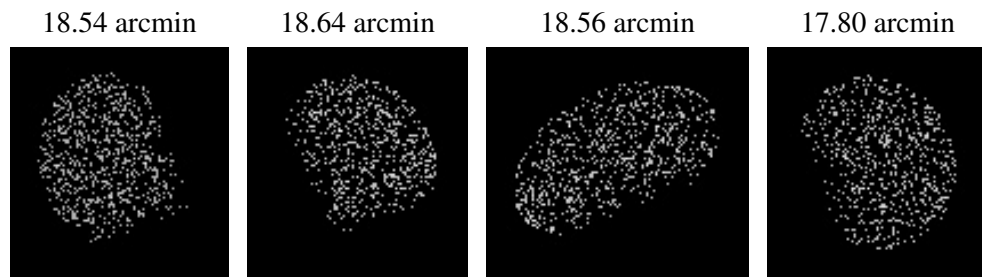
2.5.2 Slot 1



2.5.3 Slot 2



3 Point Sources



A Summary

A.1 Status

V&V Scientist	Jen Lauer
V&V Date (YYYY-MM-DD)	2006.09.26
V&V Edition	1
V&V Disposition and Status	OK
V&V Charge Time	6.659

A.2 Comments