

V&V Reference Report

L2 ASCDS Version : 8.4.5

Observation 2845 - L2 Version 3
Chandra X-Ray Center

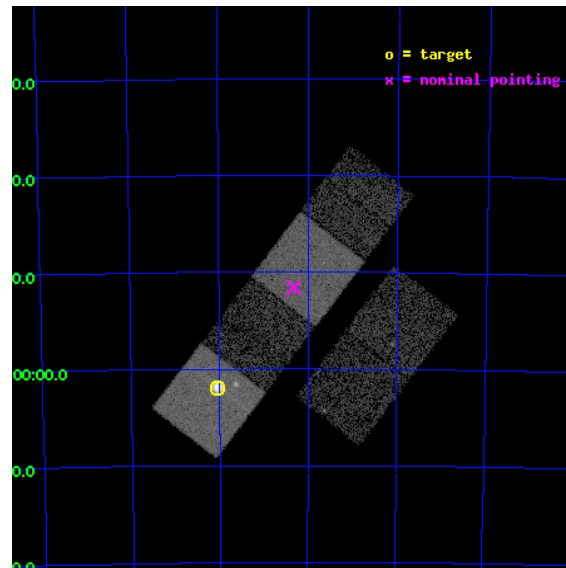
L2 Processing Date : Sep 28 2012

Contents

1	Front	2
2	OBI	3
2.1	OBI	3
2.1.1	Images	3
2.1.2	Bias	3
2.1.3	Parameters	4
2.1.4	Events	4
2.2	Compared Parameters	5
2.3	Aspect	6
2.4	Star Slots	9
2.4.1	Slot 3	9
2.4.2	Slot 4	10
2.4.3	Slot 5	11
2.4.4	Slot 6	12
2.4.5	Slot 7	13
2.5	FID Slots	14
2.5.1	Slot 0	14
2.5.2	Slot 1	15
2.5.3	Slot 2	16
A	Summary	17
A.1	Status	17
A.2	Comments	17

1 Front

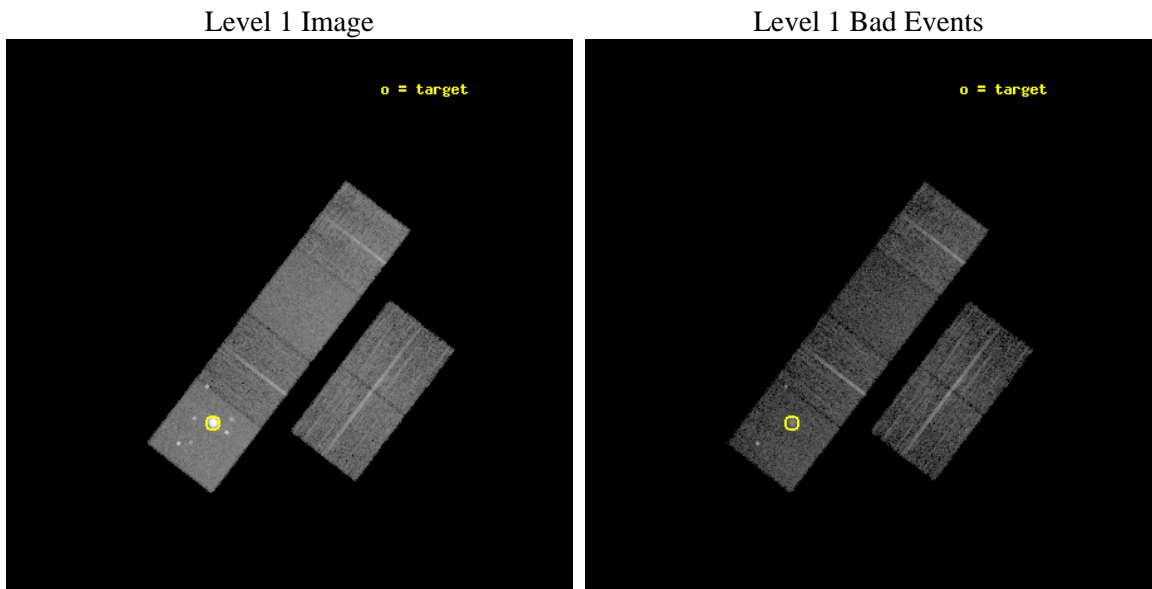
seq_num	590234	Sequence number
obs_id	2845	Observation id
title	AO3A ACIS-S CALIBRATION OBSERVATIONS OF E0102-72	Proposal title
observer	Dr. CXC Calibration	Principal investigator
object	E0102-72.3 [Chip S1, T=120, Offsets=13,0,0]	Source name
dtcycle	0	
cycle	P	events from which exps? Prim/Second/Both
ra_targ	16.01	Observer's specified target RA [deg]
dec_targ	-72.032028	Observer's specified target Dec [deg]
ra_nom	15.579317112508	Nominal RA [deg]
dec_nom	-71.860380513203	Nominal Dec [deg]
roll_nom	307.38042342558	Nominal Roll [deg]
revision	3	Processing version of data
ontime	7558.4000070244	Sum of GTIs [s]
livetime	7462.6909950134	Livetime [s]
ontime2	7558.4000070244	Sum of GTIs [s]
ontime3	7558.4000070244	Sum of GTIs [s]
ontime5	7558.4000070244	Sum of GTIs [s]
ontime6	7558.4000070244	Sum of GTIs [s]
ontime7	7558.4000070244	Sum of GTIs [s]
ontime8	7555.1591763645	Sum of GTIs [s]
l2events	125900	Number of level 2 events



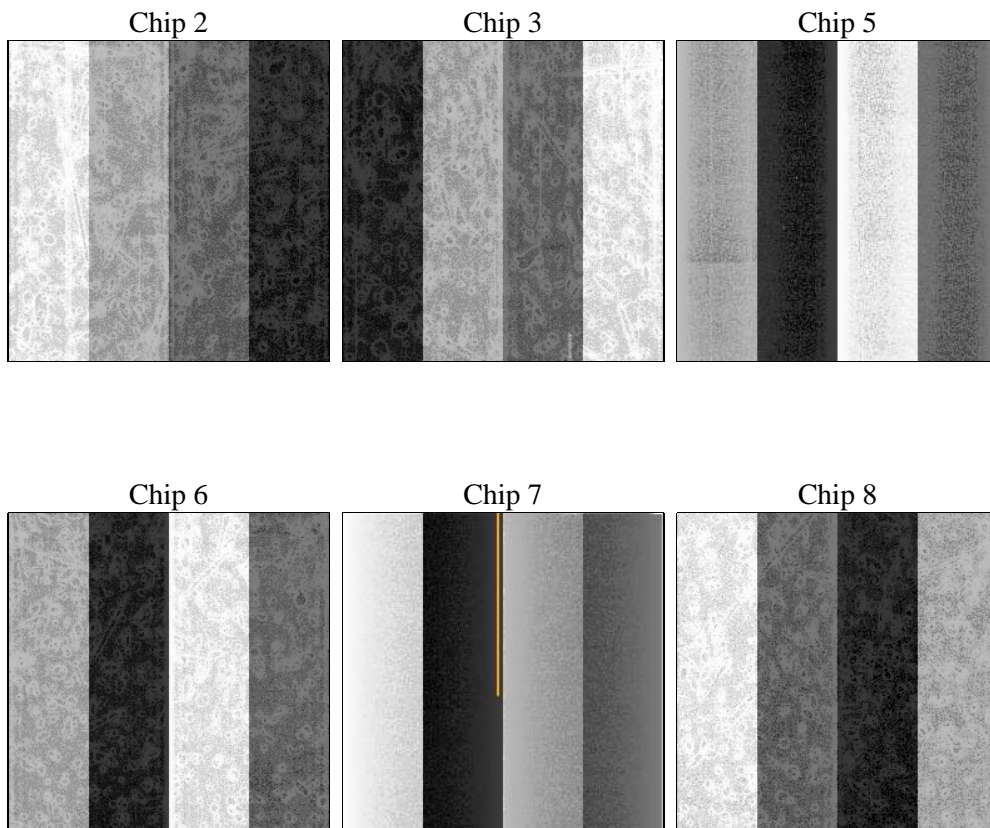
2 OBI

2.1 OBI

2.1.1 Images



2.1.2 Bias



2.1.3 Parameters

obi_num	1	Obi number	sched_exp_time	7800.000000	[s] Scheduled observation exposure time
ascdsver	8.4.5	Processing system revision	ontime	7558.4000070244	Sum of GTIs [s]
caldsver	4.5.2	 	ontime2	7558.4000070244	Sum of GTIs [s]
date	2012-09-28T06:39:29	Date and time of file creation	ontime3	7558.4000070244	Sum of GTIs [s]
revision	3	Processing version of data	ontime5	7558.4000070244	Sum of GTIs [s]
			ontime6	7558.4000070244	Sum of GTIs [s]
			ontime7	7558.4000070244	Sum of GTIs [s]
			ontime8	7555.1591763645	Sum of GTIs [s]
			l1events	394370	Number of level 1 events

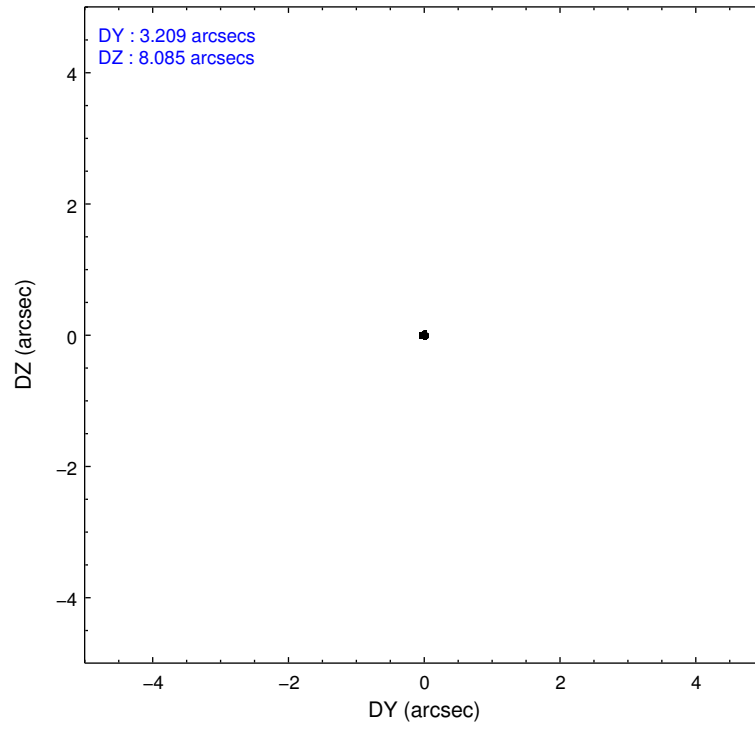
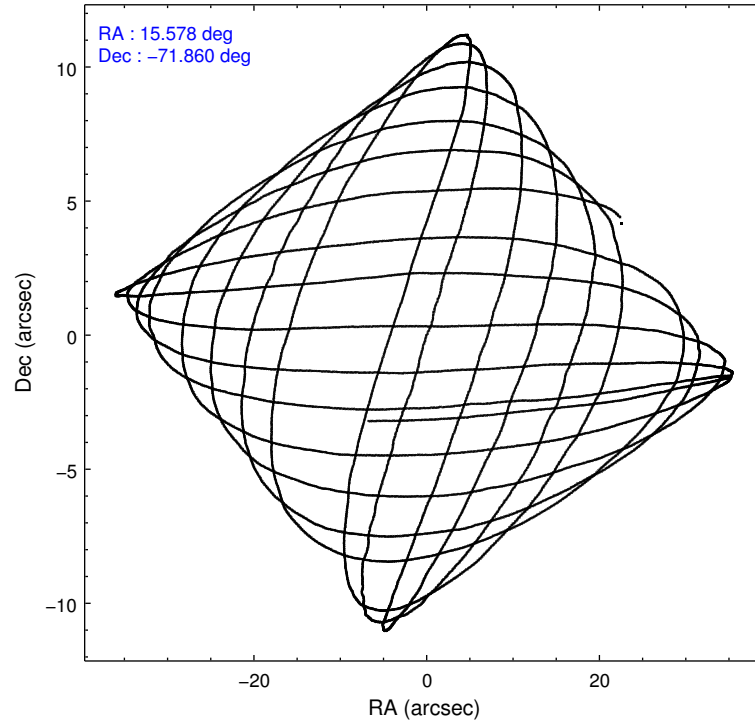
2.1.4 Events

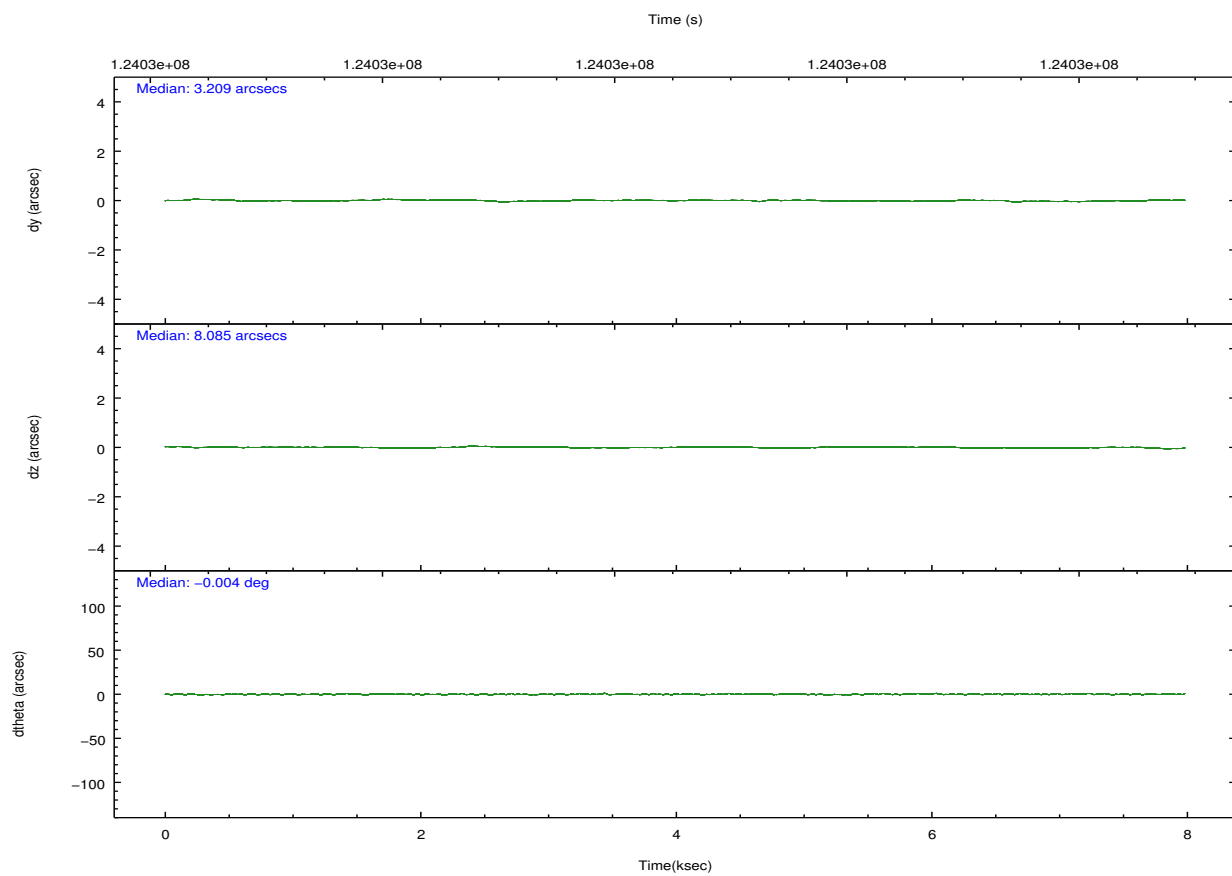
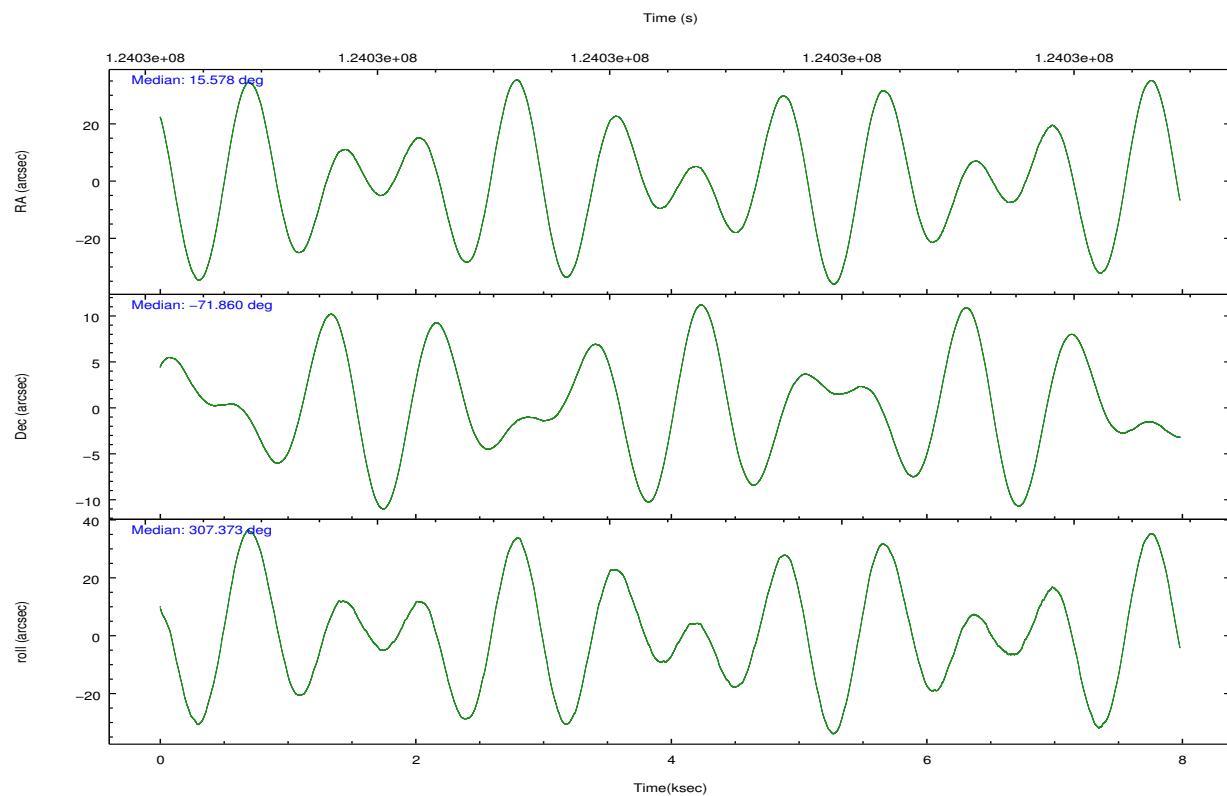
	ccd 2	ccd 3	ccd 5	ccd 6	ccd 7	ccd 8		ccd 2	ccd 3	ccd 5	ccd 6	ccd 7	ccd 8
level 1 events	49285	46944	124605	48056	63207	62273	grade 0 events	2530	2474	29640	2474	2768	3875
rejected events	43666	41285	38967	42188	36088	50082		5%	5%	23%	5%	4%	6%
rejected %	88%	87%	31%	87%	57%	80%	grade 1 events	22	24	328	23	48	42
								0%	0%	0%	0%	0%	0%
							grade 2 events	1146	1144	23531	1162	5399	2667
								2%	2%	18%	2%	8%	4%
							grade 3 events	529	528	5832	566	2373	1196
								1%	1%	4%	1%	3%	1%
							grade 4 events	506	525	5856	553	2378	1187
								1%	1%	4%	1%	3%	1%
							grade 5 events	1582	1815	6086	2065	5947	2569
								3%	3%	4%	4%	9%	4%
							grade 6 events	912	992	20848	1117	14216	3273
								1%	2%	16%	2%	22%	5%
							grade 7 events	42058	39442	32484	40096	30078	47464
								85%	84%	26%	83%	47%	76%

2.2 Compared Parameters

Parameter	Planned	Actual	Parameter	Planned	Actual
Instrument	ACIS	ACIS	Obspar format version number	7	7
Detector	ACIS-235678	ACIS-235678	Obspar file type	PREDICTED	ACTUAL
Grating	NONE	NONE	Obspar update status	NONE	UPDATED
Data mode	FAINT	FAINT	Number of optional ACIS chips dropped	0	0
Observation mode	POINTING	POINTING	On-chip summing requested	N	N
[deg] Pointing RA	15.498095	15.57931711250802	Subarray requested	NONE	NONE
[deg] Pointing Dec	-71.850193	-71.86038051320327	Alternating exposures requested	N	N
[deg] Pointing Roll	307.146620	307.3804234255758	[s] Primary exposure time	0.000000	3.2
[s] Window start time (MET)	123552064.184000	123552064.184000			
[s] Window stop time (MET)	126144064.184000	126144064.184000			
[mm] SIM focus pos	-0.684267	-0.6828225247311905			
[mm] SIM defocus	0	0.001444936568705701			
[mm] SIM translation stage pos	-190.132523	-190.1425803651734			
[mm] SIM translation stage offset	0	0.01005778216563158			
[s] Observation start time (MET)	124026709.184000	124026332.82351			
Observation start date	2001-12-06T11:50:45	2001-12-06T11:45:32			
[s] Observation end time (MET)	124034509.184000	124035266.21137			
Observation end date	2001-12-06T14:00:45	2001-12-06T14:14:26			
Read mode	TIMED	TIMED			

2.3 Aspect



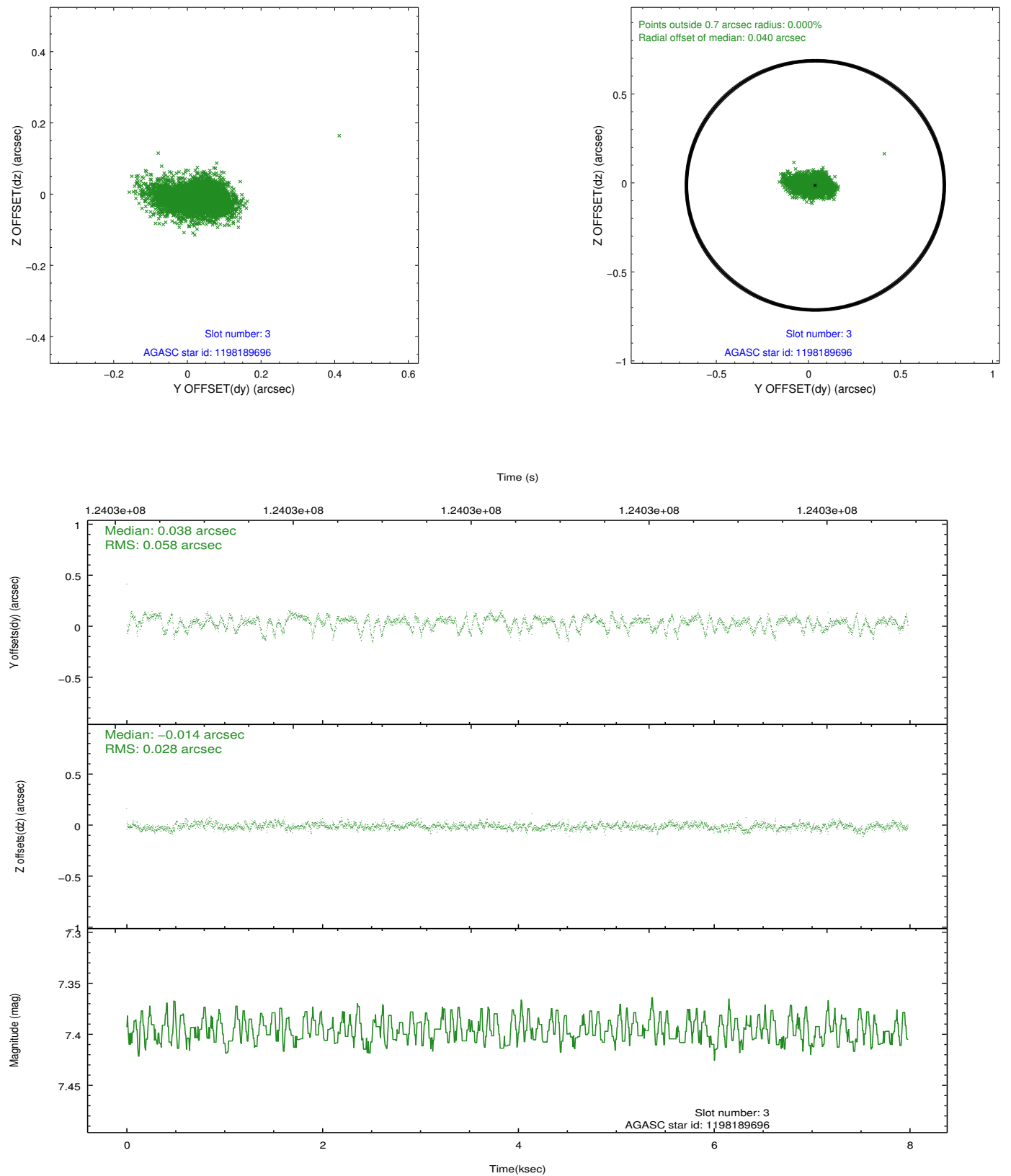


Slot Statistics

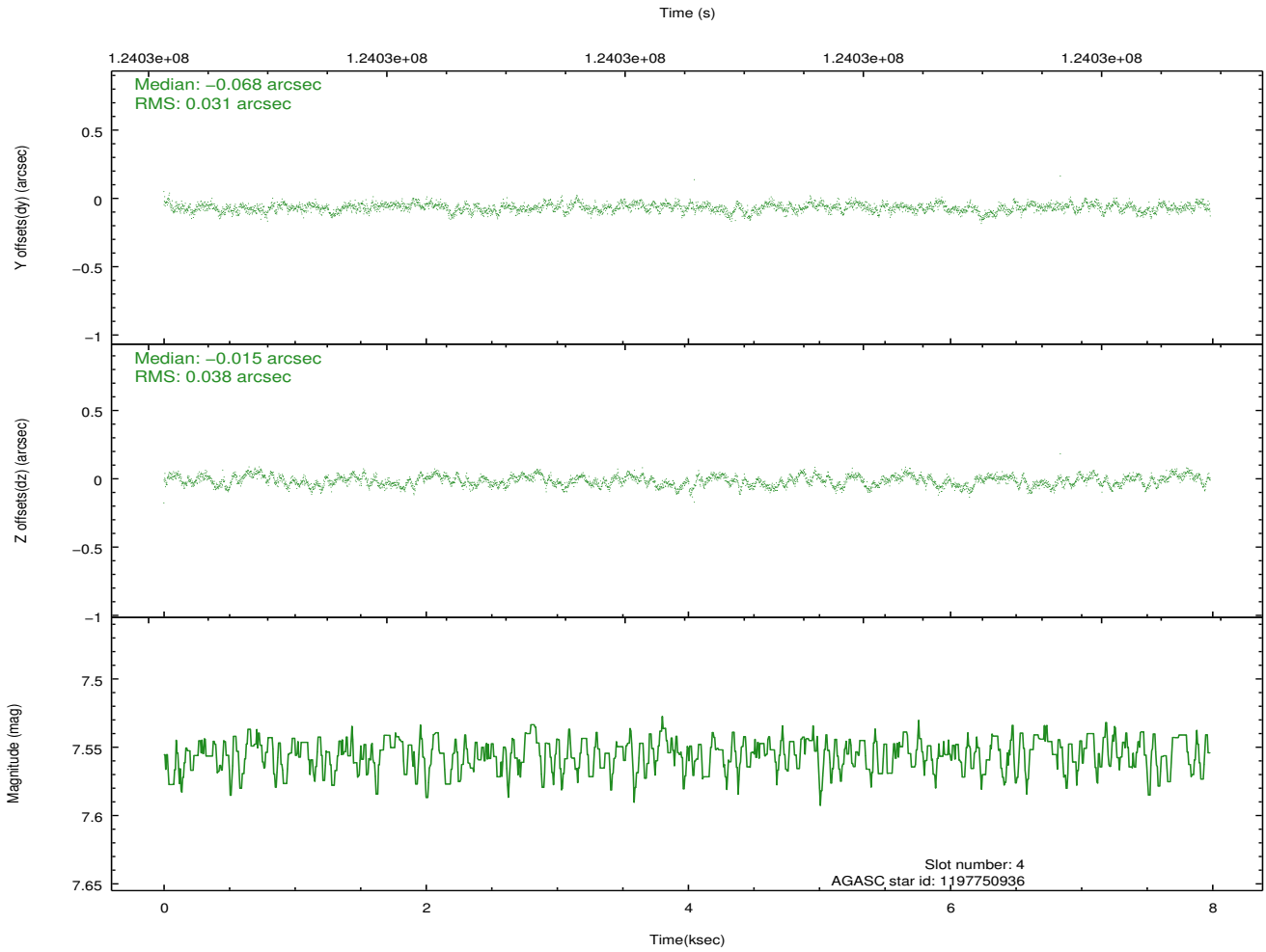
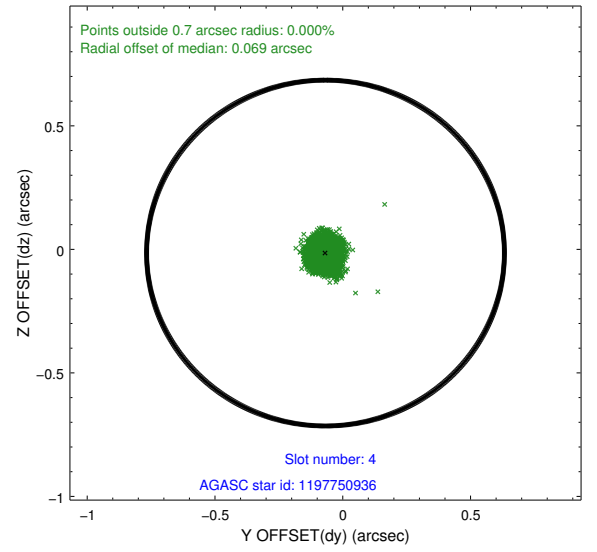
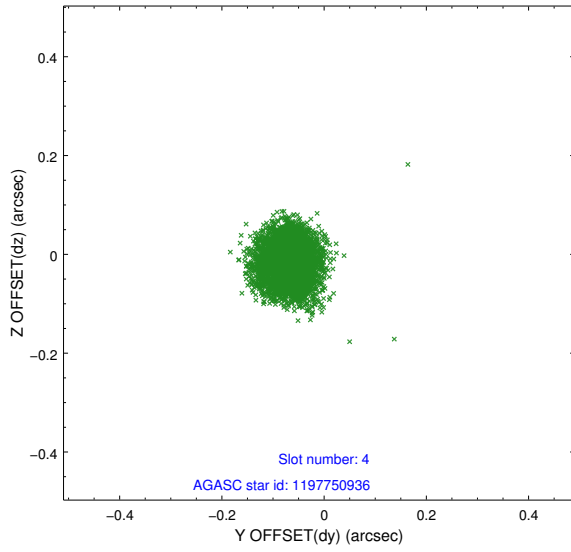
slot	status	id	mag	n_pts	med_dy	med_dz	dr1	dr2	ra	dec	mean_y	mean_z
0	FID	ACIS-S-2	7.11	1947	-0.003	-0.002	0.006	0.011	0.000000	0.000000	-755.87	-1729.22
1	FID	ACIS-S-4	7.20	1947	-0.033	0.002	0.006	0.010	0.000000	0.000000	2157.07	178.52
2	FID	ACIS-S-5	7.24	1947	0.004	0.009	0.007	0.011	0.000000	0.000000	-1807.78	173.03
3	GUIDE	1198189696	7.40	3895	0.038	-0.014	0.064	0.120	15.223750	-72.697522	2255.57	-2075.46
4	GUIDE	1197750936	7.55	3895	-0.068	-0.015	0.052	0.081	15.387940	-71.549550	-937.29	553.67
5	GUIDE	1197884536	8.49	3891	0.013	0.069	0.068	0.107	17.160729	-71.835289	1104.58	1505.29
6	GUIDE	1197878768	9.63	3893	0.050	-0.018	0.107	0.171	16.656786	-71.304581	-747.48	2245.34
7	GUIDE	1197750160	10.25	3891	-0.028	-0.016	0.150	0.245	12.997994	-71.773722	-1871.78	-2111.04

2.4 Star Slots

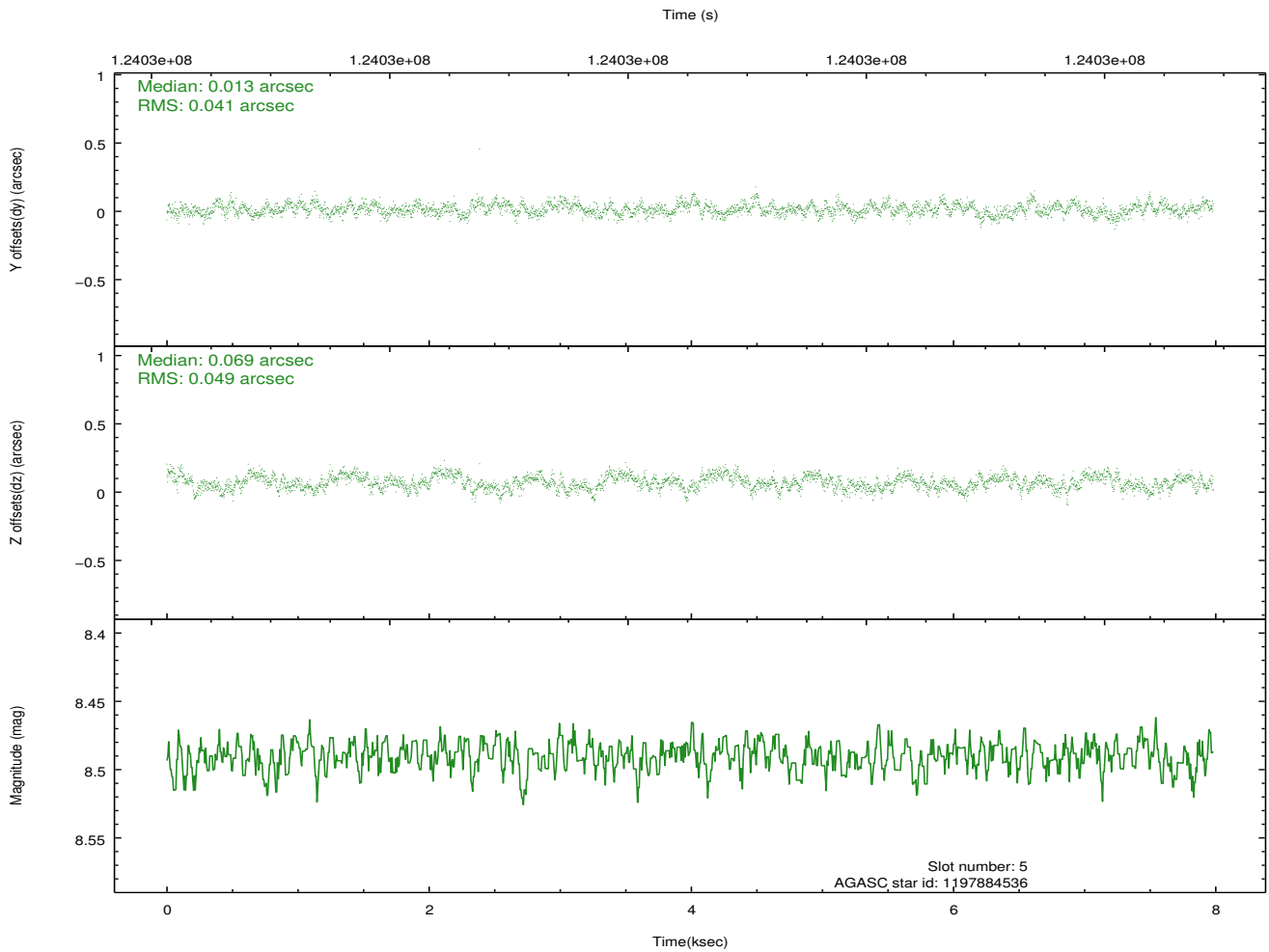
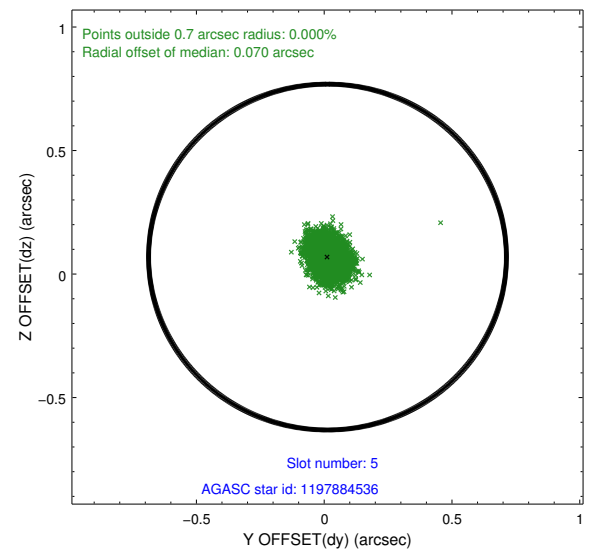
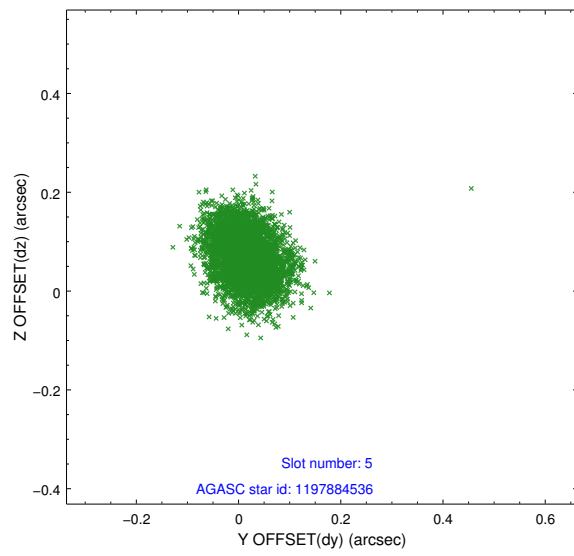
2.4.1 Slot 3



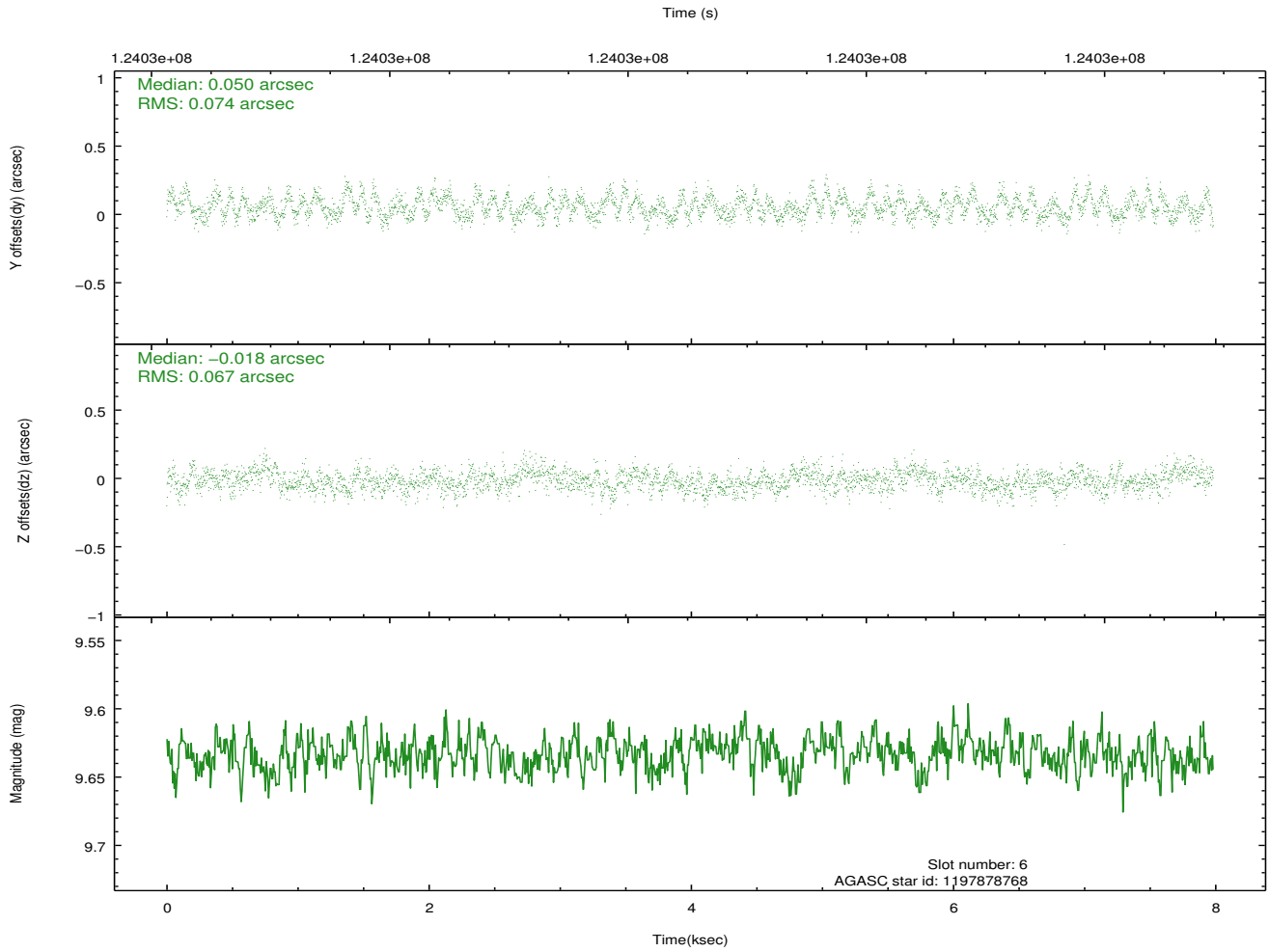
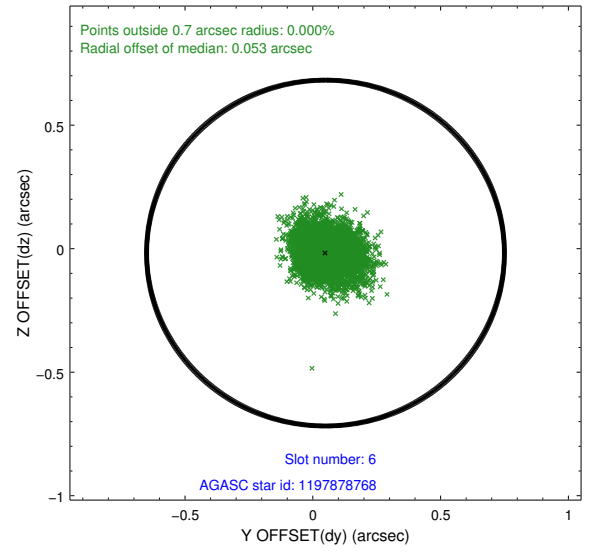
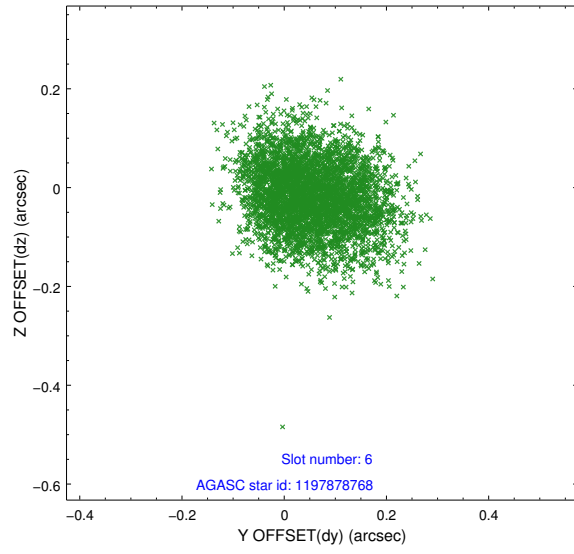
2.4.2 Slot 4



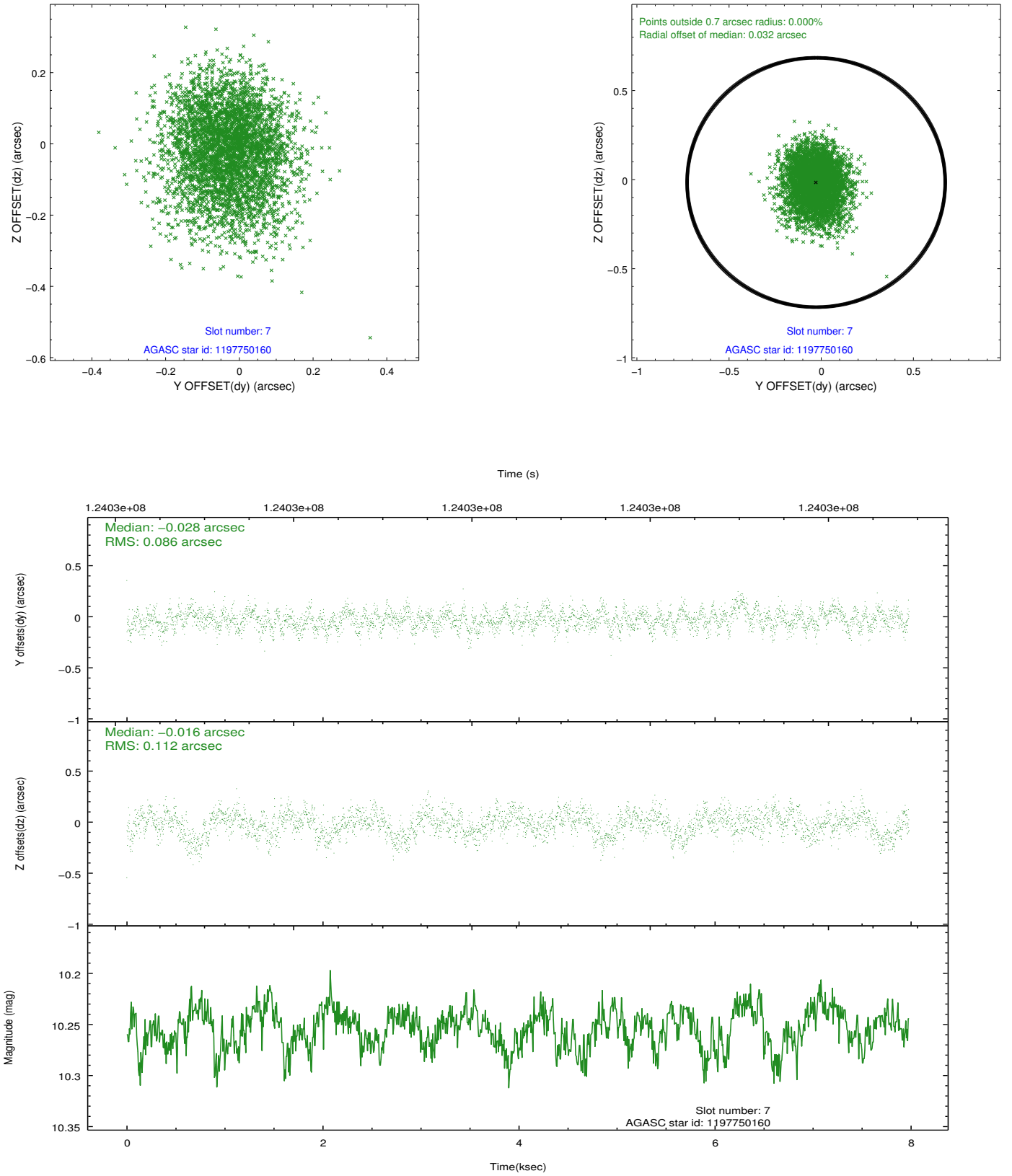
2.4.3 Slot 5



2.4.4 Slot 6

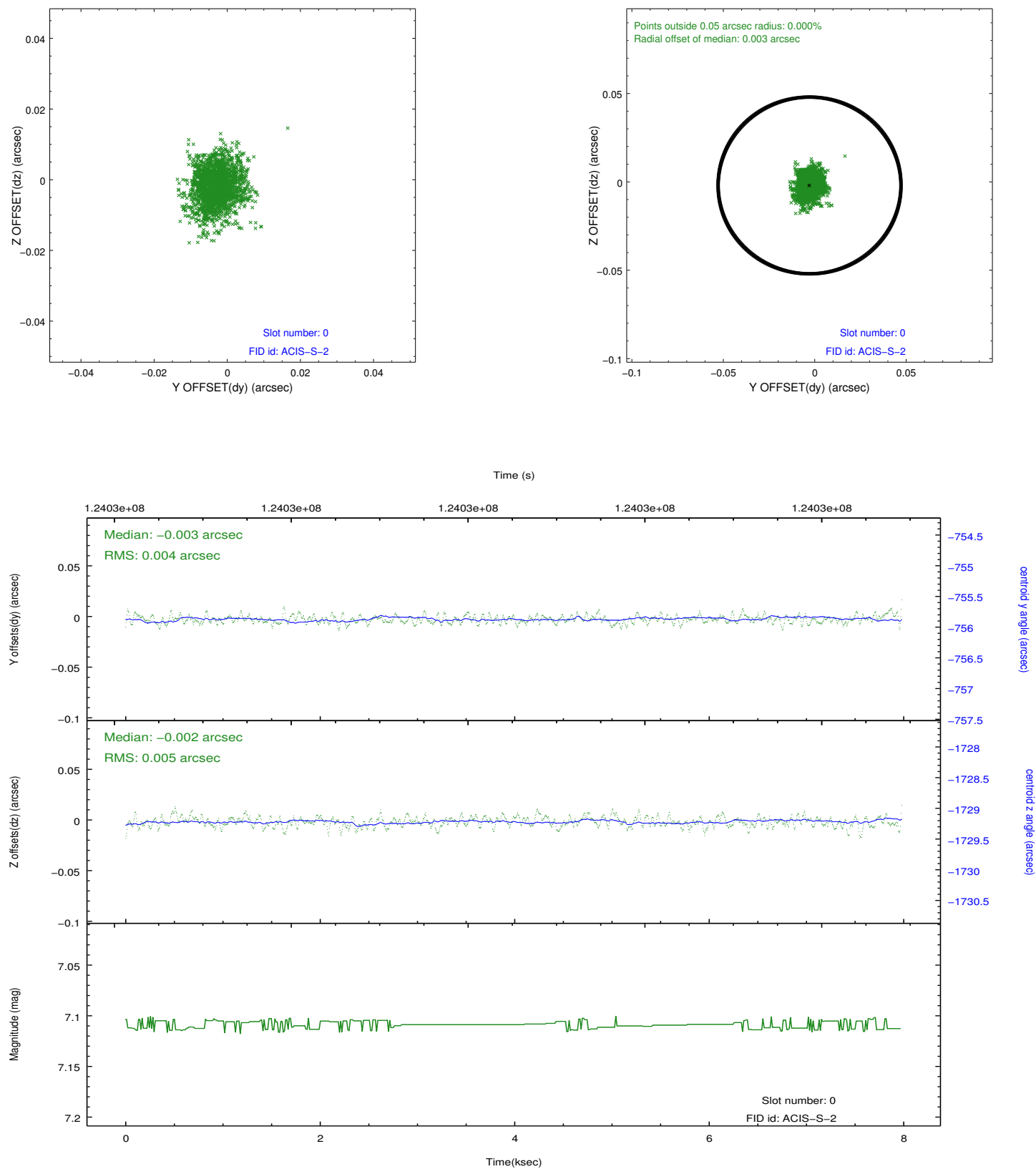


2.4.5 Slot 7

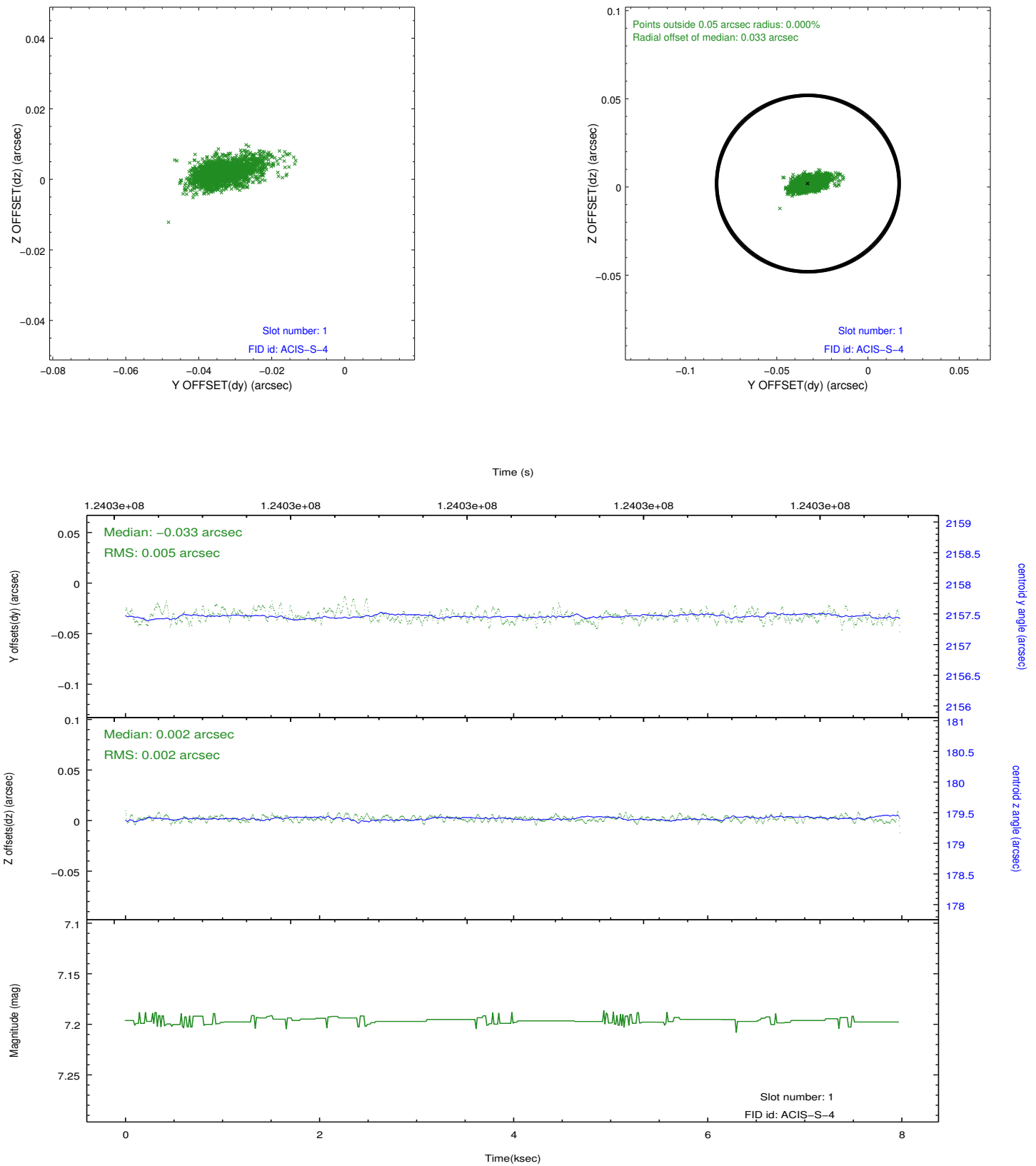


2.5 FID Slots

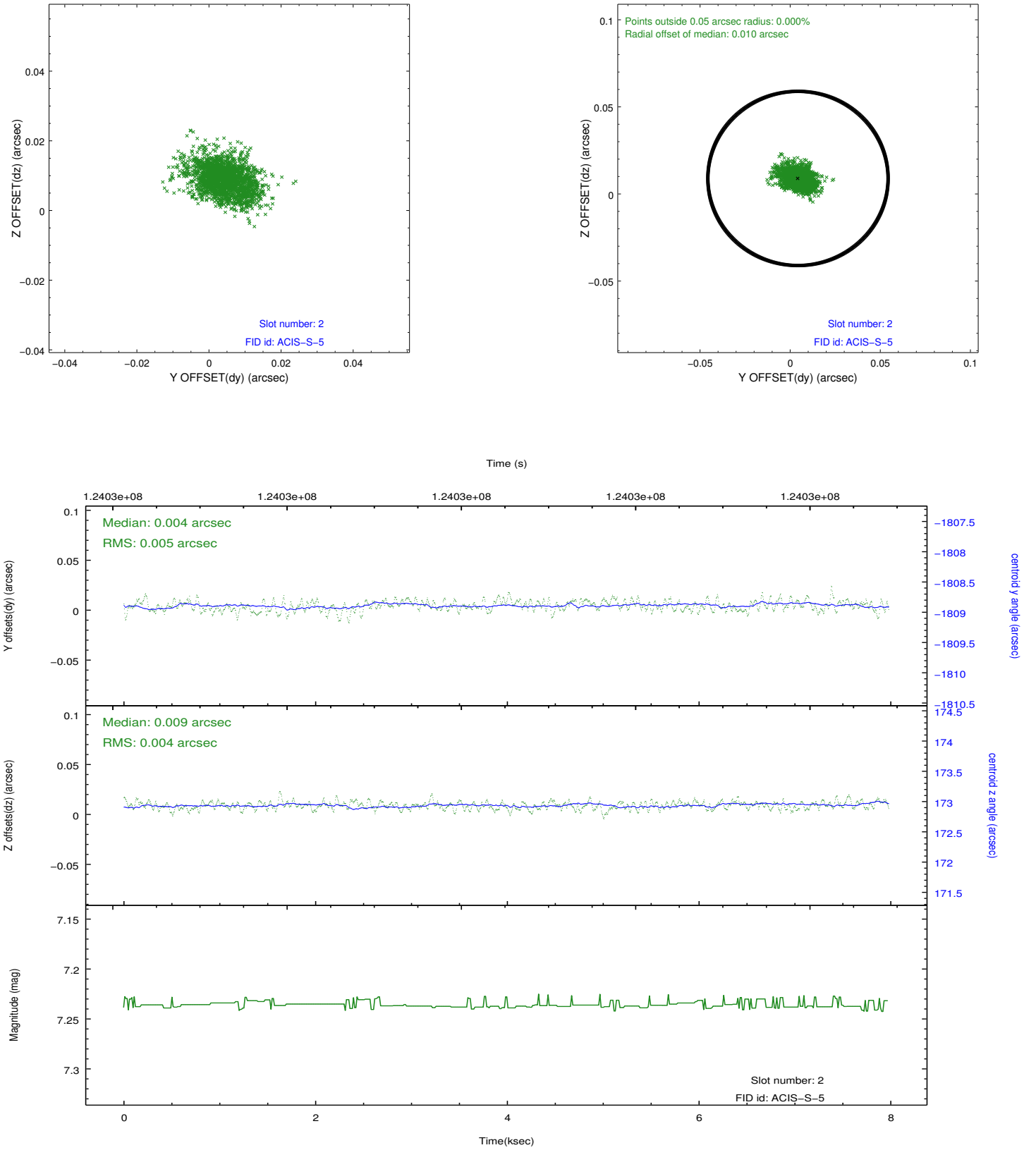
2.5.1 Slot 0



2.5.2 Slot 1



2.5.3 Slot 2



A Summary

A.1 Status

V&V Scientist	Jen Lauer
V&V Date (YYYY-MM-DD)	2012.09.28
V&V Edition	1
V&V Disposition and Status	OK
V&V Charge Time	7.561

A.2 Comments

Window constraint met.