

V&V Reference Report

L2 ASCDS Version : 7.6.10

Observation 2795 - L2 Version 001
Chandra X-Ray Center

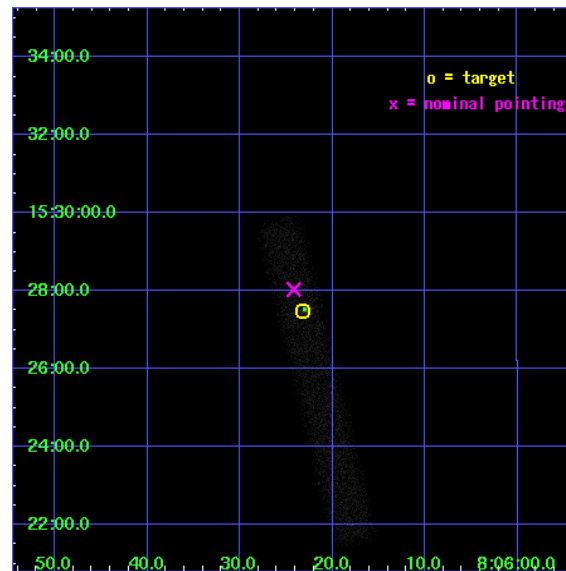
L2 Processing Date : Jan 12 2007

Contents

1	Front	2
2	OBI	3
2.1	OBI	3
2.1.1	Images	3
2.1.2	Bias	3
2.1.3	Parameters	4
2.1.4	Events	4
2.2	Compared Parameters	5
2.3	Aspect	6
2.4	Star Slots	9
2.4.1	Slot 3	9
2.4.2	Slot 4	10
2.4.3	Slot 5	11
2.4.4	Slot 6	12
2.4.5	Slot 7	13
2.5	FID Slots	14
2.5.1	Slot 0	14
2.5.2	Slot 1	15
2.5.3	Slot 2	16
3	Point Sources	17
A	Summary	18
A.1	Status	18
A.2	Comments	18

1 Front

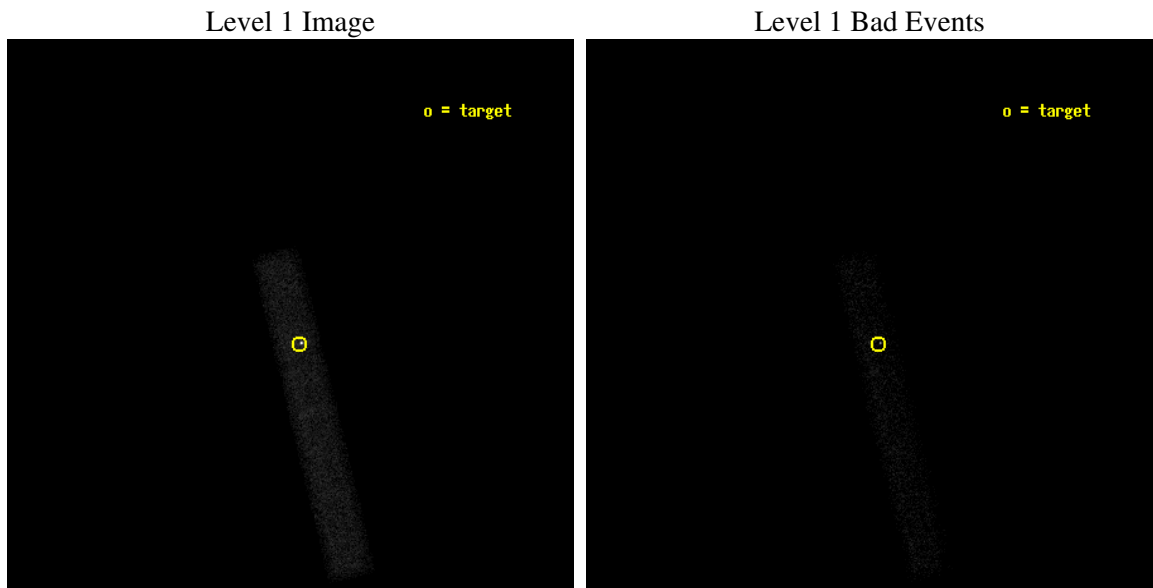
seq_num	500245
obs_id	2795
title	CHANDRA OBSERVATIONS OF RXJ0806.3+1527: X-RAY STUDY OF A UNIQUE X-RAY PULSATOR
observer	Dr. GianLuca Israel
object	RXJ0806.3+1527
dtcycle	0
cycle	P
ra_targ	121.596667
dec_targ	15.458444
ra_nom	121.60073175734
dec_nom	15.467322464641
roll_nom	76.378312663033
revision	2
ontime	21220.800316215
livetime	19246.145761123
ontime7	21220.800316215
l2events	16678



2 OBI

2.1 OBI

2.1.1 Images



2.1.2 Bias

Chip 7



2.1.3 Parameters

obi_num	0
ascdsver	7.6.10
caldbver	3.3.0
date	2007-01-12T07:03:44
revision	2

sched_exp_time	20600.000000
ontime	21220.800316215
ontime7	21220.800316215
l1events	29930

2.1.4 Events

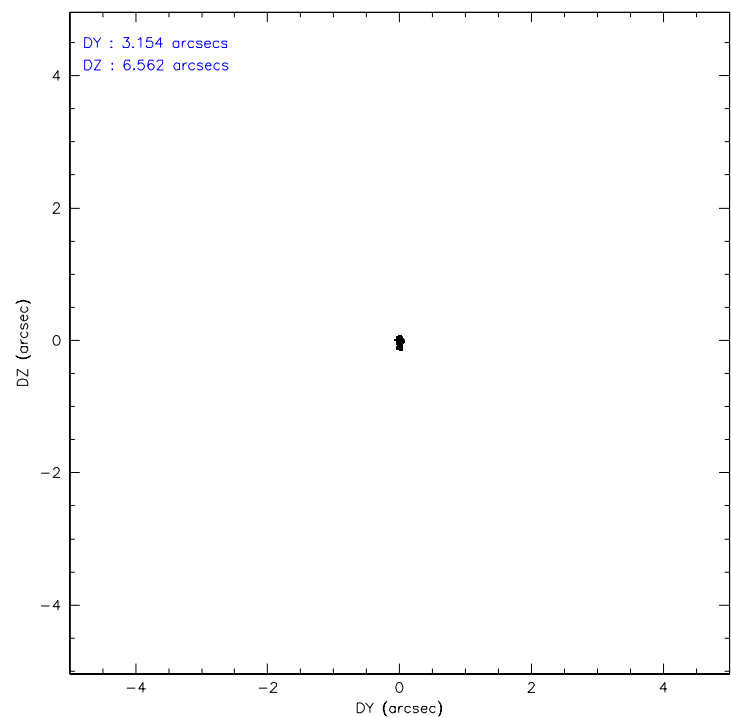
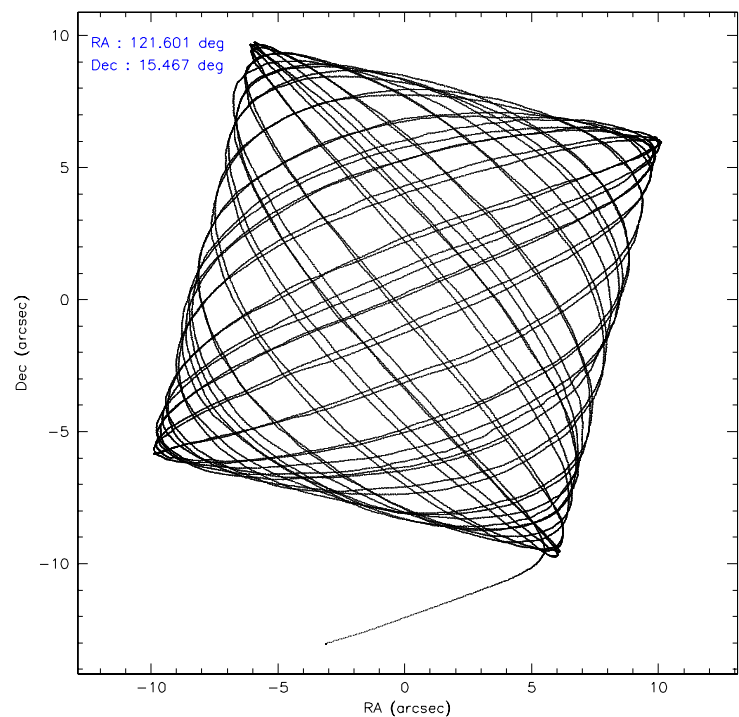
	ccd 7
level 1 events	29930
rejected events	12774
rejected %	42%

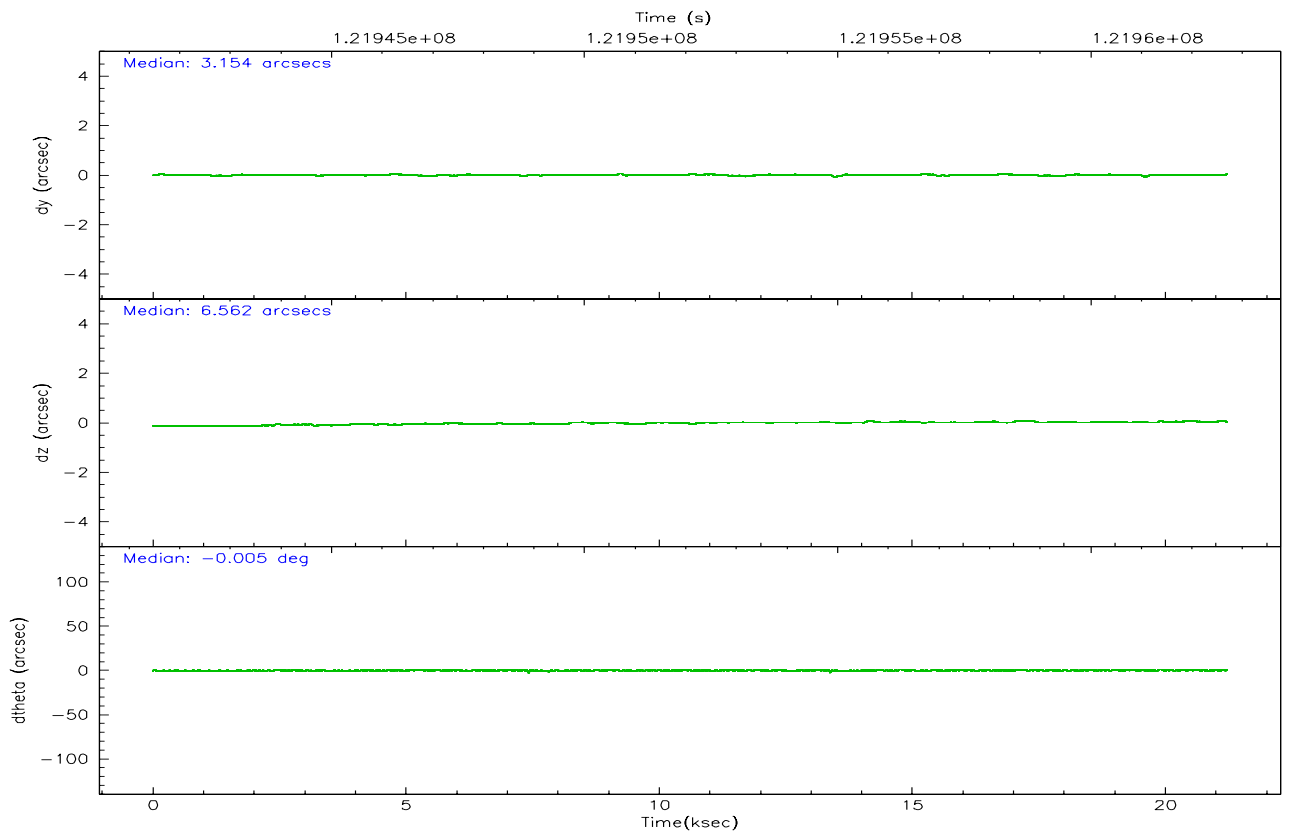
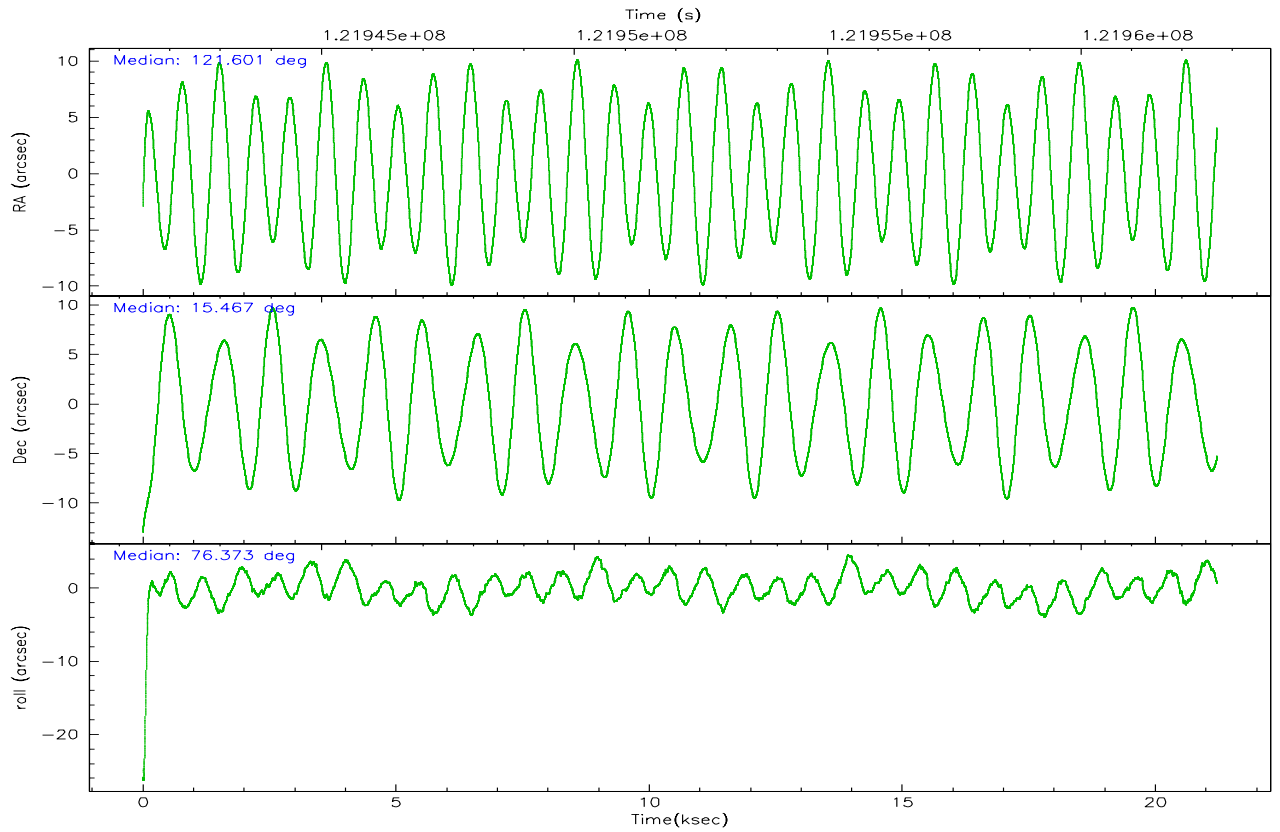
	ccd 7
grade 0 events	4993
	16%
grade 1 events	96
	0%
grade 2 events	3280
	10%
grade 3 events	1966
	6%
grade 4 events	1833
	6%
grade 5 events	2218
	7%
grade 6 events	5267
	17%
grade 7 events	10277
	34%

2.2 Compared Parameters

Parameter	Planned	Actual	Parameter	Planned	Actual
Instrument	ACIS	ACIS	Obspar format version number	6	6
Detector	ACIS-7	ACIS-7	Obspar file type	PREDICTED	ACTUAL
Grating	NONE	NONE	Obspar update status	NONE	UPDATED
Data mode	VFAINT	VFAINT	Number of optional ACIS chips dropped	0	0
Observation mode	POINTING	POINTING	On-chip summing requested	N	N
Pointing RA	121.609030	121.6007317573381	Subarray requested	1/8	1/8
Pointing Dec	15.441279	15.46732246464083	Subarray start row	0	449
Pointing Roll	76.219491	76.37831266303338	Subarray row count	1024	128
SIM focus pos (mm)	-0.684267	-0.6828225247311905	Alternating exposures requested	N	N
SIM defocus (mm)	0	0.001444936568705701	Primary exposure time	0.000000	0.4
SIM translation stage pos (mm)	-190.132523	-190.1425803651734			
SIM translation stage offset (mm)	0	0.01005778216563158			
Observation start time	121942094.184000	121940918.99011			
Observation start date	2001-11-12T08:47:10	2001-11-12T08:28:38			
Observation end time	121962694.184000	121964279.25354			
Observation end date	2001-11-12T14:30:30	2001-11-12T14:57:59			
Read mode	TIMED	TIMED			

2.3 Aspect



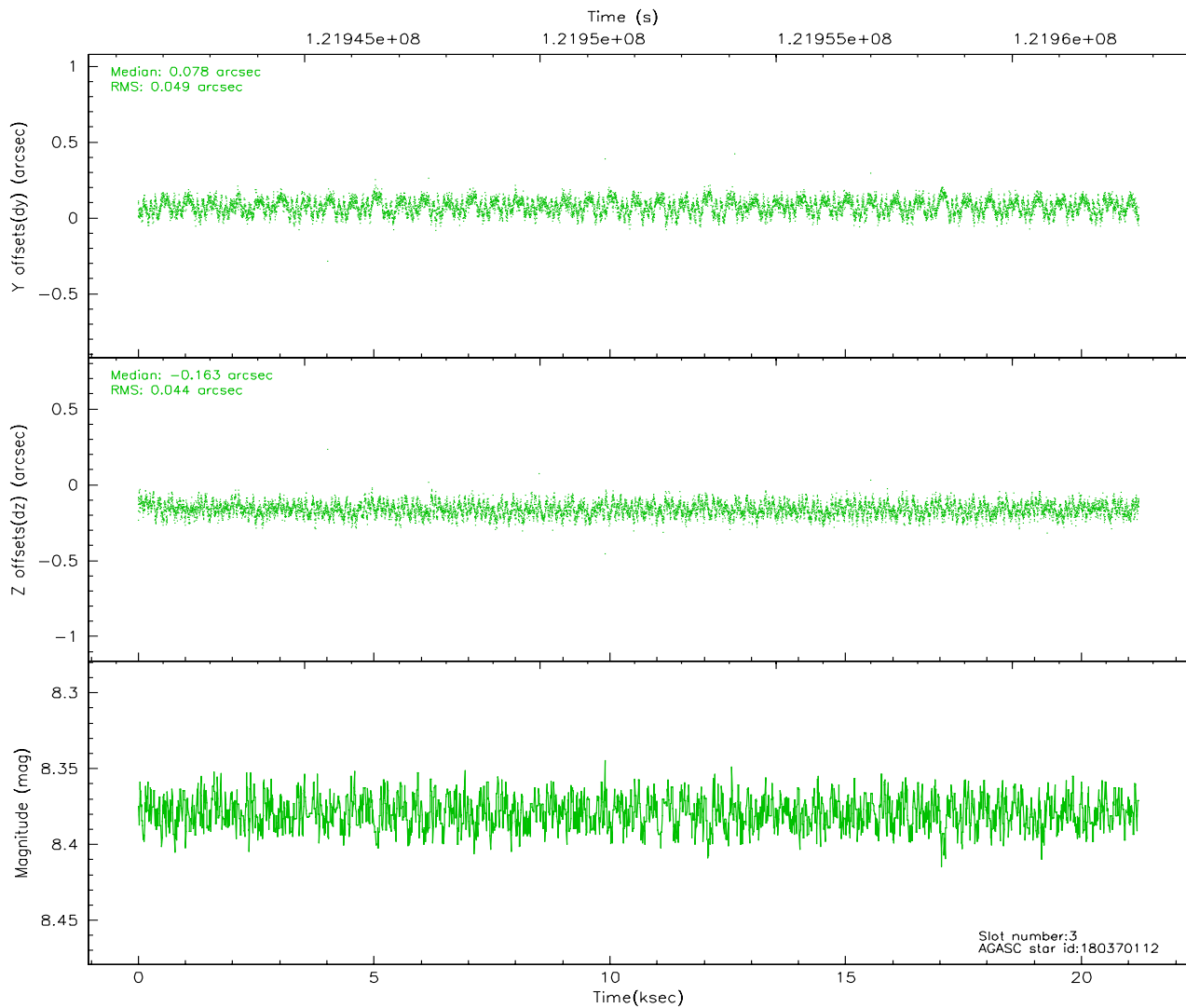
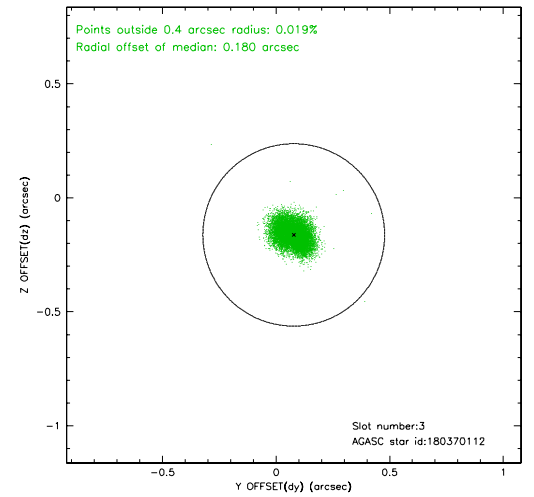
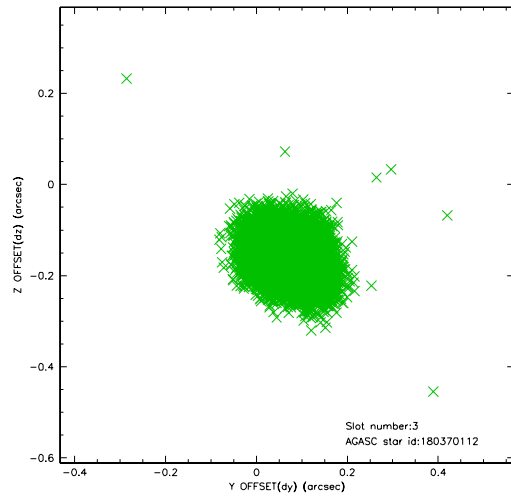


Slot Statistics

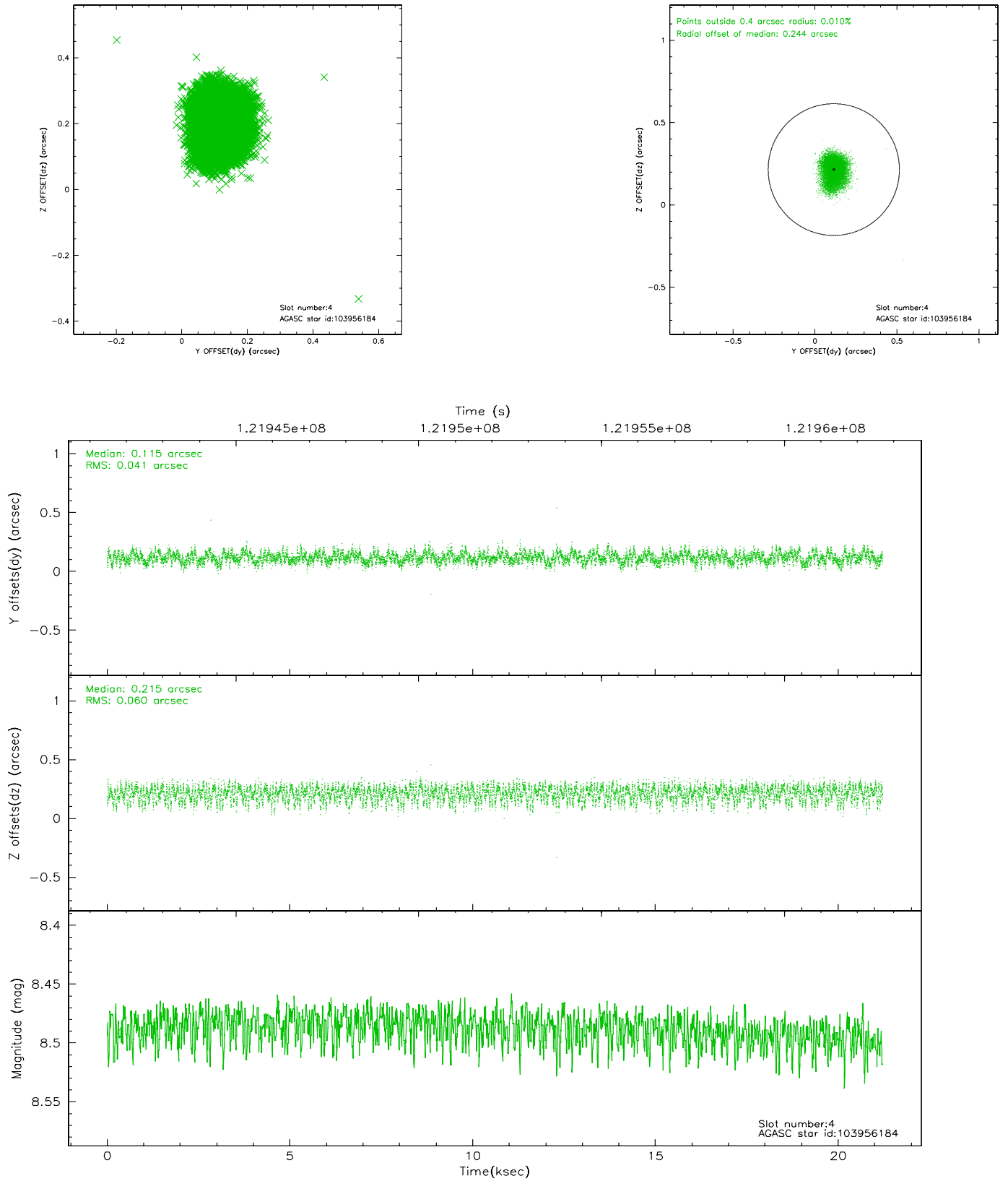
slot	status	id	mag	n_pts	med_dy	med_dz	dr1	dr2	ra	dec	mean_y	mean_z
0	FID	ACIS-S-2	7.11	5176	-0.014	0.034	0.007	0.012	0.000000	0.000000	-755.79	-1727.62
1	FID	ACIS-S-4	7.20	5176	-0.060	-0.003	0.005	0.009	0.000000	0.000000	2157.34	180.69
2	FID	ACIS-S-5	7.24	5175	0.043	-0.023	0.007	0.011	0.000000	0.000000	-1808.39	174.48
3	GUIDE	180370112	8.38	10351	0.078	-0.163	0.072	0.110	121.144488	15.364256	-652.63	1500.97
4	GUIDE	103956184	8.49	10352	0.115	0.215	0.077	0.124	122.093586	14.853591	-1651.47	-2140.46
5	GUIDE	103954656	8.81	10346	0.065	0.294	0.078	0.123	122.085217	14.992315	-1173.80	-1992.42
6	GUIDE	180367416	9.14	10352	-0.005	-0.460	0.084	0.137	120.920648	15.525818	-270.11	2392.20
7	GUIDE	180359160	9.59	10350	-0.256	0.119	0.101	0.160	121.837257	16.020694	2213.81	-269.03

2.4 Star Slots

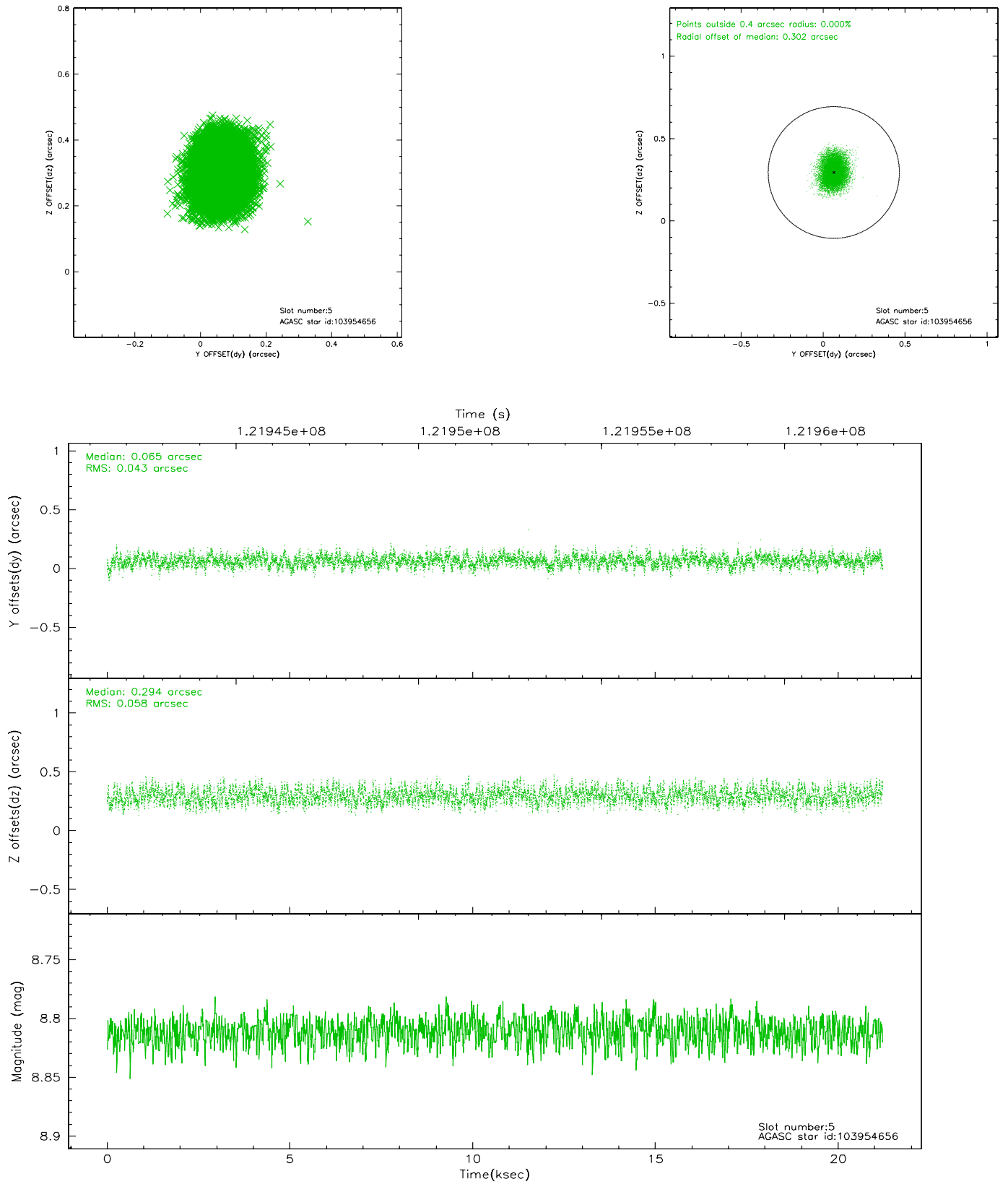
2.4.1 Slot 3



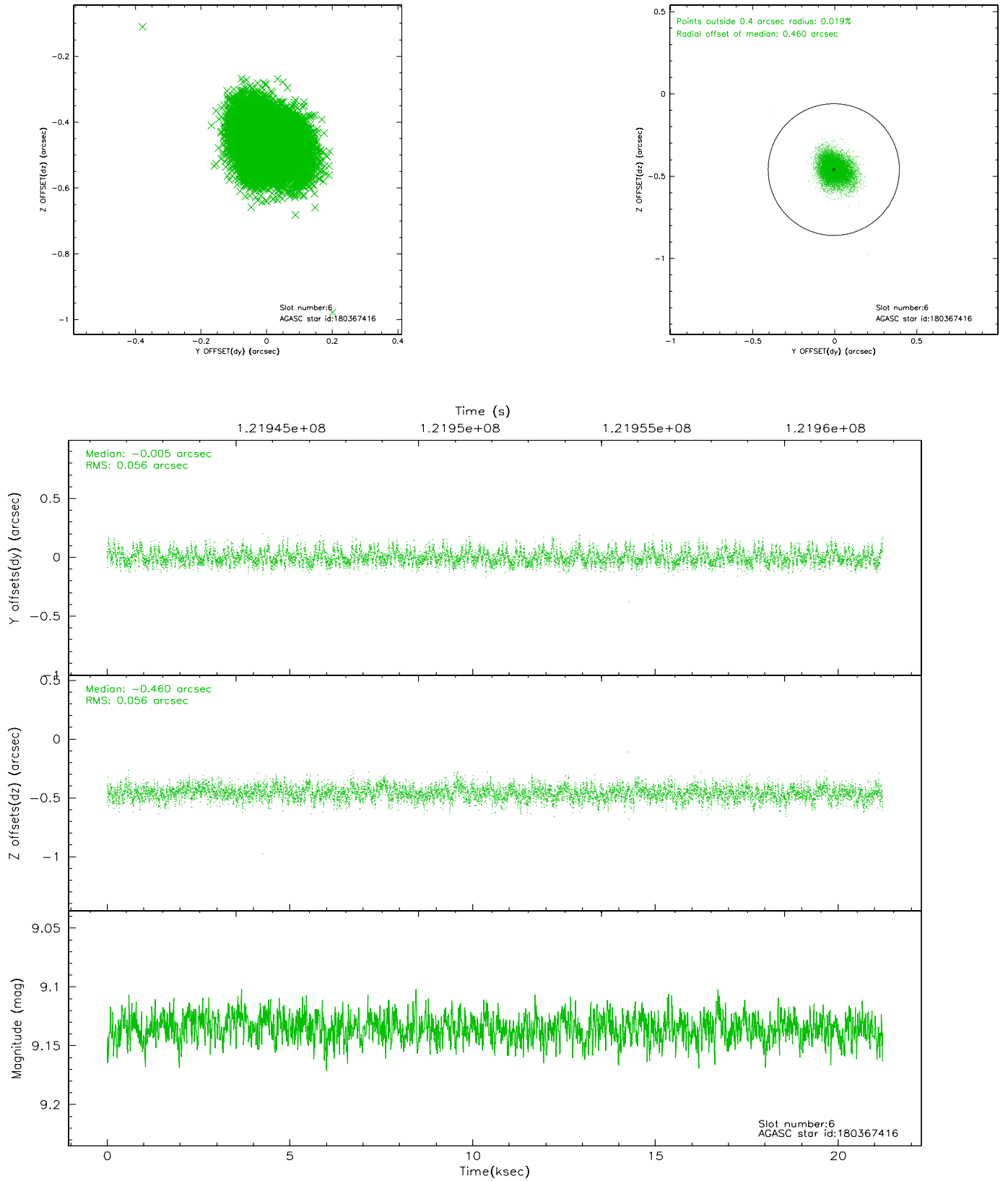
2.4.2 Slot 4



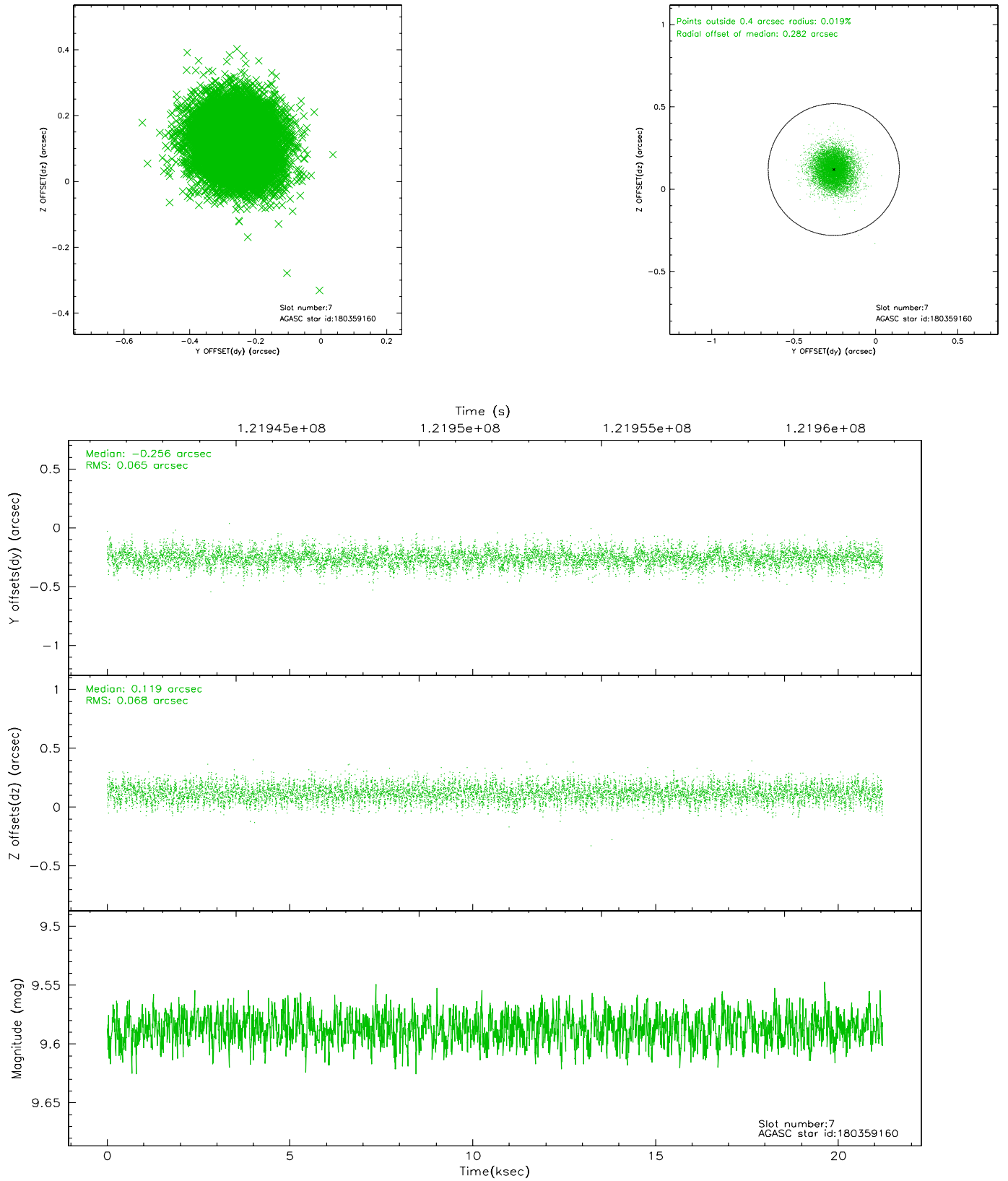
2.4.3 Slot 5



2.4.4 Slot 6

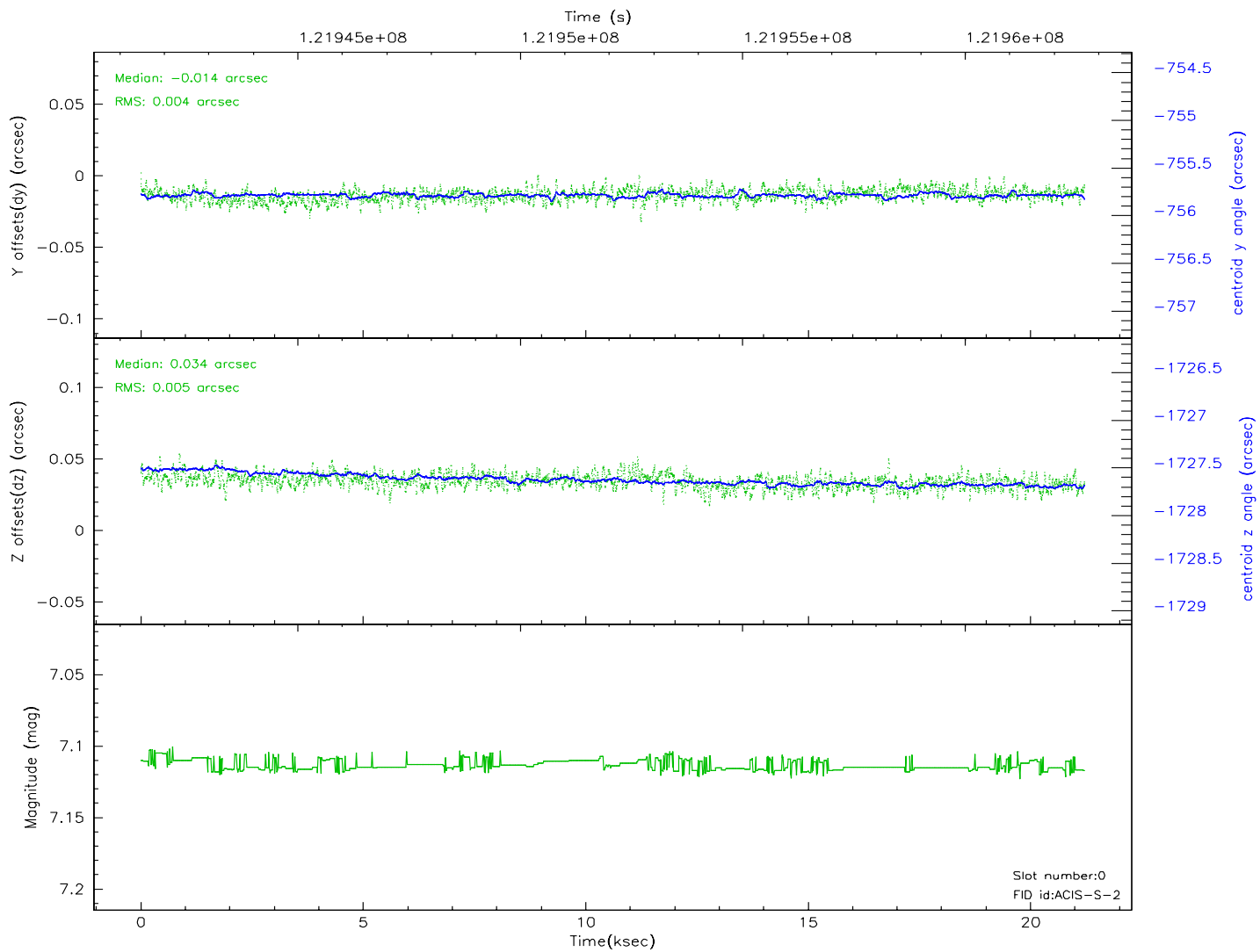
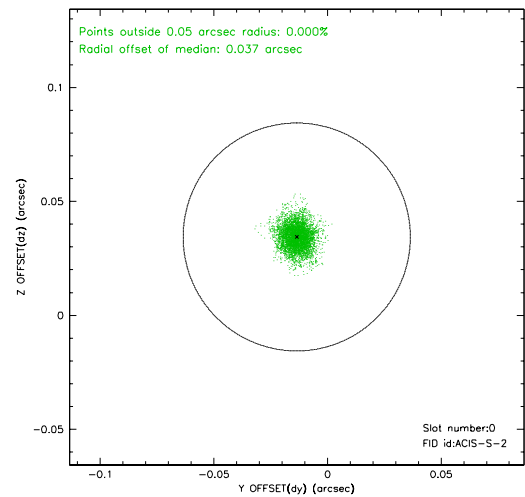
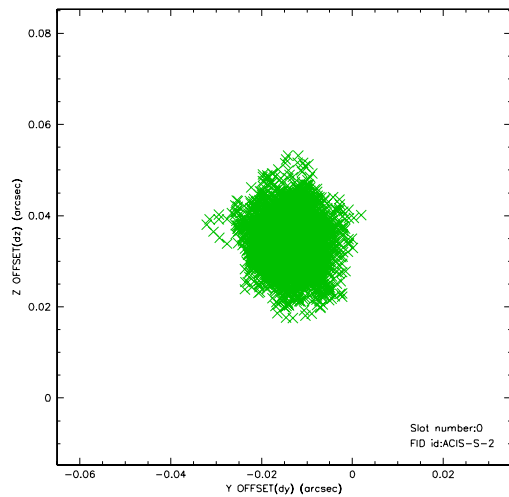


2.4.5 Slot 7

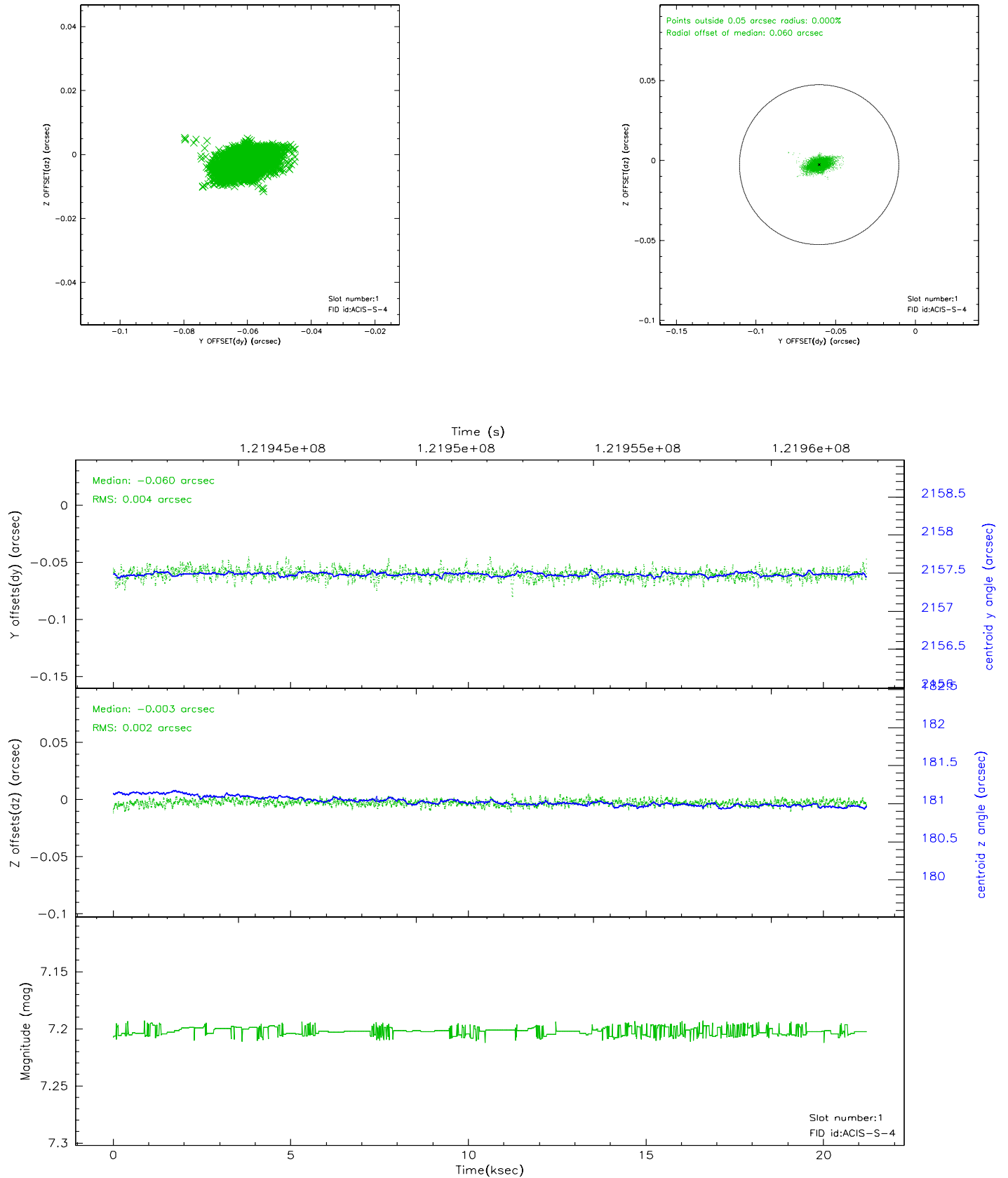


2.5 FID Slots

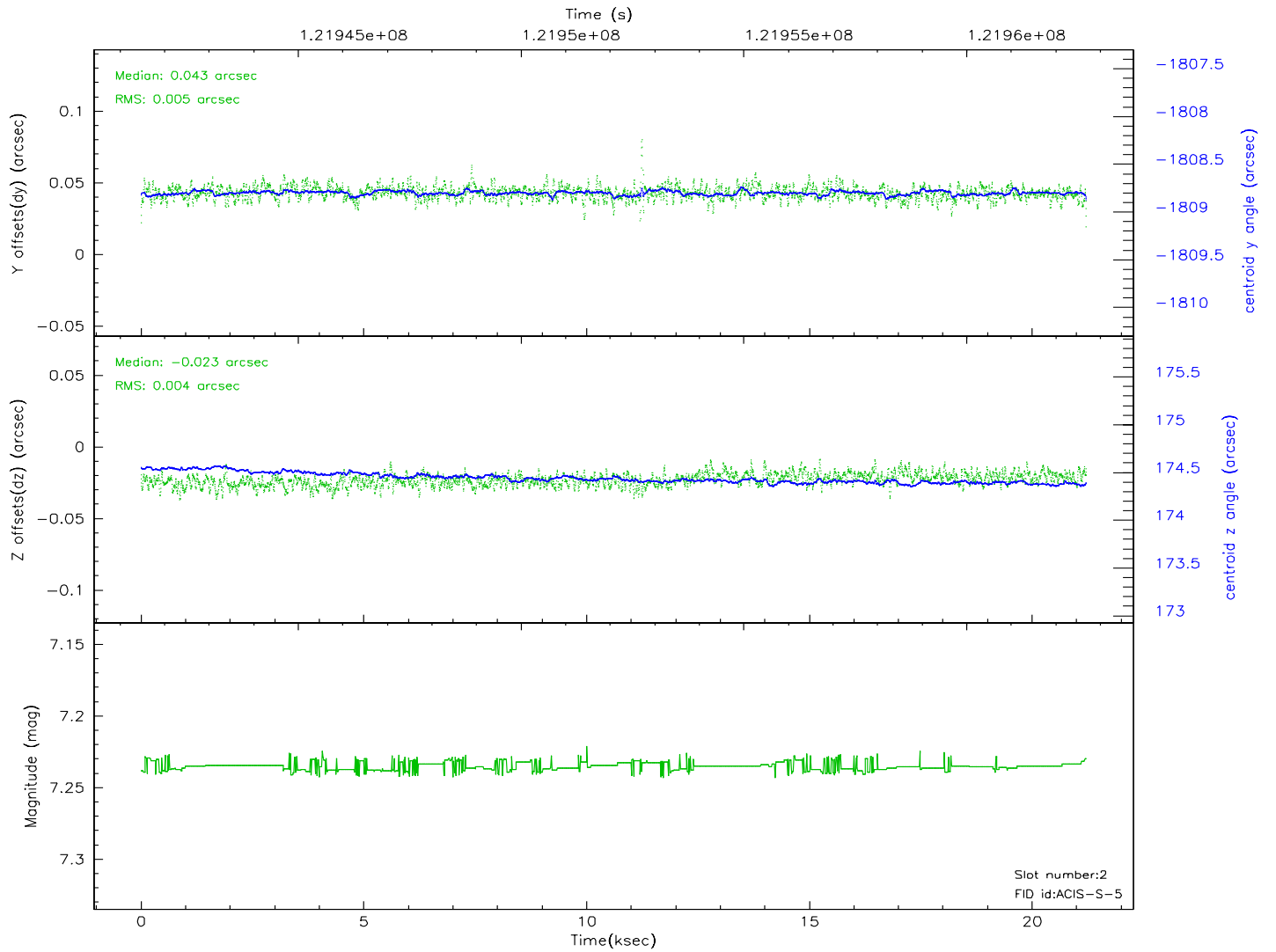
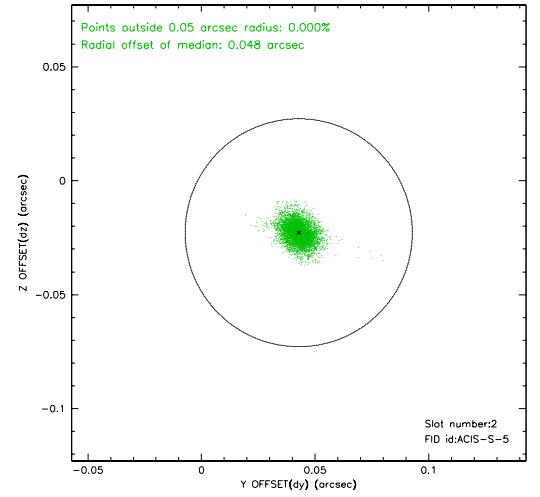
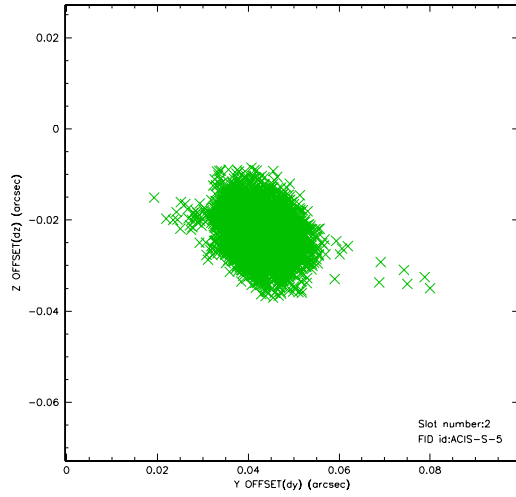
2.5.1 Slot 0



2.5.2 Slot 1



2.5.3 Slot 2



3 Point Sources

A Summary

A.1 Status

V&V Scientist	Beth Sundheim
V&V Date (YYYY-MM-DD)	2007.01.12
V&V Edition	1
V&V Disposition and Status	OK
V&V Charge Time	21.22

A.2 Comments