

# V&V Reference Report

## L2 ASCDS Version : 7.6.9

Observation 2755 - L2 Version 001  
Chandra X-Ray Center

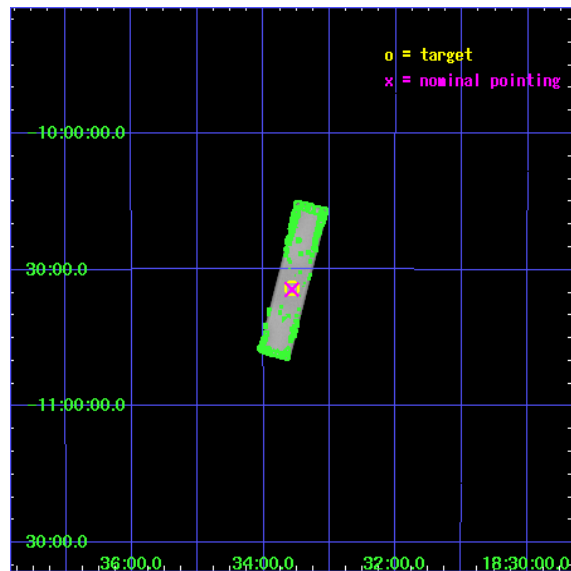
L2 Processing Date : Oct 12 2006

## Contents

<b>1</b>	<b>Front</b>	<b>2</b>
<b>2</b>	<b>OBI</b>	<b>3</b>
2.1	OBI . . . . .	3
2.1.1	Images . . . . .	3
2.1.2	Parameters . . . . .	4
2.1.3	Events . . . . .	4
2.2	Compared Parameters . . . . .	5
2.3	Aspect . . . . .	6
2.4	Star Slots . . . . .	9
2.4.1	Slot 3 . . . . .	9
2.4.2	Slot 4 . . . . .	10
2.4.3	Slot 5 . . . . .	11
2.4.4	Slot 6 . . . . .	12
2.4.5	Slot 7 . . . . .	13
2.5	FID Slots . . . . .	14
2.5.1	Slot 0 . . . . .	14
2.5.2	Slot 1 . . . . .	15
<b>3</b>	<b>Point Sources</b>	<b>16</b>
<b>A</b>	<b>Summary</b>	<b>17</b>
A.1	Status . . . . .	17
A.2	Comments . . . . .	17

# 1 Front

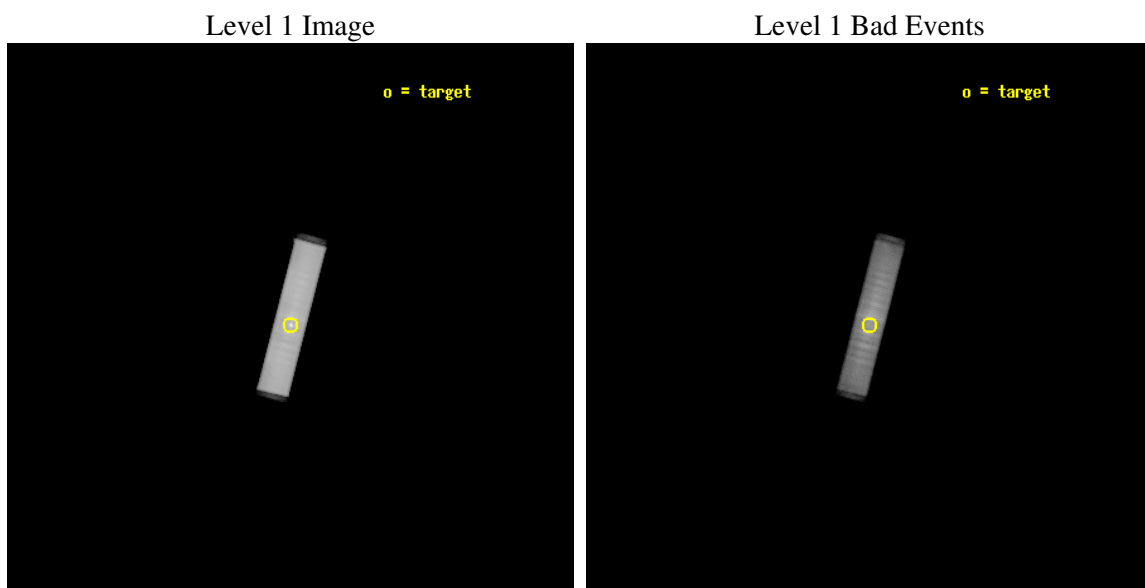
seq_num	500205
obs_id	2755
title	A SEARCH FOR PULSATIONS FROM THE CENTRAL CORE OF G21.5-0.9
observer	Dr. Stephen Murray
object	G21.5-0.9
ra_targ	278.391667
dec_targ	-10.568611
ra_nom	278.39269570924
dec_nom	-10.573164331862
roll_nom	284.41309053478
revision	3
ontime	30368.957513183
livetime	30260.961324626
l2events	1228286



## 2 OBI

### 2.1 OBI

#### 2.1.1 Images



### 2.1.2 Parameters

obi_num	2
ascdsver	7.6.9
caldbver	3.2.3
date	2006-10-12T14:50:39
revision	3

sched_exp_time	29992.282000
ontime	30438.401266068
l1events	1724457

### 2.1.3 Events

Level 1 Events

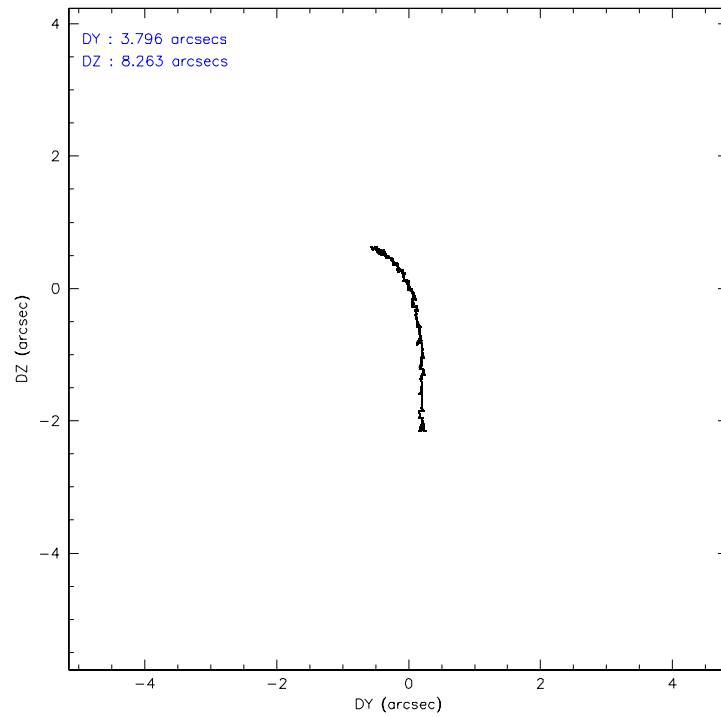
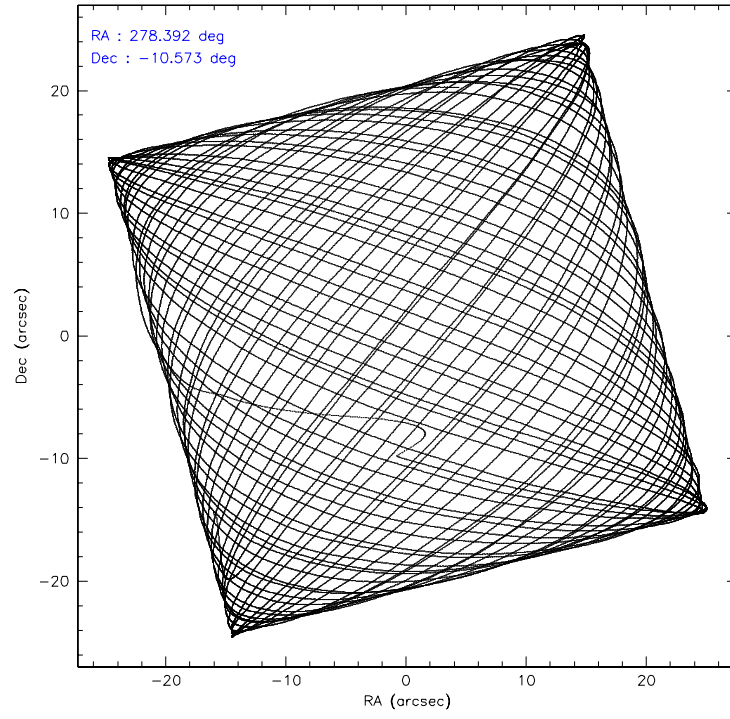
	<b>segment 1</b>	<b>segment 2</b>	<b>segment 3</b>
level 1 events	1709	1722740	8
rejected events	1597	422186	7
rejected %	93%	24%	87%

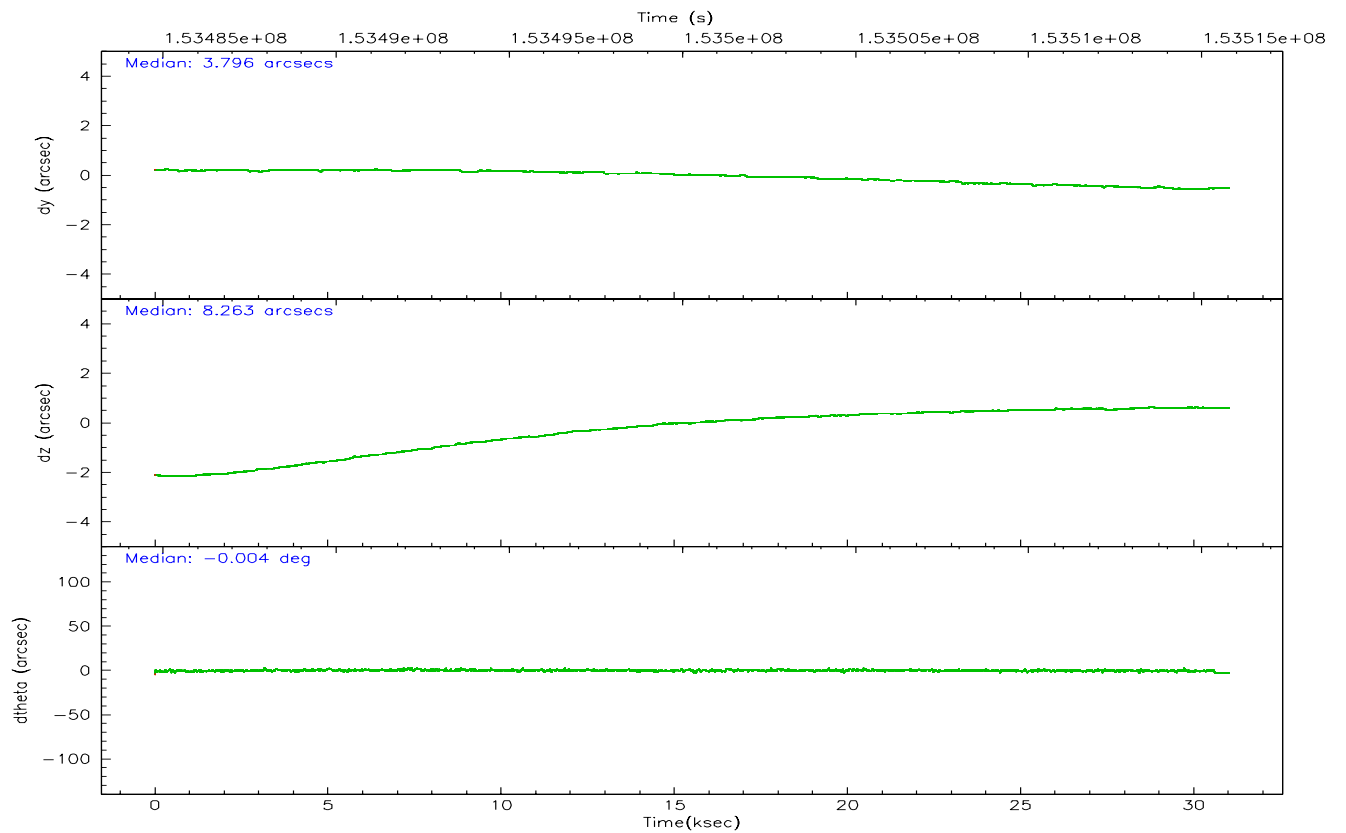
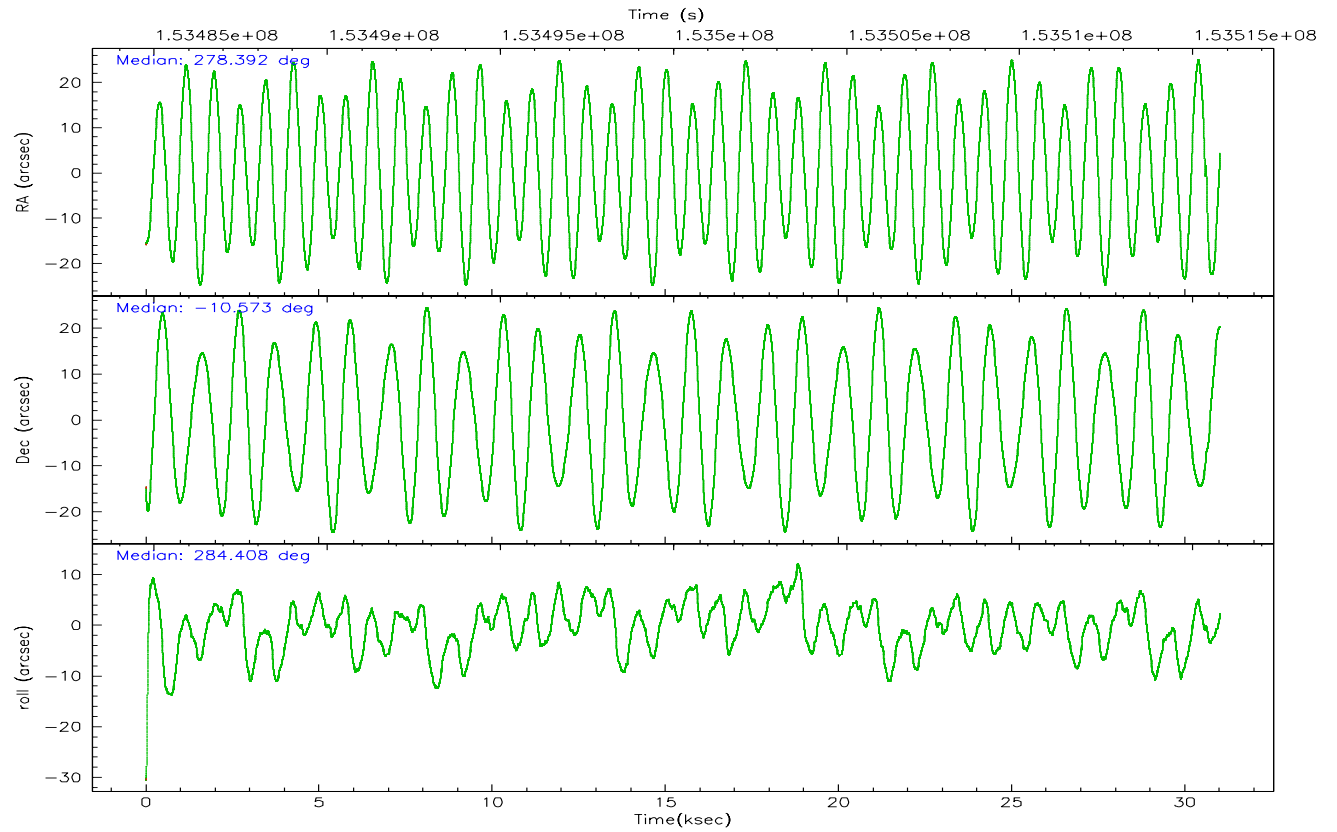
## 2.2 Compared Parameters

Parameter	Planned	Actual
Instrument	HRC	HRC
Detector	HRC-S	HRC-S
Grating	NONE	NONE
Data mode	OBSERVING	OBSERVING
Observation mode	POINTING	POINTING
Pointing RA	278.371358	278.3926957092443
Pointing Dec	-10.553763	-10.57316433186211
Pointing Roll	284.341870	284.4130905347777
SIM focus pos (mm)	-1.529586	-1.523540733526241
SIM defocus (mm)	0.003750771043328743	0.009795905878055677
SIM translation stage pos (mm)	250.455976	250.4635187648994
SIM translation stage offset (mm)	0	-0.007540371344731511
Observation start time	153484903.184000	153483887.43871
Observation start date	2002-11-12T10:40:39	2002-11-12T10:24:47
Observation end time	153514896.184000	153516652.59007
Observation end date	2002-11-12T19:00:32	2002-11-12T19:30:52

Parameter	Planned	Actual
Obspar format version number	6	6
Obspar file type	PREDICTED	ACTUAL
Obspar update status	NONE	UPDATED

## 2.3 Aspect





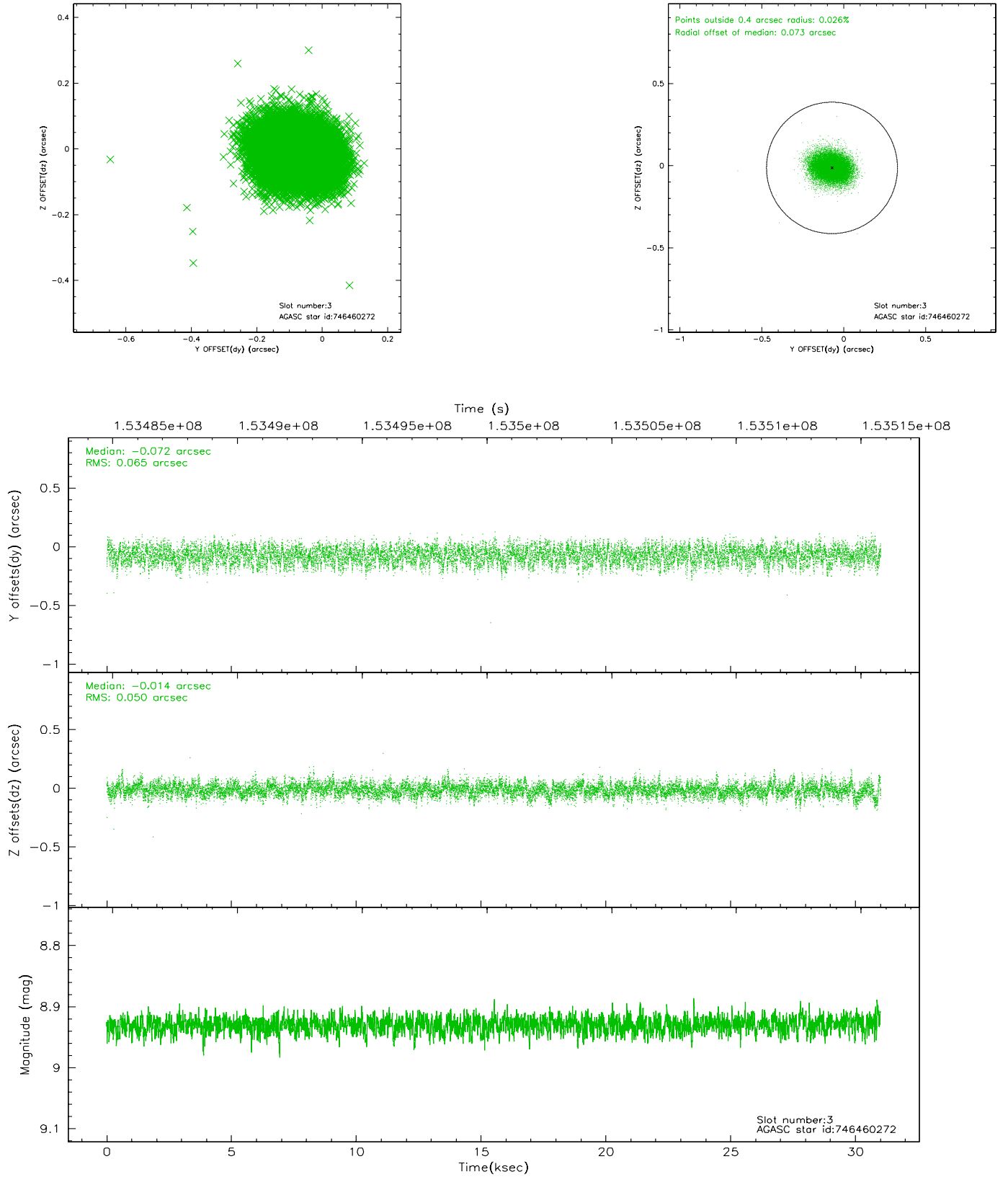
### Slot Statistics

slot	status	id	mag	n_pts	med_dy	med_dz	dr1	dr2	ra	dec	mean_y	mean_z
0	FID	HRC-S-1	6.99	7469	0.166	-0.104	0.004	0.008	0.000000	0.000000	-1157.75	-456.43
1	FID	HRC-S-2	6.99	7469	0.099	-0.103	0.004	0.008	0.000000	0.000000	1241.69	-449.09
2	OMITTED		0.00	0	0.000	0.000	0.000	0.000	0.000000	0.000000	0.00	0.00
3	GUIDE	746460272	8.93	15123	-0.072	-0.014	0.088	0.139	278.847488	-10.152127	-980.70	1992.89
4	GUIDE	746460328	9.82	15073	-0.091	0.066	0.119	0.192	278.603974	-9.898096	-2081.01	1384.35
5	GUIDE	746462392	8.55	15125	0.073	0.044	0.069	0.113	279.038421	-10.890715	1763.52	1984.59
6	GUIDE	746462456	8.39	15128	-0.031	0.045	0.067	0.107	278.652171	-10.530173	165.99	984.48
7	GUIDE	746995400	9.48	15109	0.118	-0.139	0.129	0.210	278.078957	-11.289885	2313.77	-1656.16

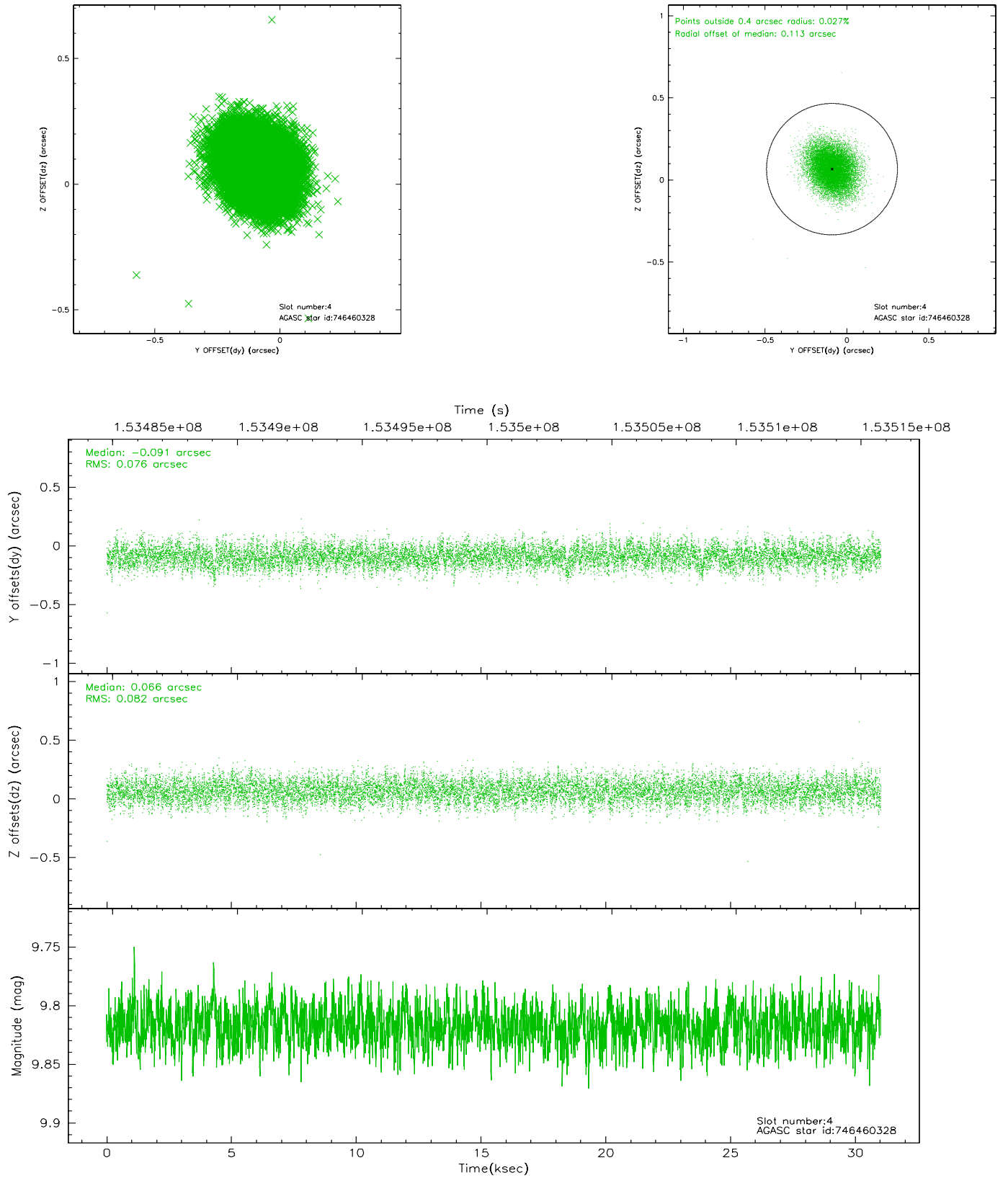


## 2.4 Star Slots

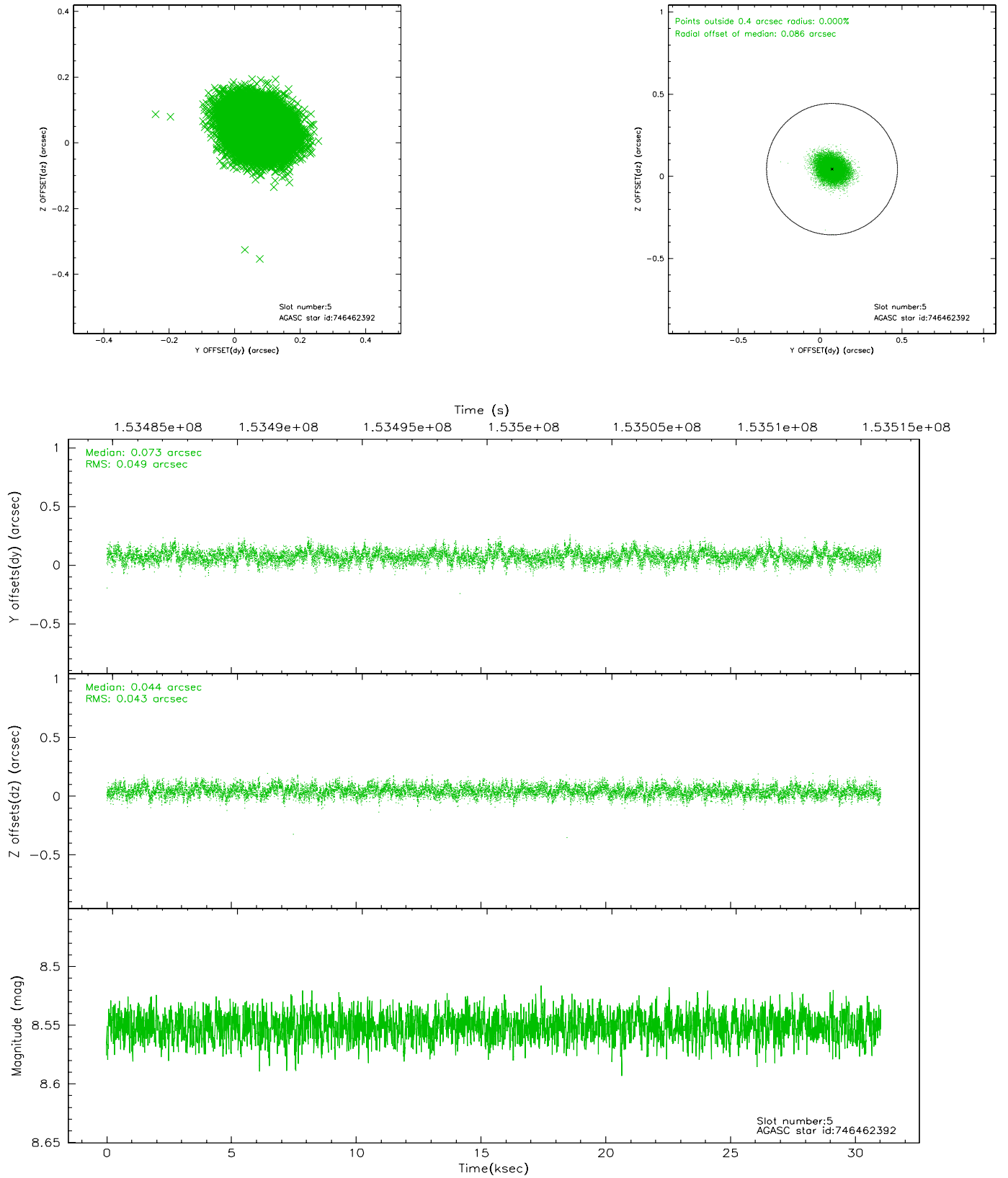
### 2.4.1 Slot 3



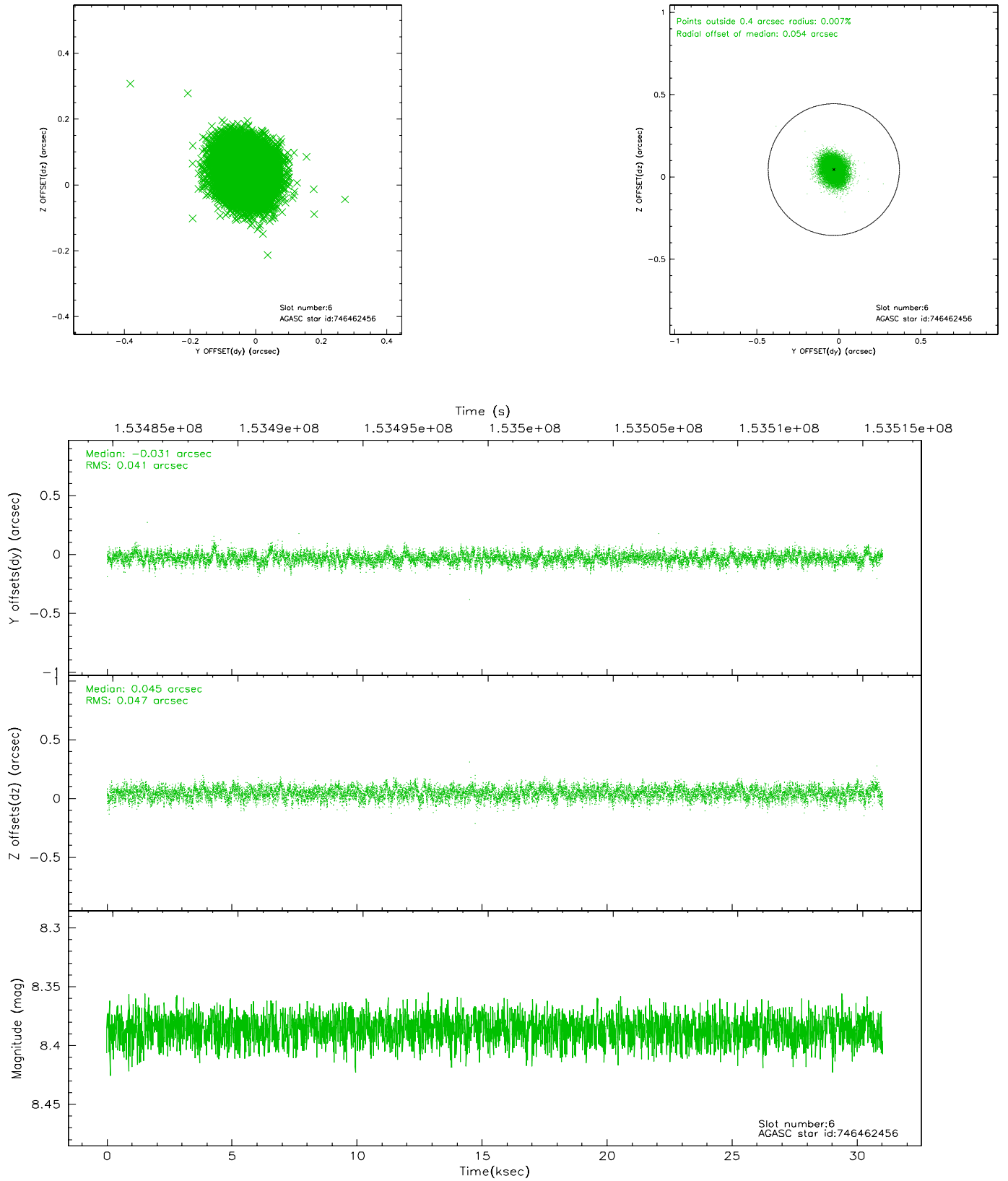
## 2.4.2 Slot 4



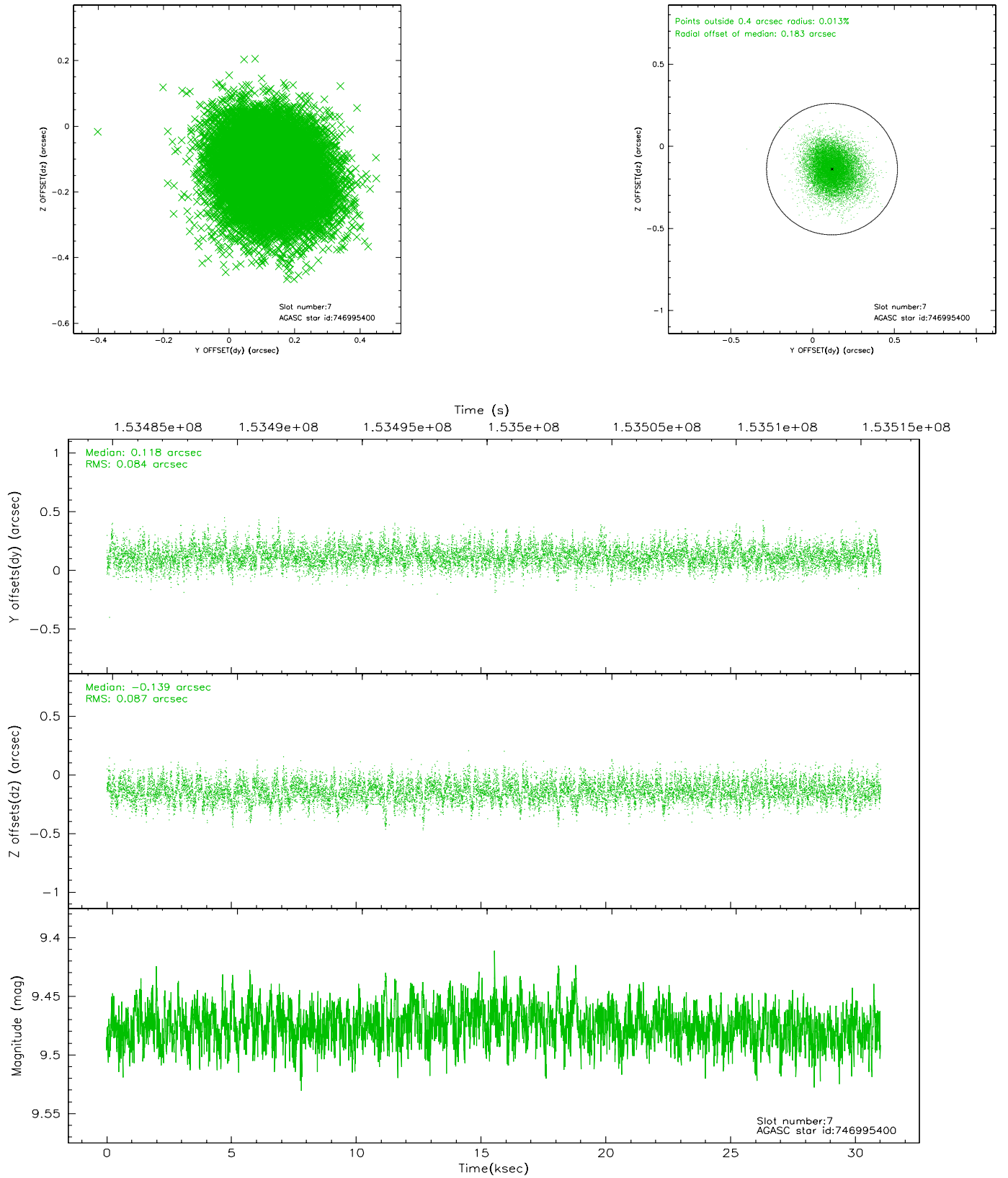
### 2.4.3 Slot 5



## 2.4.4 Slot 6

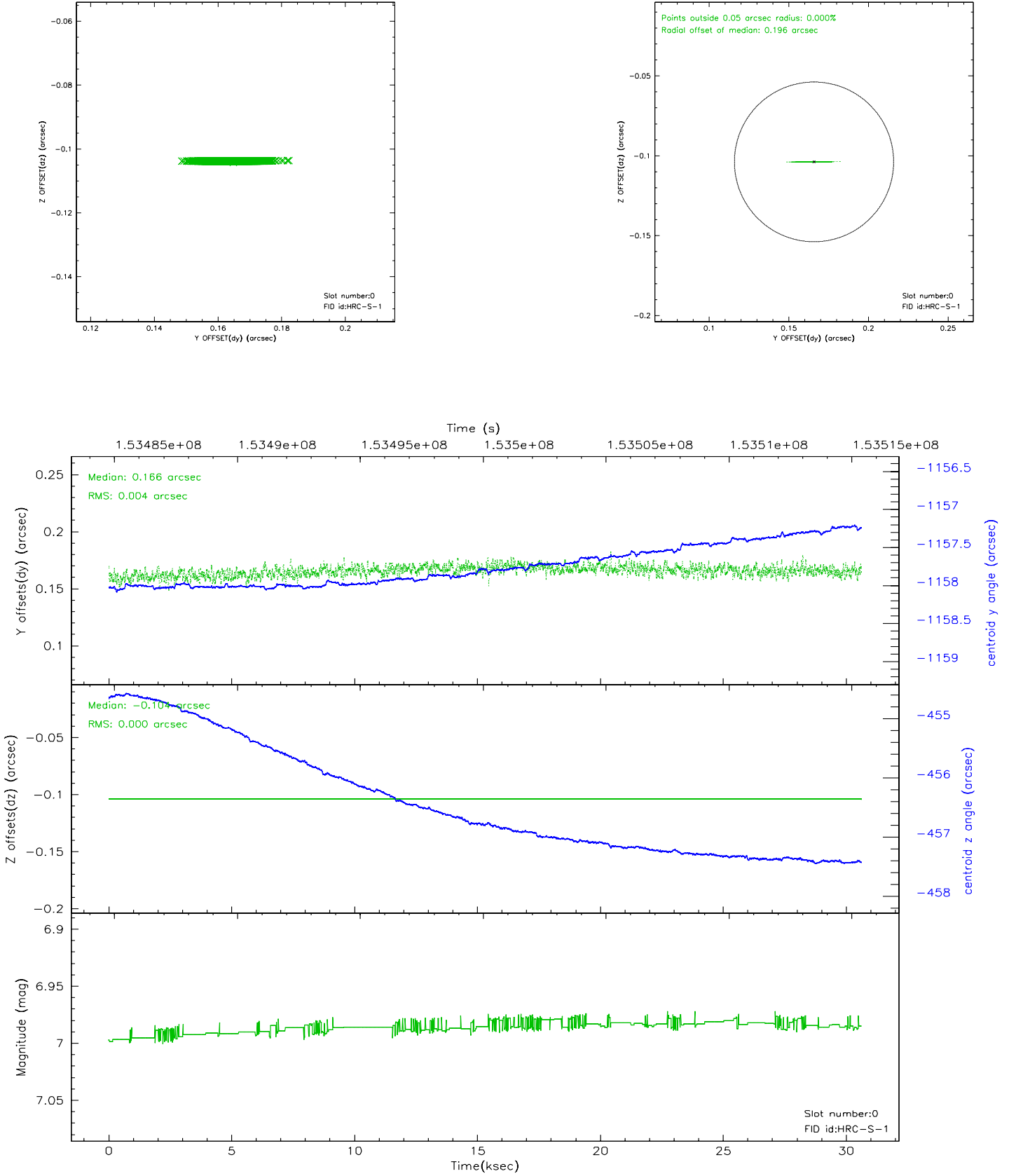


## 2.4.5 Slot 7

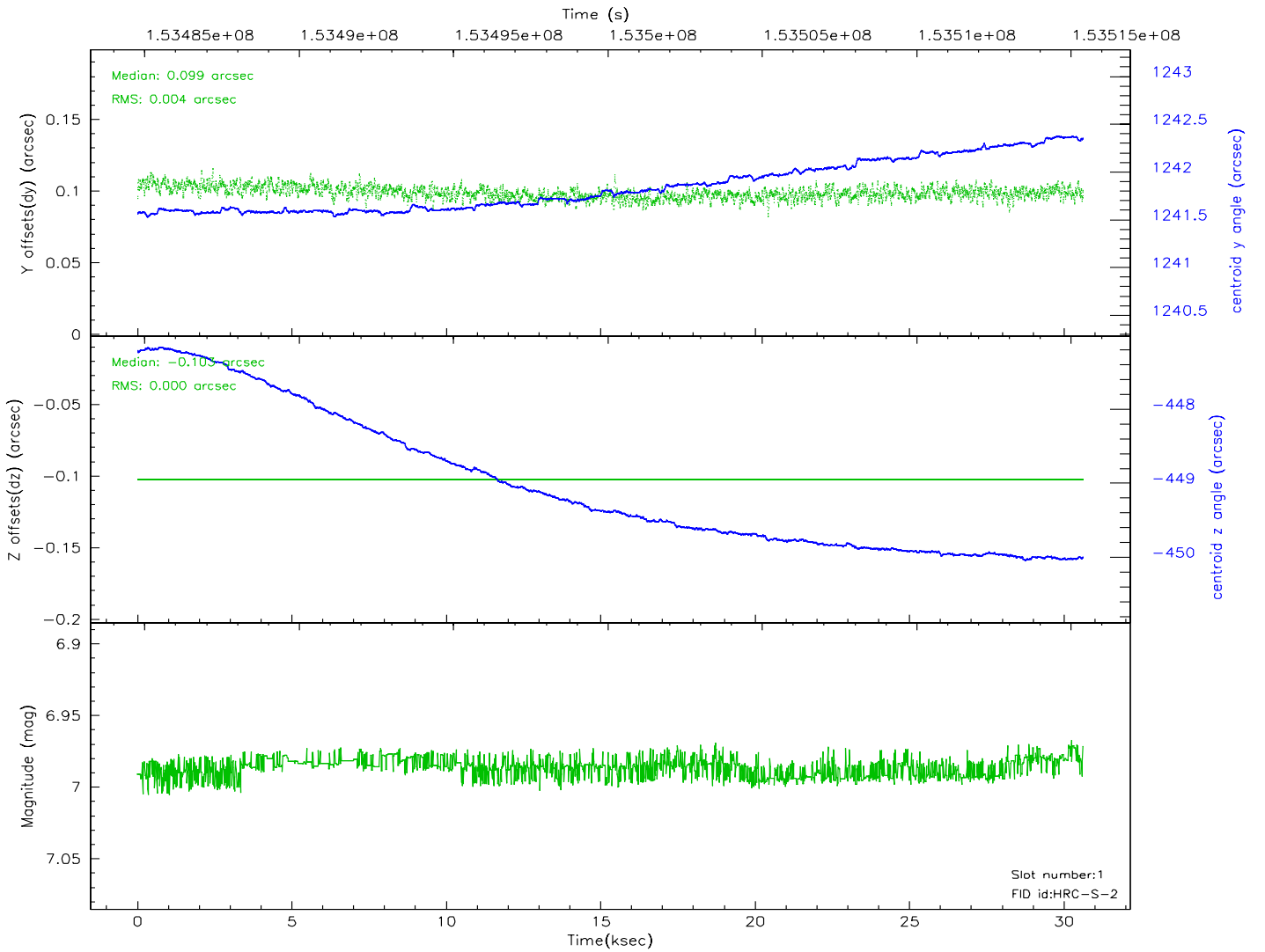
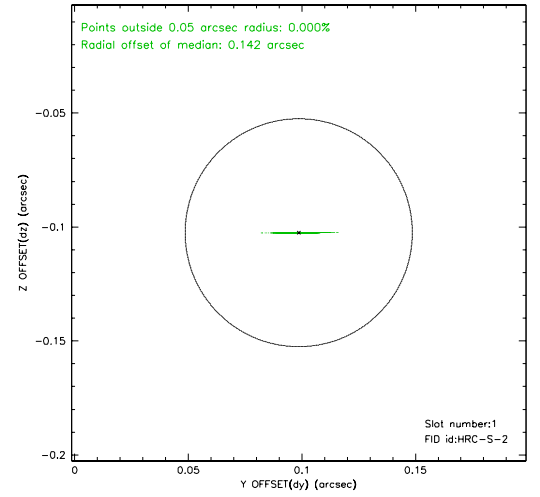
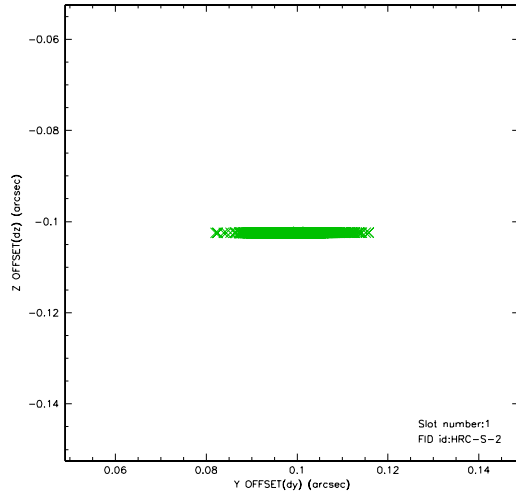


## 2.5 FID Slots

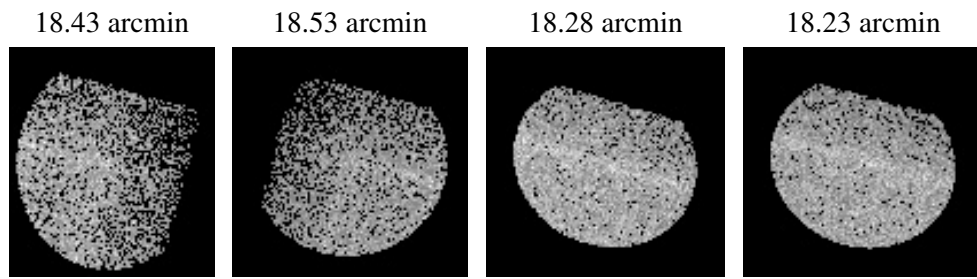
### 2.5.1 Slot 0



## 2.5.2 Slot 1



### 3 Point Sources





# A Summary

## A.1 Status

V&V Scientist	Jen Lauer
V&V Date (YYYY-MM-DD)	2010.10.01
V&V Edition	2
V&V Disposition and Status	OK
V&V Charge Time	30.368

## A.2 Comments

The fid light in slot 2 was manually excluded from the processing due to poor data quality.