

V&V Reference Report

L2 ASCDS Version : 7.6.9

Observation 2505 - L2 Version 001
Chandra X-Ray Center

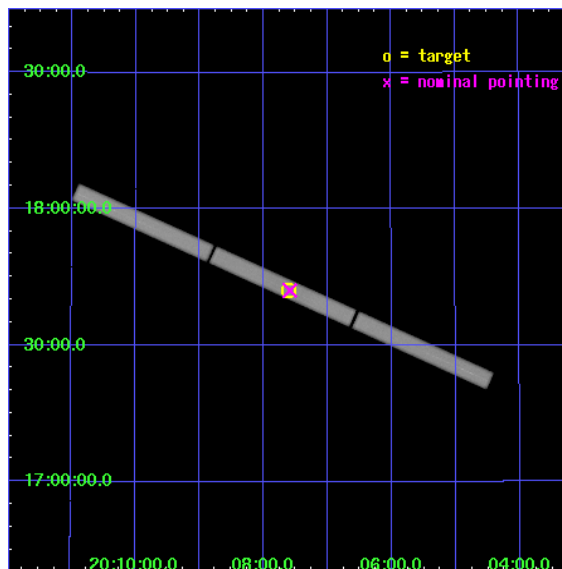
L2 Processing Date : Dec 19 2006

Contents

1	Front	2
2	OBI	3
2.1	OBI	3
2.1.1	Images	3
2.1.2	Parameters	4
2.1.3	Events	4
2.2	Compared Parameters	5
2.3	Aspect	6
2.4	Star Slots	9
2.4.1	Slot 3	9
2.4.2	Slot 4	10
2.4.3	Slot 5	11
2.4.4	Slot 6	12
2.4.5	Slot 7	13
2.5	FID Slots	14
2.5.1	Slot 0	14
2.5.2	Slot 1	15
2.5.3	Slot 2	16
3	Gratings	17
3.1	LETG Arm	17
A	Summary	19
A.1	Status	19
A.2	Comments	19

1 Front

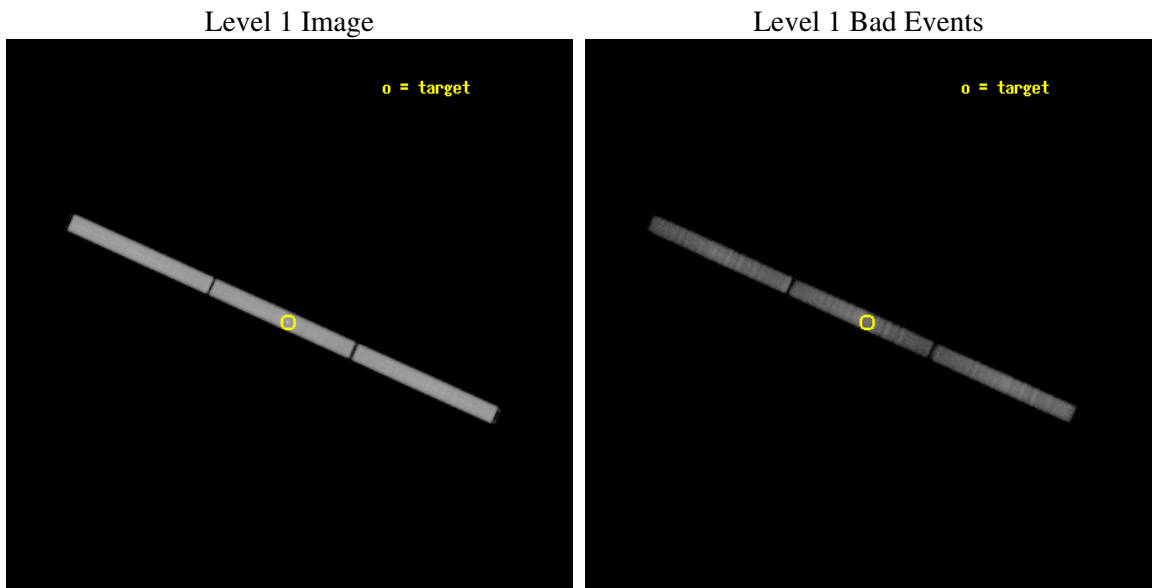
seq_num	300058
obs_id	2505
title	WZ SGE IN OUTBURST TEN YEARS EARLY: I THE EUV EMISSION
observer	Dr Peter Wheatley
object	WZ SGE
ra_targ	301.900833
dec_targ	17.704167
ra_nom	301.89625606277
dec_nom	17.702364607773
roll_nom	204.12502422591
revision	2
ontime	18759.550738618
livetime	18615.818176614
l2events	1028749



2 OBI

2.1 OBI

2.1.1 Images



2.1.2 Parameters

obi_num	0
ascdsver	7.6.9
caldbver	3.2.4
date	2006-12-19T10:14:37
revision	2

sched_exp_time	18923.721000
ontime	18855.900742412
l1events	1458022

2.1.3 Events

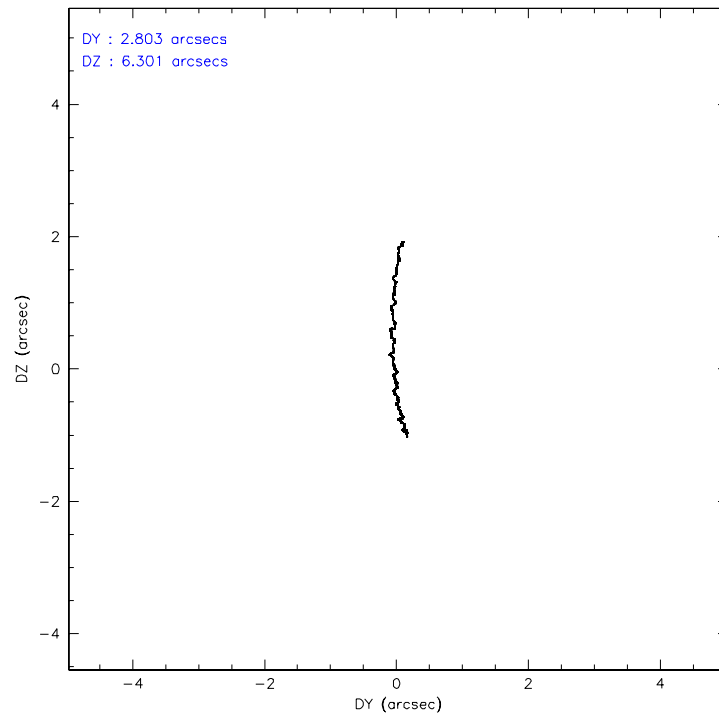
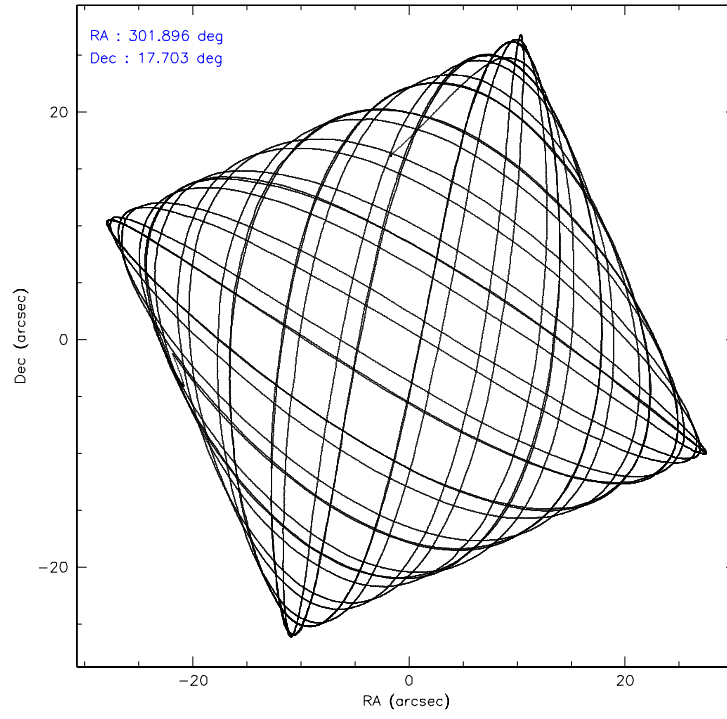
Level 1 Events

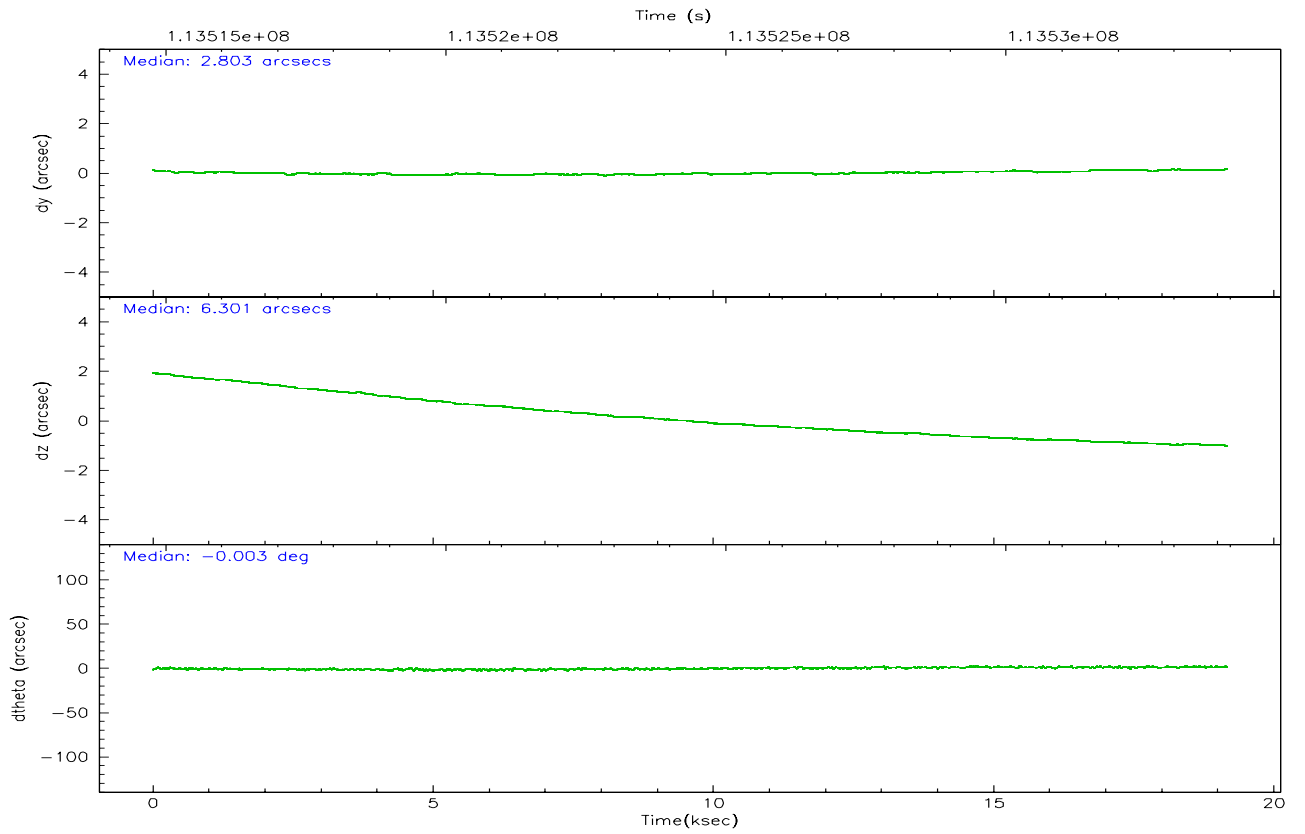
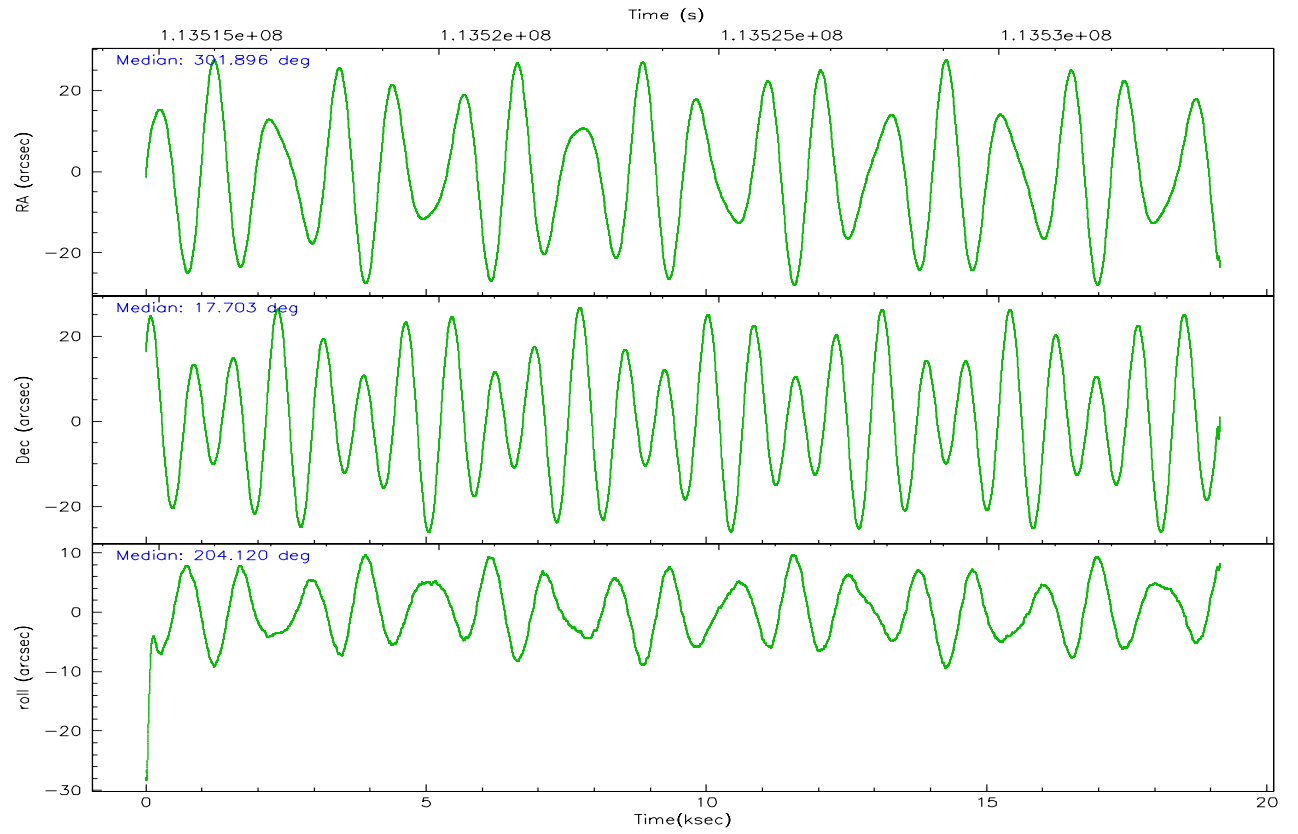
	segment 1	segment 2	segment 3
level 1 events	505560	471690	480772
rejected events	93831	100471	115046
rejected %	18%	21%	23%

2.2 Compared Parameters

Parameter	Planned	Actual	Parameter	Planned	Actual
Instrument	HRC	HRC	Obspar format version number	6	6
Detector	HRC-S	HRC-S	Obspar file type	PREDICTED	ACTUAL
Grating	LETG	LETG	Obspar update status	NONE	UPDATED
Data mode	OBSERVING	OBSERVING			
Observation mode	POINTING	POINTING			
Pointing RA	301.912662	301.8962560627712			
Pointing Dec	17.726352	17.70236460777321			
Pointing Roll	204.052716	204.1250242259073			
SIM focus pos (mm)	-1.429586	-1.428180813131781			
SIM defocus (mm)	0.1037507710433287	0.1051558262725154			
SIM translation stage pos (mm)	251.455976	251.4516446784125			
SIM translation stage offset (mm)	-1	-0.9956662848578048			
Observation start time	113514900.184000	113513715.61884			
Observation start date	2001-08-06T19:53:56	2001-08-06T19:35:15			
Observation end time	113533823.184000	113534770.14467			
Observation end date	2001-08-07T01:09:19	2001-08-07T01:26:10			

2.3 Aspect



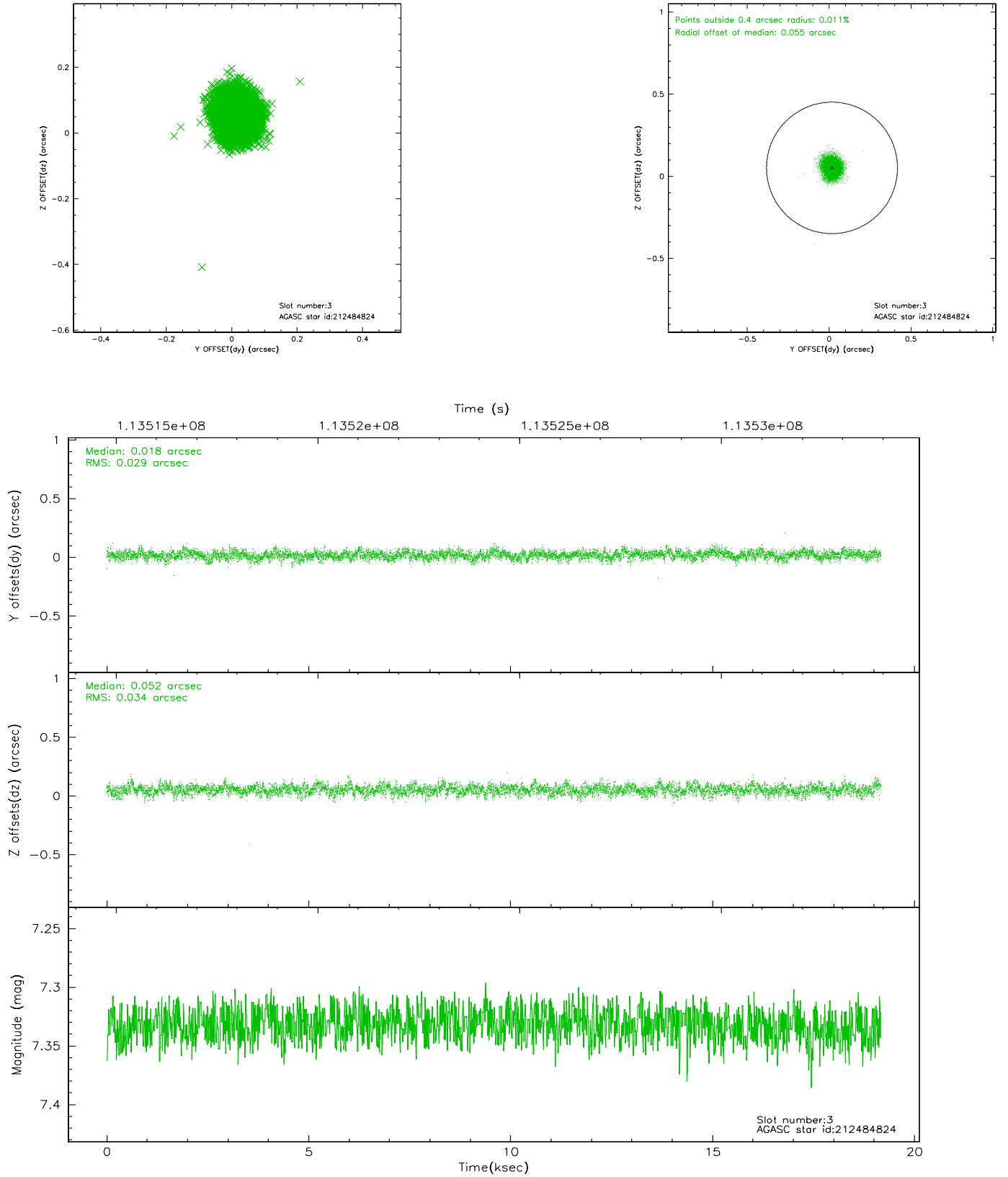


Slot Statistics

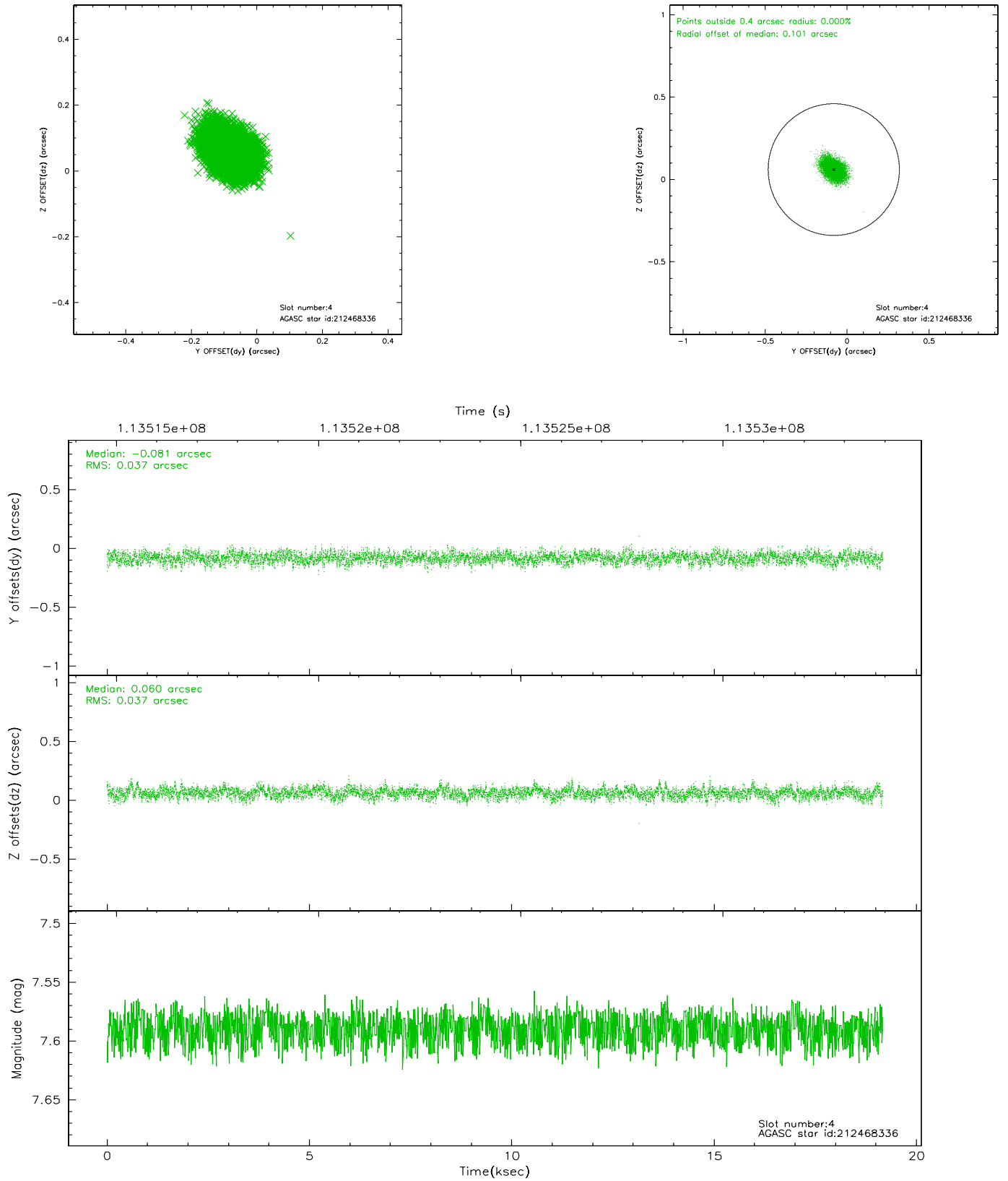
slot	status	id	mag	n_pts	med_dy	med_dz	dr1	dr2	ra	dec	mean_y	mean_z
0	FID	HRC-S-1	7.04	4668	0.132	-0.118	0.029	0.045	0.000000	0.000000	-1156.78	-475.25
1	FID	HRC-S-2	7.04	4669	0.124	-0.098	0.011	0.020	0.000000	0.000000	1242.64	-467.98
2	FID	HRC-S-3	7.06	4665	0.136	-0.086	0.035	0.051	0.000000	0.000000	-1159.23	554.21
3	GUIDE	212484824	7.33	9346	0.018	0.052	0.048	0.078	301.436883	17.597881	1678.70	-244.00
4	GUIDE	212468336	7.59	9345	-0.081	0.060	0.055	0.091	301.479163	18.244435	593.04	-2307.95
5	GUIDE	212477672	7.62	9346	-0.030	-0.102	0.070	0.111	301.870505	17.020545	1168.08	2261.64
6	GUIDE	212600320	8.67	9343	0.053	0.018	0.062	0.100	302.393008	18.138679	-2106.19	-686.84
7	GUIDE	212603624	8.92	9342	0.042	-0.026	0.069	0.108	302.163000	18.336944	-1677.32	-1658.66

2.4 Star Slots

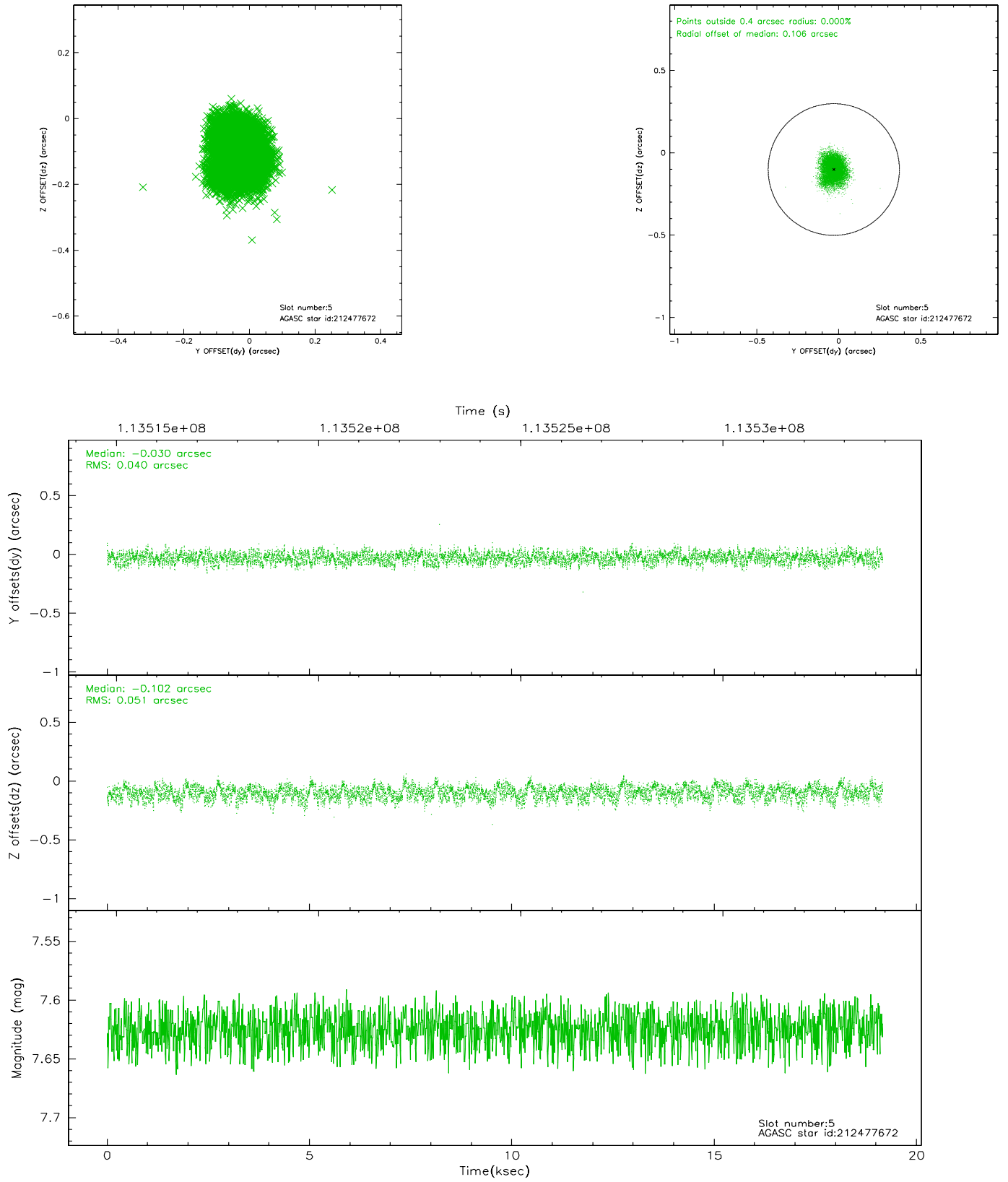
2.4.1 Slot 3



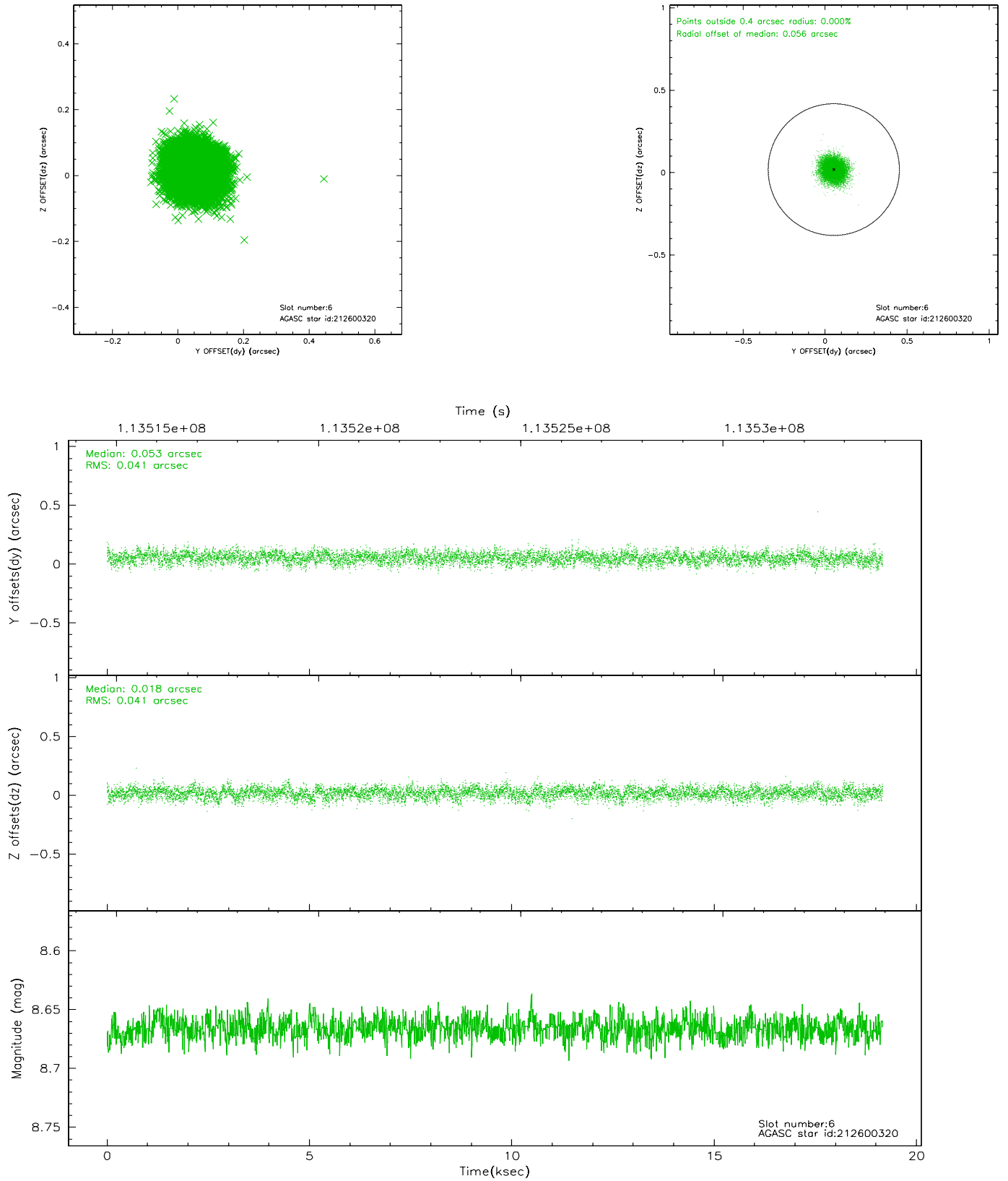
2.4.2 Slot 4



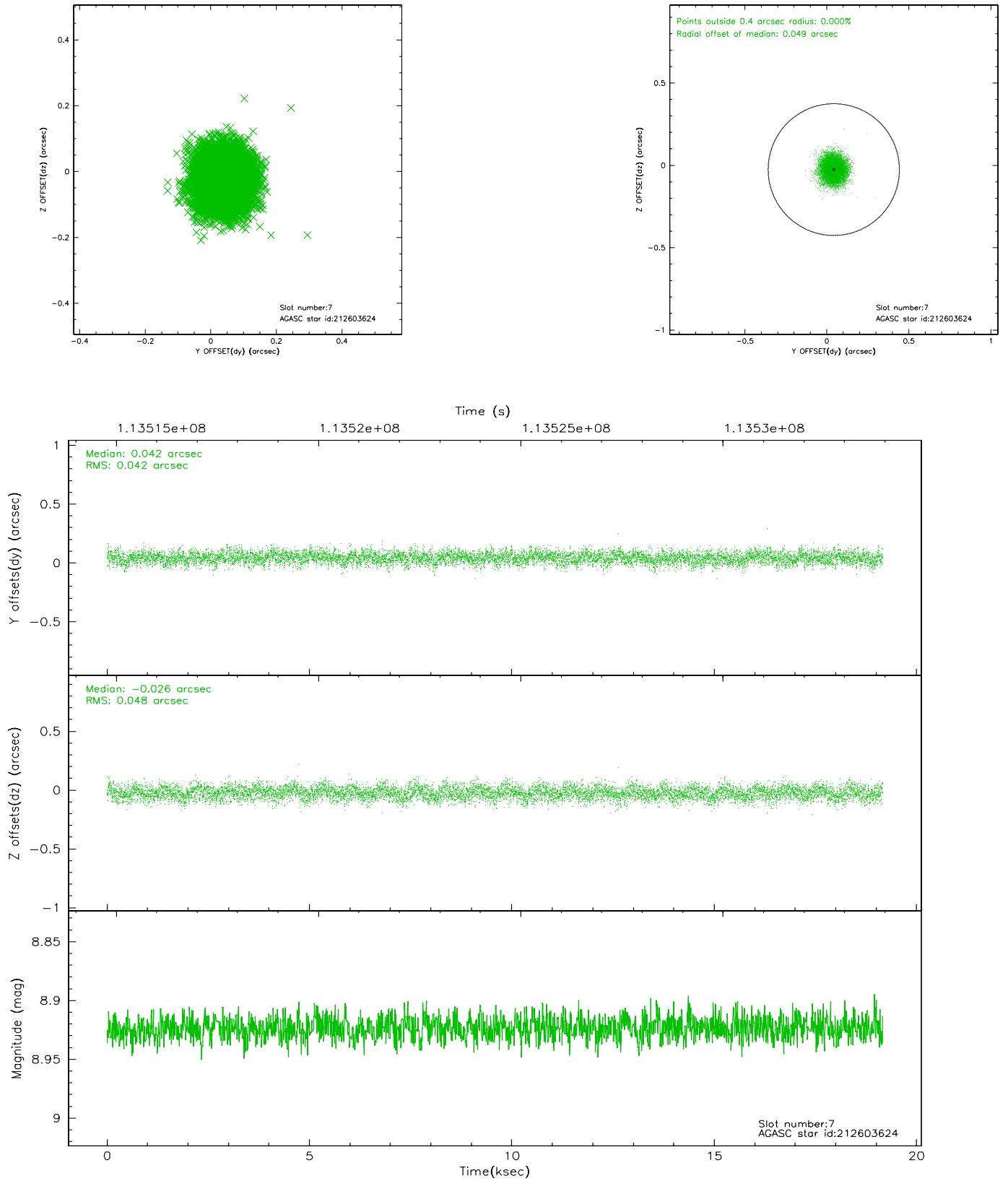
2.4.3 Slot 5



2.4.4 Slot 6

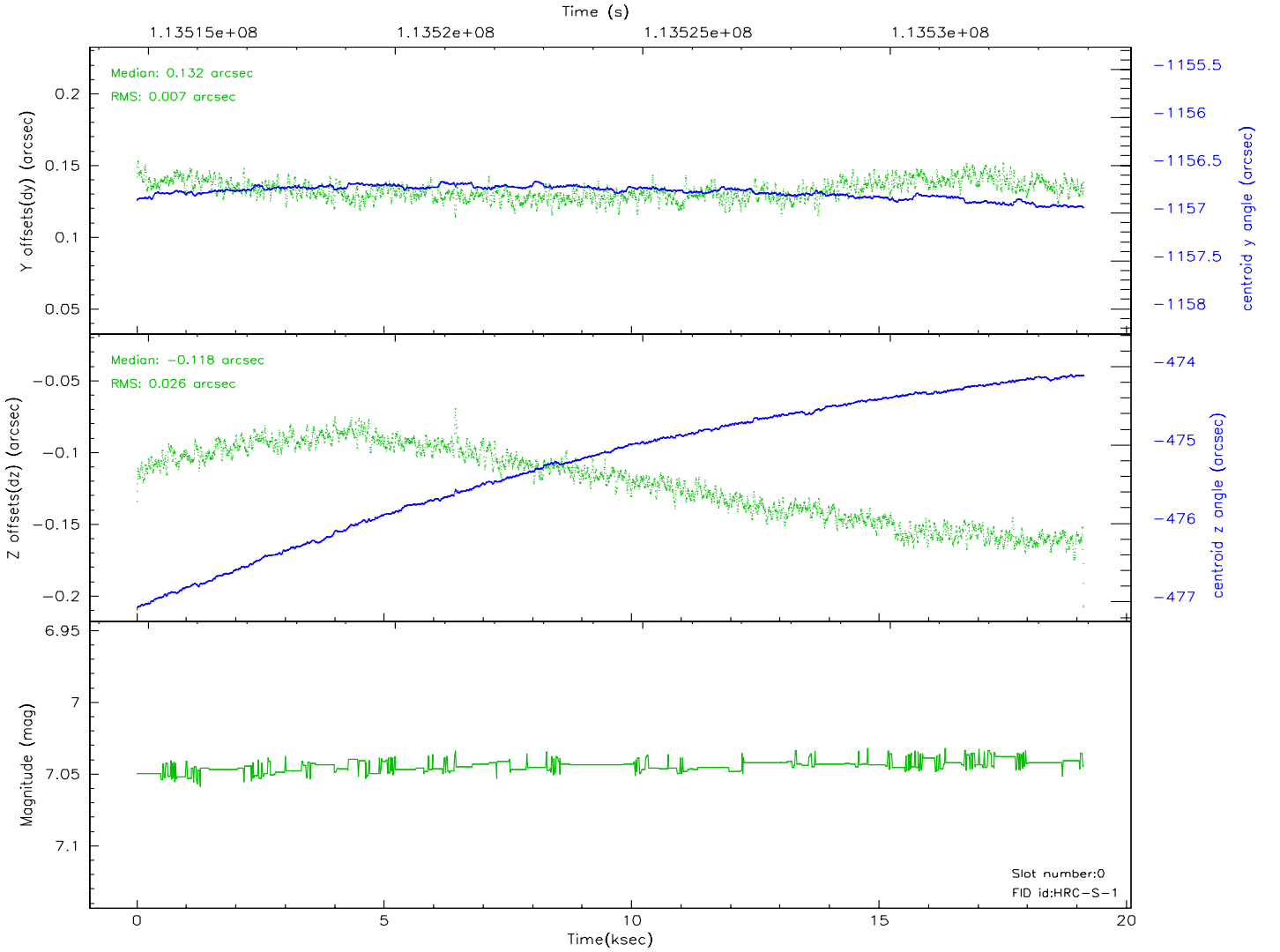
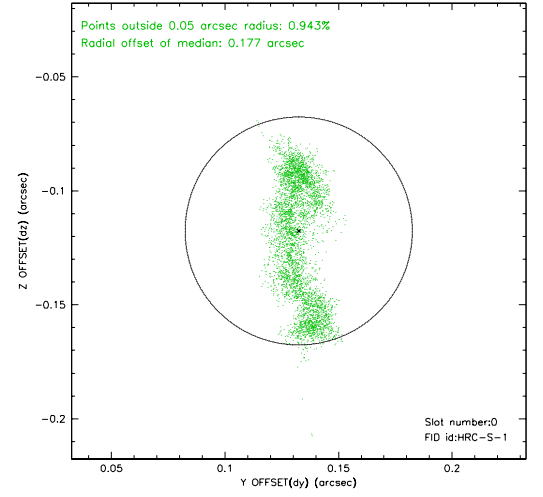
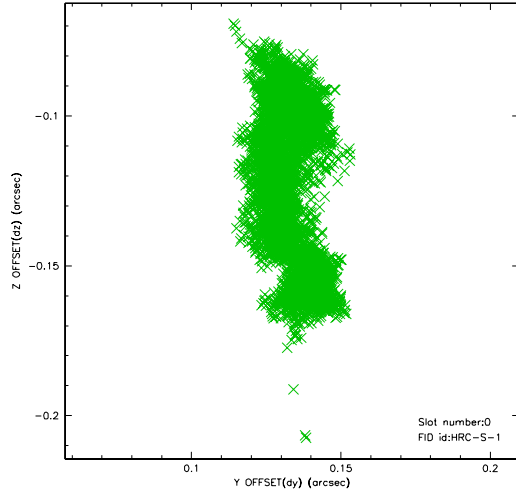


2.4.5 Slot 7

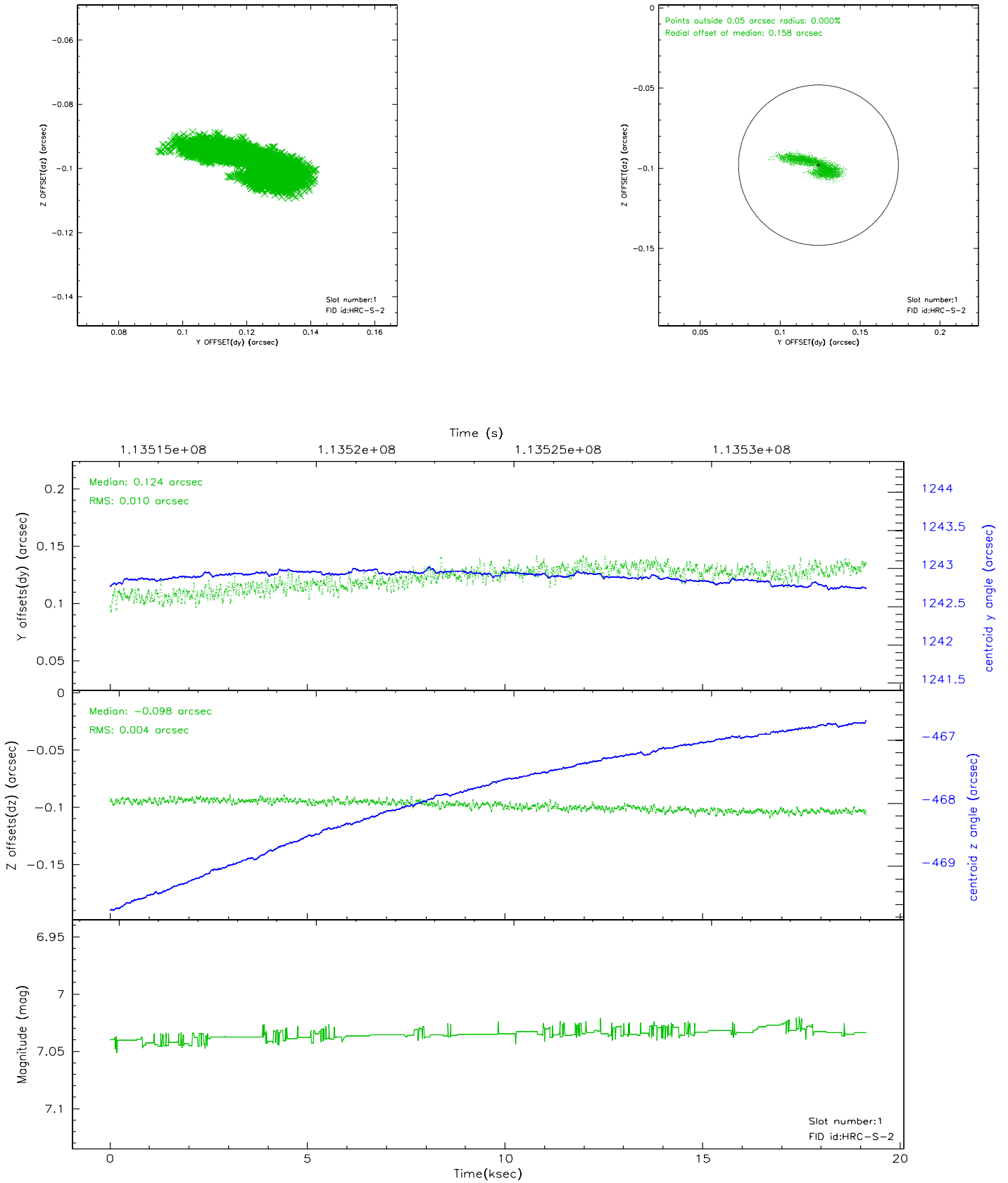


2.5 FID Slots

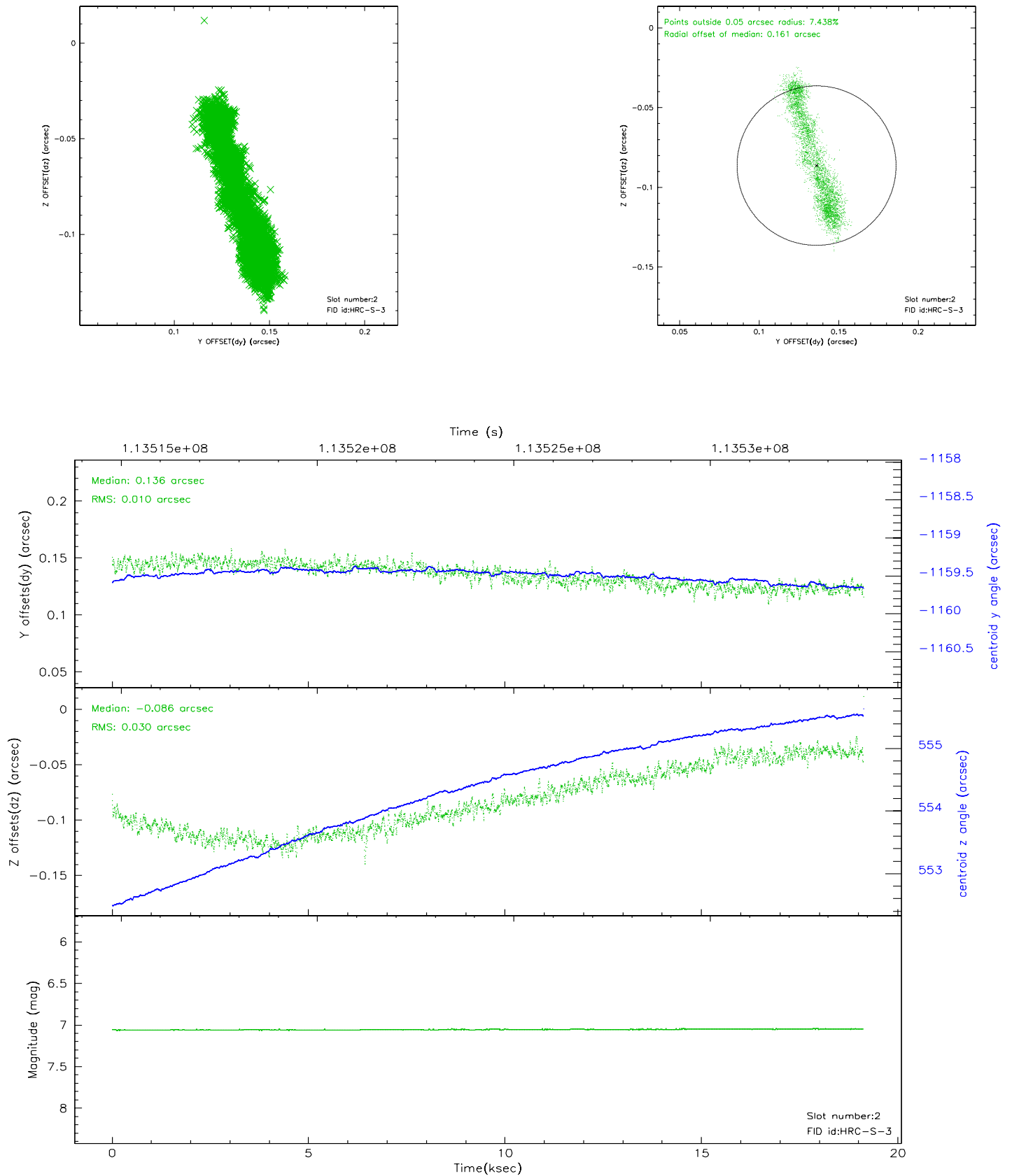
2.5.1 Slot 0



2.5.2 Slot 1

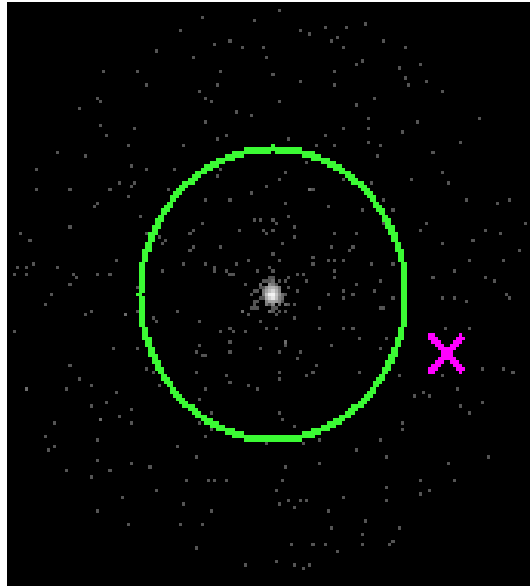


2.5.3 Slot 2

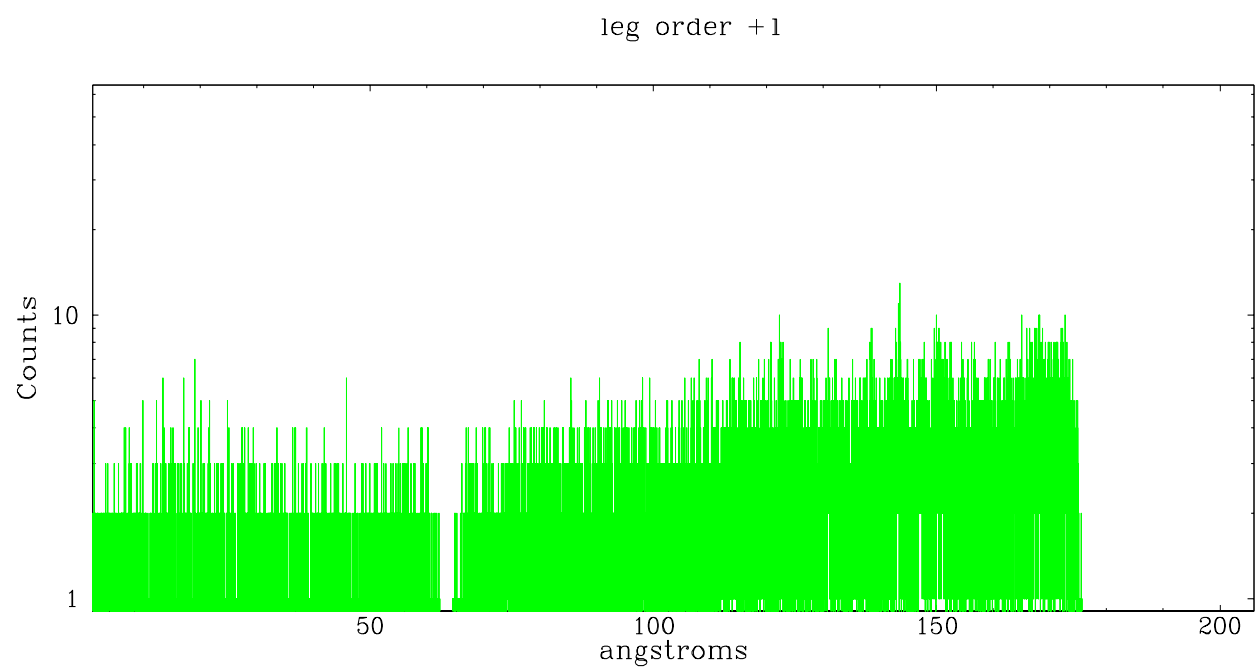
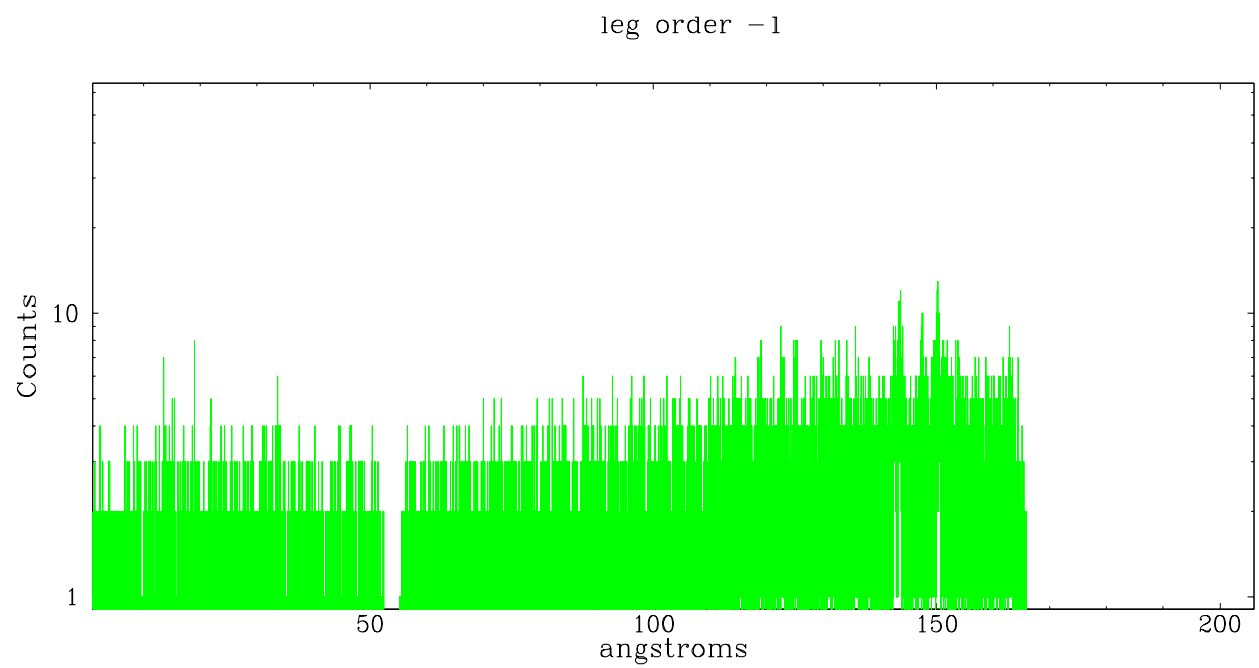


3 Gratings

3.1 LETG Arm



LETG Zero Order



A Summary

A.1 Status

V&V Scientist	Jen Lauer
V&V Date (YYYY-MM-DD)	2006.12.19
V&V Edition	1
V&V Disposition and Status	OK
V&V Charge Time	18.76

A.2 Comments

Monitor constraint not met, follows obs2504 by 11 days instead of 3 - 7.