

V&V Reference Report

L2 ASCDS Version : 8.4.5

Observation 2455 - L2 Version 3
Chandra X-Ray Center

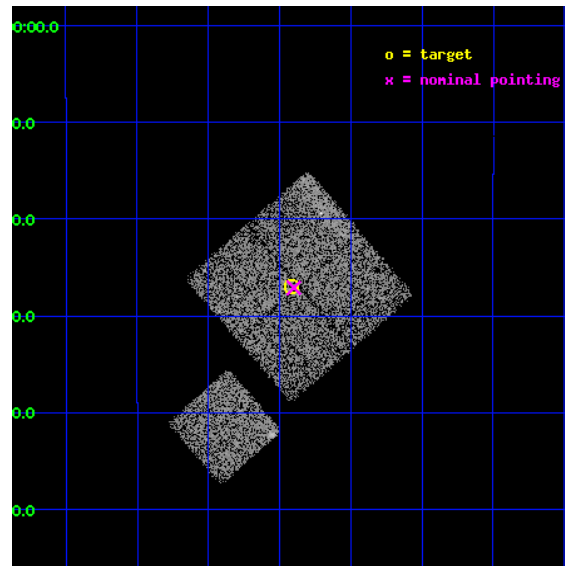
L2 Processing Date : Sep 17 2012

Contents

1	Front	2
2	OBI	3
2.1	OBI	3
2.1.1	Images	3
2.1.2	Bias	3
2.1.3	Parameters	4
2.1.4	Events	4
2.2	Compared Parameters	5
2.3	Aspect	6
2.4	Star Slots	9
2.4.1	Slot 3	9
2.4.2	Slot 4	10
2.4.3	Slot 5	11
2.4.4	Slot 6	12
2.4.5	Slot 7	13
2.5	FID Slots	14
2.5.1	Slot 0	14
2.5.2	Slot 1	15
2.5.3	Slot 2	16
A	Summary	17
A.1	Status	17
A.2	Comments	17

1 Front

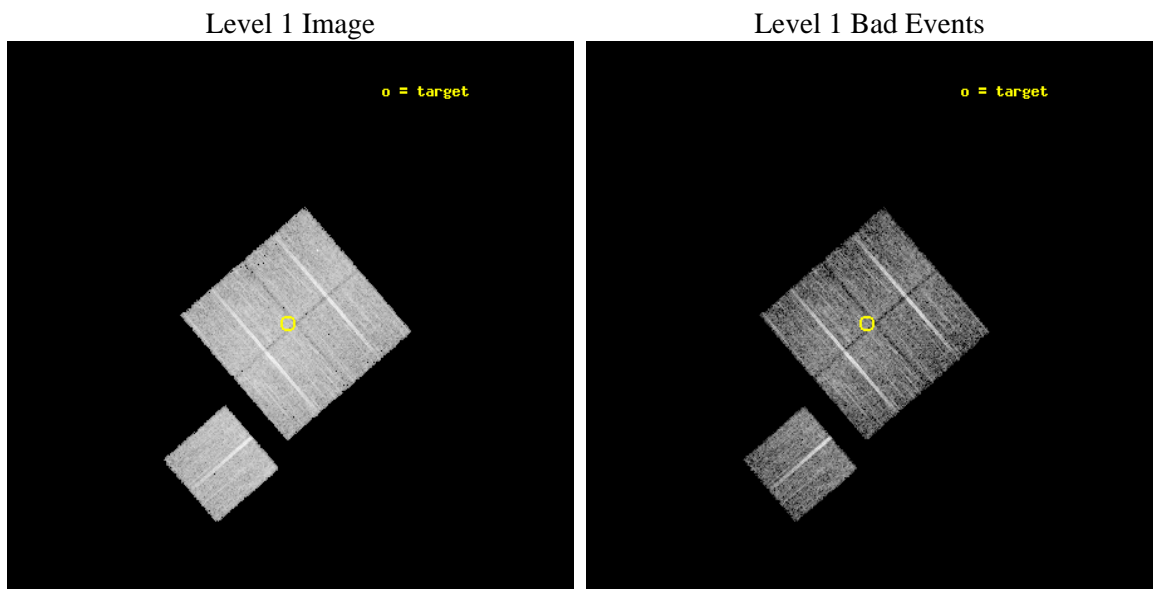
seq_num	800121	Sequence number
obs_id	2455	Observation id
title	DEEP X-RAY IMAGE OF ABELL 2163	Proposal title
observer	Dr. Stephen Murray	Principal investigator
object	ABELL 2163	Source name
dtcycle	0	
cycle	P	events from which exps? Prim/Second/Both
ra_targ	243.979167	Observer's specified target RA [deg]
dec_targ	-6.449722	Observer's specified target Dec [deg]
ra_nom	243.97485908579	Nominal RA [deg]
dec_nom	-6.4518503278854	Nominal Dec [deg]
roll_nom	229.10091241723	Nominal Roll [deg]
revision	3	Processing version of data
ontime	8769.8999831378	Sum of GTIs [s]
livetime	8655.3147835517	Livetime [s]
ontime0	8769.8999831378	Sum of GTIs [s]
ontime1	8769.8999831378	Sum of GTIs [s]
ontime2	8766.7589829713	Sum of GTIs [s]
ontime3	8769.8999831378	Sum of GTIs [s]
ontime6	8769.8999831378	Sum of GTIs [s]
l2events	23406	Number of level 2 events



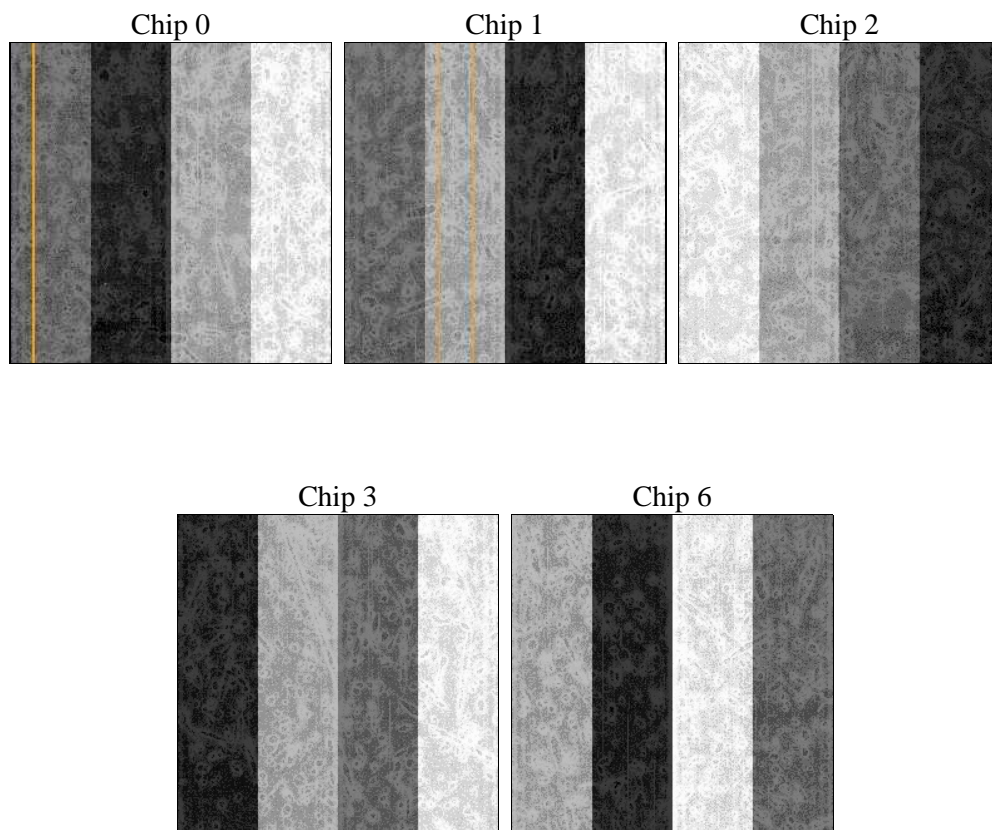
2 OBI

2.1 OBI

2.1.1 Images



2.1.2 Bias



2.1.3 Parameters

obi_num	0	Obi number	sched_exp_time	9000.000000	[s] Scheduled observation exposure time
ascdsver	8.4.5	Processing system revision	ontime	8769.8999831378	Sum of GTIs [s]
caldsver	4.5.1.1	 	ontime0	8769.8999831378	Sum of GTIs [s]
date	2012-09-17T21:29:09	Date and time of file creation	ontime1	8769.8999831378	Sum of GTIs [s]
revision	3	Processing version of data	ontime2	8766.7589829713	Sum of GTIs [s]
			ontime3	8769.8999831378	Sum of GTIs [s]
			ontime6	8769.8999831378	Sum of GTIs [s]
			l1events	264059	Number of level 1 events

2.1.4 Events

	ccd 0	ccd 1	ccd 2	ccd 3	ccd 6
level 1 events	48169	50122	56923	54338	54507
rejected events	42481	43630	51090	49193	48259
rejected %	88%	87%	89%	90%	88%

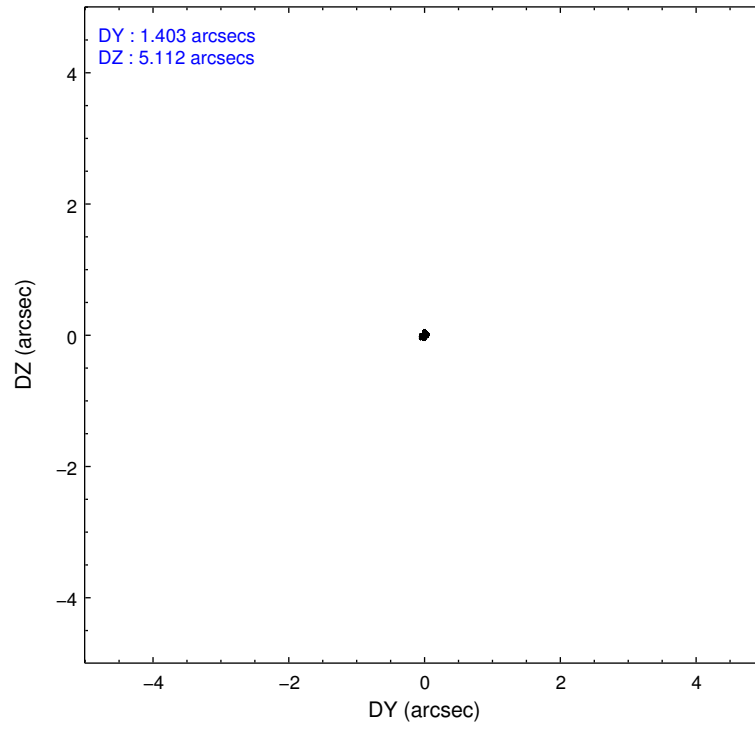
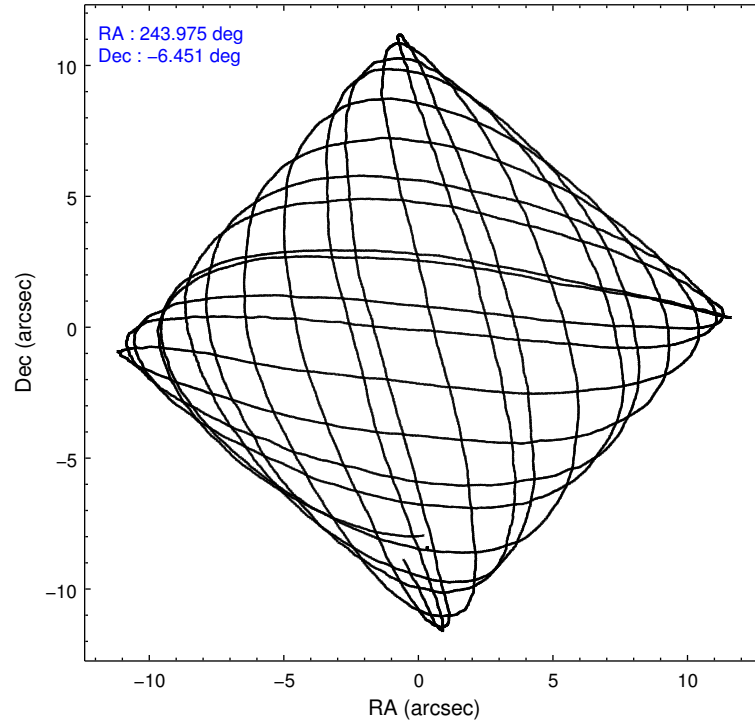
	ccd 0	ccd 1	ccd 2	ccd 3	ccd 6
grade 0 events	2367	2776	2513	2130	2801
	4%	5%	4%	3%	5%
grade 1 events	23	31	32	18	30
	0%	0%	0%	0%	0%
grade 2 events	1248	1340	1297	1043	1242
	2%	2%	2%	1%	2%
grade 3 events	564	640	510	539	605
	1%	1%	0%	0%	1%
grade 4 events	560	644	598	530	625
	1%	1%	1%	0%	1%
grade 5 events	1534	1608	1495	1685	1741
	3%	3%	2%	3%	3%
grade 6 events	953	1096	921	903	980
	1%	2%	1%	1%	1%
grade 7 events	40920	41987	49557	47490	46483
	84%	83%	87%	87%	85%

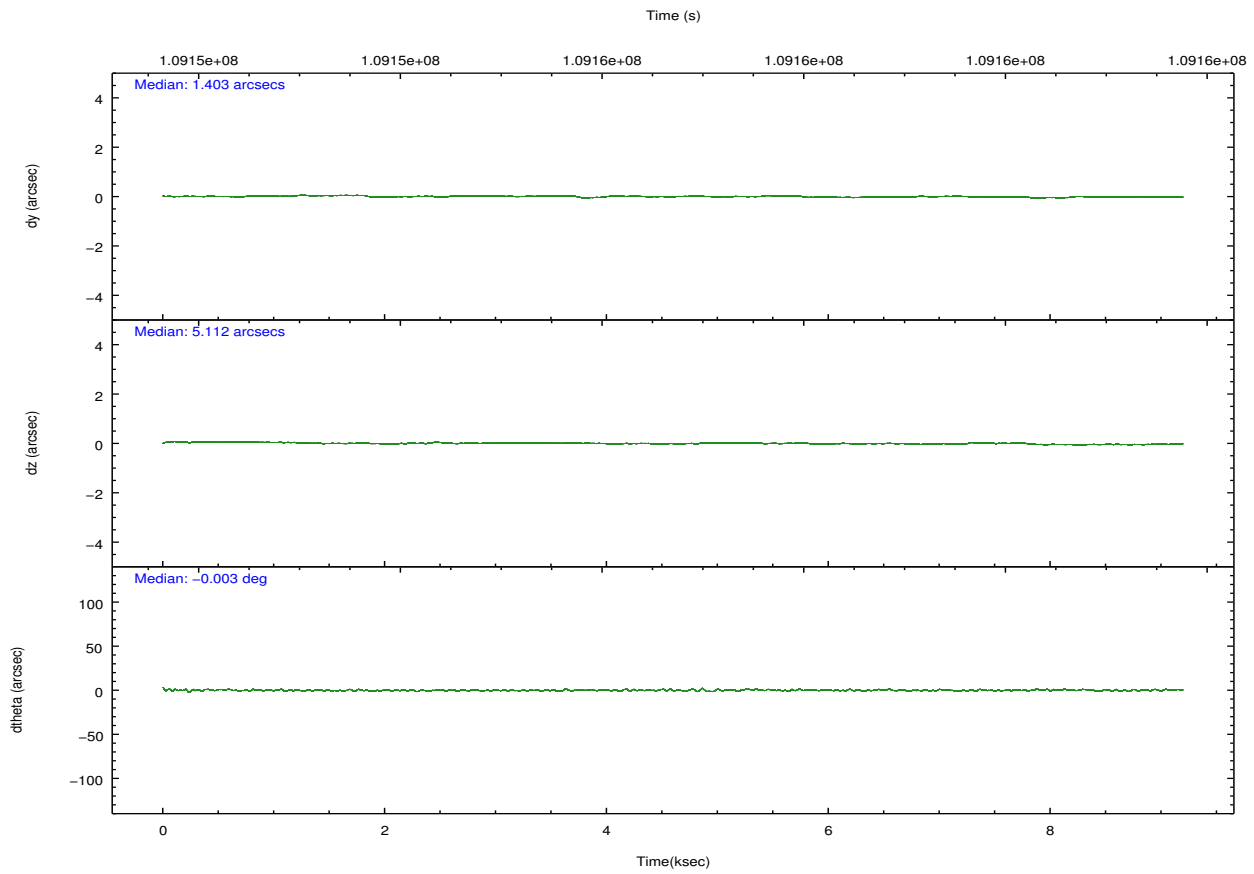
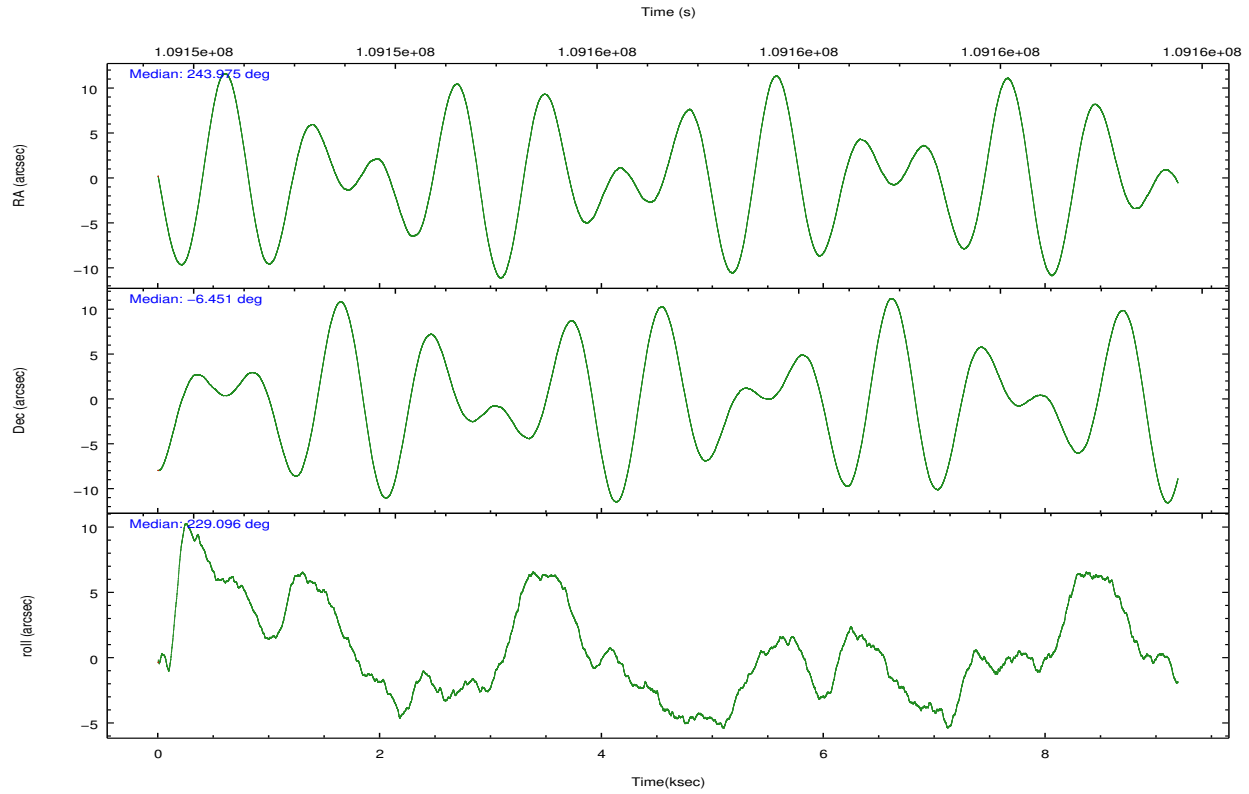
2.2 Compared Parameters

Parameter	Planned	Actual
Instrument	ACIS	ACIS
Detector	ACIS-01236	ACIS-01236
Grating	NONE	NONE
Data mode	VFAINT	VFAINT
Observation mode	POINTING	POINTING
[deg] Pointing RA	243.980076	243.9748590857912
[deg] Pointing Dec	-6.424853	-6.451850327885353
[deg] Pointing Roll	228.892803	229.1009124172302
[mm] SIM focus pos	-0.782348	-0.7809083437167272
[mm] SIM defocus	0	0.001439871863259334
[mm] SIM translation stage pos	-233.592463	-233.5874344608287
[mm] SIM translation stage offset	0	-0.005018542100998502
[s] Observation start time (MET)	109152303.184000	109151907.8981
Observation start date	2001-06-17T08:03:59	2001-06-17T07:58:27
[s] Observation end time (MET)	109161303.184000	109162244.511
Observation end date	2001-06-17T10:33:59	2001-06-17T10:50:44
Read mode	TIMED	TIMED

Parameter	Planned	Actual
Obspar format version number	7	7
Obspar file type	PREDICTED	ACTUAL
Obspar update status	NONE	UPDATED
Number of optional ACIS chips dropped	0	0
On-chip summing requested	N	N
Subarray requested	NONE	NONE
Alternating exposures requested	N	N
[s] Primary exposure time	0.000000	3.1

2.3 Aspect



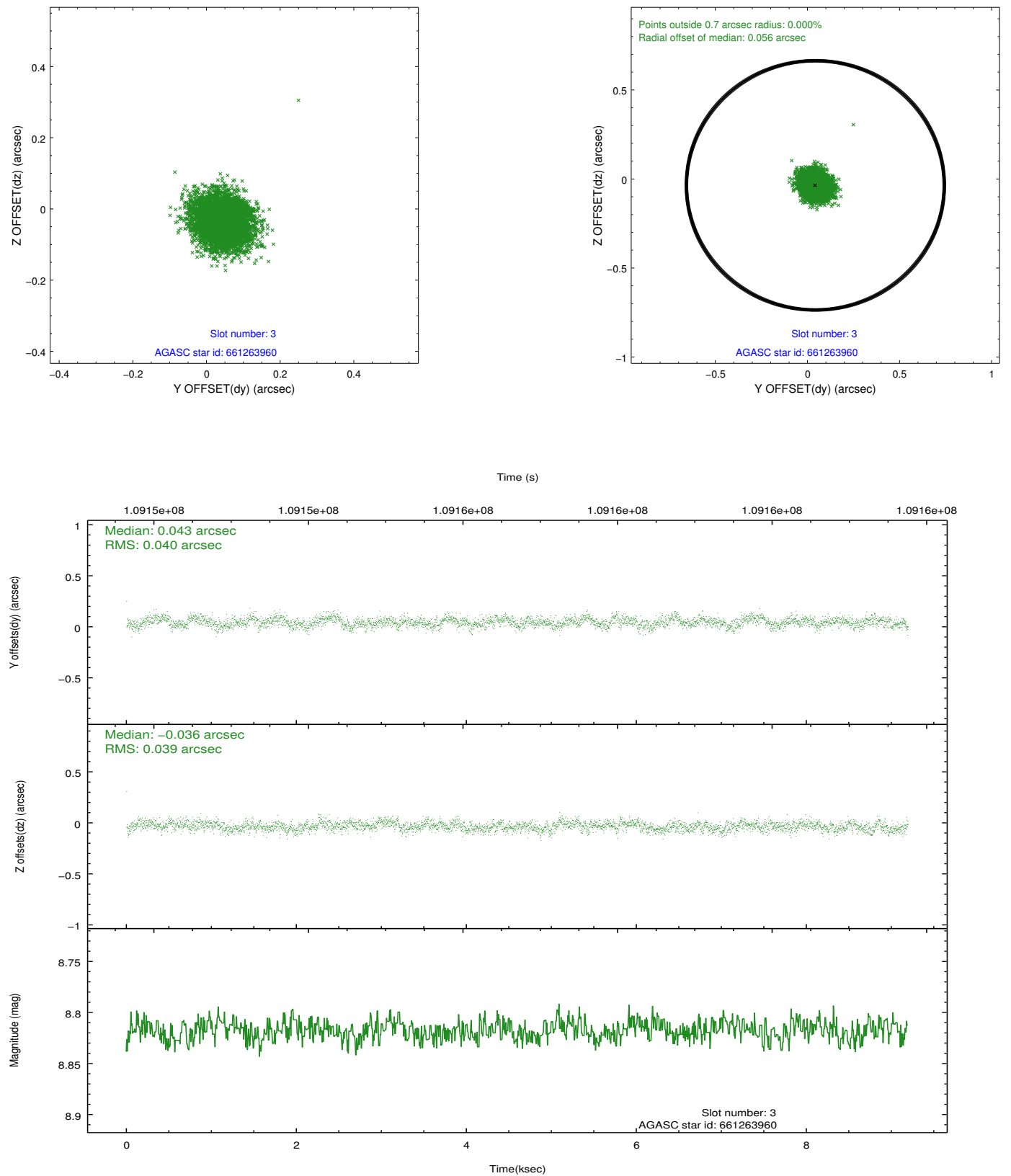


Slot Statistics

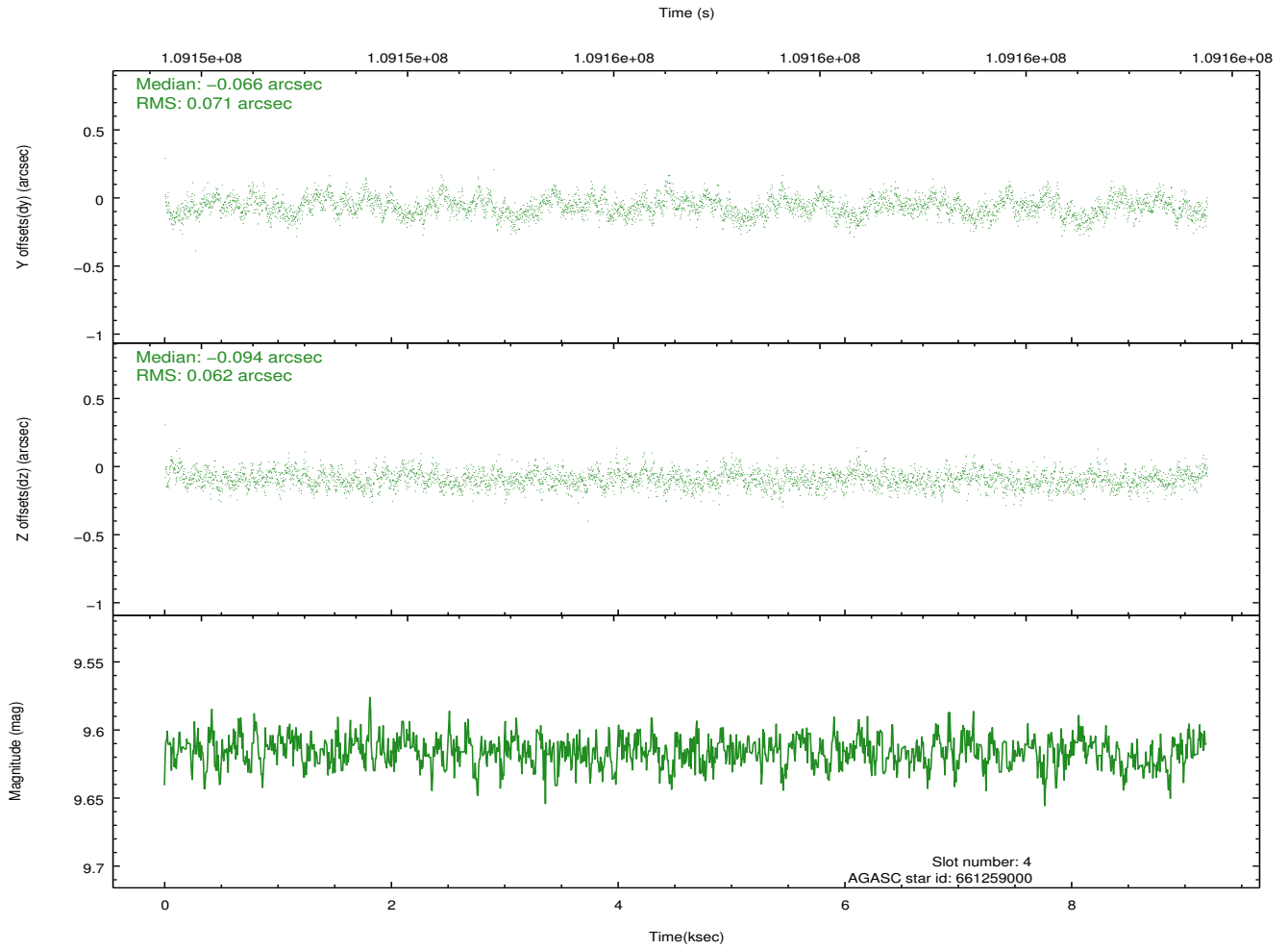
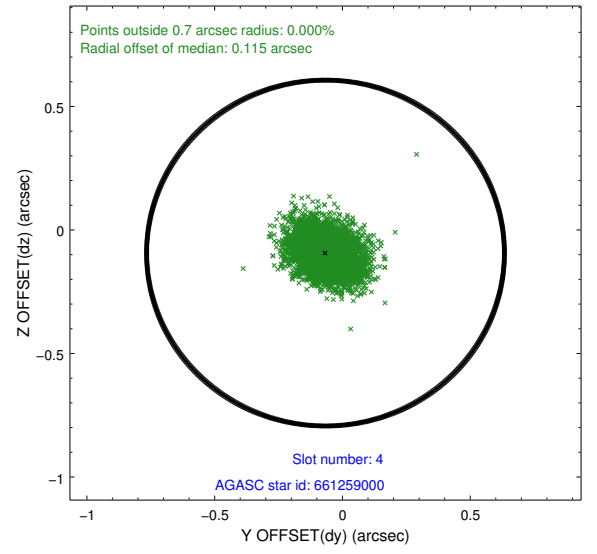
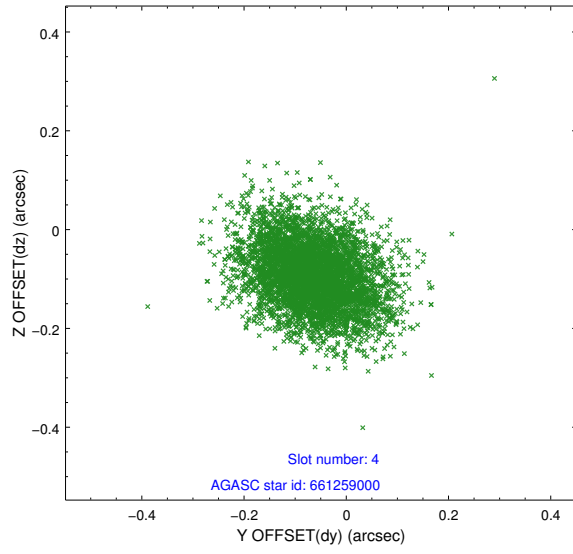
slot	status	id	mag	n_pts	med_dy	med_dz	dr1	dr2	ra	dec	mean_y	mean_z
0	FID	ACIS-I-2	7.15	2243	-0.024	-0.046	0.009	0.015	0.000000	0.000000	-755.75	-834.87
1	FID	ACIS-I-4	7.18	2243	-0.029	0.035	0.006	0.011	0.000000	0.000000	2158.02	1071.11
2	FID	ACIS-I-5	7.23	2243	-0.048	0.080	0.009	0.014	0.000000	0.000000	-1808.86	1069.65
3	GUIDE	661263960	8.82	4486	0.043	-0.036	0.060	0.097	243.699208	-6.487994	832.72	-606.75
4	GUIDE	661259000	9.62	4481	-0.066	-0.094	0.100	0.166	243.433065	-6.229365	758.53	-1936.66
5	GUIDE	661394632	8.68	4485	-0.038	-0.053	0.075	0.125	244.012741	-6.597743	392.89	497.33
6	GUIDE	661395928	9.72	4479	0.034	-0.018	0.097	0.155	244.257186	-6.222729	-1199.37	269.57
7	GUIDE	661390128	9.64	4484	0.025	0.202	0.165	0.248	244.116883	-6.978813	1181.57	1680.51

2.4 Star Slots

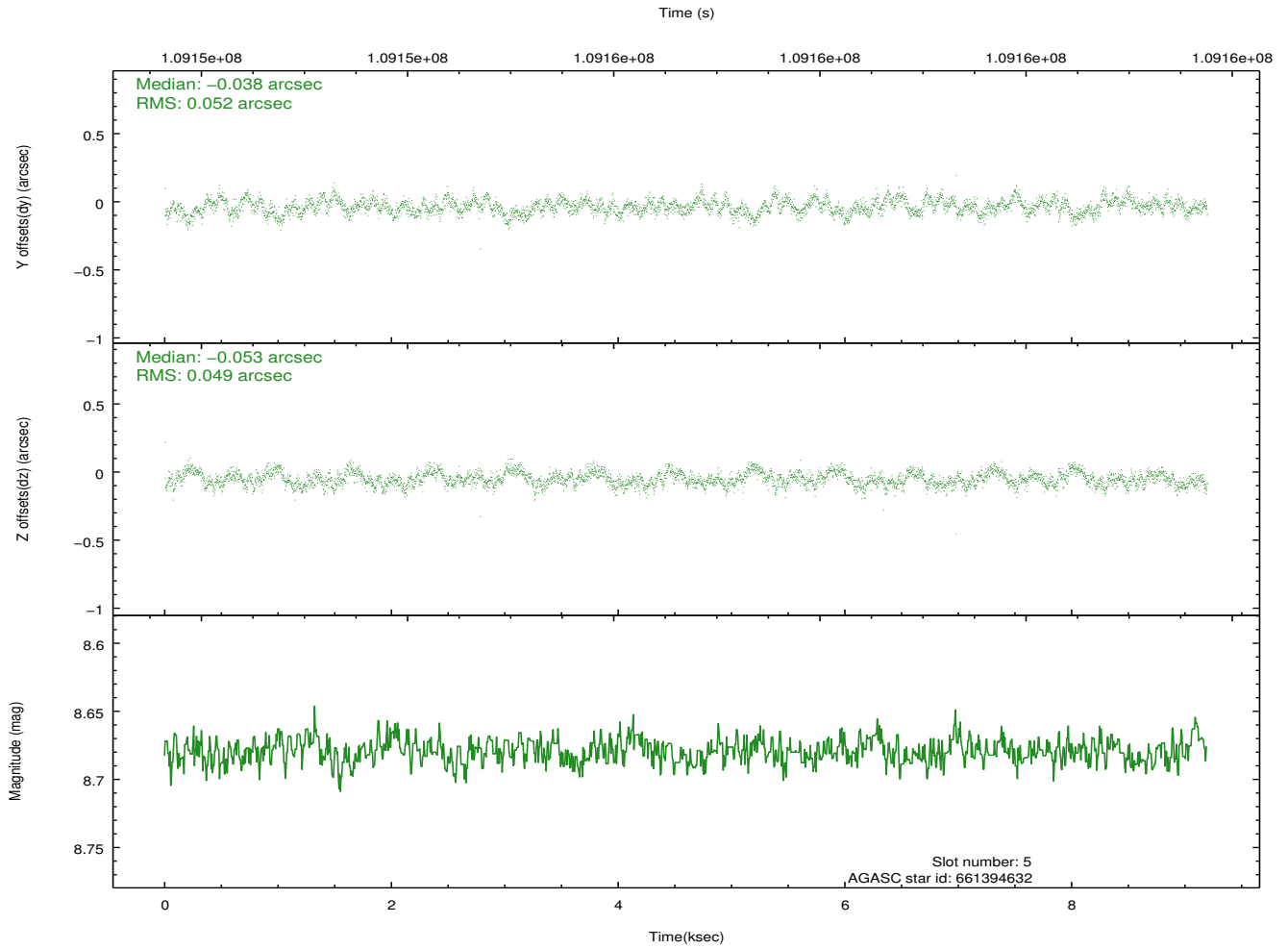
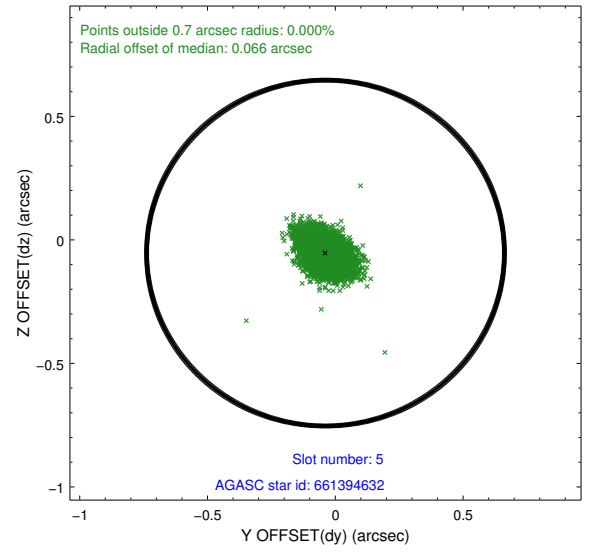
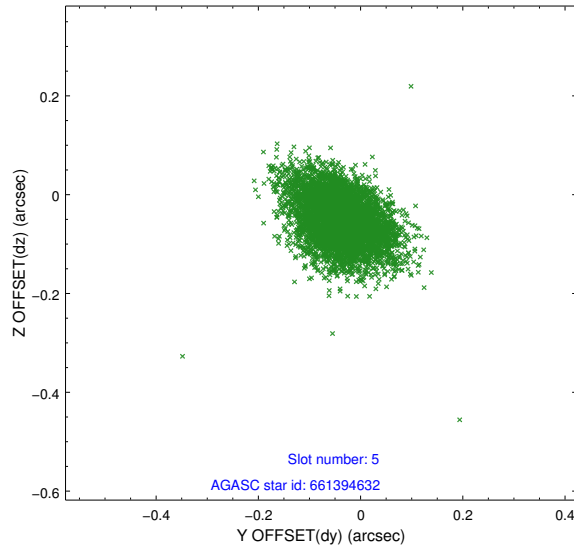
2.4.1 Slot 3



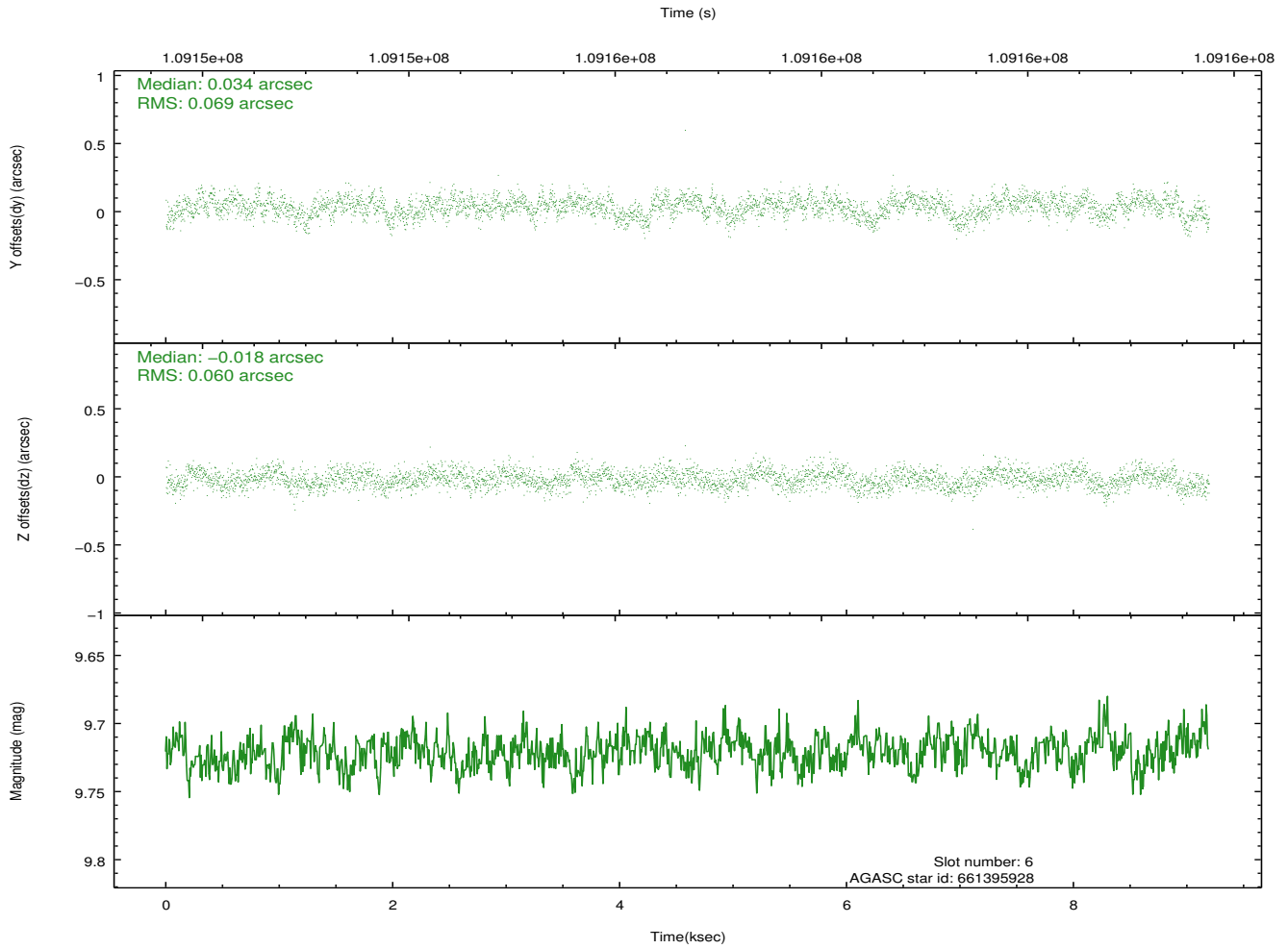
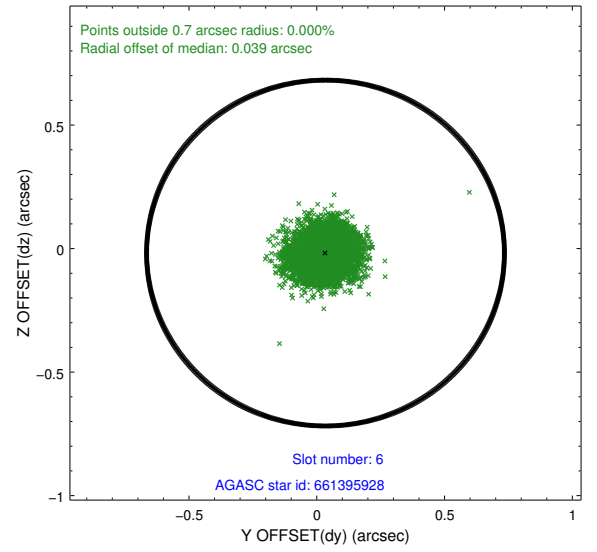
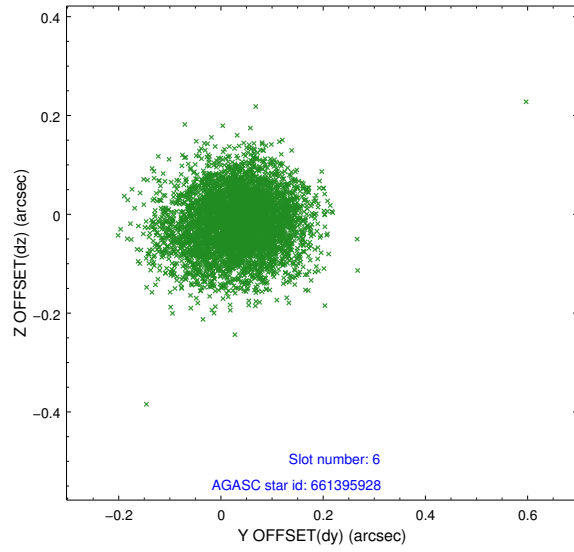
2.4.2 Slot 4



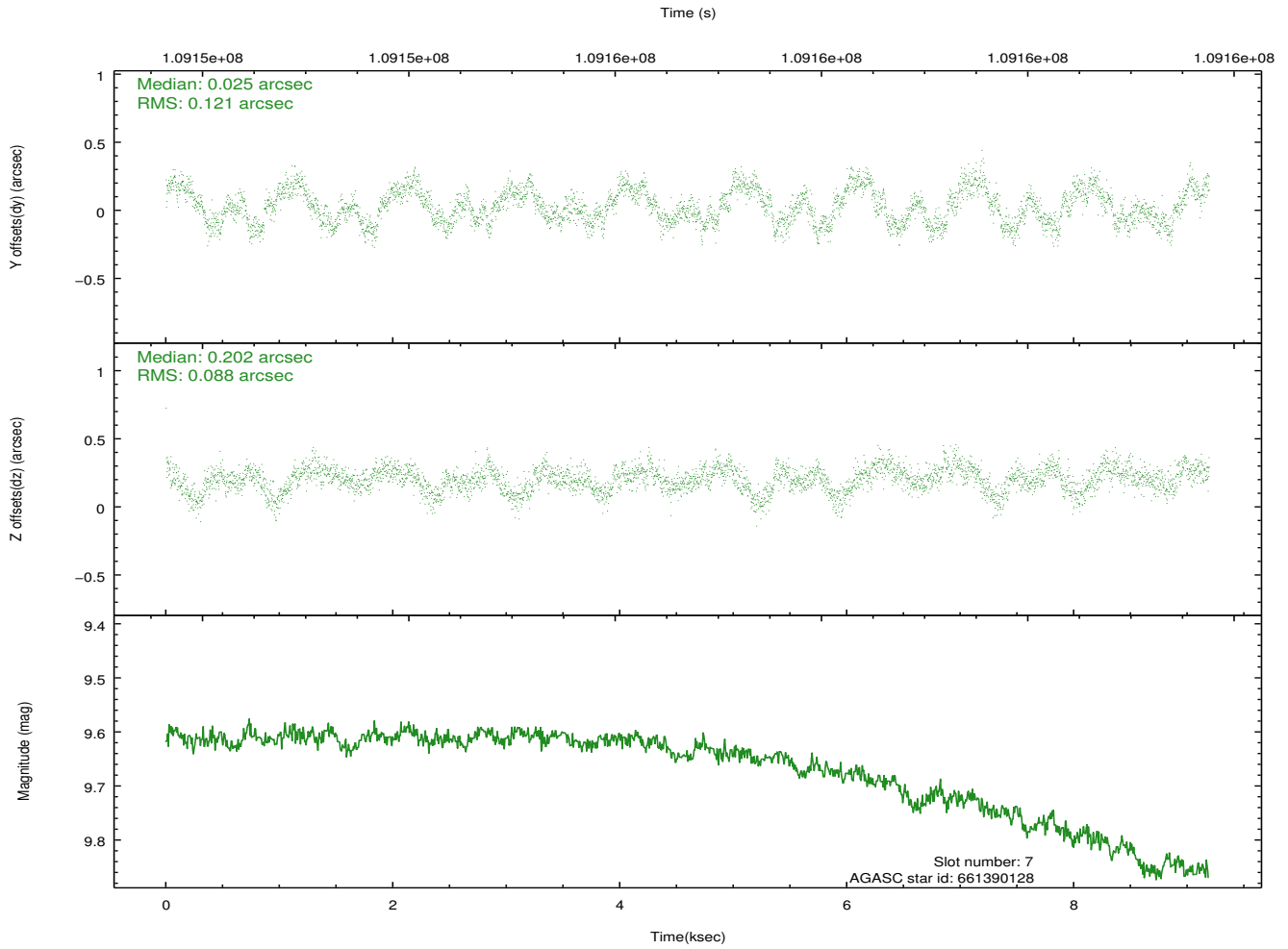
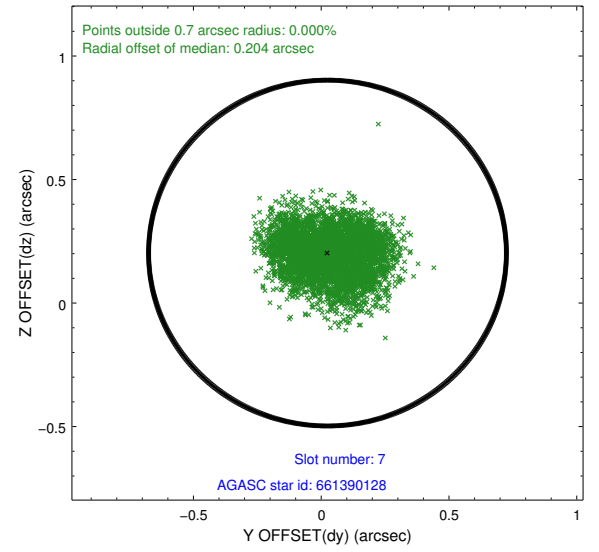
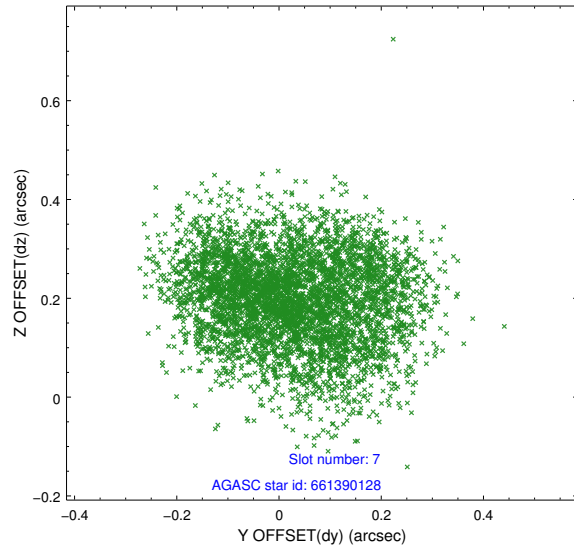
2.4.3 Slot 5



2.4.4 Slot 6

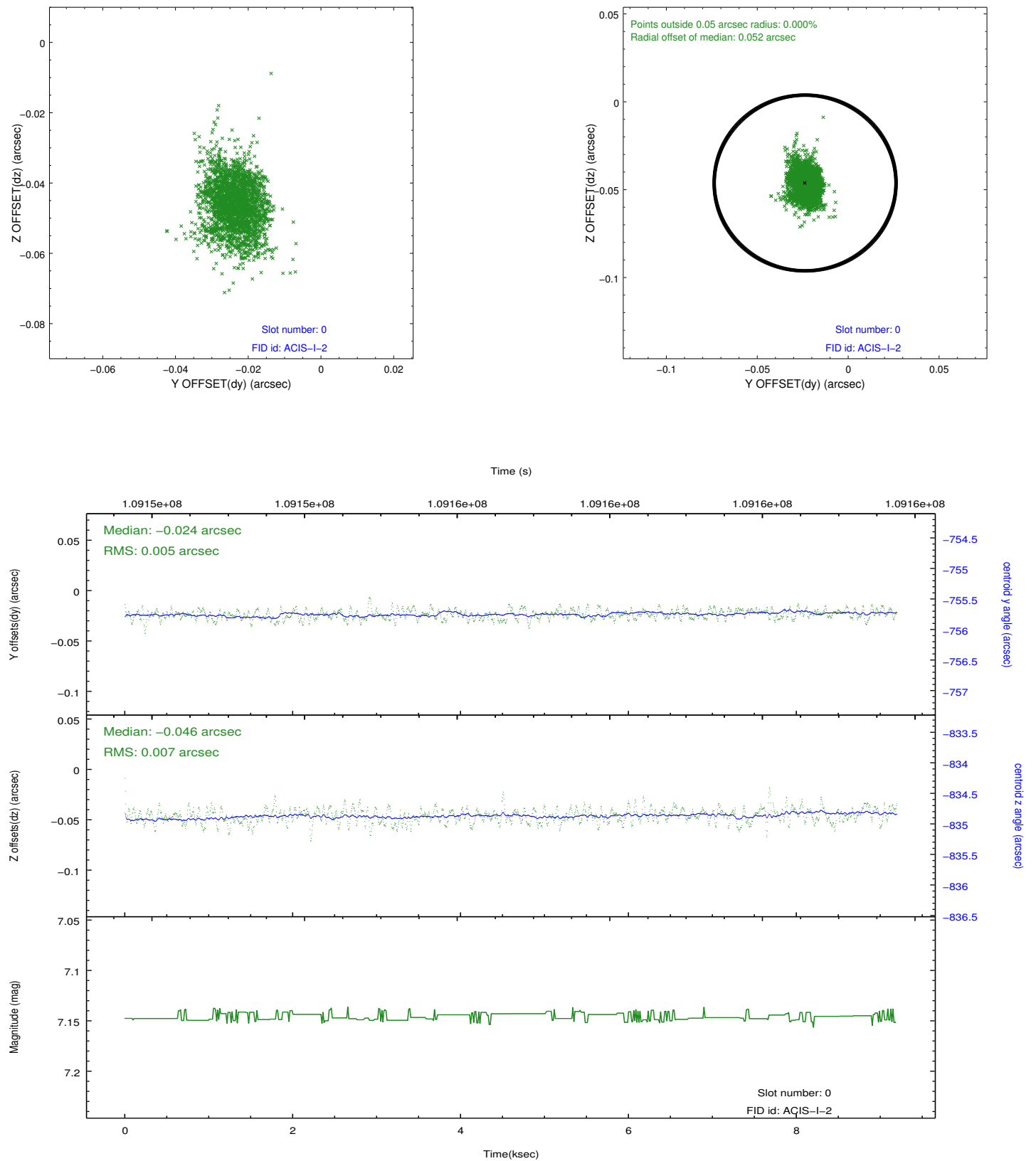


2.4.5 Slot 7

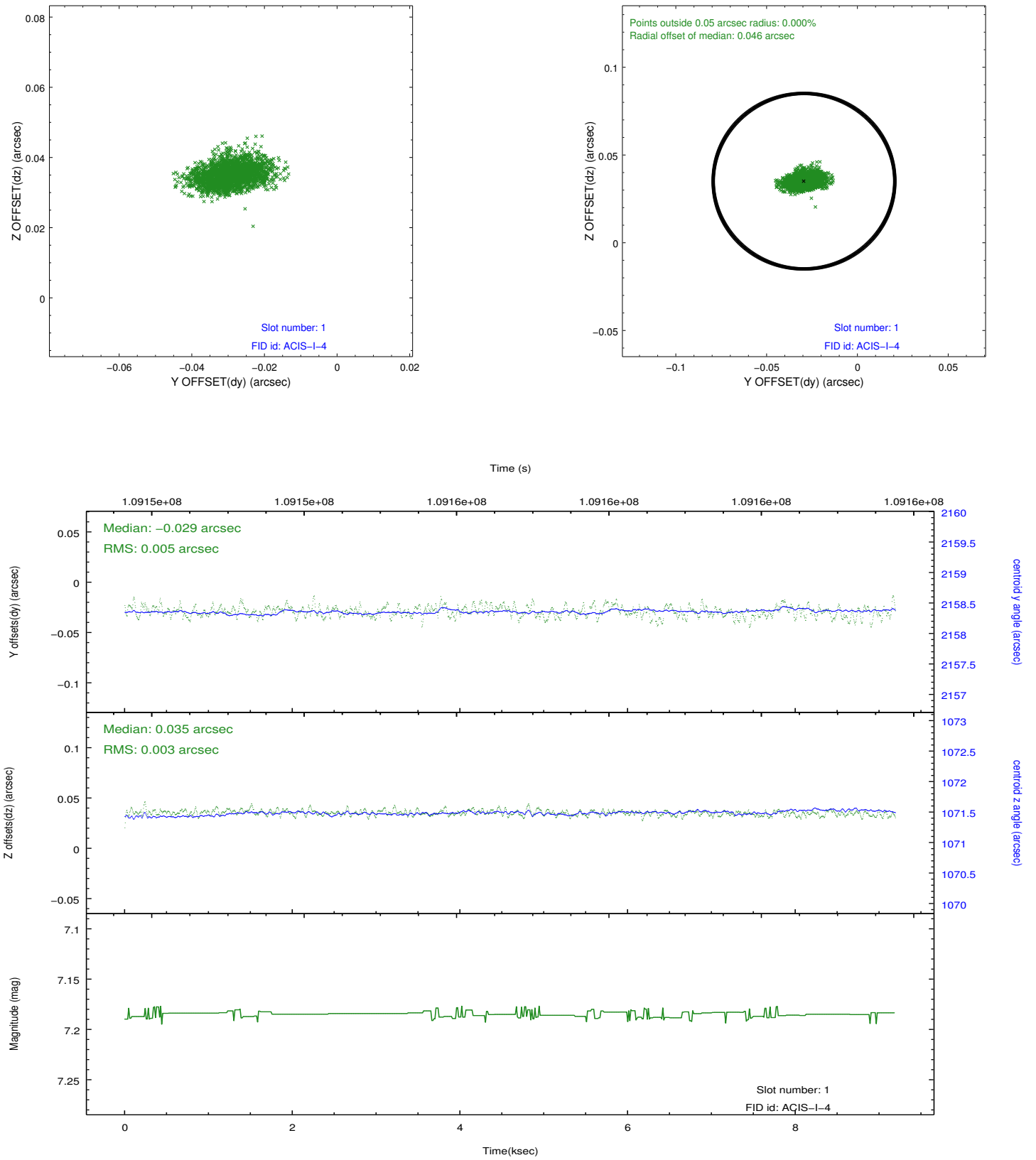


2.5 FID Slots

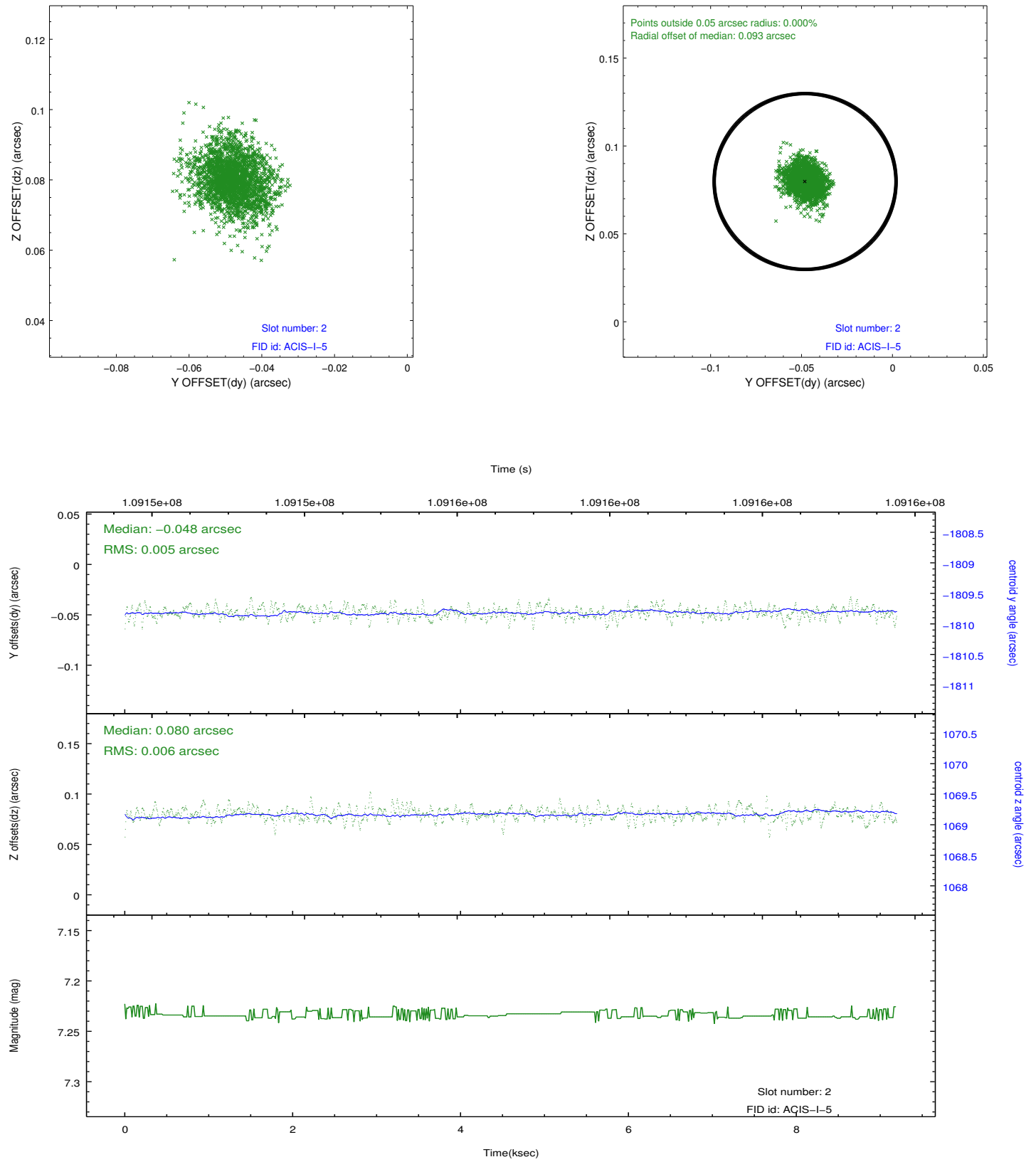
2.5.1 Slot 0



2.5.2 Slot 1



2.5.3 Slot 2



A Summary

A.1 Status

V&V Scientist	Jen Lauer
V&V Date (YYYY-MM-DD)	2012.09.20
V&V Edition	1
V&V Disposition and Status	OK
V&V Charge Time	8.772

A.2 Comments