

V&V Reference Report

L2 ASCDS Version : 7.6.10

Observation 1865 - L2 Version 002
Chandra X-Ray Center

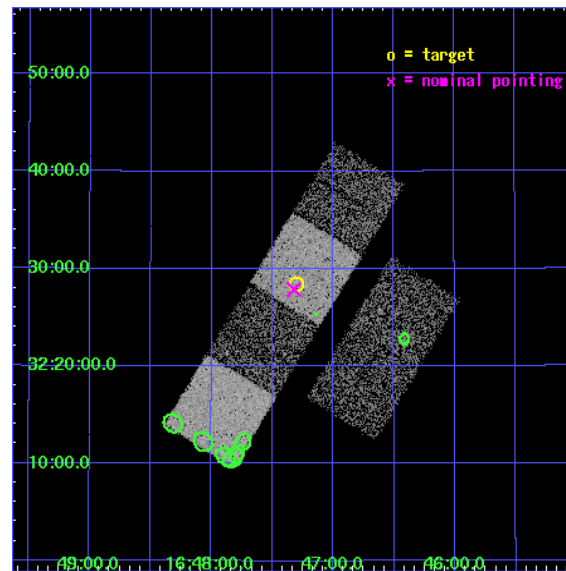
L2 Processing Date : Jan 10 2007

Contents

1	Front	2
2	OBI	3
2.1	OBI	3
2.1.1	Images	3
2.1.2	Bias	3
2.1.3	Parameters	4
2.1.4	Events	4
2.2	Compared Parameters	5
2.3	Aspect	6
2.4	Star Slots	9
2.4.1	Slot 3	9
2.4.2	Slot 4	10
2.4.3	Slot 5	11
2.4.4	Slot 6	12
2.4.5	Slot 7	13
2.5	FID Slots	14
2.5.1	Slot 0	14
2.5.2	Slot 1	15
2.5.3	Slot 2	16
3	Point Sources	17
A	Summary	18
A.1	Status	18
A.2	Comments	18

1 Front

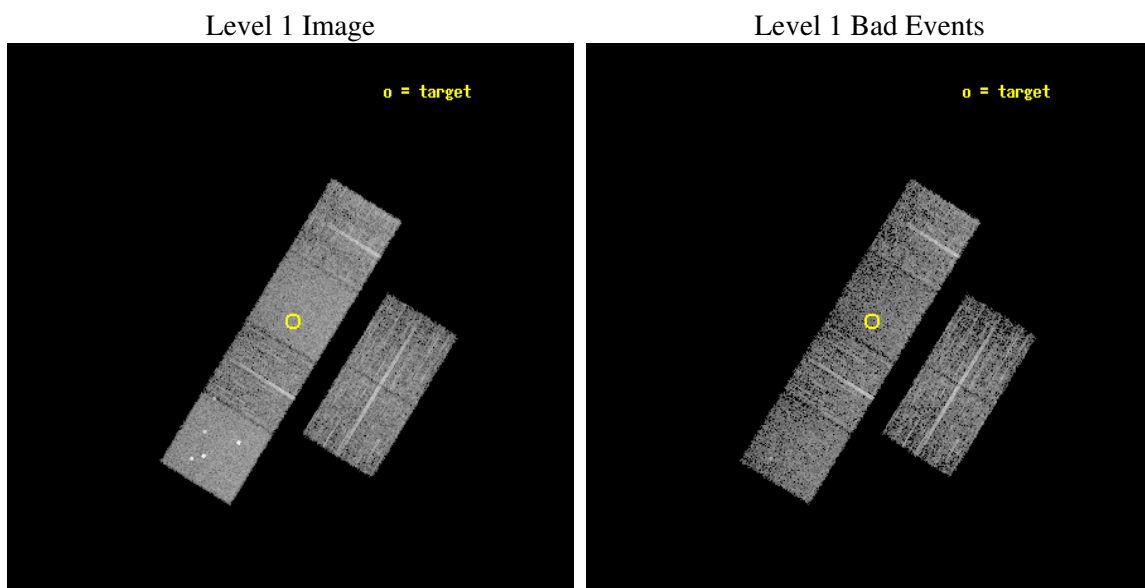
seq_num	200093
obs_id	1865
title	A SEARCH FOR CORONAL X-RAYS FROM WHITE DWARFS BY CHANDRA
observer	Dr. Zdzislaw Musielak
object	GD 358
dtcycle	0
cycle	P
ra_targ	251.82625
dec_targ	32.47375
ra_nom	251.83058355629
dec_nom	32.464683417371
roll_nom	301.54986706413
revision	3
ontime	4947.2000046074
livetime	4884.5555793029
ontime2	4947.2000046074
ontime3	4947.2000046074
ontime5	4947.2000046074
ontime6	4947.2000046074
ontime7	4947.2000046074
ontime8	4947.2000046074
l2events	46389



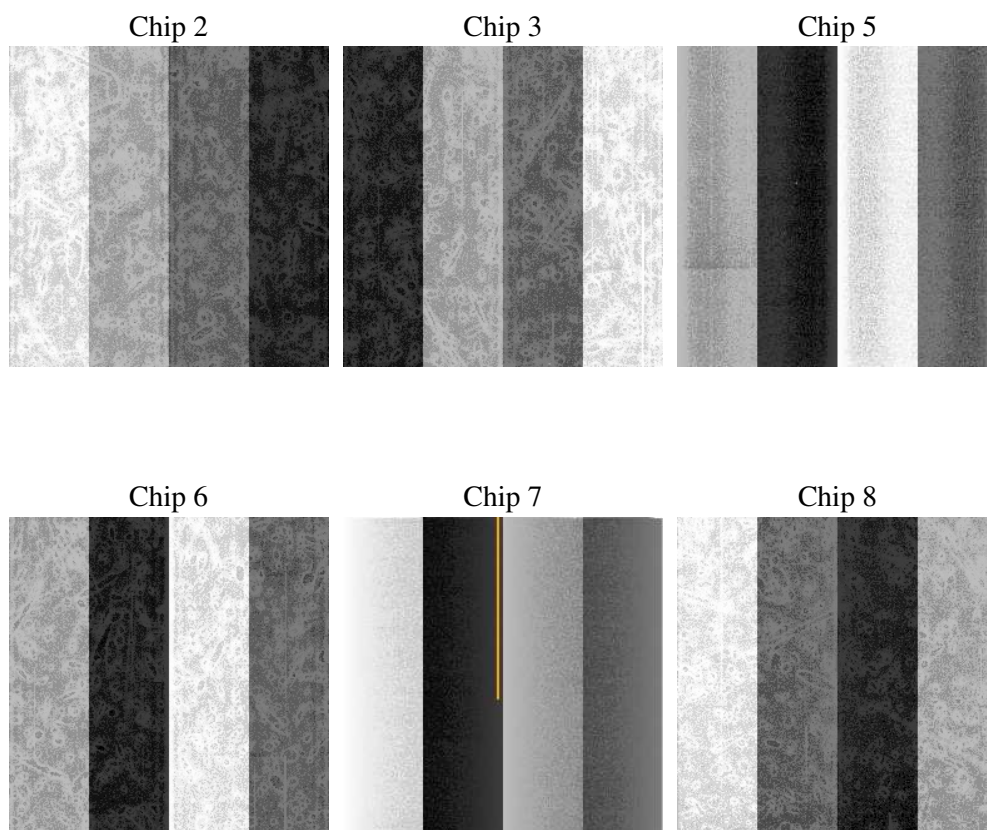
2 OBI

2.1 OBI

2.1.1 Images



2.1.2 Bias



2.1.3 Parameters

obi_num	0
ascdsver	7.6.10
caldsver	3.3.0
date	2007-01-10T12:56:34
revision	3

sched_exp_time	5000.000000
ontime	4947.2000046074
ontime2	4947.2000046074
ontime3	4947.2000046074
ontime5	4947.2000046074
ontime6	4947.2000046074
ontime7	4947.2000046074
ontime8	4947.2000046074
l1events	213827

2.1.4 Events

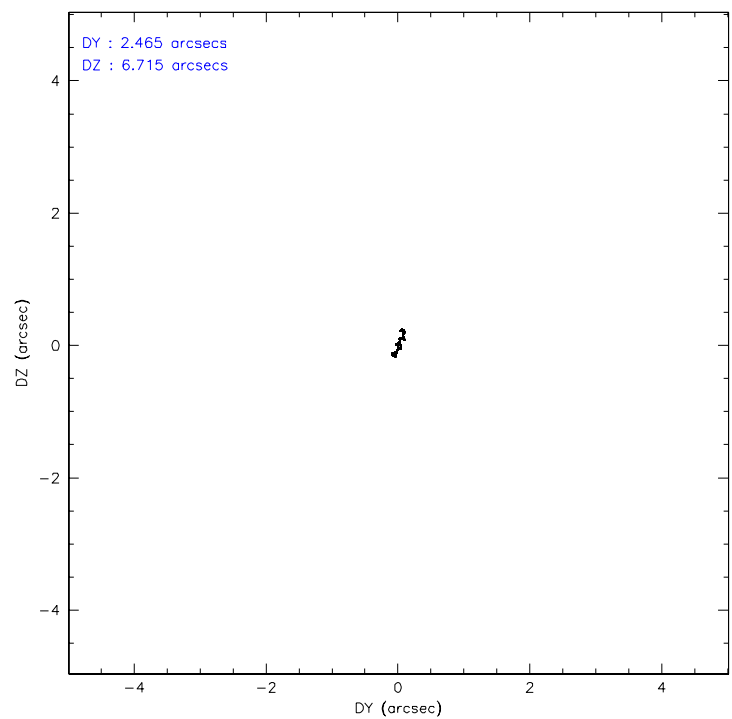
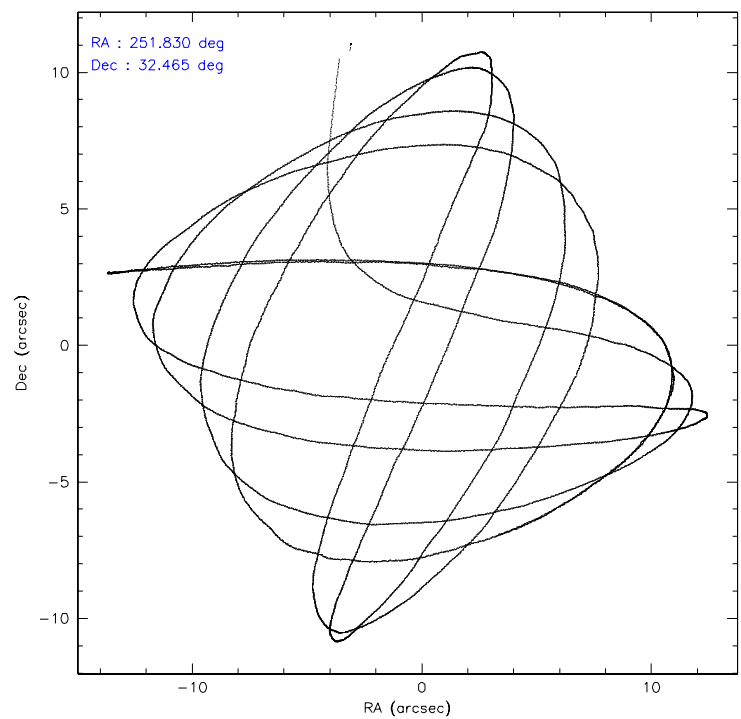
	ccd 2	ccd 3	ccd 5	ccd 6	ccd 7	ccd 8
level 1 events	31538	29191	45034	31456	38768	37840
rejected events	28141	25811	23345	27911	22591	30080
rejected %	89%	88%	51%	88%	58%	79%

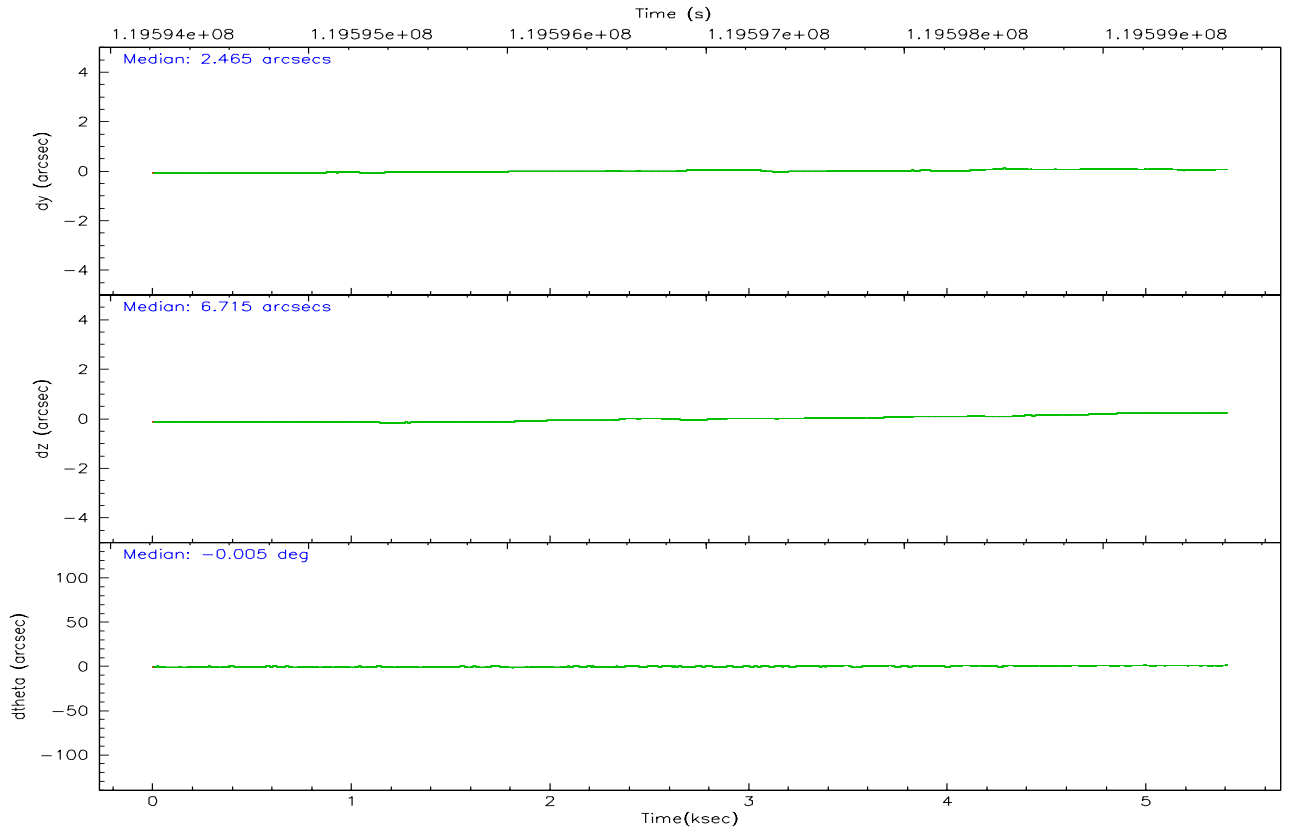
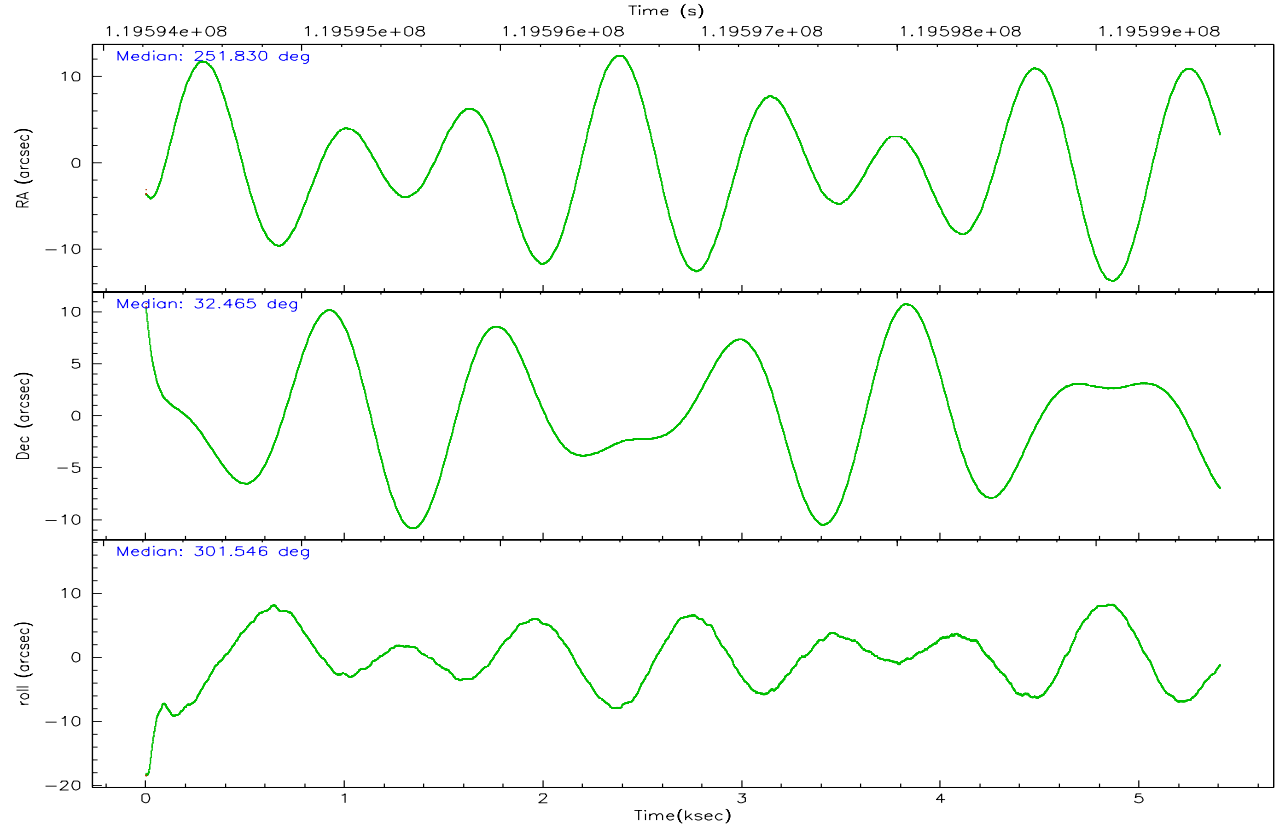
	ccd 2	ccd 3	ccd 5	ccd 6	ccd 7	ccd 8
grade 0 events	1425	1448	4333	1485	1553	2503
	4%	4%	9%	4%	4%	6%
grade 1 events	18	14	148	16	30	26
	0%	0%	0%	0%	0%	0%
grade 2 events	734	727	5558	748	3179	1580
	2%	2%	12%	2%	8%	4%
grade 3 events	301	288	828	333	1516	930
	0%	0%	1%	1%	3%	2%
grade 4 events	341	301	798	348	1457	861
	1%	1%	1%	1%	3%	2%
grade 5 events	1045	1172	3270	1278	3763	1688
	3%	4%	7%	4%	9%	4%
grade 6 events	599	623	10188	640	8504	1890
	1%	2%	22%	2%	21%	4%
grade 7 events	27075	24618	19911	26608	18766	28362
	85%	84%	44%	84%	48%	74%

2.2 Compared Parameters

Parameter	Planned	Actual	Parameter	Planned	Actual
Instrument	ACIS	ACIS	Obspar format version number	6	6
Detector	ACIS-235678	ACIS-235678	Obspar file type	PREDICTED	ACTUAL
Grating	NONE	NONE	Obspar update status	NONE	UPDATED
Data mode	FAINT	FAINT	Number of optional ACIS chips dropped	0	0
Observation mode	POINTING	POINTING	On-chip summing requested	N	N
Pointing RA	251.801856	251.830583556289	Subarray requested	NONE	NONE
Pointing Dec	32.477392	32.4646834173708	Alternating exposures requested	N	N
Pointing Roll	301.408713	301.5498670641276	Primary exposure time	0.000000	3.2
SIM focus pos (mm)	-0.684267	-0.6828225247311905			
SIM defocus (mm)	0	0.001444936568705701			
SIM translation stage pos (mm)	-190.132523	-190.1425803651734			
SIM translation stage offset (mm)	0	0.01005778216563158			
Observation start time	119594626.184000	119593553.58426			
Observation start date	2001-10-16T04:42:42	2001-10-16T04:25:53			
Observation end time	119599626.184000	119600202.24702			
Observation end date	2001-10-16T06:06:02	2001-10-16T06:16:42			
Read mode	TIMED	TIMED			

2.3 Aspect



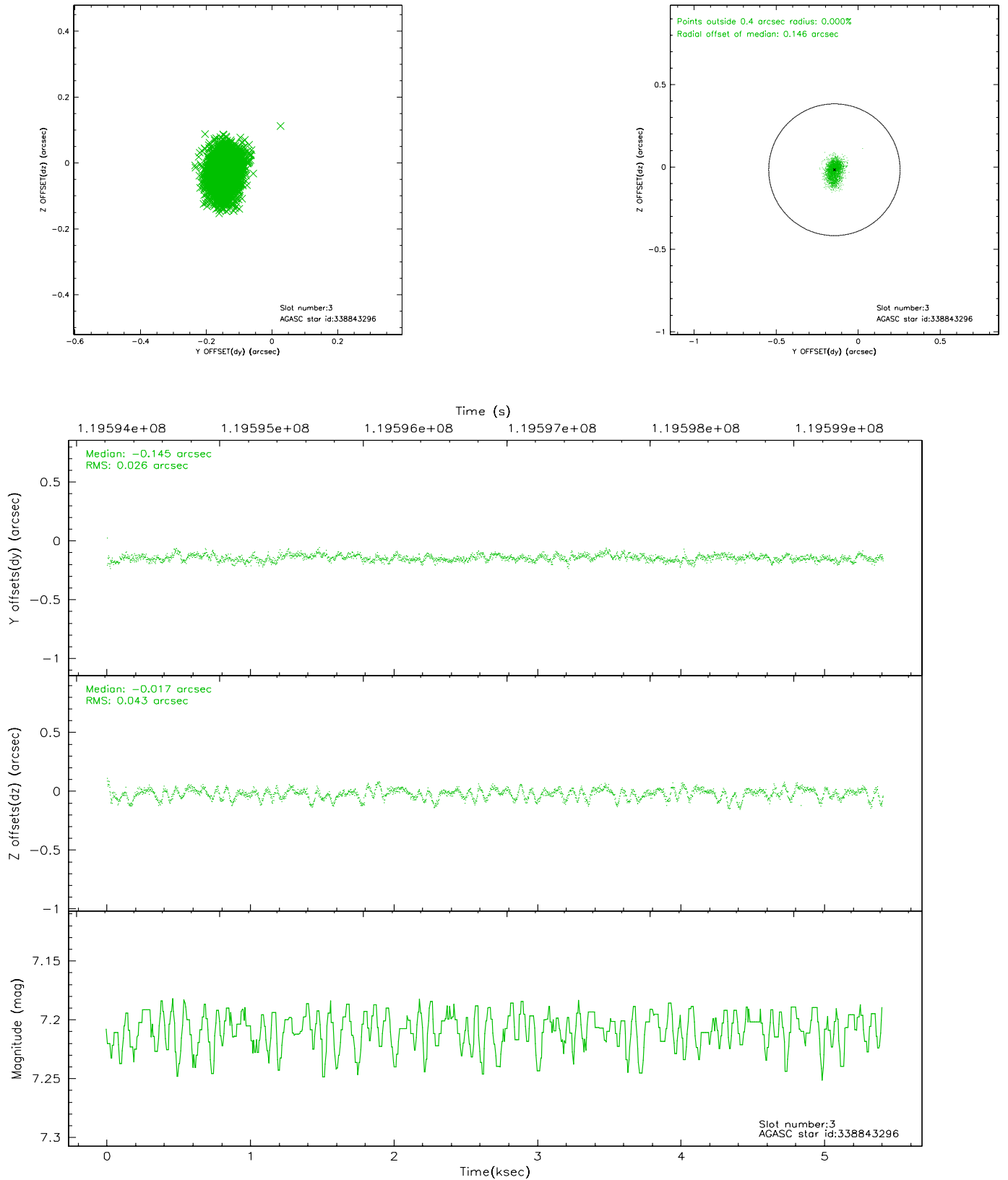


Slot Statistics

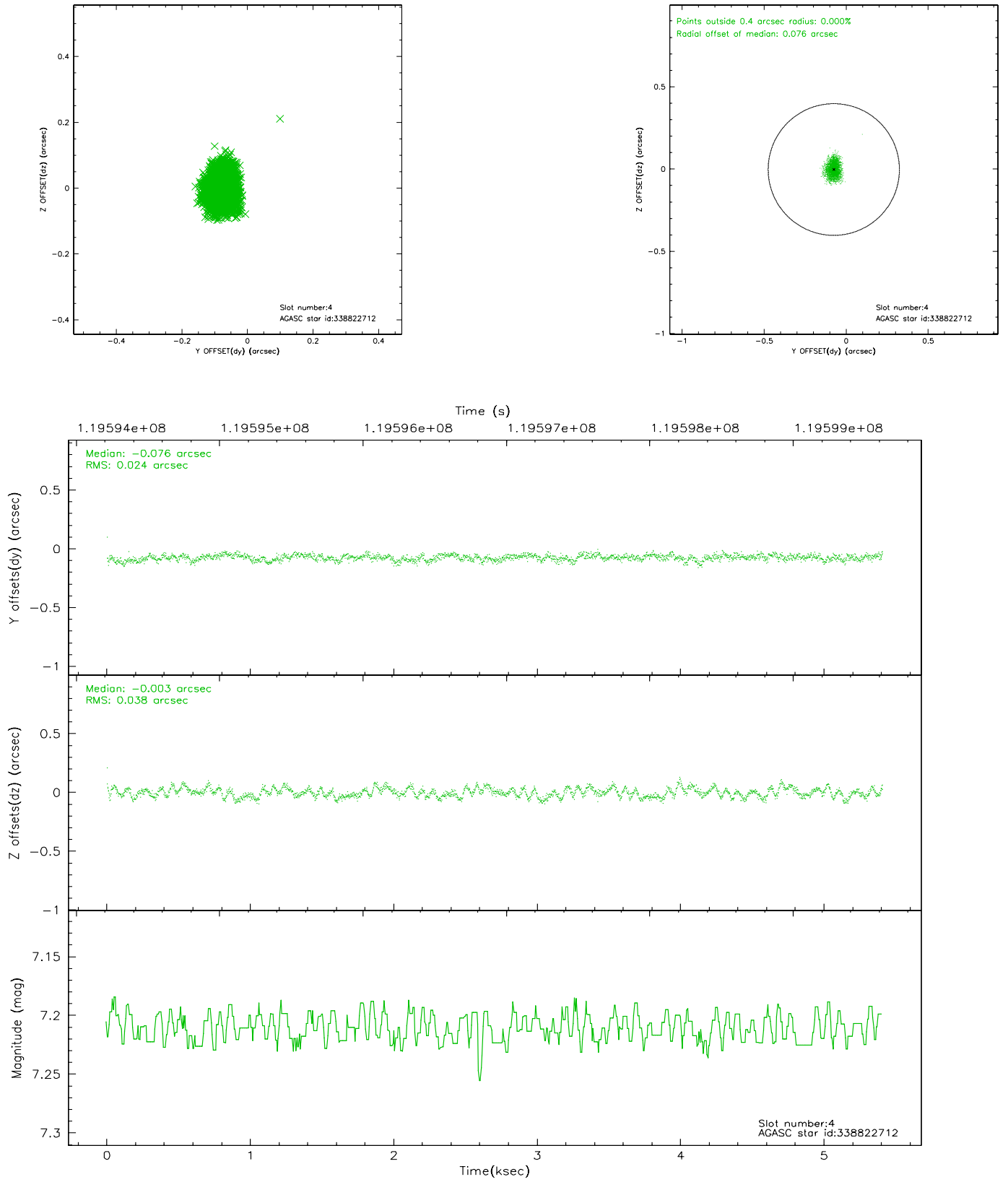
slot	status	id	mag	n_pts	med_dy	med_dz	dr1	dr2	ra	dec	mean_y	mean_z
0	FID	ACIS-S-2	7.11	1320	-0.016	0.023	0.007	0.011	0.000000	0.000000	-755.09	-1727.81
1	FID	ACIS-S-4	7.20	1320	-0.065	0.002	0.005	0.009	0.000000	0.000000	2157.61	179.54
2	FID	ACIS-S-5	7.24	1320	0.049	-0.016	0.006	0.011	0.000000	0.000000	-1806.46	174.41
3	GUIDE	338843296	7.21	2639	-0.145	-0.017	0.052	0.090	250.910518	32.692307	-2076.52	-1895.60
4	GUIDE	338822712	7.21	2639	-0.076	-0.003	0.048	0.076	251.186140	32.591929	-1329.70	-1376.70
5	GUIDE	338429864	8.66	2639	0.035	-0.032	0.074	0.115	251.252970	32.279622	-266.14	-1794.87
6	GUIDE	338441912	9.42	2636	0.042	0.036	0.096	0.159	251.414378	31.872106	1241.54	-2145.77
7	GUIDE	338429000	9.34	2631	0.139	0.020	0.079	0.135	251.654115	32.276529	384.04	-760.93

2.4 Star Slots

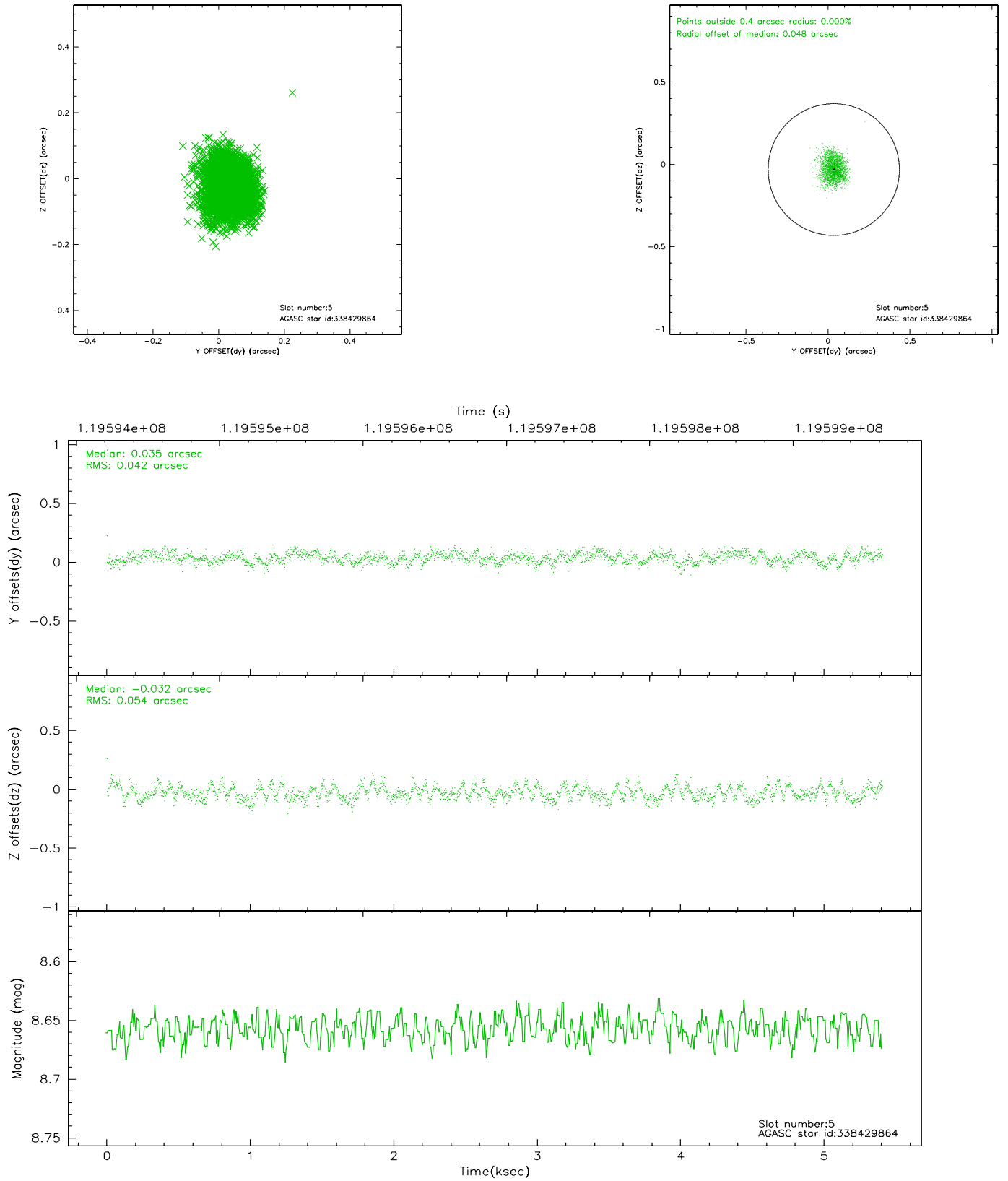
2.4.1 Slot 3



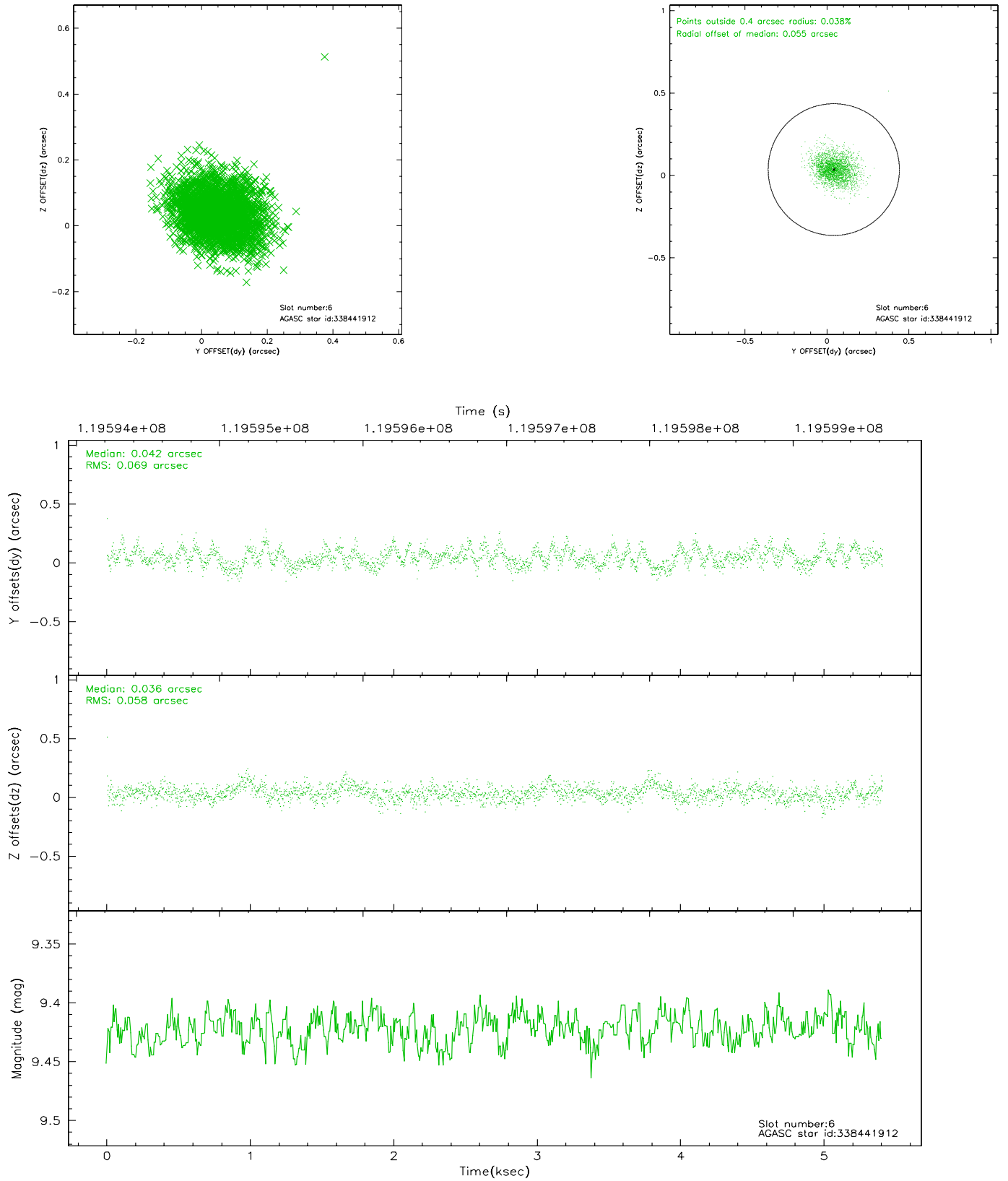
2.4.2 Slot 4



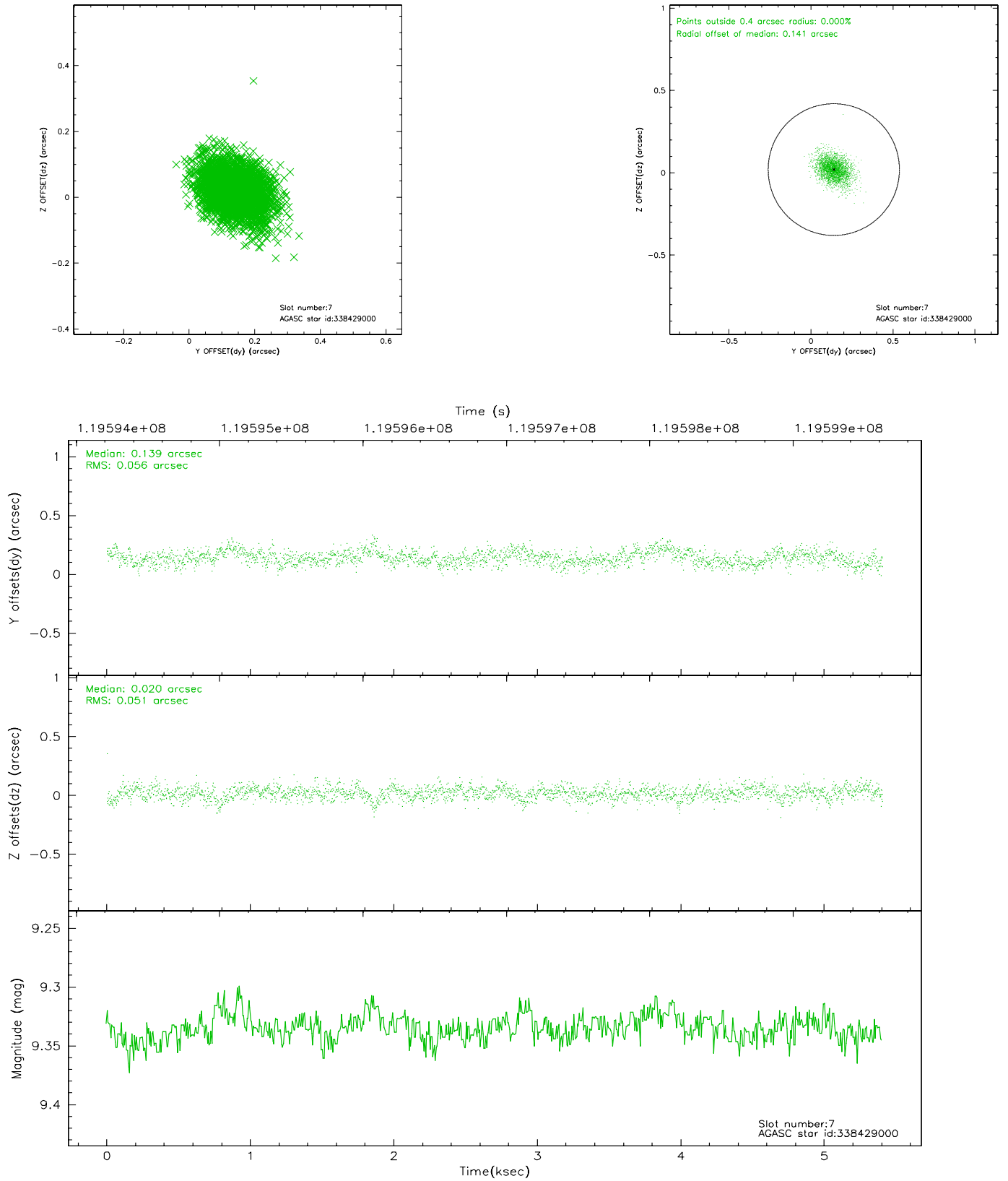
2.4.3 Slot 5



2.4.4 Slot 6

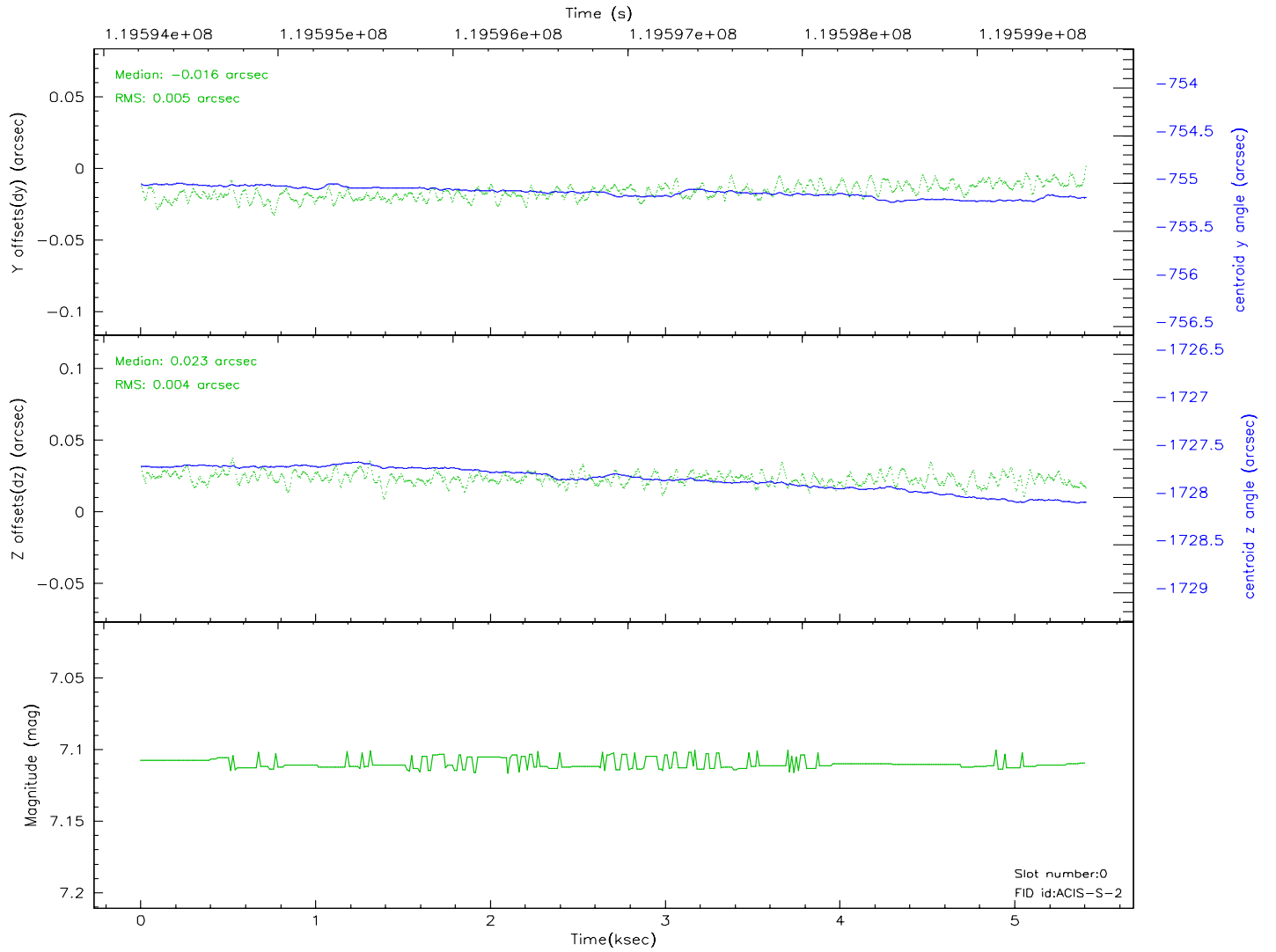
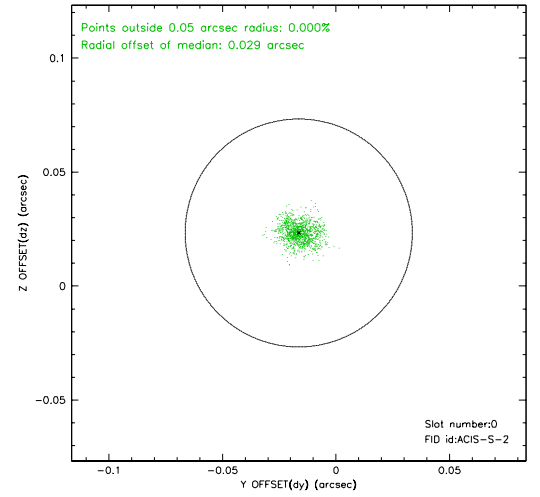
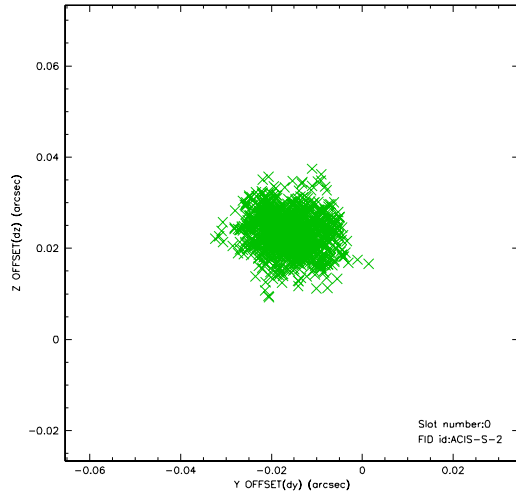


2.4.5 Slot 7

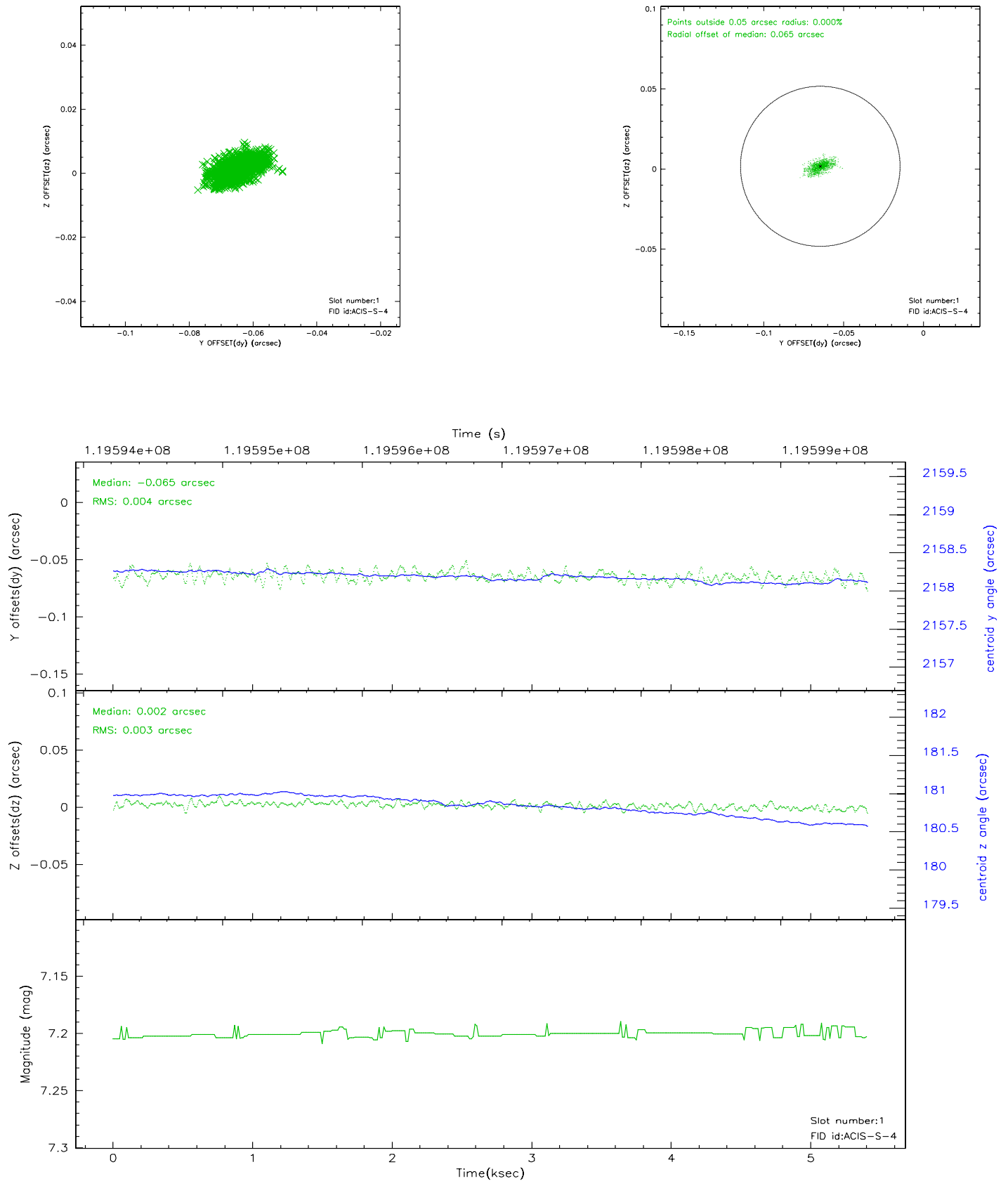


2.5 FID Slots

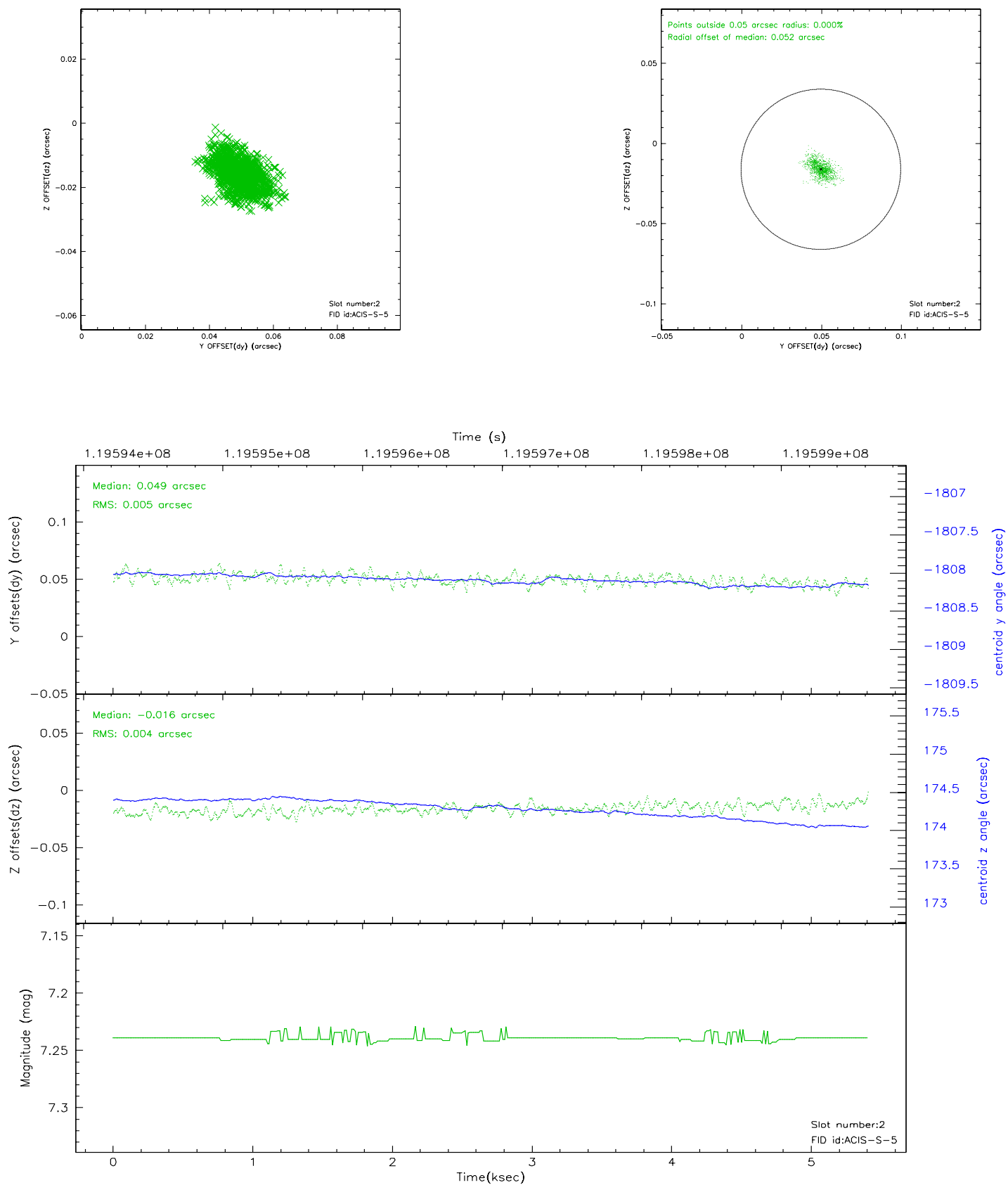
2.5.1 Slot 0



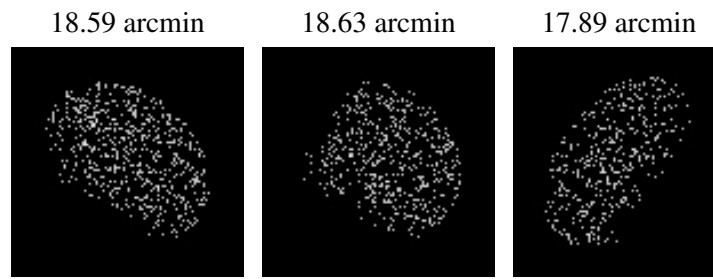
2.5.2 Slot 1



2.5.3 Slot 2



3 Point Sources



A Summary

A.1 Status

V&V Scientist	Beth Sundheim
V&V Date (YYYY-MM-DD)	2007.01.10
V&V Edition	1
V&V Disposition and Status	OK
V&V Charge Time	4.95

A.2 Comments