

V&V Reference Report

L2 ASCDS Version : 8.4.5

Observation 1675 - L2 Version 3
Chandra X-Ray Center

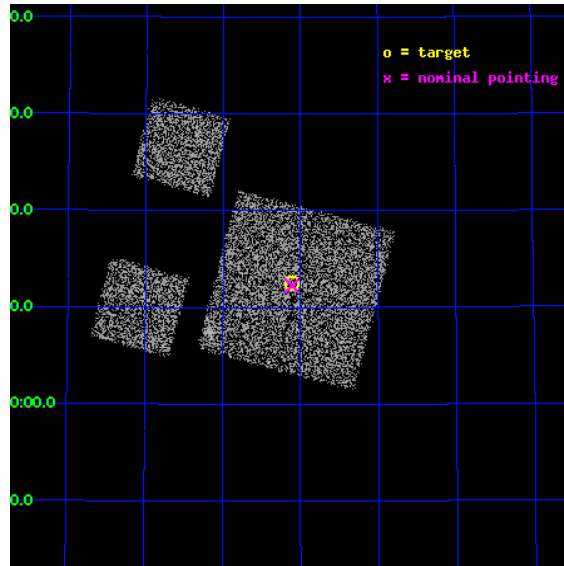
L2 Processing Date : Sep 20 2012

Contents

1	Front	2
2	OBI	3
2.1	OBI	3
2.1.1	Images	3
2.1.2	Bias	3
2.1.3	Parameters	4
2.1.4	Events	4
2.2	Compared Parameters	5
2.3	Aspect	6
2.4	Star Slots	9
2.4.1	Slot 3	9
2.4.2	Slot 4	10
2.4.3	Slot 5	11
2.4.4	Slot 6	12
2.4.5	Slot 7	13
2.5	FID Slots	14
2.5.1	Slot 0	14
2.5.2	Slot 1	15
2.5.3	Slot 2	16
A	Summary	17
A.1	Status	17
A.2	Comments	17

1 Front

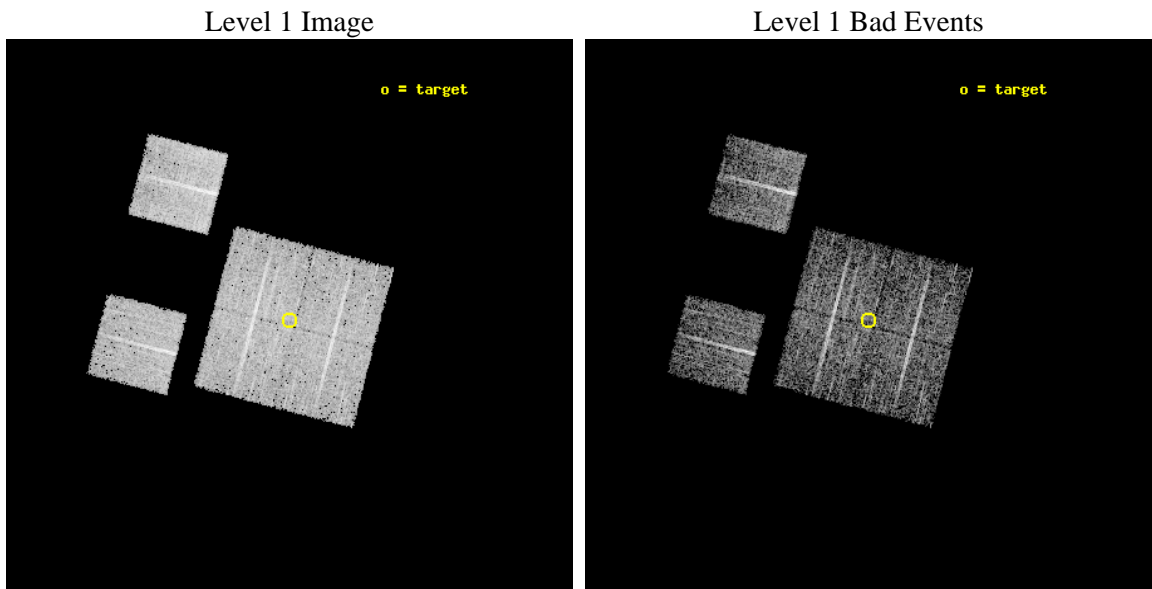
seq_num	900034	Sequence number
obs_id	1675	Observation id
title	LOCKMAN HOLE SHALLOW SURVEY	Proposal title
observer	Dr. Stephen Murray	Principal investigator
object	LOCKMAN HOLE #4	Source name
dtcycle	0	
cycle	P	events from which exps? Prim/Second/Both
ra_targ	162.279167	Observer's specified target RA [deg]
dec_targ	57.208889	Observer's specified target Dec [deg]
ra_nom	162.27802892012	Nominal RA [deg]
dec_nom	57.204178992835	Nominal Dec [deg]
roll_nom	284.62009411057	Nominal Roll [deg]
revision	3	Processing version of data
ontime	4758.4000044167	Sum of GTIs [s]
livetime	4698.1462783963	Livetime [s]
ontime0	4758.4000044167	Sum of GTIs [s]
ontime1	4758.4000044167	Sum of GTIs [s]
ontime2	4758.4000044167	Sum of GTIs [s]
ontime3	4758.4000044167	Sum of GTIs [s]
ontime6	4758.4000044167	Sum of GTIs [s]
ontime8	4758.4000044167	Sum of GTIs [s]
l2events	18051	Number of level 2 events



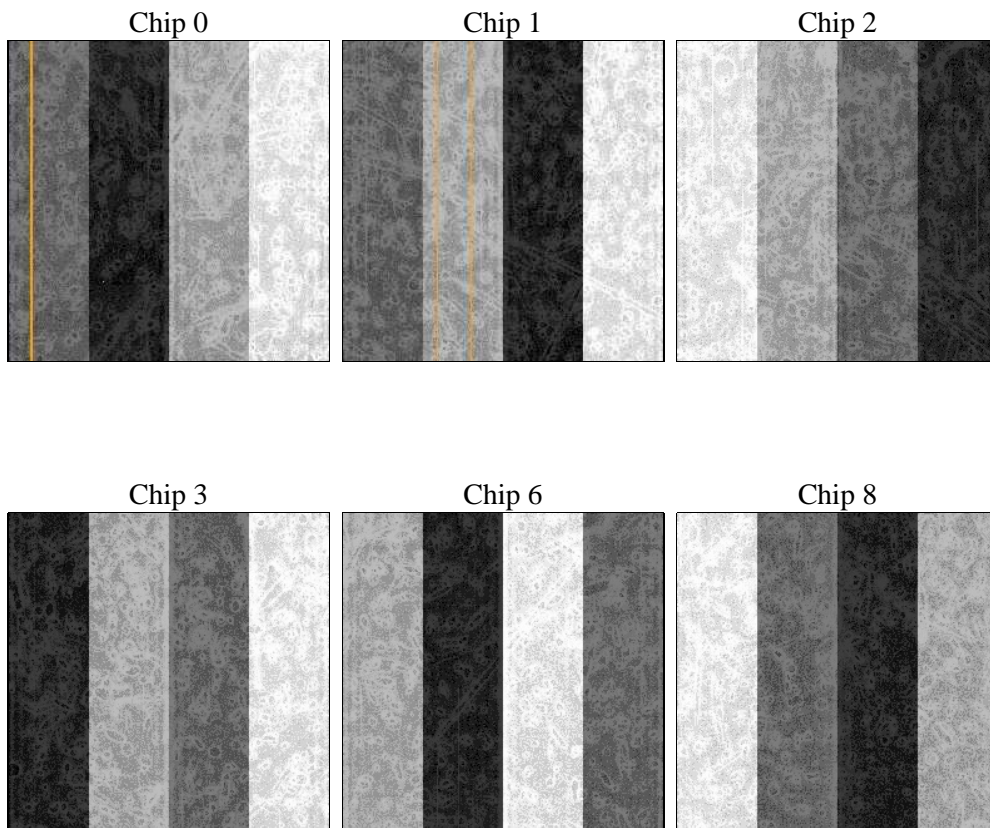
2 OBI

2.1 OBI

2.1.1 Images



2.1.2 Bias



2.1.3 Parameters

obi_num	0	Obi number	sched_exp_time	5000.000000	[s] Scheduled observation exposure time
ascdsver	8.4.5	Processing system revision	ontime	4758.4000044167	Sum of GTIs [s]
caldsver	4.5.1.1	 	ontime0	4758.4000044167	Sum of GTIs [s]
date	2012-09-20T12:40:11	Date and time of file creation	ontime1	4758.4000044167	Sum of GTIs [s]
revision	3	Processing version of data	ontime2	4758.4000044167	Sum of GTIs [s]
			ontime3	4758.4000044167	Sum of GTIs [s]
			ontime6	4758.4000044167	Sum of GTIs [s]
			ontime8	4758.4000044167	Sum of GTIs [s]
			l1events	188280	Number of level 1 events

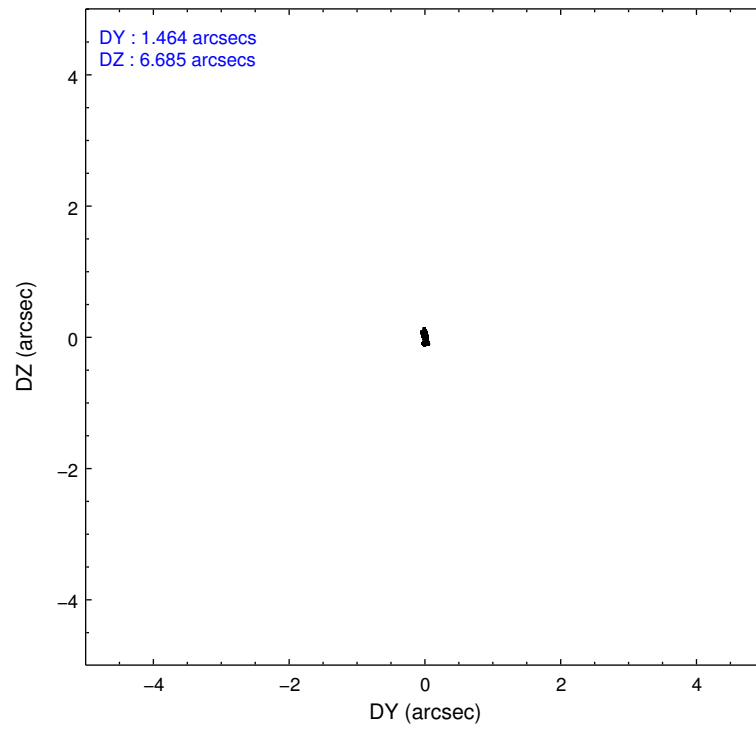
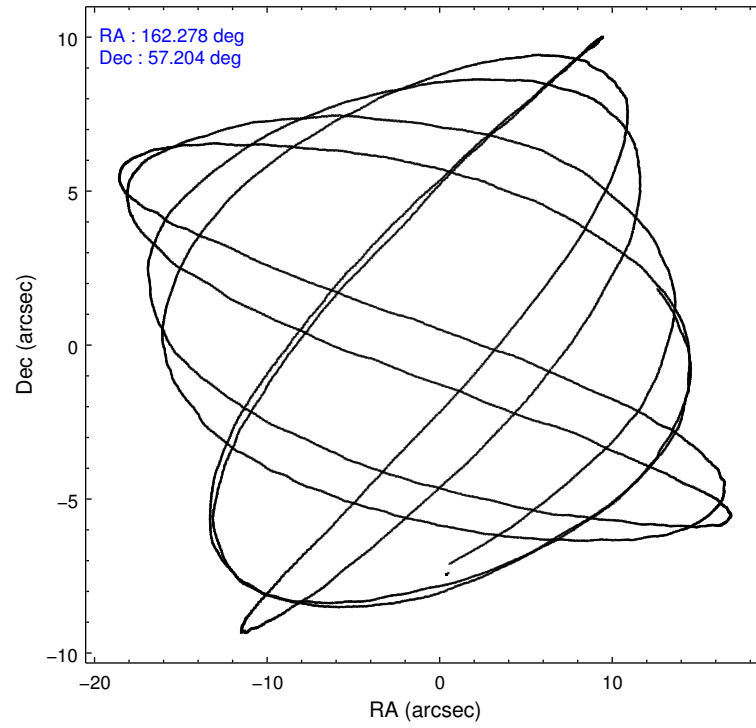
2.1.4 Events

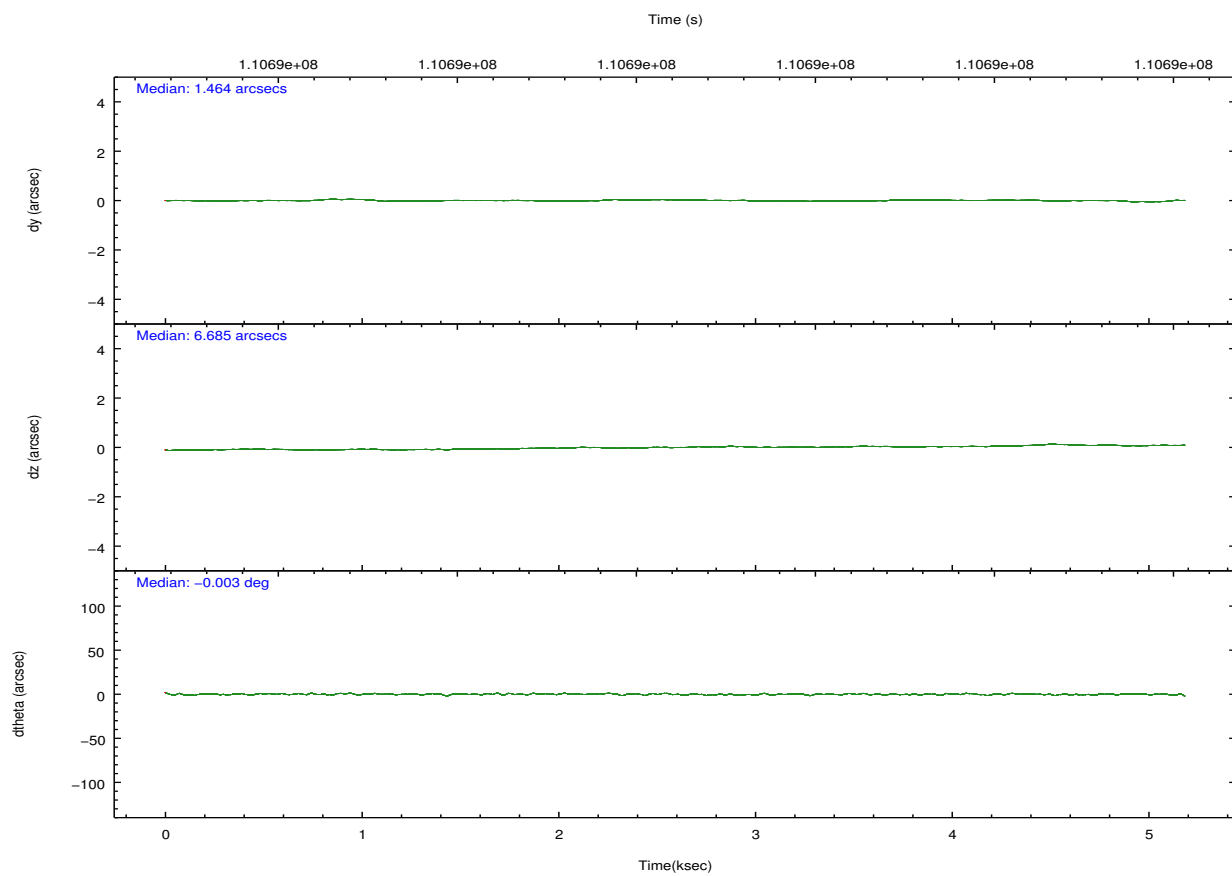
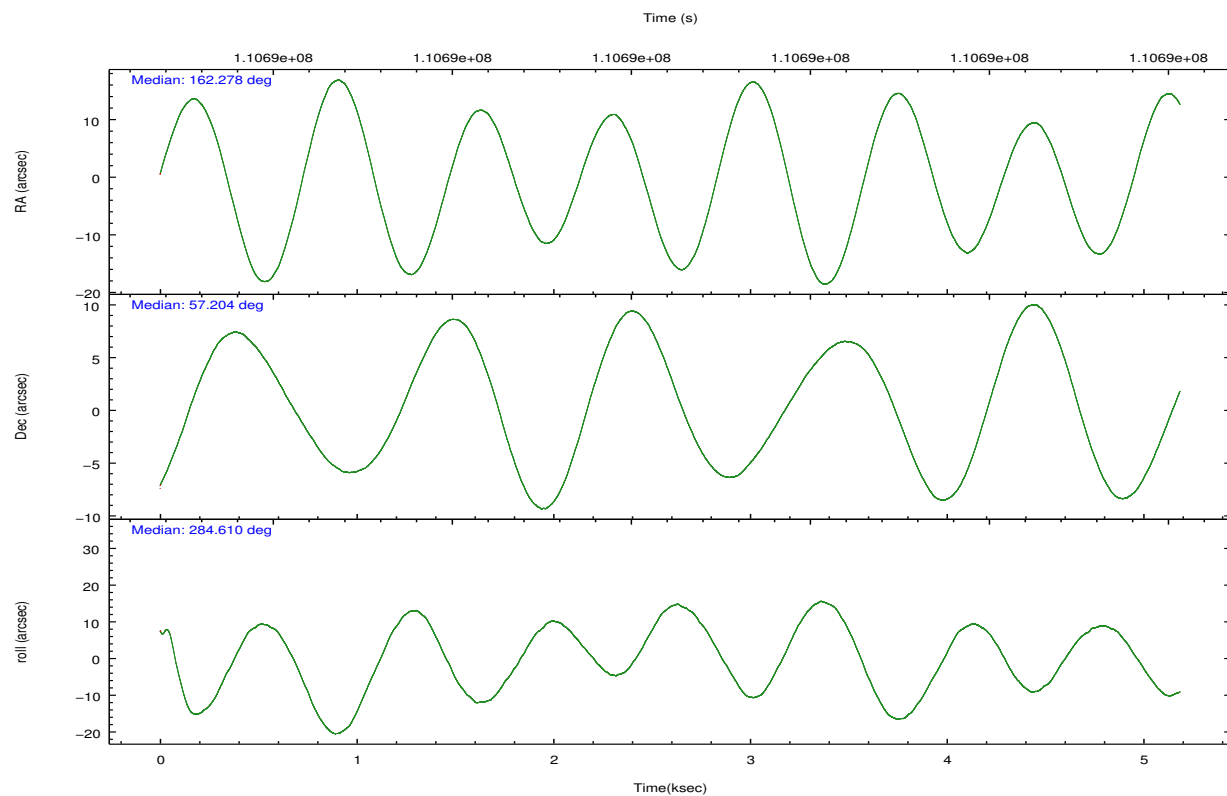
	ccd 0	ccd 1	ccd 2	ccd 3	ccd 6	ccd 8		ccd 0	ccd 1	ccd 2	ccd 3	ccd 6	ccd 8
level 1 events	28370	28222	30527	30567	30596	39998	grade 0 events	1490	1470	1679	1427	1266	2308
rejected events	24876	24586	26799	27209	27278	32787		5%	5%	5%	4%	4%	5%
rejected %	87%	87%	87%	89%	89%	81%	grade 1 events	14	11	15	21	6	27
								0%	0%	0%	0%	0%	0%
							grade 2 events	725	702	782	705	700	1501
								2%	2%	2%	2%	2%	3%
							grade 3 events	331	370	344	308	352	800
								1%	1%	1%	1%	1%	2%
							grade 4 events	308	381	329	323	333	743
								1%	1%	1%	1%	1%	1%
							grade 5 events	1090	1161	1038	1123	1280	1714
								3%	4%	3%	3%	4%	4%
							grade 6 events	644	718	598	599	672	1862
								2%	2%	1%	1%	2%	4%
							grade 7 events	23768	23409	25742	26061	25987	31043
								83%	82%	84%	85%	84%	77%

2.2 Compared Parameters

Parameter	Planned	Actual	Parameter	Planned	Actual
Instrument	ACIS	ACIS	Obspar format version number	7	7
Detector	ACIS-012368	ACIS-012368	Obspar file type	PREDICTED	ACTUAL
Grating	NONE	NONE	Obspar update status	NONE	UPDATED
Data mode	FAINT	FAINT	Number of optional ACIS chips dropped	0	0
Observation mode	POINTING	POINTING	On-chip summing requested	N	N
[deg] Pointing RA	162.242242	162.2780289201157	Subarray requested	NONE	NONE
[deg] Pointing Dec	57.223709	57.20417899283535	Alternating exposures requested	N	N
[deg] Pointing Roll	284.441515	284.6200941105703	[s] Primary exposure time	0.000000	3.2
[mm] SIM focus pos	-0.782348	-0.7809083437167272			
[mm] SIM defocus	0	0.001439871863259334			
[mm] SIM translation stage pos	-233.592463	-233.5874344608287			
[mm] SIM translation stage offset	0	-0.005018542100998502			
[s] Observation start time (MET)	110685806.184000	110685430.44545			
Observation start date	2001-07-05T02:02:22	2001-07-05T01:57:10			
[s] Observation end time (MET)	110690806.184000	110690943.40816			
Observation end date	2001-07-05T03:25:42	2001-07-05T03:29:03			
Read mode	TIMED	TIMED			

2.3 Aspect



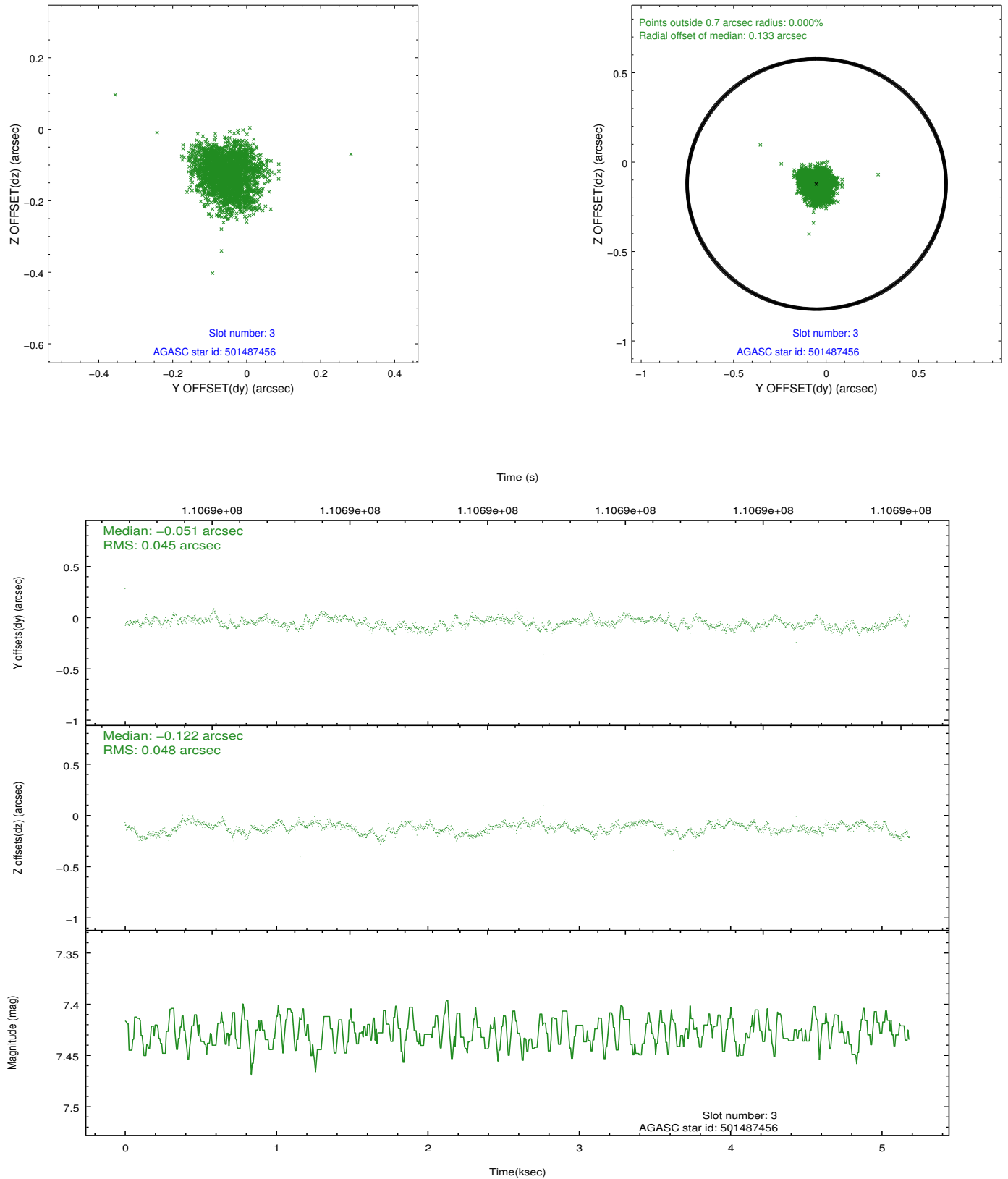


Slot Statistics

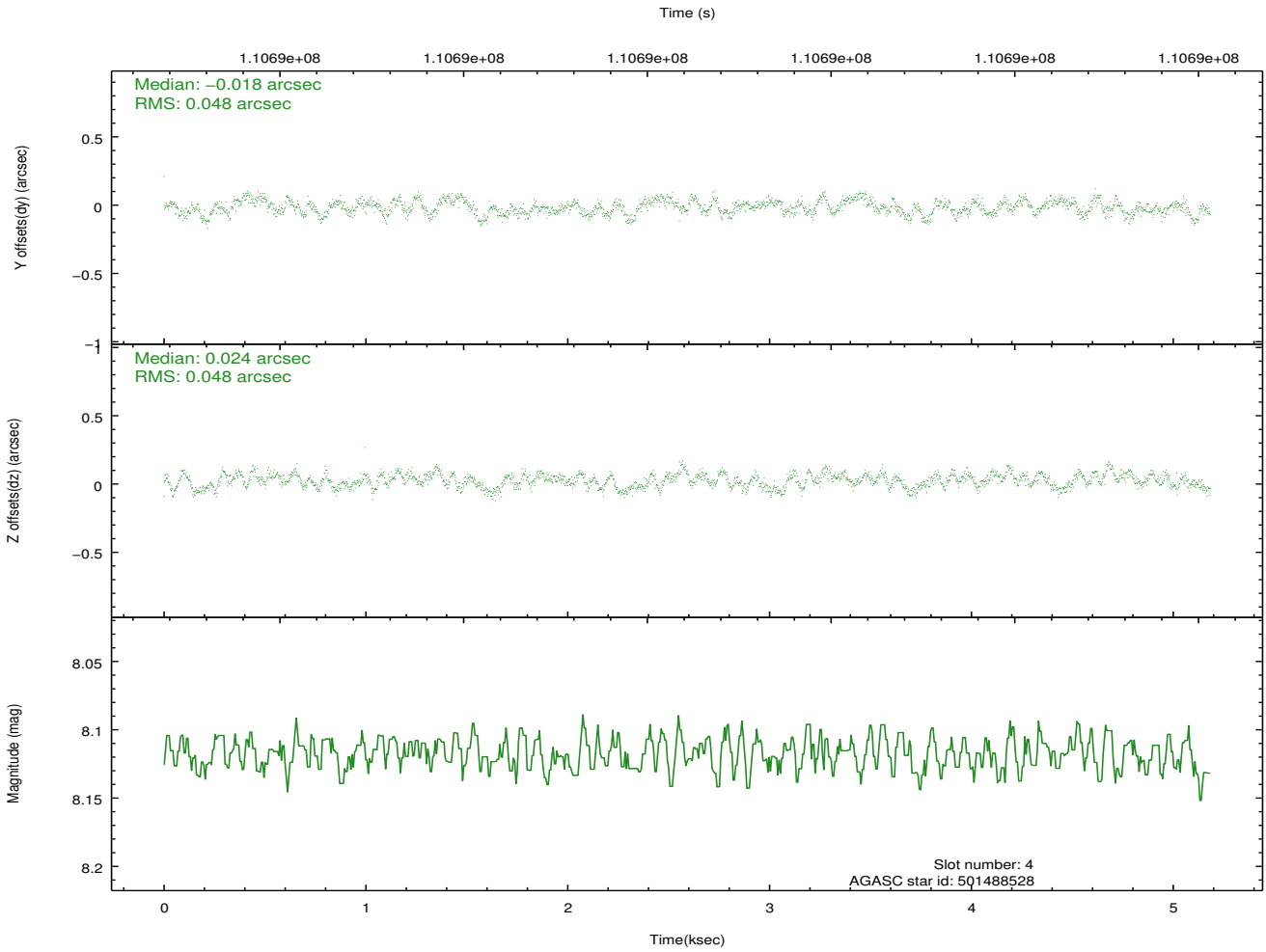
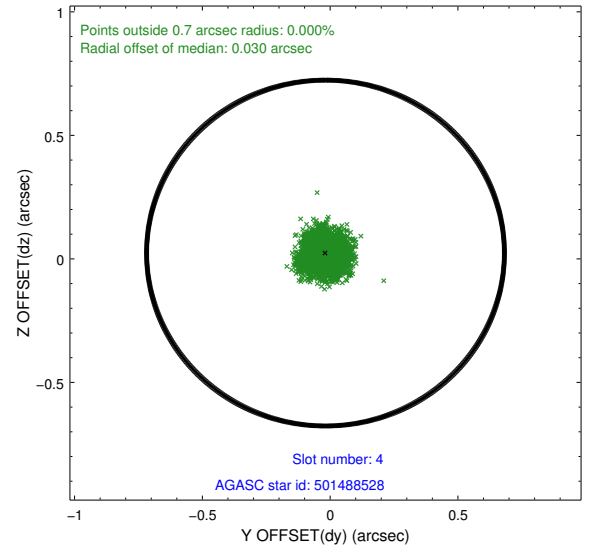
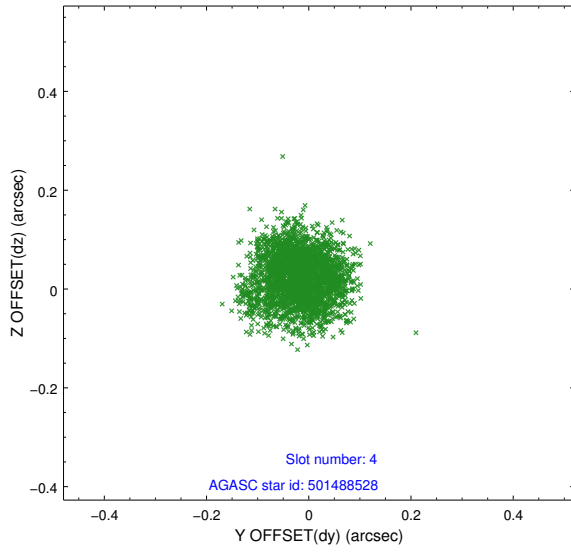
slot	status	id	mag	n_pts	med_dy	med_dz	dr1	dr2	ra	dec	mean_y	mean_z
0	FID	ACIS-I-2	7.15	1265	-0.035	-0.072	0.009	0.014	0.000000	0.000000	-755.83	-836.50
1	FID	ACIS-I-4	7.18	1264	-0.040	0.048	0.006	0.010	0.000000	0.000000	2157.68	1069.23
2	FID	ACIS-I-5	7.23	1264	-0.026	0.094	0.009	0.014	0.000000	0.000000	-1808.16	1068.42
3	GUIDE	501487456	7.43	2528	-0.051	-0.122	0.071	0.109	161.499463	56.920840	684.22	-1683.16
4	GUIDE	501488528	8.12	2529	-0.018	0.024	0.075	0.114	162.150935	57.312270	-353.03	-93.04
5	GUIDE	501487176	9.93	2528	-0.005	-0.024	0.179	0.267	161.359950	56.912355	642.15	-1955.76
6	GUIDE	501877264	9.32	2528	-0.170	-0.014	0.104	0.166	163.254394	57.702218	-1197.32	2317.72
7	GUIDE	501486512	9.61	2529	0.249	0.152	0.140	0.217	163.579075	56.729186	2356.66	2120.67

2.4 Star Slots

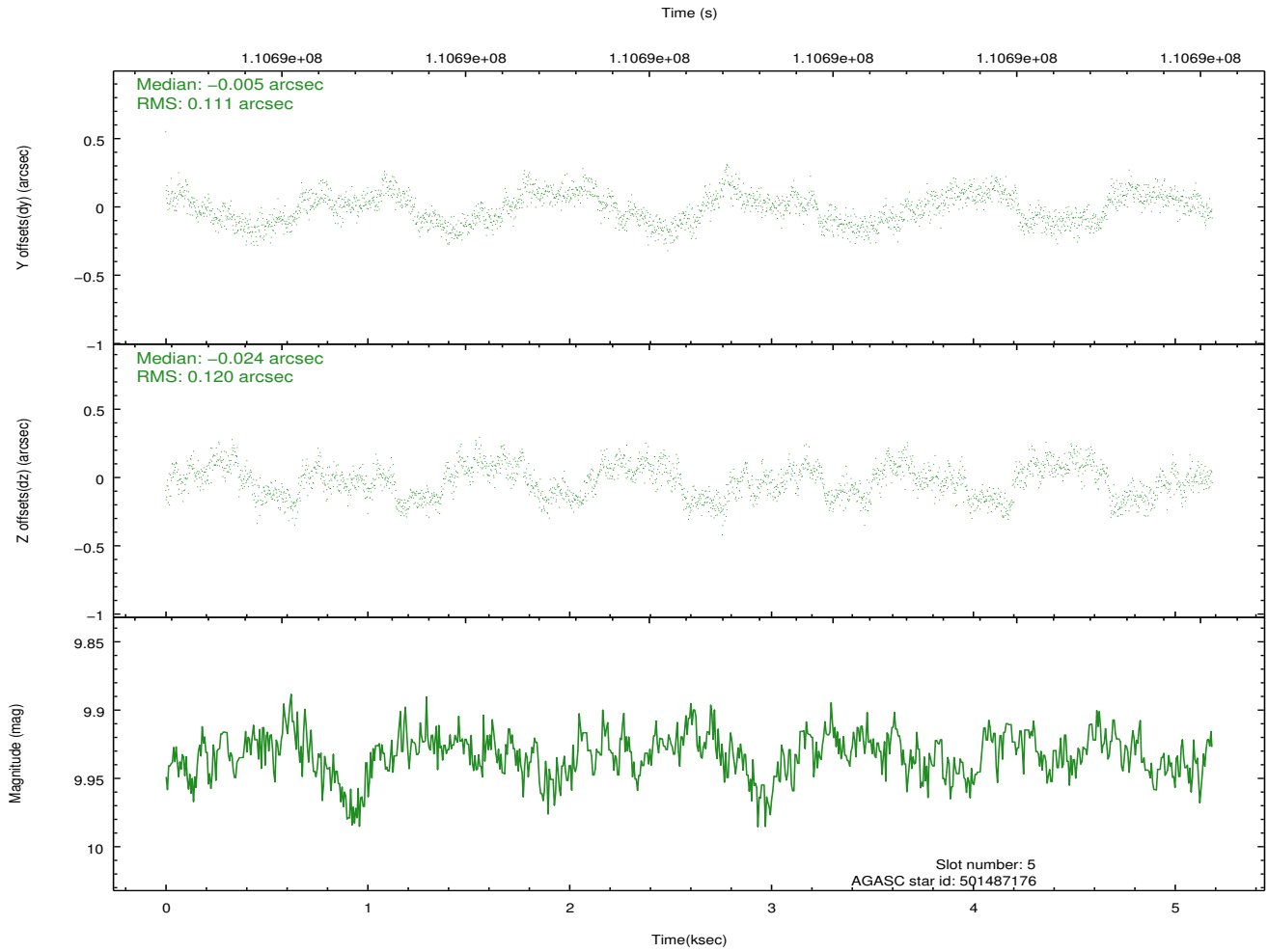
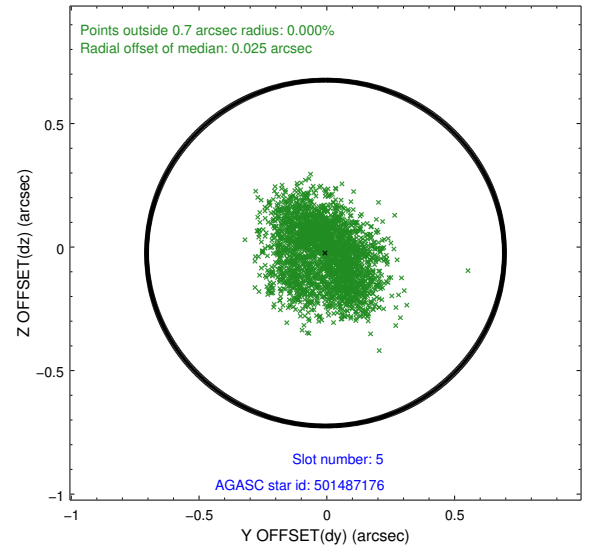
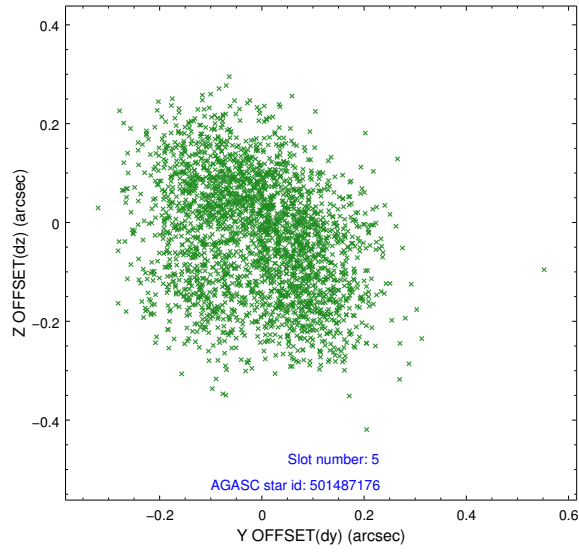
2.4.1 Slot 3



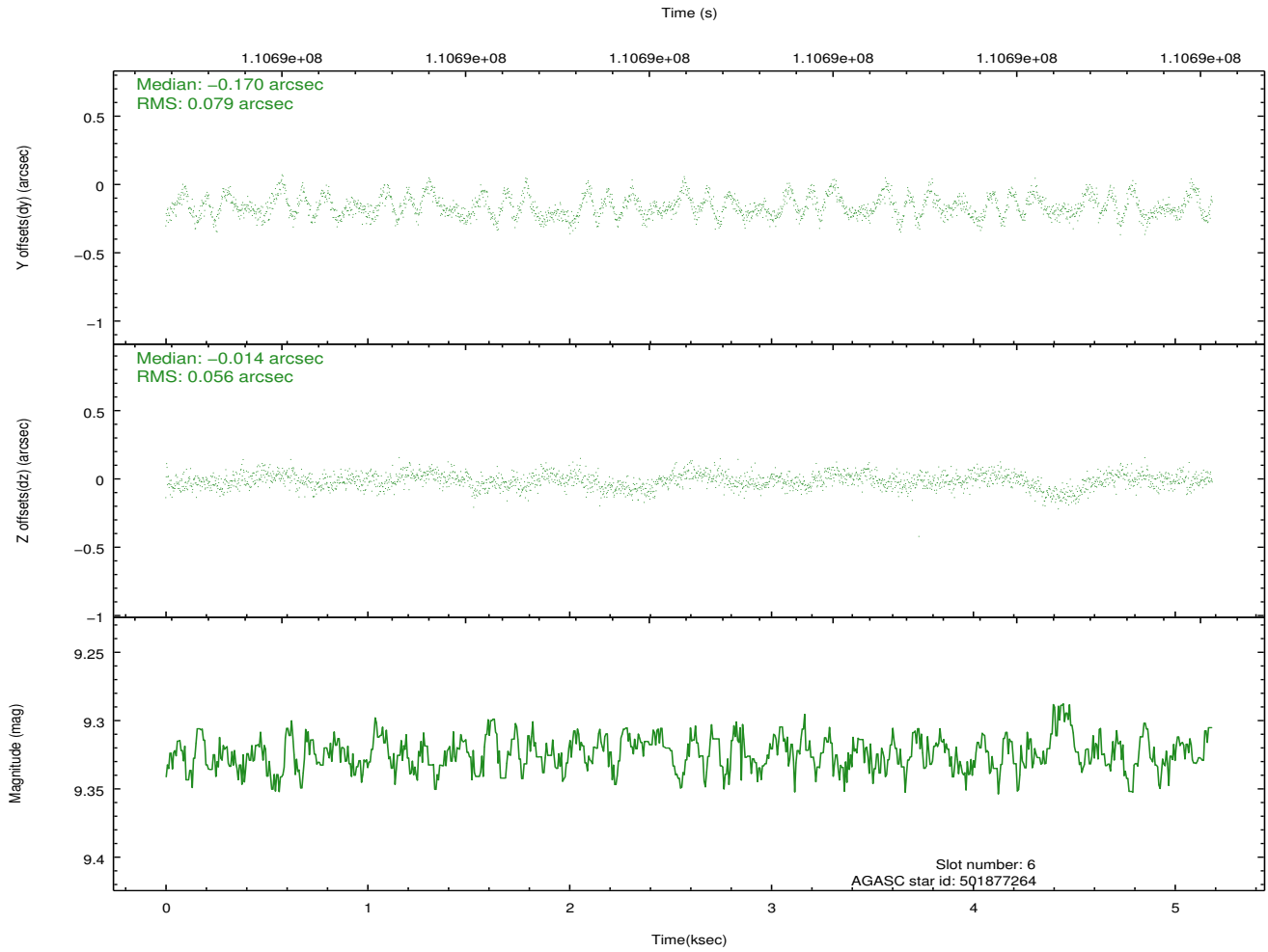
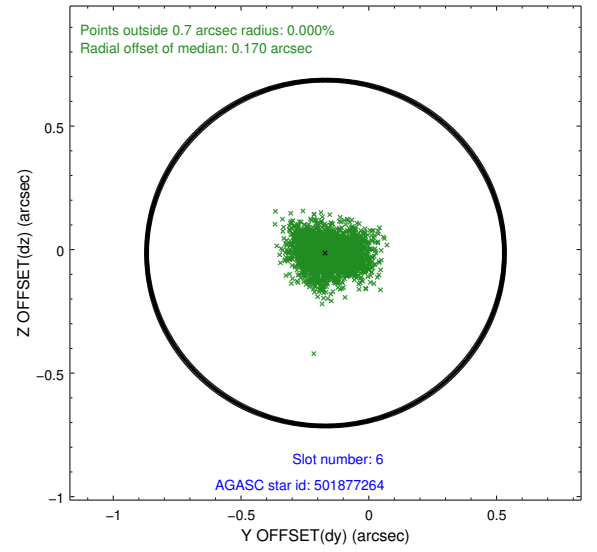
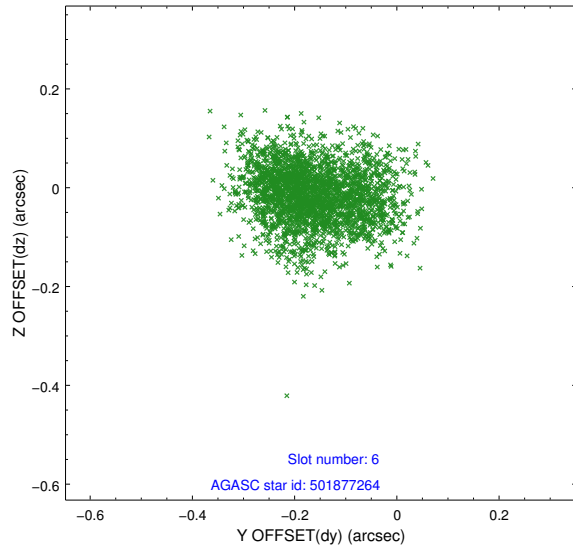
2.4.2 Slot 4



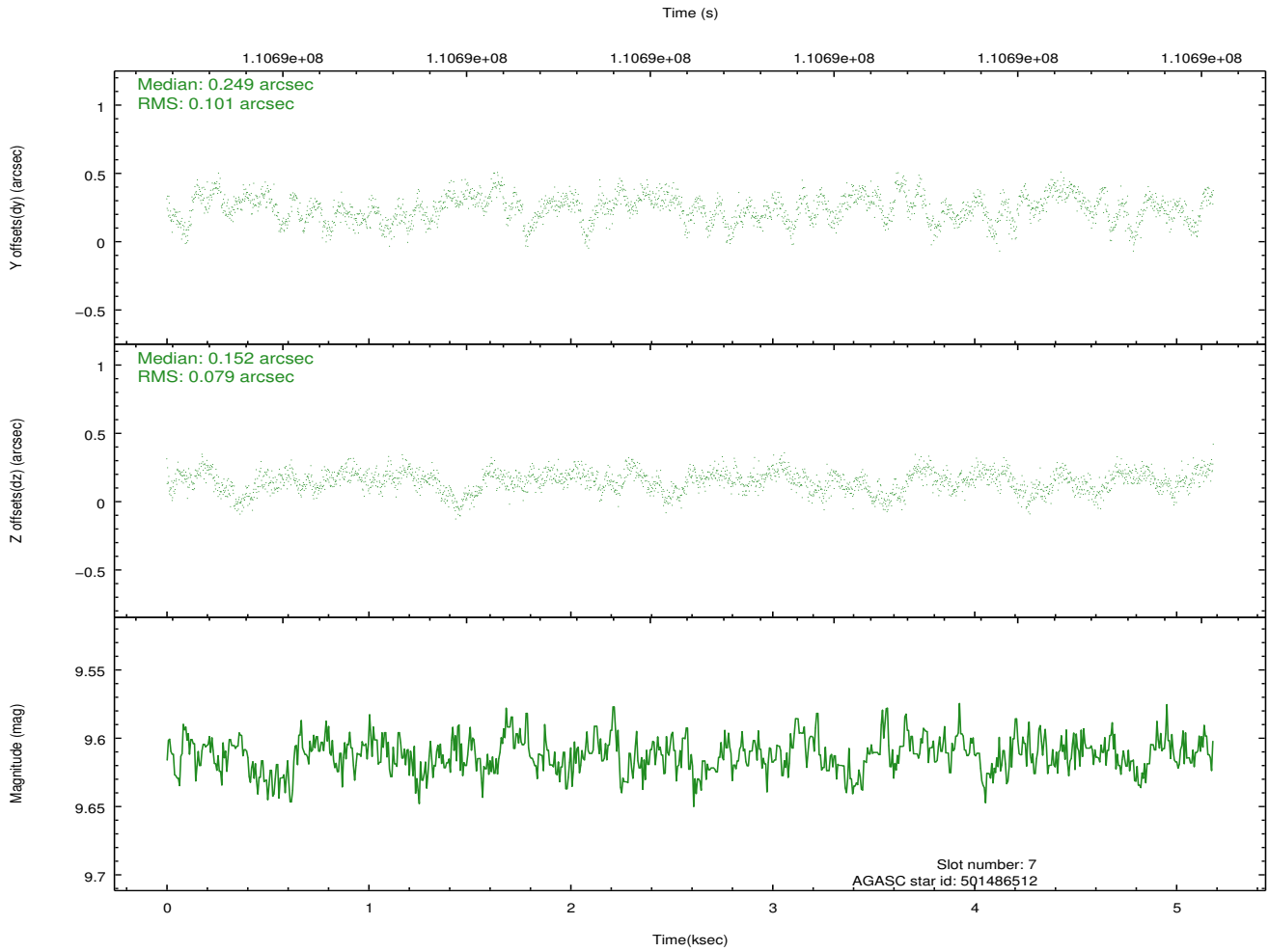
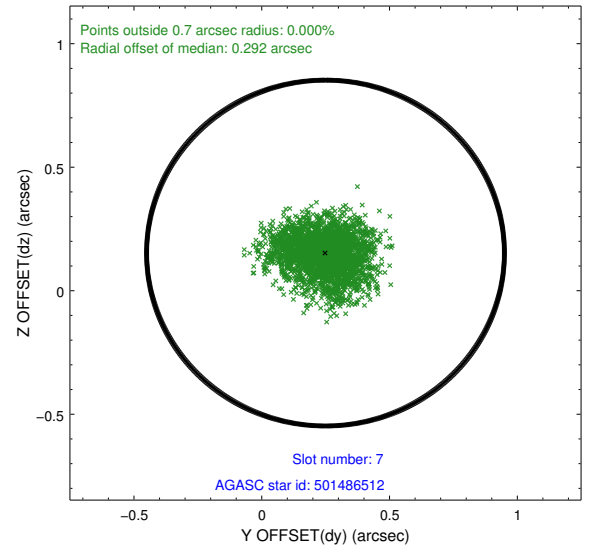
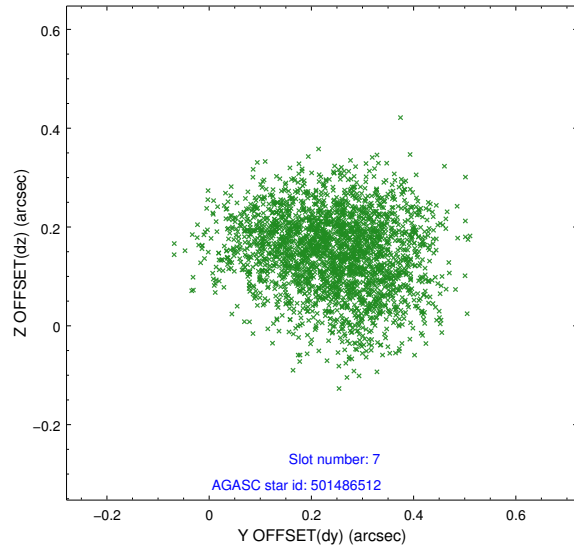
2.4.3 Slot 5



2.4.4 Slot 6

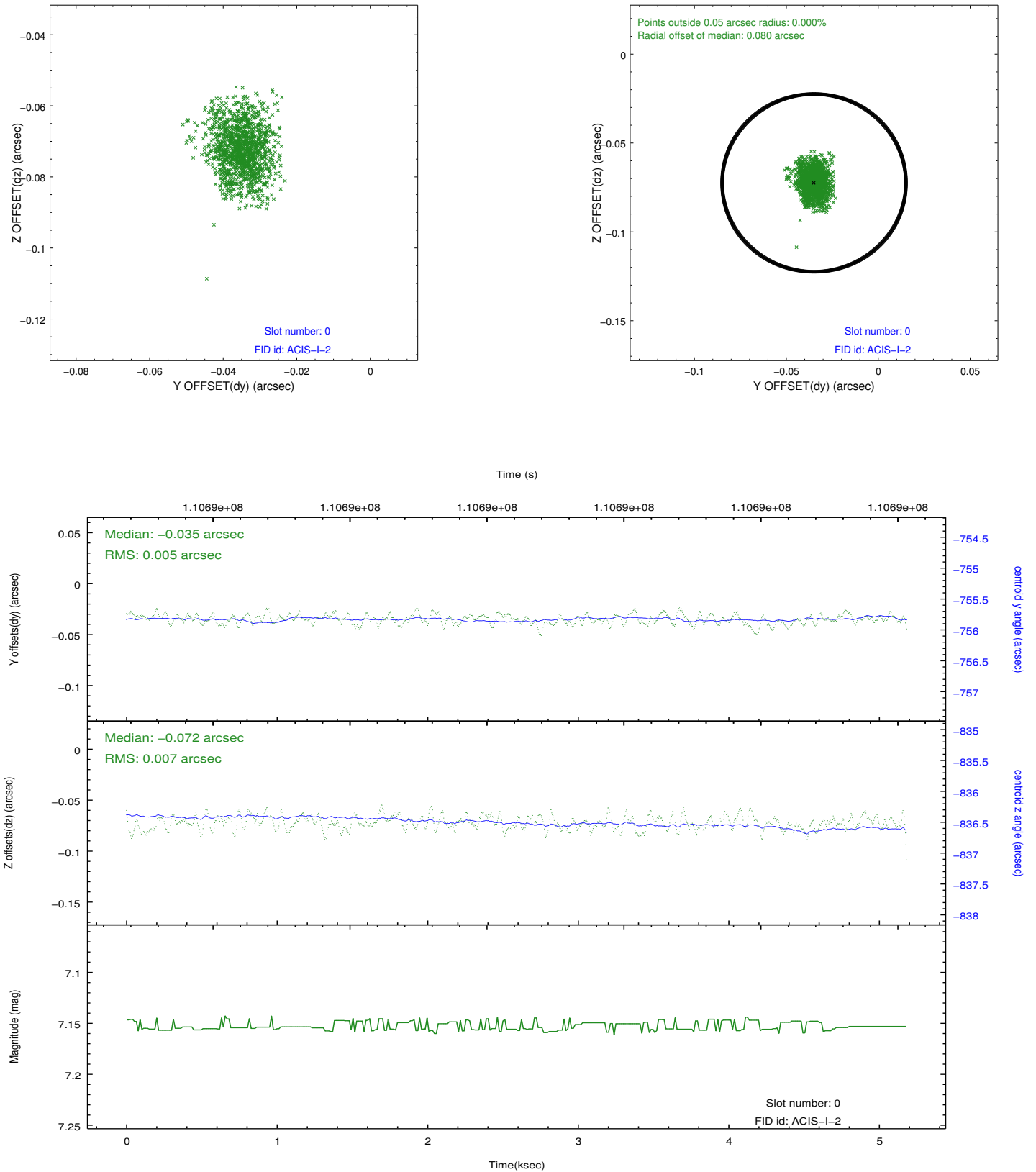


2.4.5 Slot 7

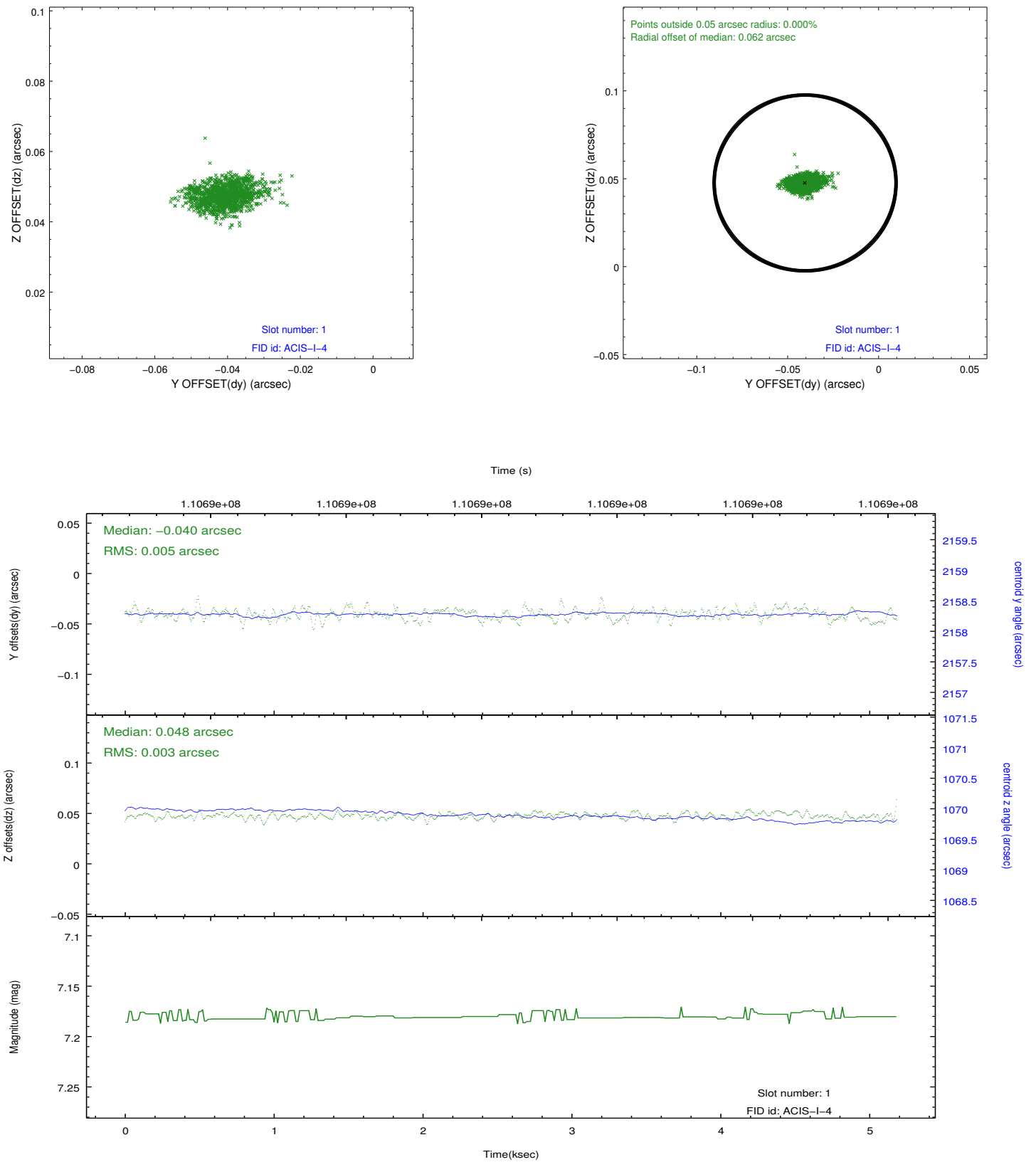


2.5 FID Slots

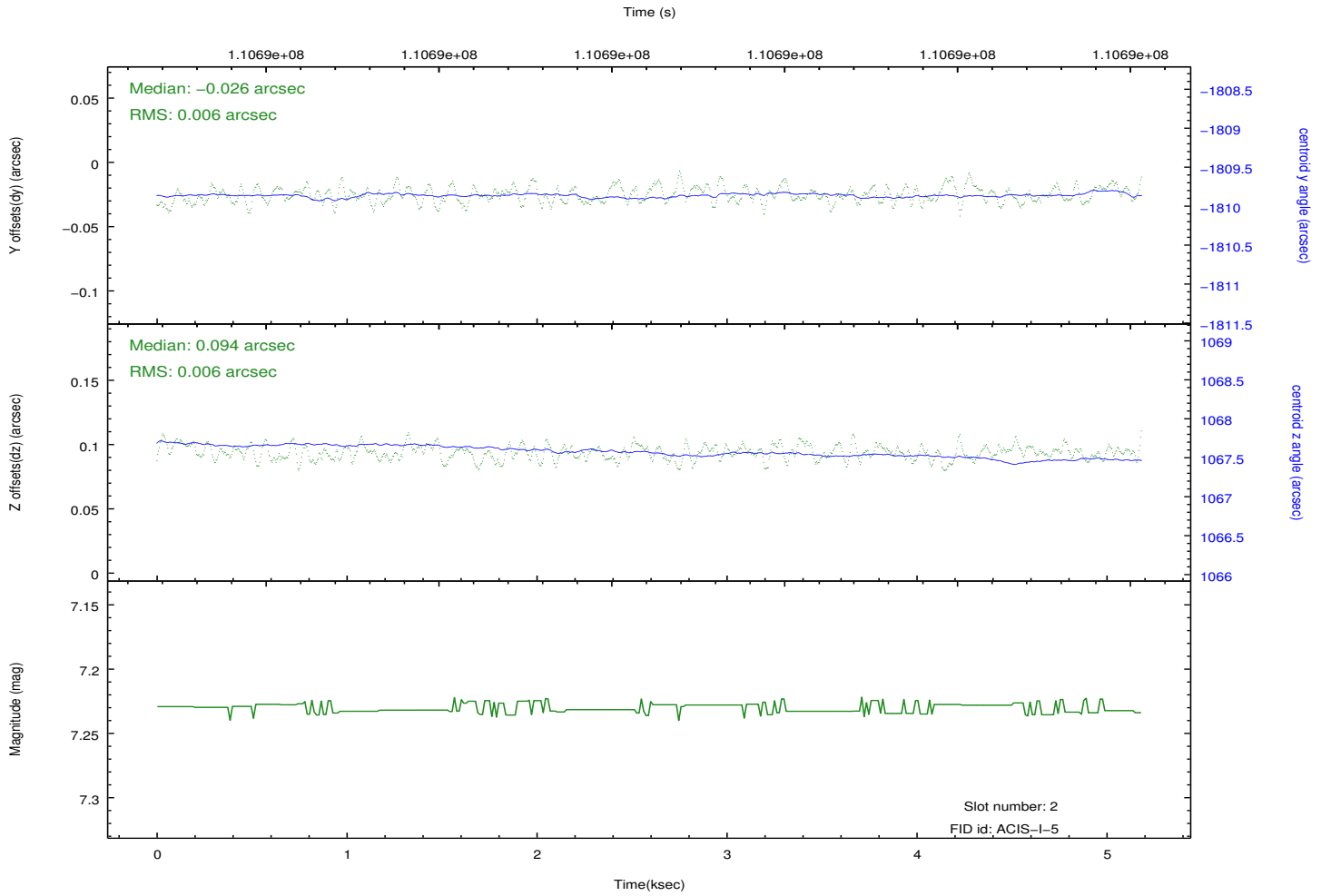
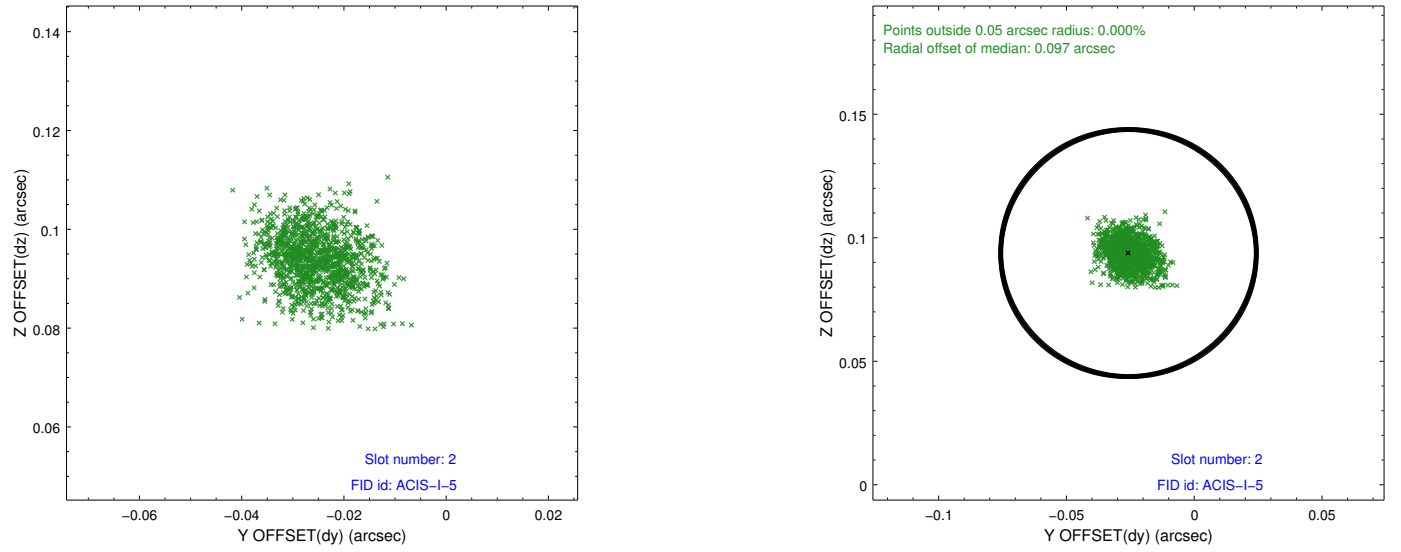
2.5.1 Slot 0



2.5.2 Slot 1



2.5.3 Slot 2



A Summary

A.1 Status

V&V Scientist	Beth Sundheim
V&V Date (YYYY-MM-DD)	2012.09.21
V&V Edition	1
V&V Disposition and Status	OK
V&V Charge Time	4.761

A.2 Comments