

V&V Reference Report

L2 ASCDS Version : 10.2.1

Observation 16465 - L2 Version 2
Chandra X-Ray Center

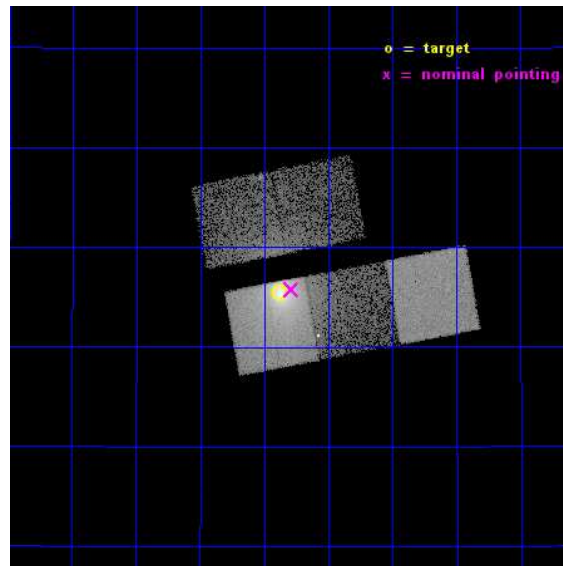
L2 Processing Date : Dec 11 2014

Contents

1	Front	2
2	OBI	3
2.1	OBI	3
2.1.1	Images	3
2.1.2	Bias	3
2.1.3	Parameters	4
2.1.4	Events	4
2.2	Compared Parameters	5
2.3	Aspect	6
2.4	Star Slots	9
2.4.1	Slot 3	9
2.4.2	Slot 4	10
2.4.3	Slot 5	11
2.4.4	Slot 6	12
2.4.5	Slot 7	13
2.5	FID Slots	14
2.5.1	Slot 0	14
2.5.2	Slot 1	15
2.5.3	Slot 2	16
A	Summary	17
A.1	Status	17
A.2	Comments	17

1 Front

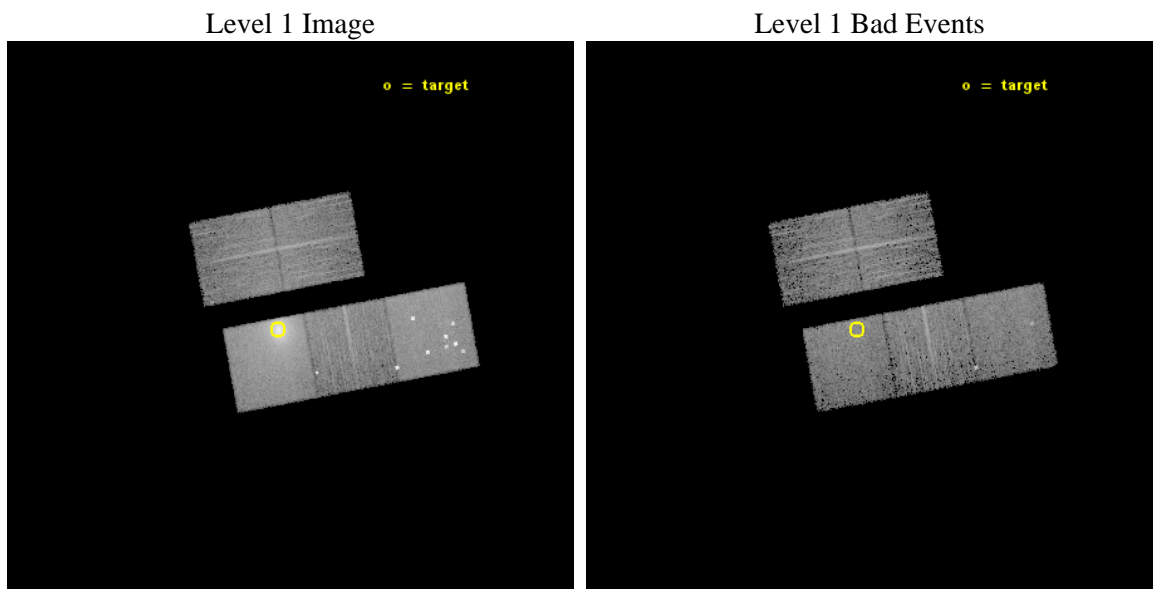
seq_num	890087	Sequence number
obs_id	16465	Observation id
title	AO-15 Calibration Observations of A1795	Proposal title
observer	Dr. CXC Calibration	Principal investigator
object	A1795	Source name
dtcycle	0	
cycle	P	events from which exps? Prim/Second/Both
ra_targ	207.219583	Observer's specified target RA [deg]
dec_targ	26.590833	Observer's specified target Dec [deg]
ra_nom	207.19710297143	Nominal RA [deg]
dec_nom	26.596238826177	Nominal Dec [deg]
roll_nom	169.44235124326	Nominal Roll [deg]
revision	2	Processing version of data
ontime	9773.0483692884	Sum of GTIs [s]
livetime	9645.3562975302	Livetime [s]
ontime2	9772.8842092752	Sum of GTIs [s]
ontime3	9772.9252492785	Sum of GTIs [s]
ontime5	9773.0073292851	Sum of GTIs [s]
ontime6	9769.8252190351	Sum of GTIs [s]
ontime7	9773.0483692884	Sum of GTIs [s]
l2events	142656	Number of level 2 events



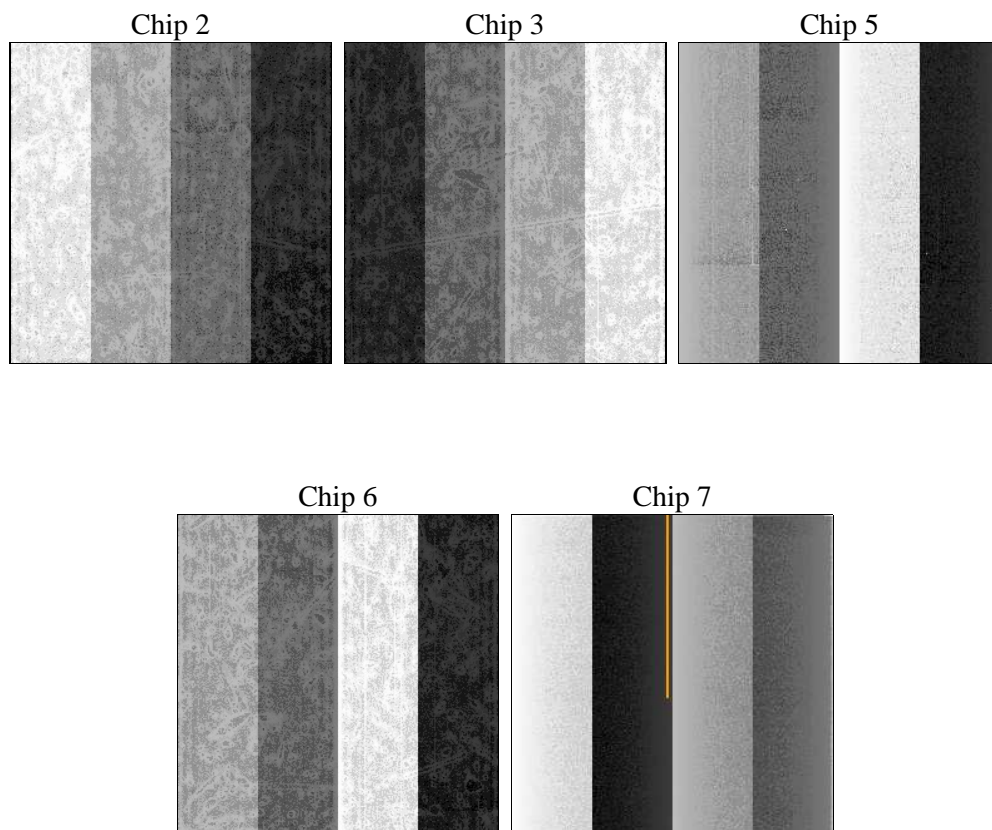
2 OBI

2.1 OBI

2.1.1 Images



2.1.2 Bias



2.1.3 Parameters

obi_num	1	Obi number	sched_exp_time	10000.000000	[s] Scheduled observation exposure time
ascdsver	10.3.1	Processing system revision	ontime	9773.0483692884	Sum of GTIs [s]
caldsver	4.6.4	 	ontime2	9772.8842092752	Sum of GTIs [s]
date	2014-12-11T06:02:01	Date and time of file creation	ontime3	9772.9252492785	Sum of GTIs [s]
revision	2	Processing version of data	ontime5	9773.0073292851	Sum of GTIs [s]
			ontime6	9769.8252190351	Sum of GTIs [s]
			ontime7	9773.0483692884	Sum of GTIs [s]
			l1events	364203	Number of level 1 events

2.1.4 Events

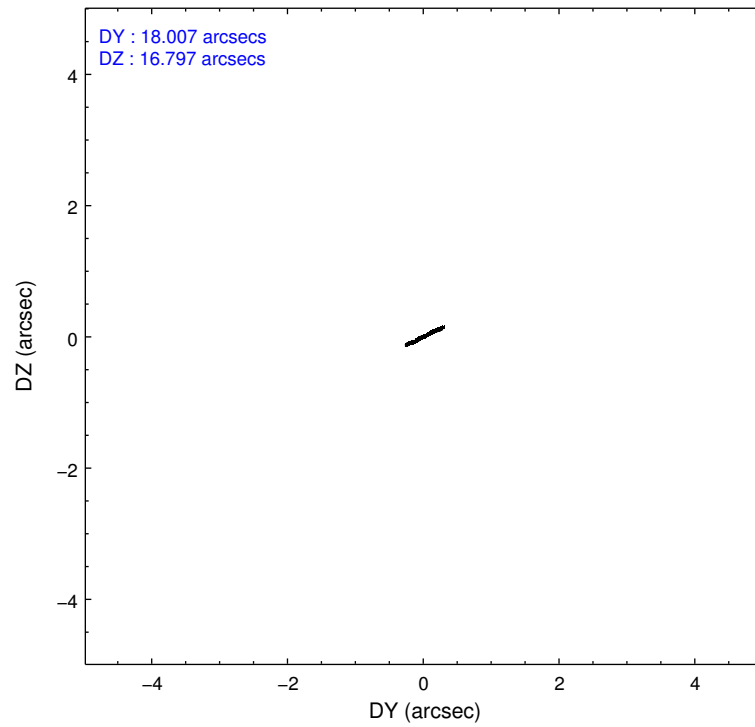
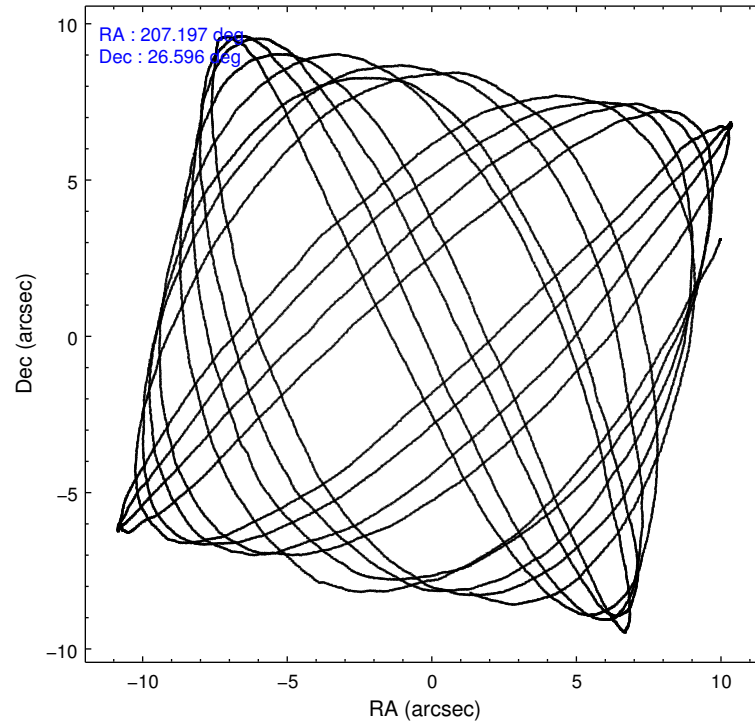
	ccd 2	ccd 3	ccd 5	ccd 6	ccd 7
level 1 events	46853	45202	95323	52661	124164
rejected events	39851	36695	41380	42339	37736
rejected %	85%	81%	43%	80%	30%

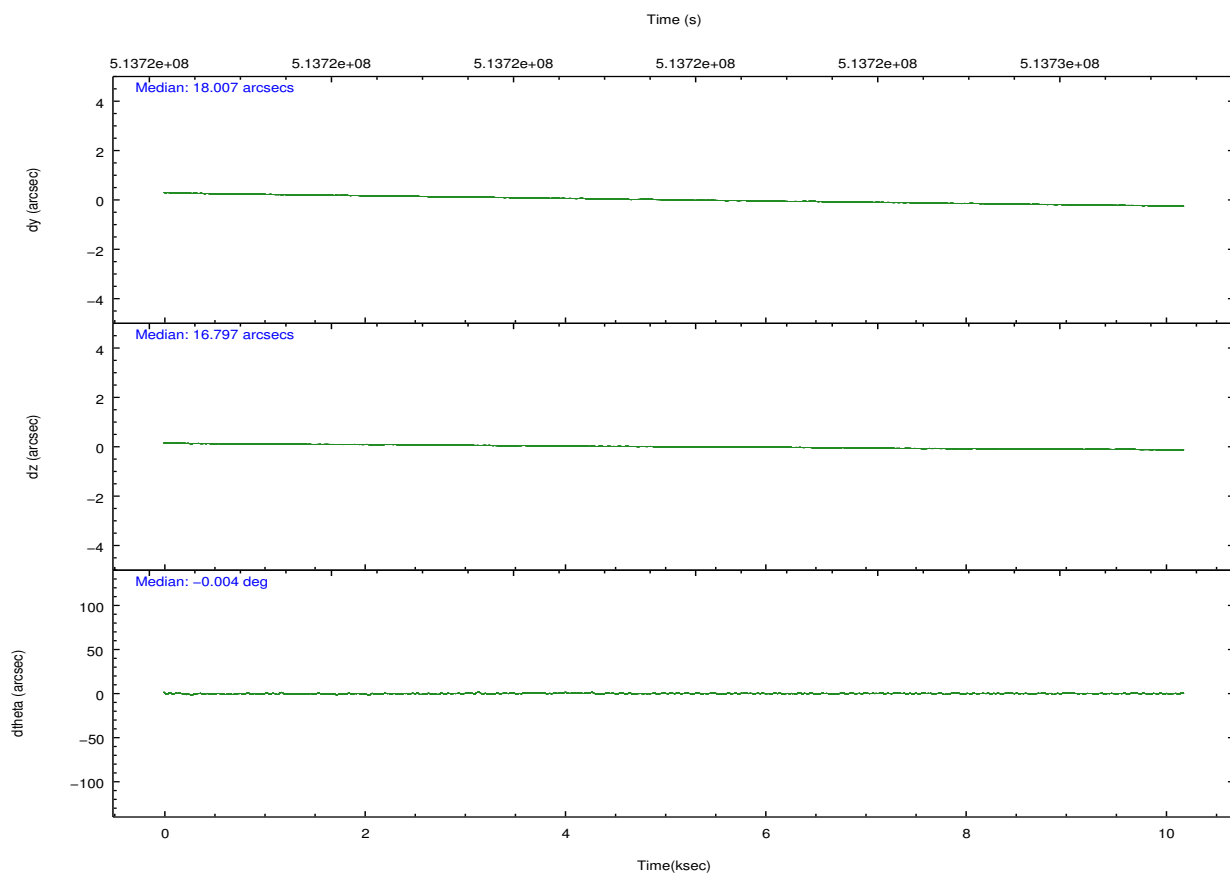
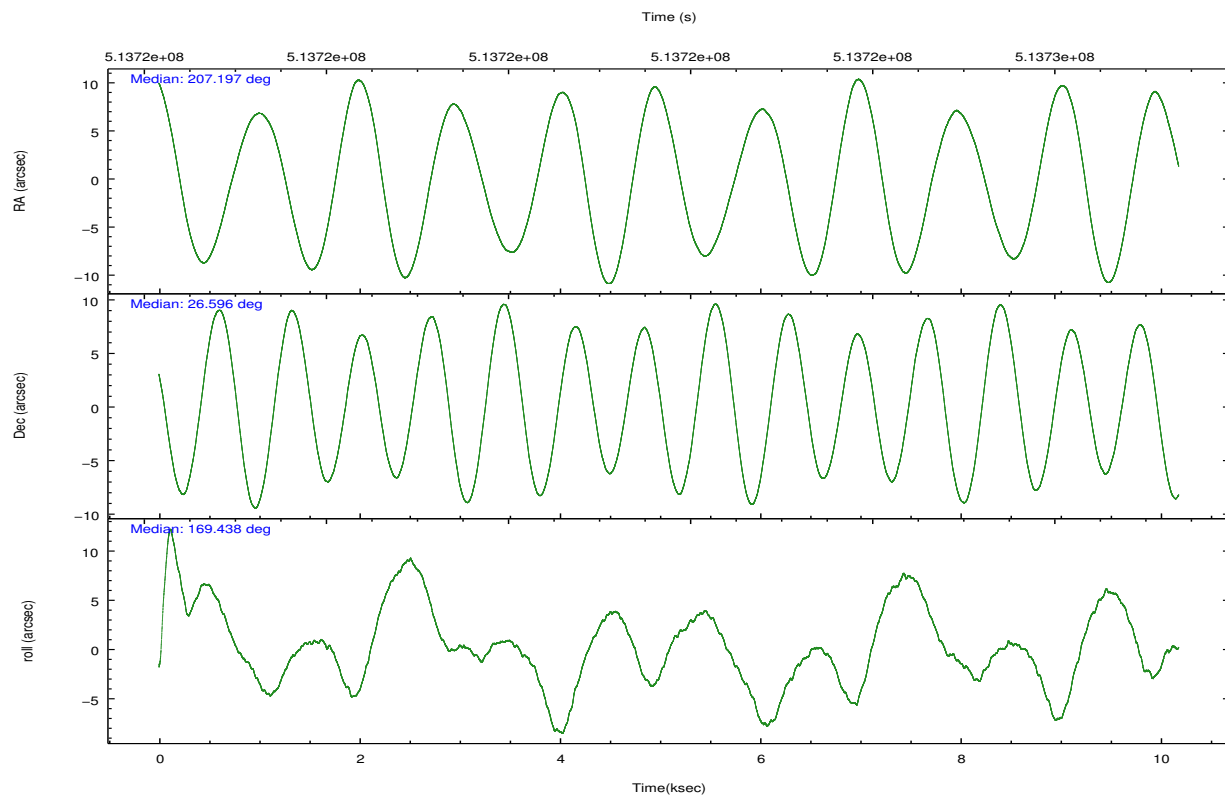
	ccd 2	ccd 3	ccd 5	ccd 6	ccd 7
grade 0 events	3385	4520	14672	5724	18584
	7%	9%	15%	10%	14%
grade 1 events	38	34	436	42	100
	0%	0%	0%	0%	0%
grade 2 events	1368	1425	14538	1807	21406
	2%	3%	15%	3%	17%
grade 3 events	571	699	1265	667	8605
	1%	1%	1%	1%	6%
grade 4 events	564	687	1032	634	8519
	1%	1%	1%	1%	6%
grade 5 events	1904	2295	5813	2350	6453
	4%	5%	6%	4%	5%
grade 6 events	1115	1181	22471	1501	29368
	2%	2%	23%	2%	23%
grade 7 events	37908	34361	35096	39936	31129
	80%	76%	36%	75%	25%

2.2 Compared Parameters

Parameter	Planned	Actual	Parameter	Planned	Actual
Instrument	ACIS	ACIS	Obspar format version number	7	7
Detector	ACIS-23567	ACIS-23567	Obspar file type	PREDICTED	ACTUAL
Grating	NONE	NONE	Obspar update status	NONE	UPDATED
Data mode	VFAINT	VFAINT	Number of optional ACIS chips dropped	0	0
Observation mode	POINTING	POINTING	On-chip summing requested	N	N
[deg] Pointing RA	207.225778	207.1971029714282	Subarray requested	NONE	NONE
[deg] Pointing Dec	26.605732	26.59623882617731	Alternating exposures requested	N	N
[deg] Pointing Roll	169.272878	169.4423512432575	[s] Primary exposure time	0.000000	3.1
[s] Window start time (MET)	512697667.184000	512697667.184000			
[s] Window stop time (MET)	515203267.184000	515203267.184000			
[mm] SIM focus pos	-0.684267	-0.6828225247311905			
[mm] SIM defocus	0	0.001444936568705701			
[mm] SIM translation stage pos	-199.932523	-199.9358384647497			
[mm] SIM translation stage offset	9.800000000000001	9.803315881741838			
[s] Observation start time (MET)	513716843.184000	513716467.31568			
Observation start date	2014-04-12T19:06:16	2014-04-12T19:01:07			
[s] Observation end time (MET)	513726843.184000	513727837.1288			
Observation end date	2014-04-12T21:52:56	2014-04-12T22:10:37			
Read mode	TIMED	TIMED			

2.3 Aspect



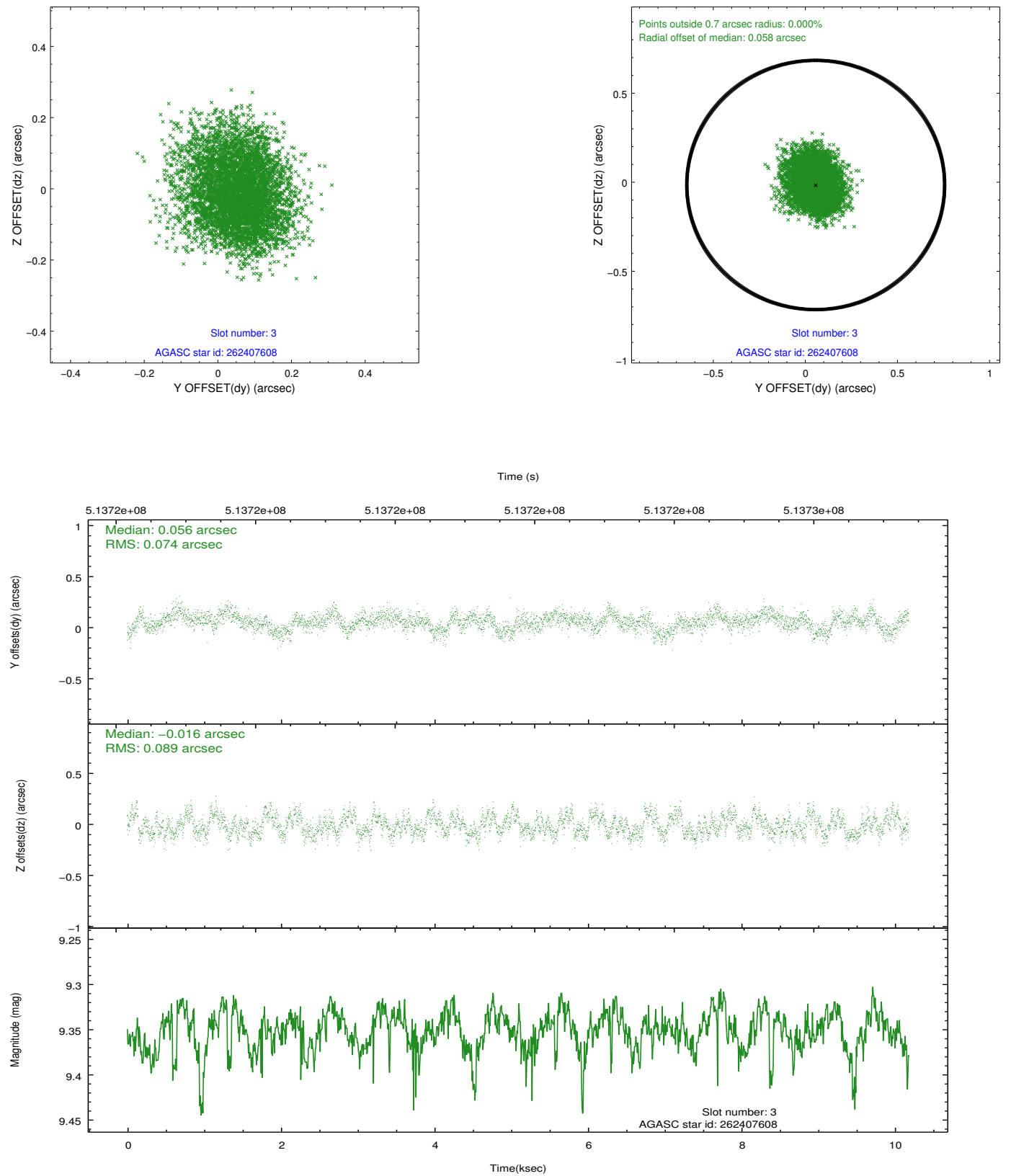


Slot Statistics

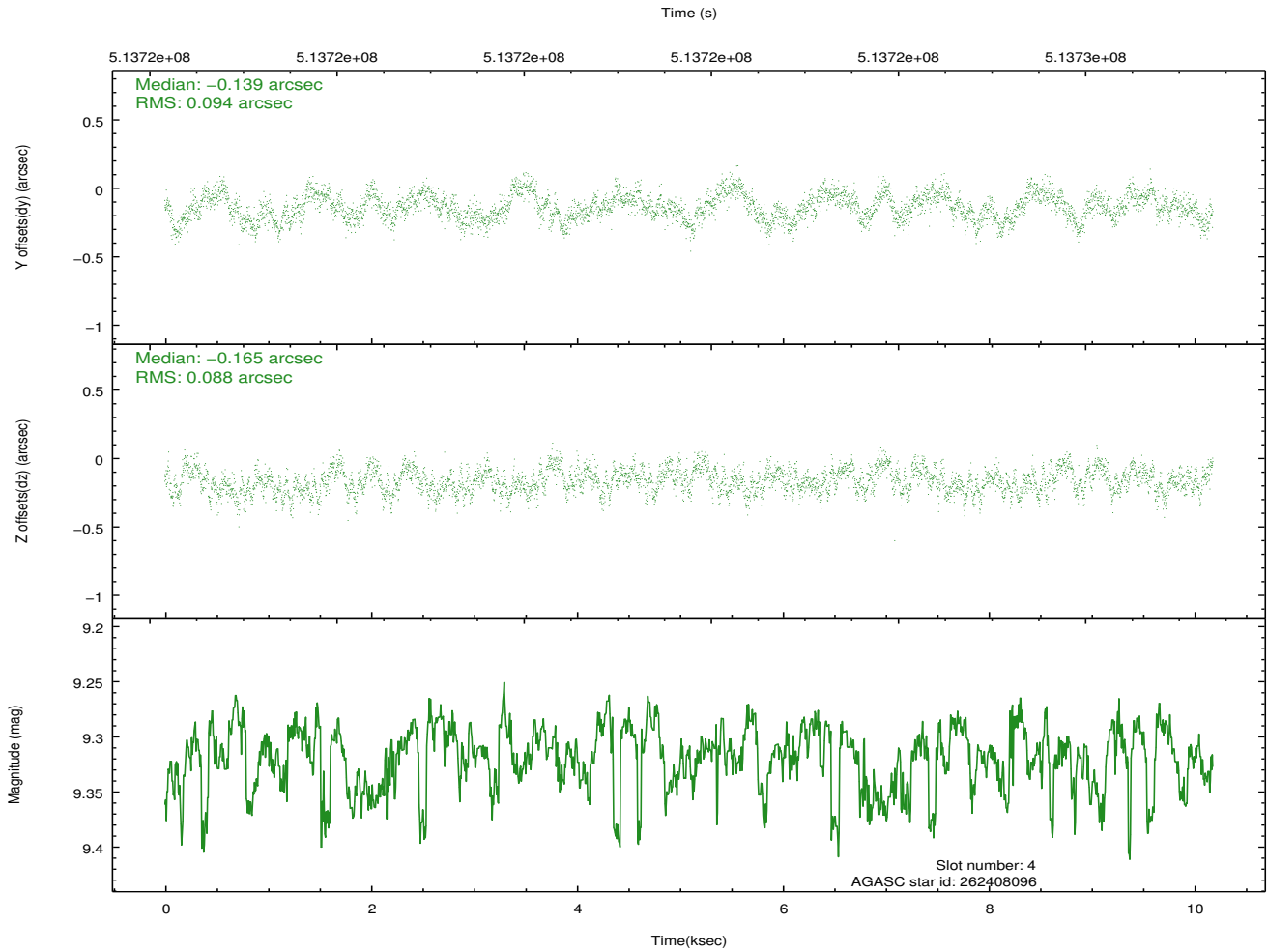
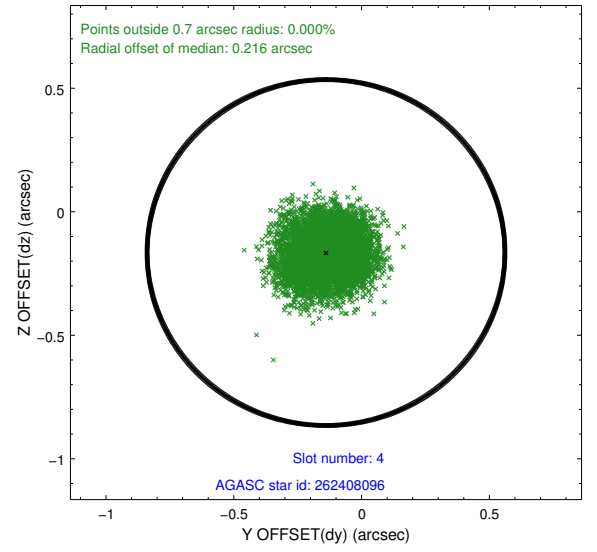
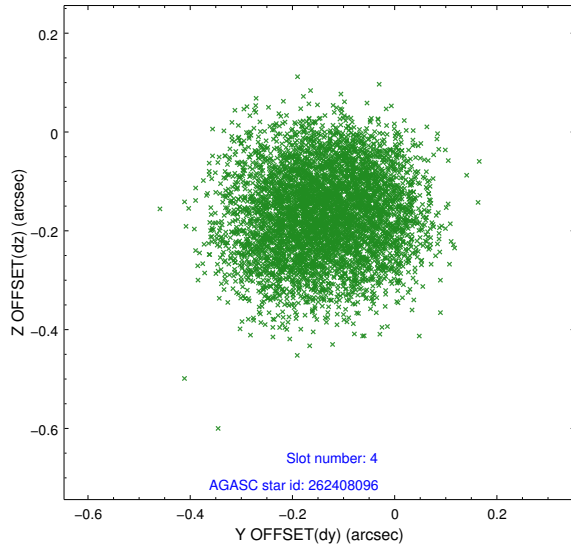
slot	status	used	id	mag	n_pts	med_dy	med_dz	dr1	dr2	ra	dec	mean_y	mean_z
0	FID		ACIS-S-1	7.19	2484	0.093	-0.155	0.019	0.036	0.000000	0.000000	924.42	-1531.96
1	FID		ACIS-S-5	7.22	2484	-0.174	0.031	0.014	0.027	0.000000	0.000000	-1824.49	365.41
2	FID		ACIS-S-6	7.26	2484	0.061	0.135	0.009	0.015	0.000000	0.000000	389.46	1009.99
3	GUIDE	used	262407608	9.35	4966	0.056	-0.016	0.124	0.199	207.378401	26.435507	-597.14	510.37
4	GUIDE	used	262408096	9.32	4961	-0.139	-0.165	0.141	0.214	207.011678	26.515421	617.91	447.25
5	GUIDE	used	262408512	7.99	4968	0.036	0.096	0.079	0.125	207.800210	27.128796	-1456.33	-2196.60
6	GUIDE	used	262408936	9.67	4965	-0.011	0.083	0.127	0.209	207.154731	26.726554	305.30	-384.98
7	GUIDE	used	262409552	8.19	4967	0.062	0.005	0.118	0.183	206.584269	27.192805	2413.48	-1698.87

2.4 Star Slots

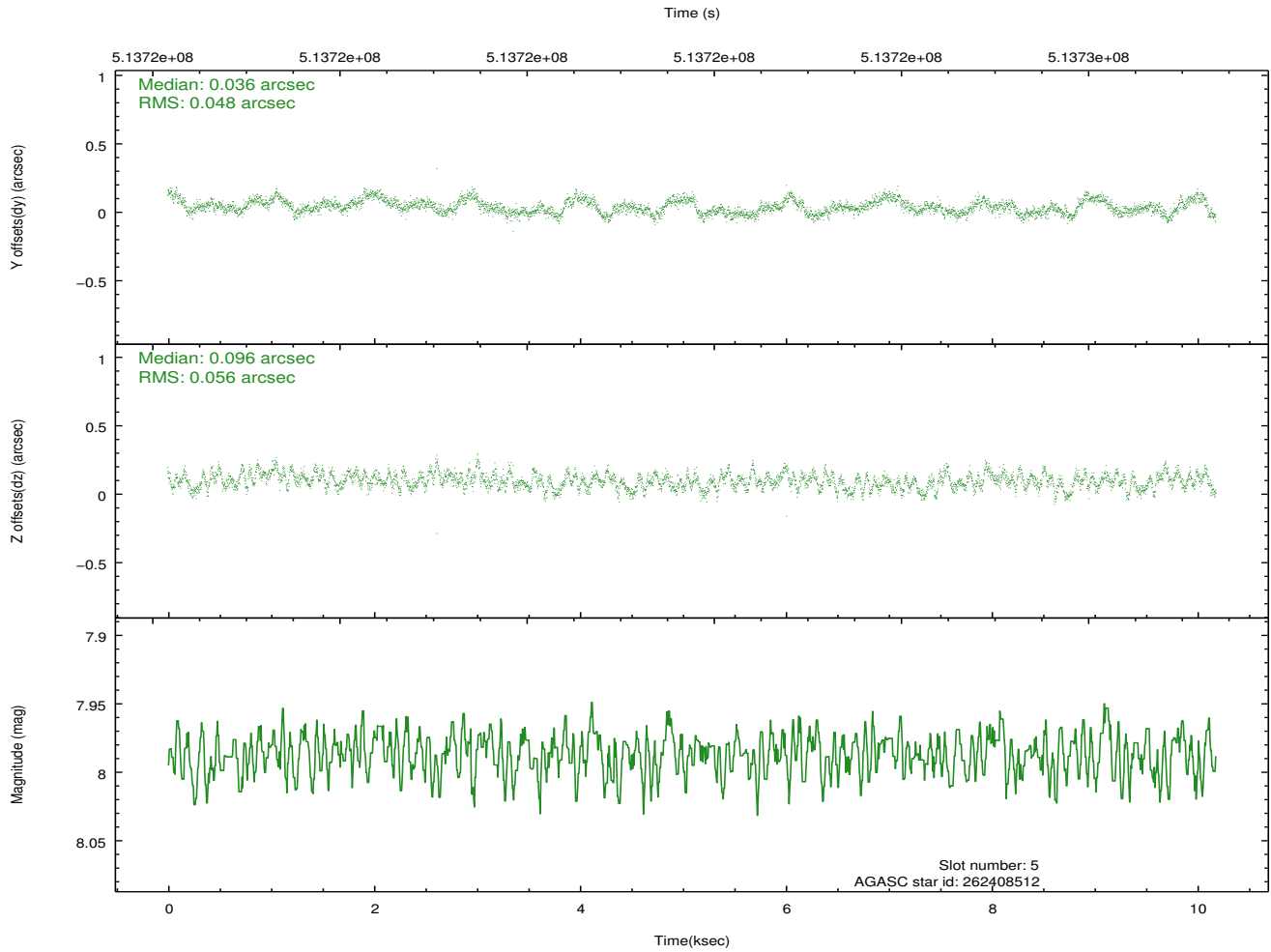
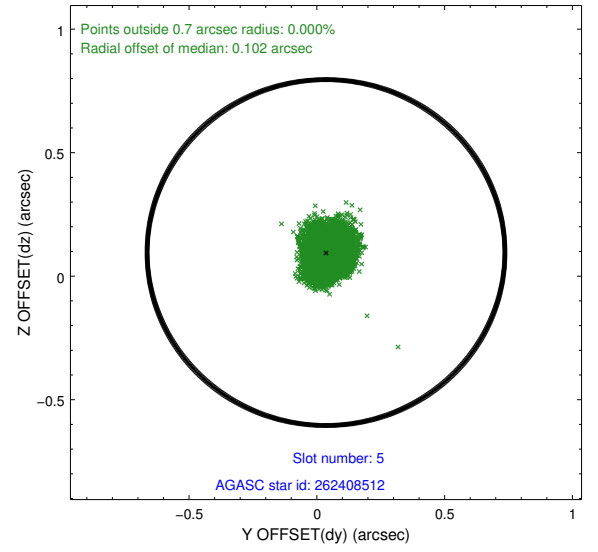
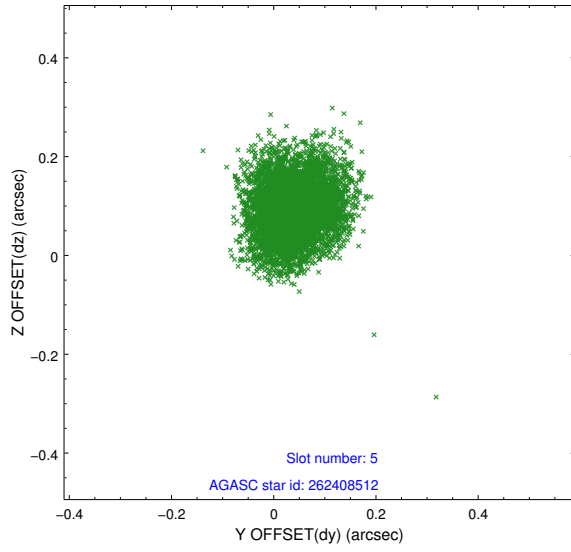
2.4.1 Slot 3



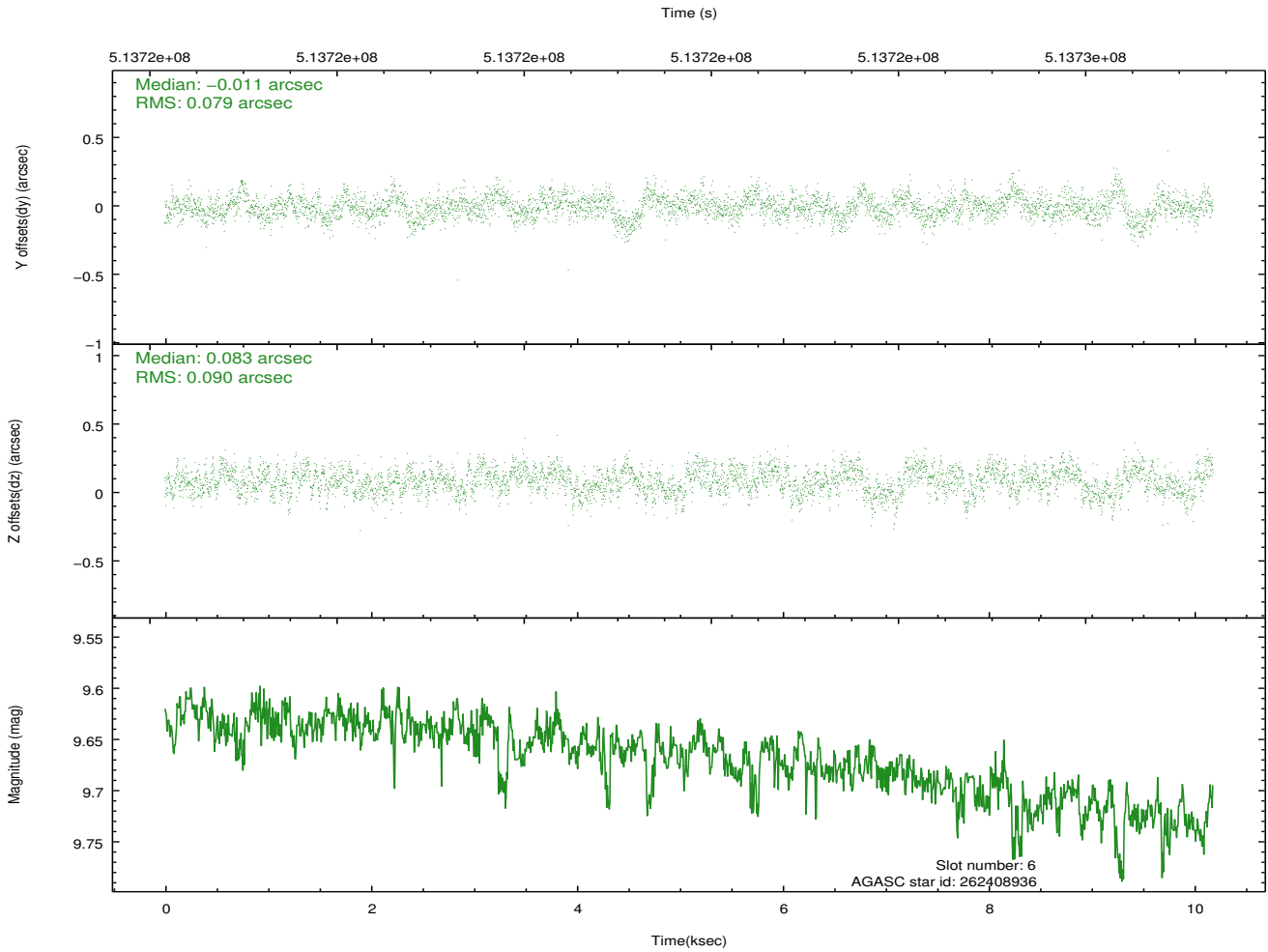
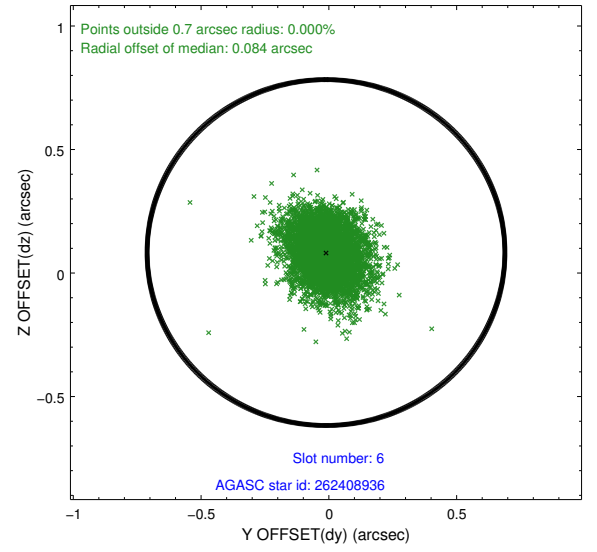
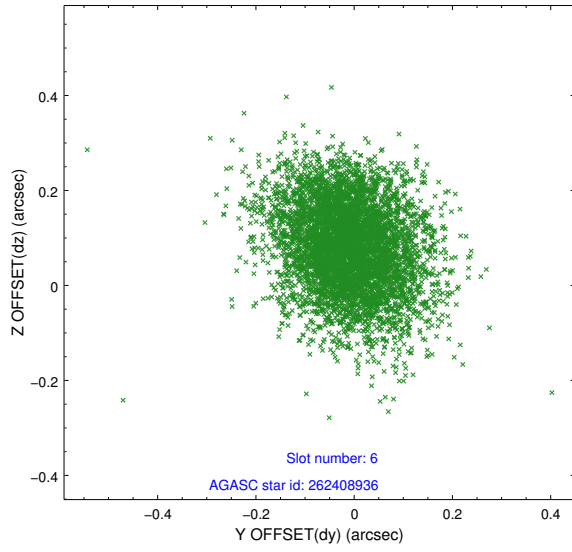
2.4.2 Slot 4



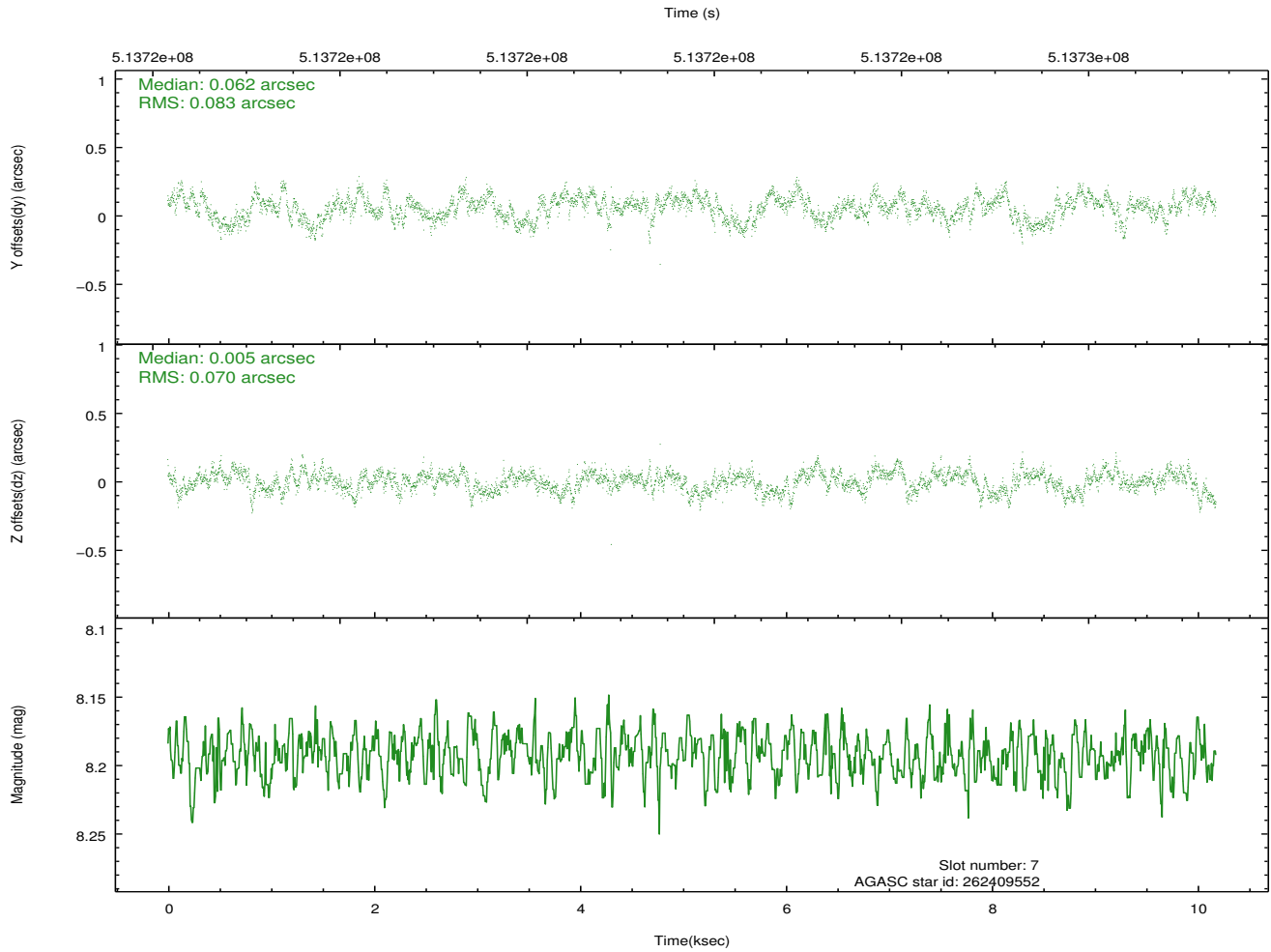
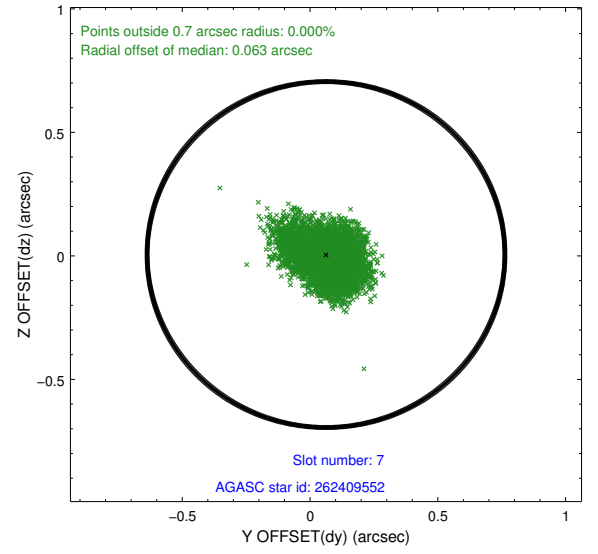
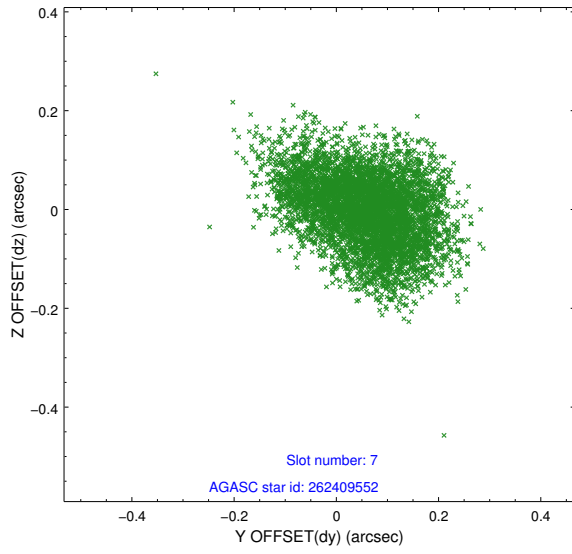
2.4.3 Slot 5



2.4.4 Slot 6

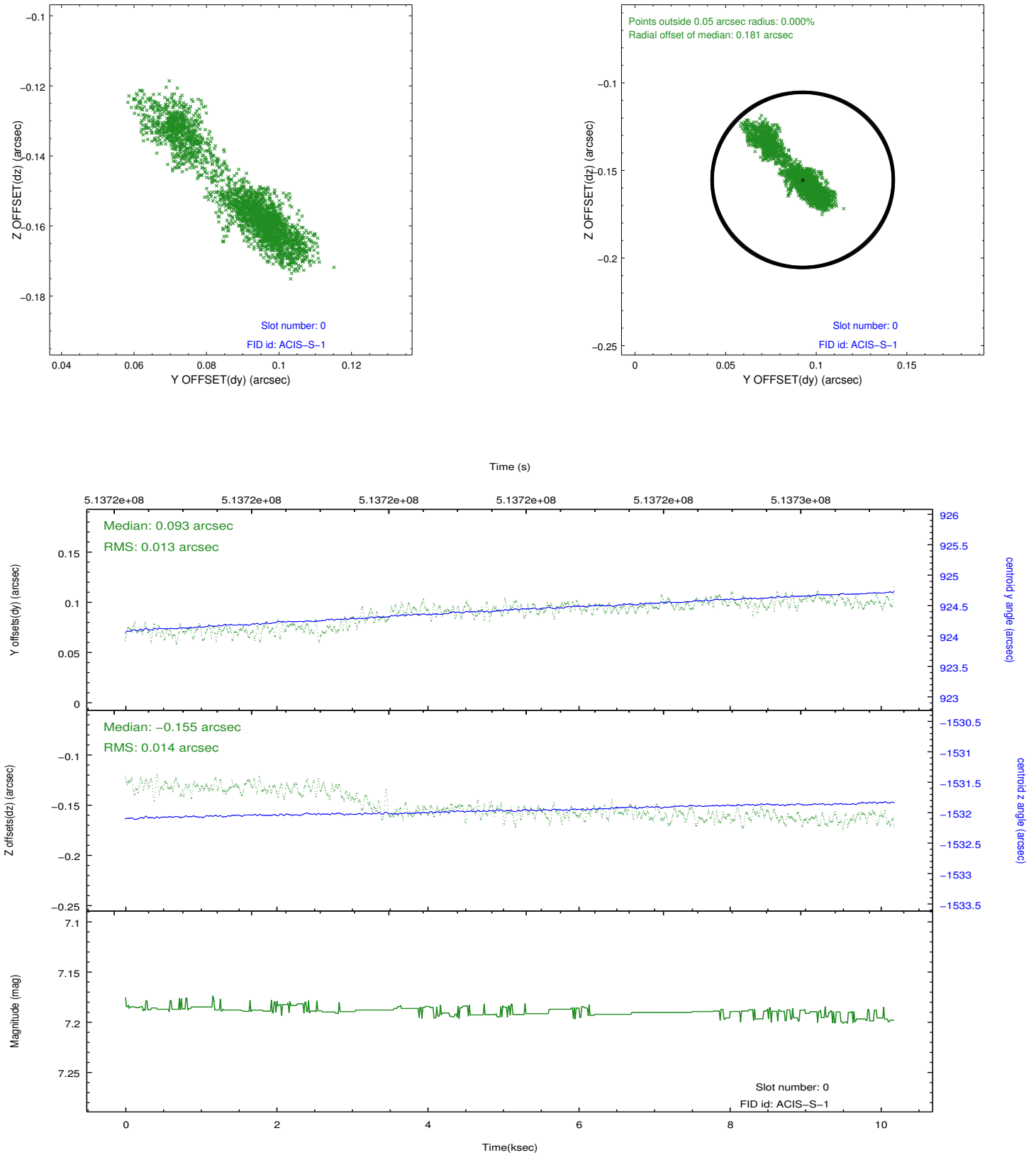


2.4.5 Slot 7

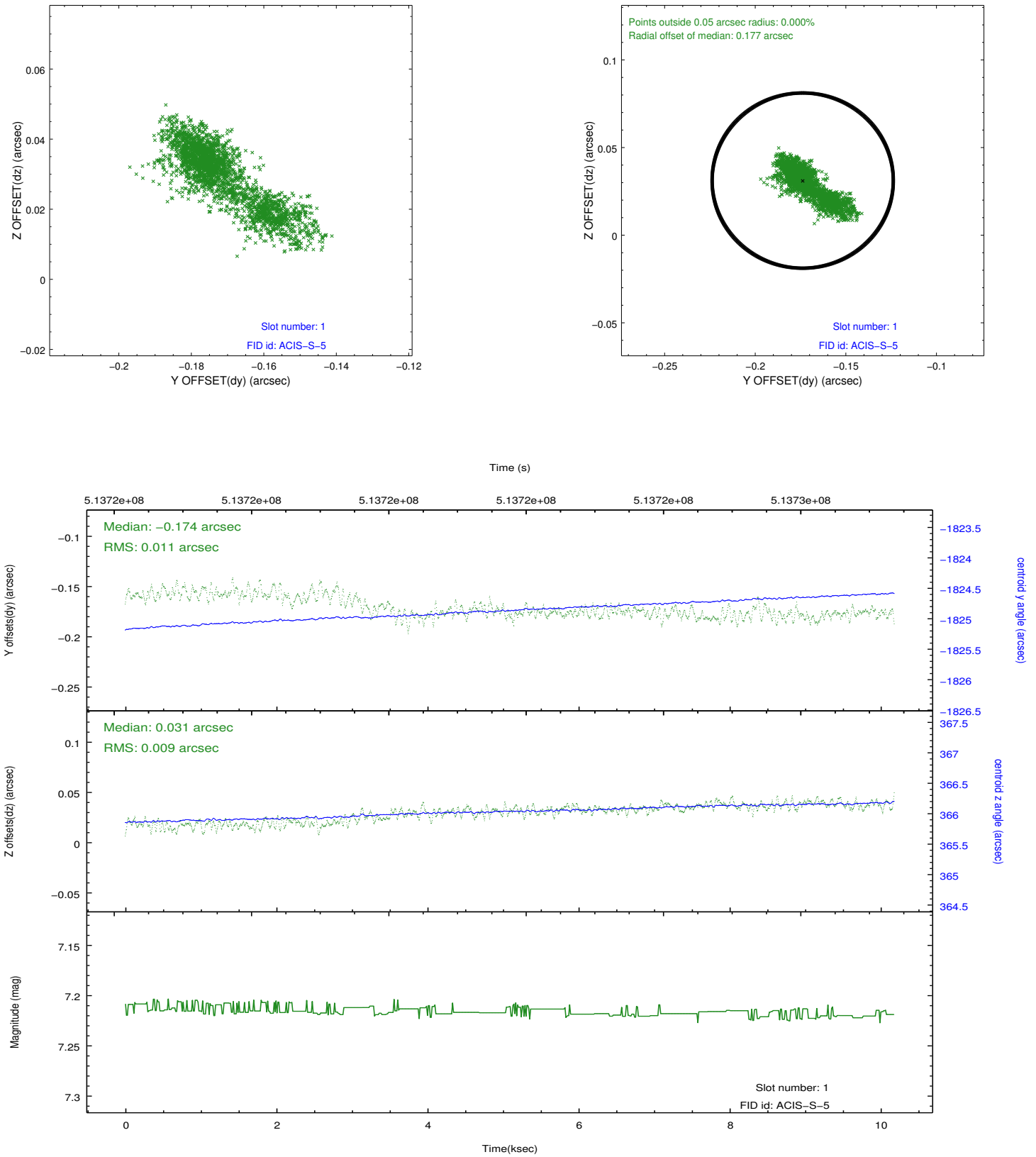


2.5 FID Slots

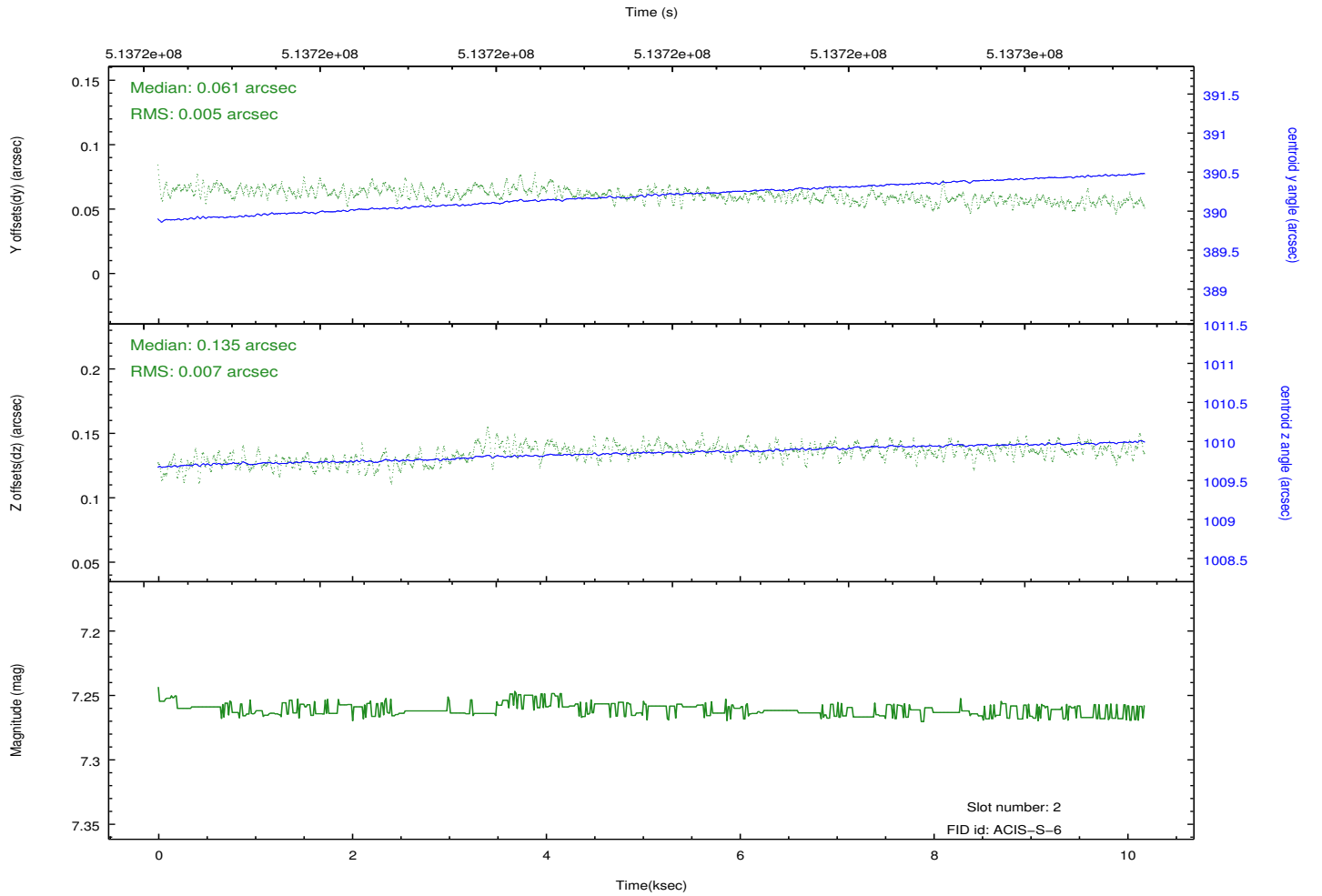
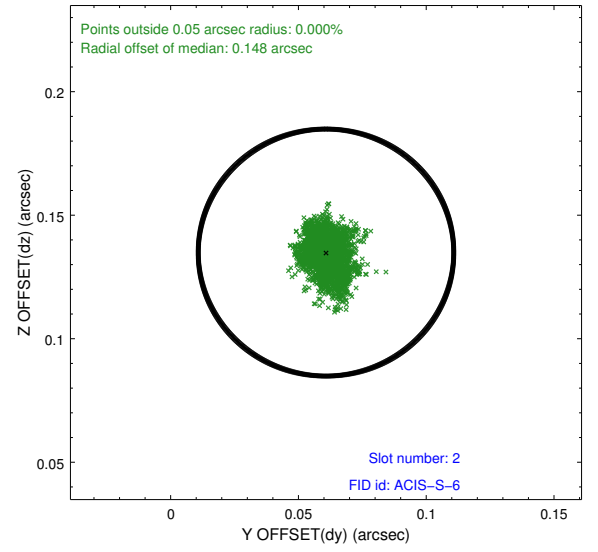
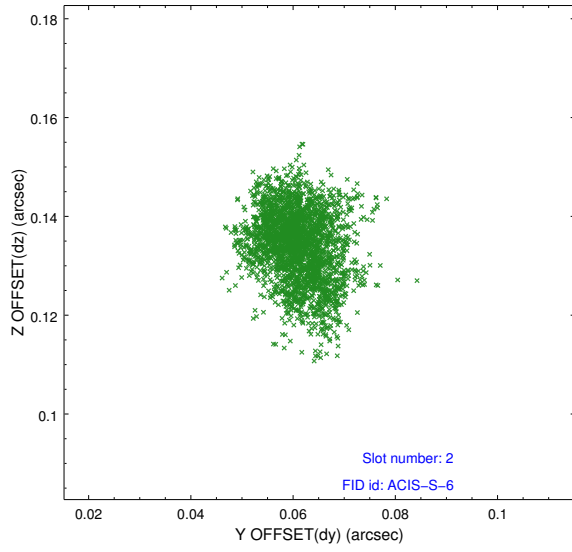
2.5.1 Slot 0



2.5.2 Slot 1



2.5.3 Slot 2



A Summary

A.1 Status

V&V Scientist	Beth Sundheim
V&V Date (YYYY-MM-DD)	2014.12.18
V&V Edition	1
V&V Disposition and Status	OK
V&V Charge Time	9.7730483692884

A.2 Comments

Window preference met.

These data have been reprocessed with new aspect alignment calibration files that correct small mean offsets (up to 0.4 arcsecs) and improve overall astrometric accuracy. The new calibration was determined using data from the time period being reprocessed and was performed using cross-correlation of X-ray sources with radio and optical counterparts.