

V&V Reference Report

L2 ASCDS Version : 10.2.1

Observation 16435 - L2 Version 3
Chandra X-Ray Center

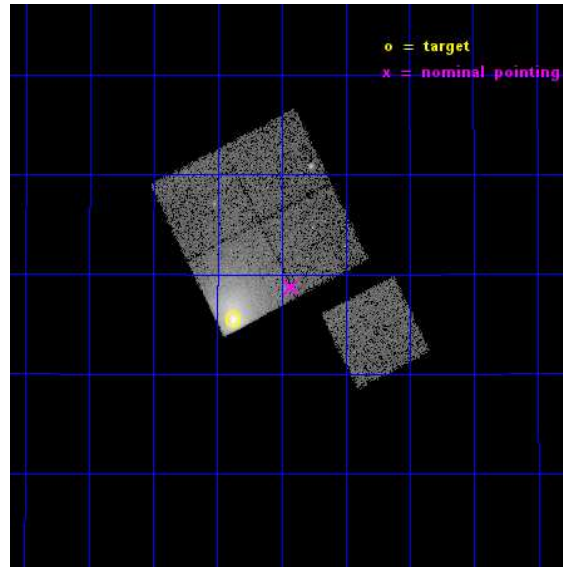
L2 Processing Date : Dec 10 2014

Contents

1	Front	2
2	OBI	3
2.1	OBI	3
2.1.1	Images	3
2.1.2	Bias	3
2.1.3	Parameters	4
2.1.4	Events	4
2.2	Compared Parameters	5
2.3	Aspect	6
2.4	Star Slots	9
2.4.1	Slot 3	9
2.4.2	Slot 4	10
2.4.3	Slot 5	11
2.4.4	Slot 6	12
2.4.5	Slot 7	13
2.5	FID Slots	14
2.5.1	Slot 0	14
2.5.2	Slot 1	15
2.5.3	Slot 2	16
A	Summary	17
A.1	Status	17
A.2	Comments	17

1 Front

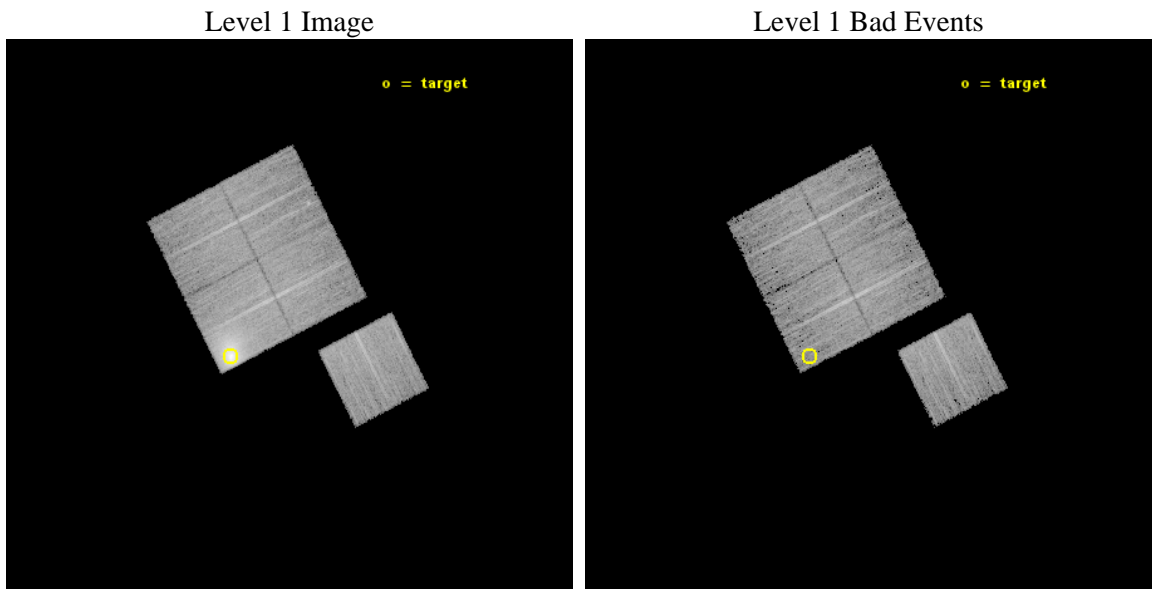
seq_num	890082	Sequence number
obs_id	16435	Observation id
title	AO-15 Calibration Observations of A1795	Proposal title
observer	Dr. CXC Calibration	Principal investigator
object	A1795	Source name
dtcycle	0	
cycle	P	events from which exps? Prim/Second/Both
ra_targ	207.219583	Observer's specified target RA [deg]
dec_targ	26.590833	Observer's specified target Dec [deg]
ra_nom	207.1056335403	Nominal RA [deg]
dec_nom	26.645000931099	Nominal Dec [deg]
roll_nom	153.07817678695	Nominal Roll [deg]
revision	3	Processing version of data
ontime	14770.45082128	Sum of GTIs [s]
livetime	14577.464007453	Livetime [s]
ontime0	14770.327701271	Sum of GTIs [s]
ontime1	14767.227670908	Sum of GTIs [s]
ontime2	14770.409781277	Sum of GTIs [s]
ontime3	14770.45082128	Sum of GTIs [s]
ontime6	14770.286661267	Sum of GTIs [s]
l2events	101162	Number of level 2 events



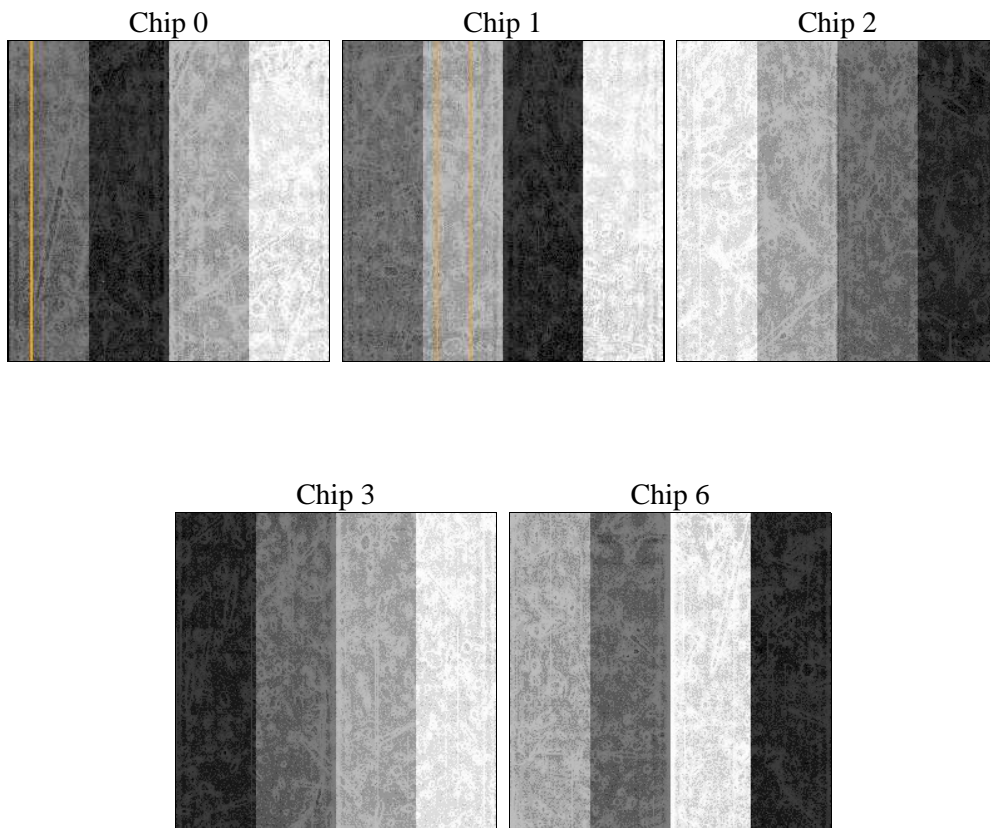
2 OBI

2.1 OBI

2.1.1 Images



2.1.2 Bias



2.1.3 Parameters

obi_num	0	Obi number	sched_exp_time	15000.000000	[s] Scheduled observation exposure time
ascdsver	10.3.1	Processing system revision	ontime	14770.45082128	Sum of GTIs [s]
caldbver	4.6.4	 	ontime0	14770.327701271	Sum of GTIs [s]
date	2014-12-10T18:36:13	Date and time of file creation	ontime1	14767.227670908	Sum of GTIs [s]
revision	3	Processing version of data	ontime2	14770.409781277	Sum of GTIs [s]
			ontime3	14770.45082128	Sum of GTIs [s]
			ontime6	14770.286661267	Sum of GTIs [s]
			l1events	406944	Number of level 1 events

2.1.4 Events

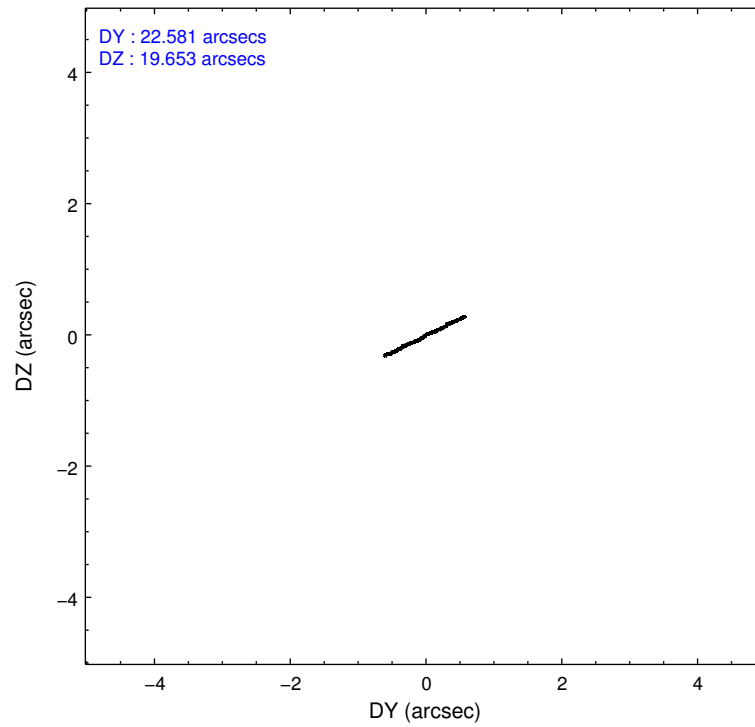
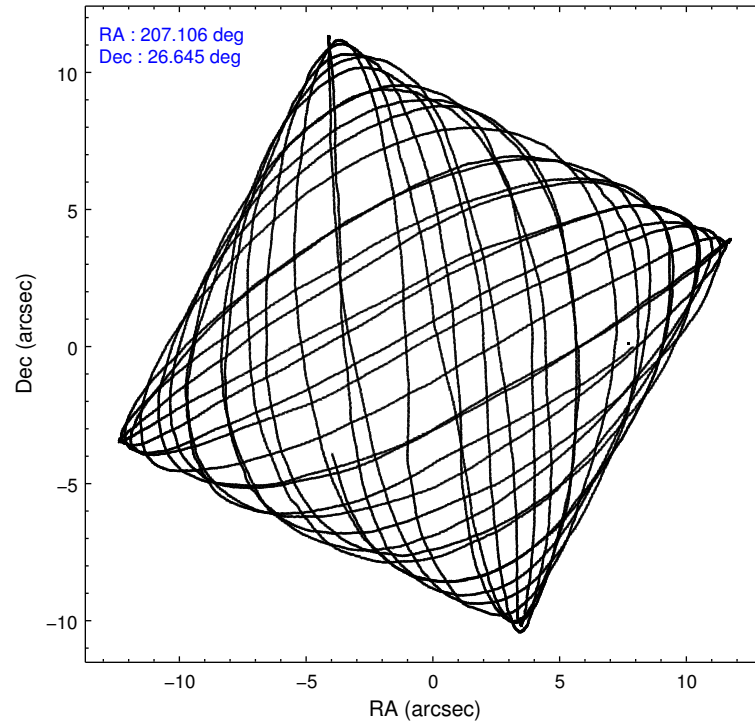
	ccd 0	ccd 1	ccd 2	ccd 3	ccd 6
level 1 events	64487	66383	71725	132094	72255
rejected events	55667	55972	62233	60973	63320
rejected %	86%	84%	86%	46%	87%

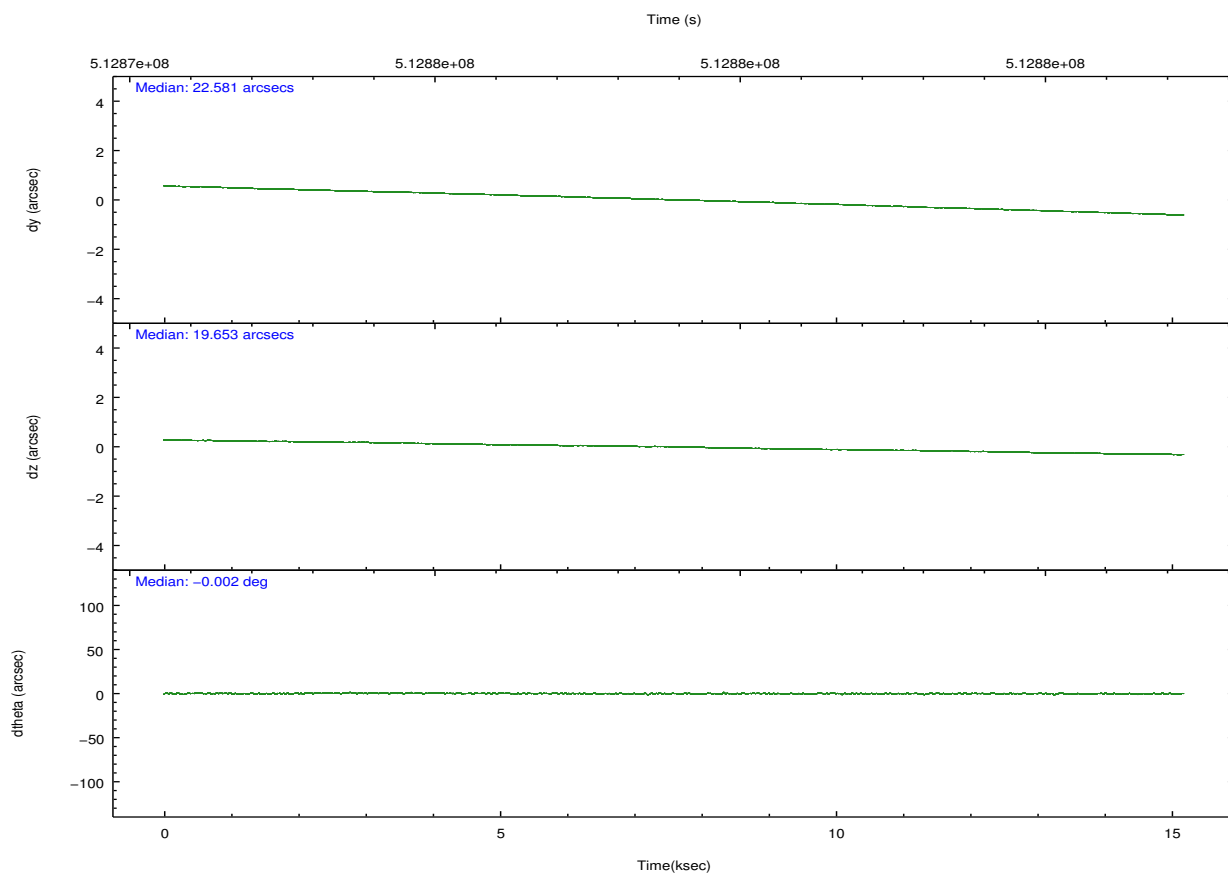
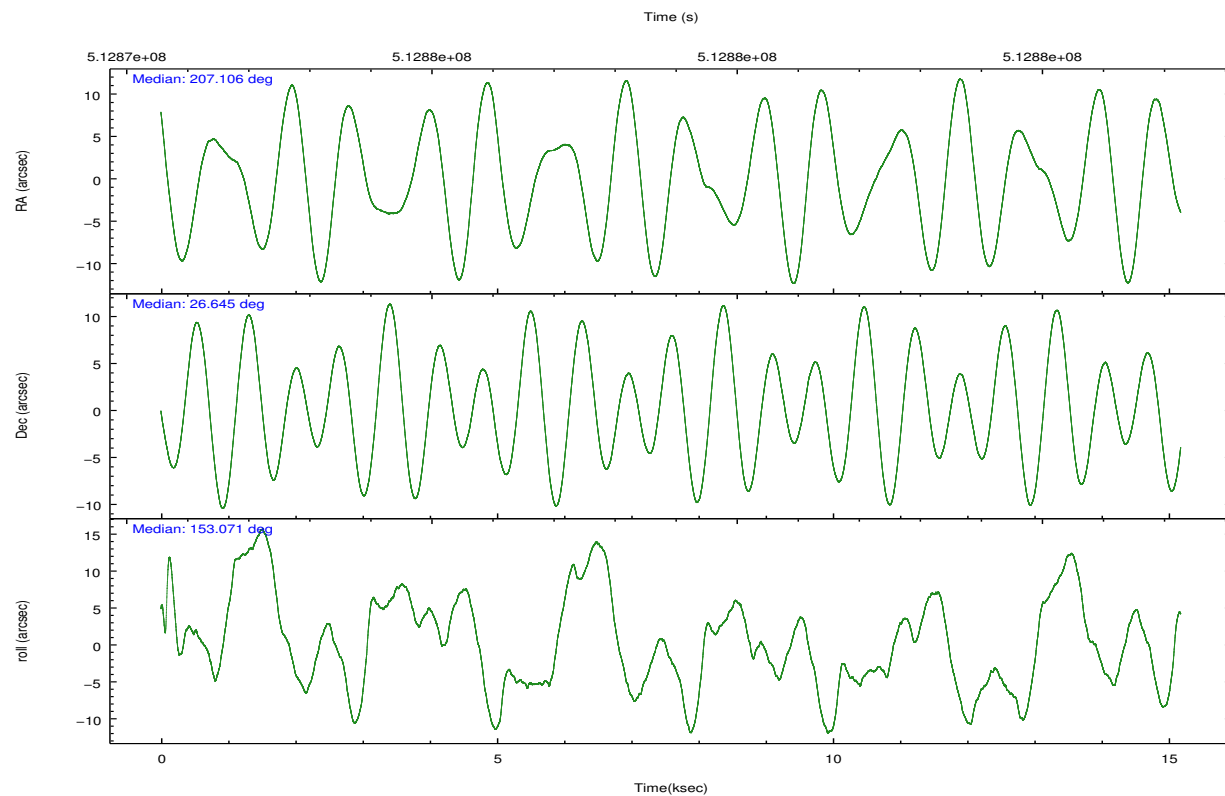
	ccd 0	ccd 1	ccd 2	ccd 3	ccd 6
grade 0 events	3280	4175	4019	52956	3151
	5%	6%	5%	40%	4%
grade 1 events	48	39	37	205	28
	0%	0%	0%	0%	0%
grade 2 events	2095	2303	2120	8546	1908
	3%	3%	2%	6%	2%
grade 3 events	866	945	868	2964	952
	1%	1%	1%	2%	1%
grade 4 events	823	927	832	3033	932
	1%	1%	1%	2%	1%
grade 5 events	3421	3518	3178	4029	3722
	5%	5%	4%	3%	5%
grade 6 events	1763	2069	1660	3662	2000
	2%	3%	2%	2%	2%
grade 7 events	52191	52407	59011	56699	59562
	80%	78%	82%	42%	82%

2.2 Compared Parameters

Parameter	Planned	Actual	Parameter	Planned	Actual
Instrument	ACIS	ACIS	Obspar format version number	7	7
Detector	ACIS-01236	ACIS-01236	Obspar file type	PREDICTED	ACTUAL
Grating	NONE	NONE	Obspar update status	NONE	UPDATED
Data mode	VFAINT	VFAINT	Number of optional ACIS chips dropped	0	0
Observation mode	POINTING	POINTING	On-chip summing requested	N	N
[deg] Pointing RA	207.136360	207.1056335402973	Subarray requested	NONE	NONE
[deg] Pointing Dec	26.646615	26.64500093109864	Alternating exposures requested	N	N
[deg] Pointing Roll	152.855708	153.0781767869459	[s] Primary exposure time	0.000000	3.1
[s] Window start time (MET)	512697667.184000	512697667.184000			
[s] Window stop time (MET)	515203267.184000	515203267.184000			
[mm] SIM focus pos	-0.782348	-0.7809083437167272			
[mm] SIM defocus	0	0.001439871863259334			
[mm] SIM translation stage pos	-214.092463	-214.0989765584371			
[mm] SIM translation stage offset	-19.5	-19.49347644449256			
[s] Observation start time (MET)	512871497.184000	512871121.06903			
Observation start date	2014-04-03T00:17:10	2014-04-03T00:12:01			
[s] Observation end time (MET)	512886497.184000	512886630.85739			
Observation end date	2014-04-03T04:27:10	2014-04-03T04:30:30			
Read mode	TIMED	TIMED			

2.3 Aspect



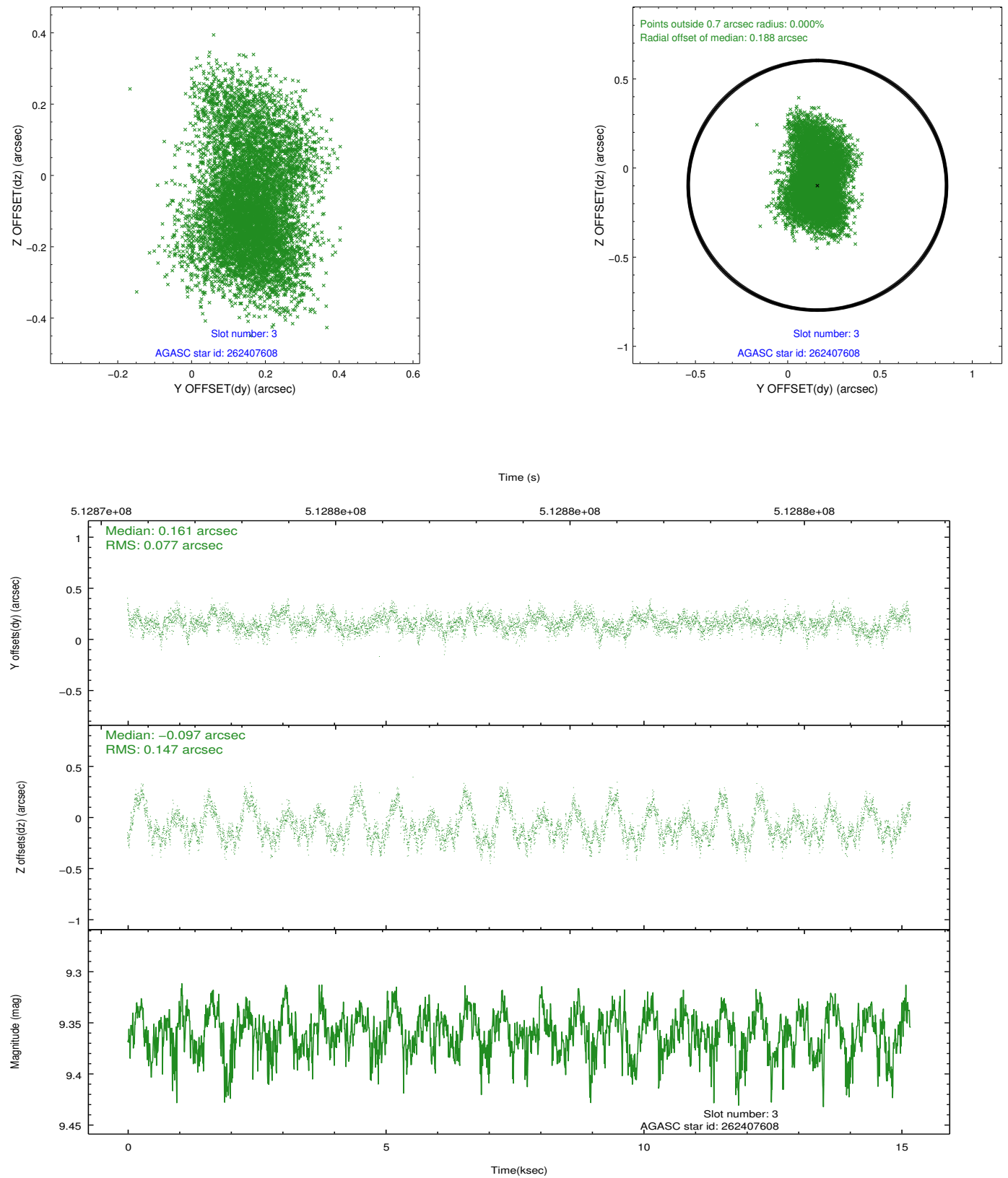


Slot Statistics

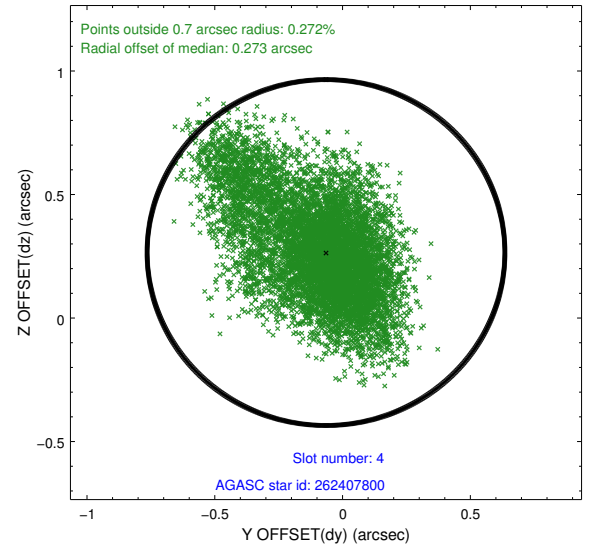
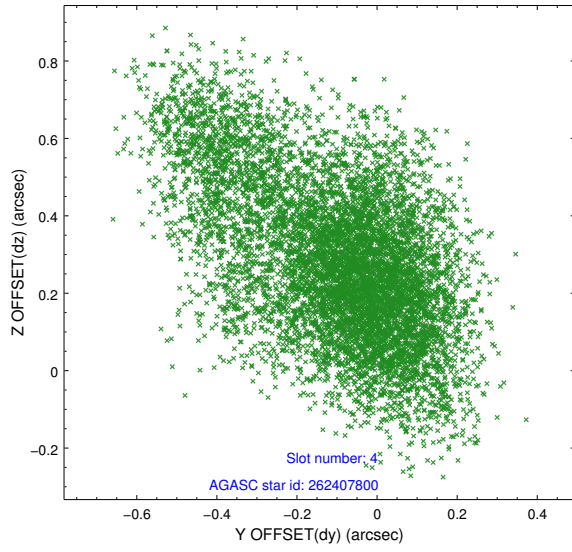
slot	status	used	id	mag	n_pts	med_dy	med_dz	dr1	dr2	ra	dec	mean_y	mean_z
0	FID		ACIS-I-1	7.14	3703	0.289	-0.208	0.014	0.040	0.000000	0.000000	916.60	-1243.89
1	FID		ACIS-I-5	7.14	3703	-0.547	0.185	0.013	0.024	0.000000	0.000000	-1832.18	653.72
2	FID		ACIS-I-6	7.17	3703	0.166	0.094	0.016	0.027	0.000000	0.000000	381.69	1298.49
3	GUIDE	used	262407608	9.36	7402	0.161	-0.097	0.174	0.303	207.378401	26.435507	-1040.40	319.69
4	GUIDE	used	262407800	10.07	7349	-0.065	0.265	0.281	0.512	207.321181	27.251762	470.31	-2206.59
5	GUIDE	used	262408096	9.32	7398	-0.072	-0.140	0.178	0.289	207.011678	26.515421	142.87	603.22
6	GUIDE	used	262408936	9.67	7399	-0.089	0.089	0.260	0.414	207.154731	26.726554	78.76	-282.56
7	GUIDE	used	262411960	9.68	7401	0.091	-0.142	0.136	0.226	207.327895	25.881727	-1807.97	2166.75

2.4 Star Slots

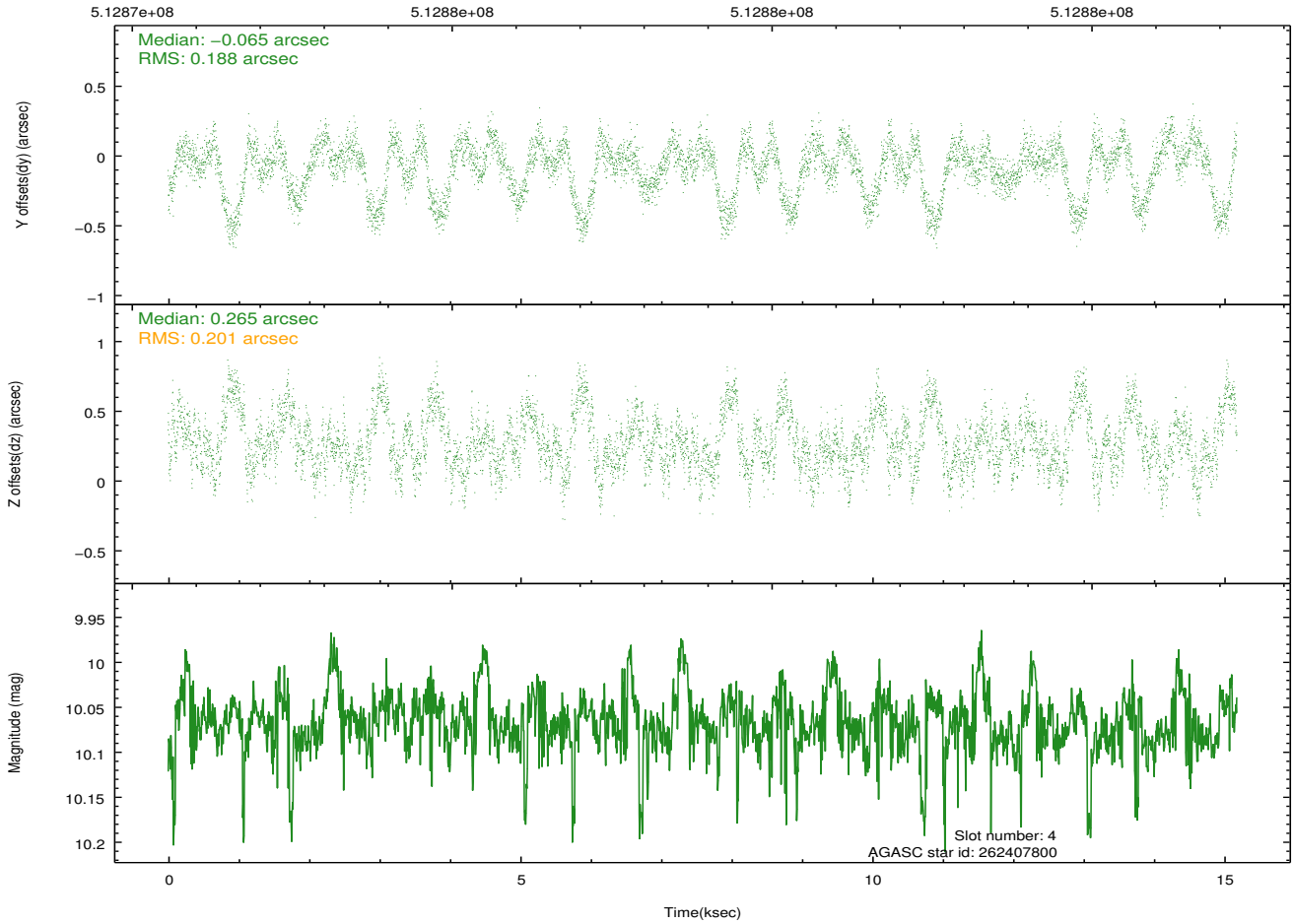
2.4.1 Slot 3



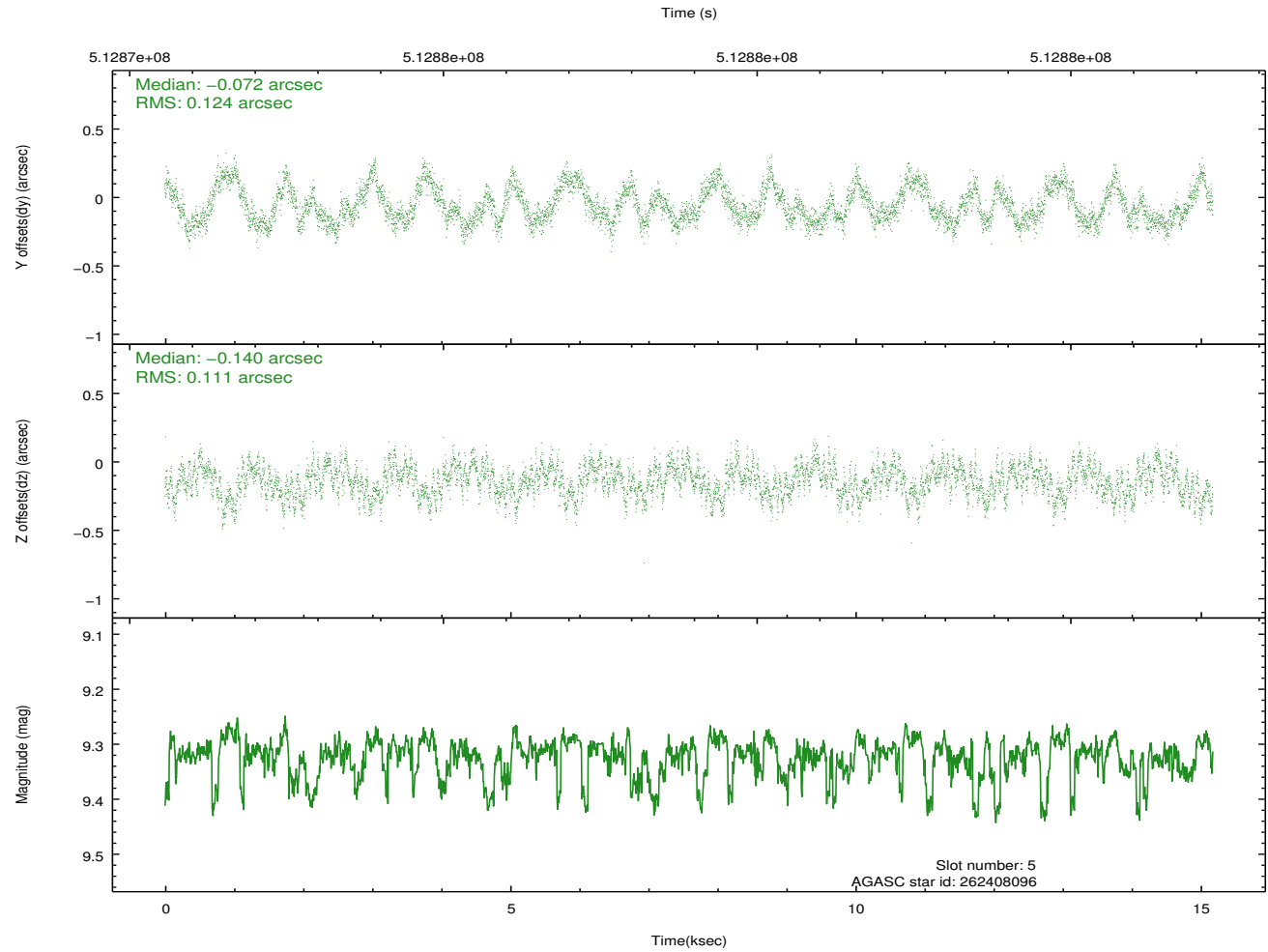
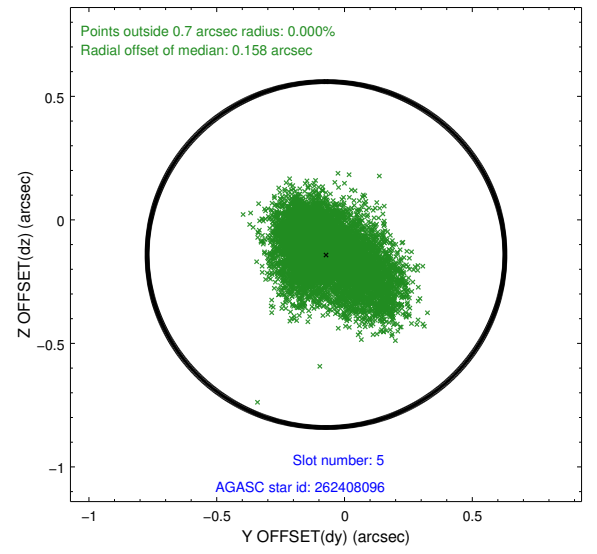
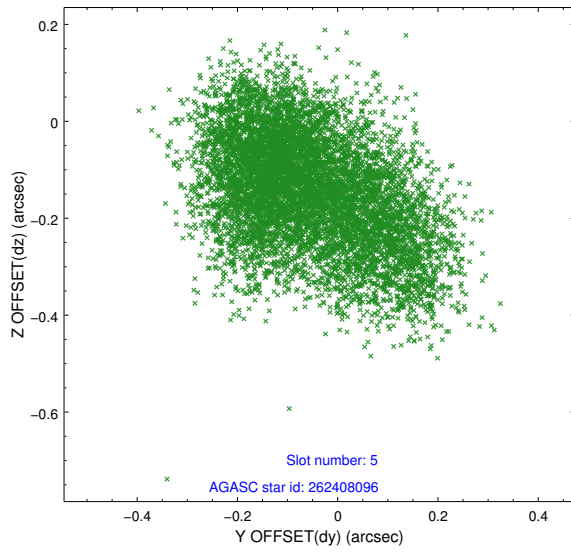
2.4.2 Slot 4



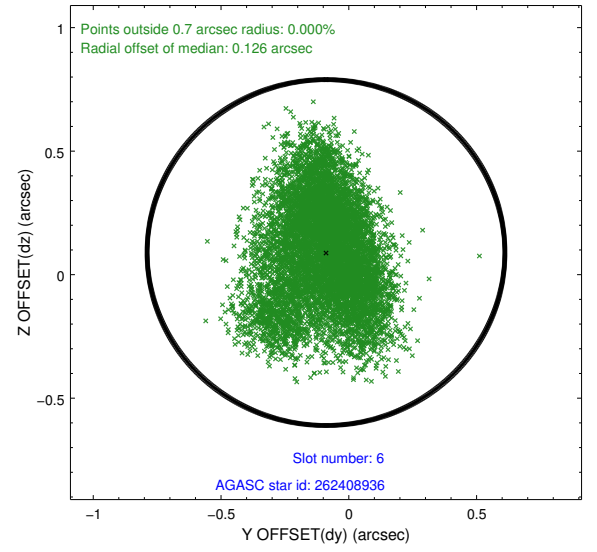
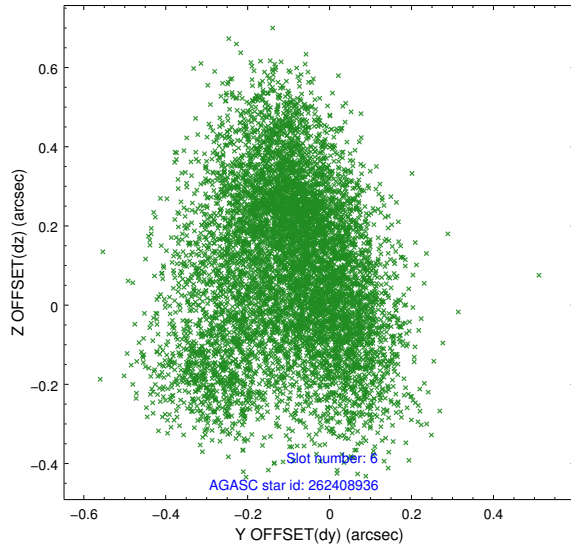
Time (s)



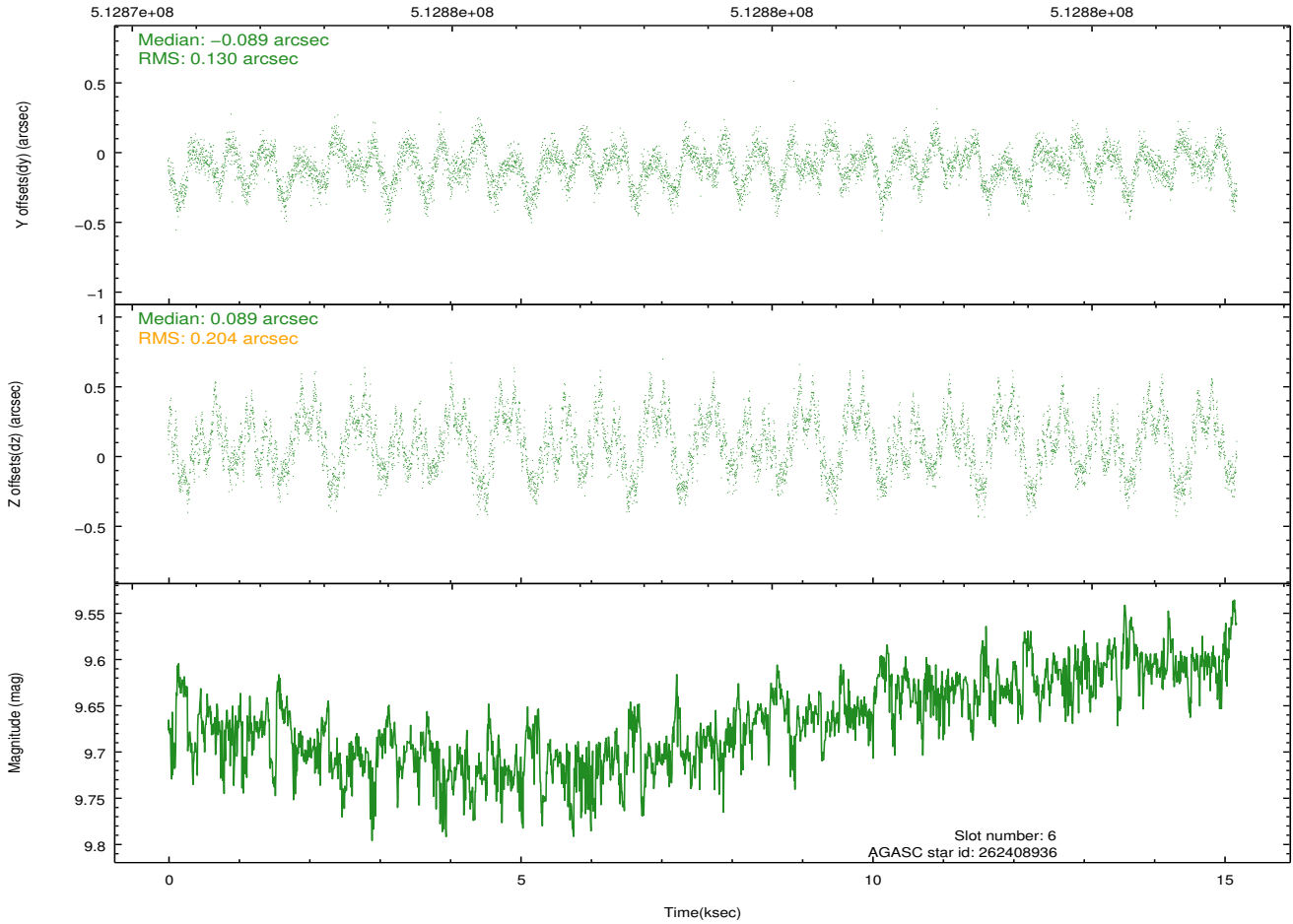
2.4.3 Slot 5



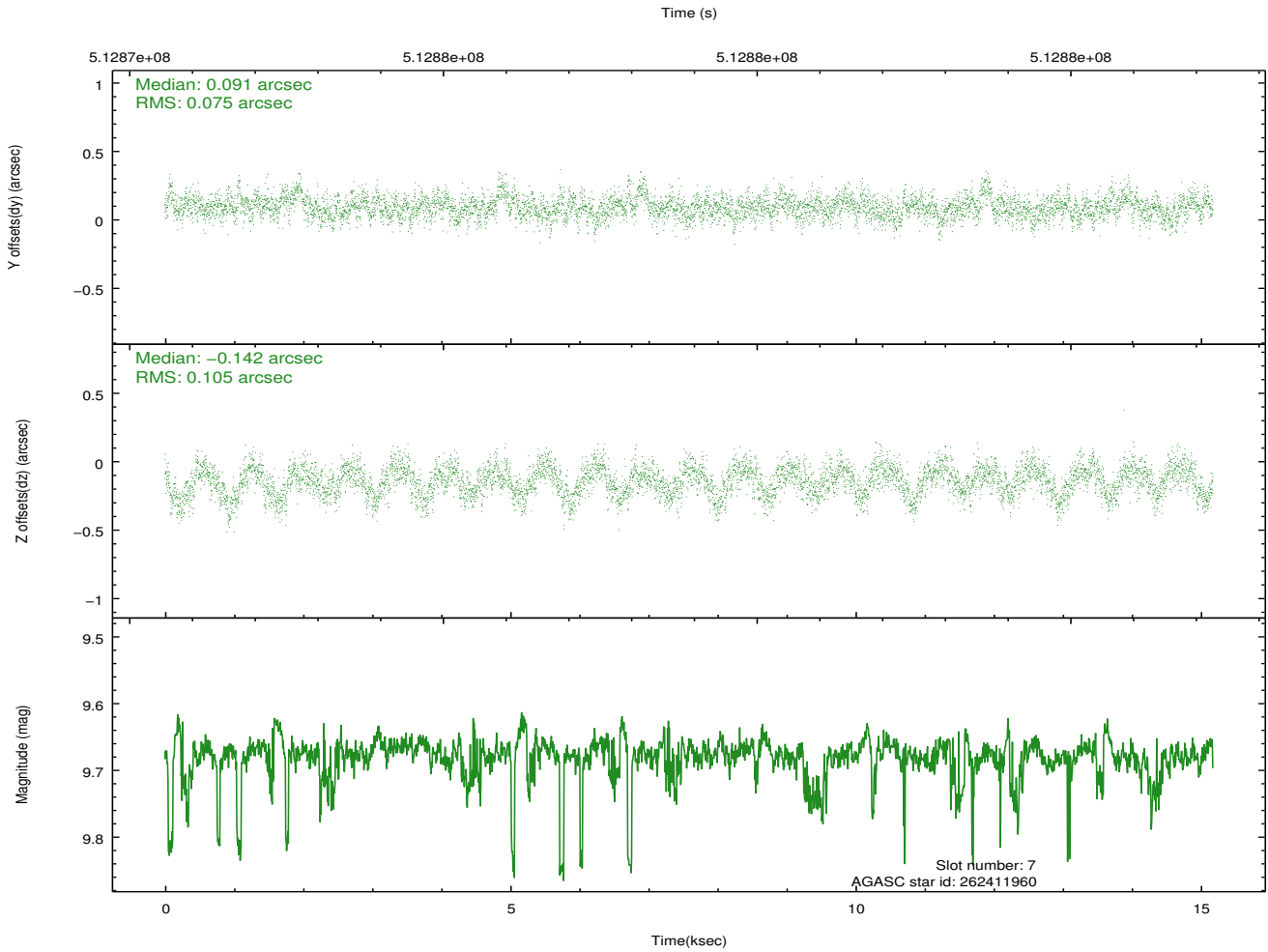
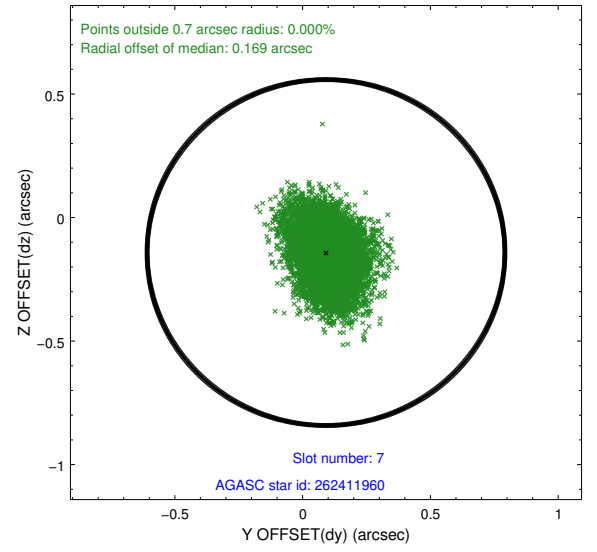
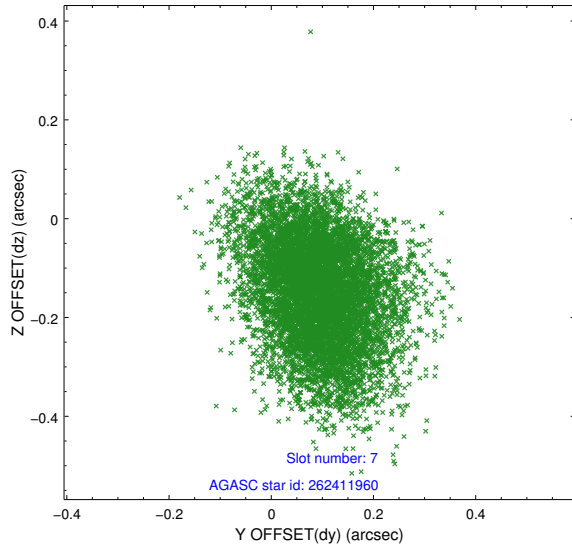
2.4.4 Slot 6



Time (s)

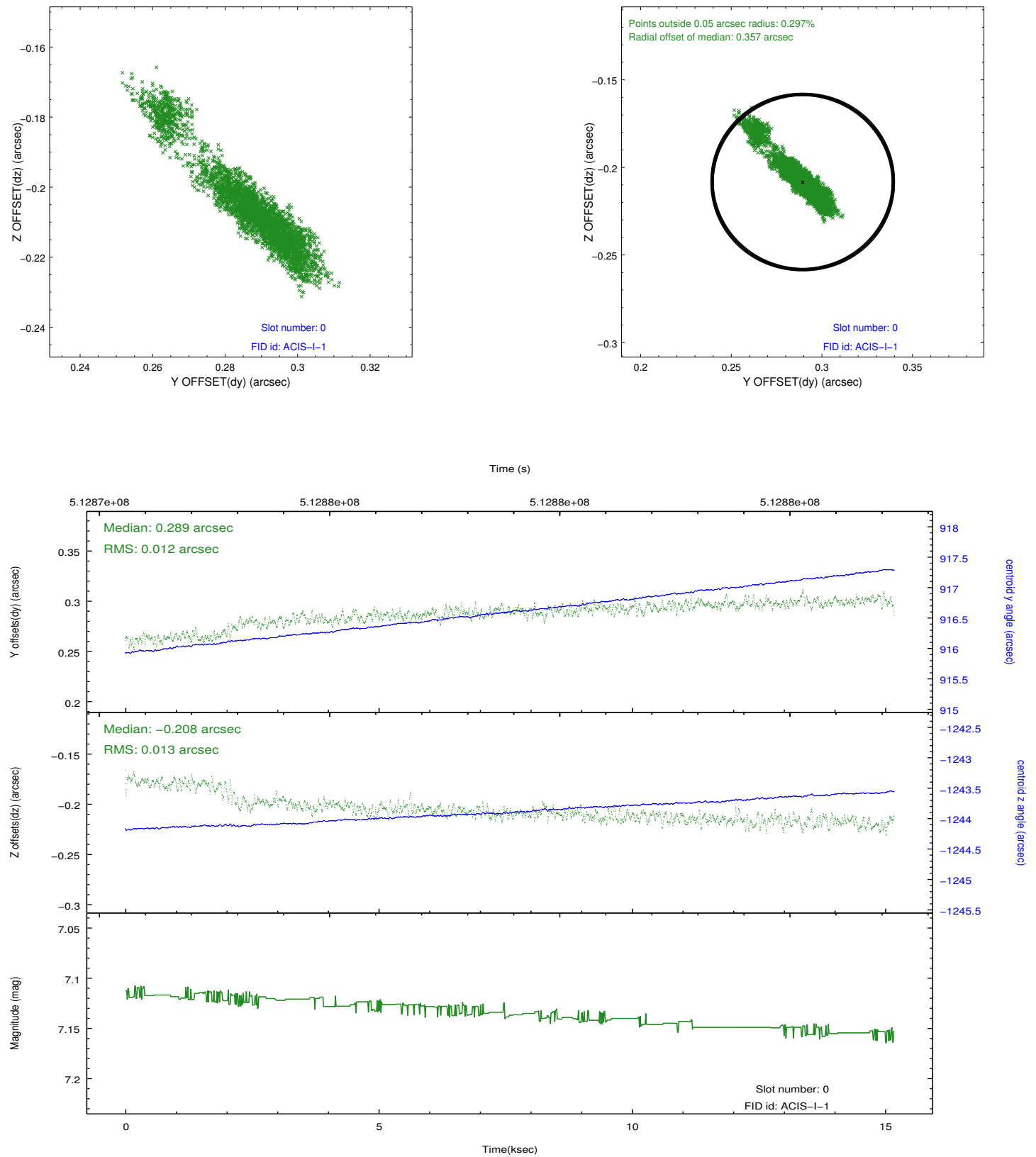


2.4.5 Slot 7

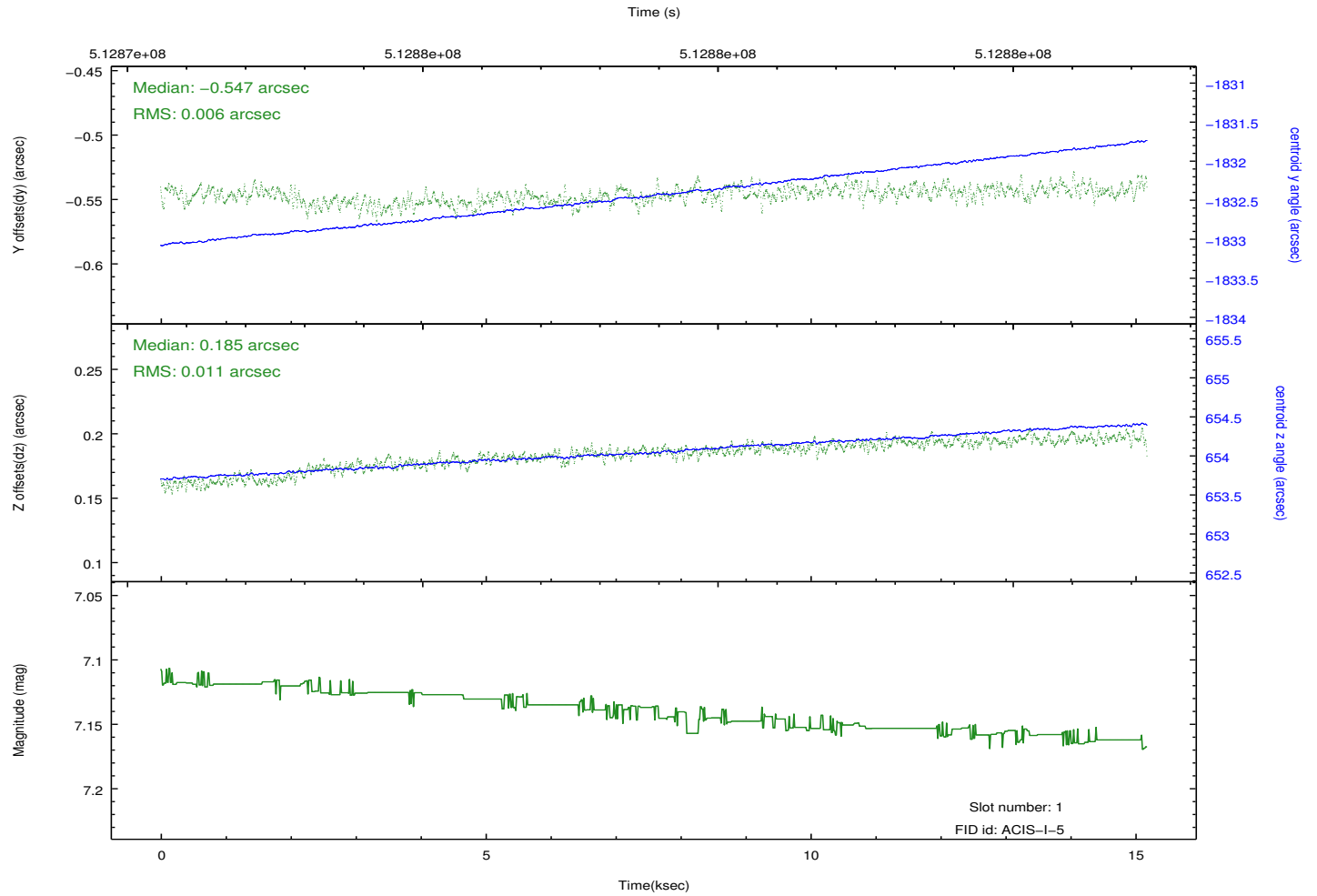
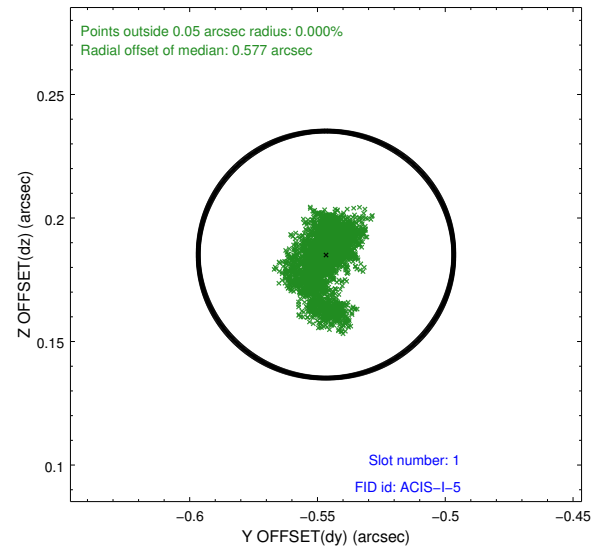
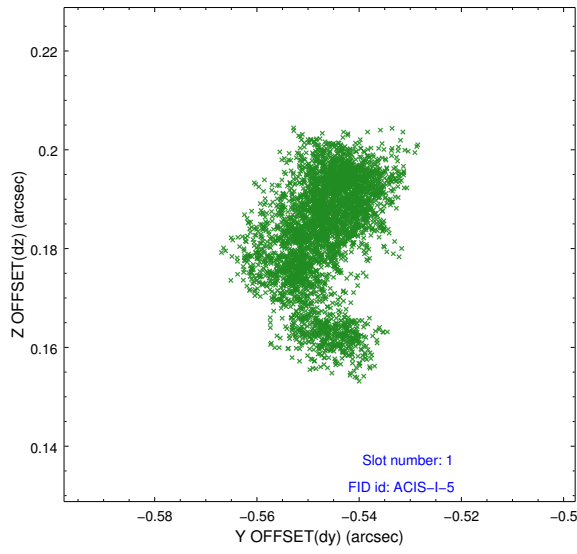


2.5 FID Slots

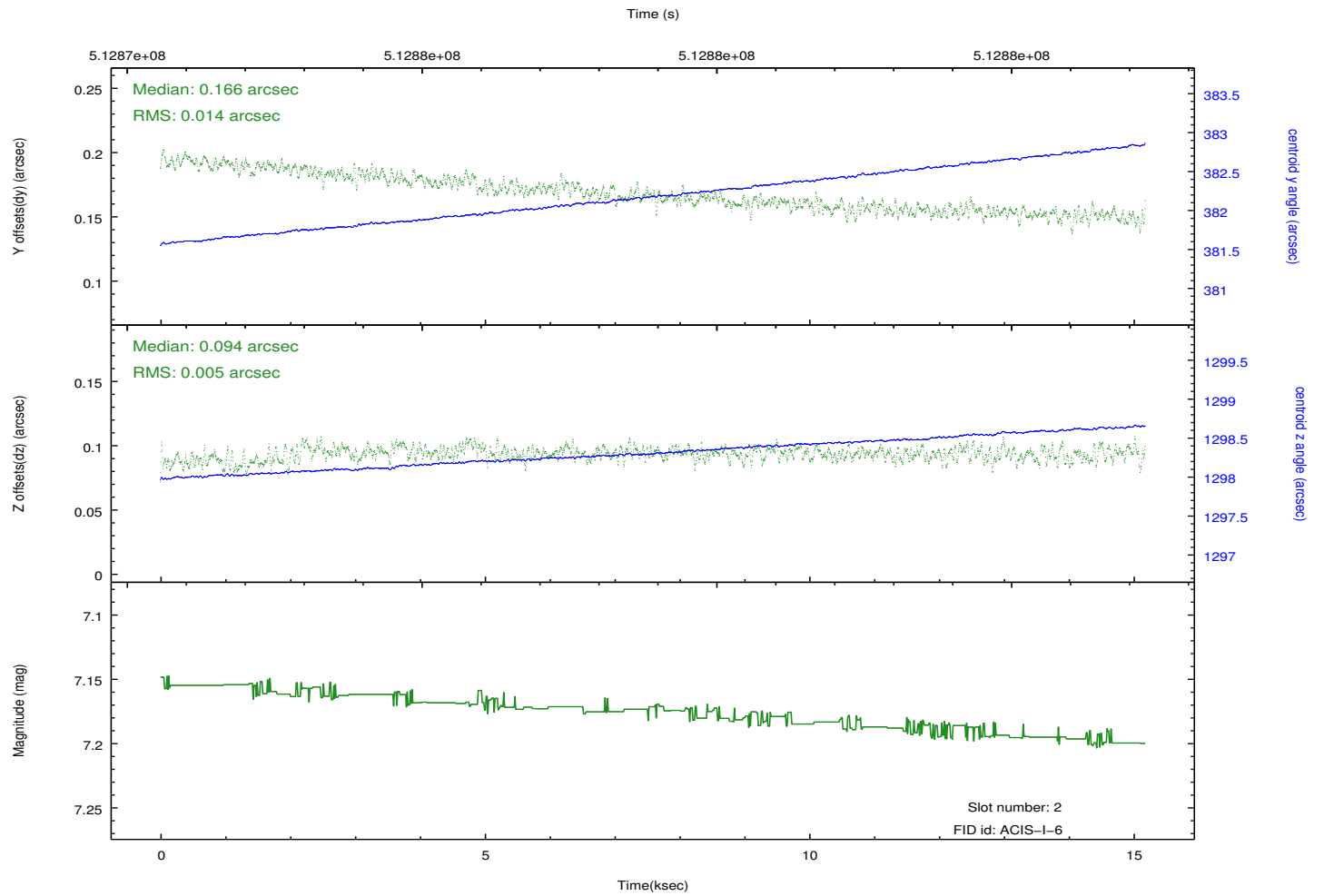
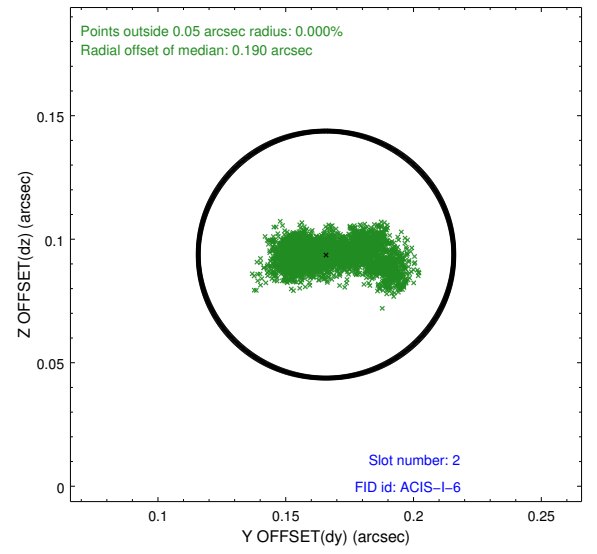
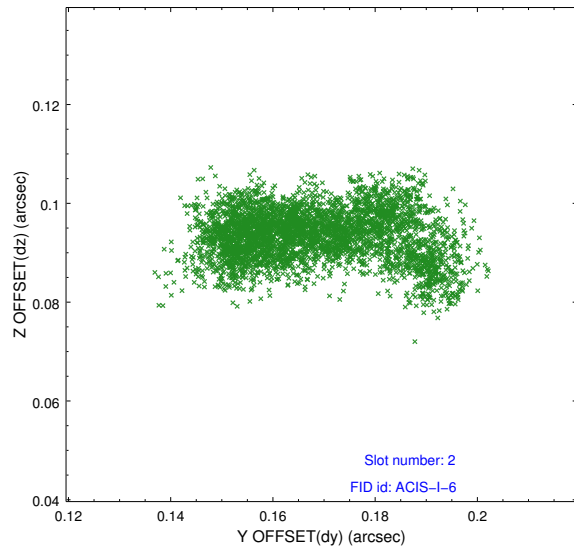
2.5.1 Slot 0



2.5.2 Slot 1



2.5.3 Slot 2



A Summary

A.1 Status

V&V Scientist	Beth Sundheim
V&V Date (YYYY-MM-DD)	2014.12.18
V&V Edition	1
V&V Disposition and Status	OK
V&V Charge Time	14.77045082128

A.2 Comments

Window preference met.

These data have been reprocessed with new aspect alignment calibration files that correct small mean offsets (up to 0.4 arcsecs) and improve overall astrometric accuracy. The new calibration was determined using data from the time period being reprocessed and was performed using cross-correlation of X-ray sources with radio and optical counterparts.