

# V&V Reference Report

## L2 ASCDS Version : 7.6.10

Observation 155 - L2 Version 001  
Chandra X-Ray Center

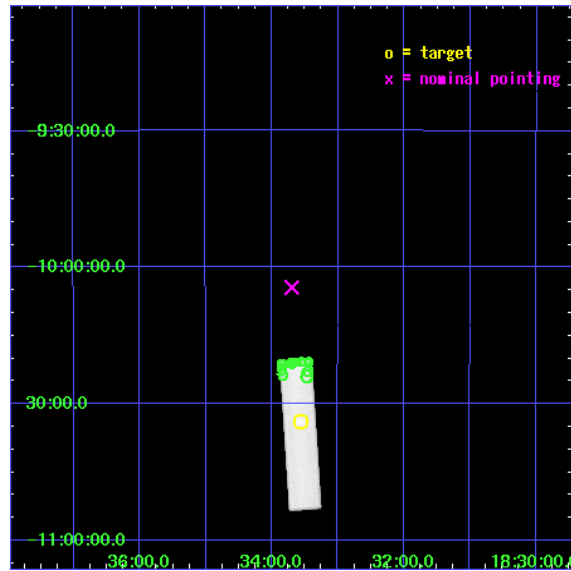
L2 Processing Date : Jun 6 2007

## Contents

<b>1</b>	<b>Front</b>	<b>2</b>
<b>2</b>	<b>OBI</b>	<b>3</b>
2.1	OBI . . . . .	3
2.1.1	Images . . . . .	3
2.1.2	Parameters . . . . .	4
2.1.3	Events . . . . .	4
2.2	Compared Parameters . . . . .	5
2.3	Aspect . . . . .	6
2.4	Star Slots . . . . .	9
2.4.1	Slot 3 . . . . .	9
2.4.2	Slot 4 . . . . .	10
2.4.3	Slot 5 . . . . .	11
2.4.4	Slot 6 . . . . .	12
2.4.5	Slot 7 . . . . .	13
2.5	FID Slots . . . . .	14
2.5.1	Slot 0 . . . . .	14
2.5.2	Slot 1 . . . . .	15
2.5.3	Slot 2 . . . . .	16
<b>3</b>	<b>Point Sources</b>	<b>17</b>
<b>A</b>	<b>Summary</b>	<b>18</b>
A.1	Status . . . . .	18
A.2	Comments . . . . .	18

# 1 Front

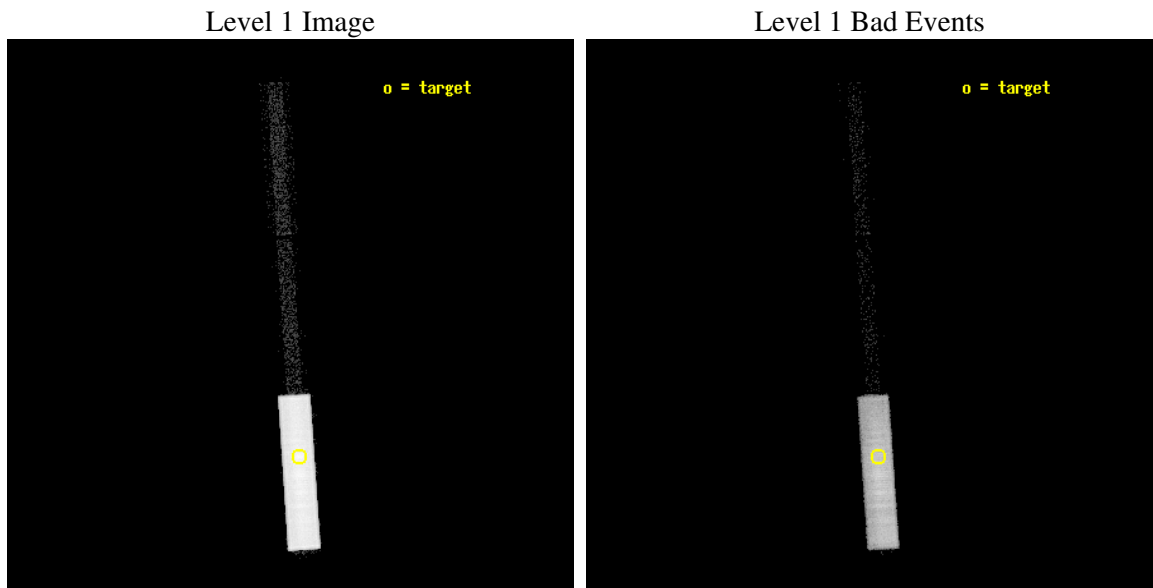
seq_num	590023
obs_id	155
title	HRC RESPONSE TO CONTINUUM SOURCE.
observer	Dr. CXC Calibration
object	G21.5-0.9 [HRC-S, Offsets=30,0,0 -Y MPC]
ra_targ	278.389583
dec_targ	-10.568528
ra_nom	278.42395306117
dec_nom	-10.074566496617
roll_nom	266.11918855117
revision	5
ontime	10441.9316421
livetime	10395.056521798
l2events	289860



## 2 OBI

### 2.1 OBI

#### 2.1.1 Images



### 2.1.2 Parameters

obi_num	0
ascdsver	7.6.10
caldbver	3.4.0
date	2007-06-06T13:04:17
revision	4

sched_exp_time	10300.000000
ontime	10441.9316421
l1events	444521

### 2.1.3 Events

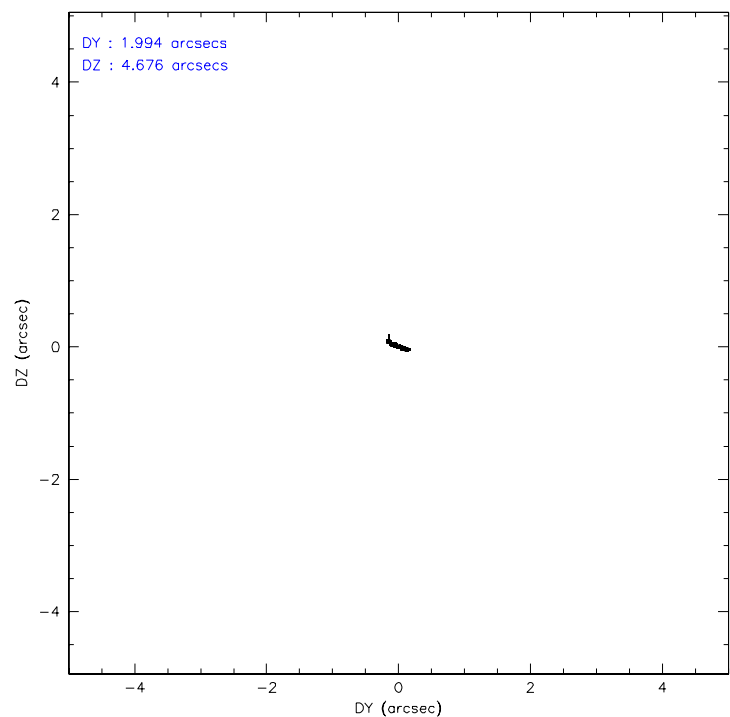
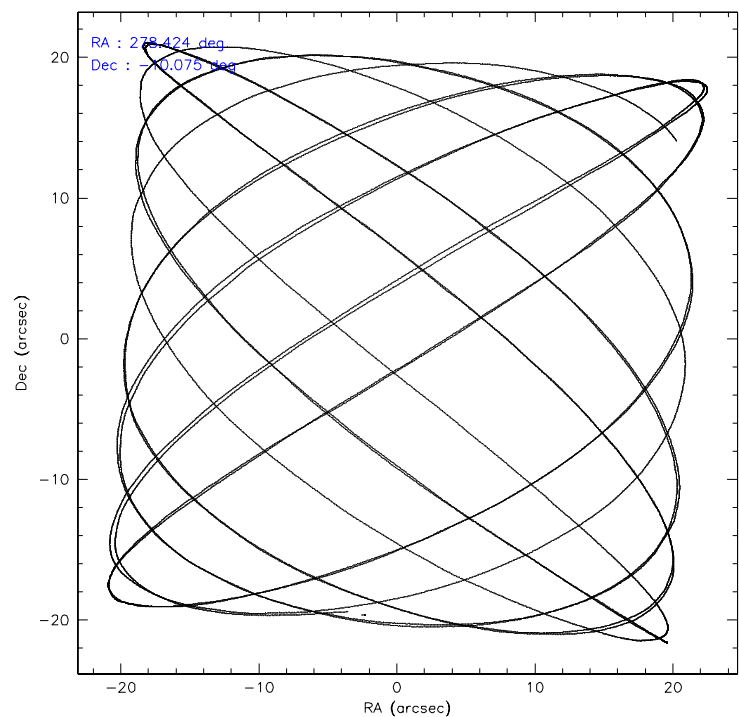
Level 1 Events

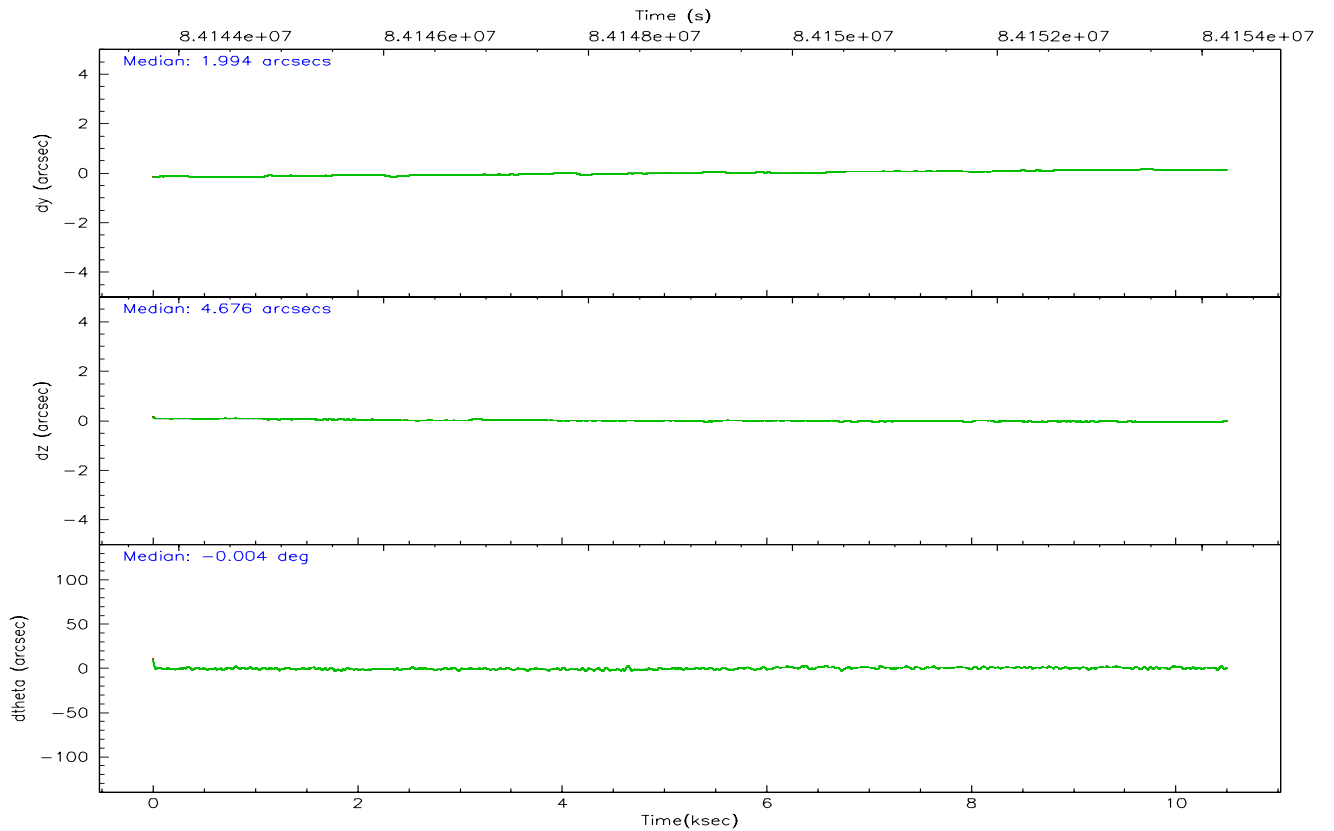
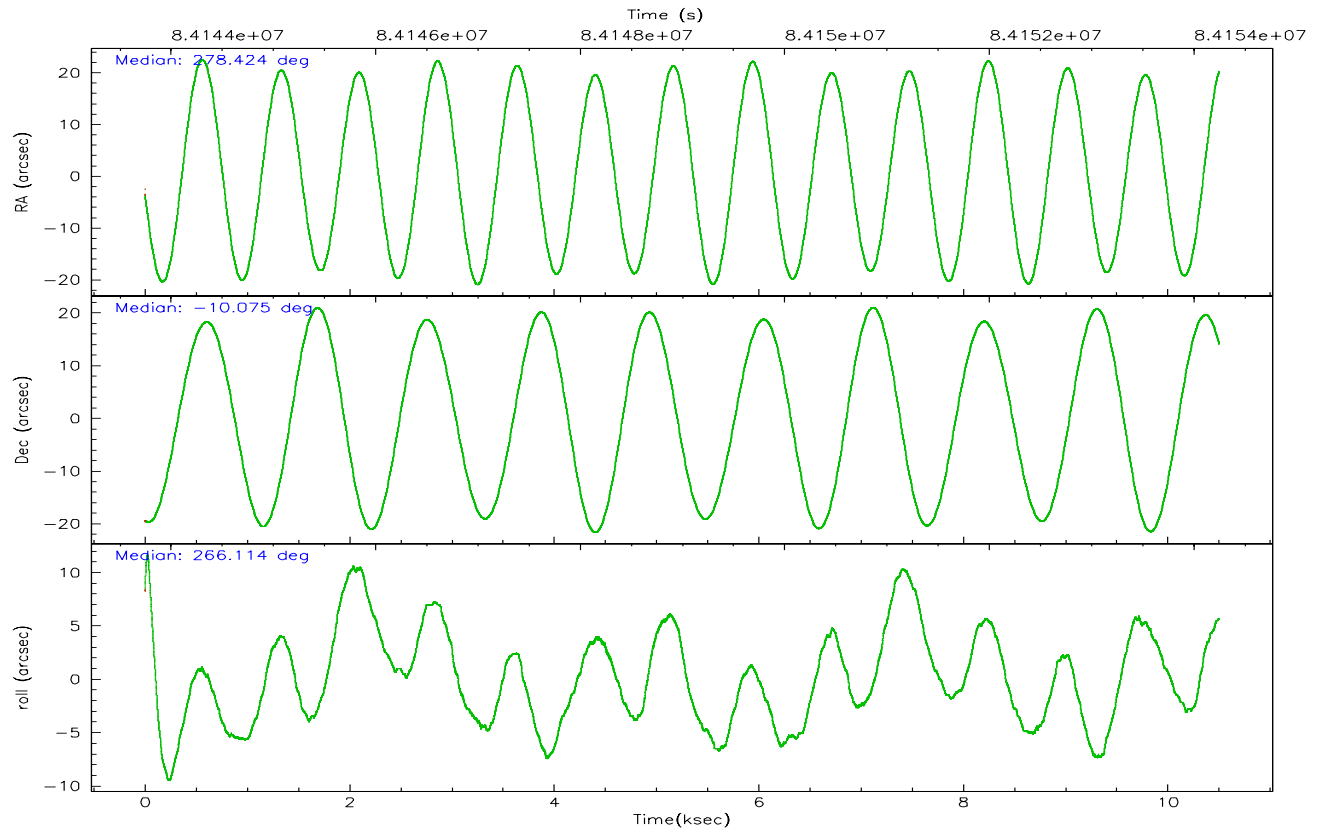
	<b>segment 1</b>	<b>segment 2</b>	<b>segment 3</b>
level 1 events	7506	1182	435833
rejected events	7506	1110	112843
rejected %	100%	93%	25%

## 2.2 Compared Parameters

Parameter	Planned	Actual	Parameter	Planned	Actual
Instrument	HRC	HRC	Obspar format version number	6	6
Detector	HRC-S	HRC-S	Obspar file type	PREDICTED	ACTUAL
Grating	NONE	NONE	Obspar update status	NONE	UPDATED
Data mode	OBSERVING	OBSERVING			
Observation mode	POINTING	POINTING			
Pointing RA	278.410078	278.4239530611711			
Pointing Dec	-10.049355	-10.07456649661694			
Pointing Roll	266.049433	266.119188551167			
SIM focus pos (mm)	-1.429586	-1.428180813131781			
SIM defocus (mm)	0.1037507710433287	0.1051558262725154			
SIM translation stage pos (mm)	250.455976	250.466033080201			
SIM translation stage offset (mm)	0	-0.01005468664627074			
Observation start time	84143945.184000	84143559.75121801			
Observation start date	2000-08-31T21:18:01	2000-08-31T21:12:39			
Observation end time	84154245.184000	84154415.014126			
Observation end date	2000-09-01T00:09:41	2000-09-01T00:13:35			

## 2.3 Aspect





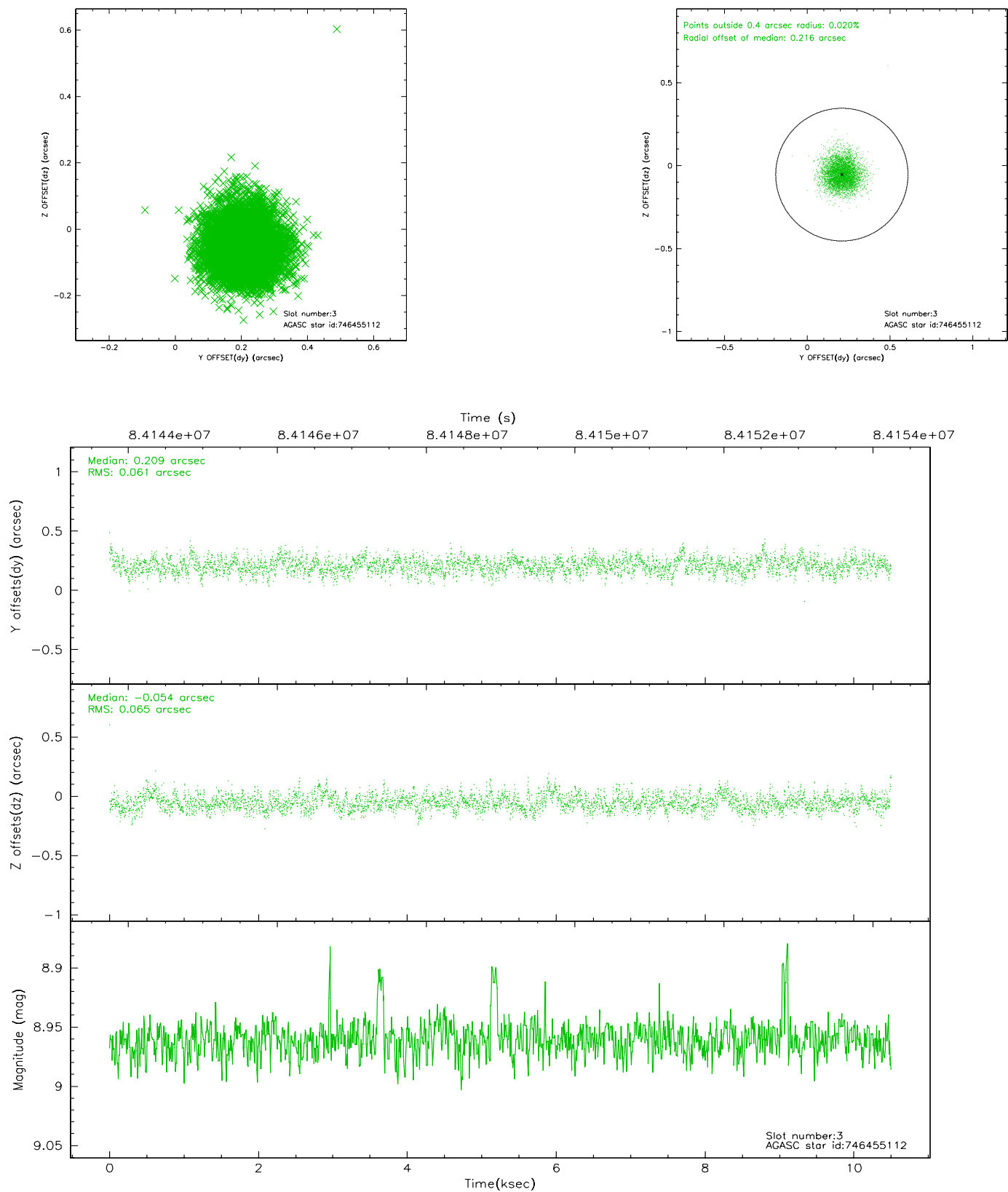
### Slot Statistics

slot	status	id	mag	n_pts	med_dy	med_dz	dr1	dr2	ra	dec	mean_y	mean_z
0	FID	HRC-S-1	6.97	2562	0.117	-0.148	0.007	0.012	0.000000	0.000000	-1156.02	-453.21
1	FID	HRC-S-3	7.00	2562	0.165	-0.054	0.011	0.018	0.000000	0.000000	-1159.16	576.24
2	FID	HRC-S-4	6.94	2562	0.106	-0.095	0.007	0.014	0.000000	0.000000	1241.76	579.20
3	GUIDE	746455112	8.96	5121	0.209	-0.054	0.094	0.152	278.266531	-10.703234	2383.69	-343.45
4	GUIDE	746458288	9.97	5121	-0.081	-0.028	0.123	0.202	278.591405	-9.671581	-1400.58	548.84
5	GUIDE	746460328	9.81	5121	-0.046	0.039	0.106	0.178	278.603974	-9.898096	-590.72	649.37
6	GUIDE	746461728	9.79	5119	0.082	0.154	0.120	0.196	278.986921	-10.530755	1589.90	2157.59
7	GUIDE	746460824	9.92	5120	-0.162	-0.112	0.117	0.199	277.863068	-9.489503	-1875.00	-2075.58

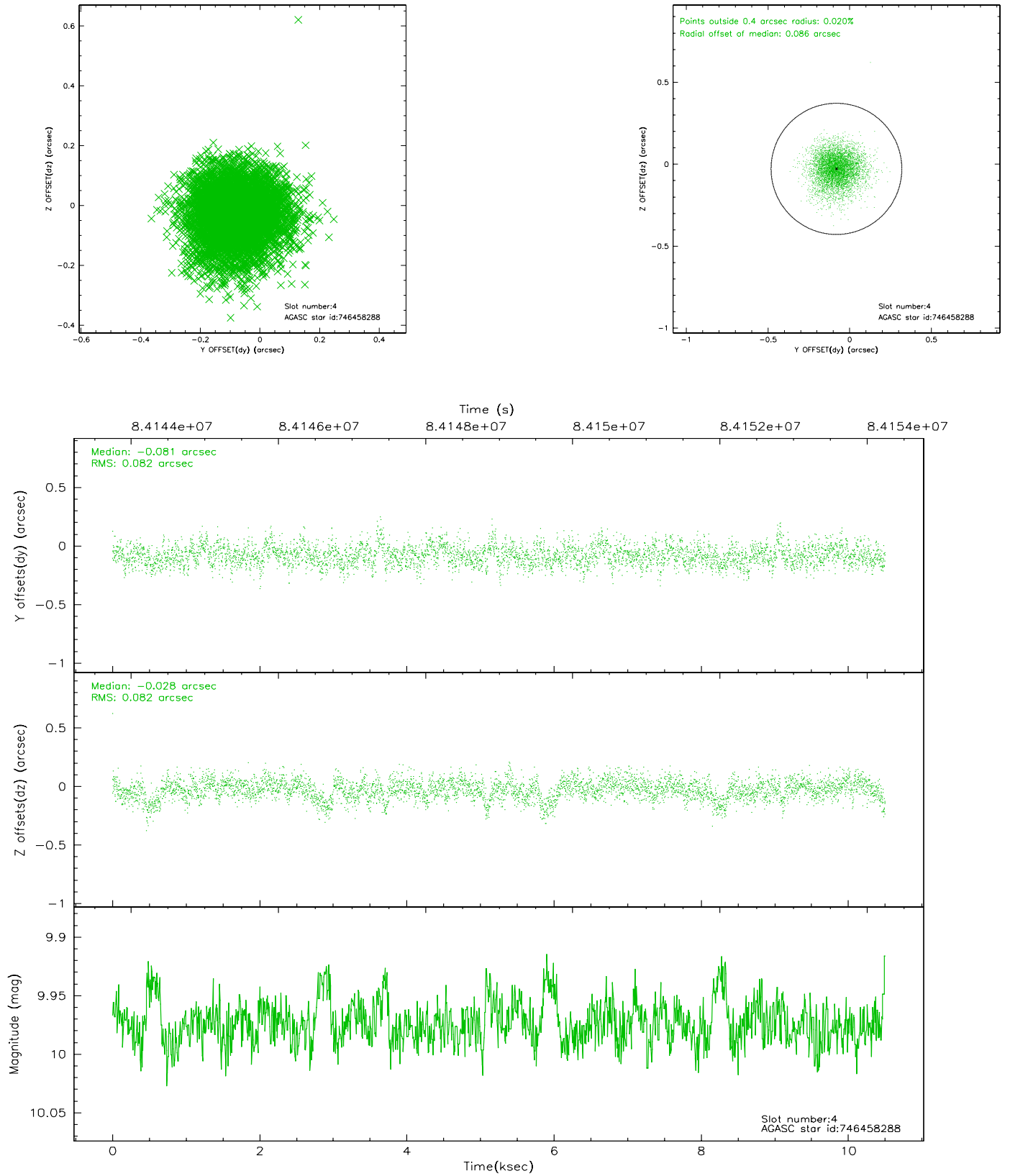


## 2.4 Star Slots

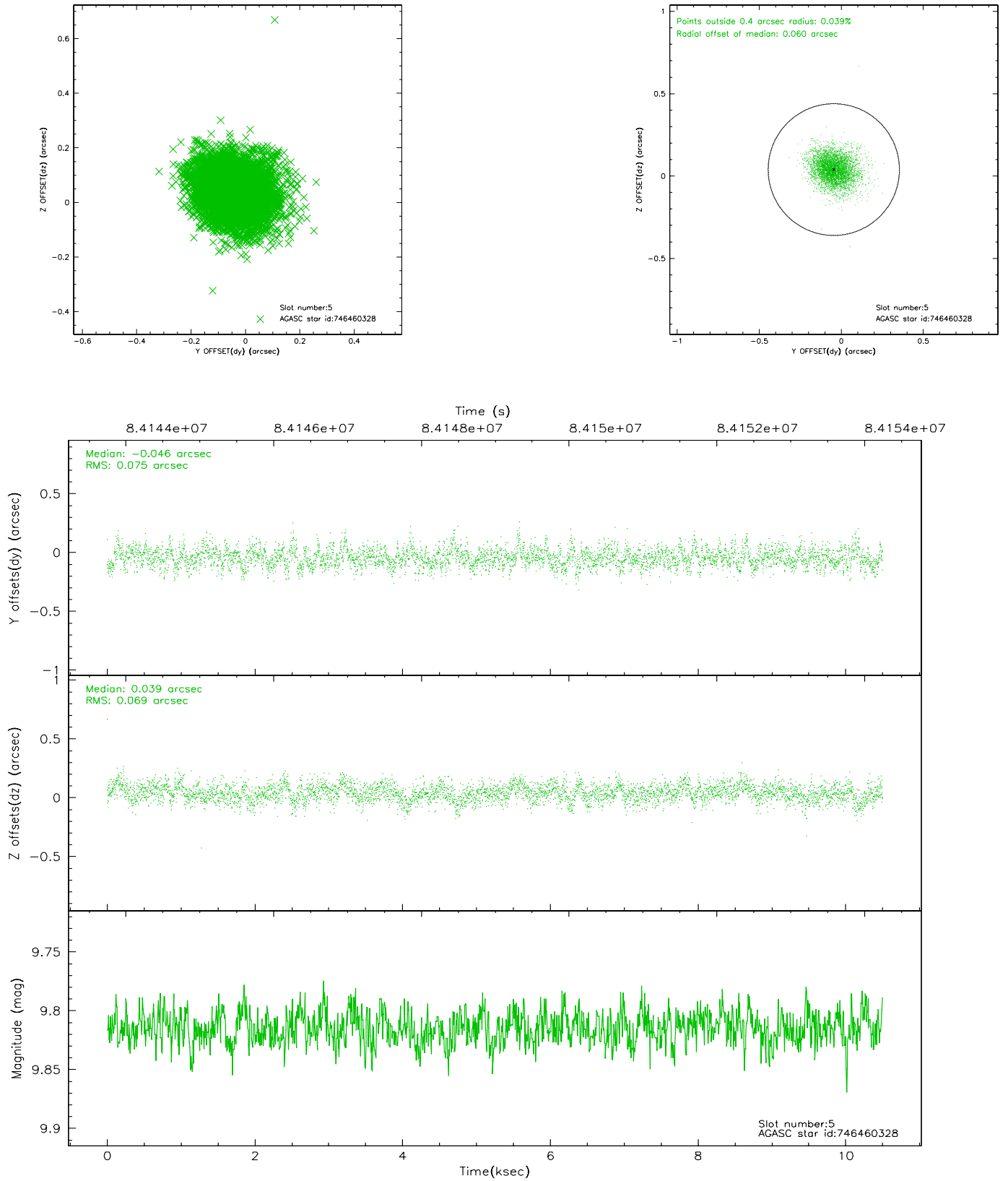
### 2.4.1 Slot 3



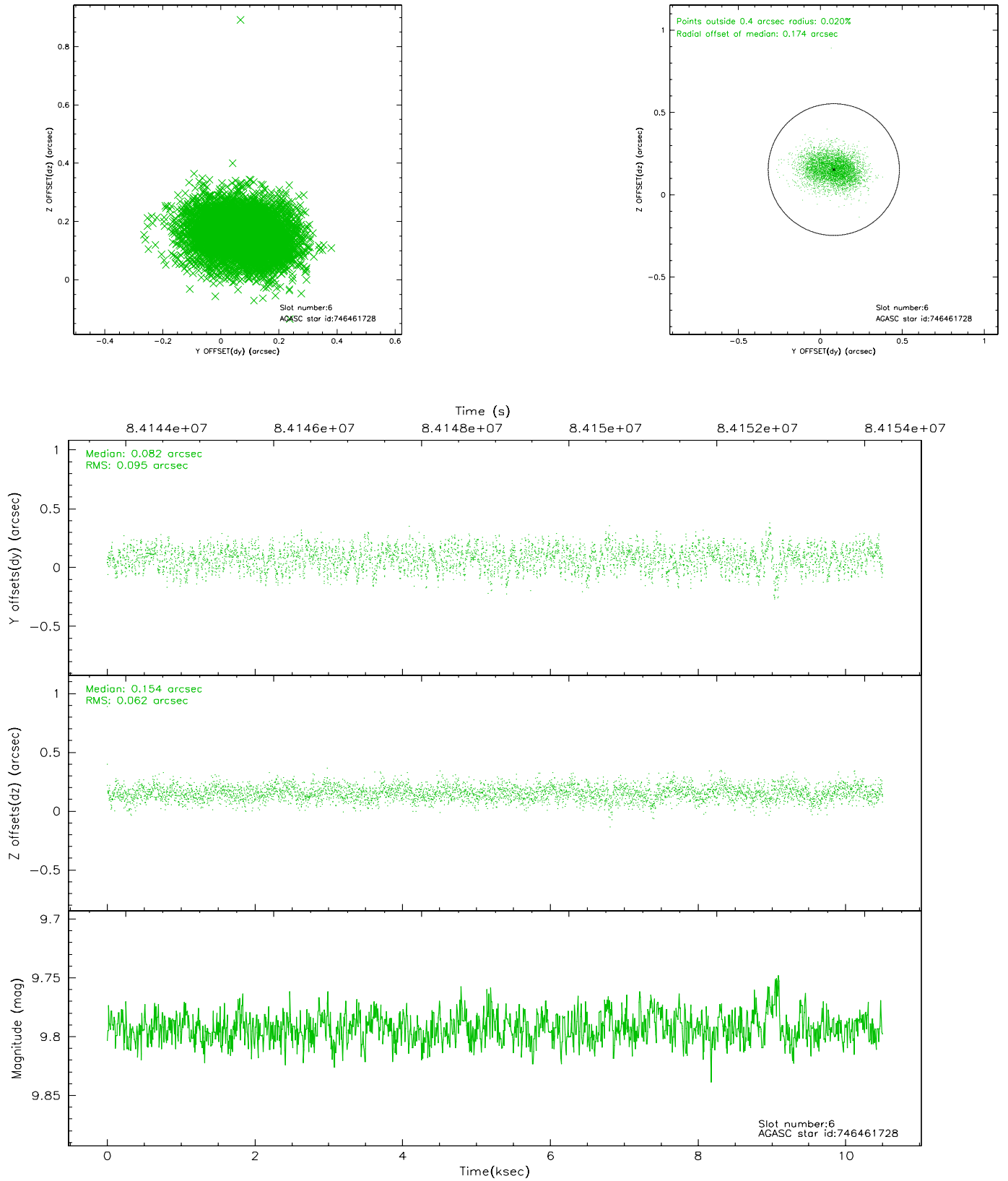
## 2.4.2 Slot 4



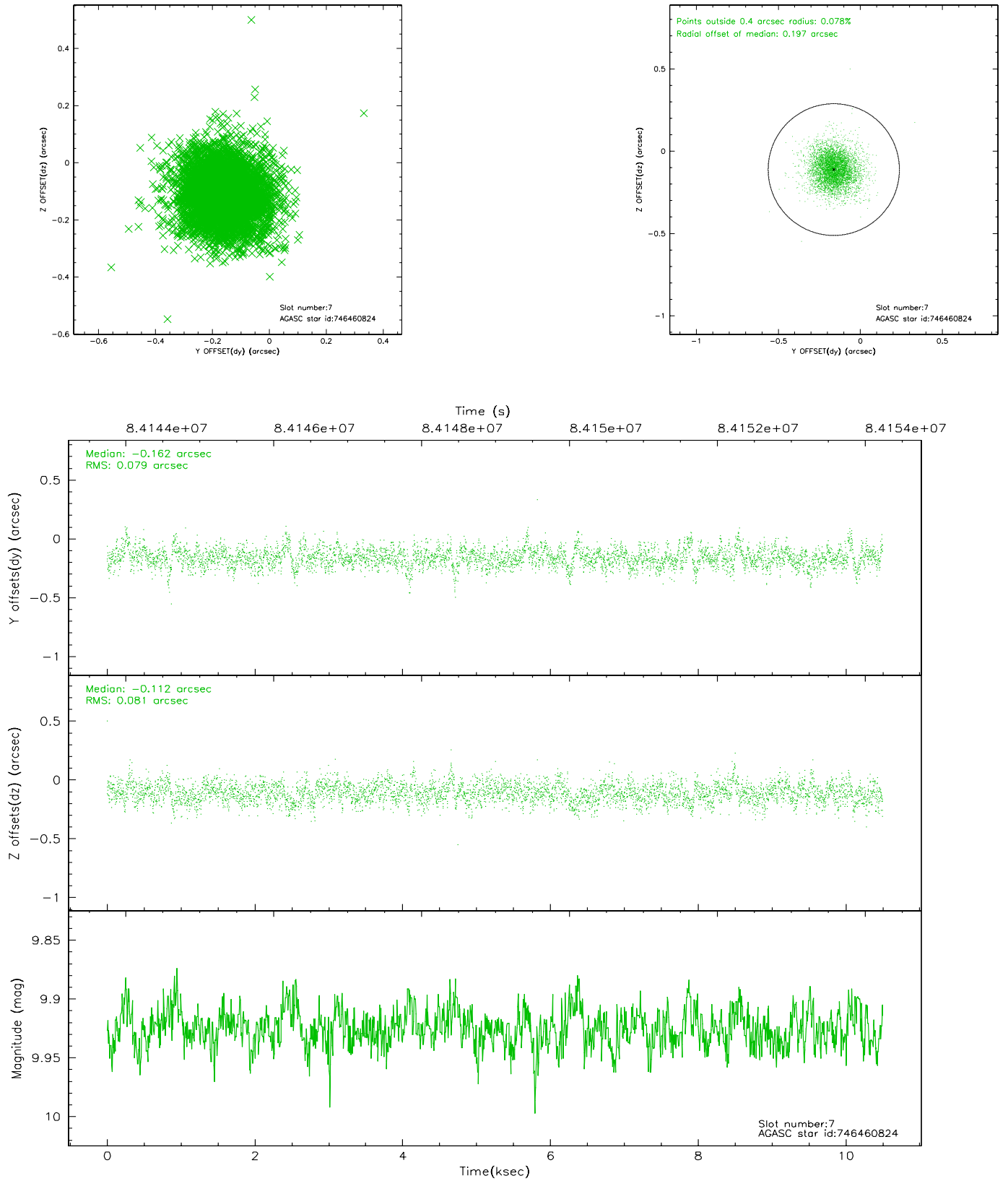
### 2.4.3 Slot 5



## 2.4.4 Slot 6

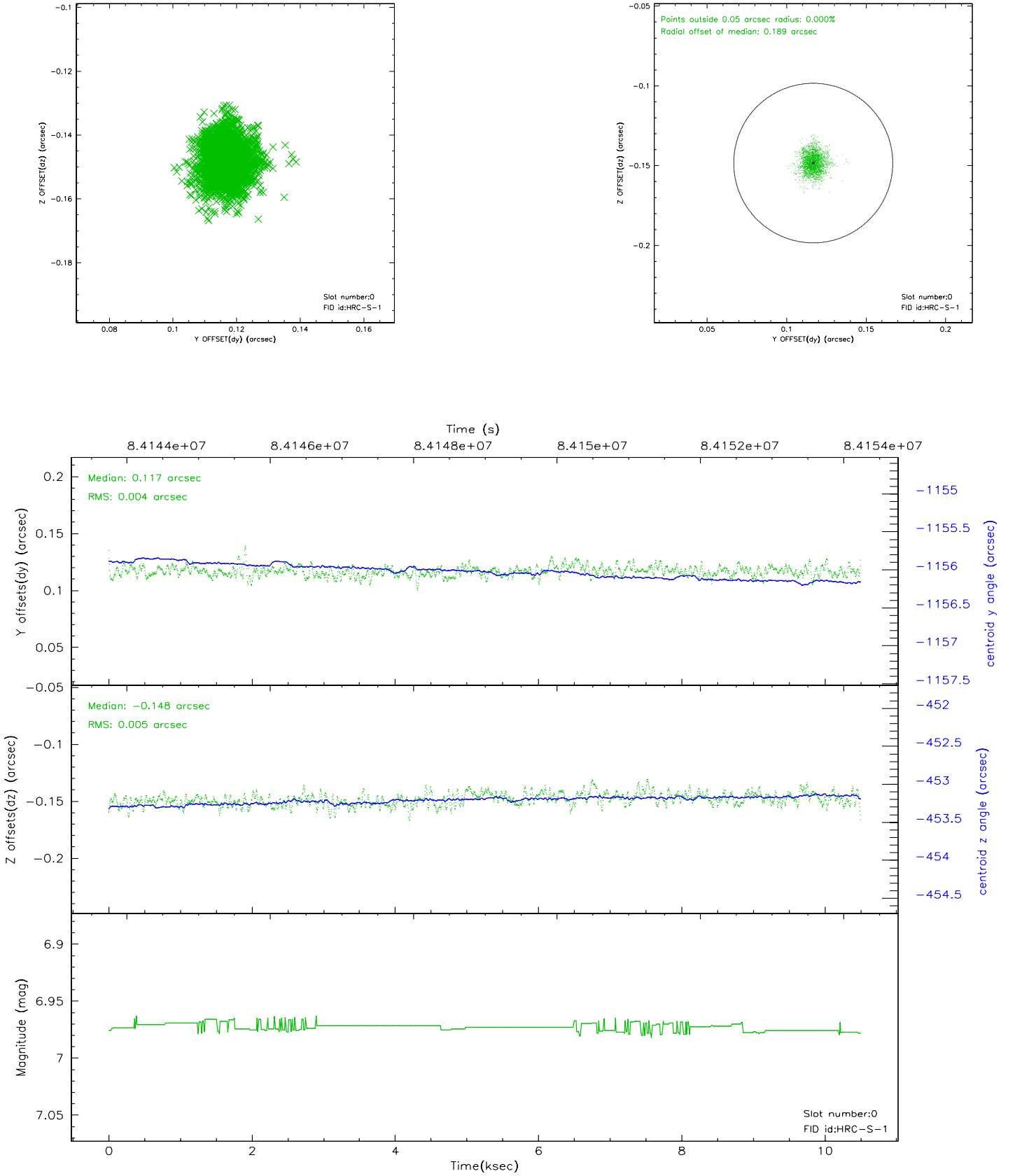


## 2.4.5 Slot 7

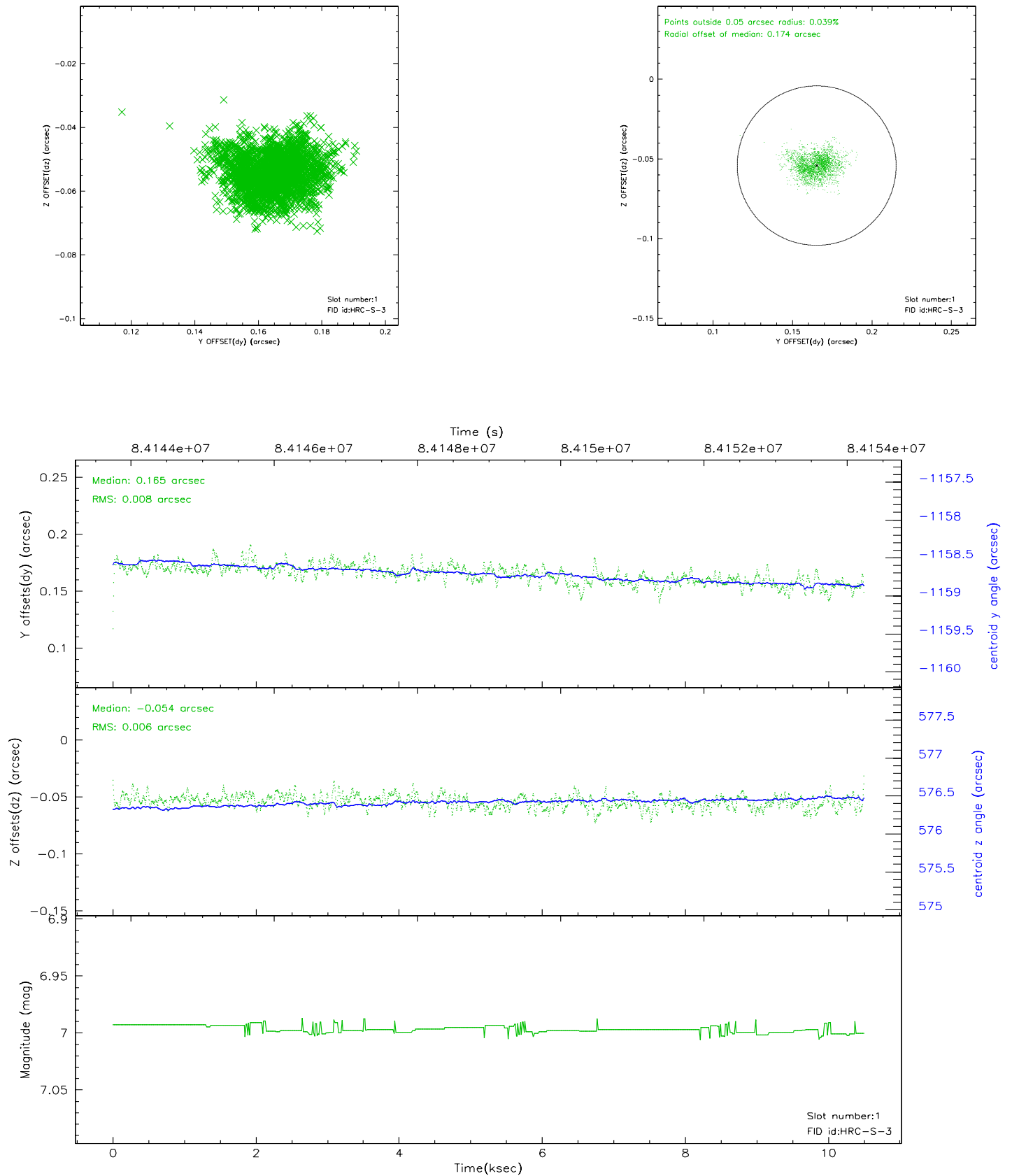


## 2.5 FID Slots

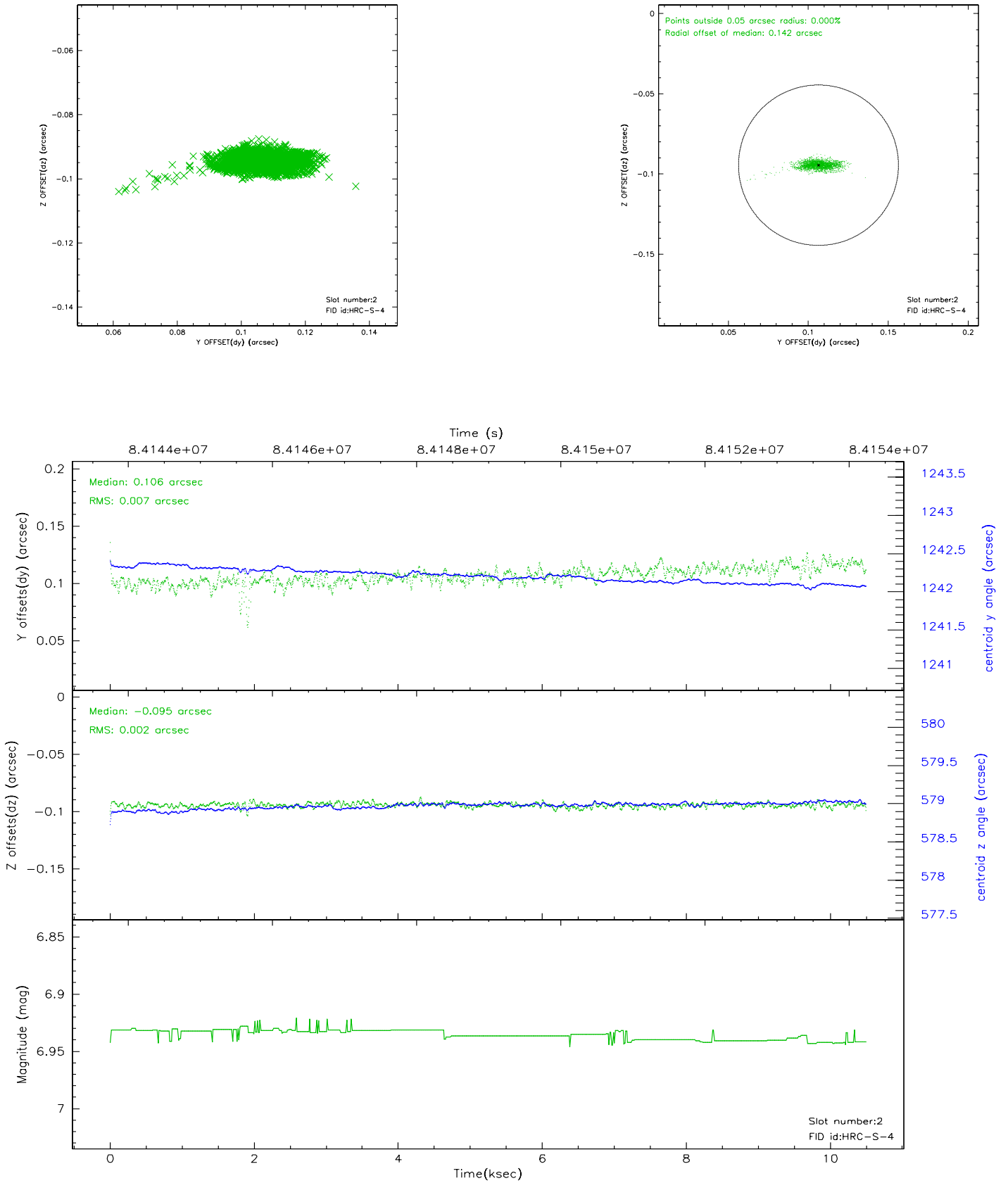
### 2.5.1 Slot 0



## 2.5.2 Slot 1

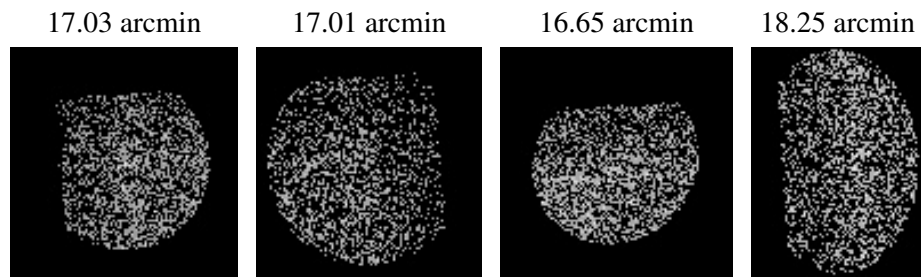


### 2.5.3 Slot 2





### 3 Point Sources



## A Summary

### A.1 Status

V&V Scientist	Jen Lauer
V&V Date (YYYY-MM-DD)	2007.06.06
V&V Edition	1
V&V Disposition and Status	OK
V&V Charge Time	10.497

### A.2 Comments

Monitor constraint violated: obsid 152 start time is 197 days after the start time of obsid 150, instead of the 80.0 - 115.0 required.

CDO: All are OK. Monitor constraint was too tight. Release data. Do not repeat observation.