

V&V Reference Report

L2 ASCDS Version : 7.6.9

Observation 1545 - L2 Version 001
Chandra X-Ray Center

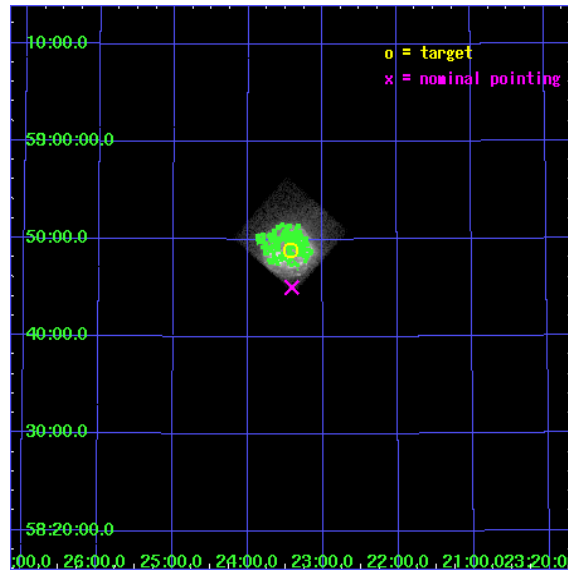
L2 Processing Date : Nov 2 2006

Contents

1	Front	2
2	OBI	3
2.1	OBI	3
2.1.1	Images	3
2.1.2	Bias	3
2.1.3	Parameters	4
2.1.4	Events	4
2.2	Compared Parameters	5
2.3	Aspect	6
2.4	Star Slots	9
2.4.1	Slot 3	9
2.4.2	Slot 4	10
2.4.3	Slot 5	11
2.4.4	Slot 6	12
2.4.5	Slot 7	13
2.5	FID Slots	14
2.5.1	Slot 0	14
2.5.2	Slot 1	15
2.5.3	Slot 2	16
3	Point Sources	17
A	Summary	18
A.1	Status	18
A.2	Comments	18

1 Front

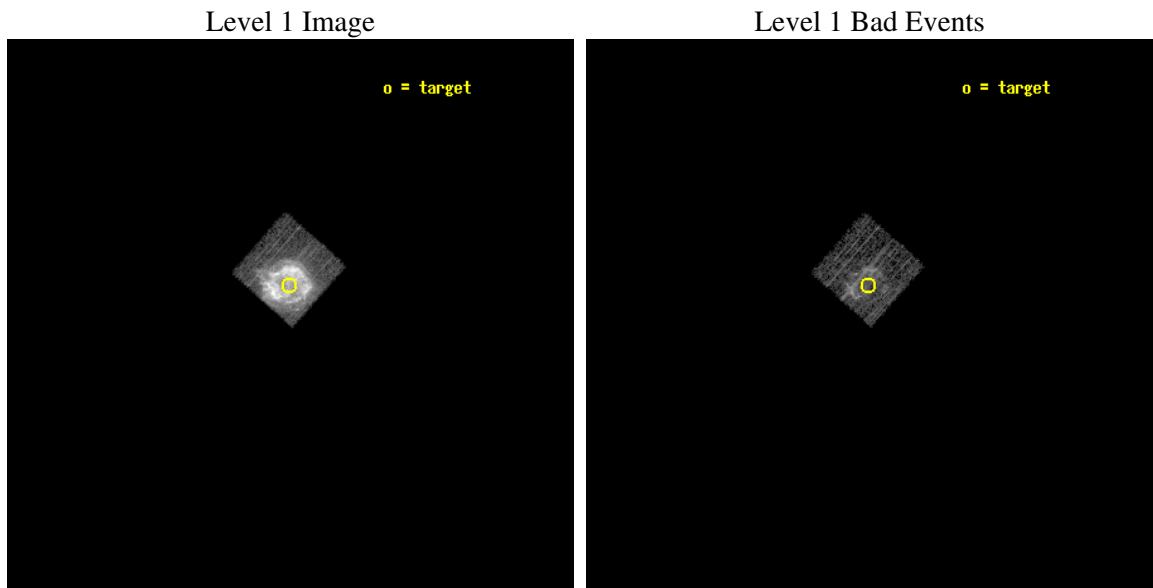
seq_num	590154
obs_id	1545
title	CALIBRATION OBSERVATIONS OF THE STANDARD CANDLE CAS A
observer	Dr. CXC Calibration
object	CAS A [Chip I3, T=120, Offsets=-2,2,0]
dtcycle	0
cycle	P
ra_targ	350.8575
dec_targ	58.814833
ra_nom	350.85338799855
dec_nom	58.751365571615
roll_nom	311.49895170442
revision	2
ontime	1542.6867929101
livetime	1523.1523638438
ontime0	2140.8000019938
ontime1	2140.8000019938
ontime2	2140.8000019938
ontime3	1542.6867929101
ontime6	2140.7943956256
ontime7	2140.8000019938
l2events	337066



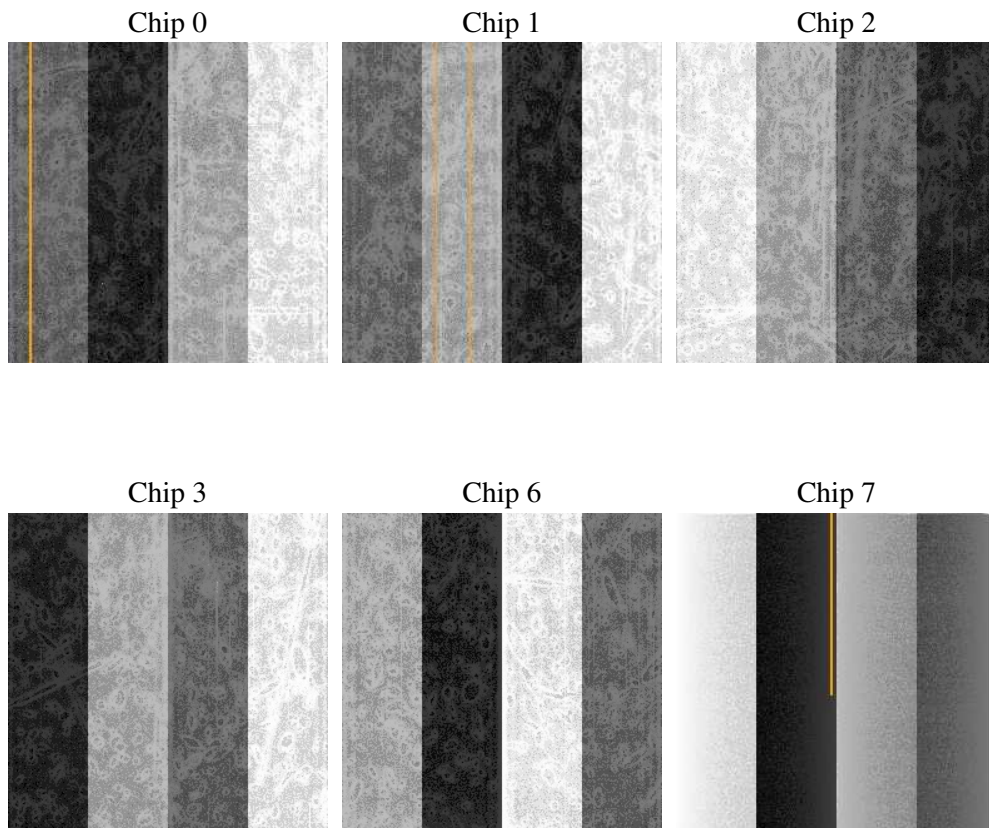
2 OBI

2.1 OBI

2.1.1 Images



2.1.2 Bias



2.1.3 Parameters

obi_num	0
ascdsver	7.6.9
caldsver	3.2.3
date	2006-11-02T22:01:19
revision	2

sched_exp_time	2198.332000
ontime	1545.9632665366
ontime0	2145.5407322645
ontime1	2145.5407322645
ontime2	2145.5407322645
ontime3	1545.9632665366
ontime6	2148.781752333
ontime7	2145.5407322645
l1events	405872

2.1.4 Events

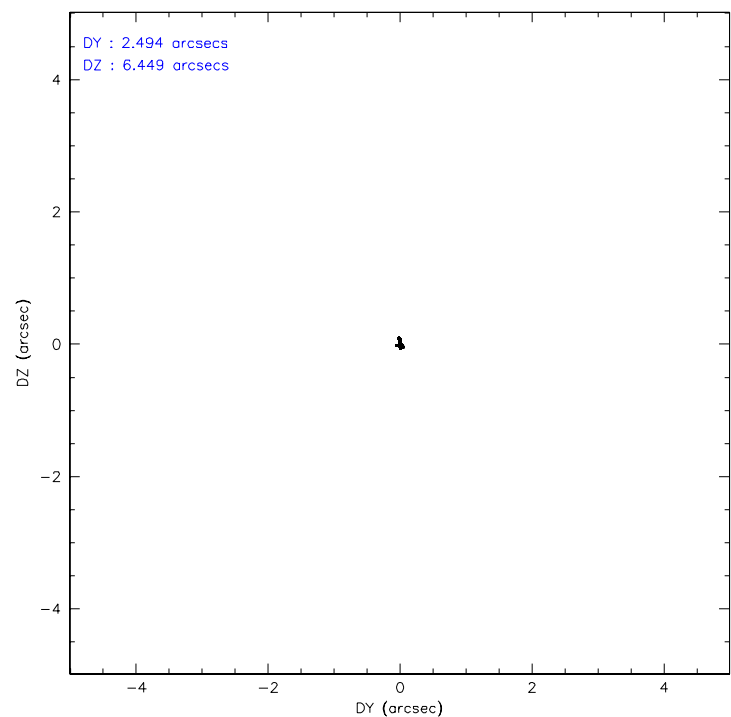
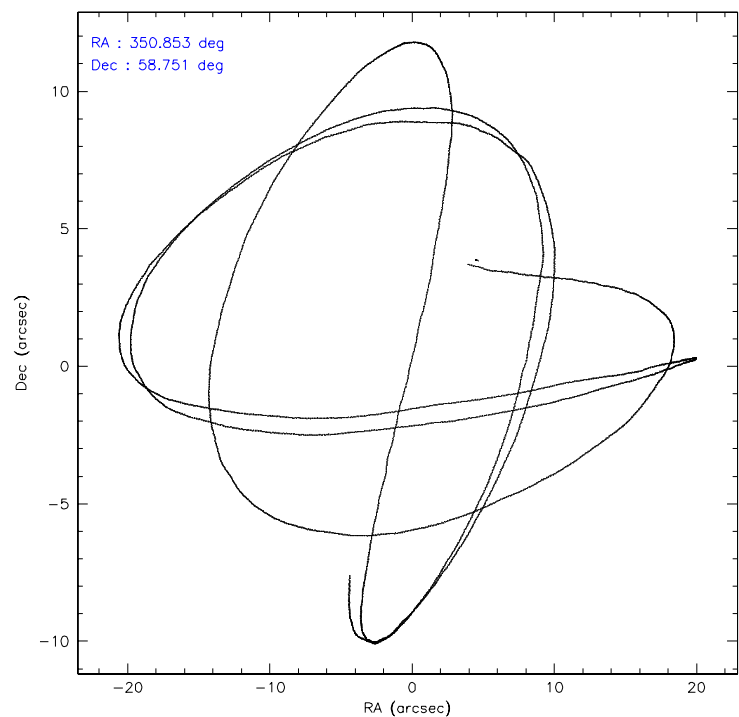
	ccd 0	ccd 1	ccd 2	ccd 3	ccd 6	ccd 7
level 1 events	0	0	0	405872	0	0
rejected events	0	0	0	55387	0	0
rejected %	0%	0%	0%	13%	0%	0%

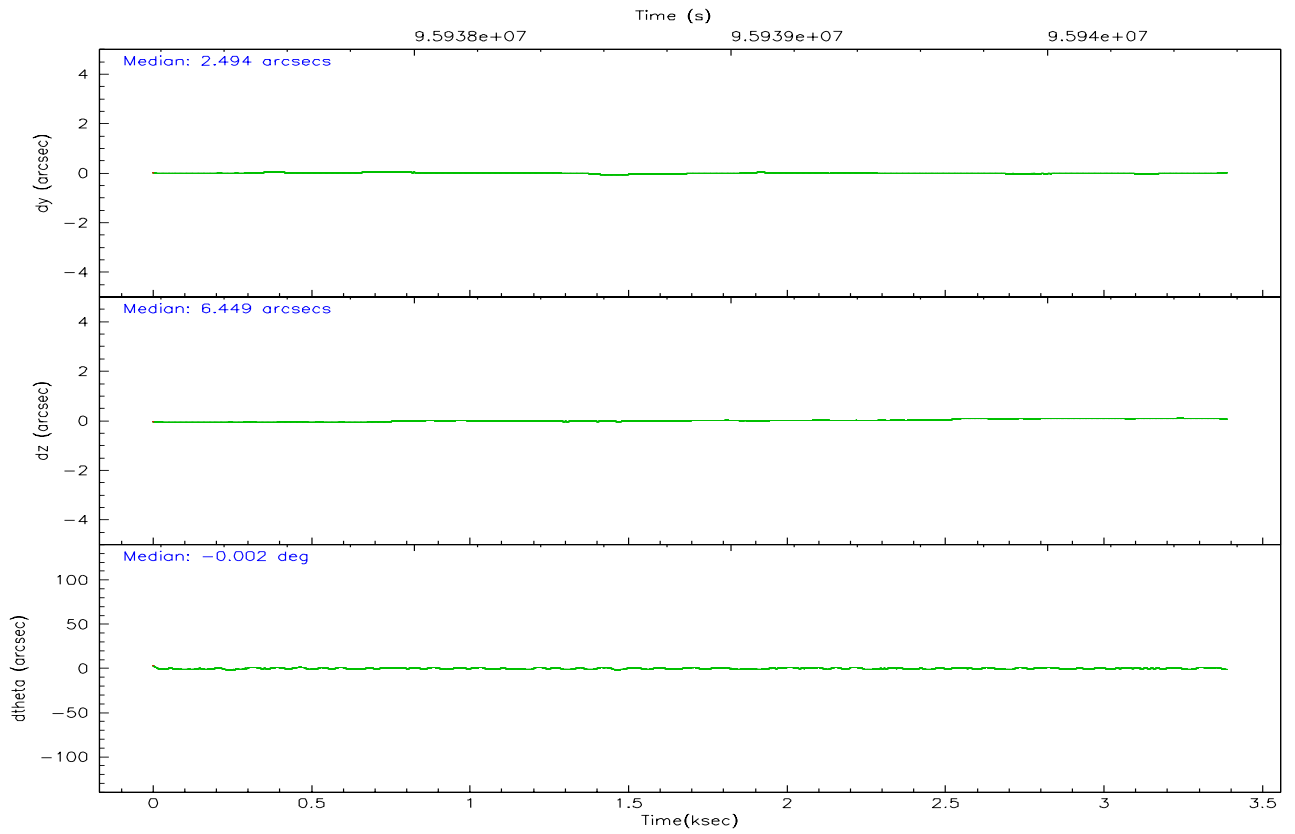
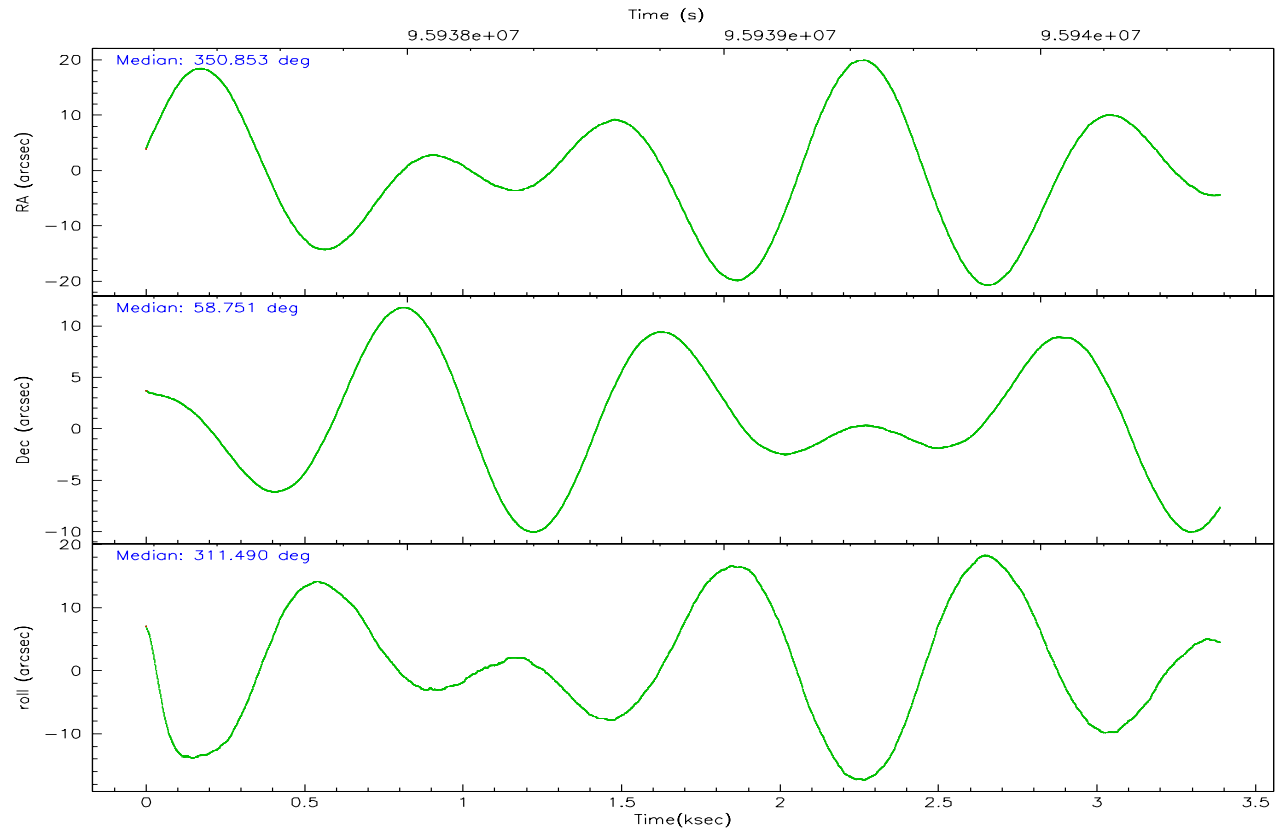
	ccd 0	ccd 1	ccd 2	ccd 3	ccd 6	ccd 7
grade 0 events	0	0	0	284691	0	0
	0%	0%	0%	70%	0%	0%
grade 1 events	0	0	0	4643	0	0
	0%	0%	0%	1%	0%	0%
grade 2 events	0	0	0	36556	0	0
	0%	0%	0%	9%	0%	0%
grade 3 events	0	0	0	11113	0	0
	0%	0%	0%	2%	0%	0%
grade 4 events	0	0	0	11264	0	0
	0%	0%	0%	2%	0%	0%
grade 5 events	0	0	0	2886	0	0
	0%	0%	0%	0%	0%	0%
grade 6 events	0	0	0	7627	0	0
	0%	0%	0%	1%	0%	0%
grade 7 events	0	0	0	47092	0	0
	0%	0%	0%	11%	0%	0%

2.2 Compared Parameters

Parameter	Planned	Actual	Parameter	Planned	Actual
Instrument	ACIS	ACIS	Obspar format version number	6	6
Detector	ACIS-012367	ACIS-012367	Obspar file type	PREDICTED	ACTUAL
Grating	NONE	NONE	Obspar update status	NONE	UPDATED
Data mode	FAINT	FAINT	Number of optional ACIS chips dropped	0	0
Observation mode	POINTING	POINTING	On-chip summing requested	N	N
Pointing RA	350.802856	350.8533879985499	Subarray requested	NONE	NONE
Pointing Dec	58.760204	58.75136557161453	Alternating exposures requested	N	N
Pointing Roll	311.333441	311.498951704422	Primary exposure time	0.000000	3.2
Window start time	94694464.184000	94694464.184000			
Window stop time	97286464.184000	97286464.184000			
SIM focus pos (mm)	-0.782348	-0.7809083437167272			
SIM defocus (mm)	0	0.001439871863259334			
SIM translation stage pos (mm)	-233.592463	-233.5874344608287			
SIM translation stage offset (mm)	0	-0.005018542100998502			
Observation start time	95938367.184000	95936910.386429			
Observation start date	2001-01-15T09:31:43	2001-01-15T09:08:30			
Observation end time	95940565.184000	95940879.699081			
Observation end date	2001-01-15T10:08:21	2001-01-15T10:14:39			
Read mode	TIMED	TIMED			

2.3 Aspect



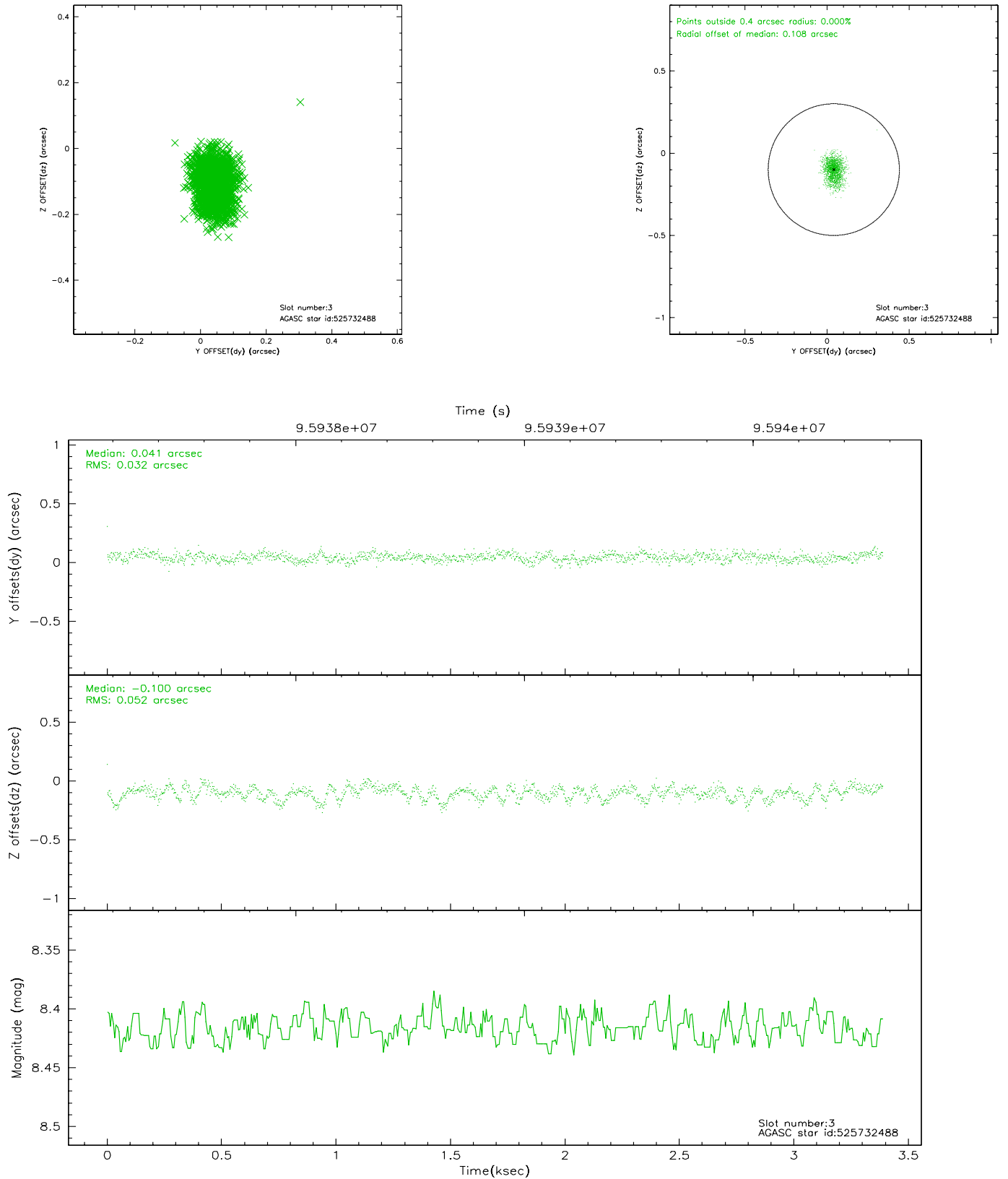


Slot Statistics

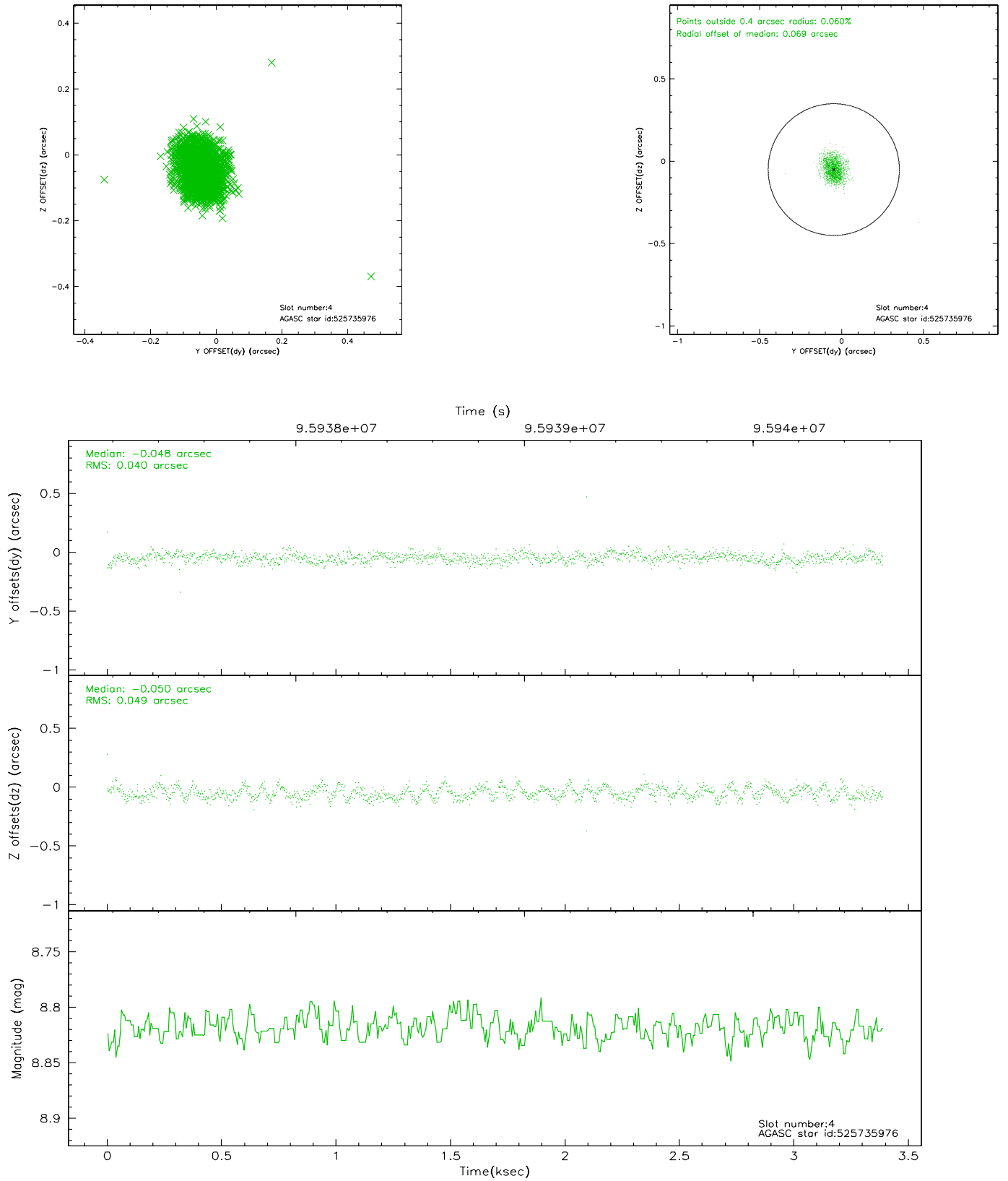
slot	status	id	mag	n_pts	med_dy	med_dz	dr1	dr2	ra	dec	mean_y	mean_z
0	FID	ACIS-I-2	7.16	827	-0.026	-0.033	0.009	0.016	0.000000	0.000000	-756.89	-836.24
1	FID	ACIS-I-4	7.18	827	-0.055	0.033	0.006	0.011	0.000000	0.000000	2156.30	1069.07
2	FID	ACIS-I-5	7.23	827	-0.020	0.069	0.008	0.014	0.000000	0.000000	-1808.30	1069.08
3	GUIDE	525732488	8.42	1654	0.041	-0.100	0.064	0.108	350.087090	58.516915	-235.67	-1583.59
4	GUIDE	525735976	8.82	1654	-0.048	-0.050	0.066	0.104	350.142956	58.277622	475.60	-2081.52
5	GUIDE	525732232	9.11	1654	0.055	0.068	0.081	0.132	351.669550	58.757012	1070.36	1214.14
6	GUIDE	525736400	9.07	1654	0.001	0.130	0.068	0.113	350.974563	59.175145	-911.84	1226.06
7	GUIDE	525732528	9.38	1652	-0.055	-0.040	0.100	0.154	351.607241	59.298932	-487.04	2398.18

2.4 Star Slots

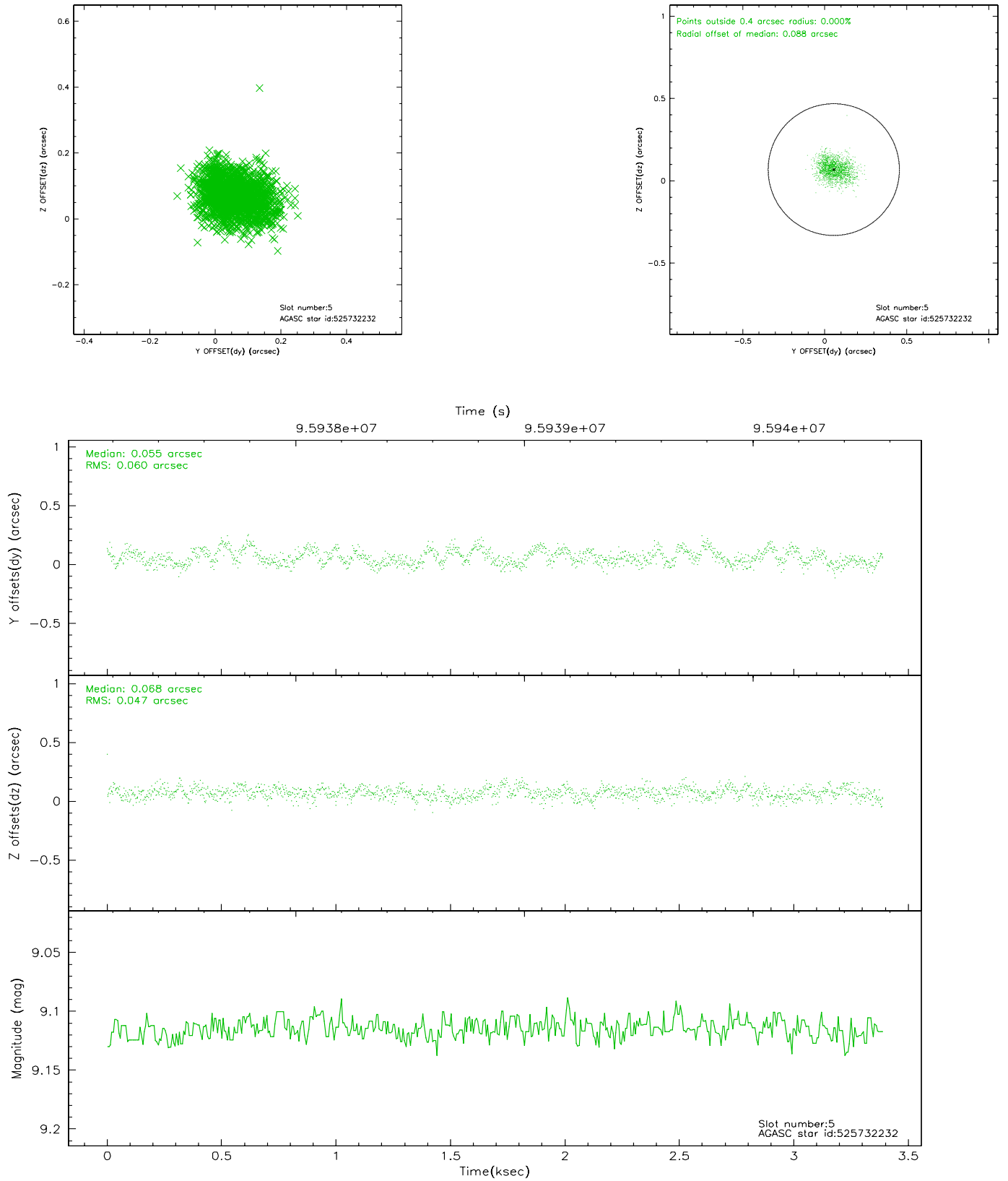
2.4.1 Slot 3



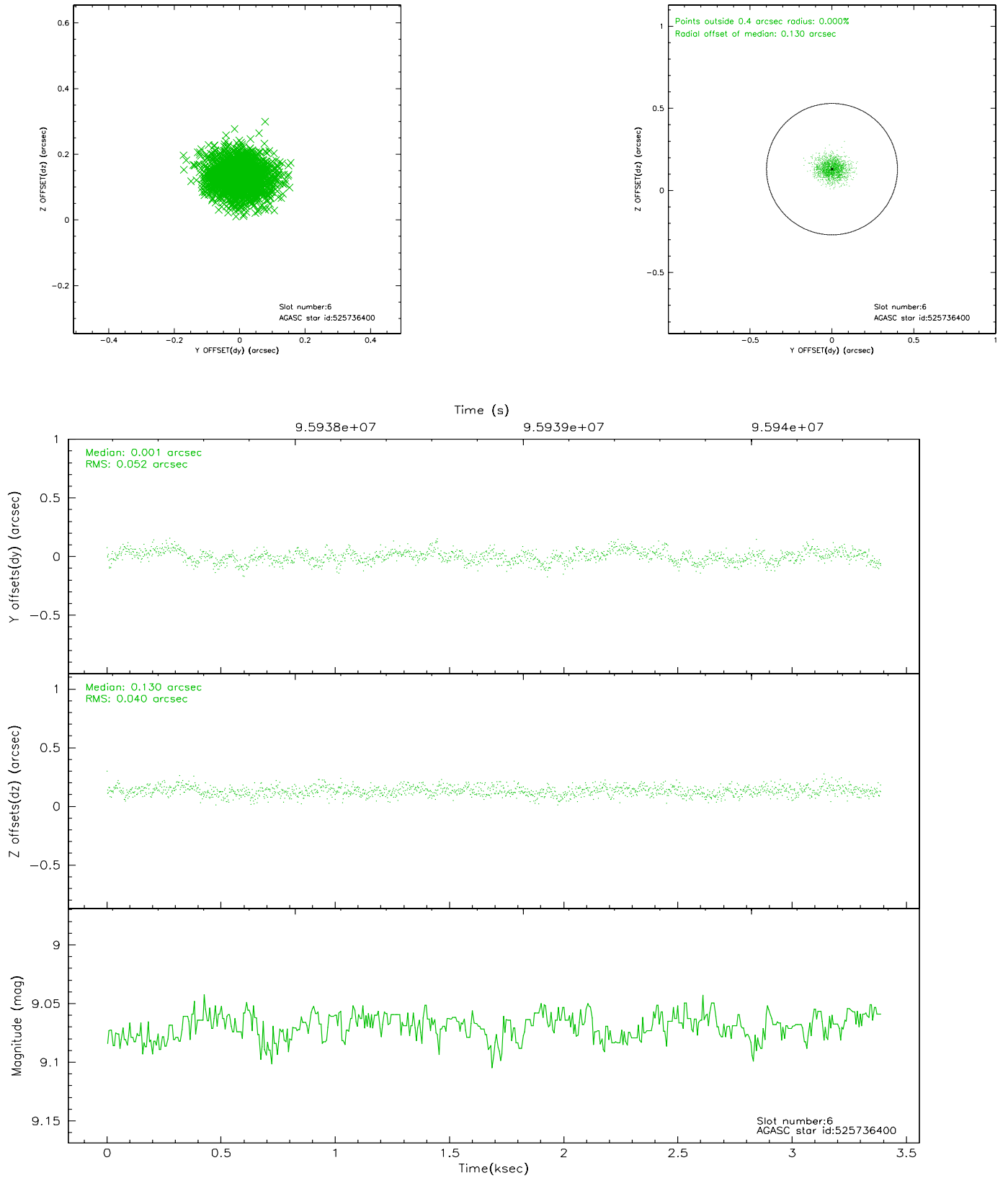
2.4.2 Slot 4



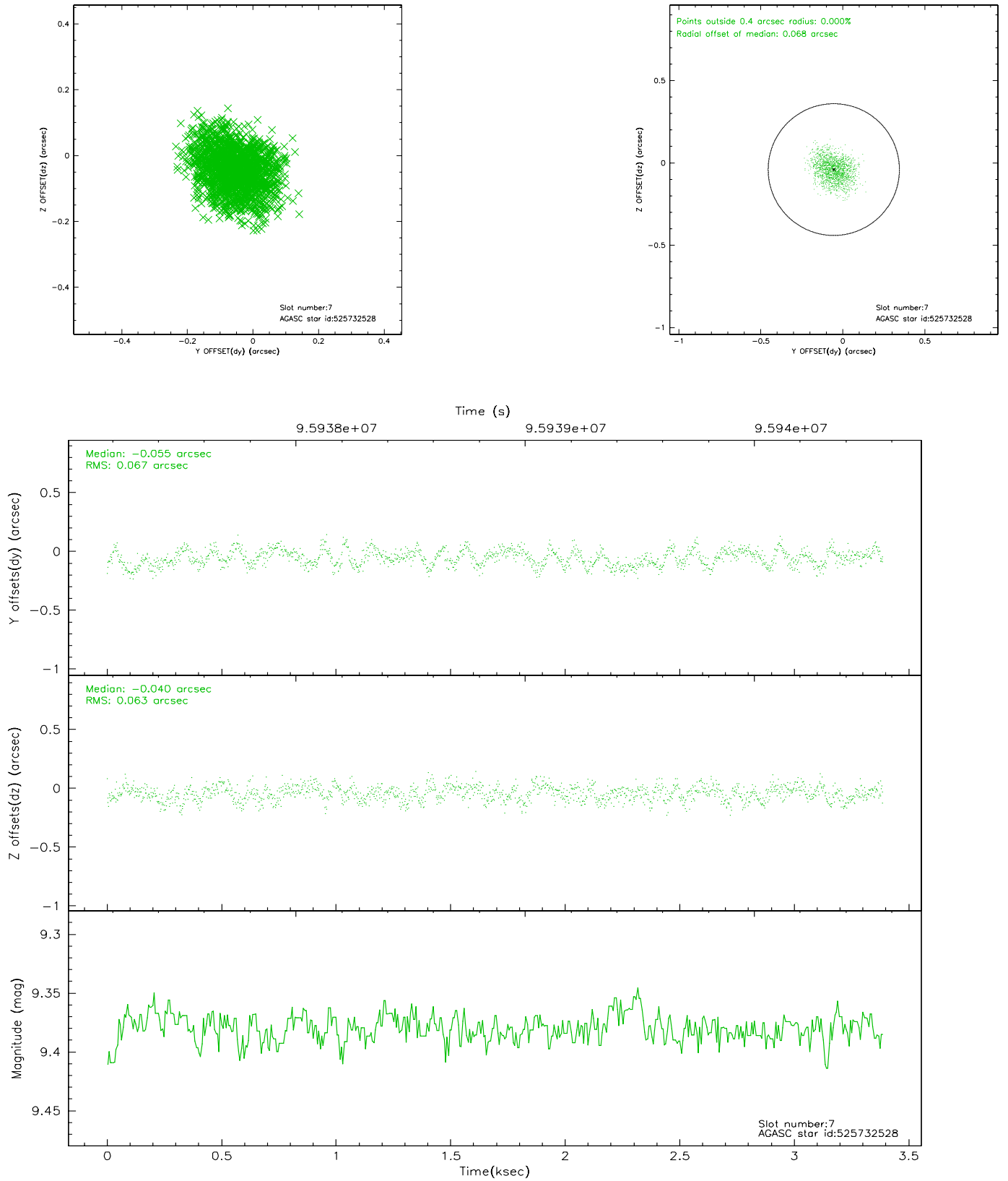
2.4.3 Slot 5



2.4.4 Slot 6

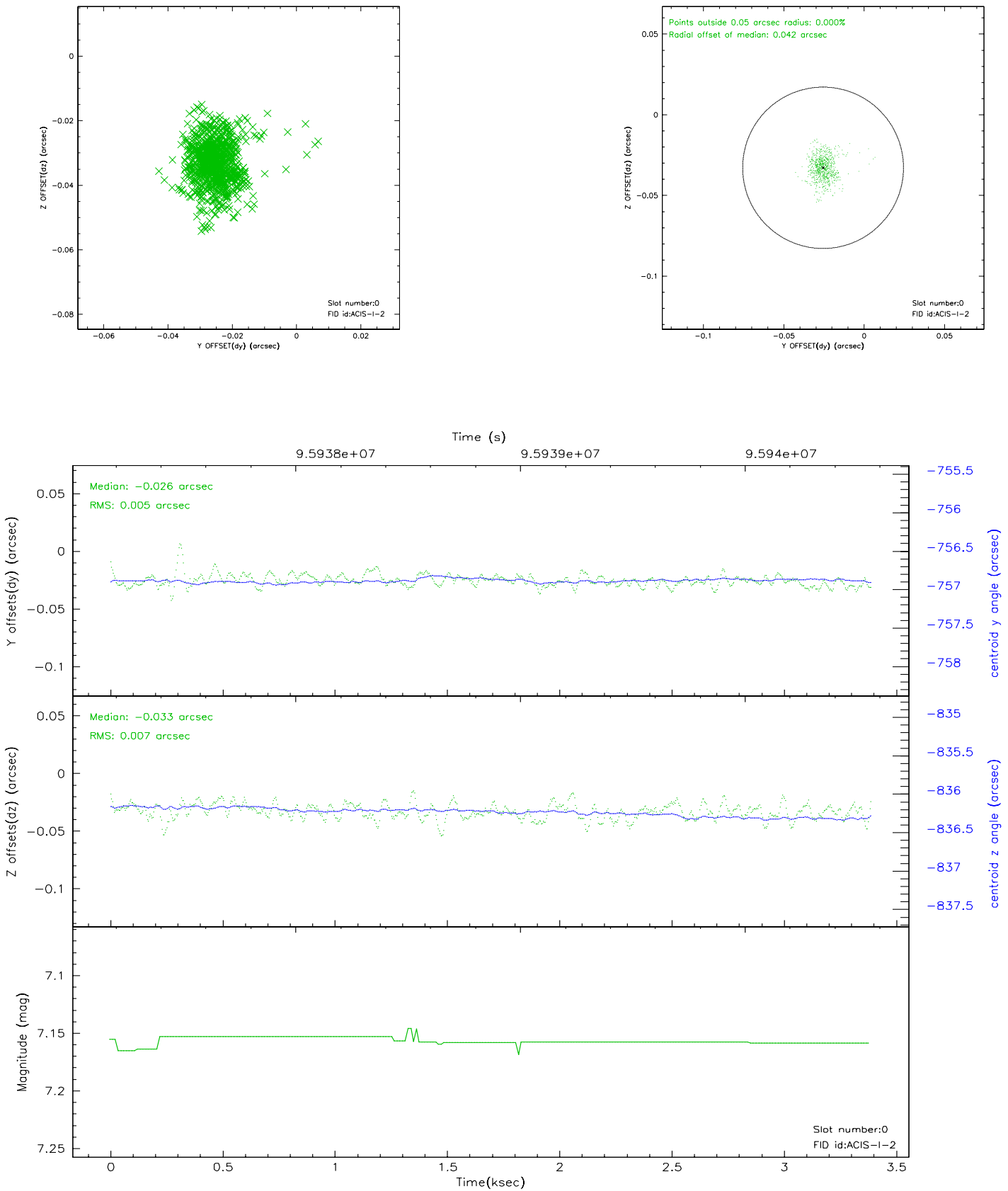


2.4.5 Slot 7

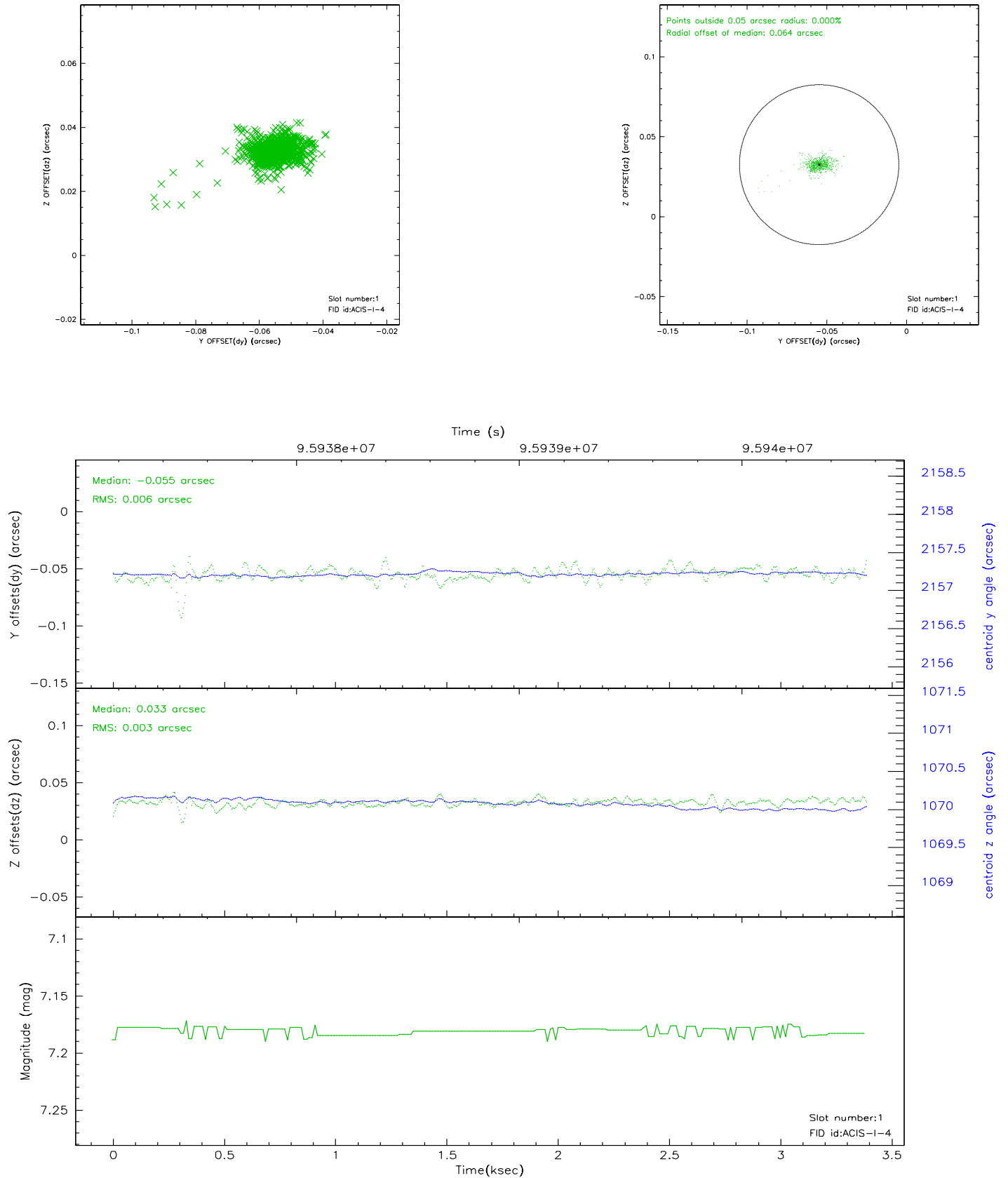


2.5 FID Slots

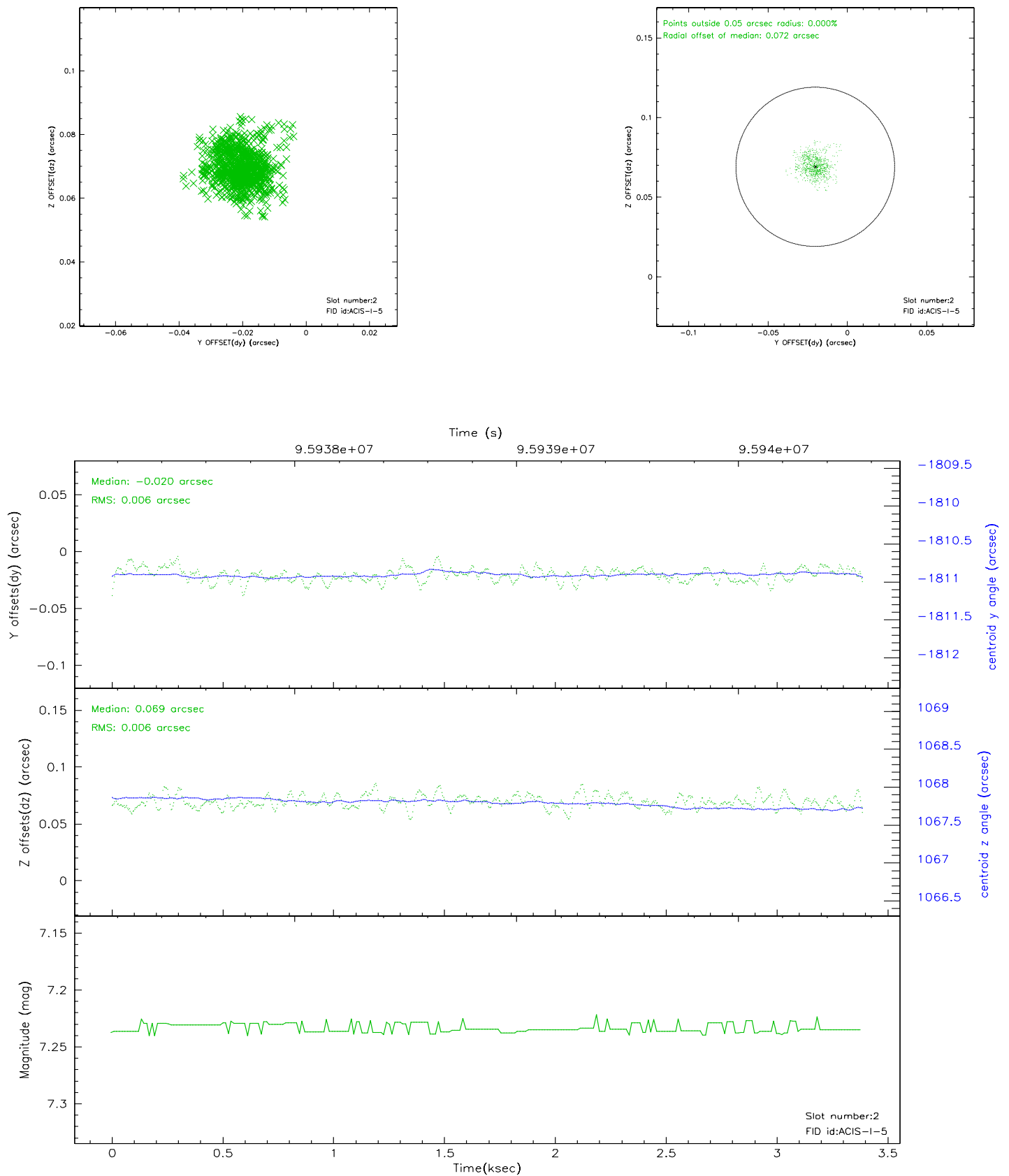
2.5.1 Slot 0



2.5.2 Slot 1



2.5.3 Slot 2



3 Point Sources

A Summary

A.1 Status

V&V Scientist	Jen Lauer
V&V Date (YYYY-MM-DD)	2006.11.06
V&V Edition	1
V&V Disposition and Status	OK
V&V Charge Time	1.551

A.2 Comments

Charge time:

Charge time for this ObsId remains at previous value of 1.551 ks although with the current processing the charge time would have been 1.54 ksec.

Window constraint met.

ACIS Window in place, so that only chip I3 has events.