

V&V Reference Report

L2 ASCDS Version : 8.4.3

Observation 14275 - L2 Version 1
Chandra X-Ray Center

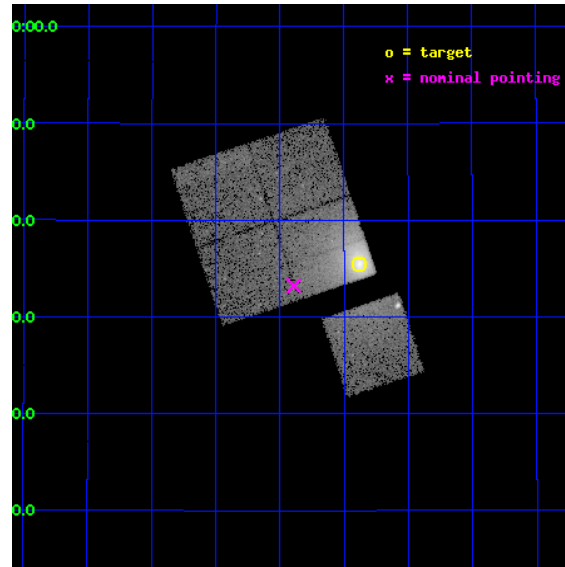
L2 Processing Date : Apr 9 2012

Contents

1	Front	2
2	OBI	3
2.1	OBI	3
2.1.1	Images	3
2.1.2	Bias	3
2.1.3	Parameters	4
2.1.4	Events	4
2.2	Compared Parameters	5
2.3	Aspect	6
2.4	Star Slots	9
2.4.1	Slot 3	9
2.4.2	Slot 4	10
2.4.3	Slot 5	11
2.4.4	Slot 6	12
2.4.5	Slot 7	13
2.5	FID Slots	14
2.5.1	Slot 0	14
2.5.2	Slot 1	15
2.5.3	Slot 2	16
A	Summary	17
A.1	Status	17
A.2	Comments	17

1 Front

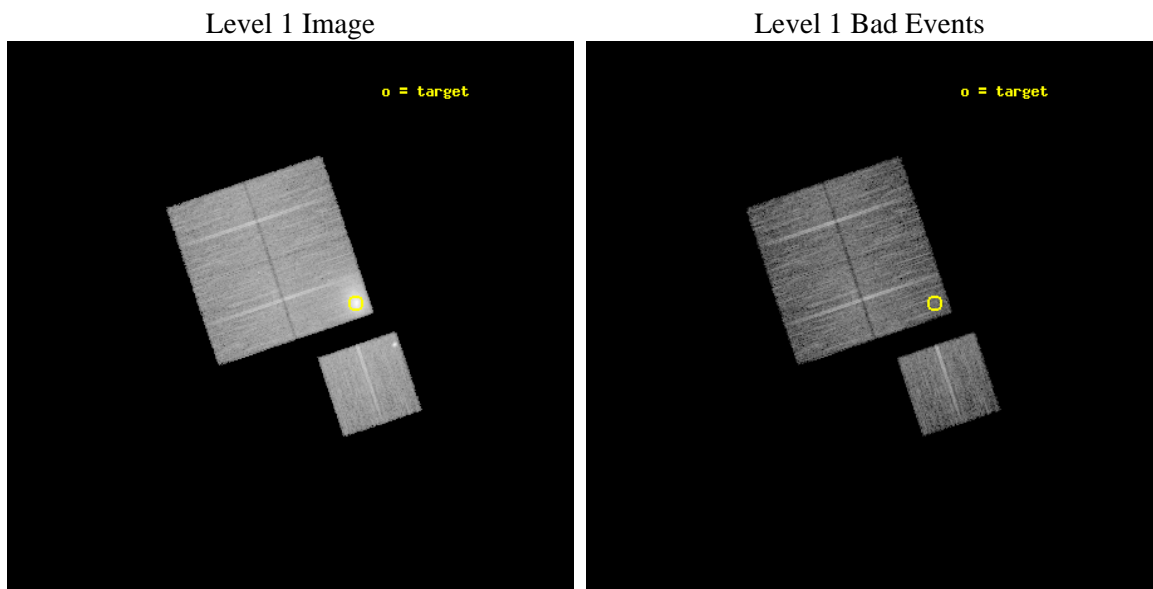
seq_num	890070	Sequence number
obs_id	14275	Observation id
title	AO-13 Calibration Observations of A1795	Proposal title
observer	Dr. CXC Calibration	Principal investigator
object	A1795	Source name
dtcycle	0	
cycle	P	events from which exps? Prim/Second/Both
ra_targ	207.219583	Observer's specified target RA [deg]
dec_targ	26.590833	Observer's specified target Dec [deg]
ra_nom	207.34794590943	Nominal RA [deg]
dec_nom	26.553797793766	Nominal Dec [deg]
roll_nom	161.46328223117	Nominal Roll [deg]
revision	1	Processing version of data
ontime	15081.500115991	Sum of GTIs [s]
livetime	14884.449214136	Livetime [s]
ontime0	15081.500115991	Sum of GTIs [s]
ontime1	15081.500115991	Sum of GTIs [s]
ontime2	15081.500115991	Sum of GTIs [s]
ontime3	15081.500115991	Sum of GTIs [s]
ontime6	15081.500115991	Sum of GTIs [s]
l2events	113936	Number of level 2 events



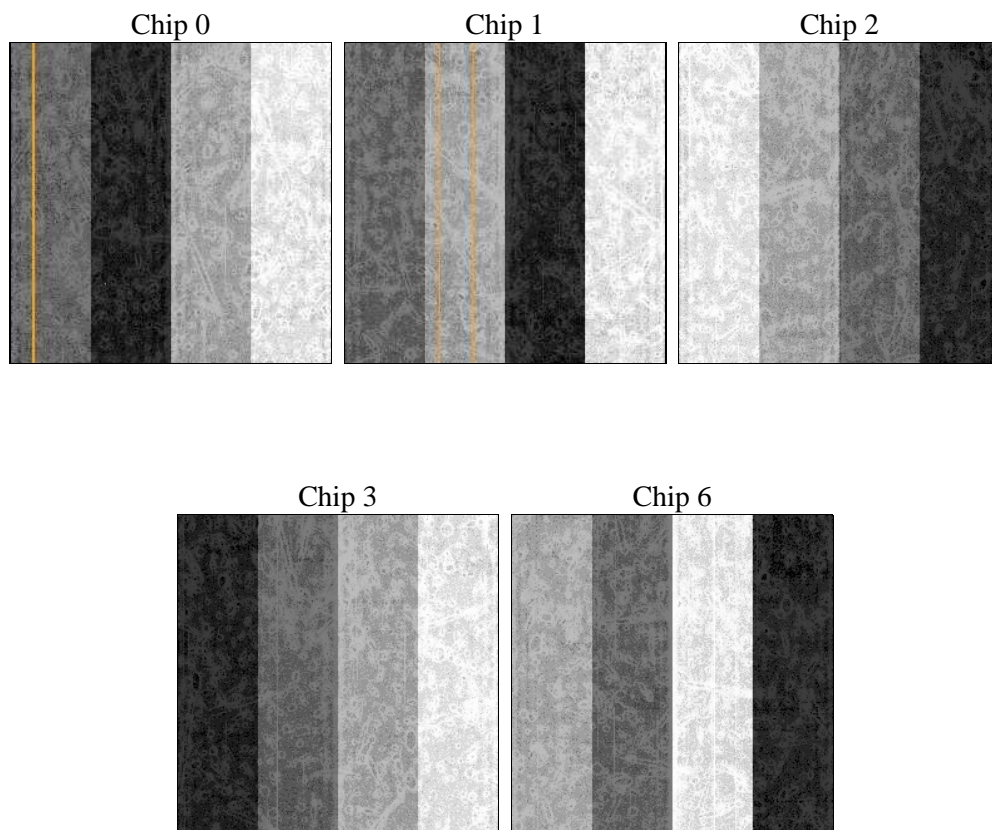
2 OBI

2.1 OBI

2.1.1 Images



2.1.2 Bias



2.1.3 Parameters

obi_num	0	Obi number	sched_exp_time	15000.000000	[s] Scheduled observation exposure time
ascdsver	8.4.3	Processing system revision	ontime	15081.500115991	Sum of GTIs [s]
caldbver	4.4.9	 	ontime0	15081.500115991	Sum of GTIs [s]
date	2012-04-09T15:44:01	Date and time of file creation	ontime1	15081.500115991	Sum of GTIs [s]
revision	1	Processing version of data	ontime2	15081.500115991	Sum of GTIs [s]
			ontime3	15081.500115991	Sum of GTIs [s]
			ontime6	15081.500115991	Sum of GTIs [s]
			l1events	482937	Number of level 1 events

2.1.4 Events

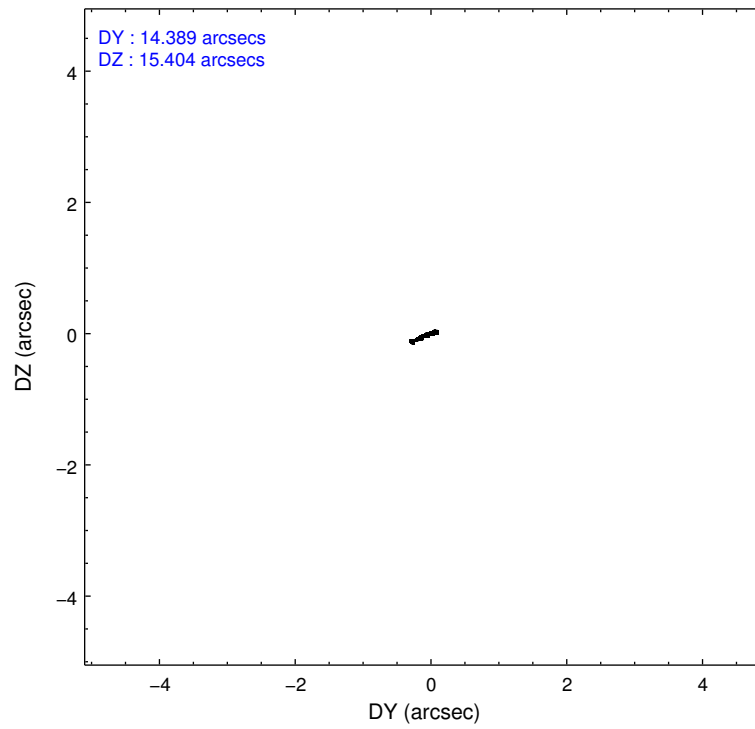
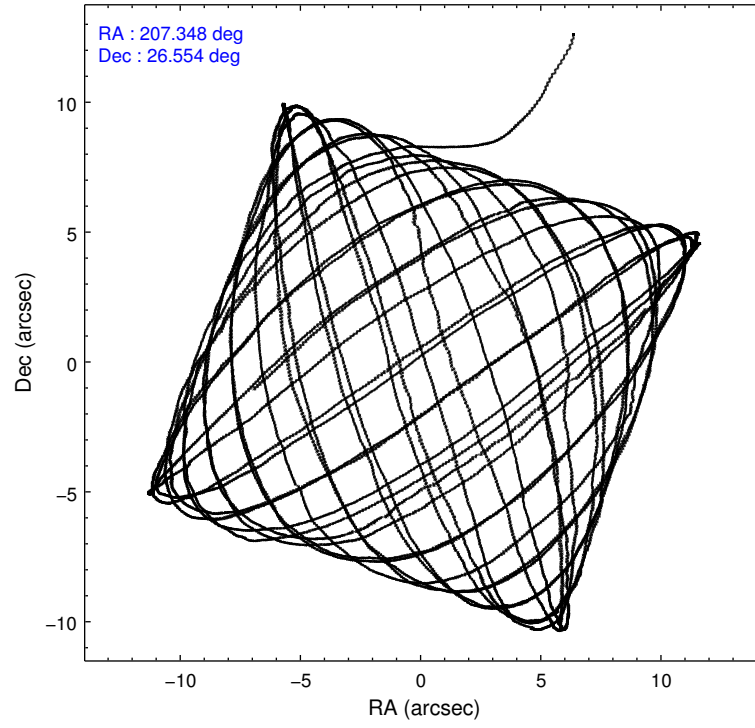
	ccd 0	ccd 1	ccd 2	ccd 3	ccd 6
level 1 events	78772	79281	150663	85013	89208
rejected events	67430	68056	73232	74671	72903
rejected %	85%	85%	48%	87%	81%

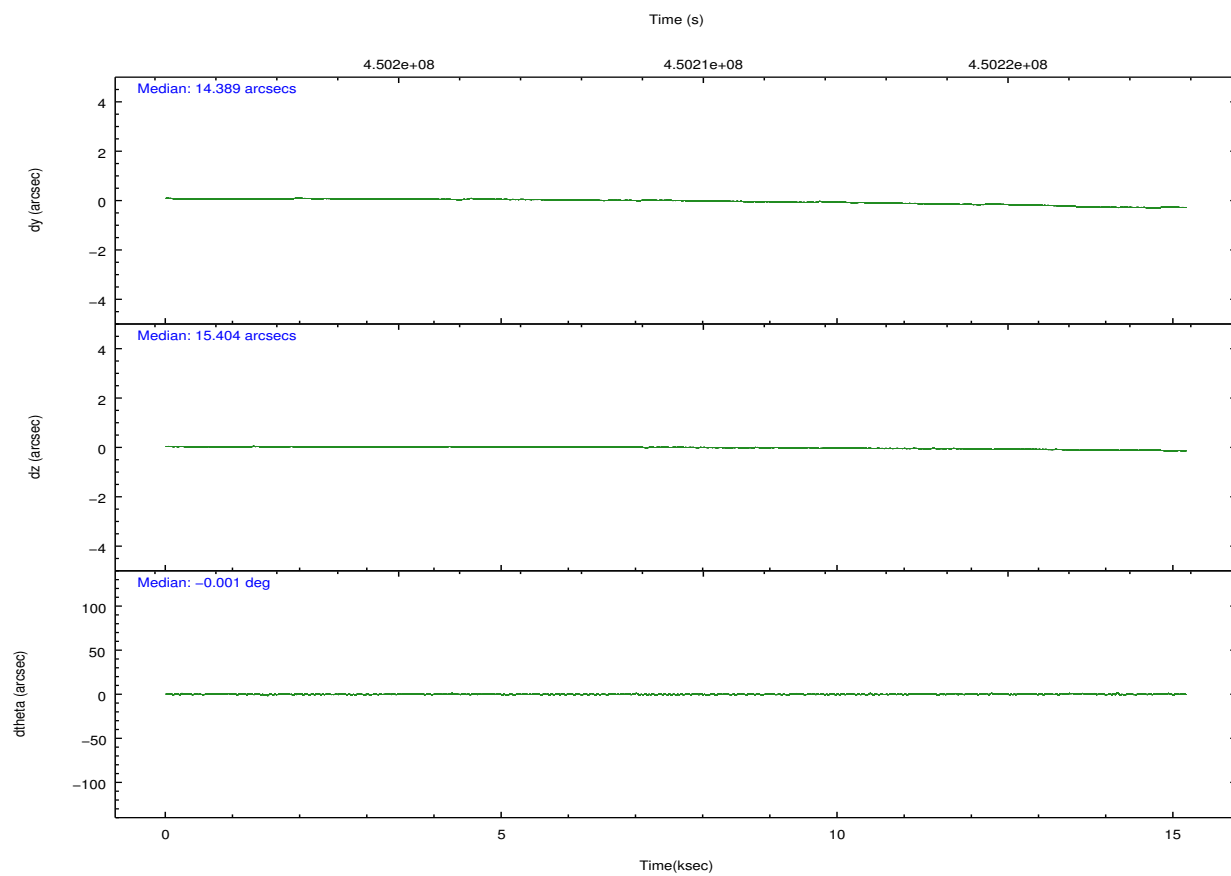
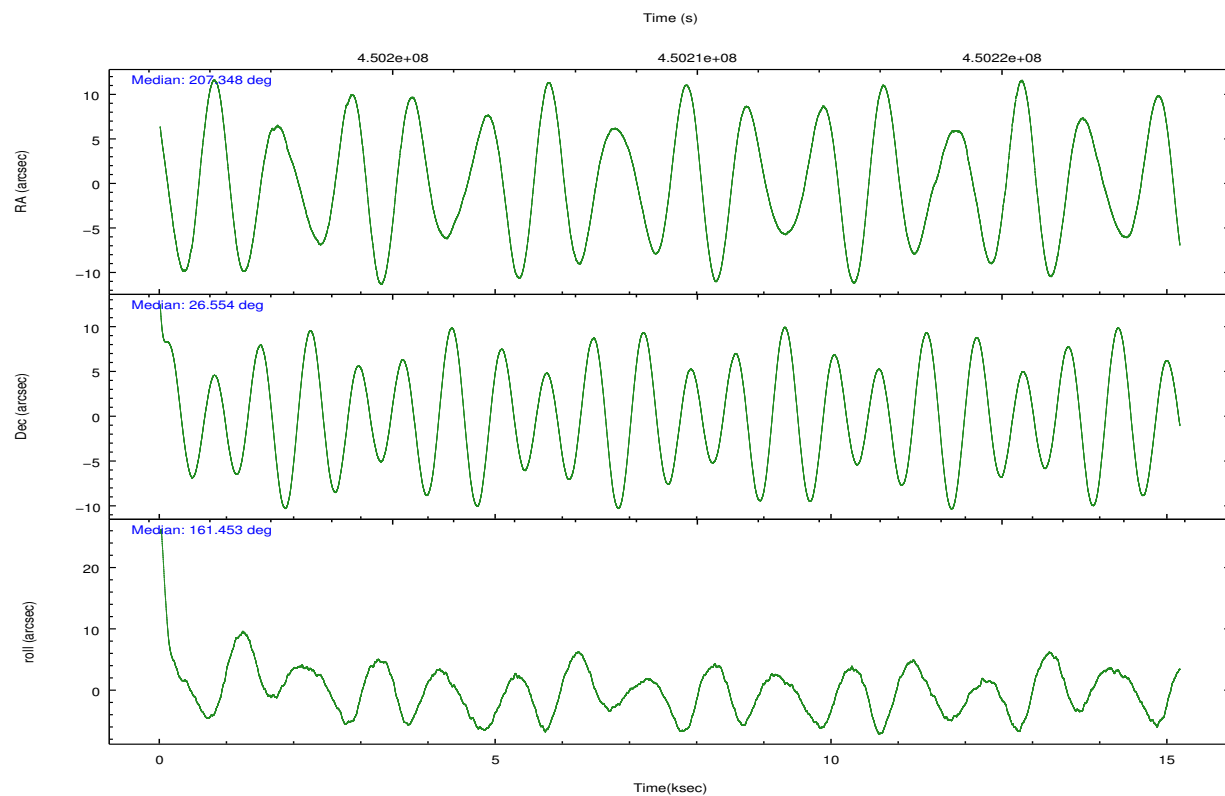
	ccd 0	ccd 1	ccd 2	ccd 3	ccd 6
grade 0 events	4541	4180	57384	4159	8743
	5%	5%	38%	4%	9%
grade 1 events	54	50	265	40	64
	0%	0%	0%	0%	0%
grade 2 events	2567	2601	9481	2221	2837
	3%	3%	6%	2%	3%
grade 3 events	1092	1026	3242	1040	1193
	1%	1%	2%	1%	1%
grade 4 events	1077	1060	3287	1042	1179
	1%	1%	2%	1%	1%
grade 5 events	3966	4050	3904	4341	4047
	5%	5%	2%	5%	4%
grade 6 events	2066	2359	4053	1883	2355
	2%	2%	2%	2%	2%
grade 7 events	63409	63955	69047	70287	68790
	80%	80%	45%	82%	77%

2.2 Compared Parameters

Parameter	Planned	Actual	Parameter	Planned	Actual
Instrument	ACIS	ACIS	Obspar format version number	7	7
Detector	ACIS-01236	ACIS-01236	Obspar file type	PREDICTED	ACTUAL
Grating	NONE	NONE	Obspar update status	NONE	UPDATED
Data mode	VFAINT	VFAINT	Number of optional ACIS chips dropped	0	0
Observation mode	POINTING	POINTING	On-chip summing requested	N	N
[deg] Pointing RA	207.378048	207.3479459094278	Subarray requested	NONE	NONE
[deg] Pointing Dec	26.559335	26.5537977937658	Alternating exposures requested	N	N
[deg] Pointing Roll	161.241127	161.4632822311677	[s] Primary exposure time	0.000000	3.1
[mm] SIM focus pos	-0.782348	-0.7809083437167272			
[mm] SIM defocus	0	0.001439871863259334			
[mm] SIM translation stage pos	-215.164963	-215.162531930997			
[mm] SIM translation stage offset	-18.4275	-18.42992107193268			
[s] Observation start time (MET)	450202147.184000	450200902.34256			
Observation start date	2012-04-07T16:08:01	2012-04-07T15:48:22			
[s] Observation end time (MET)	450217147.184000	450217824.58096			
Observation end date	2012-04-07T20:18:01	2012-04-07T20:30:24			
Read mode	TIMED	TIMED			

2.3 Aspect



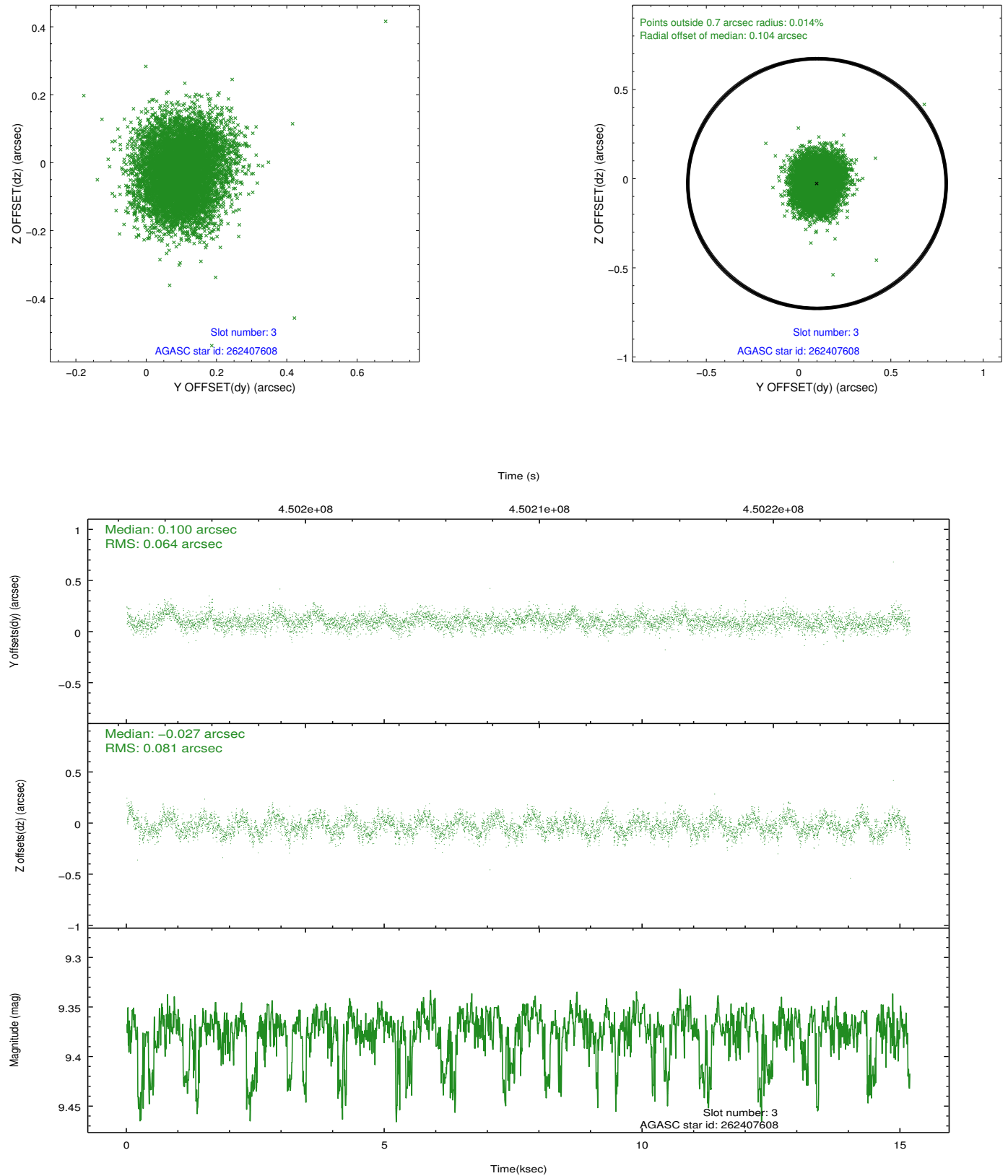


Slot Statistics

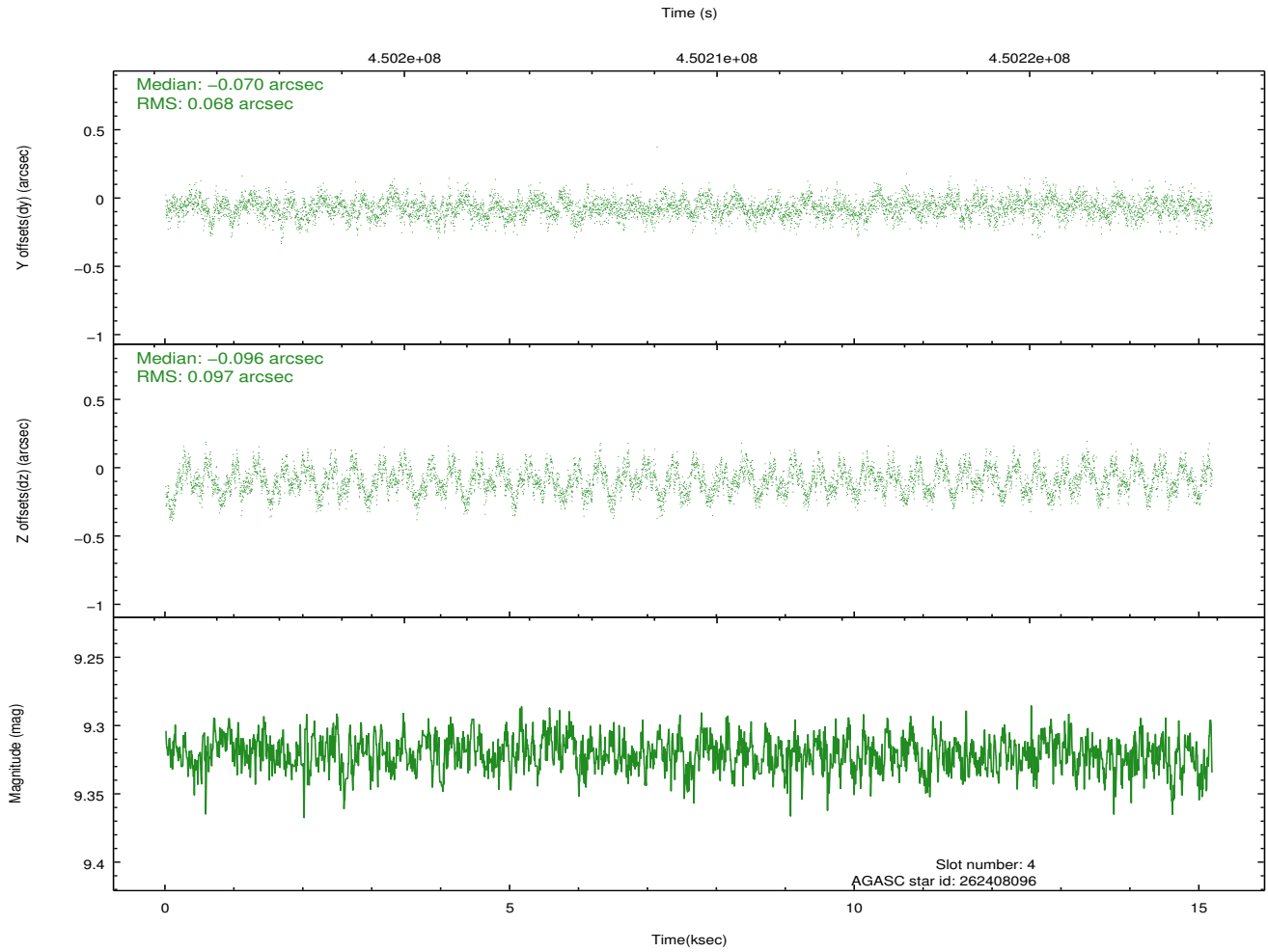
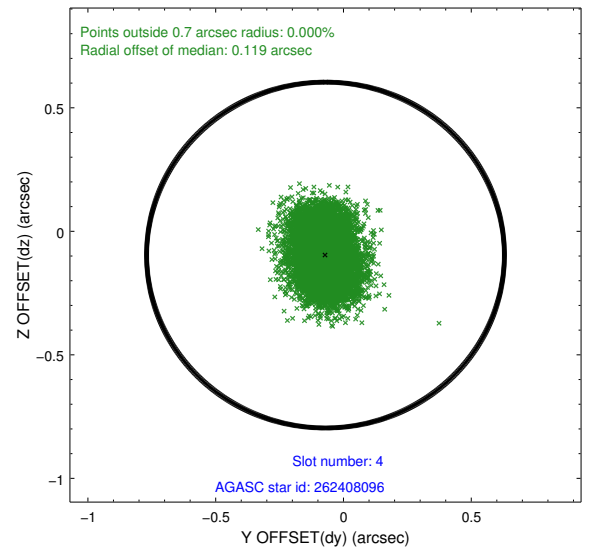
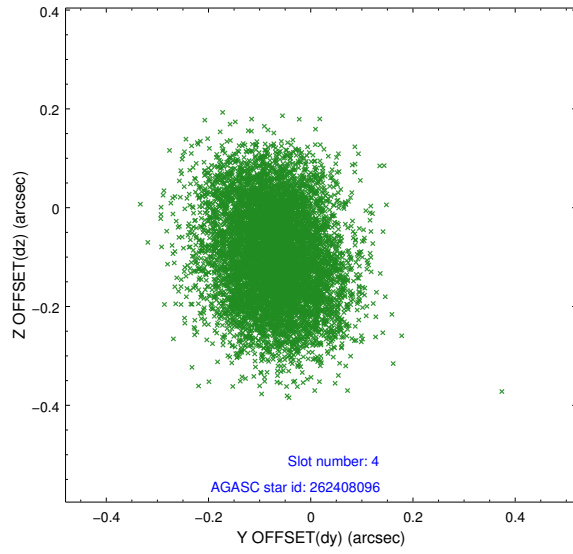
slot	status	id	mag	n_pts	med_dy	med_dz	dr1	dr2	ra	dec	mean_y	mean_z
0	FID	ACIS-I-1	7.11	3703	0.298	-0.248	0.010	0.019	0.000000	0.000000	925.06	-1217.75
1	FID	ACIS-I-5	7.11	3703	-0.465	0.210	0.007	0.012	0.000000	0.000000	-1823.60	680.01
2	FID	ACIS-I-6	7.15	3703	0.075	0.110	0.009	0.017	0.000000	0.000000	390.12	1324.71
3	GUIDE	262407608	9.37	7365	0.100	-0.027	0.110	0.174	207.378401	26.435507	-144.38	422.02
4	GUIDE	262408096	9.32	7402	-0.070	-0.096	0.128	0.201	207.011678	26.515421	1067.67	528.08
5	GUIDE	262408512	7.99	7404	-0.016	0.183	0.070	0.111	207.800210	27.128796	-620.03	-2377.82
6	GUIDE	262408936	9.63	7398	0.021	0.088	0.136	0.213	207.154731	26.726554	873.62	-339.36
7	GUIDE	262411960	9.68	7396	-0.030	-0.151	0.133	0.213	207.327895	25.881727	-630.83	2362.03

2.4 Star Slots

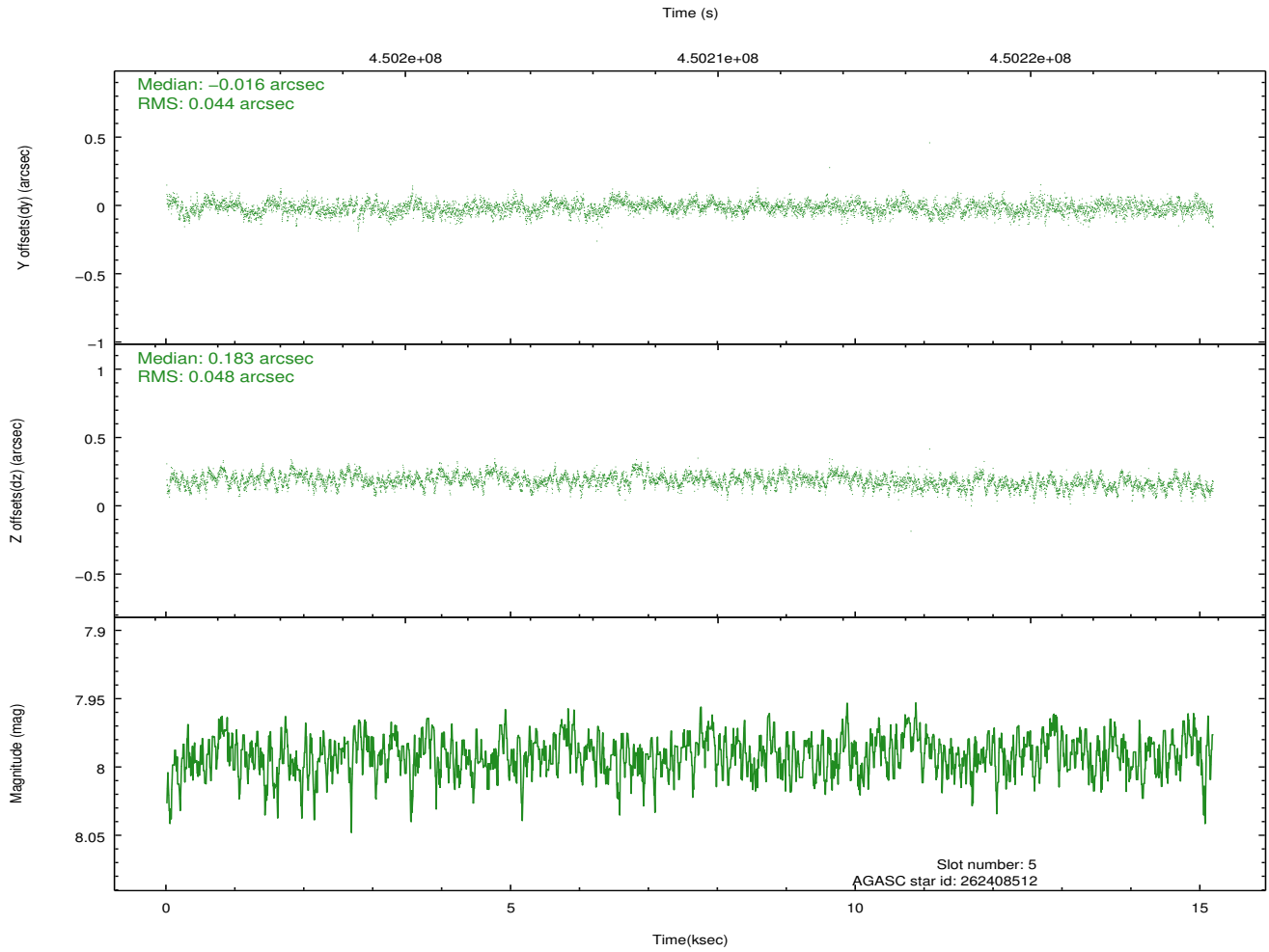
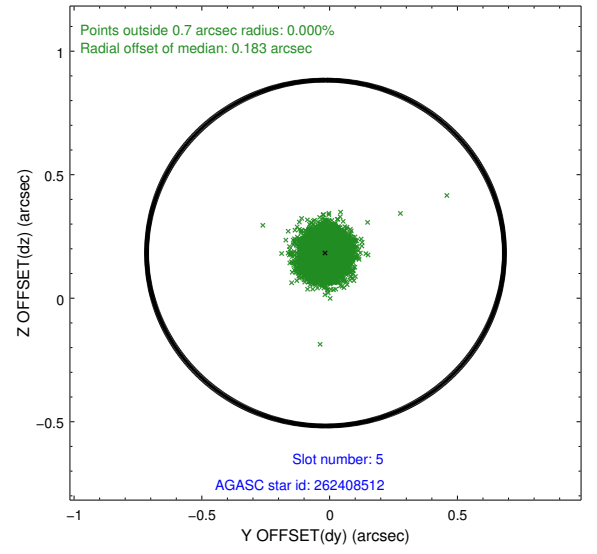
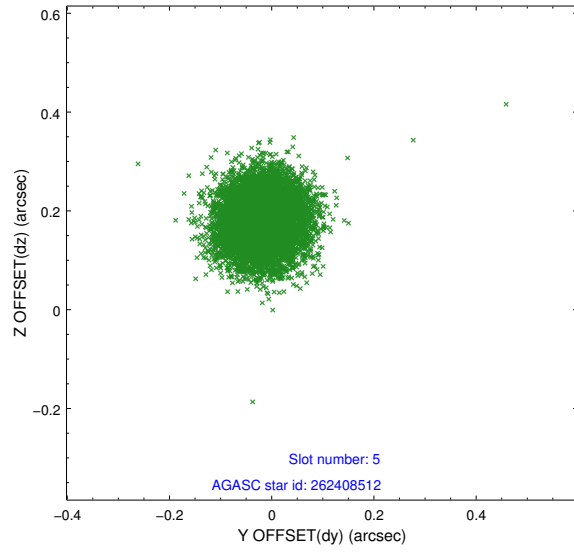
2.4.1 Slot 3



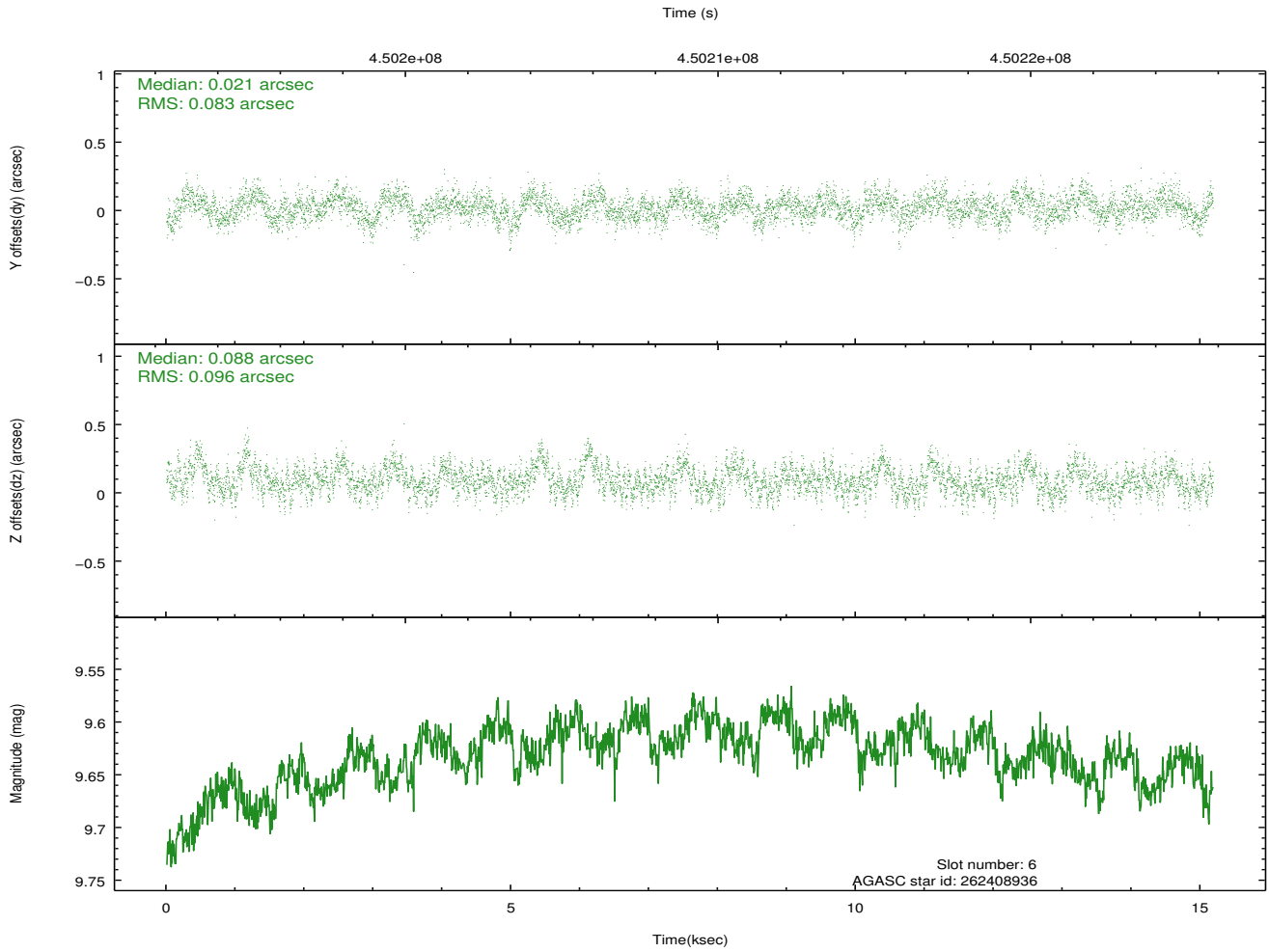
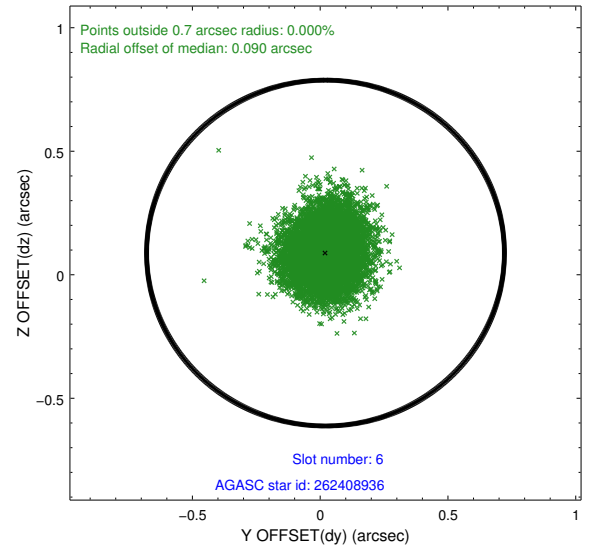
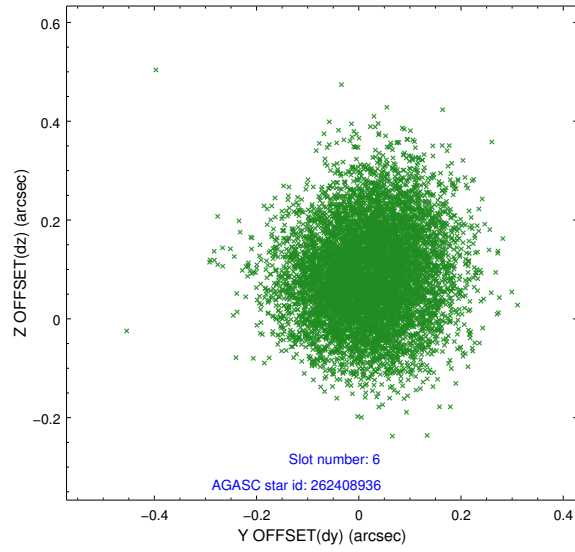
2.4.2 Slot 4



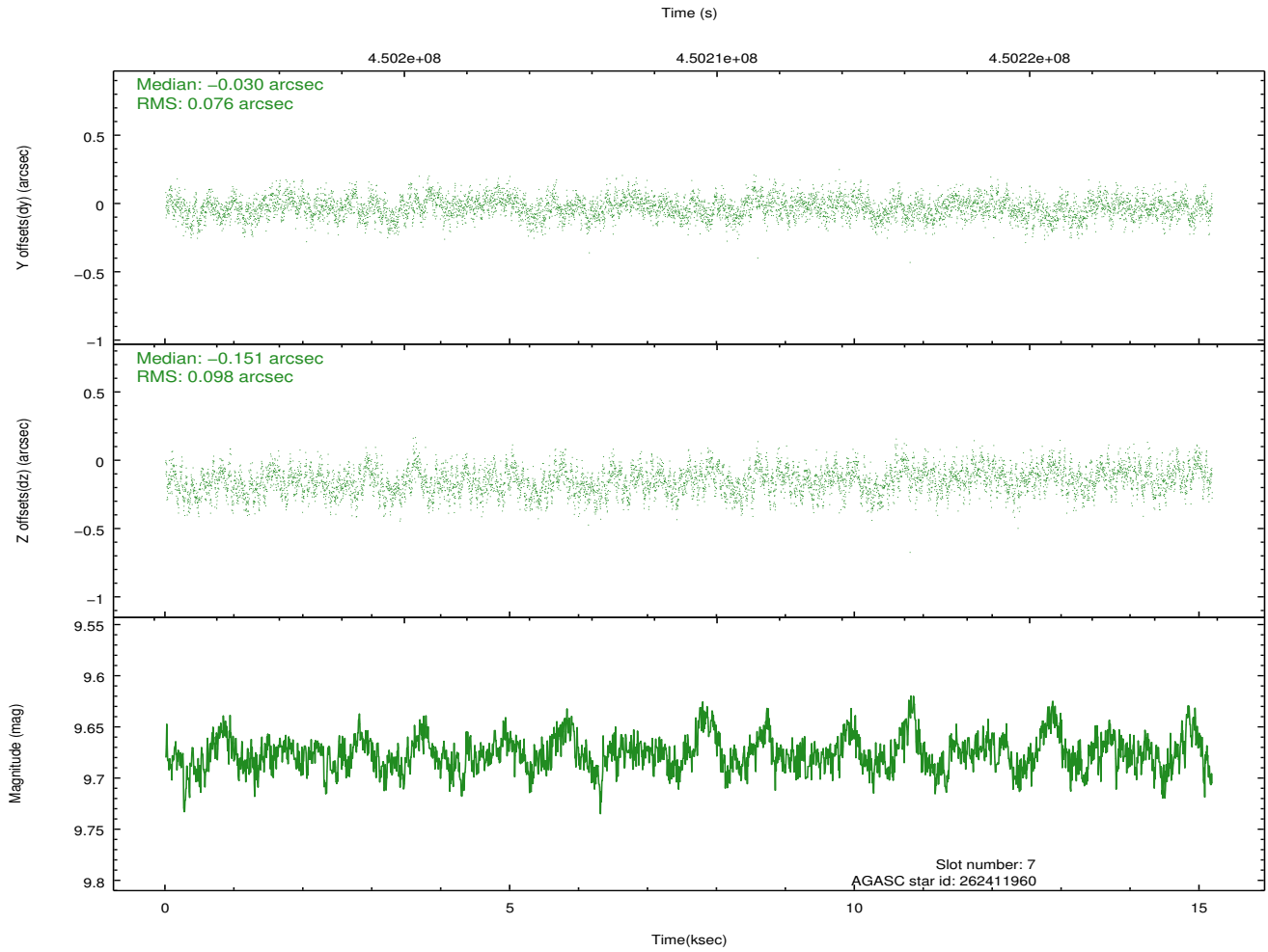
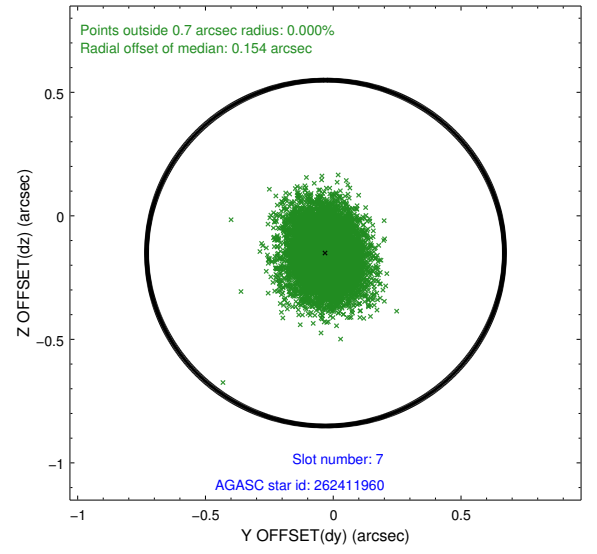
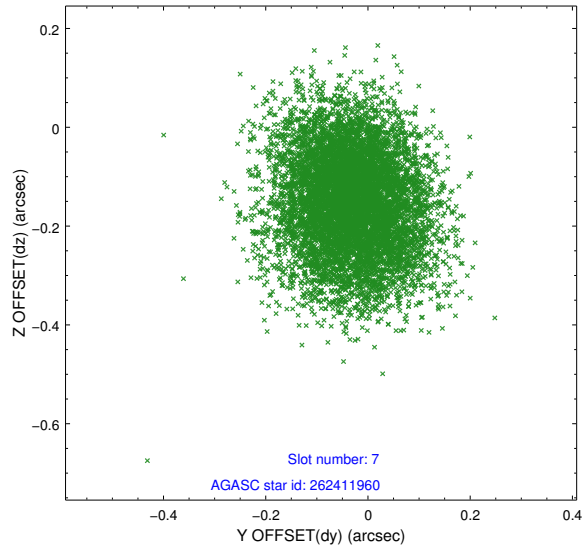
2.4.3 Slot 5



2.4.4 Slot 6

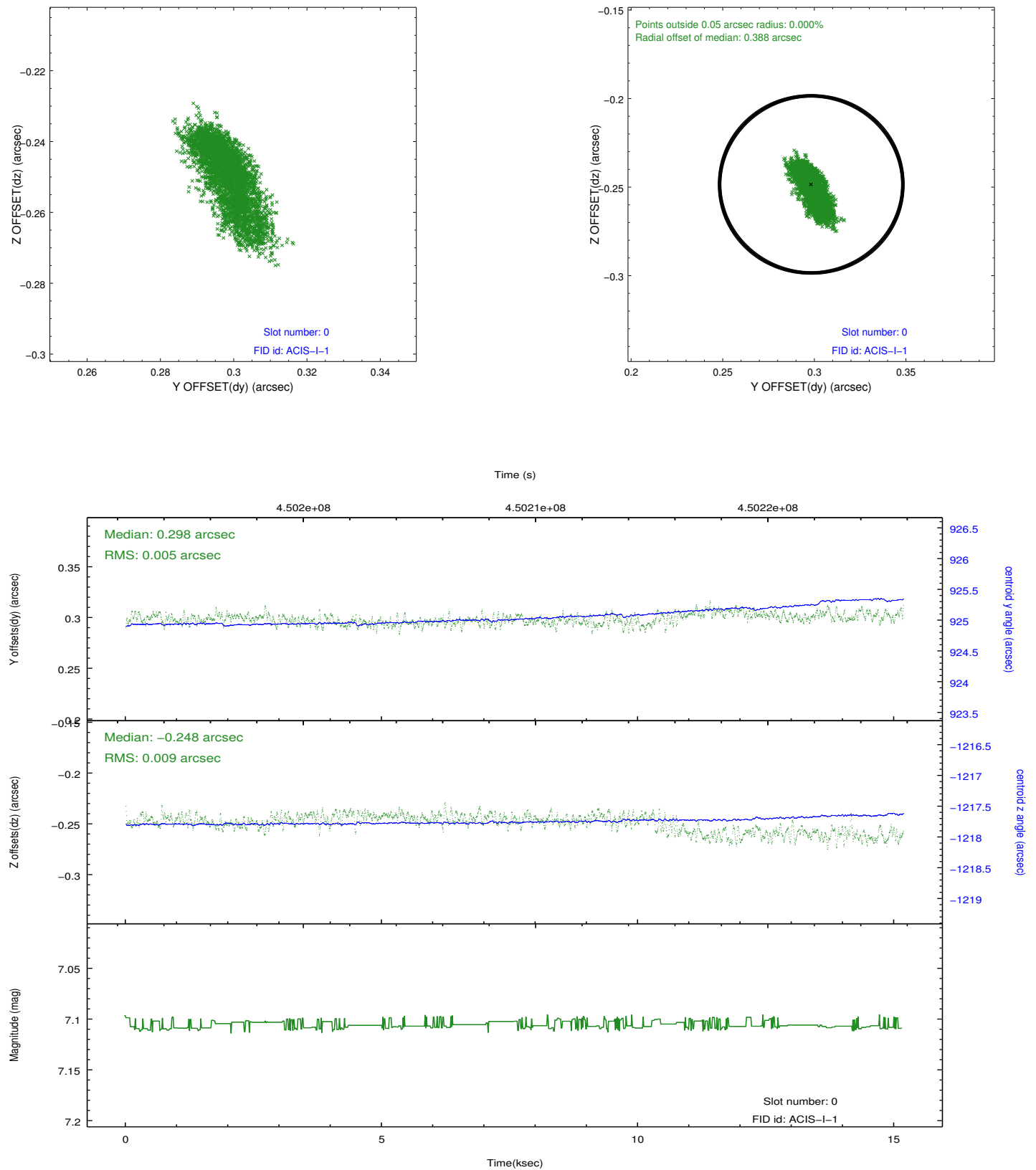


2.4.5 Slot 7

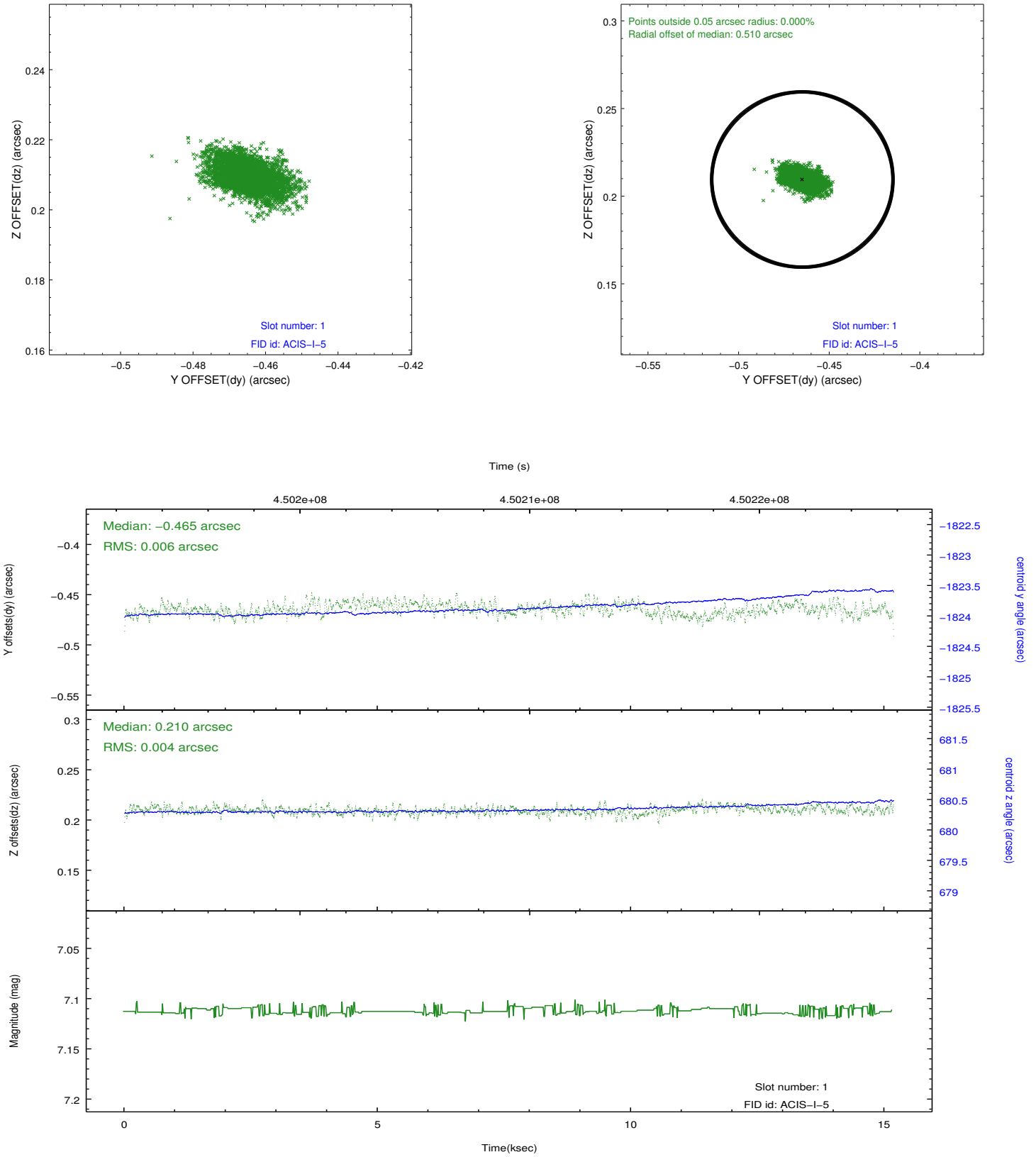


2.5 FID Slots

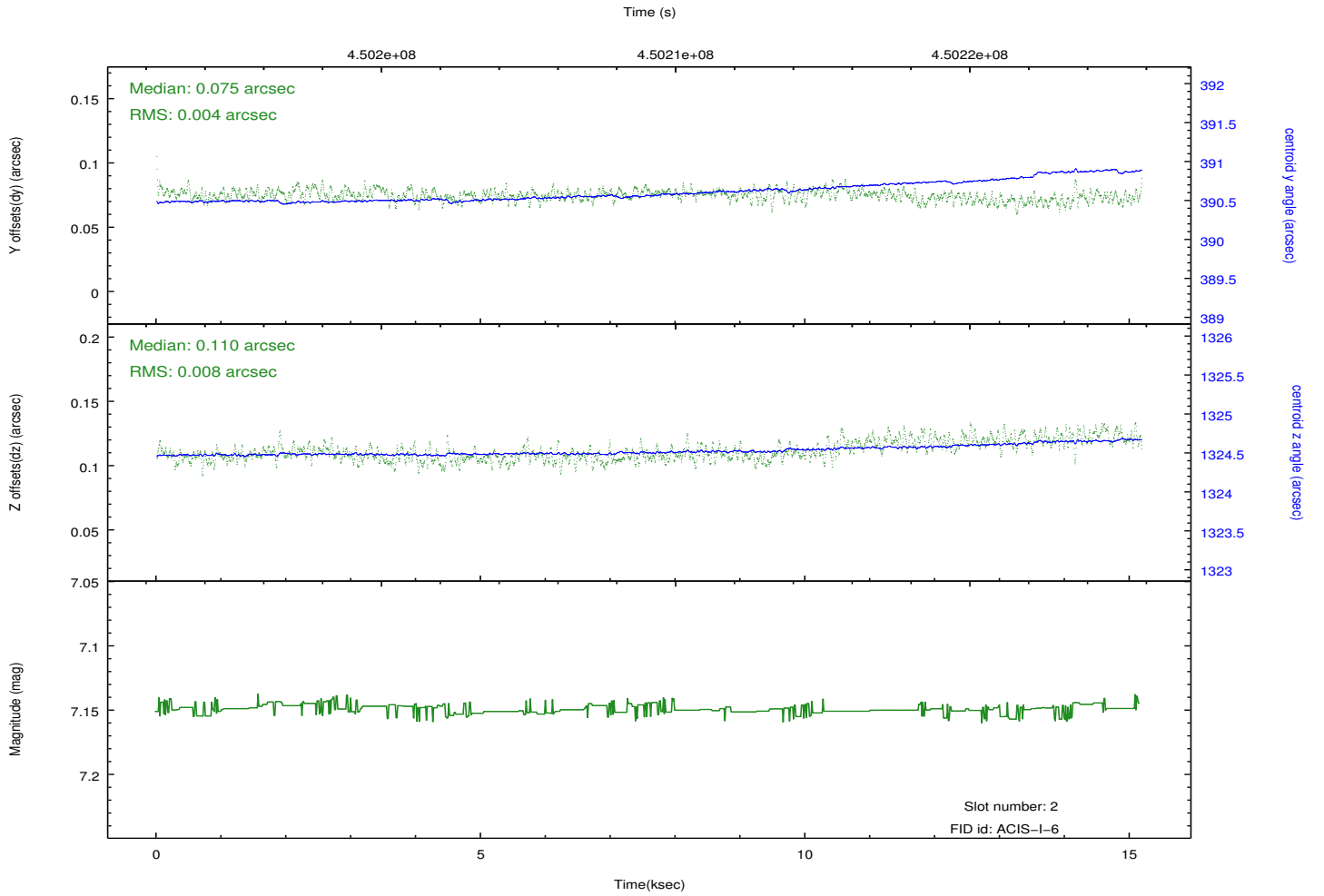
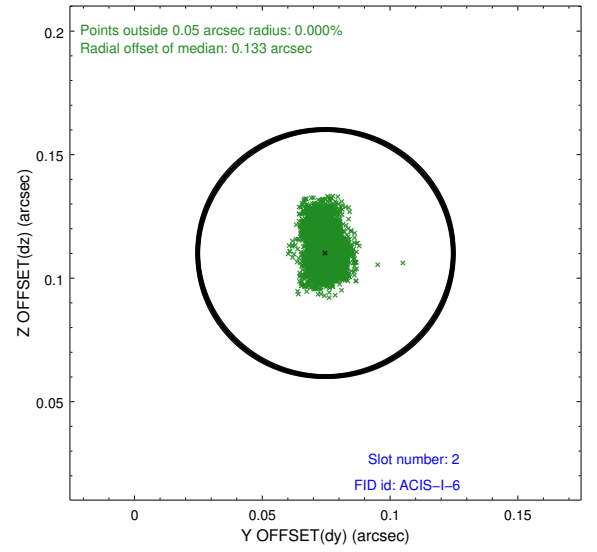
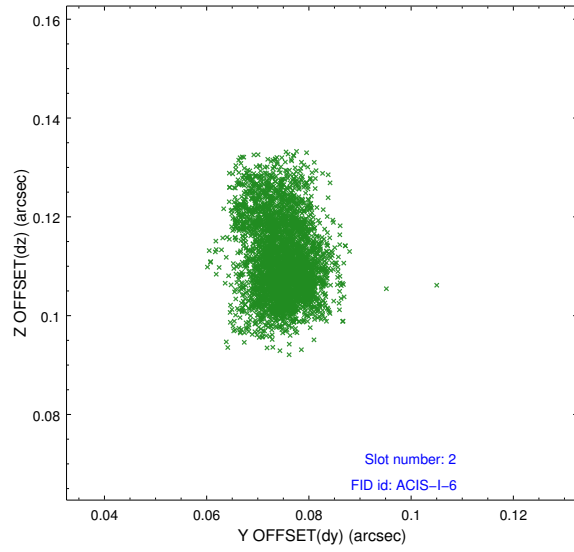
2.5.1 Slot 0



2.5.2 Slot 1



2.5.3 Slot 2



A Summary

A.1 Status

V&V Scientist	Jen Lauer
V&V Date (YYYY-MM-DD)	2012.04.09
V&V Edition	1
V&V Disposition and Status	OK
V&V Charge Time	15.081500115991

A.2 Comments