

# V&V Reference Report

## L2 ASCDS Version : 8.4.5

Observation 14215 - L2 Version 1  
Chandra X-Ray Center

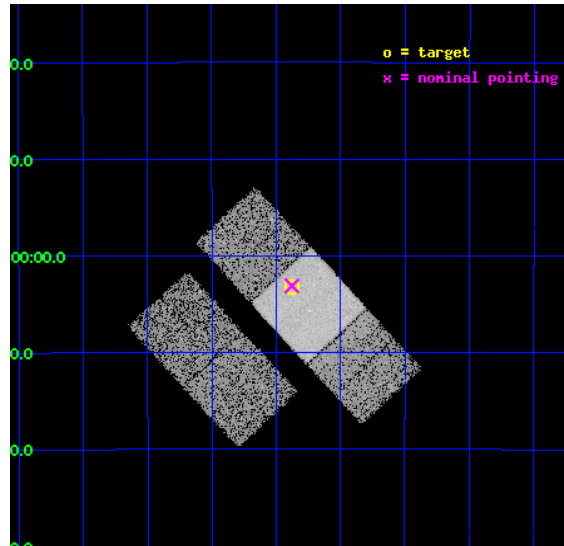
L2 Processing Date : Sep 3 2012

## Contents

<b>1</b>	<b>Front</b>	<b>2</b>
<b>2</b>	<b>OBI</b>	<b>3</b>
2.1	OBI . . . . .	3
2.1.1	Images . . . . .	3
2.1.2	Bias . . . . .	3
2.1.3	Parameters . . . . .	4
2.1.4	Events . . . . .	4
2.2	Compared Parameters . . . . .	5
2.3	Aspect . . . . .	6
2.4	Star Slots . . . . .	9
2.4.1	Slot 3 . . . . .	9
2.4.2	Slot 4 . . . . .	10
2.4.3	Slot 5 . . . . .	11
2.4.4	Slot 6 . . . . .	12
2.4.5	Slot 7 . . . . .	13
2.5	FID Slots . . . . .	14
2.5.1	Slot 0 . . . . .	14
2.5.2	Slot 1 . . . . .	15
2.5.3	Slot 2 . . . . .	16
<b>A</b>	<b>Summary</b>	<b>17</b>
A.1	Status . . . . .	17
A.2	Comments . . . . .	17

# 1 Front

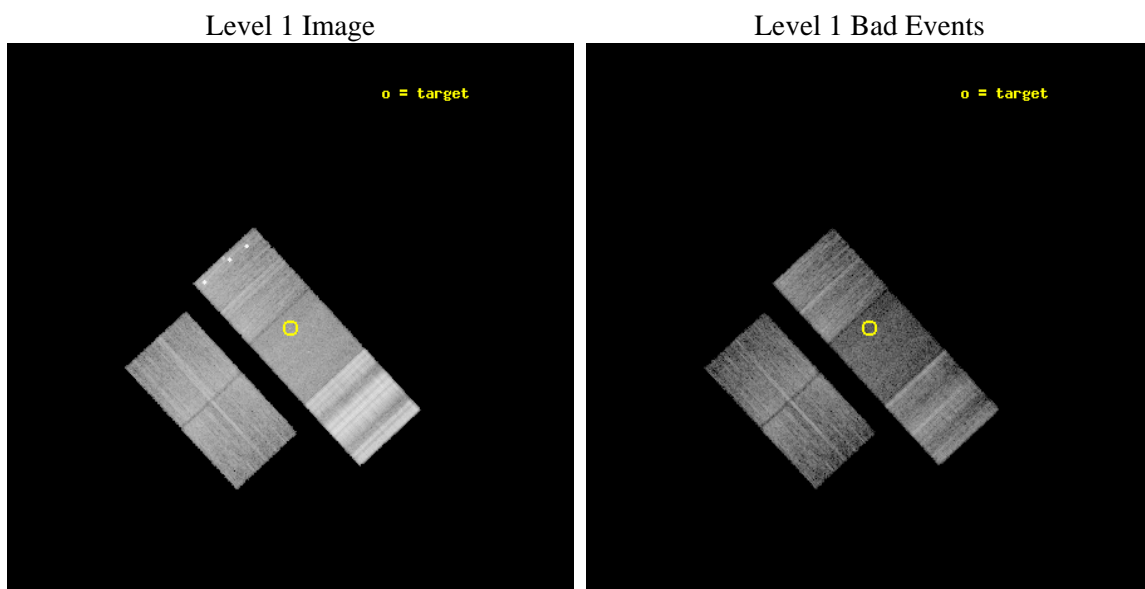
seq_num	702711	Sequence number
obs_id	14215	Observation id
title	Exploratory X-ray Monitoring of $z>4$ Radio-Quiet Quasars	Proposal t
observer	Prof. Ohad Shemmer	Principal investigator
object	Q 0000-263	Source name
dtcycle	0	&#160
cycle	P	events from which exps? Prim/Second/Both
ra_targ	0.845417	Observer's specified target RA [deg]
dec_targ	-26.054667	Observer's specified target Dec [deg]
ra_nom	0.84456796359275	Nominal RA [deg]
dec_nom	-26.051739474997	Nominal Dec [deg]
roll_nom	47.228025691155	Nominal Roll [deg]
revision	1	Processing version of data
ontime	10059.500077367	Sum of GTIs [s]
livetime	9928.0653031598	Livetime [s]
ontime2	10059.500077367	Sum of GTIs [s]
ontime3	10059.500077367	Sum of GTIs [s]
ontime6	10059.500077367	Sum of GTIs [s]
ontime7	10059.500077367	Sum of GTIs [s]
ontime8	10059.500077367	Sum of GTIs [s]
l2events	67038	Number of level 2 events



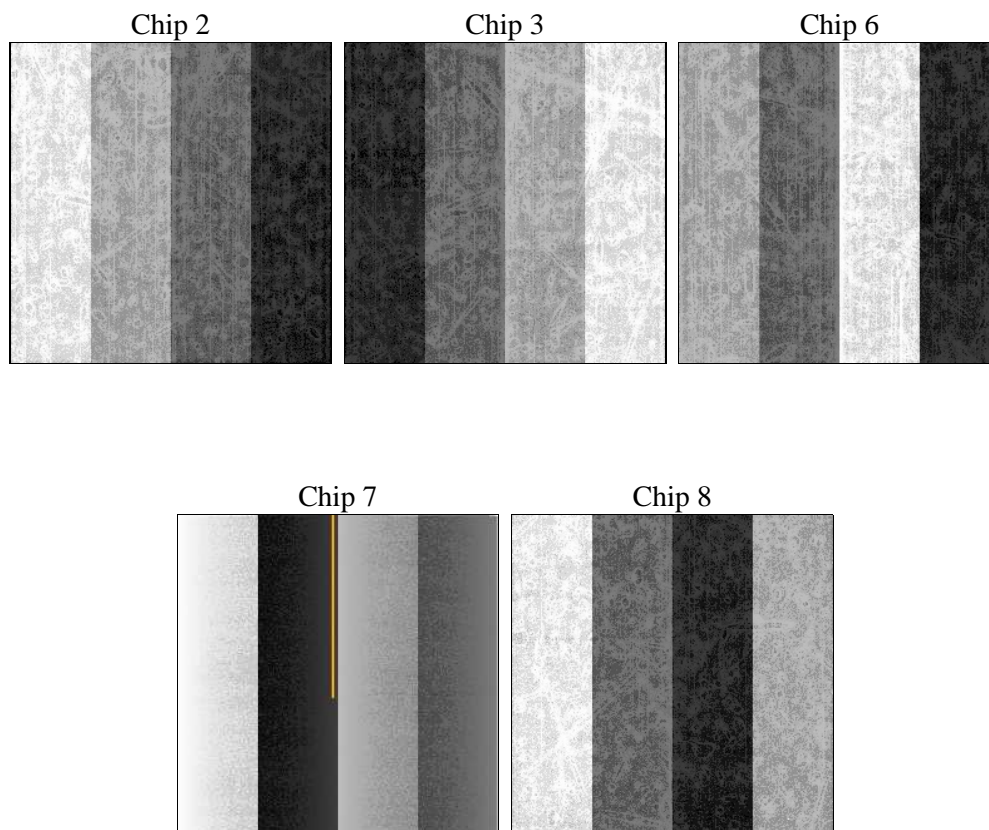
## 2 OBI

### 2.1 OBI

#### 2.1.1 Images



#### 2.1.2 Bias



### 2.1.3 Parameters

obi_num	0	Obi number	sched_exp_time	10000.000000	[s] Scheduled observation exposure time
ascdsver	8.4.5	Processing system revision	ontime	10059.500077367	Sum of GTIs [s]
caldsver	4.5.1.1	&#160	ontime2	10059.500077367	Sum of GTIs [s]
date	2012-09-03T20:03:30	Date and time of file creation	ontime3	10059.500077367	Sum of GTIs [s]
revision	1	Processing version of data	ontime6	10059.500077367	Sum of GTIs [s]
			ontime7	10059.500077367	Sum of GTIs [s]
			ontime8	10059.500077367	Sum of GTIs [s]
			l1events	673911	Number of level 1 events

### 2.1.4 Events

	ccd 2	ccd 3	ccd 6	ccd 7	ccd 8
level 1 events	94900	85256	112141	84944	296670
rejected events	81403	77890	90736	45689	99155
rejected %	85%	91%	80%	53%	33%

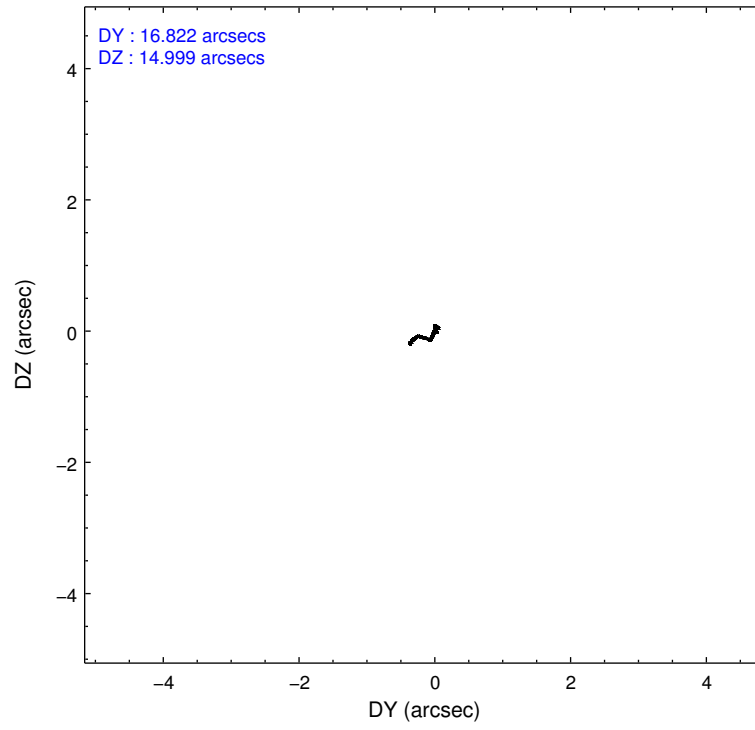
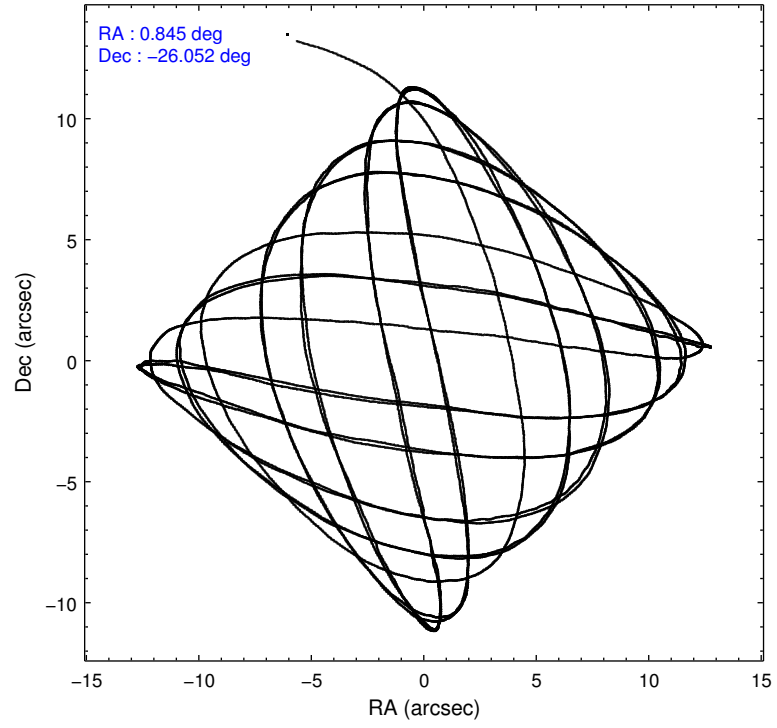
	ccd 2	ccd 3	ccd 6	ccd 7	ccd 8
grade 0 events	5728	2850	14567	4095	60864
	6%	3%	12%	4%	20%
grade 1 events	58	26	103	184	526
	0%	0%	0%	0%	0%
grade 2 events	4071	1891	3793	9745	26615
	4%	2%	3%	11%	8%
grade 3 events	675	671	690	3490	35903
	0%	0%	0%	4%	12%
grade 4 events	1296	649	715	3497	32803
	1%	0%	0%	4%	11%
grade 5 events	2289	2805	2780	8272	6405
	2%	3%	2%	9%	2%
grade 6 events	1734	1307	1646	18434	41339
	1%	1%	1%	21%	13%
grade 7 events	79049	75057	87847	37227	92215
	83%	88%	78%	43%	31%

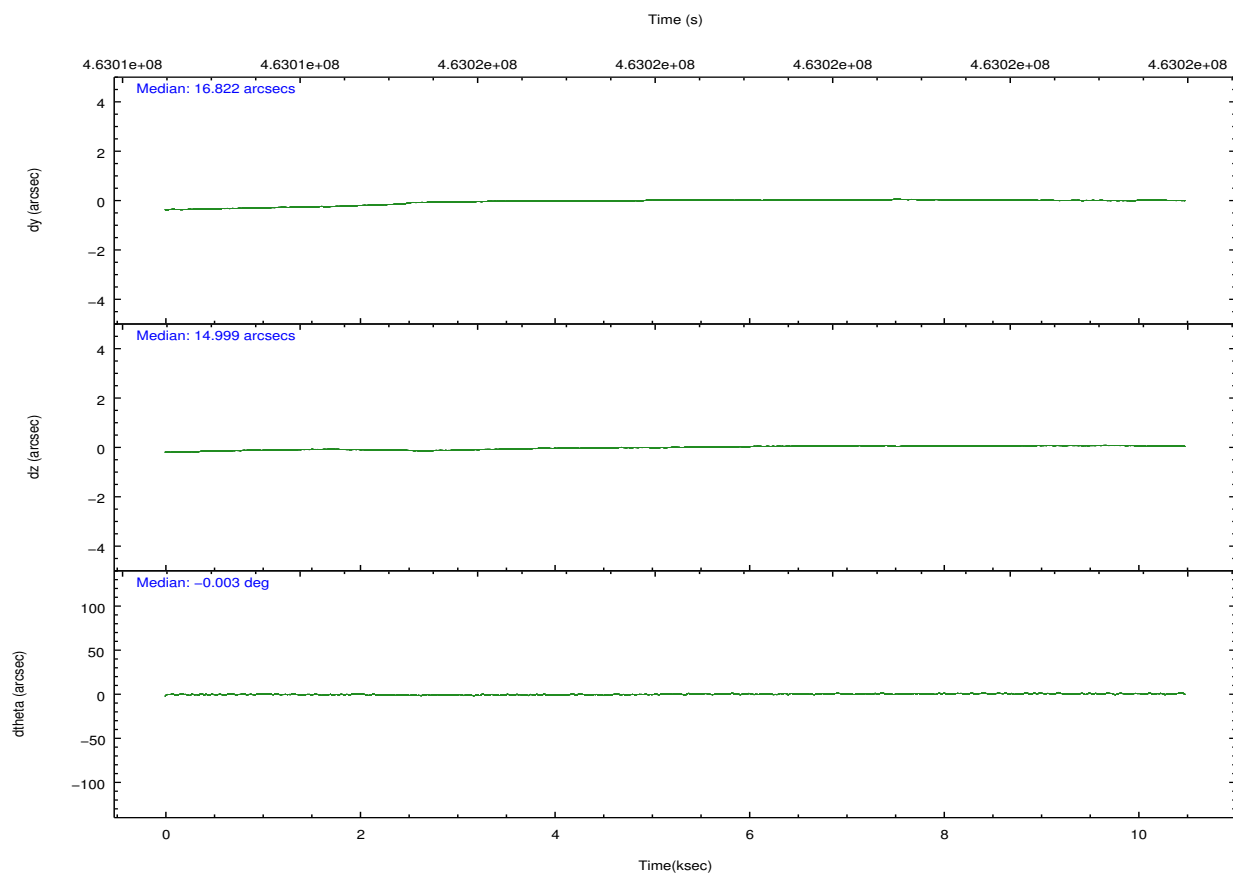
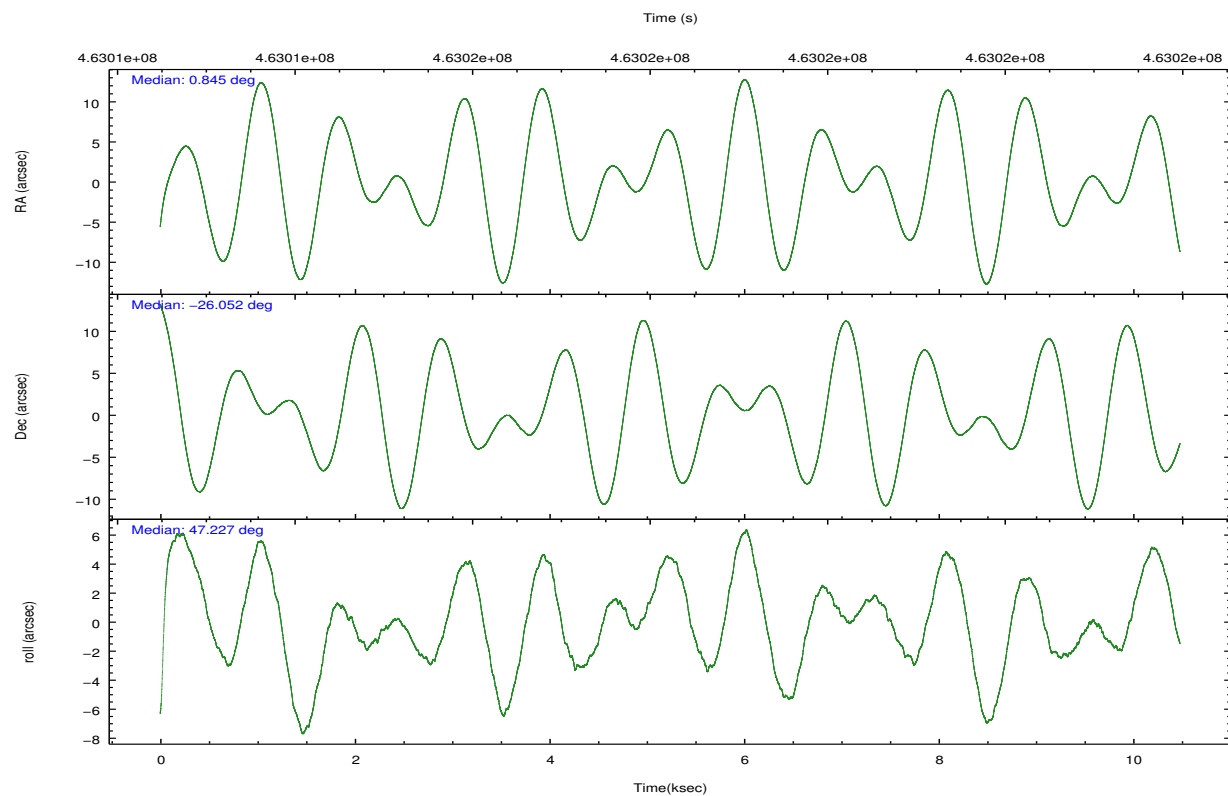


## 2.2 Compared Parameters

Parameter	Planned	Actual	Parameter	Planned	Actual
Instrument	ACIS	ACIS	Obspar format version number	7	7
Detector	ACIS-23678	ACIS-23678	Obspar file type	PREDICTED	ACTUAL
Grating	NONE	NONE	Obspar update status	NONE	UPDATED
Data mode	FAINT	FAINT	CCD I0 on	N	N
Observation mode	POINTING	POINTING	CCD I1 on	N	N
[deg] Pointing RA	0.838242	0.844567963592751	CCD I2 on	O2	Y
[deg] Pointing Dec	-26.078488	-26.05173947499719	CCD I3 on	O1	Y
[deg] Pointing Roll	47.068627	47.22802569115498	CCD S0 on	N	N
[mm] SIM focus pos	-0.684267	-0.6828225247311905	CCD S1 on	N	N
[mm] SIM defocus	0	0.001444936568705701	CCD S2 on	Y	Y
[mm] SIM translation stage pos	-190.132523	-190.1400660498719	CCD S3 on	Y	Y
[mm] SIM translation stage offset	0	0.00754346686406393	CCD S4 on	Y	Y
[s] Observation start time (MET)	463013466.184000	463012234.00898	CCD S5 on	N	N
Observation start date	2012-09-02T22:49:59	2012-09-02T22:30:34	Number of optional ACIS chips dropped	0	0
[s] Observation end time (MET)	463023466.184000	463024450.98464	On-chip summing requested	N	N
Observation end date	2012-09-03T01:36:39	2012-09-03T01:54:10	Subarray requested	NONE	NONE
Read mode	TIMED	TIMED	Alternating exposures requested	N	N
			[s] Primary exposure time	0.000000	3.1

## 2.3 Aspect



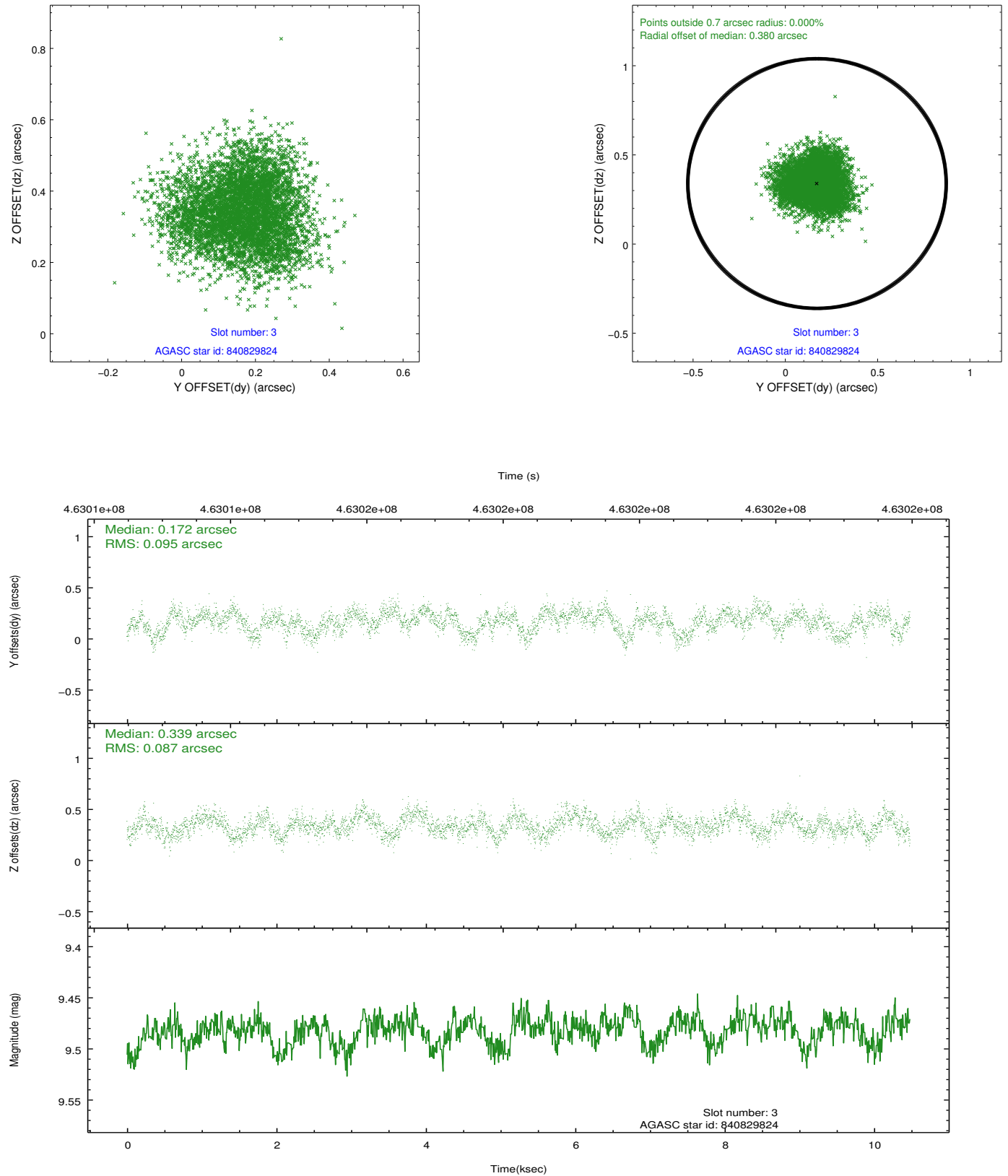


### Slot Statistics

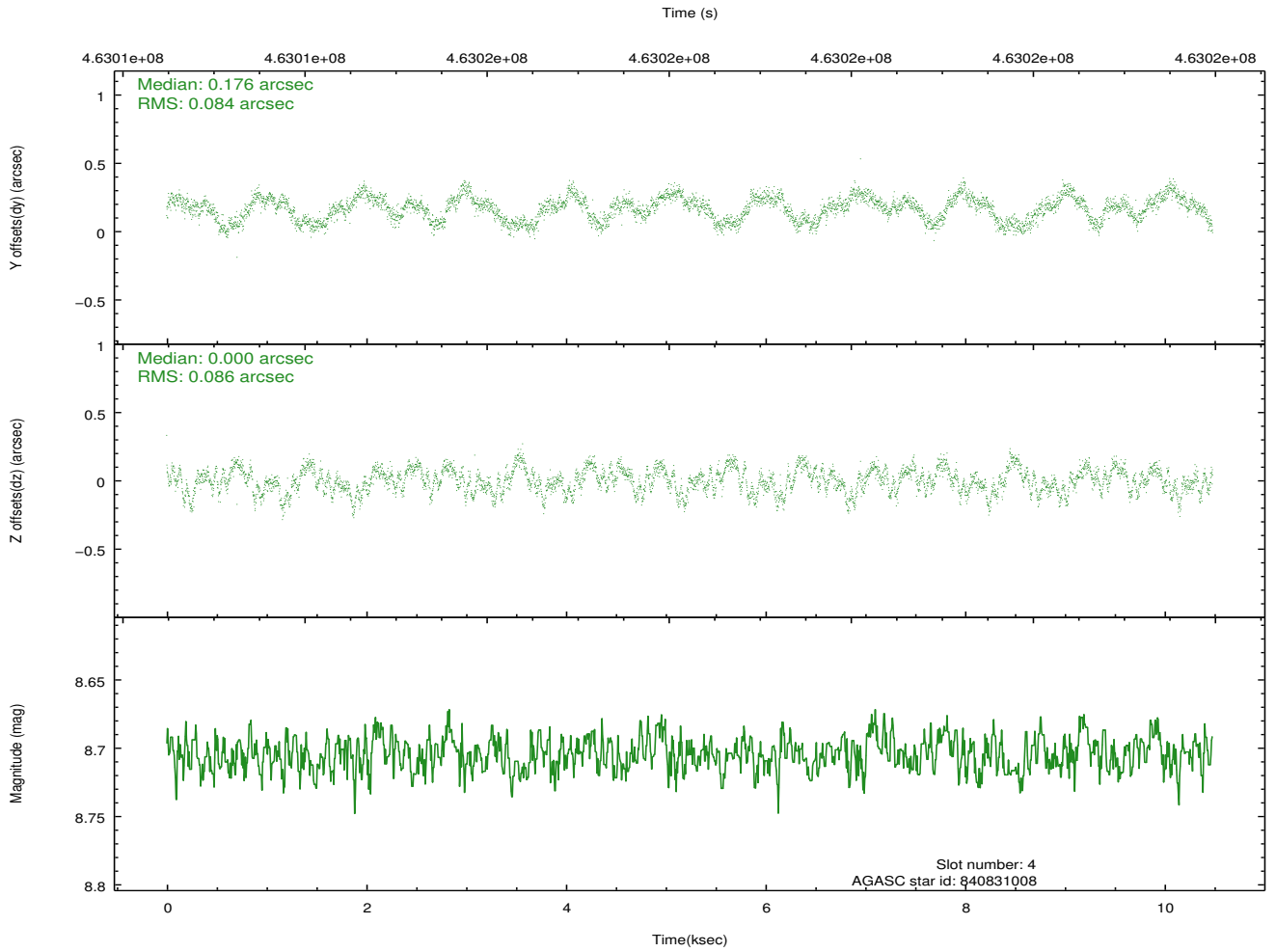
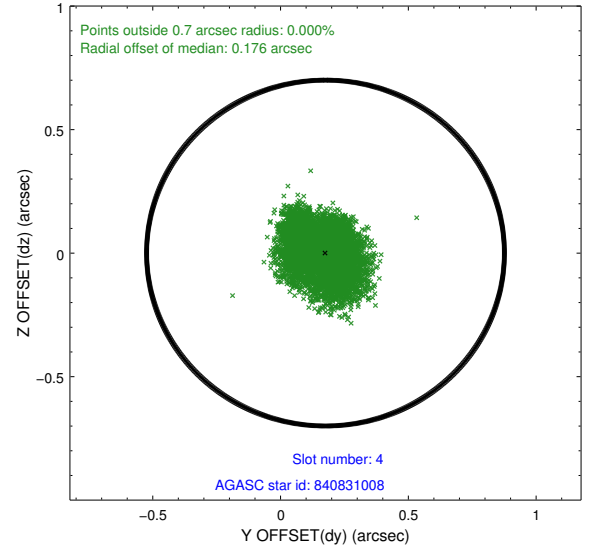
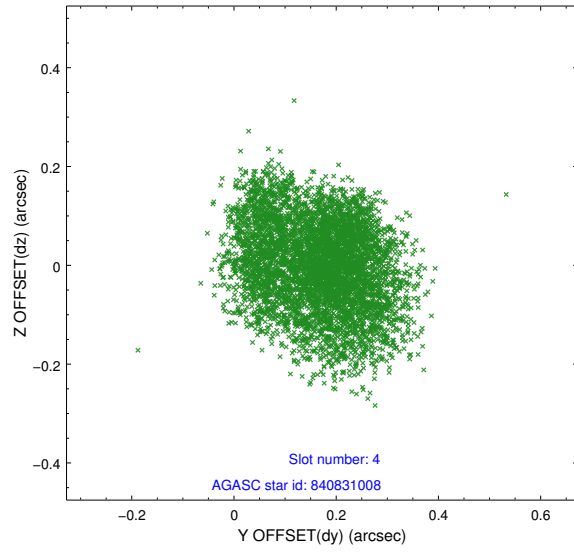
slot	status	id	mag	n_pts	med_dy	med_dz	dr1	dr2	ra	dec	mean_y	mean_z
0	FID	ACIS-S-2	6.99	2557	-0.136	-0.088	0.007	0.012	0.000000	0.000000	-769.93	-1736.44
1	FID	ACIS-S-4	7.08	2557	0.181	0.062	0.007	0.012	0.000000	0.000000	2143.45	171.64
2	FID	ACIS-S-6	7.21	2557	-0.072	0.033	0.008	0.013	0.000000	0.000000	392.78	809.60
3	GUIDE	840829824	9.48	5112	0.172	0.339	0.141	0.218	0.562188	-26.678555	-2186.35	-822.24
4	GUIDE	840831008	8.70	5113	0.176	0.000	0.133	0.198	0.855542	-26.415181	-849.55	-866.50
5	GUIDE	840832352	8.25	5105	-0.365	-0.243	0.104	0.154	0.775324	-25.261110	2014.08	2154.08
6	GUIDE	840833168	9.29	5086	0.097	-0.045	0.137	0.224	0.400325	-26.469934	-1994.18	71.90
7	GUIDE	840833360	9.19	5111	-0.044	-0.049	0.118	0.186	0.455843	-25.798534	-112.27	1590.98

## 2.4 Star Slots

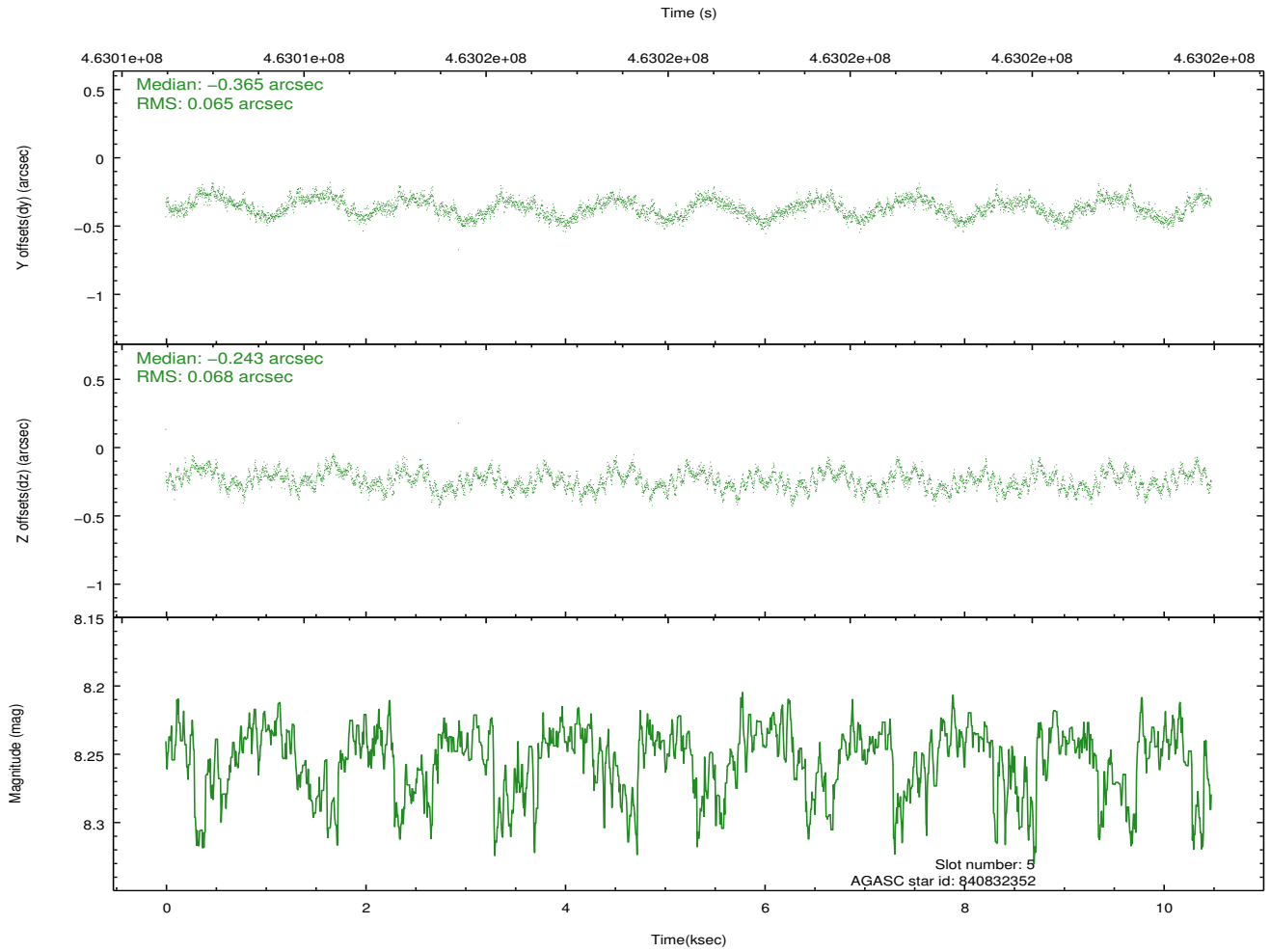
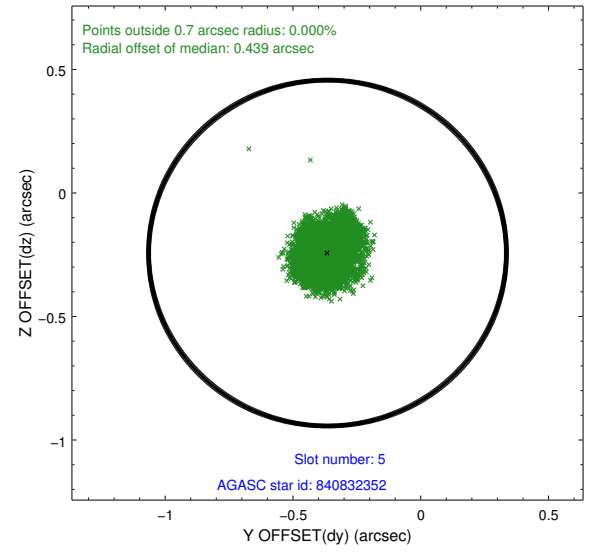
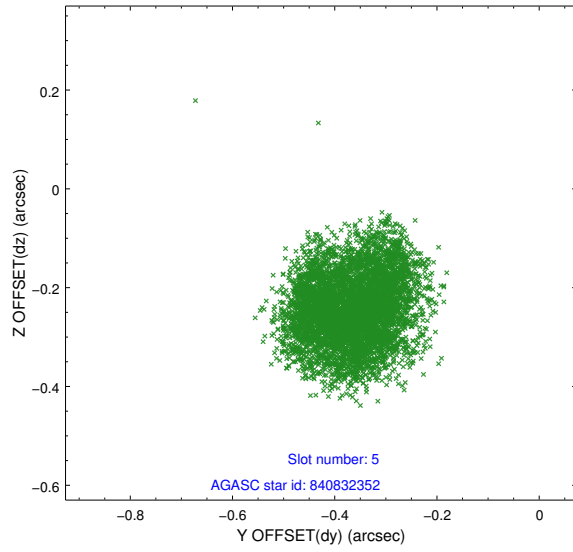
### 2.4.1 Slot 3



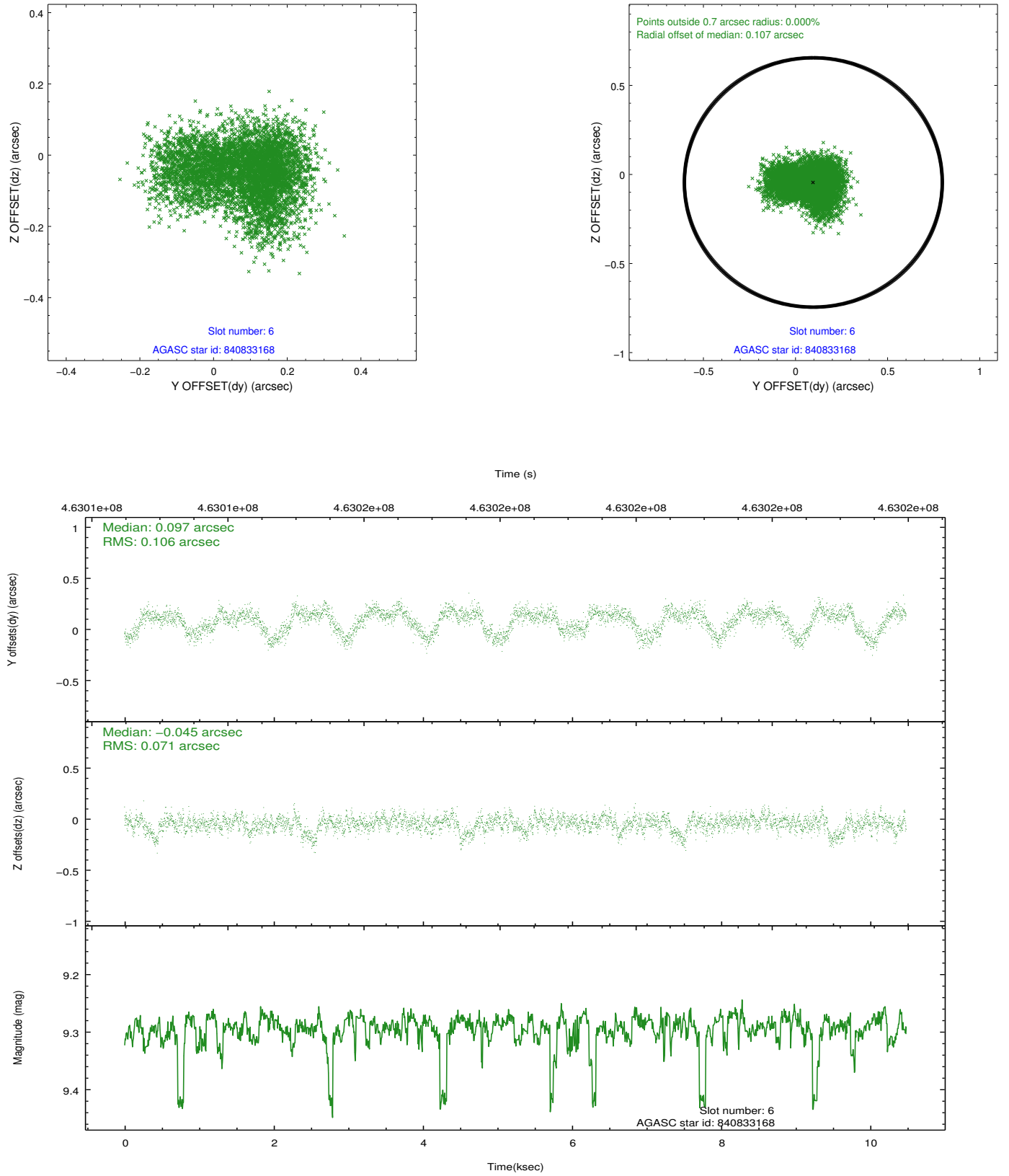
## 2.4.2 Slot 4



### 2.4.3 Slot 5

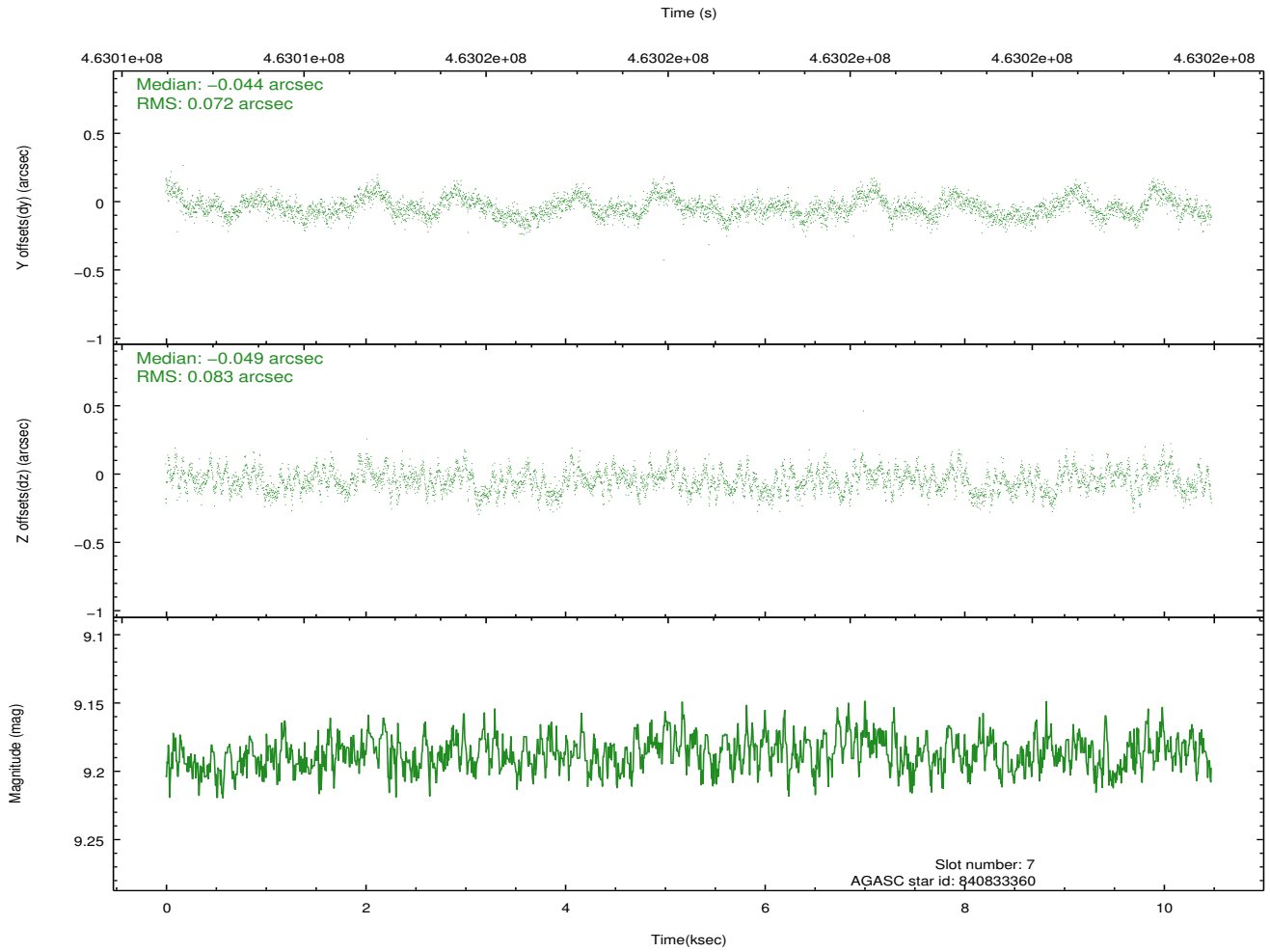
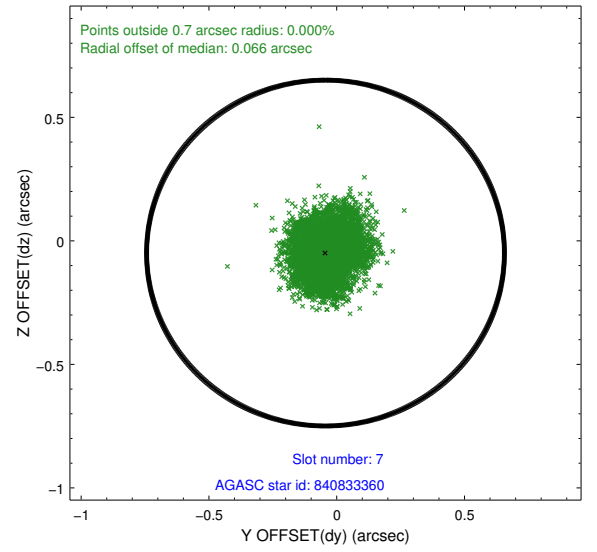
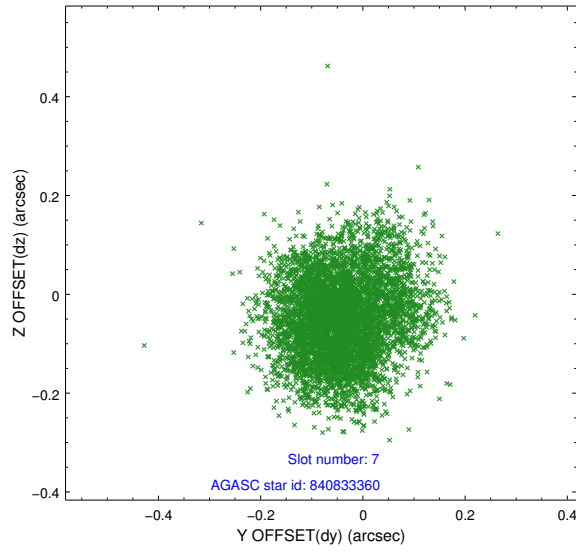


## 2.4.4 Slot 6



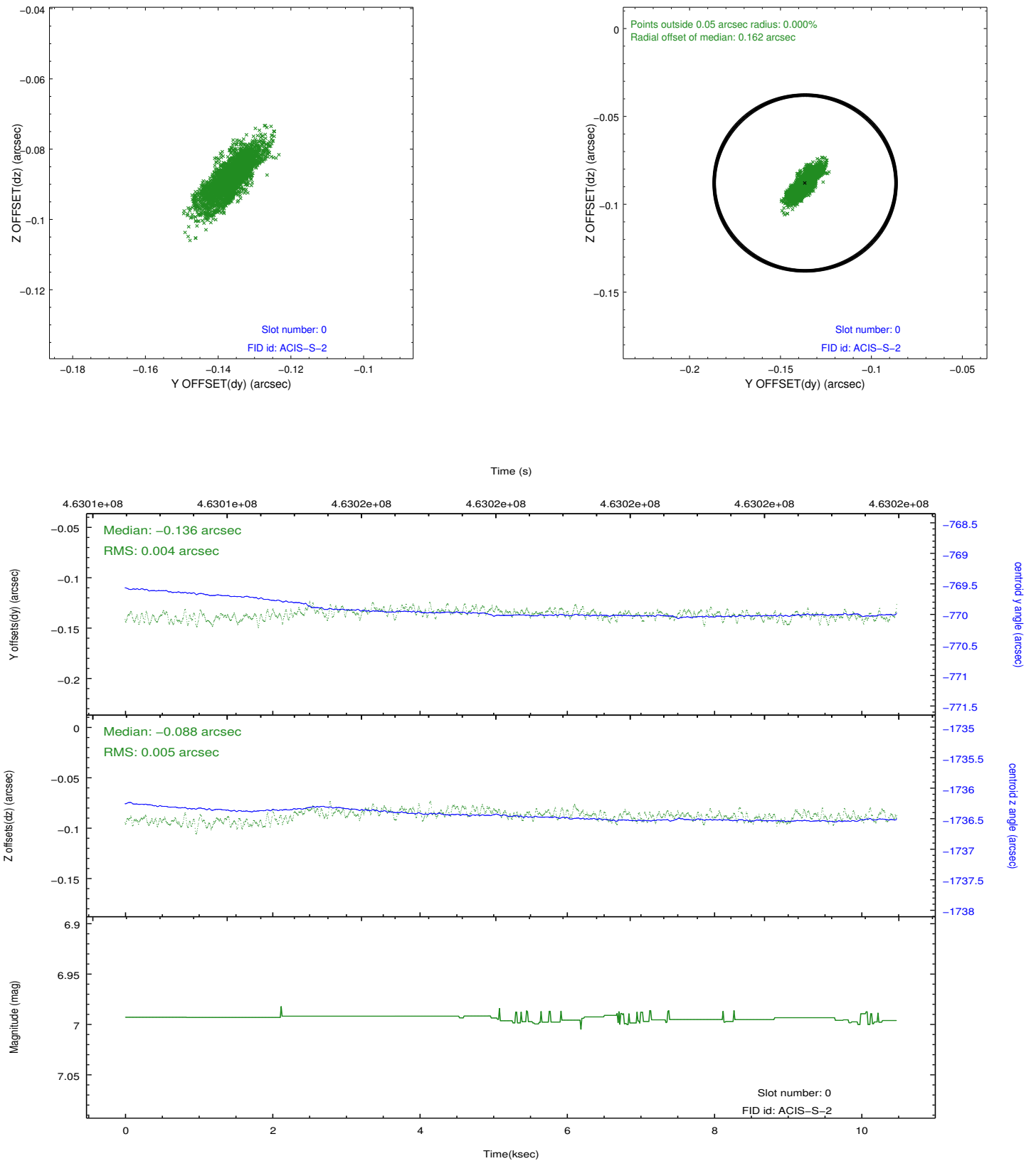


## 2.4.5 Slot 7

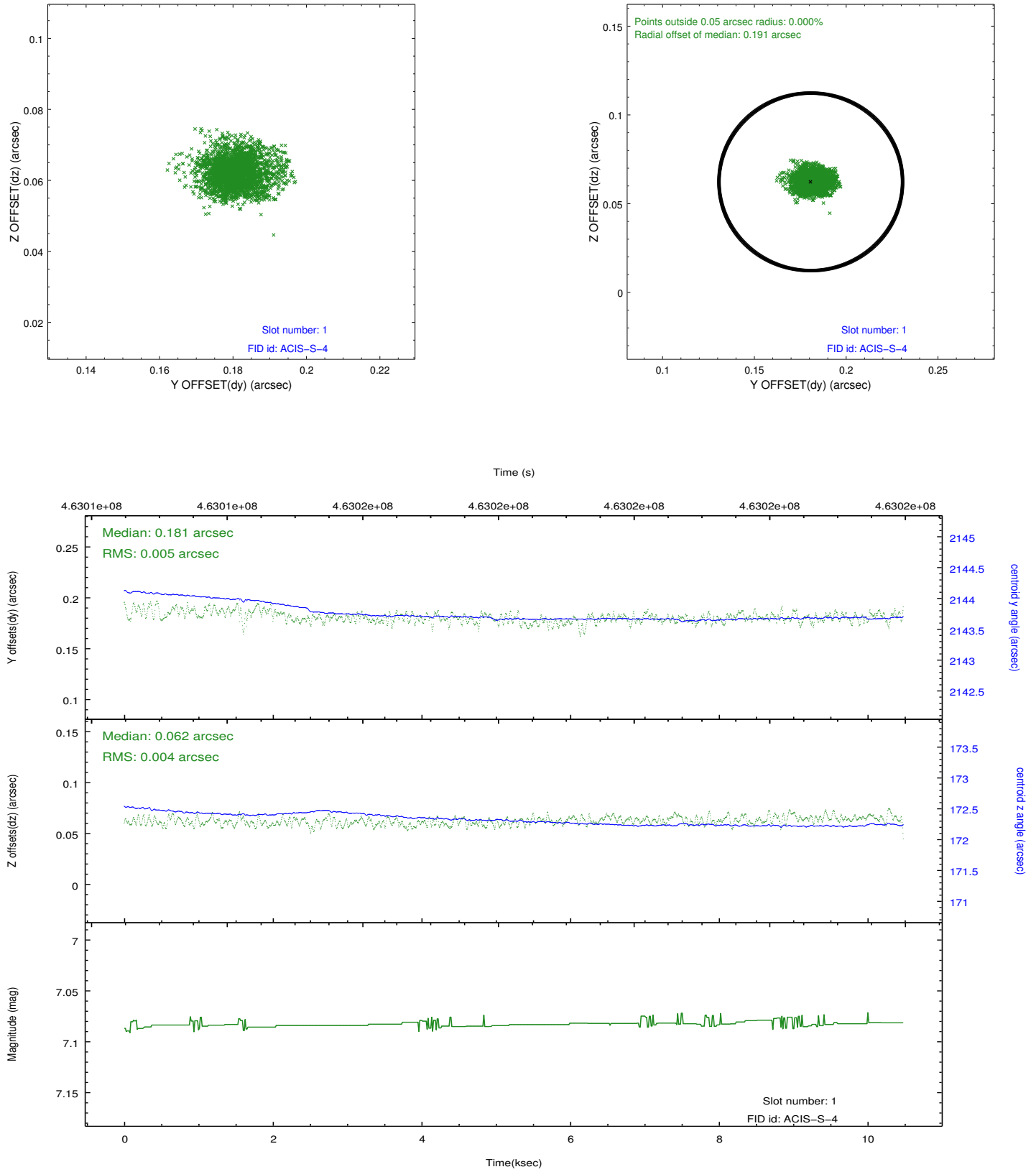


## 2.5 FID Slots

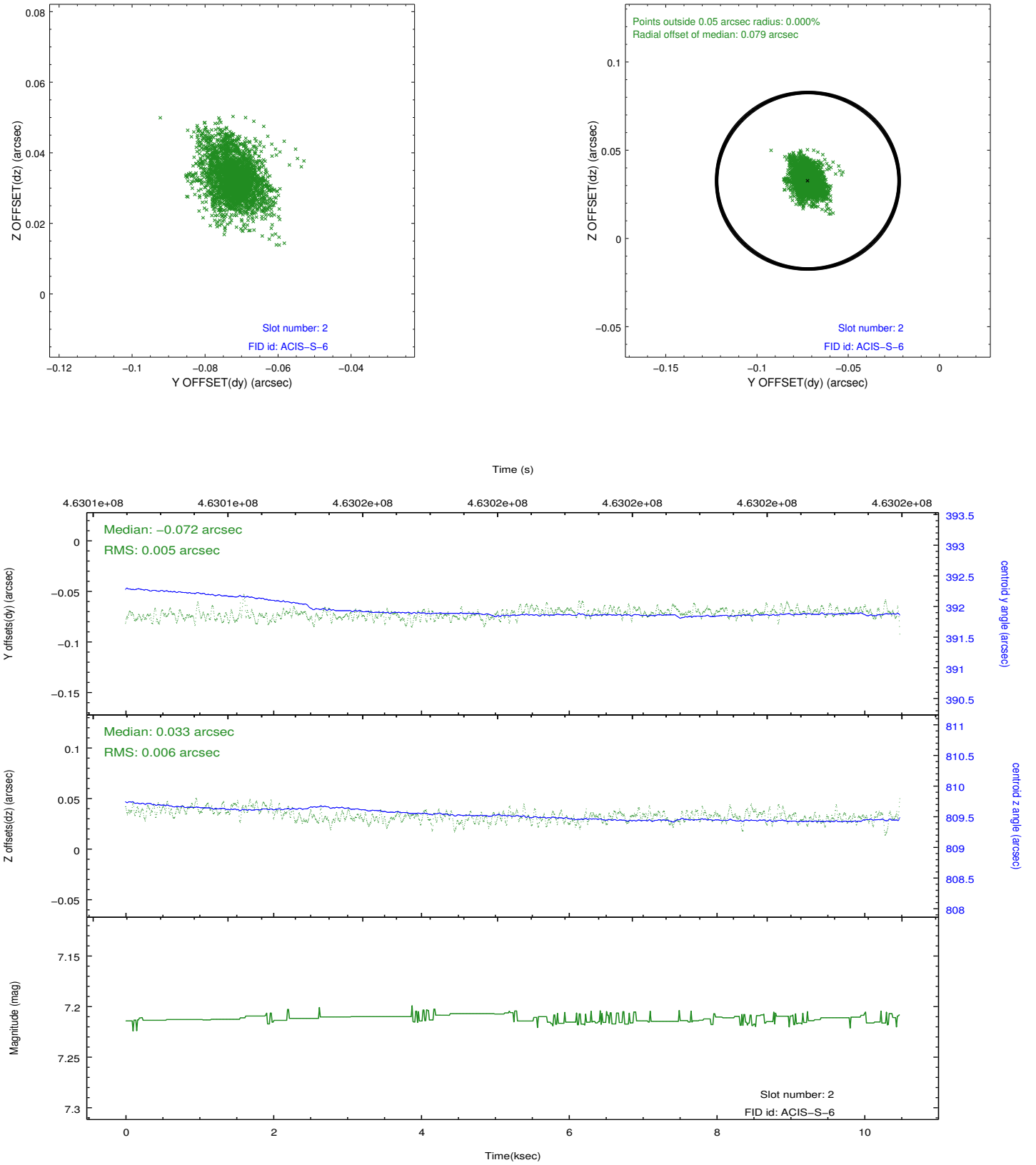
### 2.5.1 Slot 0



## 2.5.2 Slot 1



### 2.5.3 Slot 2



## A Summary

### A.1 Status

V&V Scientist	Joy Nichols
V&V Date (YYYY-MM-DD)	2012.09.04
V&V Edition	1
V&V Disposition and Status	OK
V&V Charge Time	10.059500077367

### A.2 Comments