

V&V Reference Report

L2 ASCDS Version : 8.4.5

Observation 11685 - L2 Version 2
Chandra X-Ray Center

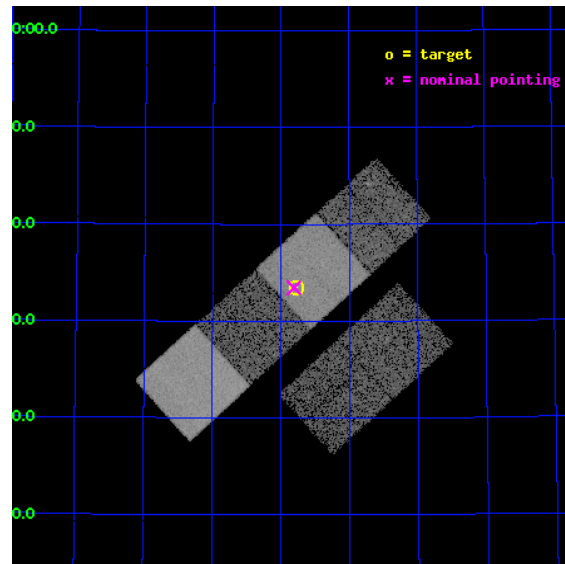
L2 Processing Date : Jun 21 2012

Contents

1	Front	2
2	OBI	3
2.1	OBI	3
2.1.1	Images	3
2.1.2	Bias	3
2.1.3	Parameters	4
2.1.4	Events	4
2.2	Compared Parameters	5
2.3	Aspect	6
2.4	Star Slots	9
2.4.1	Slot 3	9
2.4.2	Slot 4	10
2.4.3	Slot 5	11
2.4.4	Slot 6	12
2.4.5	Slot 7	13
2.5	FID Slots	14
2.5.1	Slot 0	14
2.5.2	Slot 1	15
2.5.3	Slot 2	16
A	Summary	17
A.1	Status	17
A.2	Comments	17

1 Front

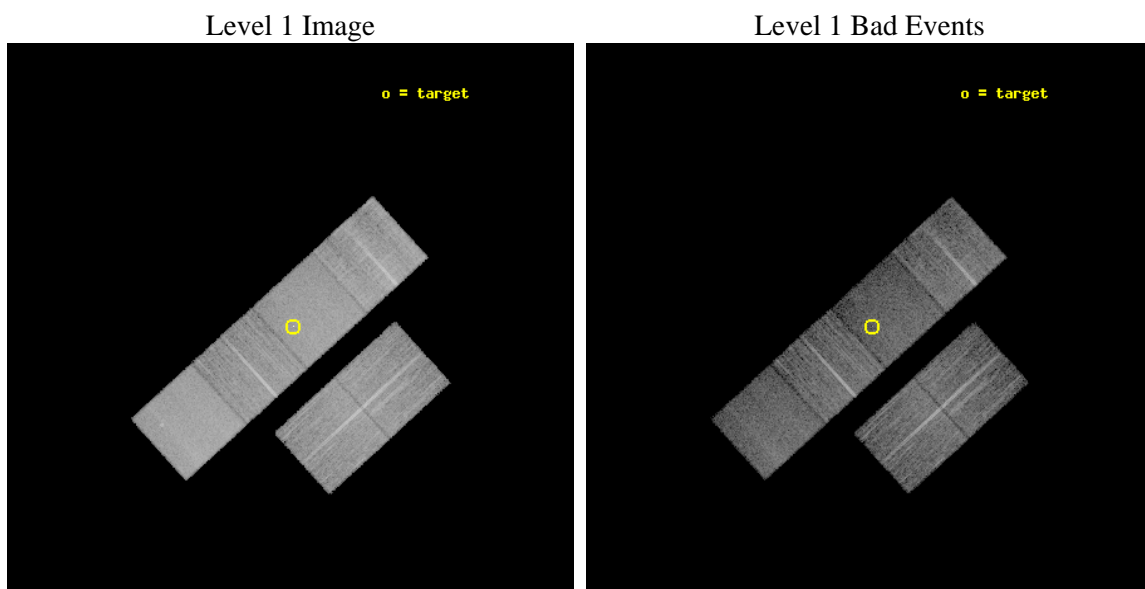
seq_num	702271	Sequence number
obs_id	11685	Observation id
title	Chandra ToO Observations of Flaring Fermi Blazars	Proposal title
observer	Dr Greg Madejski	Principal investigator
object	VCS2 J0109+6133	Source name
dtcycle	0	
cycle	P	events from which exps? Prim/Second/Both
ra_targ	17.443083	Observer's specified target RA [deg]
dec_targ	61.558461	Observer's specified target Dec [deg]
ra_nom	17.453033603193	Nominal RA [deg]
dec_nom	61.557573185006	Nominal Dec [deg]
roll_nom	317.61472119513	Nominal Roll [deg]
revision	2	Processing version of data
ontime	10041.599962652	Sum of GTIs [s]
livetime	9914.447177599	Livetime [s]
ontime2	10041.599962652	Sum of GTIs [s]
ontime3	10041.599962652	Sum of GTIs [s]
ontime5	10041.599962652	Sum of GTIs [s]
ontime6	10041.599962652	Sum of GTIs [s]
ontime7	10041.599962652	Sum of GTIs [s]
ontime8	10041.599962652	Sum of GTIs [s]
l2events	128926	Number of level 2 events



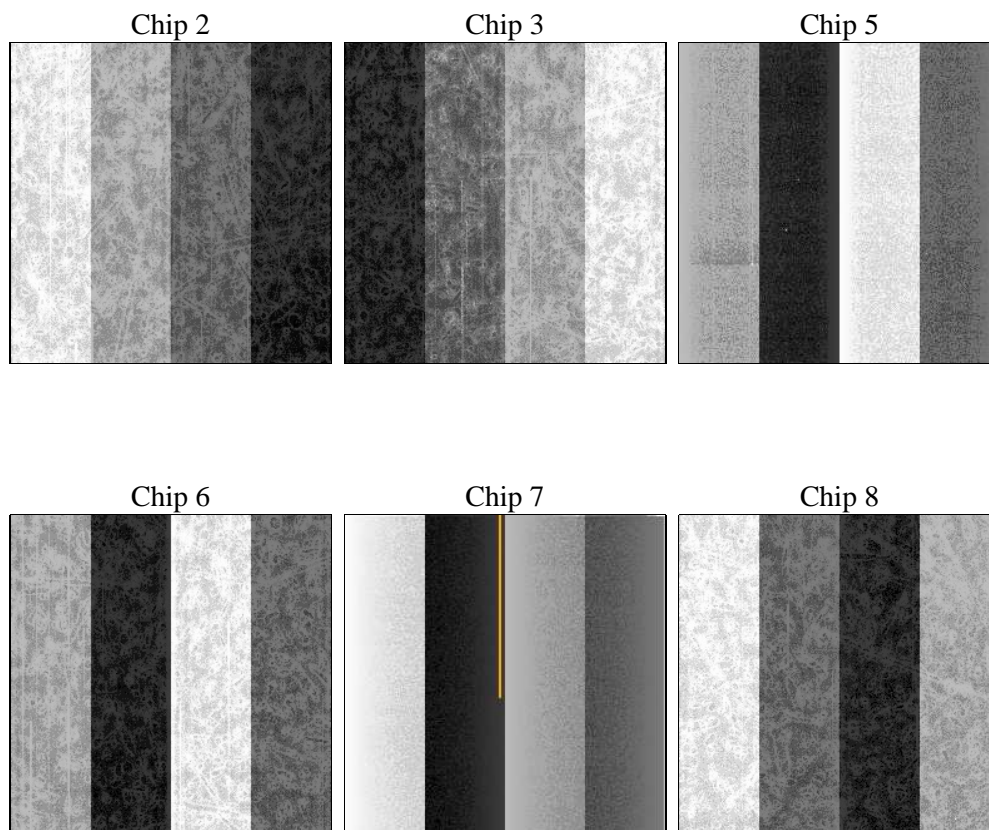
2 OBI

2.1 OBI

2.1.1 Images



2.1.2 Bias



2.1.3 Parameters

obi_num	0	Obi number	sched_exp_time	10000.000000	[s] Scheduled observation exposure time
ascdsver	8.4.5	Processing system revision	ontime	10041.599962652	Sum of GTIs [s]
caldsver	4.4.10	 	ontime2	10041.599962652	Sum of GTIs [s]
date	2012-06-21T16:11:58	Date and time of file creation	ontime3	10041.599962652	Sum of GTIs [s]
revision	2	Processing version of data	ontime5	10041.599962652	Sum of GTIs [s]
			ontime6	10041.599962652	Sum of GTIs [s]
			ontime7	10041.599962652	Sum of GTIs [s]
			ontime8	10041.599962652	Sum of GTIs [s]
			l1events	565121	Number of level 1 events

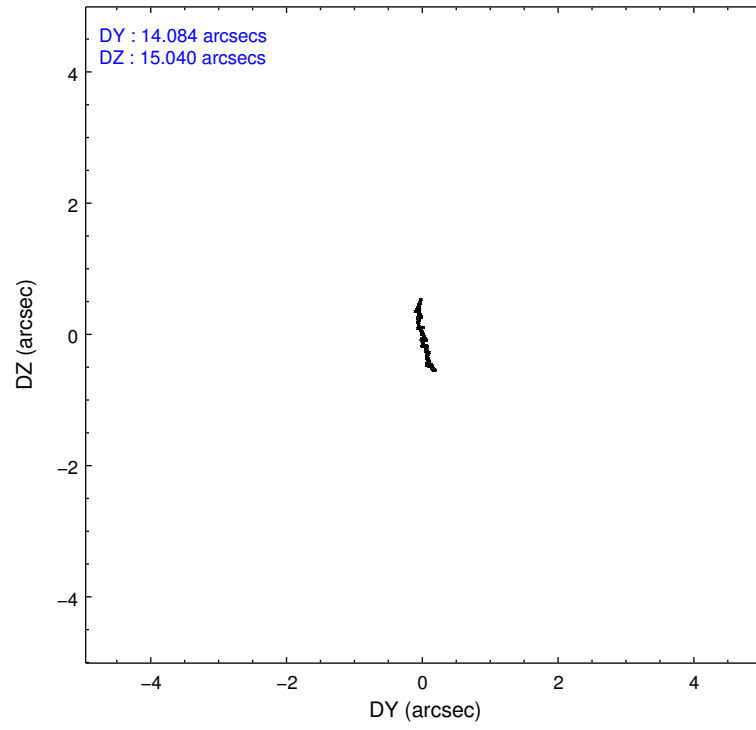
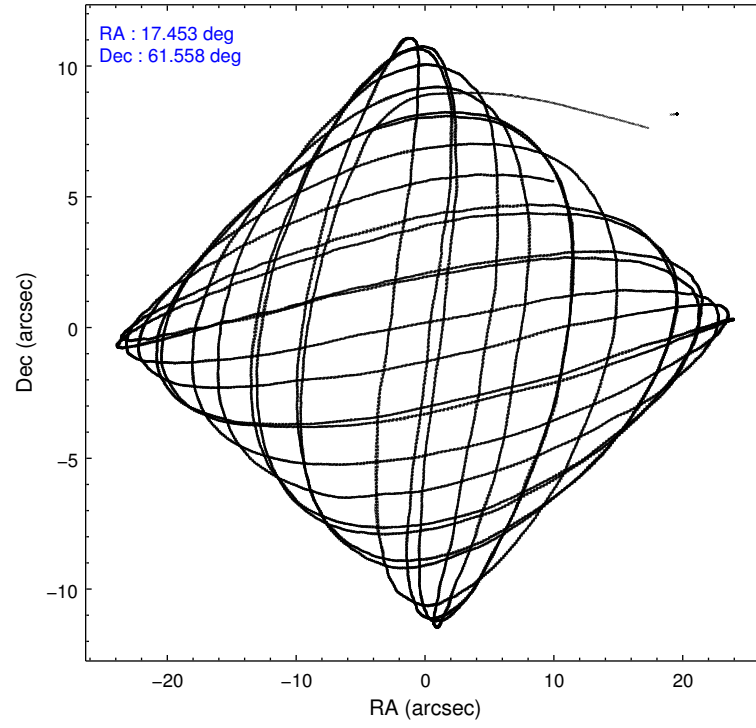
2.1.4 Events

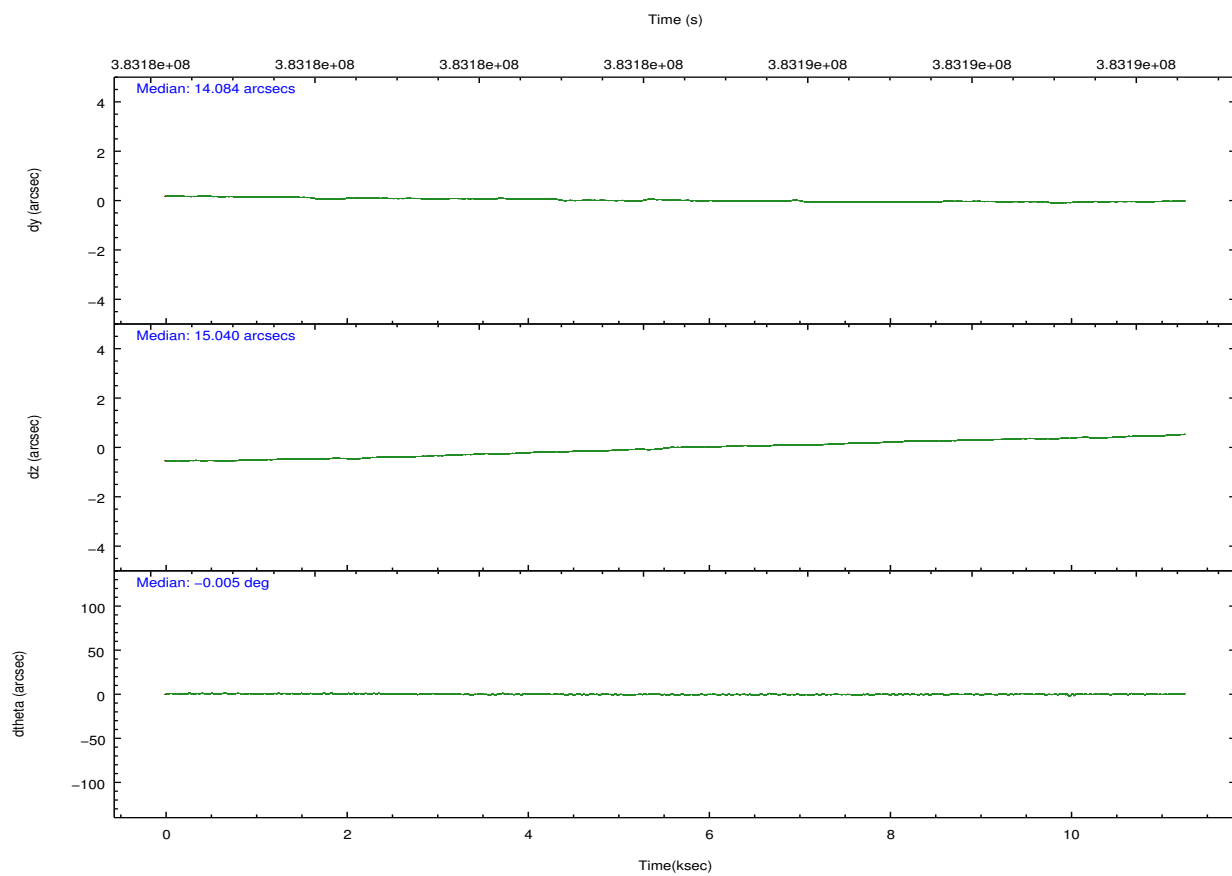
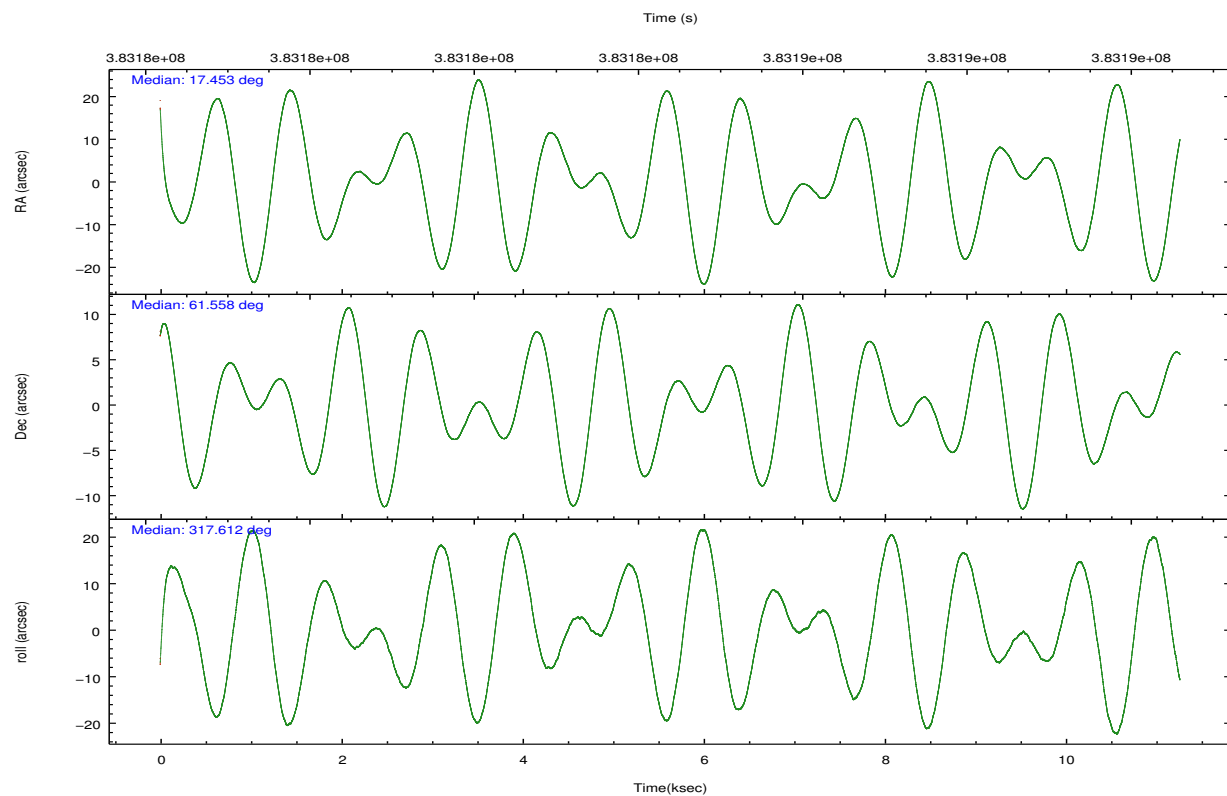
	ccd 2	ccd 3	ccd 5	ccd 6	ccd 7	ccd 8		ccd 2	ccd 3	ccd 5	ccd 6	ccd 7	ccd 8
level 1 events	85422	80417	116710	82086	96602	103884	grade 0 events	3023	2965	3552	3093	4211	8488
rejected events	77024	72440	59996	73175	52569	76566		3%	3%	3%	3%	4%	8%
rejected %	90%	90%	51%	89%	54%	73%	grade 1 events	63	53	211	41	121	108
								0%	0%	0%	0%	0%	0%
							grade 2 events	2064	1642	17380	1992	9084	6045
								2%	2%	14%	2%	9%	5%
							grade 3 events	861	884	2239	921	3820	3000
								1%	1%	1%	1%	3%	2%
							grade 4 events	862	872	2109	928	3817	2714
								1%	1%	1%	1%	3%	2%
							grade 5 events	2973	3450	8615	3403	9755	5005
								3%	4%	7%	4%	10%	4%
							grade 6 events	1590	1614	31451	1985	23116	7080
								1%	2%	26%	2%	23%	6%
							grade 7 events	73986	68937	51153	69723	42678	71444
								86%	85%	43%	84%	44%	68%

2.2 Compared Parameters

Parameter	Planned	Actual	Parameter	Planned	Actual
Instrument	ACIS	ACIS	Obspar format version number	7	7
Detector	ACIS-235678	ACIS-235678	Obspar file type	PREDICTED	ACTUAL
Grating	NONE	NONE	Obspar update status	NONE	UPDATED
Data mode	FAINT	FAINT	CCD I0 on	N	N
Observation mode	POINTING	POINTING	CCD I1 on	N	N
[deg] Pointing RA	17.396827	17.45303360319279	CCD I2 on	O1	Y
[deg] Pointing Dec	61.563045	61.55757318500577	CCD I3 on	O2	Y
[deg] Pointing Roll	317.507526	317.6147211951285	CCD S0 on	N	N
[mm] SIM focus pos	-0.684267	-0.6828225247311905	CCD S1 on	Y	Y
[mm] SIM defocus	0	0.001444936568705701	CCD S2 on	Y	Y
[mm] SIM translation stage pos	-190.132523	-190.1400660498719	CCD S3 on	Y	Y
[mm] SIM translation stage offset	0	0.00754346686406393	CCD S4 on	Y	Y
[s] Observation start time (MET)	383180005.184000	383177749.98887	CCD S5 on	N	N
Observation start date	2010-02-21T22:52:19	2010-02-21T22:15:49	Number of optional ACIS chips dropped	0	0
[s] Observation end time (MET)	383190005.184000	383191153.40205	On-chip summing requested	N	N
Observation end date	2010-02-22T01:38:59	2010-02-22T01:59:13	Subarray requested	NONE	NONE
Read mode	TIMED	TIMED	Alternating exposures requested	N	N
			[s] Primary exposure time	0.000000	3.2

2.3 Aspect



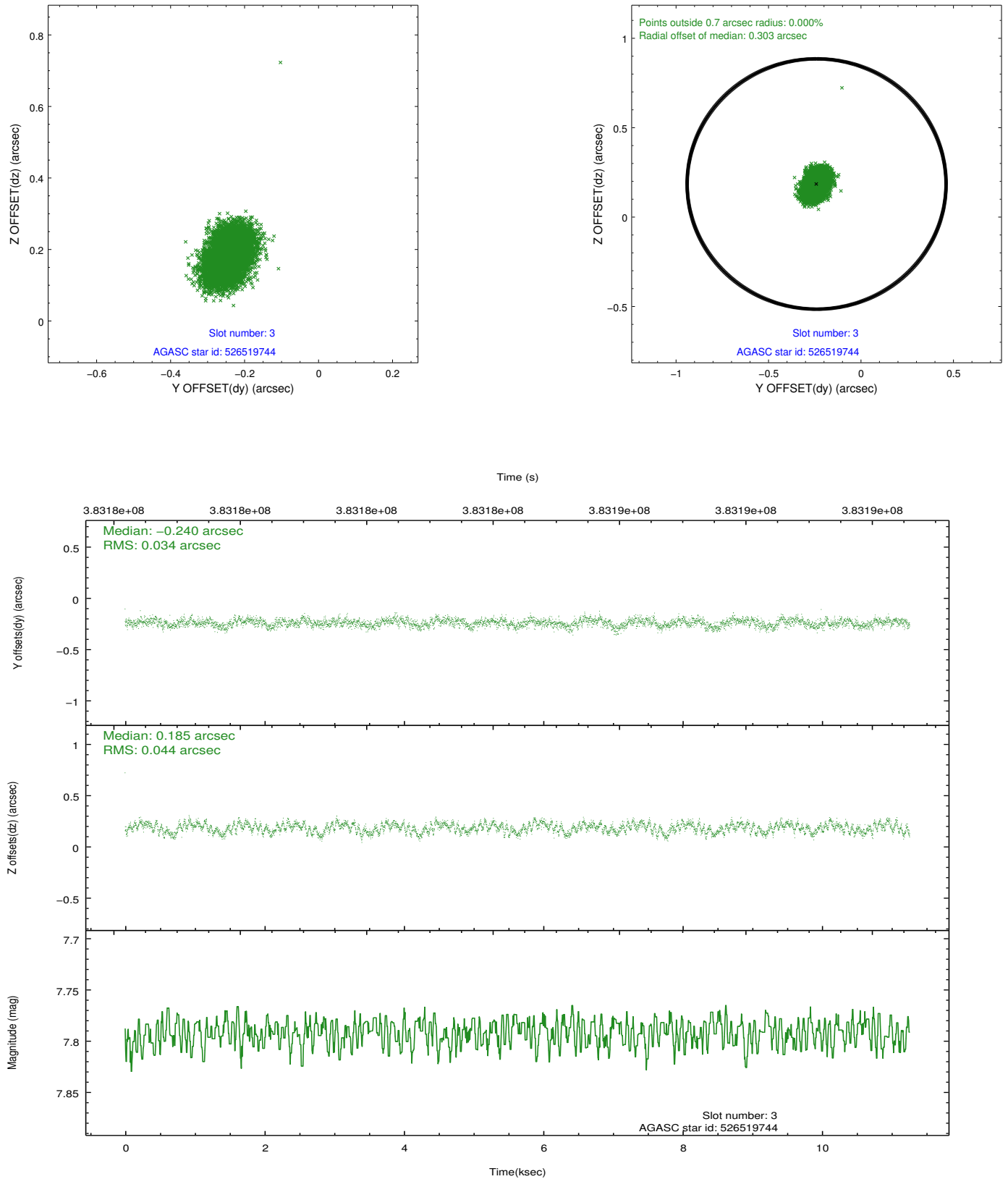


Slot Statistics

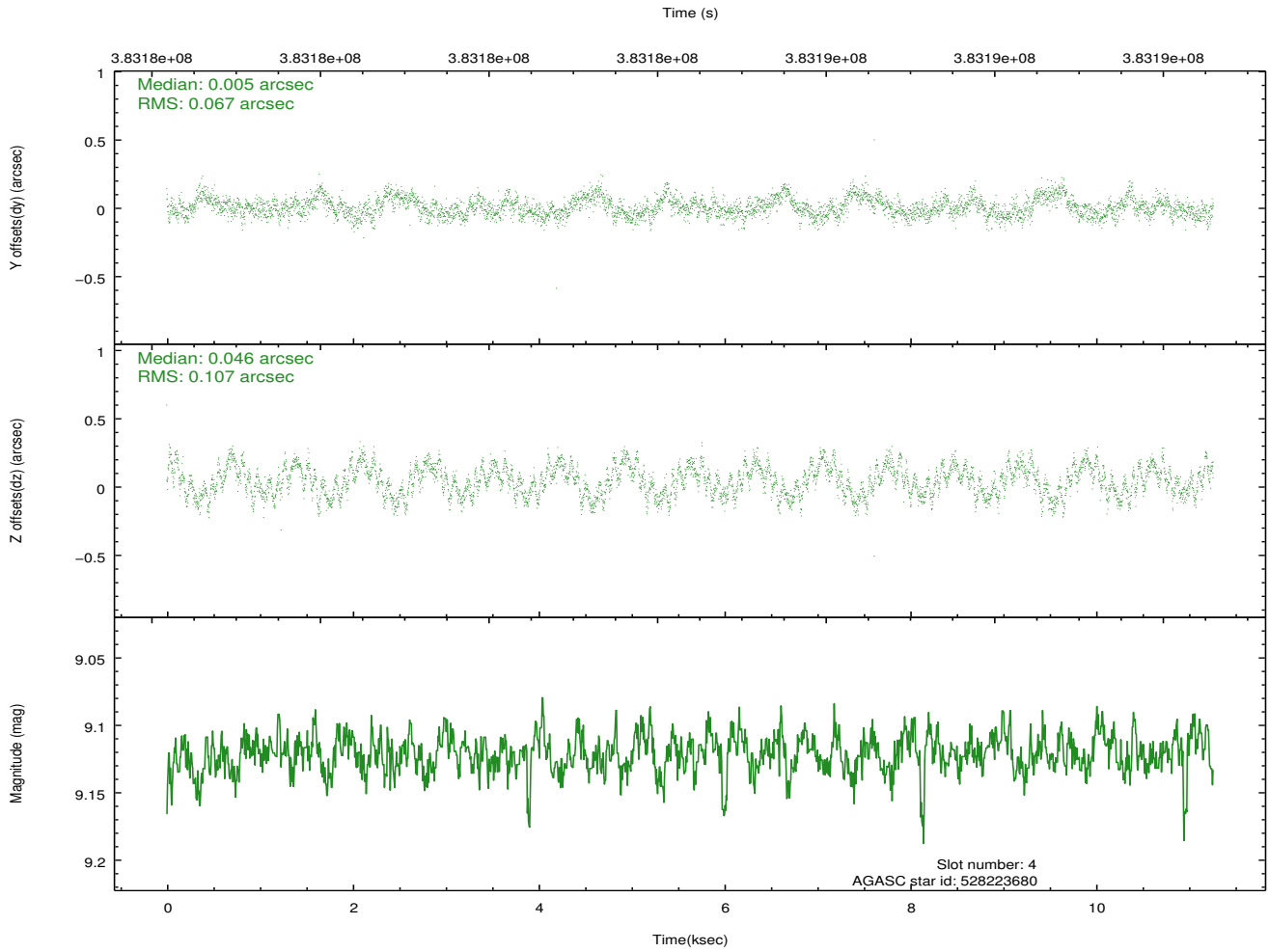
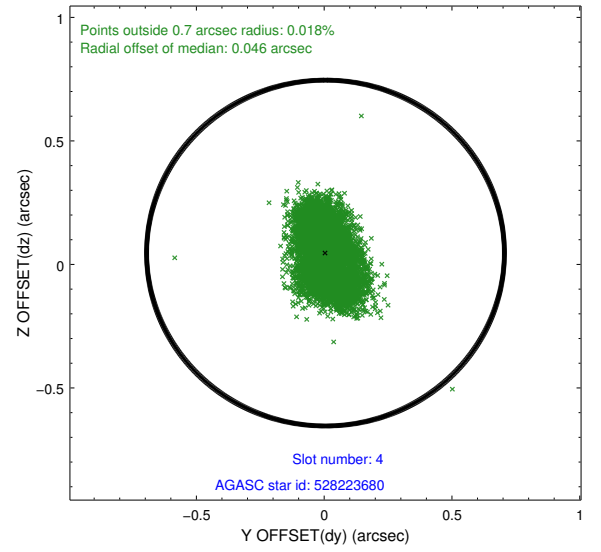
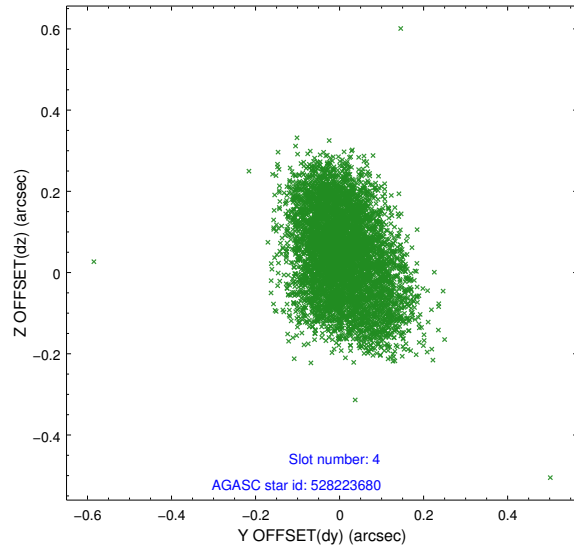
slot	status	id	mag	n_pts	med_dy	med_dz	dr1	dr2	ra	dec	mean_y	mean_z
0	FID	ACIS-S-2	6.94	2748	-0.072	-0.020	0.010	0.017	0.000000	0.000000	-767.10	-1736.41
1	FID	ACIS-S-4	7.02	2748	0.187	0.040	0.006	0.010	0.000000	0.000000	2146.20	171.71
2	FID	ACIS-S-5	7.05	2748	-0.147	-0.011	0.008	0.013	0.000000	0.000000	-1819.46	165.79
3	GUIDE	526519744	7.79	5494	-0.240	0.185	0.060	0.094	16.228892	61.720553	-1863.69	-913.95
4	GUIDE	528223680	9.12	5490	0.005	0.046	0.137	0.213	18.149290	61.775202	423.67	1434.13
5	GUIDE	528224064	8.66	5495	0.003	-0.053	0.079	0.127	17.542151	61.808143	-413.37	818.14
6	GUIDE	528225312	9.17	5486	-0.062	-0.094	0.089	0.146	17.470906	61.019295	1417.83	-1355.73
7	GUIDE	526521360	8.91	5487	0.300	-0.076	0.089	0.140	15.650464	61.586838	-2289.54	-1928.05

2.4 Star Slots

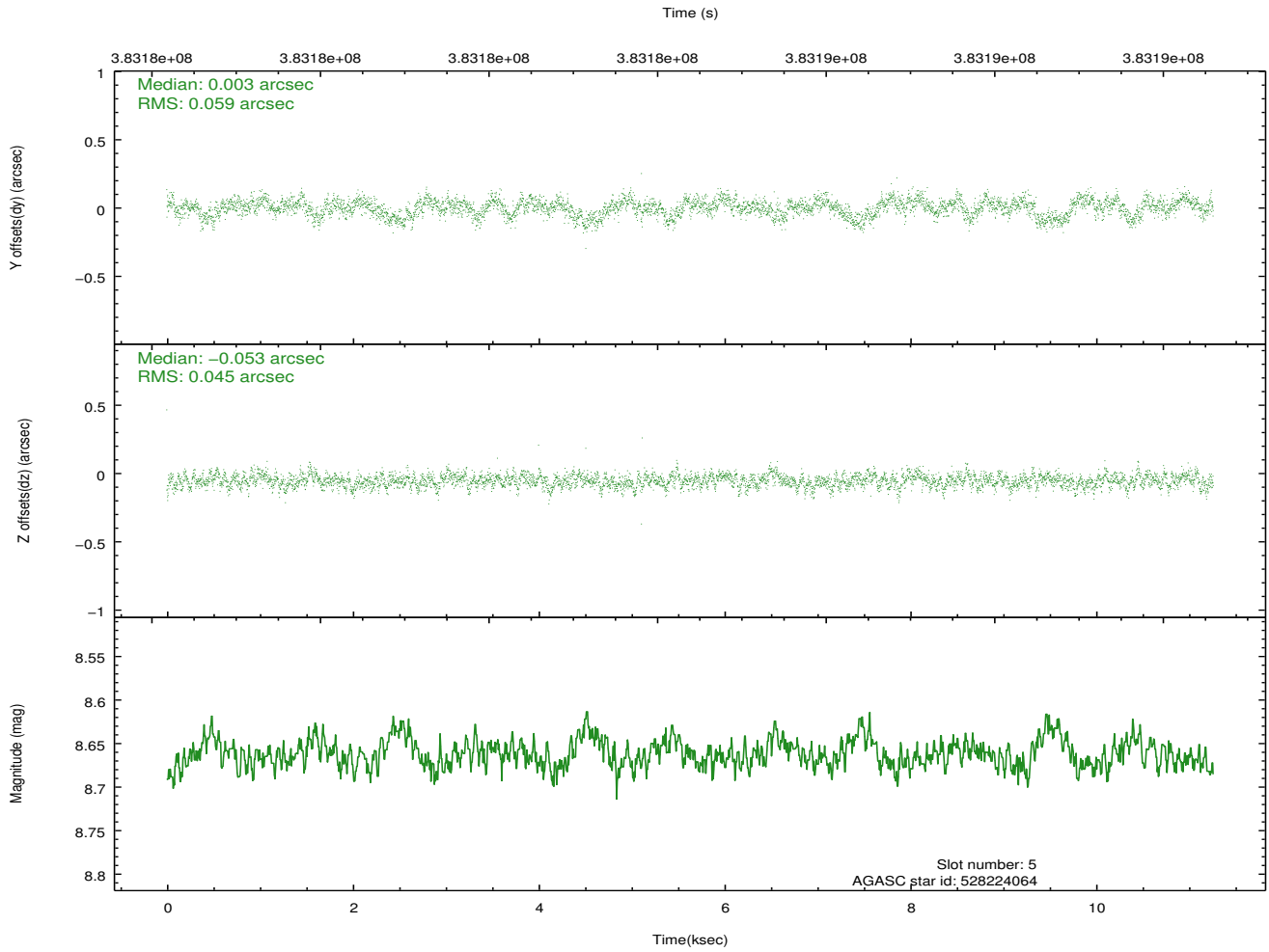
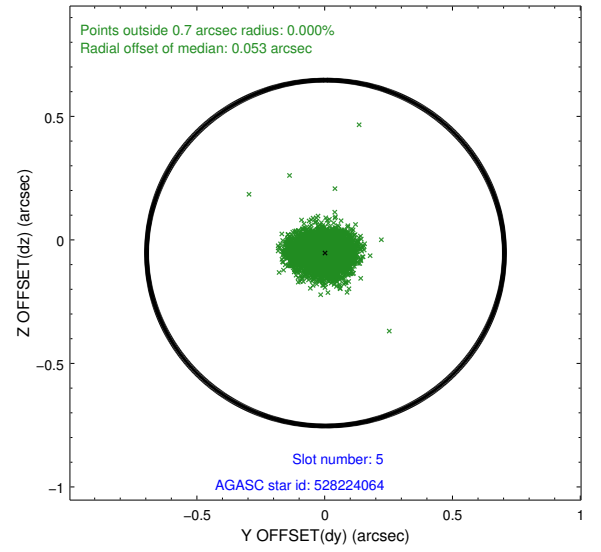
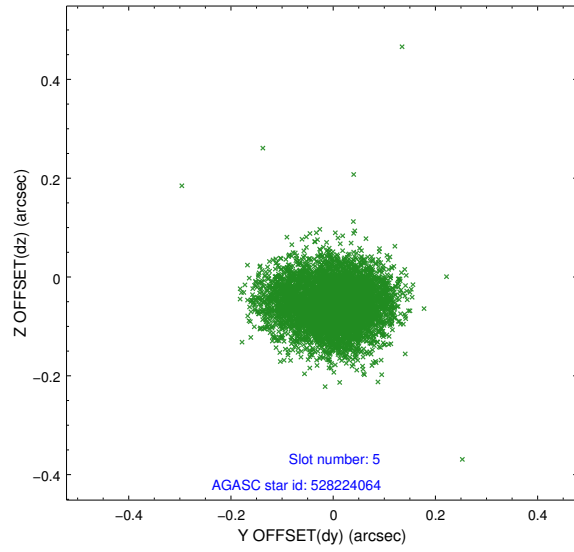
2.4.1 Slot 3



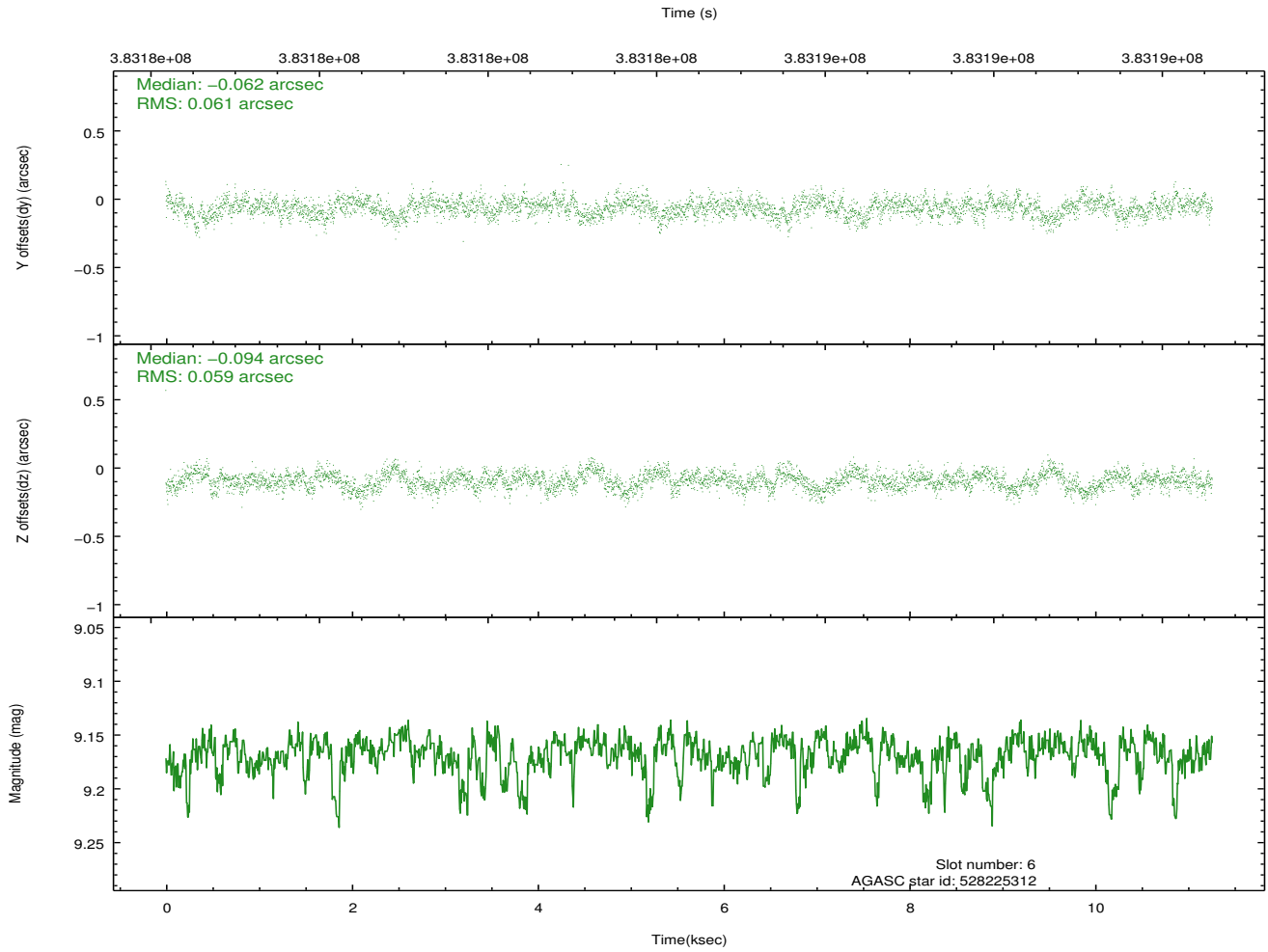
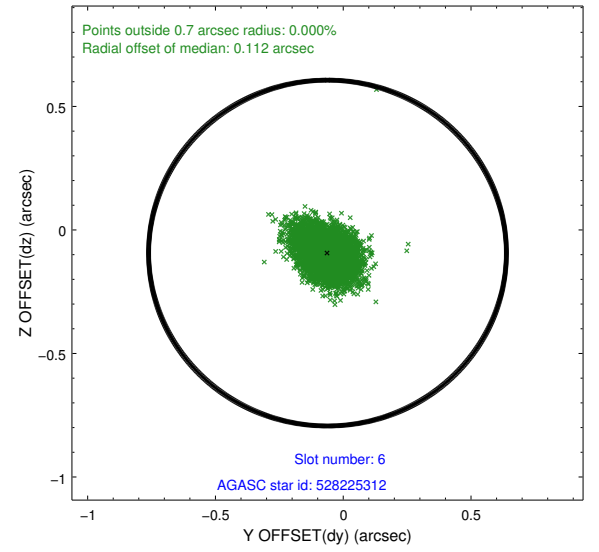
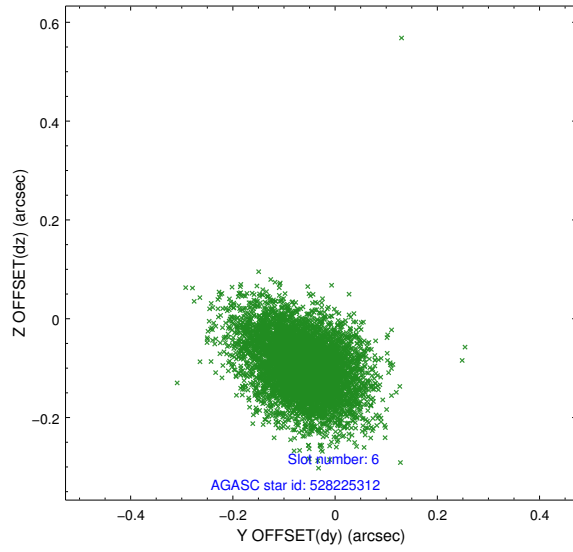
2.4.2 Slot 4



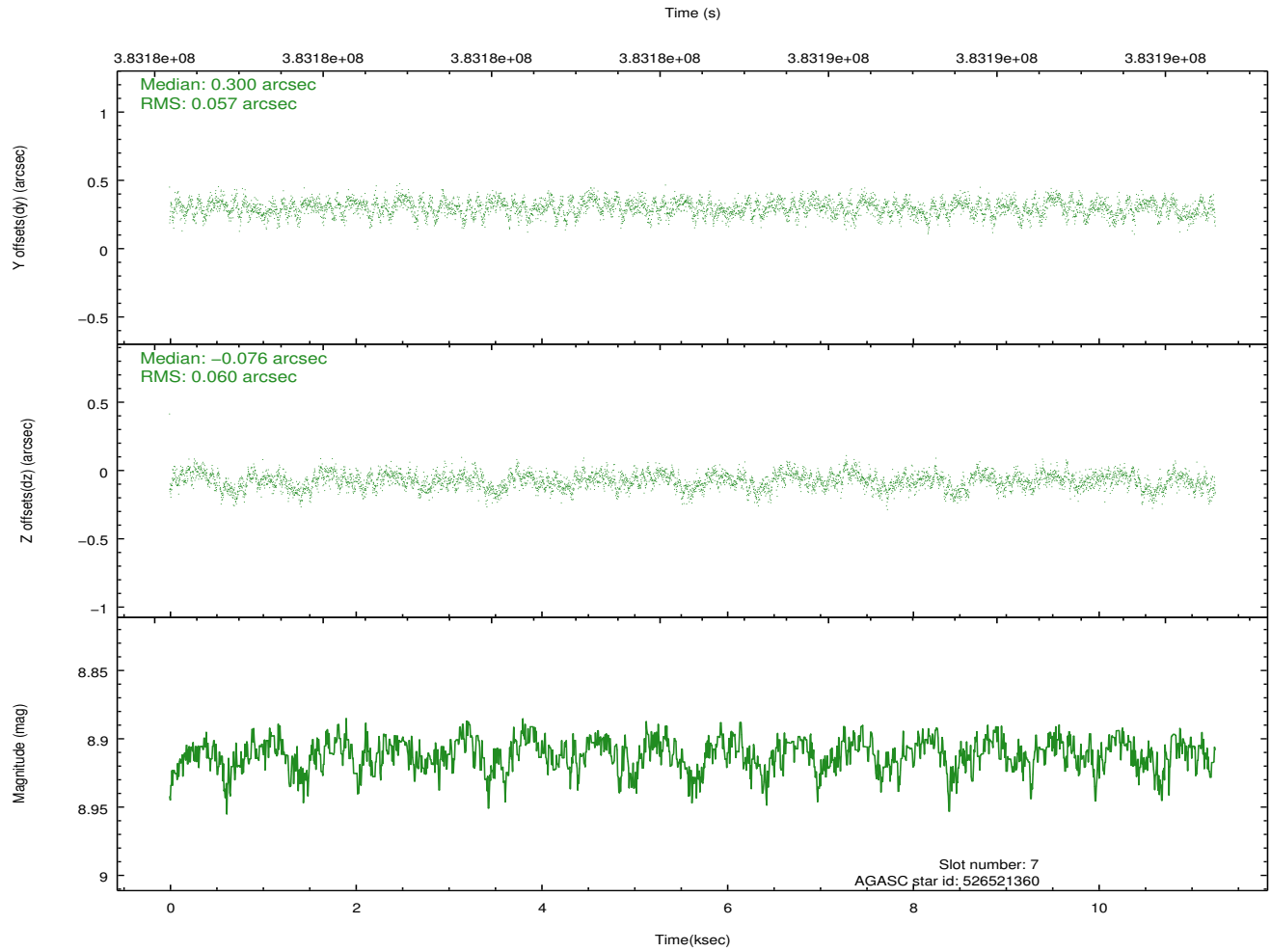
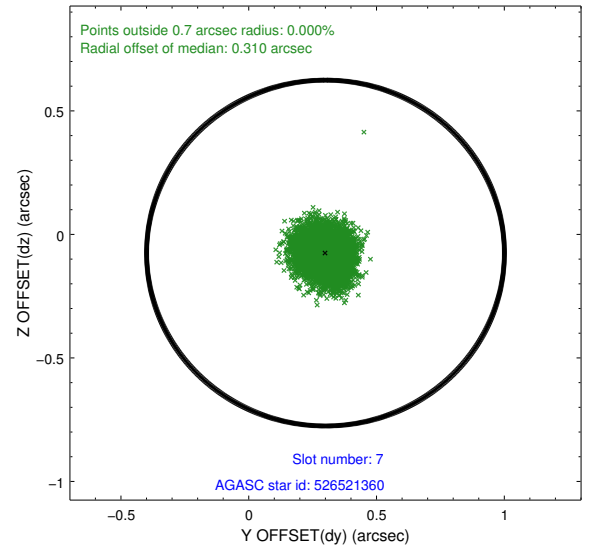
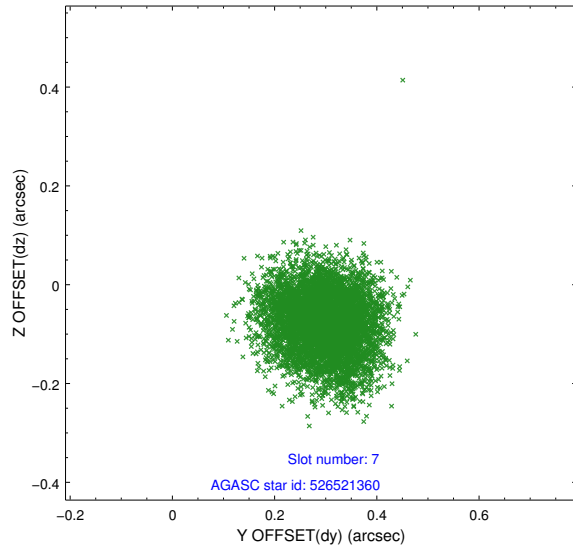
2.4.3 Slot 5



2.4.4 Slot 6

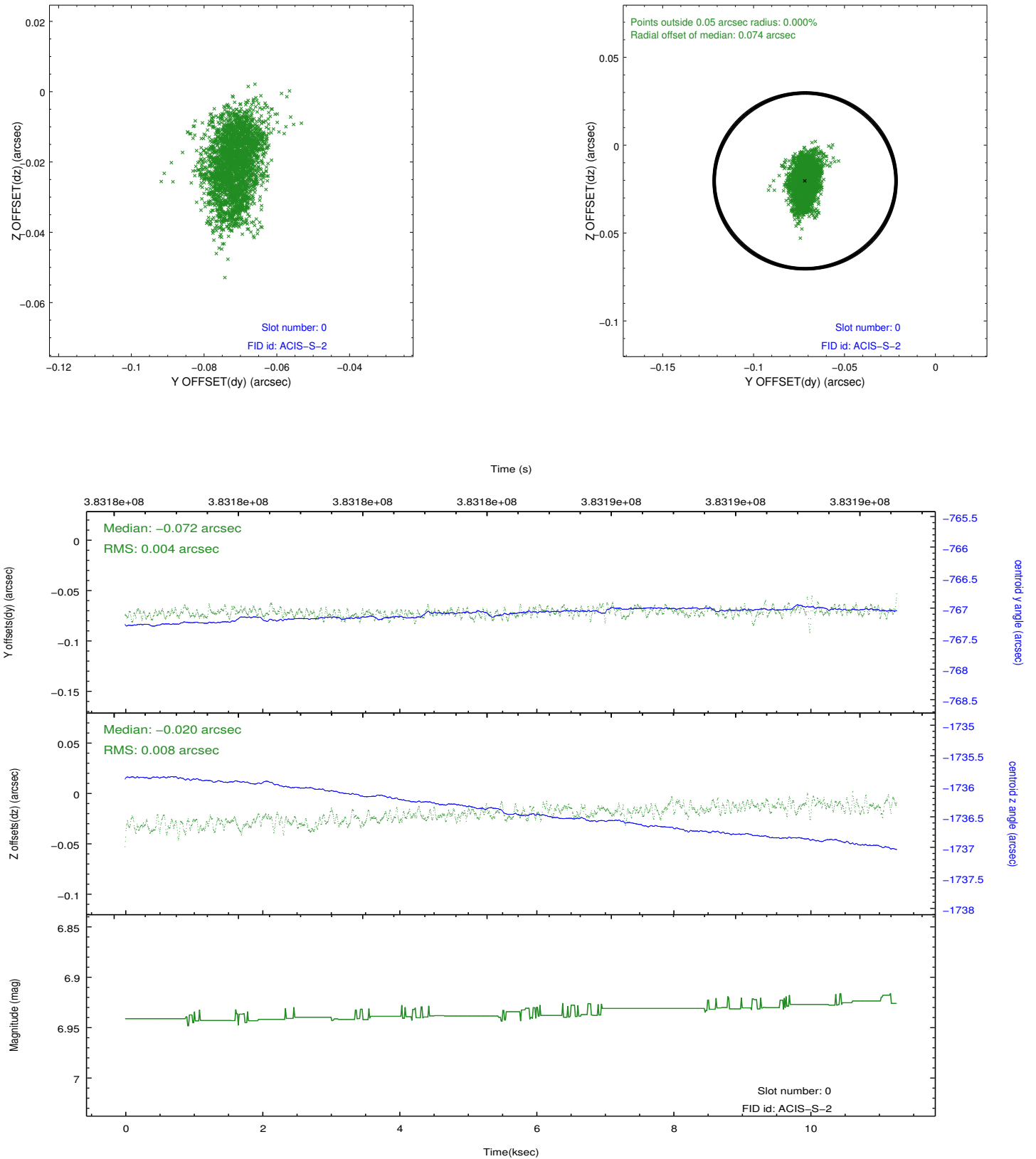


2.4.5 Slot 7

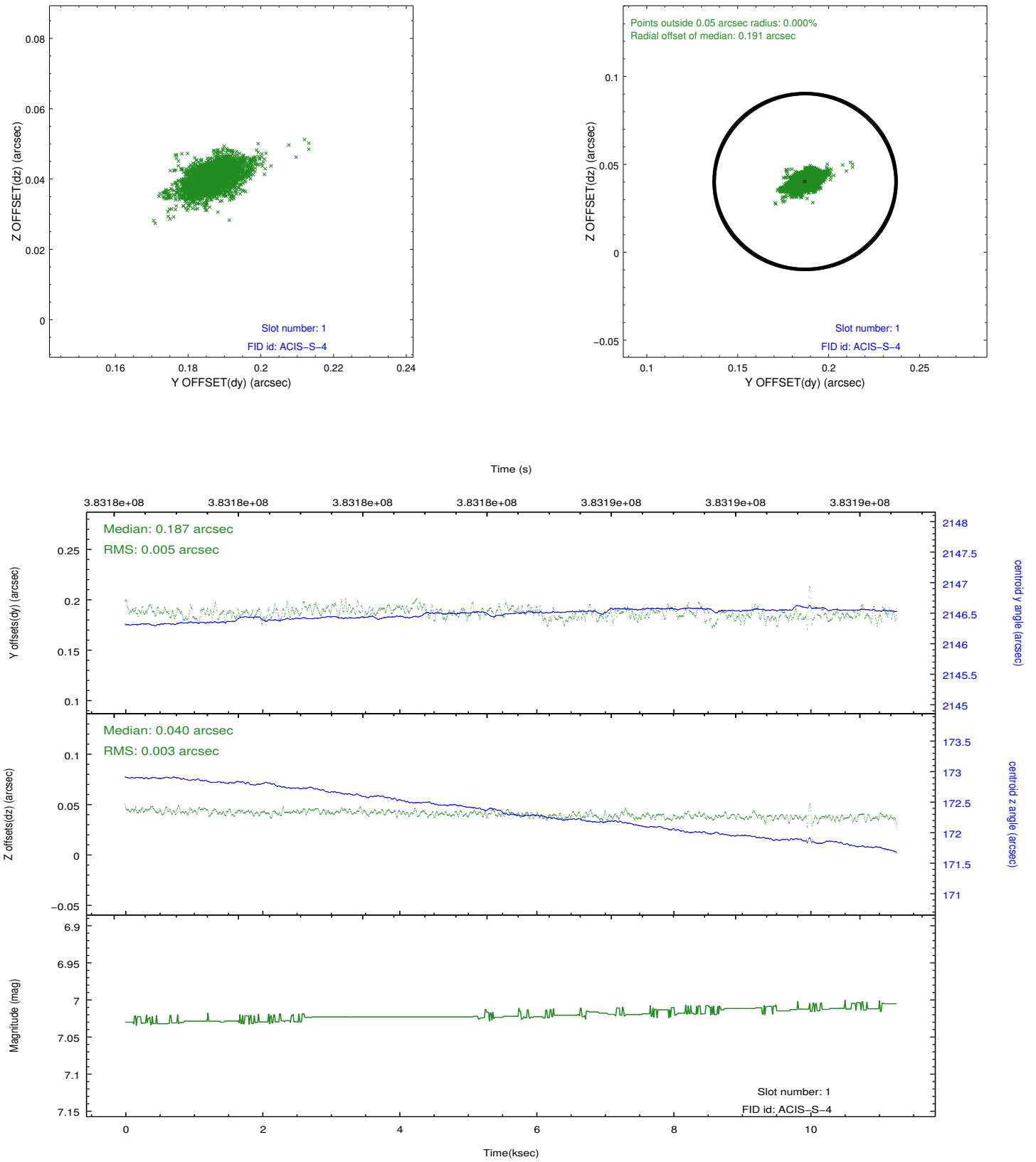


2.5 FID Slots

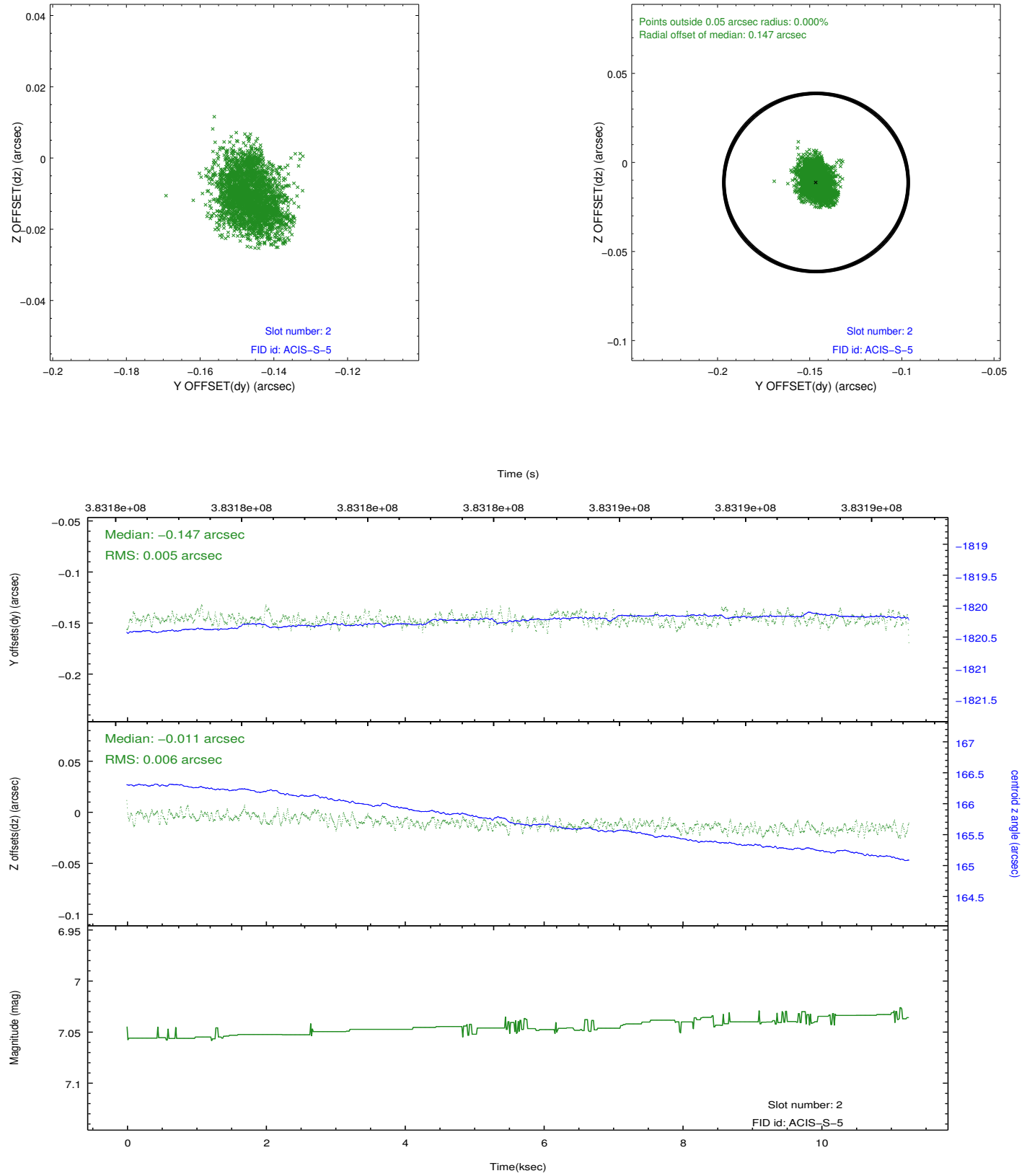
2.5.1 Slot 0



2.5.2 Slot 1



2.5.3 Slot 2



A Summary

A.1 Status

V&V Scientist	Beth Sundheim
V&V Date (YYYY-MM-DD)	2012.06.27
V&V Edition	1
V&V Disposition and Status	OK
V&V Charge Time	10.041599962652

A.2 Comments