

V&V Reference Report

L2 ASCDS Version : 8.4.5

Observation 11675 - L2 Version 2
Chandra X-Ray Center

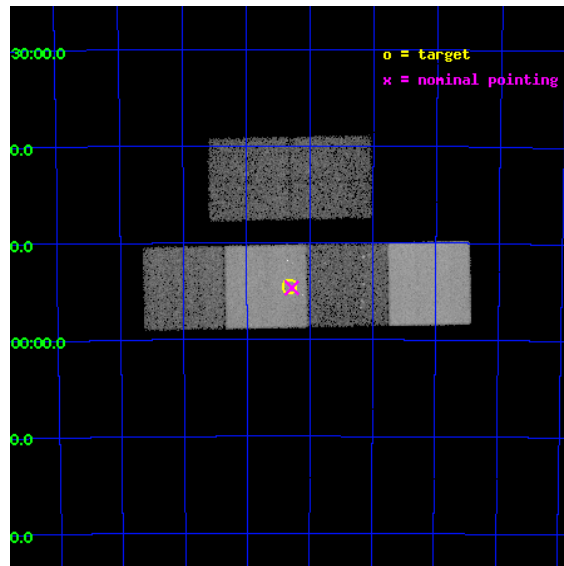
L2 Processing Date : Jun 21 2012

Contents

1	Front	2
2	OBI	3
2.1	OBI	3
2.1.1	Images	3
2.1.2	Bias	3
2.1.3	Parameters	4
2.1.4	Events	4
2.2	Compared Parameters	5
2.3	Aspect	6
2.4	Star Slots	9
2.4.1	Slot 3	9
2.4.2	Slot 4	10
2.4.3	Slot 5	11
2.4.4	Slot 6	12
2.4.5	Slot 7	13
2.5	FID Slots	14
2.5.1	Slot 0	14
2.5.2	Slot 1	15
2.5.3	Slot 2	16
A	Summary	17
A.1	Status	17
A.2	Comments	17

1 Front

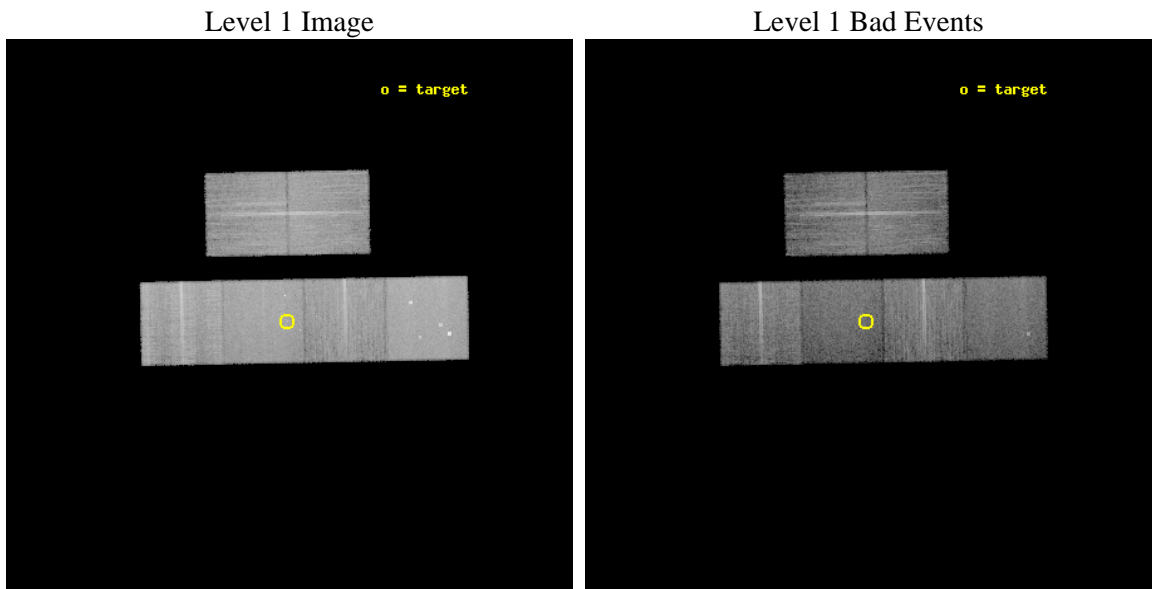
seq_num	702261	Sequence number
obs_id	11675	Observation id
title	Investigating the Nuclear Activity of Barred and Unbarred Spiral Galaxies	Proposal title
observer	Dr Leigh Jenkins	Principal investigator
object	NGC 7096	Source name
dtcycle	0	
cycle	P	events from which exps? Prim/Second/Both
ra_targ	325.330333	Observer's specified target RA [deg]
dec_targ	-63.908694	Observer's specified target Dec [deg]
ra_nom	325.32085426362	Nominal RA [deg]
dec_nom	-63.911131680658	Nominal Dec [deg]
roll_nom	178.86485937647	Nominal Roll [deg]
revision	2	Processing version of data
ontime	15123.199943721	Sum of GTIs [s]
livetime	14931.700879936	Livetime [s]
ontime2	15123.199943721	Sum of GTIs [s]
ontime3	15123.199943721	Sum of GTIs [s]
ontime5	15123.199943721	Sum of GTIs [s]
ontime6	15123.199943721	Sum of GTIs [s]
ontime7	15123.199943721	Sum of GTIs [s]
ontime8	15123.199943721	Sum of GTIs [s]
l2events	195287	Number of level 2 events



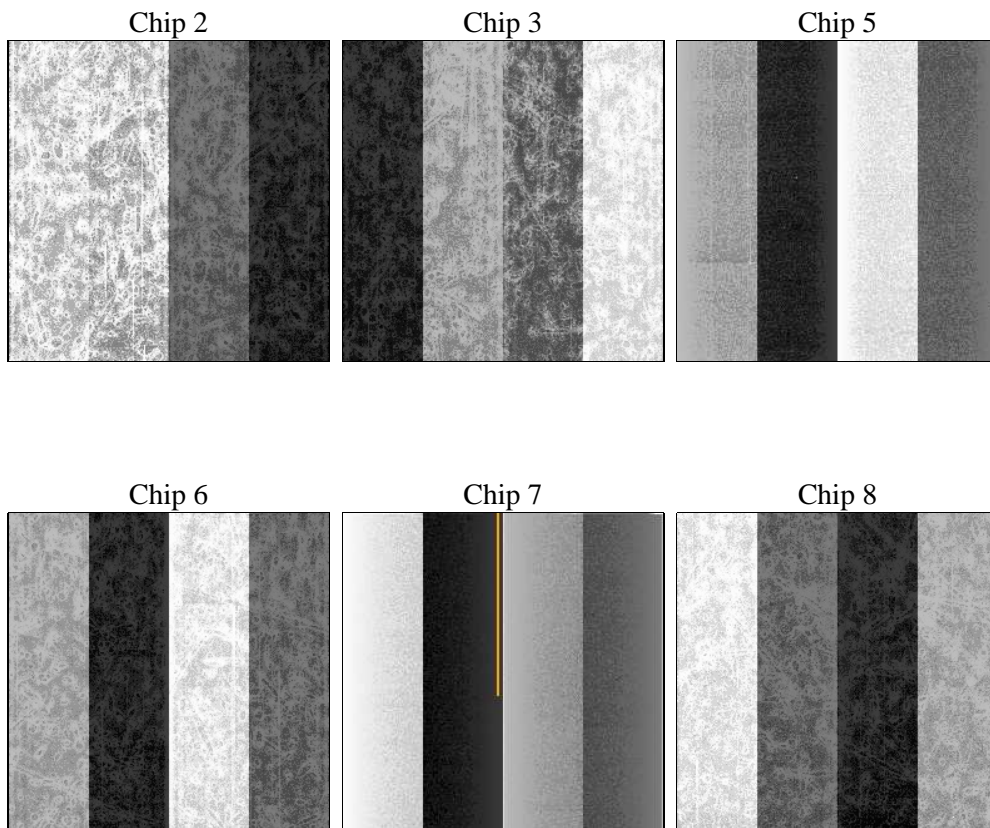
2 OBI

2.1 OBI

2.1.1 Images



2.1.2 Bias



2.1.3 Parameters

obi_num	0	Obi number	sched_exp_time	15000.000000	[s] Scheduled observation exposure time
ascdsver	8.4.5	Processing system revision	ontime	15123.199943721	Sum of GTIs [s]
caldsver	4.4.10	 	ontime2	15123.199943721	Sum of GTIs [s]
date	2012-06-21T02:29:46	Date and time of file creation	ontime3	15123.199943721	Sum of GTIs [s]
revision	2	Processing version of data	ontime5	15123.199943721	Sum of GTIs [s]
			ontime6	15123.199943721	Sum of GTIs [s]
			ontime7	15123.199943721	Sum of GTIs [s]
			ontime8	15123.199943721	Sum of GTIs [s]
			l1events	916478	Number of level 1 events

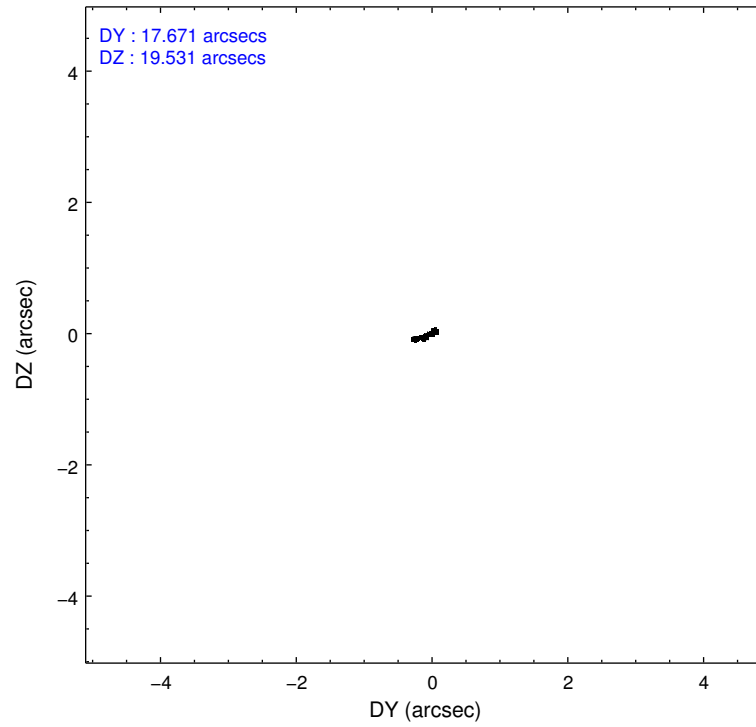
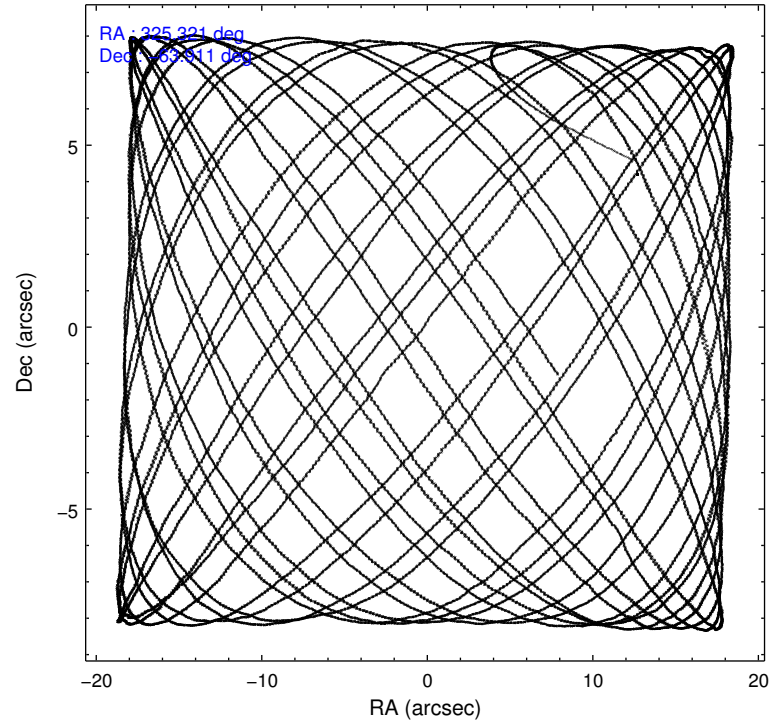
2.1.4 Events

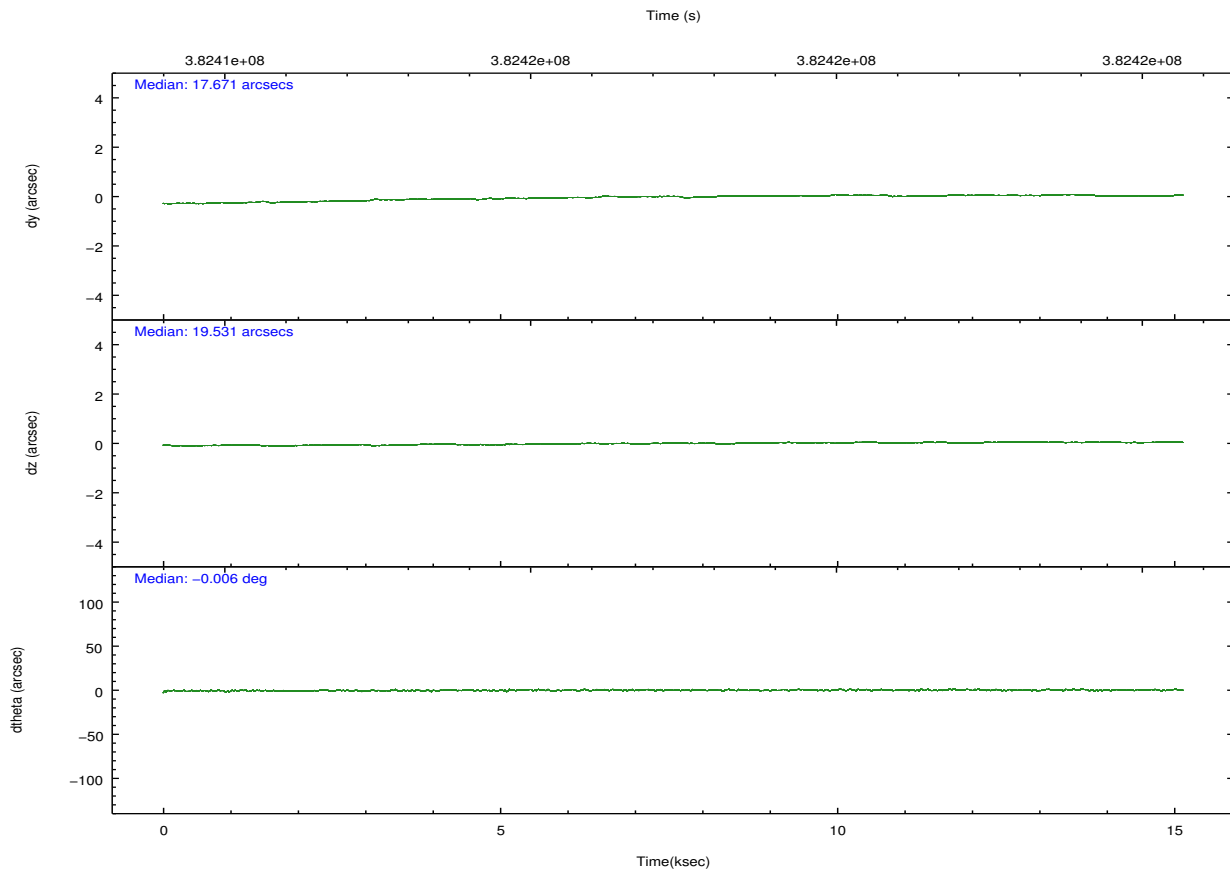
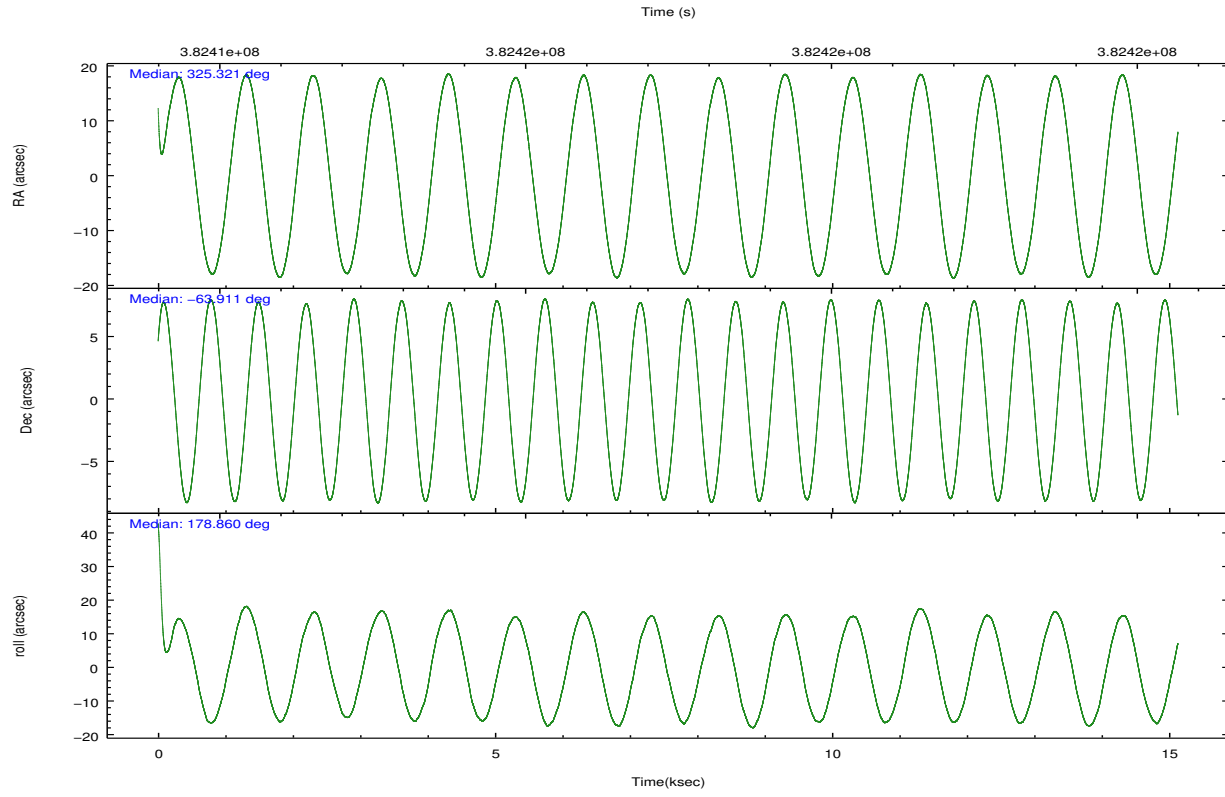
	ccd 2	ccd 3	ccd 5	ccd 6	ccd 7	ccd 8		ccd 2	ccd 3	ccd 5	ccd 6	ccd 7	ccd 8
level 1 events	134308	124659	194210	135586	156515	171200	grade 0 events	5046	4662	10945	5613	7093	13862
rejected events	121457	112852	103395	121766	89546	129114		3%	3%	5%	4%	4%	8%
rejected %	90%	90%	53%	89%	57%	75%	grade 1 events	83	83	476	70	217	169
								0%	0%	0%	0%	0%	0%
							grade 2 events	3383	2774	30157	3268	15155	10385
								2%	2%	15%	2%	9%	6%
							grade 3 events	1421	1429	3909	1569	6394	4708
								1%	1%	2%	1%	4%	2%
							grade 4 events	1471	1426	3705	1476	6383	4505
								1%	1%	1%	1%	4%	2%
							grade 5 events	4760	5535	14814	5708	16062	8041
								3%	4%	7%	4%	10%	4%
							grade 6 events	2626	2546	49857	3106	37641	12388
								1%	2%	25%	2%	24%	7%
							grade 7 events	115518	106204	80347	114776	67570	117142
								86%	85%	41%	84%	43%	68%

2.2 Compared Parameters

Parameter	Planned	Actual	Parameter	Planned	Actual
Instrument	ACIS	ACIS	Obspar format version number	7	7
Detector	ACIS-235678	ACIS-235678	Obspar file type	PREDICTED	ACTUAL
Grating	NONE	NONE	Obspar update status	NONE	UPDATED
Data mode	FAINT	FAINT	CCD I0 on	N	N
Observation mode	POINTING	POINTING	CCD I1 on	N	N
[deg] Pointing RA	325.374846	325.3208542636207	CCD I2 on	O1	Y
[deg] Pointing Dec	-63.897625	-63.91113168065843	CCD I3 on	O2	Y
[deg] Pointing Roll	178.756690	178.8648593764667	CCD S0 on	N	N
[mm] SIM focus pos	-0.684267	-0.6828225247311905	CCD S1 on	Y	Y
[mm] SIM defocus	0	0.001444936568705701	CCD S2 on	Y	Y
[mm] SIM translation stage pos	-190.132523	-190.1425803651734	CCD S3 on	Y	Y
[mm] SIM translation stage offset	0	0.01005778216563158	CCD S4 on	Y	Y
[s] Observation start time (MET)	382409881.184000	382408202.49986	CCD S5 on	N	N
Observation start date	2010-02-13T00:56:55	2010-02-13T00:30:02	Number of optional ACIS chips dropped	0	0
[s] Observation end time (MET)	382424881.184000	382425903.73826	On-chip summing requested	N	N
Observation end date	2010-02-13T05:06:55	2010-02-13T05:25:03	Subarray requested	NONE	NONE
Read mode	TIMED	TIMED	Alternating exposures requested	N	N
			[s] Primary exposure time	0.000000	3.2

2.3 Aspect



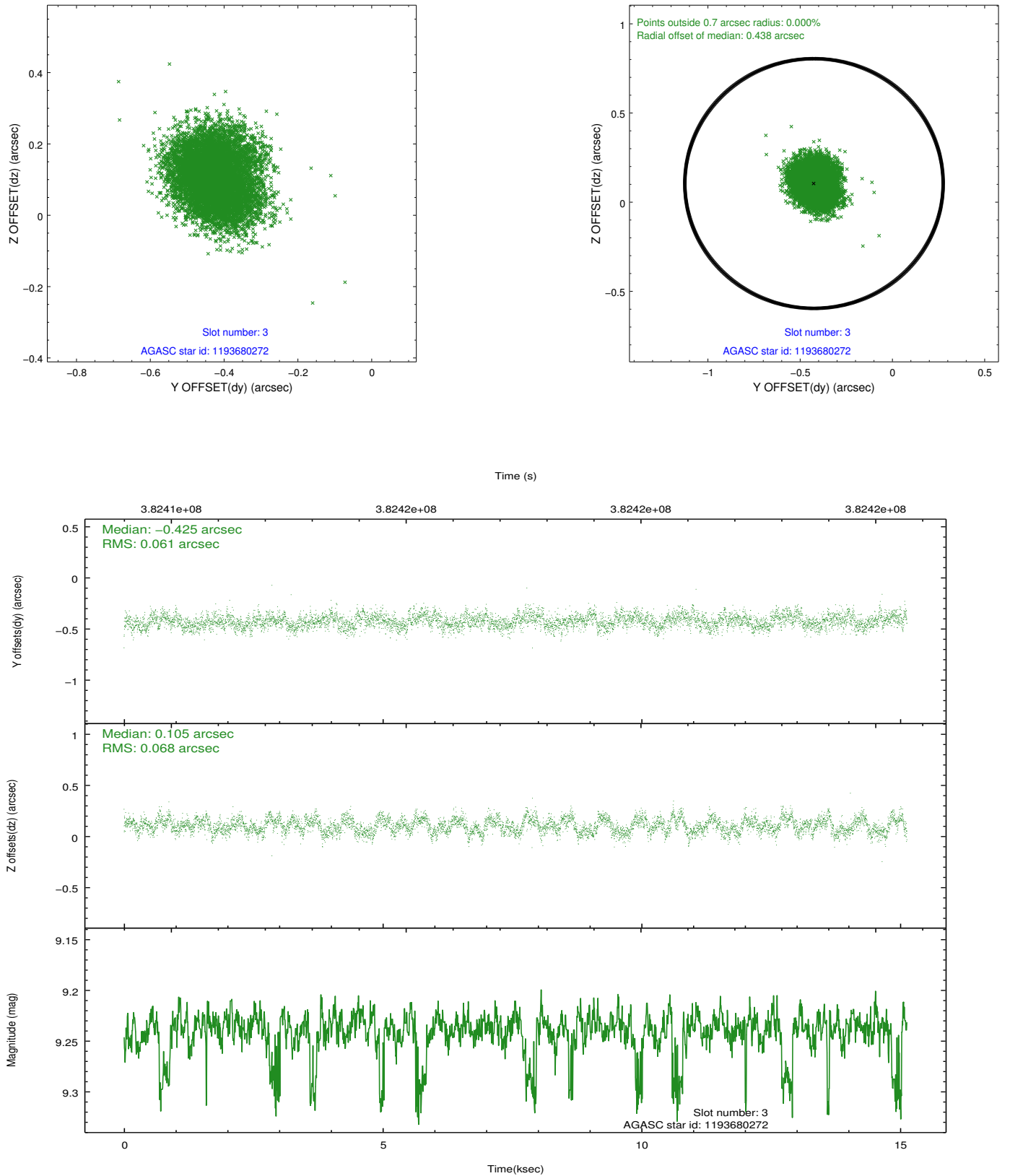


Slot Statistics

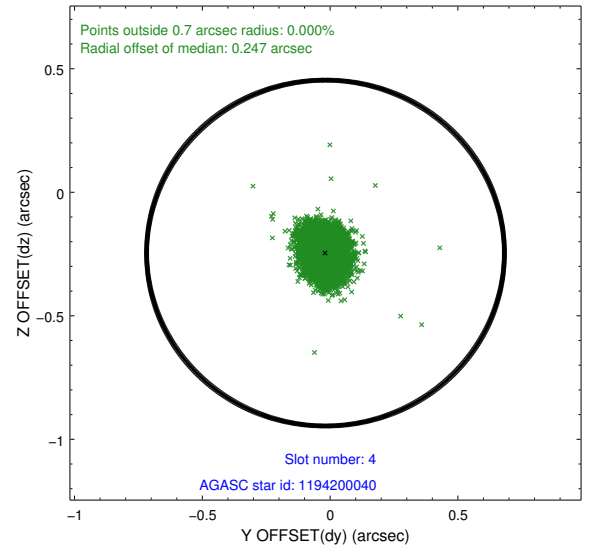
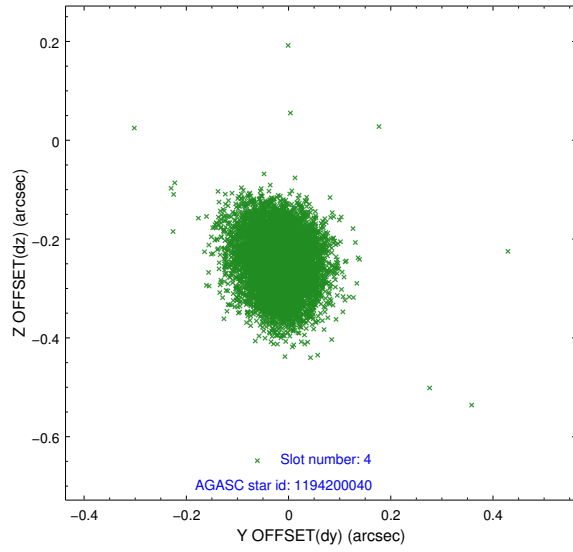
slot	status	id	mag	n_pts	med_dy	med_dz	dr1	dr2	ra	dec	mean_y	mean_z
0	FID	ACIS-S-1	6.96	3690	-0.008	0.005	0.008	0.014	0.000000	0.000000	925.38	-1736.58
1	FID	ACIS-S-4	6.97	3690	0.071	-0.022	0.007	0.011	0.000000	0.000000	2143.00	167.26
2	FID	ACIS-S-6	7.10	3690	-0.087	0.028	0.007	0.012	0.000000	0.000000	391.59	804.98
3	GUIDE	1193680272	9.24	7359	-0.425	0.105	0.098	0.154	324.334509	-63.532966	1697.36	-1261.98
4	GUIDE	1194200040	8.59	7376	-0.018	-0.246	0.075	0.120	325.419421	-64.143833	-88.35	884.66
5	GUIDE	1195256872	8.54	7378	0.373	0.097	0.087	0.138	325.966906	-63.408630	-914.51	-1775.70
6	GUIDE	1194198384	8.71	7374	-0.143	-0.136	0.071	0.113	324.919894	-64.159057	693.81	959.19
7	GUIDE	1195255128	9.98	7364	0.215	0.184	0.147	0.239	326.850850	-63.744834	-2340.33	-572.45

2.4 Star Slots

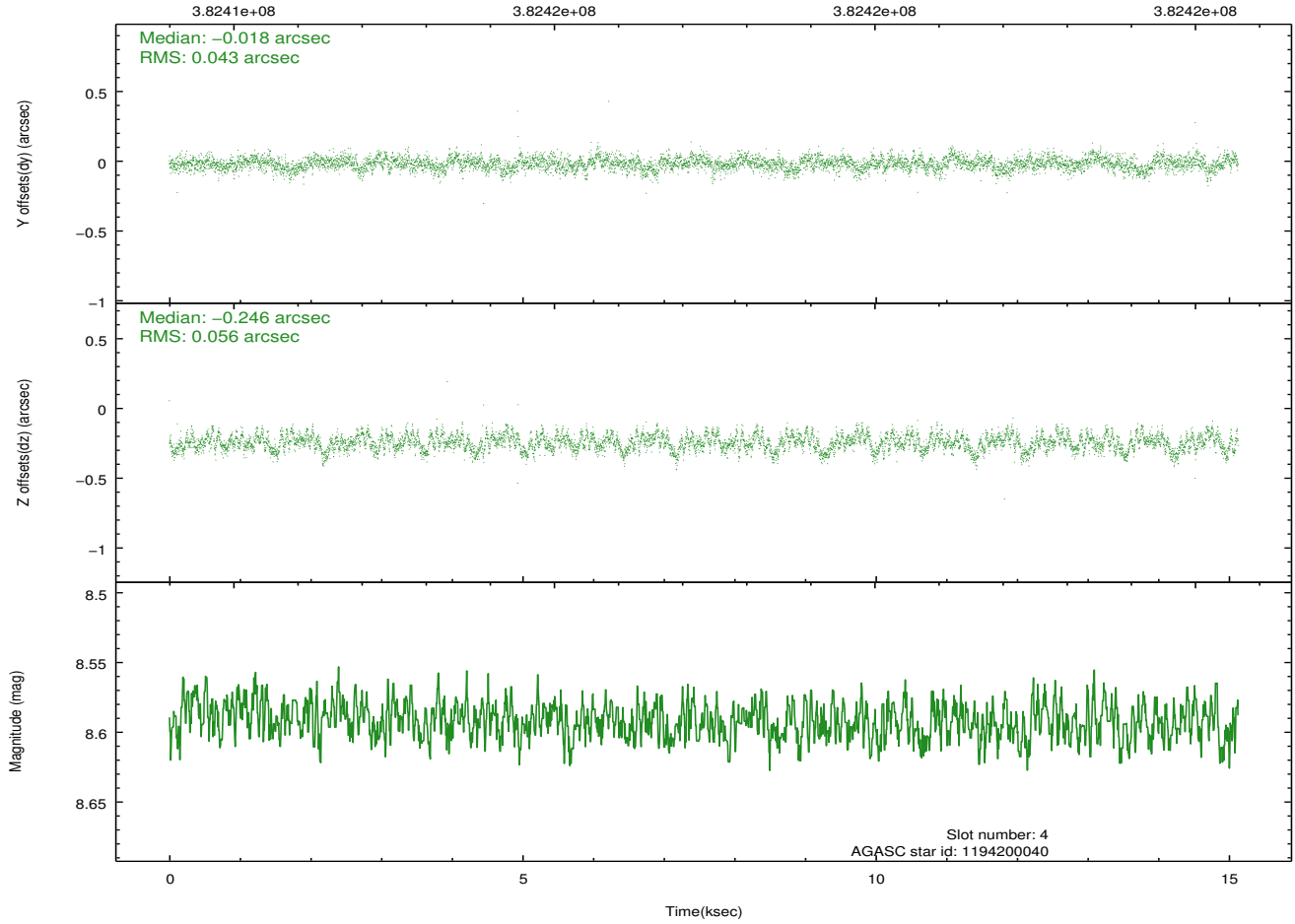
2.4.1 Slot 3



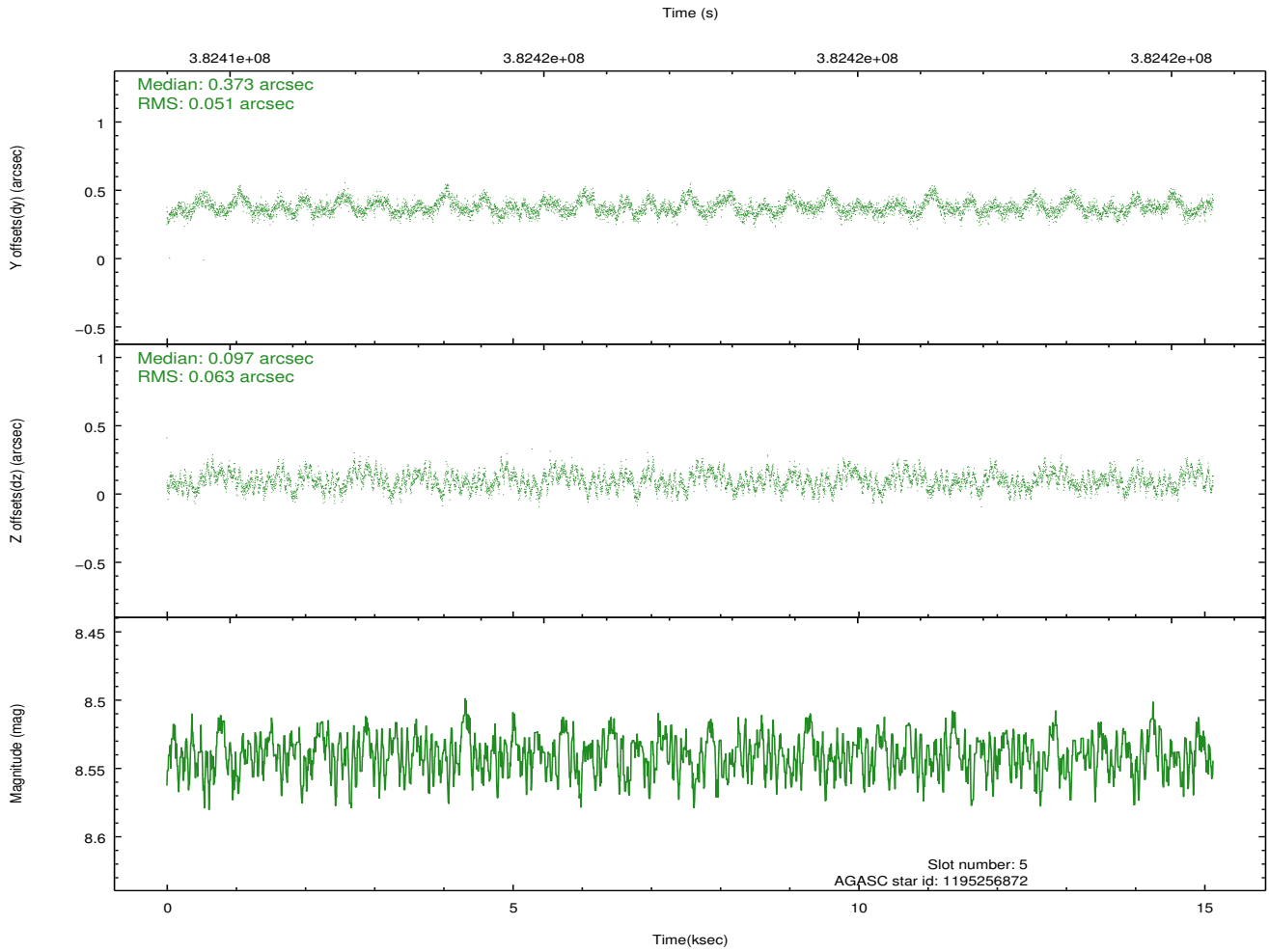
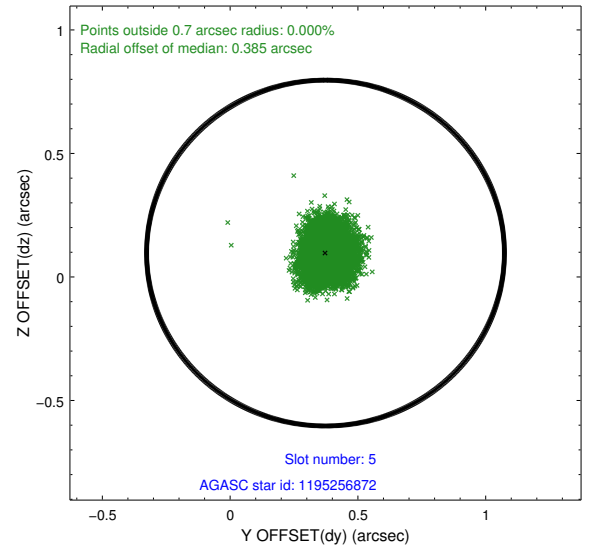
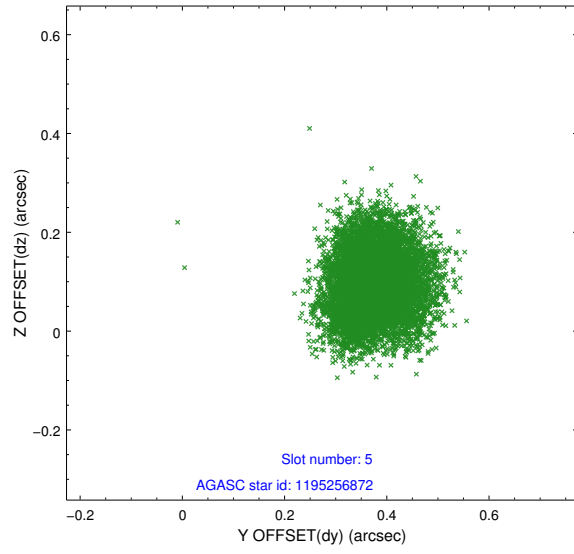
2.4.2 Slot 4



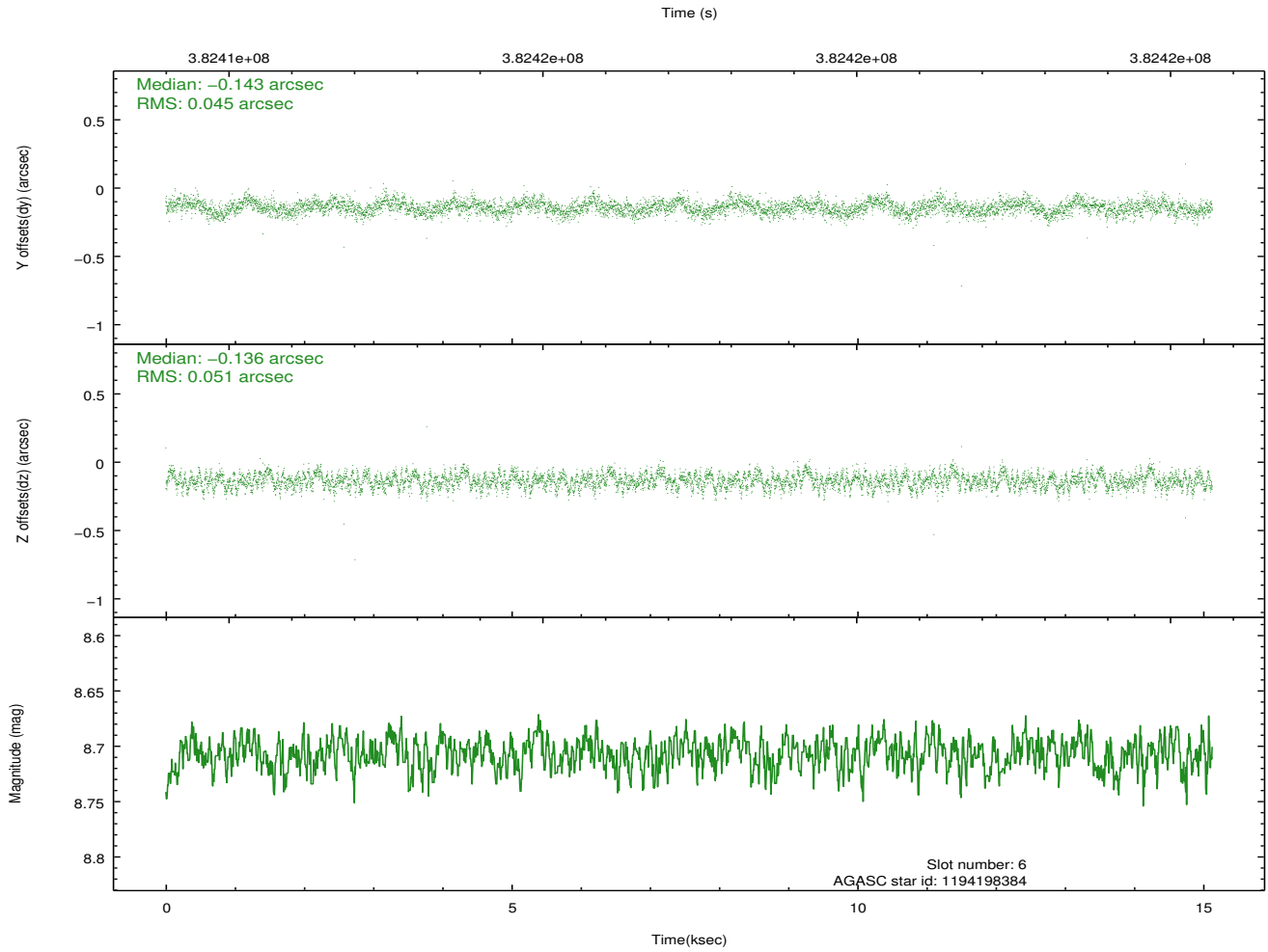
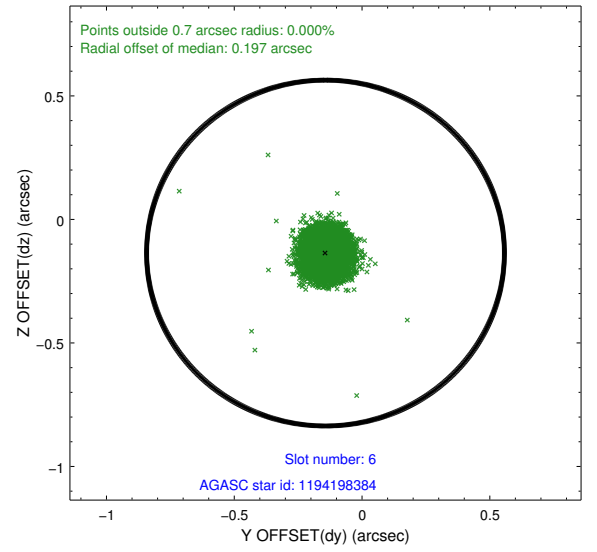
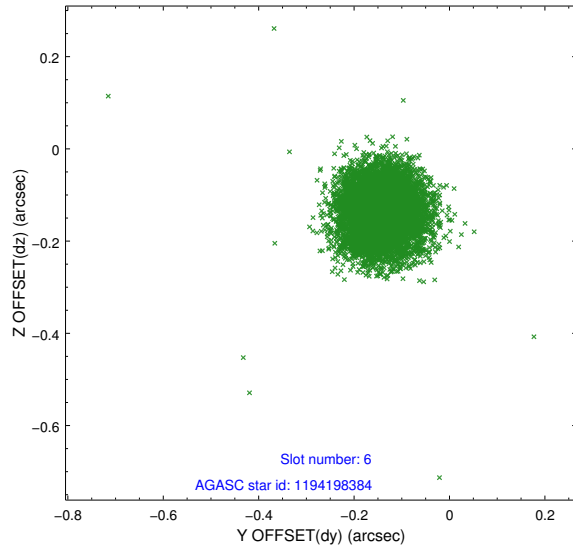
Time (s)



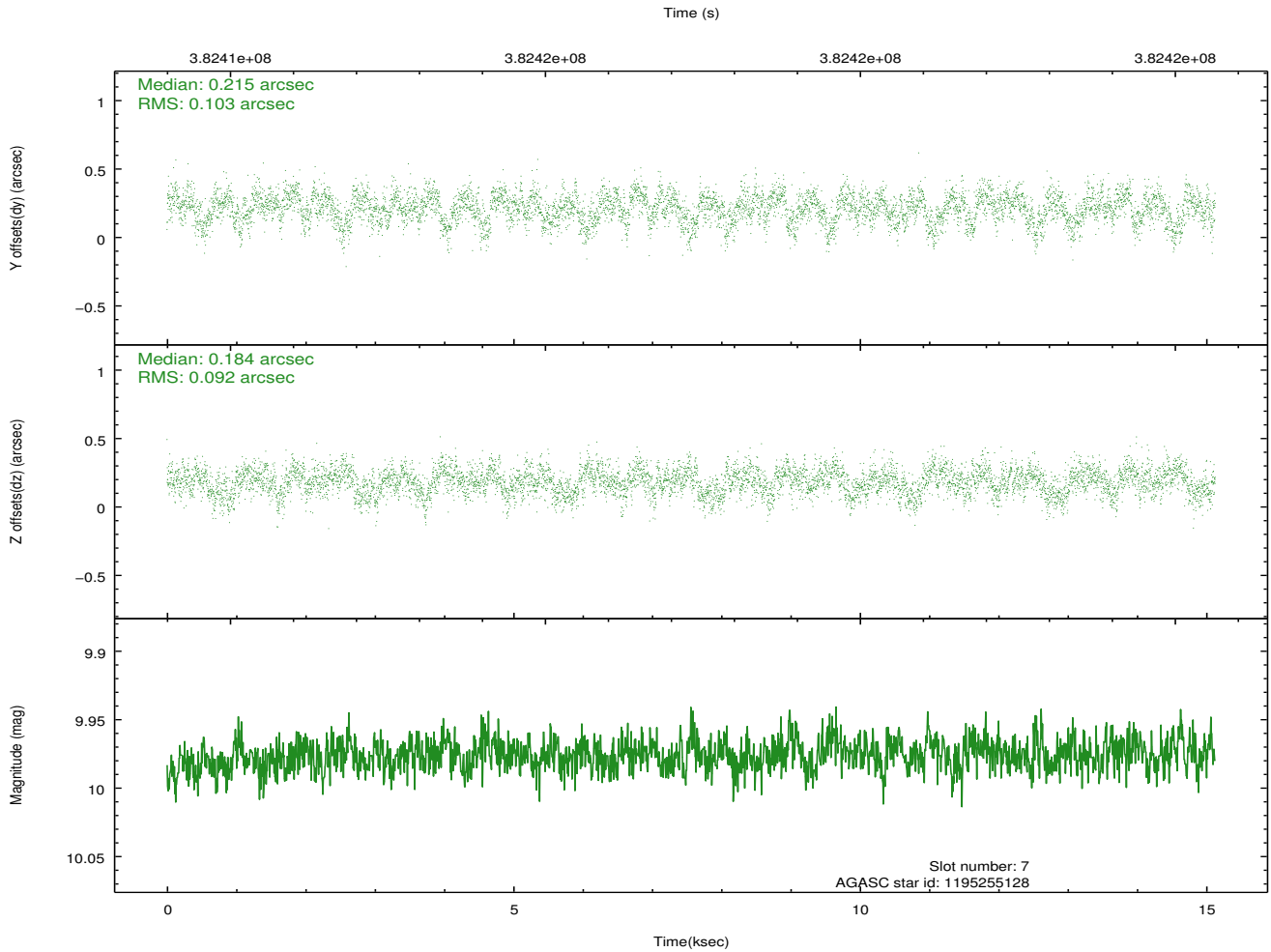
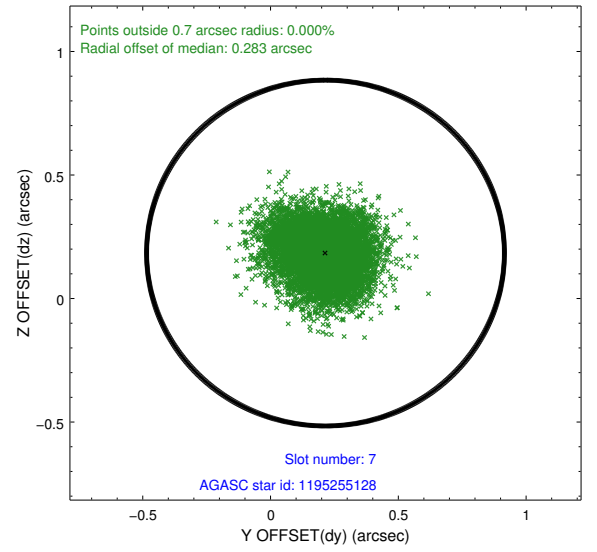
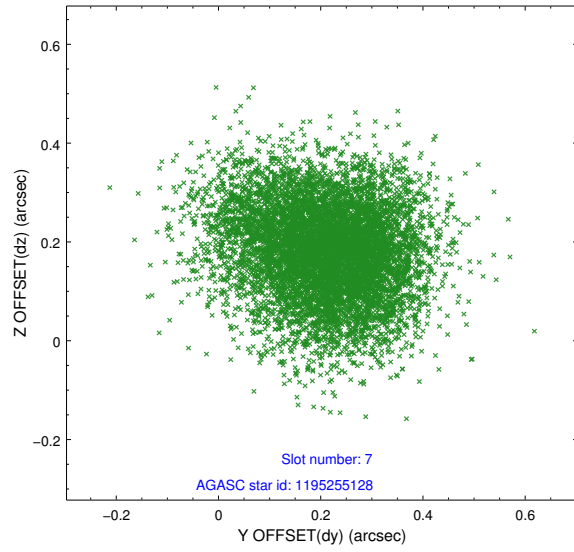
2.4.3 Slot 5



2.4.4 Slot 6

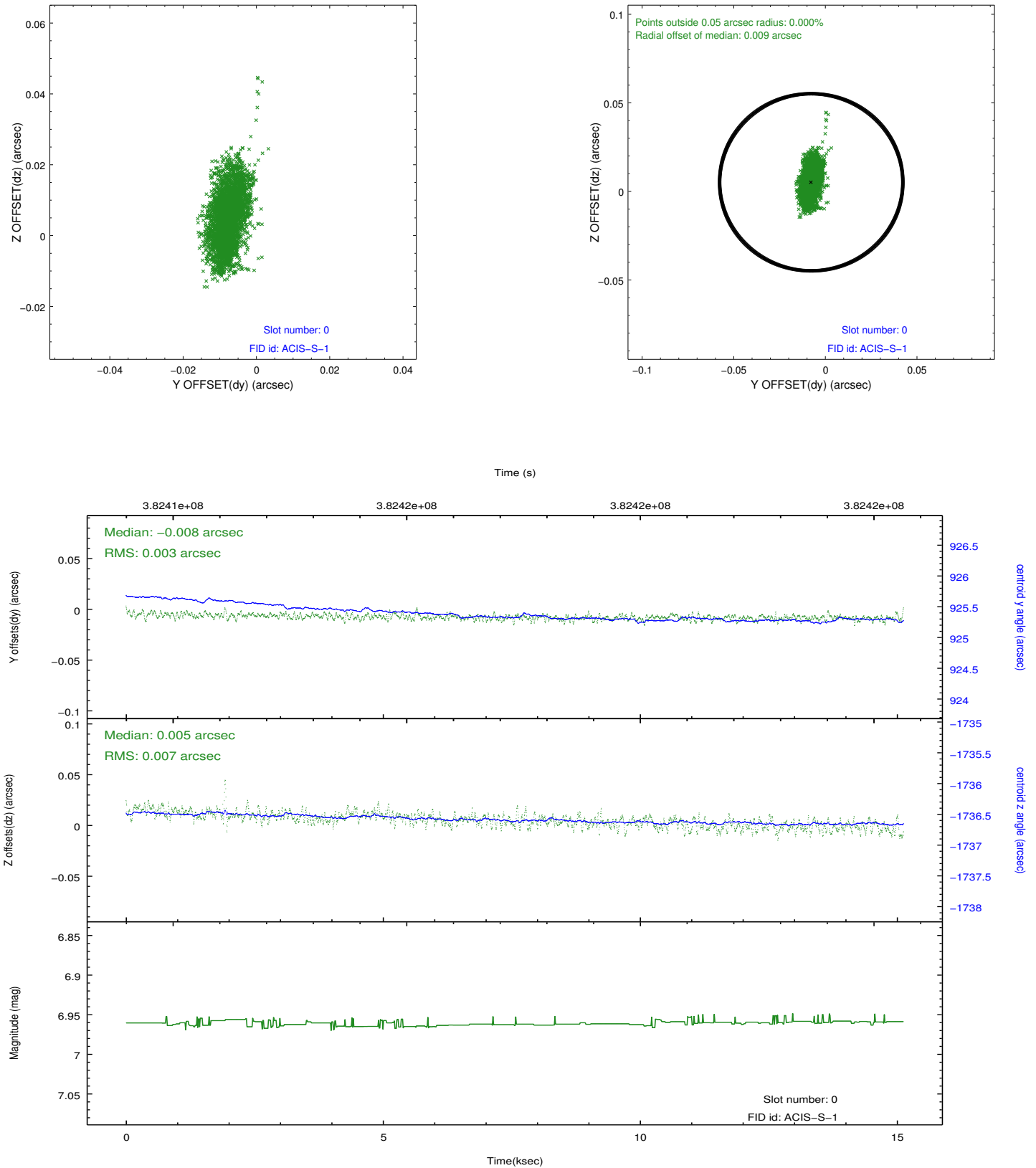


2.4.5 Slot 7

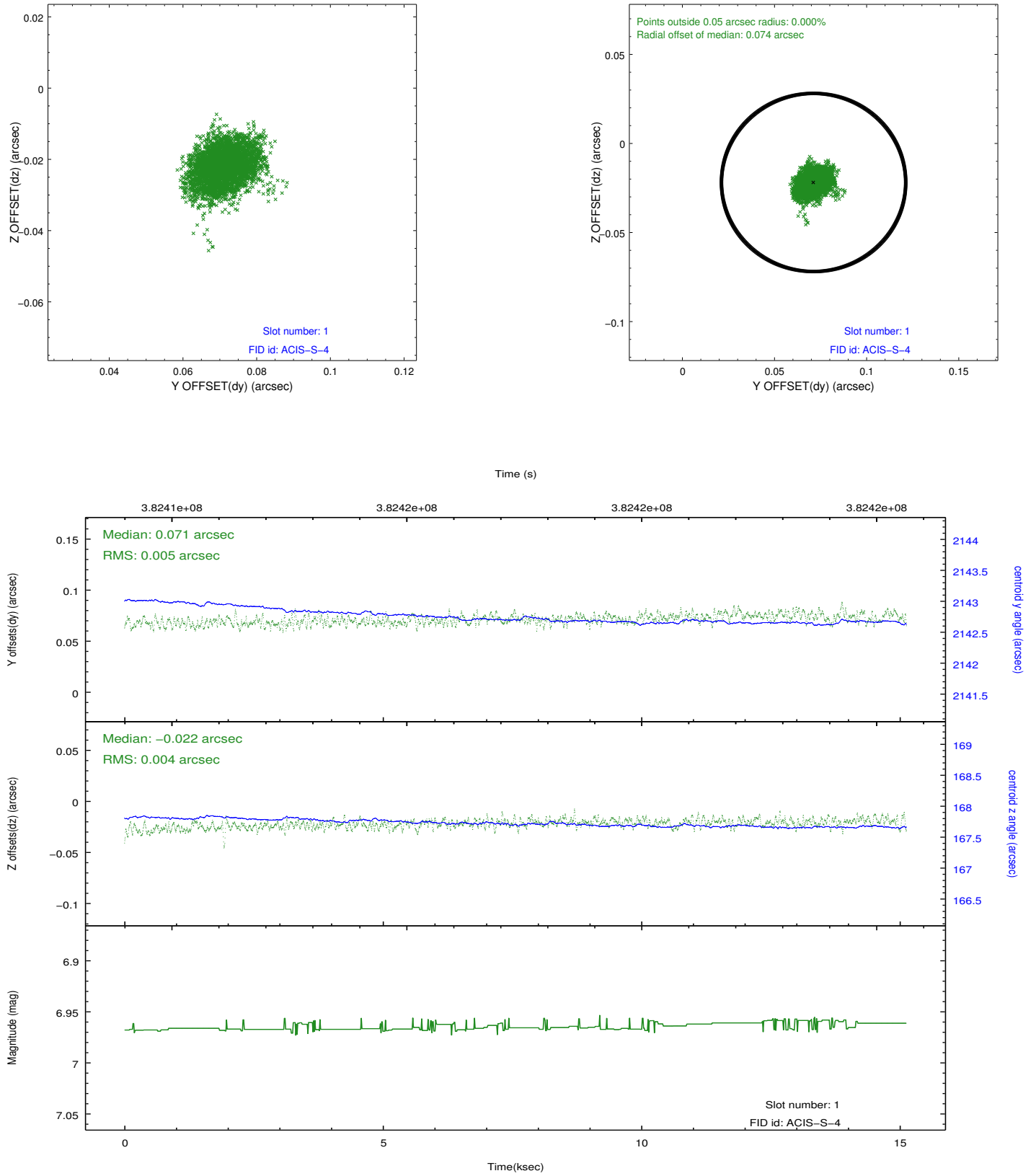


2.5 FID Slots

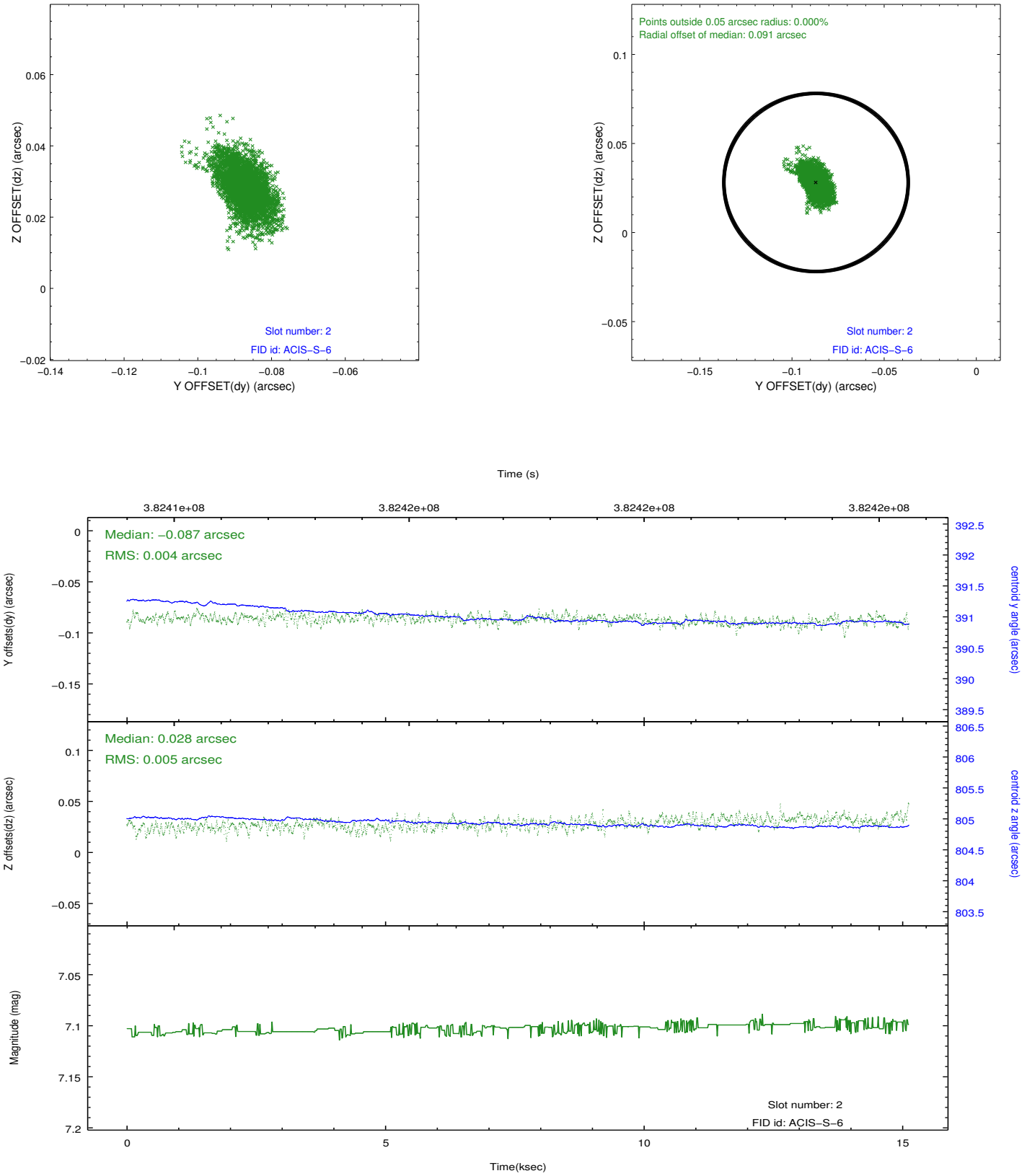
2.5.1 Slot 0



2.5.2 Slot 1



2.5.3 Slot 2



A Summary

A.1 Status

V&V Scientist	Jen Lauer
V&V Date (YYYY-MM-DD)	2012.06.27
V&V Edition	1
V&V Disposition and Status	OK
V&V Charge Time	15.1231999

A.2 Comments