

V&V Reference Report

L2 ASCDS Version : 8.4.5

Observation 11375 - L2 Version 2
Chandra X-Ray Center

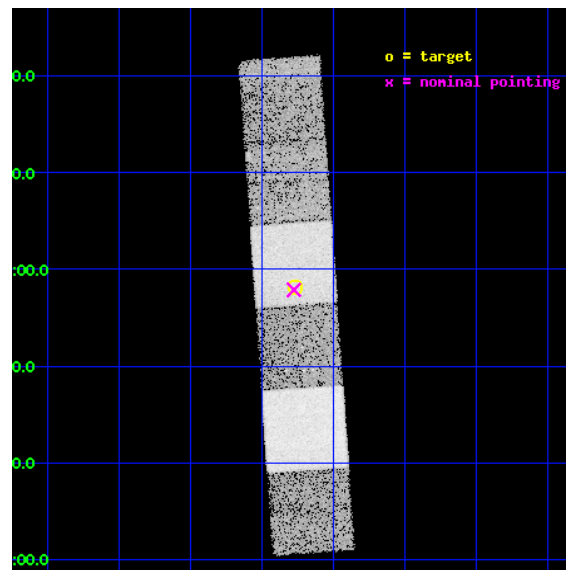
L2 Processing Date : Jul 2 2012

Contents

1	Front	2
2	OBI	3
2.1	OBI	3
2.1.1	Images	3
2.1.2	Bias	3
2.1.3	Parameters	4
2.1.4	Events	4
2.2	Compared Parameters	5
2.3	Aspect	6
2.4	Star Slots	9
2.4.1	Slot 3	9
2.4.2	Slot 4	10
2.4.3	Slot 5	11
2.4.4	Slot 6	12
2.4.5	Slot 7	13
2.5	FID Slots	14
2.5.1	Slot 0	14
2.5.2	Slot 1	15
2.5.3	Slot 2	16
A	Summary	17
A.1	Status	17
A.2	Comments	17

1 Front

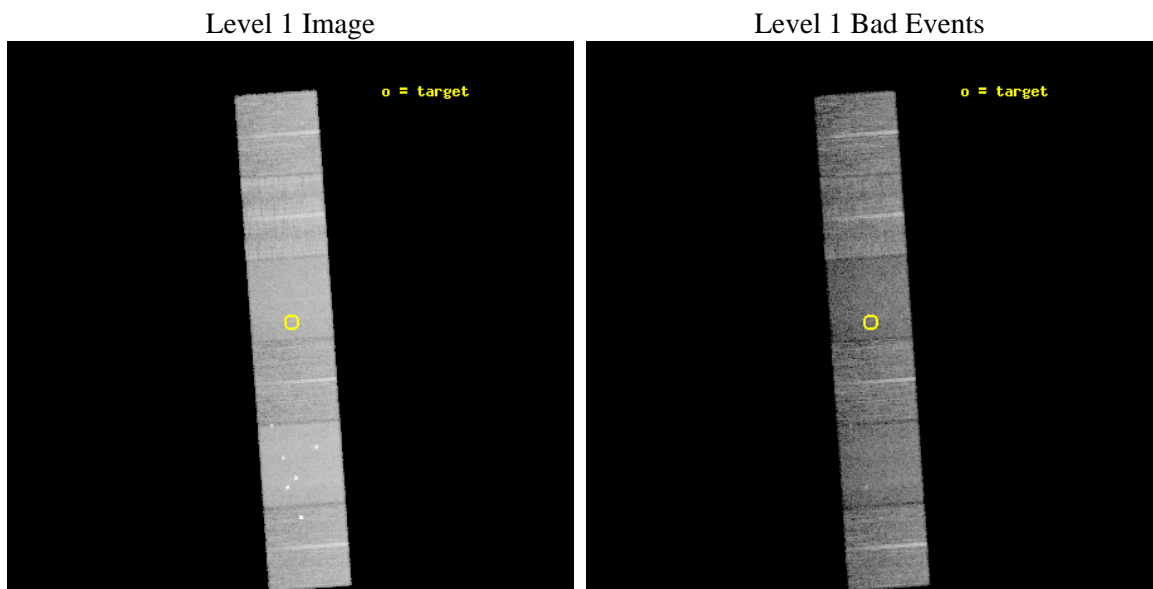
seq_num	600894	Sequence number
obs_id	11375	Observation id
title	Accretion onto nuclear black holes in early type galaxies: comparing field vs. clusters	Proposal title
observer	Elena Gallo	Principal investigator
object	PGC1242097	Source name
dtcycle	0	
cycle	P	events from which exps? Prim/Second/Both
ra_targ	224.692	Observer's specified target RA [deg]
dec_targ	2.96899	Observer's specified target Dec [deg]
ra_nom	224.6942365085	Nominal RA [deg]
dec_nom	2.9646803656783	Nominal Dec [deg]
roll_nom	265.92099528116	Nominal Roll [deg]
revision	2	Processing version of data
ontime	11653.114080667	Sum of GTIs [s]
liveltime	11505.555333515	Livetime [s]
ontime4	11653.155120671	Sum of GTIs [s]
ontime5	11653.073040664	Sum of GTIs [s]
ontime6	11653.032000661	Sum of GTIs [s]
ontime7	11653.114080667	Sum of GTIs [s]
ontime8	11649.749990344	Sum of GTIs [s]
ontime9	11652.949920654	Sum of GTIs [s]
l2events	143005	Number of level 2 events



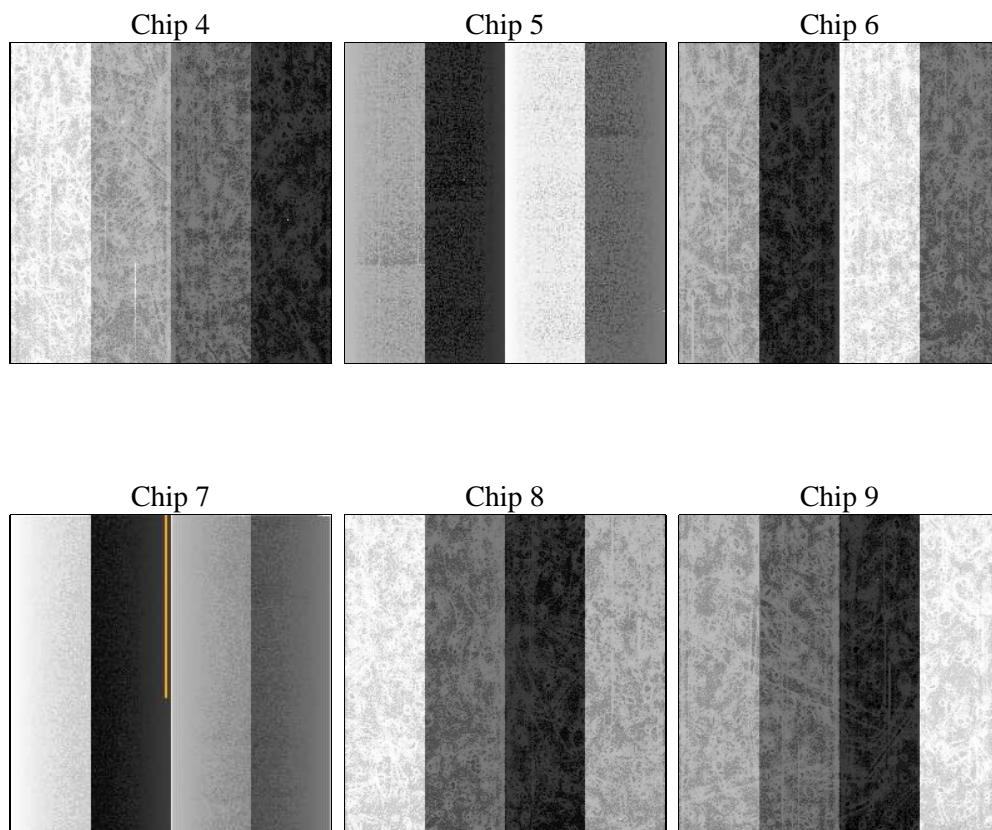
2 OBI

2.1 OBI

2.1.1 Images



2.1.2 Bias



2.1.3 Parameters

obi_num	0	Obi number	sched_exp_time	11900.000000	[s] Scheduled observation exposure time
ascdsver	8.4.5	Processing system revision	ontime	11653.114080667	Sum of GTIs [s]
caldsver	4.5.0	 	ontime4	11653.155120671	Sum of GTIs [s]
date	2012-07-02T19:34:49	Date and time of file creation	ontime5	11653.073040664	Sum of GTIs [s]
revision	2	Processing version of data	ontime6	11653.032000661	Sum of GTIs [s]
			ontime7	11653.114080667	Sum of GTIs [s]
			ontime8	11649.749990344	Sum of GTIs [s]
			ontime9	11652.949920654	Sum of GTIs [s]
			l1events	623132	Number of level 1 events

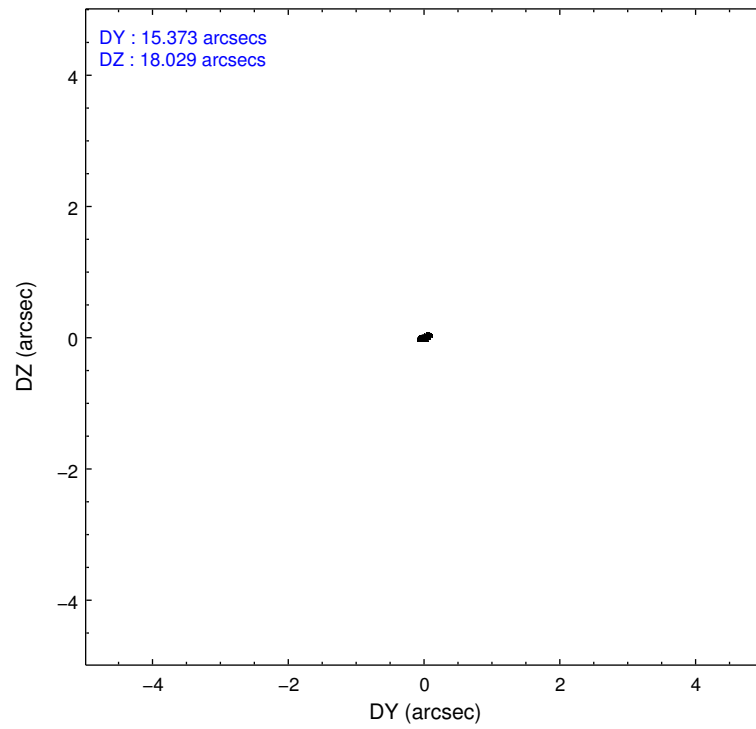
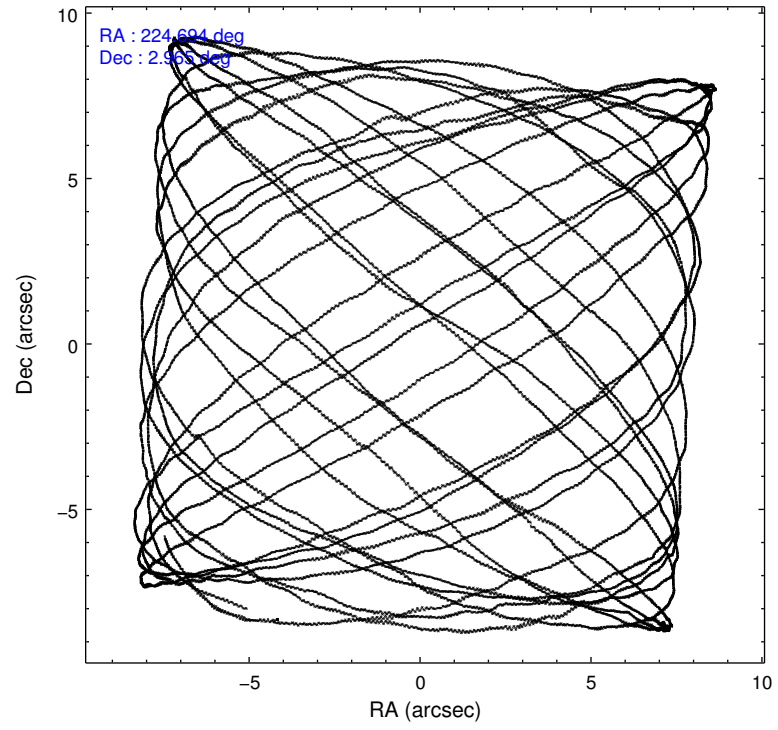
2.1.4 Events

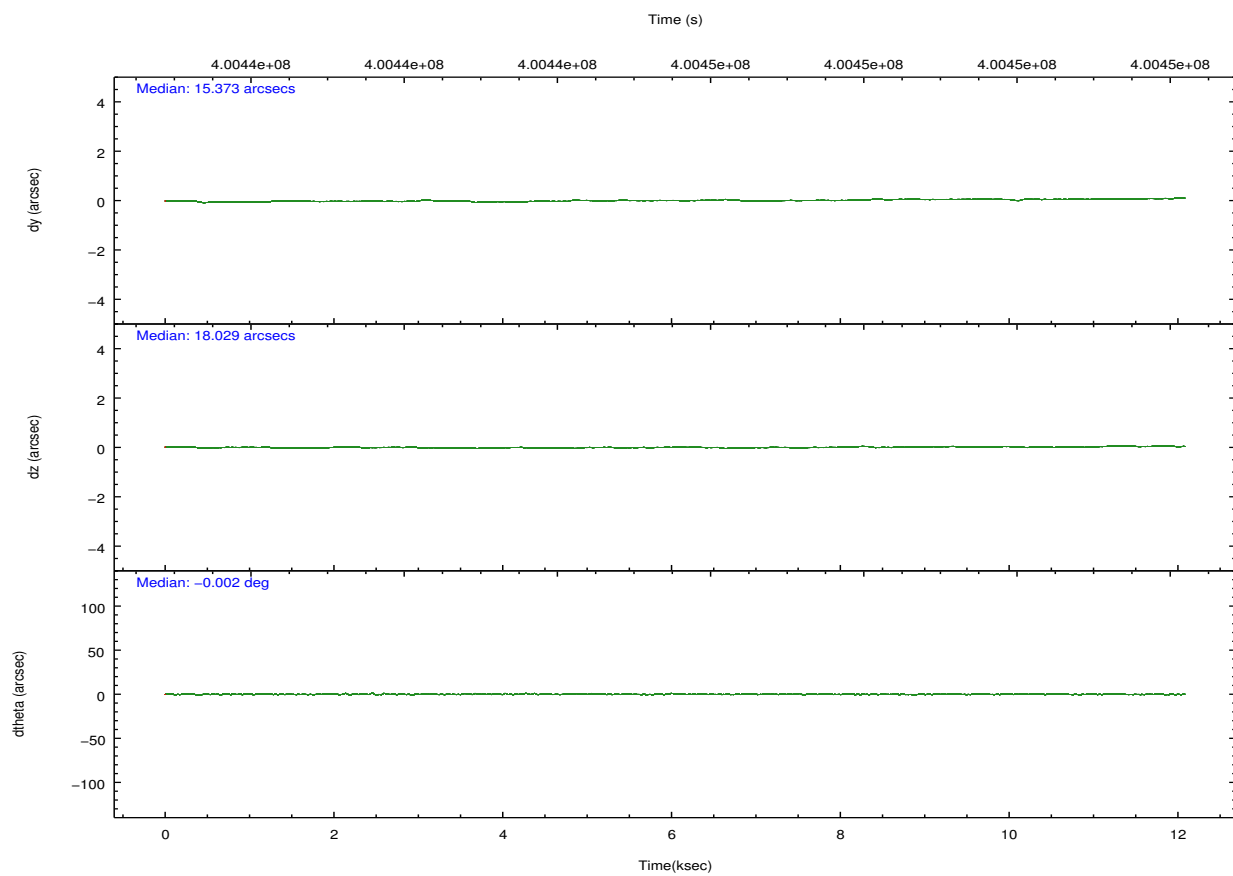
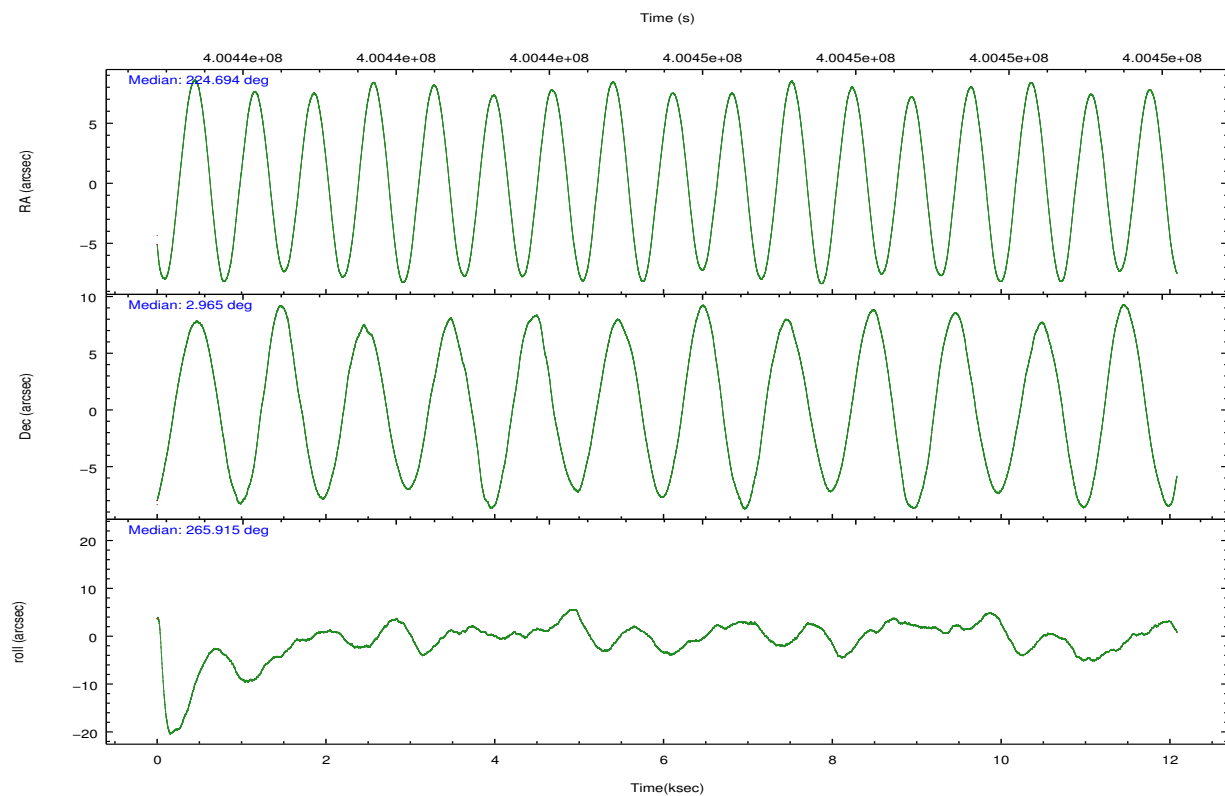
	ccd 4	ccd 5	ccd 6	ccd 7	ccd 8	ccd 9		ccd 4	ccd 5	ccd 6	ccd 7	ccd 8	ccd 9
level 1 events	97111	132447	84219	105119	117742	86494	grade 0 events	6425	8638	3544	4545	9480	3855
rejected events	84624	65258	74427	57677	86435	76215		6%	6%	4%	4%	8%	4%
rejected %	87%	49%	88%	54%	73%	88%	grade 1 events	108	424	48	134	116	59
								0%	0%	0%	0%	0%	0%
							grade 2 events	2357	19550	2176	9723	7212	2197
								2%	14%	2%	9%	6%	2%
							grade 3 events	1049	2669	1017	4220	3293	1079
								1%	2%	1%	4%	2%	1%
							grade 4 events	1038	2575	955	4197	3125	1020
								1%	1%	1%	3%	2%	1%
							grade 5 events	3786	10042	3855	11225	5633	4235
								3%	7%	4%	10%	4%	4%
							grade 6 events	1622	33778	2103	24771	8209	2137
								1%	25%	2%	23%	6%	2%
							grade 7 events	80726	54771	70521	46304	80674	71912
								83%	41%	83%	44%	68%	83%

2.2 Compared Parameters

Parameter	Planned	Actual	Parameter	Planned	Actual
Instrument	ACIS	ACIS	Obspar format version number	7	7
Detector	ACIS-456789	ACIS-456789	Obspar file type	PREDICTED	ACTUAL
Grating	NONE	NONE	Obspar update status	NONE	UPDATED
Data mode	VFAINT	VFAINT	CCD I0 on	N	N
Observation mode	POINTING	POINTING	CCD I1 on	N	N
[deg] Pointing RA	224.681939	224.6942365085031	CCD I2 on	N	N
[deg] Pointing Dec	2.989118	2.964680365678264	CCD I3 on	N	N
[deg] Pointing Roll	265.765010	265.9209952811563	CCD S0 on	O1	Y
[mm] SIM focus pos	-0.684267	-0.6828225247311905	CCD S1 on	Y	Y
[mm] SIM defocus	0	0.001444936568705701	CCD S2 on	Y	Y
[mm] SIM translation stage pos	-190.132523	-190.1425803651734	CCD S3 on	Y	Y
[mm] SIM translation stage offset	0	0.01005778216563158	CCD S4 on	Y	Y
[s] Observation start time (MET)	400439672.184000	400439195.71873	CCD S5 on	O2	Y
Observation start date	2010-09-09T17:13:26	2010-09-09T17:06:35	Number of optional ACIS chips dropped	0	0
[s] Observation end time (MET)	400451572.184000	400451767.34437	On-chip summing requested	N	N
Observation end date	2010-09-09T20:31:46	2010-09-09T20:36:07	Subarray requested	NONE	NONE
Read mode	TIMED	TIMED	Alternating exposures requested	N	N
			[s] Primary exposure time	0.000000	3.2

2.3 Aspect



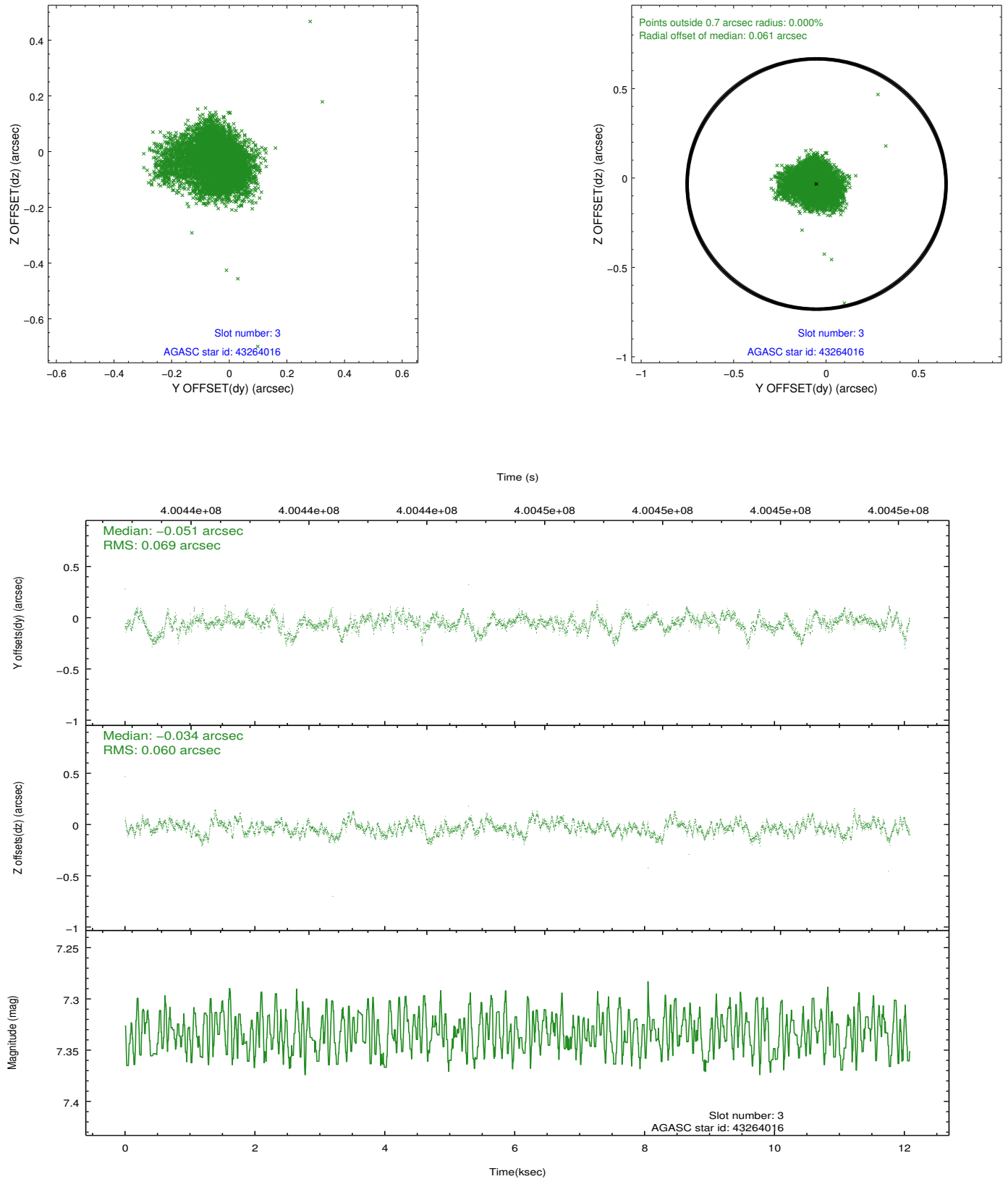


Slot Statistics

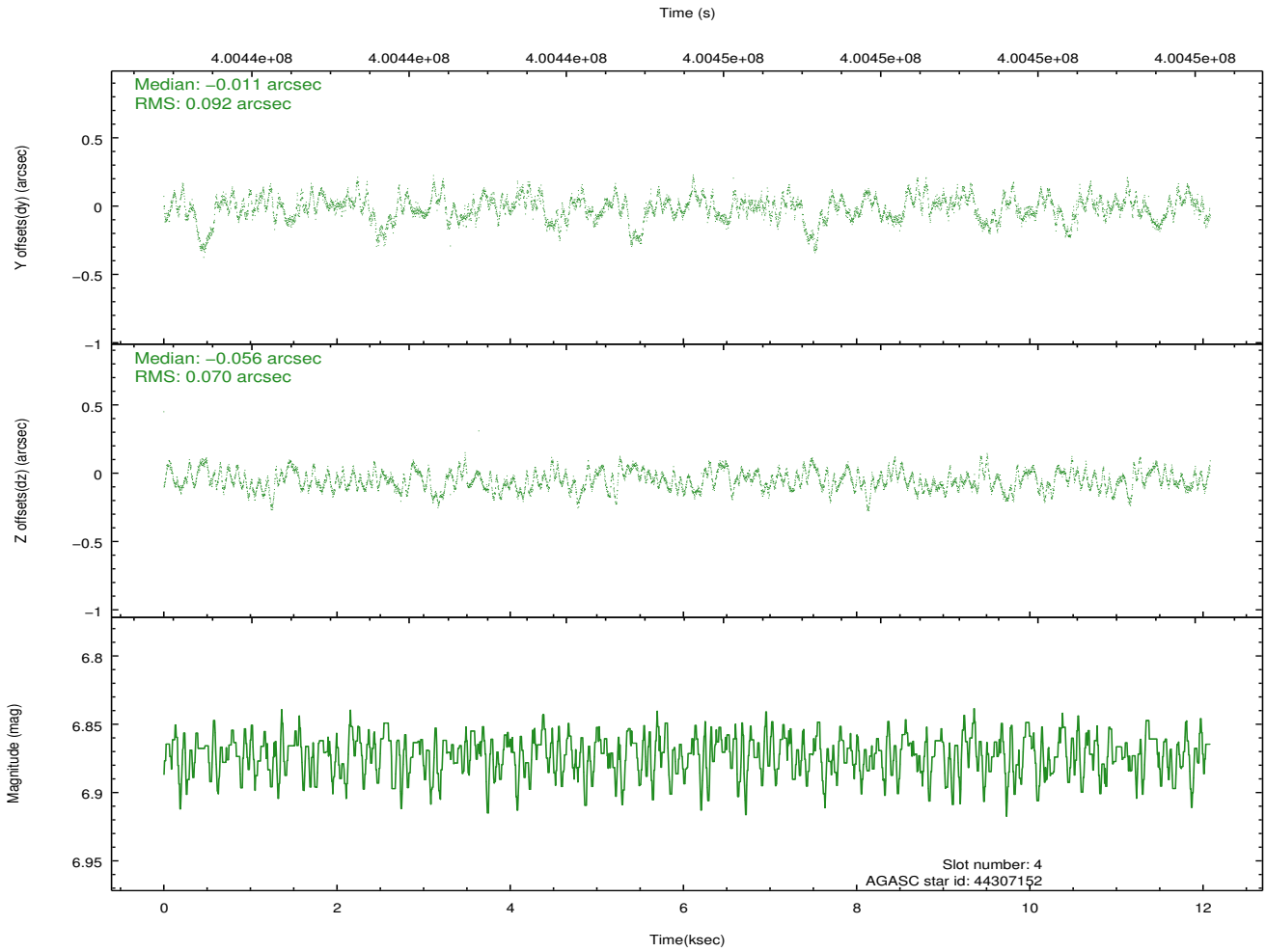
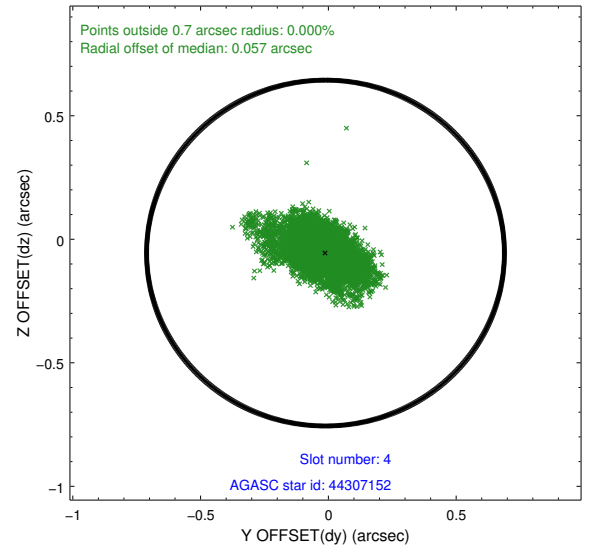
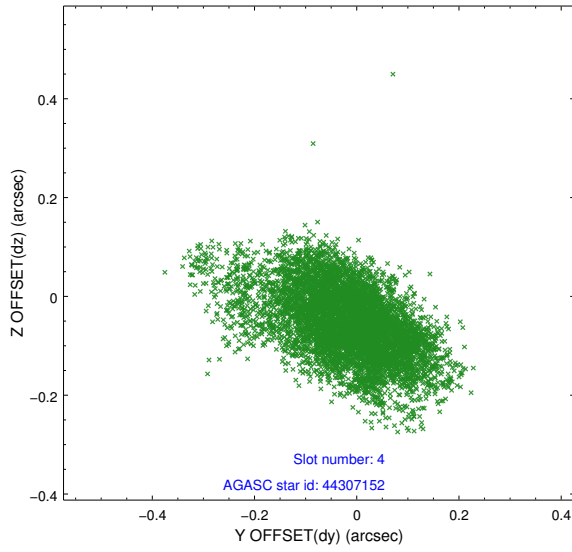
slot	status	id	mag	n_pts	med_dy	med_dz	dr1	dr2	ra	dec	mean_y	mean_z
0	FID	ACIS-S-2	6.87	2948	-0.066	-0.036	0.007	0.011	0.000000	0.000000	-768.47	-1739.45
1	FID	ACIS-S-4	6.96	2948	0.154	0.041	0.006	0.010	0.000000	0.000000	2144.89	168.59
2	FID	ACIS-S-5	6.98	2948	-0.120	0.004	0.006	0.010	0.000000	0.000000	-1820.79	162.81
3	GUIDE	43264016	7.33	5895	-0.051	-0.034	0.096	0.160	224.070131	3.416127	-1370.54	-2306.71
4	GUIDE	44307152	6.87	5895	-0.011	-0.056	0.118	0.214	225.255792	2.897456	176.79	2080.78
5	GUIDE	44311304	7.72	5892	-0.014	-0.156	0.127	0.184	225.054088	3.261517	-1076.94	1261.67
6	BAD	43257832	11.01	4986	-0.060	0.309	0.380	0.630	224.877016	3.189976	-773.14	646.21
7	GUIDE	43254760	10.31	5808	0.120	-0.001	0.189	0.313	224.526252	2.554479	1601.73	-443.28

2.4 Star Slots

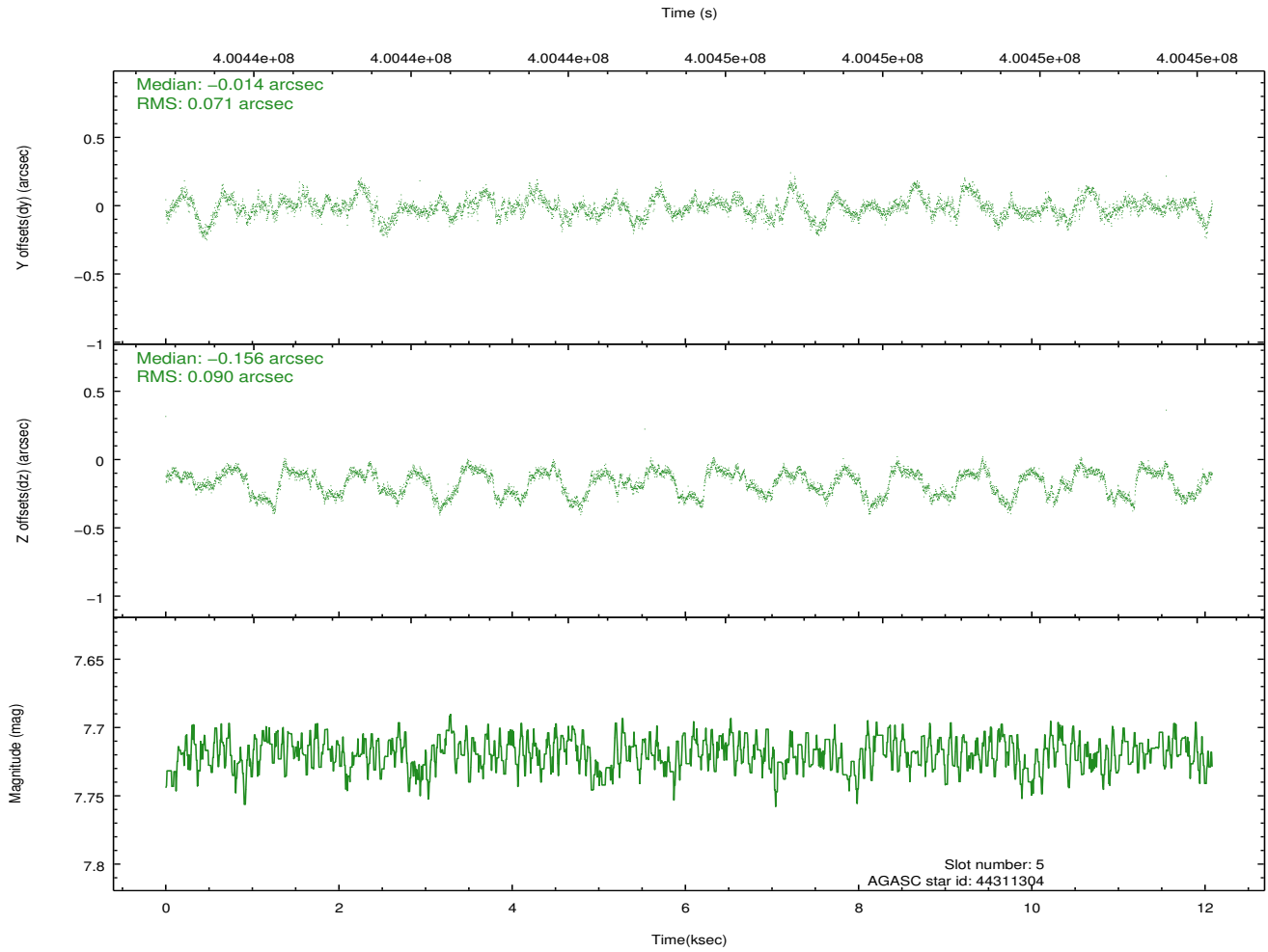
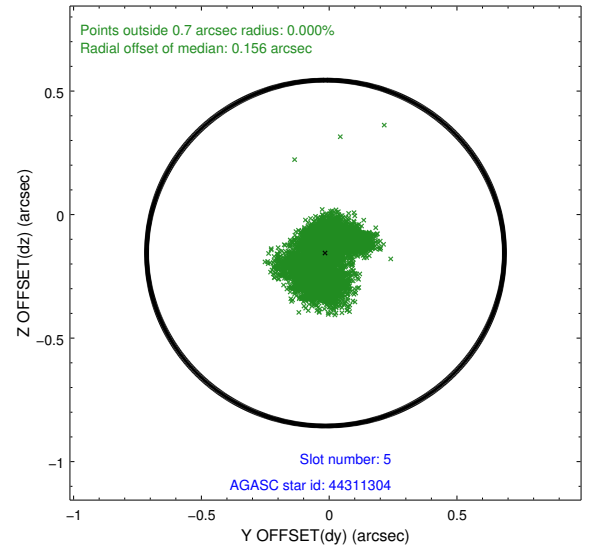
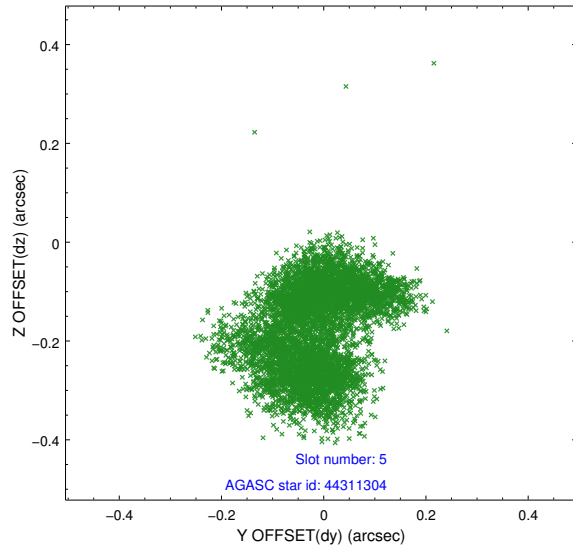
2.4.1 Slot 3



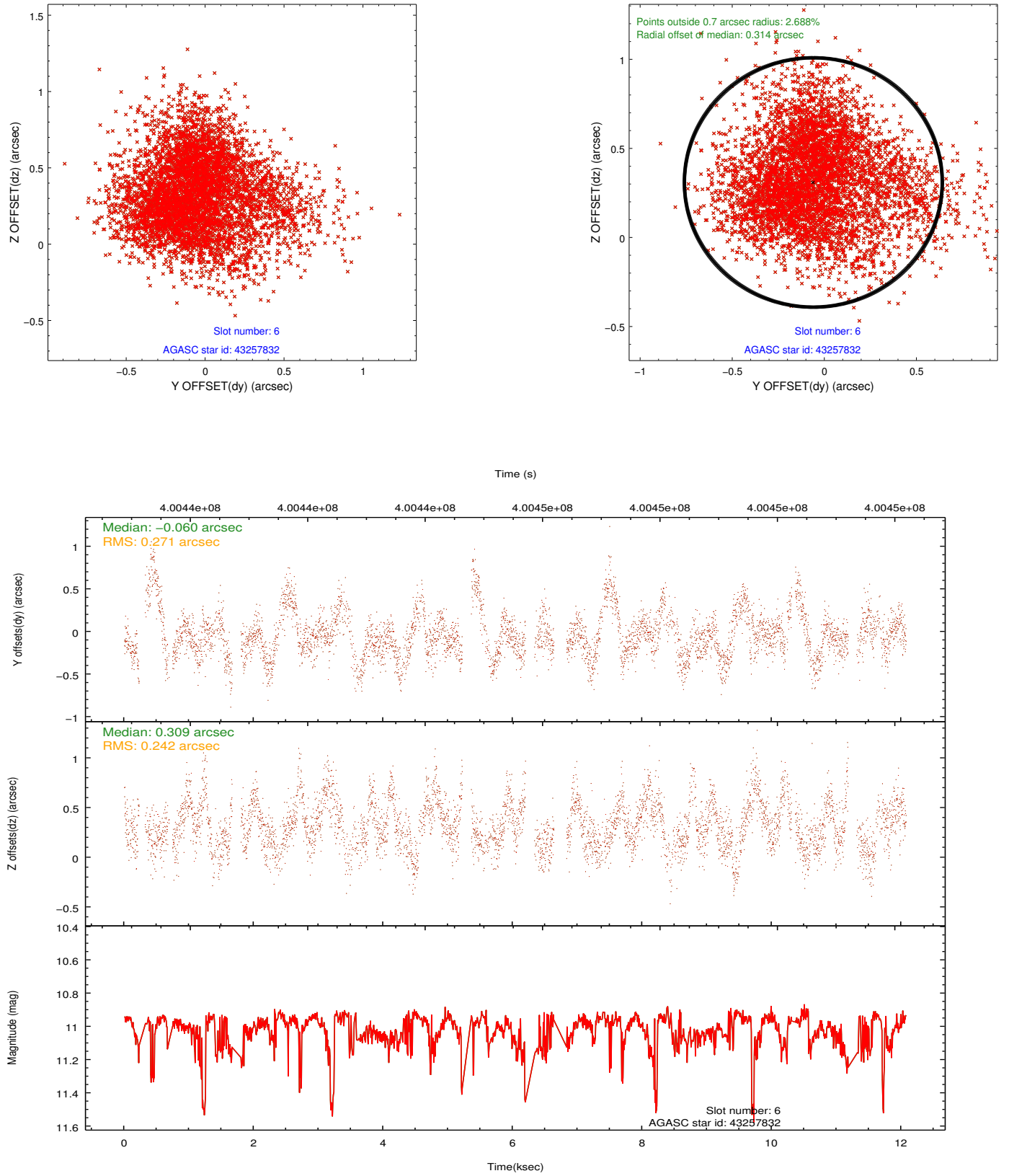
2.4.2 Slot 4



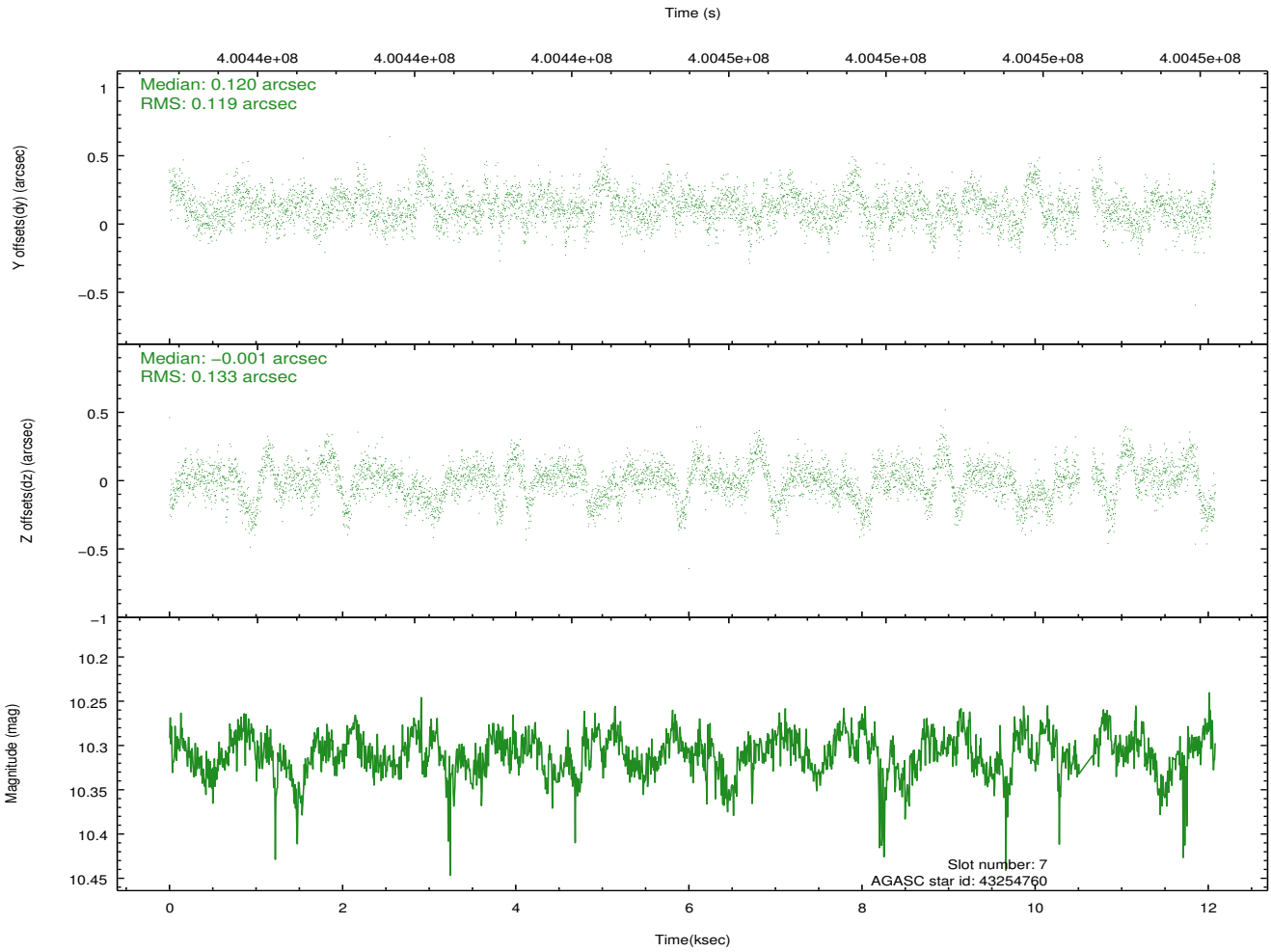
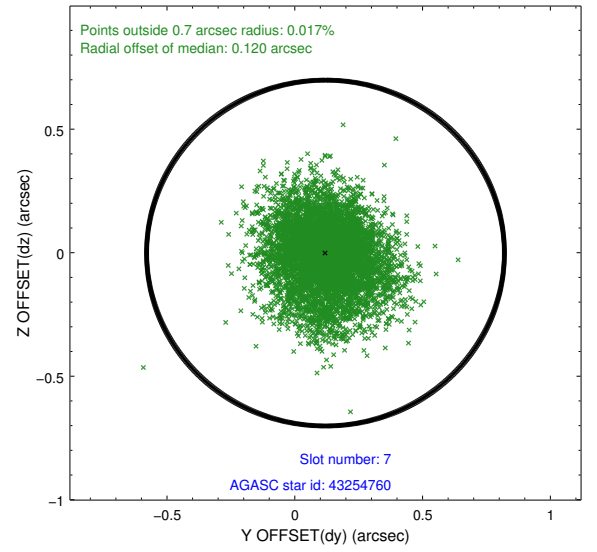
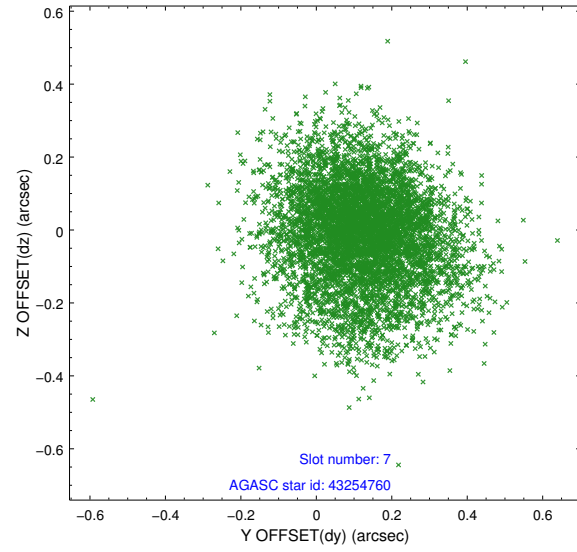
2.4.3 Slot 5



2.4.4 Slot 6

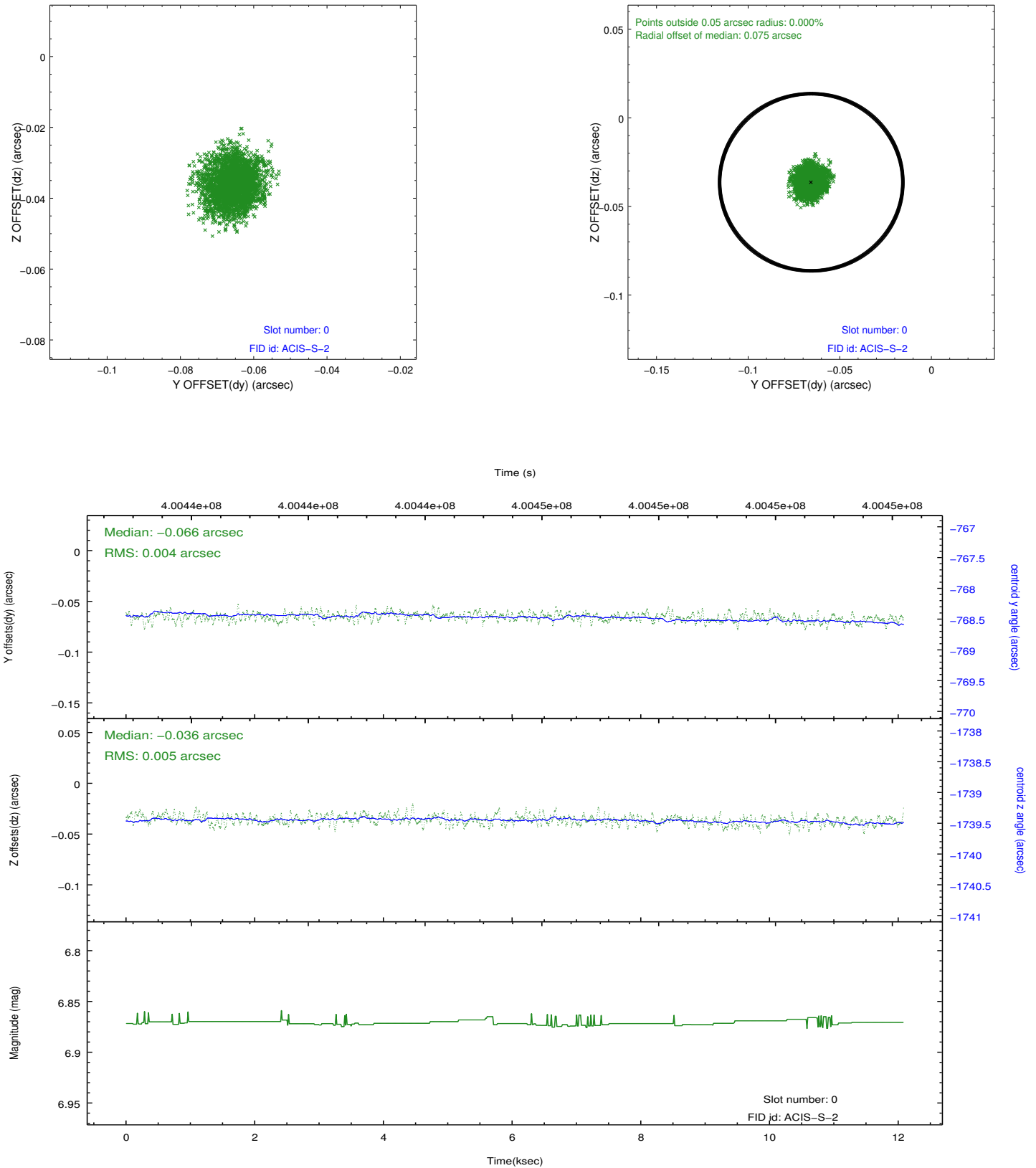


2.4.5 Slot 7

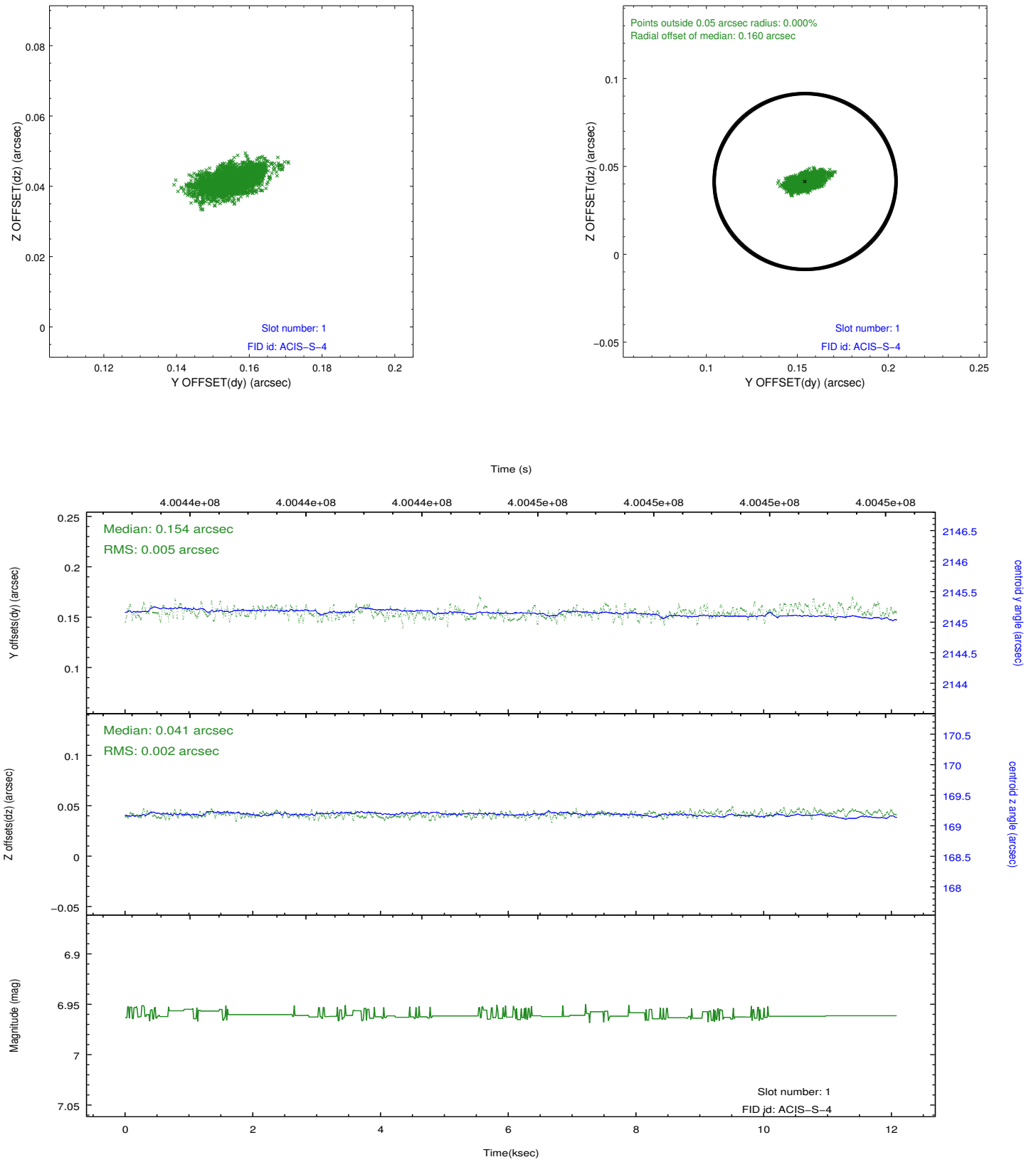


2.5 FID Slots

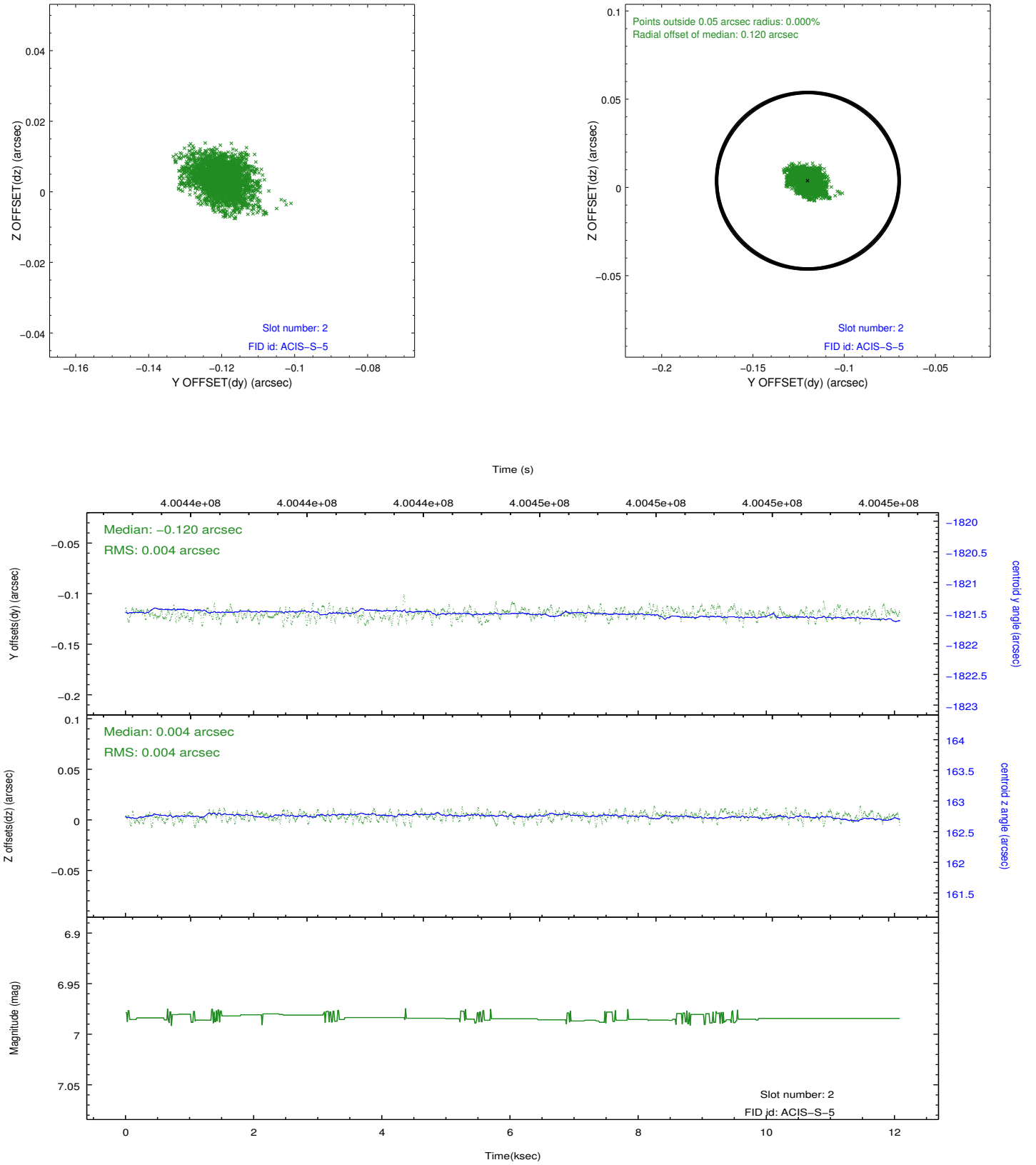
2.5.1 Slot 0



2.5.2 Slot 1



2.5.3 Slot 2



A Summary

A.1 Status

V&V Scientist	Jen Lauer
V&V Date (YYYY-MM-DD)	2012.07.11
V&V Edition	1
V&V Disposition and Status	OK
V&V Charge Time	11.653114079595

A.2 Comments