

V&V Reference Report

L2 ASCDS Version : 8.4.5

Observation 11125 - L2 Version 2
Chandra X-Ray Center

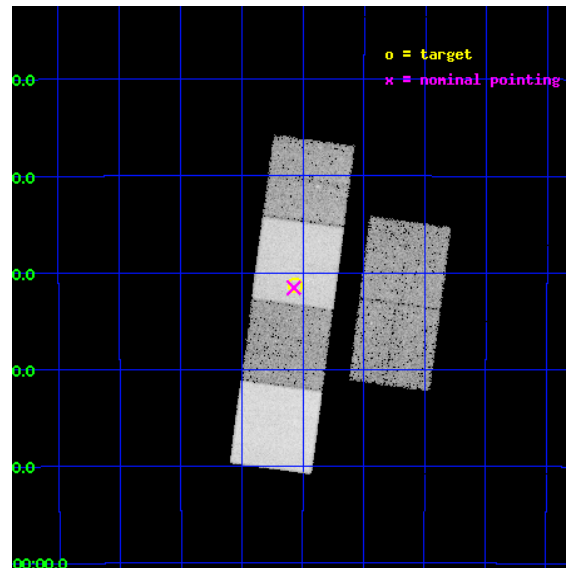
L2 Processing Date : Jun 30 2012

Contents

1	Front	2
2	OBI	3
2.1	OBI	3
2.1.1	Images	3
2.1.2	Bias	3
2.1.3	Parameters	4
2.1.4	Events	4
2.2	Compared Parameters	5
2.3	Aspect	6
2.4	Star Slots	9
2.4.1	Slot 3	9
2.4.2	Slot 4	10
2.4.3	Slot 5	11
2.4.4	Slot 6	12
2.4.5	Slot 7	13
2.5	FID Slots	14
2.5.1	Slot 0	14
2.5.2	Slot 1	15
2.5.3	Slot 2	16
A	Summary	17
A.1	Status	17
A.2	Comments	17

1 Front

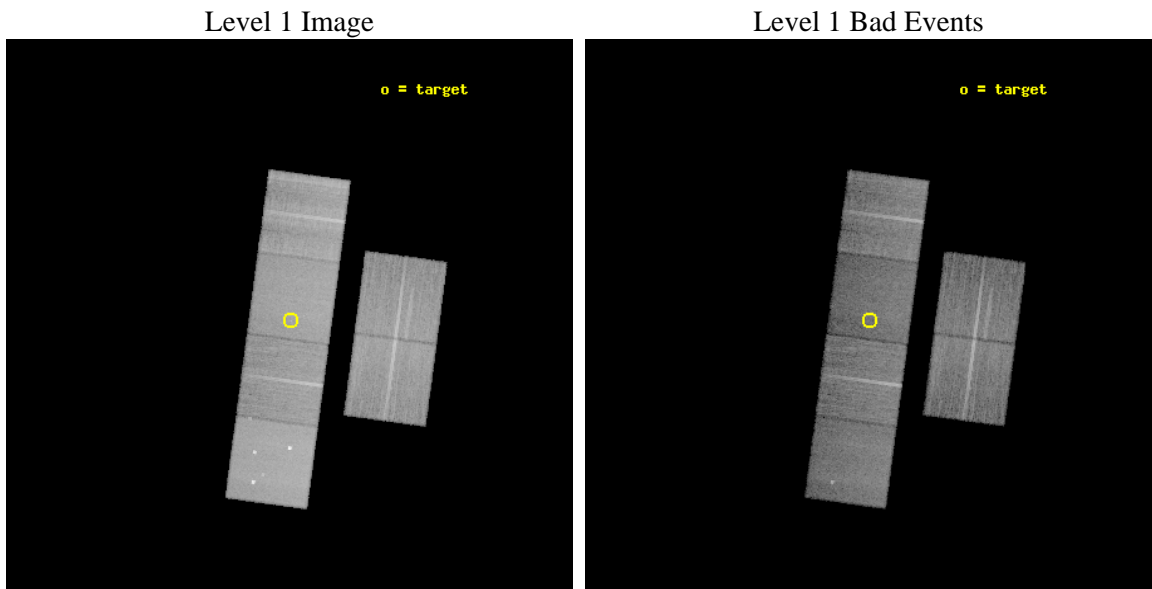
seq_num	501210	Sequence number
obs_id	11125	Observation id
title	A Search for X-Rays From Pulsars Discovered by Fermi	Proposal titl
observer	Dr. Mallory Roberts	Principal investigator
object	PSR J1732-31	Source name
dtcycle	0	
cycle	P	events from which exps? Prim/Second/Both
ra_targ	263.139542	Observer's specified target RA [deg]
dec_targ	-31.522528	Observer's specified target Dec [deg]
ra_nom	263.14311894967	Nominal RA [deg]
dec_nom	-31.526290466386	Nominal Dec [deg]
roll_nom	277.63585129379	Nominal Roll [deg]
revision	2	Processing version of data
ontime	20049.684613466	Sum of GTIs [s]
liveltime	19795.80343442	Livetime [s]
ontime2	20049.72565347	Sum of GTIs [s]
ontime3	20049.561493456	Sum of GTIs [s]
ontime5	20049.643573463	Sum of GTIs [s]
ontime6	20043.120562494	Sum of GTIs [s]
ontime7	20049.684613466	Sum of GTIs [s]
ontime8	20046.279503047	Sum of GTIs [s]
l2events	250846	Number of level 2 events



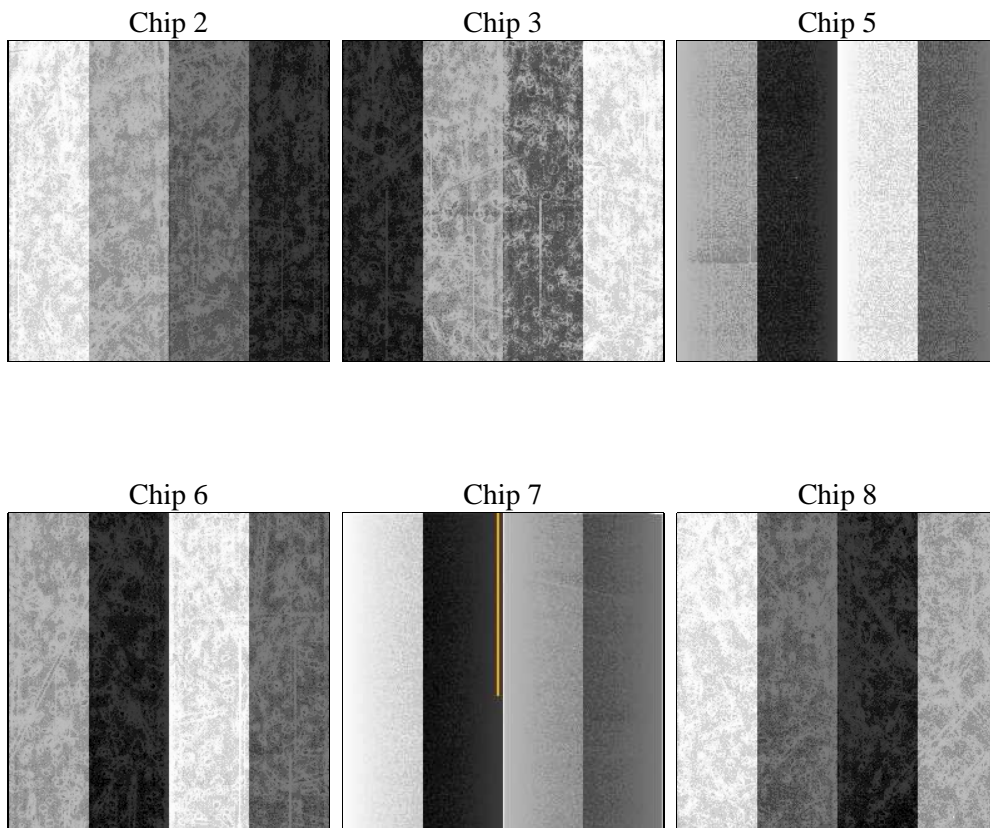
2 OBI

2.1 OBI

2.1.1 Images



2.1.2 Bias



2.1.3 Parameters

obi_num	0	Obi number	sched_exp_time	20000.000000	[s] Scheduled observation exposure time
ascdsver	8.4.5	Processing system revision	ontime	20049.684613466	Sum of GTIs [s]
caldsver	4.5.0	 	ontime2	20049.72565347	Sum of GTIs [s]
date	2012-06-30T14:35:33	Date and time of file creation	ontime3	20049.561493456	Sum of GTIs [s]
revision	2	Processing version of data	ontime5	20049.643573463	Sum of GTIs [s]
			ontime6	20043.120562494	Sum of GTIs [s]
			ontime7	20049.684613466	Sum of GTIs [s]
			ontime8	20046.279503047	Sum of GTIs [s]
			l1events	1062318	Number of level 1 events

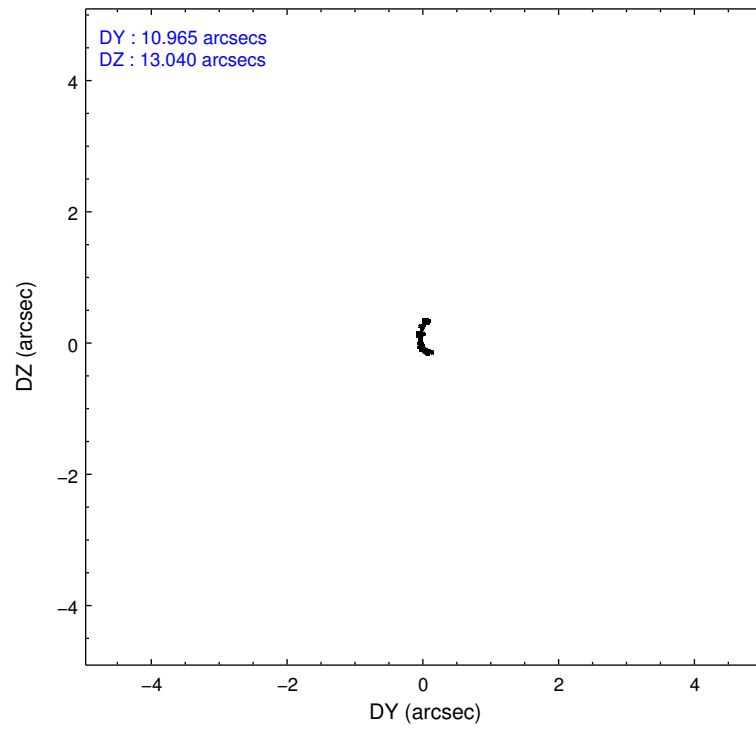
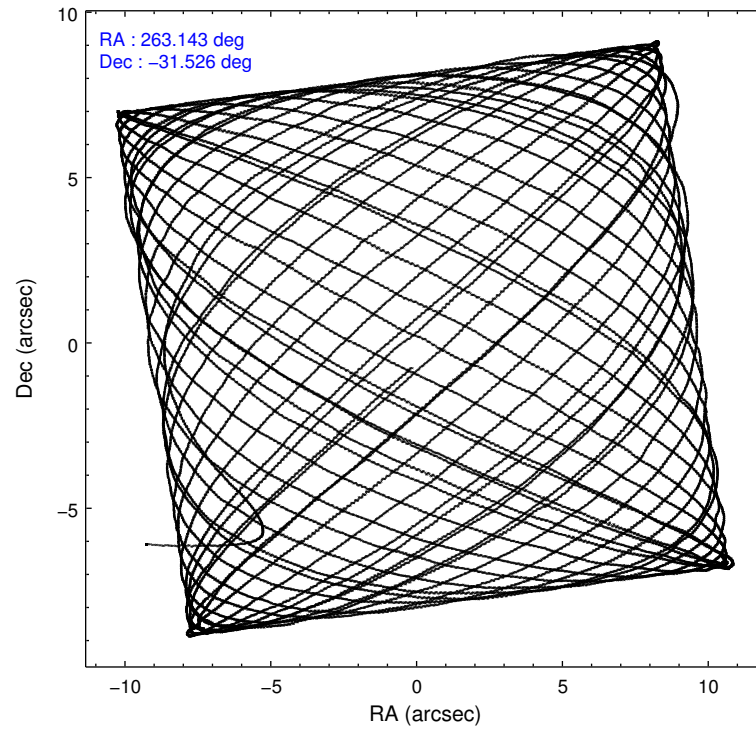
2.1.4 Events

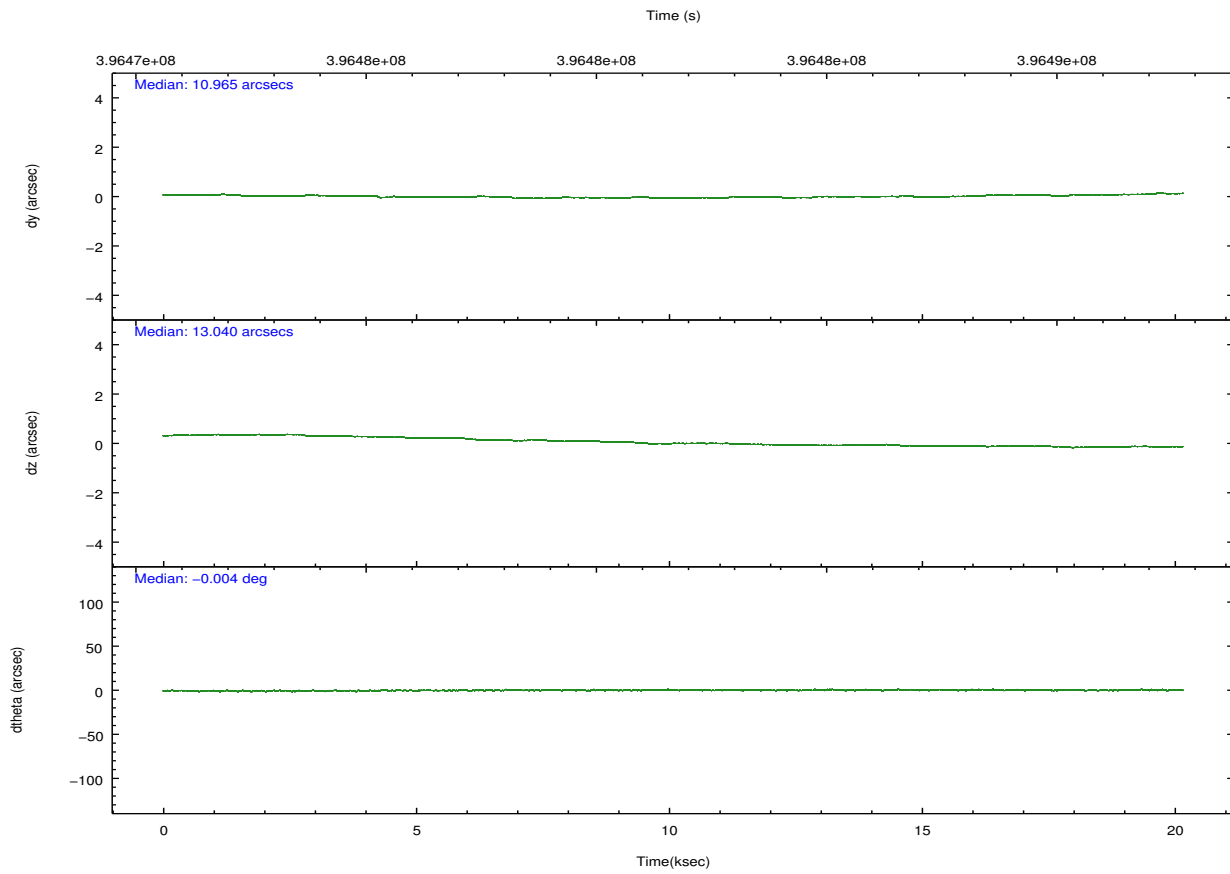
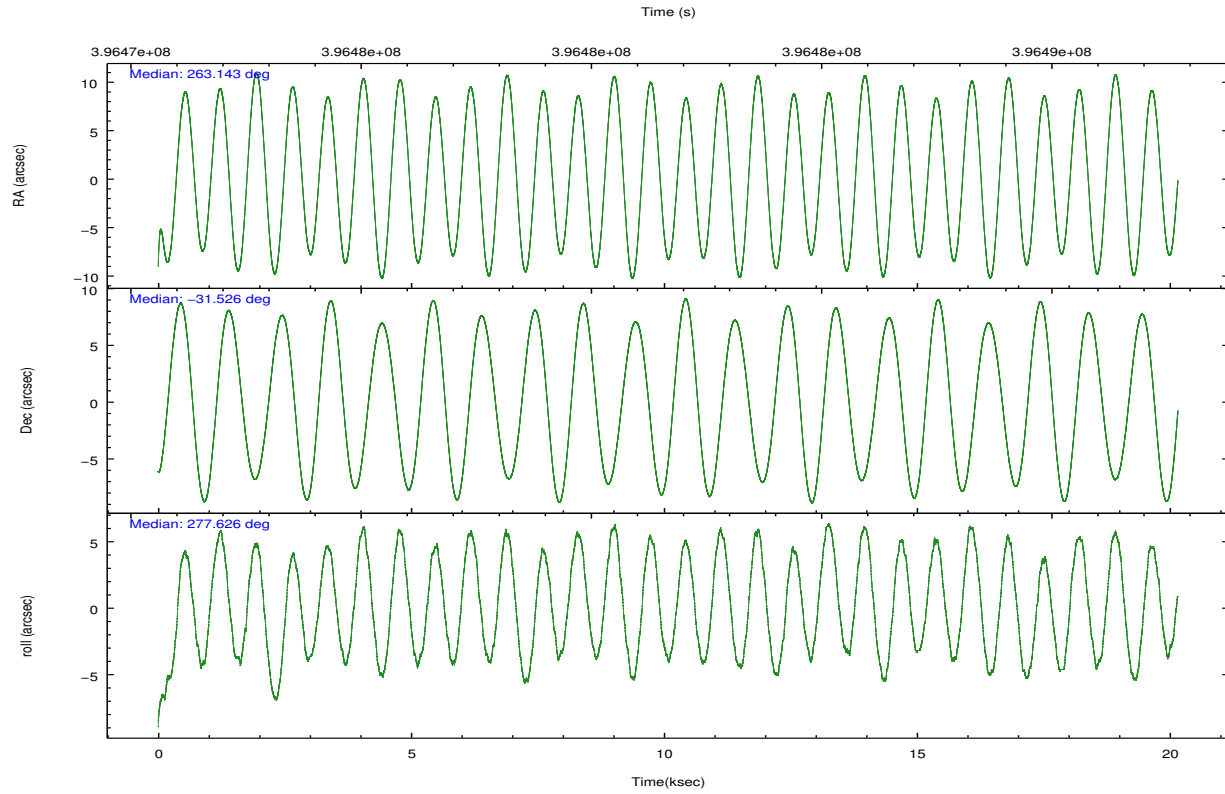
	ccd 2	ccd 3	ccd 5	ccd 6	ccd 7	ccd 8		ccd 2	ccd 3	ccd 5	ccd 6	ccd 7	ccd 8
level 1 events	154650	142206	234453	151634	184422	194953	grade 0 events	6444	6085	15033	6375	7845	16067
rejected events	137664	126123	115531	134126	99851	143304		4%	4%	6%	4%	4%	8%
rejected %	89%	88%	49%	88%	54%	73%	grade 1 events	90	94	401	93	250	160
								0%	0%	0%	0%	0%	0%
							grade 2 events	4007	3520	36034	3883	17471	12013
								2%	2%	15%	2%	9%	6%
							grade 3 events	1734	1706	4311	1780	7641	5410
								1%	1%	1%	1%	4%	2%
							grade 4 events	1745	1706	4167	1746	7675	4976
								1%	1%	1%	1%	4%	2%
							grade 5 events	5814	6621	17363	6762	19239	9765
								3%	4%	7%	4%	10%	5%
							grade 6 events	3060	3072	59414	3729	43964	13196
								1%	2%	25%	2%	23%	6%
							grade 7 events	131756	119402	97730	127266	80337	133366
								85%	83%	41%	83%	43%	68%

2.2 Compared Parameters

Parameter	Planned	Actual	Parameter	Planned	Actual
Instrument	ACIS	ACIS	Obspar format version number	7	7
Detector	ACIS-235678	ACIS-235678	Obspar file type	PREDICTED	ACTUAL
Grating	NONE	NONE	Obspar update status	NONE	UPDATED
Data mode	VFAINT	VFAINT	CCD I0 on	N	N
Observation mode	POINTING	POINTING	CCD I1 on	N	N
[deg] Pointing RA	263.123212	263.1431189496659	CCD I2 on	O3	Y
[deg] Pointing Dec	-31.504857	-31.52629046638623	CCD I3 on	O4	Y
[deg] Pointing Roll	277.468818	277.6358512937908	CCD S0 on	N	N
[mm] SIM focus pos	-0.684267	-0.6828225247311905	CCD S1 on	O5	Y
[mm] SIM defocus	0	0.001444936568705701	CCD S2 on	O1	Y
[mm] SIM translation stage pos	-190.132523	-190.1400660498719	CCD S3 on	Y	Y
[mm] SIM translation stage offset	0	0.00754346686406393	CCD S4 on	O2	Y
[s] Observation start time (MET)	396471734.184000	396470402.69046	CCD S5 on	N	N
Observation start date	2010-07-25T19:01:08	2010-07-25T18:40:02	Number of optional ACIS chips dropped	0	0
[s] Observation end time (MET)	396491734.184000	396492039.41657	On-chip summing requested	N	N
Observation end date	2010-07-26T00:34:28	2010-07-26T00:40:39	Subarray requested	NONE	NONE
Read mode	TIMED	TIMED	Alternating exposures requested	N	N
			[s] Primary exposure time	0.000000	3.2

2.3 Aspect



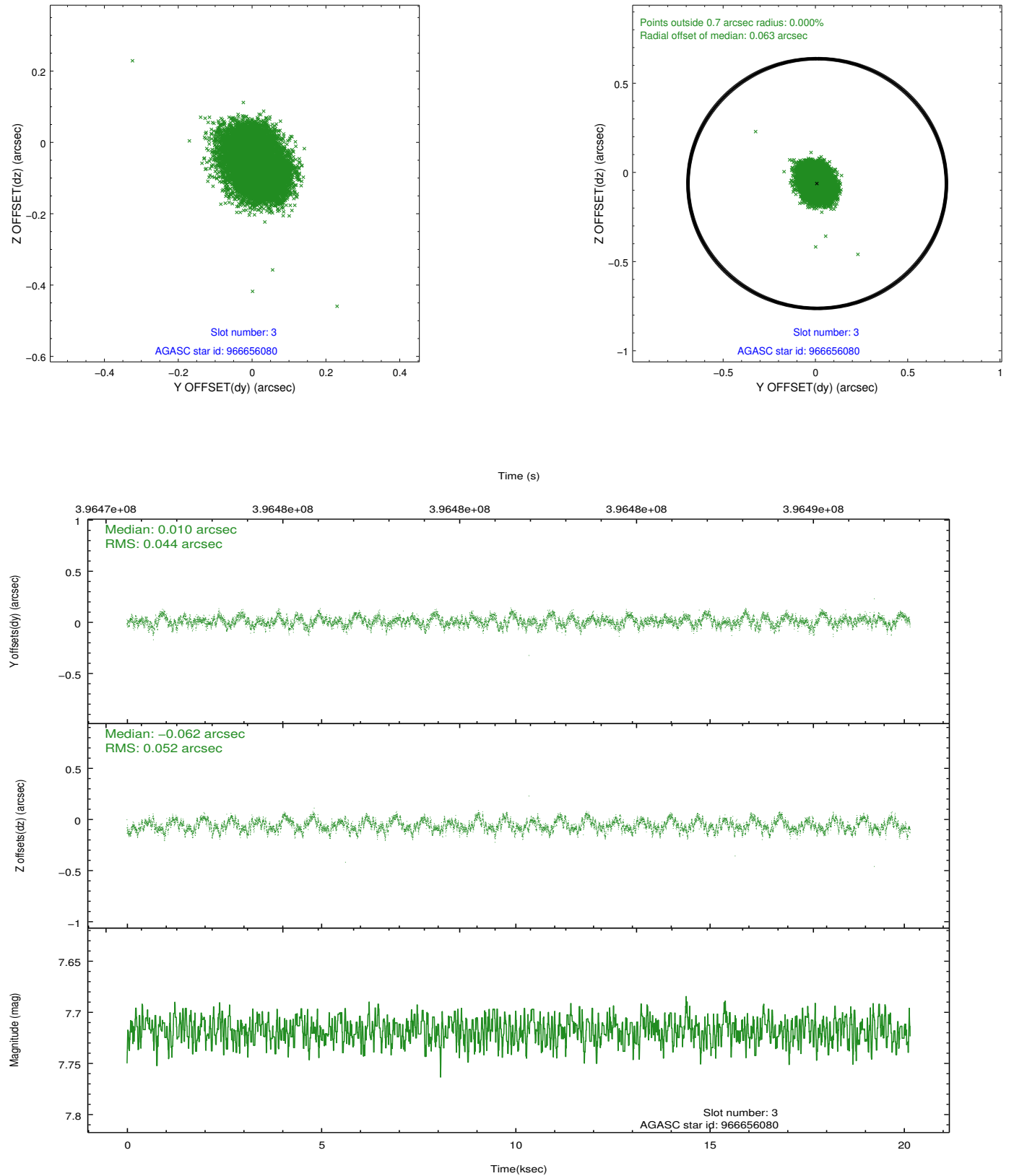


Slot Statistics

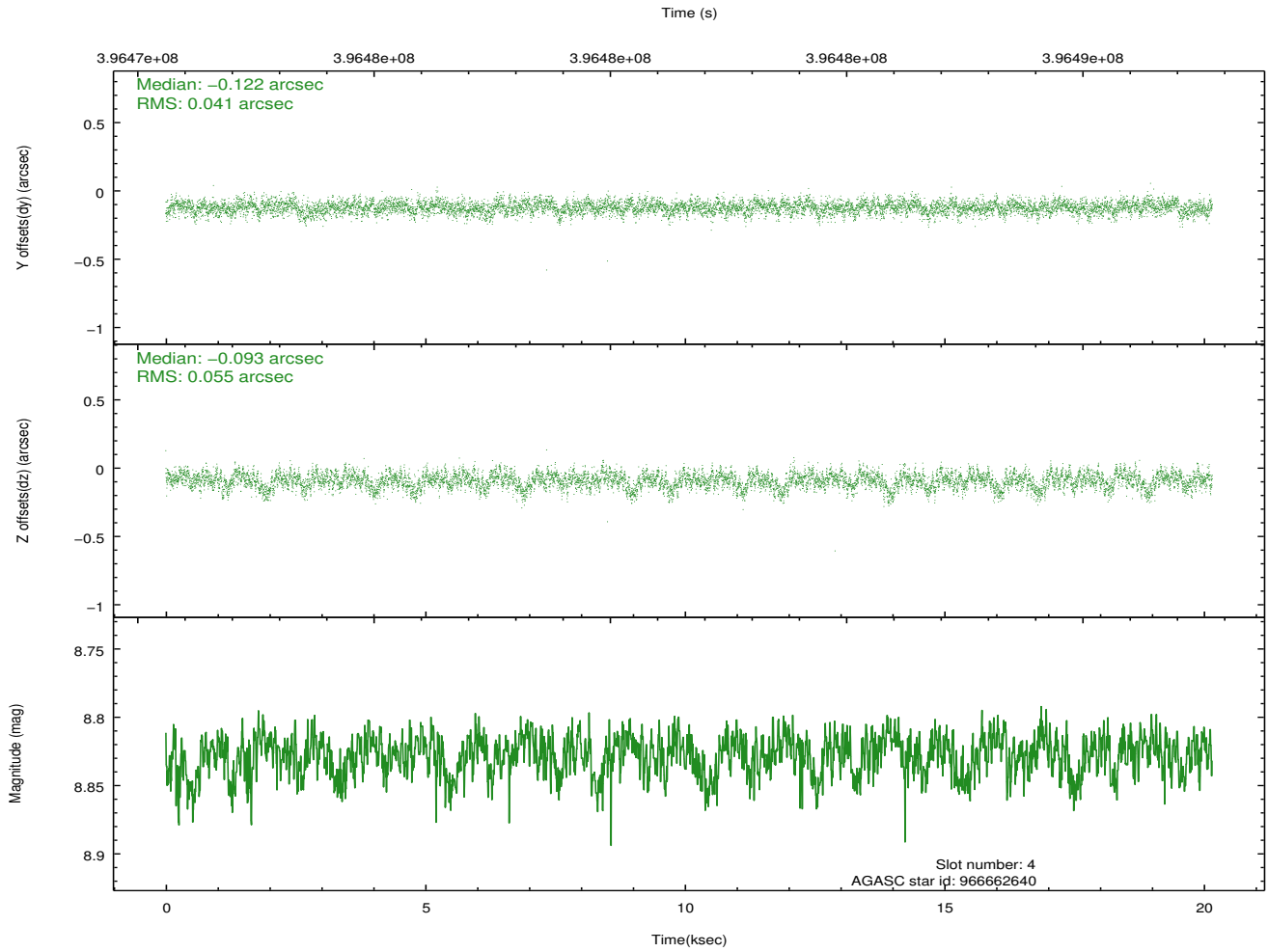
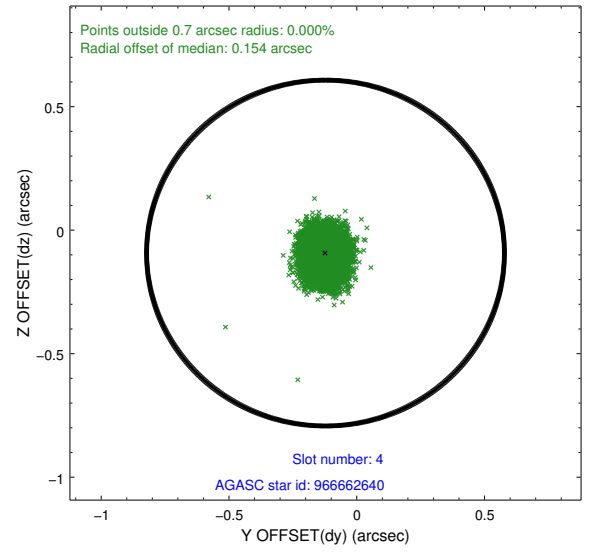
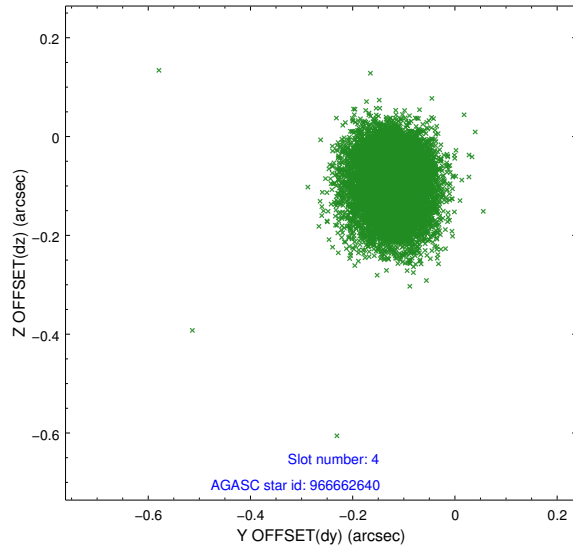
slot	status	id	mag	n_pts	med_dy	med_dz	dr1	dr2	ra	dec	mean_y	mean_z
0	FID	ACIS-S-1	7.01	4918	0.047	-0.022	0.011	0.018	0.000000	0.000000	932.20	-1730.10
1	FID	ACIS-S-4	7.02	4918	0.073	-0.003	0.008	0.013	0.000000	0.000000	2149.78	173.86
2	FID	ACIS-S-5	7.04	4917	-0.146	0.037	0.007	0.012	0.000000	0.000000	-1816.58	167.78
3	GUIDE	966656080	7.72	9835	0.010	-0.062	0.075	0.114	262.904712	-31.872685	1227.26	-834.15
4	GUIDE	966662640	8.83	9833	-0.122	-0.093	0.072	0.120	262.547667	-31.698400	466.94	-1838.93
5	GUIDE	967181648	8.20	9835	0.167	0.072	0.071	0.115	262.667514	-32.061716	1810.69	-1639.07
6	GUIDE	966787448	8.54	9835	-0.053	0.005	0.065	0.105	263.341993	-31.095036	-1374.19	860.31
7	GUIDE	966787712	8.36	9833	-0.001	0.082	0.073	0.117	263.530944	-31.066254	-1399.91	1451.82

2.4 Star Slots

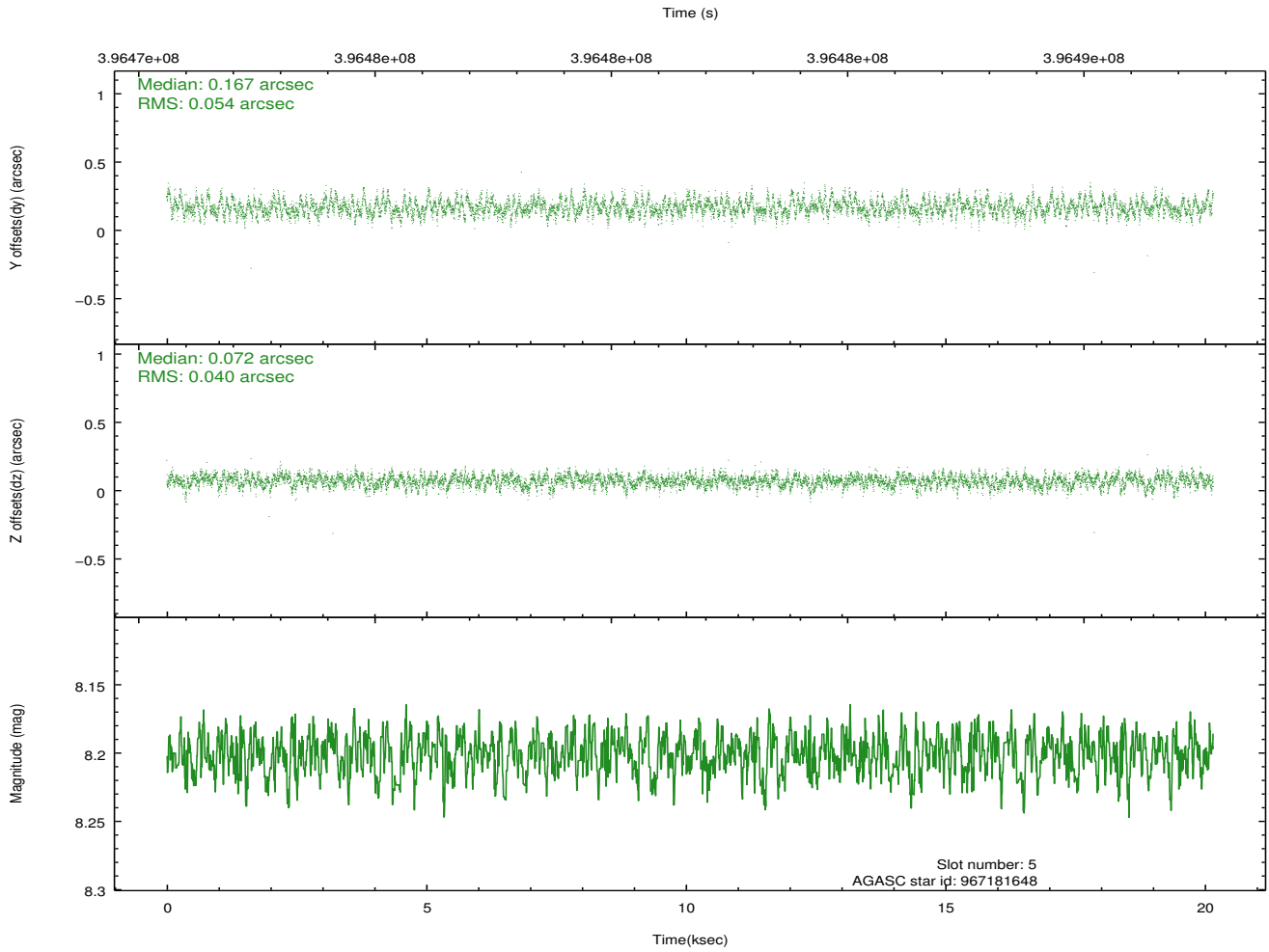
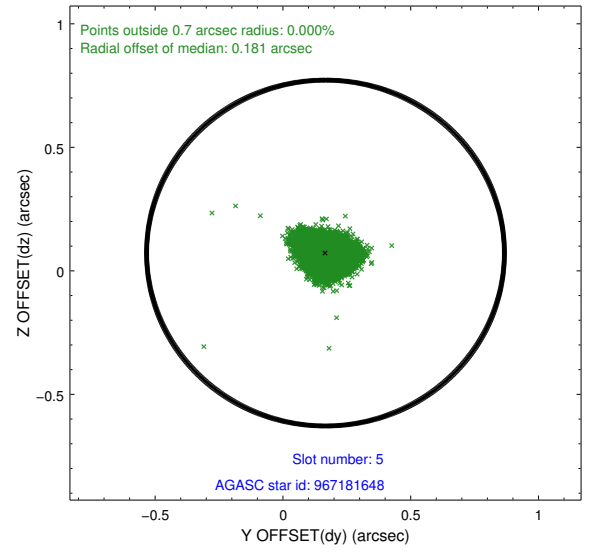
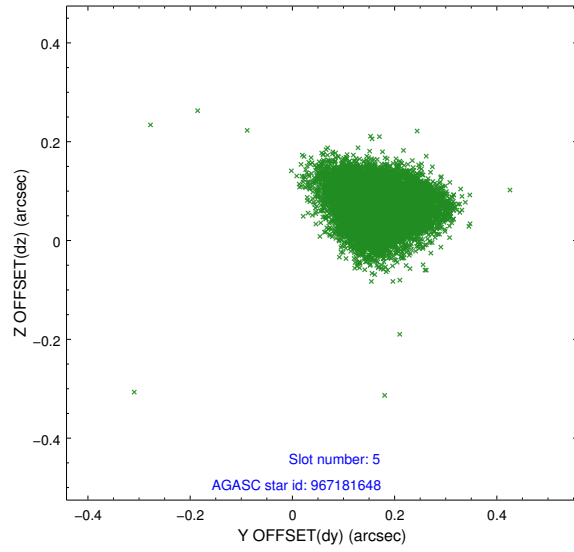
2.4.1 Slot 3



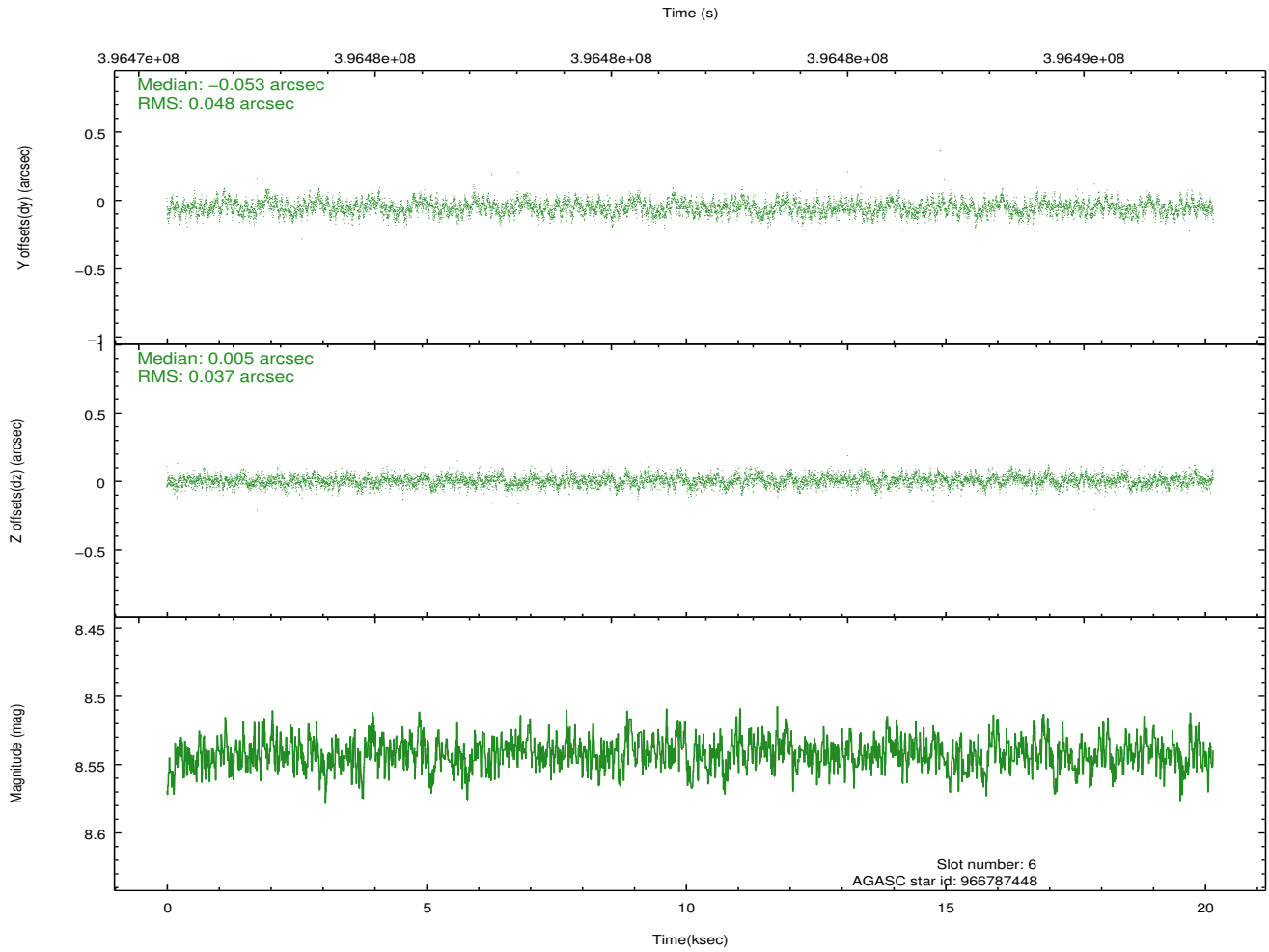
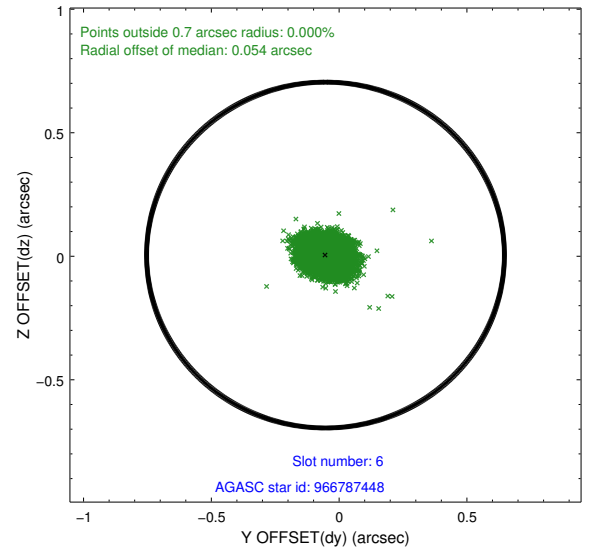
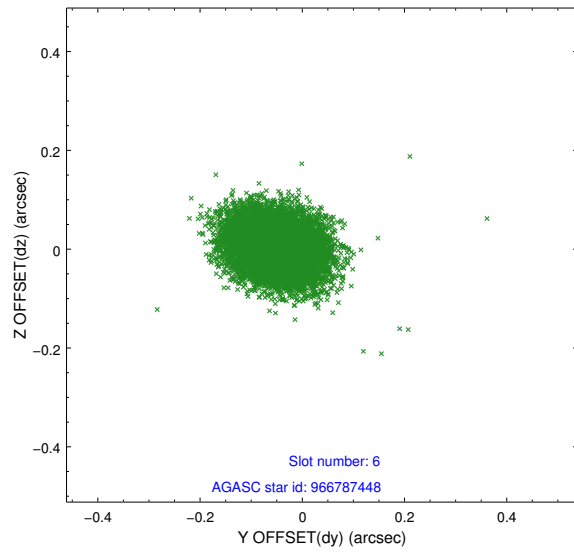
2.4.2 Slot 4



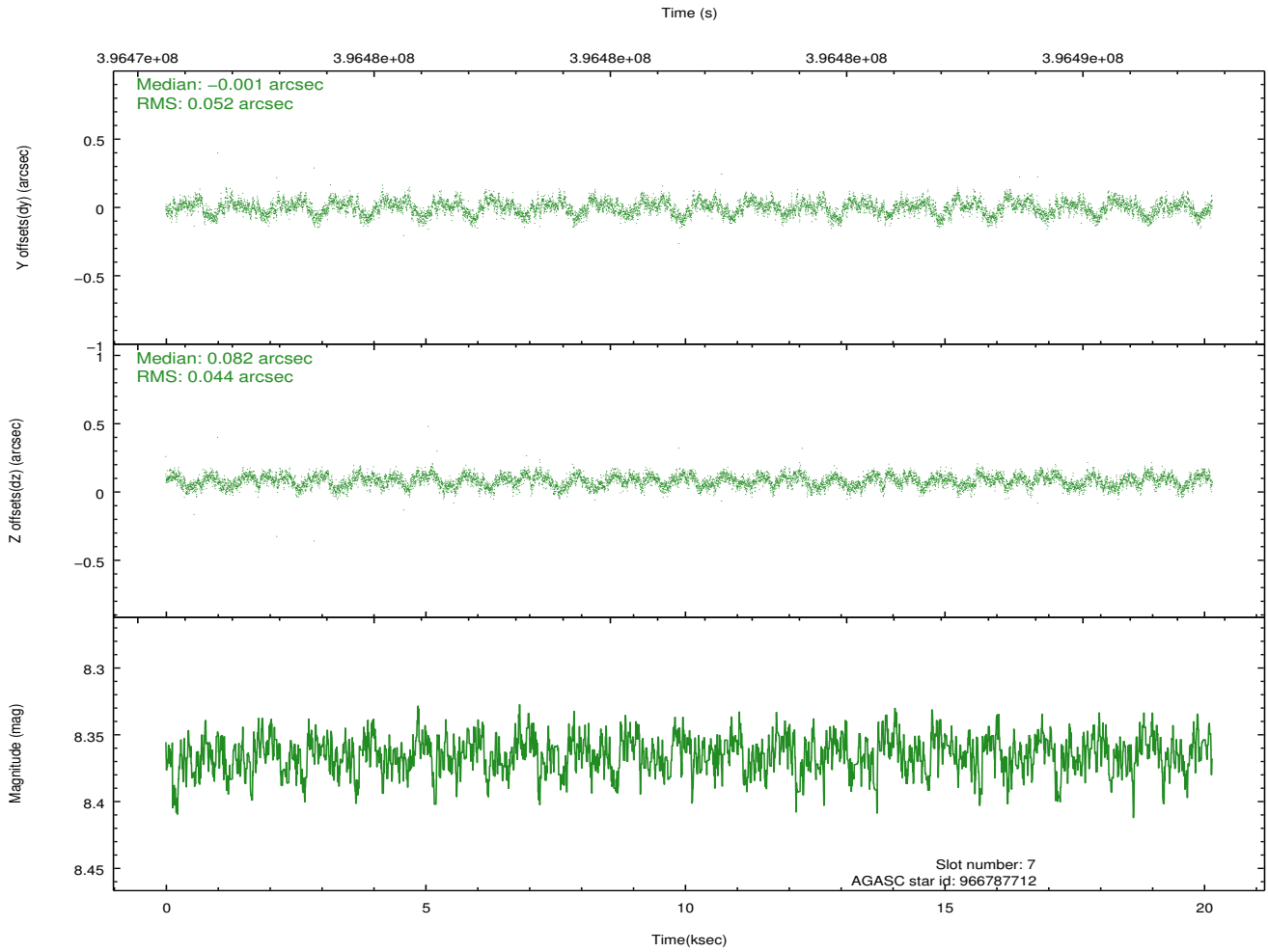
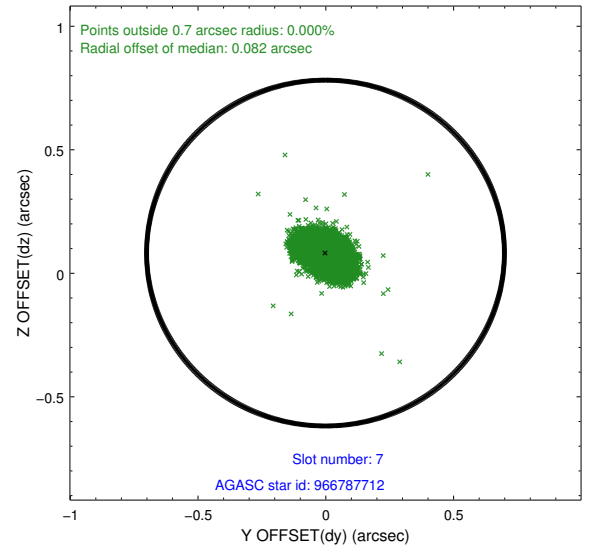
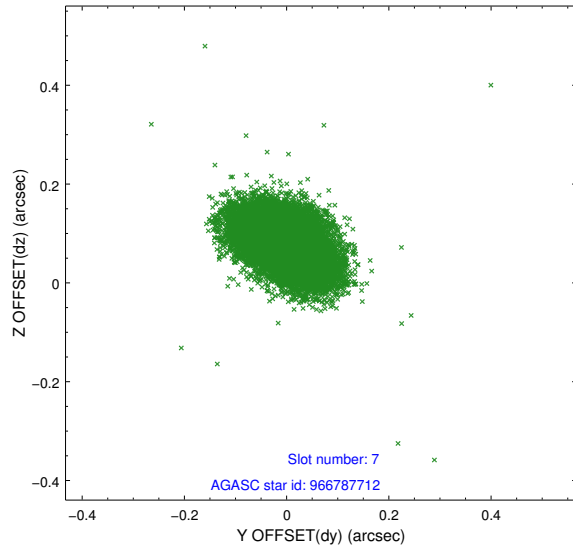
2.4.3 Slot 5



2.4.4 Slot 6

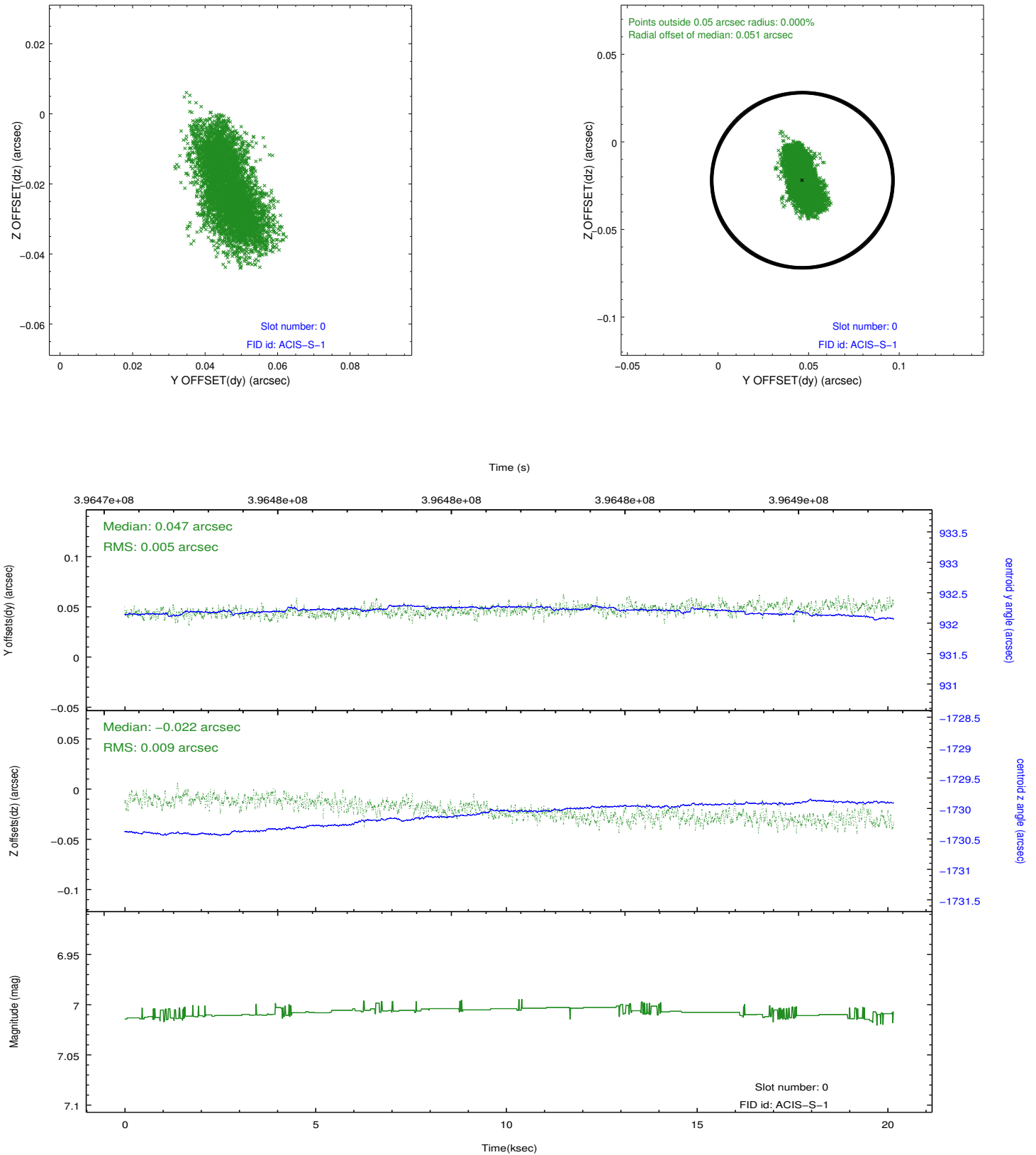


2.4.5 Slot 7

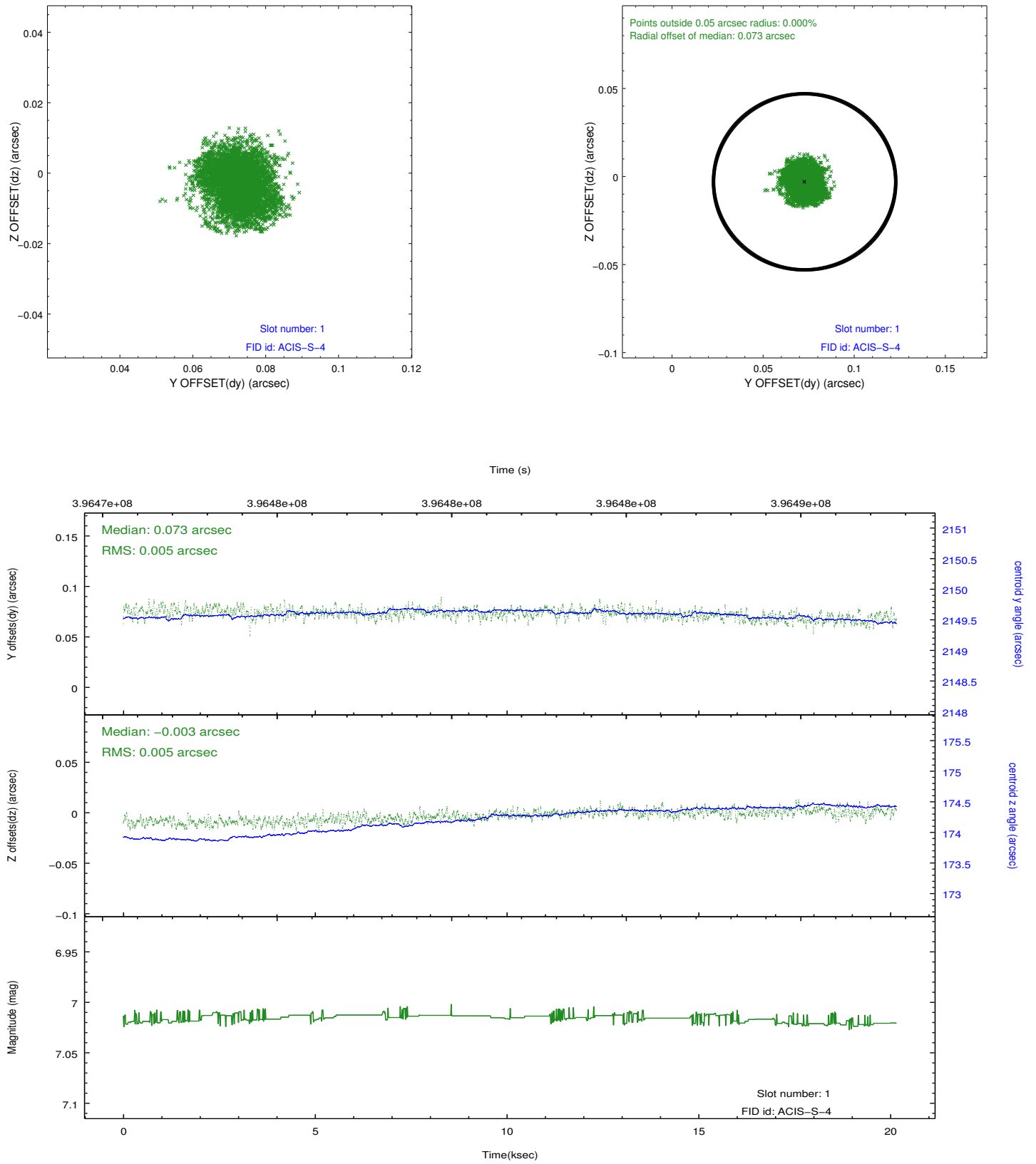


2.5 FID Slots

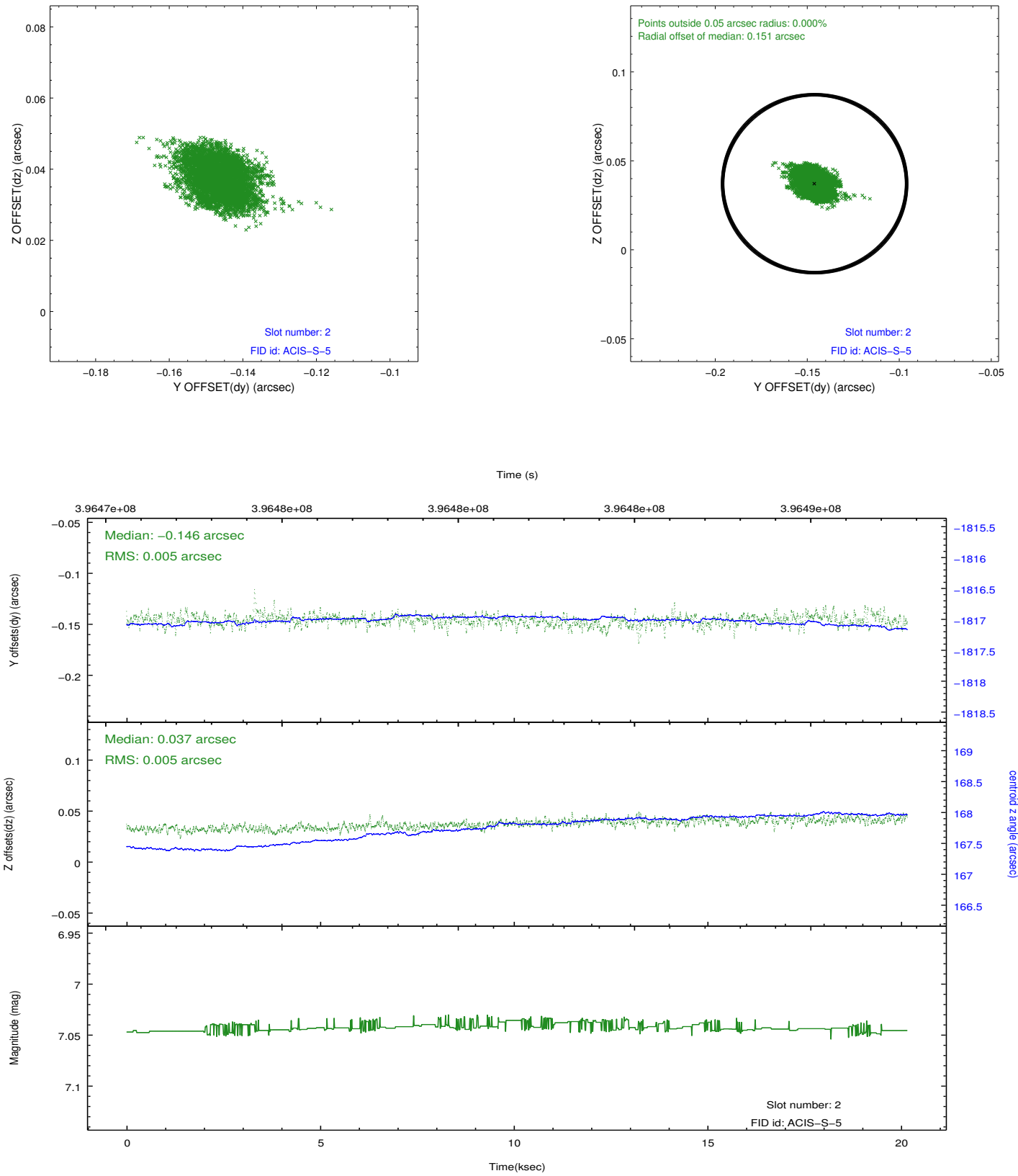
2.5.1 Slot 0



2.5.2 Slot 1



2.5.3 Slot 2



A Summary

A.1 Status

V&V Scientist	Jen Lauer
V&V Date (YYYY-MM-DD)	2012.07.09
V&V Edition	1
V&V Disposition and Status	OK
V&V Charge Time	20.049684613705

A.2 Comments