

# V&V Reference Report

## L2 ASCDS Version : 8.4.5

Observation 10885 - L2 Version 3  
Chandra X-Ray Center

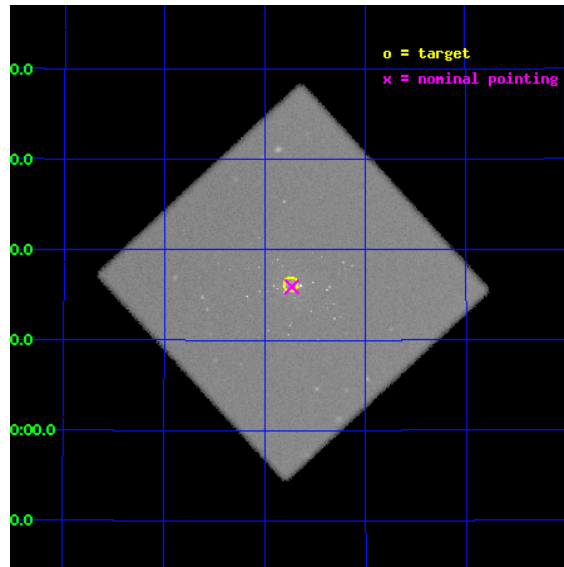
L2 Processing Date : Aug 13 2012

## Contents

<b>1</b>	<b>Front</b>	<b>2</b>
<b>2</b>	<b>OBI</b>	<b>3</b>
2.1	OBI . . . . .	3
2.1.1	Images . . . . .	3
2.1.2	Parameters . . . . .	4
2.1.3	Events . . . . .	4
2.2	Compared Parameters . . . . .	5
2.3	Aspect . . . . .	6
2.4	Star Slots . . . . .	9
2.4.1	Slot 3 . . . . .	9
2.4.2	Slot 4 . . . . .	10
2.4.3	Slot 5 . . . . .	11
2.4.4	Slot 6 . . . . .	12
2.4.5	Slot 7 . . . . .	13
2.5	FID Slots . . . . .	14
2.5.1	Slot 0 . . . . .	14
2.5.2	Slot 1 . . . . .	15
2.5.3	Slot 2 . . . . .	16
<b>A</b>	<b>Summary</b>	<b>17</b>
A.1	Status . . . . .	17
A.2	Comments . . . . .	17

# 1 Front

seq_num	300262	Sequence number
obs_id	10885	Observation id
title	Resolving short supersoft source states of optical novae in the core of M31	Proposal title
observer	Dr. Wolfgang Pietsch	Principal investigator
object	M31	Source name
ra_targ	10.684583	Observer's specified target RA [deg]
dec_targ	41.269278	Observer's specified target Dec [deg]
ra_nom	10.682714347123	Nominal RA [deg]
dec_nom	41.26530748907	Nominal Dec [deg]
roll_nom	272.29833364727	Nominal Roll [deg]
revision	3	Processing version of data
ontime	18499.200933516	[s]
livetime	18267.779908923	Ontime multiplied by DTCOR
l2events	1490959	Number of level 2 events

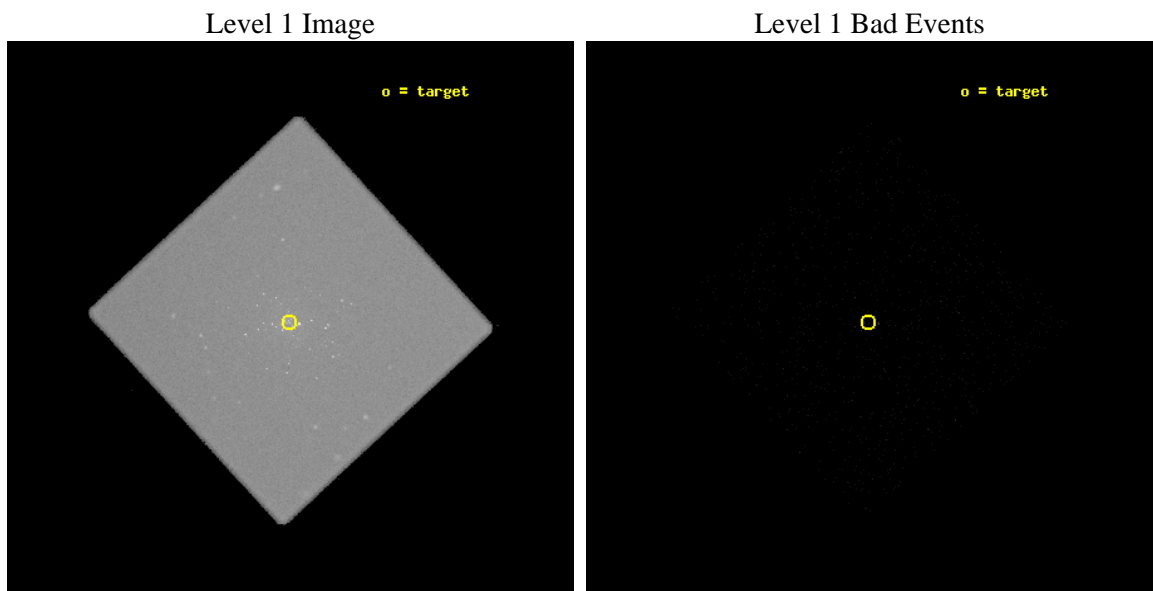




## 2 OBI

### 2.1 OBI

#### 2.1.1 Images



### 2.1.2 Parameters

obi_num	0	Obi number	sched_exp_time	18400.000000	[s] Scheduled observation exposure time
ascdsver	8.4.5	Processing system revision	ontime	18499.200933516	[s]
caldbver	4.5.1.1	&#160	l1events	2145346	Number of level 1 events
date	2012-08-13T17:51:27	Date and time of file creation			
revision	3	Processing version of data			

### 2.1.3 Events

#### Level 1 Events

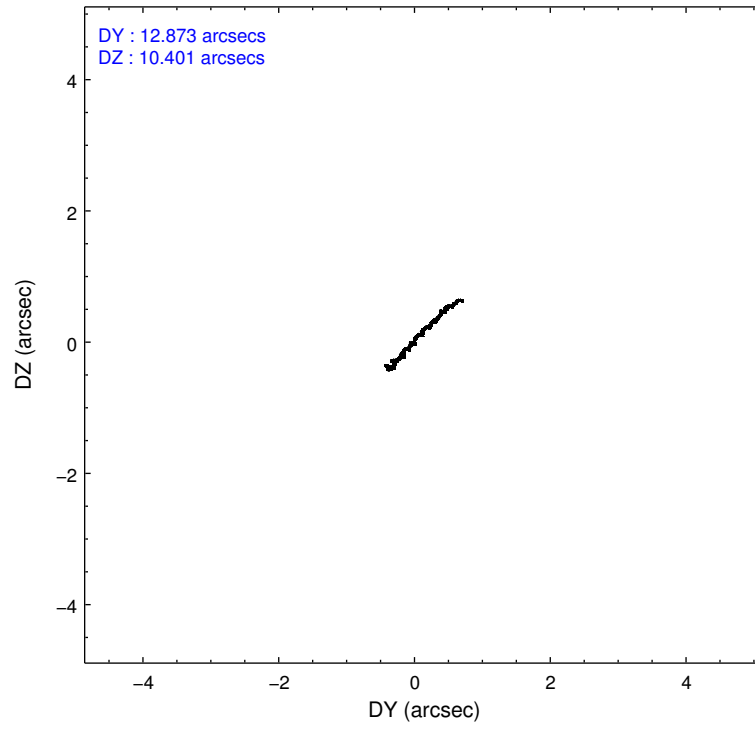
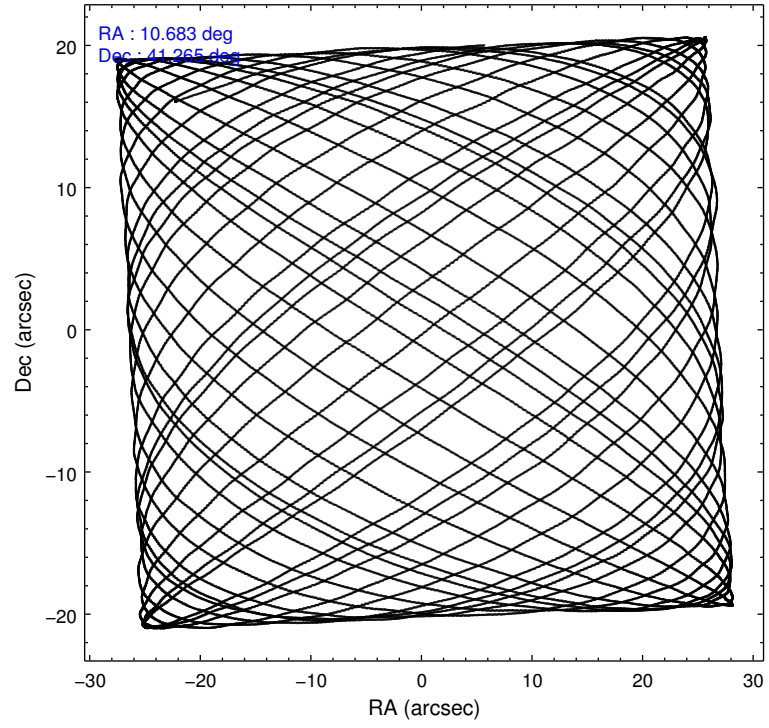
	<b>segment 0</b>
level 1 events	2145346
rejected events	10152
rejected %	0%

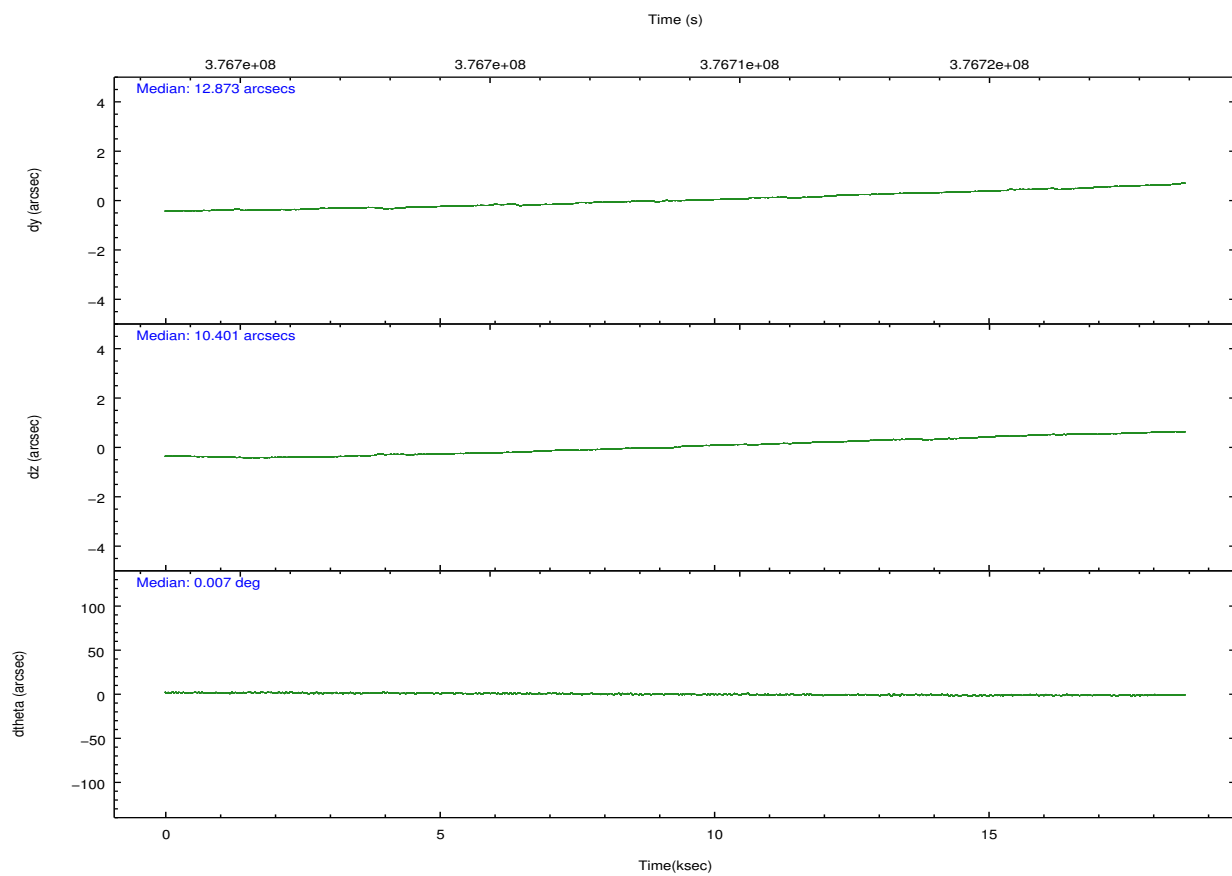
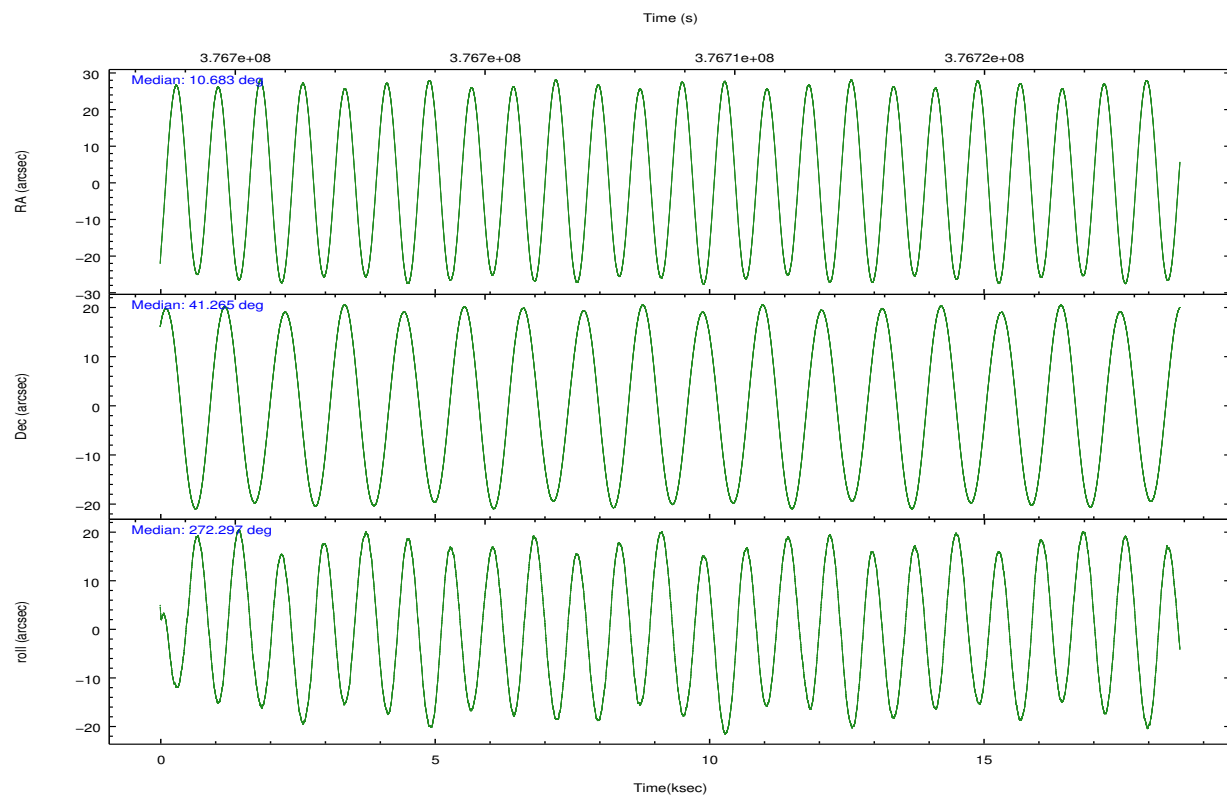
## 2.2 Compared Parameters

Parameter	Planned	Actual
Instrument	HRC	HRC
Detector	HRC-I	HRC-I
Grating	NONE	NONE
Data mode	OBSERVING	OBSERVING
Observation mode	POINTING	POINTING
[deg] Pointing RA	10.662674	10.6827143471227
[deg] Pointing Dec	41.287948	41.26530748906965
[deg] Pointing Roll	272.407050	272.2983336472696
[mm] SIM focus pos	-1.040293	-1.038866356238299
[mm] SIM defocus	0	0.001426264420575141
[mm] SIM translation stage pos	126.985494	126.9829799899862
[mm] SIM translation stage offset	0	0.002508901615314585
[s] Observation start time (MET)	376699594.184000	376699151.57355
Observation start date	2009-12-08T22:45:28	2009-12-08T22:39:11
[s] Observation end time (MET)	376717994.184000	376718814.66204
Observation end date	2009-12-09T03:52:08	2009-12-09T04:06:54

Parameter	Planned	Actual
Obspar format version number	7	7
Obspar file type	PREDICTED	ACTUAL
Obspar update status	NONE	UPDATED

## 2.3 Aspect



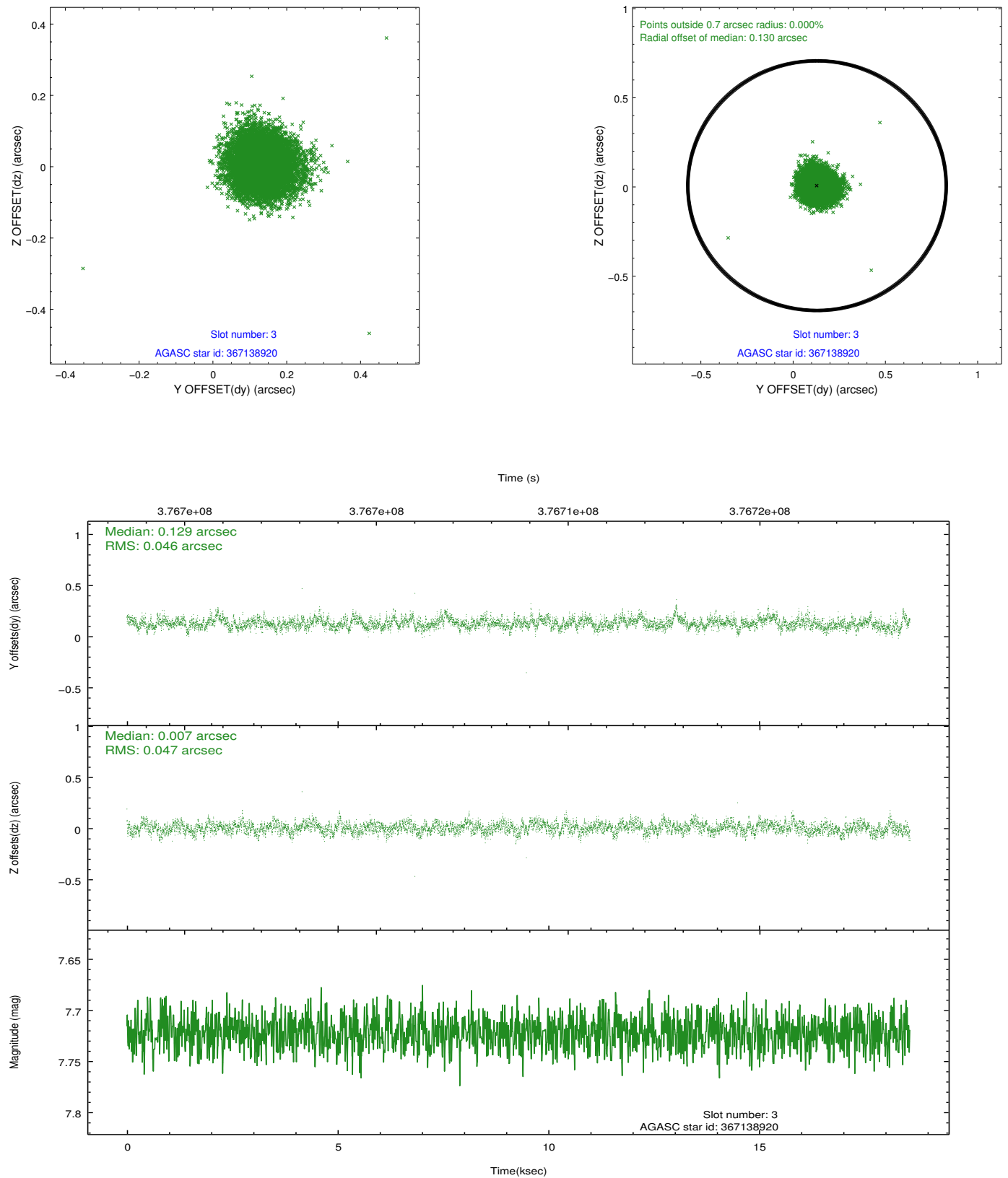


### Slot Statistics

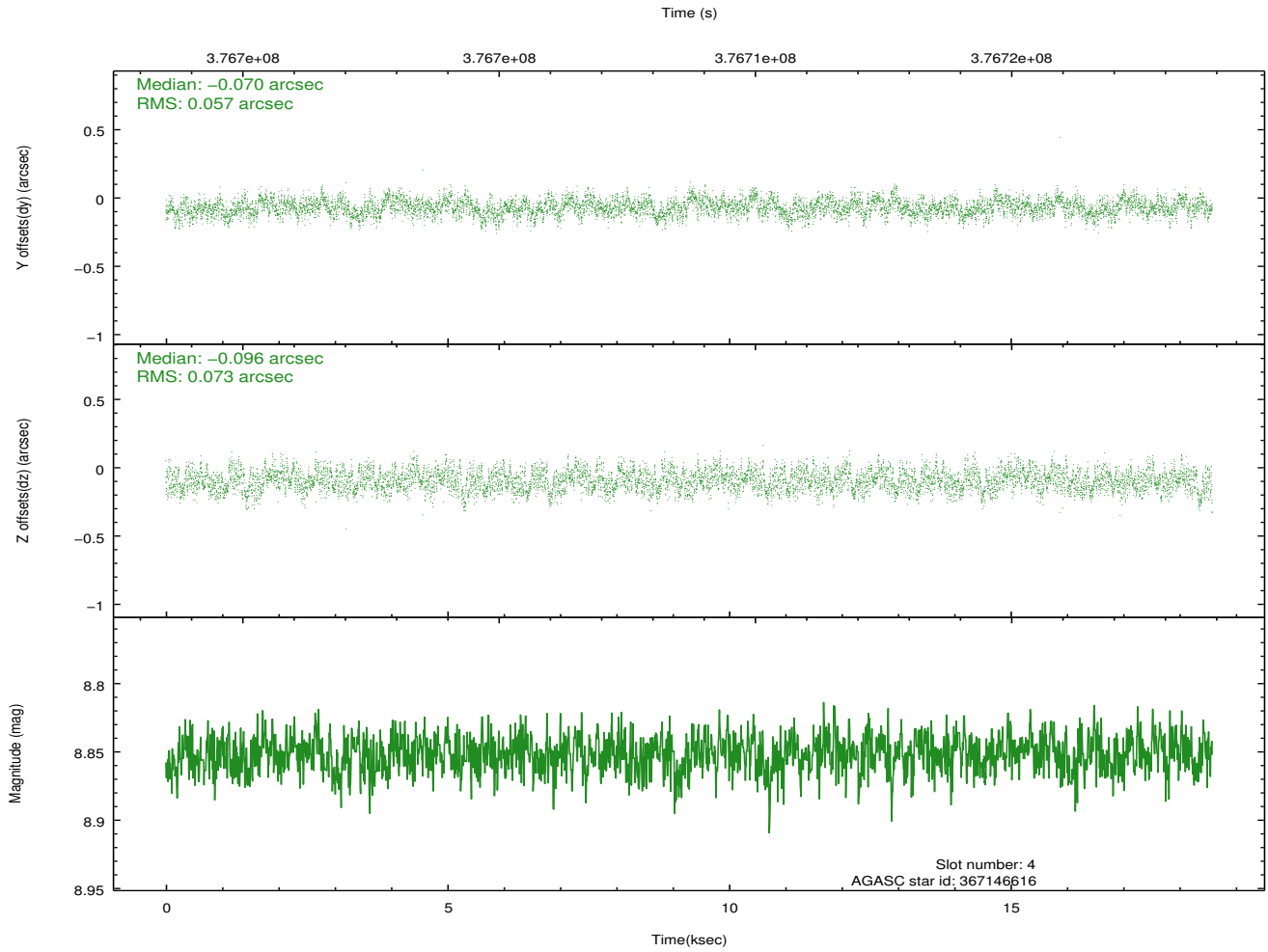
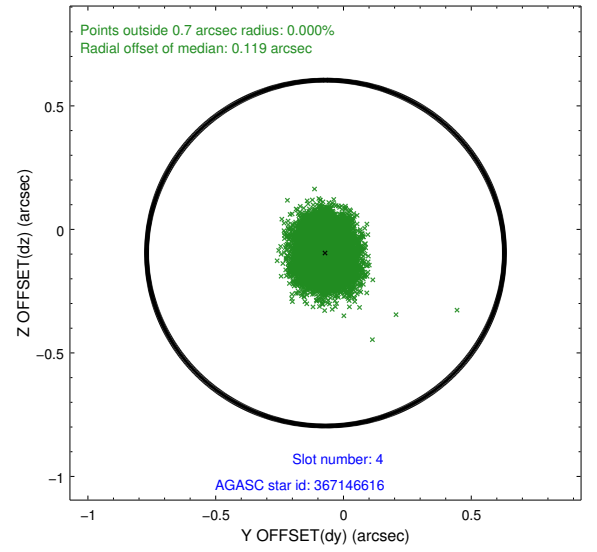
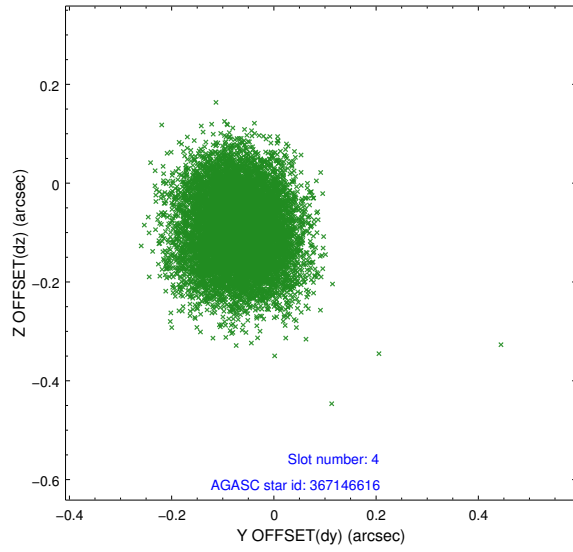
slot	status	id	mag	n_pts	med_dy	med_dz	dr1	dr2	ra	dec	mean_y	mean_z
0	FID	HRC-I-1	6.92	4532	-0.070	0.016	0.009	0.014	0.000000	0.000000	-768.69	-1298.40
1	FID	HRC-I-2	6.97	4532	0.191	-0.084	0.019	0.027	0.000000	0.000000	844.03	-1300.32
2	FID	HRC-I-3	7.01	4531	0.001	-0.020	0.020	0.030	0.000000	0.000000	-1196.98	1005.83
3	GUIDE	367138920	7.72	9064	0.129	0.007	0.069	0.113	11.513485	40.808909	1810.00	2245.33
4	GUIDE	367146616	8.85	9060	-0.070	-0.096	0.101	0.157	11.418645	41.190163	429.08	2031.99
5	GUIDE	367148872	7.23	9065	0.036	0.070	0.080	0.127	10.505940	40.688258	2139.51	-517.89
6	GUIDE	367663272	9.28	9032	-0.099	-0.053	0.112	0.184	10.656279	41.699429	-1480.05	44.17
7	GUIDE	367674552	8.85	9059	-0.001	0.074	0.085	0.137	11.016238	41.570845	-979.41	994.51

## 2.4 Star Slots

### 2.4.1 Slot 3

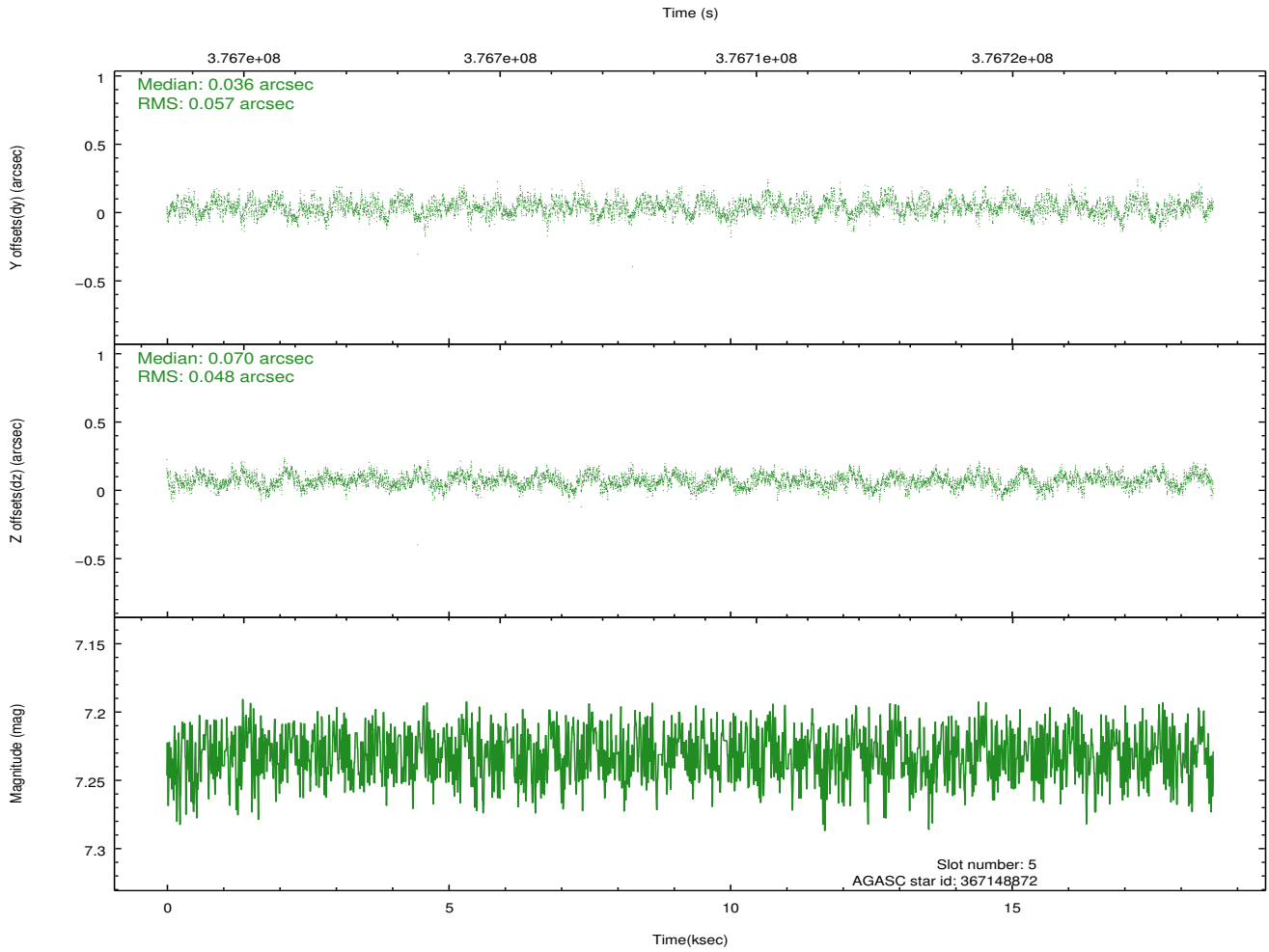
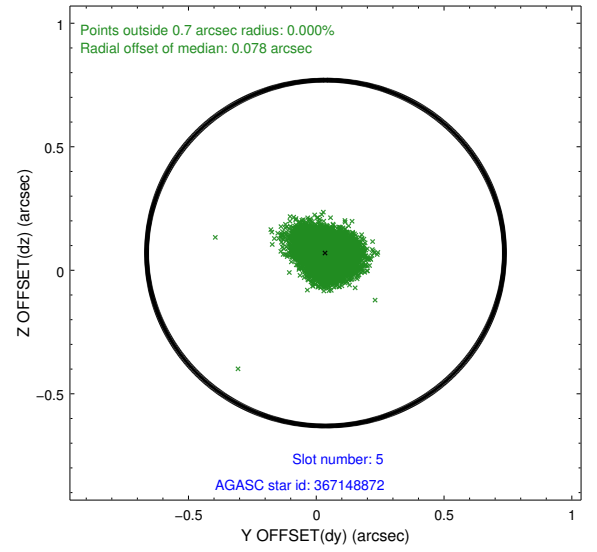
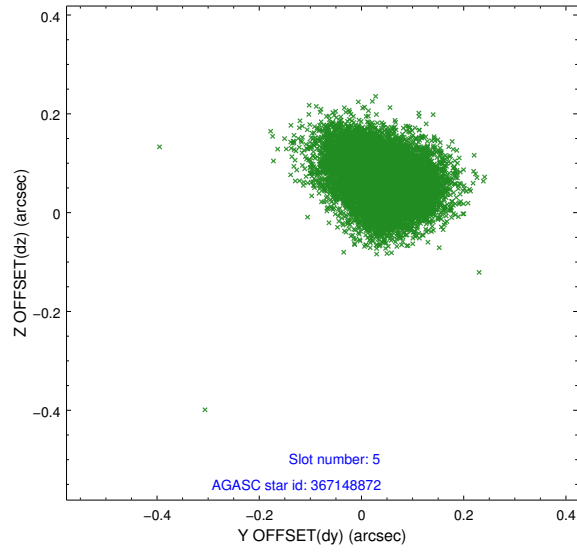


## 2.4.2 Slot 4

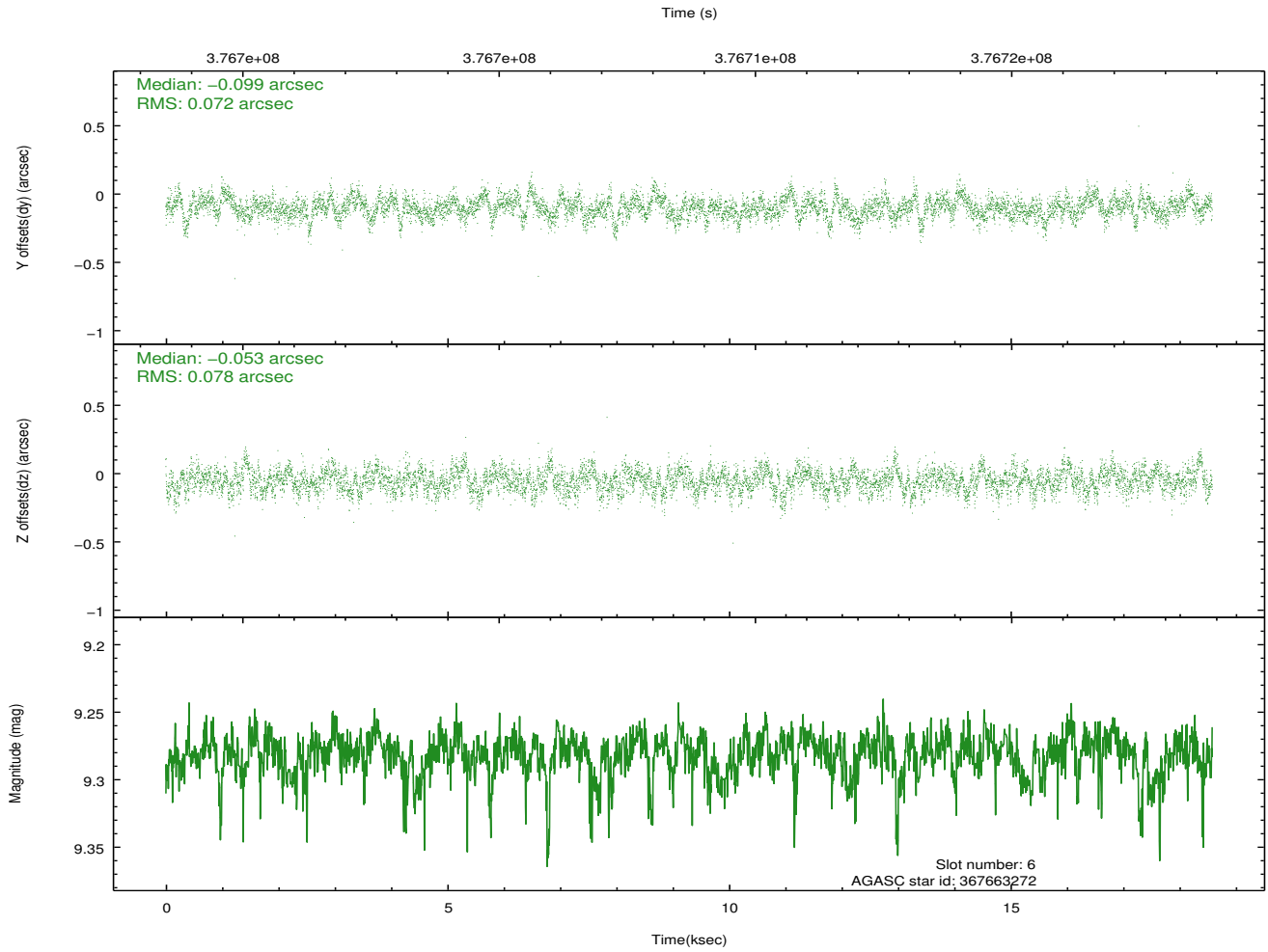
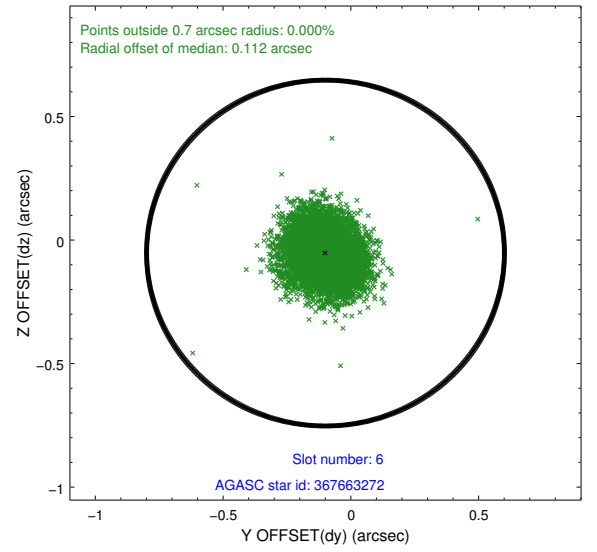
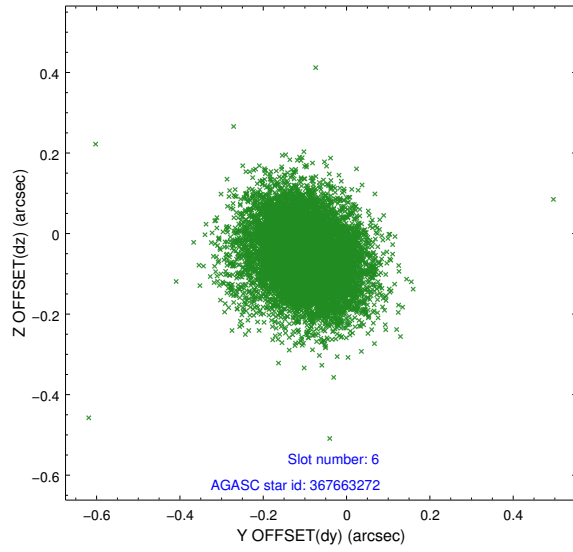




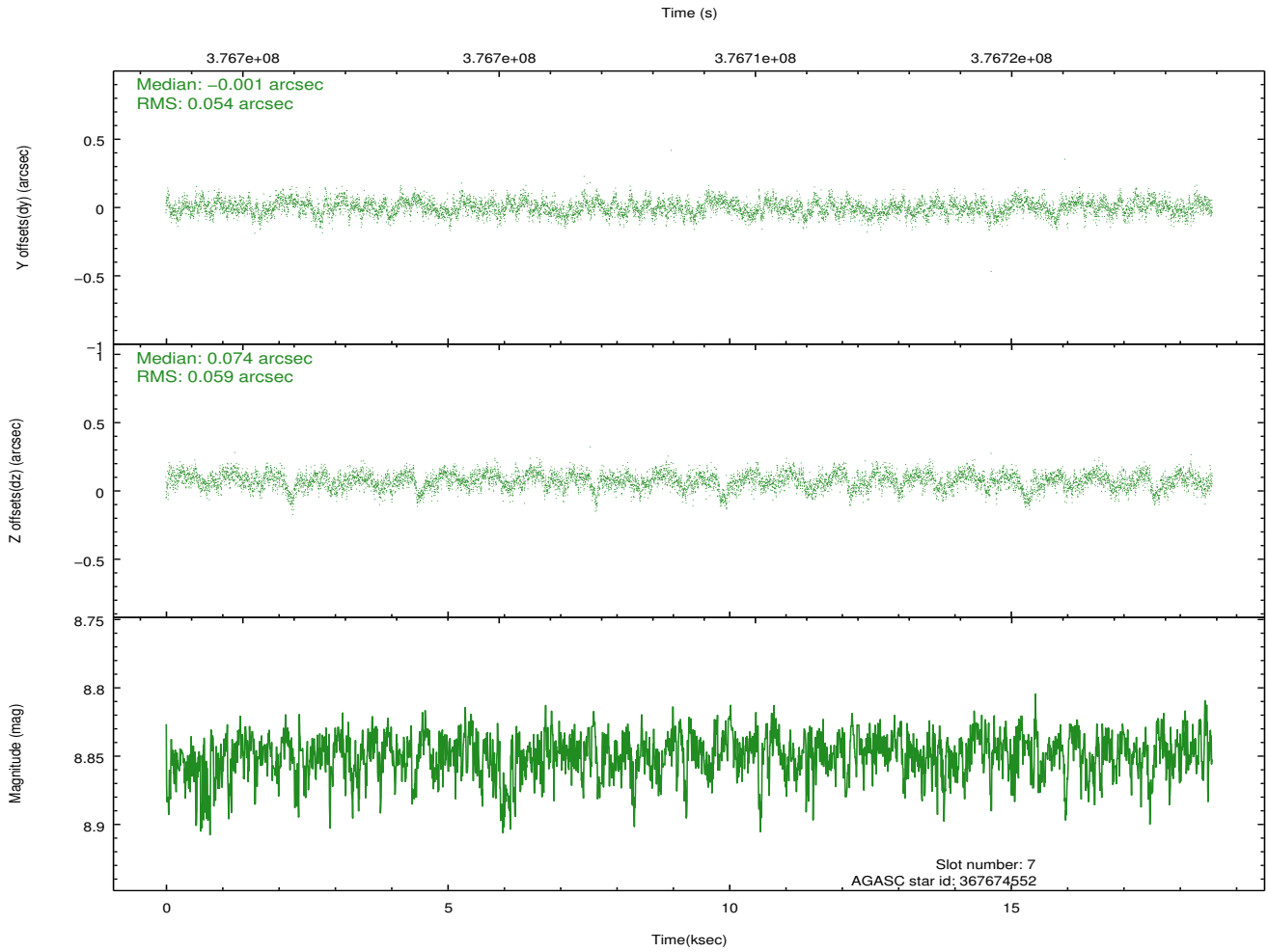
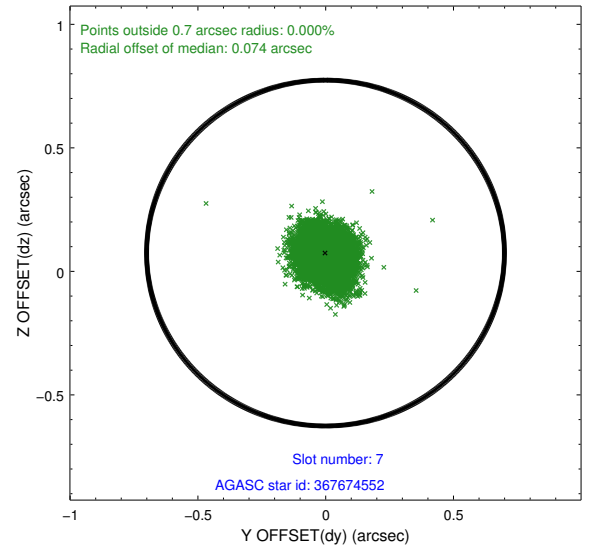
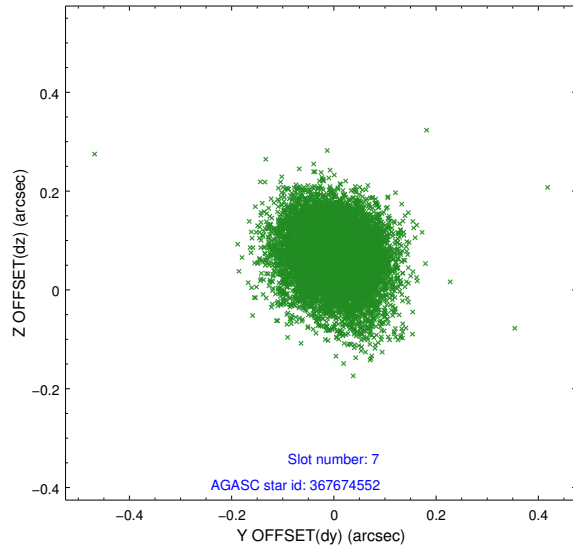
### 2.4.3 Slot 5



## 2.4.4 Slot 6

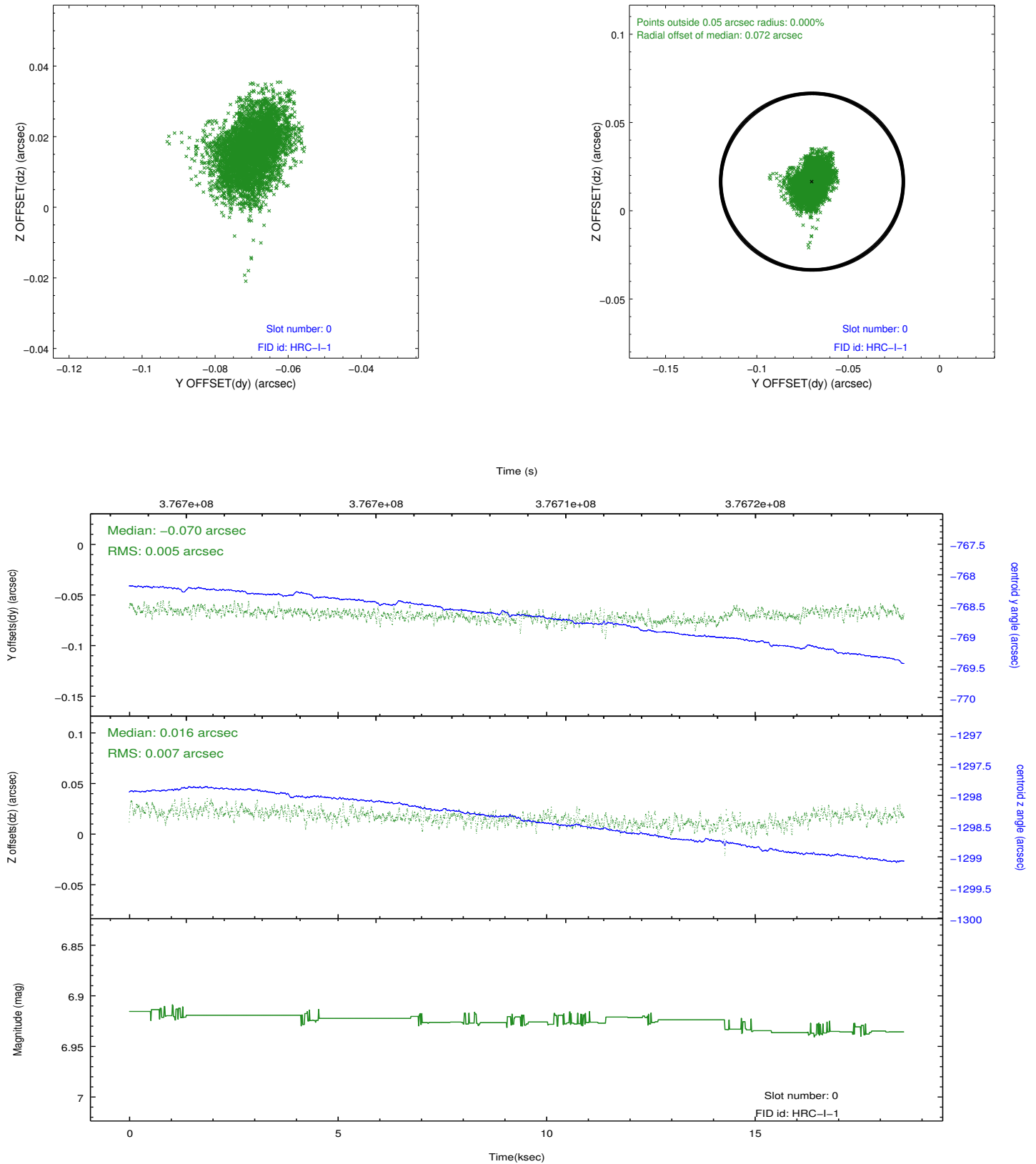


## 2.4.5 Slot 7

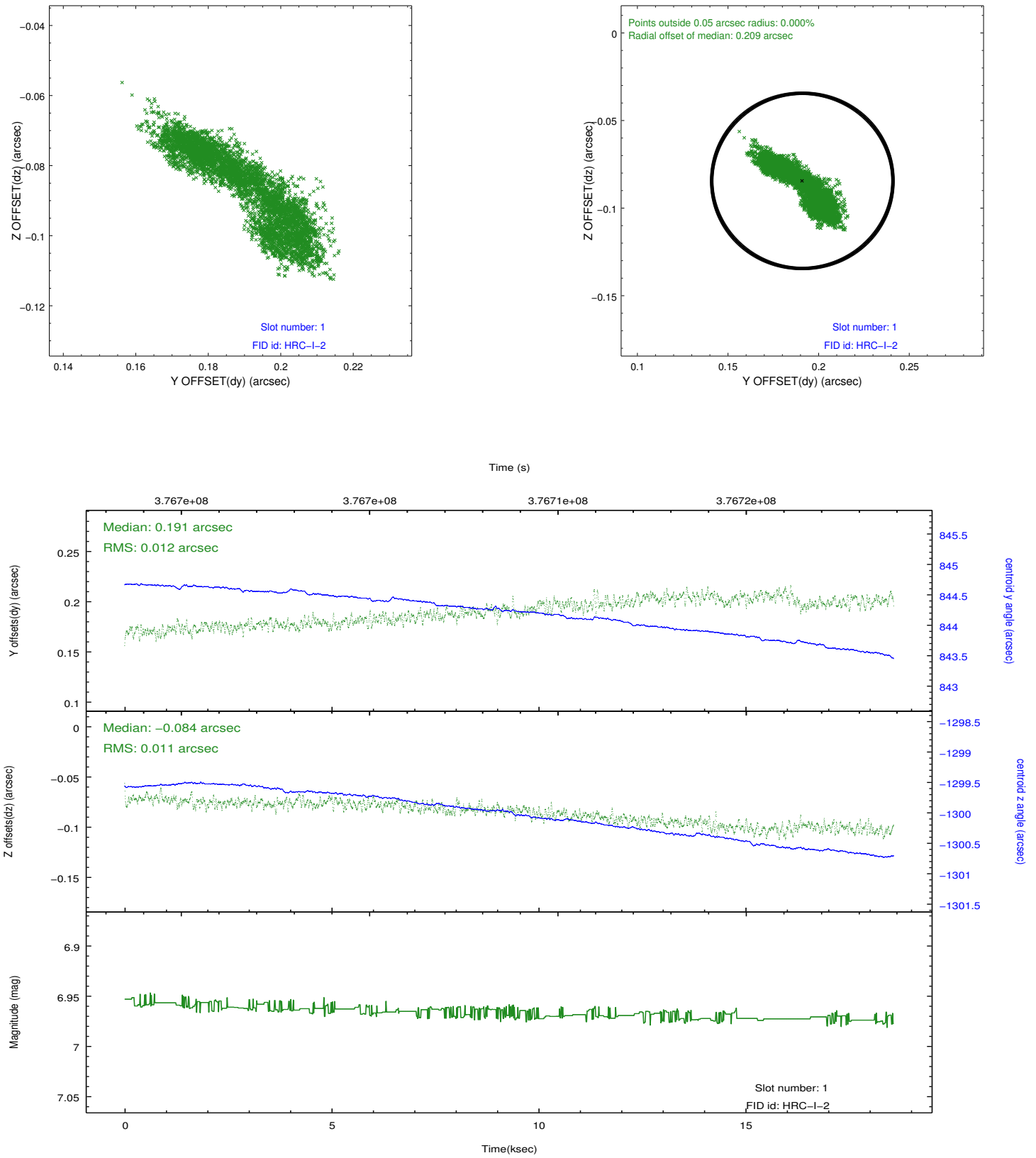


## 2.5 FID Slots

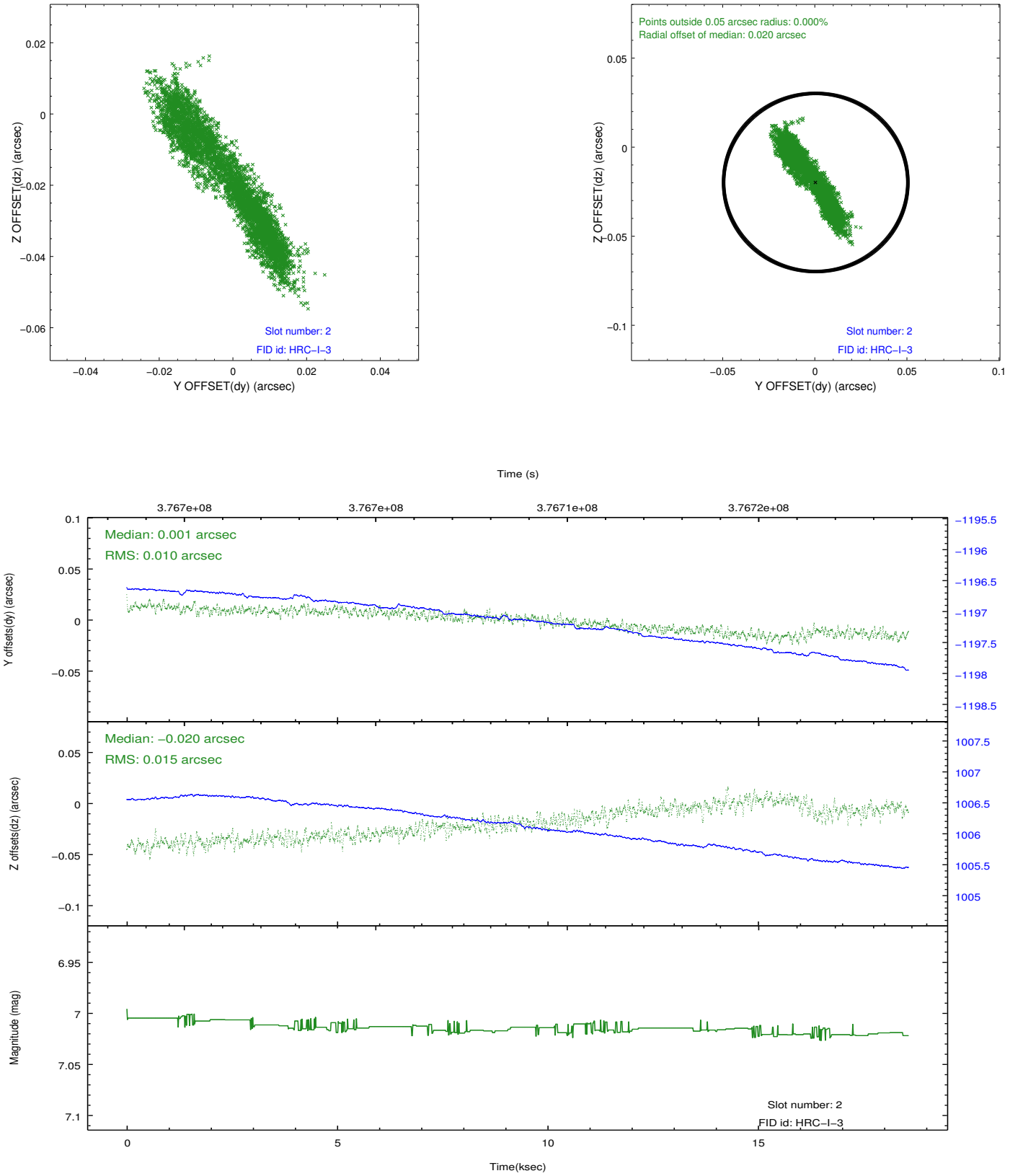
### 2.5.1 Slot 0



## 2.5.2 Slot 1



### 2.5.3 Slot 2



## A Summary

### A.1 Status

V&V Scientist	Jen Lauer
V&V Date (YYYY-MM-DD)	2012.08.22
V&V Edition	1
V&V Disposition and Status	OK
V&V Charge Time	18.499200922668

### A.2 Comments

Joint proposal with XMM.