

V&V Reference Report

L2 ASCDS Version : 8.4.5

Observation 10725 - L2 Version 2
Chandra X-Ray Center

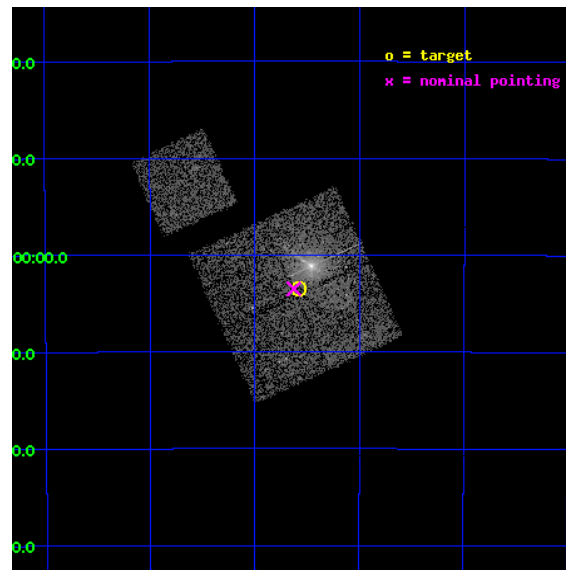
L2 Processing Date : Jun 6 2012

Contents

1	Front	2
2	OBI	3
2.1	OBI	3
2.1.1	Images	3
2.1.2	Bias	3
2.1.3	Parameters	4
2.1.4	Events	4
2.2	Compared Parameters	5
2.3	Aspect	6
2.4	Star Slots	9
2.4.1	Slot 3	9
2.4.2	Slot 4	10
2.4.3	Slot 5	11
2.4.4	Slot 6	12
2.4.5	Slot 7	13
2.5	FID Slots	14
2.5.1	Slot 0	14
2.5.2	Slot 1	15
2.5.3	Slot 2	16
A	Summary	17
A.1	Status	17
A.2	Comments	17

1 Front

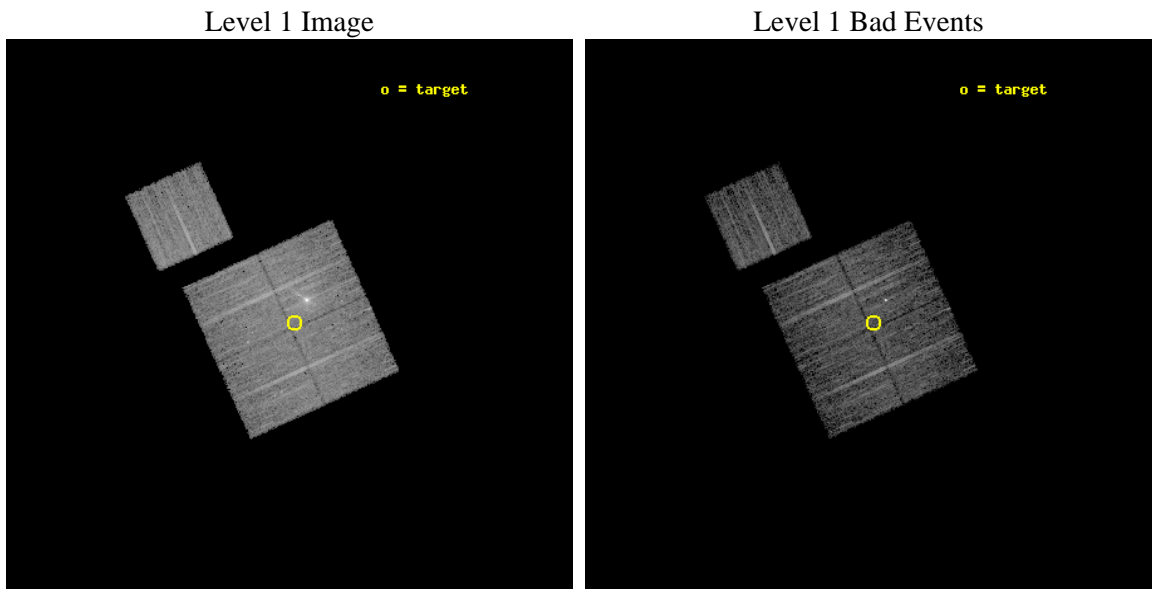
seq_num	701955	Sequence number
obs_id	10725	Observation id
title	Longterm Monitoring of the Centaurus A Jet, ULXs, and Low Mass X-ray Binary Population	Proposal title
observer	Dr. Stephen Murray	Principal investigator
object	Centaurus A	Source name
dtcycle	0	
cycle	P	events from which exps? Prim/Second/Both
ra_targ	201.395629	Observer's specified target RA [deg]
dec_targ	-43.057443	Observer's specified target Dec [deg]
ra_nom	201.4065668069	Nominal RA [deg]
dec_nom	-43.058356467583	Nominal Dec [deg]
roll_nom	335.56338331169	Nominal Roll [deg]
revision	2	Processing version of data
ontime	5040.6000387669	Sum of GTIs [s]
livetime	4974.7408884246	Livetime [s]
ontime0	5040.6000387669	Sum of GTIs [s]
ontime1	5040.6000387669	Sum of GTIs [s]
ontime2	5040.6000387669	Sum of GTIs [s]
ontime3	5040.6000387669	Sum of GTIs [s]
ontime6	5040.6000387669	Sum of GTIs [s]
l2events	31924	Number of level 2 events



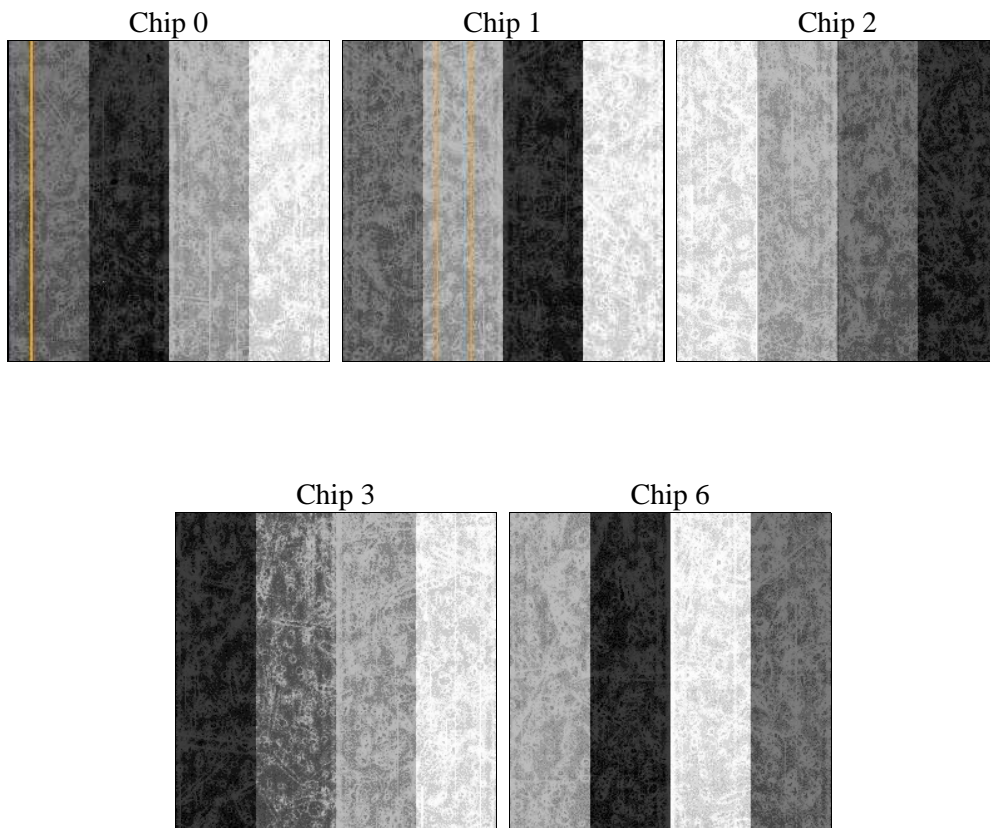
2 OBI

2.1 OBI

2.1.1 Images



2.1.2 Bias



2.1.3 Parameters

obi_num	0	Obi number	sched_exp_time	5000.000000	[s] Scheduled observation exposure time
ascdsver	8.4.5	Processing system revision	ontime	5040.6000387669	Sum of GTIs [s]
caldsver	4.4.10	 	ontime0	5040.6000387669	Sum of GTIs [s]
date	2012-06-06T03:20:05	Date and time of file creation	ontime1	5040.6000387669	Sum of GTIs [s]
revision	2	Processing version of data	ontime2	5040.6000387669	Sum of GTIs [s]
			ontime3	5040.6000387669	Sum of GTIs [s]
			ontime6	5040.6000387669	Sum of GTIs [s]
			l1events	235310	Number of level 1 events

2.1.4 Events

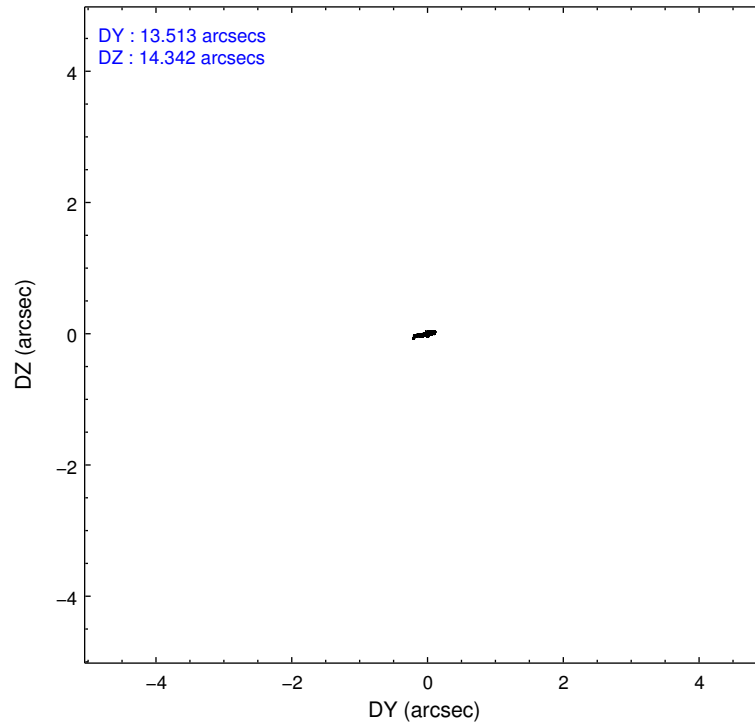
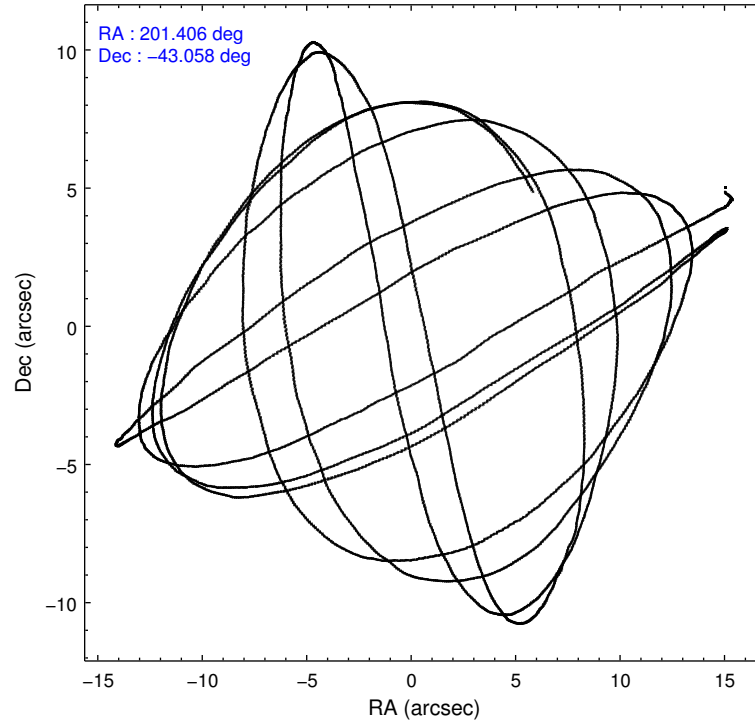
	ccd 0	ccd 1	ccd 2	ccd 3	ccd 6
level 1 events	43124	43384	47744	55662	45396
rejected events	37873	36951	42443	41121	40583
rejected %	87%	85%	88%	73%	89%

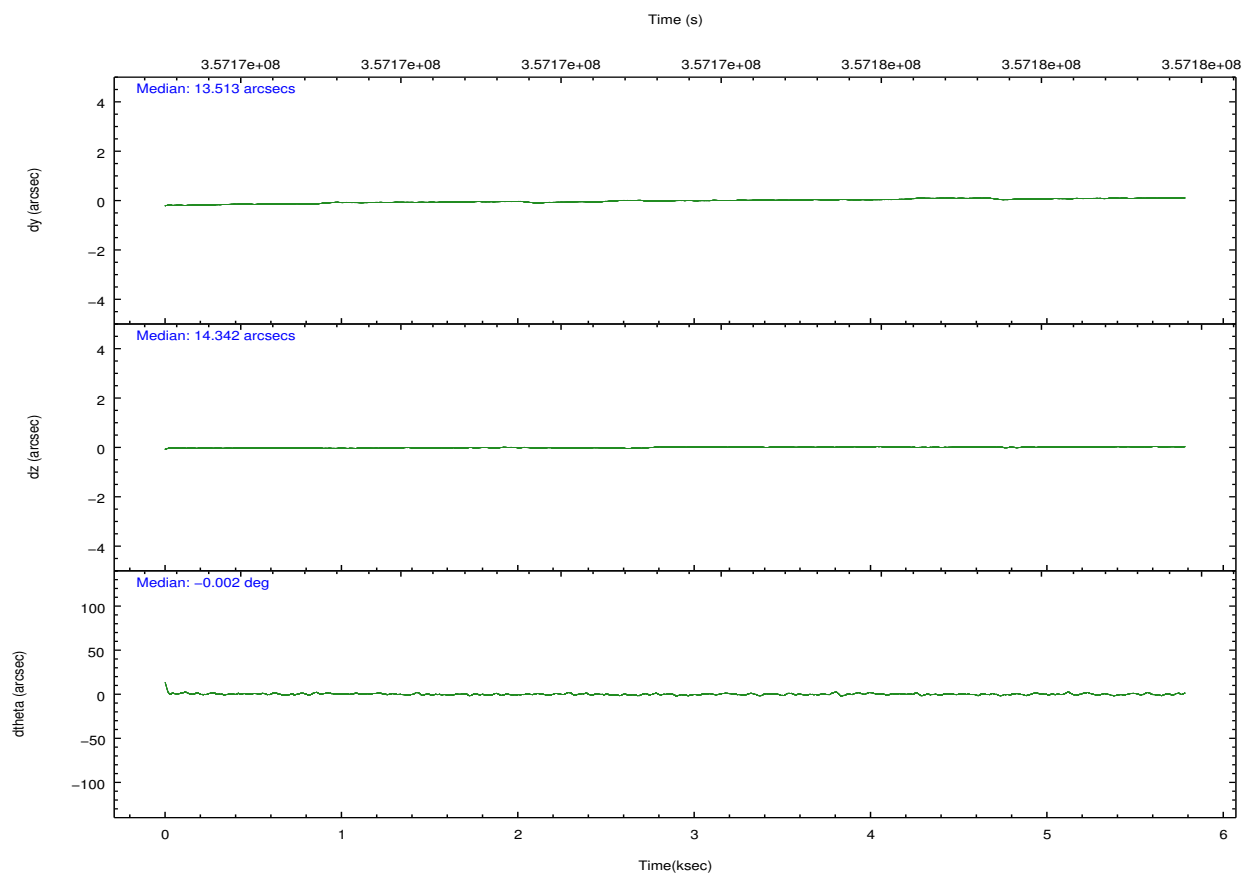
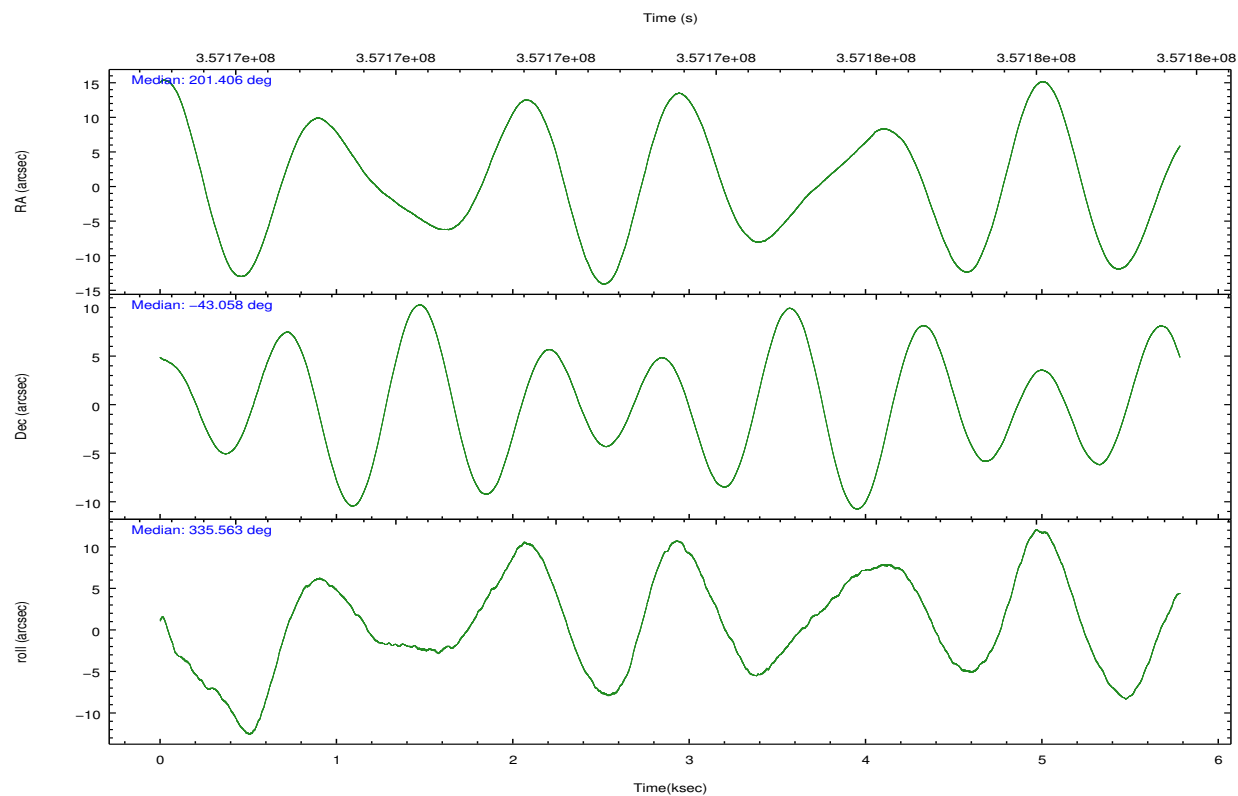
	ccd 0	ccd 1	ccd 2	ccd 3	ccd 6
grade 0 events	2152	2853	2252	8475	1916
	4%	6%	4%	15%	4%
grade 1 events	29	35	29	287	25
	0%	0%	0%	0%	0%
grade 2 events	1193	1306	1228	2325	1036
	2%	3%	2%	4%	2%
grade 3 events	505	559	488	943	467
	1%	1%	1%	1%	1%
grade 4 events	483	588	484	978	462
	1%	1%	1%	1%	1%
grade 5 events	1575	1815	1579	2136	1834
	3%	4%	3%	3%	4%
grade 6 events	919	1130	852	1835	936
	2%	2%	1%	3%	2%
grade 7 events	36268	35098	40832	38683	38720
	84%	80%	85%	69%	85%

2.2 Compared Parameters

Parameter	Planned	Actual	Parameter	Planned	Actual
Instrument	ACIS	ACIS	Obspar format version number	7	7
Detector	ACIS-01236	ACIS-01236	Obspar file type	PREDICTED	ACTUAL
Grating	NONE	NONE	Obspar update status	NONE	UPDATED
Data mode	FAINT	FAINT	Number of optional ACIS chips dropped	0	0
Observation mode	POINTING	POINTING	On-chip summing requested	N	N
[deg] Pointing RA	201.369165	201.4065668069045	Subarray requested	NONE	NONE
[deg] Pointing Dec	-43.061213	-43.05835646758319	Alternating exposures requested	N	N
[deg] Pointing Roll	335.329152	335.5633833116935	[s] Primary exposure time	0.000000	3.1
[mm] SIM focus pos	-0.782348	-0.7809083437167272			
[mm] SIM defocus	0	0.001439871863259334			
[mm] SIM translation stage pos	-233.592463	-233.5874344608287			
[mm] SIM translation stage offset	0	-0.005018542100998502			
[s] Observation start time (MET)	357171599.184000	357170225.34474			
Observation start date	2009-04-26T22:18:53	2009-04-26T21:57:05			
[s] Observation end time (MET)	357176599.184000	357178074.28263			
Observation end date	2009-04-26T23:42:13	2009-04-27T00:07:54			
Read mode	TIMED	TIMED			

2.3 Aspect



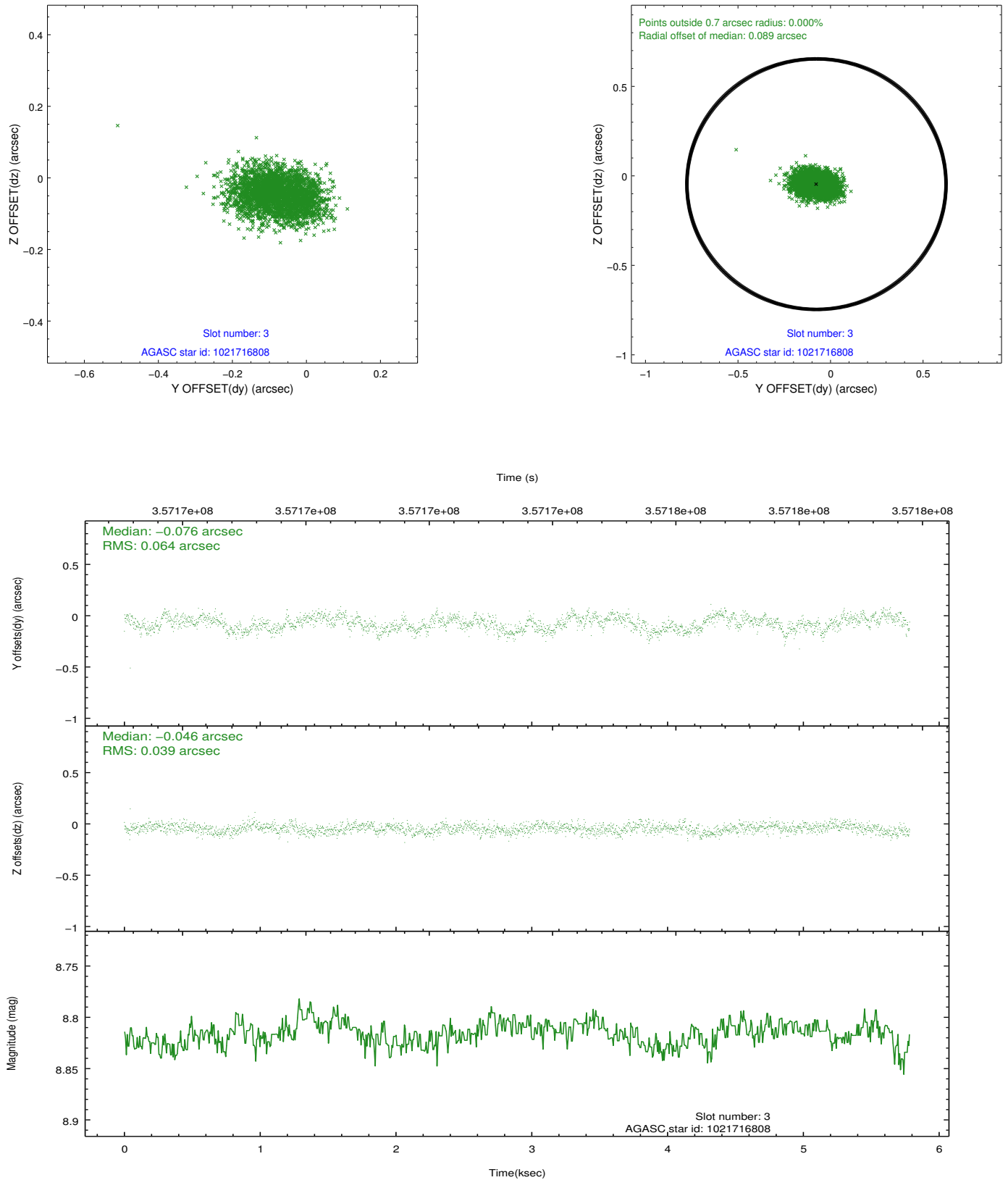


Slot Statistics

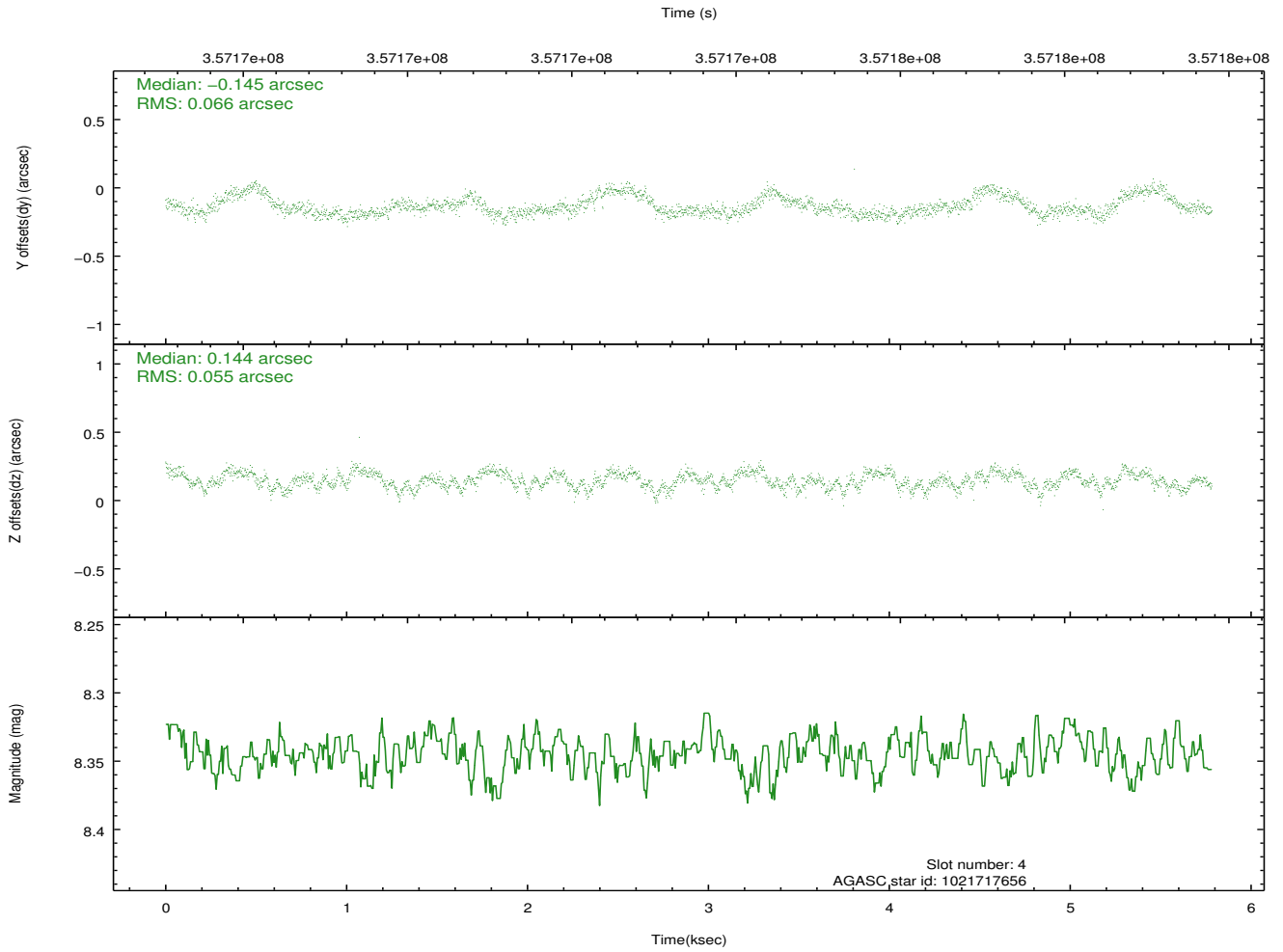
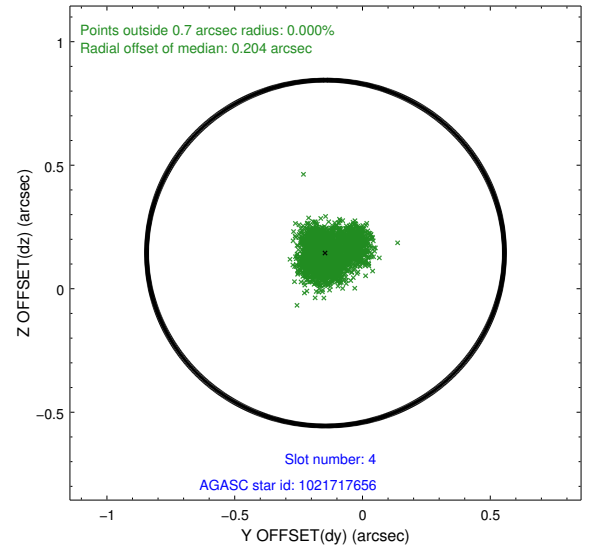
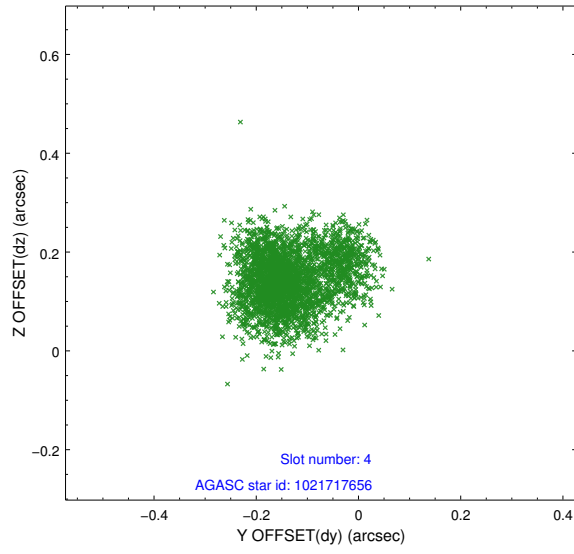
slot	status	id	mag	n_pts	med_dy	med_dz	dr1	dr2	ra	dec	mean_y	mean_z
0	FID	ACIS-I-1	7.05	1411	-0.047	0.075	0.010	0.015	0.000000	0.000000	925.96	-837.84
1	FID	ACIS-I-2	6.96	1411	-0.157	-0.093	0.007	0.011	0.000000	0.000000	-767.67	-844.97
2	FID	ACIS-I-4	6.96	1411	0.106	0.085	0.006	0.009	0.000000	0.000000	2145.52	1061.45
3	GUIDE	1021716808	8.82	2822	-0.076	-0.046	0.081	0.128	200.901189	-42.531395	-1922.45	1211.59
4	GUIDE	1021717656	8.34	2820	-0.145	0.144	0.092	0.150	201.139642	-43.082878	-515.72	-323.07
5	GUIDE	1021719704	7.56	2822	-0.048	0.083	0.070	0.110	200.511976	-43.050426	-2060.03	-916.62
6	GUIDE	1021721672	9.52	2818	-0.057	0.010	0.131	0.207	201.740358	-43.079729	915.45	344.34
7	GUIDE	1022235840	9.42	2811	0.317	-0.186	0.125	0.199	201.679306	-43.544276	1463.18	-1244.05

2.4 Star Slots

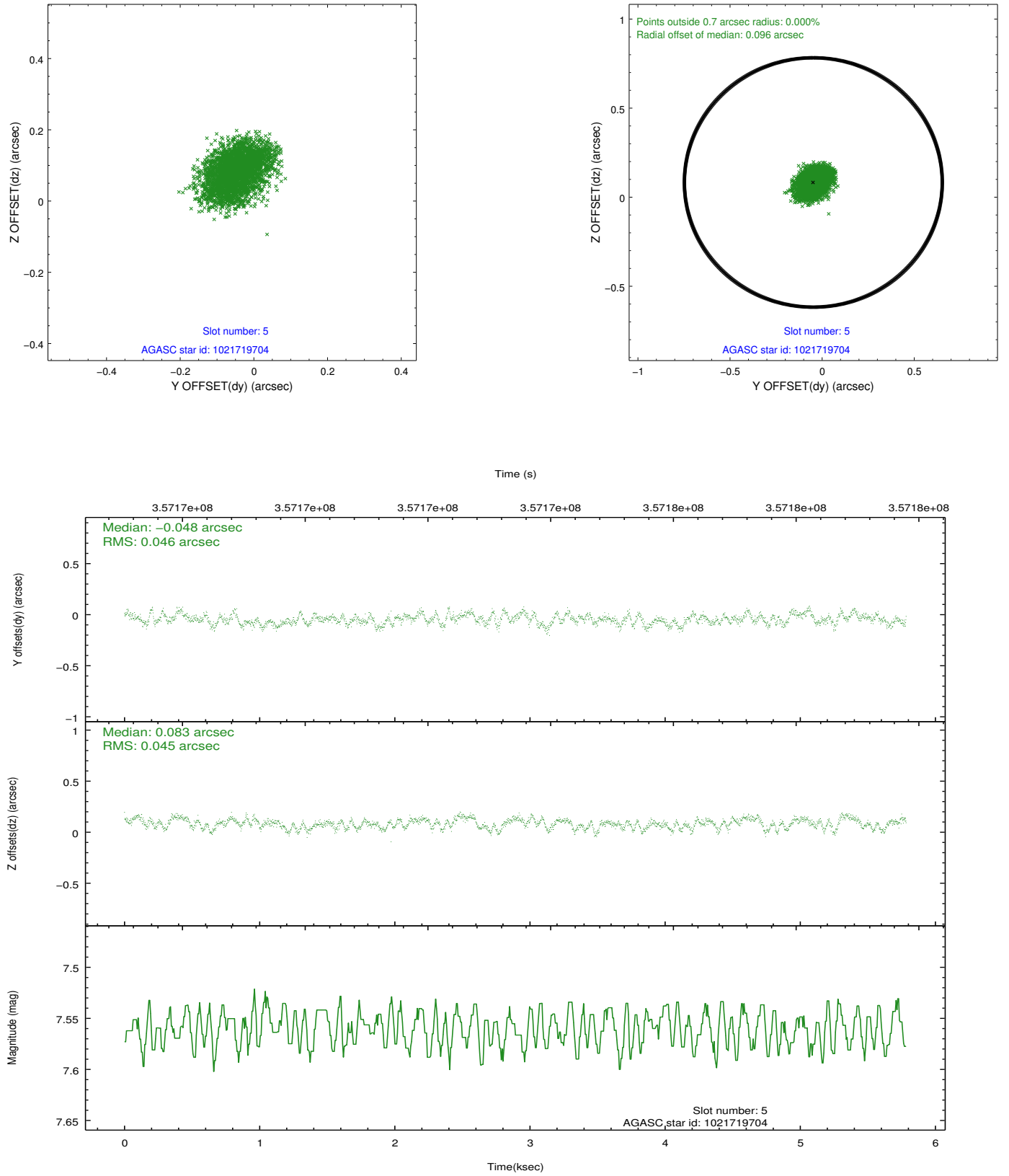
2.4.1 Slot 3



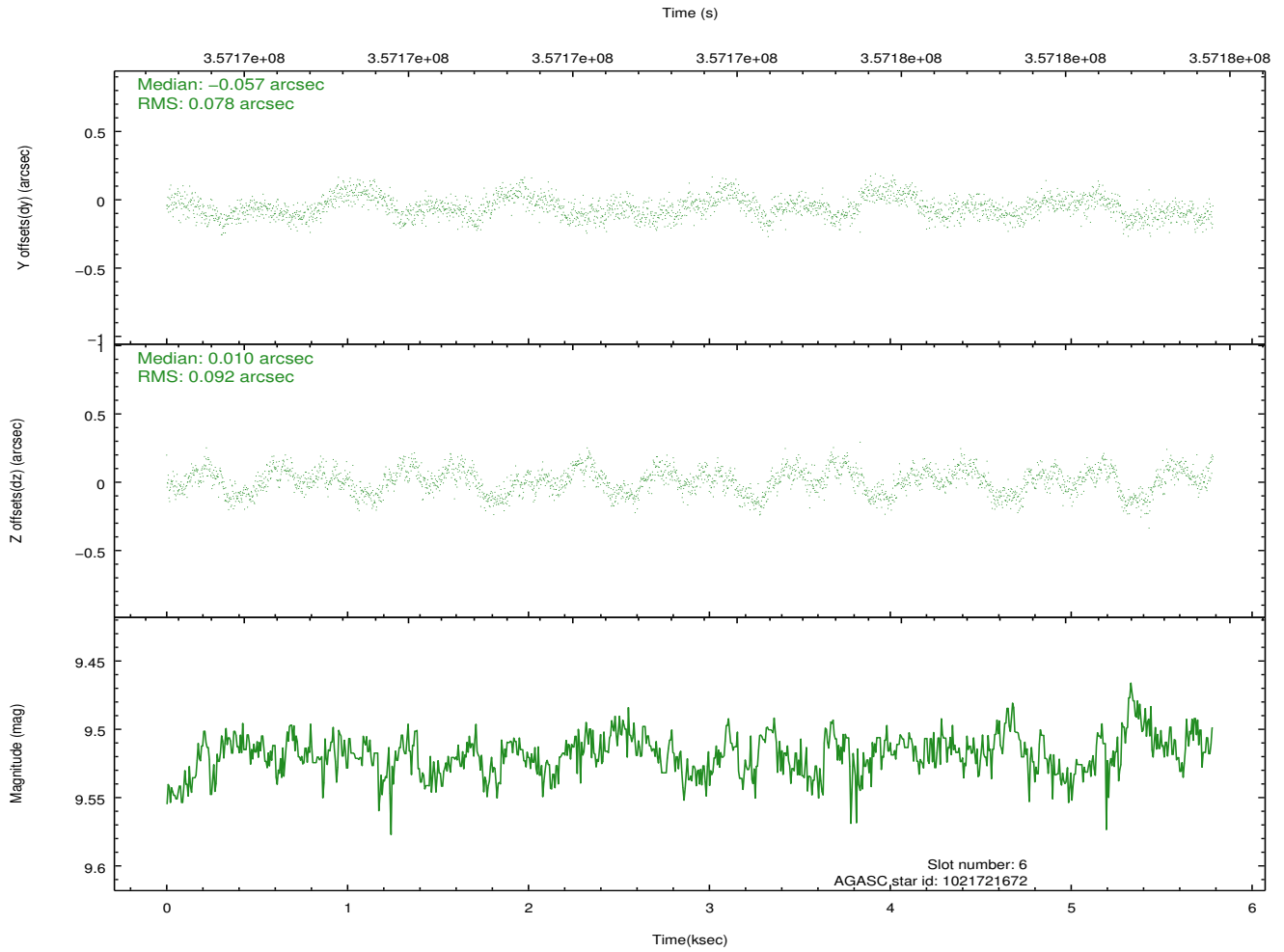
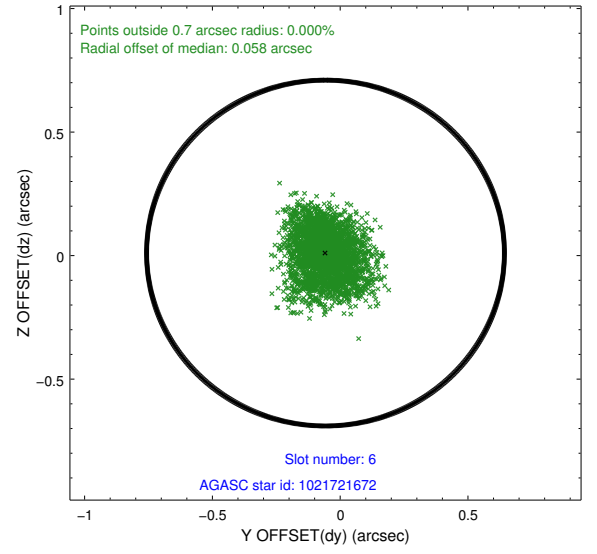
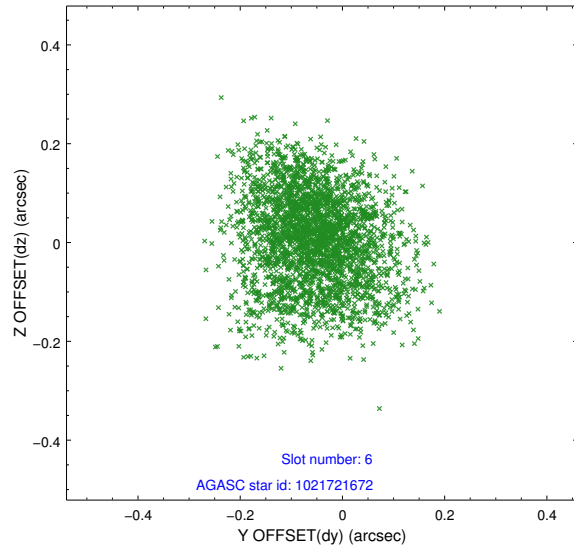
2.4.2 Slot 4



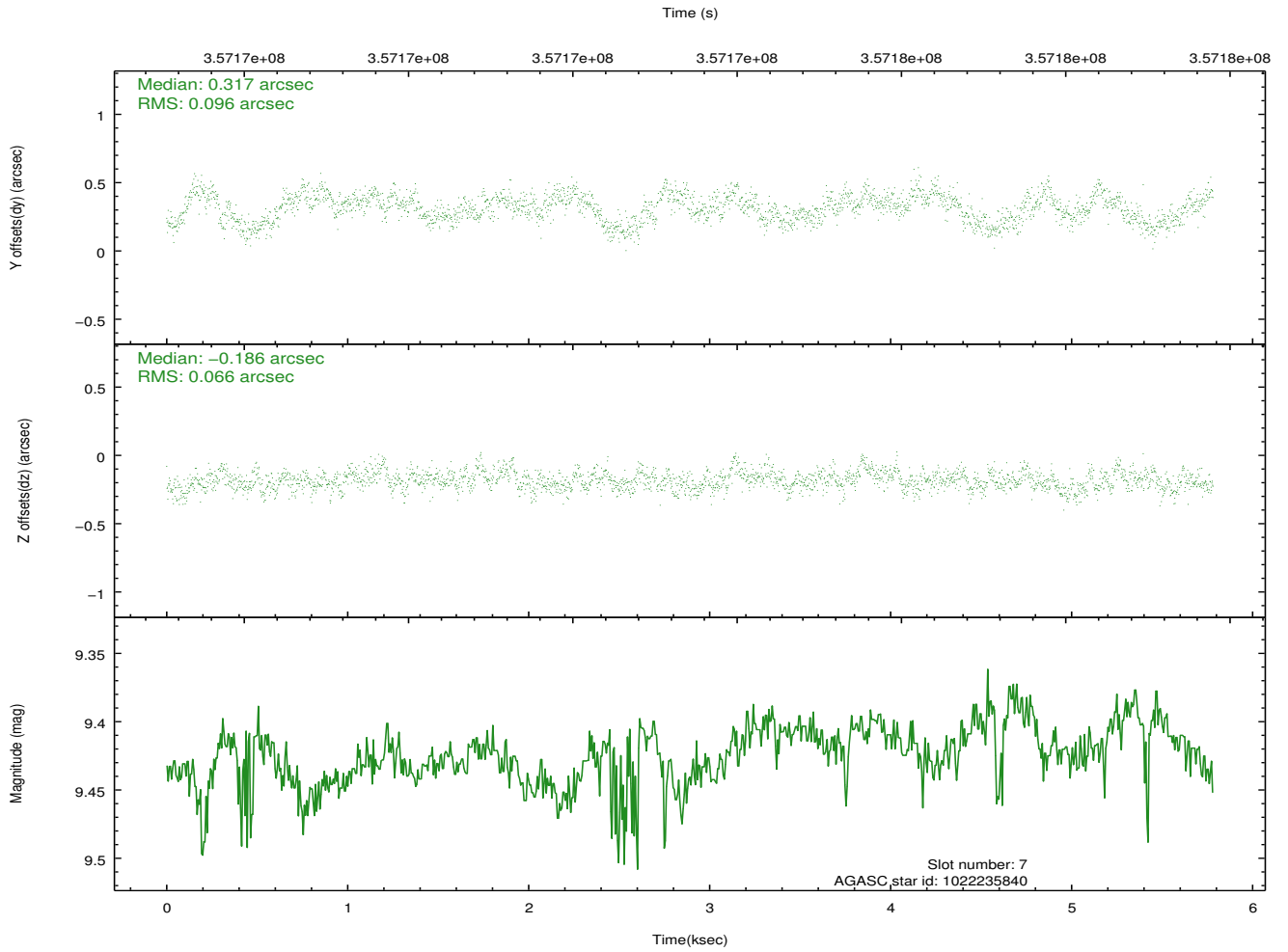
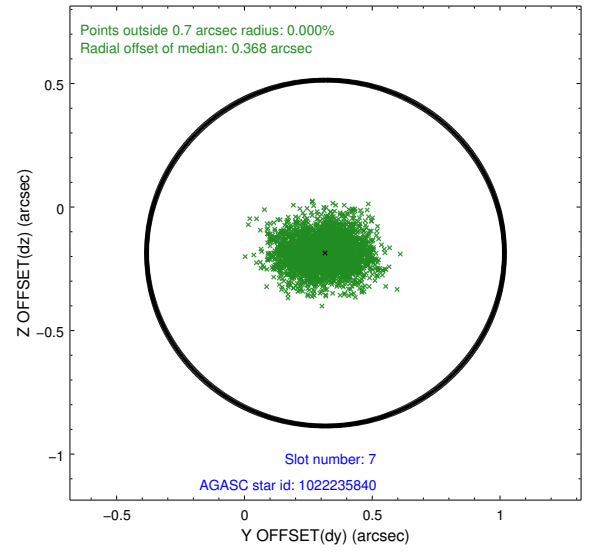
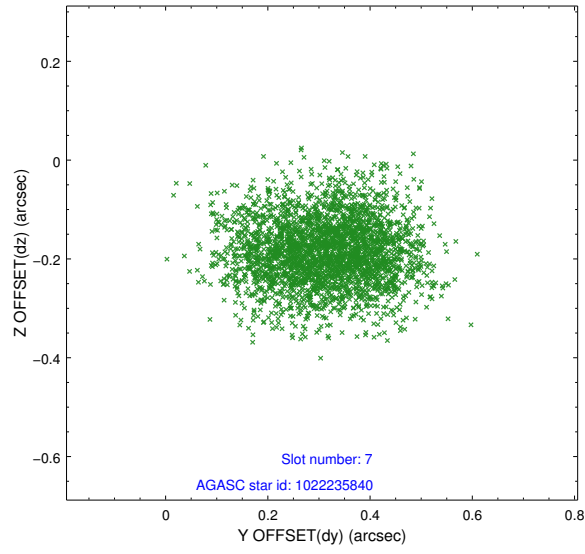
2.4.3 Slot 5



2.4.4 Slot 6

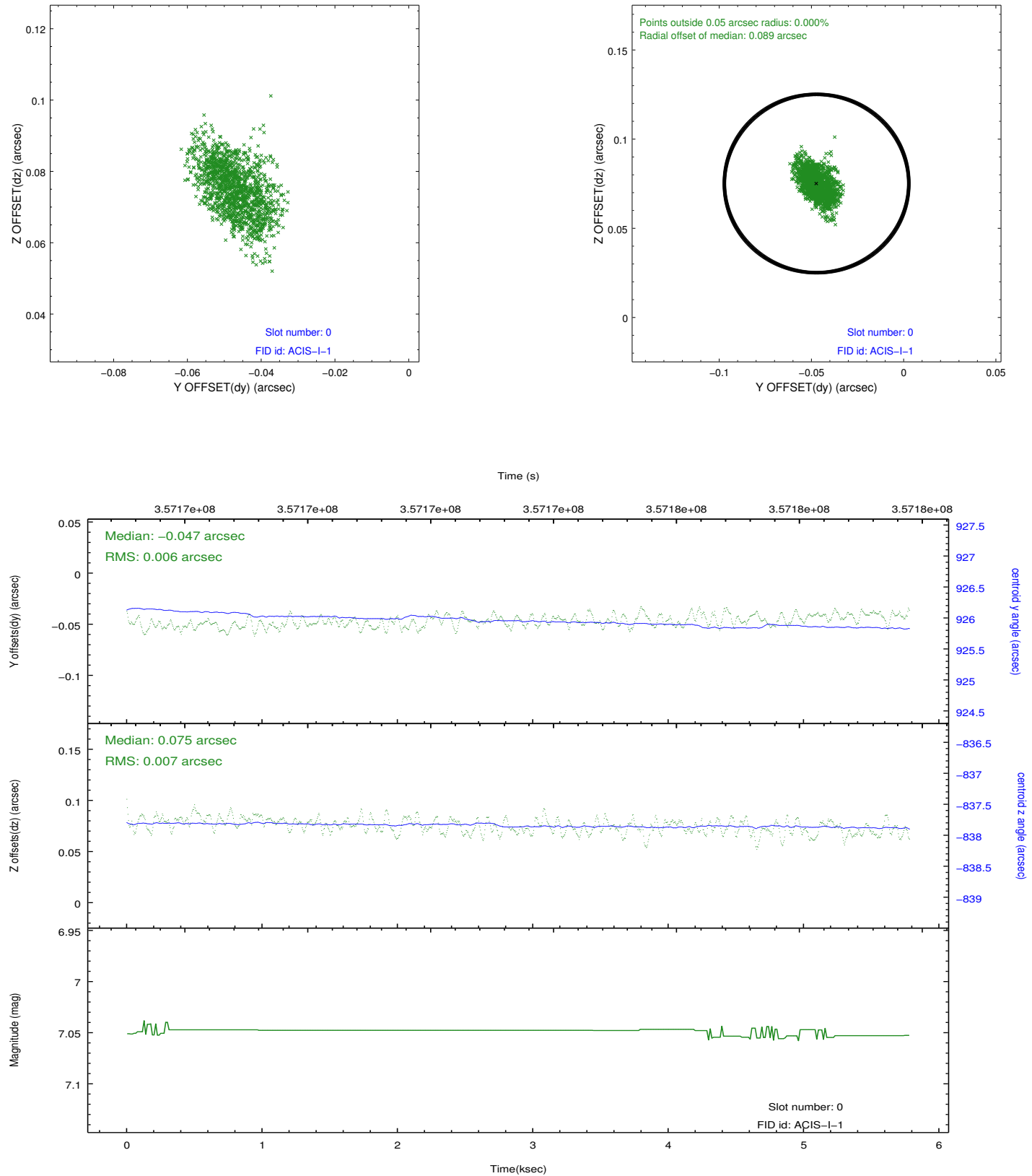


2.4.5 Slot 7

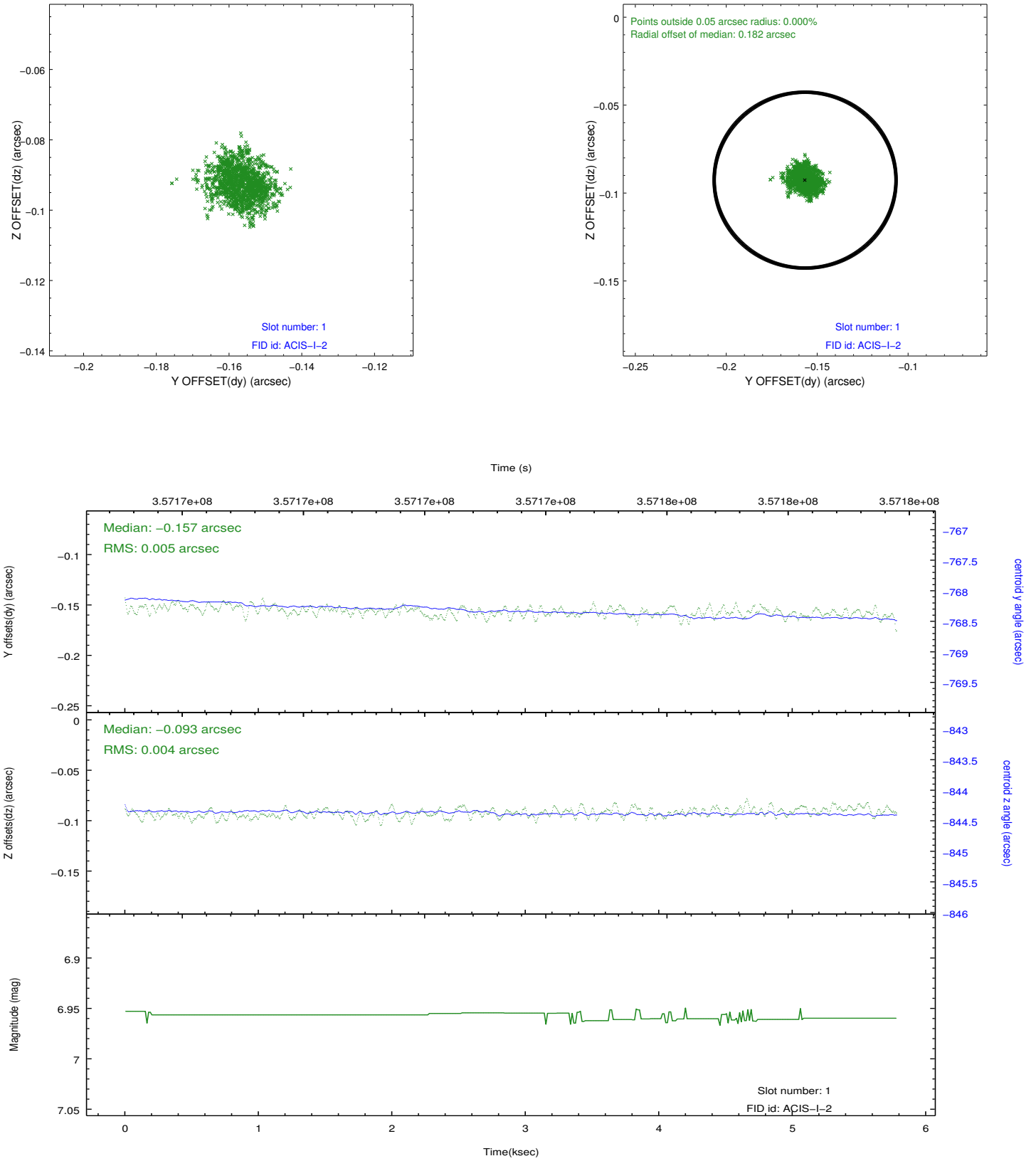


2.5 FID Slots

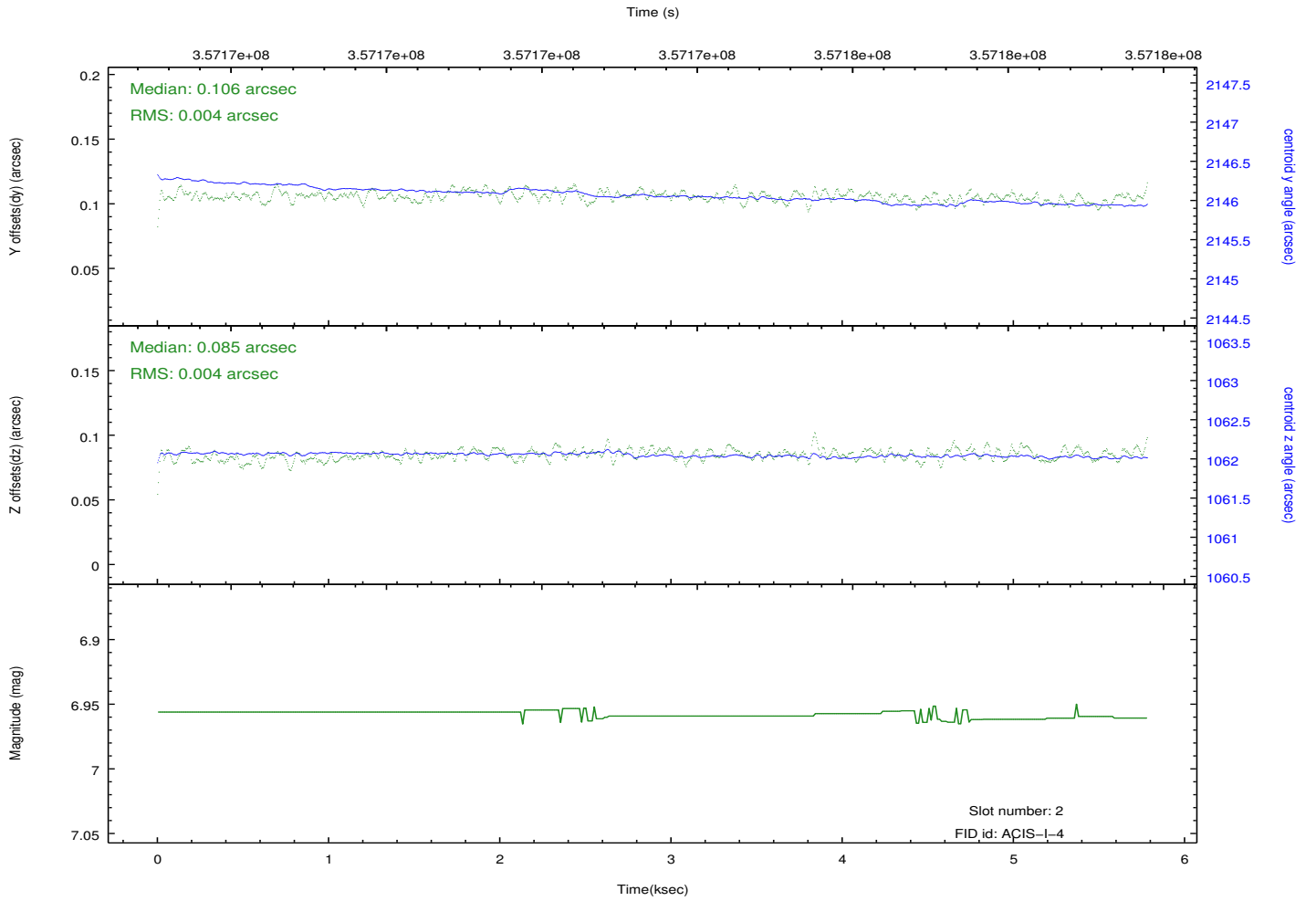
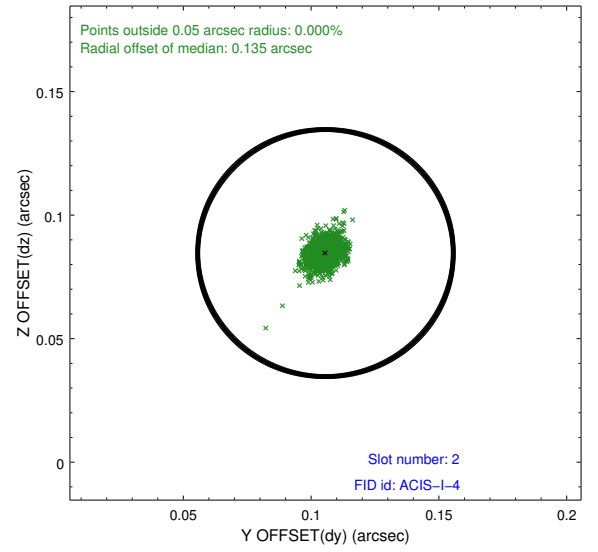
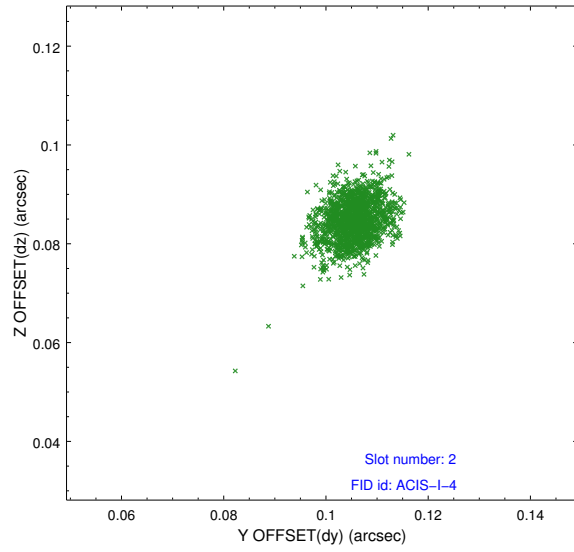
2.5.1 Slot 0



2.5.2 Slot 1



2.5.3 Slot 2



A Summary

A.1 Status

V&V Scientist	Jen Lauer
V&V Date (YYYY-MM-DD)	2012.06.08
V&V Edition	1
V&V Disposition and Status	OK
V&V Charge Time	5.04060003

A.2 Comments

Roll angle for this series of observations are not the same.