

V&V Reference Report

L2 ASCDS Version : 8.4.4

Observation 10485 - L2 Version 2
Chandra X-Ray Center

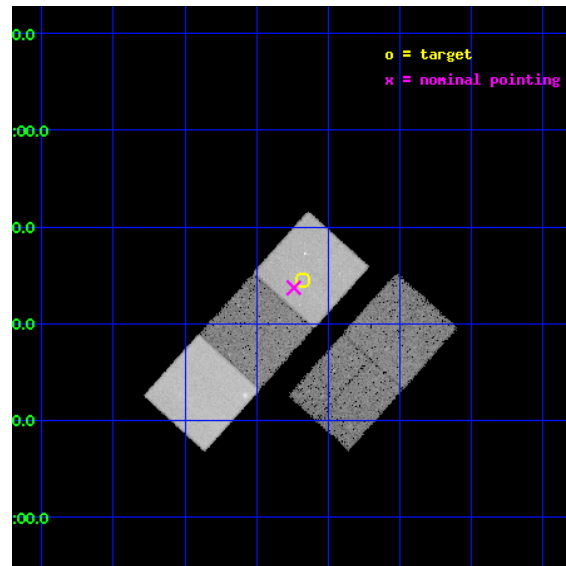
L2 Processing Date : May 24 2012

Contents

1	Front	2
2	OBI	3
2.1	OBI	3
2.1.1	Images	3
2.1.2	Bias	3
2.1.3	Parameters	4
2.1.4	Events	4
2.2	Compared Parameters	5
2.3	Aspect	6
2.4	Star Slots	9
2.4.1	Slot 3	9
2.4.2	Slot 4	10
2.4.3	Slot 5	11
2.4.4	Slot 6	12
2.4.5	Slot 7	13
2.5	FID Slots	14
2.5.1	Slot 0	14
2.5.2	Slot 1	15
2.5.3	Slot 2	16
A	Summary	17
A.1	Status	17
A.2	Comments	17

1 Front

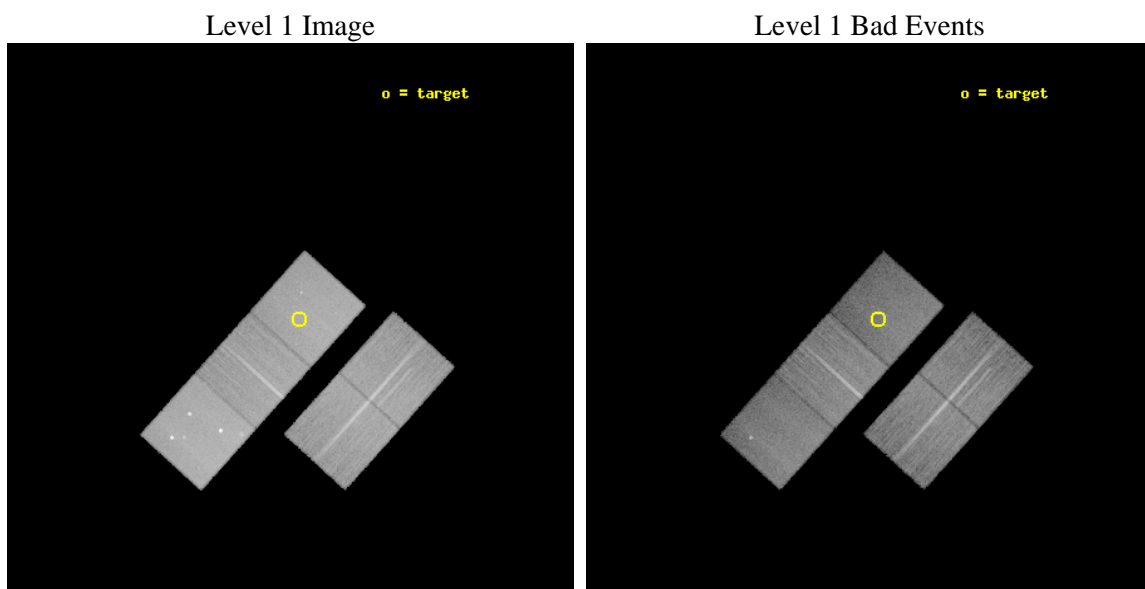
seq_num	800840	Sequence number
obs_id	10485	Observation id
title	Deciphering Cluster Observables: Tracing the Baryons in Clusters of Galaxies	Proposal title
observer	Dr. Amalia Hicks	Principal investigator
object	RCS0222+0144	Source name
dtcycle	0	
cycle	P	events from which exps? Prim/Second/Both
ra_targ	35.669167	Observer's specified target RA [deg]
dec_targ	1.742222	Observer's specified target Dec [deg]
ra_nom	35.684927404044	Nominal RA [deg]
dec_nom	1.7284668572285	Nominal Dec [deg]
roll_nom	312.01368176923	Nominal Roll [deg]
revision	2	Processing version of data
ontime	23643.700181842	Sum of GTIs [s]
livetime	23334.777832727	Livetime [s]
ontime2	23631.136370003	Sum of GTIs [s]
ontime3	23640.559191525	Sum of GTIs [s]
ontime5	23643.700181842	Sum of GTIs [s]
ontime6	23643.700181842	Sum of GTIs [s]
ontime7	23643.700181842	Sum of GTIs [s]
l2events	285433	Number of level 2 events



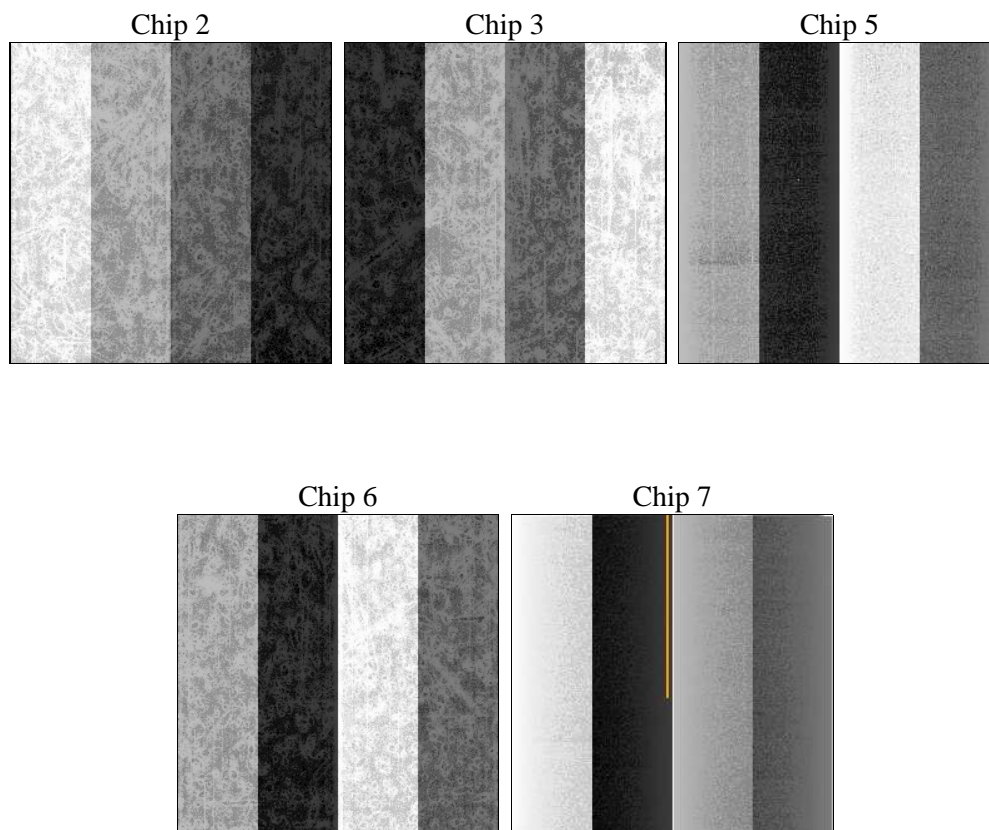
2 OBI

2.1 OBI

2.1.1 Images



2.1.2 Bias



2.1.3 Parameters

obi_num	0	Obi number	sched_exp_time	23500.000000	[s] Scheduled observation exposure time
ascdsver	8.4.4	Processing system revision	ontime	23643.700181842	Sum of GTIs [s]
caldbver	4.4.9	 	ontime2	23631.136370003	Sum of GTIs [s]
date	2012-05-24T16:07:20	Date and time of file creation	ontime3	23640.559191525	Sum of GTIs [s]
revision	2	Processing version of data	ontime5	23643.700181842	Sum of GTIs [s]
			ontime6	23643.700181842	Sum of GTIs [s]
			ontime7	23643.700181842	Sum of GTIs [s]
			l1events	1143896	Number of level 1 events

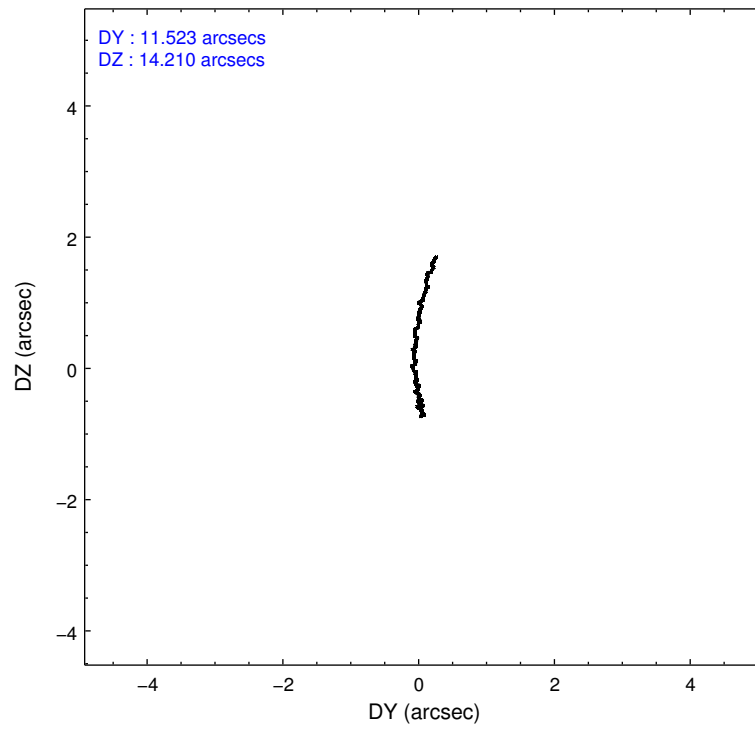
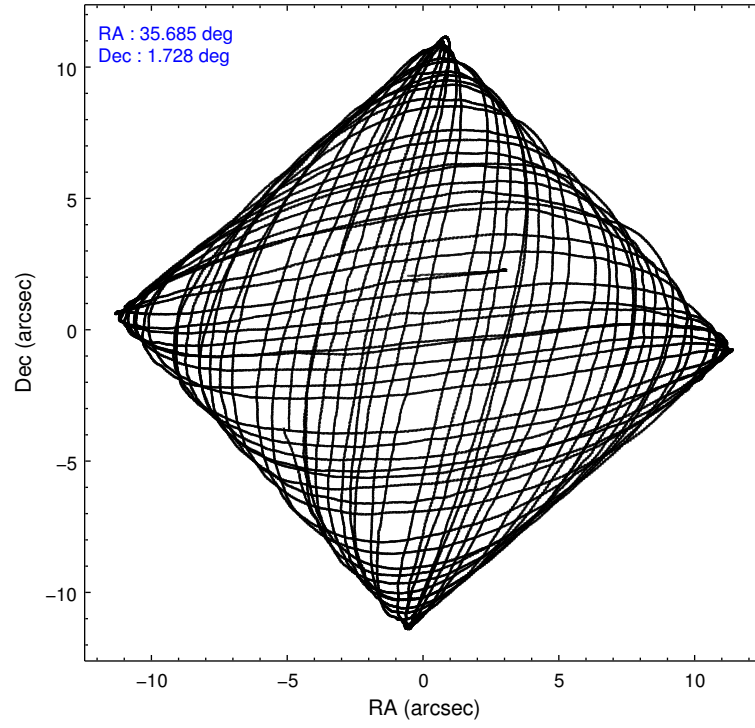
2.1.4 Events

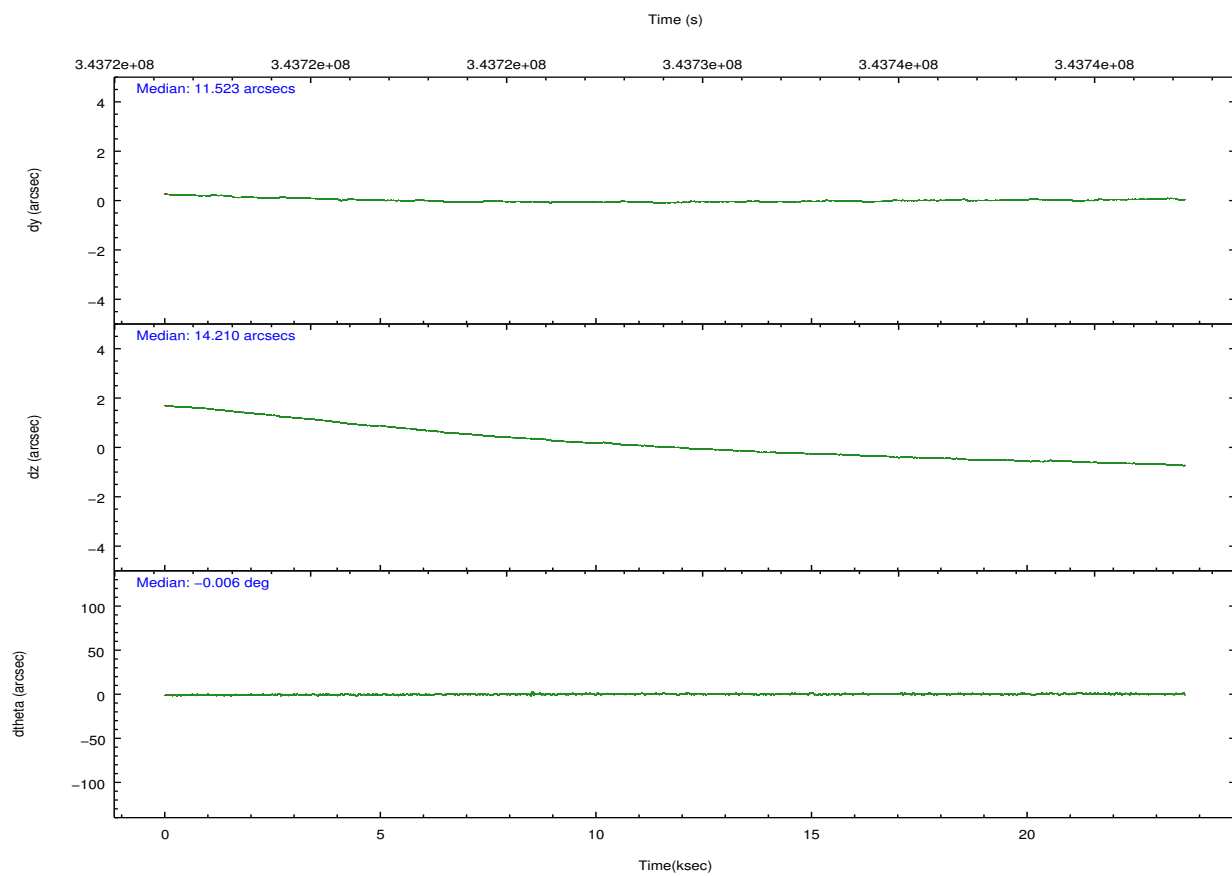
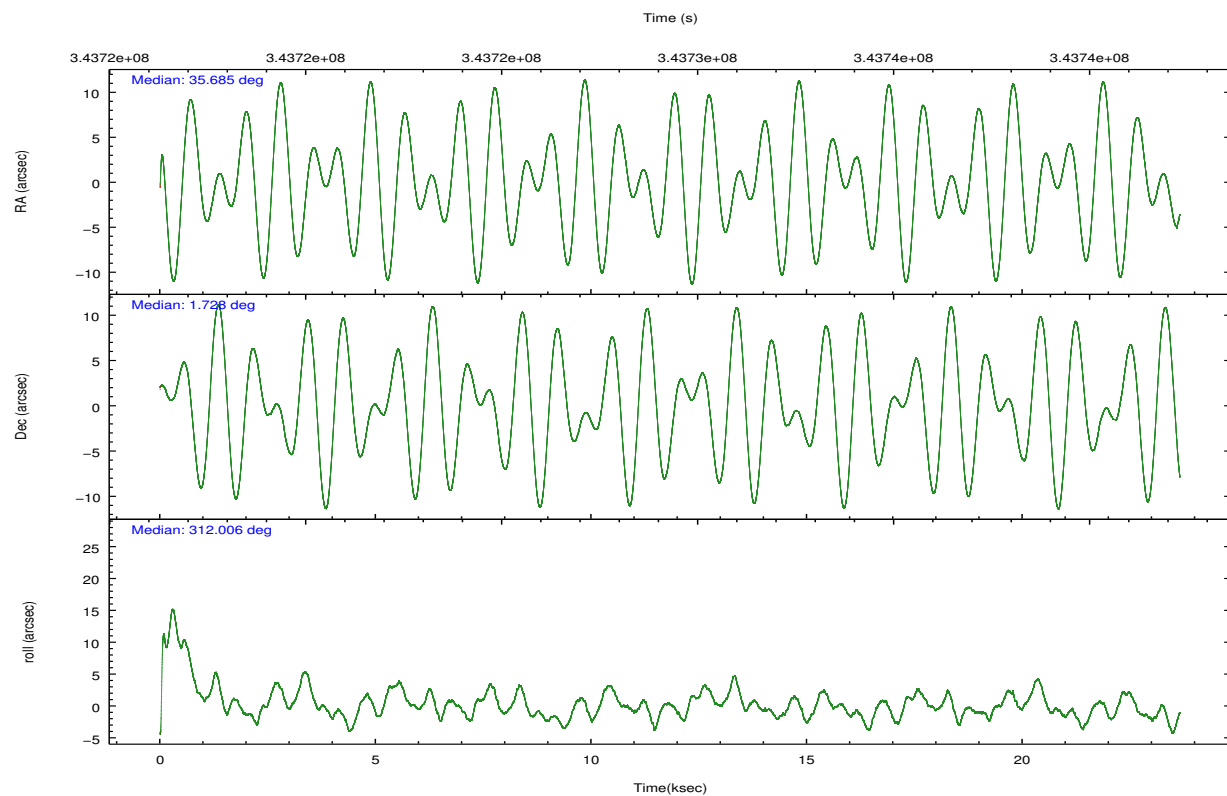
	ccd 2	ccd 3	ccd 5	ccd 6	ccd 7		ccd 2	ccd 3	ccd 5	ccd 6	ccd 7
level 1 events	206105	197514	296438	208863	234976	grade 0 events	7050	6632	19958	7357	10159
rejected events	186689	178905	148483	187801	130020		3%	3%	6%	3%	4%
rejected %	90%	90%	50%	89%	55%	grade 1 events	127	121	533	84	317
							0%	0%	0%	0%	0%
						grade 2 events	4610	4261	44291	4852	22008
							2%	2%	14%	2%	9%
						grade 3 events	2190	2241	6278	2396	9964
							1%	1%	2%	1%	4%
						grade 4 events	2275	2110	5891	2303	9806
							1%	1%	1%	1%	4%
						grade 5 events	6763	8131	22636	8515	24889
							3%	4%	7%	4%	10%
						grade 6 events	3753	3844	74962	4634	55399
							1%	1%	25%	2%	23%
						grade 7 events	179337	170174	121889	178722	102434
							87%	86%	41%	85%	43%

2.2 Compared Parameters

Parameter	Planned	Actual	Parameter	Planned	Actual
Instrument	ACIS	ACIS	Obspar format version number	7	7
Detector	ACIS-23567	ACIS-23567	Obspar file type	PREDICTED	ACTUAL
Grating	NONE	NONE	Obspar update status	NONE	UPDATED
Data mode	VFAINT	VFAINT	CCD I0 on	N	N
Observation mode	POINTING	POINTING	CCD I1 on	N	N
[deg] Pointing RA	35.658822	35.68492740404434	CCD I2 on	O1	Y
[deg] Pointing Dec	1.736534	1.728466857228476	CCD I3 on	O2	Y
[deg] Pointing Roll	311.857850	312.0136817692303	CCD S0 on	N	N
[mm] SIM focus pos	-0.684267	-0.6828225247311905	CCD S1 on	O4	Y
[mm] SIM defocus	0	0.001444936568705701	CCD S2 on	O3	Y
[mm] SIM translation stage pos	-190.132523	-190.1400660498719	CCD S3 on	Y	Y
[mm] SIM translation stage offset	0	0.00754346686406393	CCD S4 on	N	N
[s] Observation start time (MET)	343717634.184000	343716372.95273	CCD S5 on	N	N
Observation start date	2008-11-22T05:06:09	2008-11-22T04:46:12	Number of optional ACIS chips dropped	0	0
[s] Observation end time (MET)	343741134.184000	343742117.3665	On-chip summing requested	N	N
Observation end date	2008-11-22T11:37:49	2008-11-22T11:55:17	Subarray requested	NONE	NONE
Read mode	TIMED	TIMED	Alternating exposures requested	N	N
			[s] Primary exposure time	0.000000	3.1

2.3 Aspect



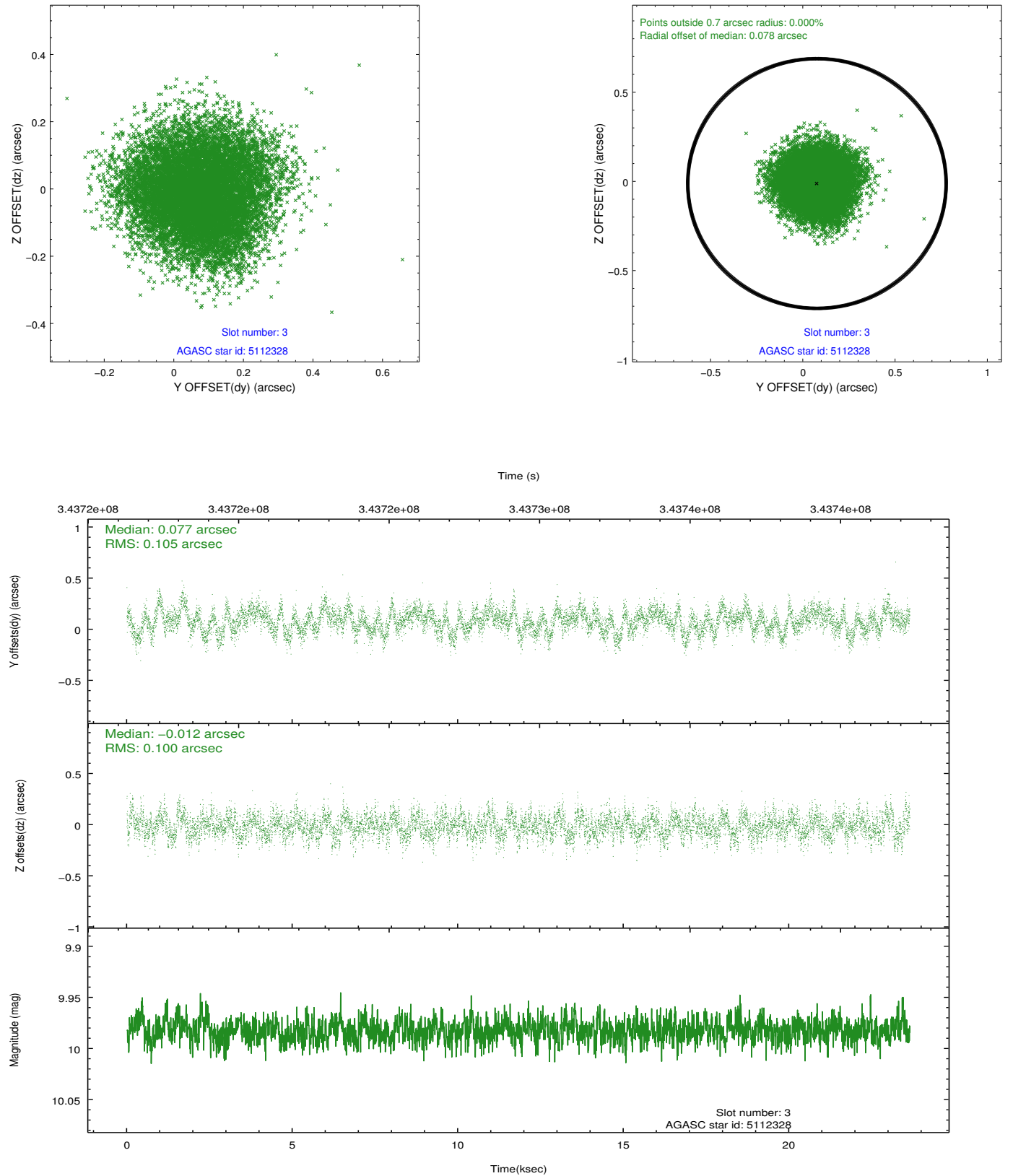


Slot Statistics

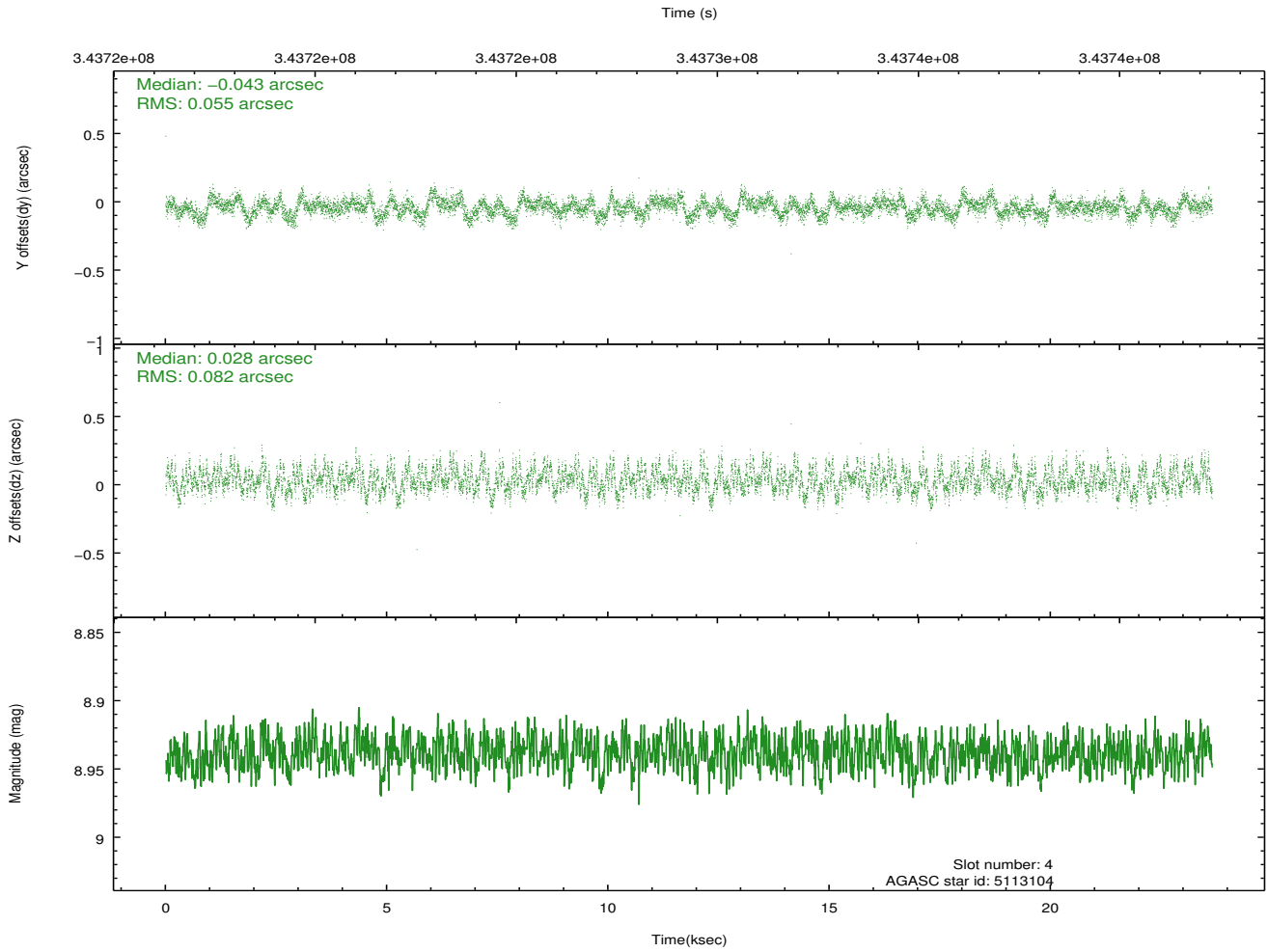
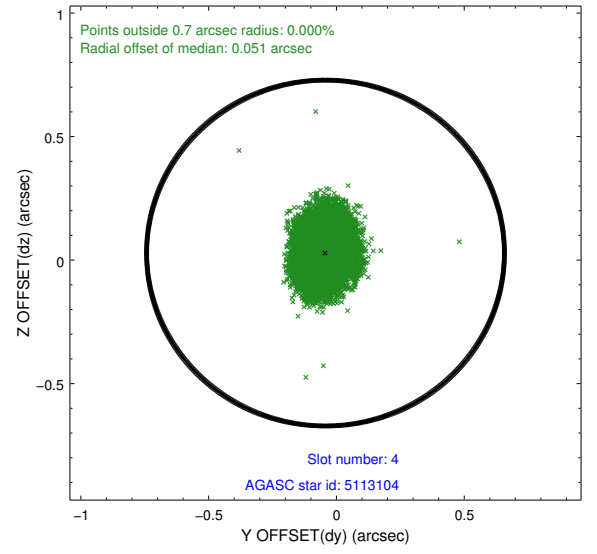
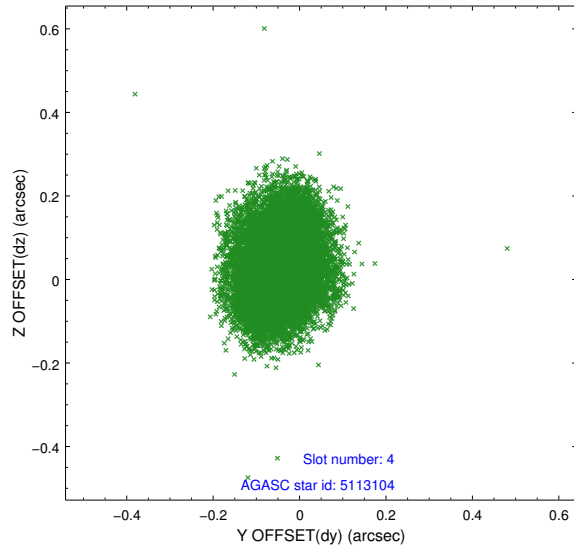
slot	status	id	mag	n_pts	med_dy	med_dz	dr1	dr2	ra	dec	mean_y	mean_z
0	FID	ACIS-S-1	6.96	5769	-0.010	0.003	0.015	0.076	0.000000	0.000000	931.62	-1731.39
1	FID	ACIS-S-4	6.97	5769	0.056	-0.010	0.013	0.021	0.000000	0.000000	2149.15	172.65
2	FID	ACIS-S-6	7.10	5769	-0.068	0.020	0.014	0.060	0.000000	0.000000	397.65	810.18
3	GUIDE	5112328	9.98	11524	0.077	-0.012	0.157	0.245	35.267094	1.623835	-637.51	-1320.09
4	GUIDE	5113104	8.94	11524	-0.043	0.028	0.107	0.168	35.108626	1.589275	-924.91	-1827.23
5	GUIDE	5114592	9.68	11448	0.081	0.004	0.153	0.248	35.191954	1.402754	-225.64	-2053.08
6	GUIDE	5118600	8.26	11532	-0.015	0.104	0.065	0.108	35.568222	2.453312	-2139.29	1479.47
7	GUIDE	5116944	10.18	11509	-0.106	-0.122	0.145	0.254	35.813722	1.807125	183.05	584.12

2.4 Star Slots

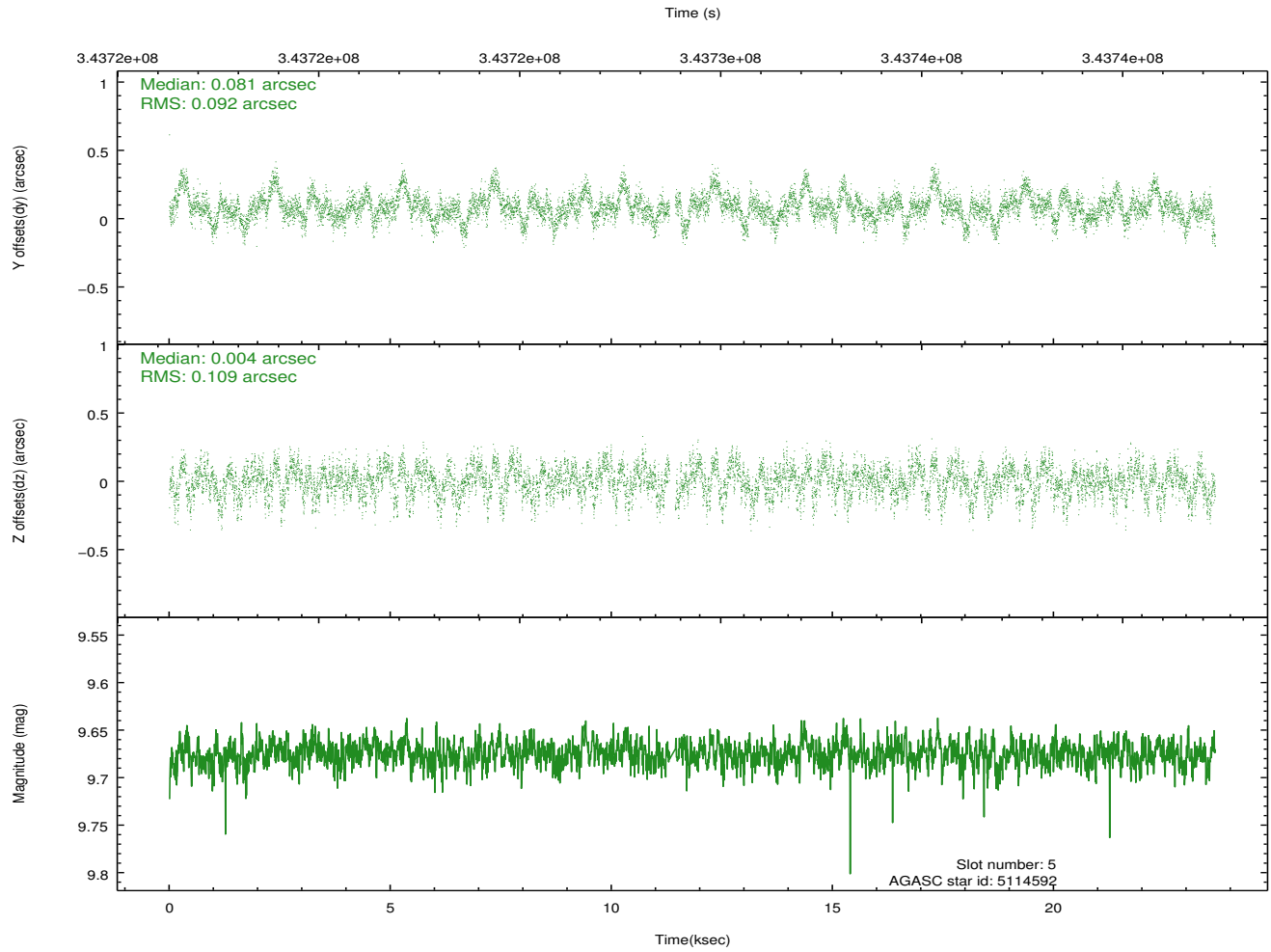
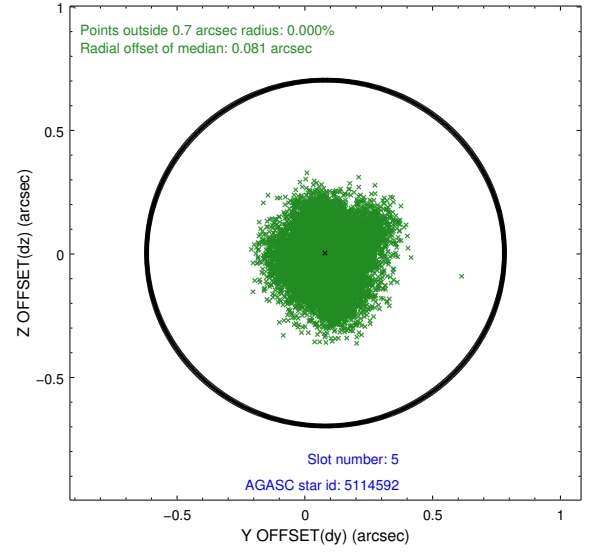
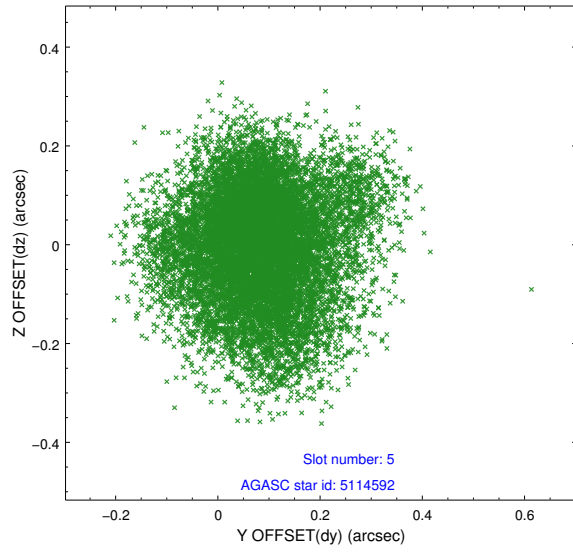
2.4.1 Slot 3



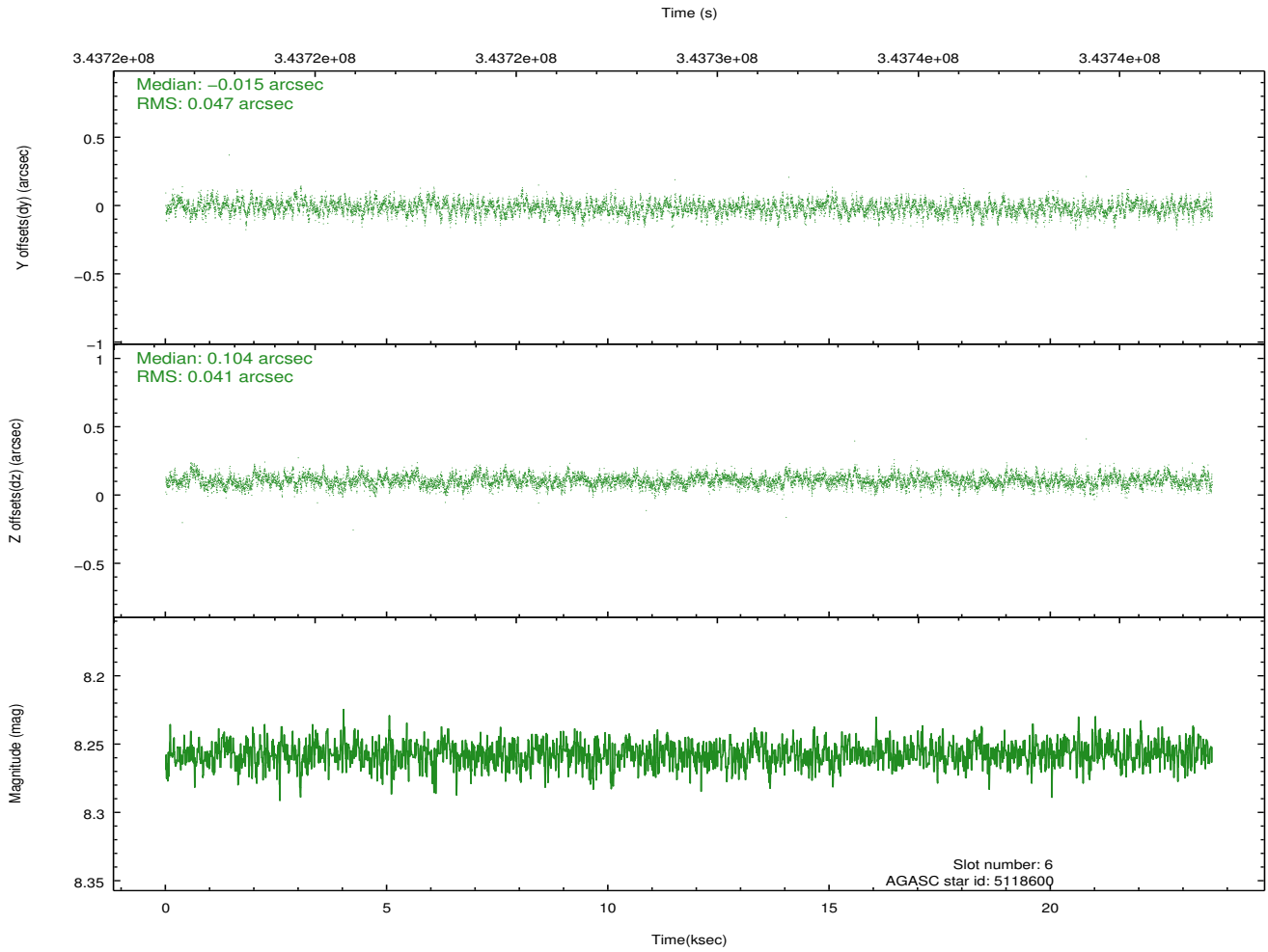
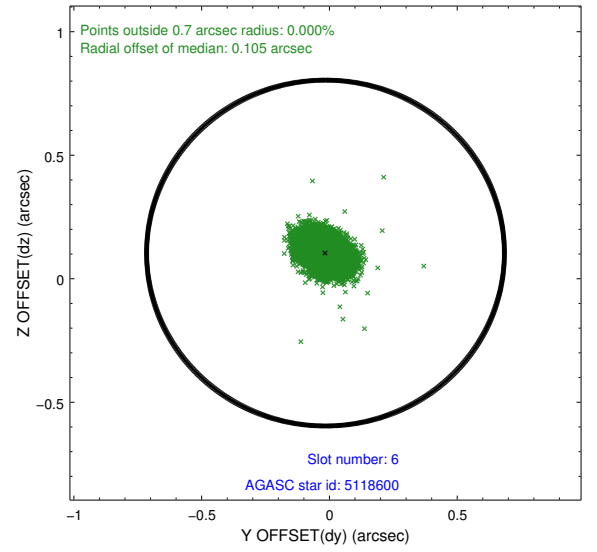
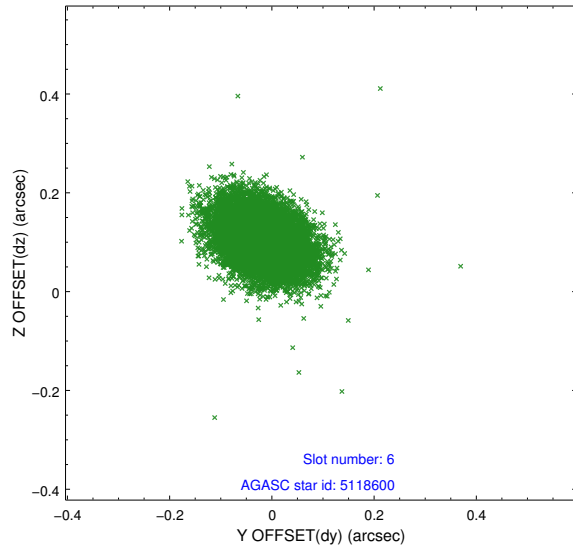
2.4.2 Slot 4



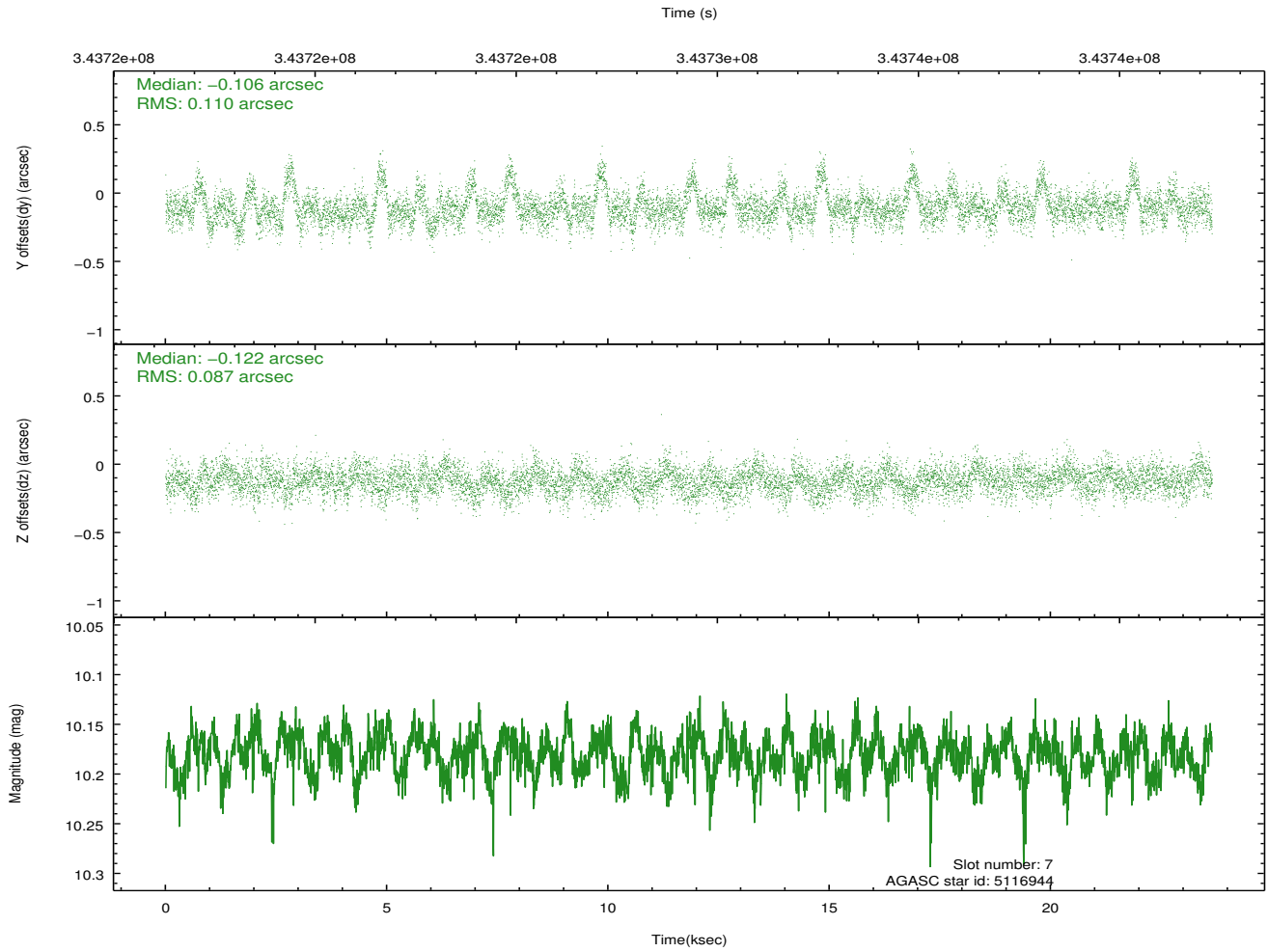
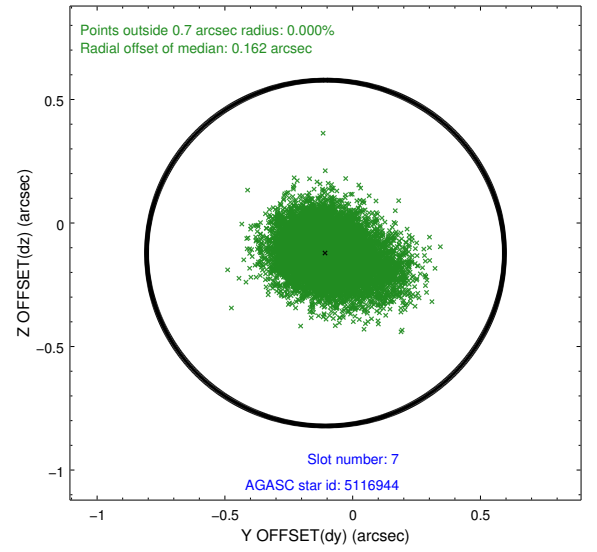
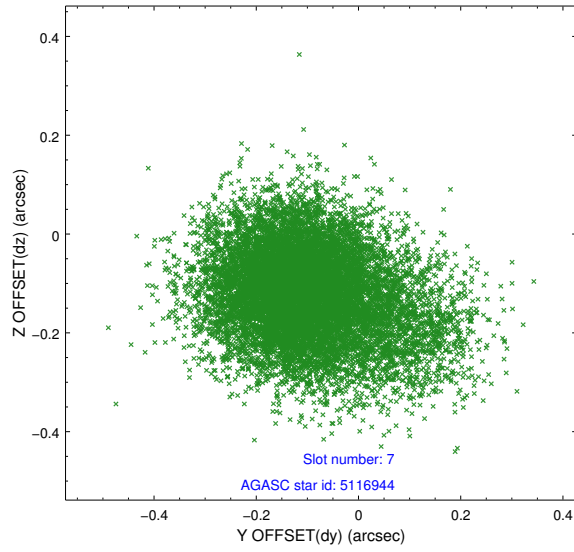
2.4.3 Slot 5



2.4.4 Slot 6

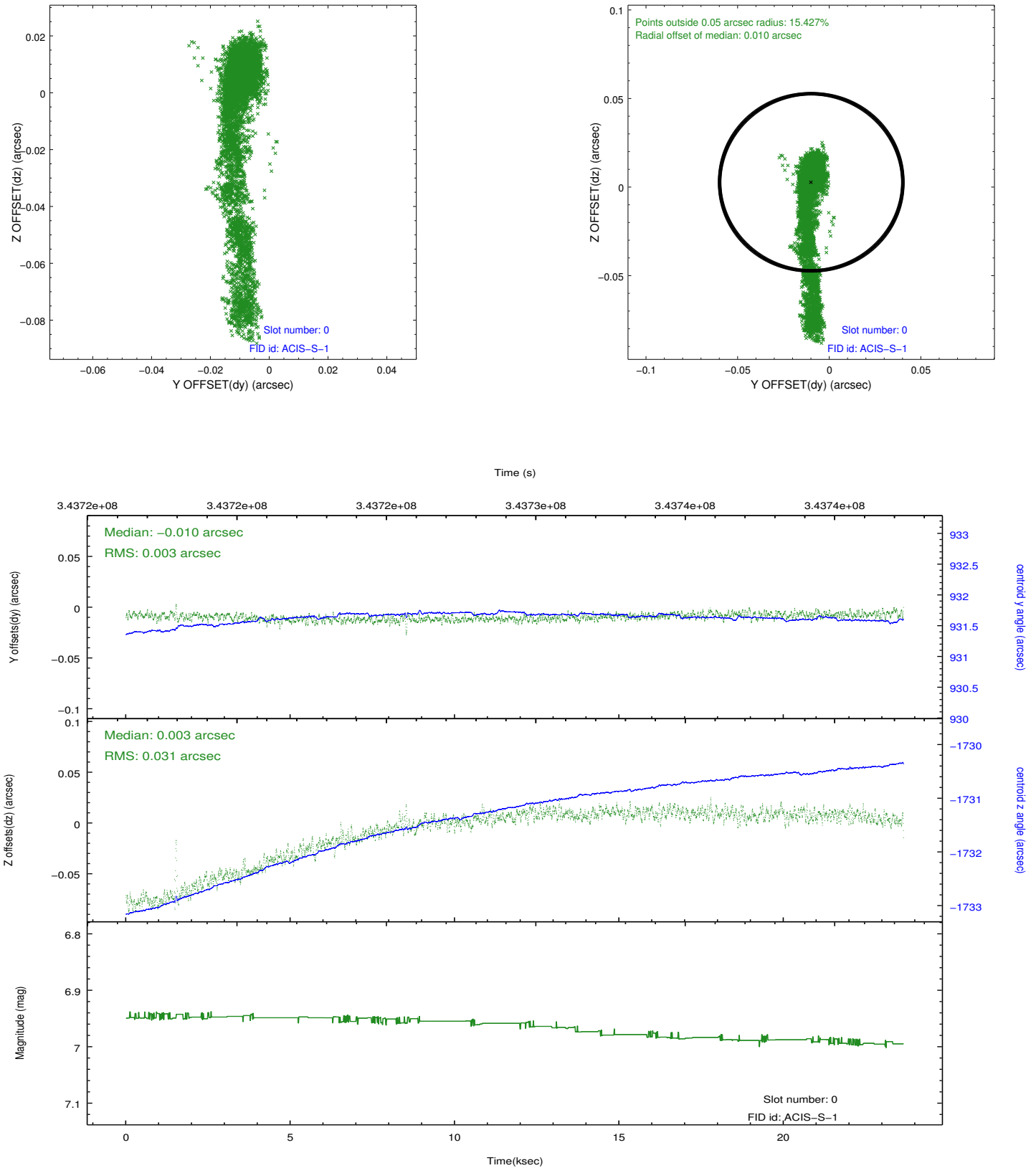


2.4.5 Slot 7

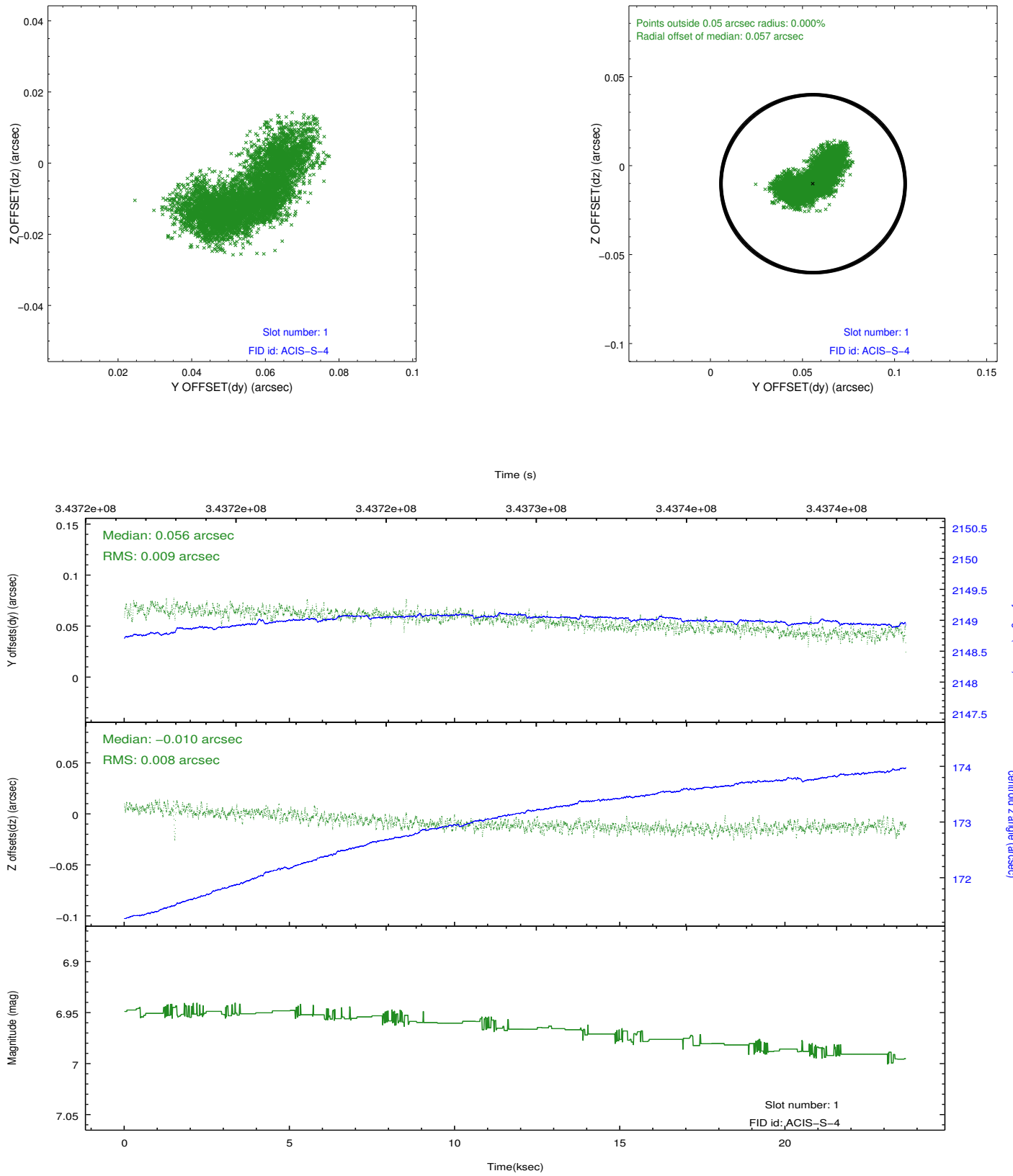


2.5 FID Slots

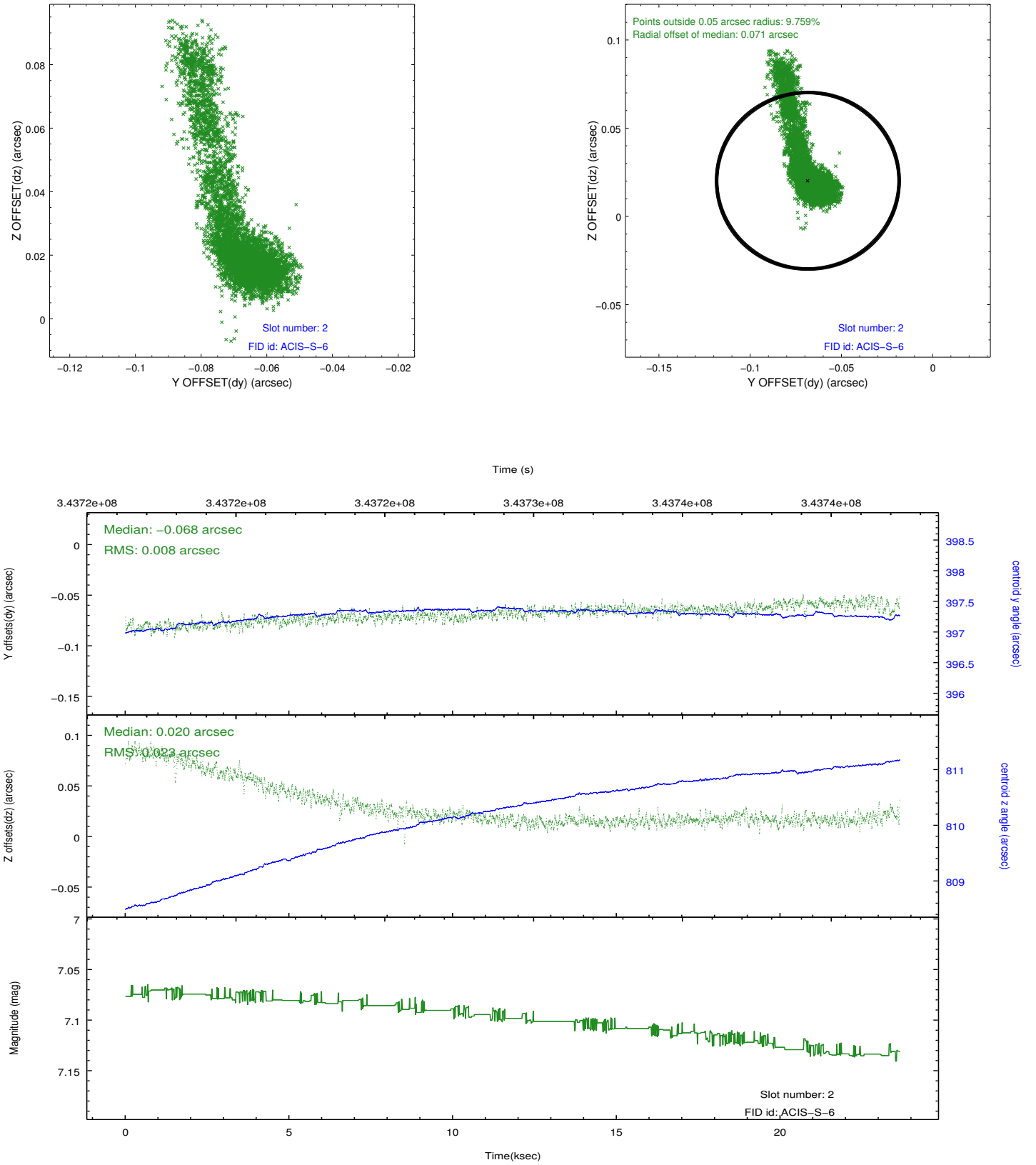
2.5.1 Slot 0



2.5.2 Slot 1



2.5.3 Slot 2



A Summary

A.1 Status

V&V Scientist	Jen Lauer
V&V Date (YYYY-MM-DD)	2012.05.31
V&V Edition	1
V&V Disposition and Status	OK
V&V Charge Time	23.6437001

A.2 Comments