

# V&V Reference Report

## L2 ASCDS Version : 8.4.4

Observation 10315 - L2 Version 2  
Chandra X-Ray Center

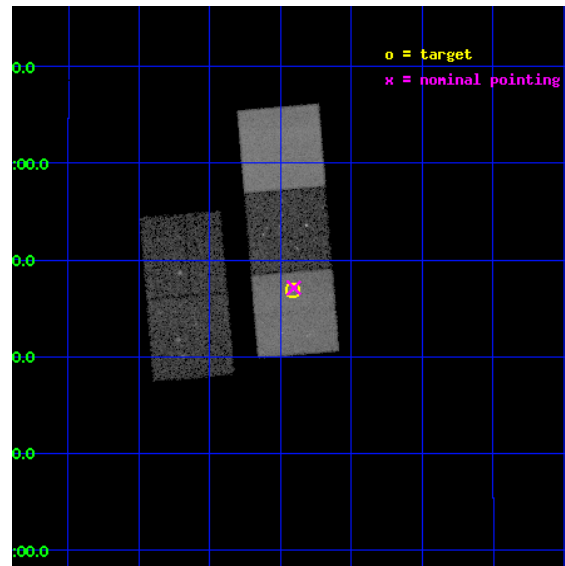
L2 Processing Date : May 31 2012

## Contents

<b>1</b>	<b>Front</b>	<b>2</b>
<b>2</b>	<b>OBI</b>	<b>3</b>
2.1	OBI . . . . .	3
2.1.1	Images . . . . .	3
2.1.2	Bias . . . . .	3
2.1.3	Parameters . . . . .	4
2.1.4	Events . . . . .	4
2.2	Compared Parameters . . . . .	5
2.3	Aspect . . . . .	6
2.4	Star Slots . . . . .	9
2.4.1	Slot 3 . . . . .	9
2.4.2	Slot 4 . . . . .	10
2.4.3	Slot 5 . . . . .	11
2.4.4	Slot 6 . . . . .	12
2.4.5	Slot 7 . . . . .	13
2.5	FID Slots . . . . .	14
2.5.1	Slot 0 . . . . .	14
2.5.2	Slot 1 . . . . .	15
2.5.3	Slot 2 . . . . .	16
<b>A</b>	<b>Summary</b>	<b>17</b>
A.1	Status . . . . .	17
A.2	Comments . . . . .	17

# 1 Front

seq_num	701858	Sequence number
obs_id	10315	Observation id
title	Two to Tango? Binary Quasars, their Environments, and the Merger Hypothesis	Proposal title
observer	Dr. Paul Green	Principal investigator
object	SDSSJ1254+0846	Source name
dtcycle	0	&#160
cycle	P	events from which exps? Prim/Second/Both
ra_targ	193.72875	Observer's specified target RA [deg]
dec_targ	8.781194	Observer's specified target Dec [deg]
ra_nom	193.72651697205	Nominal RA [deg]
dec_nom	8.7855090923546	Nominal Dec [deg]
roll_nom	85.156975550767	Nominal Roll [deg]
revision	2	Processing version of data
ontime	16178.900124431	Sum of GTIs [s]
livetime	15967.510883572	Livetime [s]
ontime2	16175.759104192	Sum of GTIs [s]
ontime3	16175.759114087	Sum of GTIs [s]
ontime5	16178.900124431	Sum of GTIs [s]
ontime6	16178.900124431	Sum of GTIs [s]
ontime7	16178.900124431	Sum of GTIs [s]
l2events	178997	Number of level 2 events

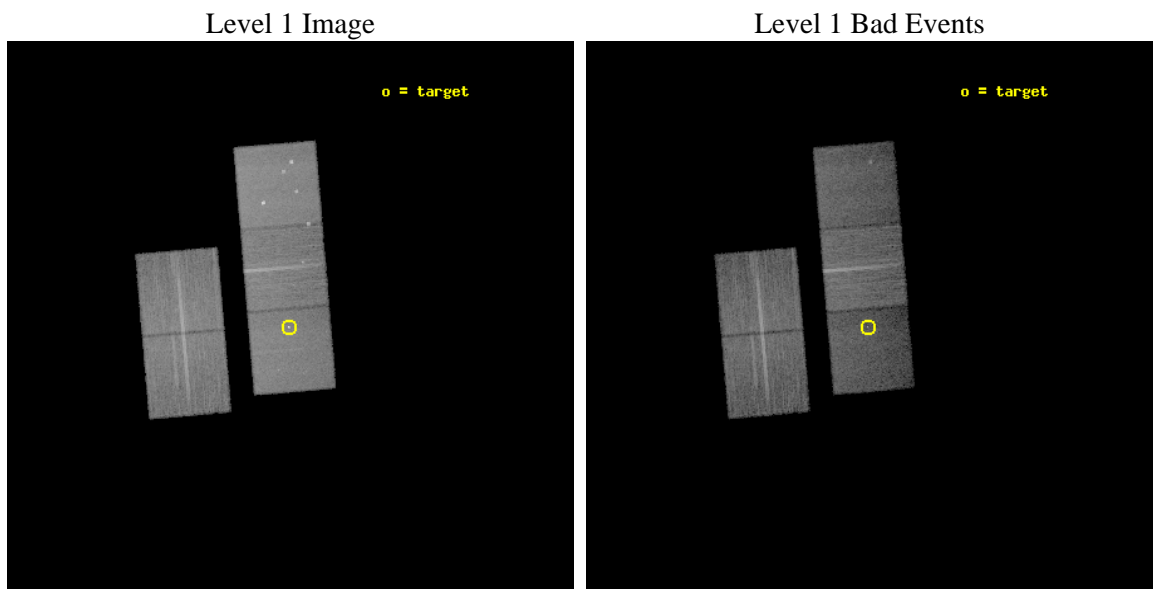




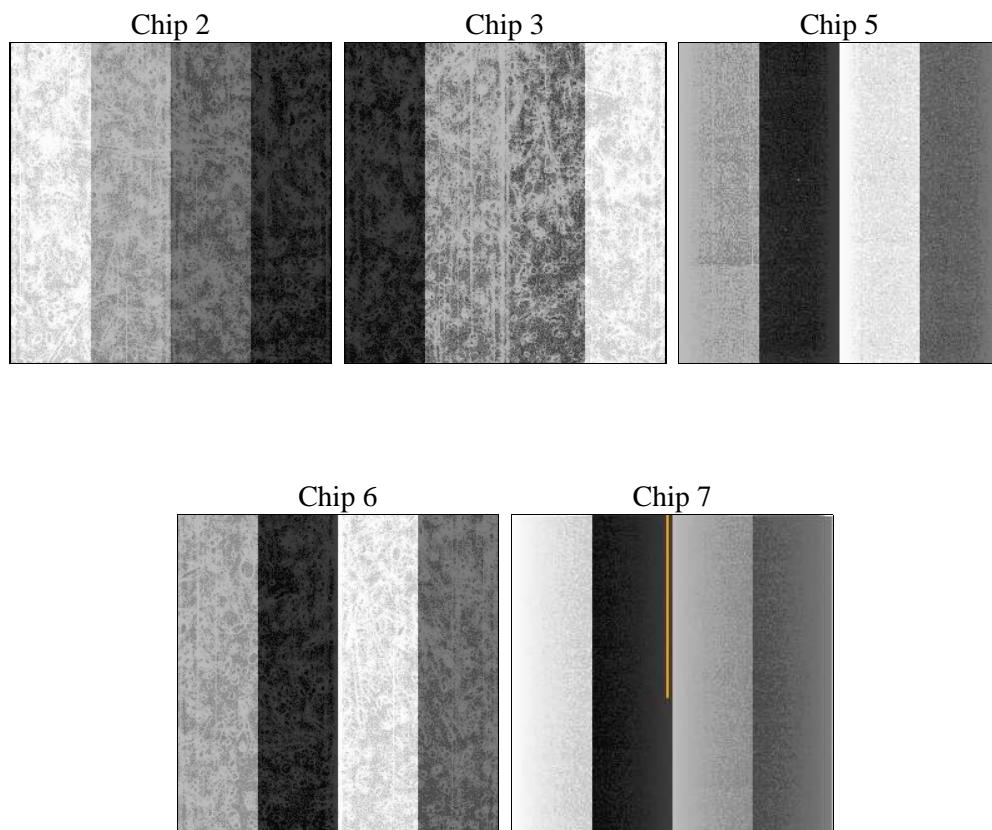
## 2 OBI

### 2.1 OBI

#### 2.1.1 Images



#### 2.1.2 Bias



### 2.1.3 Parameters

obi_num	0	Obi number	sched_exp_time	16000.000000	[s] Scheduled observation exposure time
ascdsver	8.4.4	Processing system revision	ontime	16178.900124431	Sum of GTIs [s]
caldsver	4.4.9	&#160	ontime2	16175.759104192	Sum of GTIs [s]
date	2012-05-31T14:47:03	Date and time of file creation	ontime3	16175.759114087	Sum of GTIs [s]
revision	2	Processing version of data	ontime5	16178.900124431	Sum of GTIs [s]
			ontime6	16178.900124431	Sum of GTIs [s]
			ontime7	16178.900124431	Sum of GTIs [s]
			l1events	739885	Number of level 1 events

### 2.1.4 Events

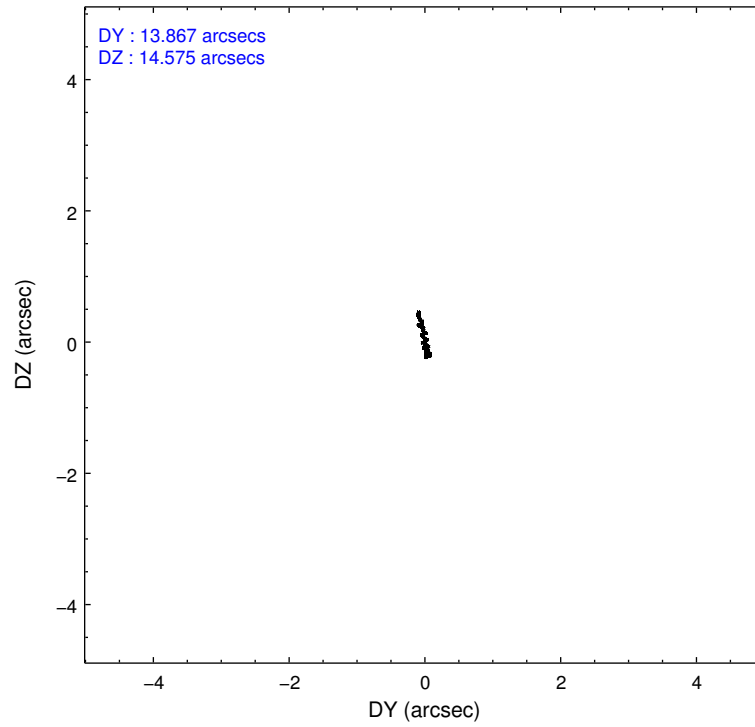
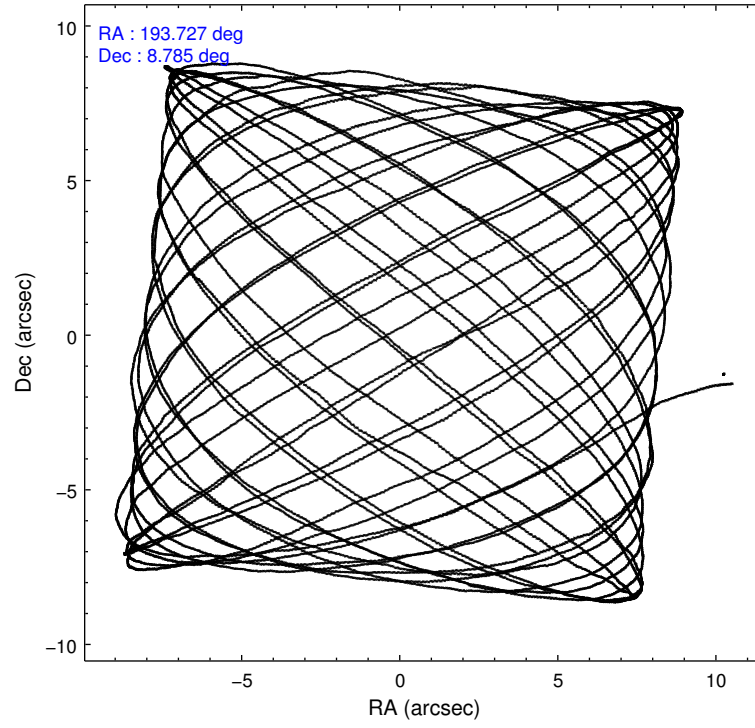
	ccd 2	ccd 3	ccd 5	ccd 6	ccd 7
level 1 events	143127	134760	183108	139010	139880
rejected events	130412	122444	91703	124935	74334
rejected %	91%	90%	50%	89%	53%

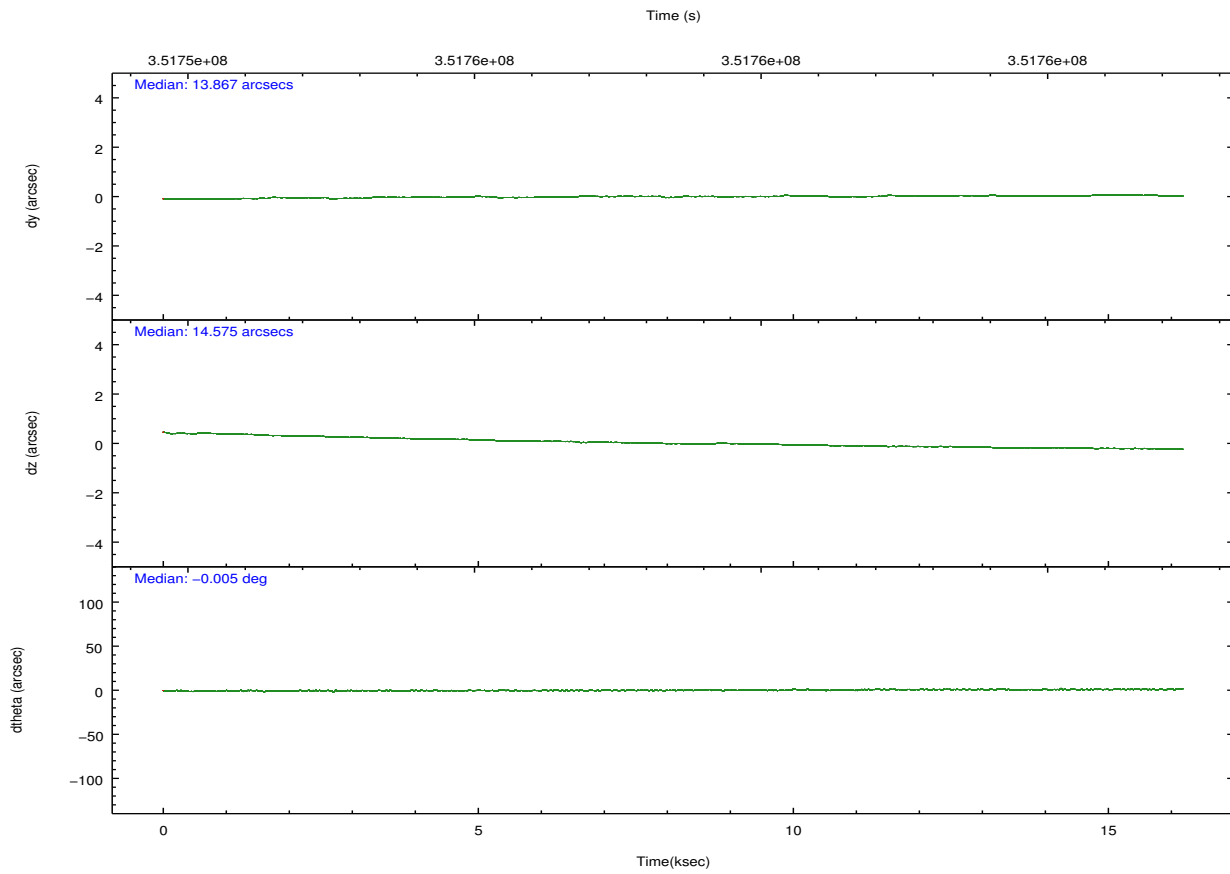
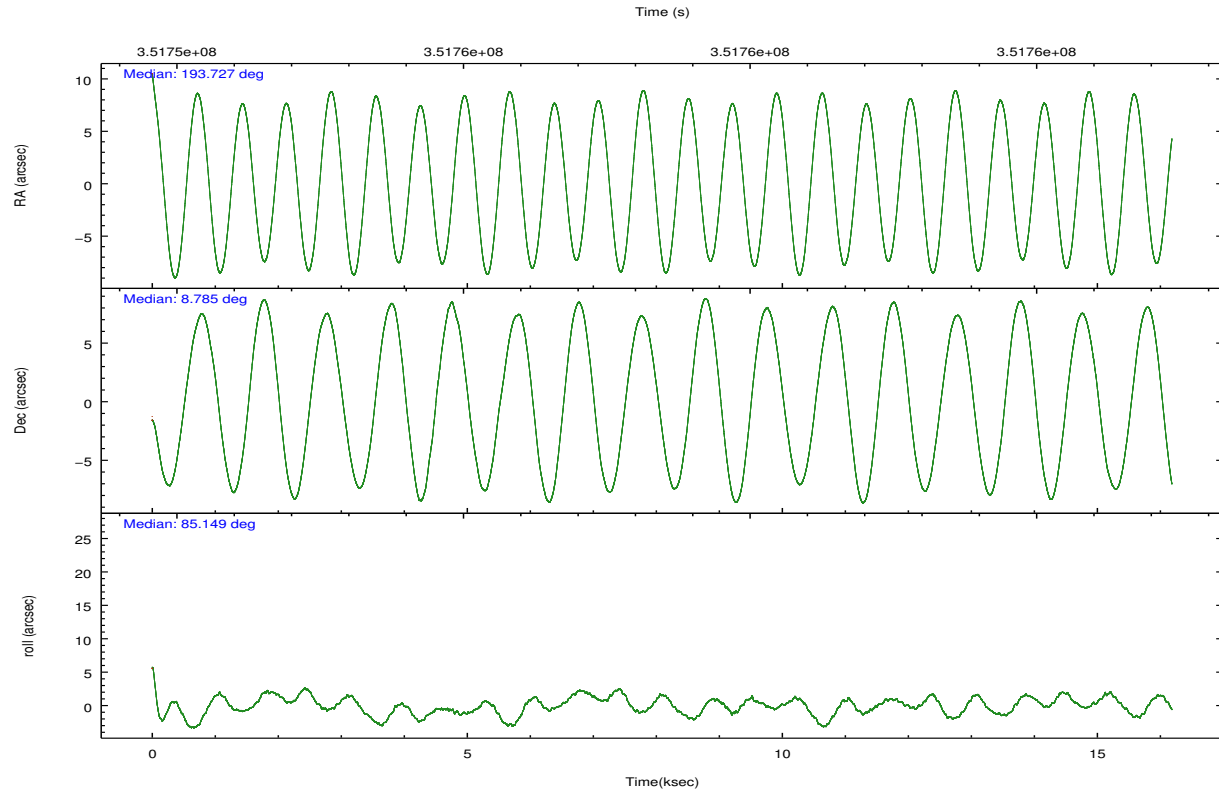
	ccd 2	ccd 3	ccd 5	ccd 6	ccd 7
grade 0 events	5002	4986	13213	5959	8428
	3%	3%	7%	4%	6%
grade 1 events	82	92	436	80	244
	0%	0%	0%	0%	0%
grade 2 events	3284	2836	29714	3278	15192
	2%	2%	16%	2%	10%
grade 3 events	1358	1434	4075	1576	6423
	0%	1%	2%	1%	4%
grade 4 events	1511	1426	3838	1465	6617
	1%	1%	2%	1%	4%
grade 5 events	3893	4724	14442	4869	14569
	2%	3%	7%	3%	10%
grade 6 events	2434	2513	47387	2821	33534
	1%	1%	25%	2%	23%
grade 7 events	125563	116749	70003	118962	54873
	87%	86%	38%	85%	39%

## 2.2 Compared Parameters

Parameter	Planned	Actual	Parameter	Planned	Actual
Instrument	ACIS	ACIS	Obspar format version number	7	7
Detector	ACIS-23567	ACIS-23567	Obspar file type	PREDICTED	ACTUAL
Grating	NONE	NONE	Obspar update status	NONE	UPDATED
Data mode	VFAINT	VFAINT	CCD I0 on	N	N
Observation mode	POINTING	POINTING	CCD I1 on	N	N
[deg] Pointing RA	193.738638	193.7265169720496	CCD I2 on	O2	Y
[deg] Pointing Dec	8.760932	8.785509092354564	CCD I3 on	O3	Y
[deg] Pointing Roll	84.998491	85.15697555076672	CCD S0 on	N	N
[mm] SIM focus pos	-0.684267	-0.6828225247311905	CCD S1 on	O1	Y
[mm] SIM defocus	0	0.001444936568705701	CCD S2 on	O4	Y
[mm] SIM translation stage pos	-190.132523	-190.1425803651734	CCD S3 on	Y	Y
[mm] SIM translation stage offset	0	0.01005778216563158	CCD S4 on	N	N
[s] Observation start time (MET)	351750551.184000	351748948.31273	CCD S5 on	N	N
Observation start date	2009-02-23T04:28:05	2009-02-23T04:02:28	Number of optional ACIS chips dropped	0	0
[s] Observation end time (MET)	351766551.184000	351766814.06362	On-chip summing requested	N	N
Observation end date	2009-02-23T08:54:45	2009-02-23T09:00:14	Subarray requested	NONE	NONE
Read mode	TIMED	TIMED	Alternating exposures requested	N	N
			[s] Primary exposure time	0.000000	3.1

## 2.3 Aspect



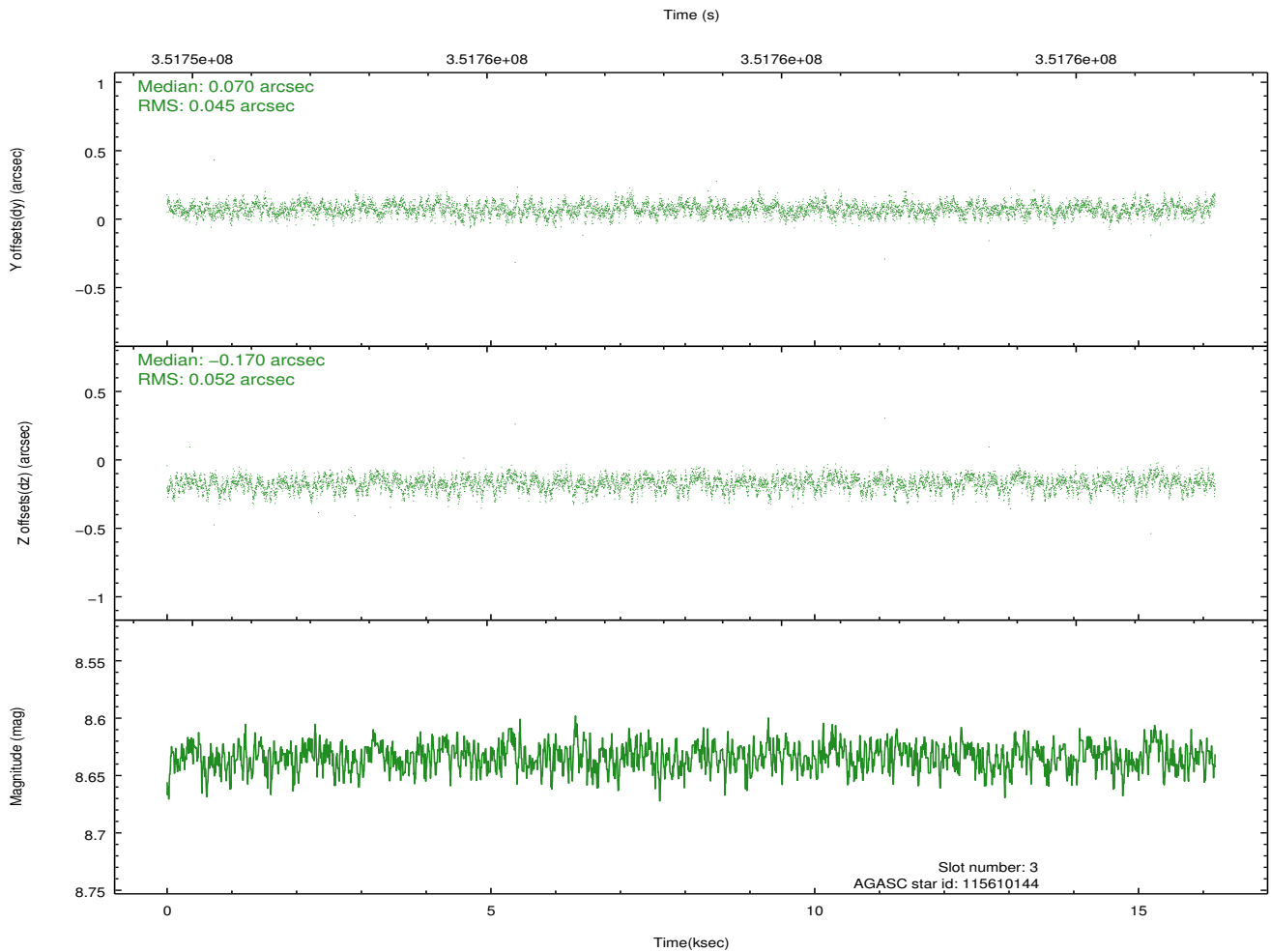
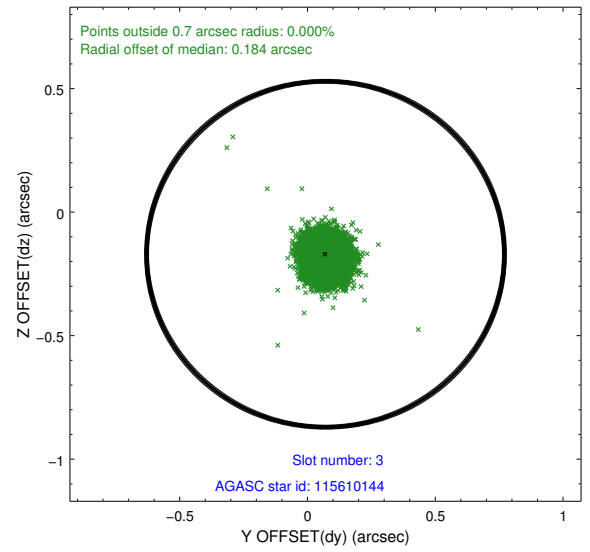
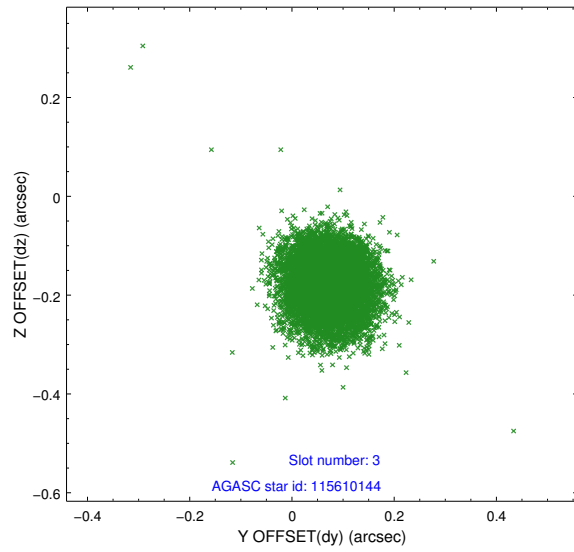


### Slot Statistics

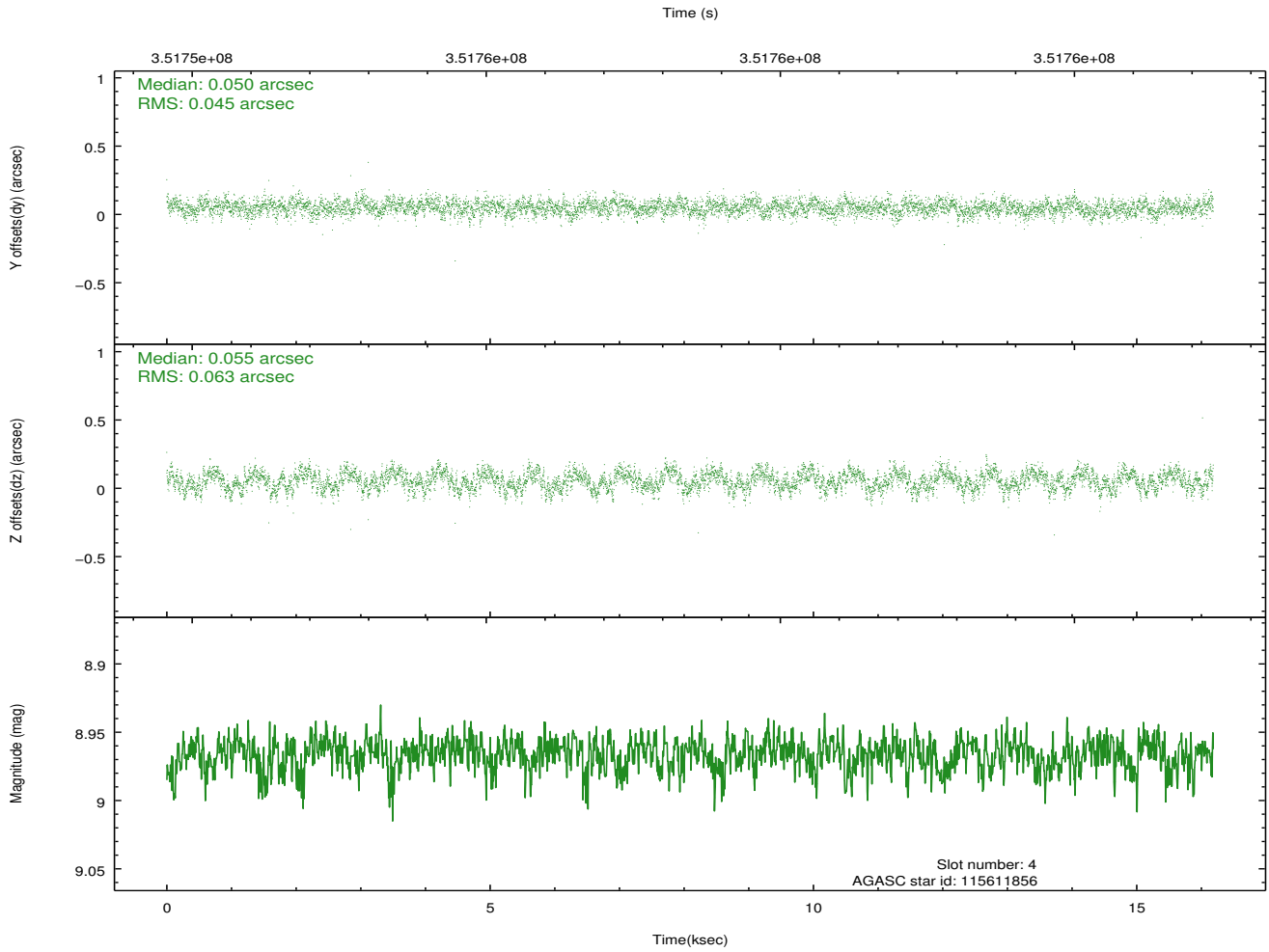
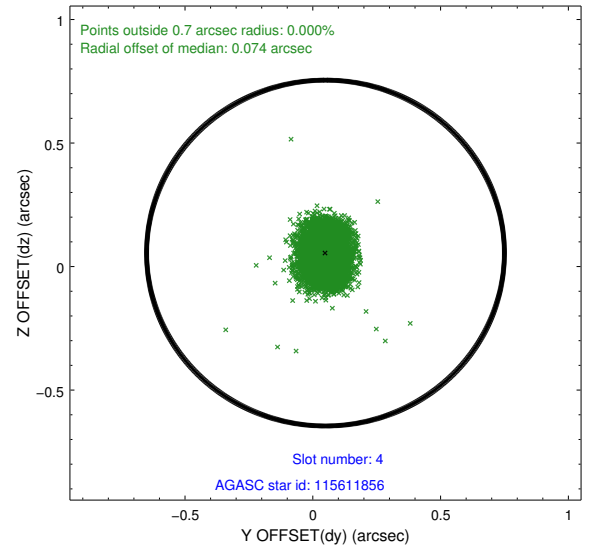
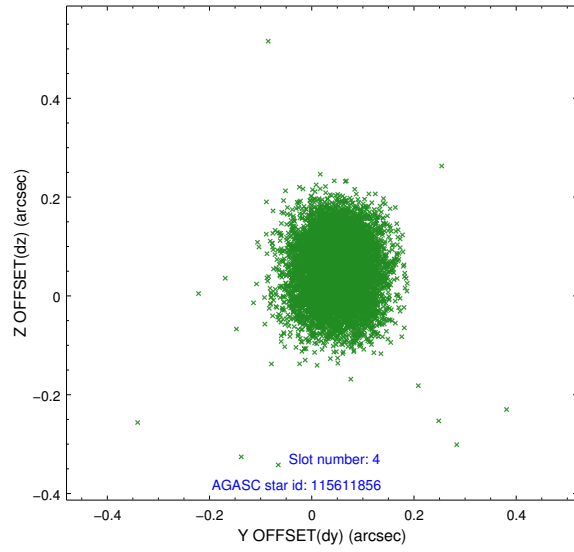
slot	status	id	mag	n_pts	med_dy	med_dz	dr1	dr2	ra	dec	mean_y	mean_z
0	FID	ACIS-S-2	6.93	3948	-0.058	-0.027	0.008	0.013	0.000000	0.000000	-766.83	-1735.97
1	FID	ACIS-S-4	7.02	3947	0.178	0.035	0.005	0.010	0.000000	0.000000	2146.53	172.33
2	FID	ACIS-S-5	7.05	3948	-0.152	0.000	0.008	0.013	0.000000	0.000000	-1819.45	166.23
3	GUIDE	115610144	8.63	7895	0.070	-0.170	0.073	0.117	193.304773	8.763673	-123.86	1538.49
4	GUIDE	115611856	8.97	7889	0.050	0.055	0.082	0.132	193.621146	8.503637	-958.80	336.17
5	GUIDE	115736816	7.47	7896	-0.121	0.070	0.057	0.094	194.147494	9.316637	2120.82	-1271.70
6	GUIDE	115739520	8.23	7893	-0.094	0.086	0.070	0.112	194.147603	9.156765	1547.66	-1322.71
7	GUIDE	115738264	7.55	7895	0.099	-0.033	0.090	0.157	194.465047	9.338604	2300.01	-2388.66

## 2.4 Star Slots

### 2.4.1 Slot 3

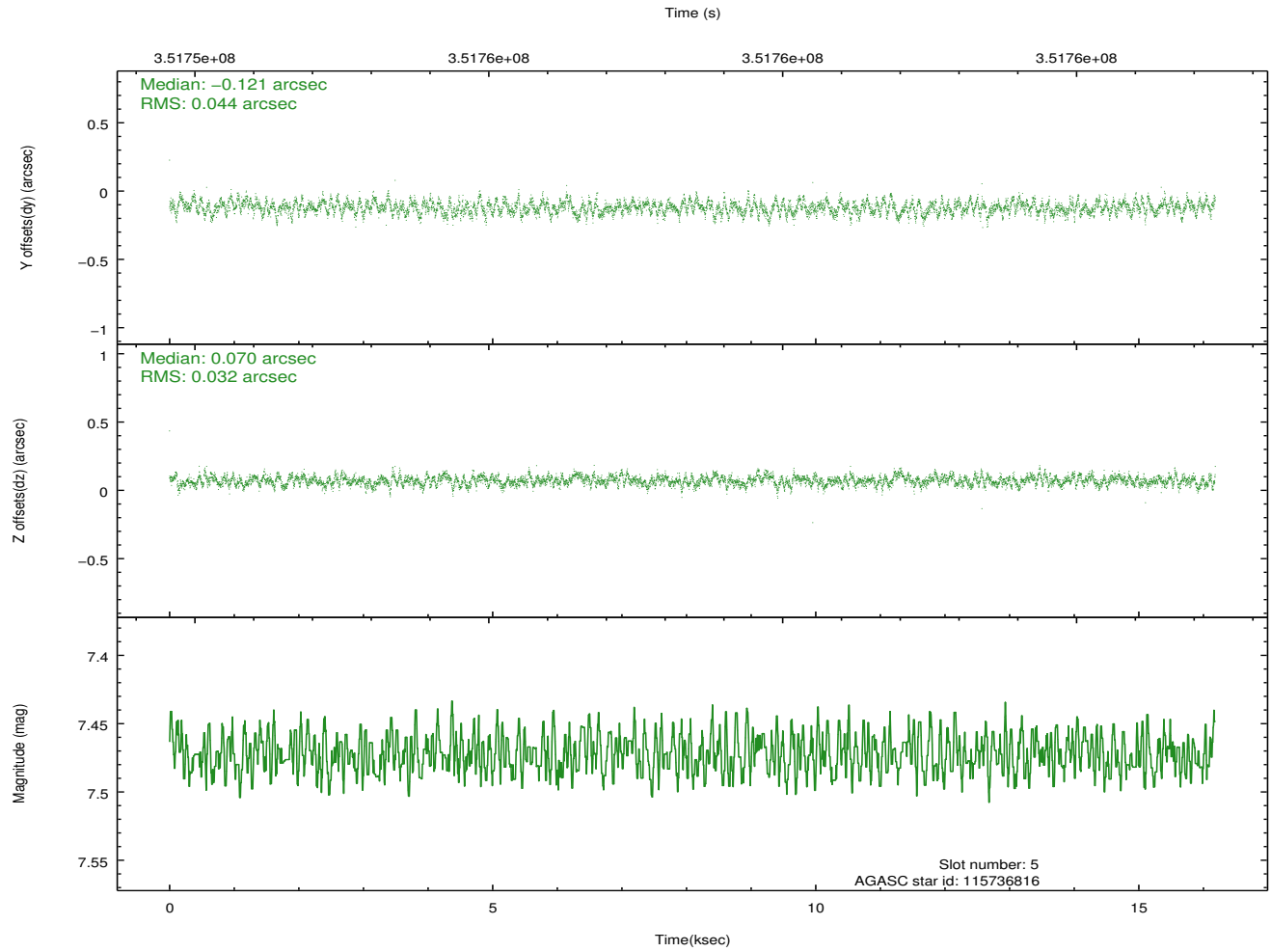
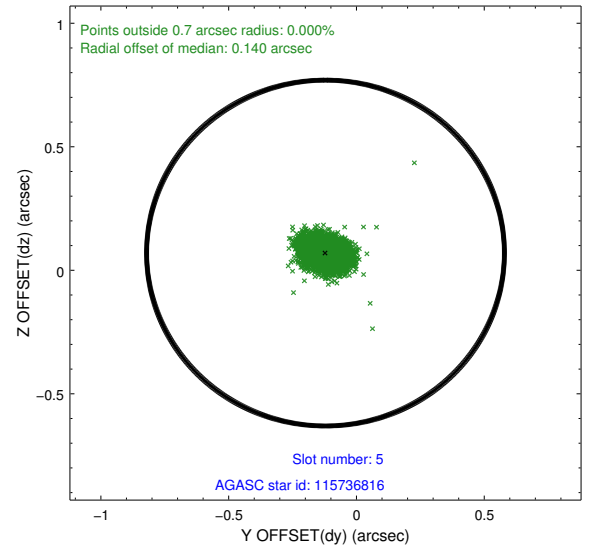
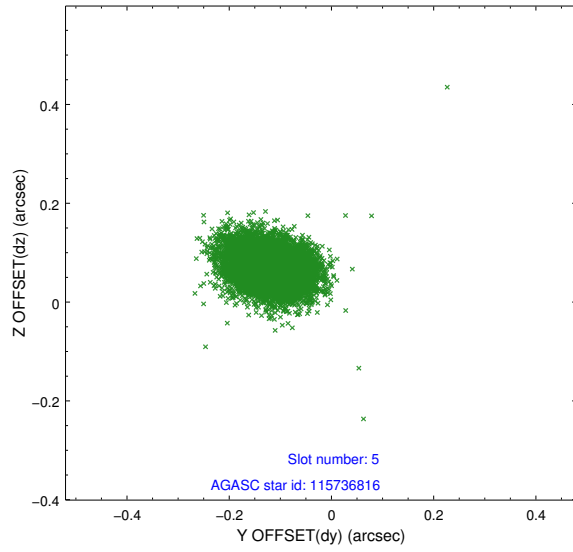


## 2.4.2 Slot 4

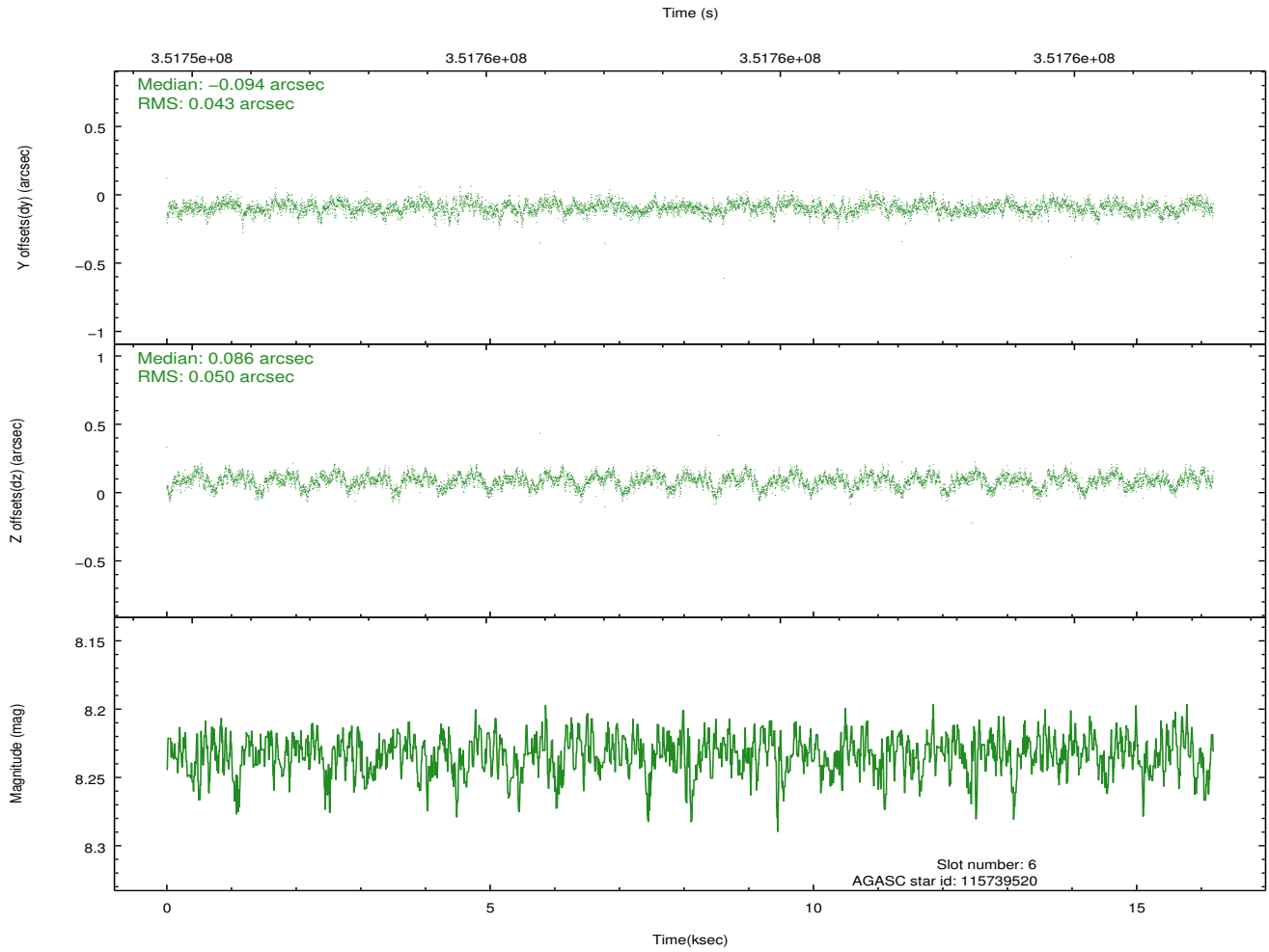
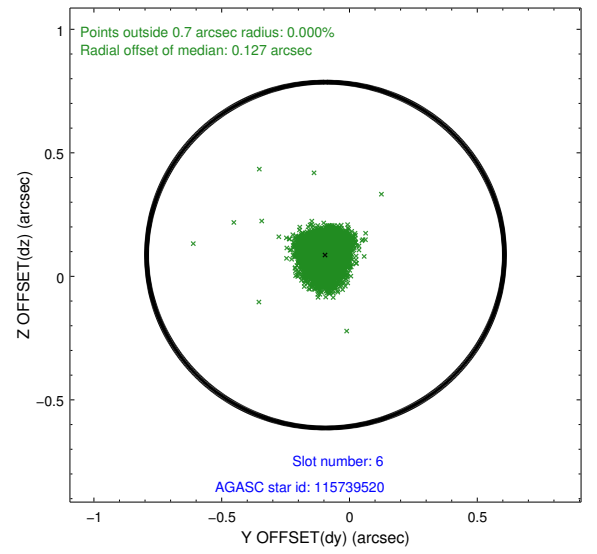
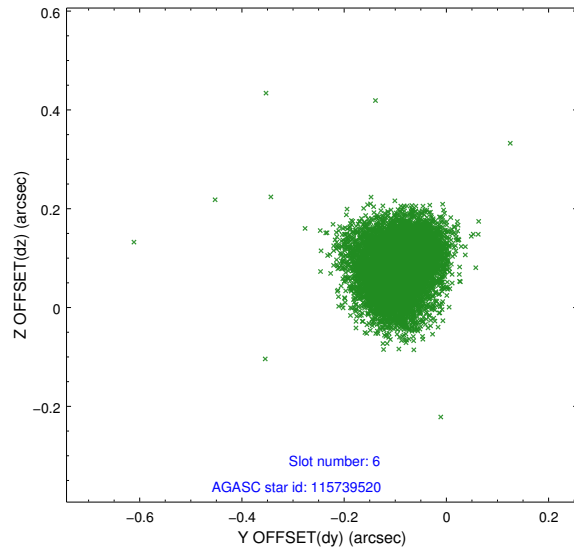




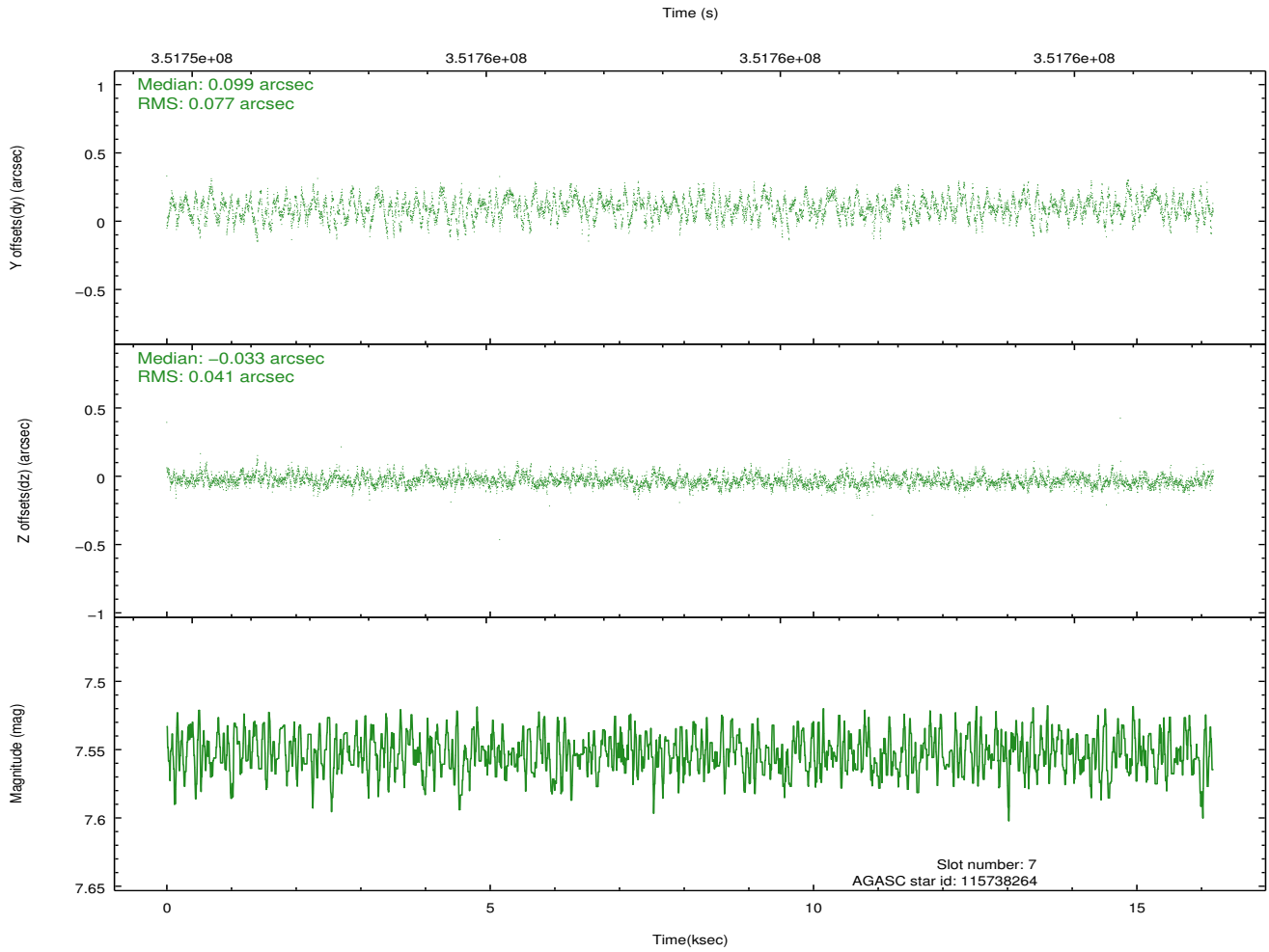
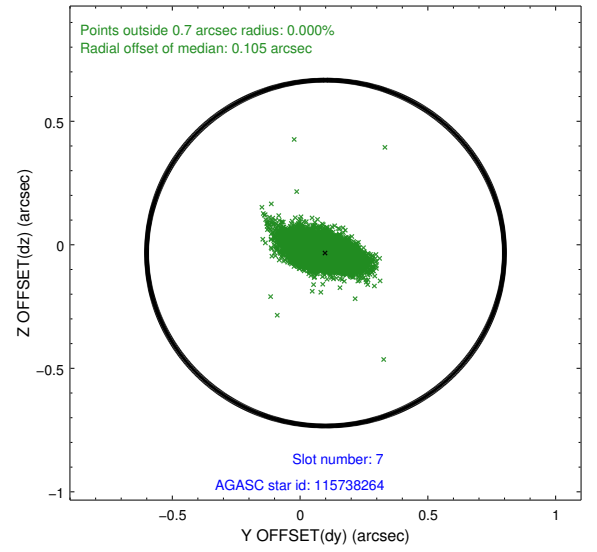
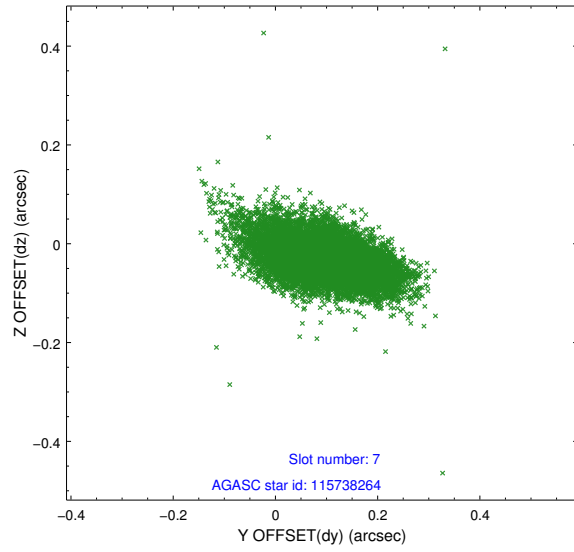
### 2.4.3 Slot 5



## 2.4.4 Slot 6

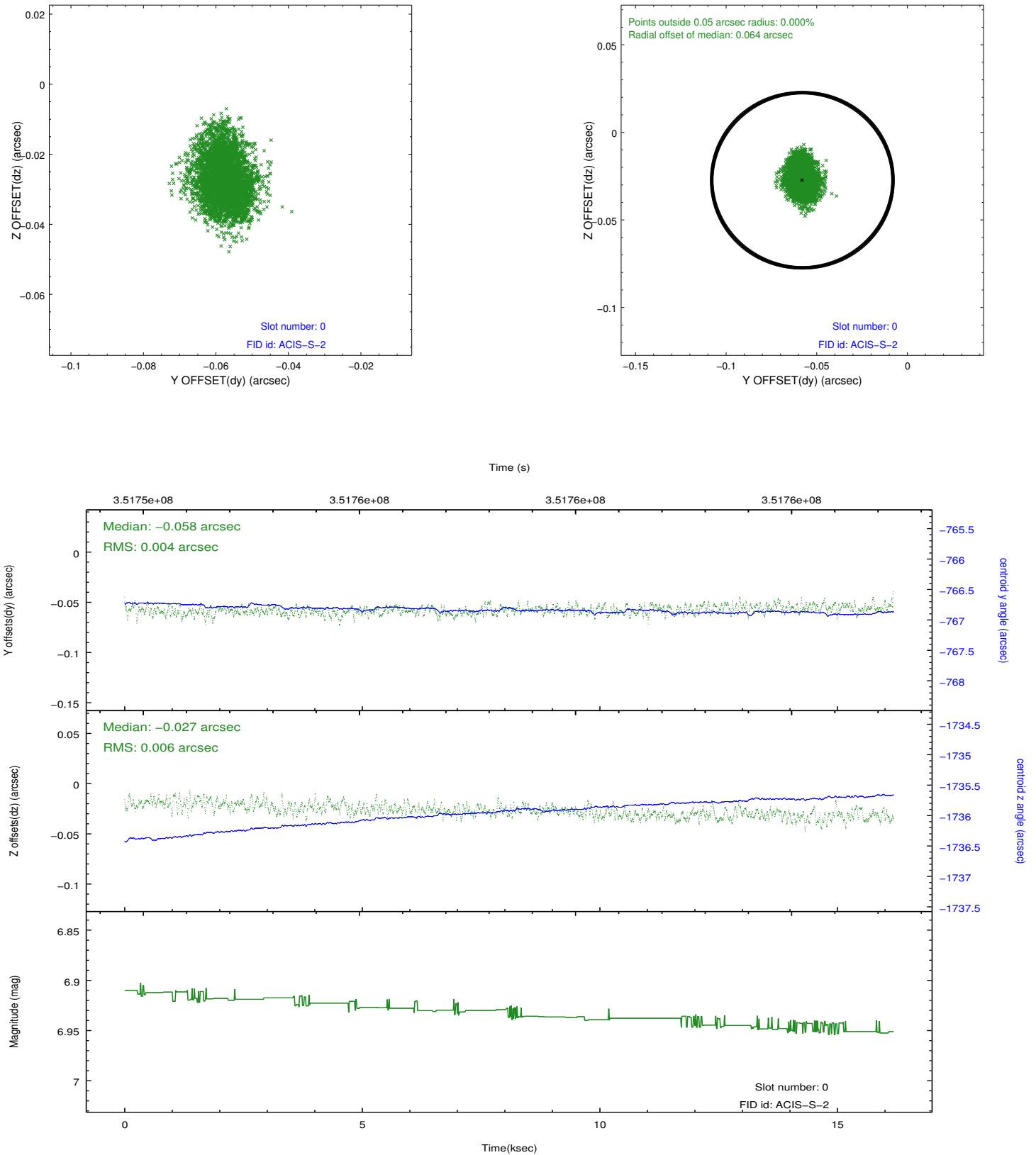


## 2.4.5 Slot 7

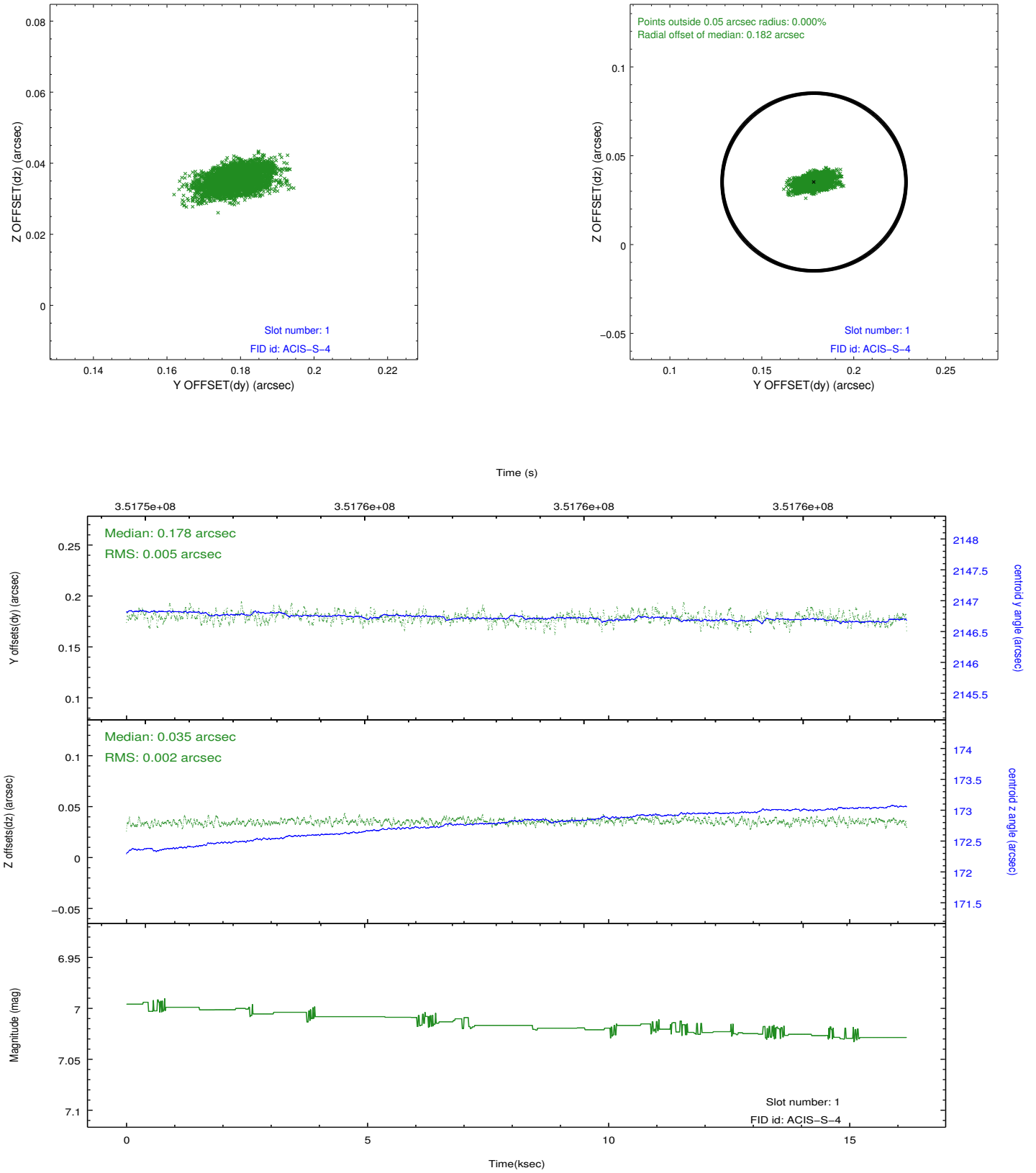


## 2.5 FID Slots

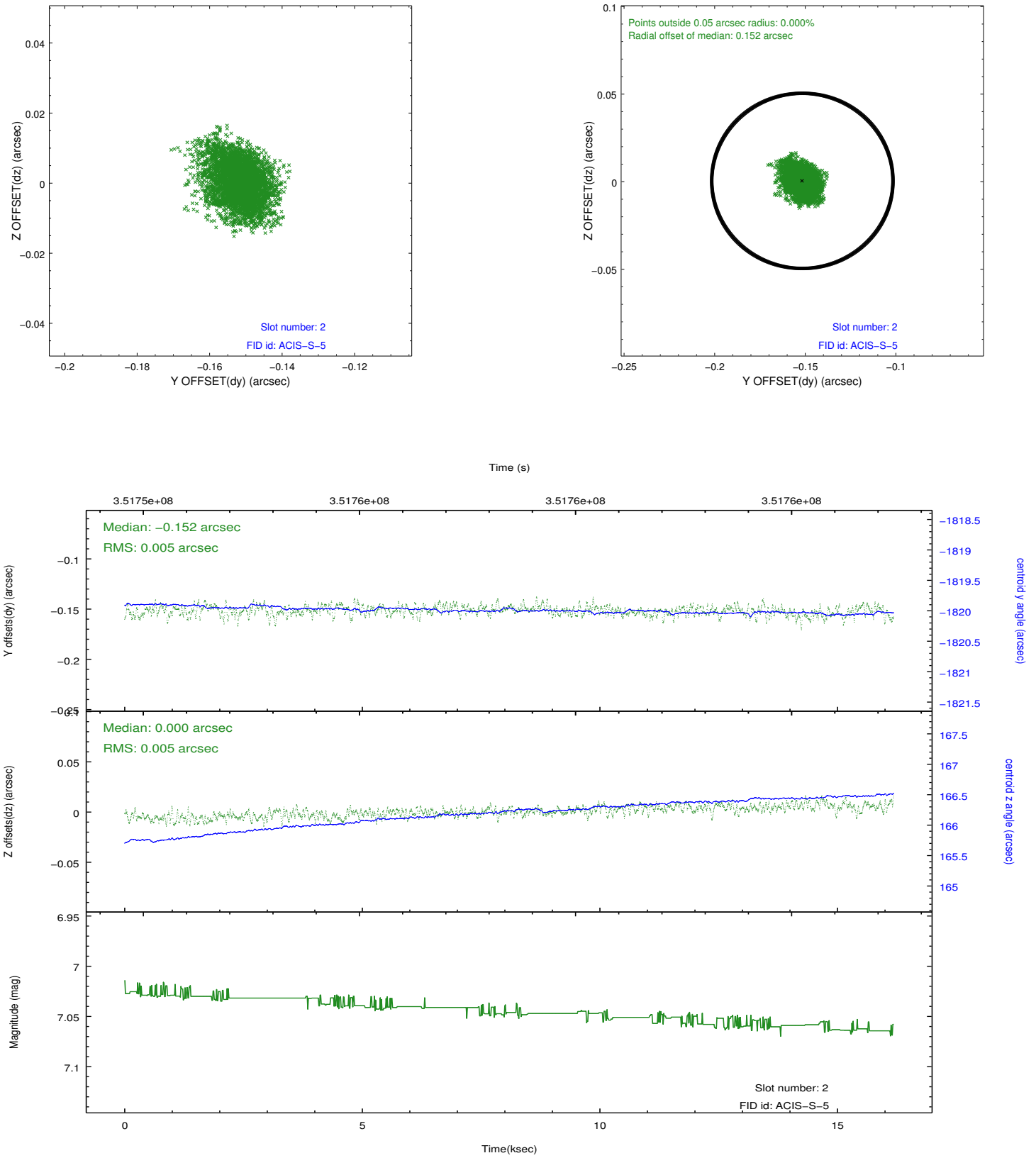
### 2.5.1 Slot 0



## 2.5.2 Slot 1



### 2.5.3 Slot 2



## A Summary

### A.1 Status

V&V Scientist	Joy Nichols
V&V Date (YYYY-MM-DD)	2012.06.06
V&V Edition	1
V&V Disposition and Status	OK
V&V Charge Time	16.1789001

### A.2 Comments