

V&V Reference Report

L2 ASCDS Version : 8.4.4

Observation 10255 - L2 Version 2
Chandra X-Ray Center

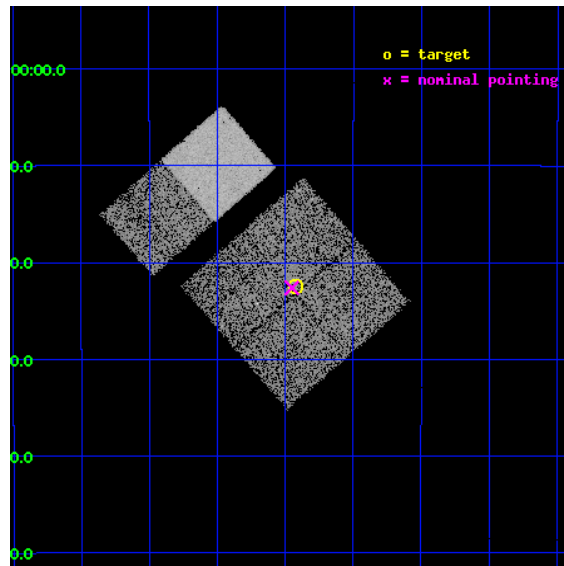
L2 Processing Date : Jun 1 2012

Contents

1	Front	2
2	OBI	3
2.1	OBI	3
2.1.1	Images	3
2.1.2	Bias	3
2.1.3	Parameters	4
2.1.4	Events	4
2.2	Compared Parameters	5
2.3	Aspect	6
2.4	Star Slots	9
2.4.1	Slot 3	9
2.4.2	Slot 4	10
2.4.3	Slot 5	11
2.4.4	Slot 6	12
2.4.5	Slot 7	13
2.5	FID Slots	14
2.5.1	Slot 0	14
2.5.2	Slot 1	15
2.5.3	Slot 2	16
A	Summary	17
A.1	Status	17
A.2	Comments	17

1 Front

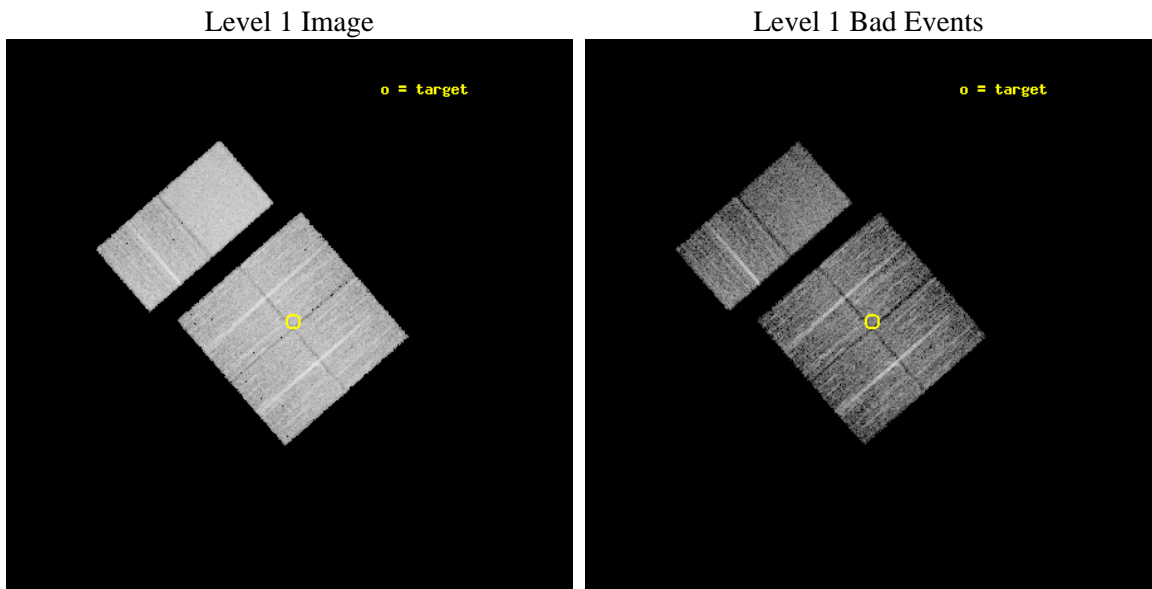
seq_num	701798	Sequence number
obs_id	10255	Observation id
title	Zeroing in on the sources of Ultrahigh Energy Cosmic Rays	Proposal
observer	Prof. Glennys Farrar	Principal investigator
object	NGC 2989	Source name
dtcycle	0	
cycle	P	events from which exps? Prim/Second/Both
ra_targ	146.355	Observer's specified target RA [deg]
dec_targ	-18.373889	Observer's specified target Dec [deg]
ra_nom	146.36281192893	Nominal RA [deg]
dec_nom	-18.377114456314	Nominal Dec [deg]
roll_nom	318.93699074127	Nominal Roll [deg]
revision	2	Processing version of data
ontime	5027.1999813318	Sum of GTIs [s]
liveltime	4963.5425481518	Livetime [s]
ontime0	5027.1999813318	Sum of GTIs [s]
ontime1	5027.1999813318	Sum of GTIs [s]
ontime2	5027.1999813318	Sum of GTIs [s]
ontime3	5027.1999813318	Sum of GTIs [s]
ontime6	5027.1999813318	Sum of GTIs [s]
ontime7	5027.1999813318	Sum of GTIs [s]
l2events	57692	Number of level 2 events



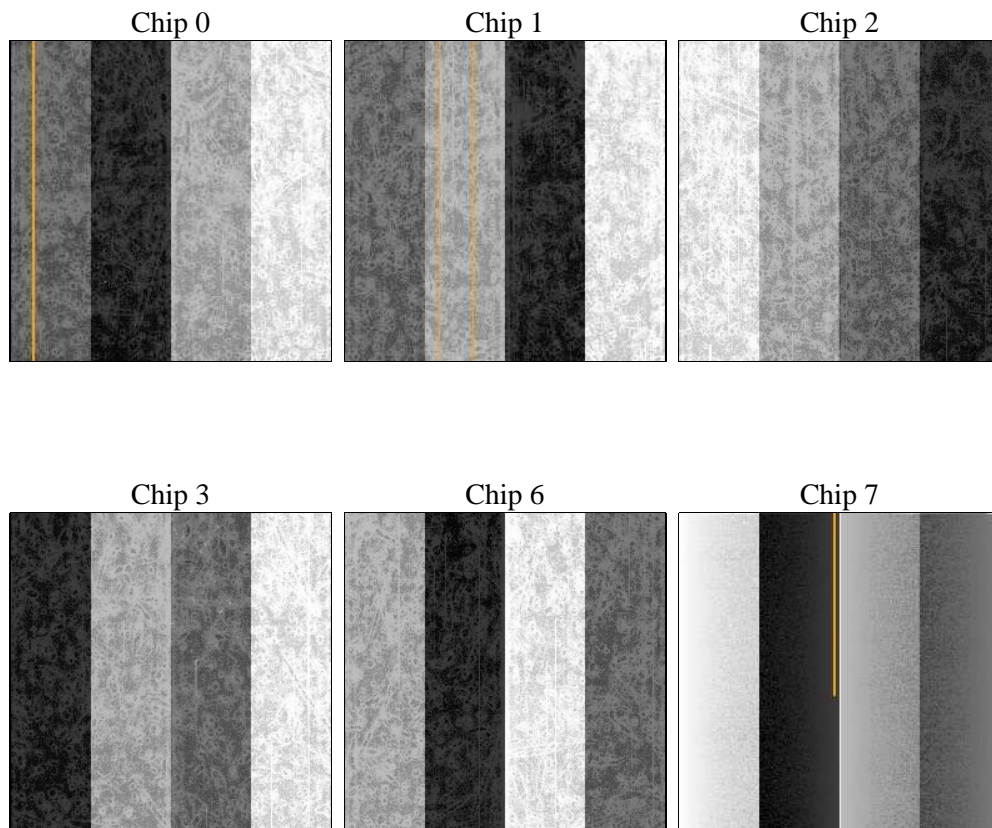
2 OBI

2.1 OBI

2.1.1 Images



2.1.2 Bias



2.1.3 Parameters

obi_num	0	Obi number	sched_exp_time	5000.000000	[s] Scheduled observation exposure time
ascdsver	8.4.4	Processing system revision	ontime	5027.1999813318	Sum of GTIs [s]
caldbver	4.4.9	 	ontime0	5027.1999813318	Sum of GTIs [s]
date	2012-06-01T23:43:48	Date and time of file creation	ontime1	5027.1999813318	Sum of GTIs [s]
revision	2	Processing version of data	ontime2	5027.1999813318	Sum of GTIs [s]
			ontime3	5027.1999813318	Sum of GTIs [s]
			ontime6	5027.1999813318	Sum of GTIs [s]
			ontime7	5027.1999813318	Sum of GTIs [s]
			l1events	324275	Number of level 1 events

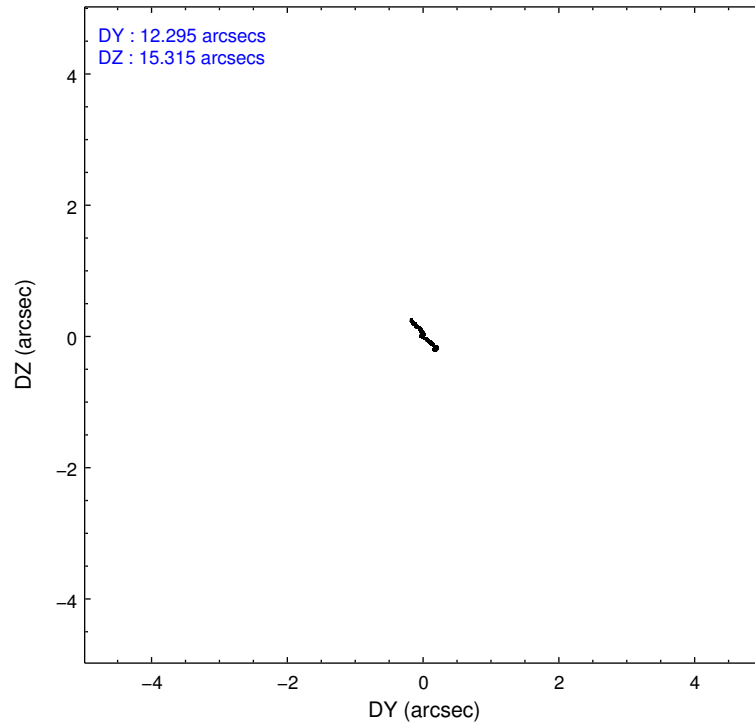
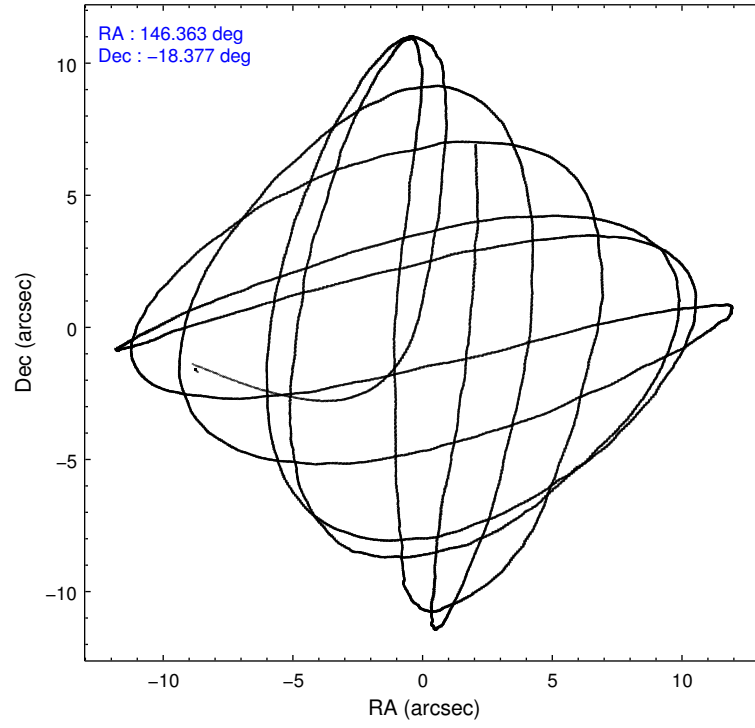
2.1.4 Events

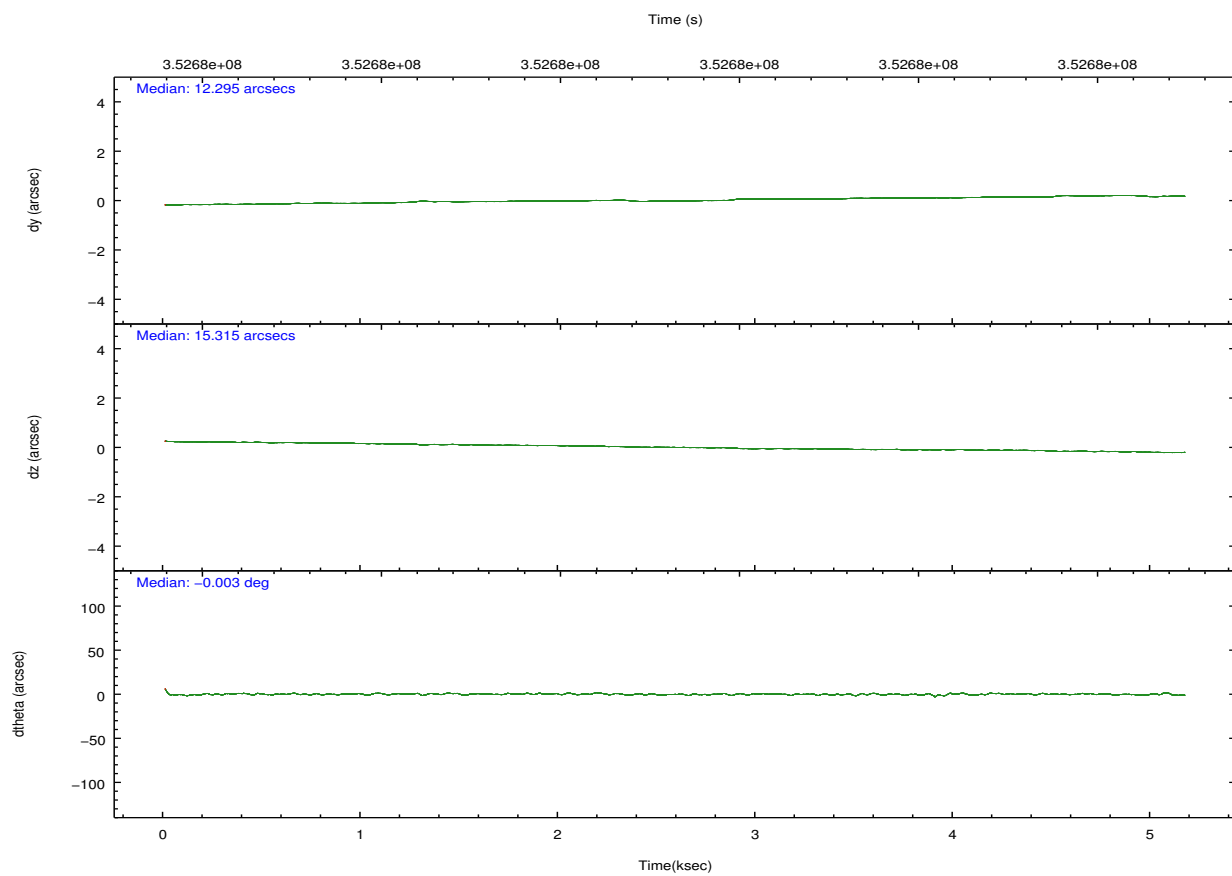
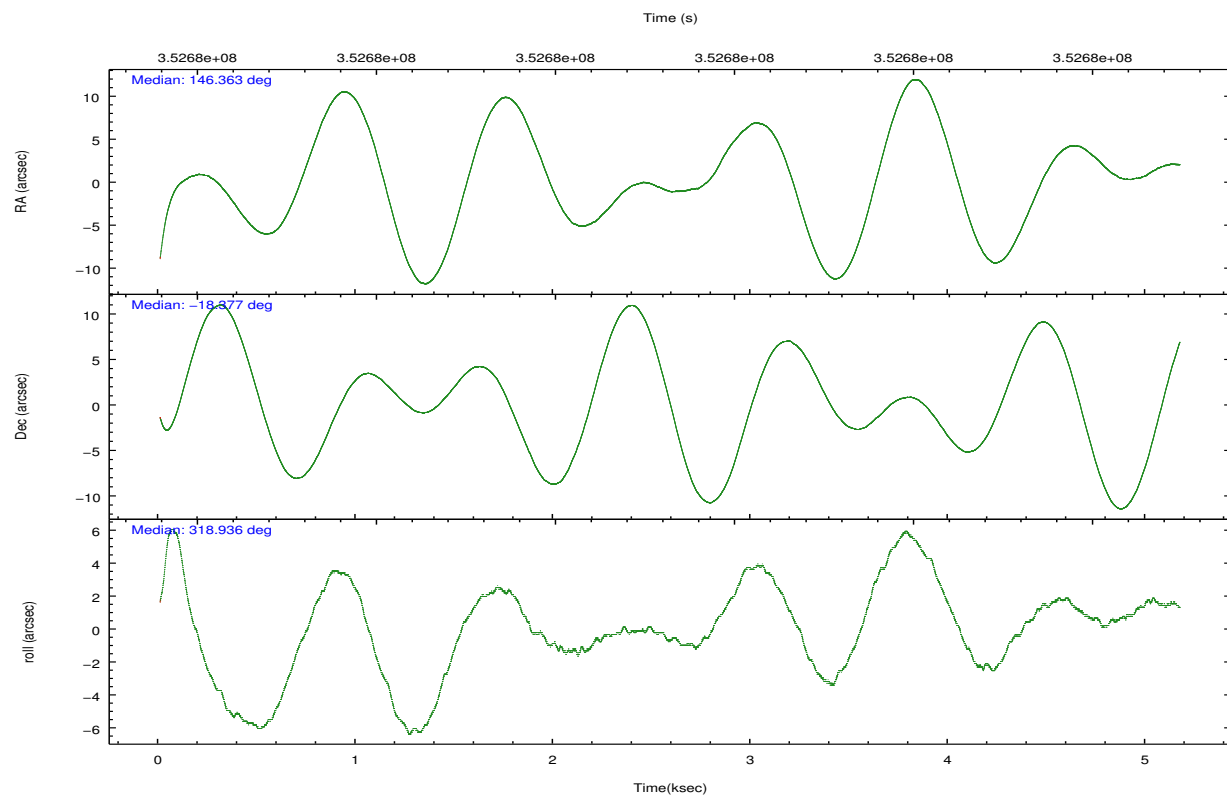
	ccd 0	ccd 1	ccd 2	ccd 3	ccd 6	ccd 7		ccd 0	ccd 1	ccd 2	ccd 3	ccd 6	ccd 7
level 1 events	49037	48489	51281	49972	53151	72345	grade 0 events	2752	2562	2741	2748	2490	2528
rejected events	42478	41652	44931	43694	46680	42022		5%	5%	5%	5%	4%	3%
rejected %	86%	85%	87%	87%	87%	58%	grade 1 events	26	33	38	30	38	71
								0%	0%	0%	0%	0%	0%
							grade 2 events	1482	1551	1302	1244	1477	6226
								3%	3%	2%	2%	2%	8%
							grade 3 events	632	659	572	579	565	2614
								1%	1%	1%	1%	1%	3%
							grade 4 events	552	659	618	588	584	2464
								1%	1%	1%	1%	1%	3%
							grade 5 events	2202	2415	2207	2448	2558	6734
								4%	4%	4%	4%	4%	9%
							grade 6 events	1146	1415	1128	1129	1359	16516
								2%	2%	2%	2%	2%	22%
							grade 7 events	40245	39195	42675	41206	44080	35192
								82%	80%	83%	82%	82%	48%

2.2 Compared Parameters

Parameter	Planned	Actual	Parameter	Planned	Actual
Instrument	ACIS	ACIS	Obspar format version number	7	7
Detector	ACIS-012367	ACIS-012367	Obspar file type	PREDICTED	ACTUAL
Grating	NONE	NONE	Obspar update status	NONE	UPDATED
Data mode	FAINT	FAINT	CCD I0 on	Y	Y
Observation mode	POINTING	POINTING	CCD I1 on	Y	Y
[deg] Pointing RA	146.334336	146.3628119289345	CCD I2 on	Y	Y
[deg] Pointing Dec	-18.371983	-18.37711445631449	CCD I3 on	Y	Y
[deg] Pointing Roll	318.719326	318.9369907412685	CCD S0 on	N	N
[mm] SIM focus pos	-0.782348	-0.7809083437167272	CCD S1 on	N	N
[mm] SIM defocus	0	0.001439871863259334	CCD S2 on	O2	Y
[mm] SIM translation stage pos	-233.592463	-233.5874344608287	CCD S3 on	O1	Y
[mm] SIM translation stage offset	0	-0.005018542100998502	CCD S4 on	N	N
[s] Observation start time (MET)	352678228.184000	352677228.33379	CCD S5 on	N	N
Observation start date	2009-03-05T22:09:22	2009-03-05T21:53:48	Number of optional ACIS chips dropped	0	0
[s] Observation end time (MET)	352683228.184000	352684356.69664	On-chip summing requested	N	N
Observation end date	2009-03-05T23:32:42	2009-03-05T23:52:36	Subarray requested	NONE	NONE
Read mode	TIMED	TIMED	Alternating exposures requested	N	N
			[s] Primary exposure time	0.000000	3.2

2.3 Aspect



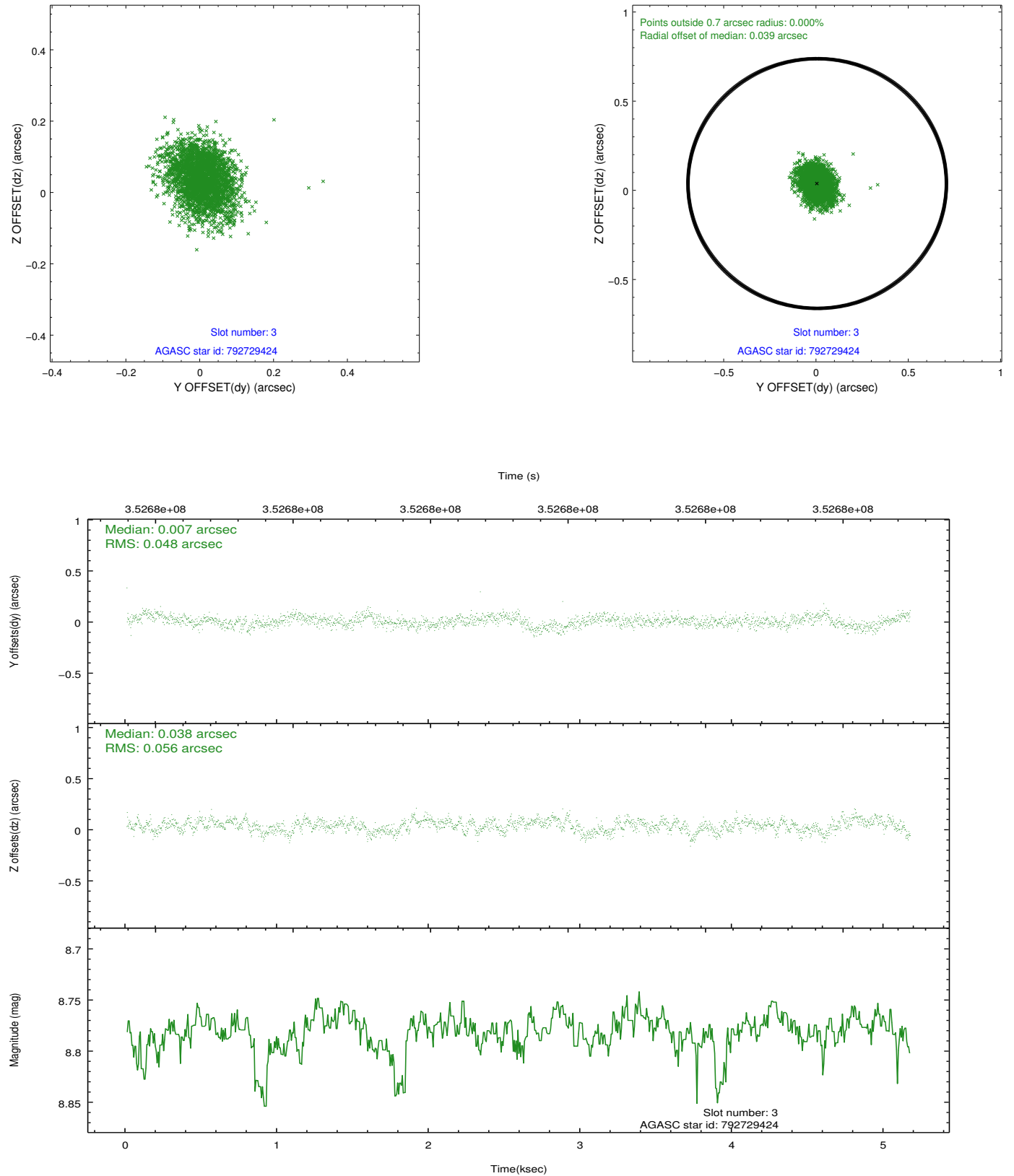


Slot Statistics

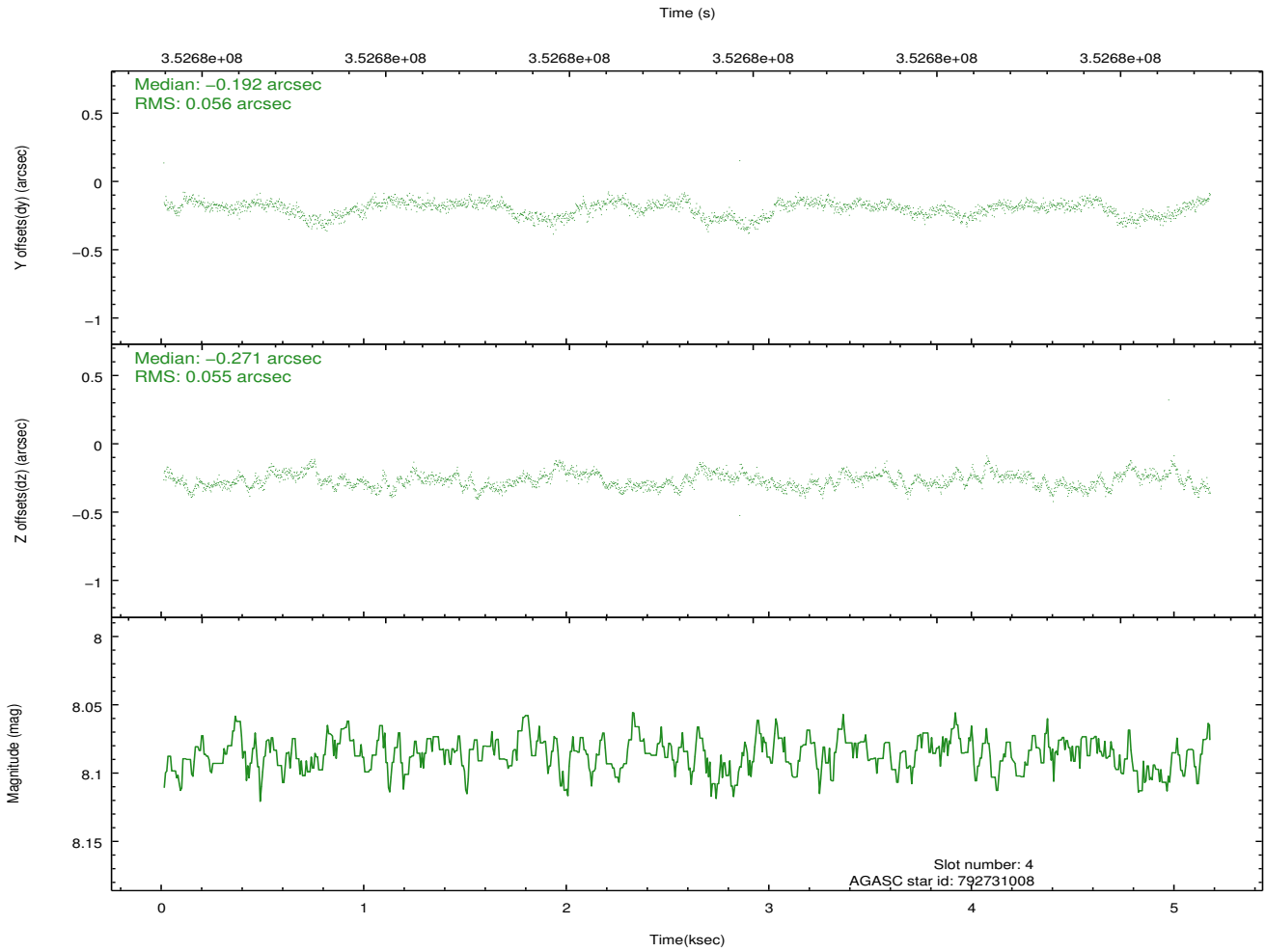
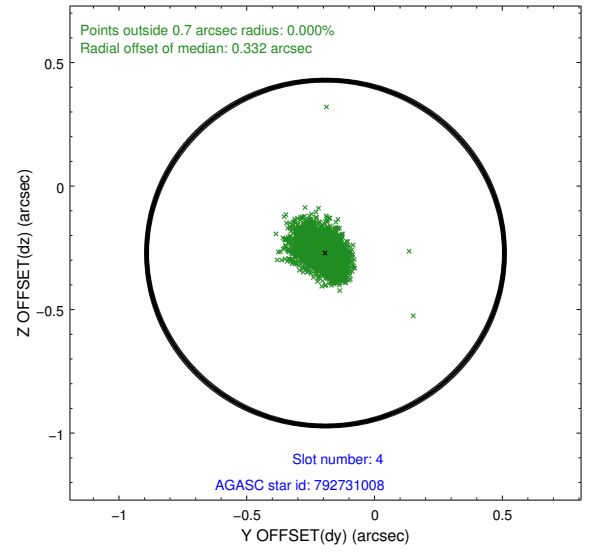
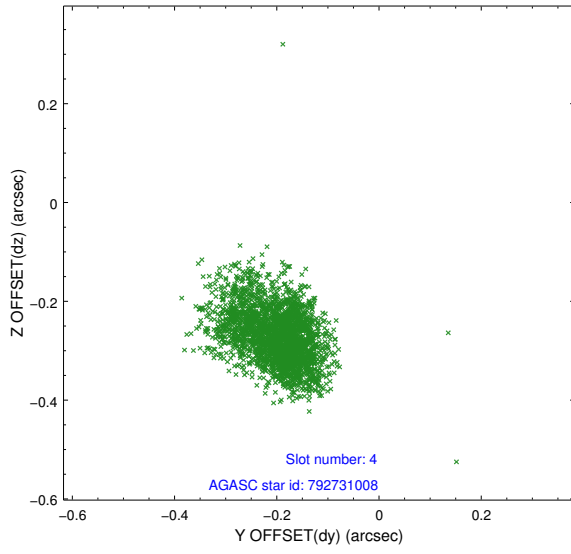
slot	status	id	mag	n_pts	med_dy	med_dz	dr1	dr2	ra	dec	mean_y	mean_z
0	FID	ACIS-I-2	6.93	1260	-0.070	-0.090	0.009	0.016	0.000000	0.000000	-767.02	-845.40
1	FID	ACIS-I-4	6.93	1261	0.171	0.069	0.008	0.015	0.000000	0.000000	2146.73	1060.36
2	FID	ACIS-I-5	6.99	1261	-0.202	0.090	0.011	0.018	0.000000	0.000000	-1819.49	1059.54
3	GUIDE	792729424	8.78	2512	0.007	0.038	0.077	0.128	146.266191	-18.141262	-723.01	470.37
4	GUIDE	792731008	8.09	2521	-0.192	-0.271	0.080	0.135	146.475233	-18.328373	258.16	435.45
5	GUIDE	792731712	9.65	2520	0.068	0.089	0.204	0.315	146.417264	-17.940591	-810.76	1354.45
6	GUIDE	792733808	7.92	2521	0.071	0.083	0.077	0.122	146.448708	-18.699968	1071.89	-629.57
7	GUIDE	792733888	8.76	2519	0.041	0.064	0.077	0.121	147.027837	-18.376690	1796.17	1546.84

2.4 Star Slots

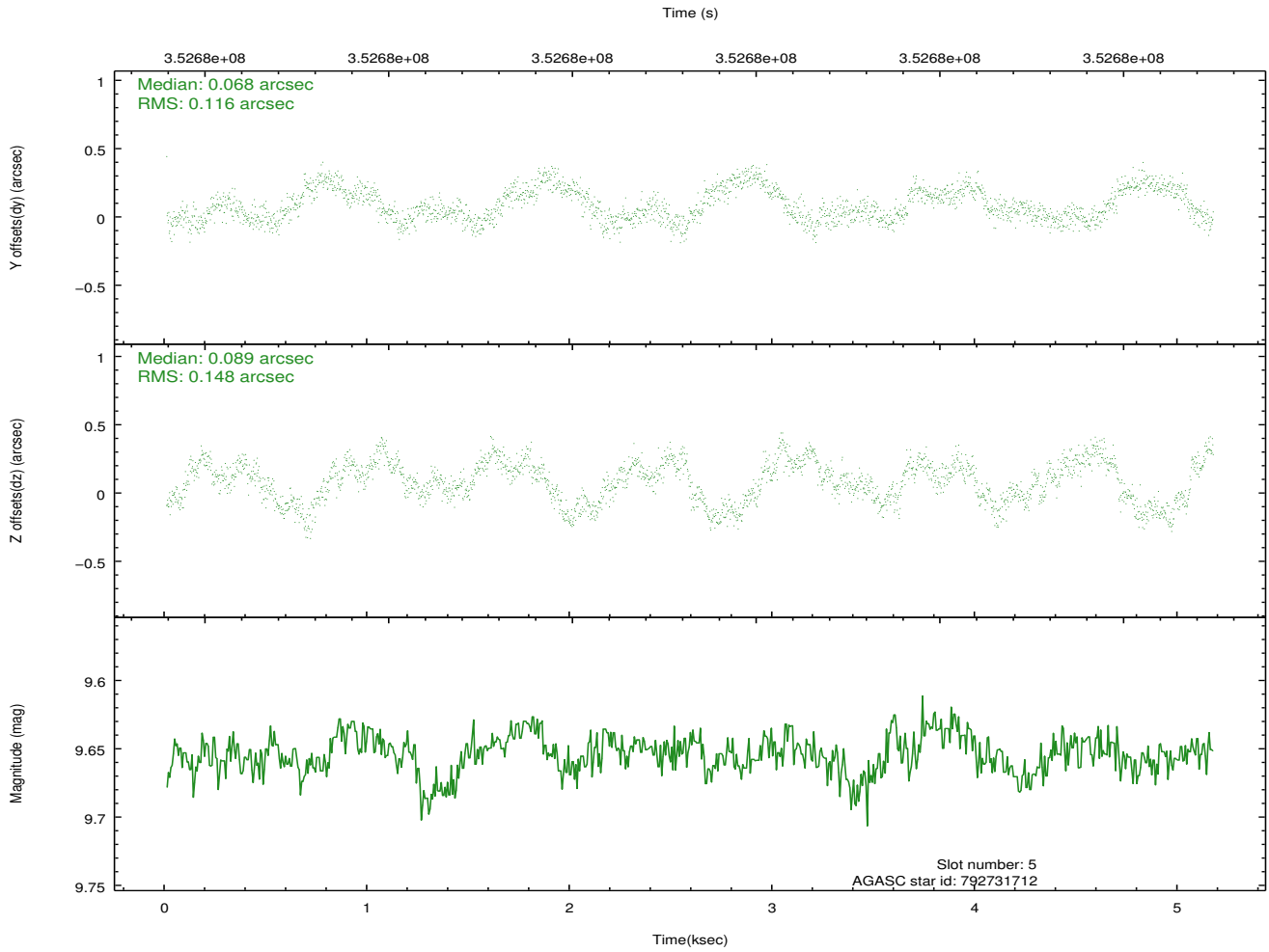
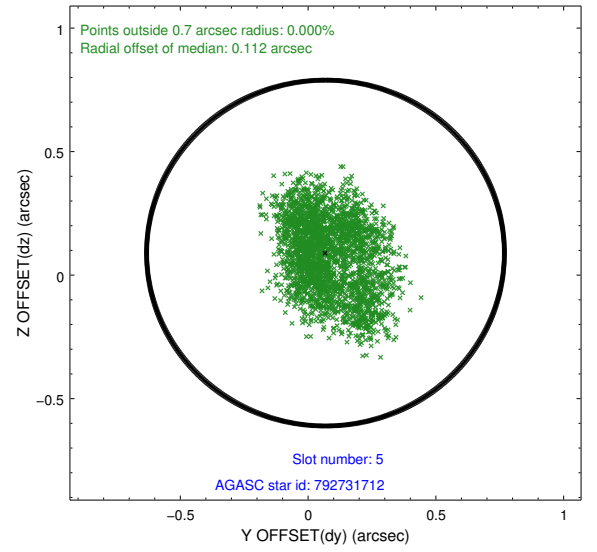
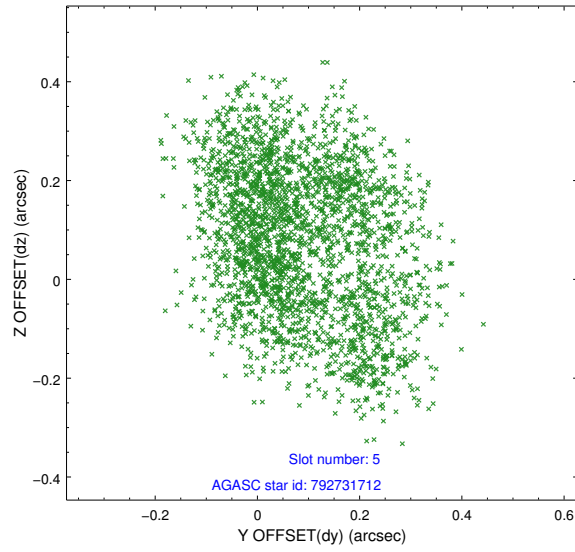
2.4.1 Slot 3



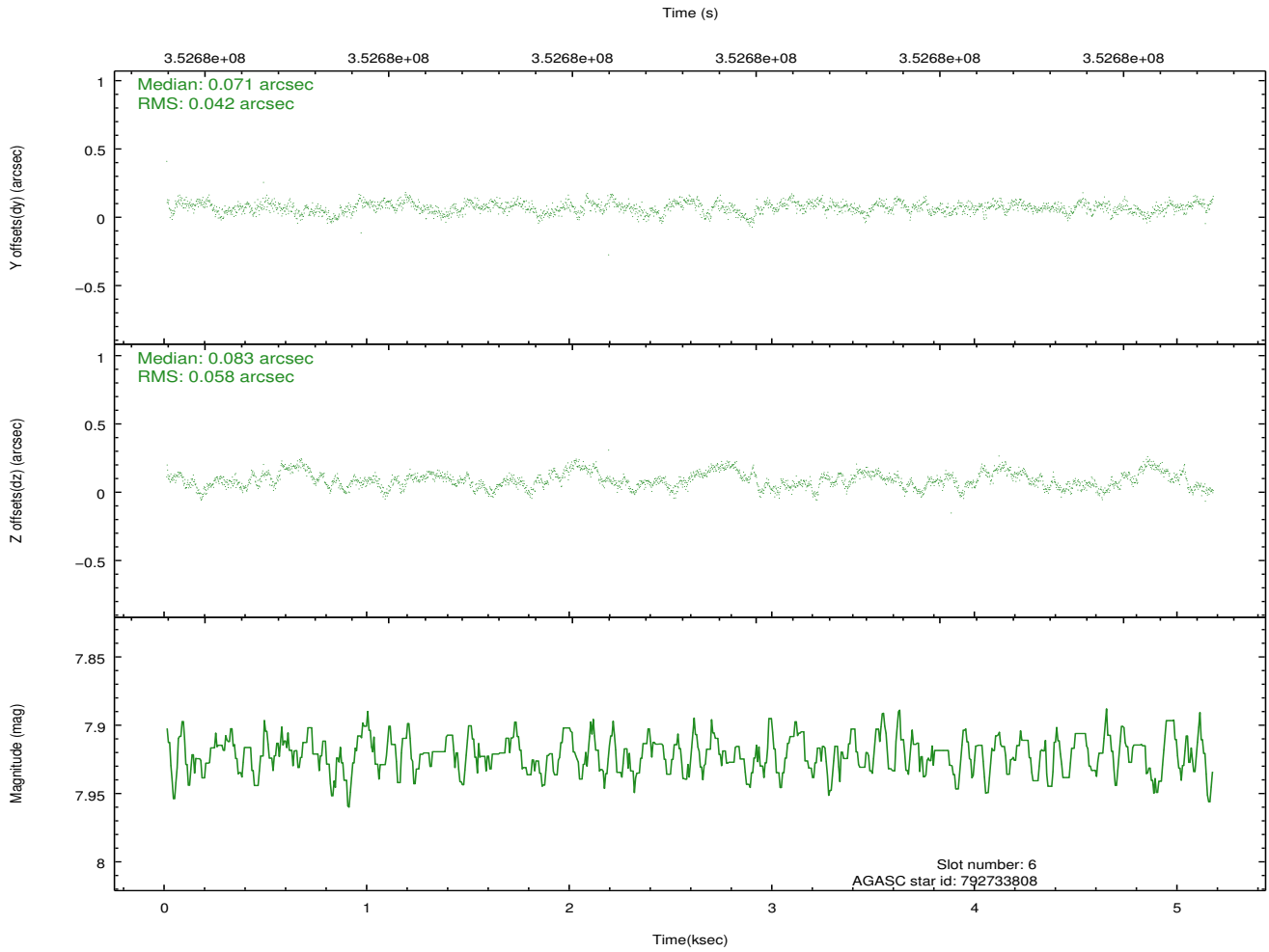
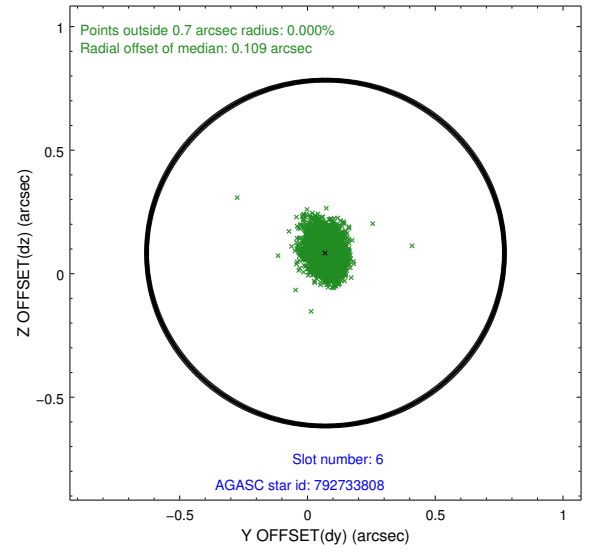
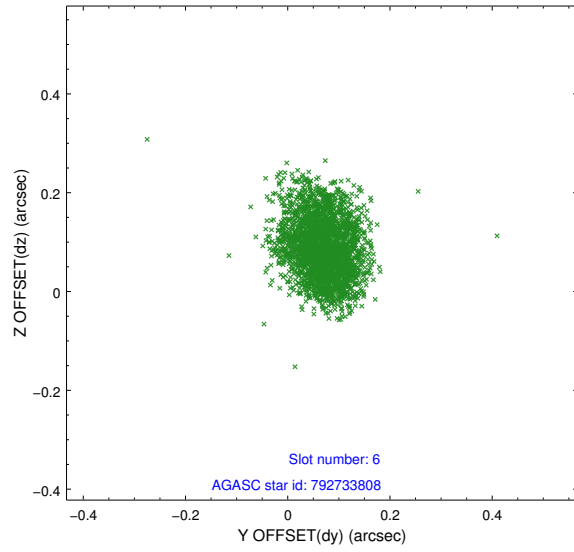
2.4.2 Slot 4



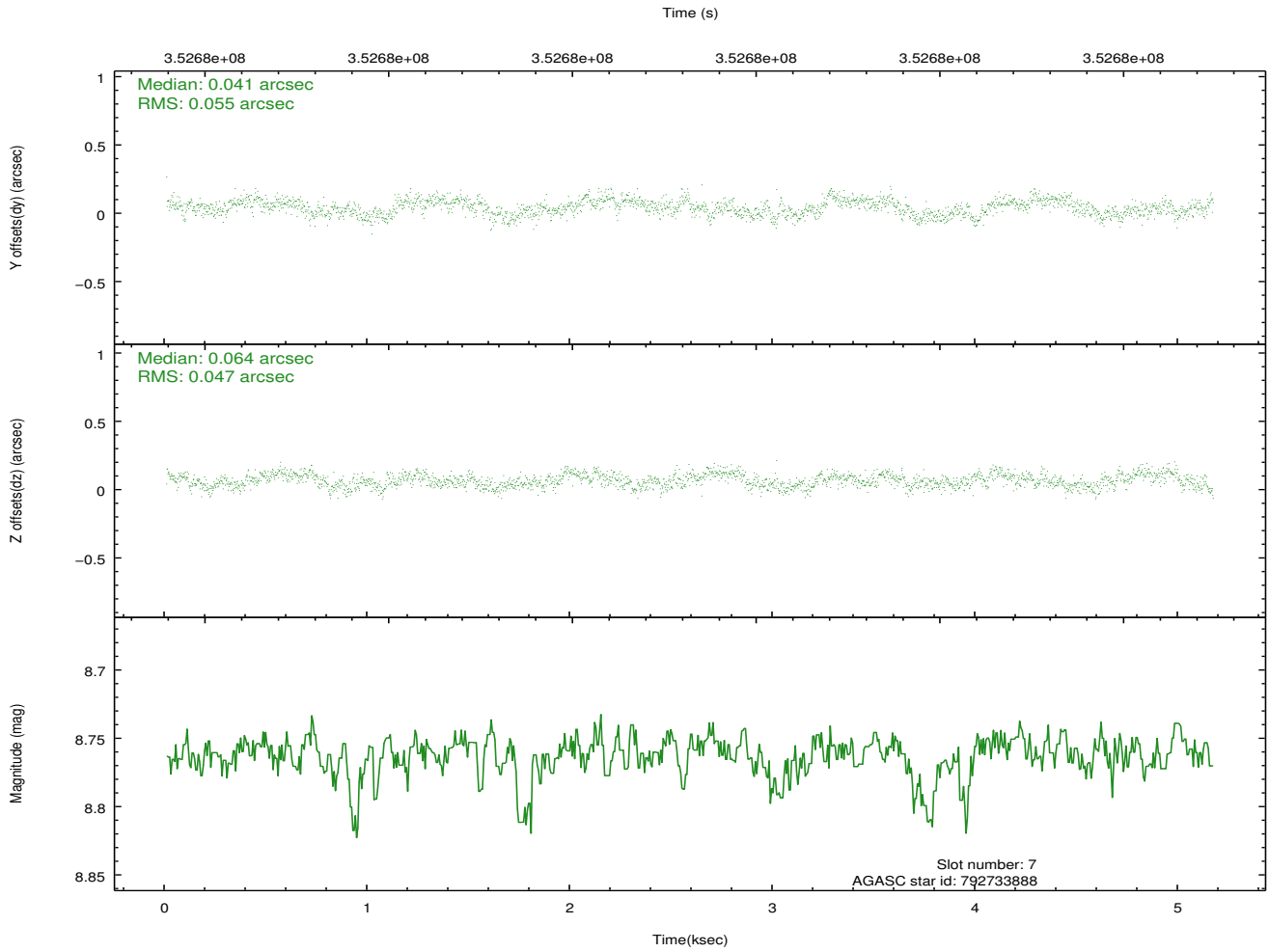
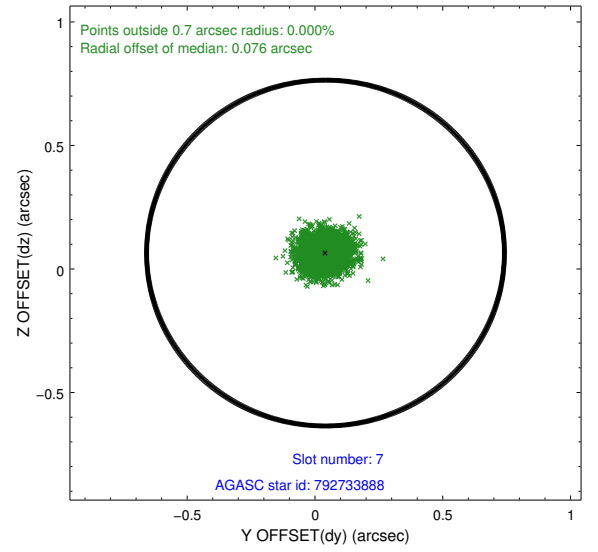
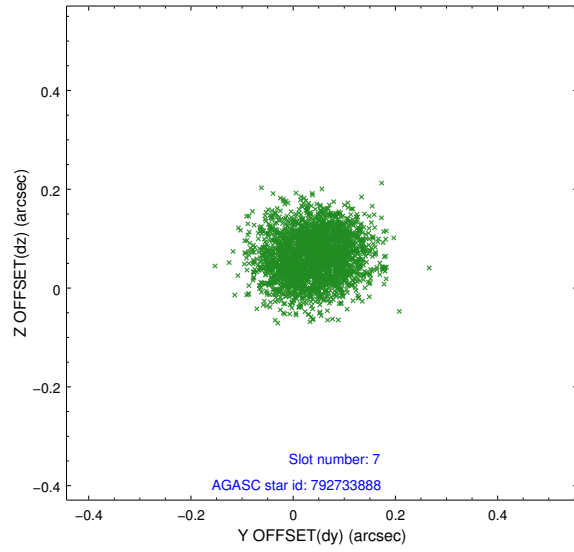
2.4.3 Slot 5



2.4.4 Slot 6

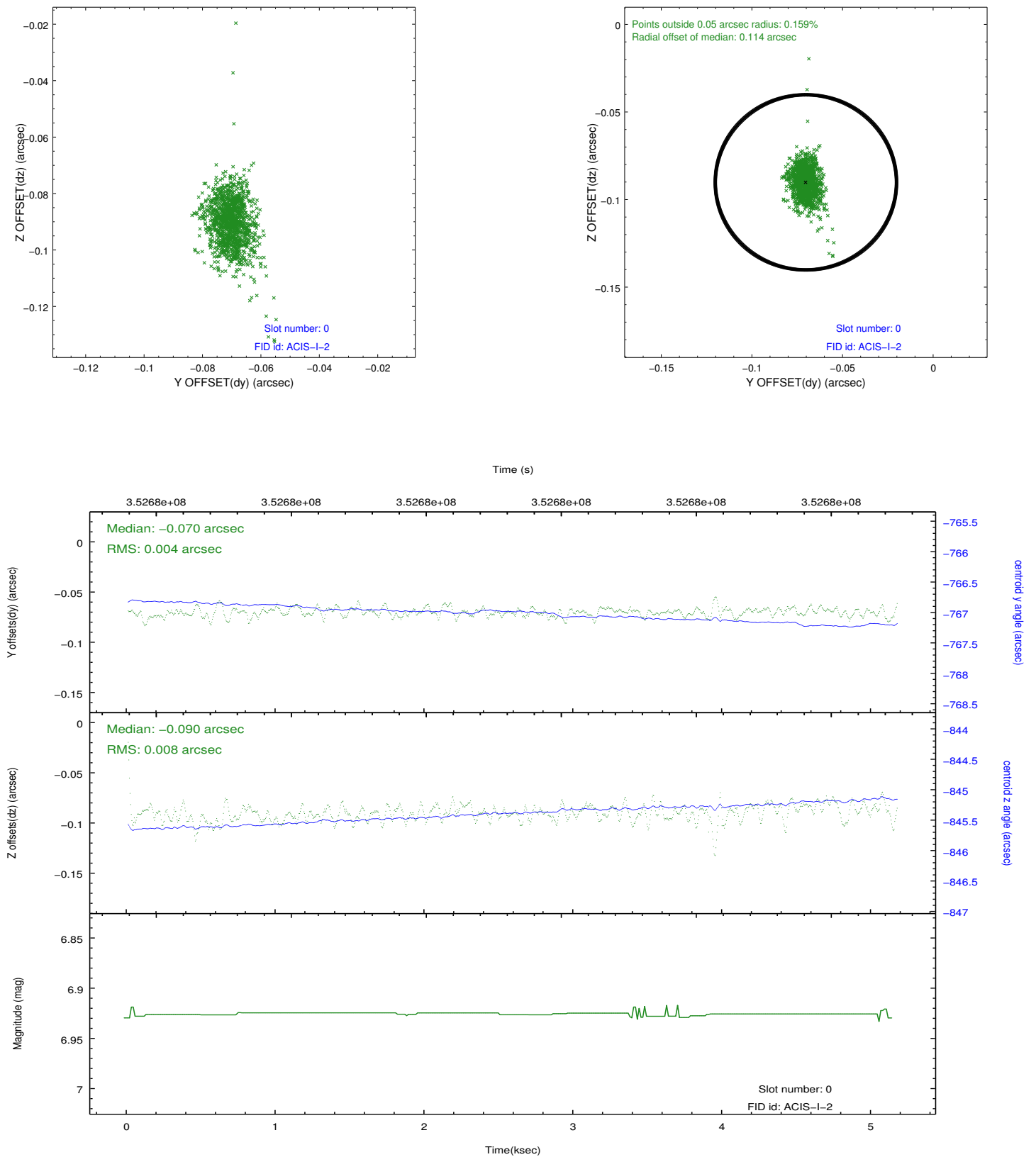


2.4.5 Slot 7

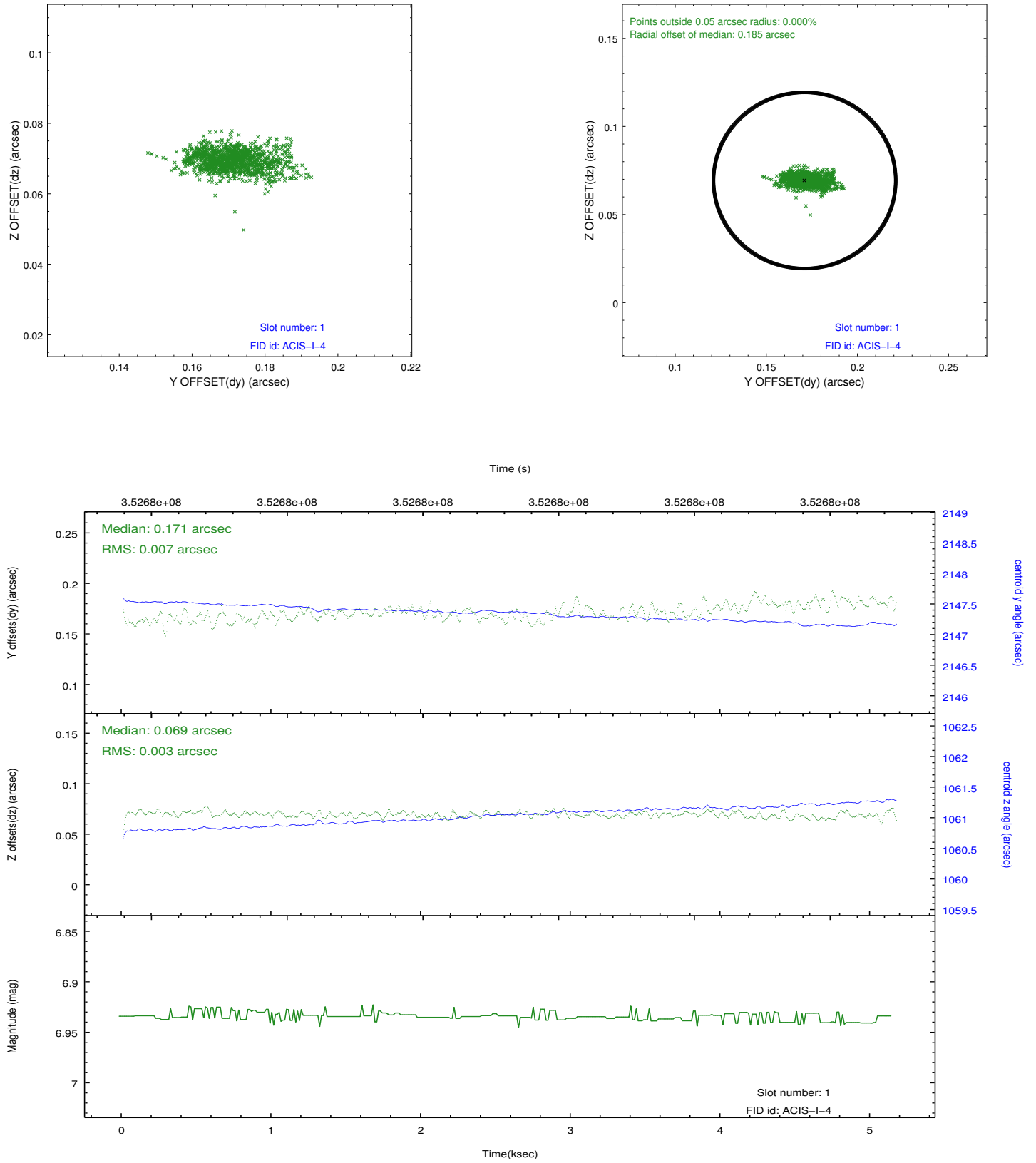


2.5 FID Slots

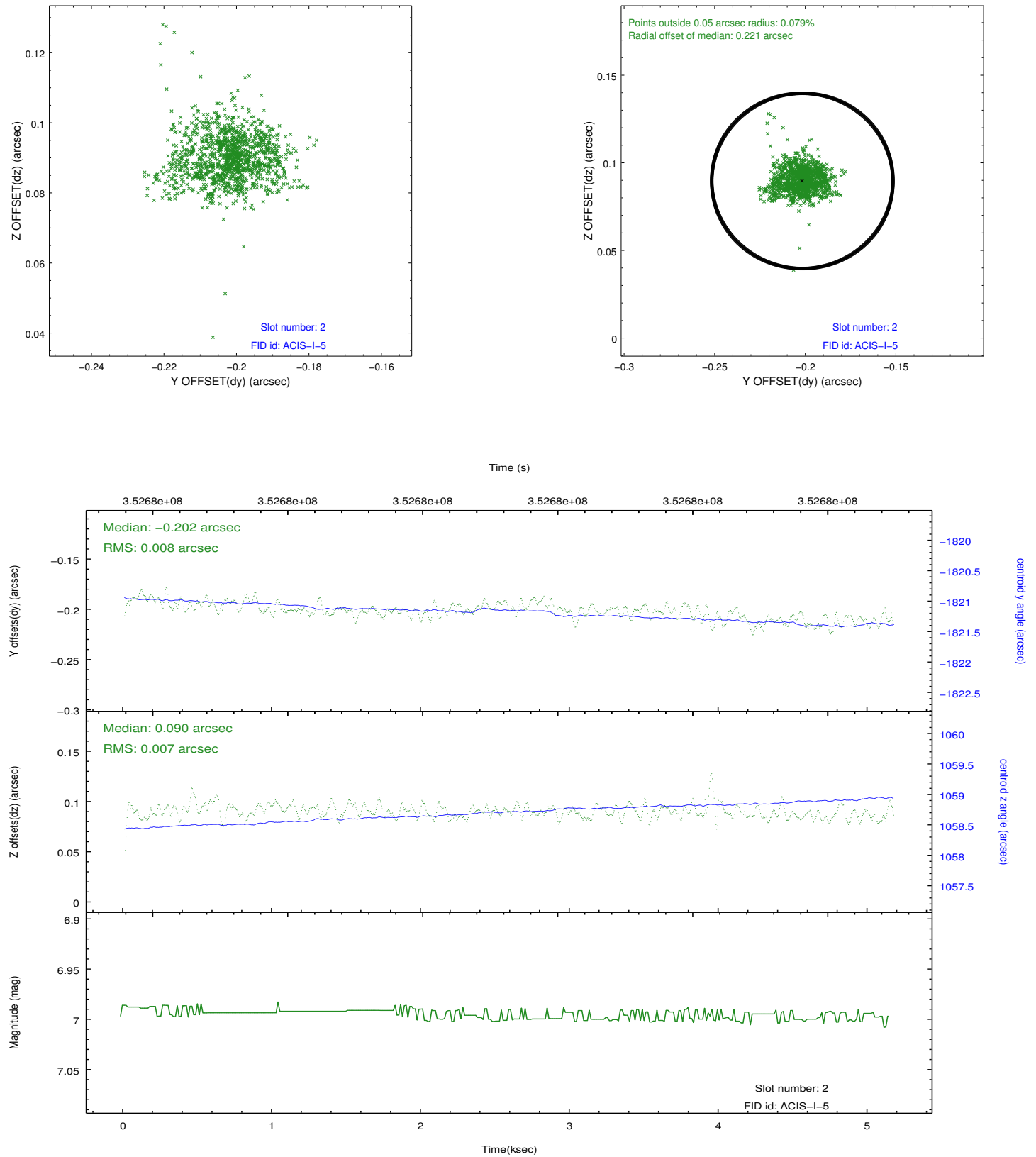
2.5.1 Slot 0



2.5.2 Slot 1



2.5.3 Slot 2



A Summary

A.1 Status

V&V Scientist	Beth Sundheim
V&V Date (YYYY-MM-DD)	2012.06.07
V&V Edition	1
V&V Disposition and Status	OK
V&V Charge Time	5.02719998

A.2 Comments