

# V&V Reference Report

## L2 ASCDS Version : 8.4.4

Observation 10025 - L2 Version 2  
Chandra X-Ray Center

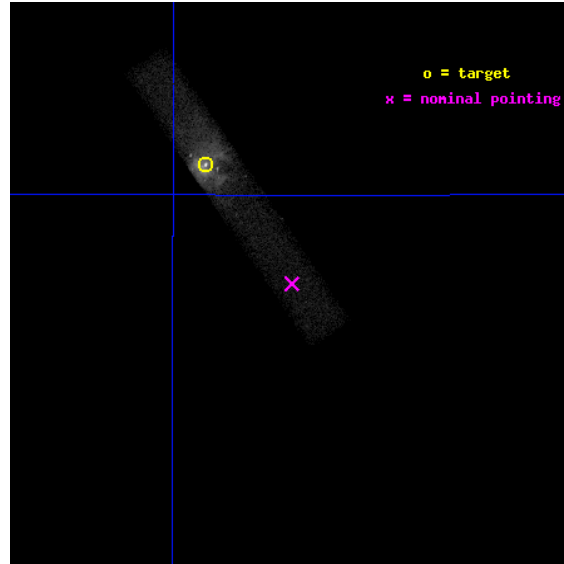
L2 Processing Date : Jun 4 2012

## Contents

<b>1</b>	<b>Front</b>	<b>2</b>
<b>2</b>	<b>OBI</b>	<b>3</b>
2.1	OBI . . . . .	3
2.1.1	Images . . . . .	3
2.1.2	Bias . . . . .	3
2.1.3	Parameters . . . . .	4
2.1.4	Events . . . . .	4
2.2	Compared Parameters . . . . .	5
2.3	Aspect . . . . .	6
2.4	Star Slots . . . . .	9
2.4.1	Slot 3 . . . . .	9
2.4.2	Slot 4 . . . . .	10
2.4.3	Slot 5 . . . . .	11
2.4.4	Slot 6 . . . . .	12
2.4.5	Slot 7 . . . . .	13
2.5	FID Slots . . . . .	14
2.5.1	Slot 0 . . . . .	14
2.5.2	Slot 1 . . . . .	15
2.5.3	Slot 2 . . . . .	16
<b>A</b>	<b>Summary</b>	<b>17</b>
A.1	Status . . . . .	17
A.2	Comments . . . . .	17

# 1 Front

seq_num	400989	Sequence number
obs_id	10025	Observation id
title	Weighing the ULX in M82 via QPO-Spectral Correlations from Simultaneous Chandra and XMM-Newton Observations	Proposal title
observer	Prof. Hua Feng	Principal investigator
object	M82 ULX	Source name
dtcycle	0	&#160
cycle	P	events from which exps? Prim/Second/Both
ra_targ	148.959167	Observer's specified target RA [deg]
dec_targ	69.679722	Observer's specified target Dec [deg]
ra_nom	148.85081834523	Nominal RA [deg]
dec_nom	69.628417460497	Nominal Dec [deg]
roll_nom	235.36993217403	Nominal Roll [deg]
revision	2	Processing version of data
ontime	19181.198856711	Sum of GTIs [s]
livetime	17396.334896346	Livetime [s]
ontime7	19181.198856711	Sum of GTIs [s]
l2events	78900	Number of level 2 events

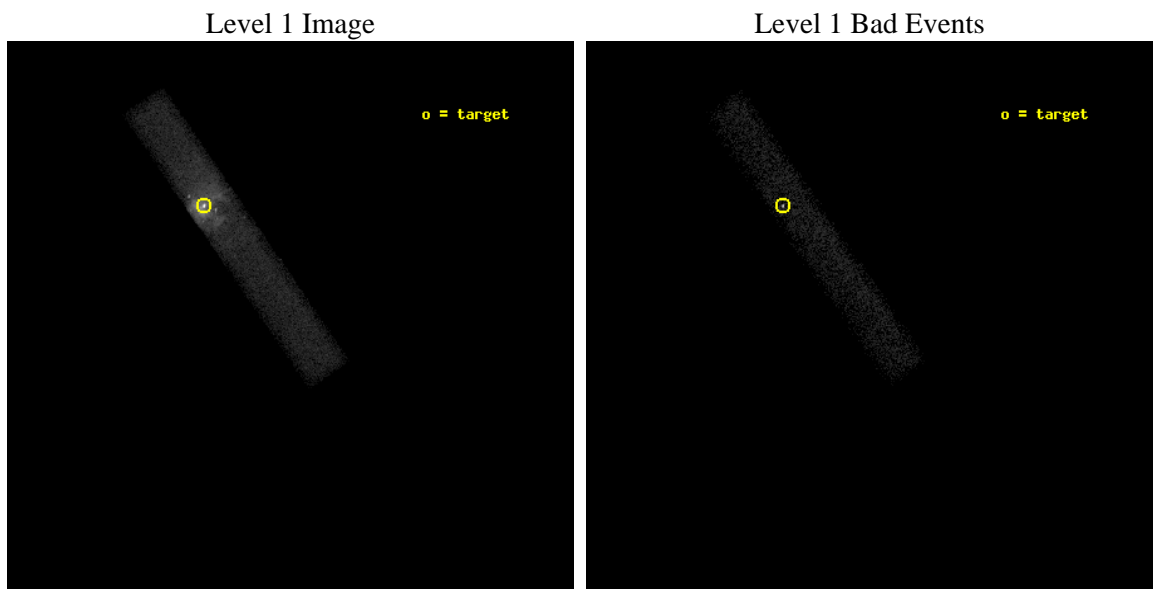




## 2 OBI

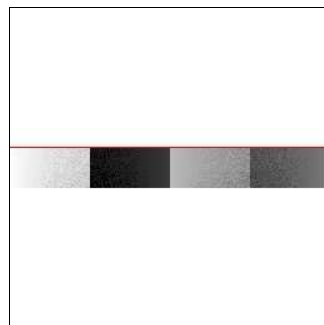
### 2.1 OBI

#### 2.1.1 Images



#### 2.1.2 Bias

Chip 7



### 2.1.3 Parameters

obi_num	0	Obi number	sched_exp_time	19000.000000	[s] Scheduled observation exposure time
ascdsver	8.4.4	Processing system revision	ontime	19181.198856711	Sum of GTIs [s]
caldsver	4.4.9	&#160	ontime7	19181.198856711	Sum of GTIs [s]
date	2012-06-04T15:10:30	Date and time of file creation	l1events	104974	Number of level 1 events
revision	2	Processing version of data			

### 2.1.4 Events

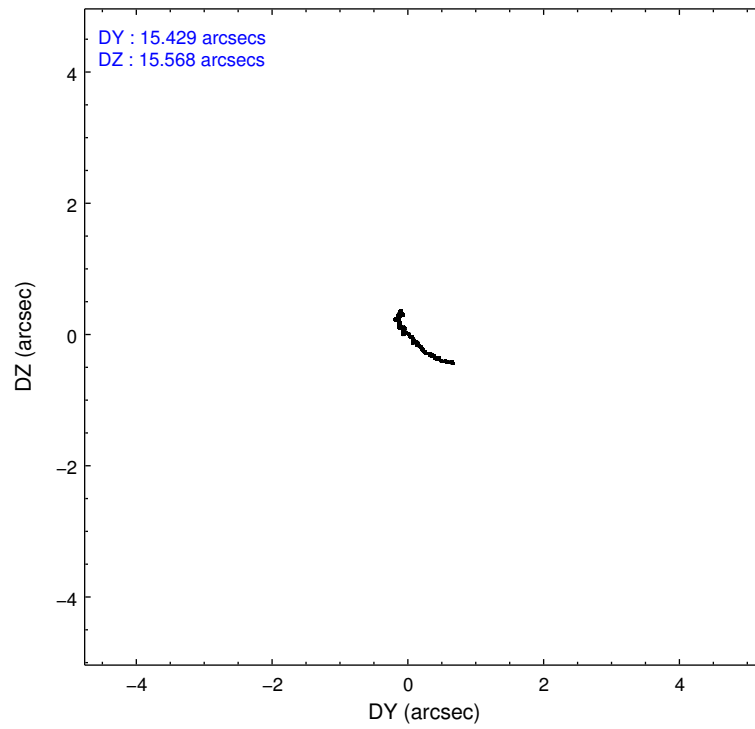
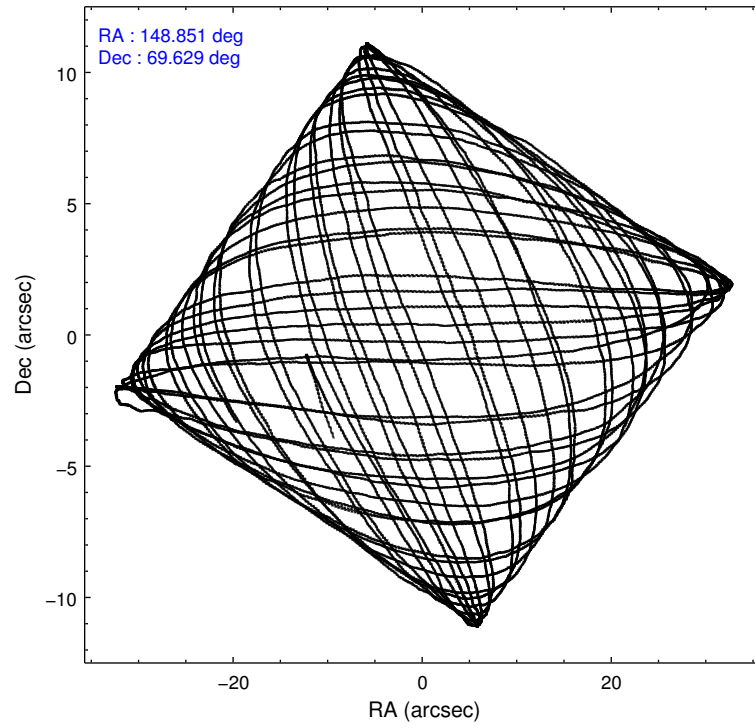
	<b>ccd 7</b>
level 1 events	104974
rejected events	25293
rejected %	24%

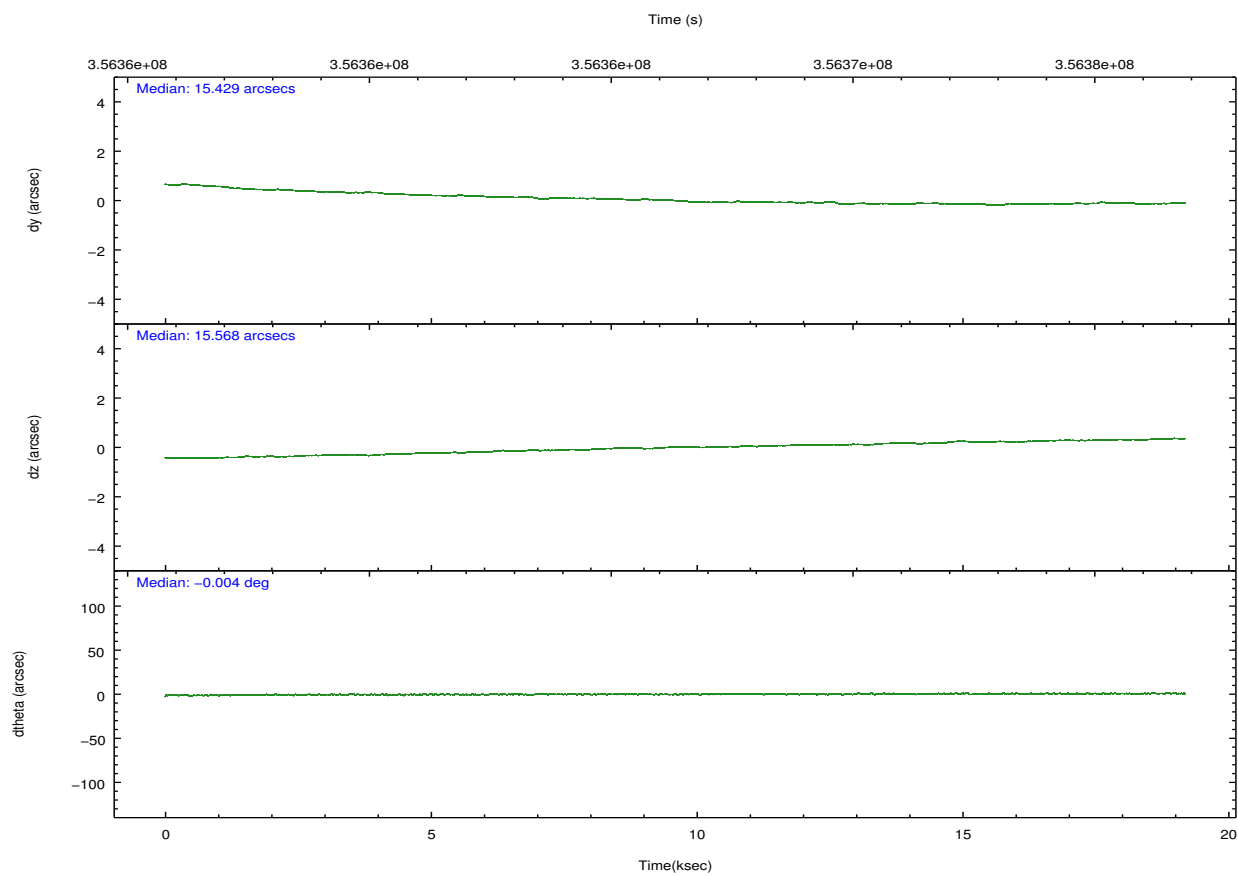
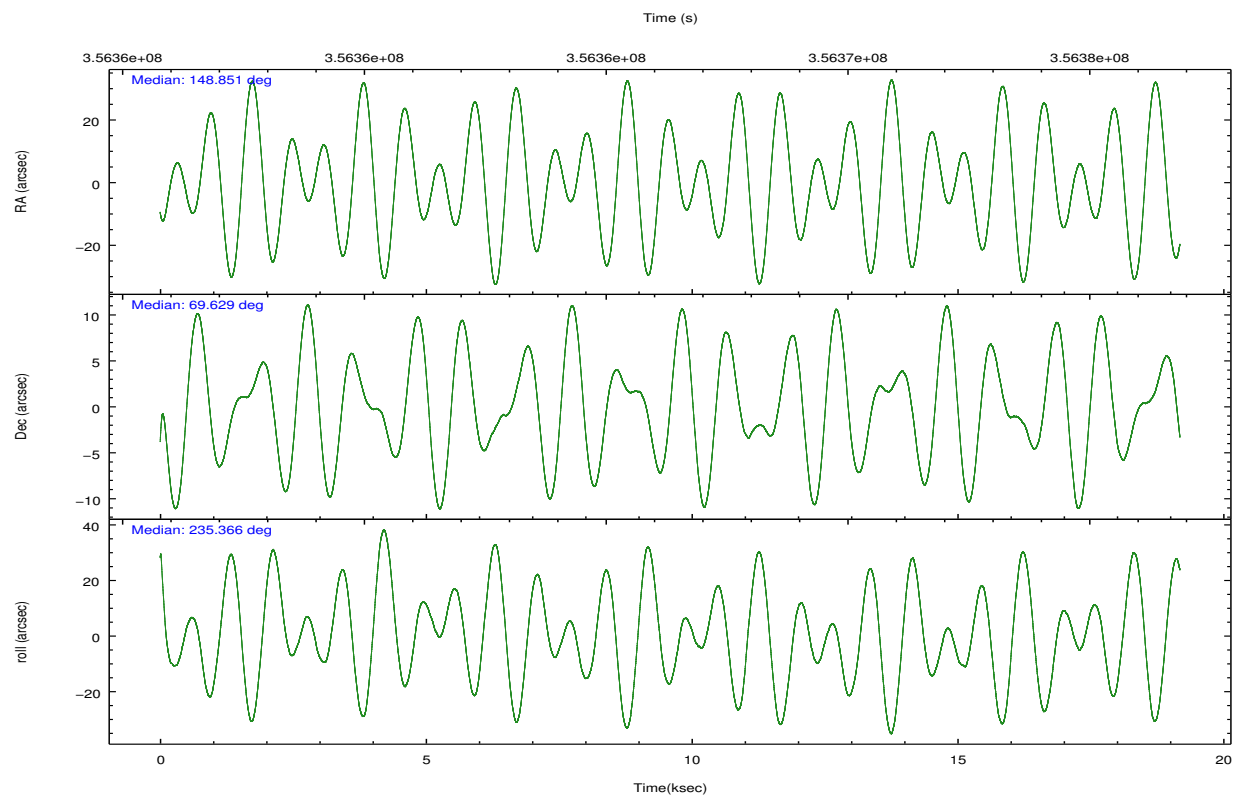
	<b>ccd 7</b>
grade 0 events	19113
	18%
grade 1 events	484
	0%
grade 2 events	19824
	18%
grade 3 events	9683
	9%
grade 4 events	9390
	8%
grade 5 events	5088
	4%
grade 6 events	22904
	21%
grade 7 events	18488
	17%

## 2.2 Compared Parameters

Parameter	Planned	Actual	Parameter	Planned	Actual
Instrument	ACIS	ACIS	Obspar format version number	7	7
Detector	ACIS-7	ACIS-7	Obspar file type	PREDICTED	ACTUAL
Grating	NONE	NONE	Obspar update status	NONE	UPDATED
Data mode	FAINT	FAINT	Number of optional ACIS chips dropped	0	0
Observation mode	POINTING	POINTING	On-chip summing requested	N	N
[deg] Pointing RA	148.856128	148.8508183452268	Subarray requested	CUSTOM	1/8
[deg] Pointing Dec	69.655705	69.62841746049713	Subarray start row	449	449
[deg] Pointing Roll	235.208308	235.3699321740286	Subarray row count	128	128
[mm] SIM focus pos	-0.684267	-0.6828225247311905	Alternating exposures requested	N	N
[mm] SIM defocus	0	0.001444936568705701	[s] Primary exposure time	0.000000	0.4
[mm] SIM translation stage pos	-190.132523	-190.1425803651734			
[mm] SIM translation stage offset	0	0.01005778216563158			
[s] Observation start time (MET)	356356910.184000	356355745.95417			
Observation start date	2009-04-17T12:00:44	2009-04-17T11:42:25			
[s] Observation end time (MET)	356375910.184000	356376560.63021			
Observation end date	2009-04-17T17:17:24	2009-04-17T17:29:20			
Read mode	TIMED	TIMED			

## 2.3 Aspect



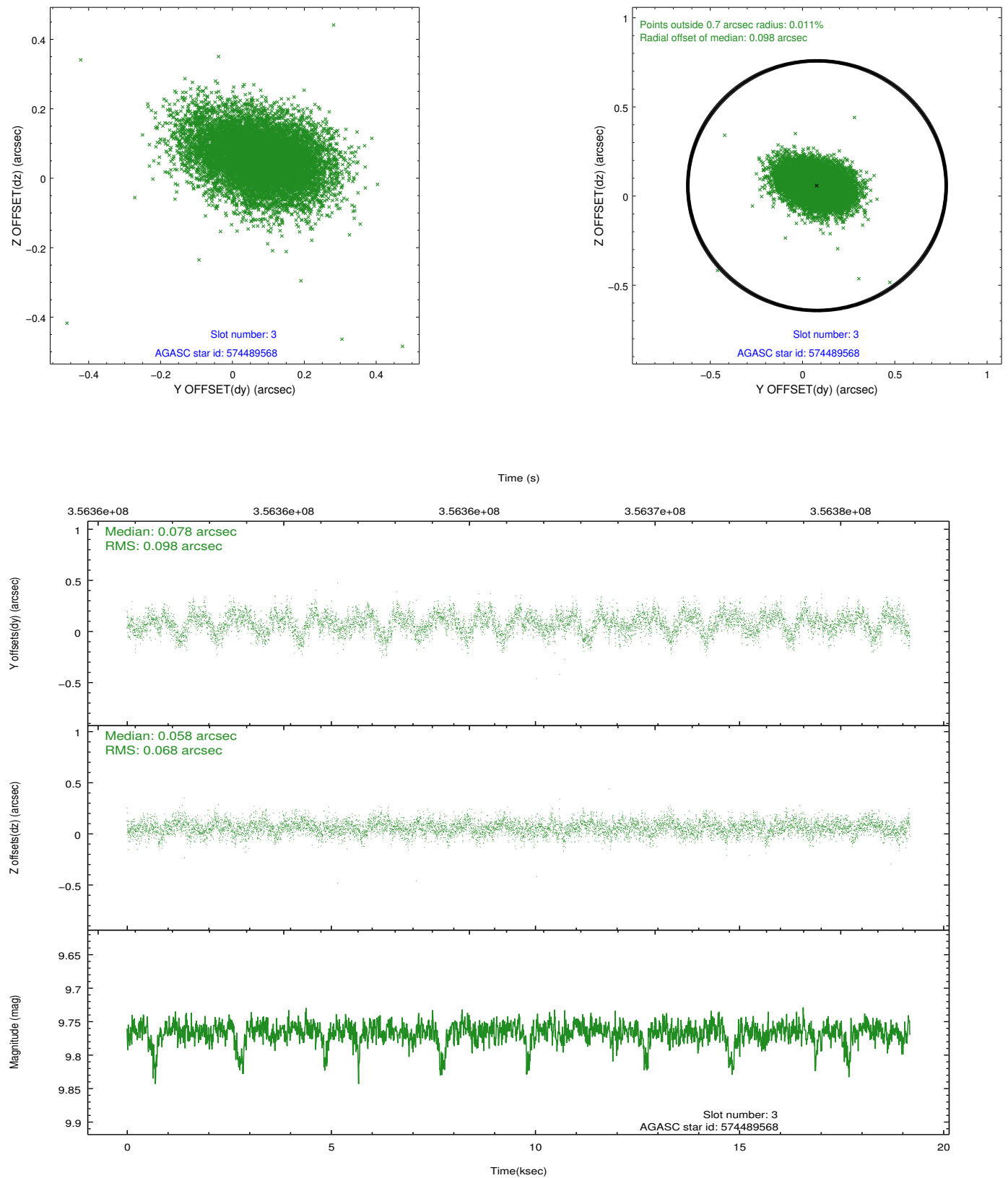


### Slot Statistics

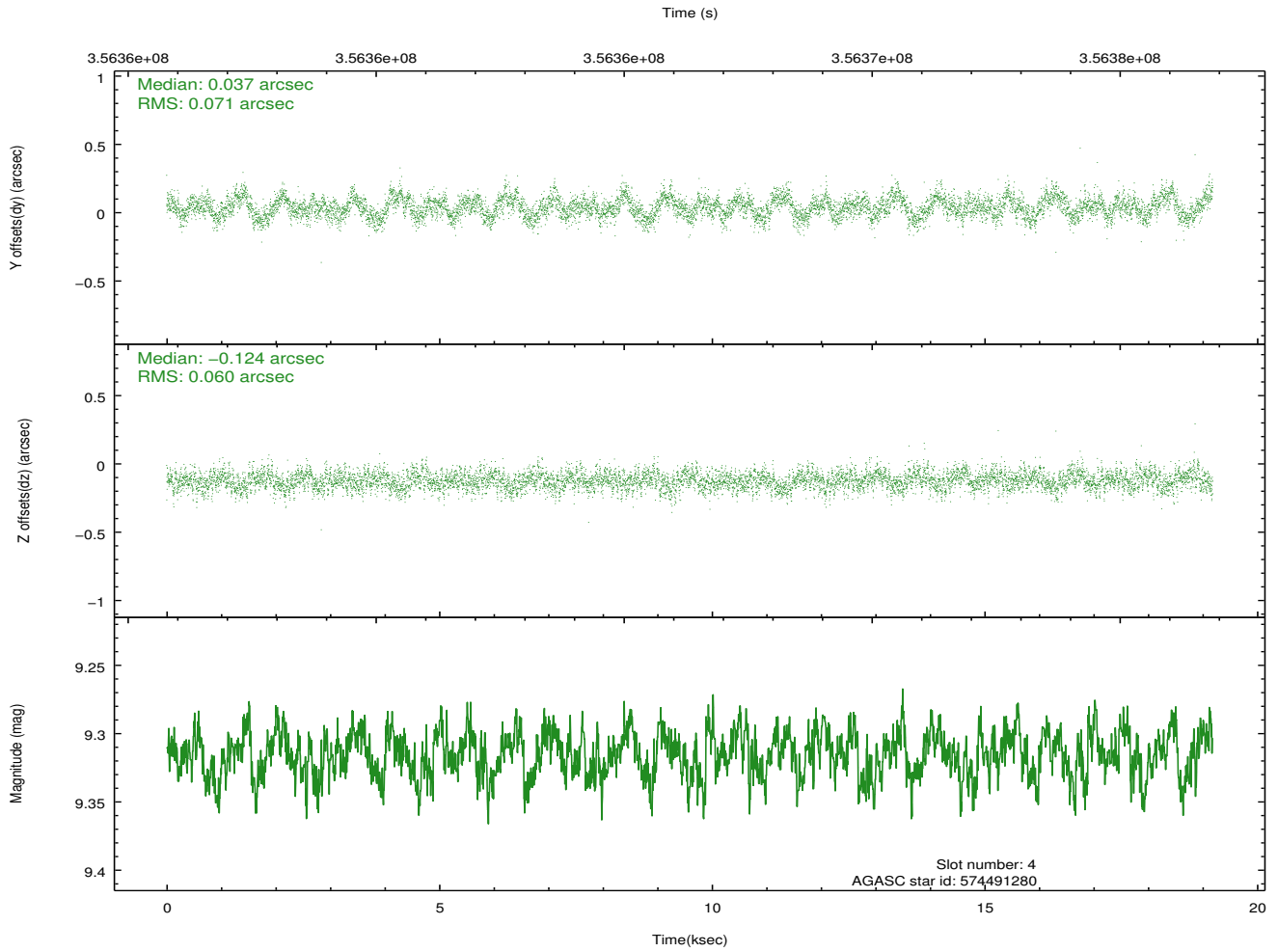
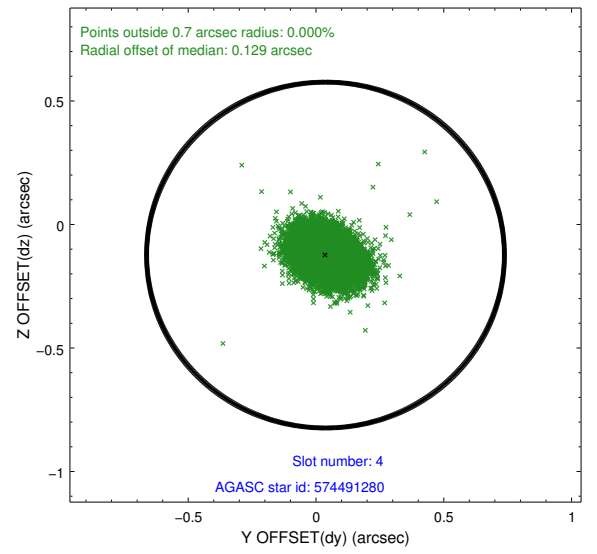
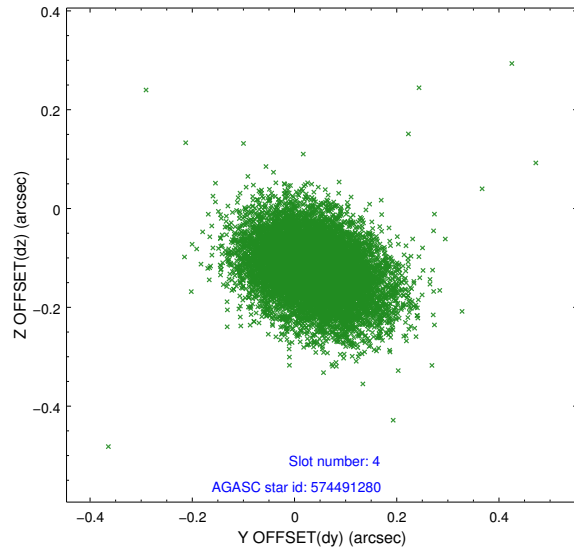
slot	status	id	mag	n_pts	med_dy	med_dz	dr1	dr2	ra	dec	mean_y	mean_z
0	FID	ACIS-S-2	6.92	4679	-0.101	-0.007	0.010	0.016	0.000000	0.000000	-768.58	-1736.89
1	FID	ACIS-S-4	7.01	4679	0.186	0.051	0.013	0.022	0.000000	0.000000	2144.88	171.45
2	FID	ACIS-S-5	7.04	4679	-0.116	-0.035	0.014	0.022	0.000000	0.000000	-1821.20	165.25
3	GUIDE	574489568	9.77	9341	0.078	0.058	0.125	0.211	147.223974	69.438157	1798.39	-1262.83
4	GUIDE	574491280	9.31	9350	0.037	-0.124	0.098	0.160	148.611567	69.450135	785.49	167.91
5	GUIDE	574491872	9.25	9290	-0.030	0.001	0.085	0.137	147.207613	69.765453	826.97	-1924.77
6	GUIDE	574886496	8.50	9353	-0.113	-0.036	0.081	0.128	148.945563	70.041136	-1202.10	-701.62
7	GUIDE	574491184	9.08	9349	0.028	0.095	0.099	0.153	148.582453	69.768699	-140.08	-511.92

## 2.4 Star Slots

### 2.4.1 Slot 3

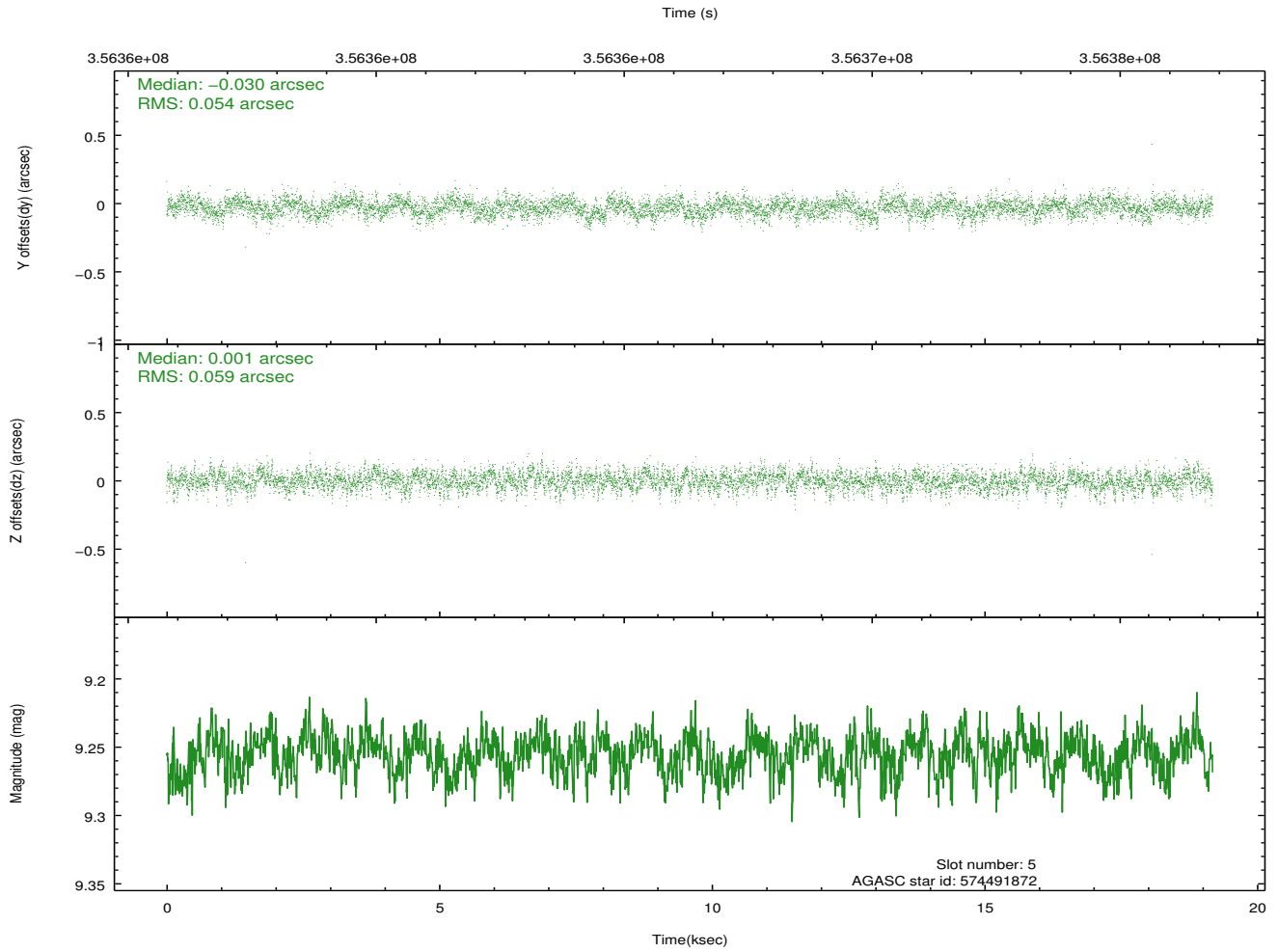
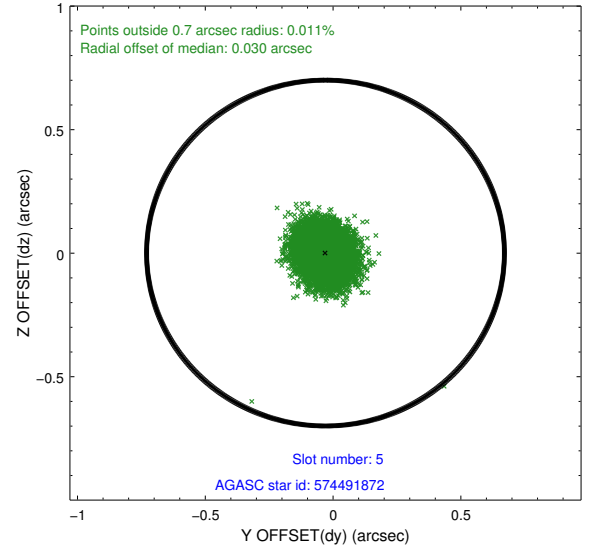
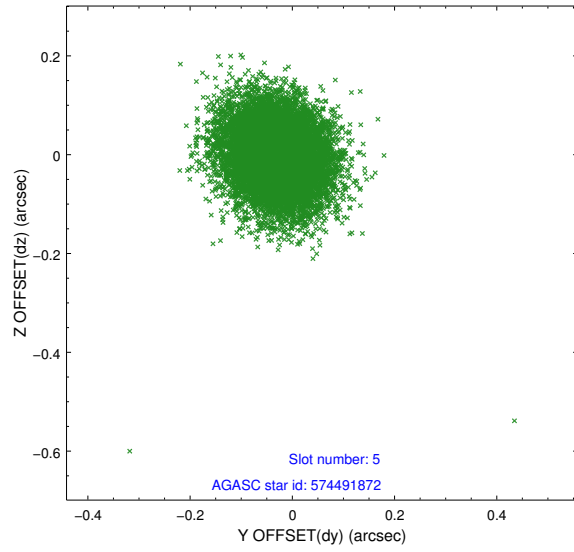


## 2.4.2 Slot 4

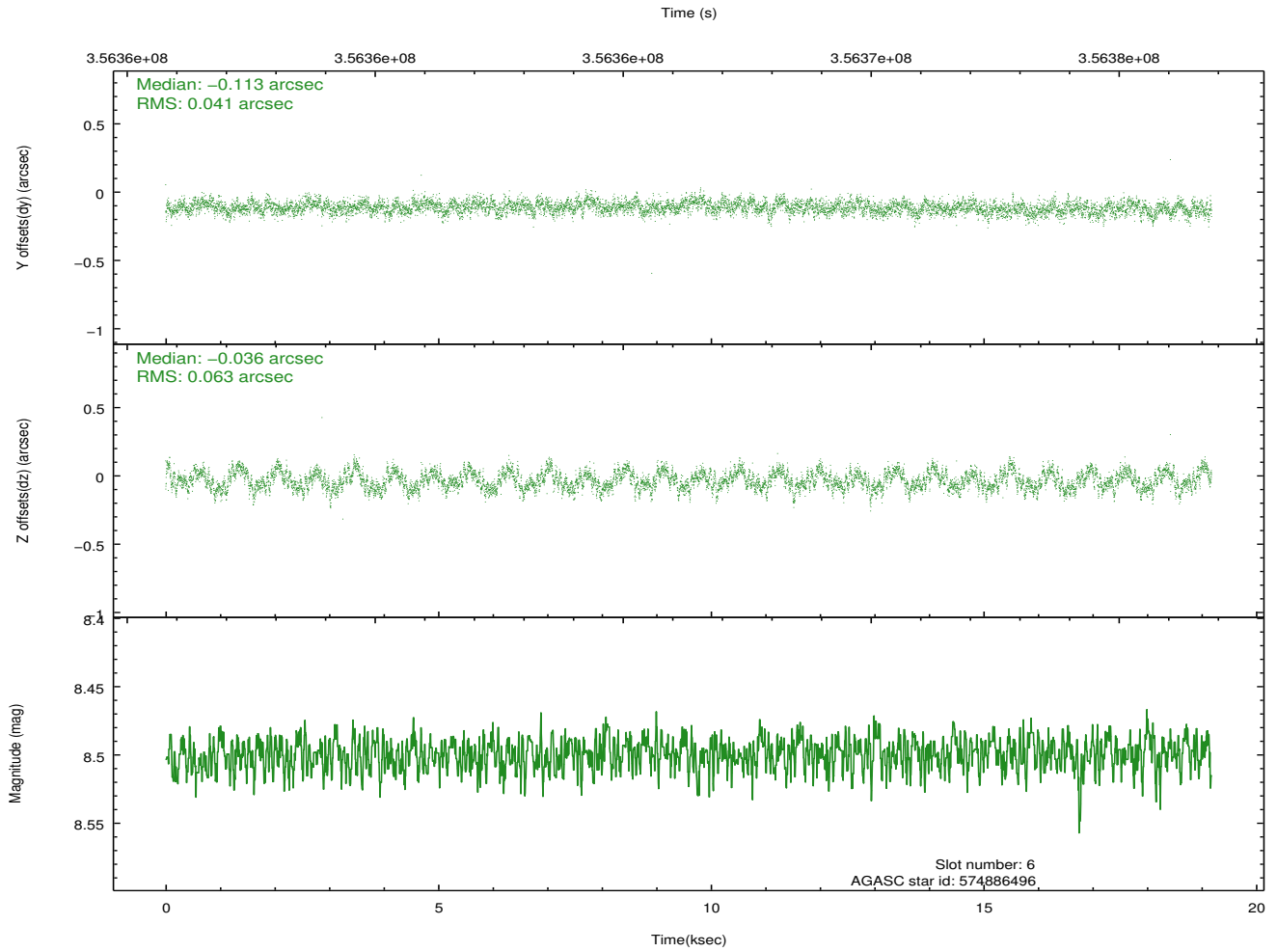
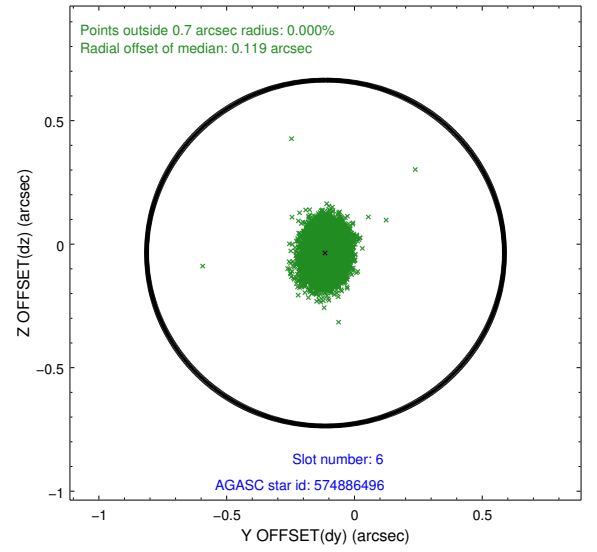
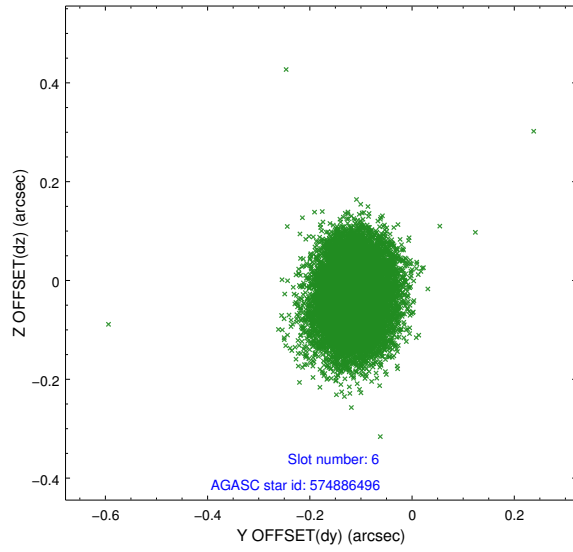




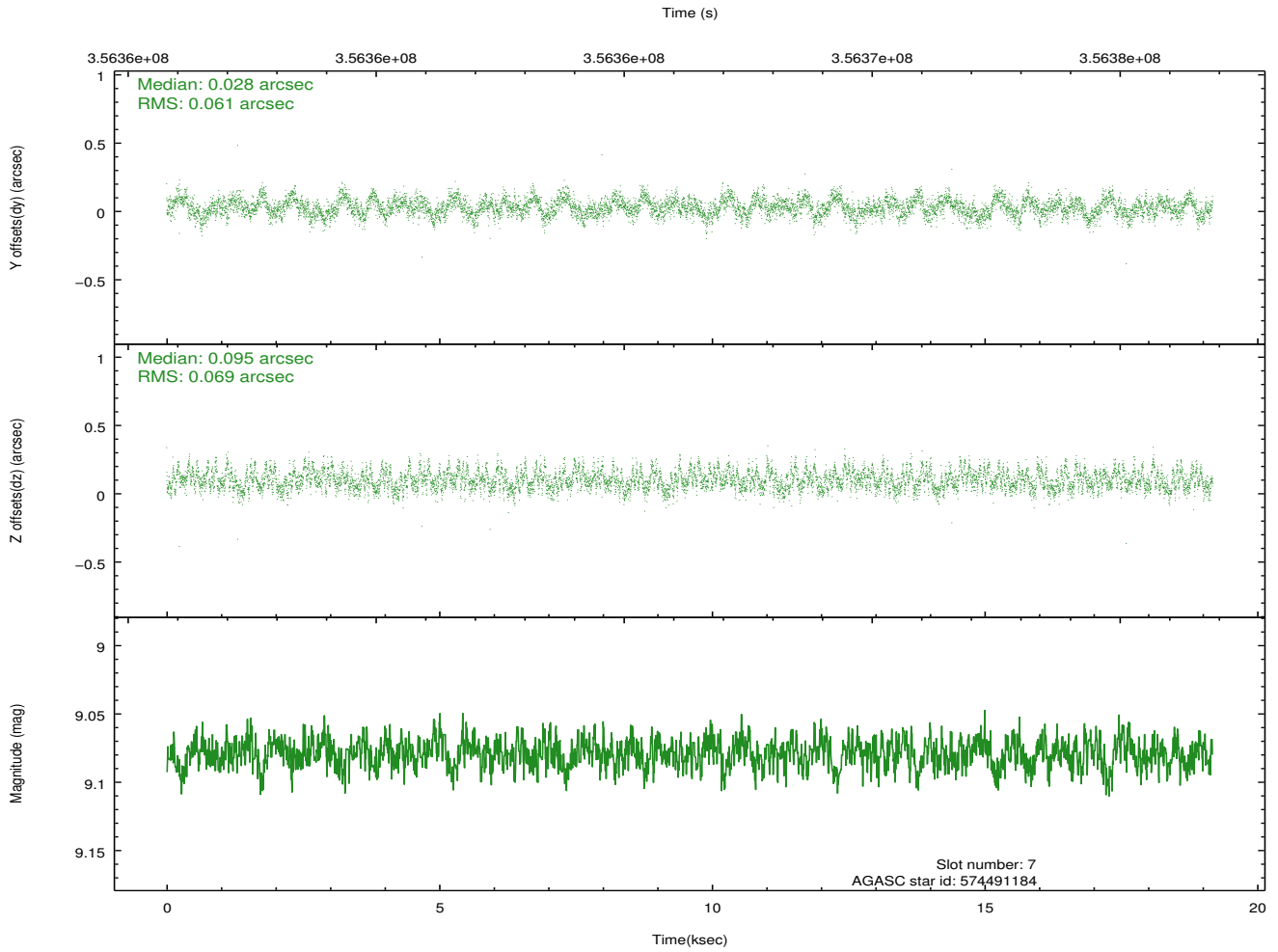
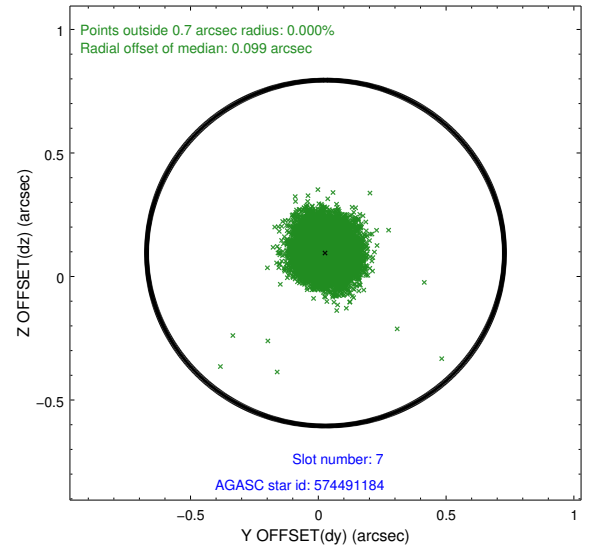
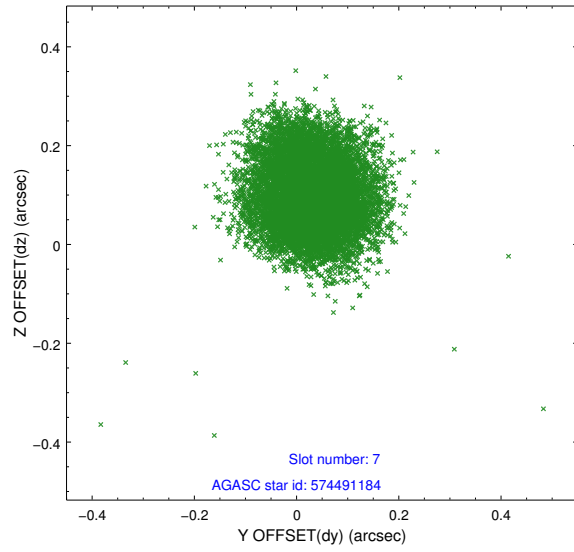
### 2.4.3 Slot 5



## 2.4.4 Slot 6

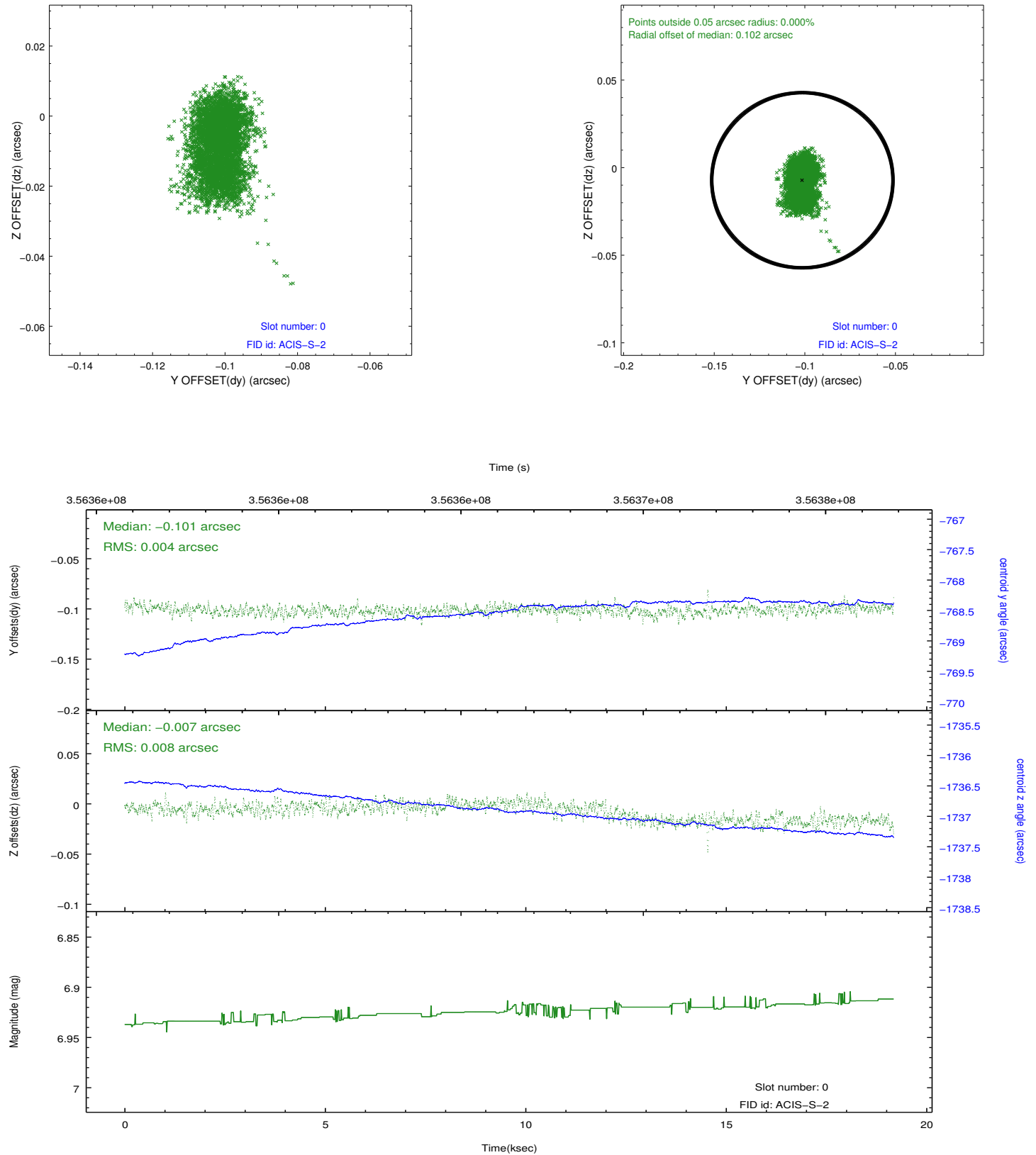


## 2.4.5 Slot 7

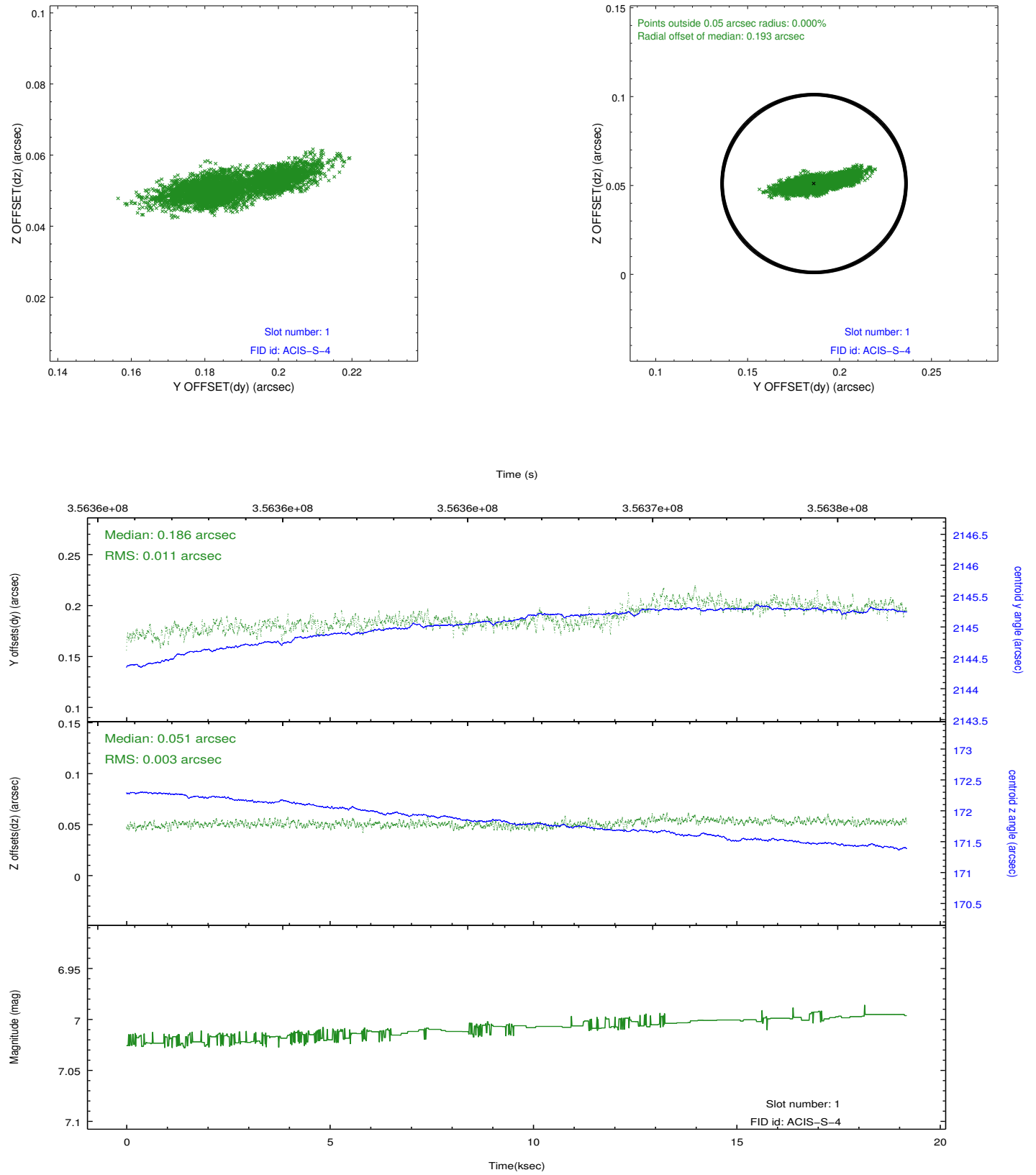


## 2.5 FID Slots

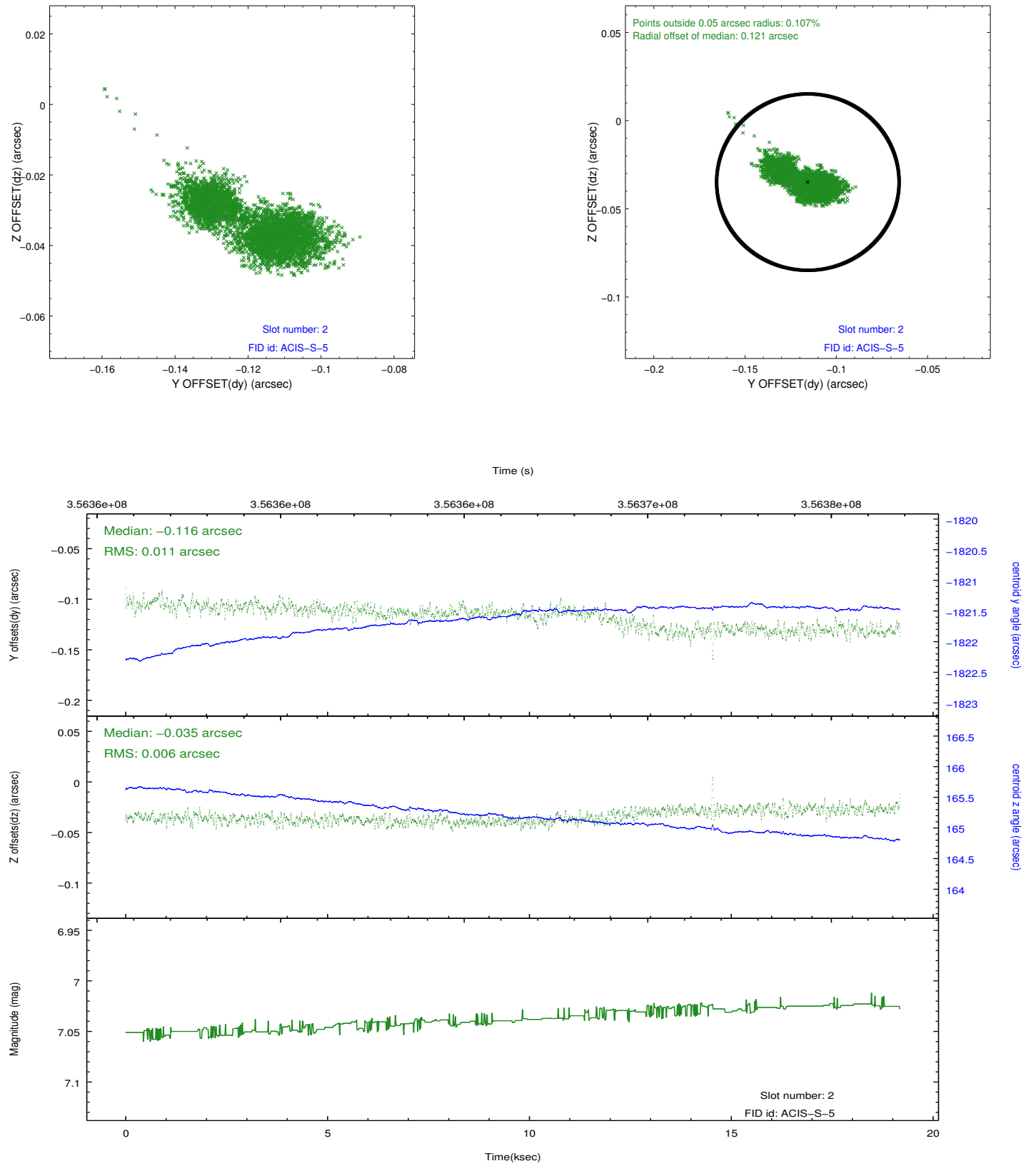
### 2.5.1 Slot 0



## 2.5.2 Slot 1



### 2.5.3 Slot 2



## A Summary

### A.1 Status

V&V Scientist	Beth Sundheim
V&V Date (YYYY-MM-DD)	2012.06.07
V&V Edition	1
V&V Disposition and Status	OK
V&V Charge Time	19.1811988

### A.2 Comments

Joint proposal with XMM.