

V&V Reference Report

L2 ASCDS Version : 8.4.4

Observation 9474 - L2 Version 2
Chandra X-Ray Center

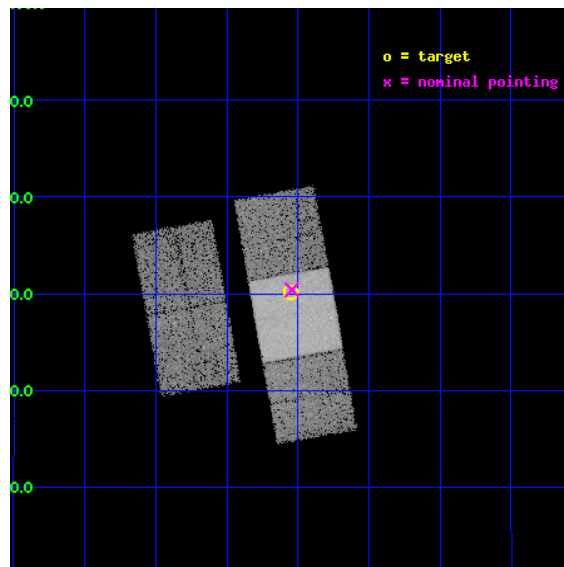
L2 Processing Date : May 9 2012

Contents

1	Front	2
2	OBI	3
2.1	OBI	3
2.1.1	Images	3
2.1.2	Bias	3
2.1.3	Parameters	4
2.1.4	Events	4
2.2	Compared Parameters	5
2.3	Aspect	6
2.4	Star Slots	9
2.4.1	Slot 3	9
2.4.2	Slot 4	10
2.4.3	Slot 5	11
2.4.4	Slot 6	12
2.4.5	Slot 7	13
2.5	FID Slots	14
2.5.1	Slot 0	14
2.5.2	Slot 1	15
2.5.3	Slot 2	16
A	Summary	17
A.1	Status	17
A.2	Comments	17

1 Front

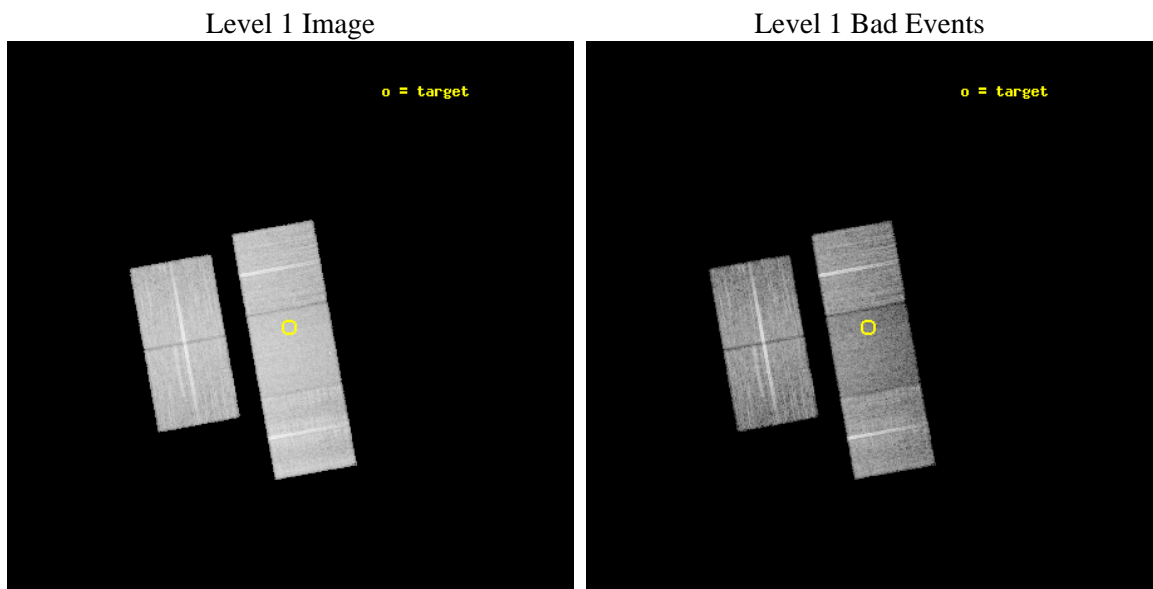
seq_num	900811	Sequence number
obs_id	9474	Observation id
title	Identifying the host galaxies for optically dark gamma-ray bursts	
observer	Dr Andrew Levan	Principal investigator
object	GRB 080207	Source name
dtcycle	0	
cycle	P	events from which exps? Prim/Second/Both
ra_targ	207.5125	Observer's specified target RA [deg]
dec_targ	7.502444	Observer's specified target Dec [deg]
ra_nom	207.51071079288	Nominal RA [deg]
dec_nom	7.5069163364255	Nominal Dec [deg]
roll_nom	79.812413824187	Nominal Roll [deg]
revision	2	Processing version of data
ontime	15028.800115585	Sum of GTIs [s]
livetime	14832.437778034	Livetime [s]
ontime2	15028.800115585	Sum of GTIs [s]
ontime3	14997.390003026	Sum of GTIs [s]
ontime6	15028.800115585	Sum of GTIs [s]
ontime7	15028.800115585	Sum of GTIs [s]
ontime8	15028.800115585	Sum of GTIs [s]
l2events	102831	Number of level 2 events



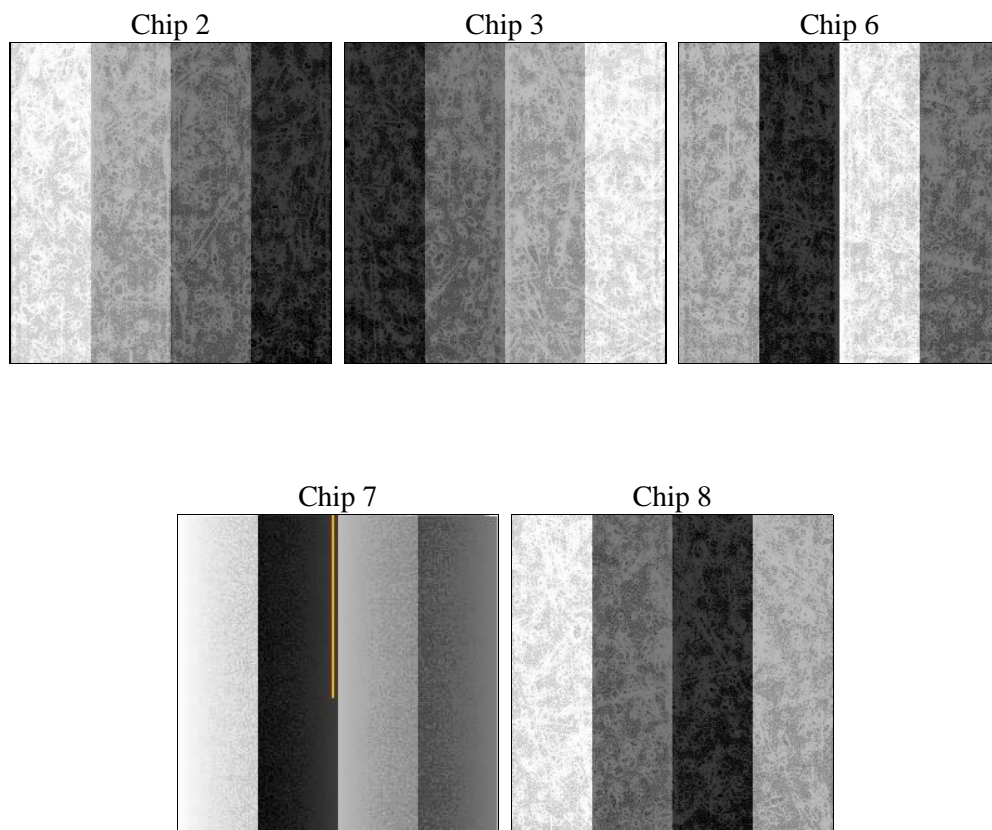
2 OBI

2.1 OBI

2.1.1 Images



2.1.2 Bias



2.1.3 Parameters

obi_num	0	Obi number	sched_exp_time	15000.000000	[s] Scheduled observation exposure time
ascdsver	8.4.4	Processing system revision	ontime	15028.800115585	Sum of GTIs [s]
caldsver	4.4.9	 	ontime2	15028.800115585	Sum of GTIs [s]
date	2012-05-09T18:47:24	Date and time of file creation	ontime3	14997.390003026	Sum of GTIs [s]
revision	2	Processing version of data	ontime6	15028.800115585	Sum of GTIs [s]
			ontime7	15028.800115585	Sum of GTIs [s]
			ontime8	15028.800115585	Sum of GTIs [s]
			l1events	653395	Number of level 1 events

2.1.4 Events

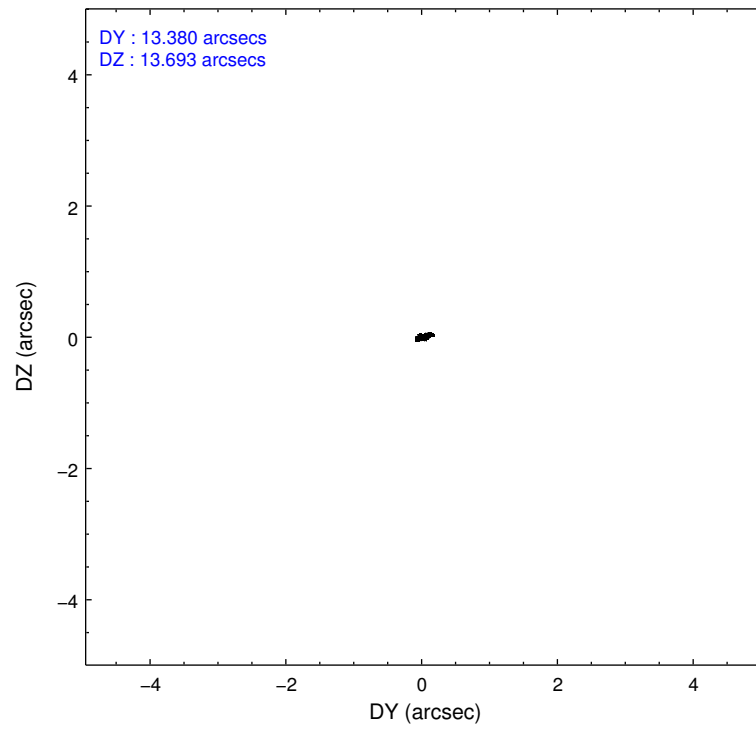
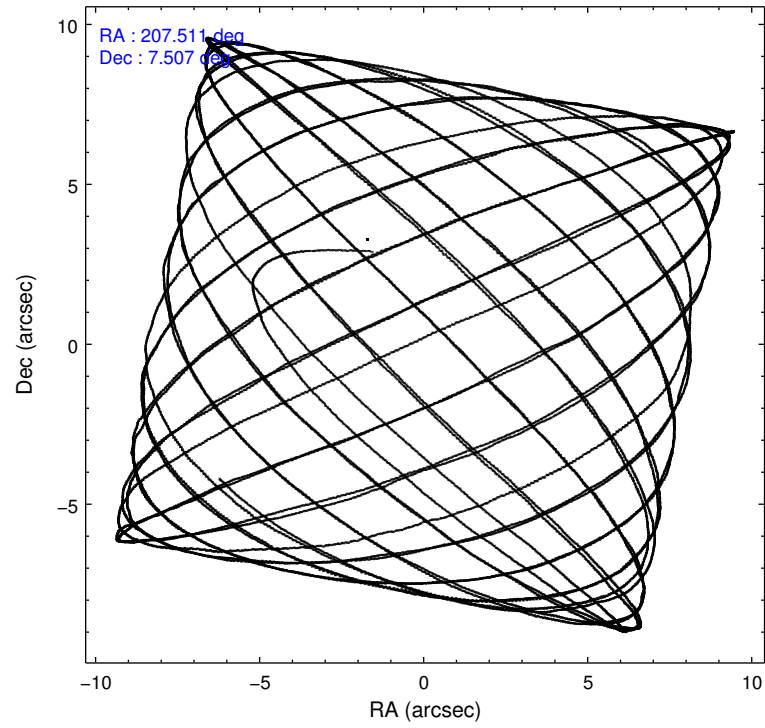
	ccd 2	ccd 3	ccd 6	ccd 7	ccd 8
level 1 events	123904	119274	123950	135052	151215
rejected events	112395	107980	111205	73676	115058
rejected %	90%	90%	89%	54%	76%

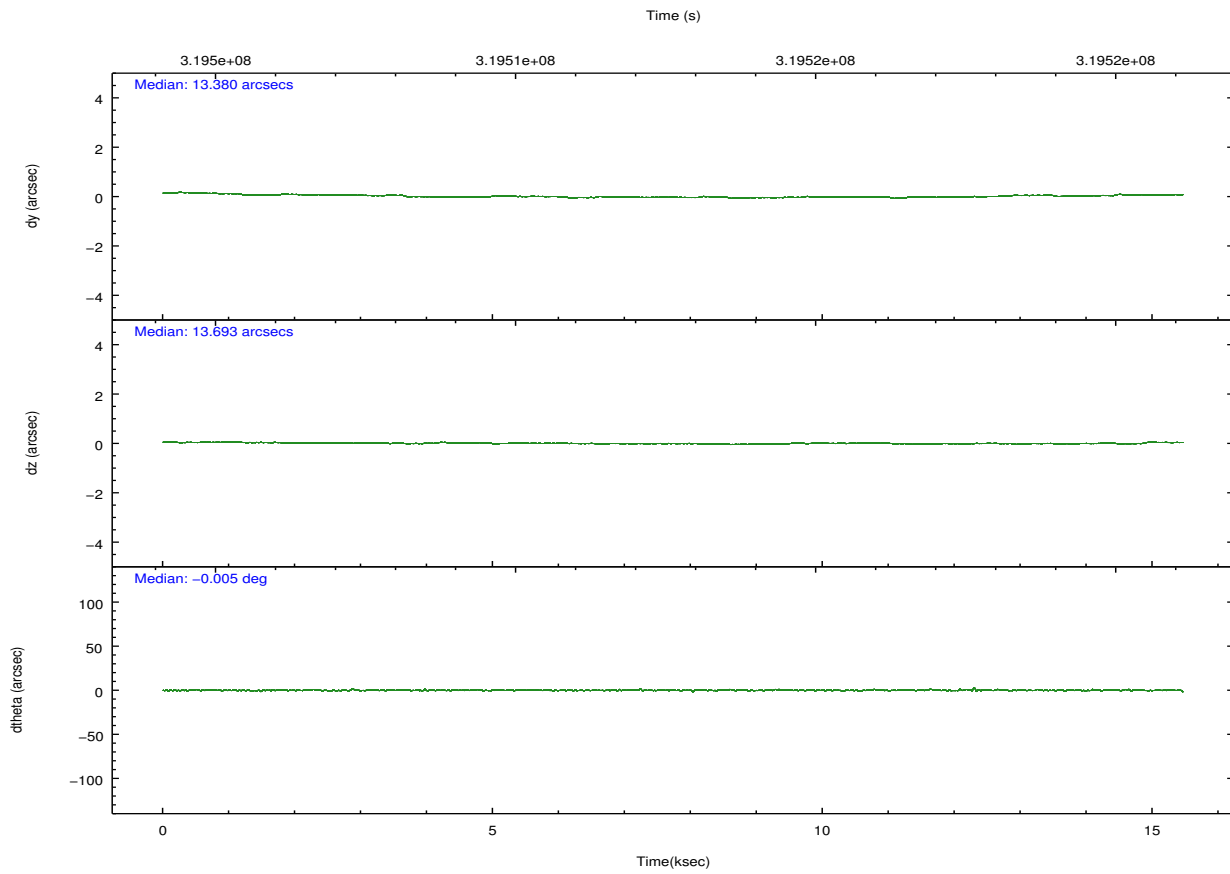
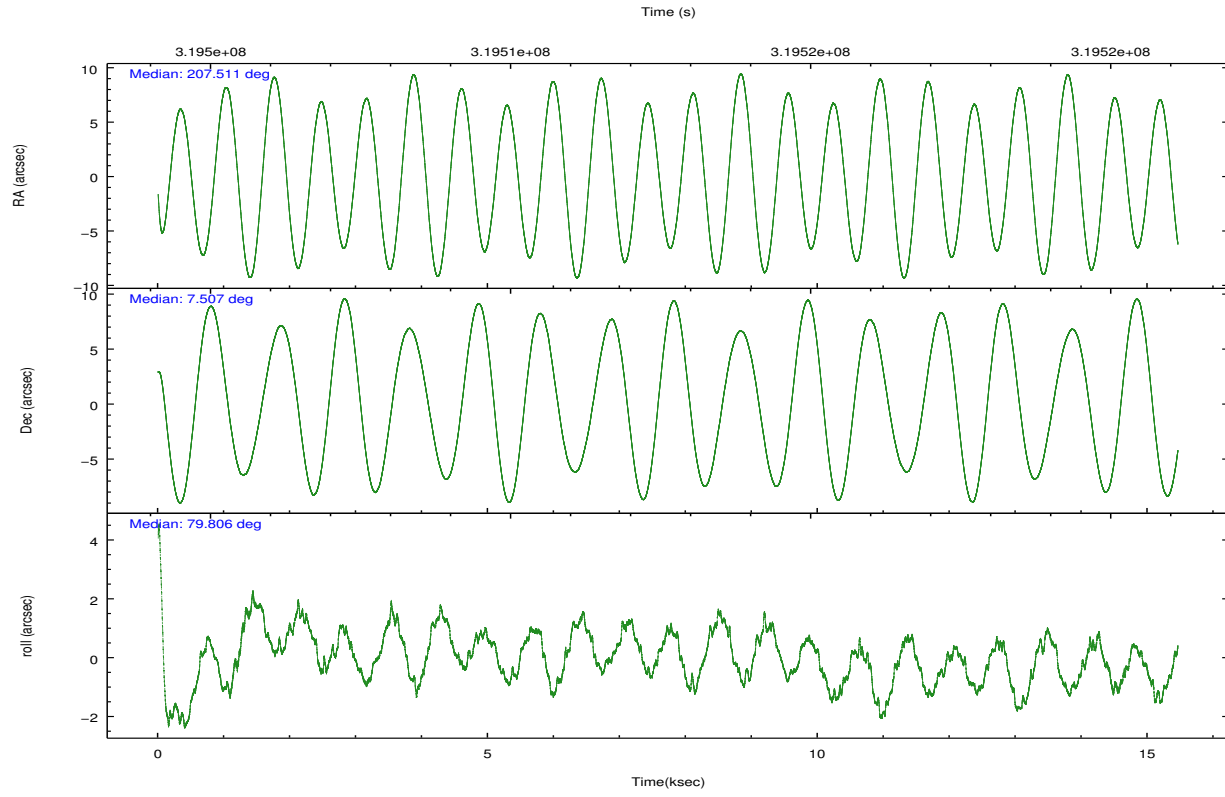
	ccd 2	ccd 3	ccd 6	ccd 7	ccd 8
grade 0 events	4182	4132	4559	5944	10528
	3%	3%	3%	4%	6%
grade 1 events	60	80	59	172	150
	0%	0%	0%	0%	0%
grade 2 events	2731	2350	2691	12354	8423
	2%	1%	2%	9%	5%
grade 3 events	1268	1264	1348	5479	3894
	1%	1%	1%	4%	2%
grade 4 events	1335	1318	1373	5548	3657
	1%	1%	1%	4%	2%
grade 5 events	3911	4751	4749	14024	7077
	3%	3%	3%	10%	4%
grade 6 events	2000	2234	2782	32072	9662
	1%	1%	2%	23%	6%
grade 7 events	108417	103145	106389	59459	107824
	87%	86%	85%	44%	71%

2.2 Compared Parameters

Parameter	Planned	Actual	Parameter	Planned	Actual
Instrument	ACIS	ACIS	Obspar format version number	7	7
Detector	ACIS-23678	ACIS-23678	Obspar file type	PREDICTED	ACTUAL
Grating	NONE	NONE	Obspar update status	NONE	UPDATED
Data mode	VFAINT	VFAINT	CCD I0 on	N	N
Observation mode	POINTING	POINTING	CCD I1 on	N	N
[deg] Pointing RA	207.520409	207.5107107928763	CCD I2 on	O4	Y
[deg] Pointing Dec	7.481357	7.506916336425487	CCD I3 on	O3	Y
[deg] Pointing Roll	79.654518	79.81241382418723	CCD S0 on	N	N
[mm] SIM focus pos	-0.684267	-0.6828225247311905	CCD S1 on	N	N
[mm] SIM defocus	0	0.001444936568705701	CCD S2 on	O1	Y
[mm] SIM translation stage pos	-190.132523	-190.1425803651734	CCD S3 on	Y	Y
[mm] SIM translation stage offset	0	0.01005778216563158	CCD S4 on	O2	Y
[s] Observation start time (MET)	319505364.184000	319504298.10794	CCD S5 on	N	N
Observation start date	2008-02-15T23:28:19	2008-02-15T23:11:38	Number of optional ACIS chips dropped	0	0
[s] Observation end time (MET)	319520364.184000	319521197.28376	On-chip summing requested	N	N
Observation end date	2008-02-16T03:38:19	2008-02-16T03:53:17	Subarray requested	NONE	NONE
Read mode	TIMED	TIMED	Alternating exposures requested	N	N
			[s] Primary exposure time	0.000000	3.1

2.3 Aspect



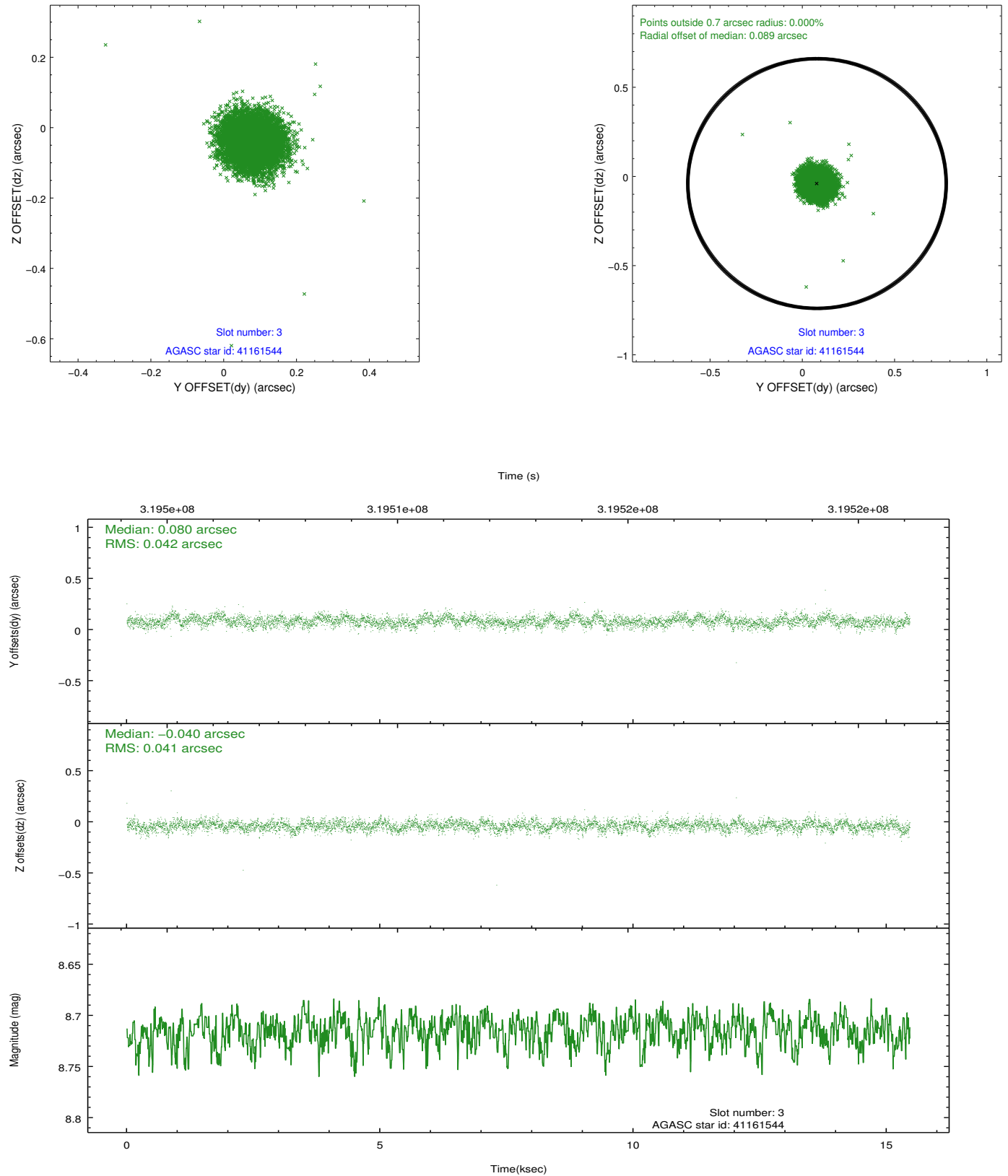


Slot Statistics

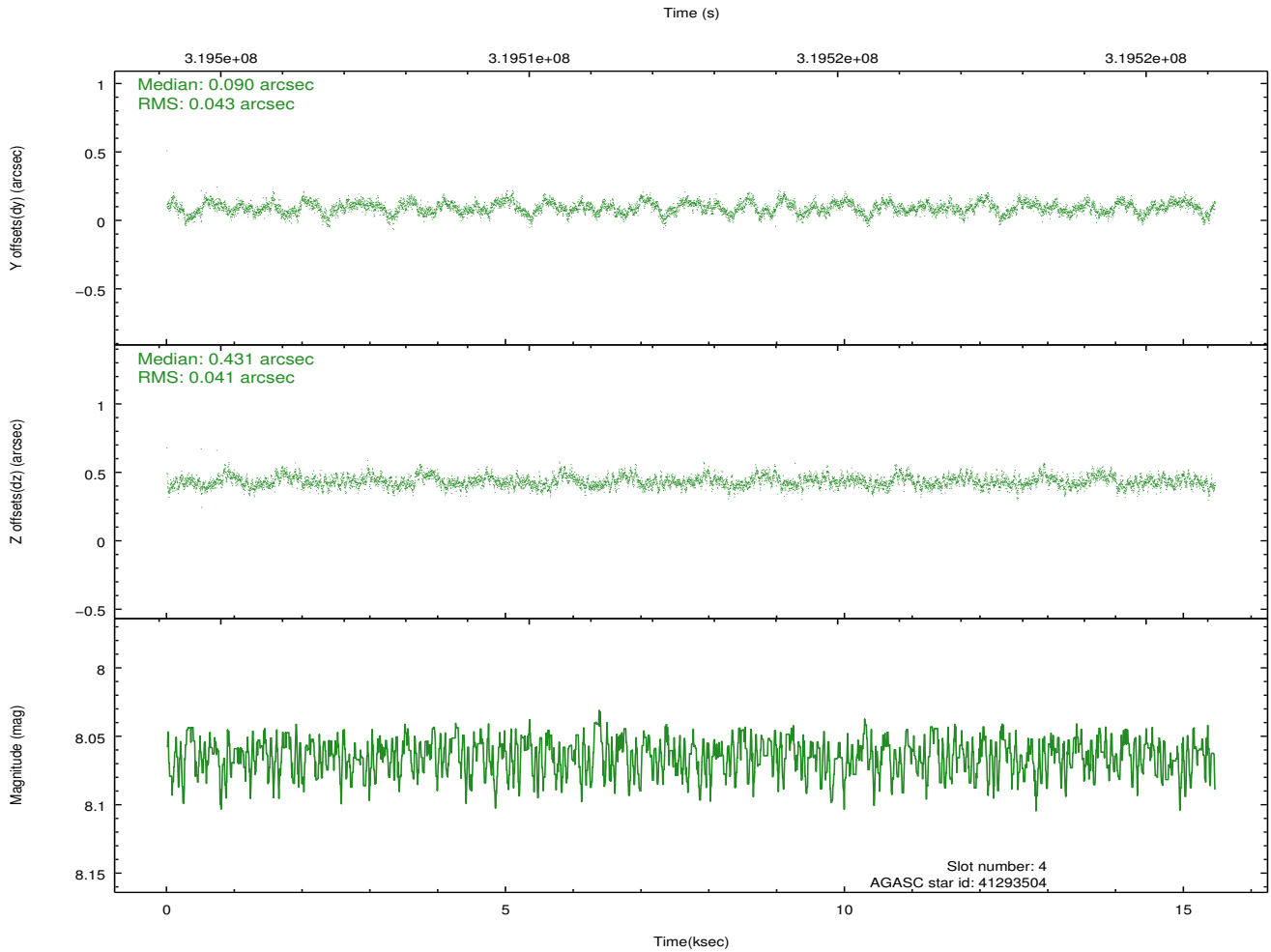
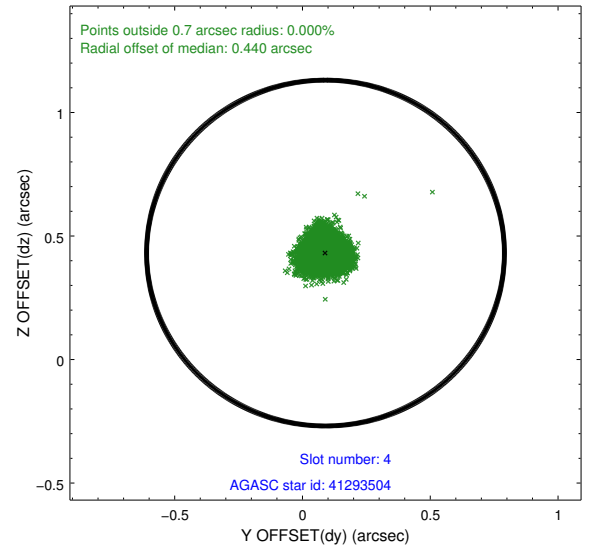
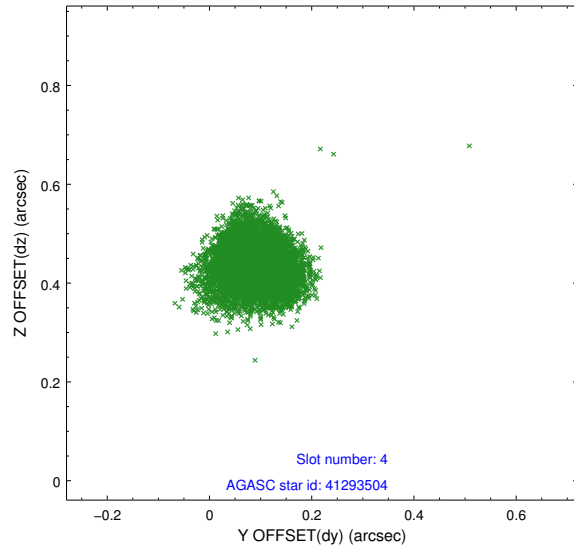
slot	status	id	mag	n_pts	med_dy	med_dz	dr1	dr2	ra	dec	mean_y	mean_z
0	FID	ACIS-S-1	7.20	3770	0.066	-0.015	0.007	0.012	0.000000	0.000000	929.76	-1730.64
1	FID	ACIS-S-4	7.19	3771	0.113	-0.017	0.007	0.012	0.000000	0.000000	2147.38	173.21
2	FID	ACIS-S-5	7.23	3771	-0.206	0.044	0.006	0.011	0.000000	0.000000	-1819.00	167.21
3	GUIDE	41161544	8.71	7539	0.080	-0.040	0.062	0.099	207.311825	7.495832	-81.97	741.74
4	GUIDE	41293504	8.06	7543	0.090	0.431	0.064	0.100	208.105927	7.234364	-497.23	-2216.05
5	GUIDE	41297632	8.77	7537	0.187	0.110	0.070	0.111	207.770041	7.246184	-672.50	-1028.13
6	GUIDE	117973544	8.27	7538	-0.179	-0.352	0.061	0.098	206.964876	8.001601	1487.94	2284.63
7	GUIDE	117974528	7.06	7542	-0.180	-0.154	0.086	0.124	207.144565	7.960116	1455.66	1627.86

2.4 Star Slots

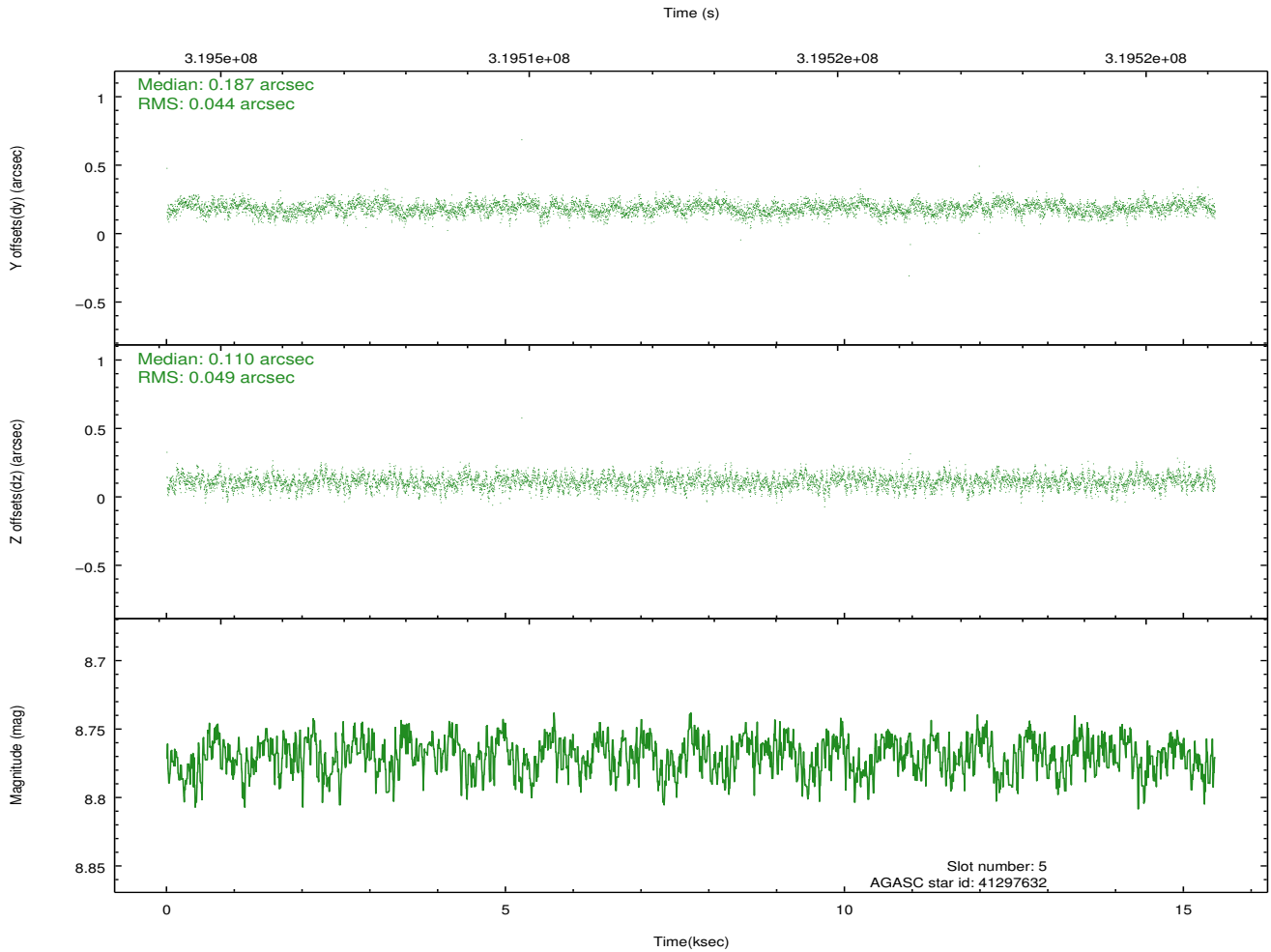
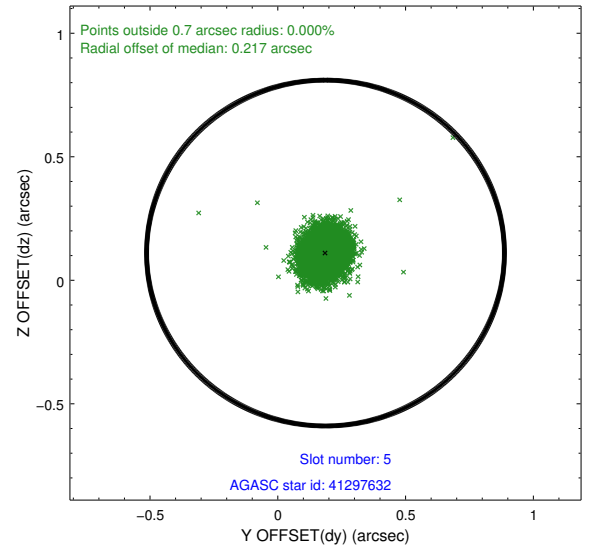
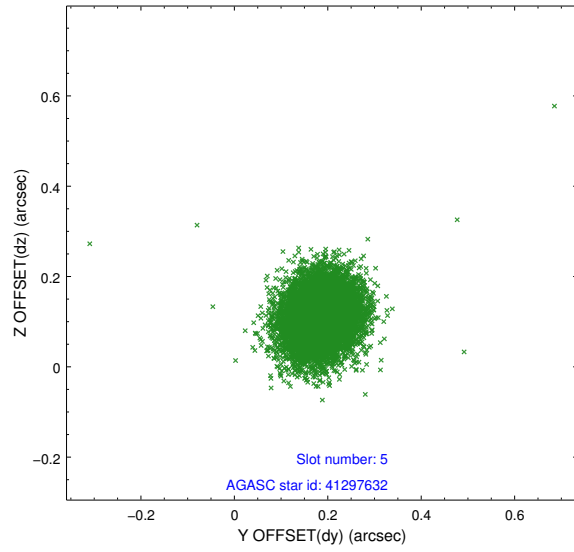
2.4.1 Slot 3



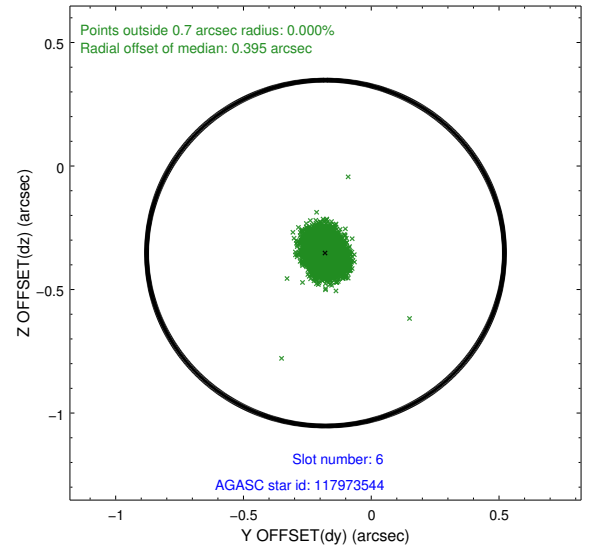
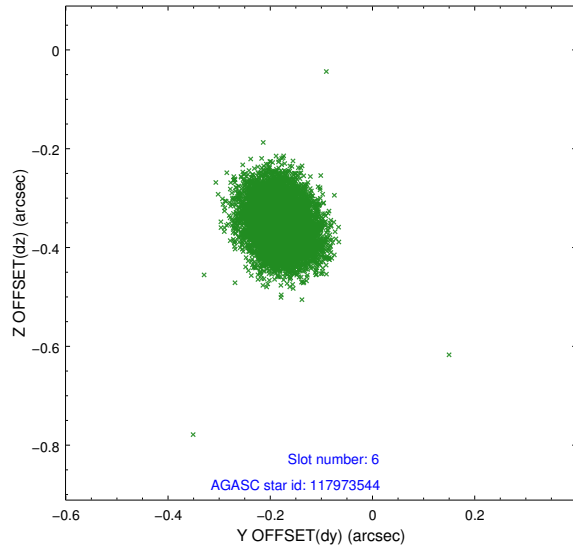
2.4.2 Slot 4



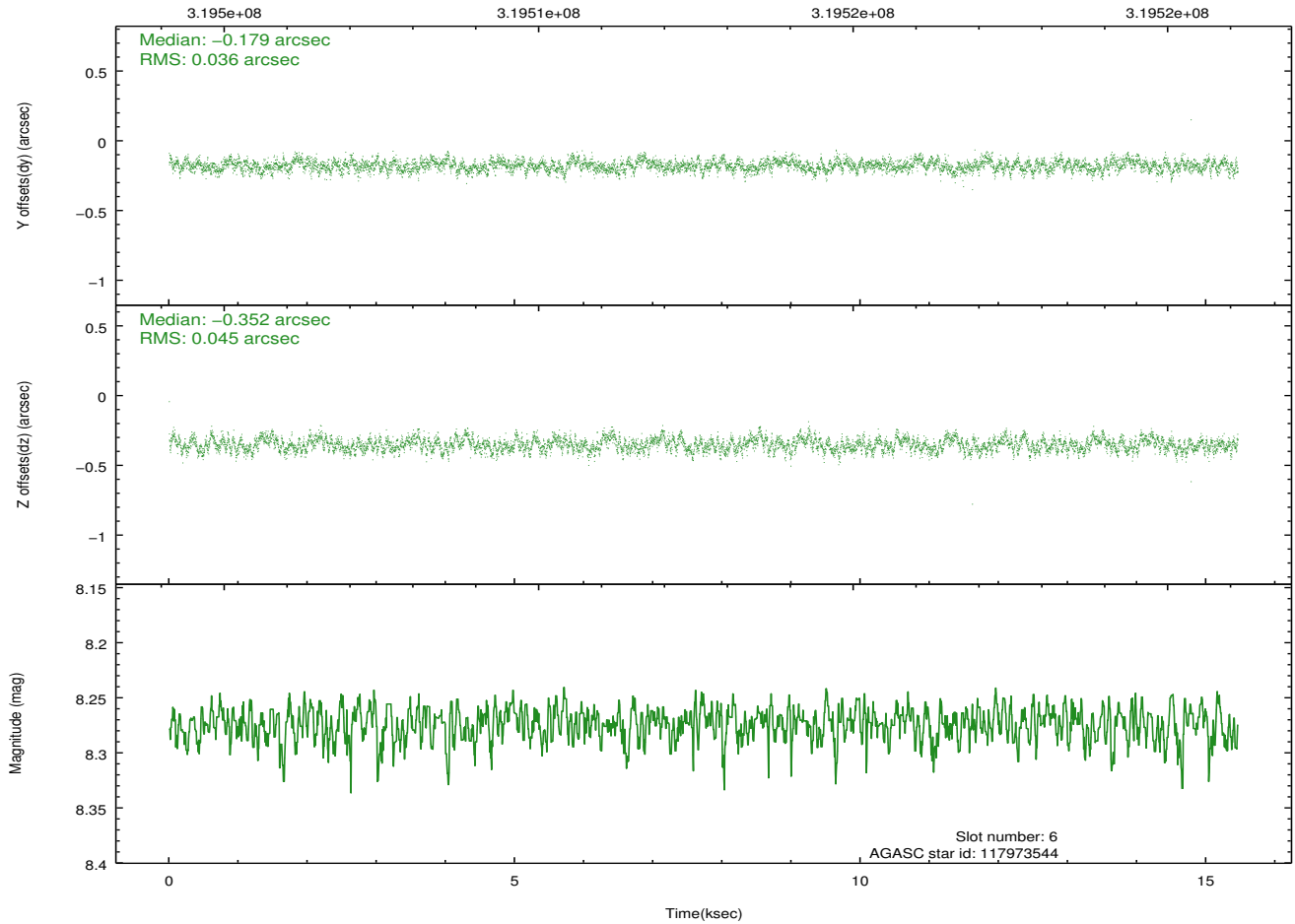
2.4.3 Slot 5



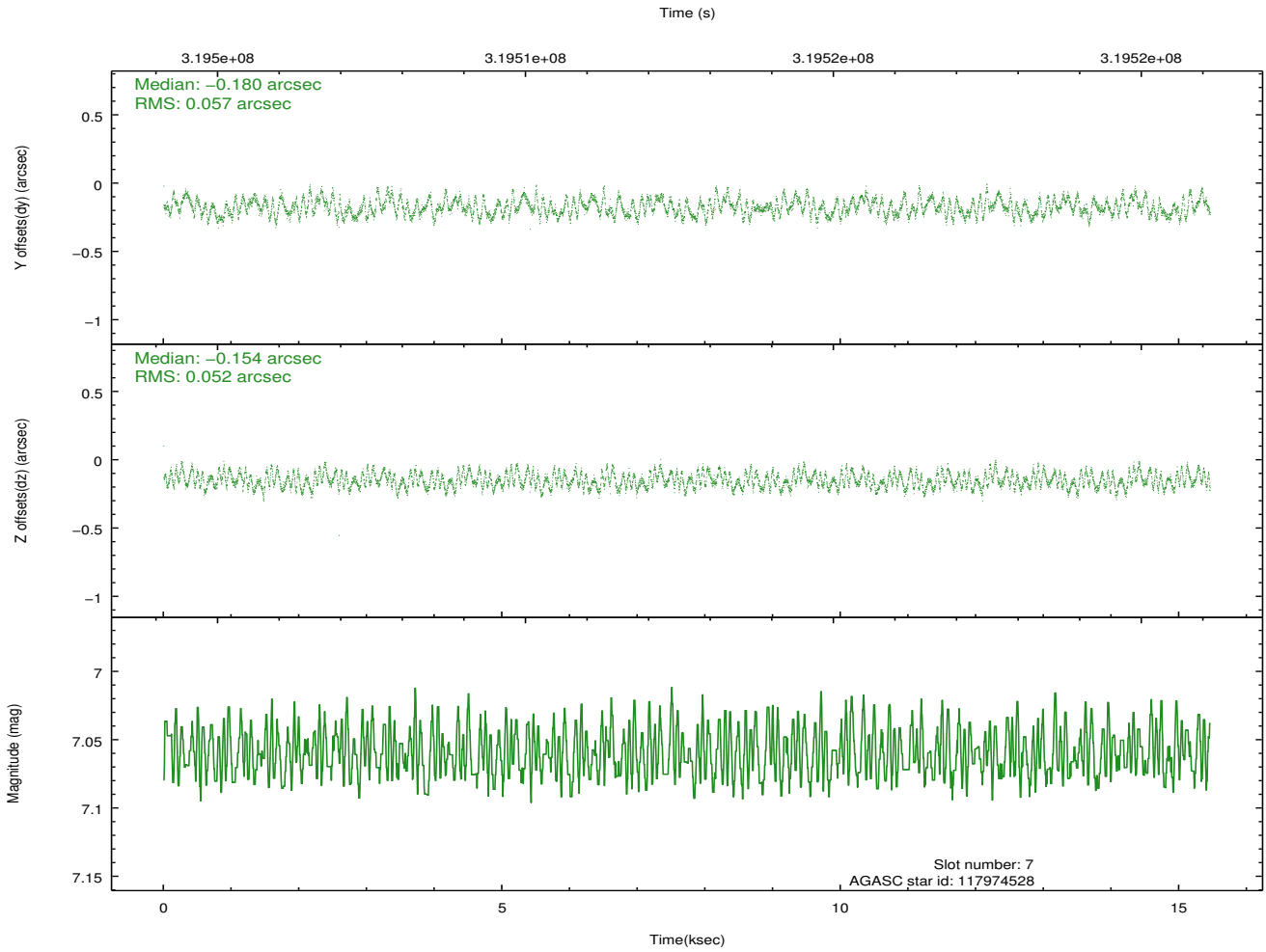
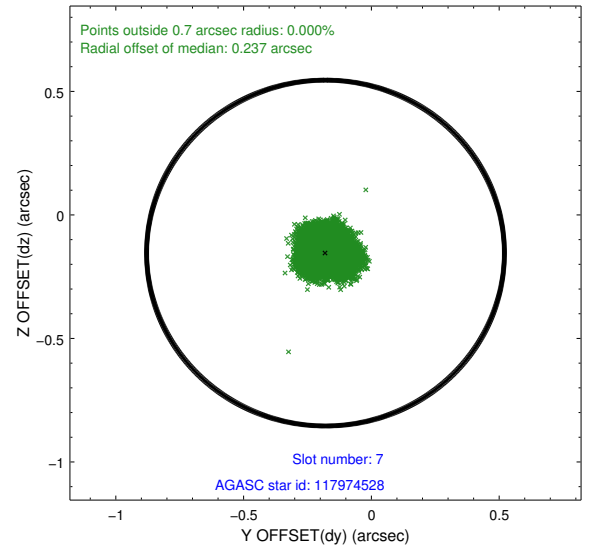
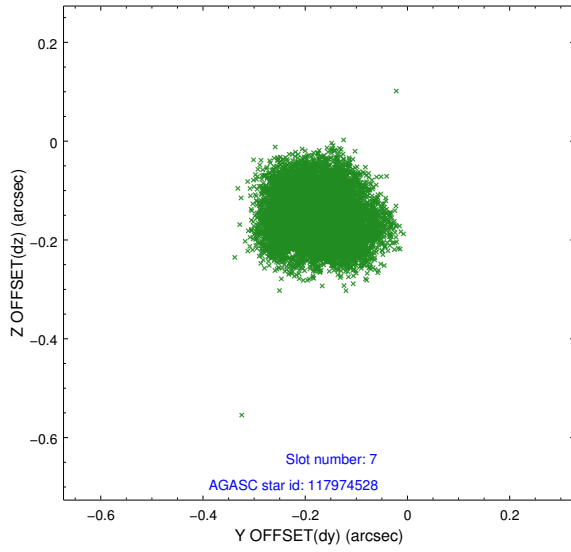
2.4.4 Slot 6



Time (s)

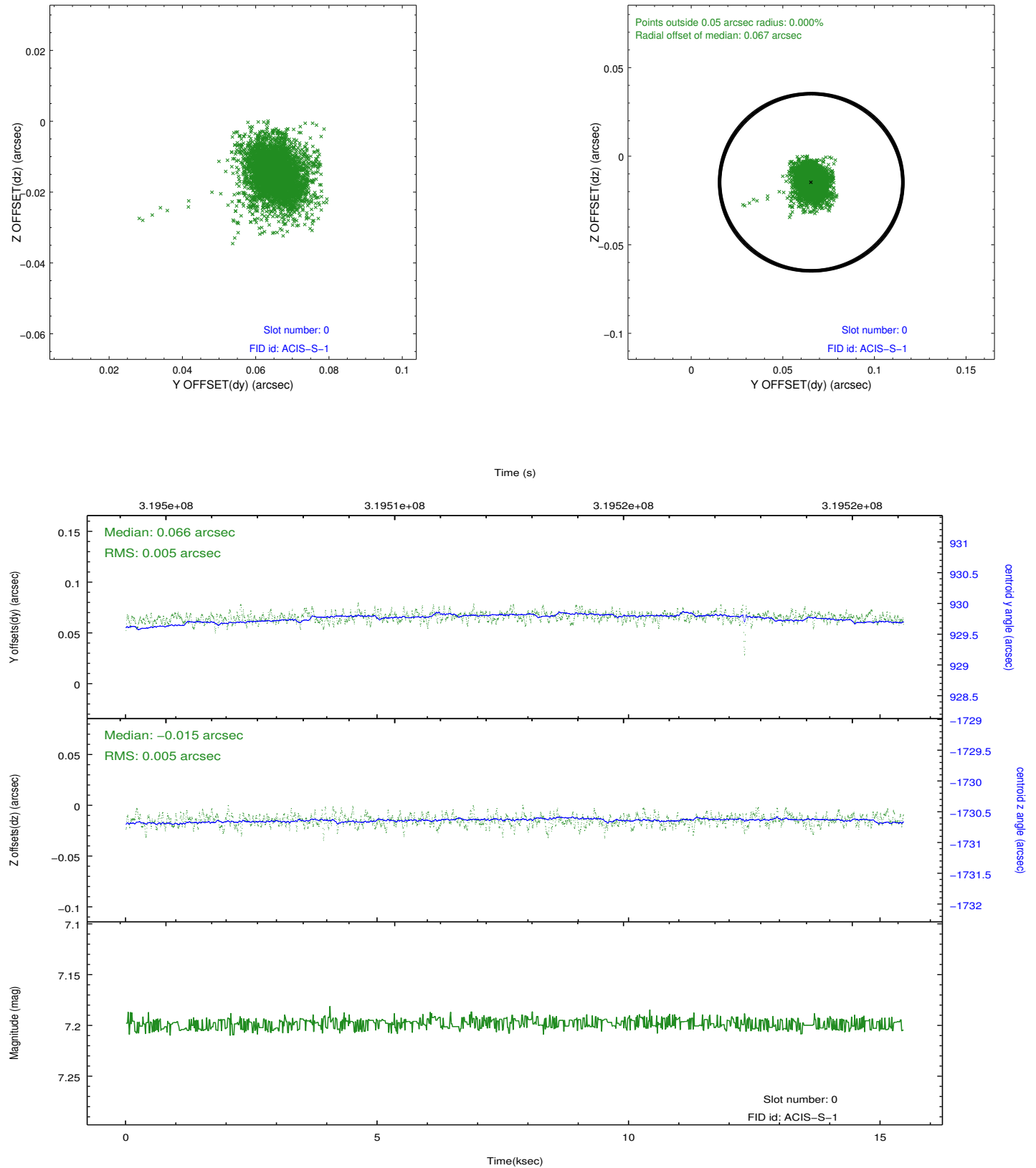


2.4.5 Slot 7

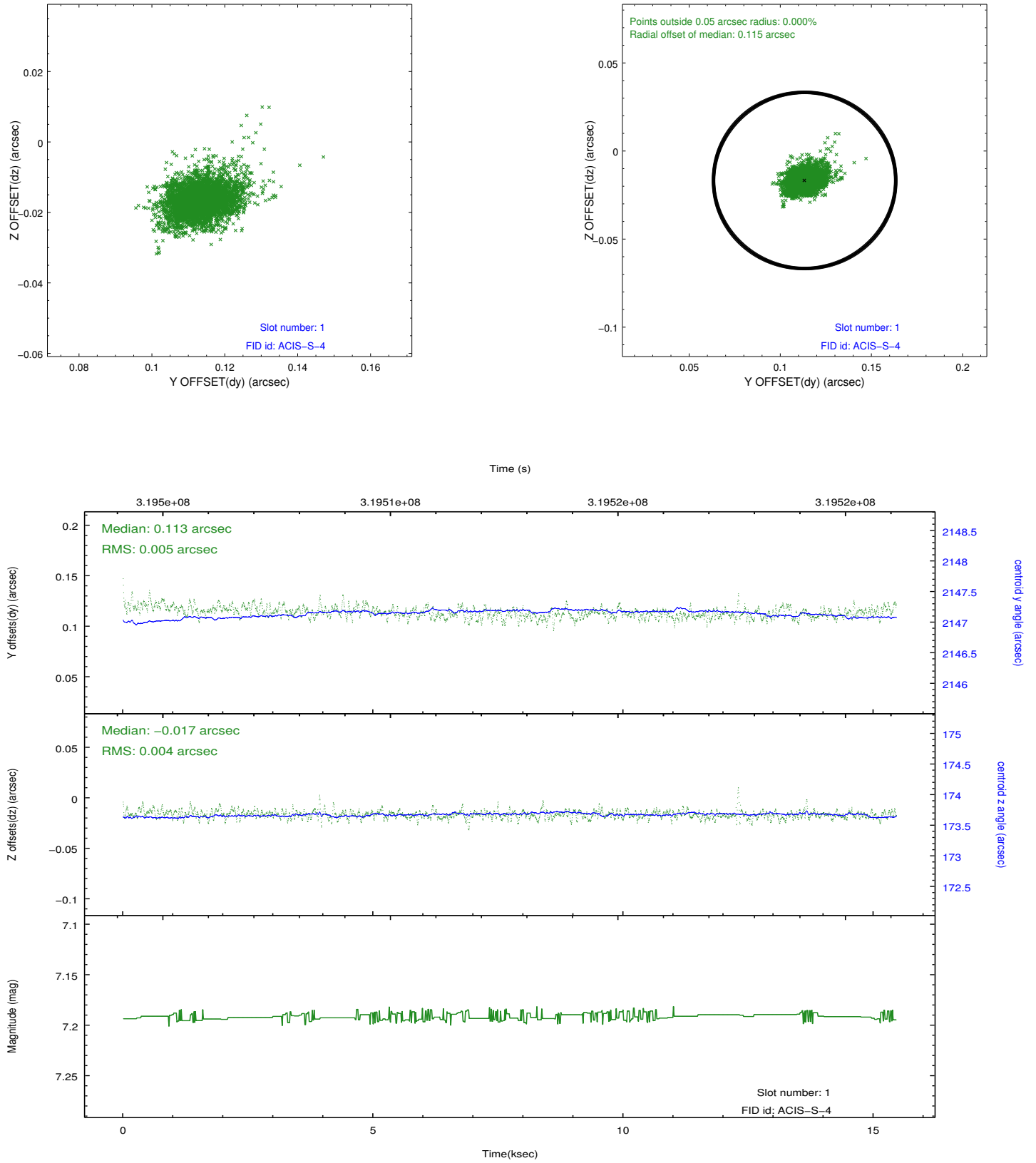


2.5 FID Slots

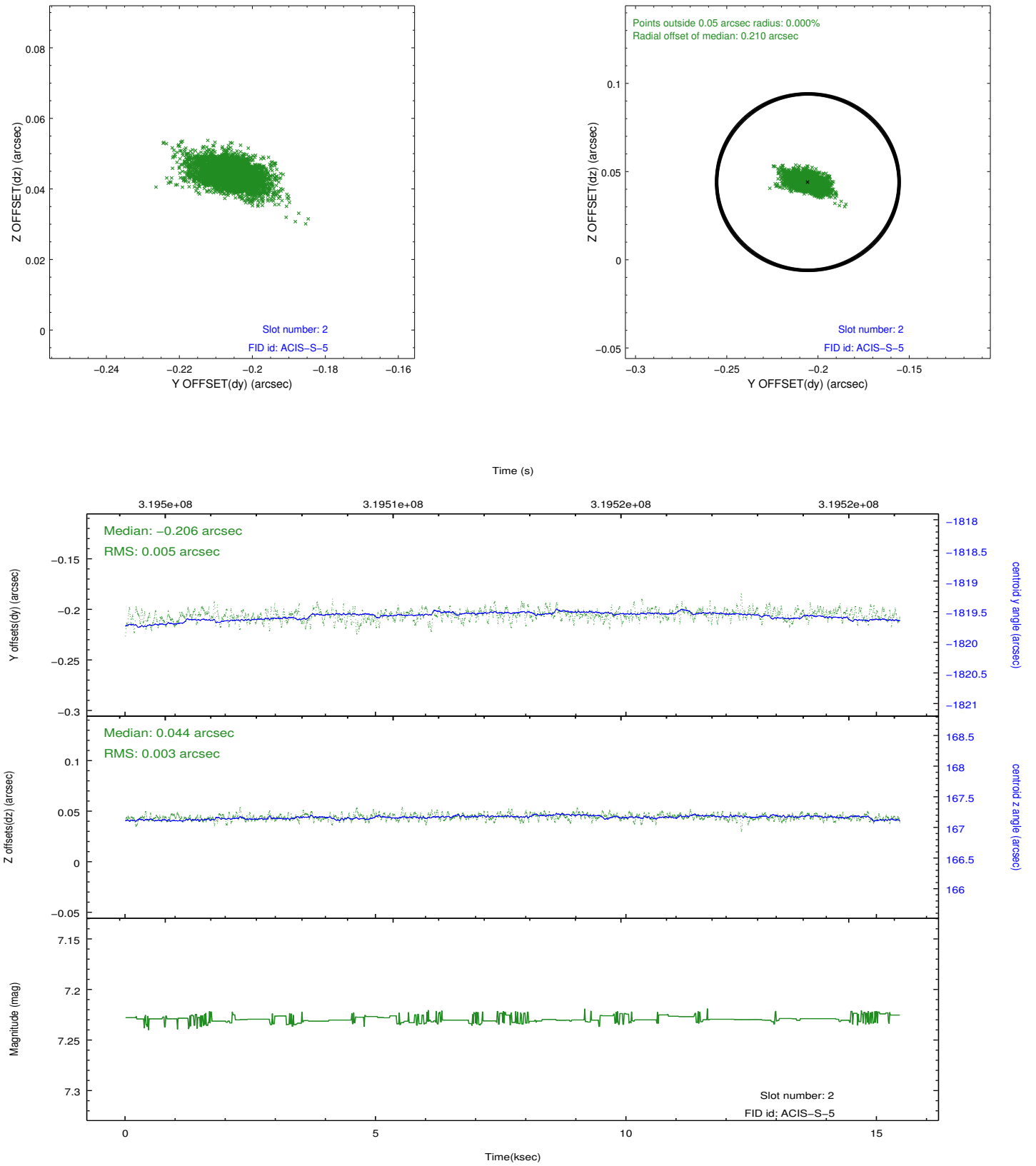
2.5.1 Slot 0



2.5.2 Slot 1



2.5.3 Slot 2



A Summary

A.1 Status

V&V Scientist	Jen Lauer
V&V Date (YYYY-MM-DD)	2012.05.11
V&V Edition	1
V&V Disposition and Status	OK
V&V Charge Time	15.0288001

A.2 Comments

Joint proposal: HST