

V&V Reference Report

L2 ASCDS Version : 8.4.4

Observation 9164 - L2 Version 2
Chandra X-Ray Center

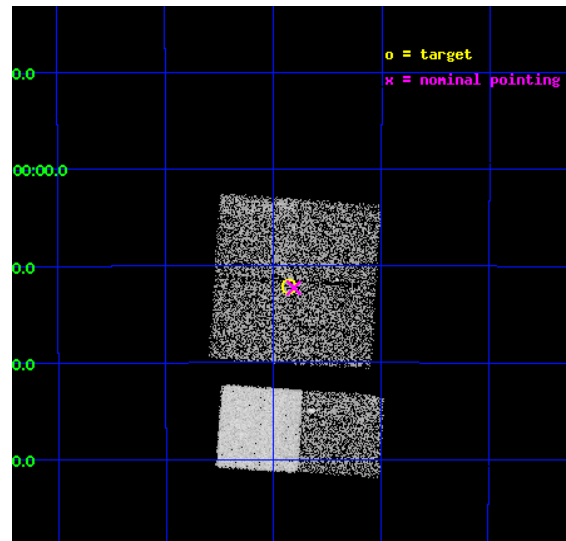
L2 Processing Date : May 15 2012

Contents

1	Front	2
2	OBI	3
2.1	OBI	3
2.1.1	Images	3
2.1.2	Bias	3
2.1.3	Parameters	4
2.1.4	Events	4
2.2	Compared Parameters	5
2.3	Aspect	6
2.4	Star Slots	9
2.4.1	Slot 3	9
2.4.2	Slot 4	10
2.4.3	Slot 5	11
2.4.4	Slot 6	12
2.4.5	Slot 7	13
2.5	FID Slots	14
2.5.1	Slot 0	14
2.5.2	Slot 1	15
2.5.3	Slot 2	16
A	Summary	17
A.1	Status	17
A.2	Comments	17

1 Front

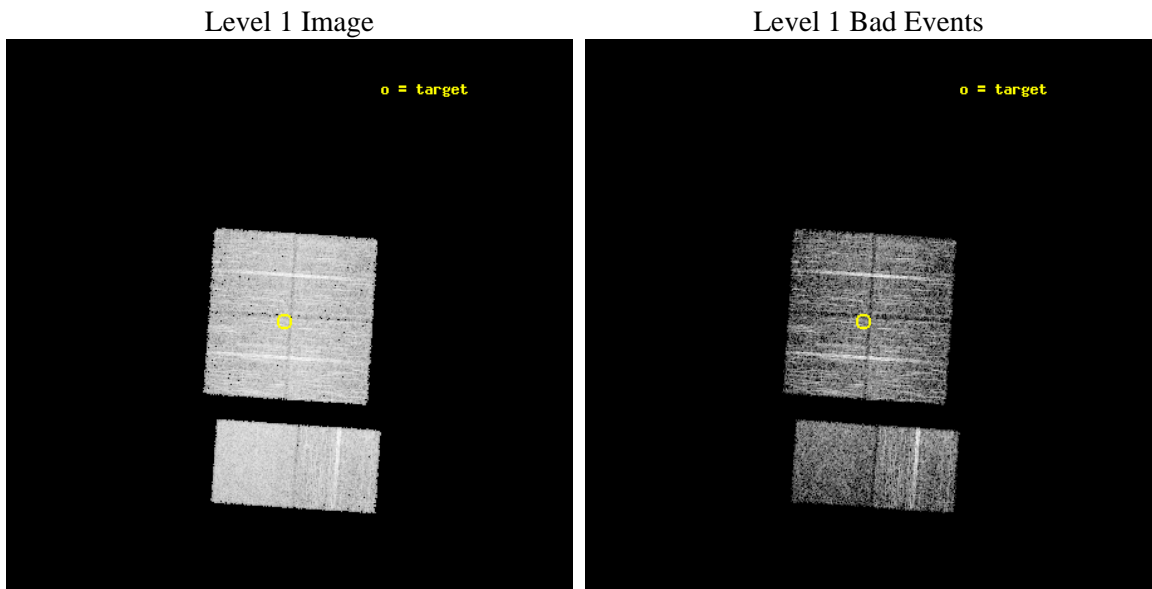
seq_num	701606	Sequence number
obs_id	9164	Observation id
title	Chandra follow-up observations of Swift/BAT unidentified sources: Searching for obscured type II quasars	Proposal title
observer	Dr. Peter Predehl	Principal investigator
object	J0447.8-4112	Source name
dtcycle	0	
cycle	P	events from which exps? Prim/Second/Both
ra_targ	71.962917	Observer's specified target RA [deg]
dec_targ	-41.202	Observer's specified target Dec [deg]
ra_nom	71.952767796366	Nominal RA [deg]
dec_nom	-41.204814539755	Nominal Dec [deg]
roll_nom	183.78410259091	Nominal Roll [deg]
revision	2	Processing version of data
ontime	5045.1271125674	Sum of GTIs [s]
livetime	4981.2426752573	Livetime [s]
ontime0	5045.0039925575	Sum of GTIs [s]
ontime1	5045.0450325608	Sum of GTIs [s]
ontime2	5045.0860725641	Sum of GTIs [s]
ontime3	5045.1271125674	Sum of GTIs [s]
ontime6	5045.209192574	Sum of GTIs [s]
ontime7	5045.1681525707	Sum of GTIs [s]
l2events	37033	Number of level 2 events



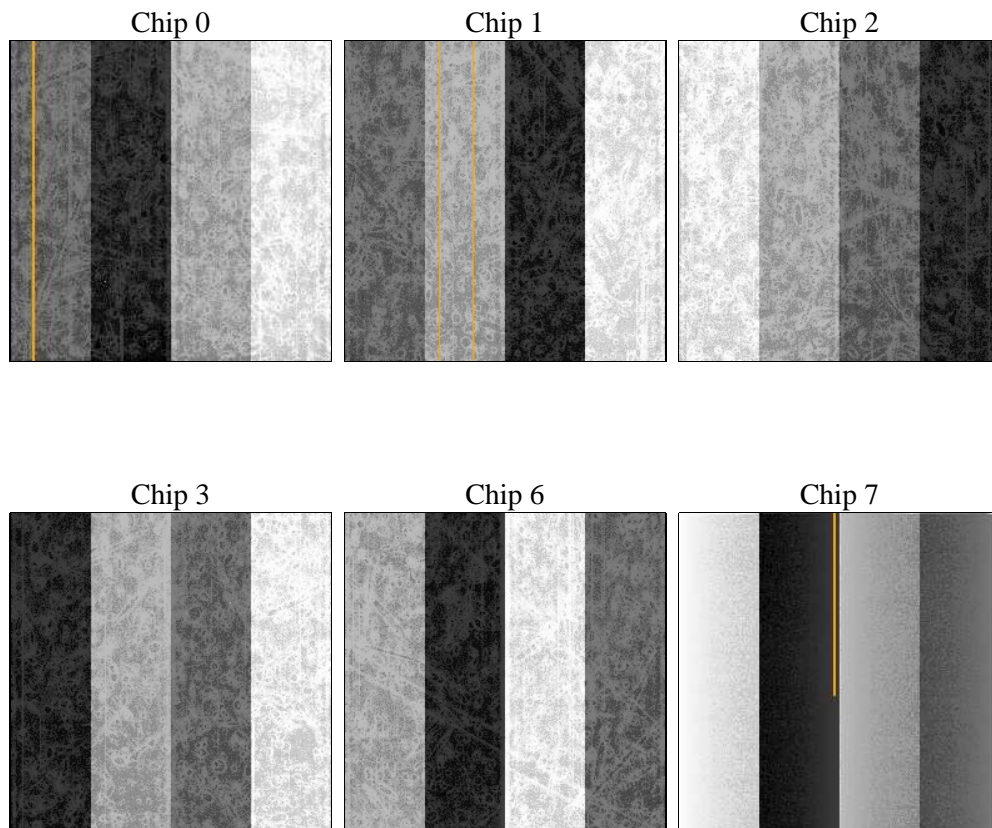
2 OBI

2.1 OBI

2.1.1 Images



2.1.2 Bias



2.1.3 Parameters

obi_num	0	Obi number	sched_exp_time	5000.000000	[s] Scheduled observation exposure time
ascdsver	8.4.4	Processing system revision	ontime	5045.1271125674	Sum of GTIs [s]
caldbver	4.4.9	 	ontime0	5045.0039925575	Sum of GTIs [s]
date	2012-05-15T15:49:00	Date and time of file creation	ontime1	5045.0450325608	Sum of GTIs [s]
revision	2	Processing version of data	ontime2	5045.0860725641	Sum of GTIs [s]
			ontime3	5045.1271125674	Sum of GTIs [s]
			ontime6	5045.209192574	Sum of GTIs [s]
			ontime7	5045.1681525707	Sum of GTIs [s]
			l1events	234359	Number of level 1 events

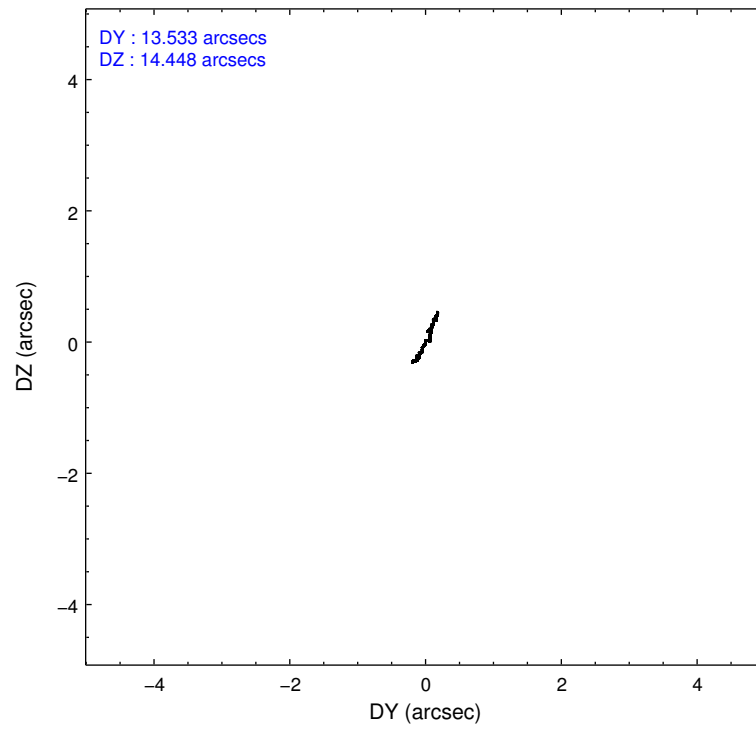
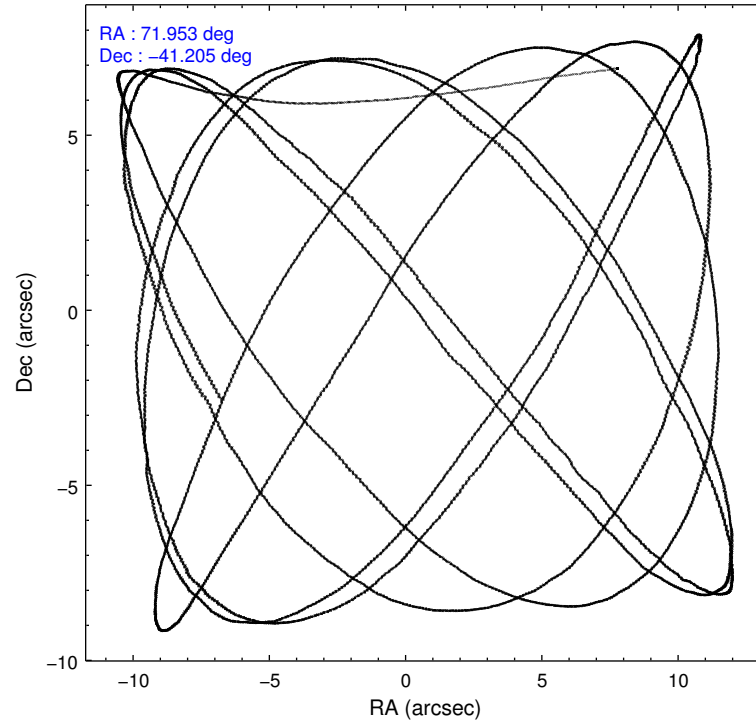
2.1.4 Events

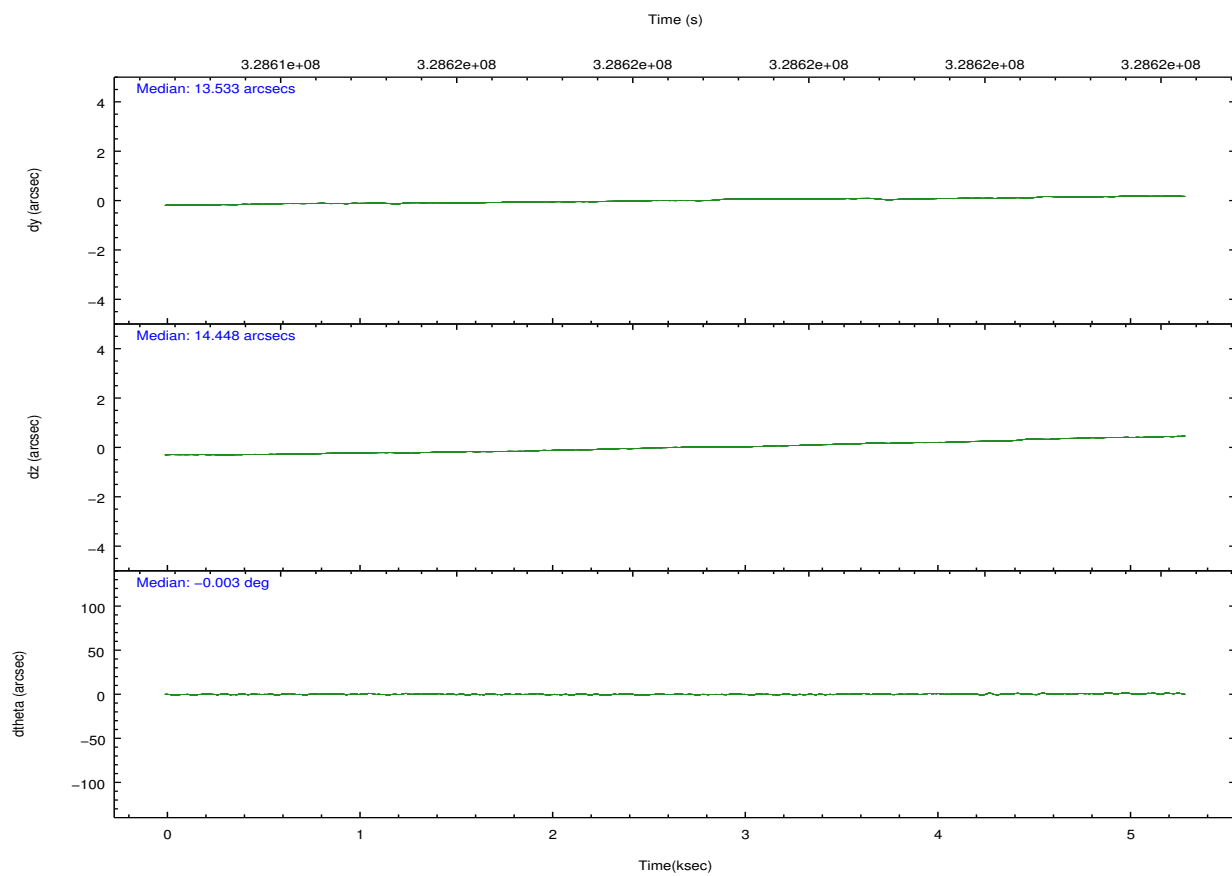
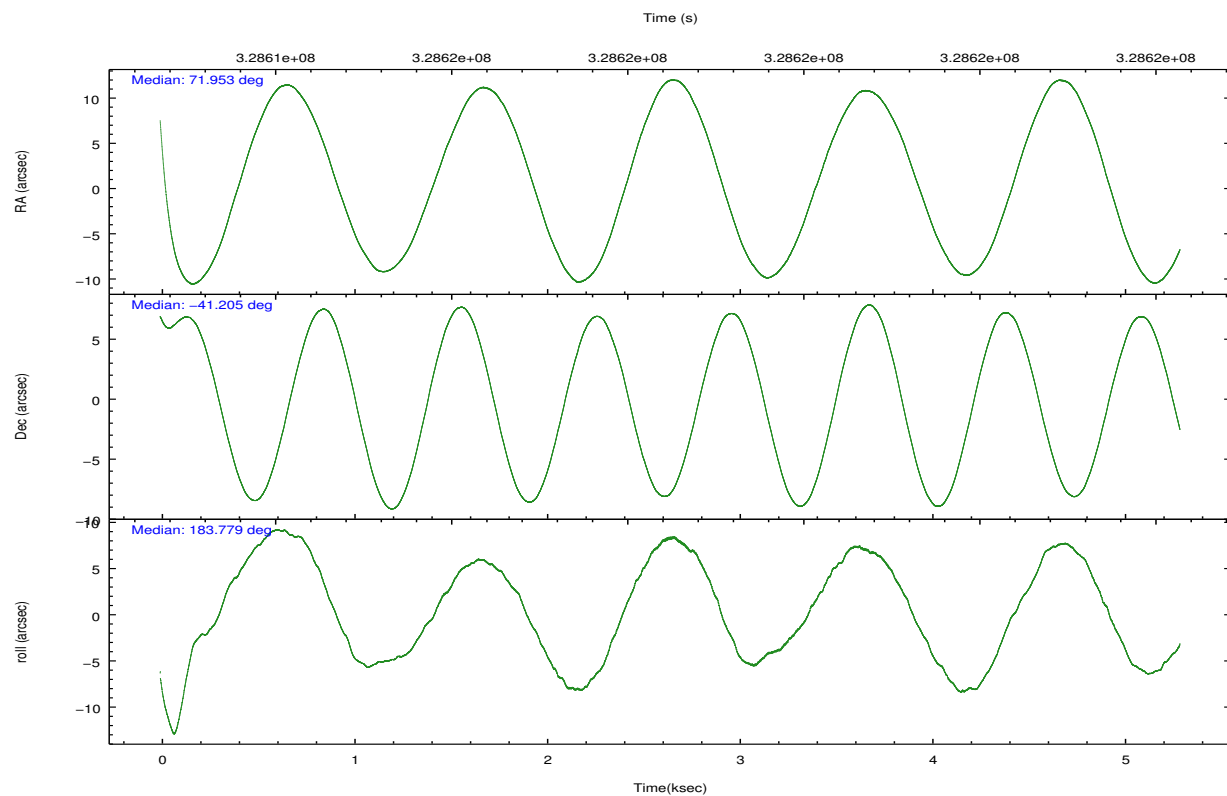
	ccd 0	ccd 1	ccd 2	ccd 3	ccd 6	ccd 7		ccd 0	ccd 1	ccd 2	ccd 3	ccd 6	ccd 7
level 1 events	35534	34829	40421	38749	39904	44922	grade 0 events	1478	1758	1412	1318	1457	1920
rejected events	31464	30221	36526	35050	35749	24288		4%	5%	3%	3%	3%	4%
rejected %	88%	86%	90%	90%	89%	54%	grade 1 events	18	18	21	23	15	58
								0%	0%	0%	0%	0%	0%
							grade 2 events	1037	1007	974	821	937	4243
								2%	2%	2%	2%	2%	9%
							grade 3 events	427	465	402	441	462	1898
								1%	1%	0%	1%	1%	4%
							grade 4 events	377	455	432	409	406	1847
								1%	1%	1%	1%	1%	4%
							grade 5 events	1385	1468	1312	1579	1655	4561
								3%	4%	3%	4%	4%	10%
							grade 6 events	754	926	676	712	895	10735
								2%	2%	1%	1%	2%	23%
							grade 7 events	30058	28732	35192	33446	34077	19660
								84%	82%	87%	86%	85%	43%

2.2 Compared Parameters

Parameter	Planned	Actual	Parameter	Planned	Actual
Instrument	ACIS	ACIS	Obspar format version number	7	7
Detector	ACIS-012367	ACIS-012367	Obspar file type	PREDICTED	ACTUAL
Grating	NONE	NONE	Obspar update status	NONE	UPDATED
Data mode	FAINT	FAINT	CCD I0 on	Y	Y
Observation mode	POINTING	POINTING	CCD I1 on	Y	Y
[deg] Pointing RA	71.983178	71.95276779636589	CCD I2 on	Y	Y
[deg] Pointing Dec	-41.189523	-41.20481453975477	CCD I3 on	Y	Y
[deg] Pointing Roll	183.595466	183.7841025909065	CCD S0 on	N	N
[mm] SIM focus pos	-0.782348	-0.7809083437167272	CCD S1 on	N	N
[mm] SIM defocus	0	0.001439871863259334	CCD S2 on	O2	Y
[mm] SIM translation stage pos	-233.592463	-233.5874344608287	CCD S3 on	O1	Y
[mm] SIM translation stage offset	0	-0.005018542100998502	CCD S4 on	N	N
[s] Observation start time (MET)	328613882.184000	328612819.60132	CCD S5 on	N	N
Observation start date	2008-05-31T09:36:57	2008-05-31T09:20:19	Number of optional ACIS chips dropped	0	0
[s] Observation end time (MET)	328618882.184000	328620087.36417	On-chip summing requested	N	N
Observation end date	2008-05-31T11:00:17	2008-05-31T11:21:27	Subarray requested	NONE	NONE
Read mode	TIMED	TIMED	Alternating exposures requested	N	N
			[s] Primary exposure time	0.000000	3.2

2.3 Aspect



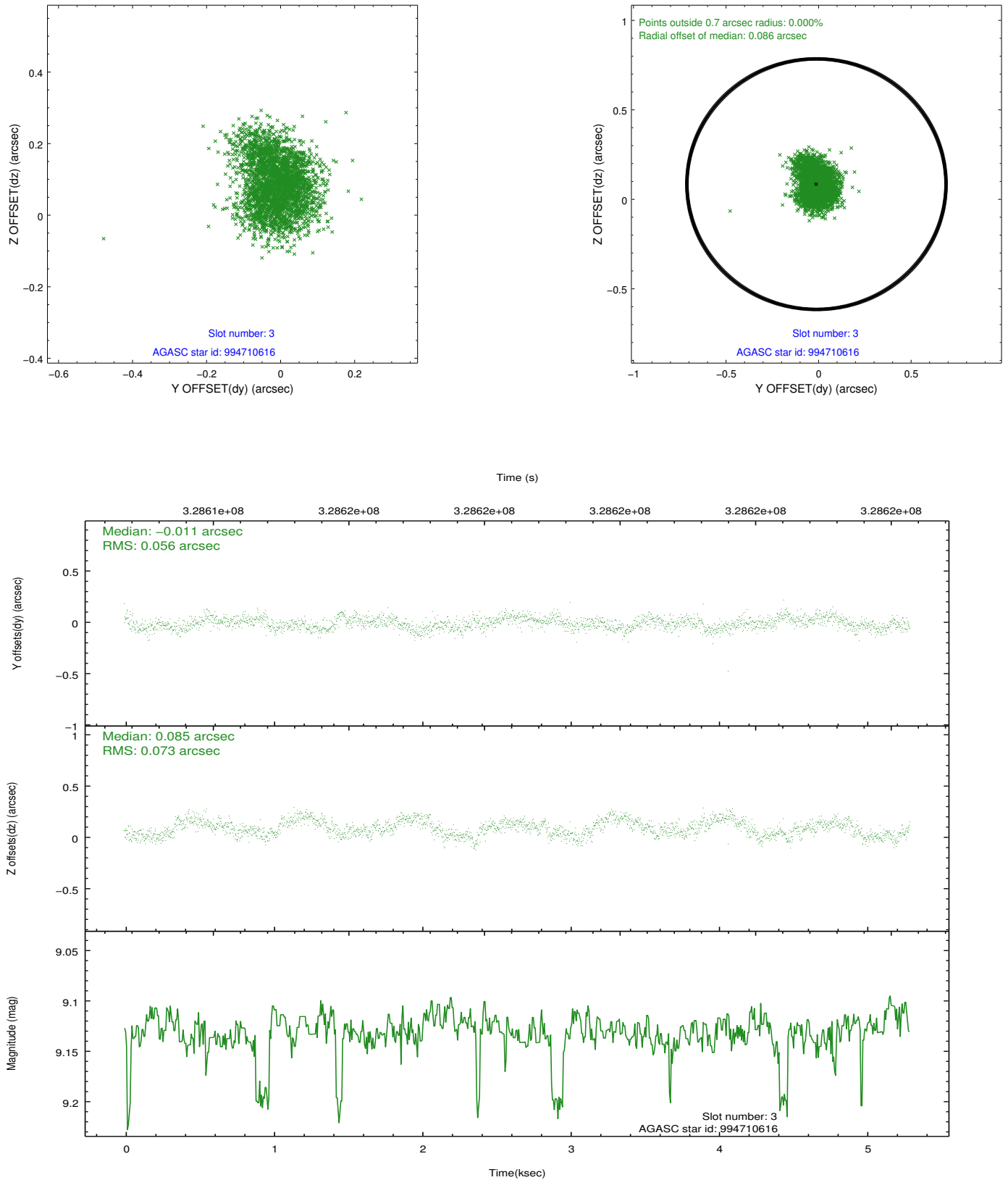


Slot Statistics

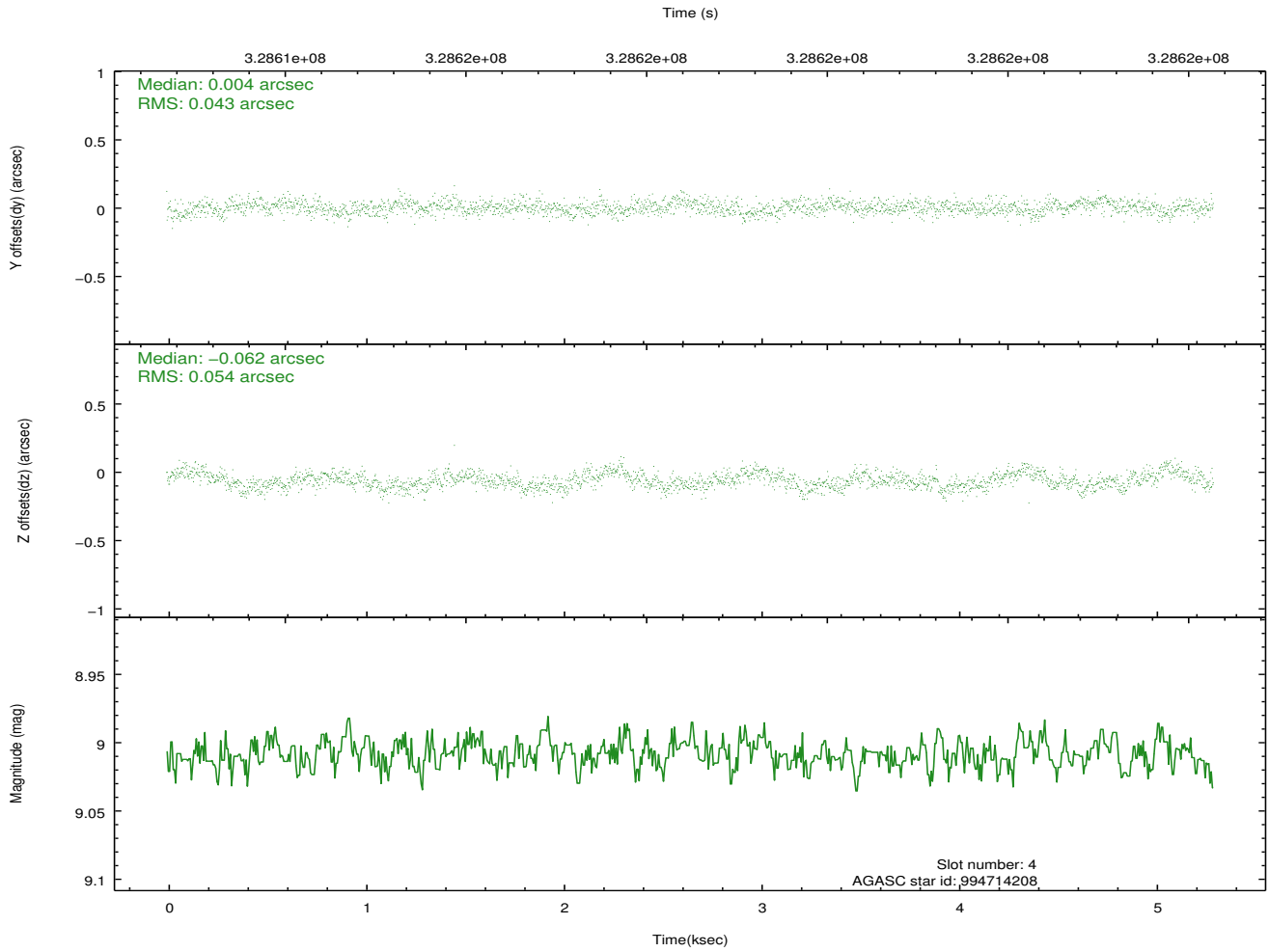
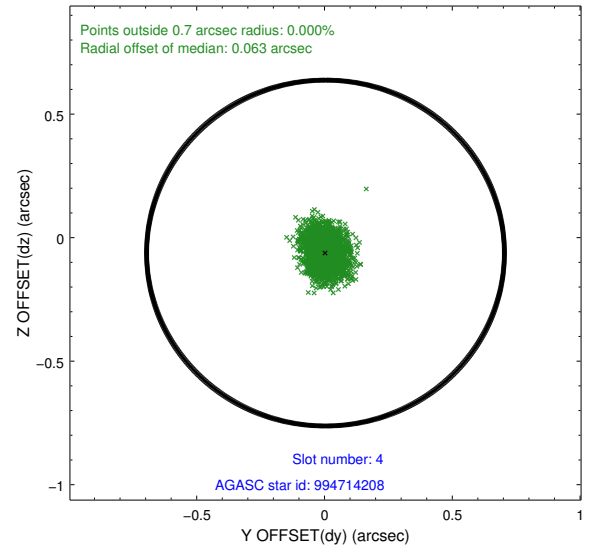
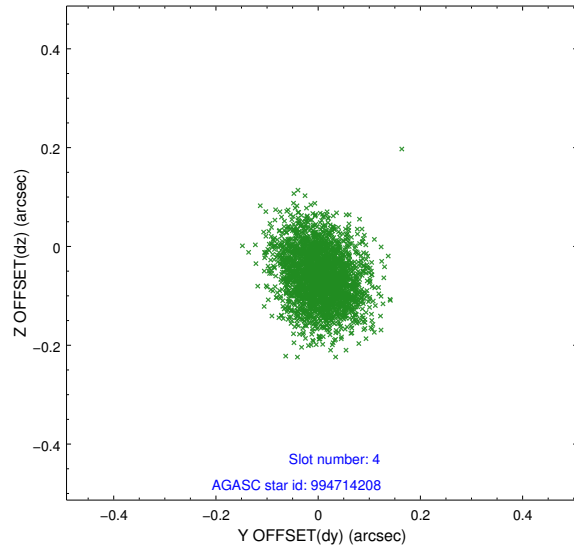
slot	status	id	mag	n_pts	med_dy	med_dz	dr1	dr2	ra	dec	mean_y	mean_z
0	FID	ACIS-I-1	7.01	1292	0.015	0.024	0.010	0.017	0.000000	0.000000	925.99	-838.01
1	FID	ACIS-I-5	7.00	1292	-0.197	0.028	0.008	0.013	0.000000	0.000000	-1821.72	1058.87
2	FID	ACIS-I-6	7.01	1292	0.091	0.019	0.011	0.018	0.000000	0.000000	390.34	1704.69
3	GUIDE	994710616	9.13	2577	-0.011	0.085	0.099	0.156	71.767359	-40.811003	501.42	-1395.55
4	GUIDE	994714208	9.01	2581	0.004	-0.062	0.073	0.120	71.536660	-41.477655	1267.13	962.79
5	GUIDE	994715480	7.56	2583	0.026	-0.001	0.067	0.107	72.307846	-41.586970	-782.58	1485.40
6	GUIDE	994716440	9.17	2583	-0.133	0.007	0.090	0.147	71.392417	-41.658046	1691.18	1590.35
7	GUIDE	994716888	9.17	2581	0.112	-0.035	0.088	0.138	72.546306	-41.590309	-1422.16	1541.27

2.4 Star Slots

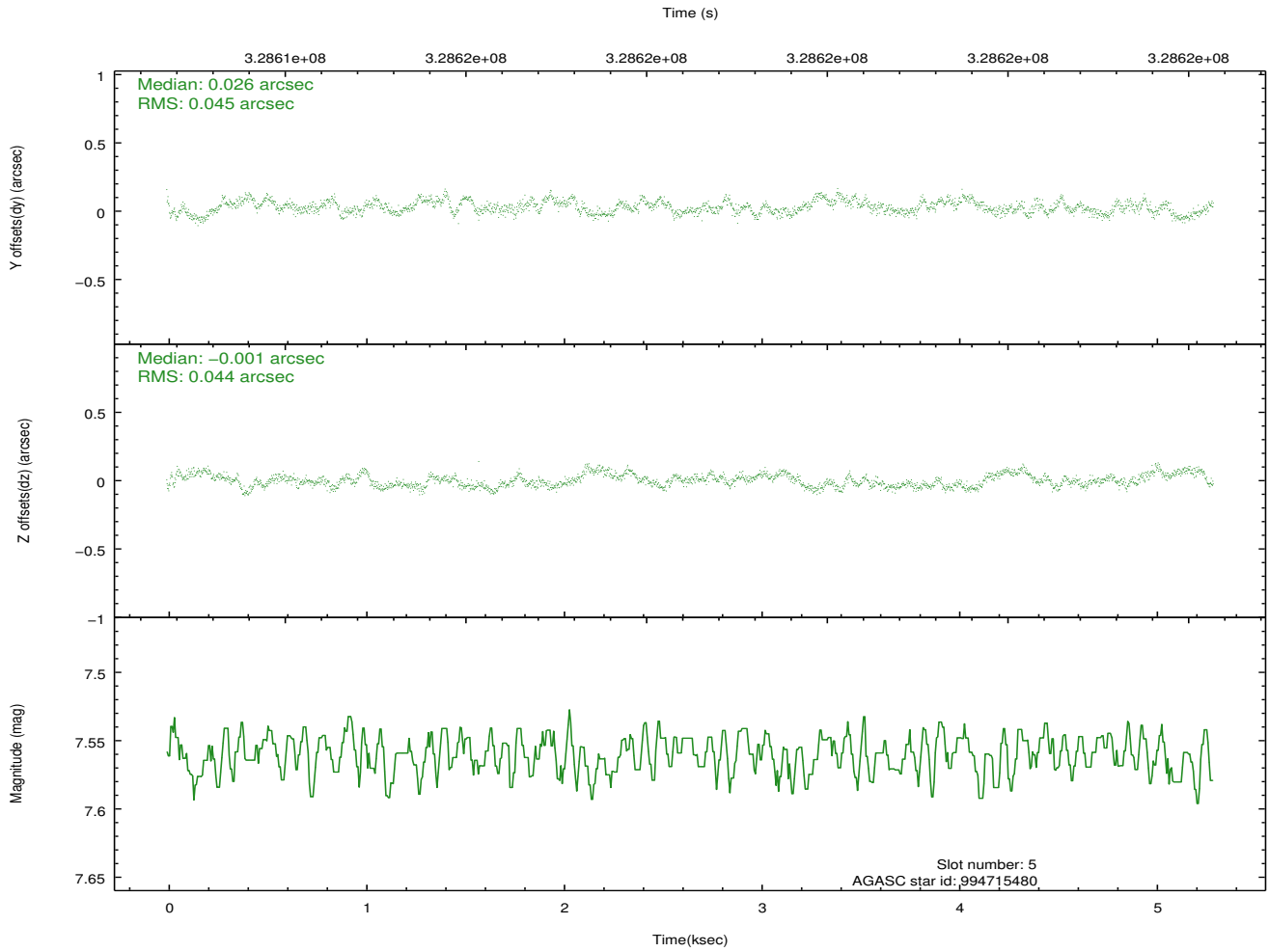
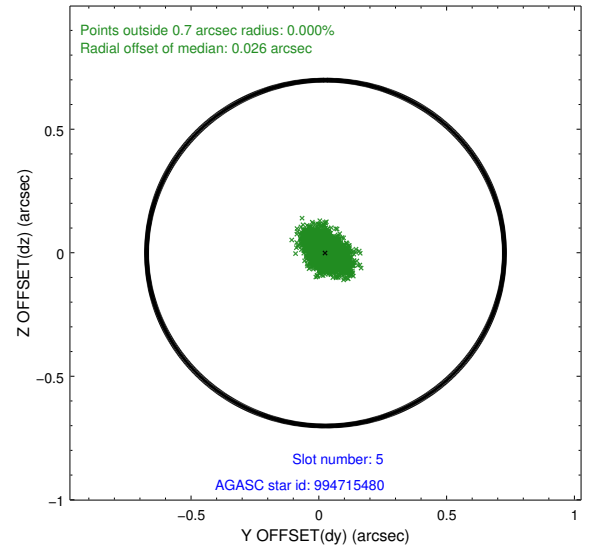
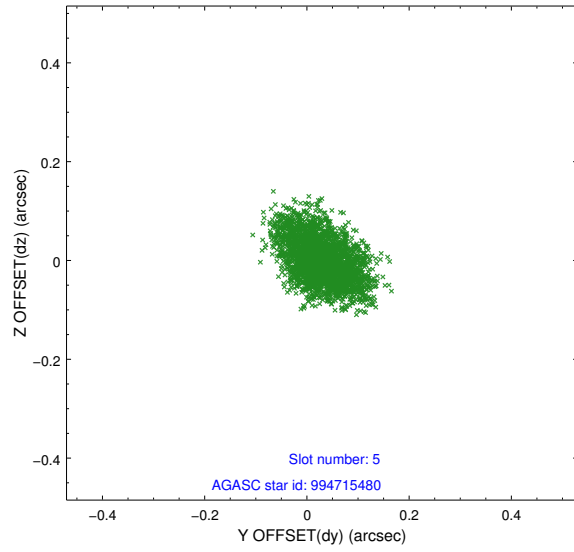
2.4.1 Slot 3



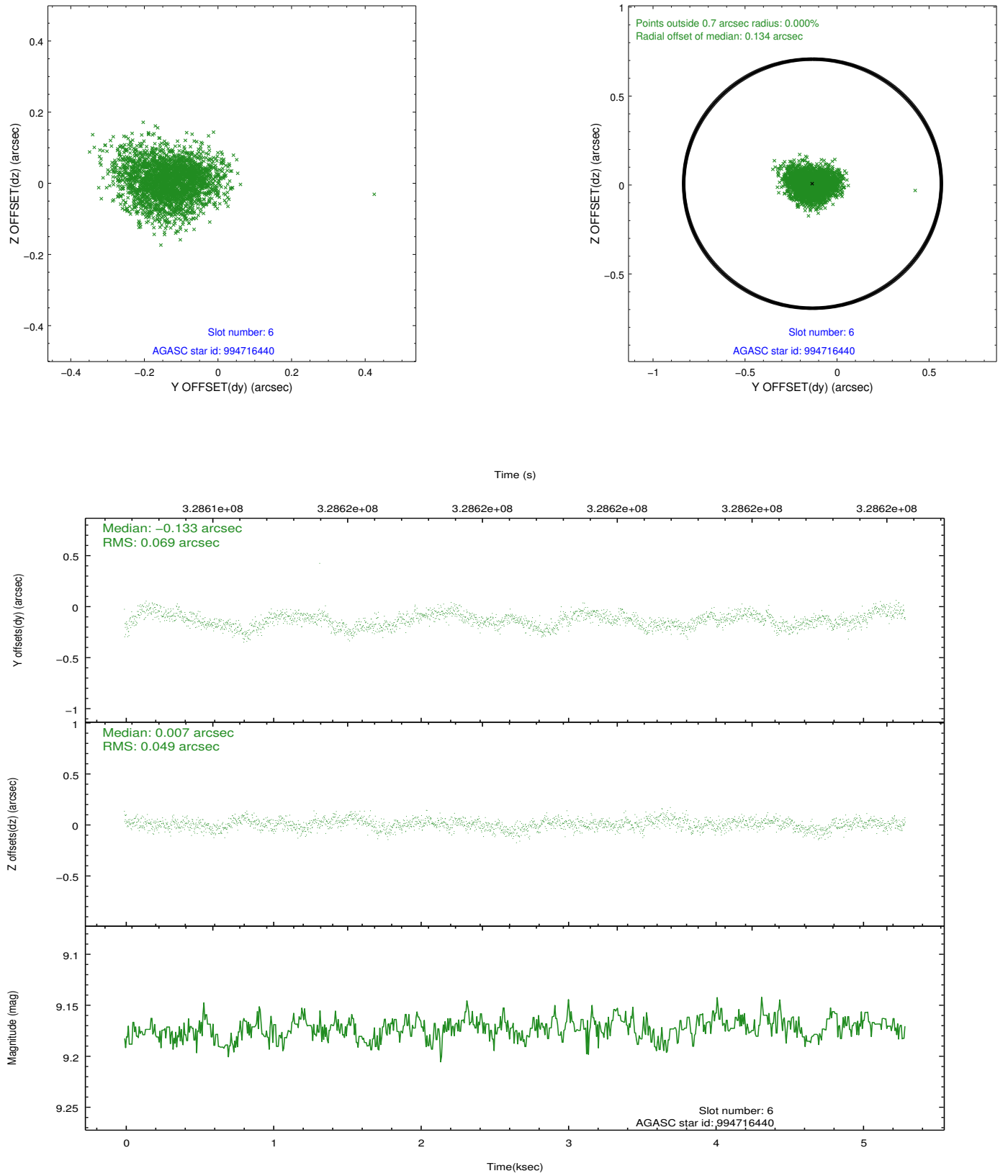
2.4.2 Slot 4



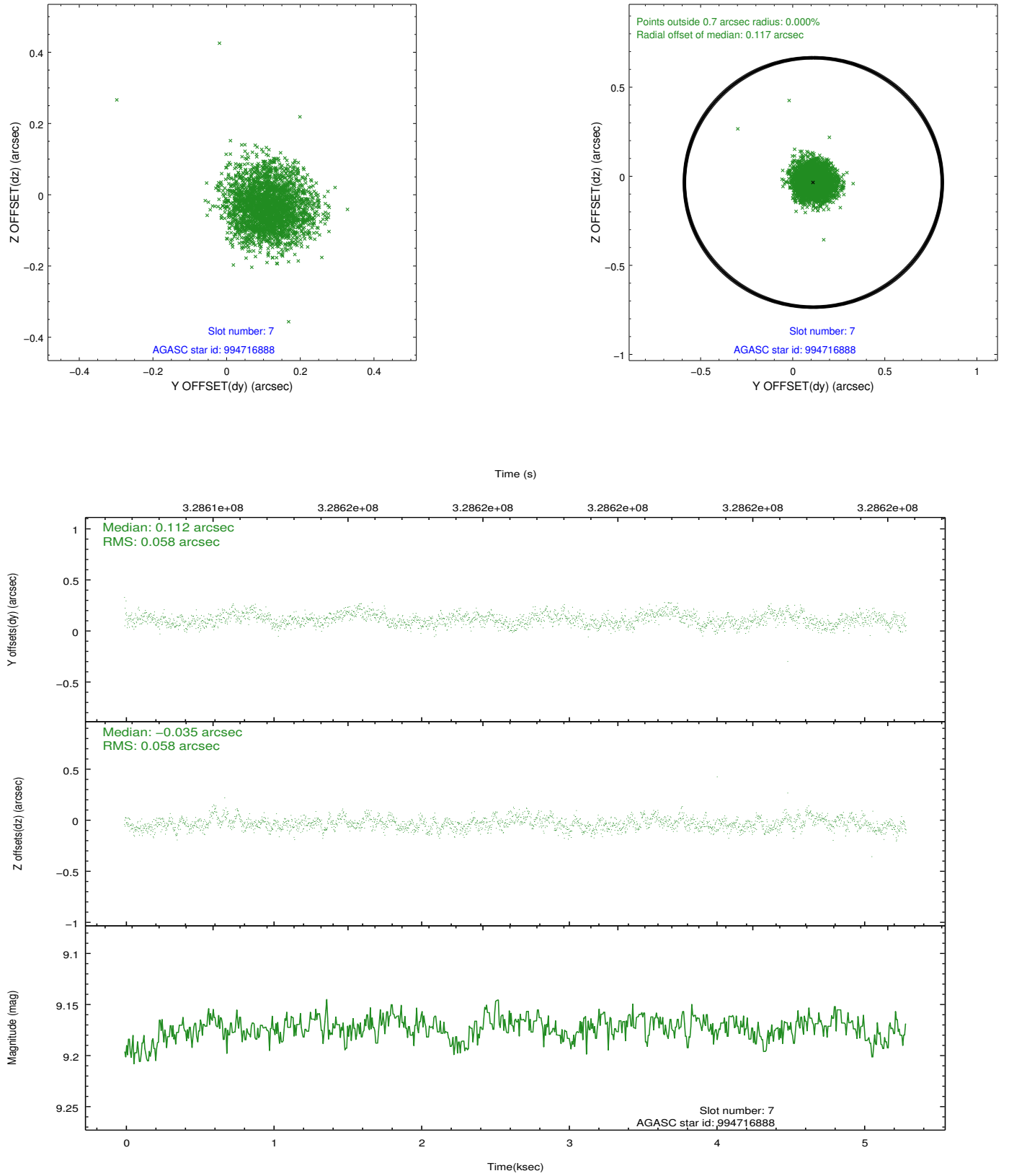
2.4.3 Slot 5



2.4.4 Slot 6

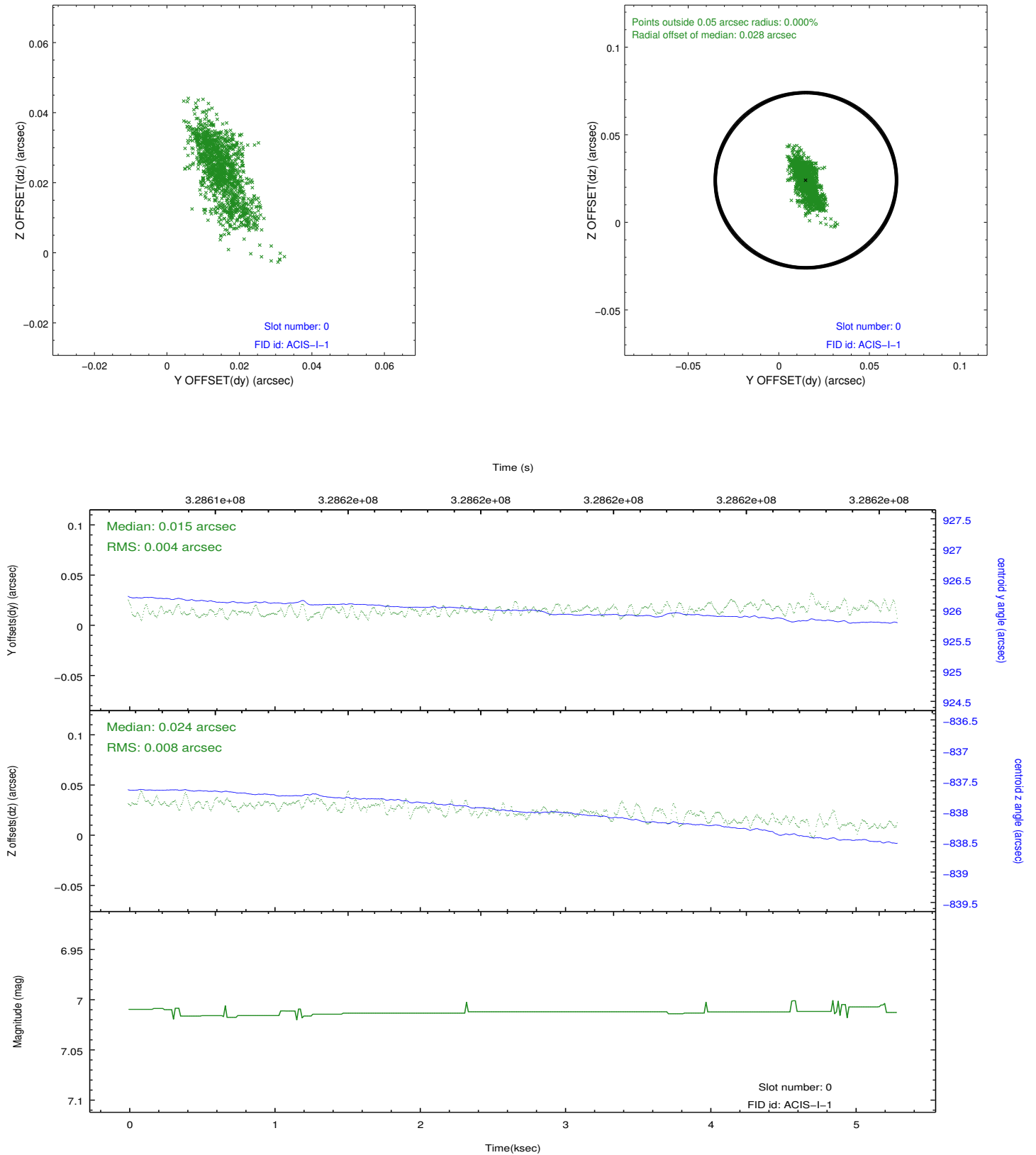


2.4.5 Slot 7

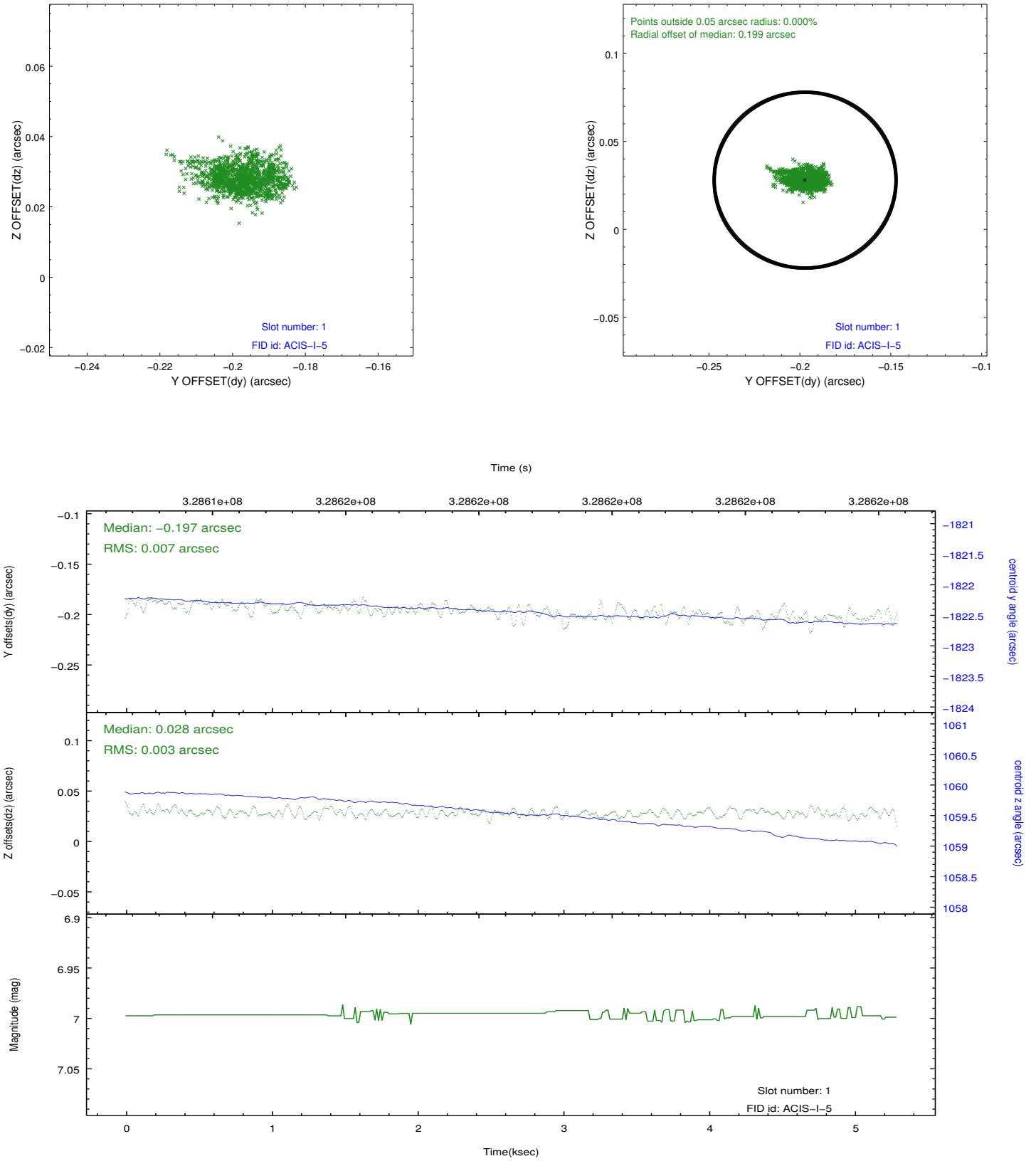


2.5 FID Slots

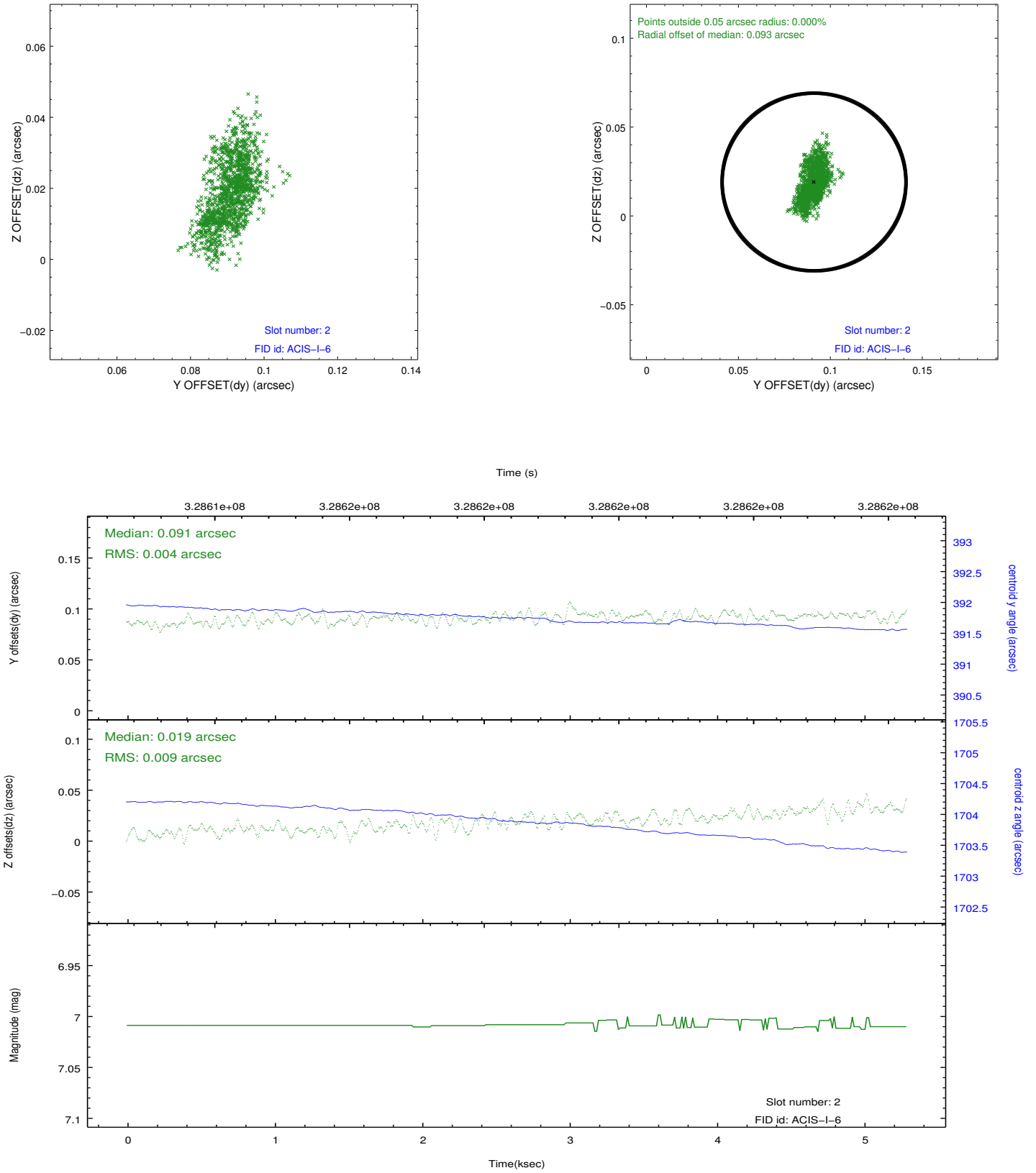
2.5.1 Slot 0



2.5.2 Slot 1



2.5.3 Slot 2



A Summary

A.1 Status

V&V Scientist	Jen Lauer
V&V Date (YYYY-MM-DD)	2012.05.21
V&V Edition	1
V&V Disposition and Status	OK
V&V Charge Time	5.04639998

A.2 Comments