

# V&V Reference Report

## L2 ASCDS Version : 8.4.4

Observation 8624 - L2 Version 2  
Chandra X-Ray Center

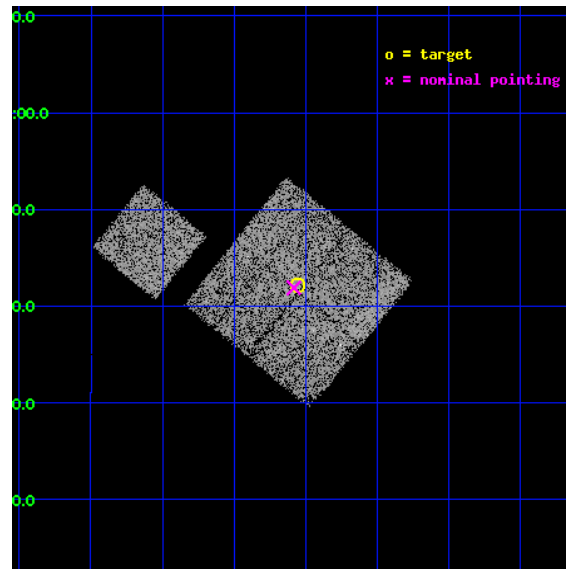
L2 Processing Date : May 5 2012

## Contents

<b>1</b>	<b>Front</b>	<b>2</b>
<b>2</b>	<b>OBI</b>	<b>3</b>
2.1	OBI . . . . .	3
2.1.1	Images . . . . .	3
2.1.2	Bias . . . . .	3
2.1.3	Parameters . . . . .	4
2.1.4	Events . . . . .	4
2.2	Compared Parameters . . . . .	5
2.3	Aspect . . . . .	6
2.4	Star Slots . . . . .	9
2.4.1	Slot 3 . . . . .	9
2.4.2	Slot 4 . . . . .	10
2.4.3	Slot 5 . . . . .	11
2.4.4	Slot 6 . . . . .	12
2.4.5	Slot 7 . . . . .	13
2.5	FID Slots . . . . .	14
2.5.1	Slot 0 . . . . .	14
2.5.2	Slot 1 . . . . .	15
2.5.3	Slot 2 . . . . .	16
<b>A</b>	<b>Summary</b>	<b>17</b>
A.1	Status . . . . .	17
A.2	Comments . . . . .	17

# 1 Front

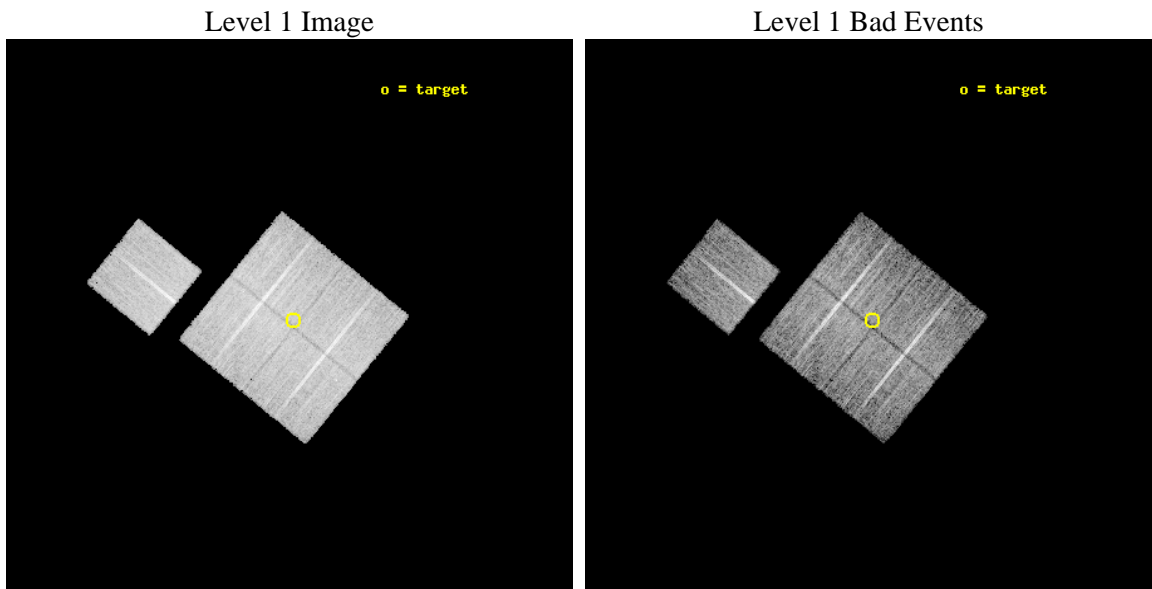
seq_num	900761	Sequence number
obs_id	8624	Observation id
title	Chandra Observations of the DEEP2 Fields	Proposal title
observer	Dr. Stephen Murray	Principal investigator
object	DEEP2 Field 4	Source name
dtcycle	0	&#160
cycle	P	events from which exps? Prim/Second/Both
ra_targ	37.63909	Observer's specified target RA [deg]
dec_targ	0.702679	Observer's specified target Dec [deg]
ra_nom	37.645823524762	Nominal RA [deg]
dec_nom	0.69826118123921	Nominal Dec [deg]
roll_nom	309.23861181062	Nominal Roll [deg]
revision	2	Processing version of data
ontime	8776.1000674963	Sum of GTIs [s]
livetime	8661.4338592436	Livetime [s]
ontime0	8772.9590771198	Sum of GTIs [s]
ontime1	8772.9590572715	Sum of GTIs [s]
ontime2	8772.9590771794	Sum of GTIs [s]
ontime3	8776.1000674963	Sum of GTIs [s]
ontime6	8772.9590771198	Sum of GTIs [s]
l2events	29945	Number of level 2 events



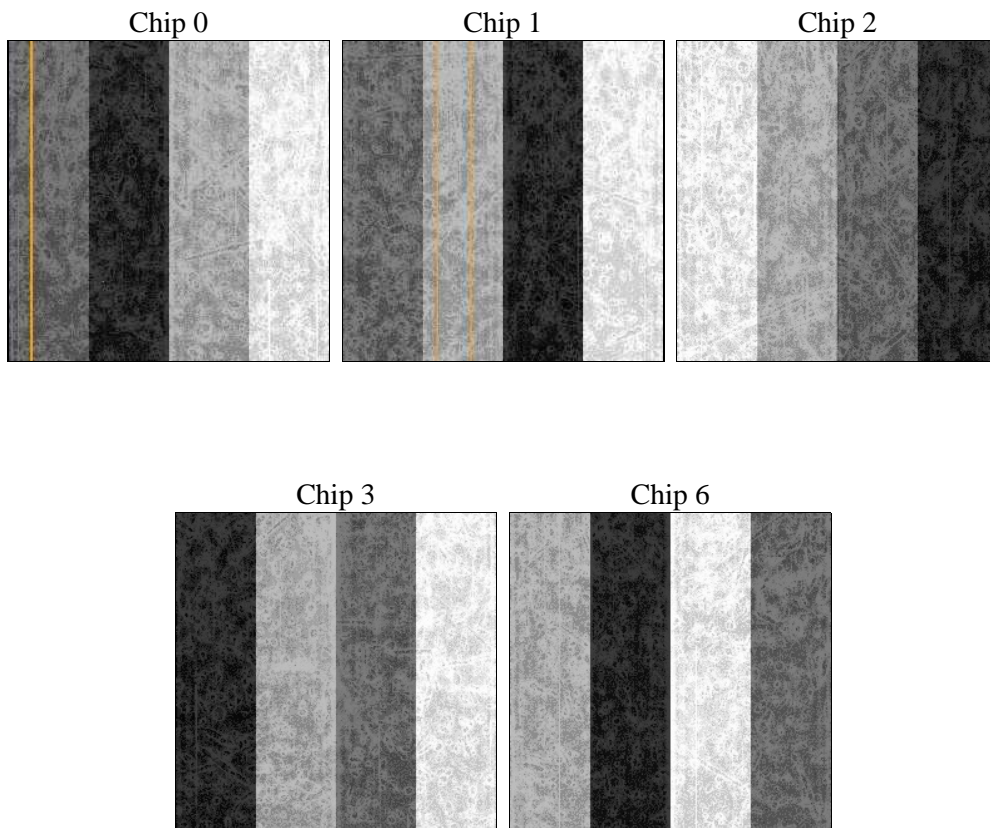
## 2 OBI

### 2.1 OBI

#### 2.1.1 Images



#### 2.1.2 Bias



### 2.1.3 Parameters

obi_num	0	Obi number	sched_exp_time	9000.000000	[s] Scheduled observation exposure time
ascdsver	8.4.4	Processing system revision	ontime	8776.1000674963	Sum of GTIs [s]
caldsver	4.4.9	&#160	ontime0	8772.9590771198	Sum of GTIs [s]
date	2012-05-05T06:52:57	Date and time of file creation	ontime1	8772.9590572715	Sum of GTIs [s]
revision	2	Processing version of data	ontime2	8772.9590771794	Sum of GTIs [s]
			ontime3	8776.1000674963	Sum of GTIs [s]
			ontime6	8772.9590771198	Sum of GTIs [s]
			l1events	354993	Number of level 1 events

### 2.1.4 Events

	ccd 0	ccd 1	ccd 2	ccd 3	ccd 6
level 1 events	67471	67701	76188	72289	71344
rejected events	60159	59873	69236	65609	64147
rejected %	89%	88%	90%	90%	89%

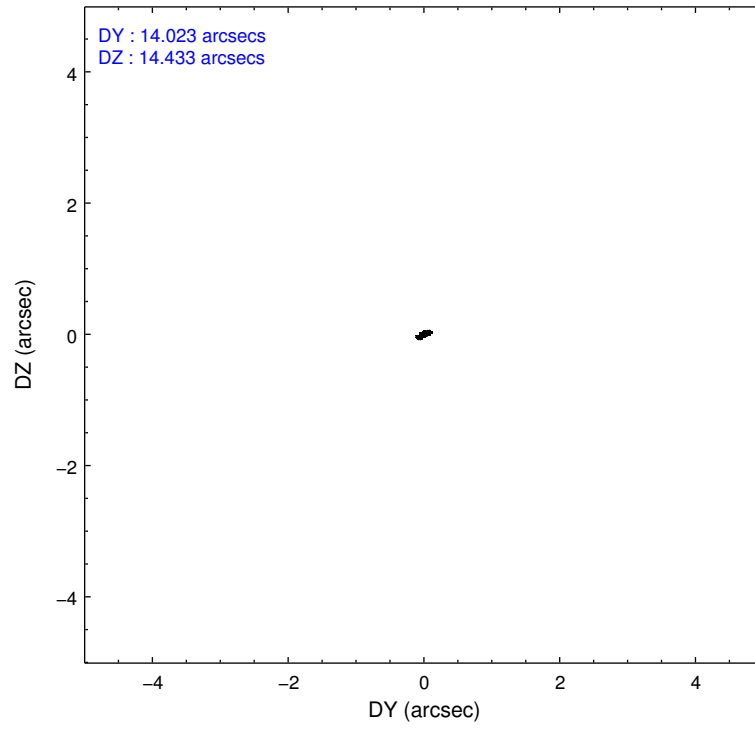
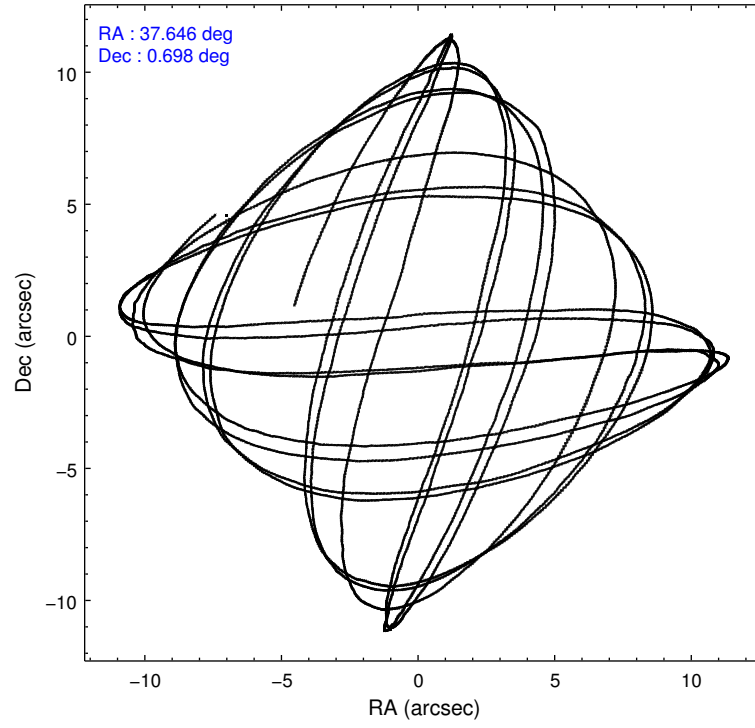
	ccd 0	ccd 1	ccd 2	ccd 3	ccd 6
grade 0 events	2630	2761	2517	2299	2489
	3%	4%	3%	3%	3%
grade 1 events	45	37	48	54	29
	0%	0%	0%	0%	0%
grade 2 events	1755	1803	1683	1480	1538
	2%	2%	2%	2%	2%
grade 3 events	793	817	755	777	793
	1%	1%	0%	1%	1%
grade 4 events	738	827	755	794	774
	1%	1%	0%	1%	1%
grade 5 events	2441	2724	2337	2870	2870
	3%	4%	3%	3%	4%
grade 6 events	1399	1624	1244	1334	1607
	2%	2%	1%	1%	2%
grade 7 events	57670	57108	66849	62681	61244
	85%	84%	87%	86%	85%

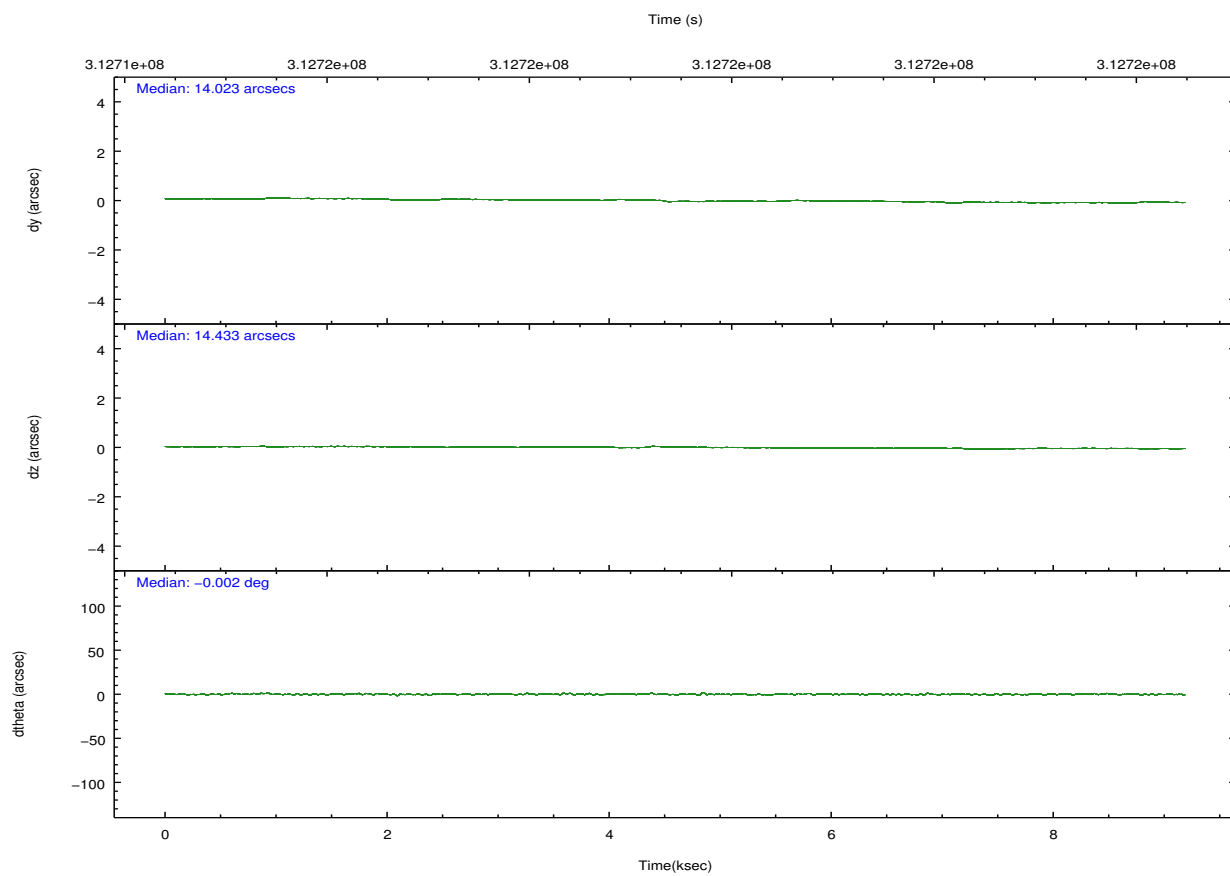
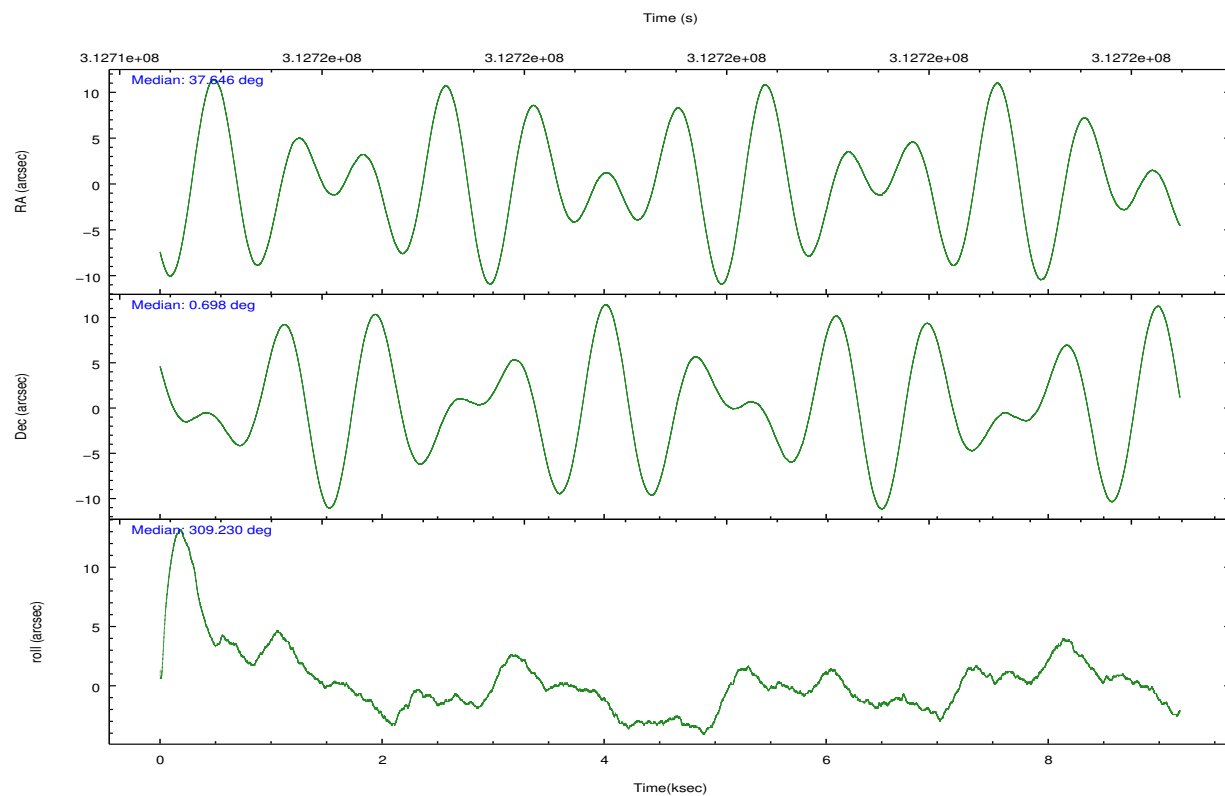


## 2.2 Compared Parameters

Parameter	Planned	Actual	Parameter	Planned	Actual
Instrument	ACIS	ACIS	Obspar format version number	7	7
Detector	ACIS-01236	ACIS-01236	Obspar file type	PREDICTED	ACTUAL
Grating	NONE	NONE	Obspar update status	NONE	UPDATED
Data mode	VFAINT	VFAINT	CCD I0 on	Y	Y
Observation mode	POINTING	POINTING	CCD I1 on	Y	Y
[deg] Pointing RA	37.620079	37.64582352476237	CCD I2 on	Y	Y
[deg] Pointing Dec	0.707865	0.6982611812392063	CCD I3 on	Y	Y
[deg] Pointing Roll	309.030240	309.2386118106175	CCD S0 on	N	N
[mm] SIM focus pos	-0.782348	-0.7809083437167272	CCD S1 on	N	N
[mm] SIM defocus	0	0.001439871863259334	CCD S2 on	O1	Y
[mm] SIM translation stage pos	-233.592463	-233.5874344608287	CCD S3 on	N	N
[mm] SIM translation stage offset	0	-0.005018542100998502	CCD S4 on	N	N
[s] Observation start time (MET)	312715035.184000	312714659.3416	CCD S5 on	N	N
Observation start date	2007-11-29T09:16:10	2007-11-29T09:10:59	Number of optional ACIS chips dropped	0	0
[s] Observation end time (MET)	312724035.184000	312724168.77956	On-chip summing requested	N	N
Observation end date	2007-11-29T11:46:10	2007-11-29T11:49:28	Subarray requested	NONE	NONE
Read mode	TIMED	TIMED	Alternating exposures requested	N	N
			[s] Primary exposure time	0.000000	3.1

## 2.3 Aspect



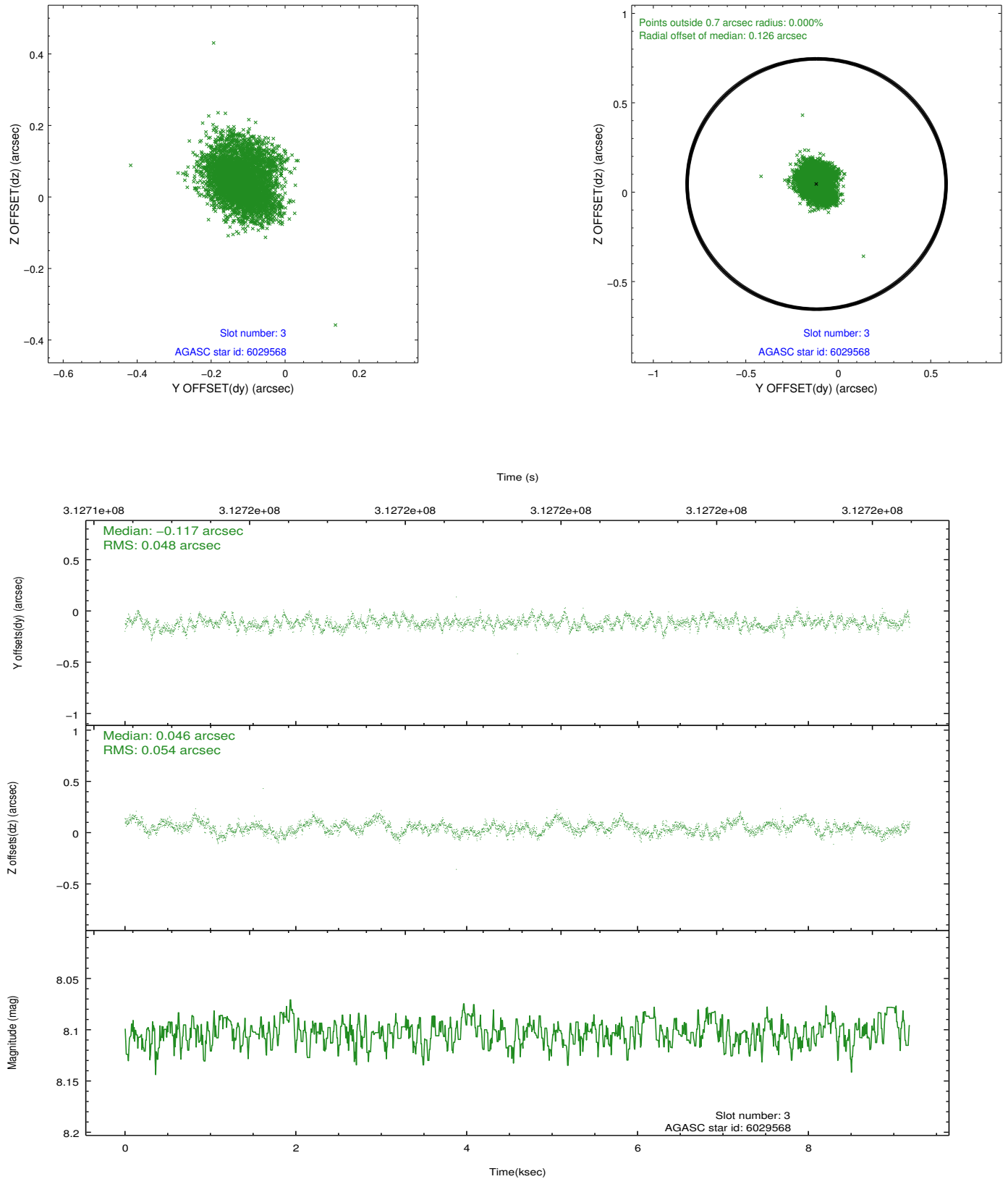


### Slot Statistics

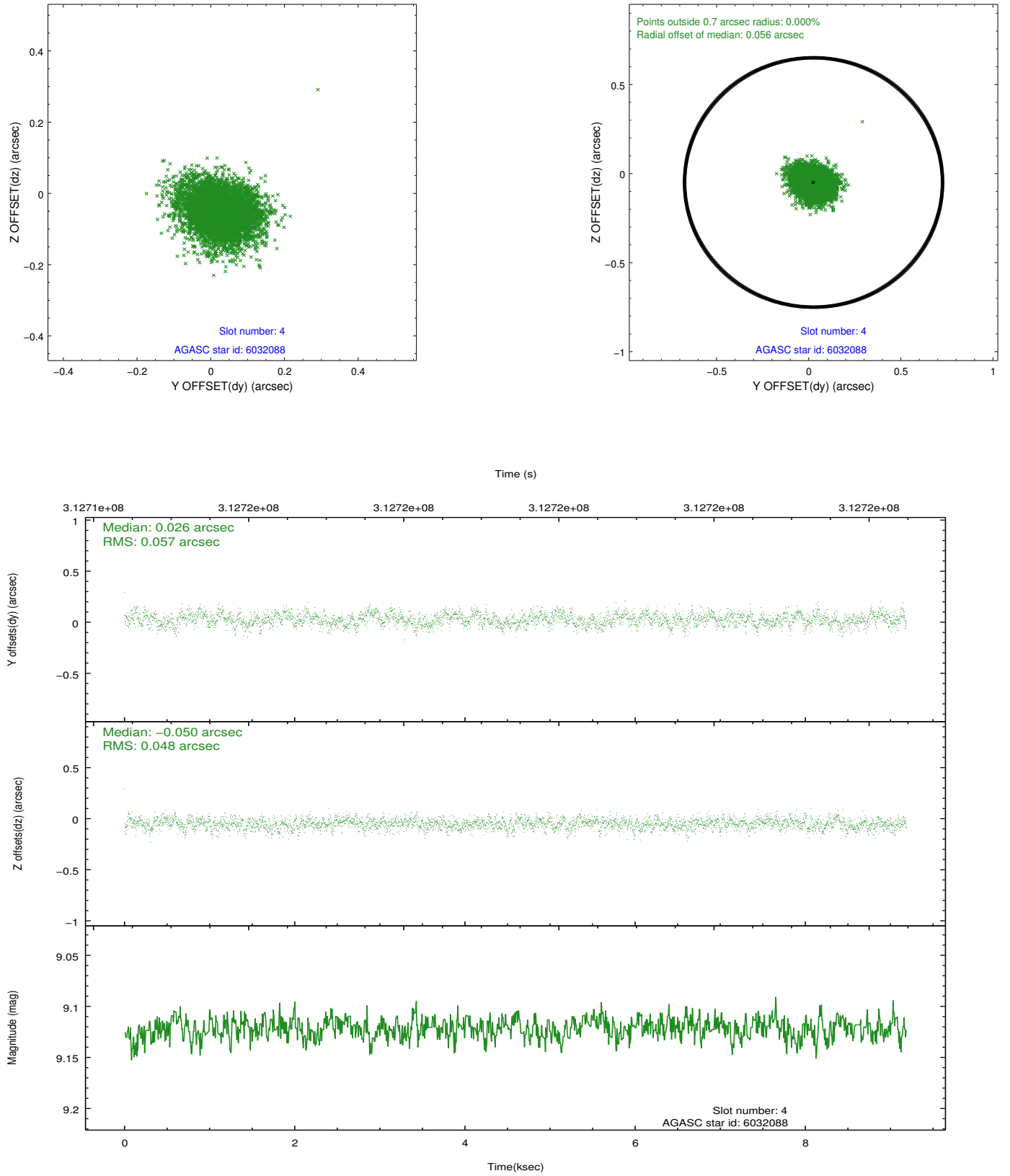
slot	status	id	mag	n_pts	med_dy	med_dz	dr1	dr2	ra	dec	mean_y	mean_z
0	FID	ACIS-I-1	7.24	2241	0.033	0.003	0.007	0.011	0.000000	0.000000	925.51	-838.00
1	FID	ACIS-I-5	7.23	2241	-0.230	0.035	0.006	0.011	0.000000	0.000000	-1822.56	1059.20
2	FID	ACIS-I-6	7.24	2241	0.105	0.033	0.007	0.012	0.000000	0.000000	390.45	1704.39
3	GUIDE	6029568	8.10	4481	-0.117	0.046	0.077	0.125	37.819248	1.515561	-1807.58	2387.92
4	GUIDE	6032088	9.12	4479	0.026	-0.050	0.079	0.129	37.532714	0.102881	1494.15	-1615.02
5	GUIDE	6033288	9.00	4481	0.074	-0.075	0.099	0.156	37.919400	0.743225	580.08	916.94
6	GUIDE	6042384	6.40	4482	0.066	-0.002	0.079	0.134	37.688348	0.255749	1419.86	-834.06
7	GUIDE	6034024	9.67	4476	-0.050	0.087	0.135	0.207	37.505848	1.160303	-1523.68	706.17

## 2.4 Star Slots

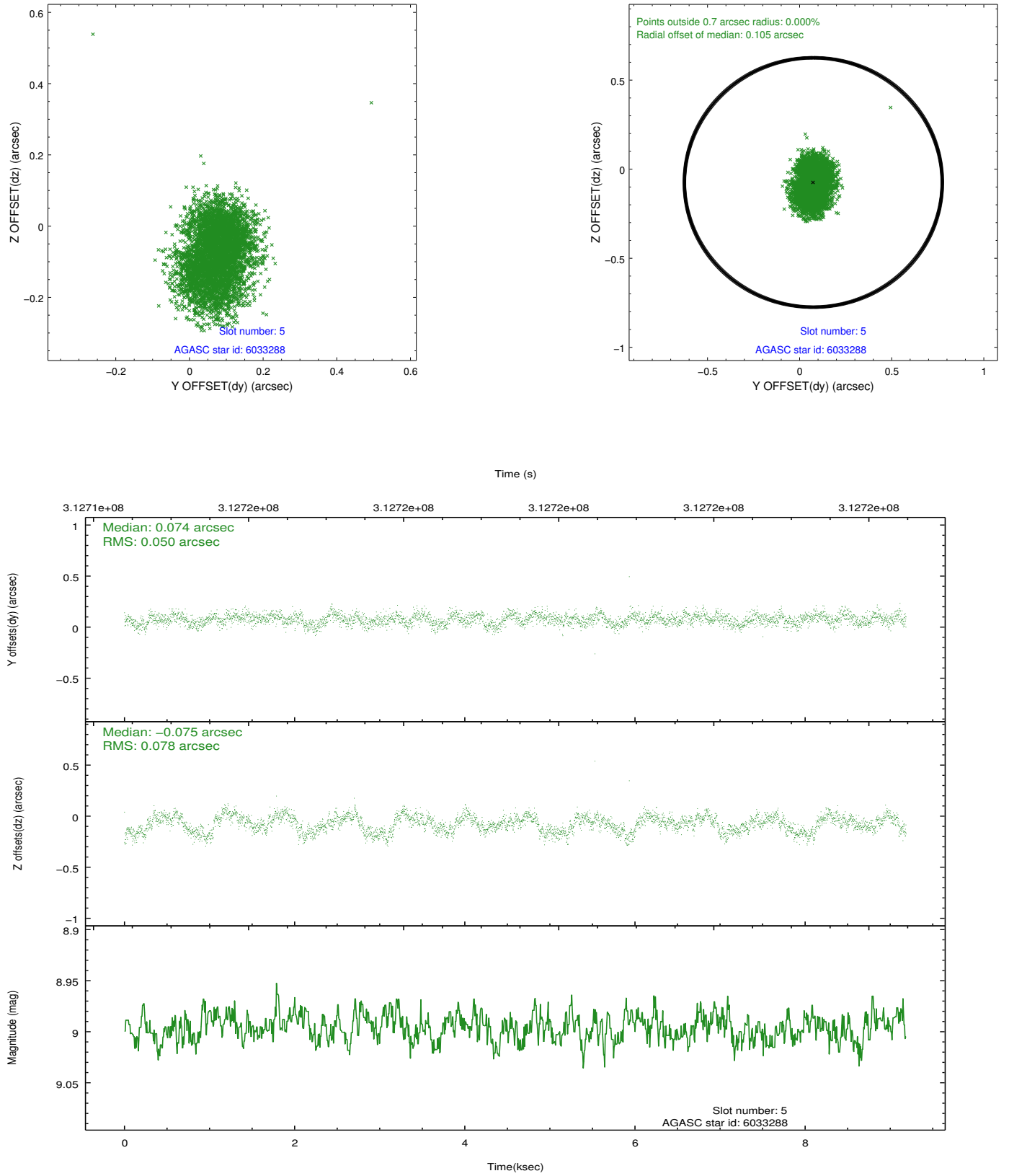
### 2.4.1 Slot 3



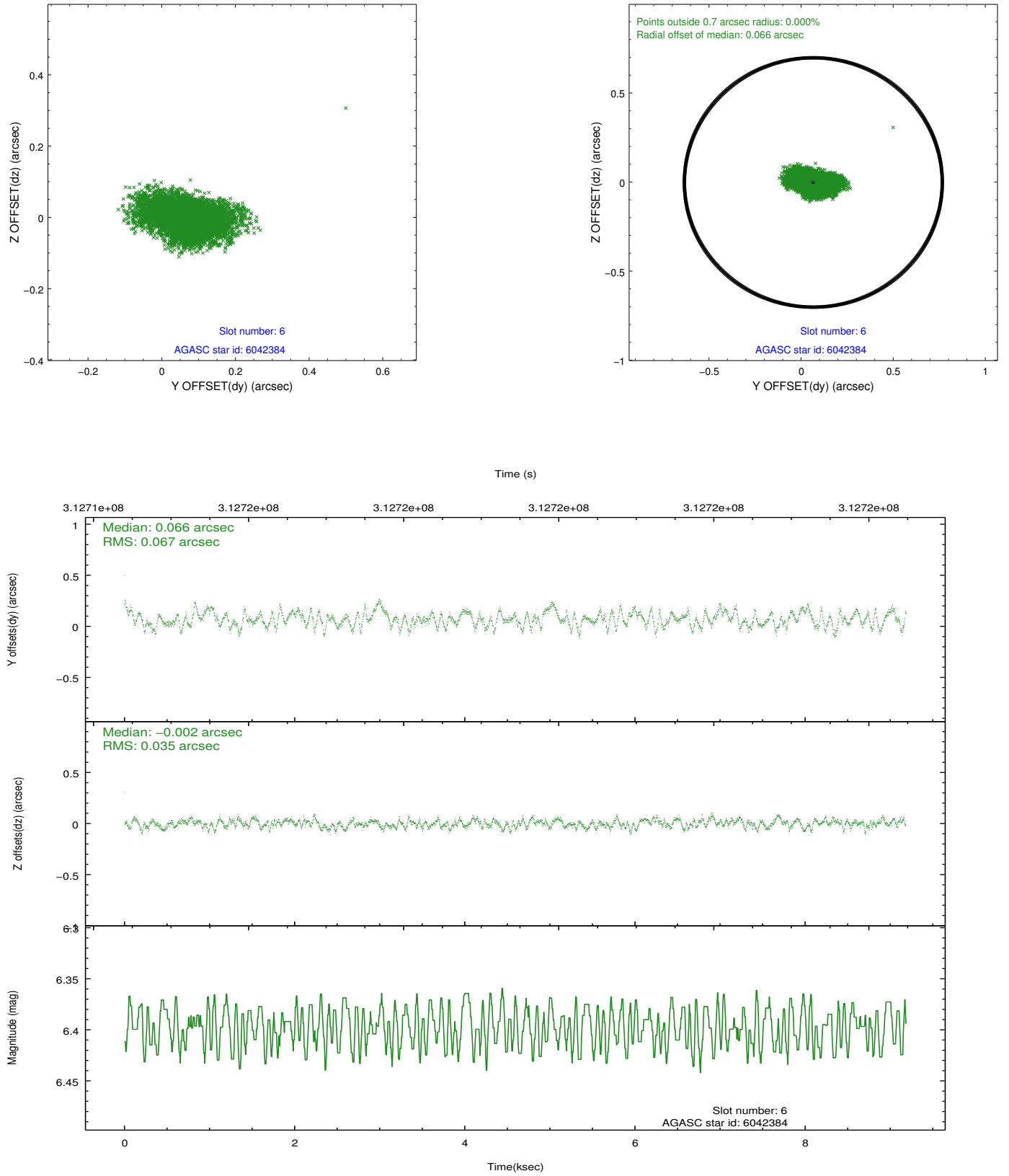
## 2.4.2 Slot 4



### 2.4.3 Slot 5

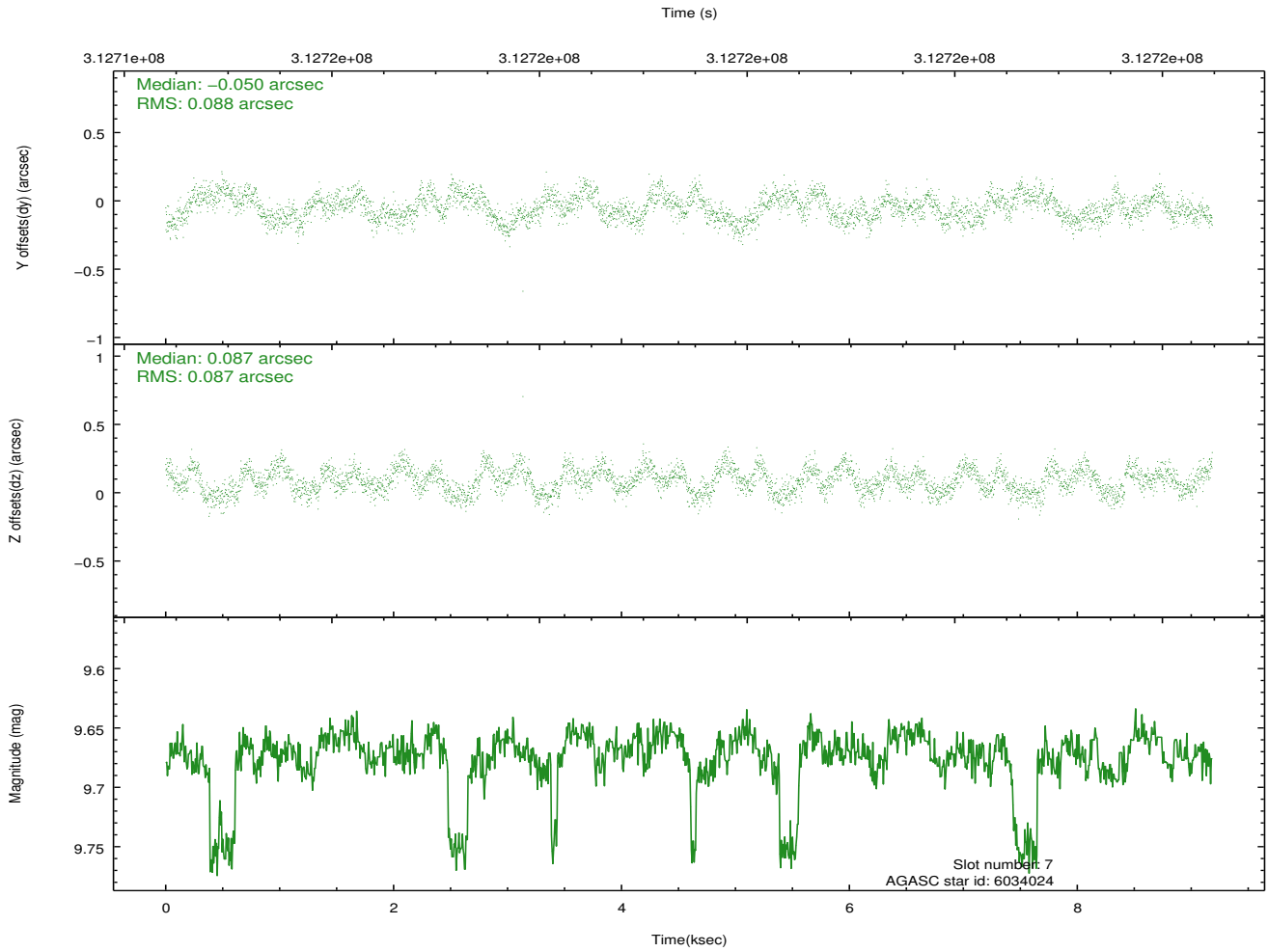
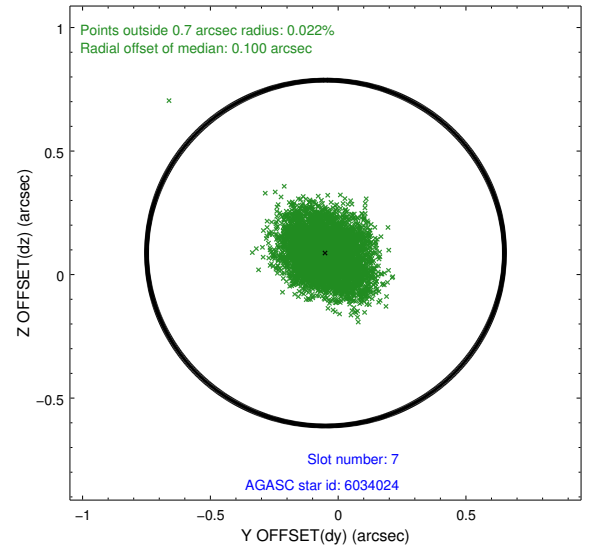
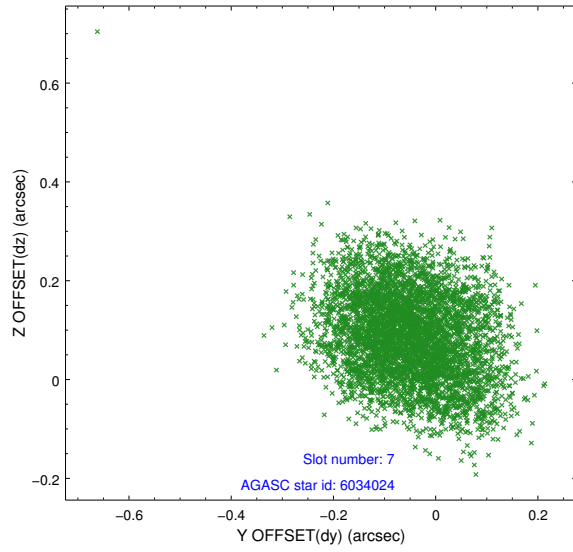


## 2.4.4 Slot 6



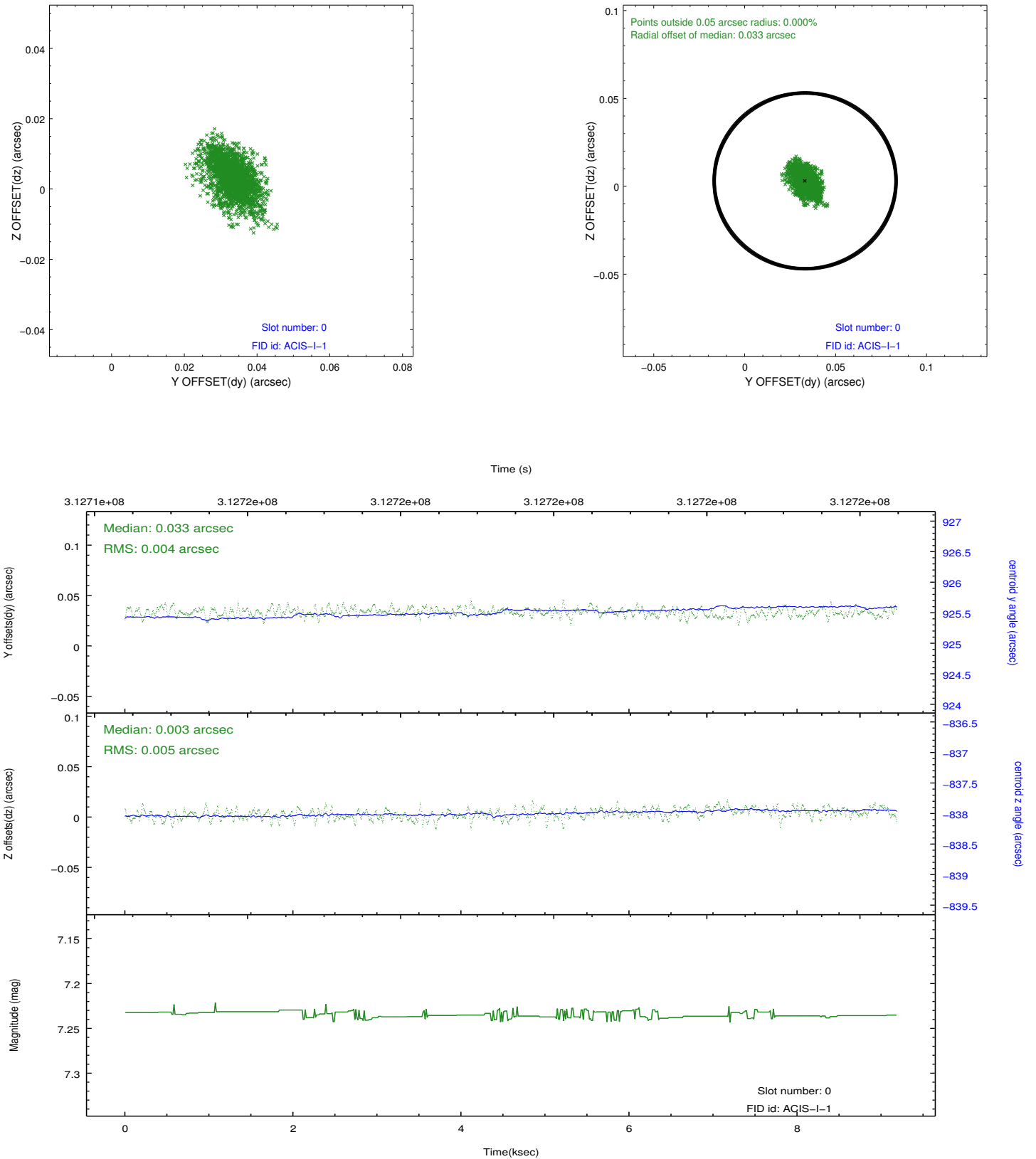


## 2.4.5 Slot 7

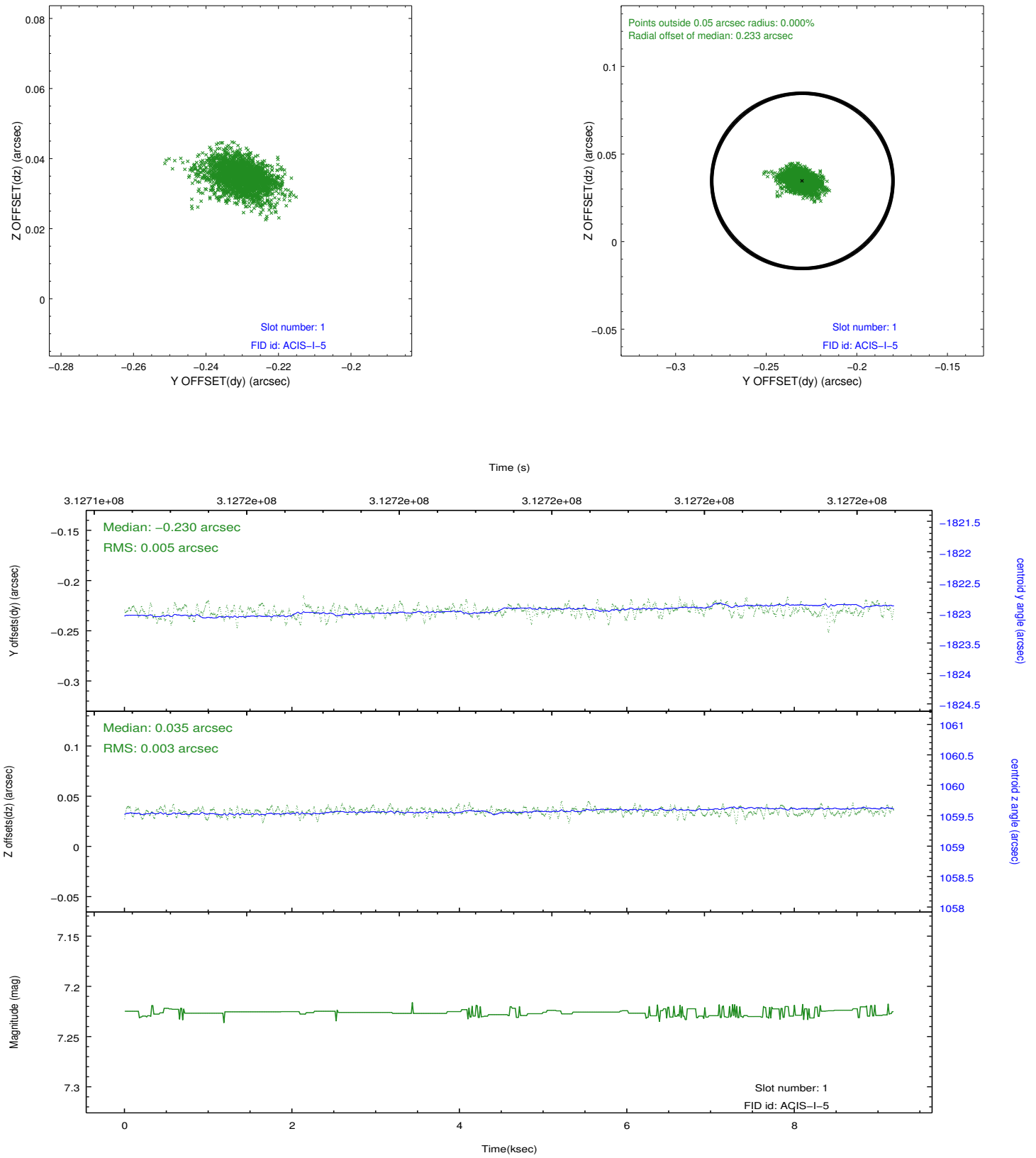


## 2.5 FID Slots

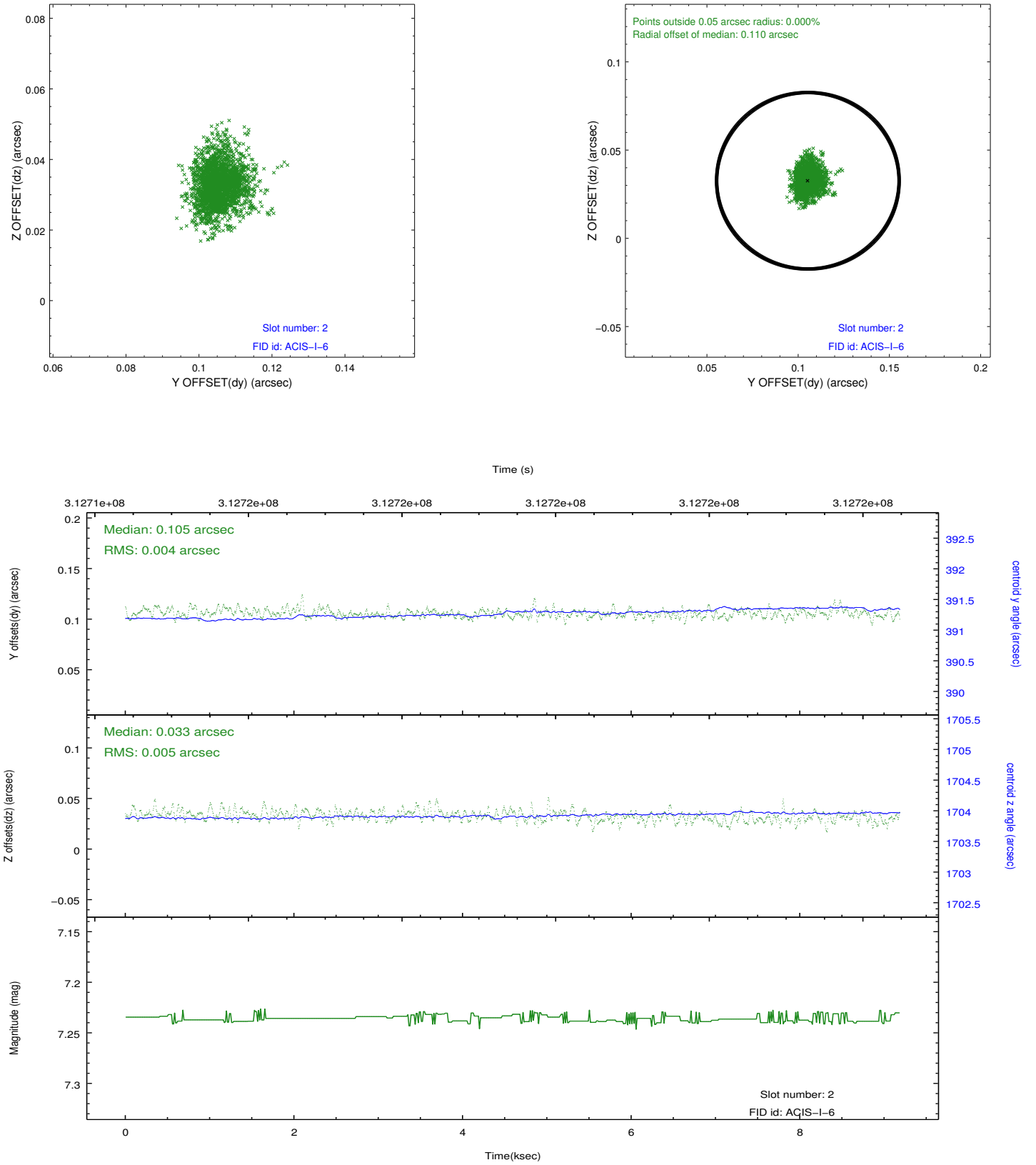
### 2.5.1 Slot 0



## 2.5.2 Slot 1



### 2.5.3 Slot 2



## **A Summary**

### **A.1 Status**

V&V Scientist	Jen Lauer
V&V Date (YYYY-MM-DD)	2012.05.07
V&V Edition	1
V&V Disposition and Status	OK
V&V Charge Time	8.77610006

### **A.2 Comments**