

V&V Reference Report

L2 ASCDS Version : 8.4.4

Observation 8604 - L2 Version 2
Chandra X-Ray Center

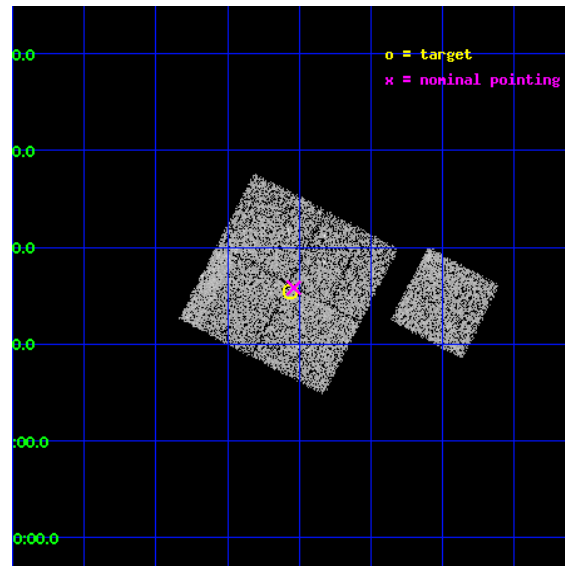
L2 Processing Date : May 19 2012

Contents

1	Front	2
2	OBI	3
2.1	OBI	3
2.1.1	Images	3
2.1.2	Bias	3
2.1.3	Parameters	4
2.1.4	Events	4
2.2	Compared Parameters	5
2.3	Aspect	6
2.4	Star Slots	9
2.4.1	Slot 3	9
2.4.2	Slot 4	10
2.4.3	Slot 5	11
2.4.4	Slot 6	12
2.4.5	Slot 7	13
2.5	FID Slots	14
2.5.1	Slot 0	14
2.5.2	Slot 1	15
2.5.3	Slot 2	16
A	Summary	17
A.1	Status	17
A.2	Comments	17

1 Front

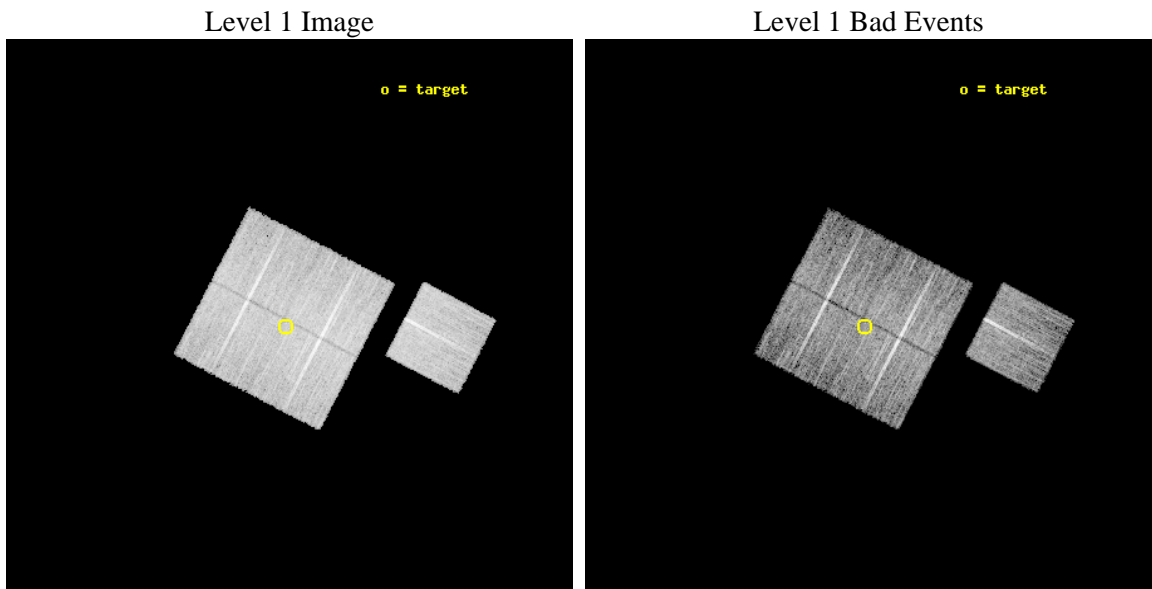
seq_num	900741	Sequence number
obs_id	8604	Observation id
title	Chandra Observations of the DEEP2 Fields	Proposal title
observer	Dr. Stephen Murray	Principal investigator
object	DEEP2 Field 3	Source name
dtcycle	0	
cycle	P	events from which exps? Prim/Second/Both
ra_targ	351.64001	Observer's specified target RA [deg]
dec_targ	0.257722	Observer's specified target Dec [deg]
ra_nom	351.6343430448	Nominal RA [deg]
dec_nom	0.26346804993952	Nominal Dec [deg]
roll_nom	117.50871720849	Nominal Roll [deg]
revision	2	Processing version of data
ontime	8955.9000688791	Sum of GTIs [s]
livetime	8838.8846412415	Livetime [s]
ontime0	8955.9000688791	Sum of GTIs [s]
ontime1	8955.9000688791	Sum of GTIs [s]
ontime2	8955.9000688791	Sum of GTIs [s]
ontime3	8955.9000688791	Sum of GTIs [s]
ontime6	8955.9000688791	Sum of GTIs [s]
l2events	31499	Number of level 2 events



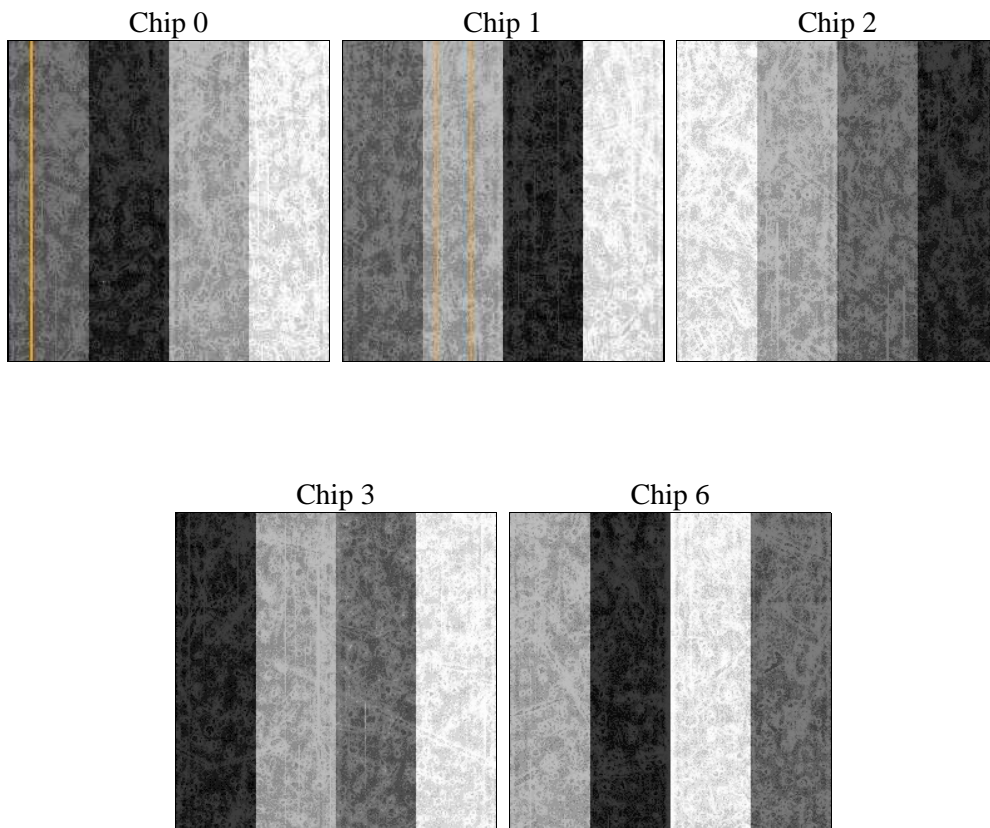
2 OBI

2.1 OBI

2.1.1 Images



2.1.2 Bias



2.1.3 Parameters

obi_num	0	Obi number	sched_exp_time	8771.000000	[s] Scheduled observation exposure time
ascdsver	8.4.4	Processing system revision	ontime	8955.9000688791	Sum of GTIs [s]
caldsver	4.4.9	 	ontime0	8955.9000688791	Sum of GTIs [s]
date	2012-05-19T02:10:47	Date and time of file creation	ontime1	8955.9000688791	Sum of GTIs [s]
revision	2	Processing version of data	ontime2	8955.9000688791	Sum of GTIs [s]
			ontime3	8955.9000688791	Sum of GTIs [s]
			ontime6	8955.9000688791	Sum of GTIs [s]
			l1events	379096	Number of level 1 events

2.1.4 Events

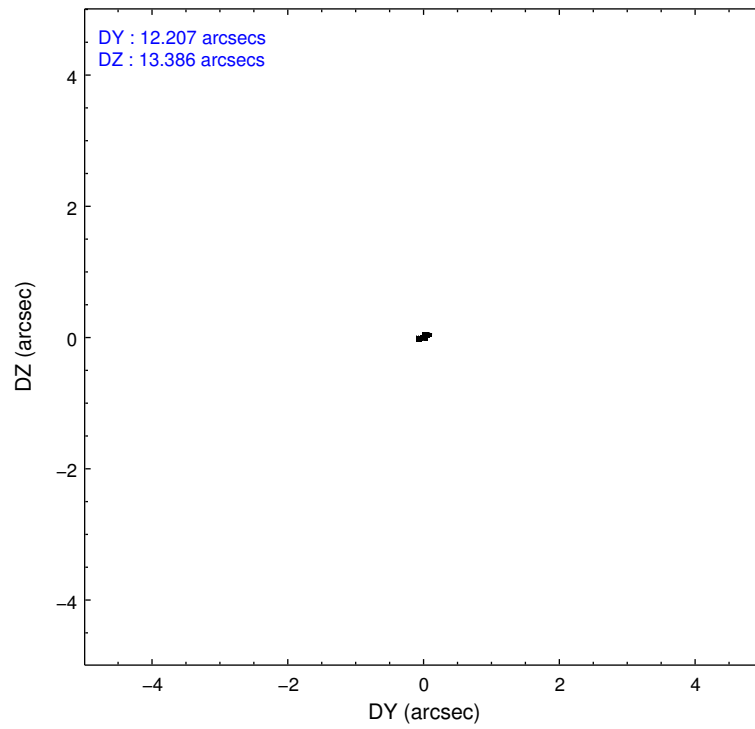
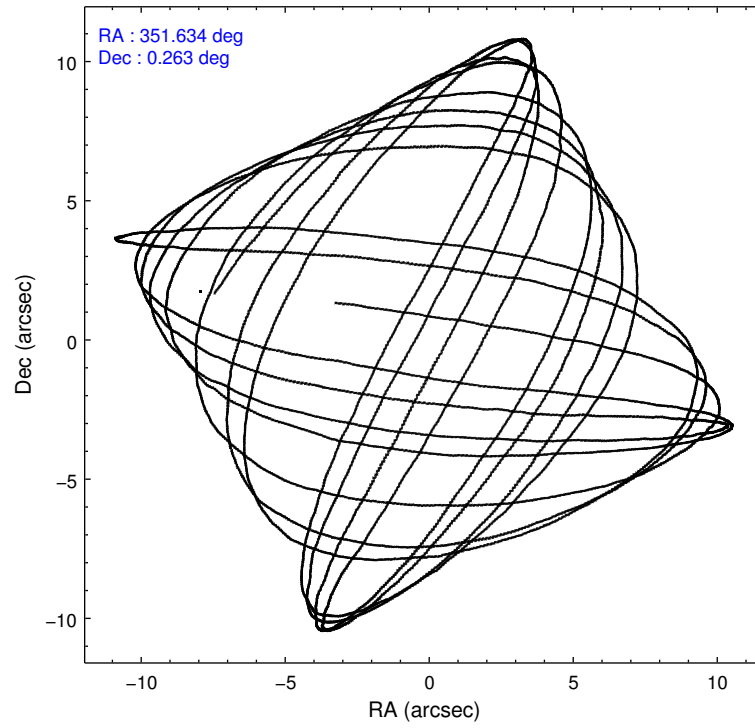
	ccd 0	ccd 1	ccd 2	ccd 3	ccd 6
level 1 events	69859	71788	82722	78007	76720
rejected events	62399	63337	75456	70986	69140
rejected %	89%	88%	91%	90%	90%

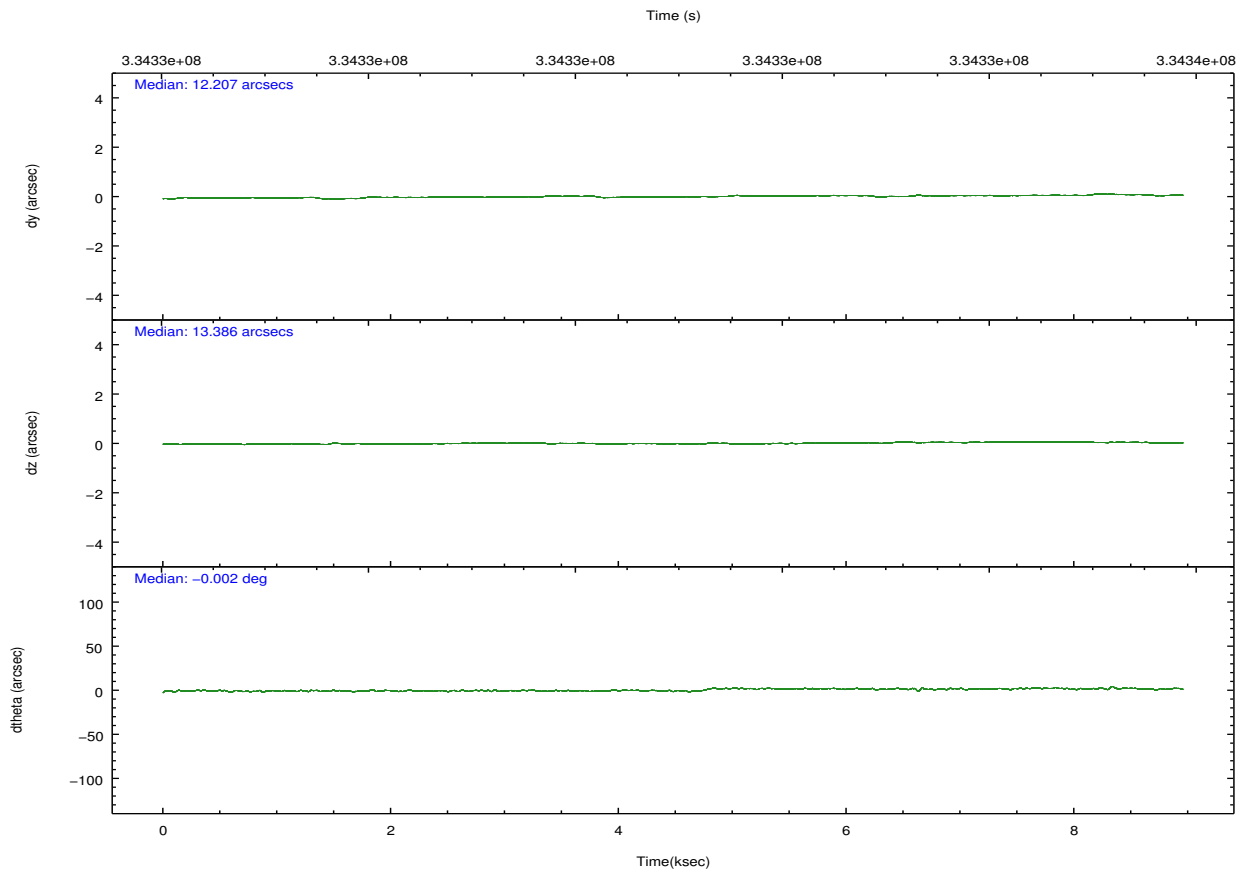
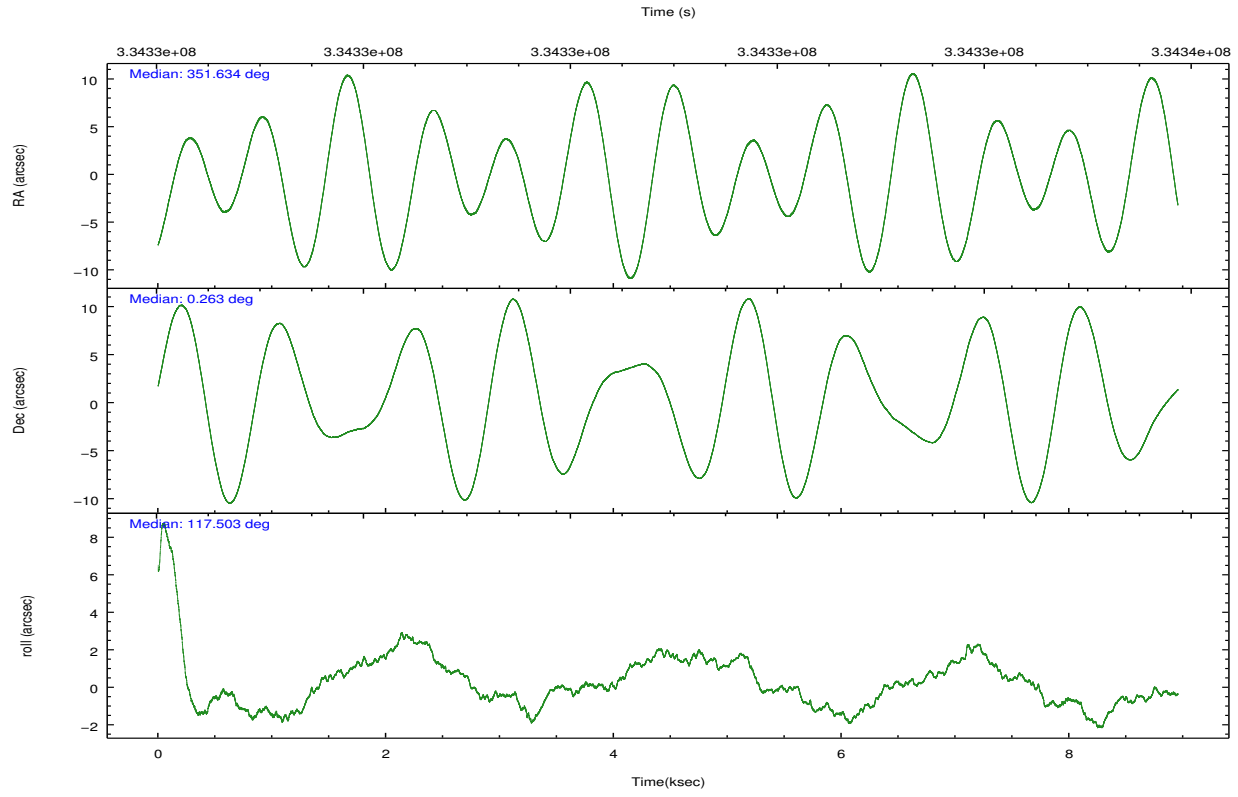
	ccd 0	ccd 1	ccd 2	ccd 3	ccd 6
grade 0 events	2703	3201	2671	2620	2715
	3%	4%	3%	3%	3%
grade 1 events	46	36	42	46	45
	0%	0%	0%	0%	0%
grade 2 events	1828	1957	1817	1634	1640
	2%	2%	2%	2%	2%
grade 3 events	931	939	791	796	877
	1%	1%	0%	1%	1%
grade 4 events	829	896	854	792	877
	1%	1%	1%	1%	1%
grade 5 events	2741	3038	2617	3171	3194
	3%	4%	3%	4%	4%
grade 6 events	1498	1790	1449	1481	1796
	2%	2%	1%	1%	2%
grade 7 events	59283	59931	72481	67467	65576
	84%	83%	87%	86%	85%

2.2 Compared Parameters

Parameter	Planned	Actual	Parameter	Planned	Actual
Instrument	ACIS	ACIS	Obspar format version number	7	7
Detector	ACIS-01236	ACIS-01236	Obspar file type	PREDICTED	ACTUAL
Grating	NONE	NONE	Obspar update status	NONE	UPDATED
Data mode	VFAINT	VFAINT	CCD I0 on	Y	Y
Observation mode	POINTING	POINTING	CCD I1 on	Y	Y
[deg] Pointing RA	351.657572	351.6343430448003	CCD I2 on	Y	Y
[deg] Pointing Dec	0.248775	0.2634680499395182	CCD I3 on	Y	Y
[deg] Pointing Roll	117.299921	117.5087172084859	CCD S0 on	N	N
[mm] SIM focus pos	-0.782348	-0.7809083437167272	CCD S1 on	N	N
[mm] SIM defocus	0	0.001439871863259334	CCD S2 on	O1	Y
[mm] SIM translation stage pos	-233.592463	-233.5874344608287	CCD S3 on	N	N
[mm] SIM translation stage offset	0	-0.005018542100998502	CCD S4 on	N	N
[s] Observation start time (MET)	334326652.184000	334326242.14337	CCD S5 on	N	N
Observation start date	2008-08-05T12:29:47	2008-08-05T12:24:02	Number of optional ACIS chips dropped	0	0
[s] Observation end time (MET)	334335423.184000	334335589.63132	On-chip summing requested	N	N
Observation end date	2008-08-05T14:55:58	2008-08-05T14:59:49	Subarray requested	NONE	NONE
Read mode	TIMED	TIMED	Alternating exposures requested	N	N
			[s] Primary exposure time	0.000000	3.1

2.3 Aspect



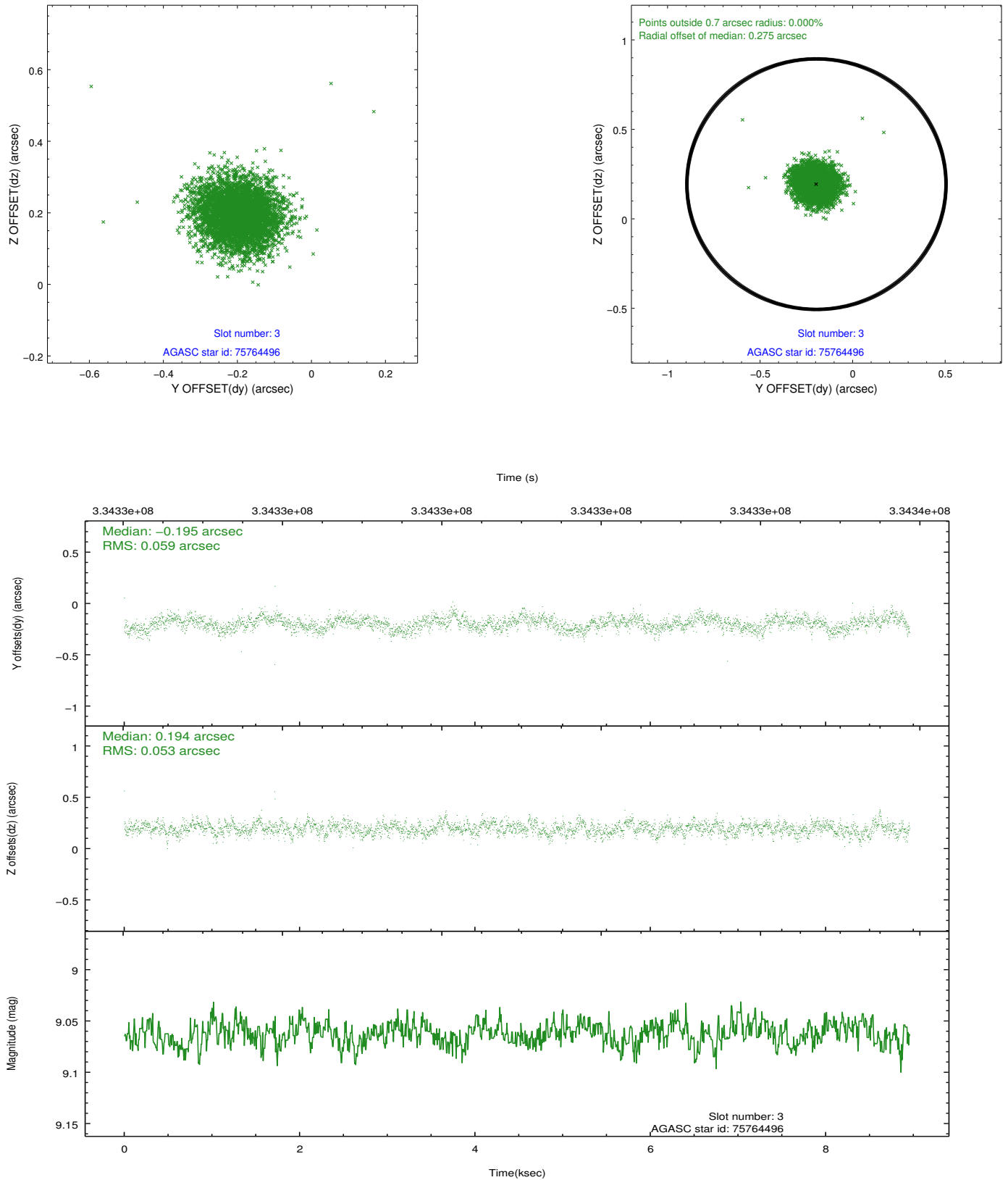


Slot Statistics

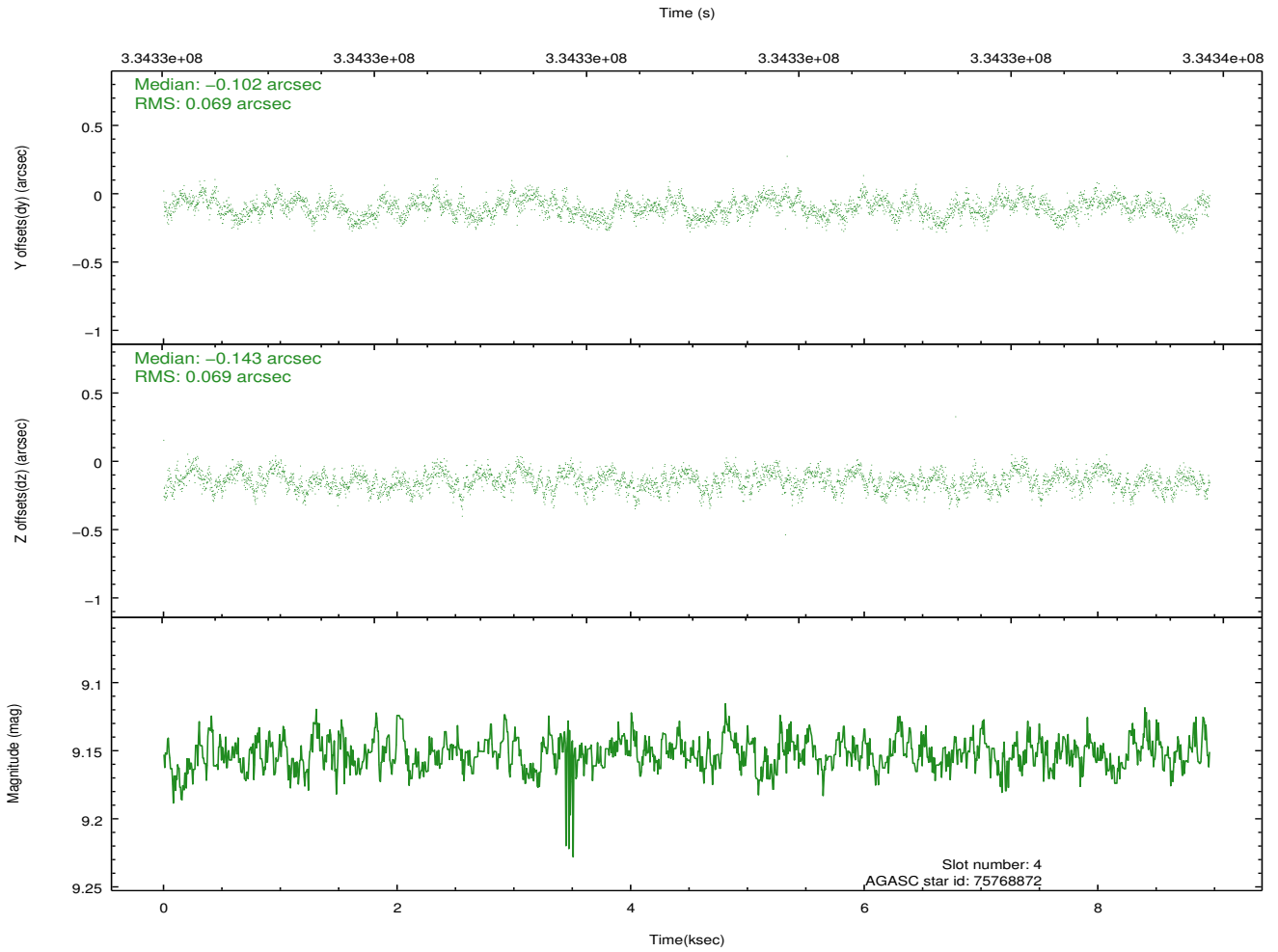
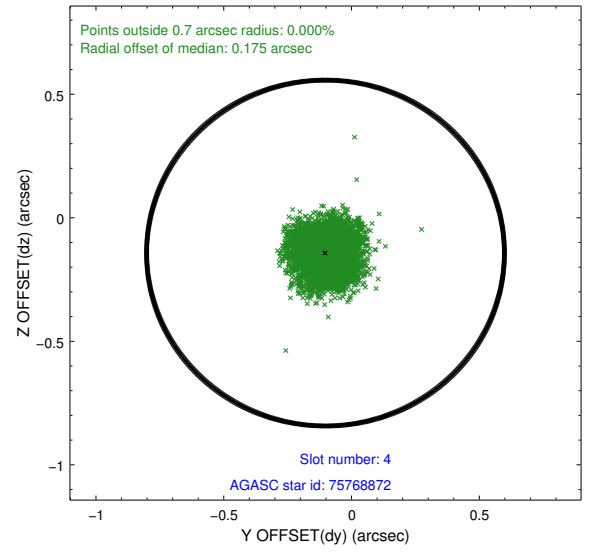
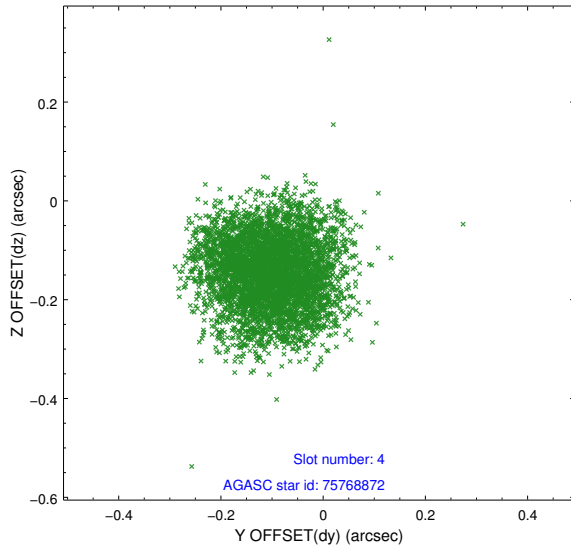
slot	status	id	mag	n_pts	med_dy	med_dz	dr1	dr2	ra	dec	mean_y	mean_z
0	FID	ACIS-I-1	7.05	2185	-0.038	0.023	0.019	0.031	0.000000	0.000000	927.29	-836.92
1	FID	ACIS-I-4	6.98	2184	0.130	0.027	0.016	0.026	0.000000	0.000000	2147.84	1062.58
2	FID	ACIS-I-5	7.03	2185	-0.190	0.021	0.011	0.019	0.000000	0.000000	-1820.08	1061.12
3	GUIDE	75764496	9.06	4367	-0.195	0.194	0.084	0.135	351.852841	0.722290	1192.42	-1405.64
4	GUIDE	75768872	9.15	4365	-0.102	-0.143	0.106	0.162	350.987165	0.298741	1266.54	2062.09
5	GUIDE	687346848	8.76	4369	0.083	-0.042	0.085	0.135	351.544424	-0.463235	-2090.61	1538.27
6	GUIDE	687347656	9.59	4364	0.118	0.107	0.106	0.171	352.228641	-0.041094	-1870.27	-1347.38
7	GUIDE	687348152	9.43	4367	0.098	-0.115	0.105	0.167	351.554637	-0.505254	-2242.44	1574.33

2.4 Star Slots

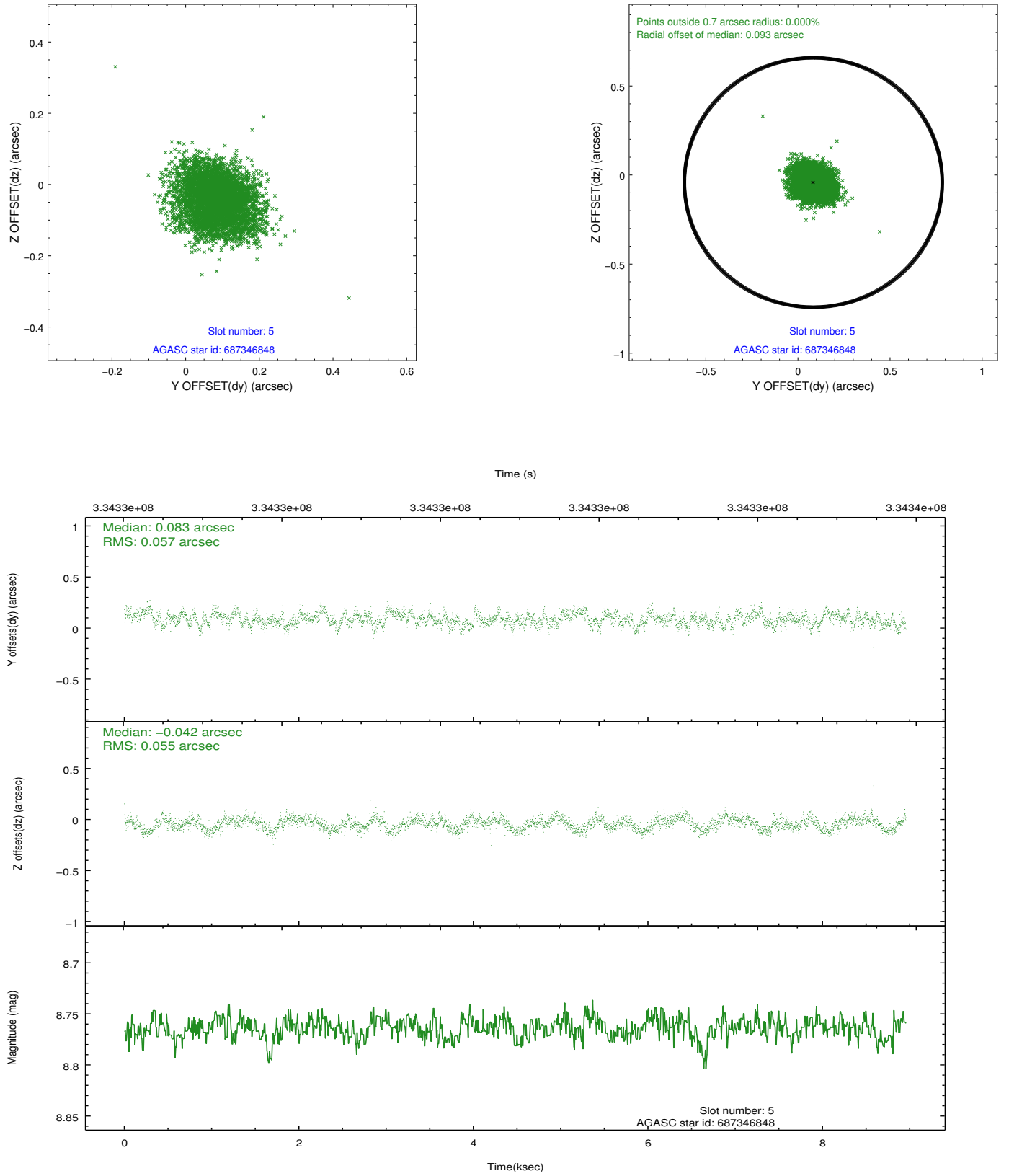
2.4.1 Slot 3



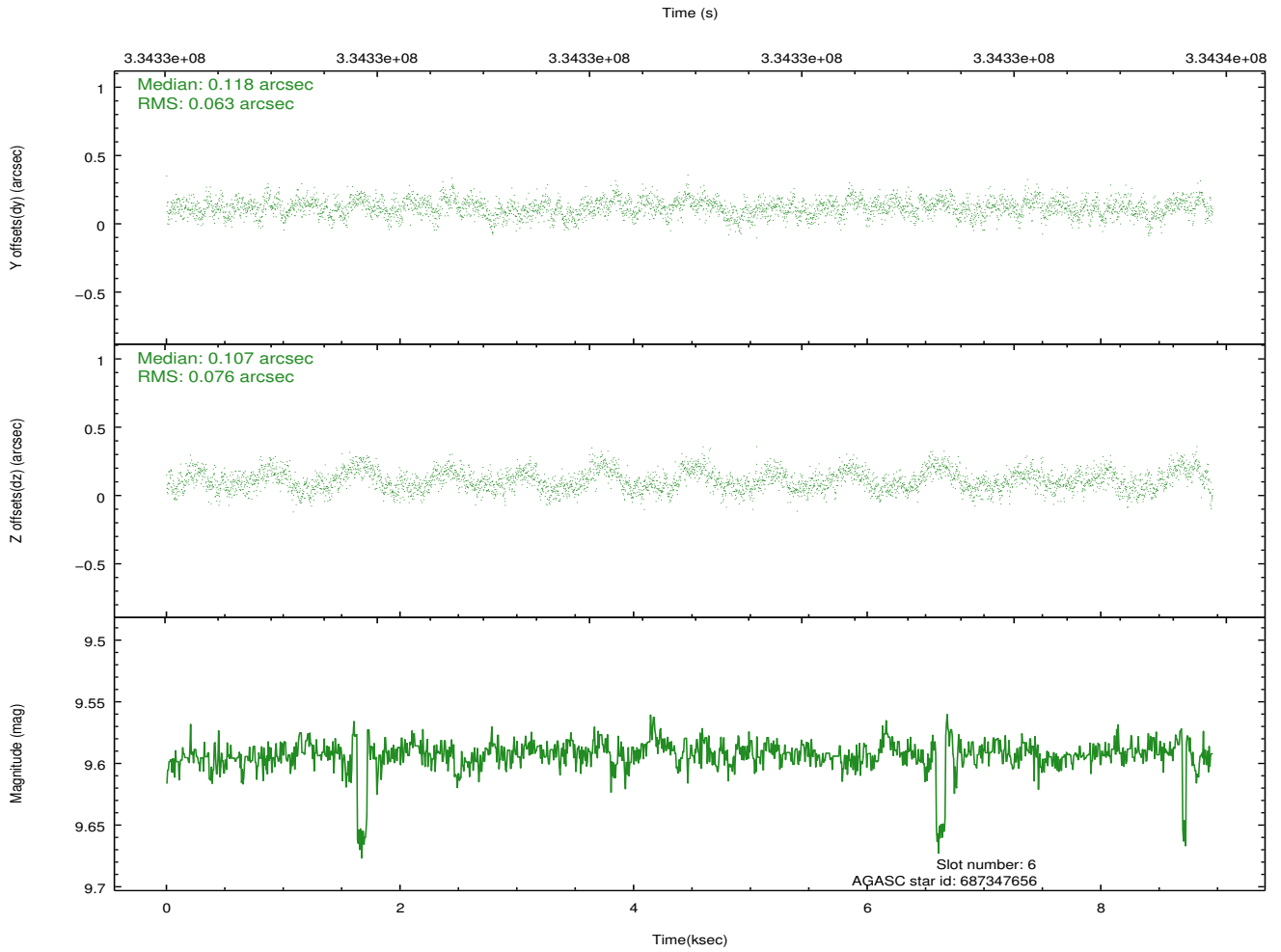
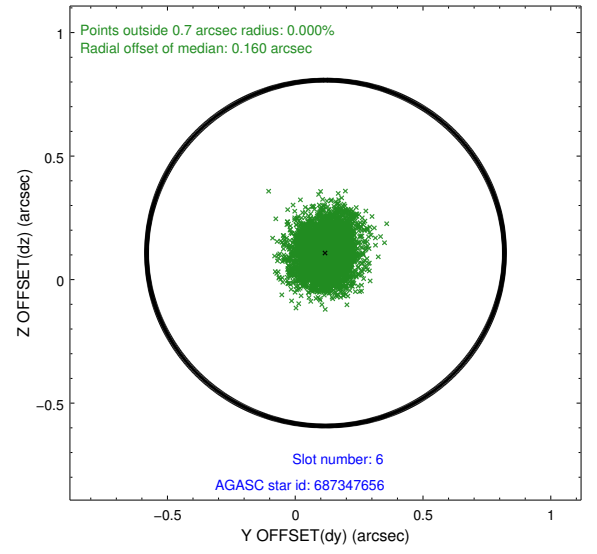
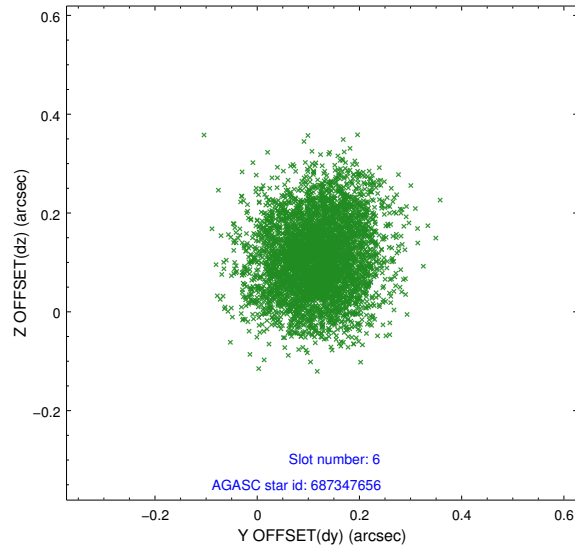
2.4.2 Slot 4



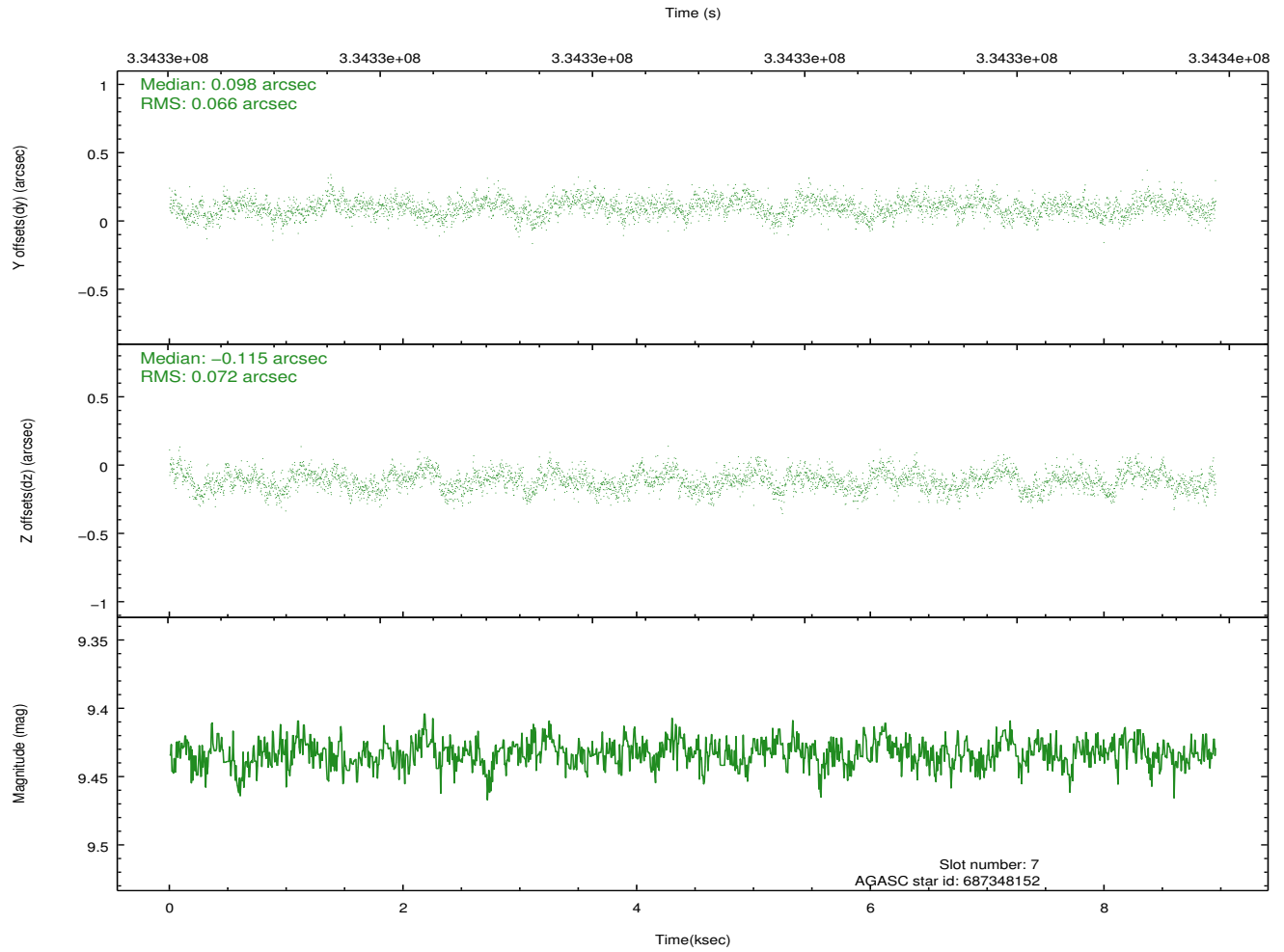
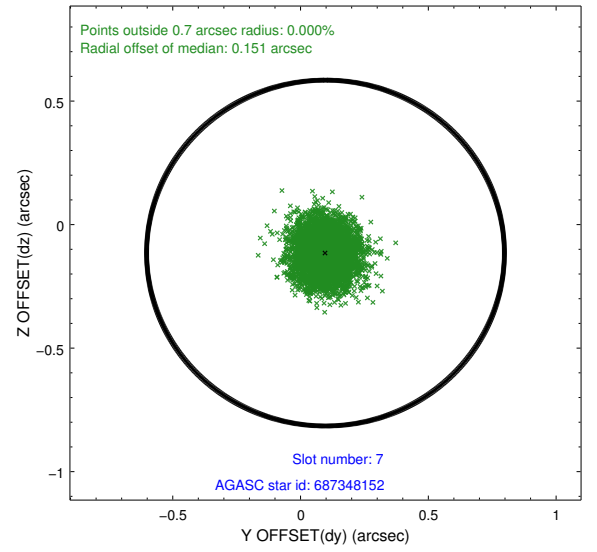
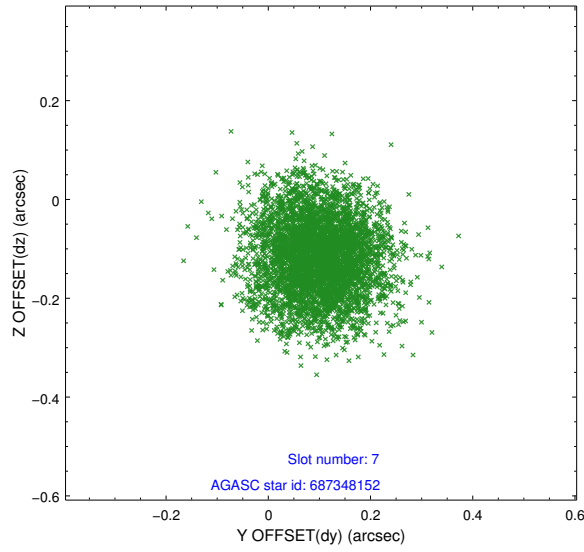
2.4.3 Slot 5



2.4.4 Slot 6

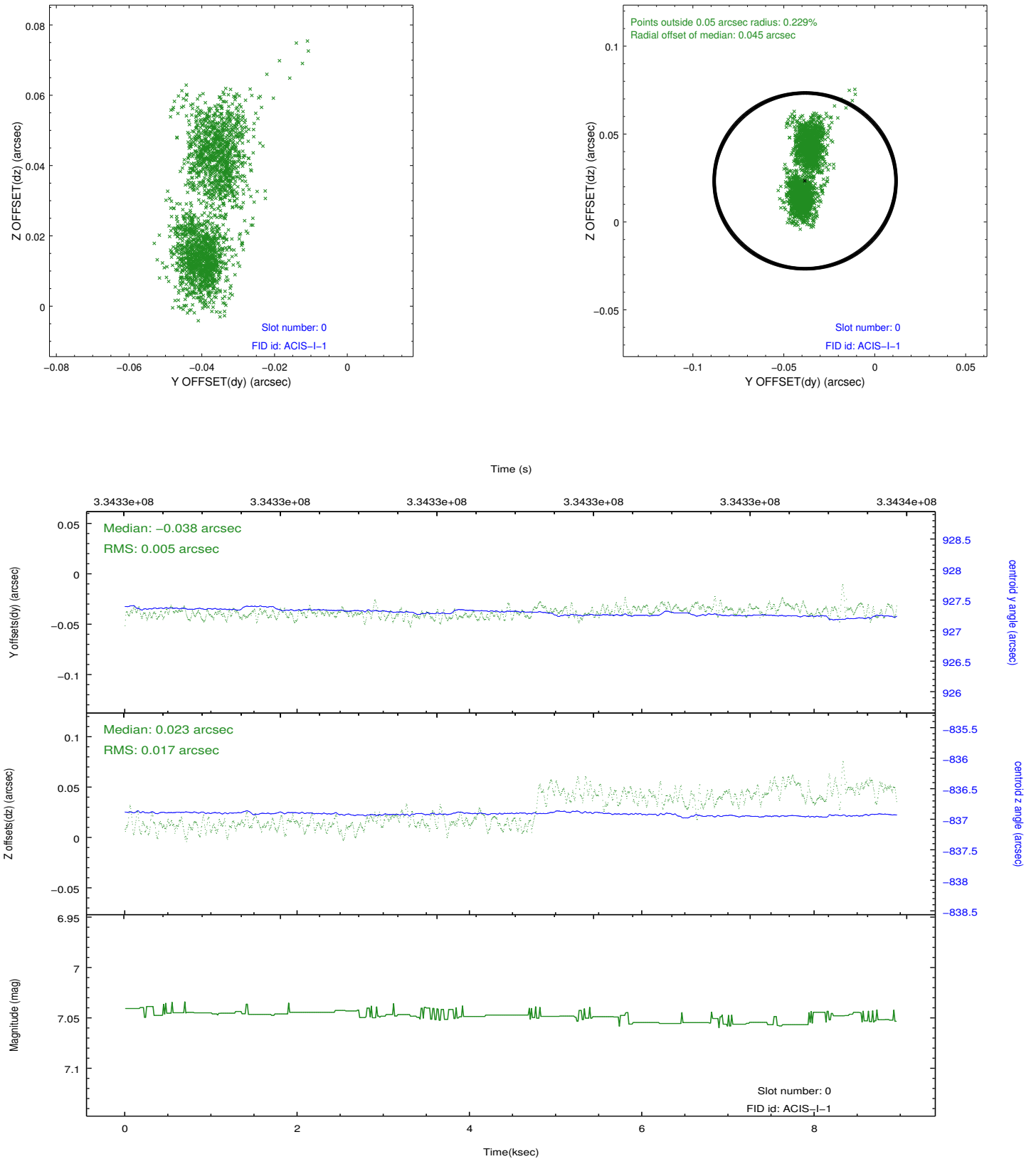


2.4.5 Slot 7

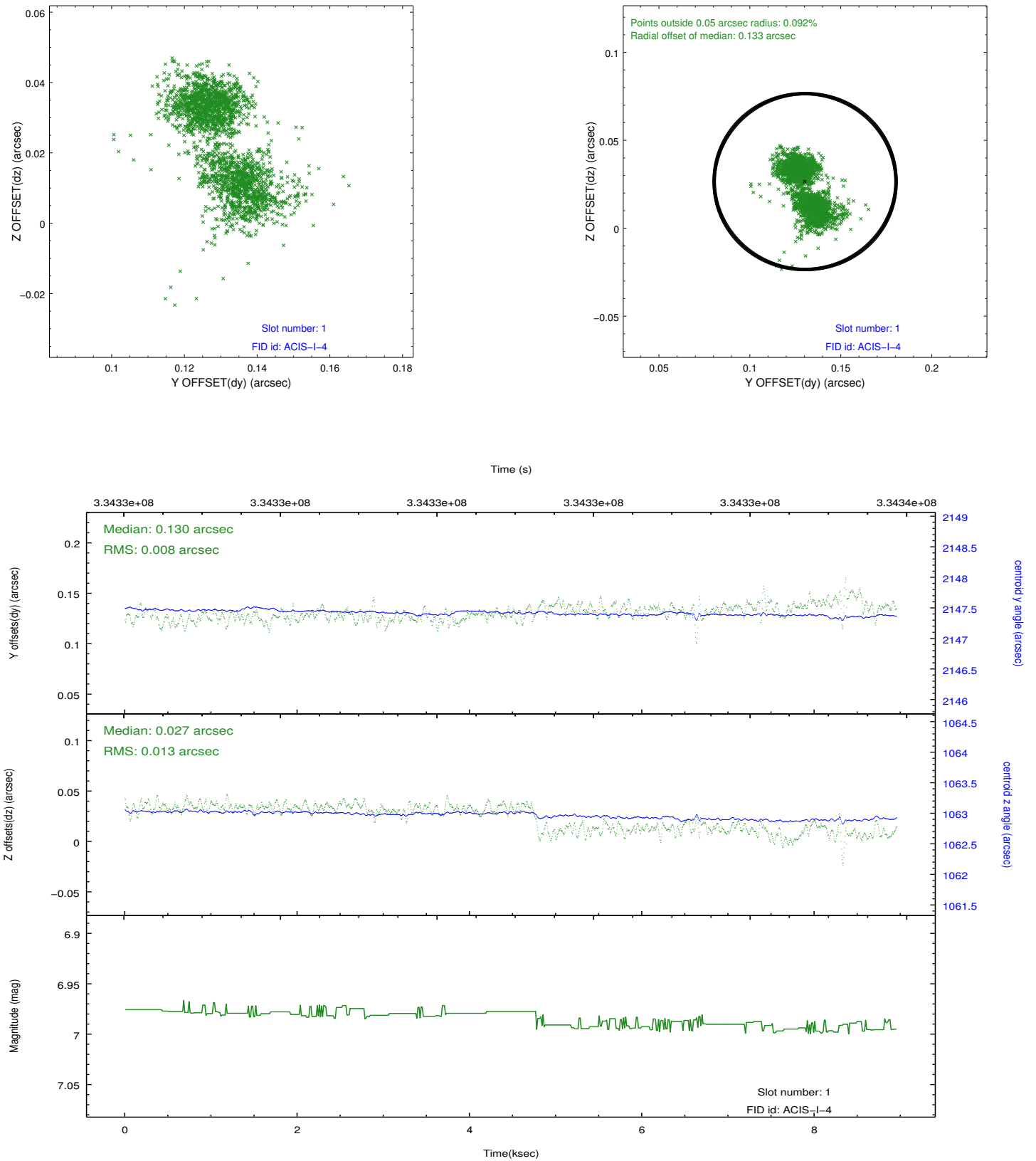


2.5 FID Slots

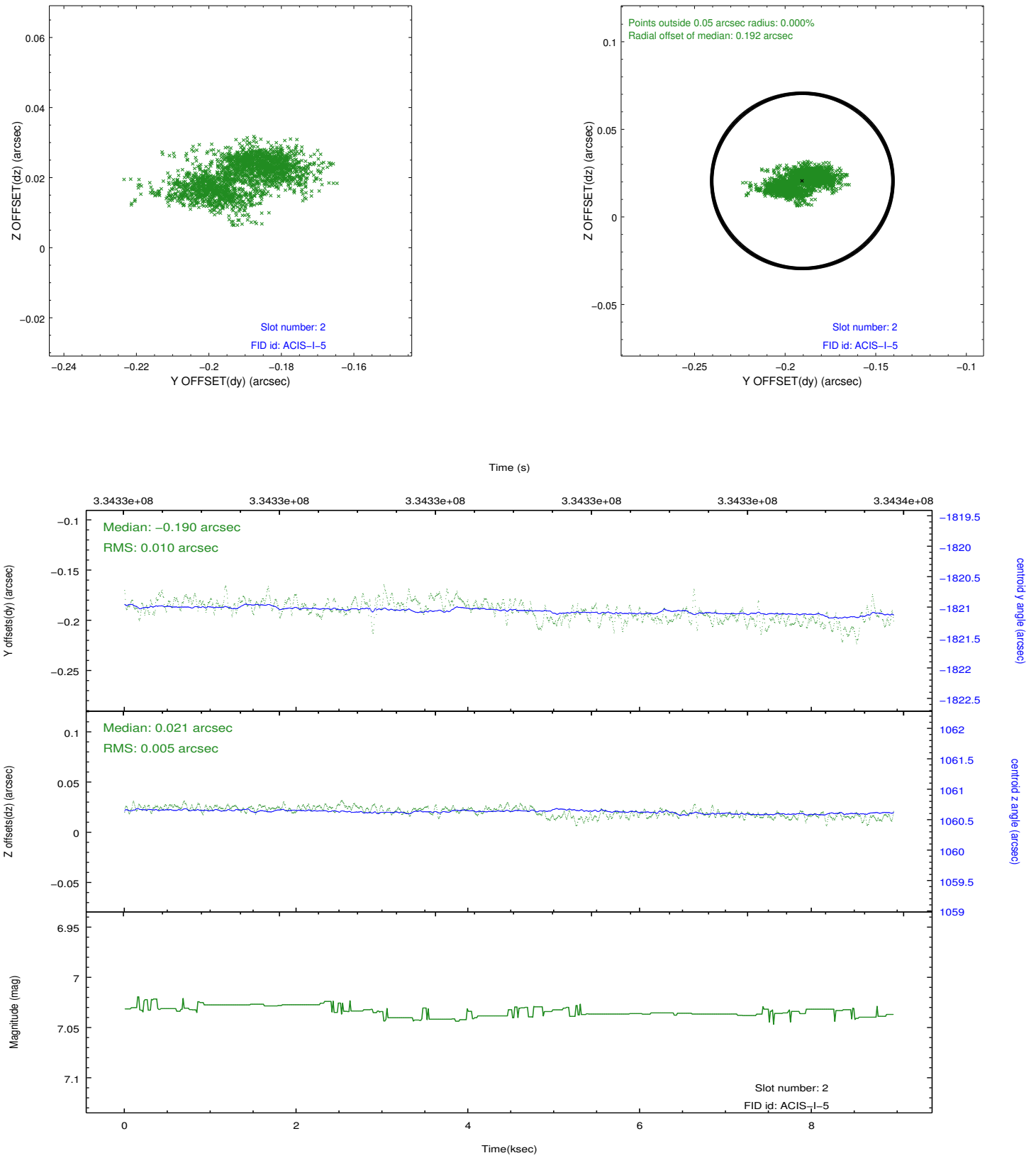
2.5.1 Slot 0



2.5.2 Slot 1



2.5.3 Slot 2



A Summary

A.1 Status

V&V Scientist	Beth Sundheim
V&V Date (YYYY-MM-DD)	2012.05.27
V&V Edition	1
V&V Disposition and Status	OK
V&V Charge Time	8.95590006

A.2 Comments