

V&V Reference Report

L2 ASCDS Version : 8.4.4

Observation 8564 - L2 Version 2
Chandra X-Ray Center

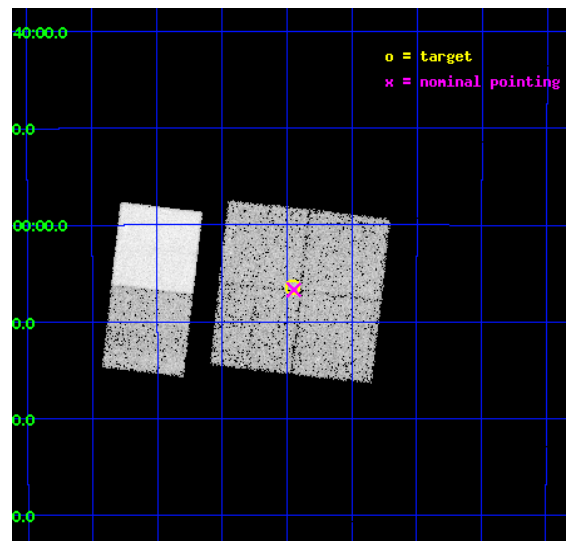
L2 Processing Date : Apr 27 2012

Contents

1	Front	2
2	OBI	3
2.1	OBI	3
2.1.1	Images	3
2.1.2	Bias	3
2.1.3	Parameters	4
2.1.4	Events	4
2.2	Compared Parameters	5
2.3	Aspect	6
2.4	Star Slots	9
2.4.1	Slot 3	9
2.4.2	Slot 4	10
2.4.3	Slot 5	11
2.4.4	Slot 6	12
2.4.5	Slot 7	13
2.5	FID Slots	14
2.5.1	Slot 0	14
2.5.2	Slot 1	15
2.5.3	Slot 2	16
A	Summary	17
A.1	Status	17
A.2	Comments	17

1 Front

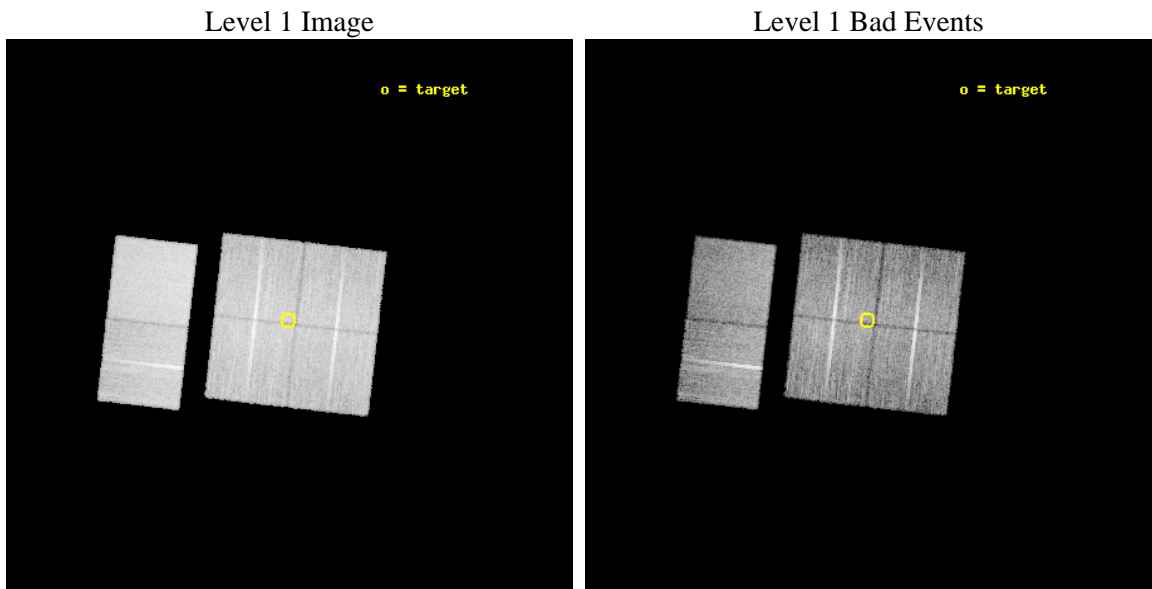
seq_num	400691	Sequence number
obs_id	8564	Observation id
title	RFO with Chandra of the newly discovered Millisecond X-ray Pulsar (MsXP) SWIFT J1756.9-2508	Proposal title
observer	Dr. Tiziana Di Salvo	Principal investigator
object	SWIFT J1756.9-2508	Source name
dtcycle	0	
cycle	P	events from which exps? Prim/Second/Both
ra_targ	269.237917	Observer's specified target RA [deg]
dec_targ	-25.107417	Observer's specified target Dec [deg]
ra_nom	269.23657180444	Nominal RA [deg]
dec_nom	-25.11193499617	Nominal Dec [deg]
roll_nom	276.53973033209	Nominal Roll [deg]
revision	2	Processing version of data
ontime	11151.999958515	Sum of GTIs [s]
livetime	11010.786620112	Livetime [s]
ontime0	11151.999958515	Sum of GTIs [s]
ontime1	11151.999958515	Sum of GTIs [s]
ontime2	11151.999958515	Sum of GTIs [s]
ontime3	11151.999958515	Sum of GTIs [s]
ontime6	11148.759067833	Sum of GTIs [s]
ontime7	11151.999958515	Sum of GTIs [s]
l2events	121161	Number of level 2 events



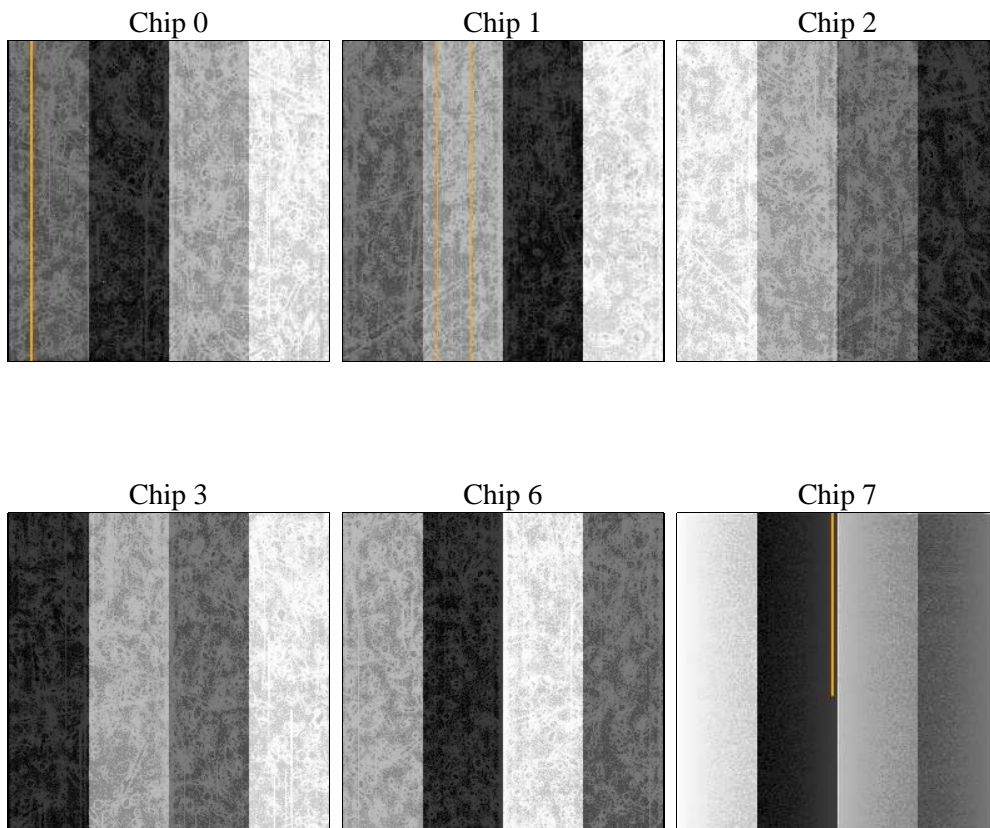
2 OBI

2.1 OBI

2.1.1 Images



2.1.2 Bias



2.1.3 Parameters

obi_num	0	Obi number	sched_exp_time	11000.000000	[s] Scheduled observation exposure time
ascdsver	8.4.4	Processing system revision	ontime	11151.999958515	Sum of GTIs [s]
caldsver	4.4.9	 	ontime0	11151.999958515	Sum of GTIs [s]
date	2012-04-27T13:31:33	Date and time of file creation	ontime1	11151.999958515	Sum of GTIs [s]
revision	2	Processing version of data	ontime2	11151.999958515	Sum of GTIs [s]
			ontime3	11151.999958515	Sum of GTIs [s]
			ontime6	11148.759067833	Sum of GTIs [s]
			ontime7	11151.999958515	Sum of GTIs [s]
			l1events	684268	Number of level 1 events

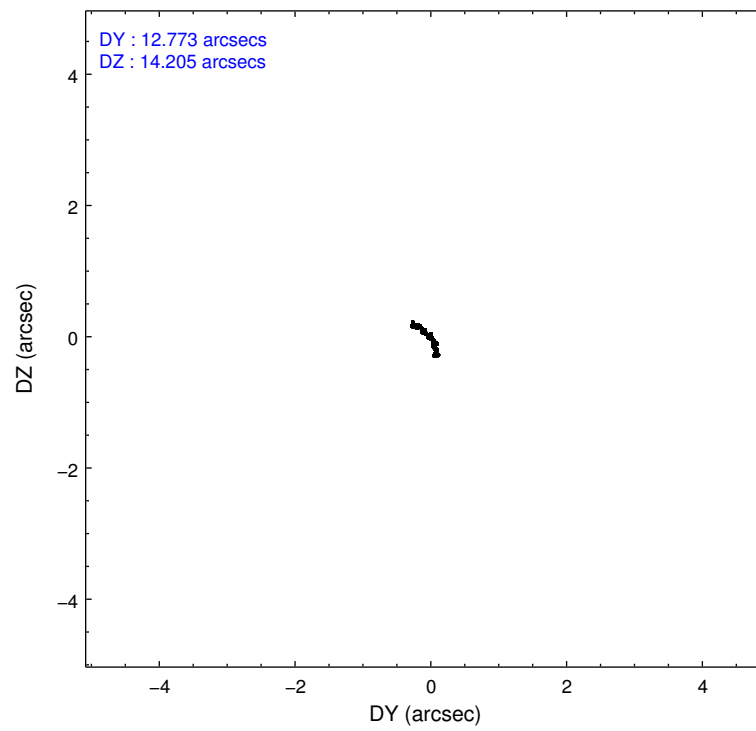
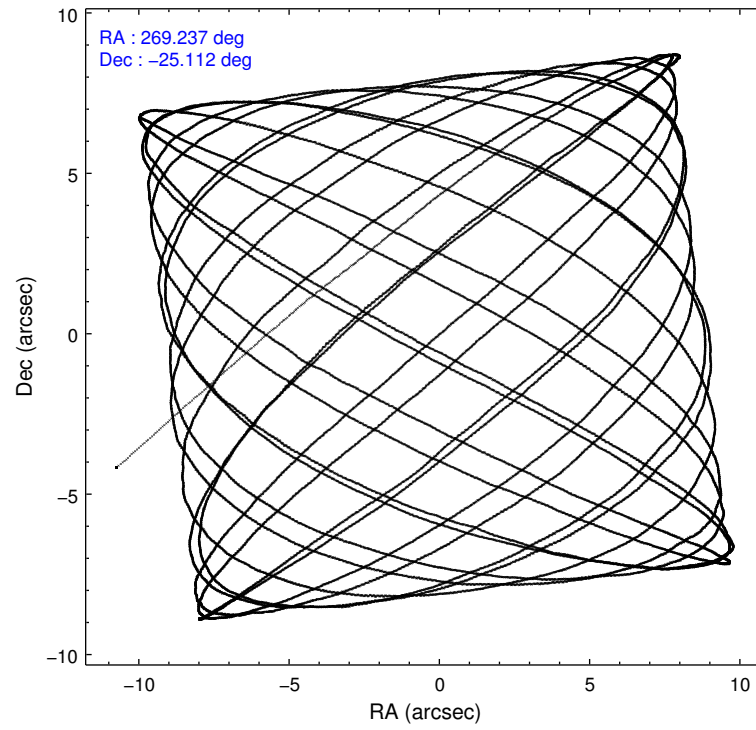
2.1.4 Events

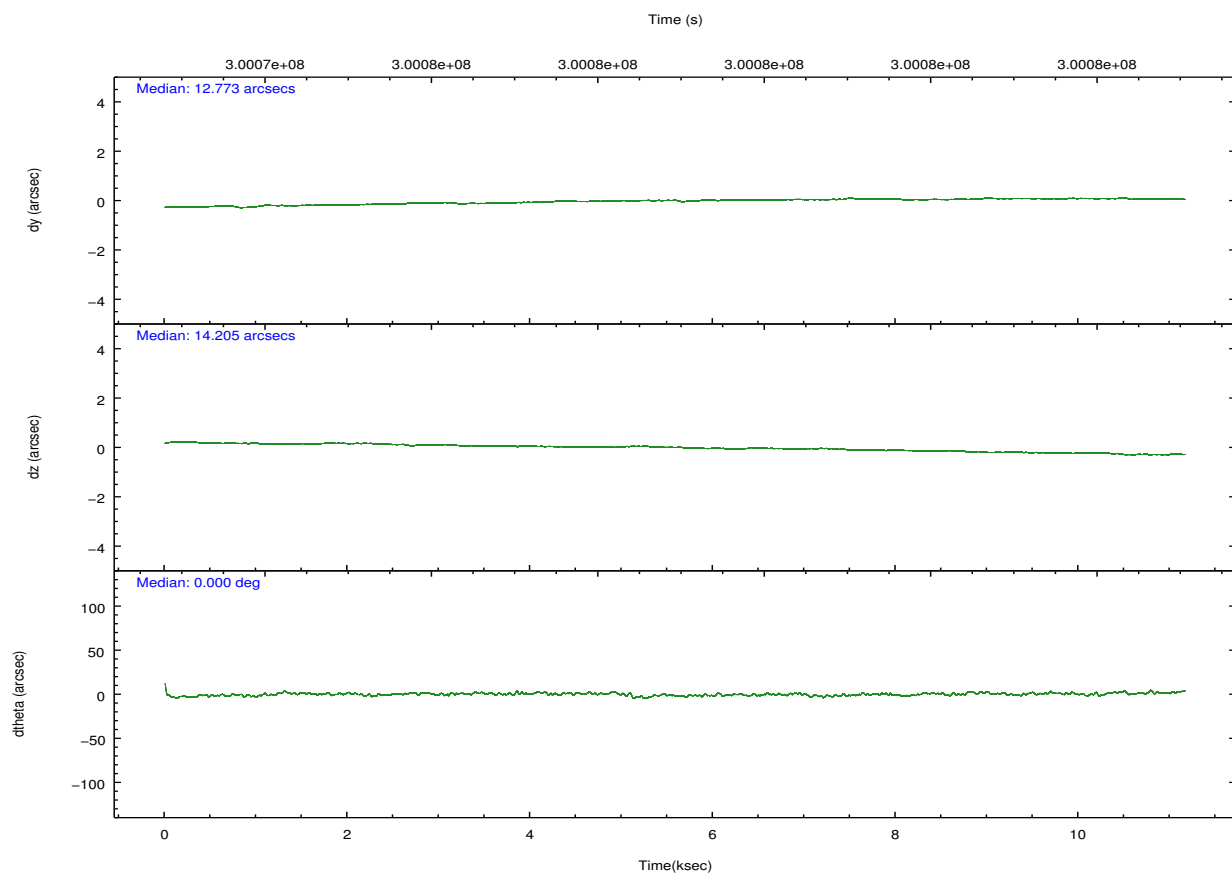
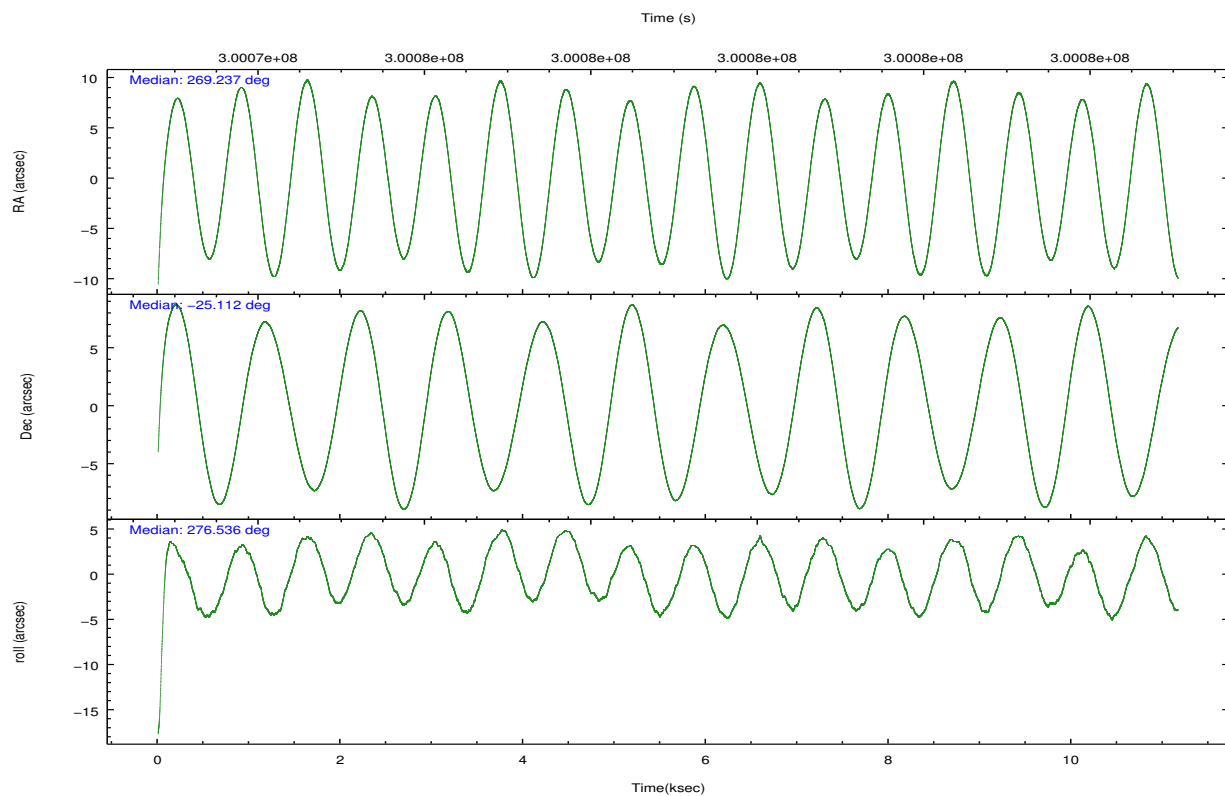
	ccd 0	ccd 1	ccd 2	ccd 3	ccd 6	ccd 7		ccd 0	ccd 1	ccd 2	ccd 3	ccd 6	ccd 7
level 1 events	100157	101422	111142	106677	114039	150831	grade 0 events	6284	5867	6237	6320	5731	5415
rejected events	86326	86999	97626	93168	100110	88249		6%	5%	5%	5%	5%	3%
rejected %	86%	85%	87%	87%	87%	58%	grade 1 events	70	57	75	88	80	171
								0%	0%	0%	0%	0%	0%
							grade 2 events	2975	3308	2850	2607	3088	12993
								2%	3%	2%	2%	2%	8%
							grade 3 events	1302	1366	1210	1301	1324	5360
								1%	1%	1%	1%	1%	3%
							grade 4 events	1210	1325	1248	1273	1213	5352
								1%	1%	1%	1%	1%	3%
							grade 5 events	4310	4742	4088	4918	5397	14113
								4%	4%	3%	4%	4%	9%
							grade 6 events	2283	2760	2181	2215	2762	34353
								2%	2%	1%	2%	2%	22%
							grade 7 events	81723	81997	93253	87955	94444	73074
								81%	80%	83%	82%	82%	48%

2.2 Compared Parameters

Parameter	Planned	Actual	Parameter	Planned	Actual
Instrument	ACIS	ACIS	Obspar format version number	7	7
Detector	ACIS-012367	ACIS-012367	Obspar file type	PREDICTED	ACTUAL
Grating	NONE	NONE	Obspar update status	NONE	UPDATED
Data mode	FAINT	FAINT	CCD I0 on	Y	Y
Observation mode	POINTING	POINTING	CCD I1 on	Y	Y
[deg] Pointing RA	269.218372	269.2365718044362	CCD I2 on	Y	Y
[deg] Pointing Dec	-25.089928	-25.11193499617013	CCD I3 on	Y	Y
[deg] Pointing Roll	276.323341	276.5397303320889	CCD S0 on	N	N
[mm] SIM focus pos	-0.782348	-0.7809083437167272	CCD S1 on	N	N
[mm] SIM defocus	0	0.001439871863259334	CCD S2 on	O1	Y
[mm] SIM translation stage pos	-233.592463	-233.5874344608287	CCD S3 on	O2	Y
[mm] SIM translation stage offset	0	-0.005018542100998502	CCD S4 on	N	N
[s] Observation start time (MET)	300073516.184000	300072375.87074	CCD S5 on	N	N
Observation start date	2007-07-06T01:44:11	2007-07-06T01:26:15	Number of optional ACIS chips dropped	0	0
[s] Observation end time (MET)	300084516.184000	300084844.99634	On-chip summing requested	N	N
Observation end date	2007-07-06T04:47:31	2007-07-06T04:54:04	Subarray requested	NONE	NONE
Read mode	TIMED	TIMED	Alternating exposures requested	N	N
			[s] Primary exposure time	0.000000	3.2

2.3 Aspect



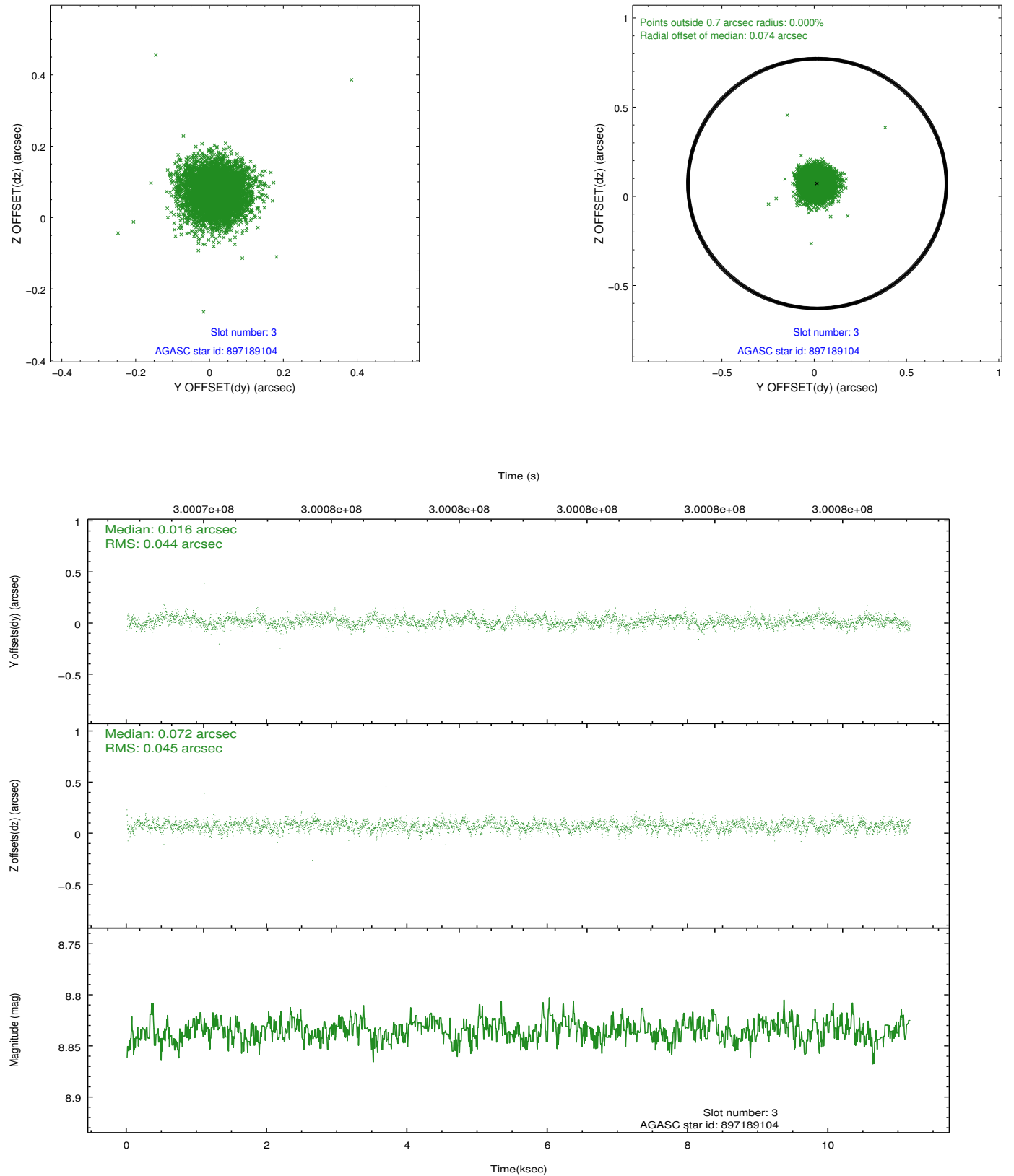


Slot Statistics

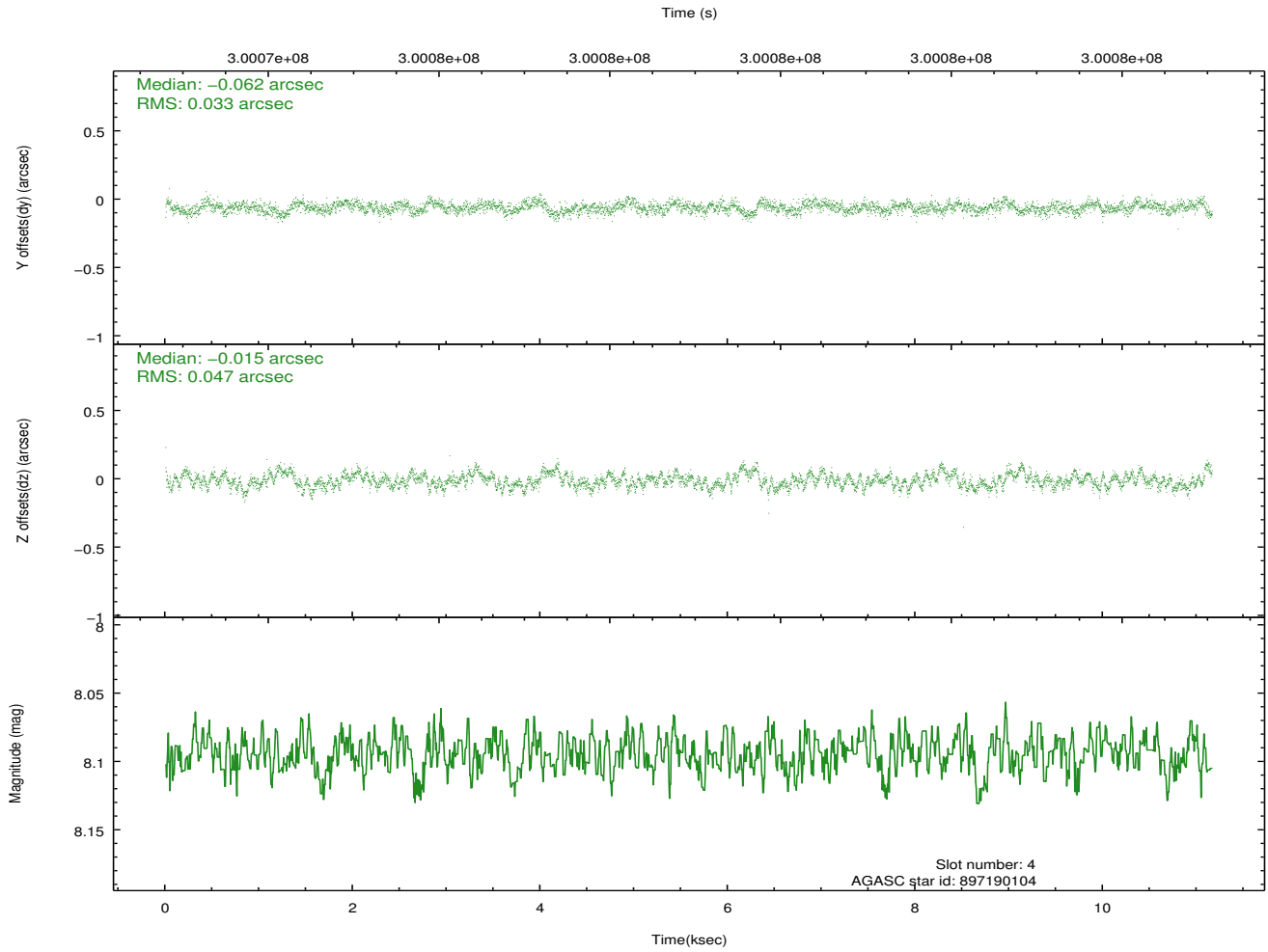
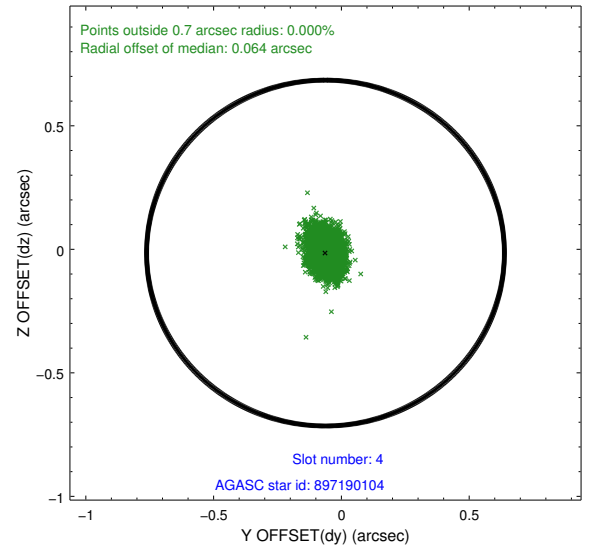
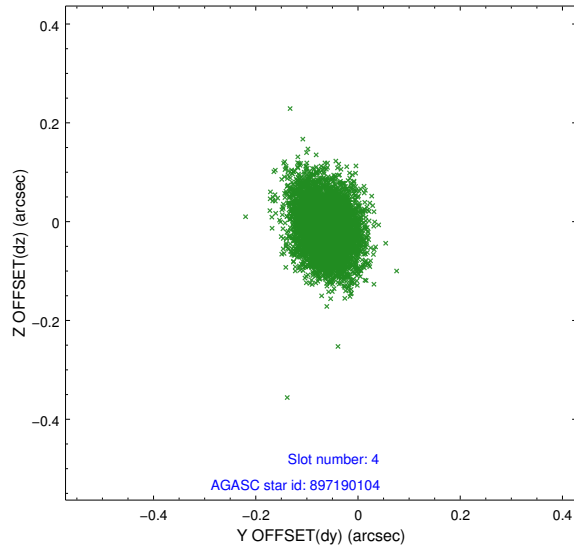
slot	status	id	mag	n_pts	med_dy	med_dz	dr1	dr2	ra	dec	mean_y	mean_z
0	FID	ACIS-I-1	7.22	2723	-0.057	0.081	0.013	0.023	0.000000	0.000000	926.70	-837.71
1	FID	ACIS-I-2	7.14	2723	-0.148	-0.095	0.015	0.022	0.000000	0.000000	-767.23	-844.49
2	FID	ACIS-I-4	7.16	2721	0.106	0.082	0.013	0.020	0.000000	0.000000	2146.61	1061.81
3	GUIDE	897189104	8.83	5445	0.016	0.072	0.067	0.107	268.741216	-24.590164	-1956.99	-1354.70
4	GUIDE	897190104	8.09	5445	-0.062	-0.015	0.061	0.102	268.897616	-25.377340	914.83	-1151.22
5	GUIDE	897190880	8.09	5442	-0.088	0.107	0.060	0.095	269.584058	-25.142408	321.09	1163.46
6	GUIDE	897193376	6.58	5445	-0.006	-0.102	0.062	0.095	268.725176	-24.887096	-899.64	-1520.65
7	GUIDE	897193832	9.17	5436	0.140	-0.059	0.093	0.149	269.291393	-25.000491	-293.31	271.93

2.4 Star Slots

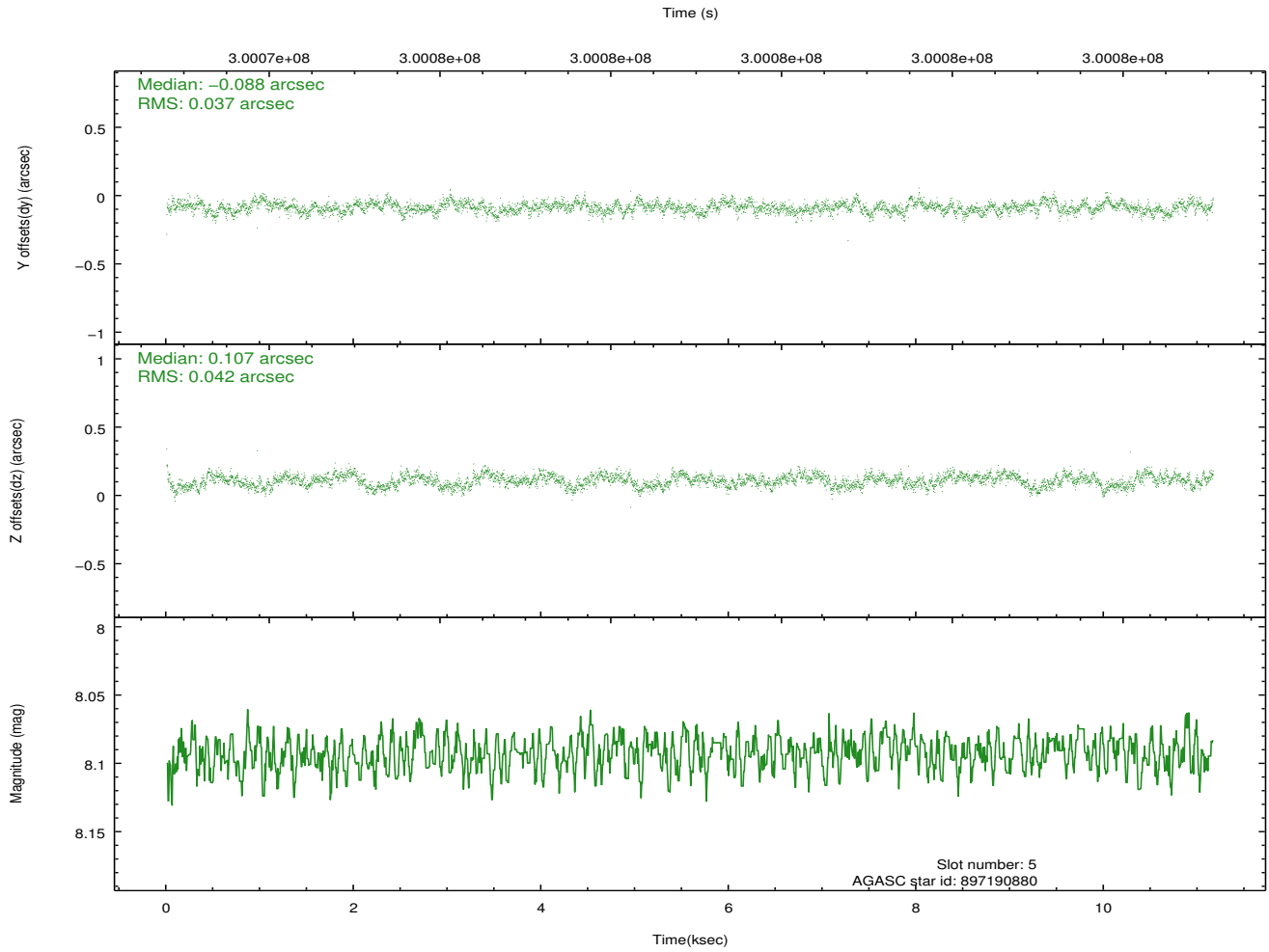
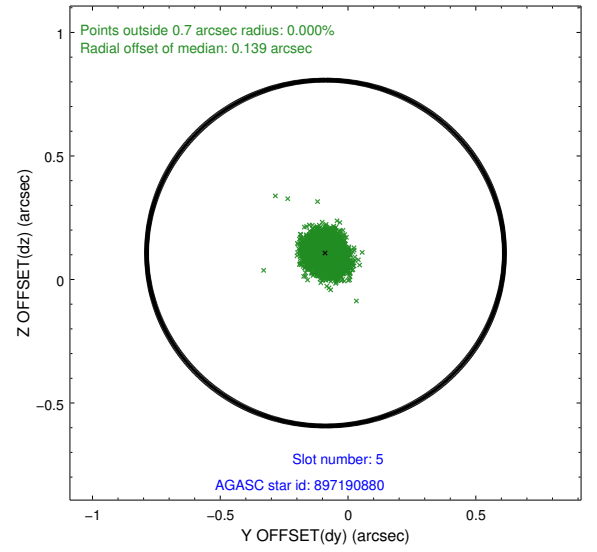
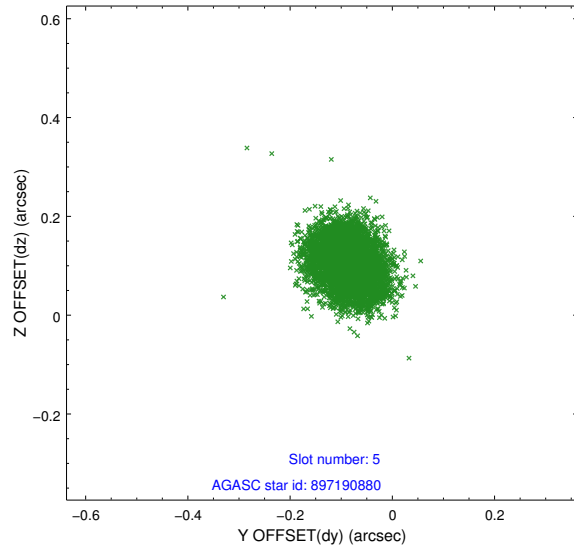
2.4.1 Slot 3



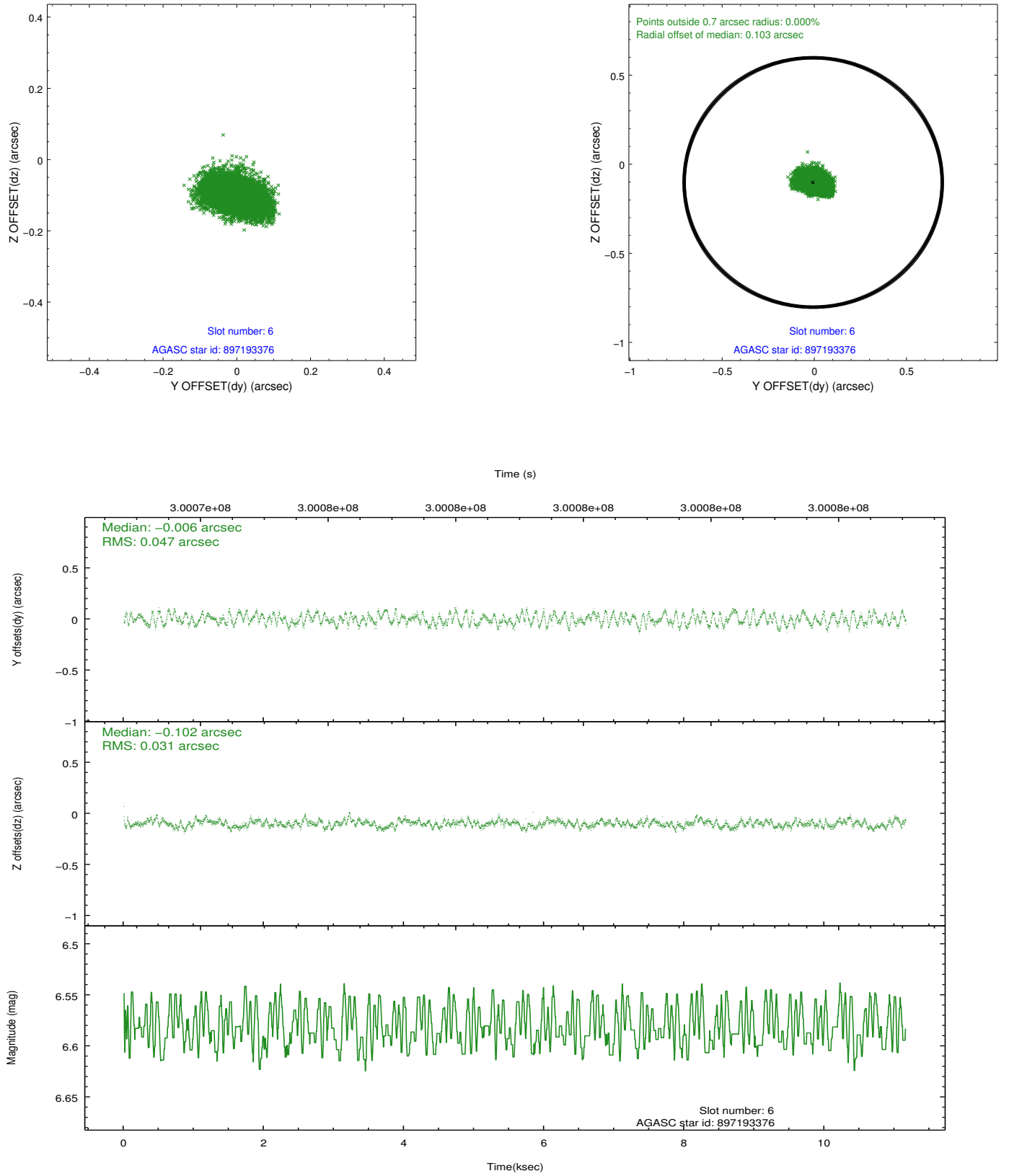
2.4.2 Slot 4



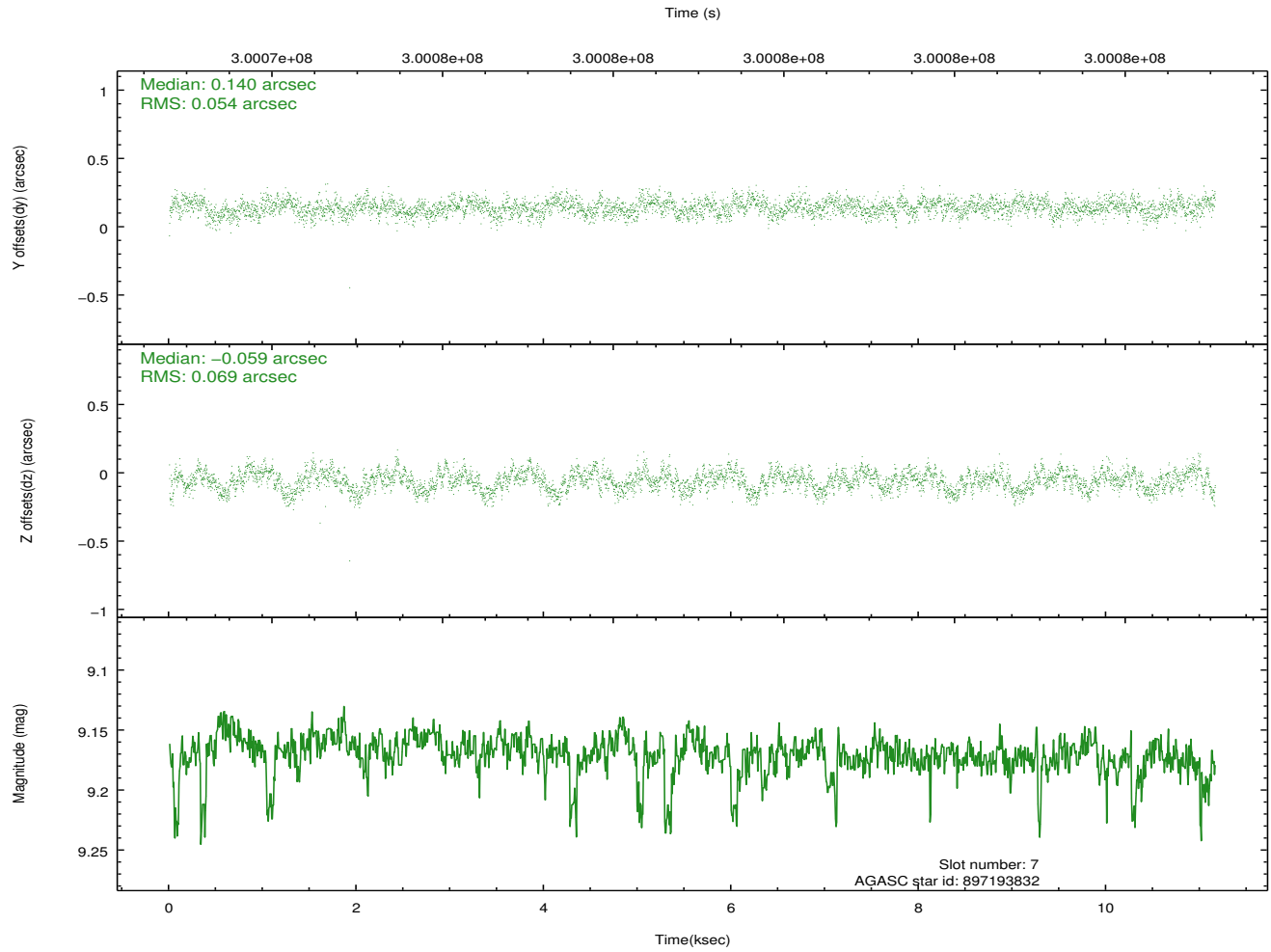
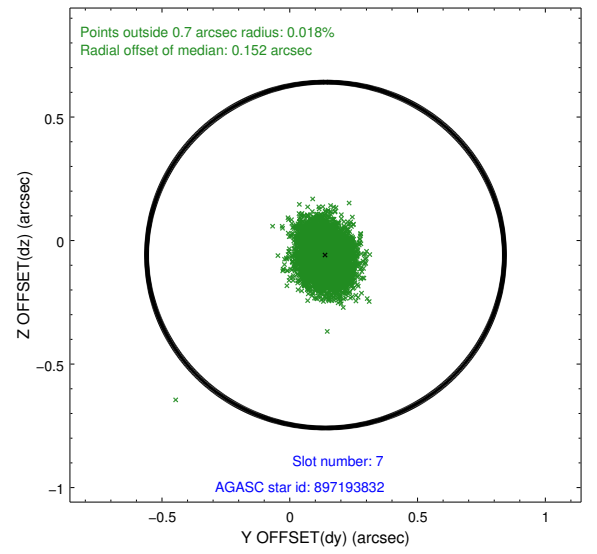
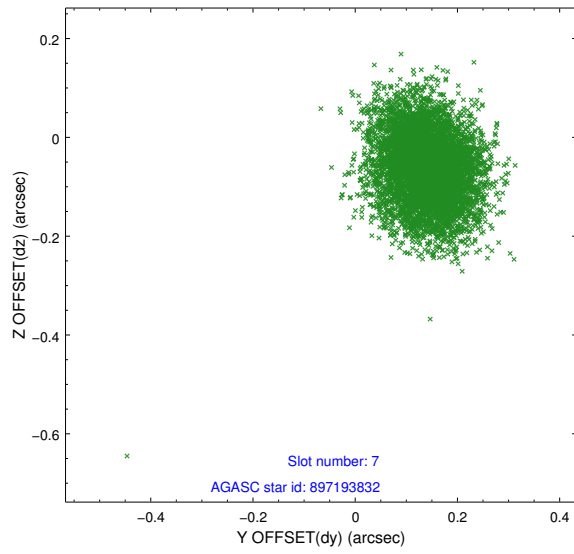
2.4.3 Slot 5



2.4.4 Slot 6

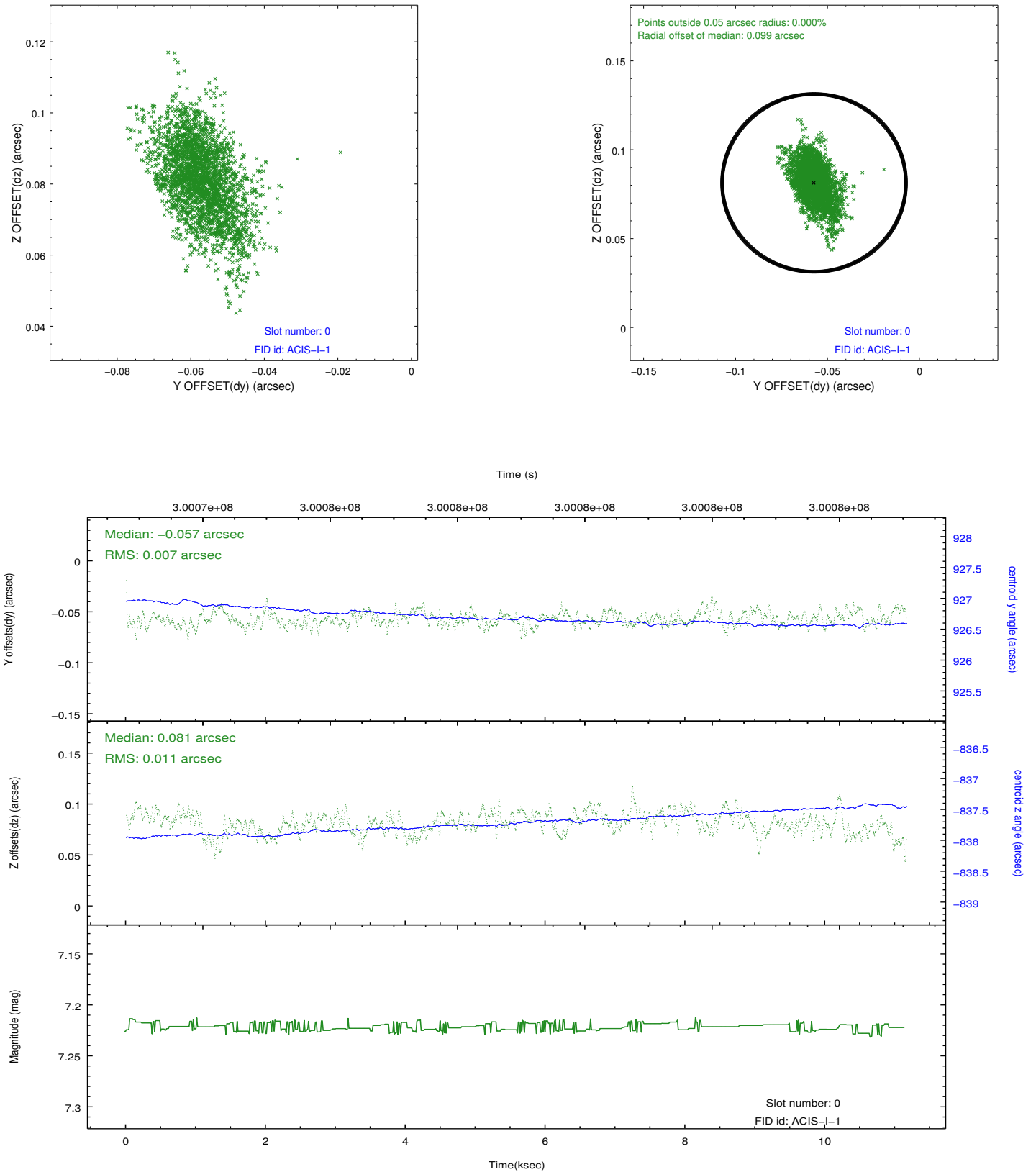


2.4.5 Slot 7

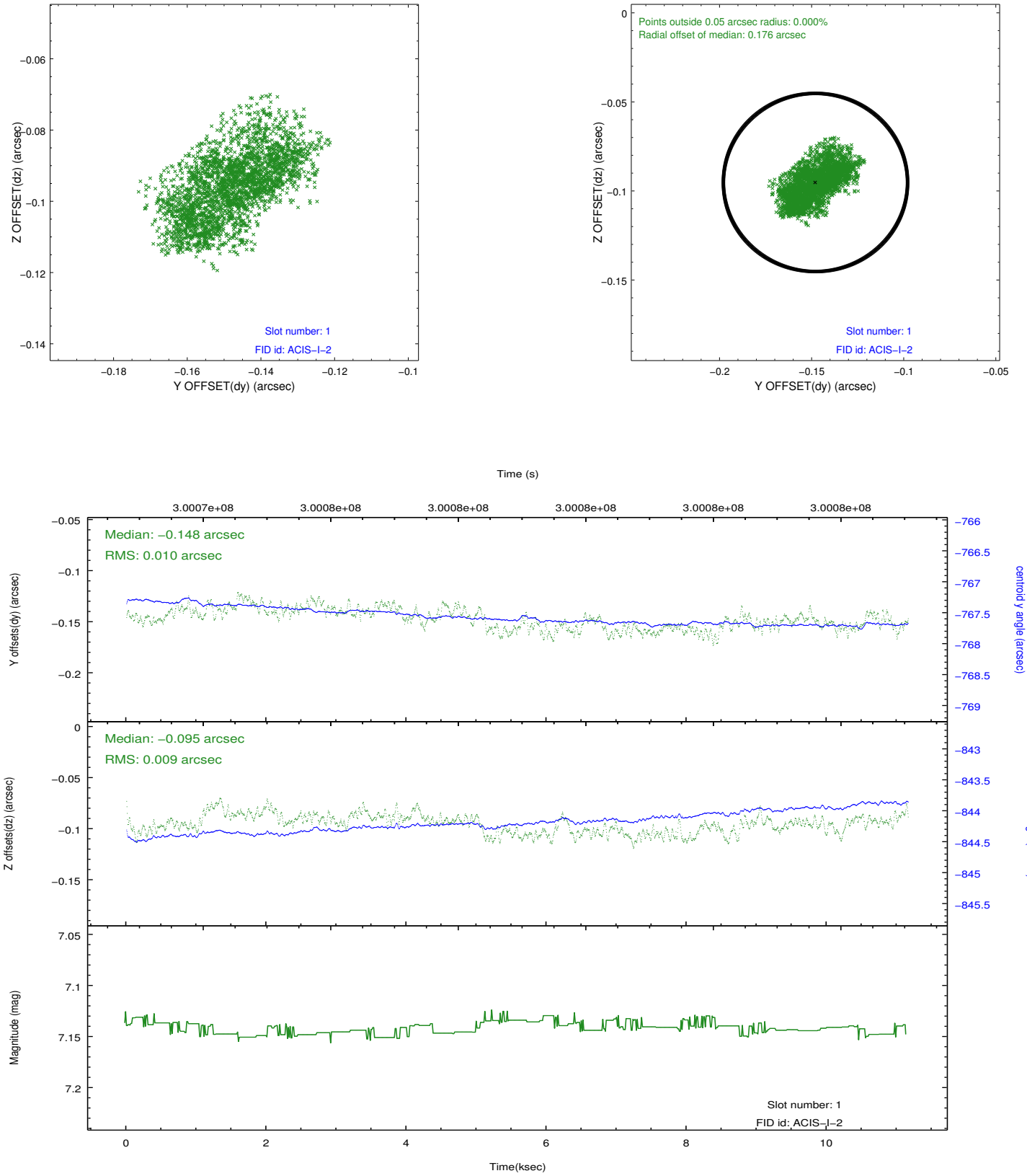


2.5 FID Slots

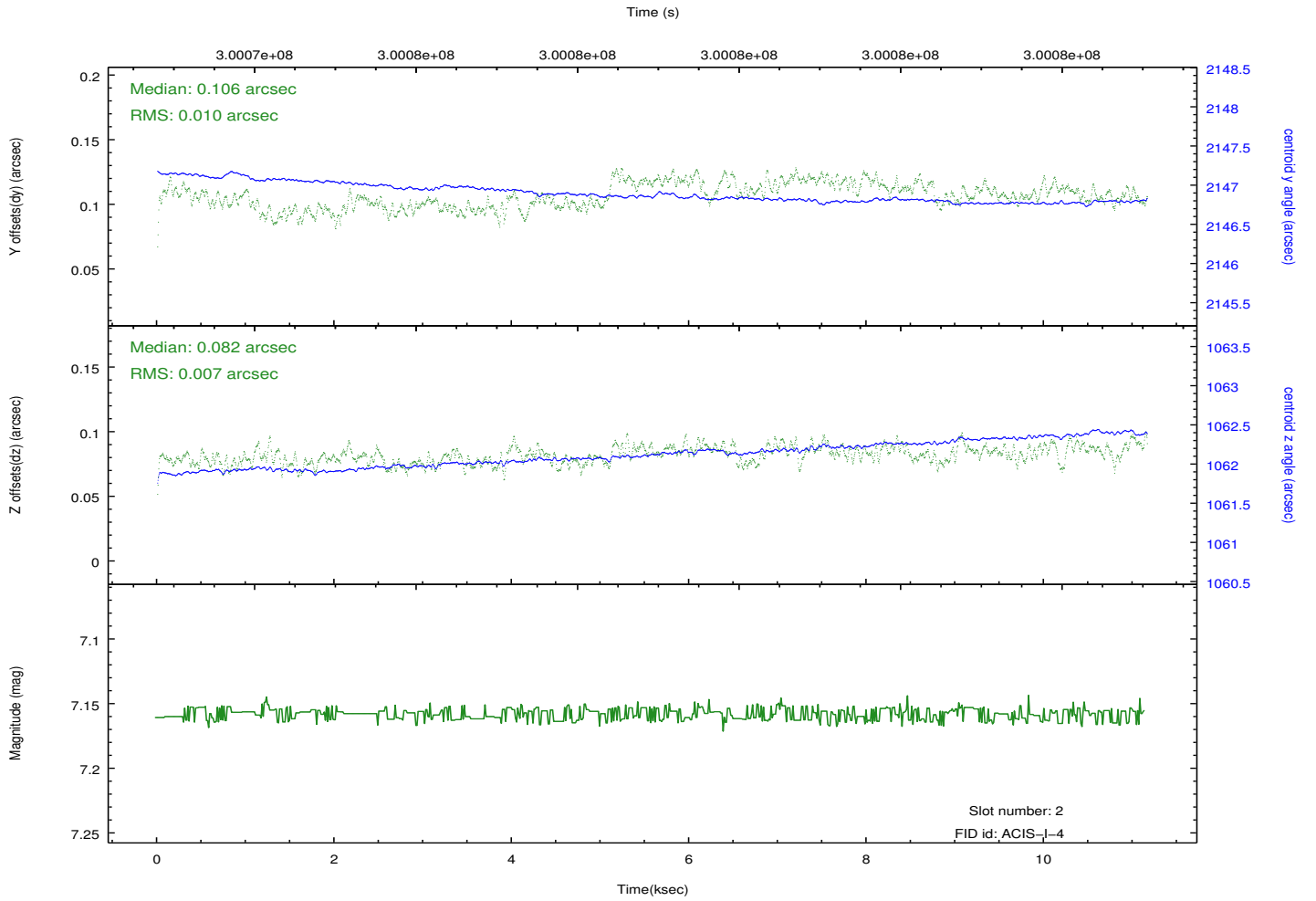
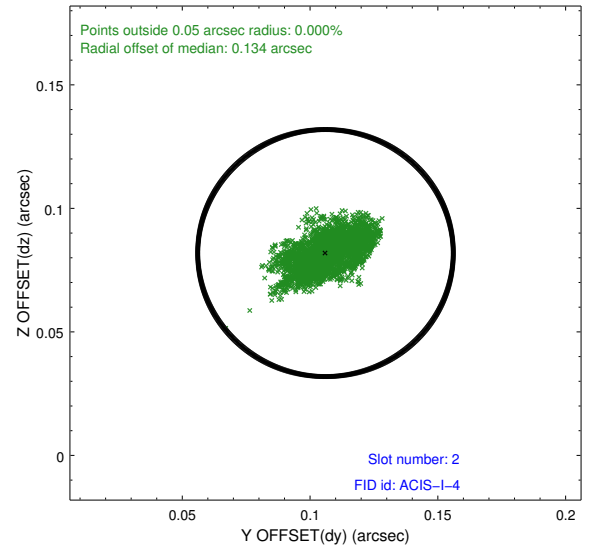
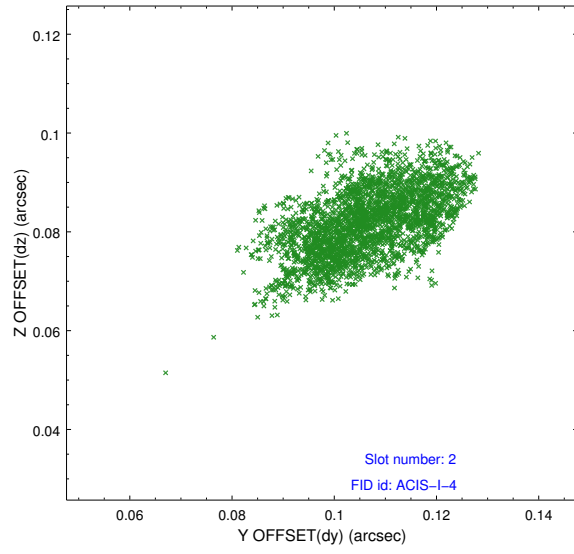
2.5.1 Slot 0



2.5.2 Slot 1



2.5.3 Slot 2



A Summary

A.1 Status

V&V Scientist	Jen Lauer
V&V Date (YYYY-MM-DD)	2012.04.27
V&V Edition	1
V&V Disposition and Status	OK
V&V Charge Time	11.1519999

A.2 Comments