

# V&V Reference Report

## L2 ASCDS Version : 7.6.10

Observation 854 - L2 Version 001  
Chandra X-Ray Center

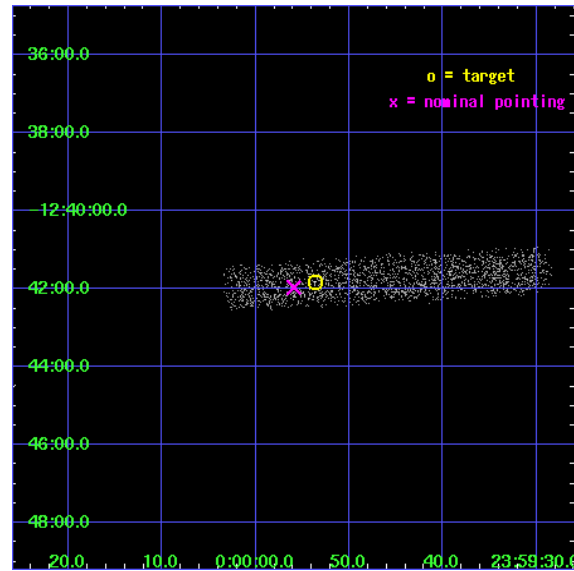
L2 Processing Date : Jun 8 2007

## Contents

<b>1</b>	<b>Front</b>	<b>2</b>
<b>2</b>	<b>OBI</b>	<b>3</b>
2.1	OBI . . . . .	3
2.1.1	Images . . . . .	3
2.1.2	Bias . . . . .	3
2.1.3	Parameters . . . . .	4
2.1.4	Events . . . . .	4
2.2	Compared Parameters . . . . .	5
2.3	Aspect . . . . .	6
2.4	Star Slots . . . . .	9
2.4.1	Slot 3 . . . . .	9
2.4.2	Slot 4 . . . . .	10
2.4.3	Slot 5 . . . . .	11
2.4.4	Slot 6 . . . . .	12
2.4.5	Slot 7 . . . . .	13
2.5	FID Slots . . . . .	14
2.5.1	Slot 0 . . . . .	14
2.5.2	Slot 1 . . . . .	15
2.5.3	Slot 2 . . . . .	16
<b>3</b>	<b>Point Sources</b>	<b>17</b>
<b>A</b>	<b>Summary</b>	<b>18</b>
A.1	Status . . . . .	18
A.2	Comments . . . . .	18

# 1 Front

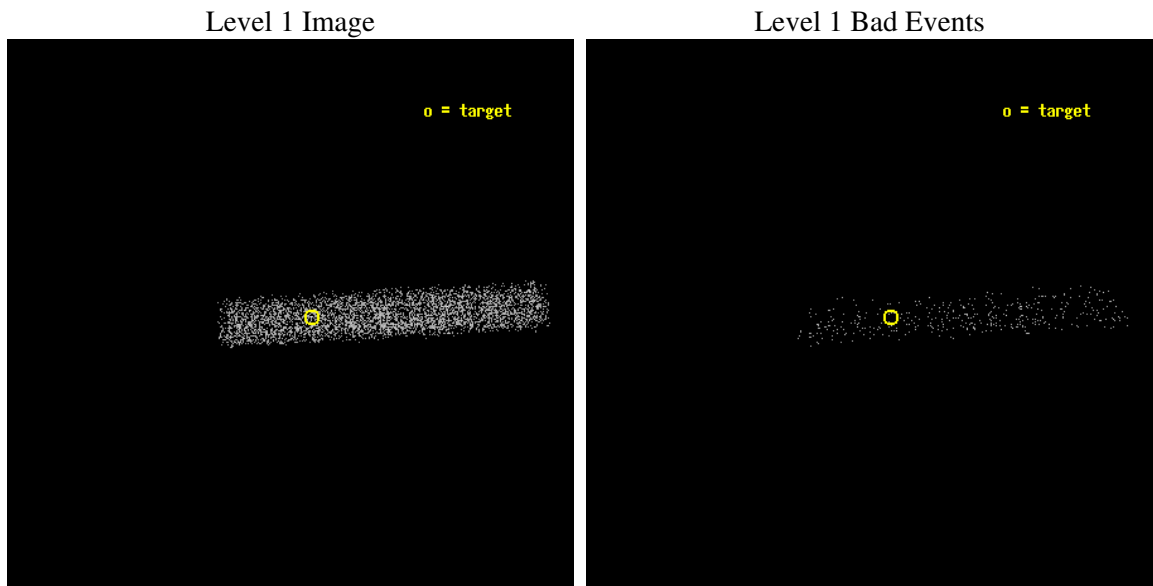
seq_num	700159
obs_id	854
title	X-RAYS FROM RADIO-LOUD BROAD ABSORPTION LINE QSOS
observer	Professor Michael Brotherton
object	BAL 2359-1241
dtcycle	0
cycle	P
ra_targ	359.973333
dec_targ	-12.696944
ra_nom	359.98307836346
dec_nom	-12.699399346416
roll_nom	356.51238200604
revision	4
ontime	5294.8000788987
livetime	4802.1041890973
ontime7	5294.8000788987
l2events	2254



## 2 OBI

### 2.1 OBI

#### 2.1.1 Images



#### 2.1.2 Bias

Chip 7



### 2.1.3 Parameters

obi_num	0
ascdsver	7.6.10
caldbver	3.4.0
date	2007-06-08T11:09:11
revision	4

sched_exp_time	5100.000000
ontime	5294.8000788987
ontime7	5294.8000788987
l1events	6117

### 2.1.4 Events

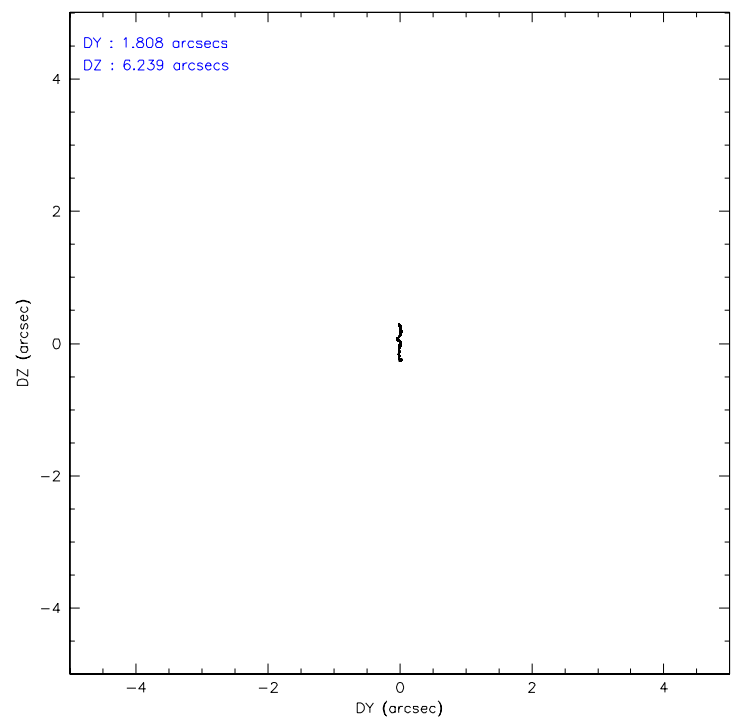
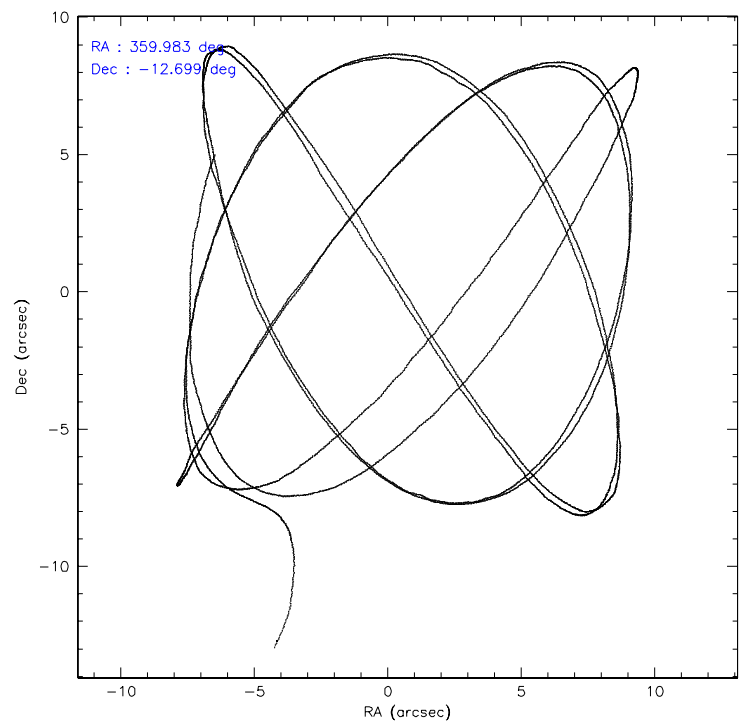
	<b>ccd 7</b>
level 1 events	6117
rejected events	3746
rejected %	61%

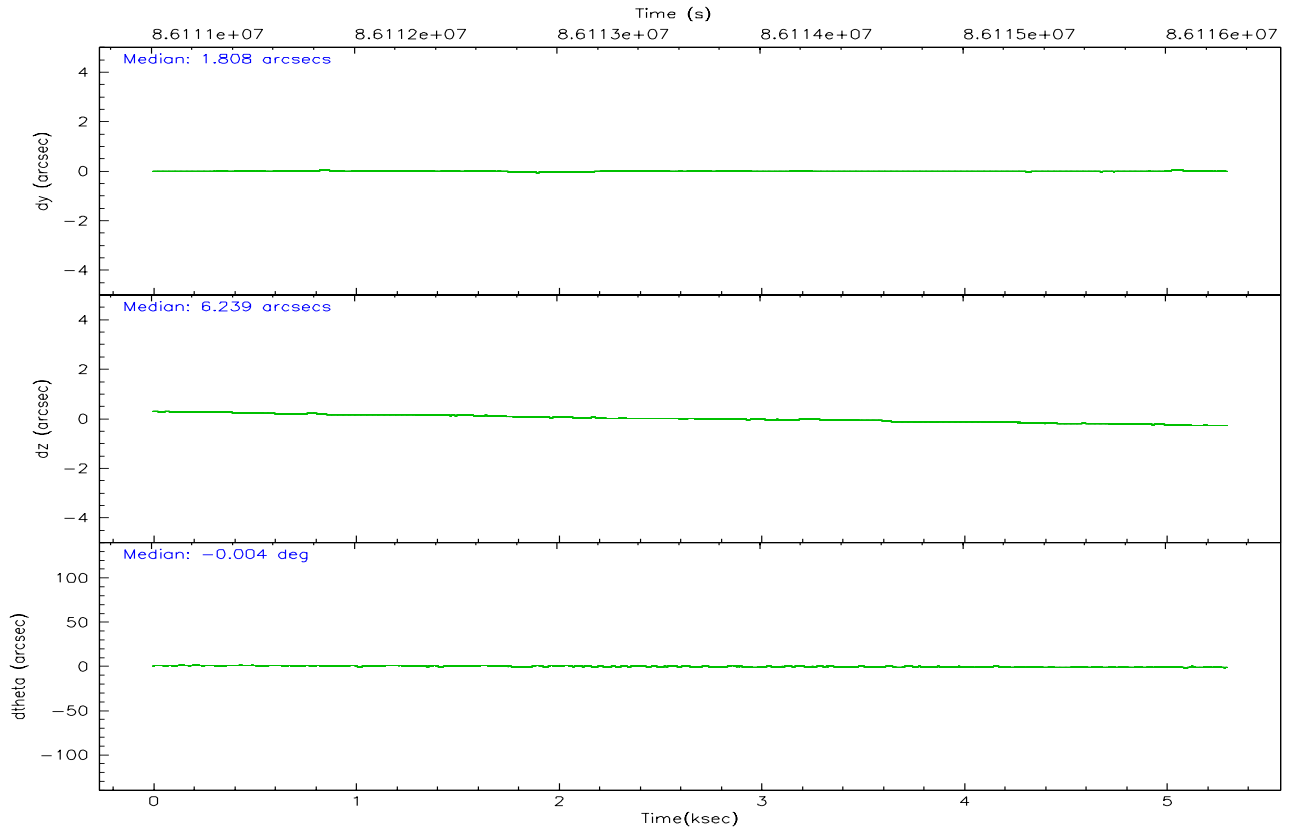
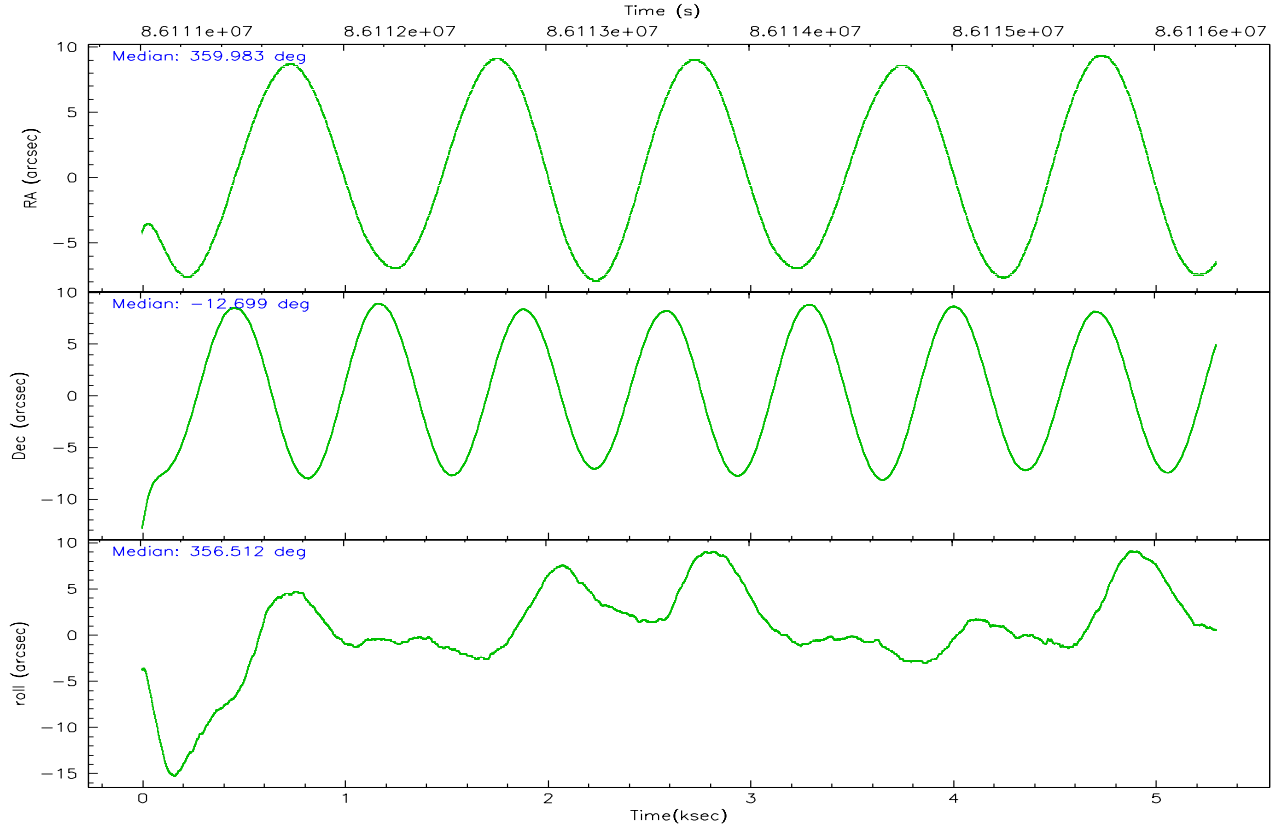
	<b>ccd 7</b>
grade 0 events	331
	5%
grade 1 events	6
	0%
grade 2 events	551
	9%
grade 3 events	384
	6%
grade 4 events	359
	5%
grade 5 events	535
	8%
grade 6 events	1274
	20%
grade 7 events	2677
	43%

## 2.2 Compared Parameters

Parameter	Planned	Actual	Parameter	Planned	Actual
Instrument	ACIS	ACIS	Obspar format version number	6	6
Detector	ACIS-7	ACIS-7	Obspar file type	PREDICTED	ACTUAL
Grating	NONE	NONE	Obspar update status	NONE	UPDATED
Data mode	VFAINT	VFAINT	Number of optional ACIS chips dropped	0	0
Observation mode	POINTING	POINTING	On-chip summing requested	N	N
Pointing RA	359.958158	359.9830783634555	Subarray requested	CUSTOM	1/8
Pointing Dec	-12.711695	-12.69939934641627	Subarray start row	447	447
Pointing Roll	356.350245	356.5123820060356	Subarray row count	128	128
SIM focus pos (mm)	-0.684267	-0.6828225247311905	Alternating exposures requested	N	N
SIM defocus (mm)	0	0.001444936568705701	Primary exposure time	0.400000	0.4
SIM translation stage pos (mm)	-190.132523	-190.145094680475			
SIM translation stage offset (mm)	0	0.01257209746719923			
Observation start time	86111200.184000	86109971.587623			
Observation start date	2000-09-23T15:45:36	2000-09-23T15:26:11			
Observation end time	86116300.184000	86116617.175373			
Observation end date	2000-09-23T17:10:36	2000-09-23T17:16:57			
Read mode	TIMED	TIMED			

2.3 Aspect





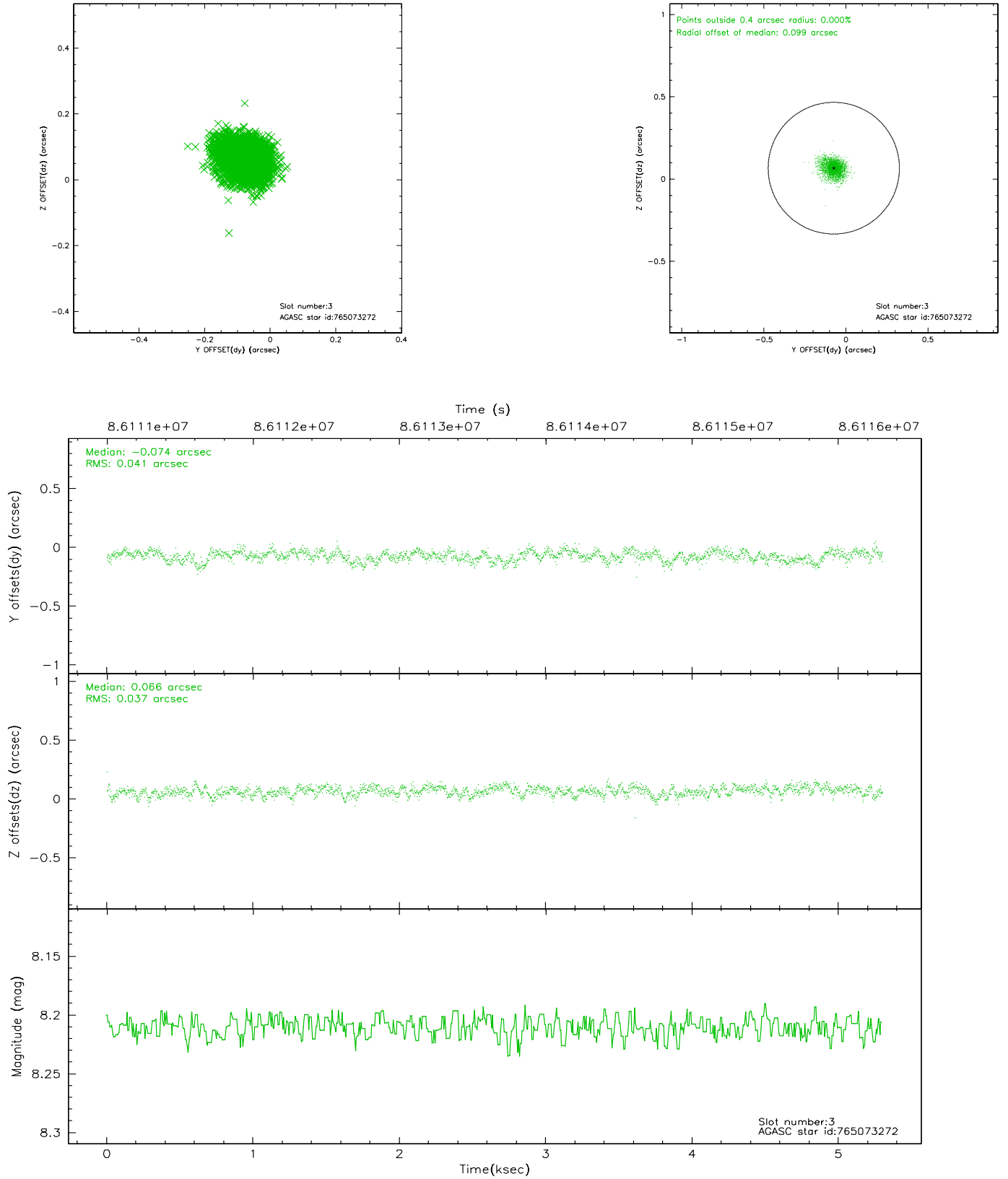
### Slot Statistics

slot	status	id	mag	n_pts	med_dy	med_dz	dr1	dr2	ra	dec	mean_y	mean_z
0	FID	ACIS-S-2	7.11	1293	-0.026	0.029	0.006	0.010	0.000000	0.000000	-754.43	-1727.27
1	FID	ACIS-S-4	7.21	1293	-0.067	0.005	0.005	0.009	0.000000	0.000000	2158.28	180.04
2	FID	ACIS-S-5	7.24	1293	0.062	-0.025	0.006	0.009	0.000000	0.000000	-1805.73	174.95
3	GUIDE	765073272	8.21	2585	-0.074	0.066	0.058	0.096	359.276625	-12.960392	-2327.23	-1048.98
4	GUIDE	764678120	9.13	2585	-0.096	-0.000	0.080	0.133	359.861168	-12.346239	-423.38	1290.61
5	GUIDE	690231144	10.10	2574	0.070	-0.025	0.117	0.186	0.489255	-12.548911	1827.02	702.09
6	GUIDE	765071528	9.94	2584	0.142	-0.049	0.133	0.327	359.984569	-12.933259	145.93	-790.05
7	GUIDE	689834096	9.44	2584	-0.060	0.008	0.085	0.137	0.124752	-12.402416	515.46	1147.78

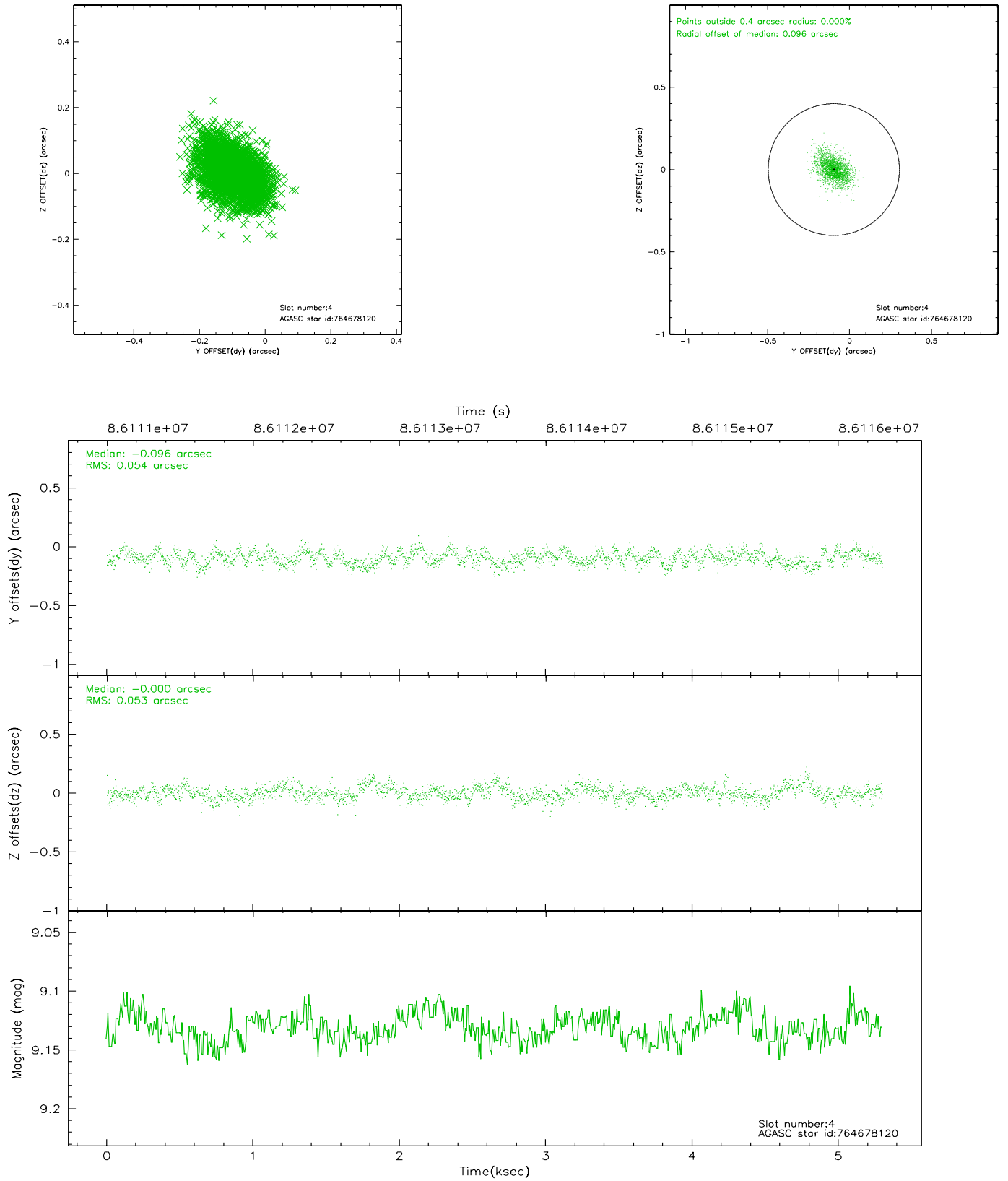


## 2.4 Star Slots

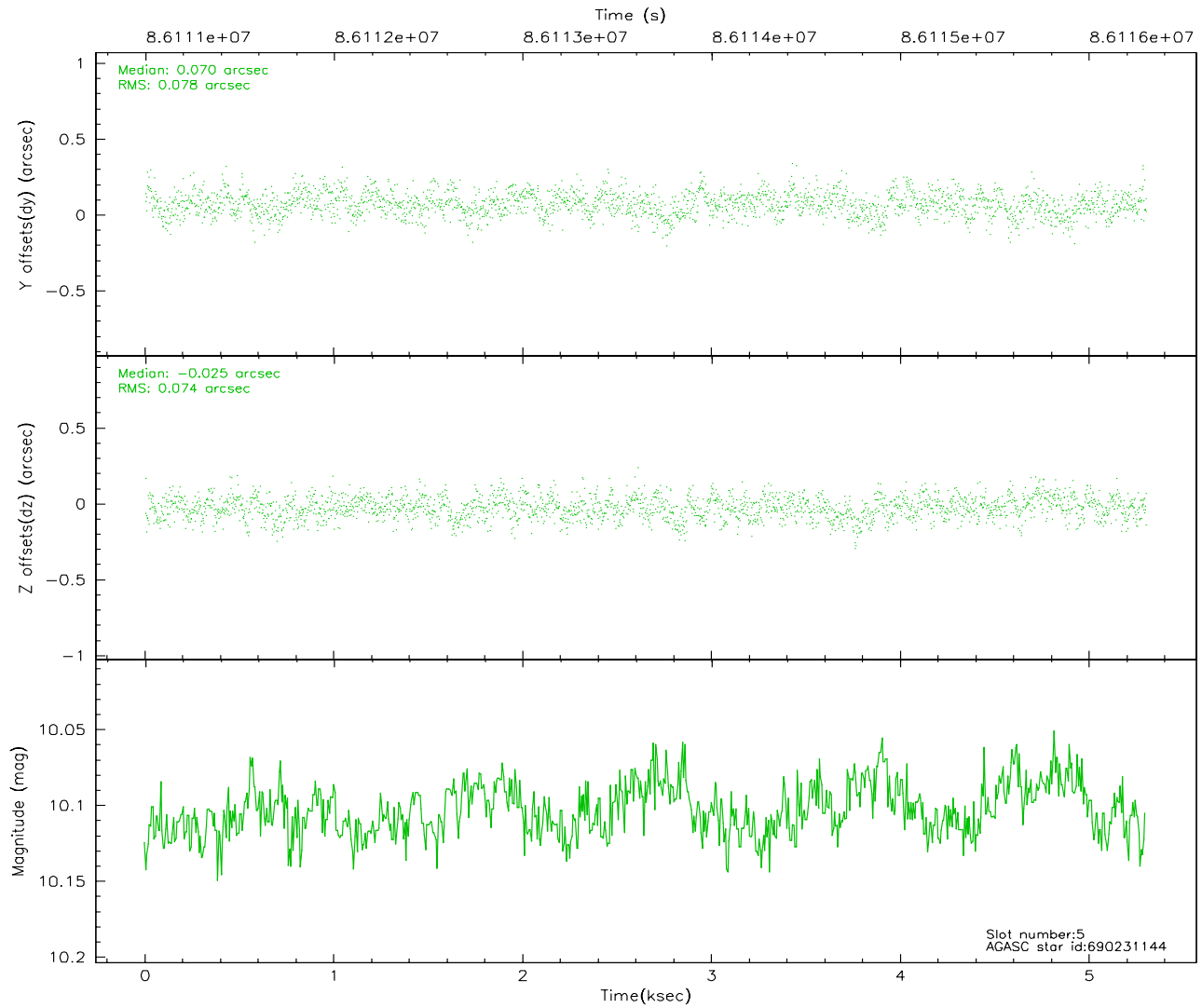
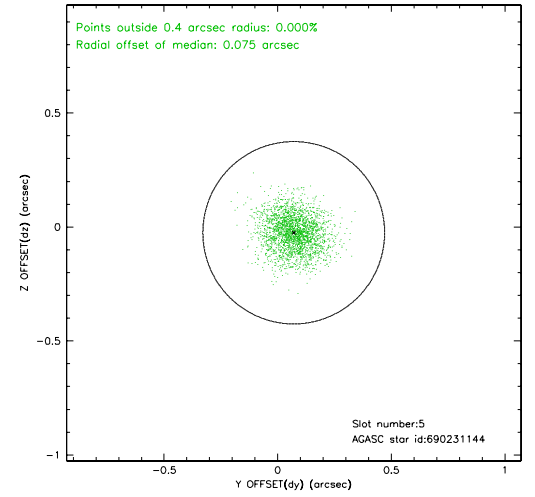
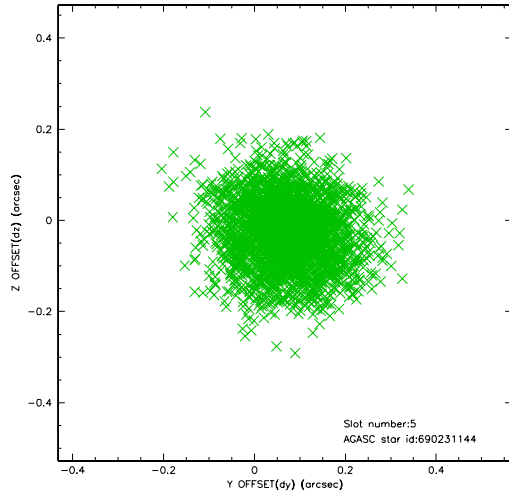
### 2.4.1 Slot 3



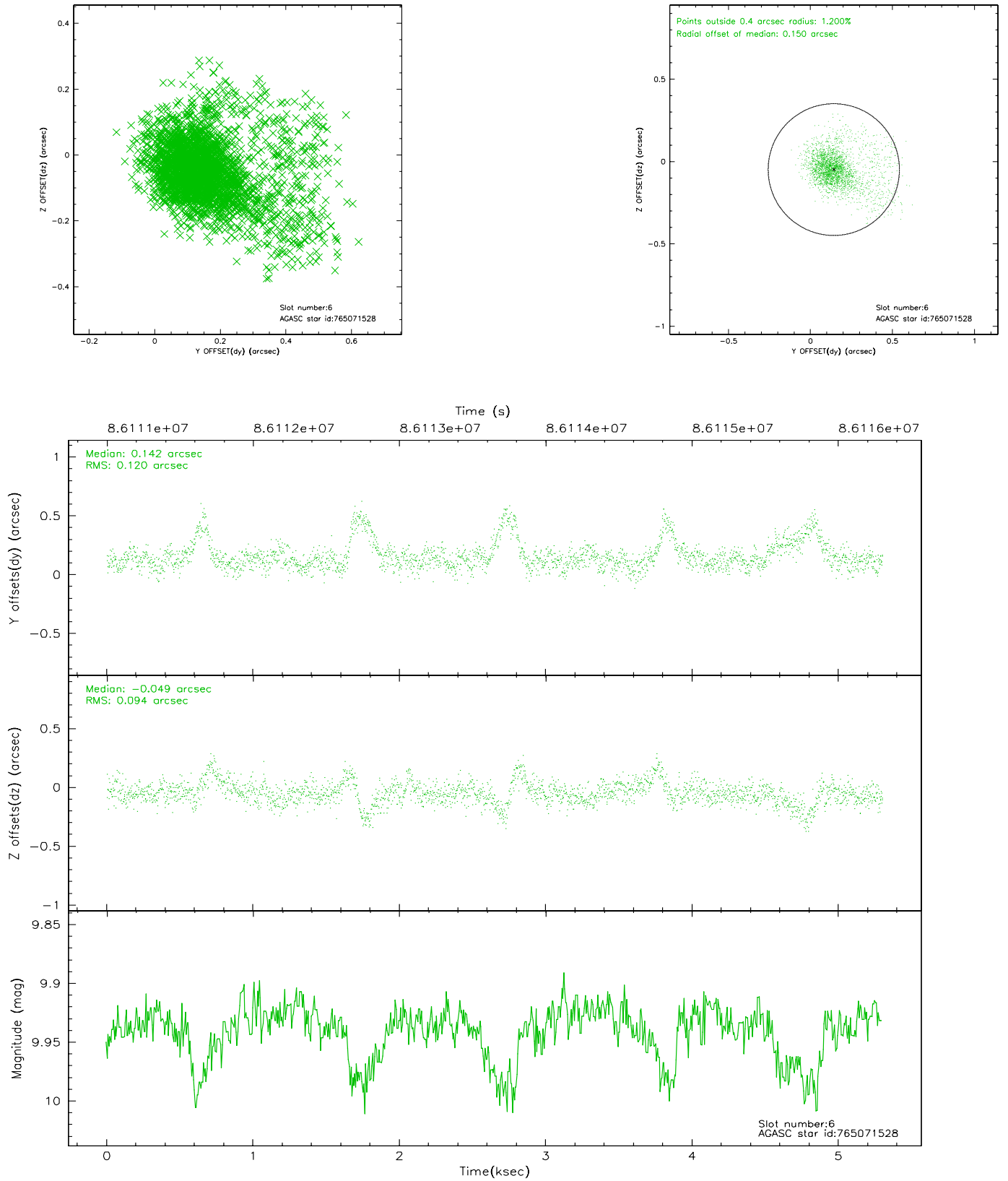
## 2.4.2 Slot 4



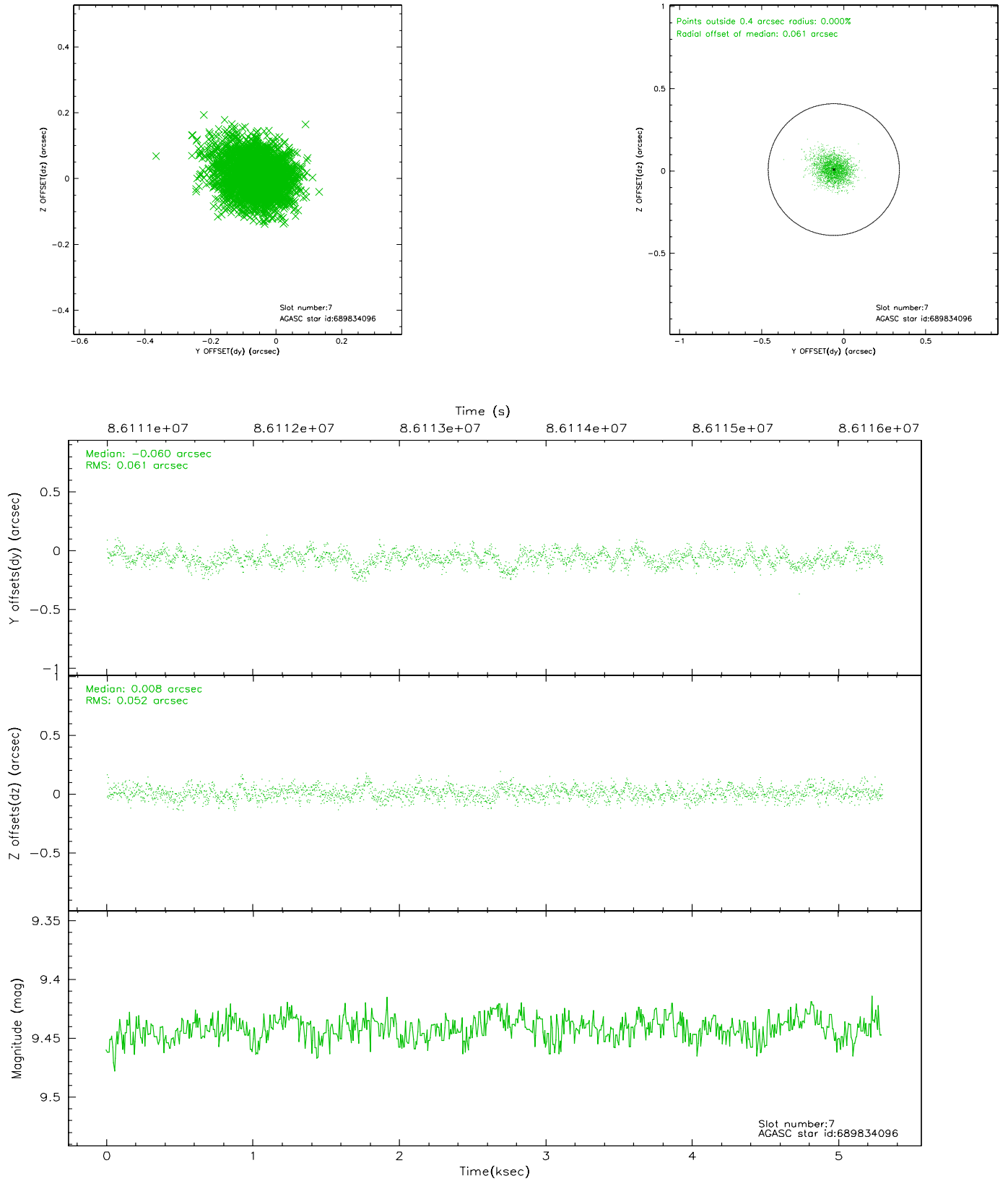
### 2.4.3 Slot 5



## 2.4.4 Slot 6

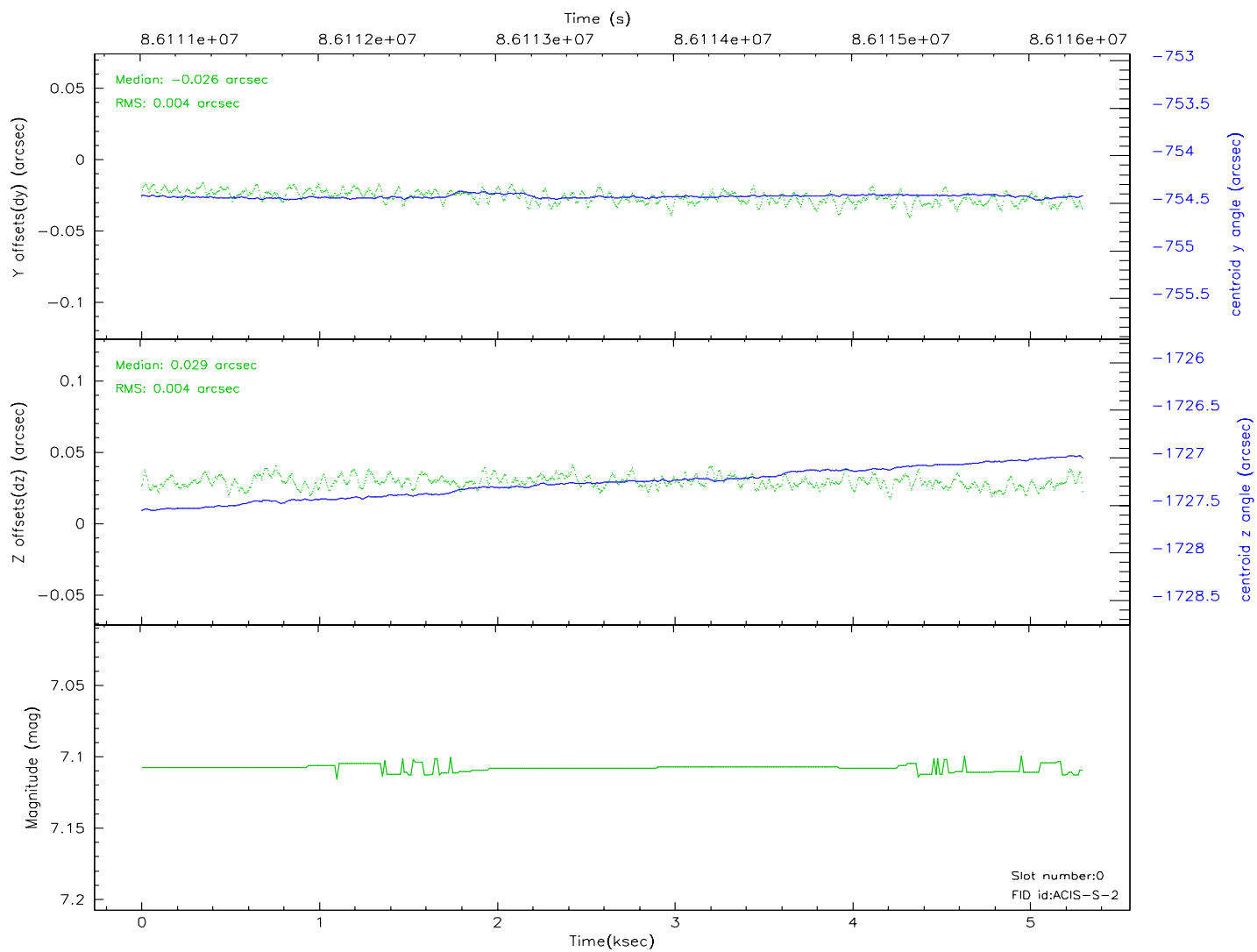
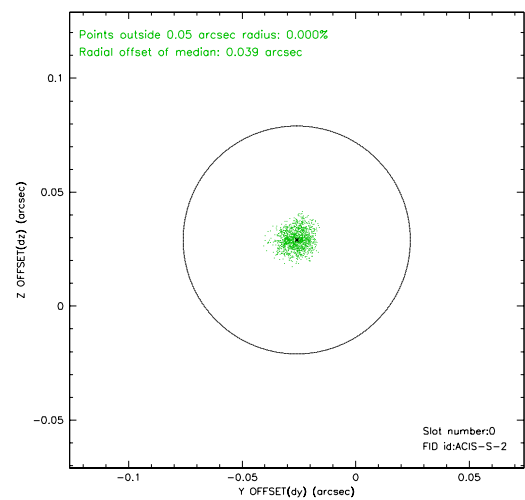
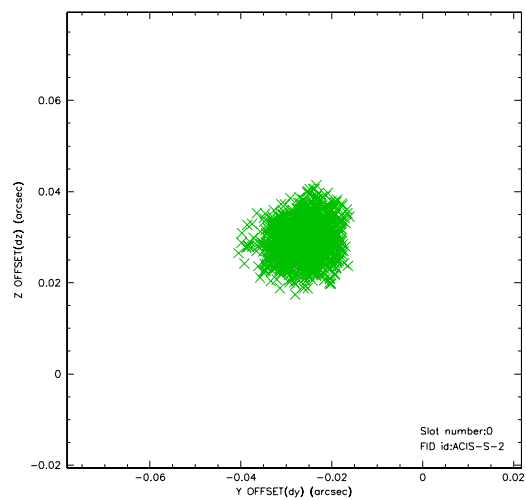


## 2.4.5 Slot 7

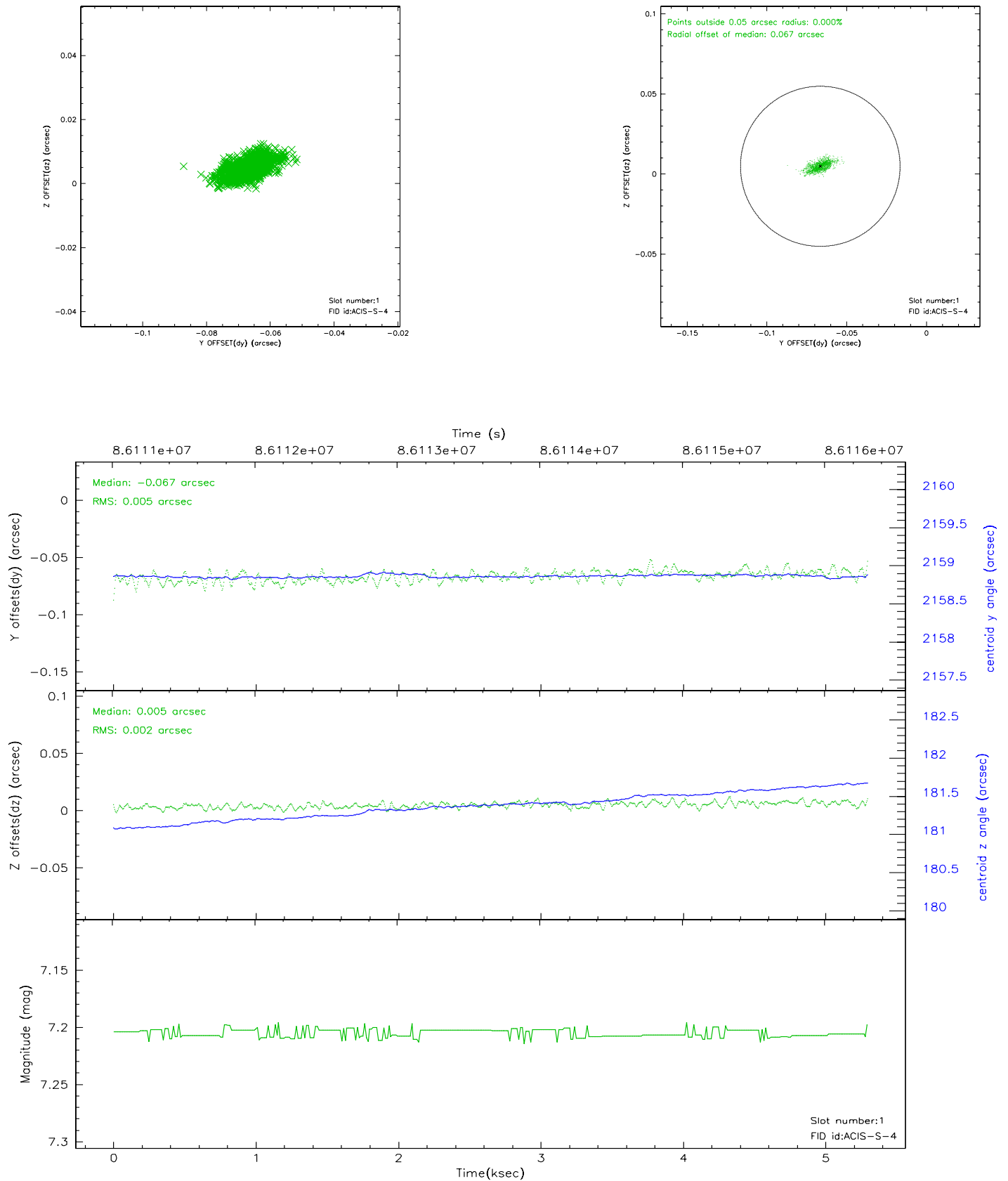


## 2.5 FID Slots

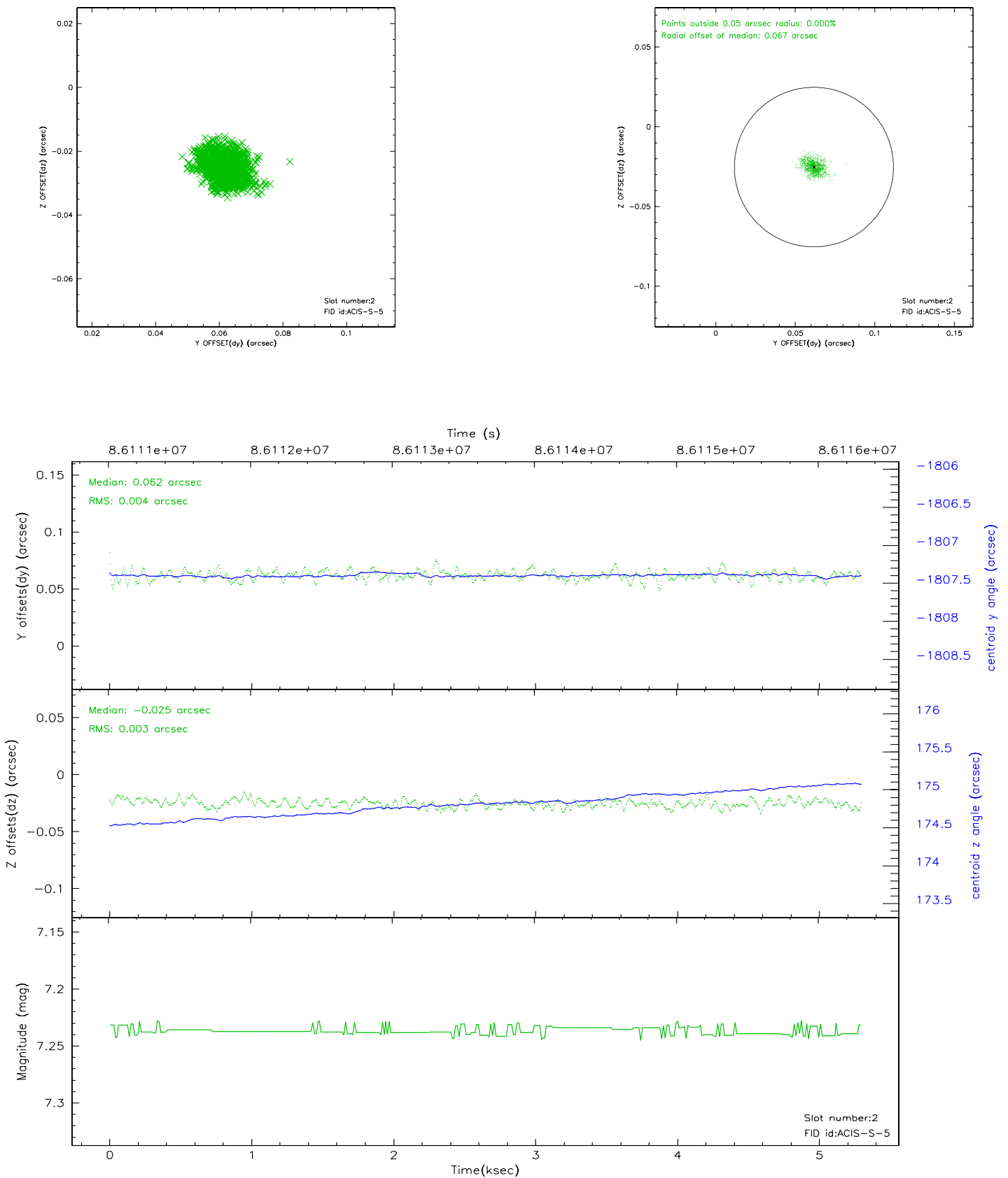
### 2.5.1 Slot 0



## 2.5.2 Slot 1



## 2.5.3 Slot 2





### 3 Point Sources

## A Summary

### A.1 Status

V&V Scientist	Jen Lauer
V&V Date (YYYY-MM-DD)	2007.06.08
V&V Edition	1
V&V Disposition and Status	OK
V&V Charge Time	5.295

### A.2 Comments