

V&V Reference Report

L2 ASCDS Version : 8.4.4

Observation 8364 - L2 Version 3
Chandra X-Ray Center

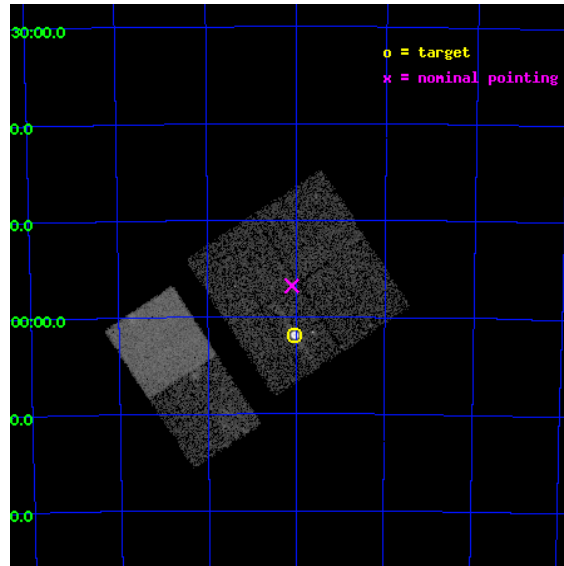
L2 Processing Date : Apr 20 2012

Contents

1	Front	2
2	OBI	3
2.1	OBI	3
2.1.1	Images	3
2.1.2	Bias	3
2.1.3	Parameters	4
2.1.4	Events	4
2.2	Compared Parameters	5
2.3	Aspect	6
2.4	Star Slots	9
2.4.1	Slot 3	9
2.4.2	Slot 4	10
2.4.3	Slot 5	11
2.4.4	Slot 6	12
2.4.5	Slot 7	13
2.5	FID Slots	14
2.5.1	Slot 0	14
2.5.2	Slot 1	15
2.5.3	Slot 2	16
A	Summary	17
A.1	Status	17
A.2	Comments	17

1 Front

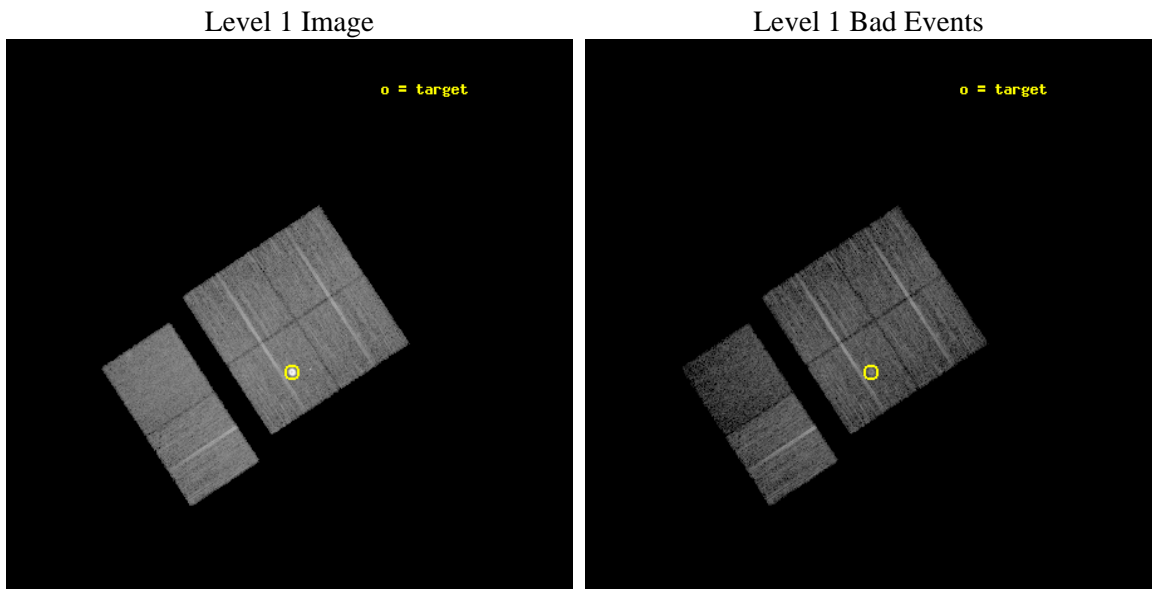
seq_num	590457	Sequence number
obs_id	8364	Observation id
title	AO8 Calibration Observations of E0102-72	Proposal title
observer	Dr. CXC Calibration	Principal investigator
object	E0102-72[I2,-120,4.7,2.5,0]	Source name
dtcycle	0	
cycle	P	events from which exps? Prim/Second/Both
ra_targ	16.01	Observer's specified target RA [deg]
dec_targ	-72.032028	Observer's specified target Dec [deg]
ra_nom	16.024961110692	Nominal RA [deg]
dec_nom	-71.94638482842	Nominal Dec [deg]
roll_nom	236.70318948019	Nominal Roll [deg]
revision	3	Processing version of data
ontime	8556.799968183	Sum of GTIs [s]
livetime	8448.4486146995	Livetime [s]
ontime0	8556.799968183	Sum of GTIs [s]
ontime1	8556.799968183	Sum of GTIs [s]
ontime2	8556.799968183	Sum of GTIs [s]
ontime3	8553.5589978695	Sum of GTIs [s]
ontime6	8556.799968183	Sum of GTIs [s]
ontime7	8556.799968183	Sum of GTIs [s]
l2events	79181	Number of level 2 events



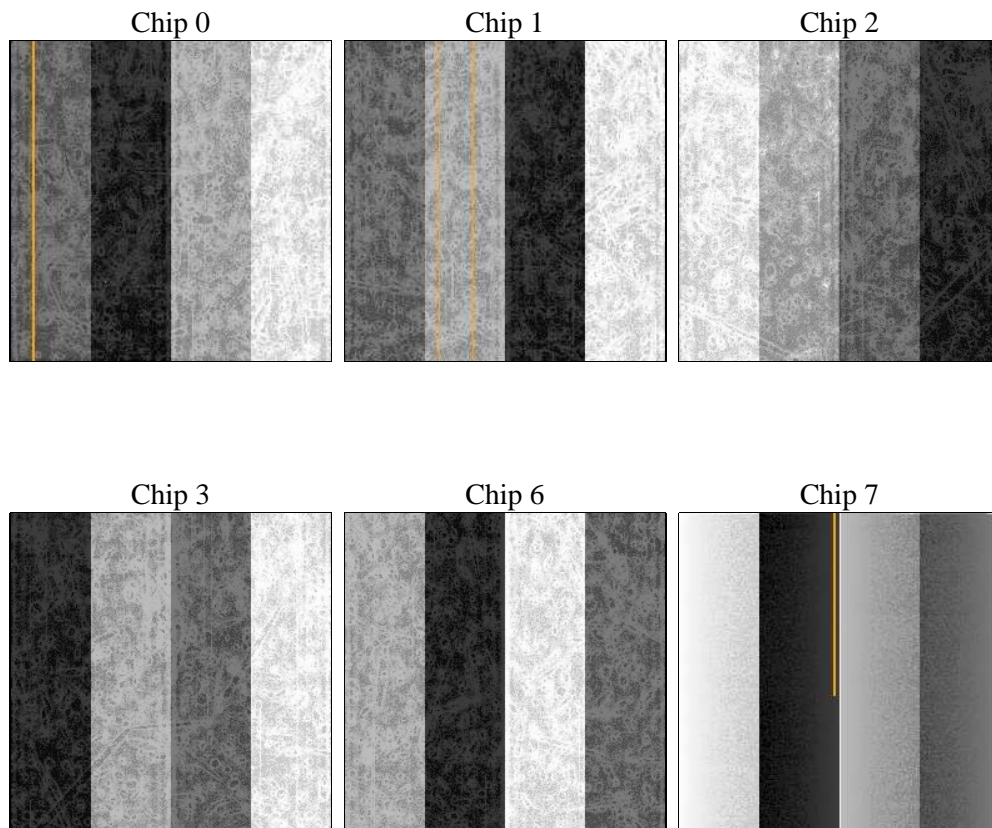
2 OBI

2.1 OBI

2.1.1 Images



2.1.2 Bias



2.1.3 Parameters

obi_num	1	Obi number	sched_exp_time	8800.000000	[s] Scheduled observation exposure time
ascdsver	8.4.4	Processing system revision	ontime	8556.799968183	Sum of GTIs [s]
caldsver	4.4.9	 	ontime0	8556.799968183	Sum of GTIs [s]
date	2012-04-20T03:19:54	Date and time of file creation	ontime1	8556.799968183	Sum of GTIs [s]
revision	3	Processing version of data	ontime2	8556.799968183	Sum of GTIs [s]
			ontime3	8553.5589978695	Sum of GTIs [s]
			ontime6	8556.799968183	Sum of GTIs [s]
			ontime7	8556.799968183	Sum of GTIs [s]
			l1events	393192	Number of level 1 events

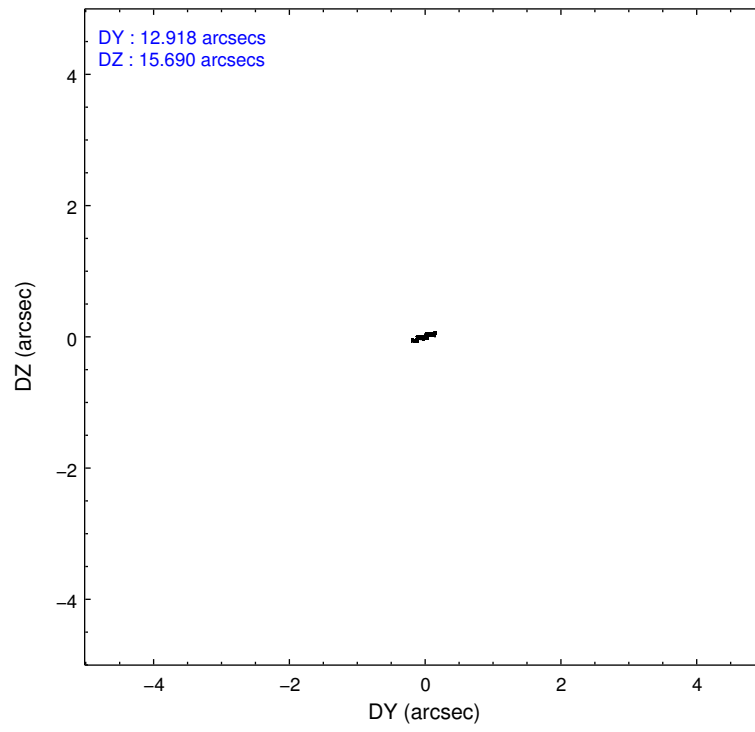
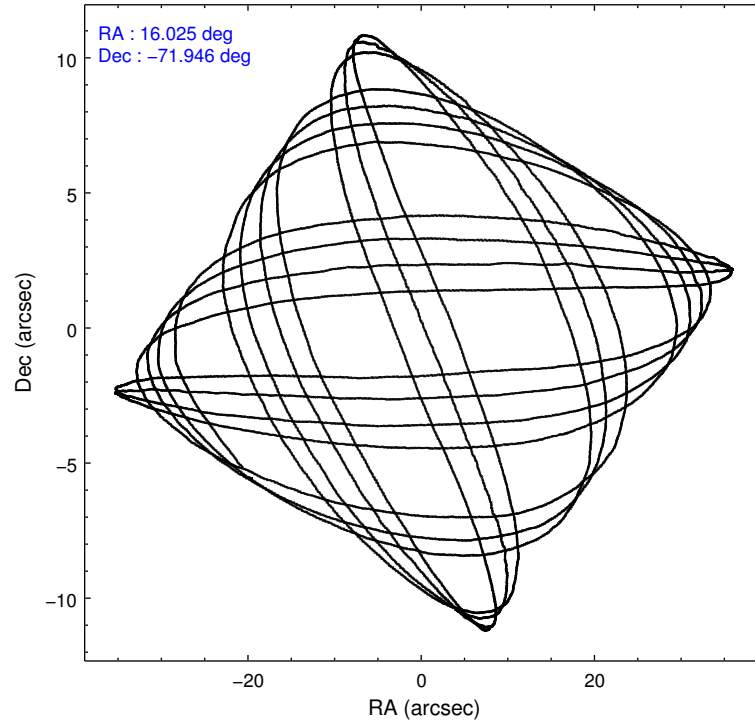
2.1.4 Events

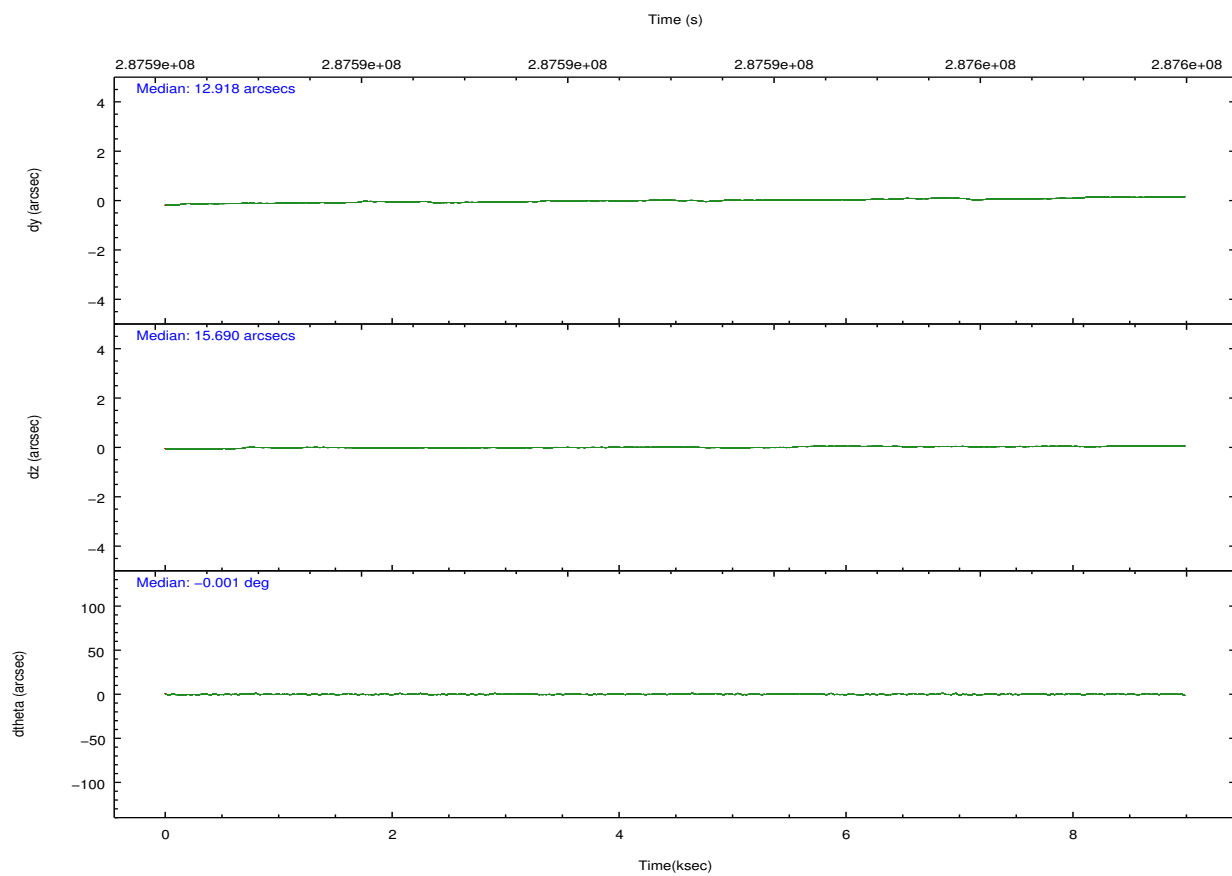
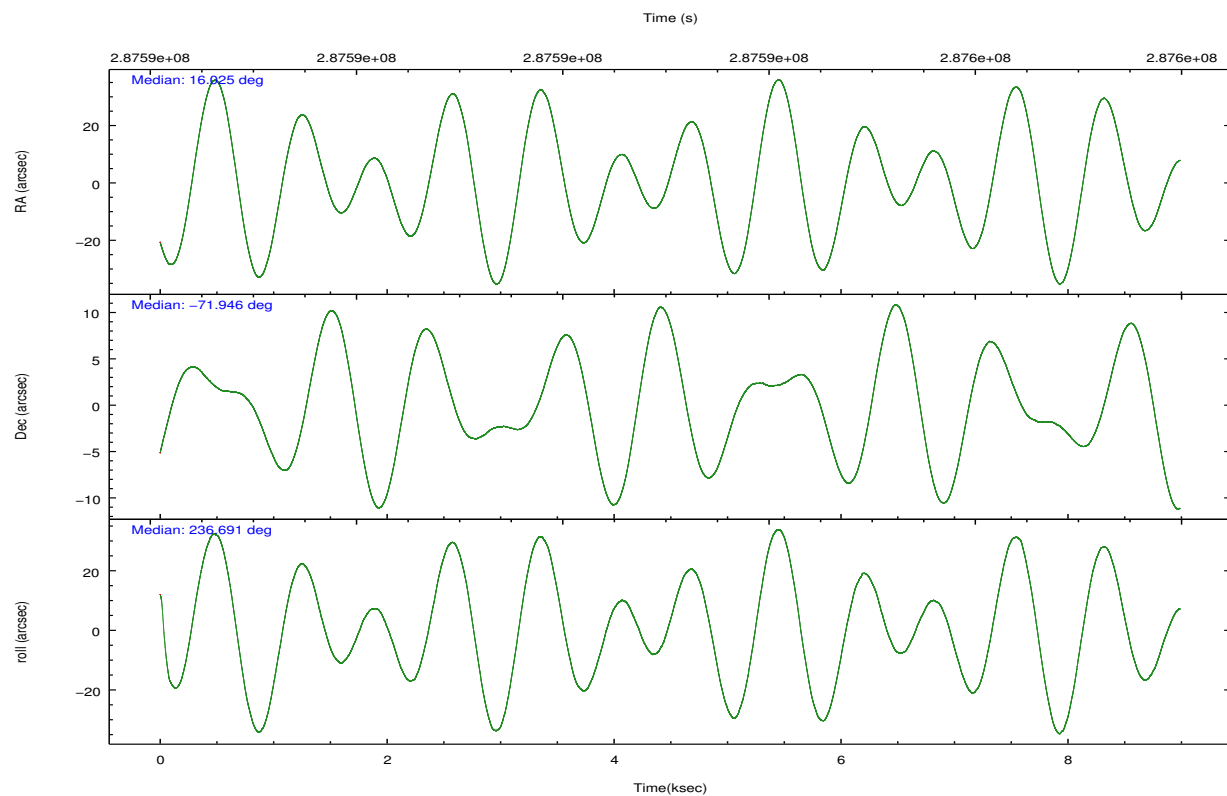
	ccd 0	ccd 1	ccd 2	ccd 3	ccd 6	ccd 7		ccd 0	ccd 1	ccd 2	ccd 3	ccd 6	ccd 7
level 1 events	58513	57910	90667	61029	66638	58435	grade 0 events	2362	2316	24996	2118	2875	3033
rejected events	52332	51486	59043	55433	59660	29500		4%	3%	27%	3%	4%	5%
rejected %	89%	88%	65%	90%	89%	50%	grade 1 events	35	19	281	36	31	108
								0%	0%	0%	0%	0%	0%
							grade 2 events	1418	1430	3258	1183	1481	6141
								2%	2%	3%	1%	2%	10%
							grade 3 events	688	709	1035	625	661	2815
								1%	1%	1%	1%	0%	4%
							grade 4 events	633	701	1143	614	670	2776
								1%	1%	1%	1%	1%	4%
							grade 5 events	1785	1964	1780	2065	2143	6208
								3%	3%	1%	3%	3%	10%
							grade 6 events	1082	1274	1219	1060	1298	14191
								1%	2%	1%	1%	1%	24%
							grade 7 events	50510	49497	56955	53328	57479	23163
								86%	85%	62%	87%	86%	39%

2.2 Compared Parameters

Parameter	Planned	Actual	Parameter	Planned	Actual
Instrument	ACIS	ACIS	Obspar format version number	7	7
Detector	ACIS-012367	ACIS-012367	Obspar file type	PREDICTED	ACTUAL
Grating	NONE	NONE	Obspar update status	NONE	UPDATED
Data mode	VFAINT	VFAINT	CCD I0 on	Y	Y
Observation mode	POINTING	POINTING	CCD I1 on	Y	Y
[deg] Pointing RA	16.029770	16.02496111069197	CCD I2 on	Y	Y
[deg] Pointing Dec	-71.918953	-71.94638482841955	CCD I3 on	Y	Y
[deg] Pointing Roll	236.499049	236.7031894801862	CCD S0 on	N	N
[s] Window start time (MET)	281318465.184000	281318465.184000	CCD S1 on	N	N
[s] Window stop time (MET)	294278465.184000	294278465.184000	CCD S2 on	O1	Y
[mm] SIM focus pos	-0.782348	-0.7809083437167272	CCD S3 on	Y	Y
[mm] SIM defocus	0	0.001439871863259334	CCD S4 on	N	N
[mm] SIM translation stage pos	-233.592463	-233.5874344608287	CCD S5 on	N	N
[mm] SIM translation stage offset	0	-0.005018542100998502	Number of optional ACIS chips dropped	0	0
[s] Observation start time (MET)	287588731.184000	287588355.48787	On-chip summing requested	N	N
Observation start date	2007-02-11T13:44:26	2007-02-11T13:39:15	Subarray requested	NONE	NONE
[s] Observation end time (MET)	287597531.184000	287598401.51335	Alternating exposures requested	N	N
Observation end date	2007-02-11T16:11:06	2007-02-11T16:26:41	[s] Primary exposure time	0.000000	3.2
Read mode	TIMED	TIMED			

2.3 Aspect



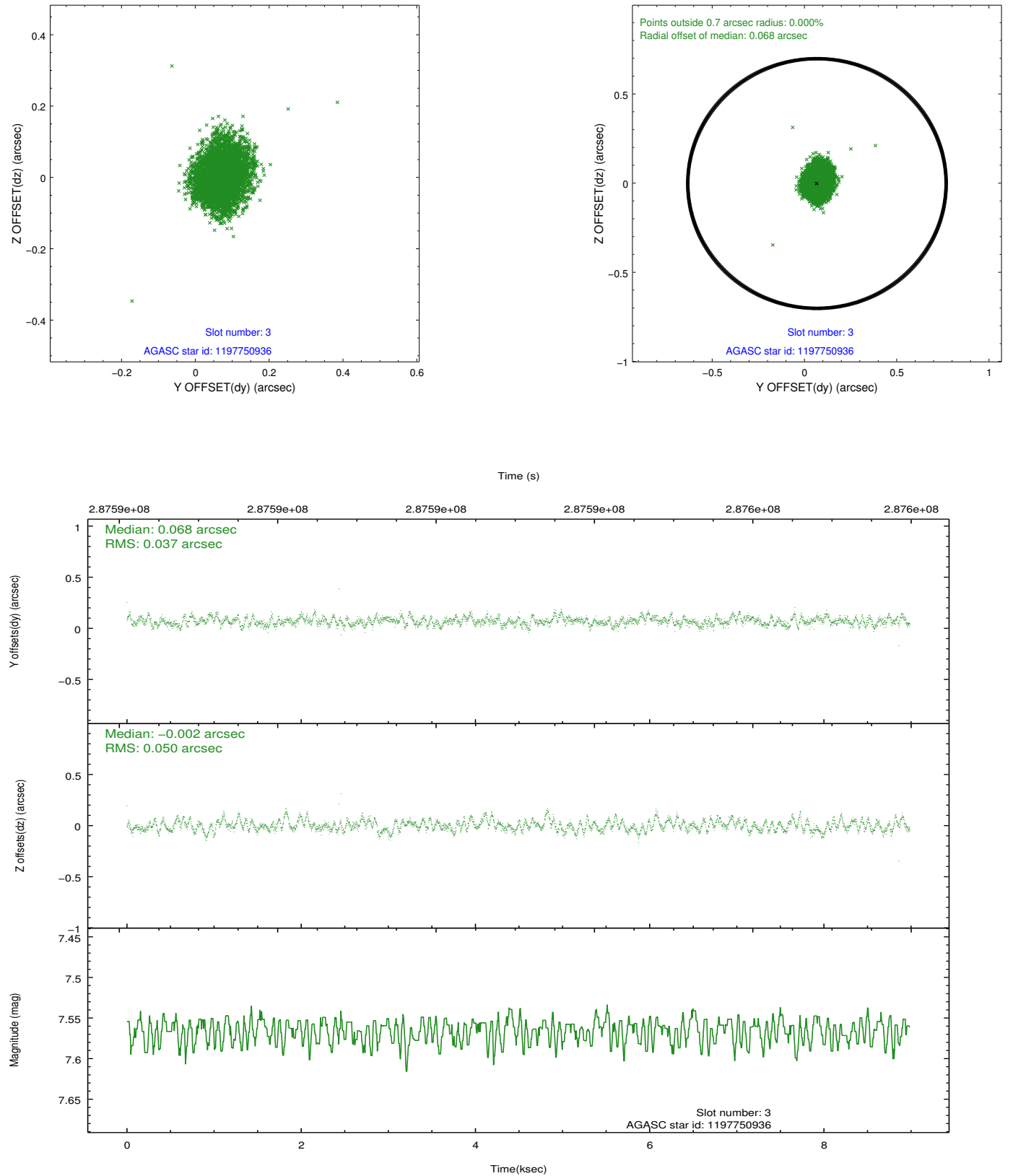


Slot Statistics

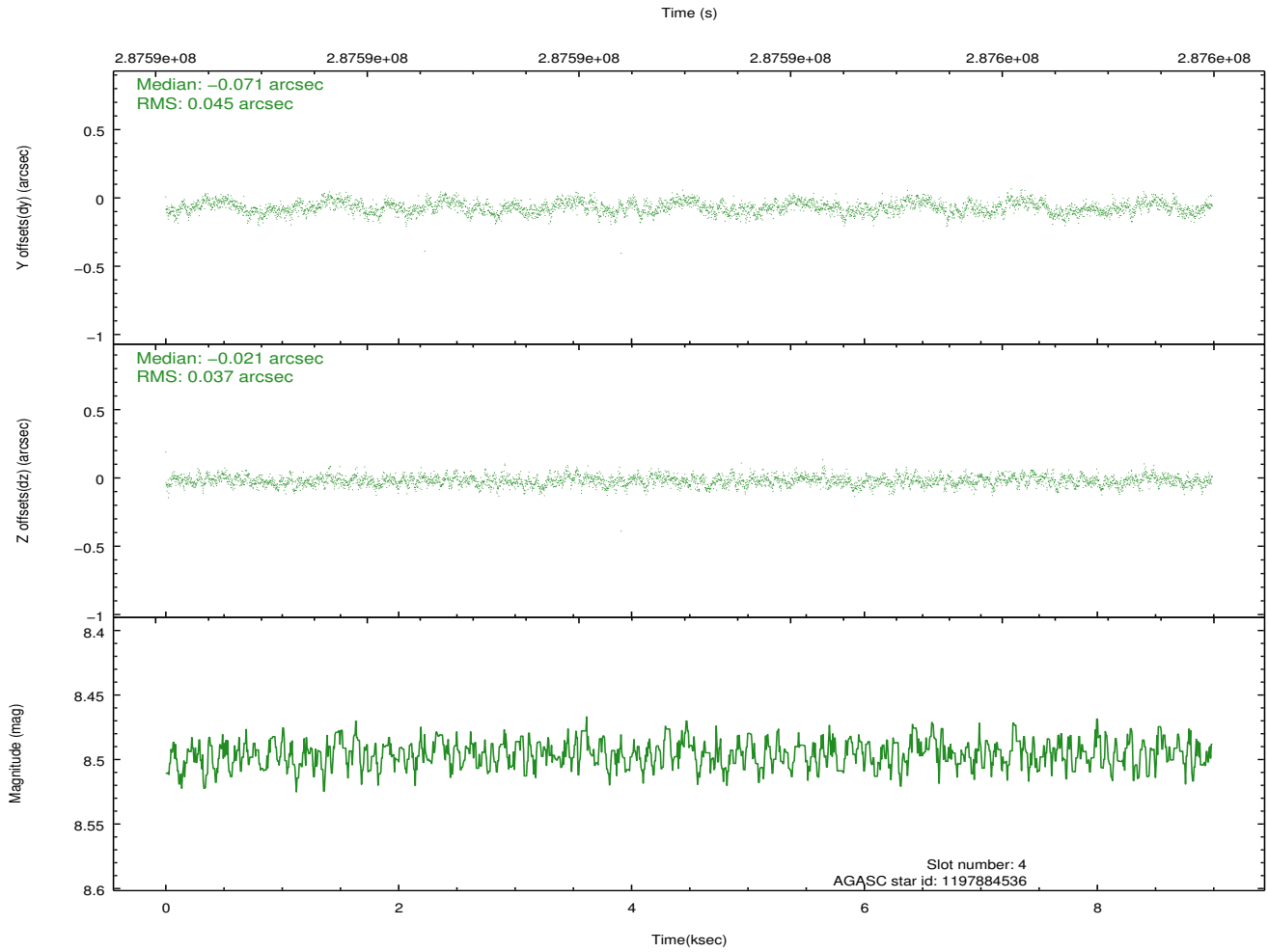
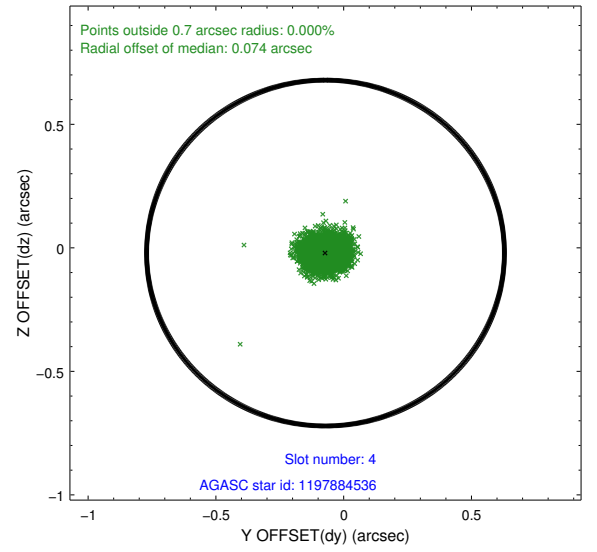
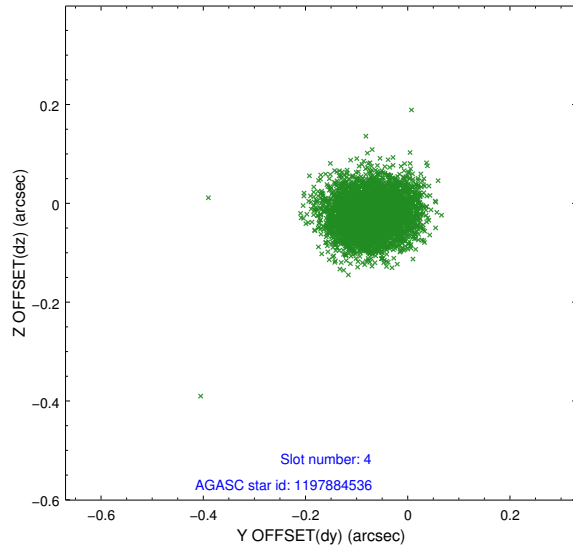
slot	status	id	mag	n_pts	med_dy	med_dz	dr1	dr2	ra	dec	mean_y	mean_z
0	FID	ACIS-I-1	7.23	2193	0.053	-0.047	0.008	0.013	0.000000	0.000000	926.64	-839.37
1	FID	ACIS-I-5	7.22	2193	-0.204	0.052	0.007	0.012	0.000000	0.000000	-1821.36	1057.95
2	FID	ACIS-I-6	7.24	2193	0.060	0.065	0.007	0.011	0.000000	0.000000	391.56	1703.12
3	GUIDE	1197750936	7.57	4384	0.068	-0.002	0.066	0.106	15.387940	-71.549550	-701.16	-1341.19
4	GUIDE	1197884536	8.50	4383	-0.071	-0.021	0.061	0.098	17.160729	-71.835289	-941.82	898.54
5	GUIDE	1197884712	8.30	4383	-0.060	-0.045	0.069	0.111	16.087398	-72.252690	966.95	716.68
6	GUIDE	1197885104	9.37	4382	0.037	-0.105	0.108	0.176	17.845067	-72.189368	-265.55	2220.92
7	GUIDE	1197885328	7.25	4383	0.018	0.166	0.059	0.099	16.283090	-71.733943	-712.99	-127.61

2.4 Star Slots

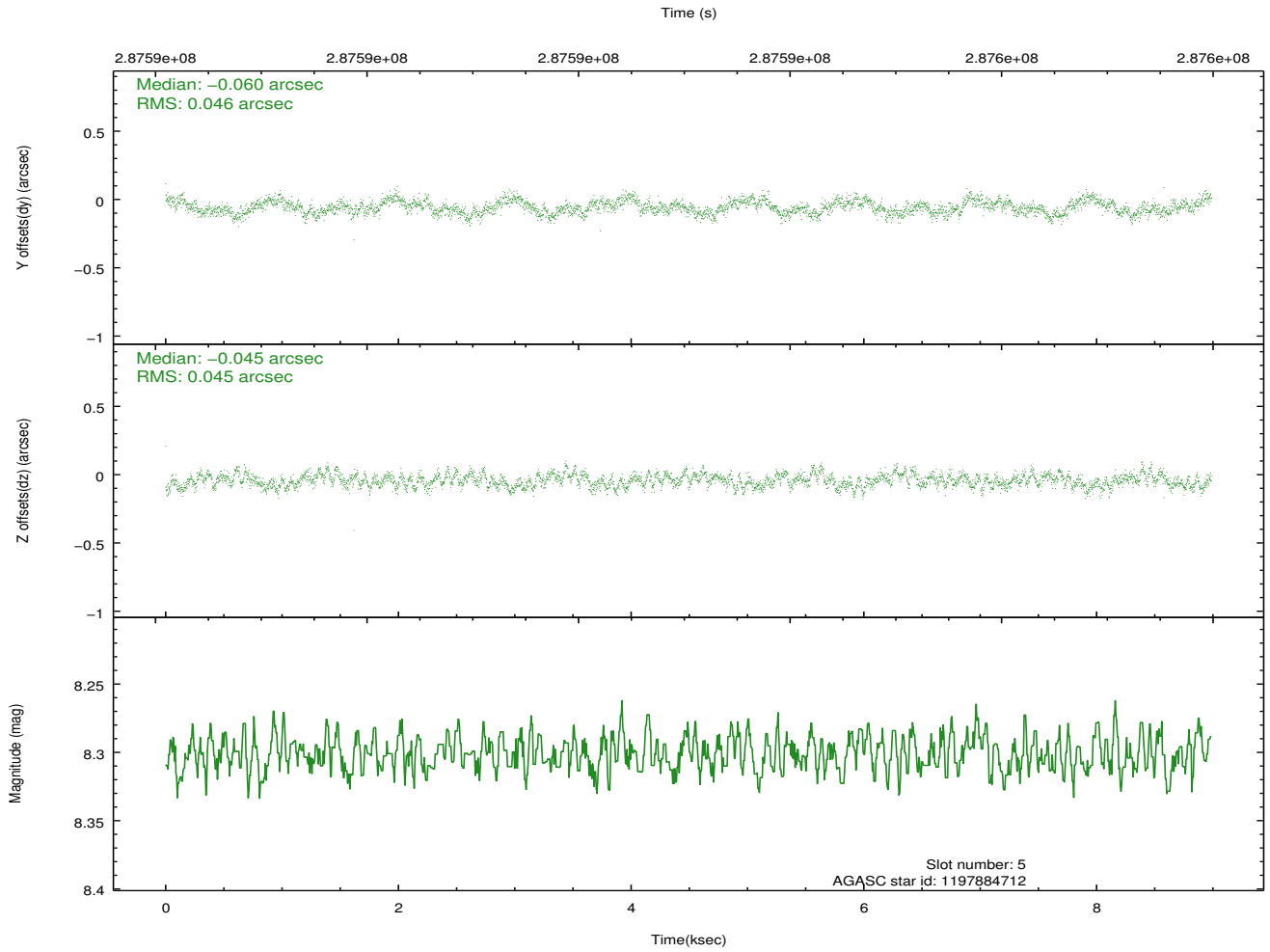
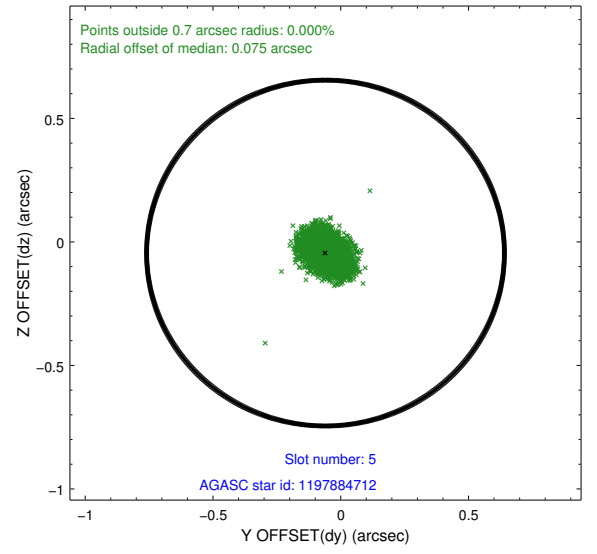
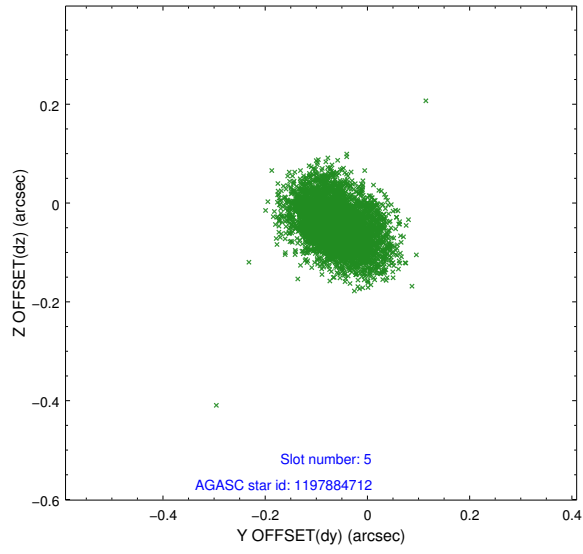
2.4.1 Slot 3



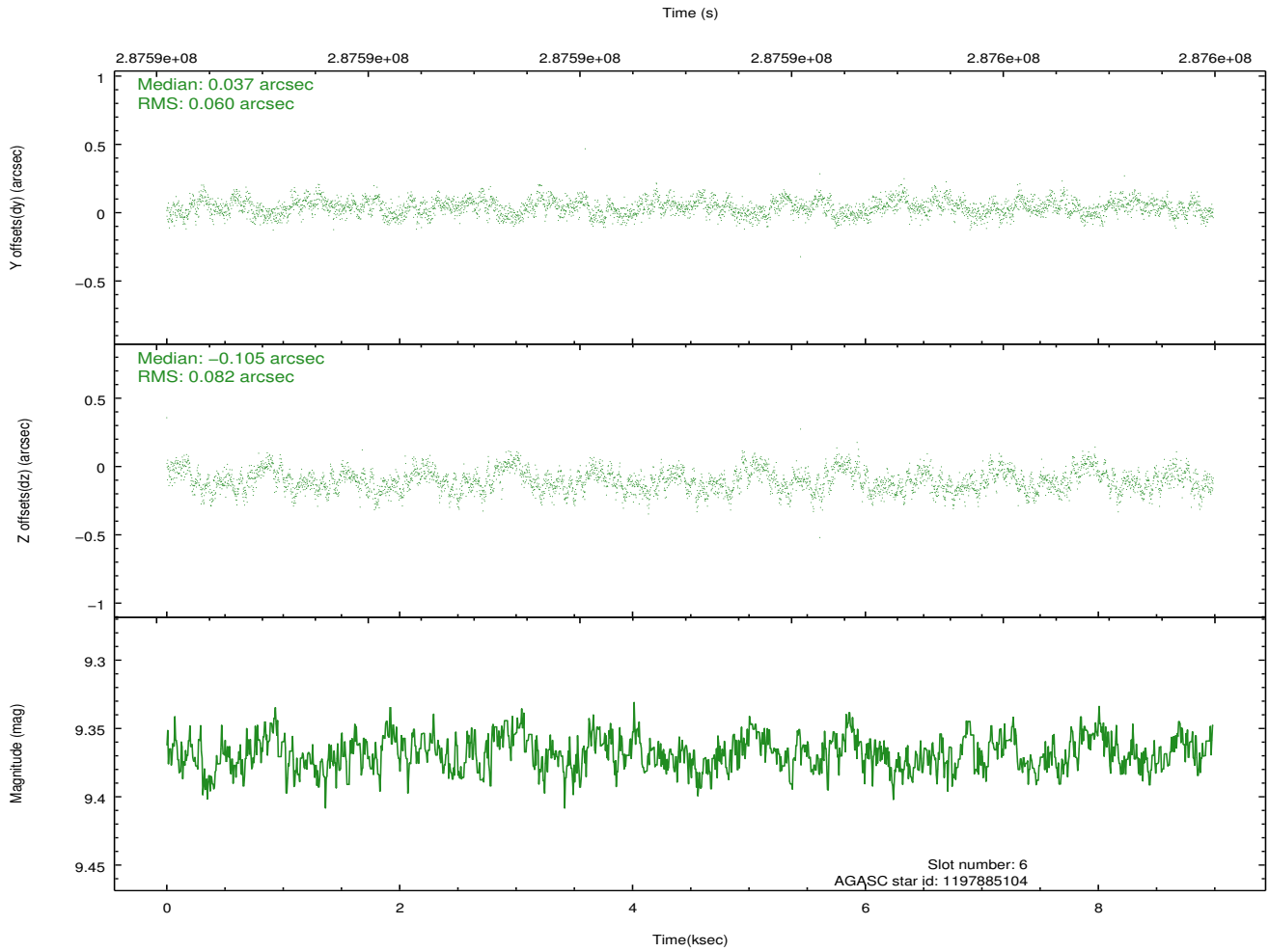
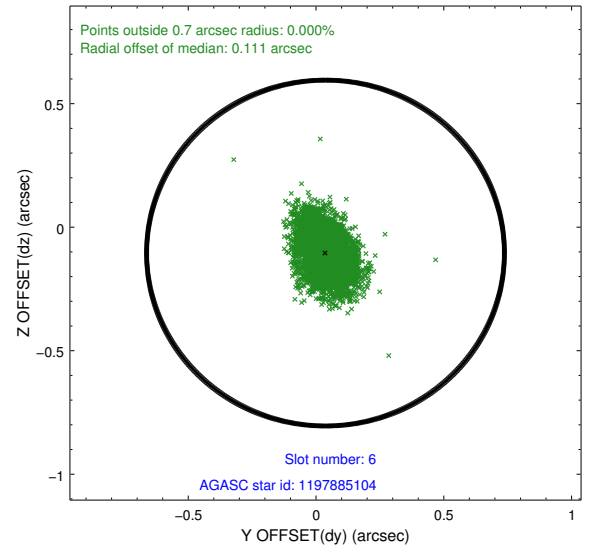
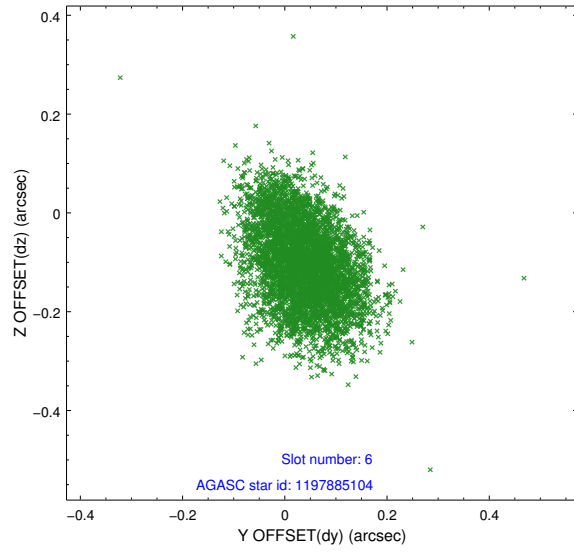
2.4.2 Slot 4



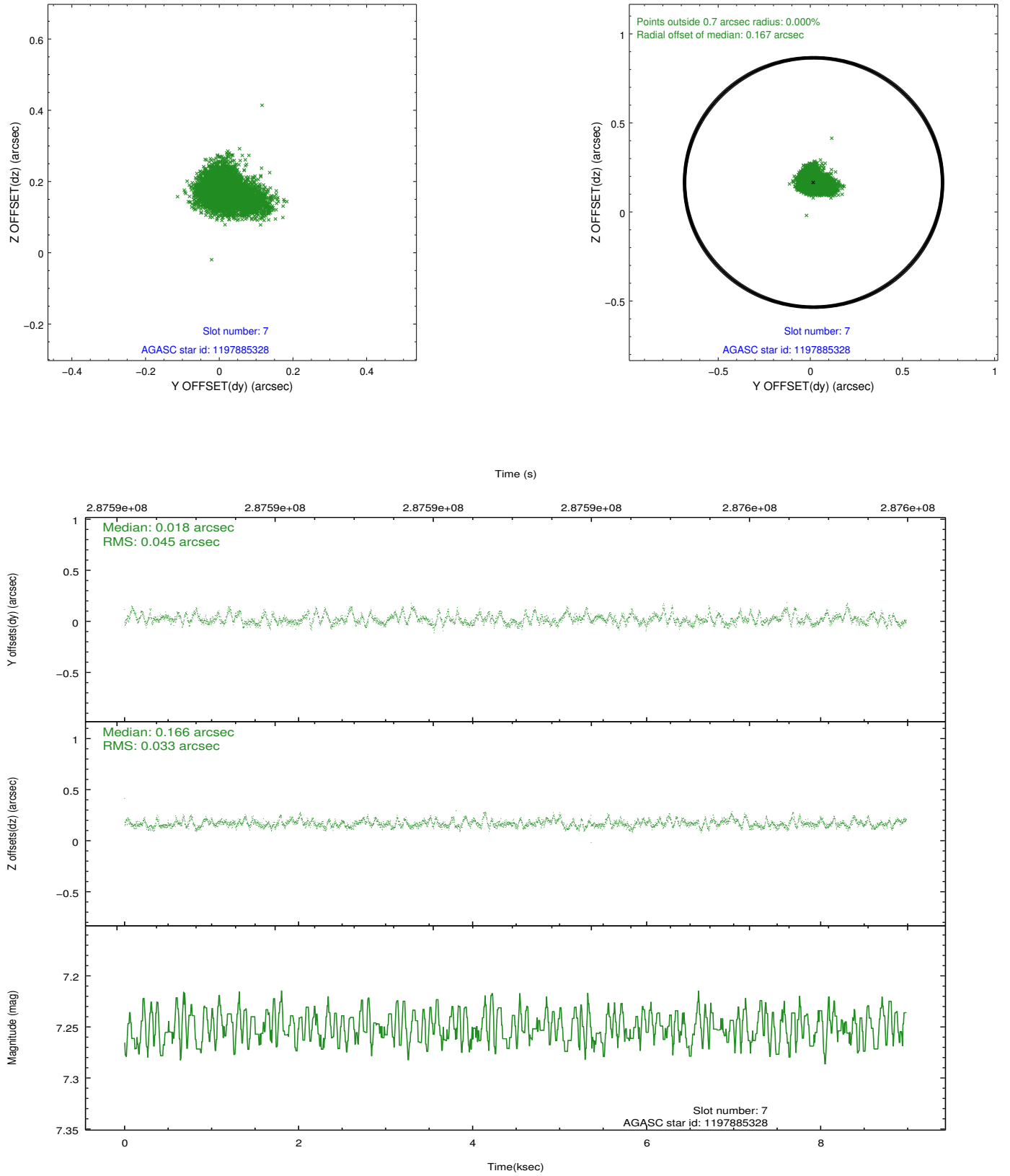
2.4.3 Slot 5



2.4.4 Slot 6

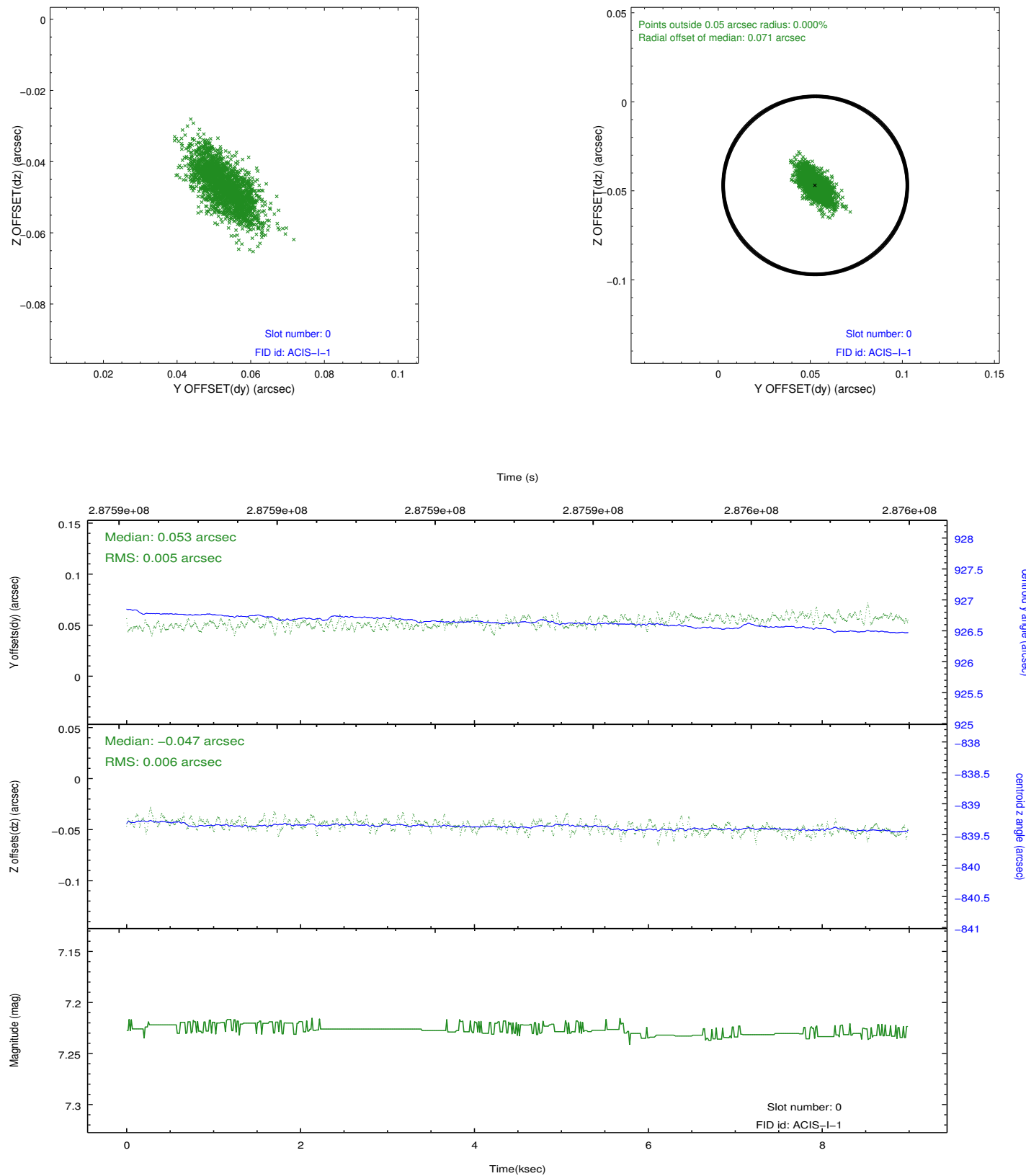


2.4.5 Slot 7

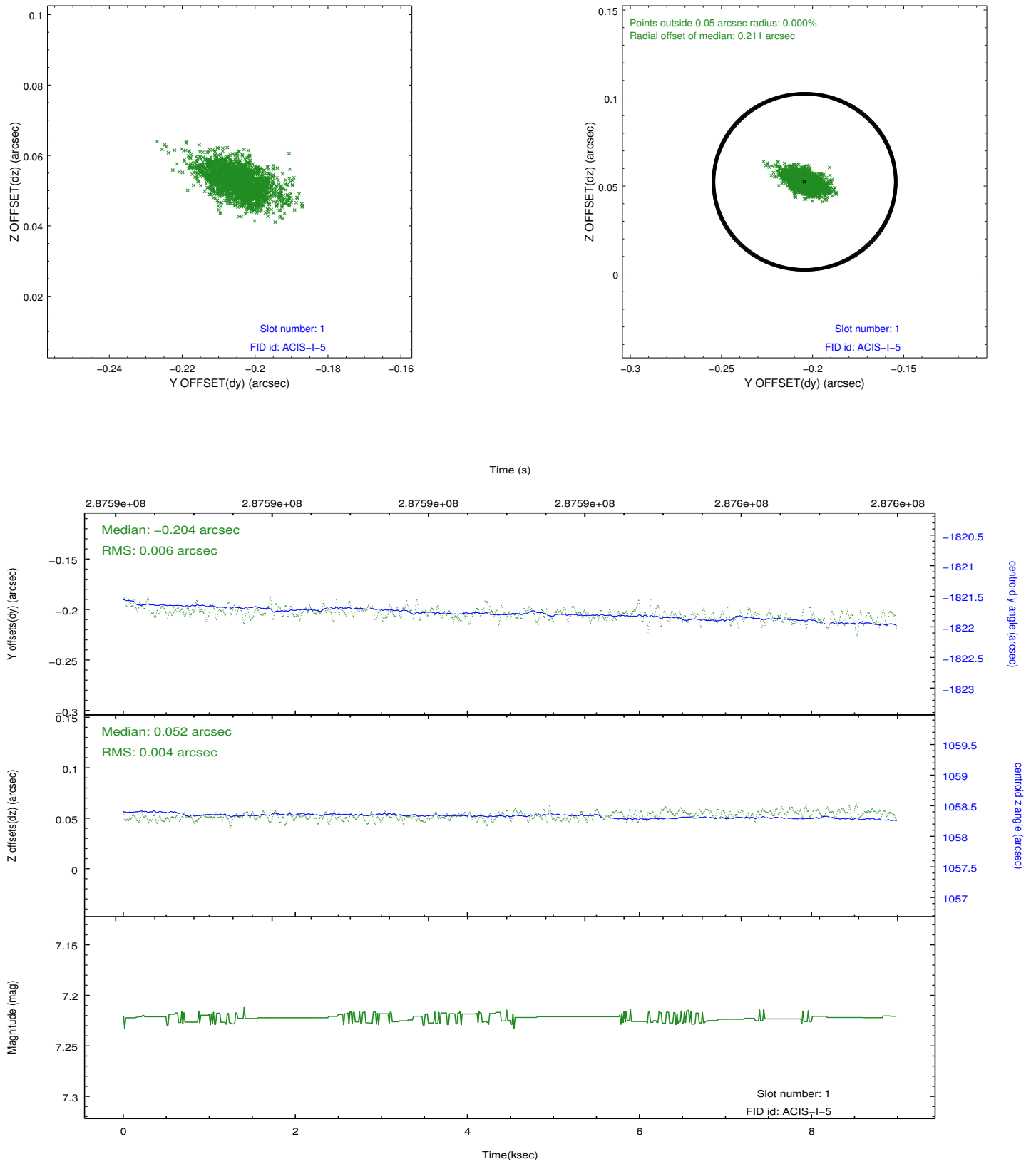


2.5 FID Slots

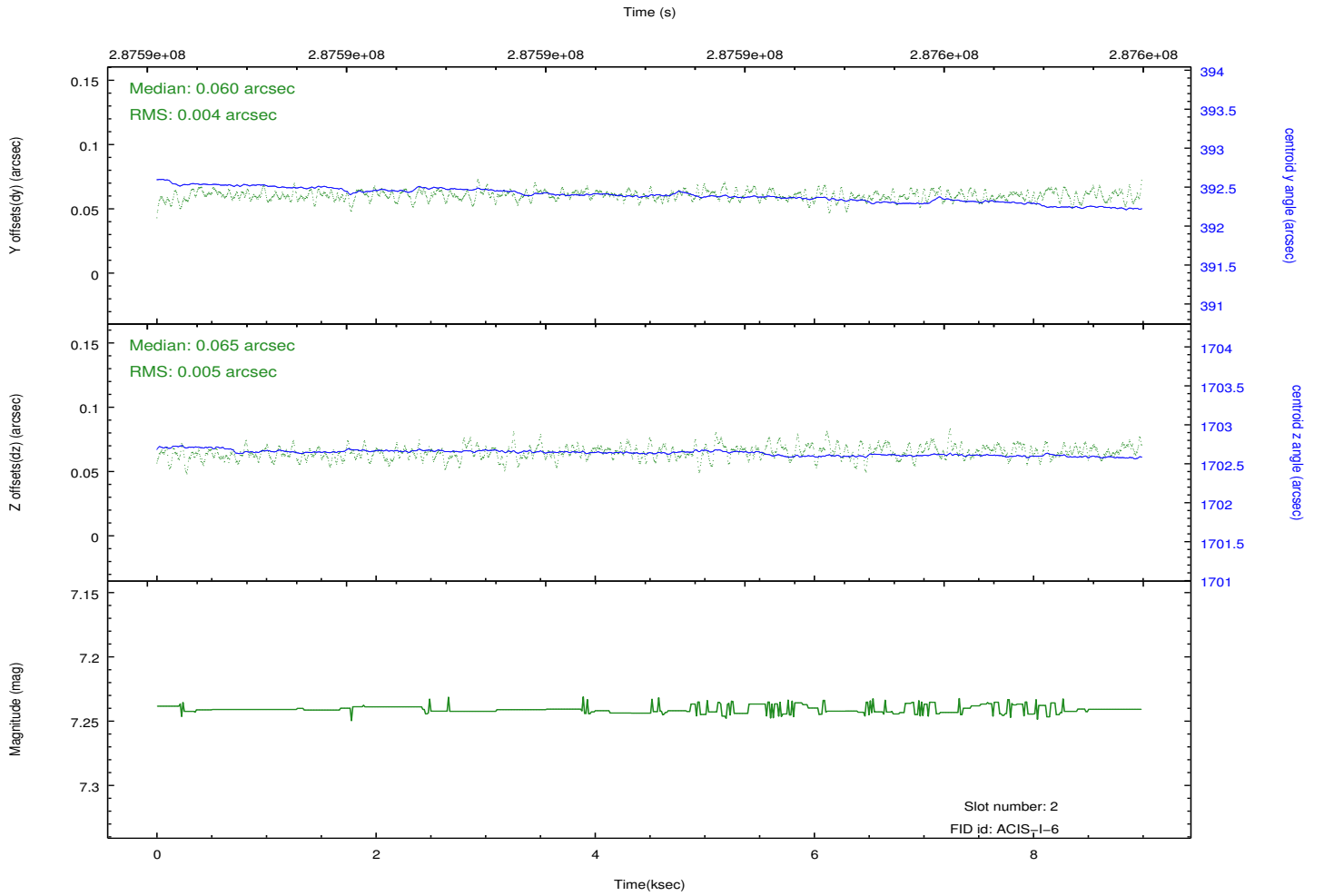
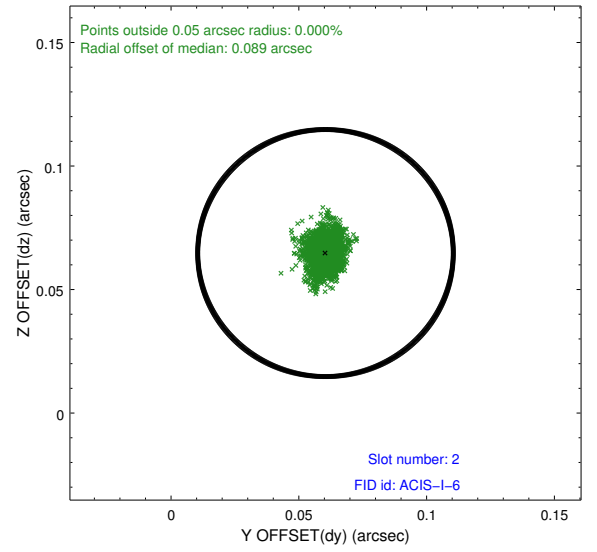
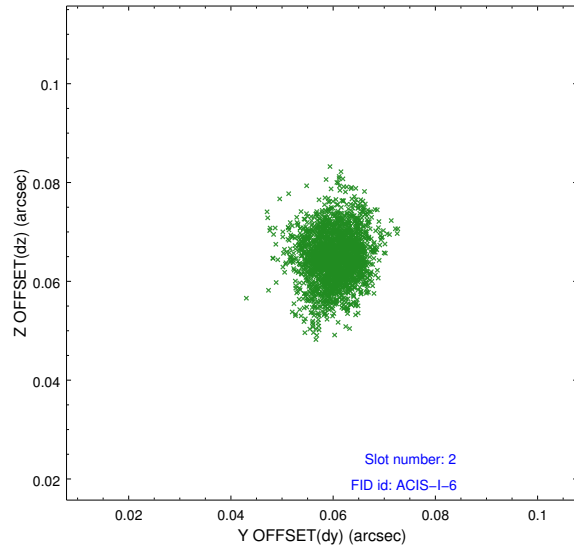
2.5.1 Slot 0



2.5.2 Slot 1



2.5.3 Slot 2



A Summary

A.1 Status

V&V Scientist	Beth Sundheim
V&V Date (YYYY-MM-DD)	2012.04.22
V&V Edition	1
V&V Disposition and Status	OK
V&V Charge Time	8.55679996

A.2 Comments

Window preference met.