

V&V Reference Report

L2 ASCDS Version : 8.4.4

Observation 8194 - L2 Version 2
Chandra X-Ray Center

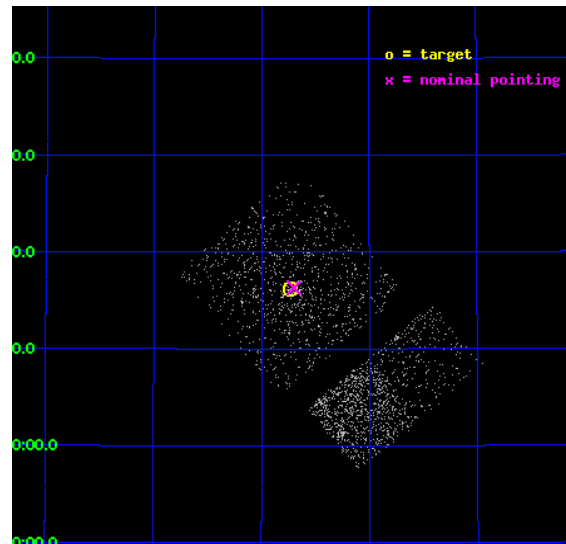
L2 Processing Date : Apr 30 2012

Contents

1	Front	2
2	OBI Primary	3
2.1	OBI	3
2.1.1	Images	3
2.1.2	Bias	3
2.1.3	Parameters	4
2.1.4	Events	4
2.2	Compared Parameters	5
2.3	Aspect	6
2.4	Star Slots	9
2.4.1	Slot 3	9
2.4.2	Slot 4	10
2.4.3	Slot 5	11
2.4.4	Slot 6	12
2.4.5	Slot 7	13
2.5	FID Slots	14
2.5.1	Slot 0	14
2.5.2	Slot 1	15
2.5.3	Slot 2	16
3	OBI Secondary	17
3.1	OBI	17
3.1.1	Images	17
3.1.2	Bias	17
3.1.3	Parameters	18
3.1.4	Events	18
A	Summary	19
A.1	Status	19
A.2	Comments	19

1 Front

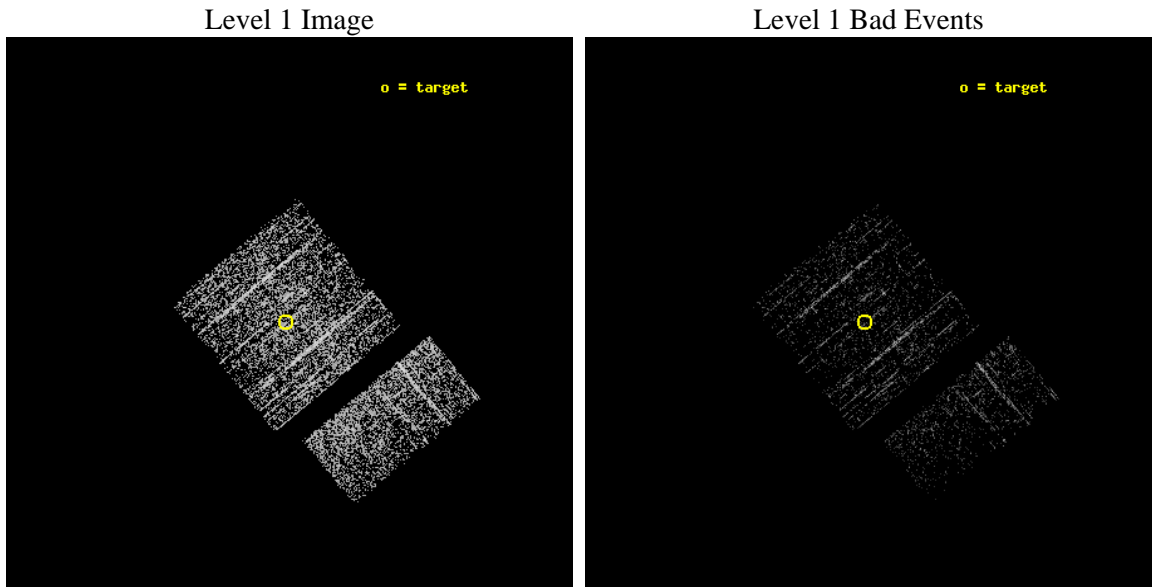
seq_num	600631	Sequence number
obs_id	8194	Observation id
title	Continued M31 Monitoring for Black Hole X-ray Nova	Proposal title
observer	Dr. Michael Garcia	Principal investigator
object	M31	Source name
dtcycle	0	
cycle	P	events are from which exps? P[rimary] S[econdar
ra_targ	10.685	Observer's specified target RA [deg]
dec_targ	41.268972	Observer's specified target Dec [deg]
ra_nom	10.674942832851	Nominal RA [deg]
dec_nom	41.27198223118	Nominal Dec [deg]
roll_nom	140.47450842384	Nominal Roll [deg]
revision	2	Processing version of data
ontime	952.75480884314	Sum of GTIs [s]
livetime	149.98658885696	Livetime [s]
ontime0	952.7547789216	Sum of GTIs [s]
ontime1	952.7547789216	Sum of GTIs [s]
ontime2	952.75479882956	Sum of GTIs [s]
ontime3	952.75480884314	Sum of GTIs [s]
ontime6	952.7547789216	Sum of GTIs [s]
ontime7	952.75480884314	Sum of GTIs [s]
l2events	2395	Number of level 2 events



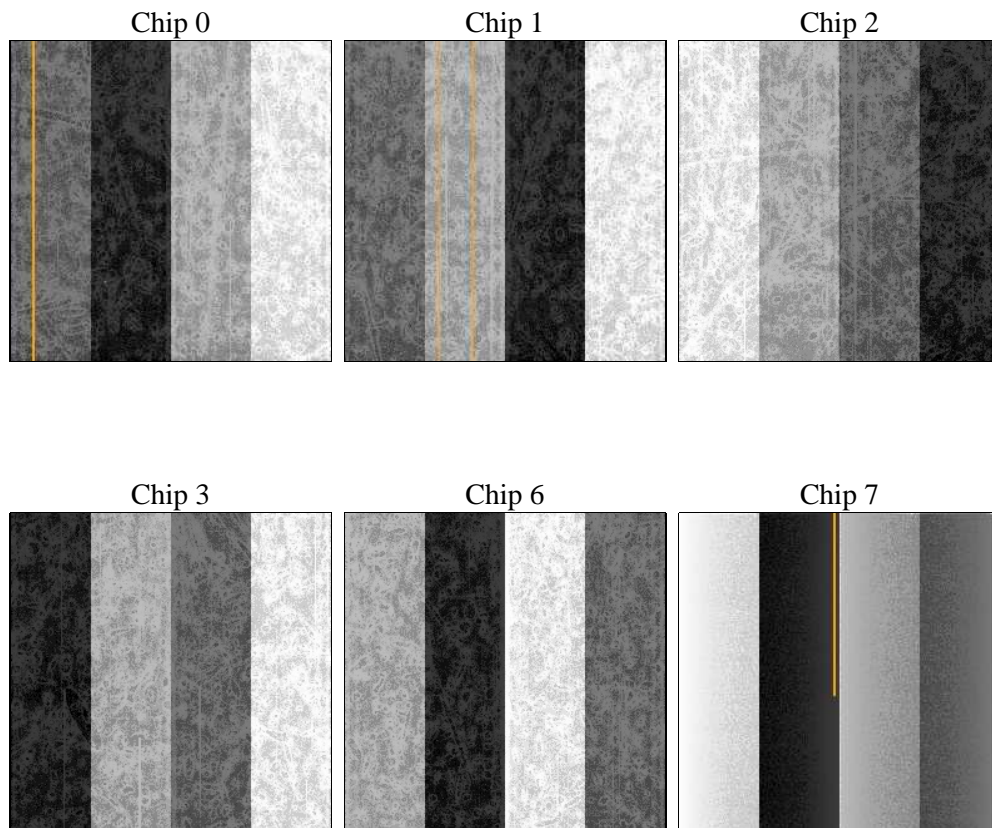
2 OBI Primary

2.1 OBI

2.1.1 Images



2.1.2 Bias



2.1.3 Parameters

obi_num	0	Obi number	sched_exp_time	5000.000000	[s] Scheduled observation exposure time
ascdsver	8.4.4	Processing system revision	ontime	952.75480884314	Sum of GTIs [s]
caldsver	4.4.9	 	ontime0	952.7547789216	Sum of GTIs [s]
date	2012-04-30T02:14:01	Date and time of file creation	ontime1	952.7547789216	Sum of GTIs [s]
revision	2	Processing version of data	ontime2	952.75479882956	Sum of GTIs [s]
			ontime3	952.75480884314	Sum of GTIs [s]
			ontime6	952.7547789216	Sum of GTIs [s]
			ontime7	952.75480884314	Sum of GTIs [s]
			l1events	22220	Number of level 1 events

2.1.4 Events

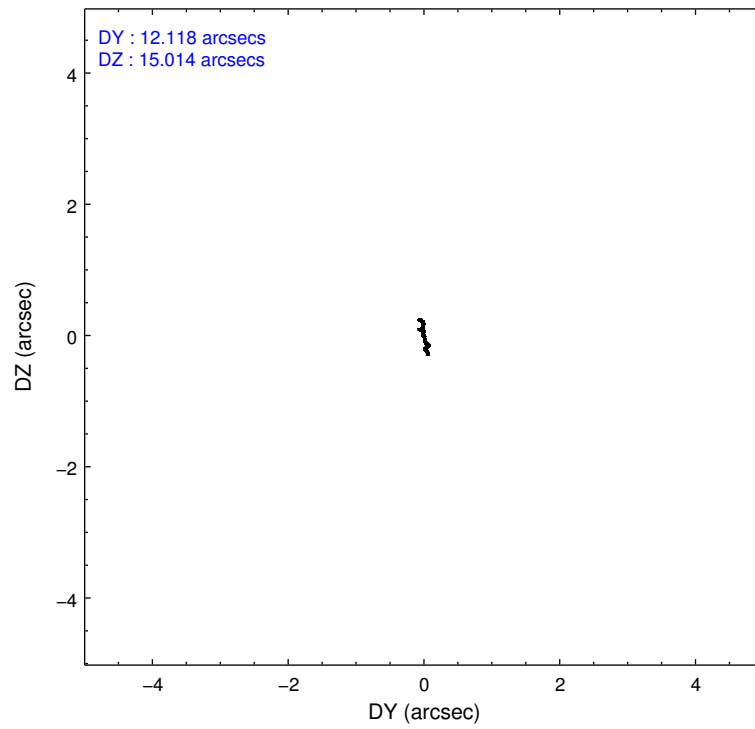
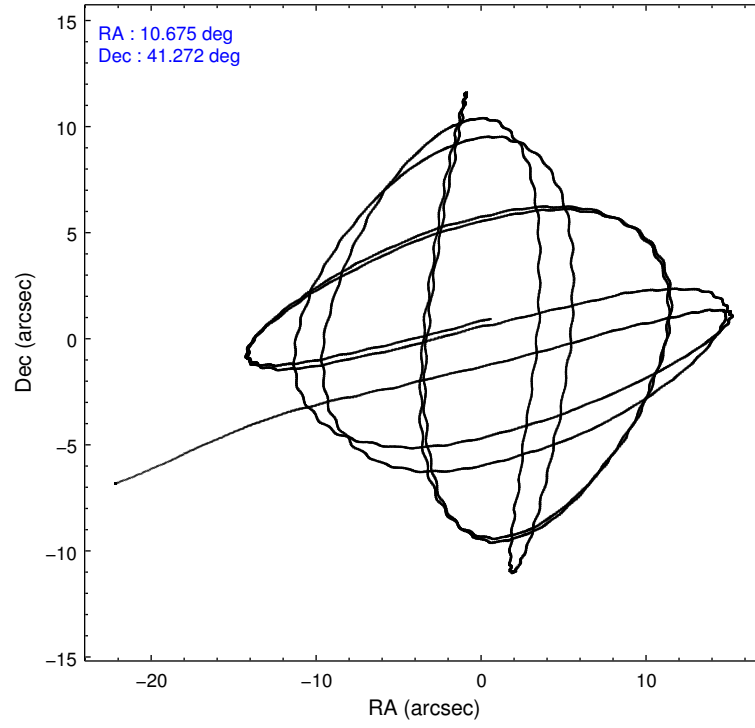
	ccd 0	ccd 1	ccd 2	ccd 3	ccd 6	ccd 7
level 1 events	3627	3525	3930	3821	4068	3249
rejected events	3328	3109	3507	3436	3778	2252
rejected %	91%	88%	89%	89%	92%	69%

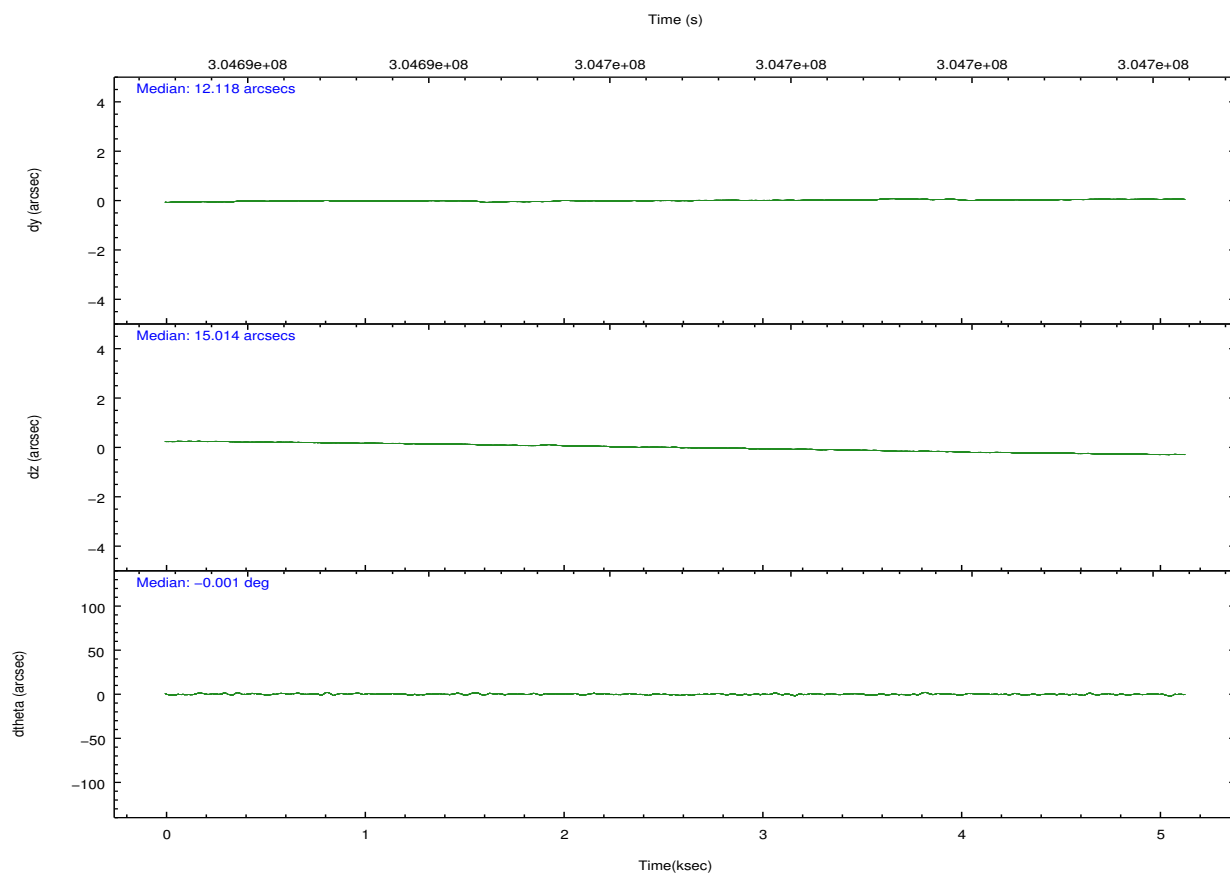
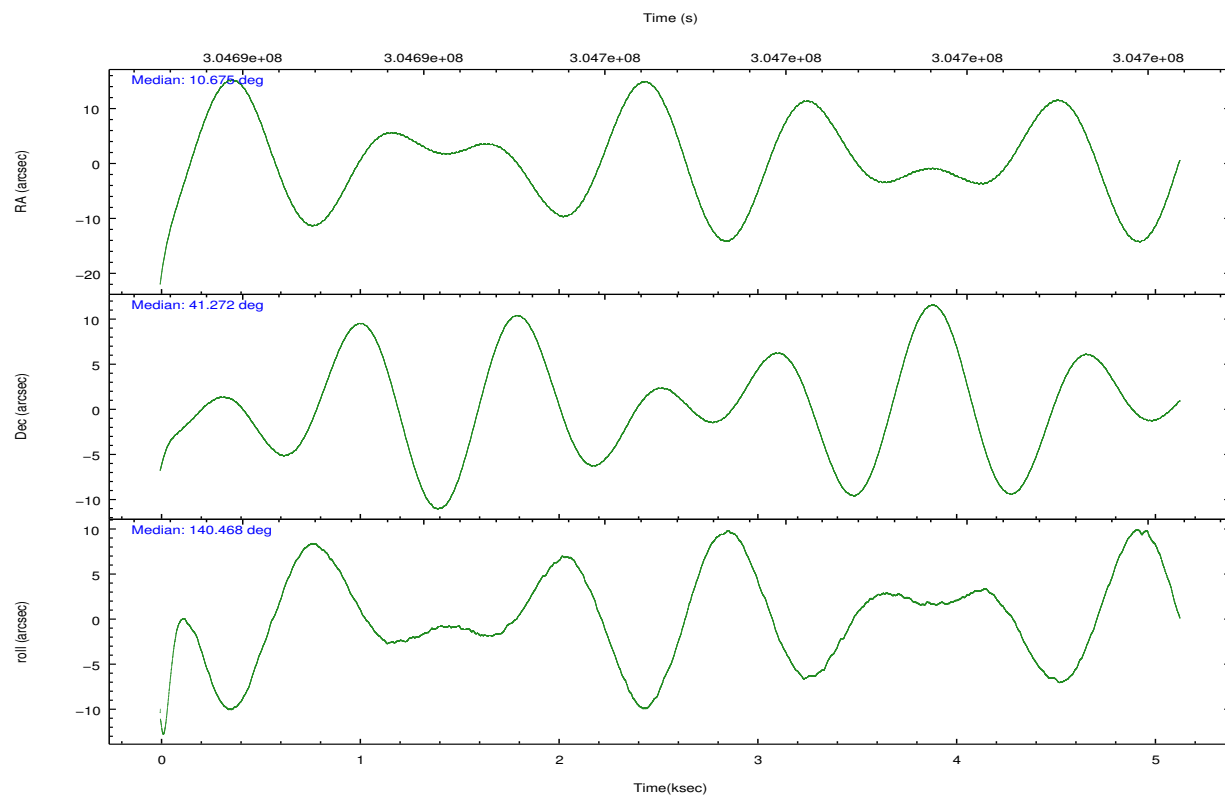
	ccd 0	ccd 1	ccd 2	ccd 3	ccd 6	ccd 7
grade 0 events	97	165	211	184	70	102
	2%	4%	5%	4%	1%	3%
grade 1 events	2	0	0	0	0	3
	0%	0%	0%	0%	0%	0%
grade 2 events	70	84	75	80	80	225
	1%	2%	1%	2%	1%	6%
grade 3 events	37	52	45	34	45	105
	1%	1%	1%	0%	1%	3%
grade 4 events	33	49	50	35	36	89
	0%	1%	1%	0%	0%	2%
grade 5 events	113	133	113	121	137	315
	3%	3%	2%	3%	3%	9%
grade 6 events	65	71	44	56	59	483
	1%	2%	1%	1%	1%	14%
grade 7 events	3210	2971	3392	3311	3641	1927
	88%	84%	86%	86%	89%	59%

2.2 Compared Parameters

Parameter	Planned	Actual	Parameter	Planned	Actual
Instrument	ACIS	ACIS	Obspar format version number	7	7
Detector	ACIS-012367	ACIS-012367	Obspar file type	PREDICTED	ACTUAL
Grating	NONE	NONE	Obspar update status	NONE	UPDATED
Data mode	VFAINT	VFAINT	Number of optional ACIS chips dropped	0	0
Observation mode	POINTING	POINTING	On-chip summing requested	N	N
[deg] Pointing RA	10.711149	10.67494283285089	Subarray requested	NONE	NONE
[deg] Pointing Dec	41.267592	41.27198223117961	Alternating exposures requested	Y	Y
[deg] Pointing Roll	140.241985	140.4745084238418	[s] Primary exposure time	0.600000	0.6
[mm] SIM focus pos	-0.782348	-0.7809083437167272	[s] Secondary exposure time	0.000000	3.2
[mm] SIM defocus	0	0.001439871863259334	Duty cycle	5	5
[mm] SIM translation stage pos	-233.592463	-233.5874344608287			
[mm] SIM translation stage offset	0	-0.005018542100998502			
[s] Observation start time (MET)	304692924.184000	304691875.30486			
Observation start date	2007-08-28T12:54:19	2007-08-28T12:37:55			
[s] Observation end time (MET)	304697924.184000	304698645.94269			
Observation end date	2007-08-28T14:17:39	2007-08-28T14:30:45			
Read mode	TIMED	TIMED			

2.3 Aspect



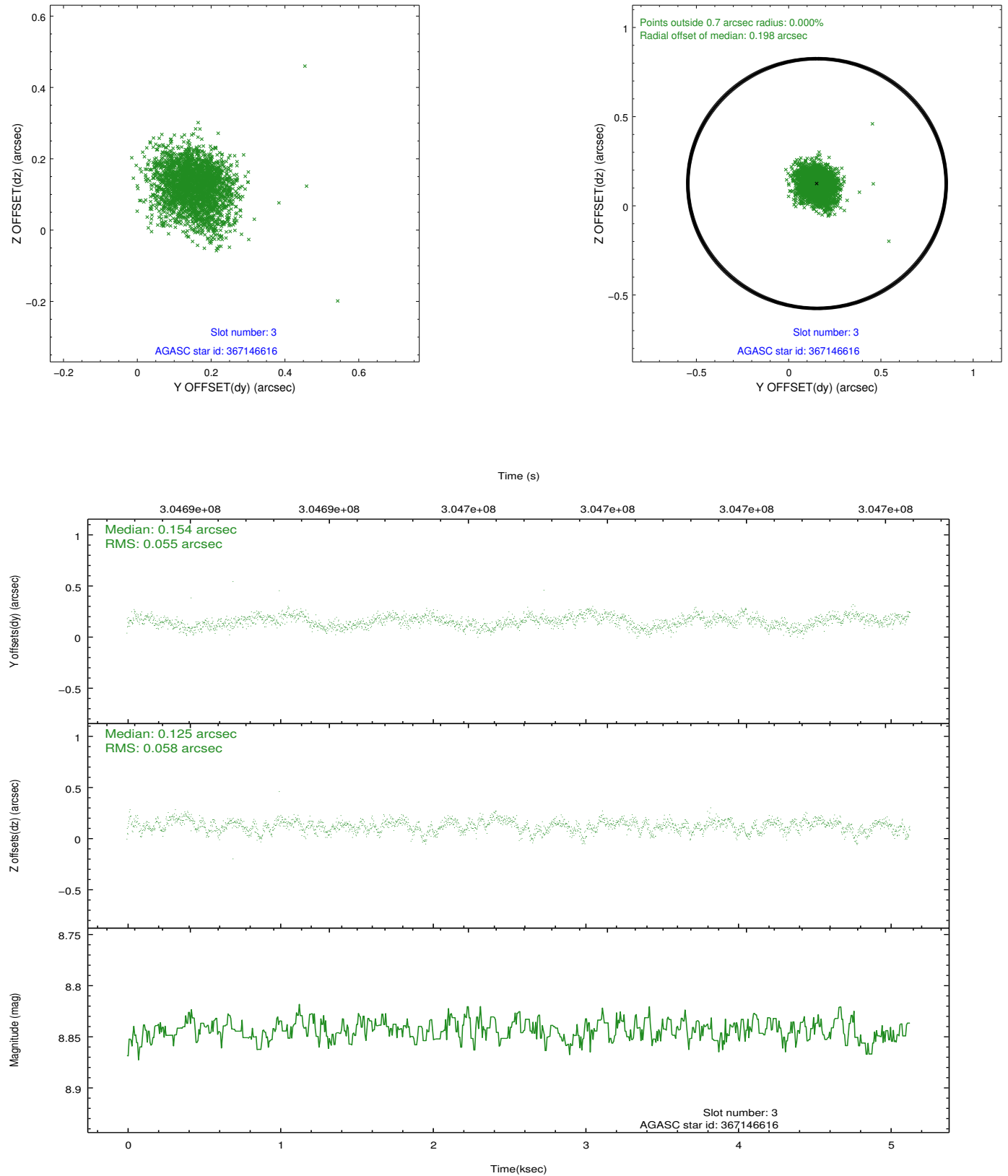


Slot Statistics

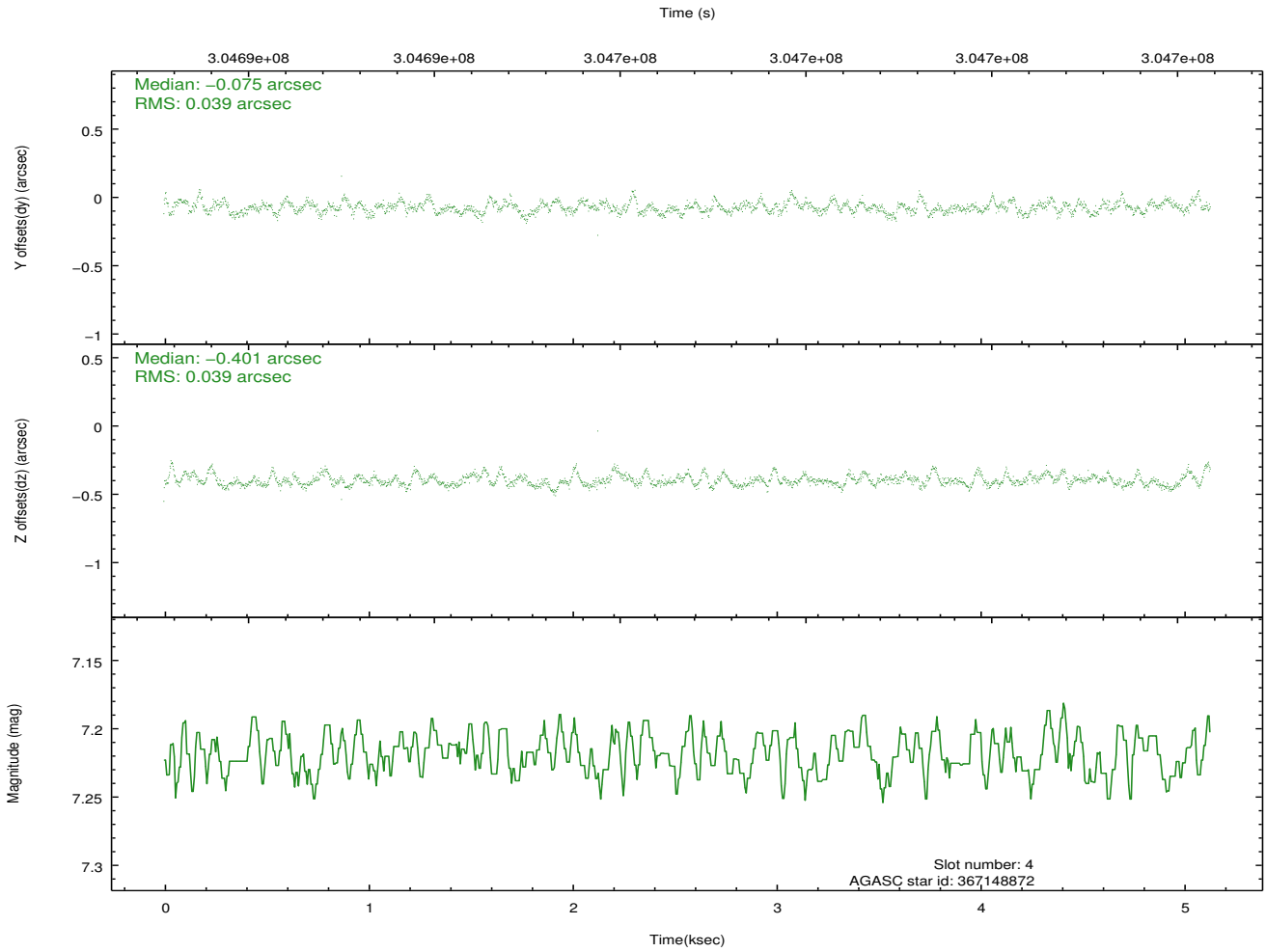
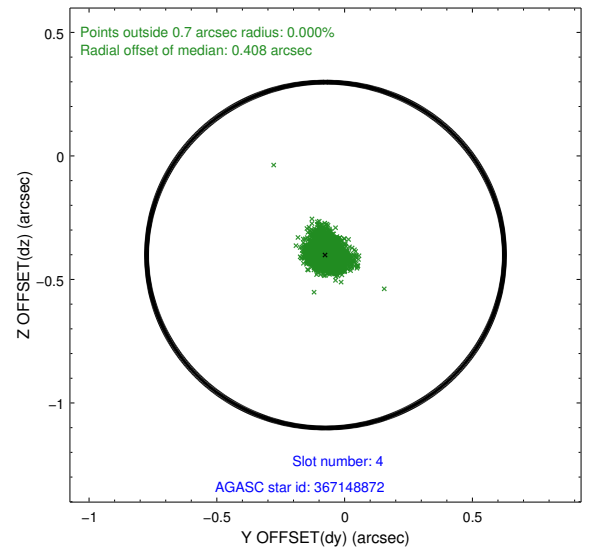
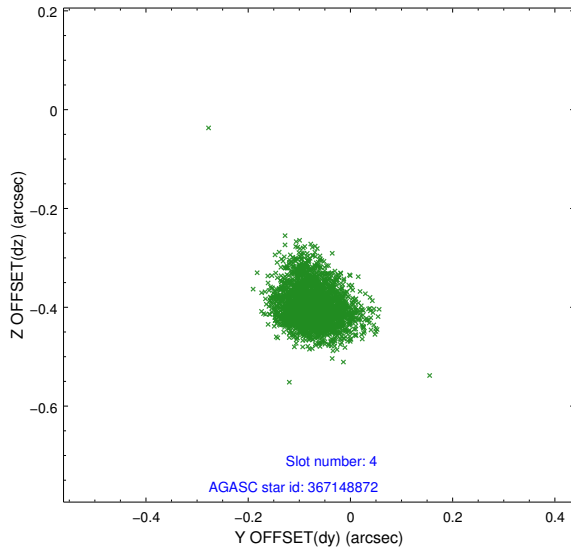
slot	status	id	mag	n_pts	med_dy	med_dz	dr1	dr2	ra	dec	mean_y	mean_z
0	FID	ACIS-I-4	7.16	1252	0.158	0.006	0.008	0.015	0.000000	0.000000	2147.55	1061.26
1	FID	ACIS-I-5	7.23	1252	-0.260	0.005	0.007	0.012	0.000000	0.000000	-1819.31	1059.83
2	FID	ACIS-I-6	7.23	1252	0.002	0.056	0.008	0.015	0.000000	0.000000	391.70	1704.19
3	GUIDE	367146616	8.84	2503	0.154	0.125	0.084	0.137	11.418645	41.190163	-1646.33	-1017.57
4	GUIDE	367148872	7.22	2504	-0.075	-0.401	0.058	0.096	10.505940	40.688258	-903.83	1960.62
5	GUIDE	367657272	8.43	2504	0.006	0.198	0.075	0.116	11.834471	41.298907	-2250.91	-2044.07
6	GUIDE	367657896	9.01	2500	0.118	0.007	0.082	0.135	11.197765	41.313576	-903.84	-972.52
7	GUIDE	367663272	9.26	2500	-0.203	0.076	0.107	0.175	10.656279	41.699429	1107.64	-1100.40

2.4 Star Slots

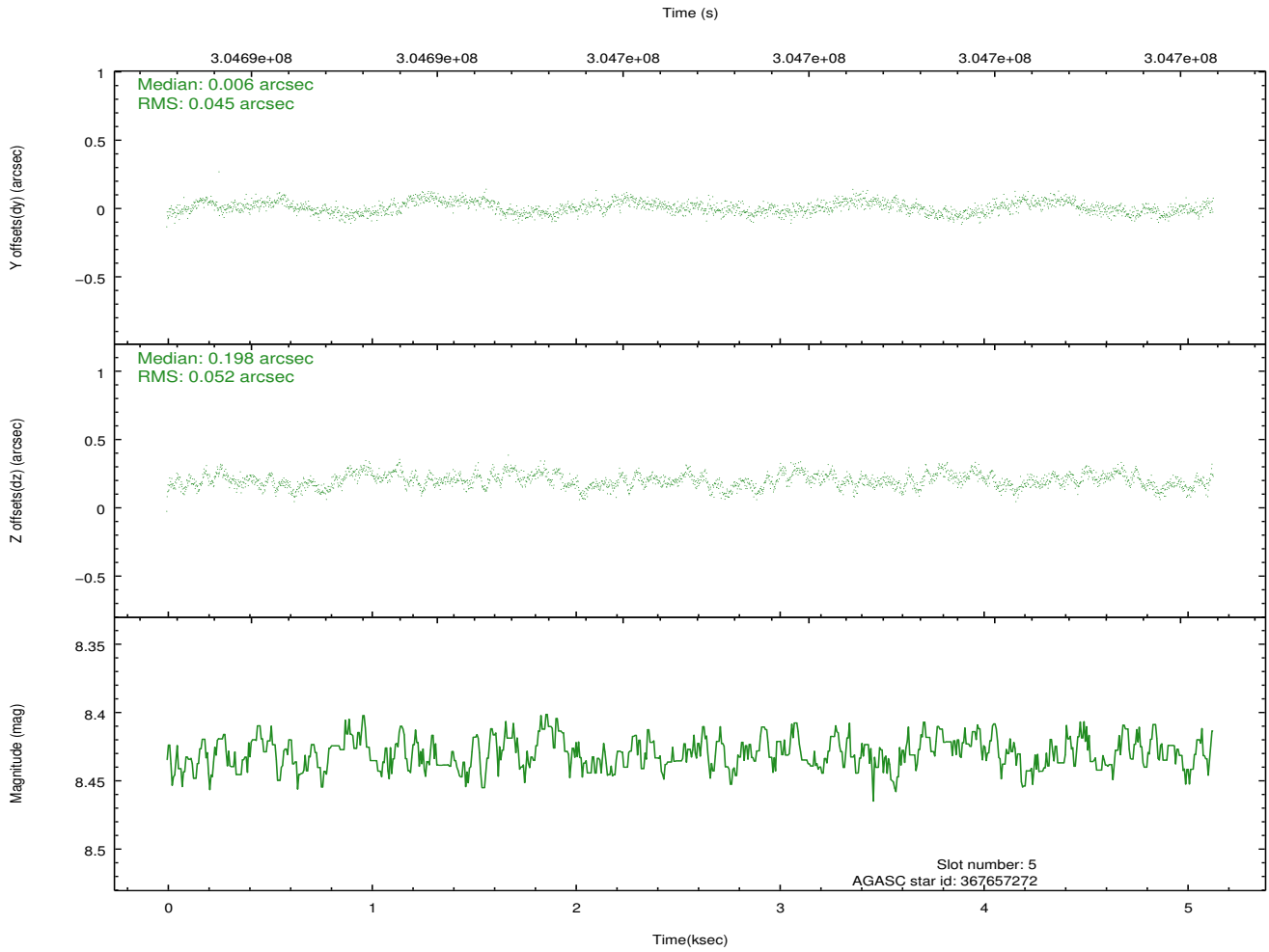
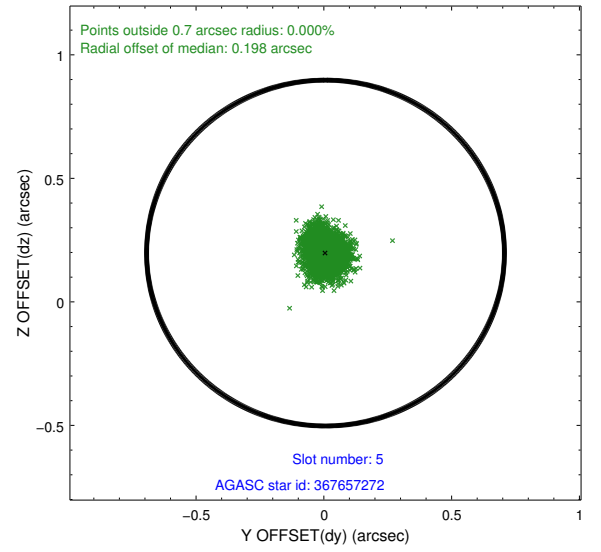
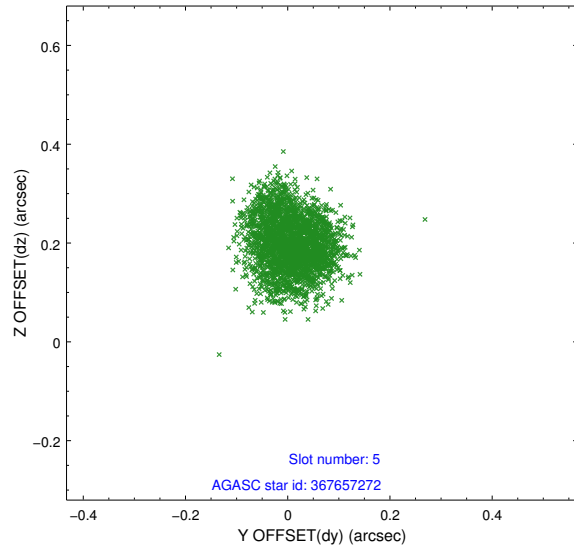
2.4.1 Slot 3



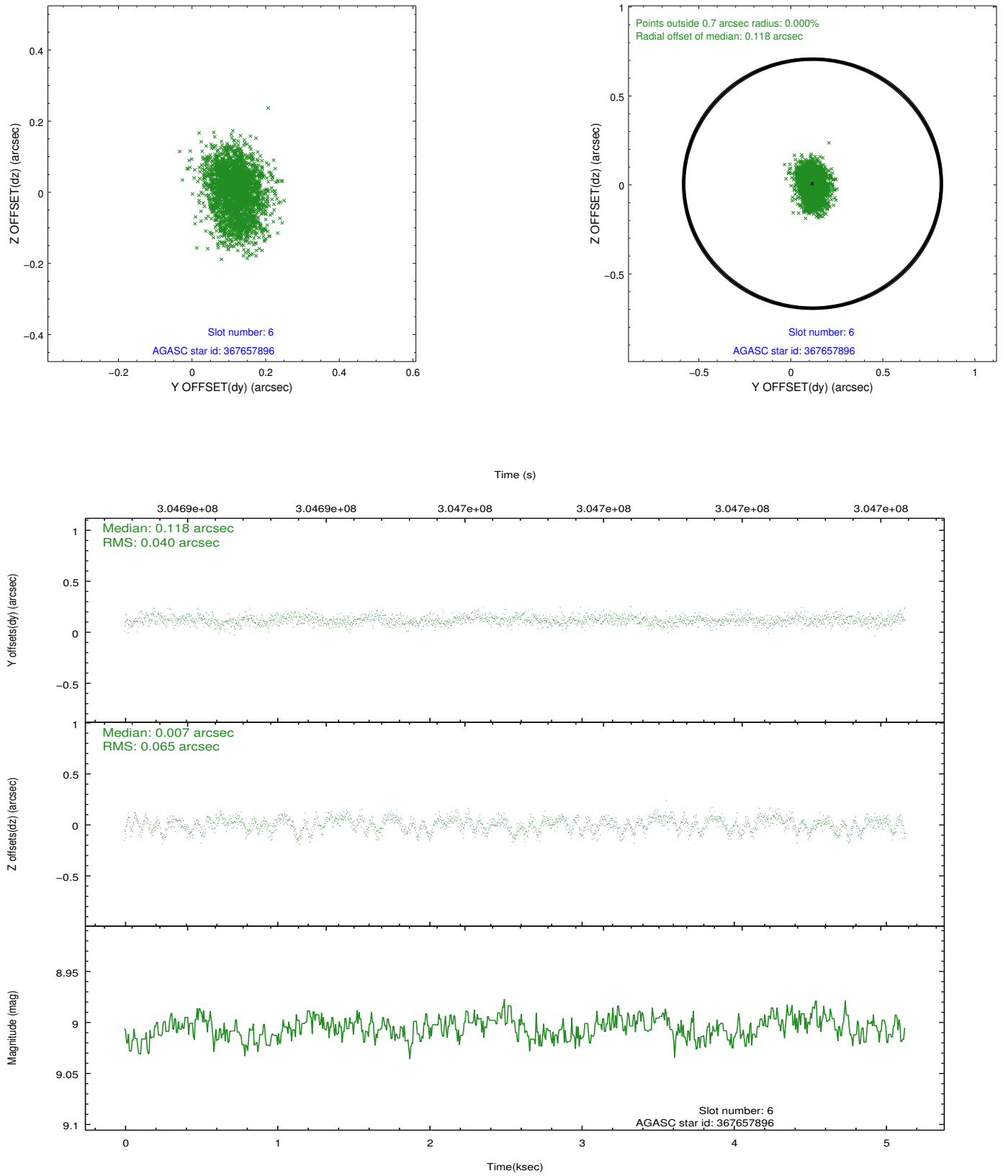
2.4.2 Slot 4



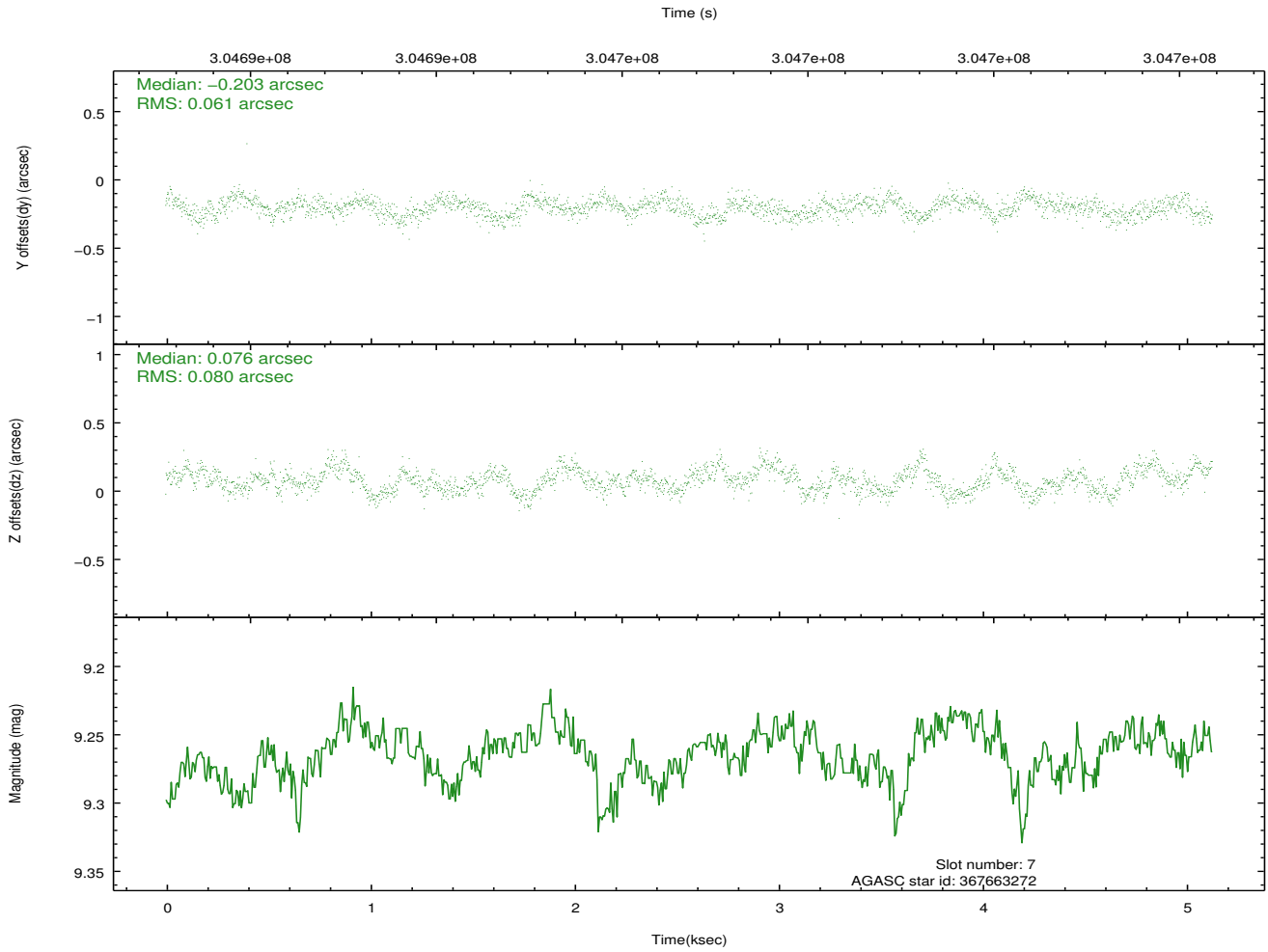
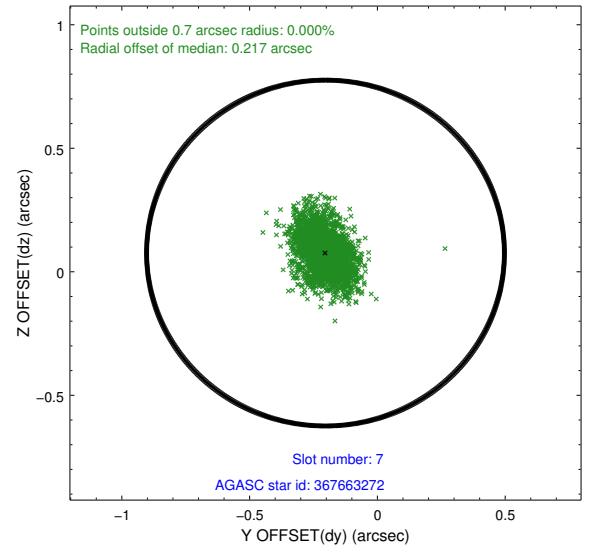
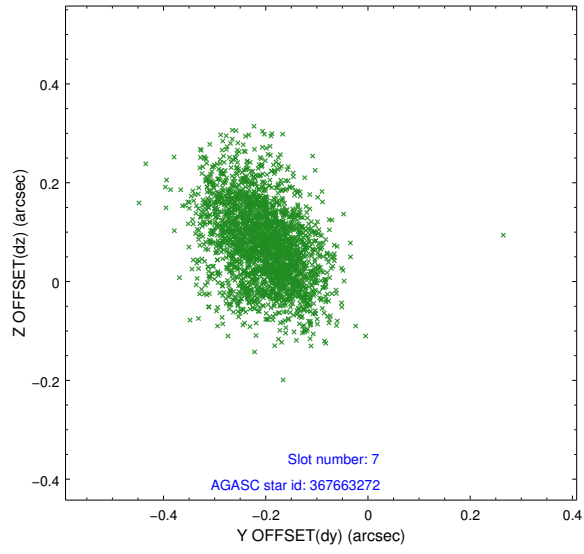
2.4.3 Slot 5



2.4.4 Slot 6

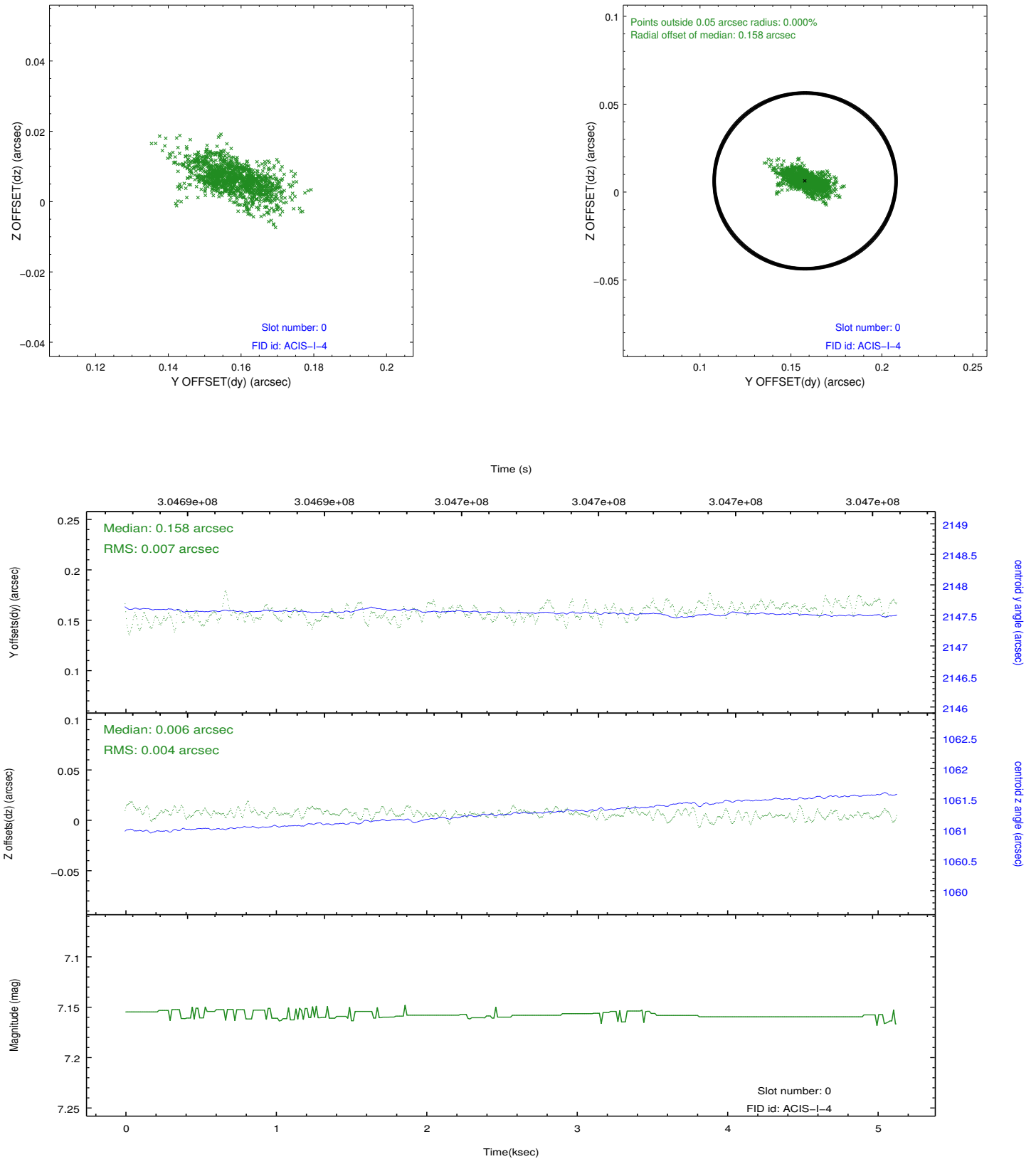


2.4.5 Slot 7

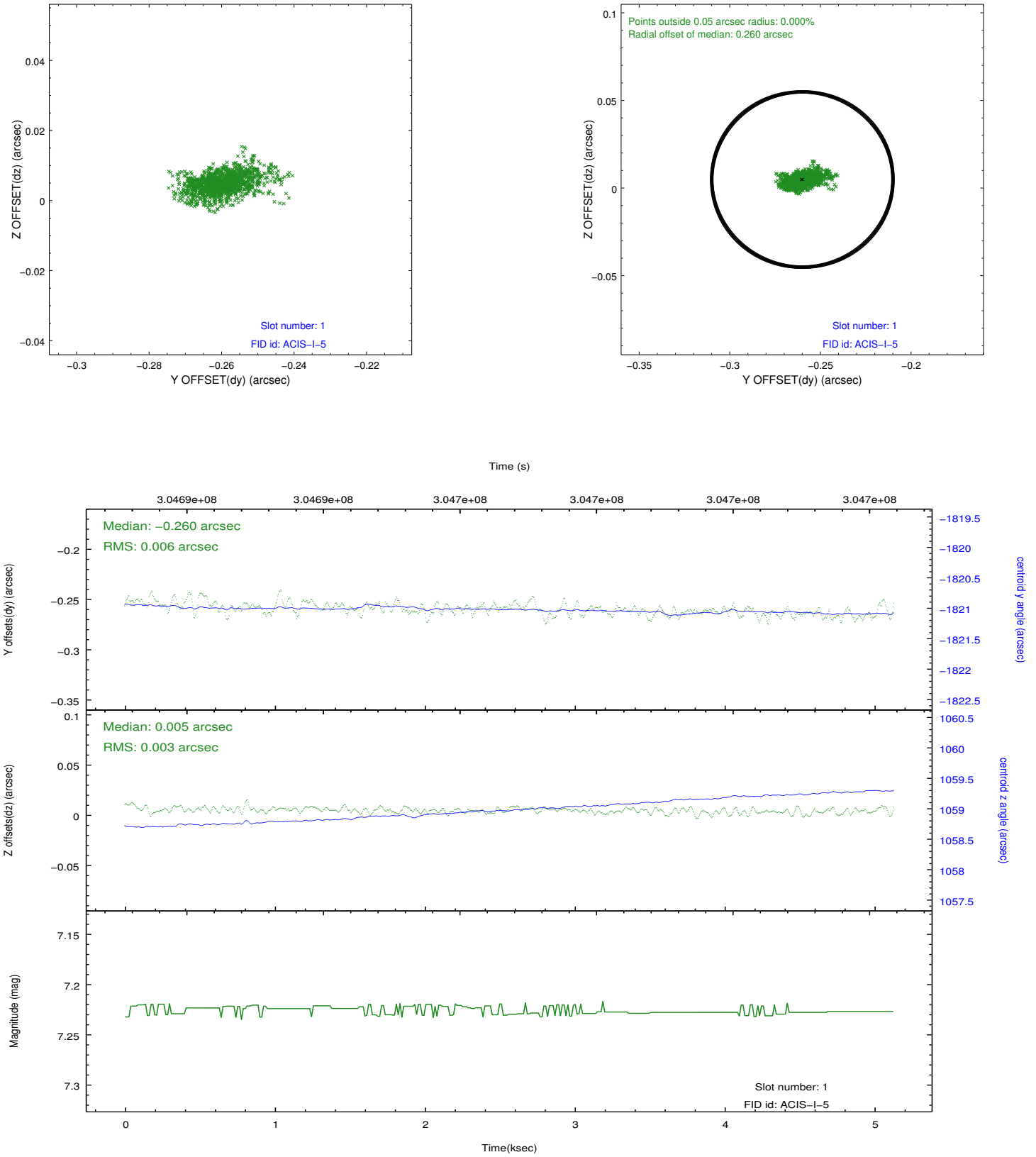


2.5 FID Slots

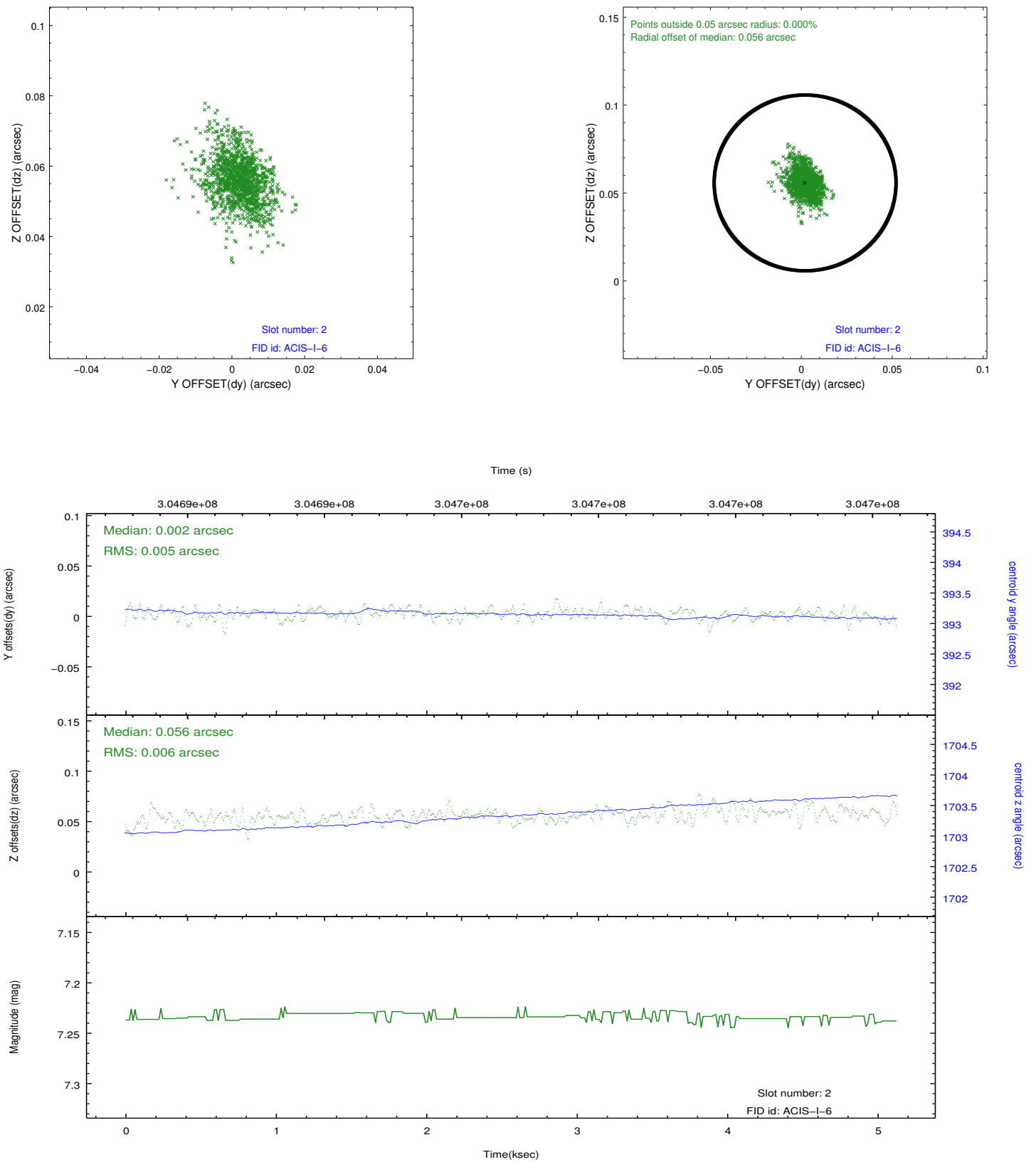
2.5.1 Slot 0



2.5.2 Slot 1



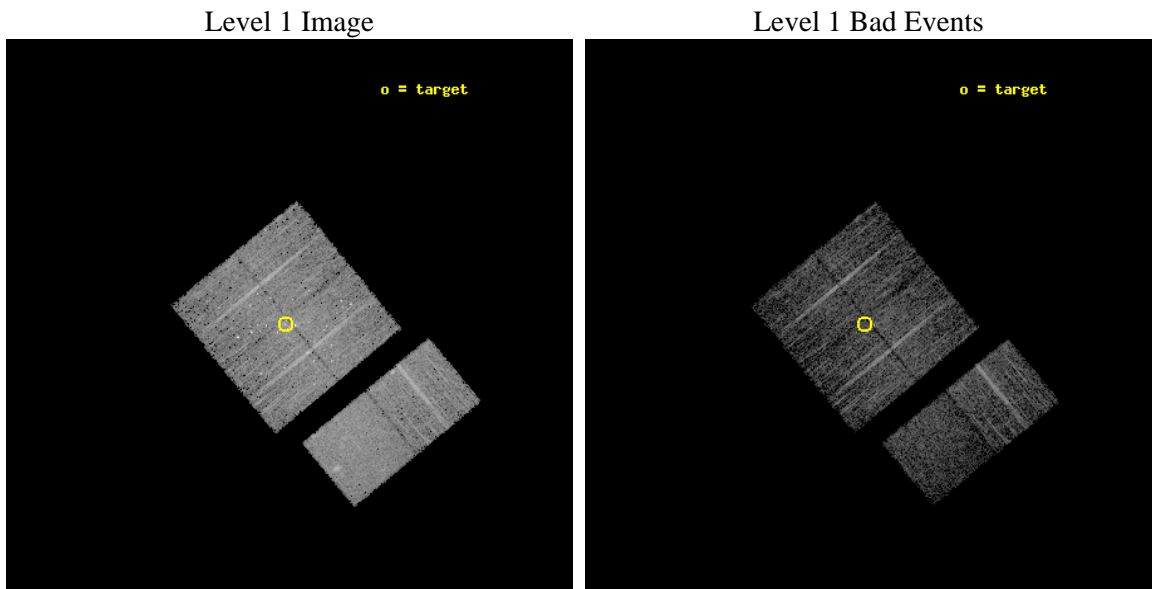
2.5.3 Slot 2



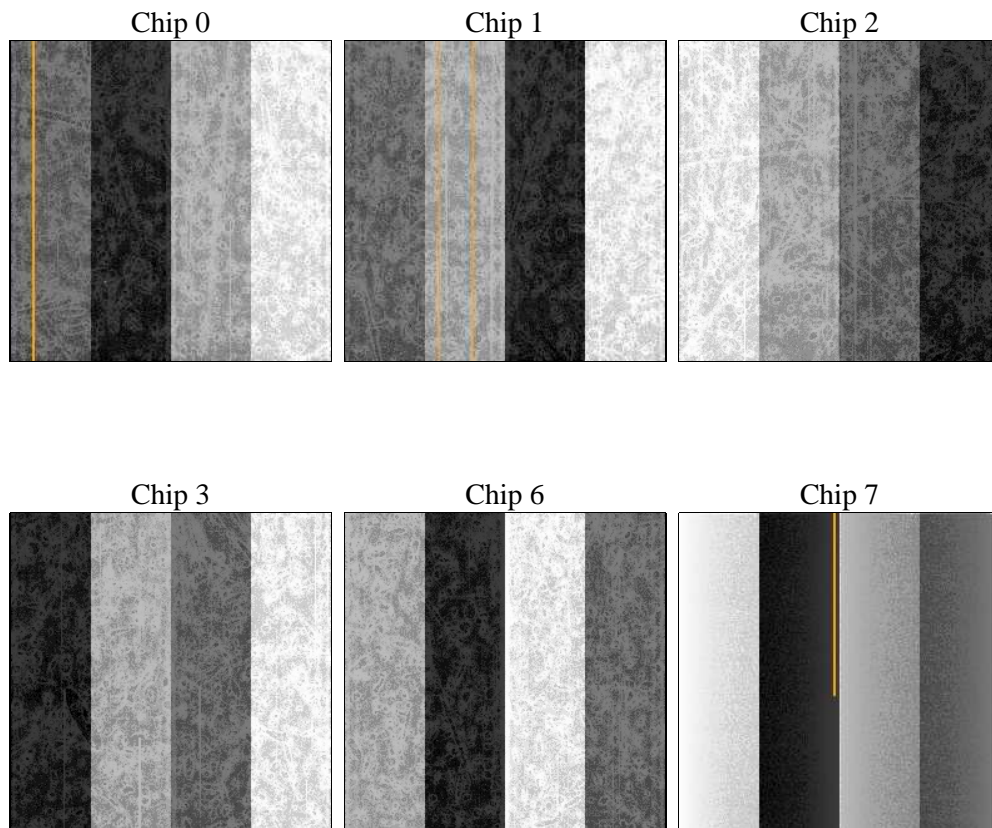
3 OBI Secondary

3.1 OBI

3.1.1 Images



3.1.2 Bias



3.1.3 Parameters

obi_num	0	Obi number	sched_exp_time	5000.000000	[s] Scheduled observation exposure time
ascdsver	8.4.4	Processing system revision	ontime	4084.357062161	Sum of GTIs [s]
caldsver	4.4.9	 	ontime0	4084.3571609259	Sum of GTIs [s]
date	2012-04-30T02:15:11	Date and time of file creation	ontime1	4084.3570725918	Sum of GTIs [s]
revision	2	Processing version of data	ontime2	4084.357111752	Sum of GTIs [s]
			ontime3	4084.357062161	Sum of GTIs [s]
			ontime6	4084.356813252	Sum of GTIs [s]
			ontime7	4084.3566632867	Sum of GTIs [s]
			l1events	203390	Number of level 1 events

3.1.4 Events

	ccd 0	ccd 1	ccd 2	ccd 3	ccd 6	ccd 7		ccd 0	ccd 1	ccd 2	ccd 3	ccd 6	ccd 7
level 1 events	30545	31043	36688	34929	33288	36897	grade 0 events	1931	3715	3768	3913	1422	1839
rejected events	26388	24616	30083	28467	29658	19448		6%	11%	10%	11%	4%	4%
rejected %	86%	79%	81%	81%	89%	52%	grade 1 events	18	42	134	56	14	46
								0%	0%	0%	0%	0%	0%
							grade 2 events	829	1064	1175	1056	788	3632
								2%	3%	3%	3%	2%	9%
							grade 3 events	399	468	471	415	376	1699
								1%	1%	1%	1%	1%	4%
							grade 4 events	381	442	467	427	358	1653
								1%	1%	1%	1%	1%	4%
							grade 5 events	1122	1259	1127	1266	1247	3730
								3%	4%	3%	3%	3%	10%
							grade 6 events	623	739	730	655	691	8642
								2%	2%	1%	1%	2%	23%
							grade 7 events	25242	23314	28816	27141	28392	15656
								82%	75%	78%	77%	85%	42%

A Summary

A.1 Status

V&V Scientist	Jen Lauer
V&V Date (YYYY-MM-DD)	2012.05.02
V&V Edition	1
V&V Disposition and Status	OK
V&V Charge Time	5.03711187

A.2 Comments

Coordinated with HST.