

V&V Reference Report

L2 ASCDS Version : 8.4.3.1

Observation 7894 - L2 Version 3
Chandra X-Ray Center

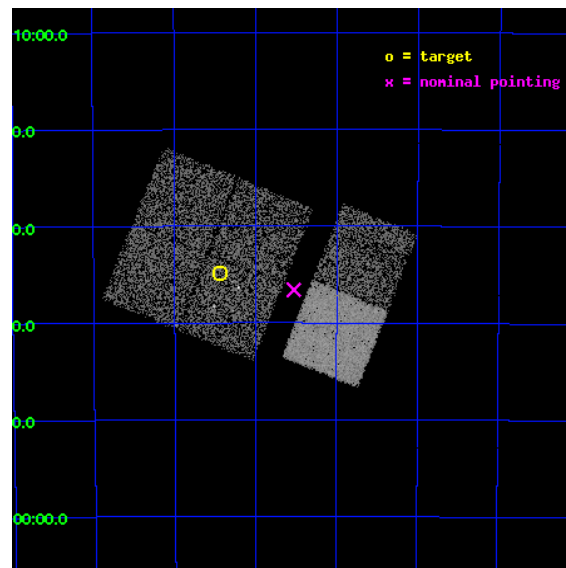
L2 Processing Date : Apr 16 2012

Contents

1	Front	2
2	OBI	3
2.1	OBI	3
2.1.1	Images	3
2.1.2	Bias	3
2.1.3	Parameters	4
2.1.4	Events	4
2.2	Compared Parameters	5
2.3	Aspect	6
2.4	Star Slots	9
2.4.1	Slot 3	9
2.4.2	Slot 4	10
2.4.3	Slot 5	11
2.4.4	Slot 6	12
2.4.5	Slot 7	13
2.5	FID Slots	14
2.5.1	Slot 0	14
2.5.2	Slot 1	15
2.5.3	Slot 2	16
A	Summary	17
A.1	Status	17
A.2	Comments	17

1 Front

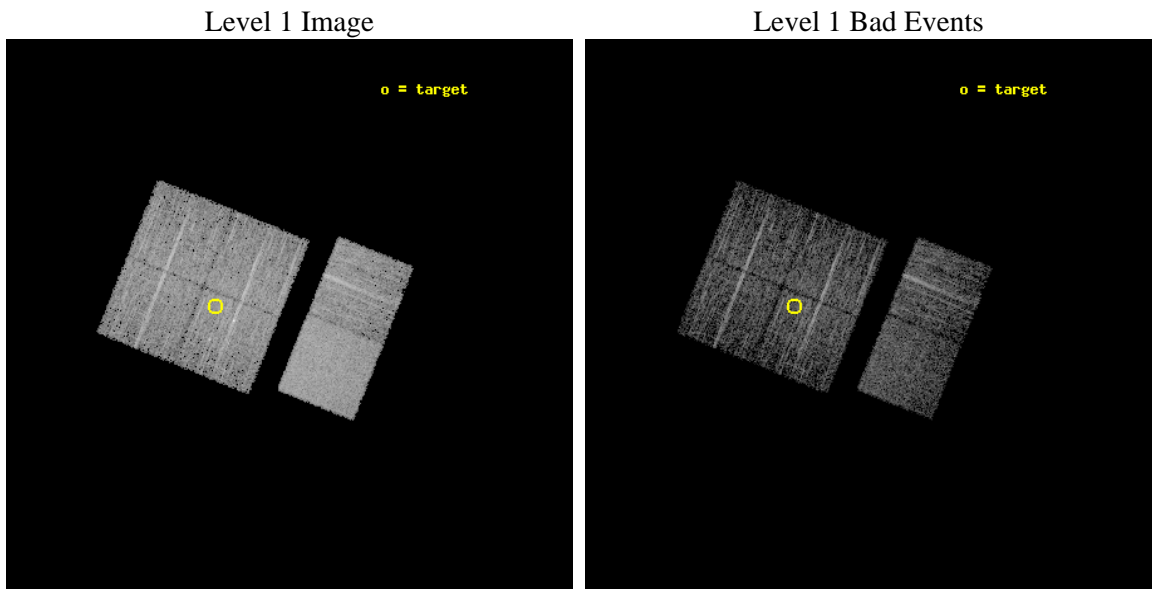
seq_num	701557	Sequence number
obs_id	7894	Observation id
title	Search for strongly obscured AGN: support for INTEGRAL all-sky hard X-ray survey	Proposal title
observer	Dr. Stephen Murray	Principal investigator
object	IGR J14493-5534	Source name
dtcycle	0	
cycle	P	events from which exps? Prim/Second/Both
ra_targ	222.362083	Observer's specified target RA [deg]
dec_targ	-55.58	Observer's specified target Dec [deg]
ra_nom	222.13218607909	Nominal RA [deg]
dec_nom	-55.609915541701	Nominal Dec [deg]
roll_nom	111.93970537089	Nominal Roll [deg]
revision	3	Processing version of data
ontime	3619.199986577	Sum of GTIs [s]
livetime	3573.3714971264	Livetime [s]
ontime0	3619.199986577	Sum of GTIs [s]
ontime1	3619.199986577	Sum of GTIs [s]
ontime2	3619.199986577	Sum of GTIs [s]
ontime3	3619.199986577	Sum of GTIs [s]
ontime6	3619.199986577	Sum of GTIs [s]
ontime7	3619.199986577	Sum of GTIs [s]
l2events	35657	Number of level 2 events



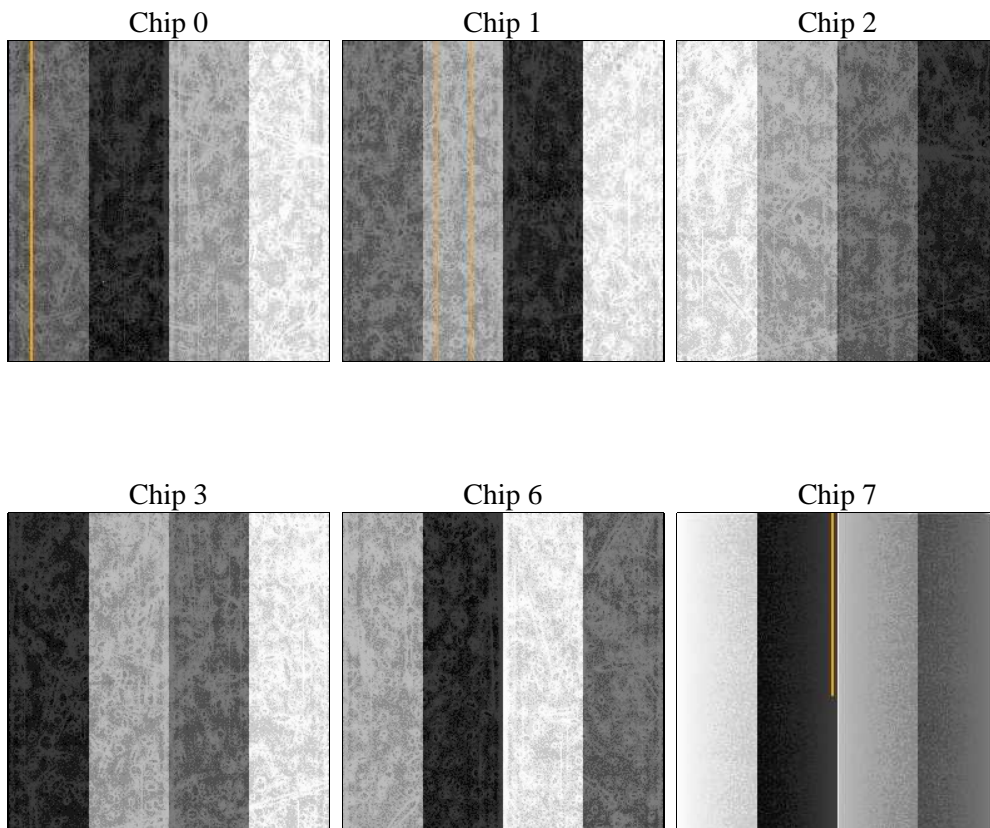
2 OBI

2.1 OBI

2.1.1 Images



2.1.2 Bias



2.1.3 Parameters

obi_num	0	Obi number	sched_exp_time	3500.000000	[s] Scheduled observation exposure time
ascdsver	8.4.3.1	Processing system revision	ontime	3619.199986577	Sum of GTIs [s]
caldsver	4.4.9	 	ontime0	3619.199986577	Sum of GTIs [s]
date	2012-04-16T03:39:12	Date and time of file creation	ontime1	3619.199986577	Sum of GTIs [s]
revision	3	Processing version of data	ontime2	3619.199986577	Sum of GTIs [s]
			ontime3	3619.199986577	Sum of GTIs [s]
			ontime6	3619.199986577	Sum of GTIs [s]
			ontime7	3619.199986577	Sum of GTIs [s]
			l1events	255367	Number of level 1 events

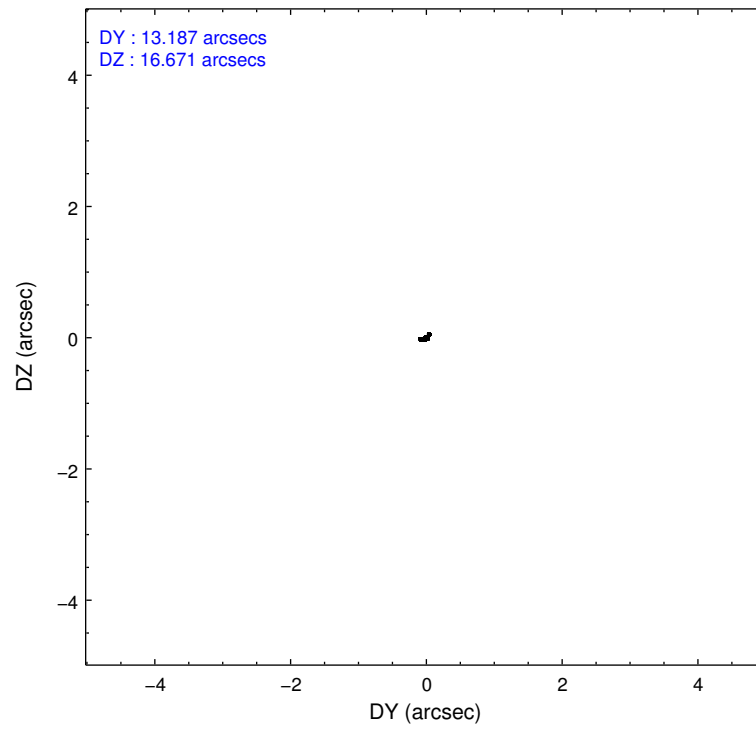
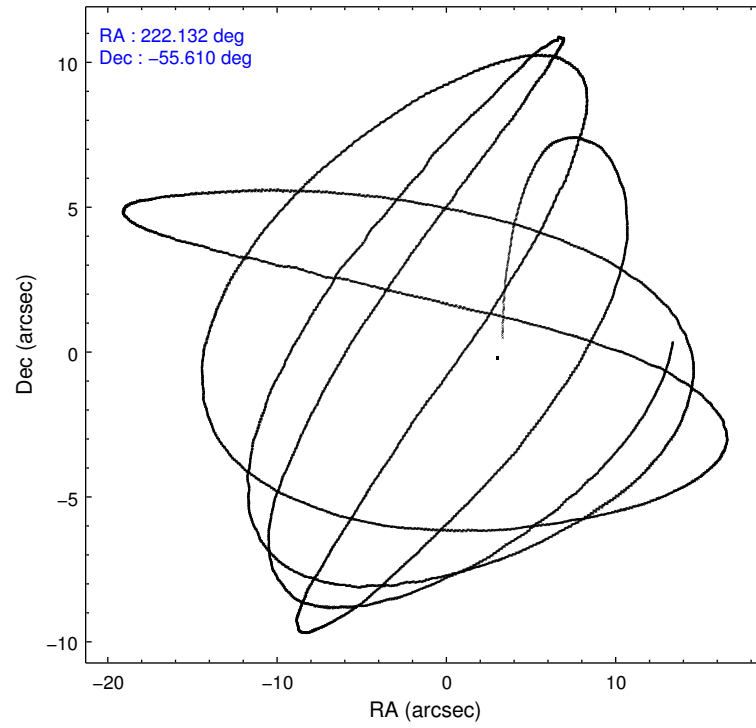
2.1.4 Events

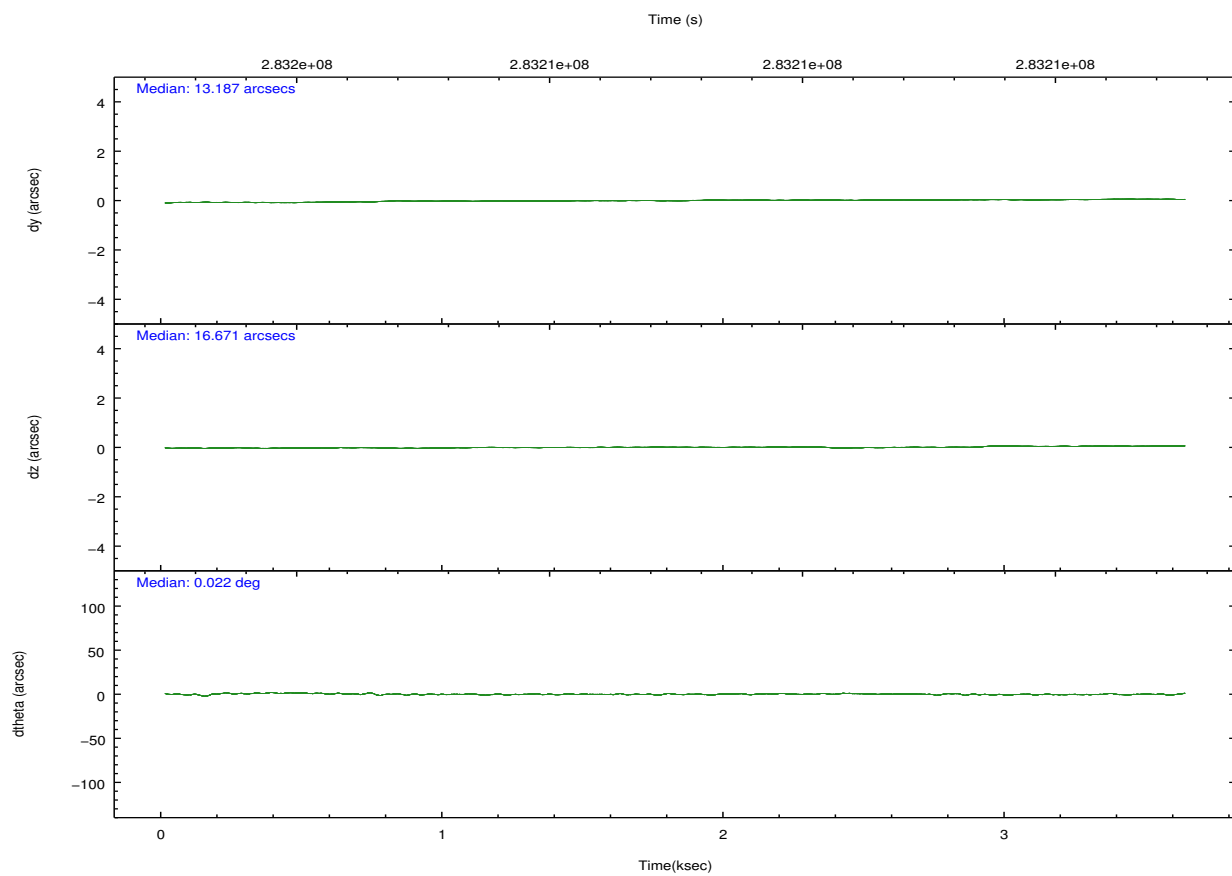
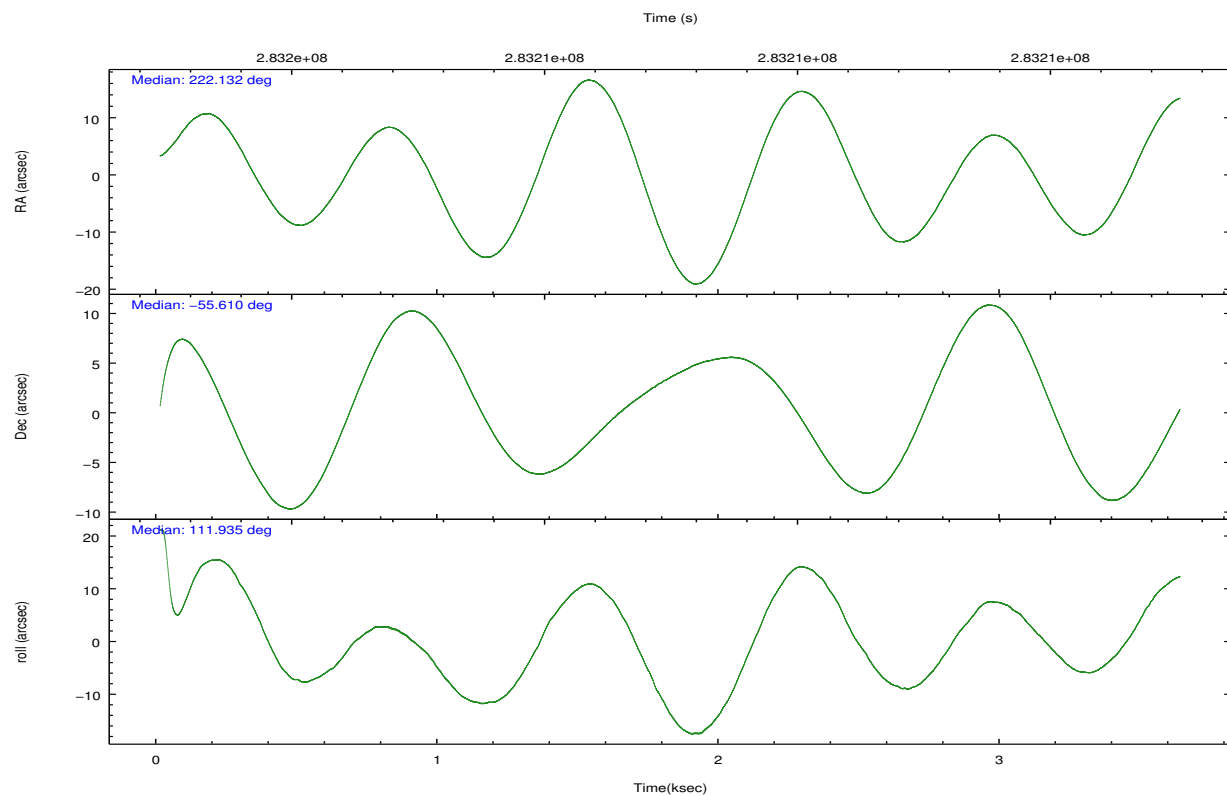
	ccd 0	ccd 1	ccd 2	ccd 3	ccd 6	ccd 7		ccd 0	ccd 1	ccd 2	ccd 3	ccd 6	ccd 7
level 1 events	38608	36968	43127	39944	40518	56202	grade 0 events	2143	2161	2237	2575	1998	2090
rejected events	34739	32865	39186	35578	36688	37615		5%	5%	5%	6%	4%	3%
rejected %	89%	88%	90%	89%	90%	66%	grade 1 events	30	18	20	34	18	63
								0%	0%	0%	0%	0%	0%
							grade 2 events	1040	1153	1058	994	1072	4838
								2%	3%	2%	2%	2%	8%
							grade 3 events	457	495	434	480	462	2045
								1%	1%	1%	1%	1%	3%
							grade 4 events	427	482	438	510	451	2094
								1%	1%	1%	1%	1%	3%
							grade 5 events	1656	1656	1616	1900	1824	5266
								4%	4%	3%	4%	4%	9%
							grade 6 events	925	1024	794	890	963	12773
								2%	2%	1%	2%	2%	22%
							grade 7 events	31930	29979	36530	32561	33730	27033
								82%	81%	84%	81%	83%	48%

2.2 Compared Parameters

Parameter	Planned	Actual	Parameter	Planned	Actual
Instrument	ACIS	ACIS	Obspar format version number	7	7
Detector	ACIS-012367	ACIS-012367	Obspar file type	PREDICTED	ACTUAL
Grating	NONE	NONE	Obspar update status	NONE	UPDATED
Data mode	FAINT	FAINT	Number of optional ACIS chips dropped	0	0
Observation mode	POINTING	POINTING	On-chip summing requested	N	N
[deg] Pointing RA	222.170576	222.1321860790947	Subarray requested	NONE	NONE
[deg] Pointing Dec	-55.626341	-55.60991554170052	Alternating exposures requested	N	N
[deg] Pointing Roll	111.814699	111.9397053708852	[s] Primary exposure time	0.000000	3.2
[mm] SIM focus pos	-0.684267	-0.6828225247311905			
[mm] SIM defocus	0	0.09952569084879603			
[mm] SIM translation stage pos	-207.132523	-207.1368374884175			
[mm] SIM translation stage offset	17	-26.4556155145122			
[s] Observation start time (MET)	283204815.184000	283203105.98001			
Observation start date	2006-12-22T19:59:10	2006-12-22T19:31:45			
[s] Observation end time (MET)	283208315.184000	283209069.43029			
Observation end date	2006-12-22T20:57:30	2006-12-22T21:11:09			
Read mode	TIMED	TIMED			

2.3 Aspect



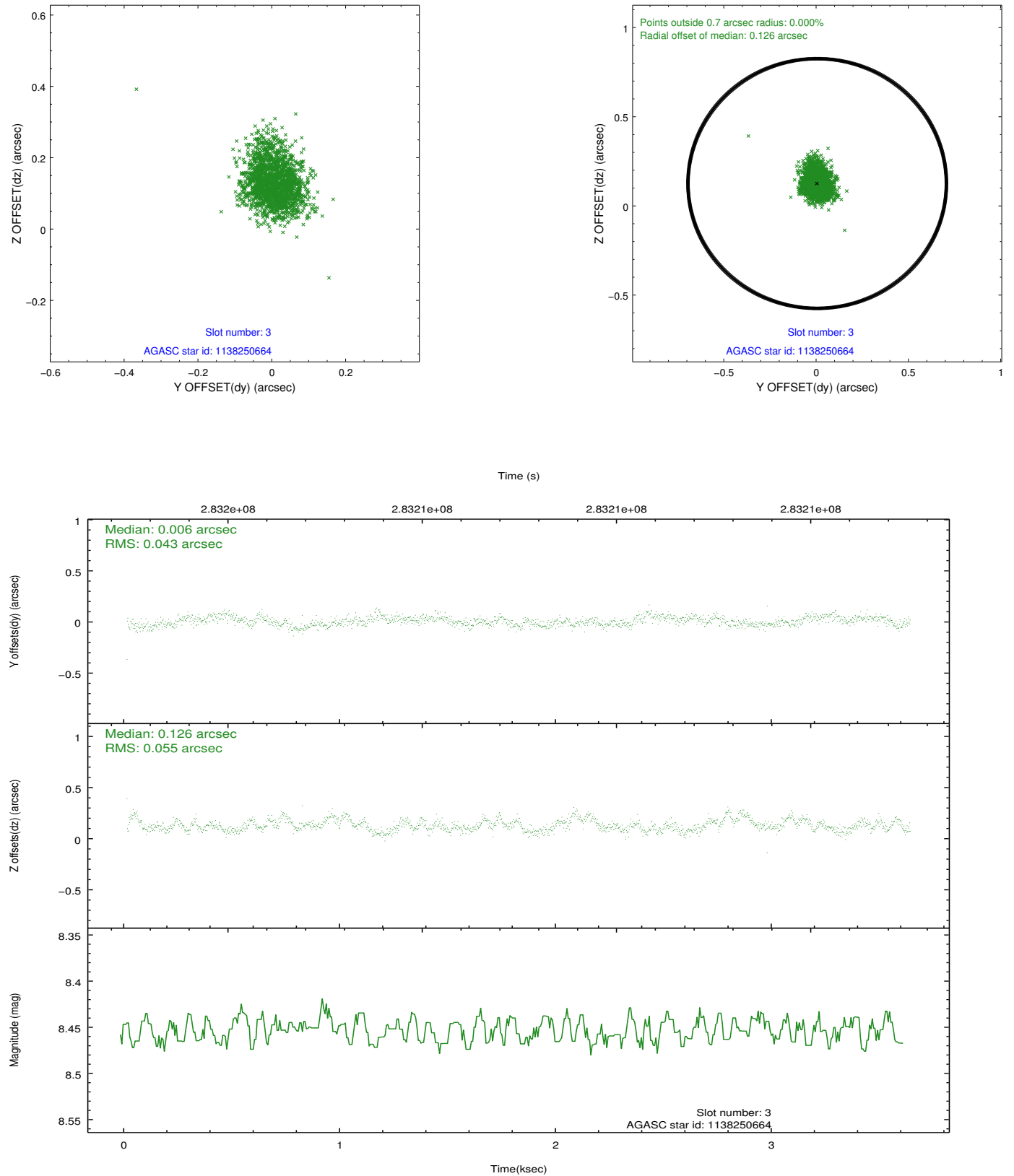


Slot Statistics

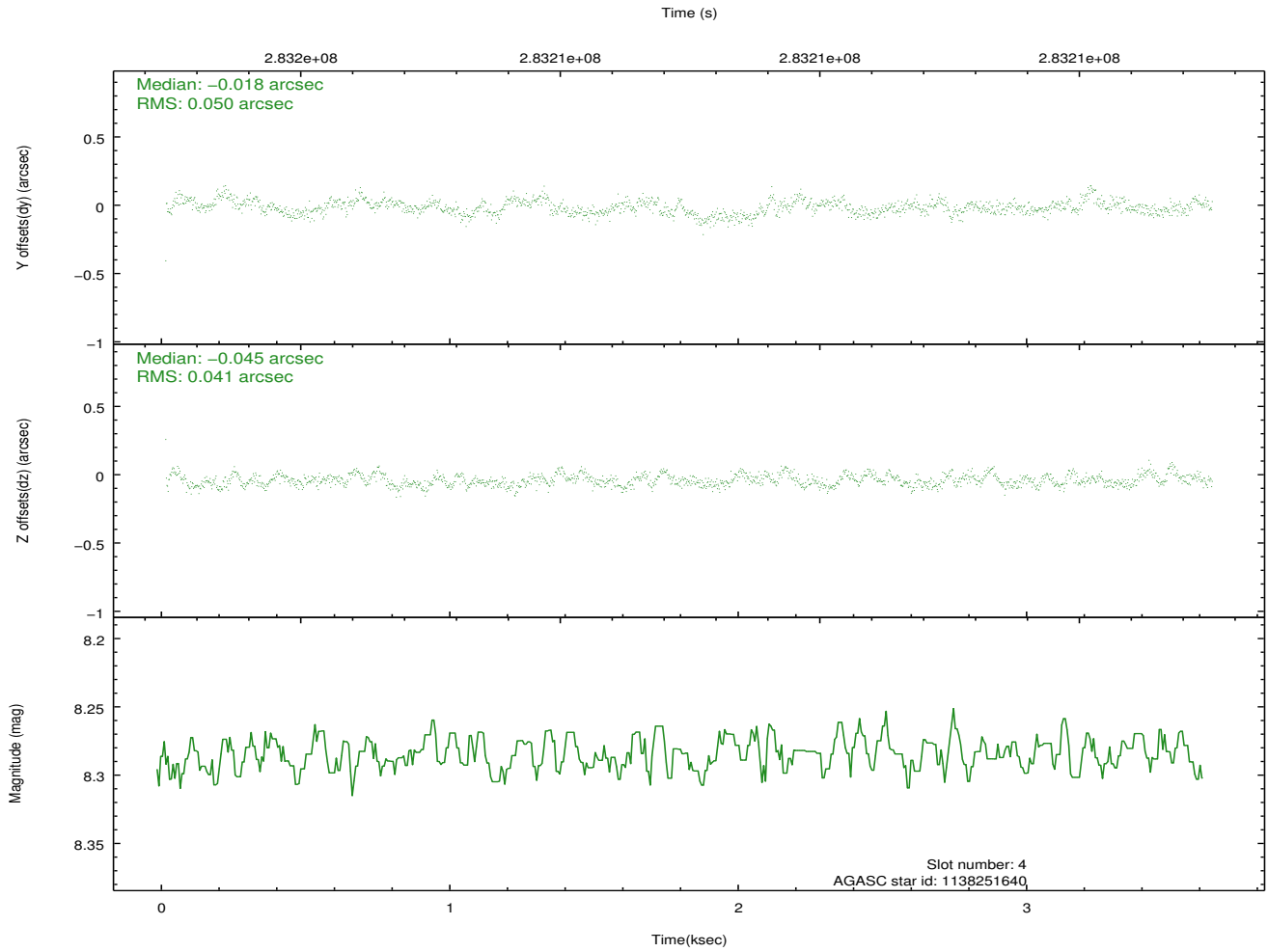
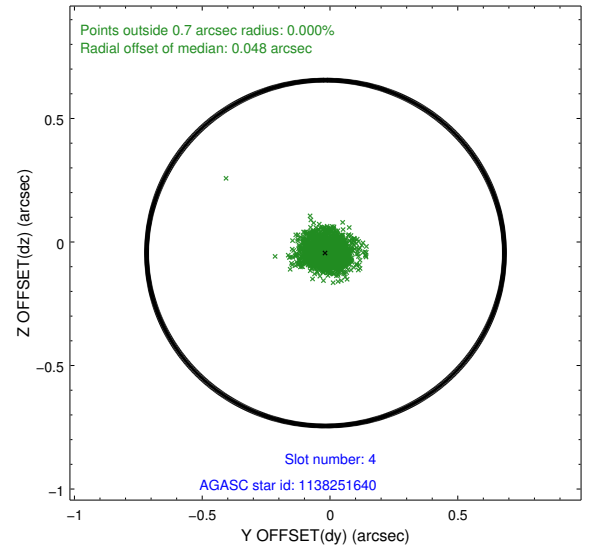
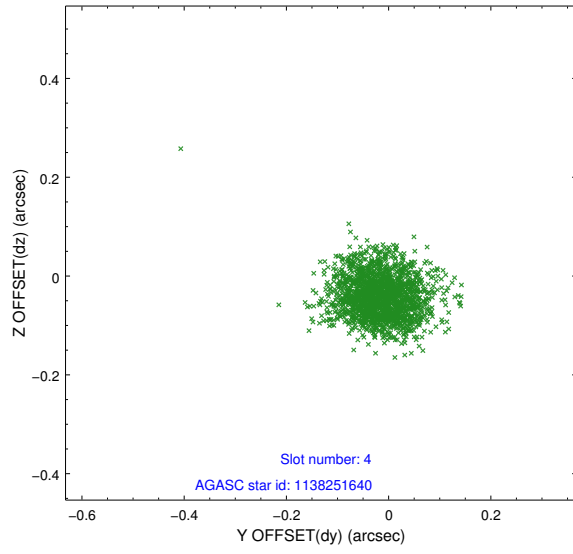
slot	status	id	mag	n_pts	med_dy	med_dz	dr1	dr2	ra	dec	mean_y	mean_z
0	FID	ACIS-I-1	7.19	885	0.214	-0.985	0.007	0.014	0.000000	0.000000	928.19	-1383.59
1	FID	ACIS-I-4	7.22	884	-0.240	0.583	0.007	0.013	0.000000	0.000000	2147.09	518.78
2	FID	ACIS-I-5	7.21	886	-0.001	0.414	0.006	0.011	0.000000	0.000000	-1818.45	515.06
3	GUIDE	1138250664	8.45	1770	0.006	0.126	0.072	0.121	223.284895	-55.915820	-1818.79	-1692.58
4	GUIDE	1138251640	8.28	1771	-0.018	-0.045	0.069	0.110	222.053129	-56.008736	-1190.76	730.54
5	GUIDE	1138253520	9.28	1769	-0.087	-0.154	0.084	0.137	221.334241	-56.062390	-842.32	2148.16
6	GUIDE	1138249984	8.92	1766	0.086	0.115	0.070	0.116	222.888207	-55.788403	-1087.95	-1127.25
7	GUIDE	1138235032	9.82	1751	0.011	-0.044	0.124	0.197	220.714472	-55.314794	2120.71	2364.09

2.4 Star Slots

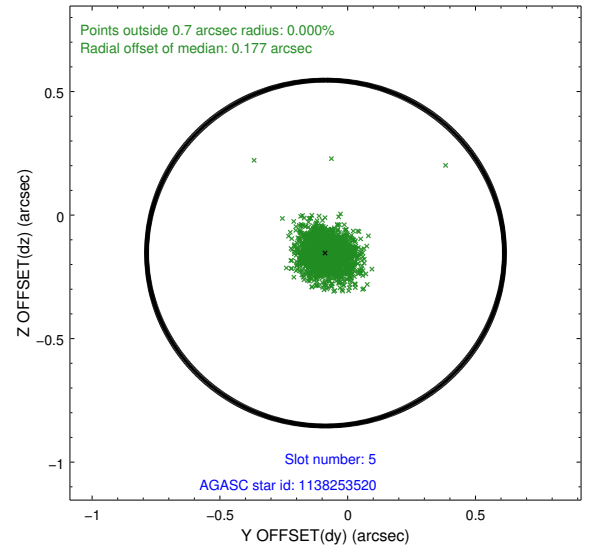
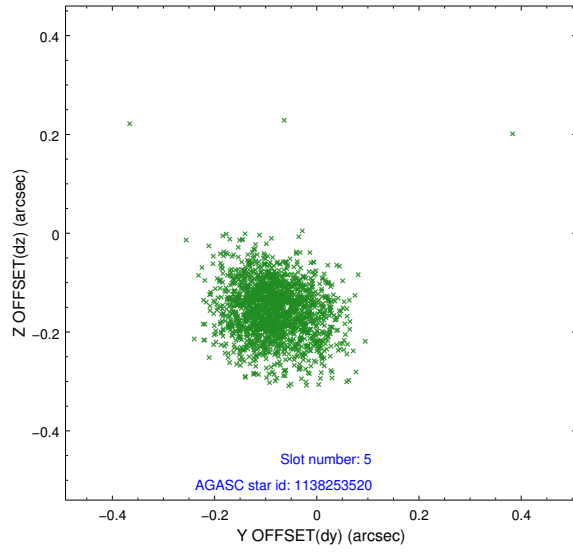
2.4.1 Slot 3



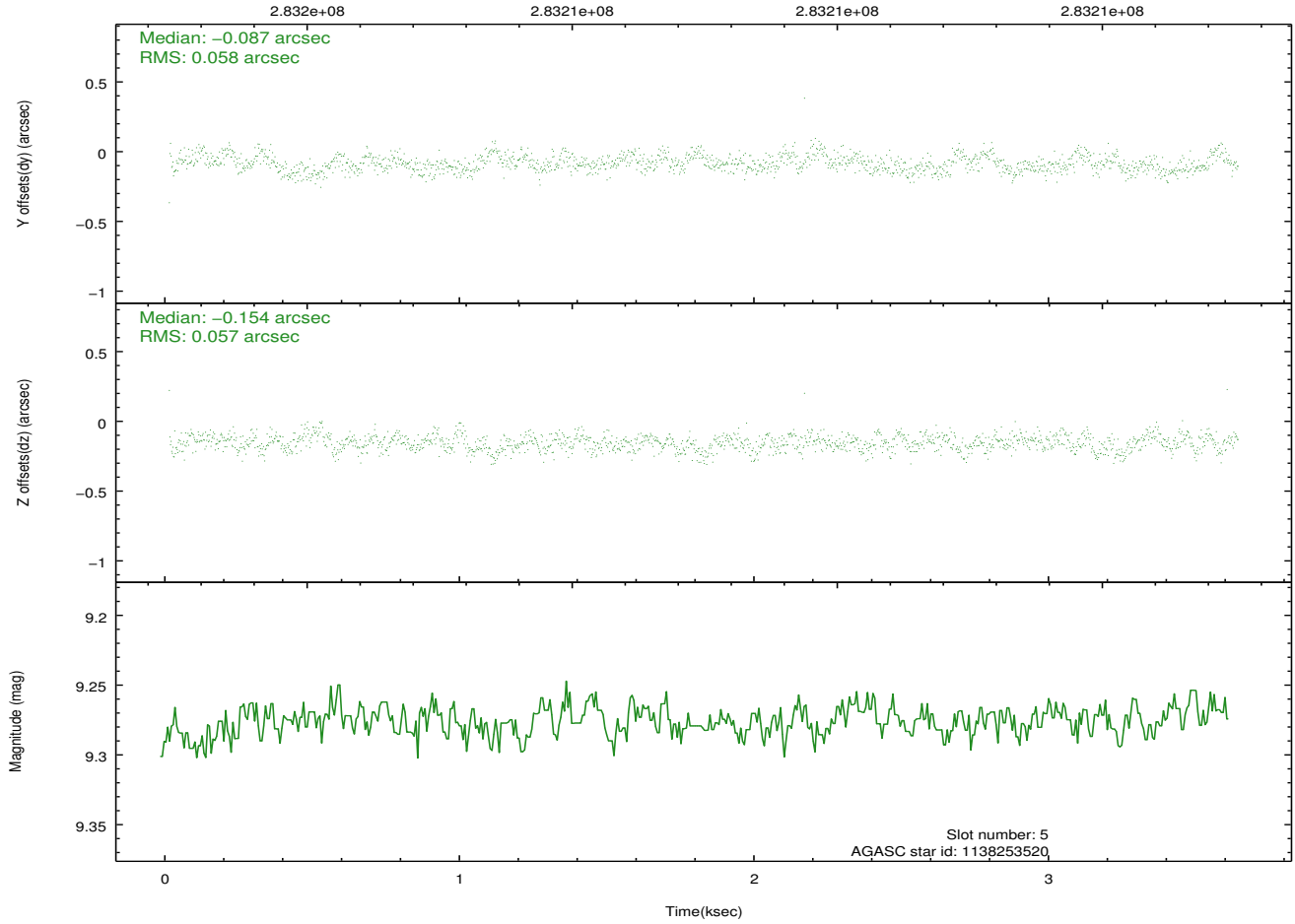
2.4.2 Slot 4



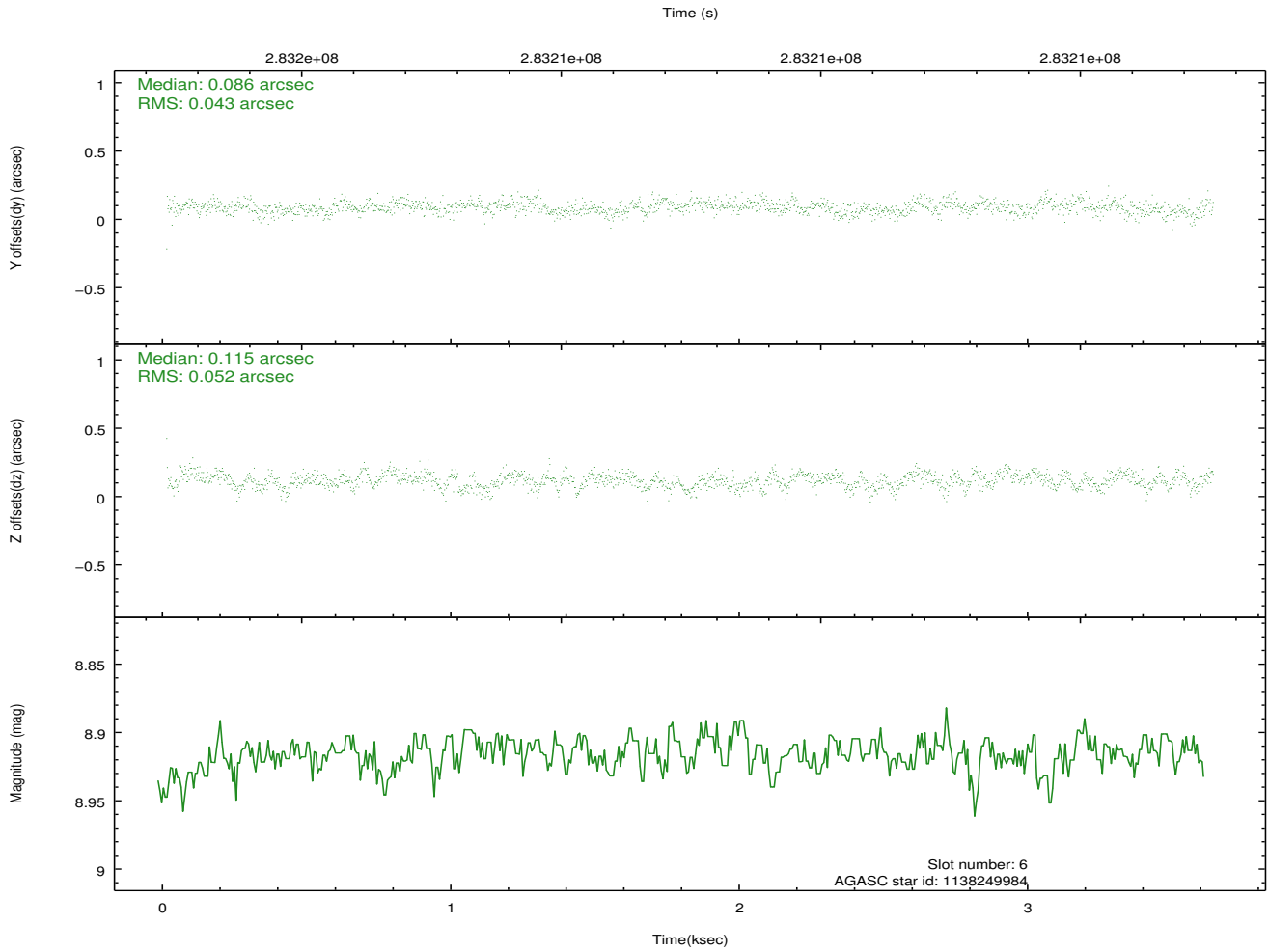
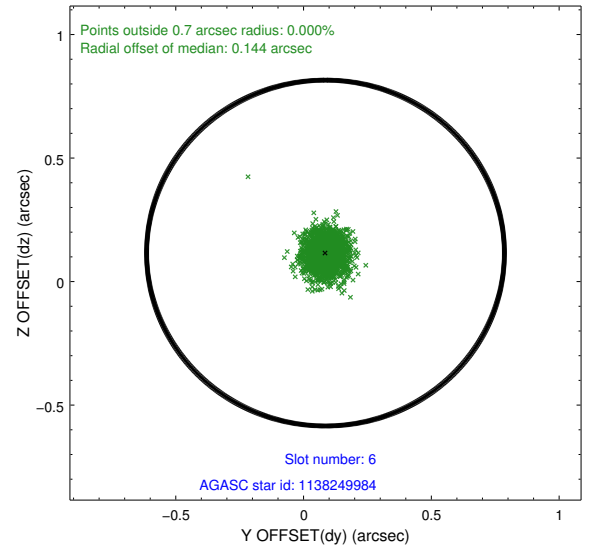
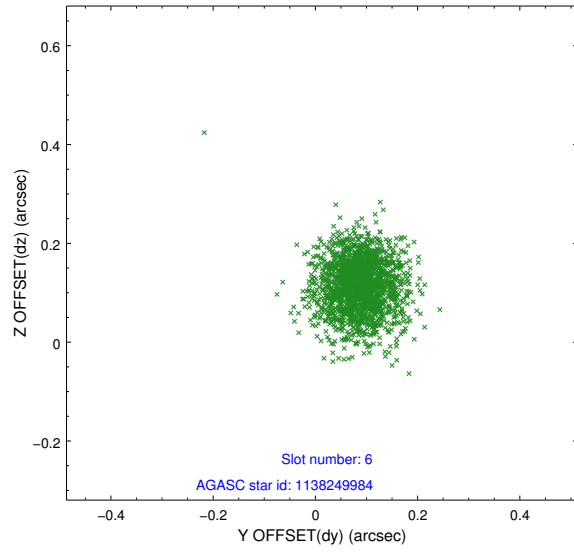
2.4.3 Slot 5



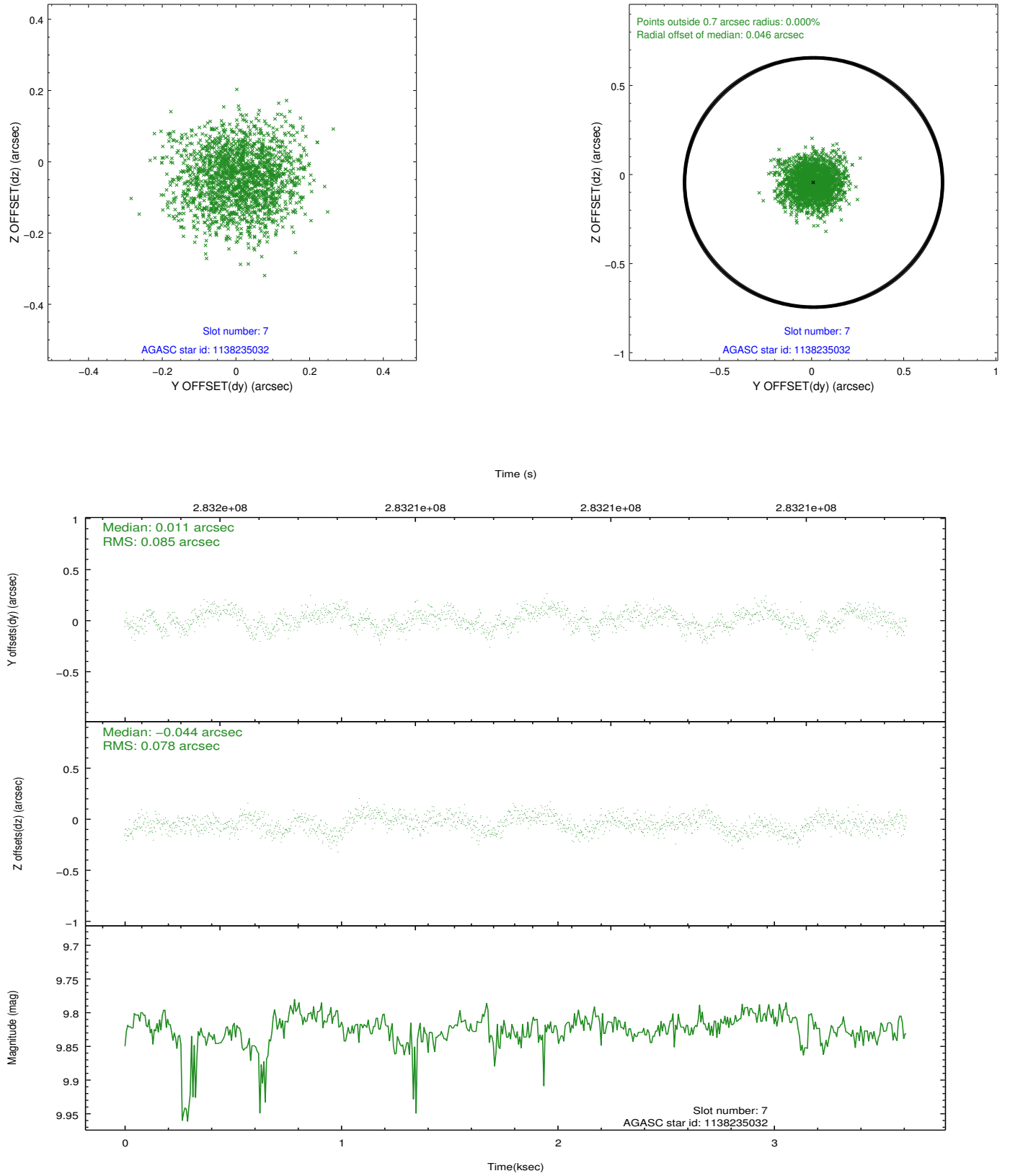
Time (s)



2.4.4 Slot 6

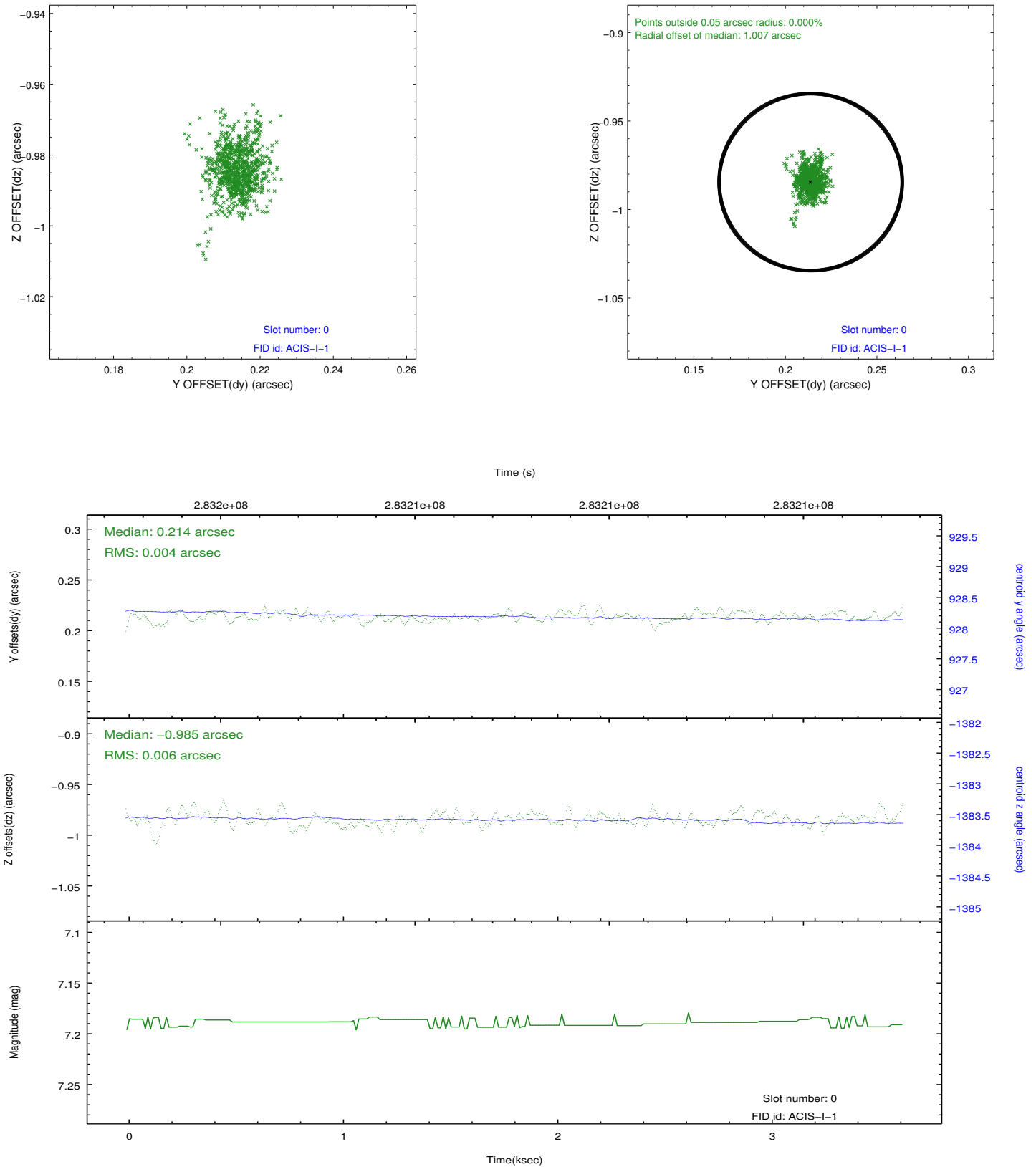


2.4.5 Slot 7

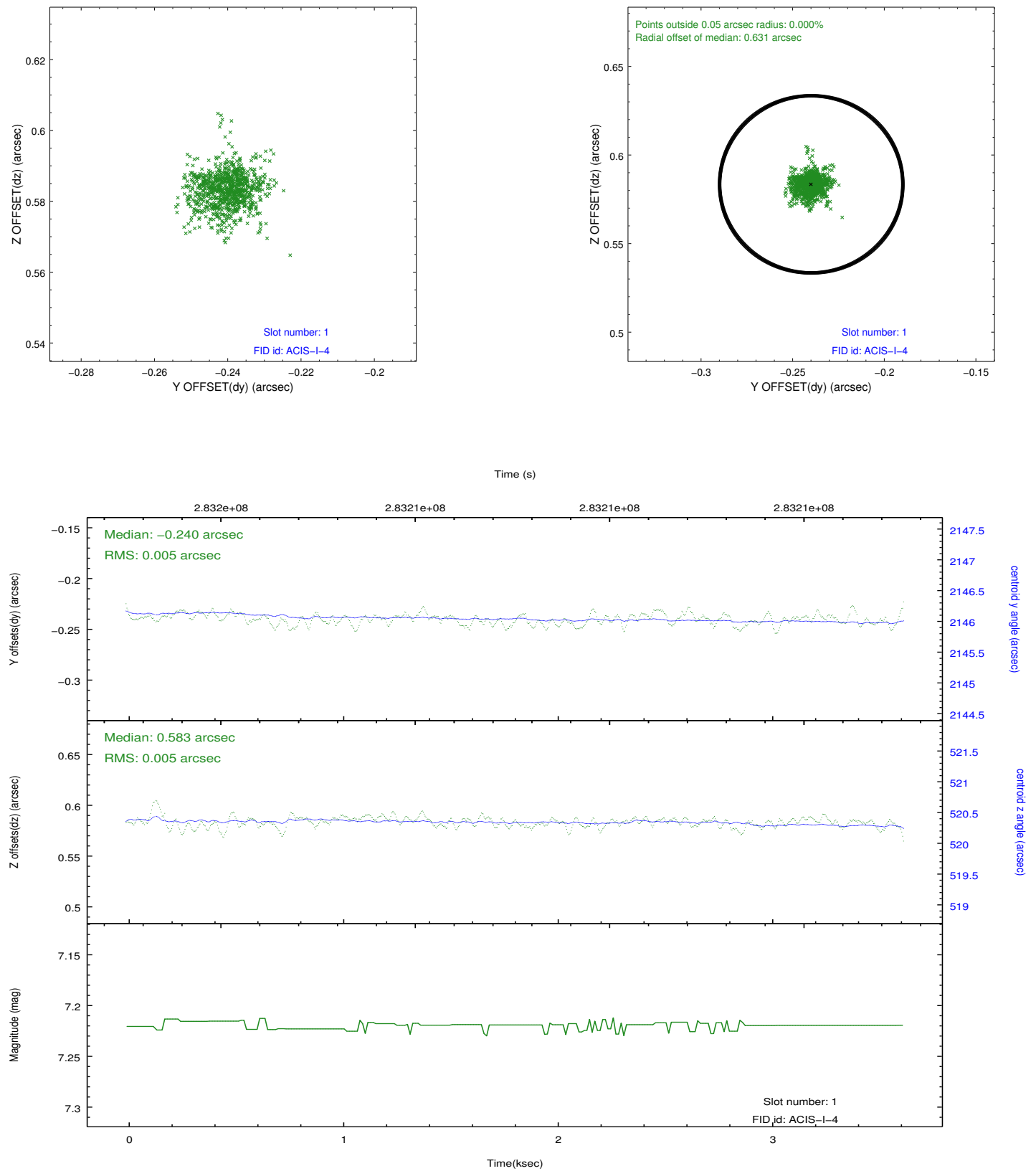


2.5 FID Slots

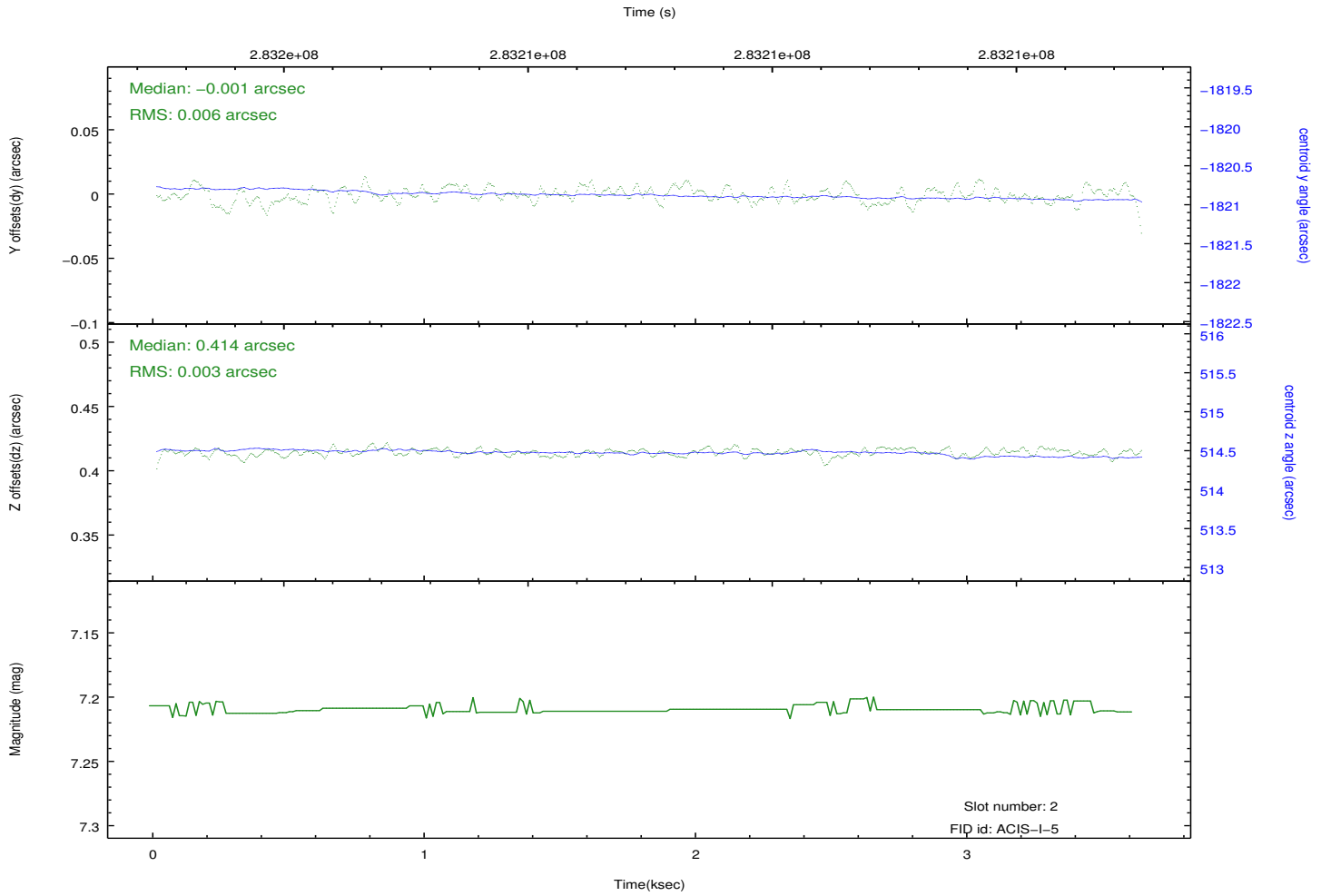
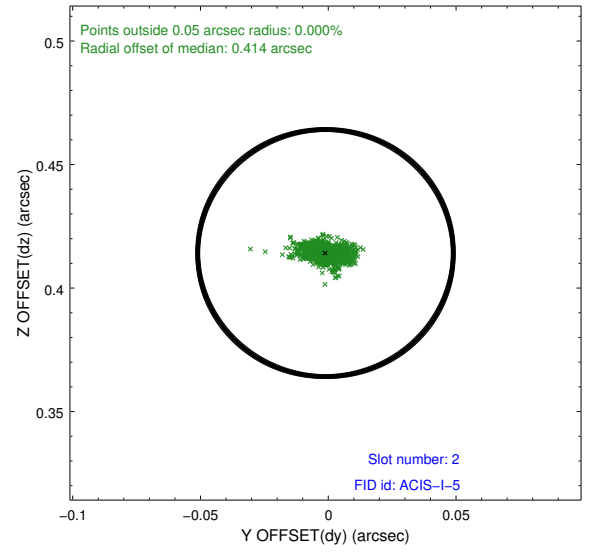
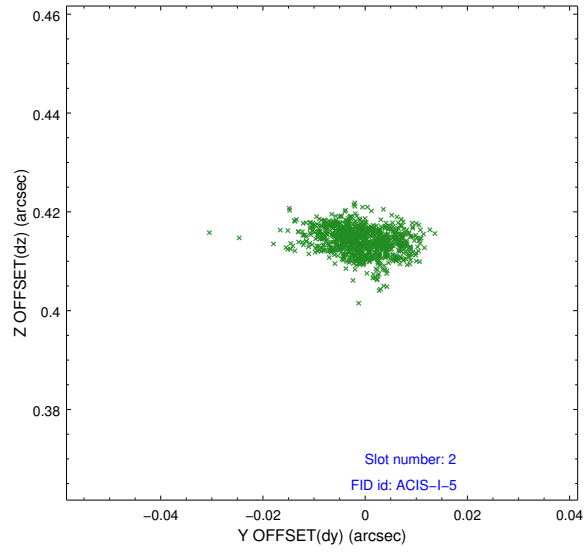
2.5.1 Slot 0



2.5.2 Slot 1



2.5.3 Slot 2



A Summary

A.1 Status

V&V Scientist	Jen Lauer
V&V Date (YYYY-MM-DD)	2012.04.24
V&V Edition	1
V&V Disposition and Status	OK
V&V Charge Time	3.61919998

A.2 Comments

This observation was performed with a large SIM offset, per PI request. As a result, the fid light positions are offset beyond normally expected ranges, but the fid light position correction has compensated for this offset. Data reprocessed to correct aspect offset error.