

V&V Reference Report

L2 ASCDS Version : 8.4.4

Observation 7764 - L2 Version 3
Chandra X-Ray Center

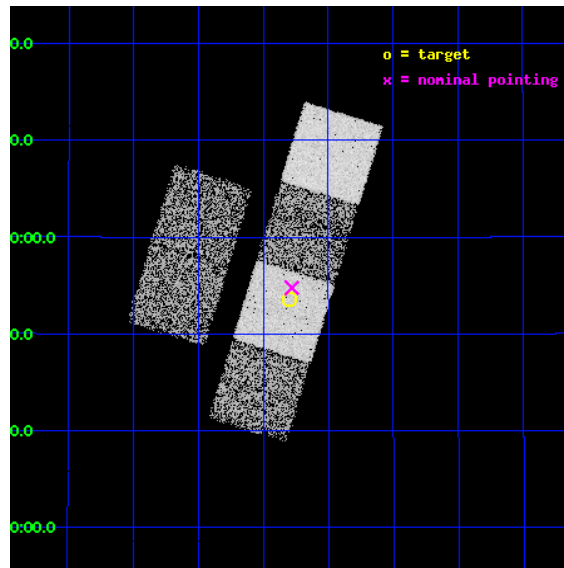
L2 Processing Date : Apr 30 2012

Contents

1	Front	2
2	OBI	3
2.1	OBI	3
2.1.1	Images	3
2.1.2	Bias	3
2.1.3	Parameters	4
2.1.4	Events	4
2.2	Compared Parameters	5
2.3	Aspect	6
2.4	Star Slots	9
2.4.1	Slot 3	9
2.4.2	Slot 4	10
2.4.3	Slot 5	11
2.4.4	Slot 6	12
2.4.5	Slot 7	13
2.5	FID Slots	14
2.5.1	Slot 0	14
2.5.2	Slot 1	15
2.5.3	Slot 2	16
A	Summary	17
A.1	Status	17
A.2	Comments	17

1 Front

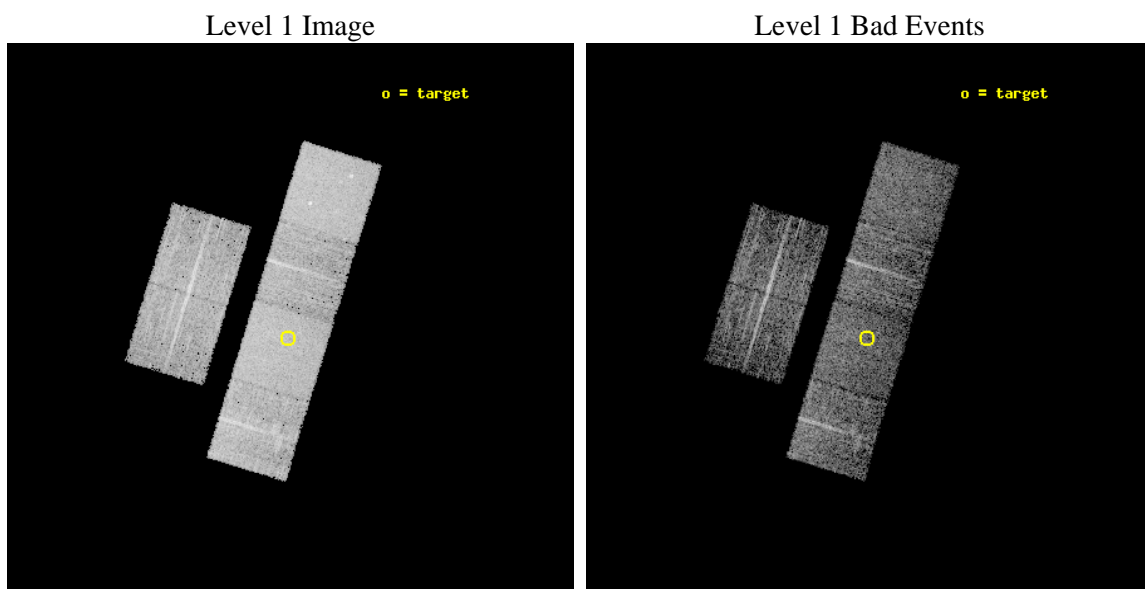
seq_num	701432	Sequence number
obs_id	7764	Observation id
title	Investigating AGN Activity in Low Surface Brightness Galaxies	Prop
observer	Dr Mousumi Das	Principal investigator
object	UGC 1455	Source name
dtcycle	0	
cycle	P	events from which exps? Prim/Second/Both
ra_targ	29.7	Observer's specified target RA [deg]
dec_targ	24.8925	Observer's specified target Dec [deg]
ra_nom	29.694993177378	Nominal RA [deg]
dec_nom	24.91284008777	Nominal Dec [deg]
roll_nom	107.08117296045	Nominal Roll [deg]
revision	3	Processing version of data
ontime	3785.5999859571	Sum of GTIs [s]
livetime	3737.6644395203	Livetime [s]
ontime2	3785.5999859571	Sum of GTIs [s]
ontime3	3785.5999859571	Sum of GTIs [s]
ontime5	3785.5999859571	Sum of GTIs [s]
ontime6	3785.5999859571	Sum of GTIs [s]
ontime7	3785.5999859571	Sum of GTIs [s]
ontime8	3785.5999859571	Sum of GTIs [s]
l2events	60182	Number of level 2 events



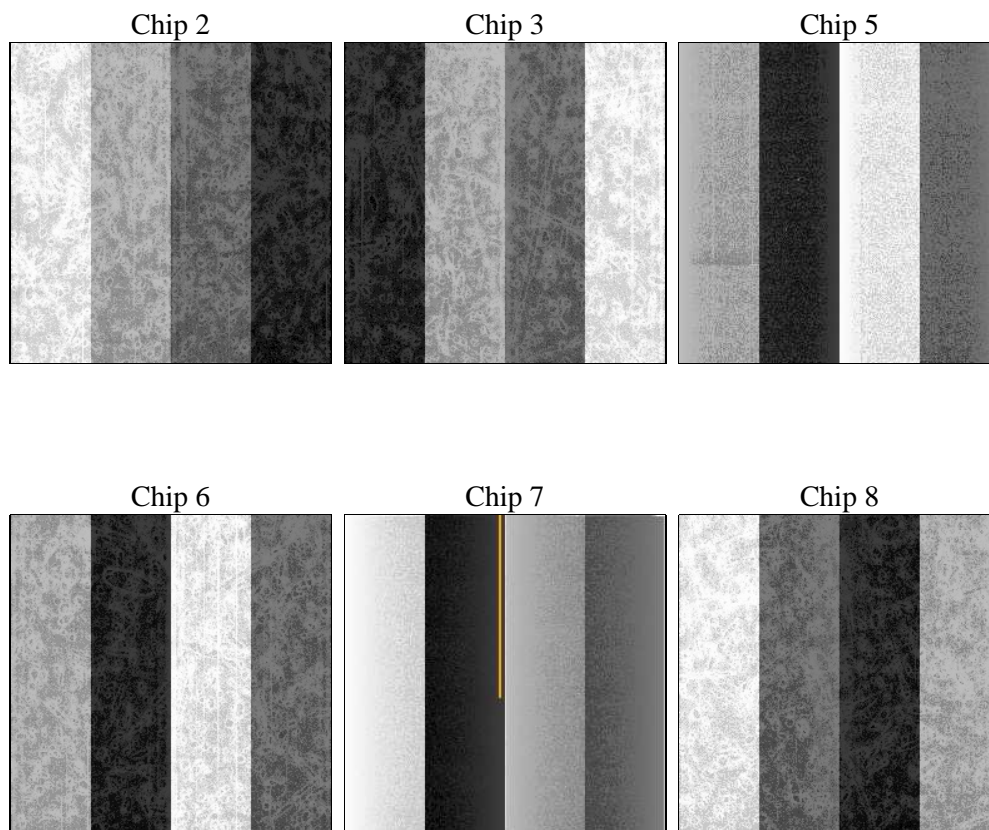
2 OBI

2.1 OBI

2.1.1 Images



2.1.2 Bias



2.1.3 Parameters

obi_num	0	Obi number	sched_exp_time	3600.000000	[s] Scheduled observation exposure time
ascdsver	8.4.4	Processing system revision	ontime	3785.5999859571	Sum of GTIs [s]
caldsver	4.4.9	 	ontime2	3785.5999859571	Sum of GTIs [s]
date	2012-04-30T14:39:14	Date and time of file creation	ontime3	3785.5999859571	Sum of GTIs [s]
revision	3	Processing version of data	ontime5	3785.5999859571	Sum of GTIs [s]
			ontime6	3785.5999859571	Sum of GTIs [s]
			ontime7	3785.5999859571	Sum of GTIs [s]
			ontime8	3785.5999859571	Sum of GTIs [s]
			l1events	321323	Number of level 1 events

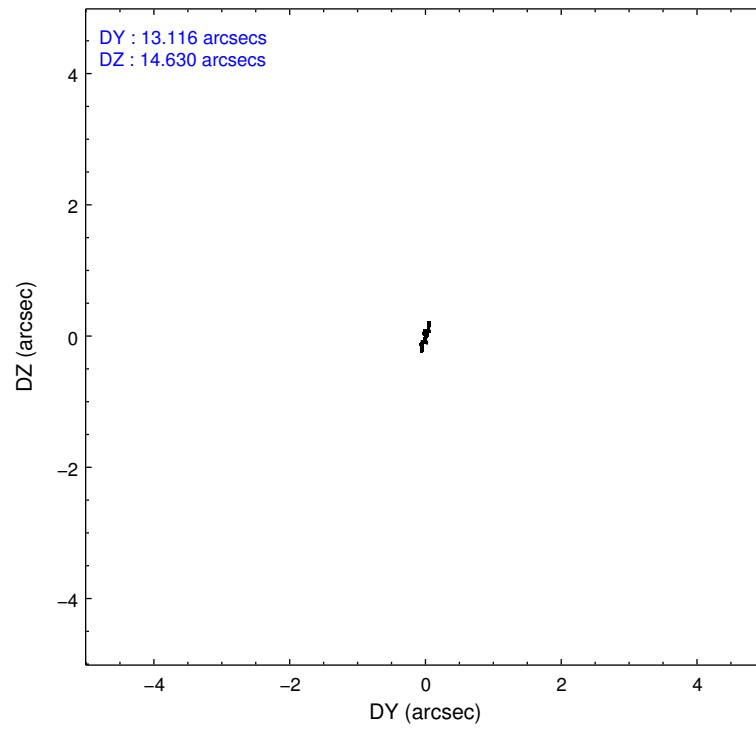
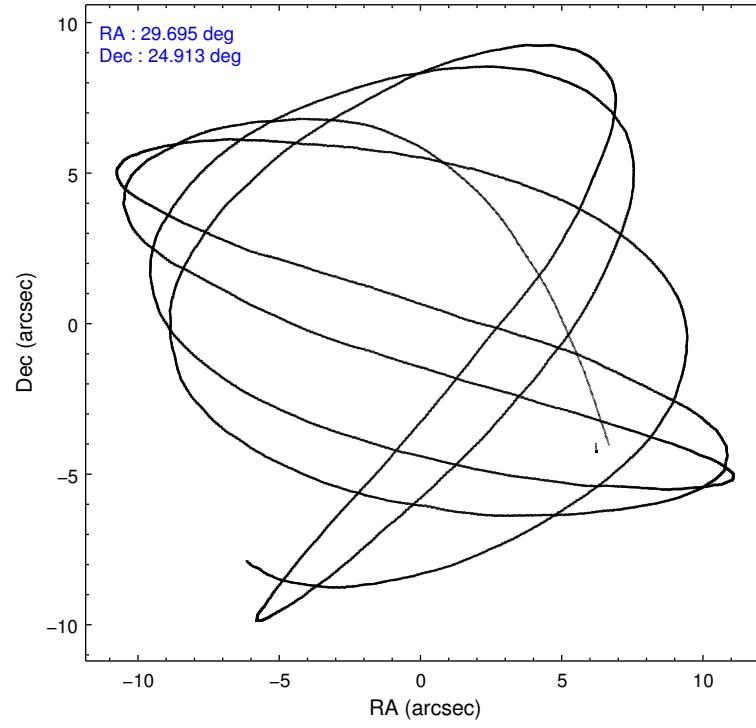
2.1.4 Events

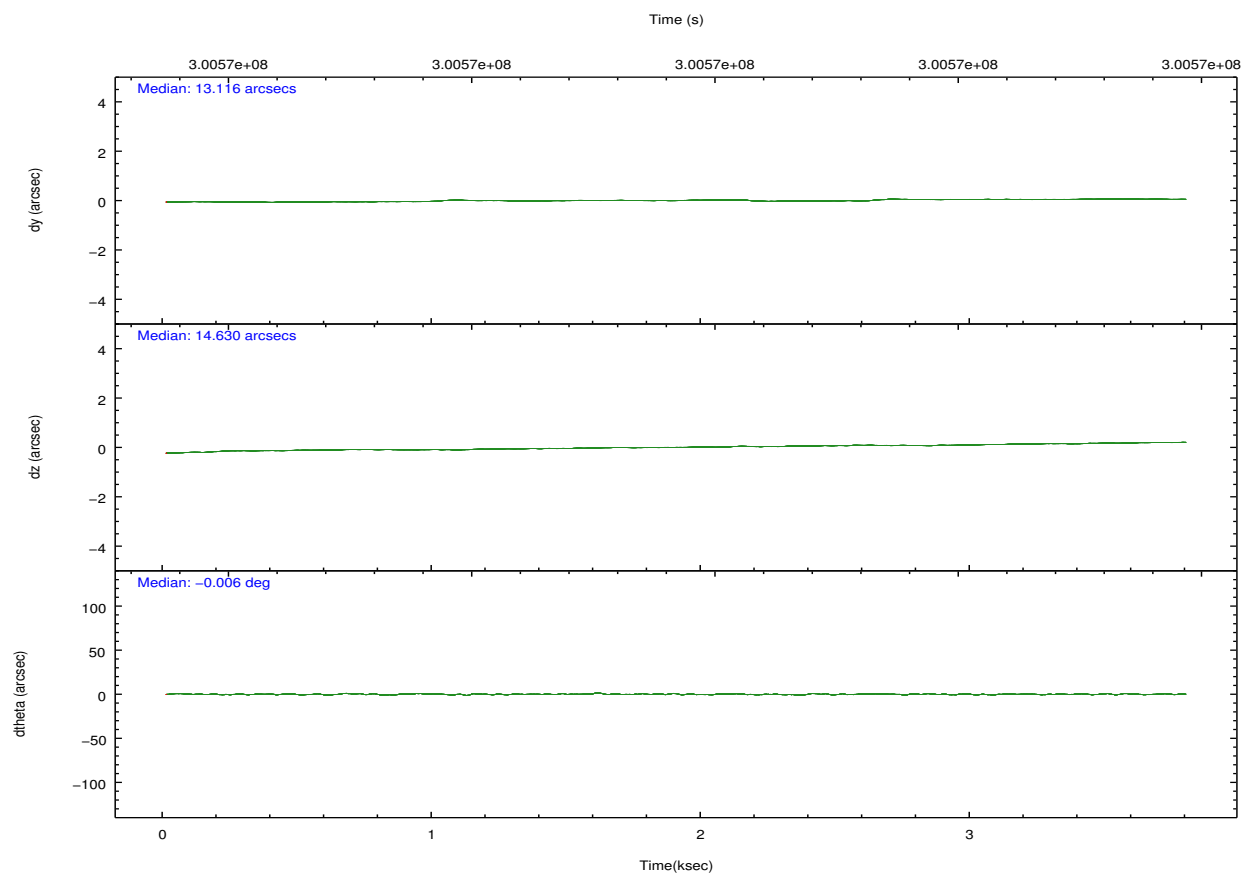
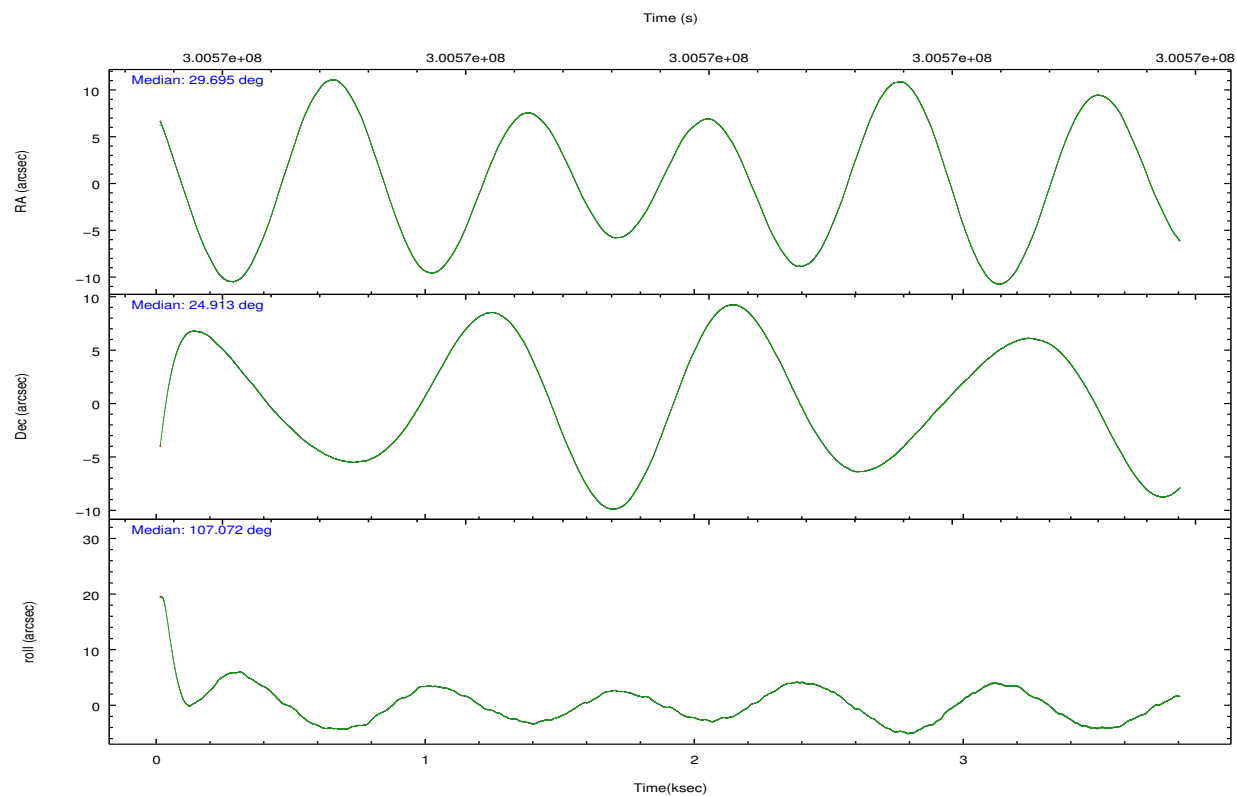
	ccd 2	ccd 3	ccd 5	ccd 6	ccd 7	ccd 8		ccd 2	ccd 3	ccd 5	ccd 6	ccd 7	ccd 8
level 1 events	46228	40888	69433	45828	62646	56300	grade 0 events	2507	2320	2912	2176	2324	4320
rejected events	41759	36648	44423	41358	41585	45497		5%	5%	4%	4%	3%	7%
rejected %	90%	89%	63%	90%	66%	80%	grade 1 events	29	30	179	30	60	56
								0%	0%	0%	0%	0%	0%
							grade 2 events	1198	1090	9560	1241	5433	2987
								2%	2%	13%	2%	8%	5%
							grade 3 events	504	475	1112	556	2301	1455
								1%	1%	1%	1%	3%	2%
							grade 4 events	486	502	1114	550	2230	1414
								1%	1%	1%	1%	3%	2%
							grade 5 events	1797	2046	4923	2145	5775	2751
								3%	5%	7%	4%	9%	4%
							grade 6 events	947	919	17113	1097	14086	3415
								2%	2%	24%	2%	22%	6%
							grade 7 events	38760	33506	32520	38033	30437	39902
								83%	81%	46%	82%	48%	70%

2.2 Compared Parameters

Parameter	Planned	Actual	Parameter	Planned	Actual
Instrument	ACIS	ACIS	Obspar format version number	7	7
Detector	ACIS-235678	ACIS-235678	Obspar file type	PREDICTED	ACTUAL
Grating	NONE	NONE	Obspar update status	NONE	UPDATED
Data mode	FAINT	FAINT	CCD I0 on	N	N
Observation mode	POINTING	POINTING	CCD I1 on	N	N
[deg] Pointing RA	29.717382	29.69499317737808	CCD I2 on	O1	Y
[deg] Pointing Dec	24.894510	24.91284008776975	CCD I3 on	O2	Y
[deg] Pointing Roll	106.915043	107.081172960454	CCD S0 on	N	N
[mm] SIM focus pos	-0.684267	-0.6828225247311905	CCD S1 on	Y	Y
[mm] SIM defocus	0	0.001444936568705701	CCD S2 on	Y	Y
[mm] SIM translation stage pos	-190.132523	-190.1400660498719	CCD S3 on	Y	Y
[mm] SIM translation stage offset	0	0.00754346686406393	CCD S4 on	Y	Y
[s] Observation start time (MET)	300568141.184000	300566439.7319	CCD S5 on	N	N
Observation start date	2007-07-11T19:07:56	2007-07-11T18:40:39	Number of optional ACIS chips dropped	0	0
[s] Observation end time (MET)	300571741.184000	300572379.09469	On-chip summing requested	N	N
Observation end date	2007-07-11T20:07:56	2007-07-11T20:19:39	Subarray requested	NONE	NONE
Read mode	TIMED	TIMED	Alternating exposures requested	N	N
			[s] Primary exposure time	0.000000	3.2

2.3 Aspect



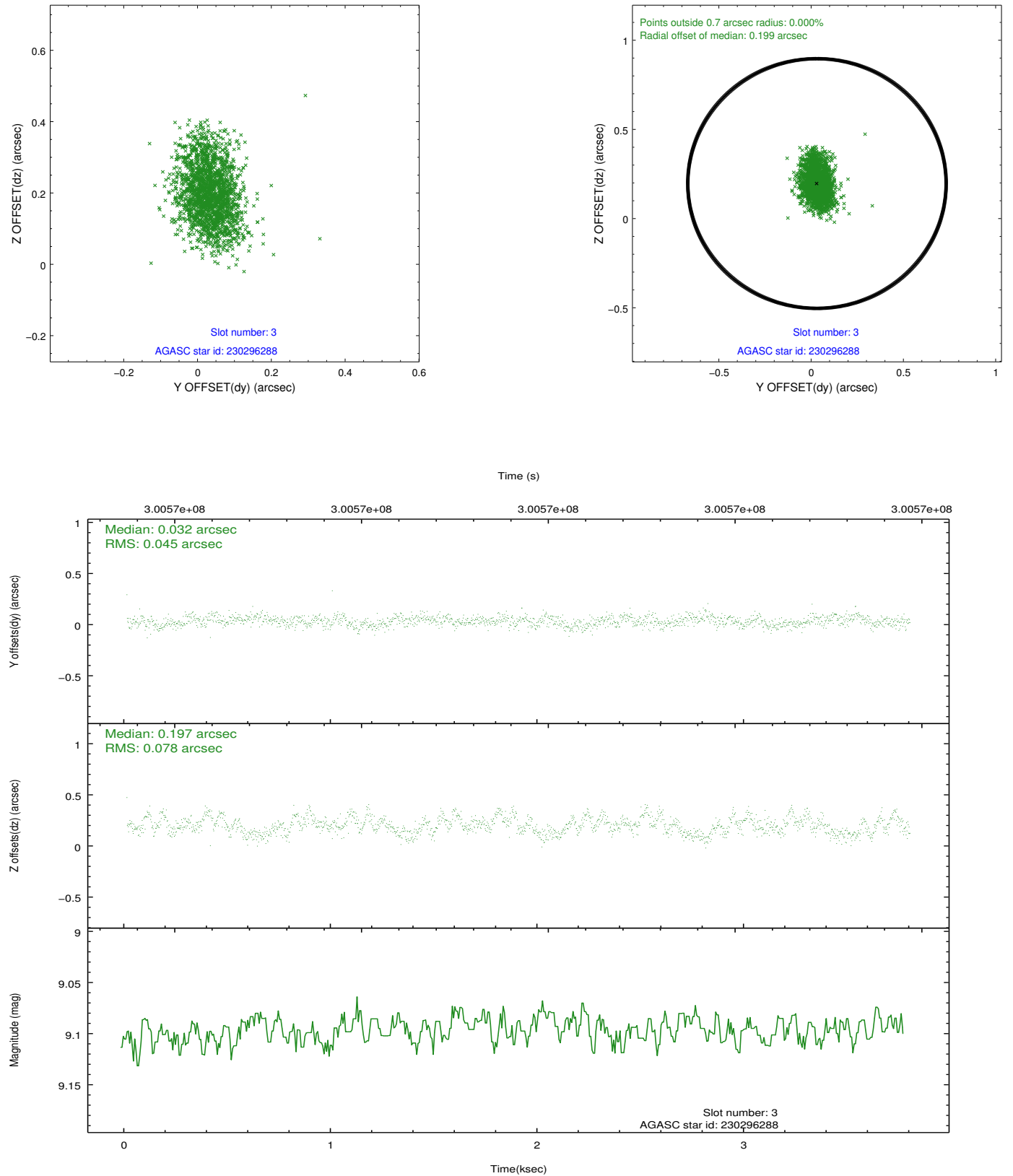


Slot Statistics

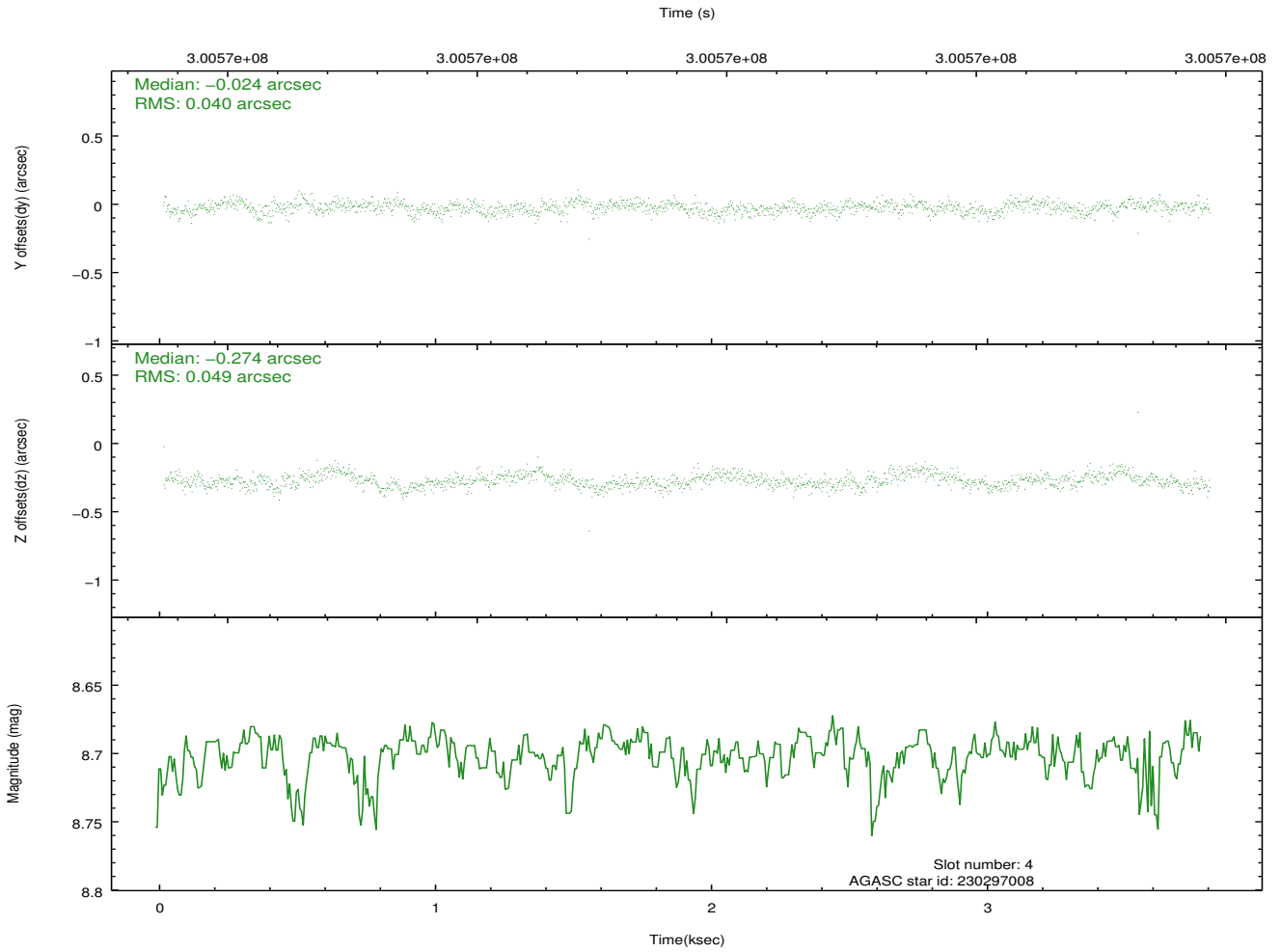
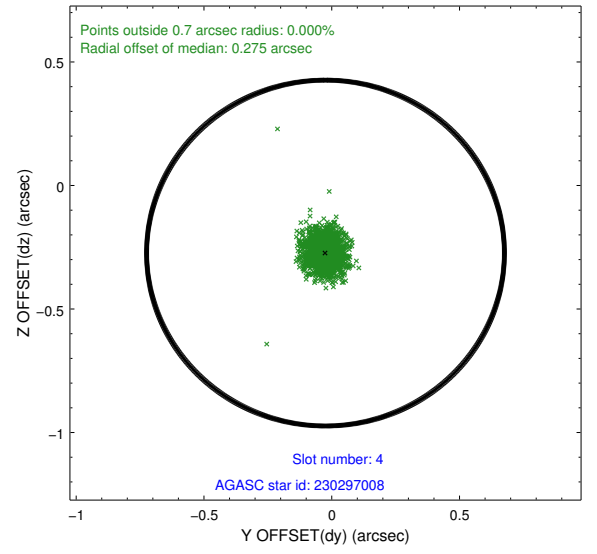
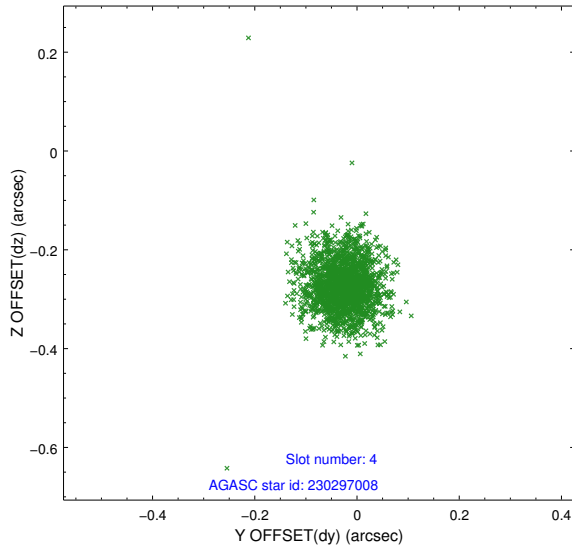
slot	status	id	mag	n_pts	med_dy	med_dz	dr1	dr2	ra	dec	mean_y	mean_z
0	FID	ACIS-S-1	7.18	925	0.081	-0.057	0.008	0.013	0.000000	0.000000	930.11	-1731.68
1	FID	ACIS-S-5	7.23	925	-0.149	0.049	0.006	0.011	0.000000	0.000000	-1818.23	164.23
2	FID	ACIS-S-6	7.33	925	0.047	0.020	0.010	0.016	0.000000	0.000000	393.80	810.07
3	GUIDE	230296288	9.10	1849	0.032	0.197	0.095	0.159	30.467305	24.938021	-555.35	-2389.33
4	GUIDE	230297008	8.70	1848	-0.024	-0.274	0.066	0.107	29.273978	24.736044	-122.09	1550.50
5	GUIDE	230300352	7.39	1850	0.113	0.007	0.044	0.075	30.292975	24.444369	-2095.02	-1333.70
6	GUIDE	230695192	9.16	1849	-0.076	0.122	0.088	0.143	30.310341	25.195137	476.67	-2164.65
7	GUIDE	230696920	7.74	1849	-0.046	-0.058	0.057	0.092	30.102792	25.052080	179.30	-1369.46

2.4 Star Slots

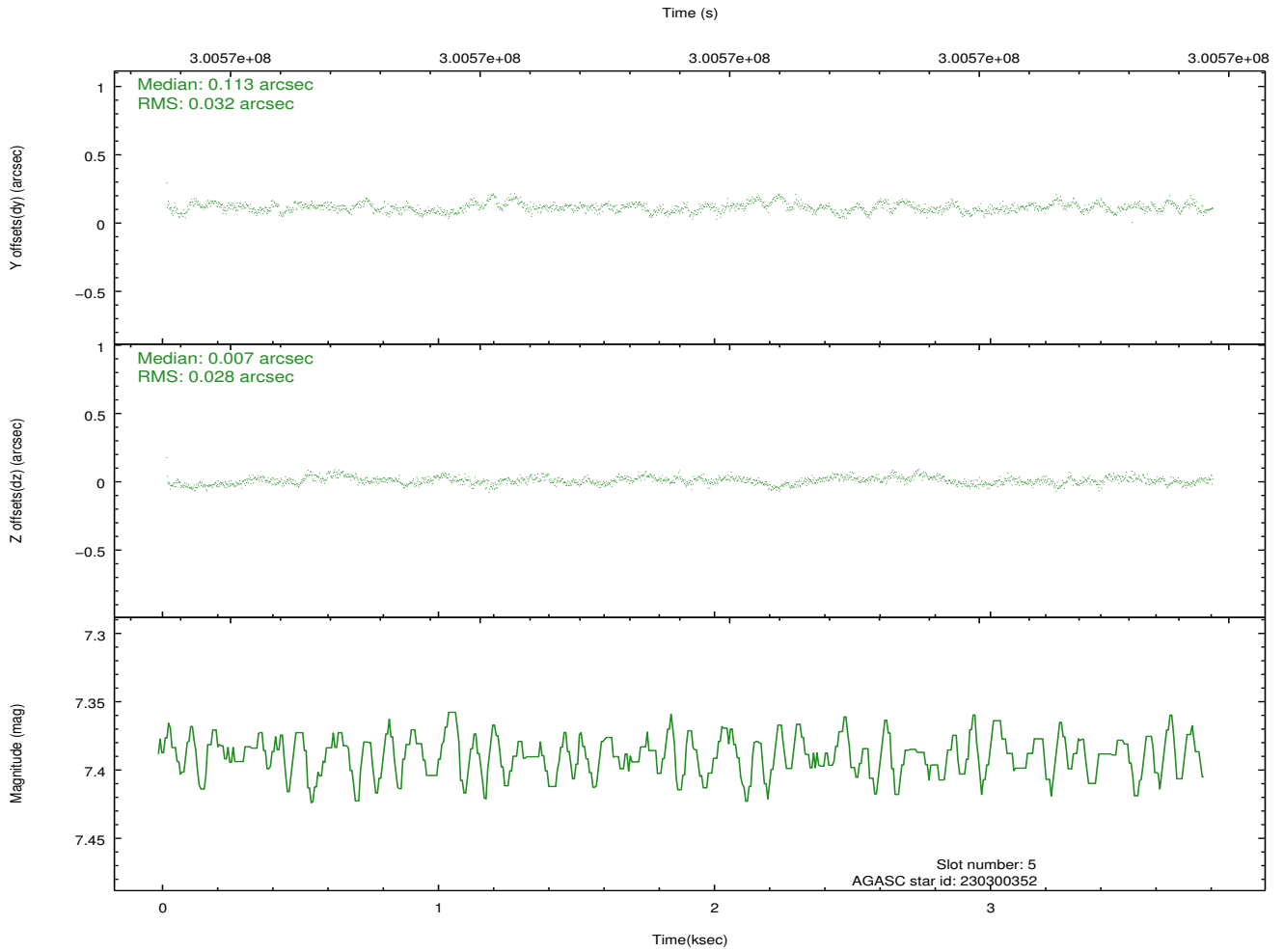
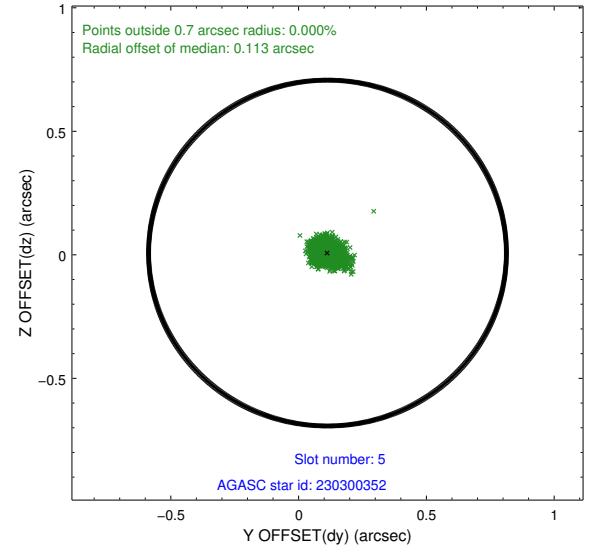
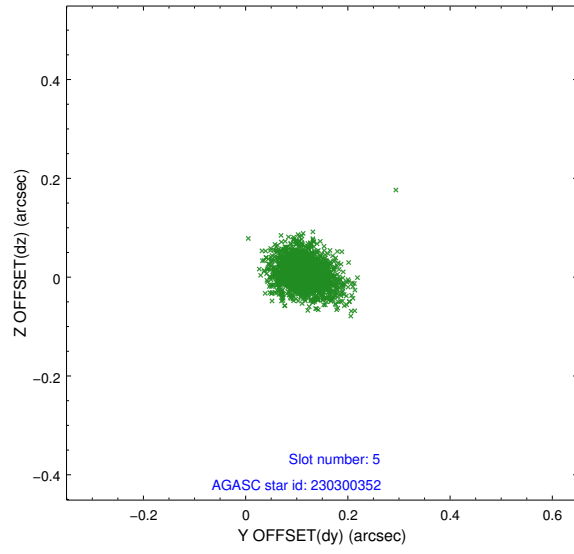
2.4.1 Slot 3



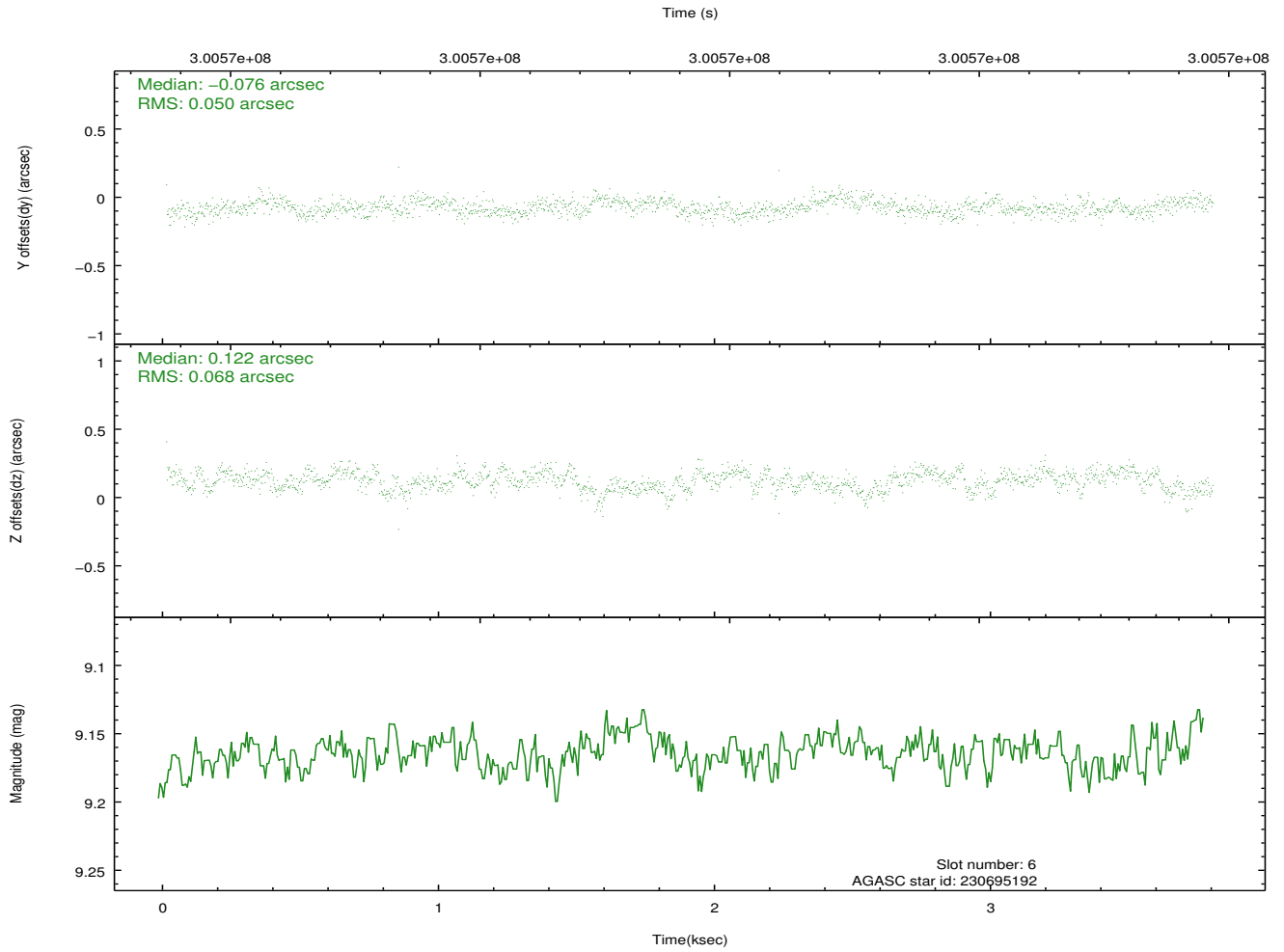
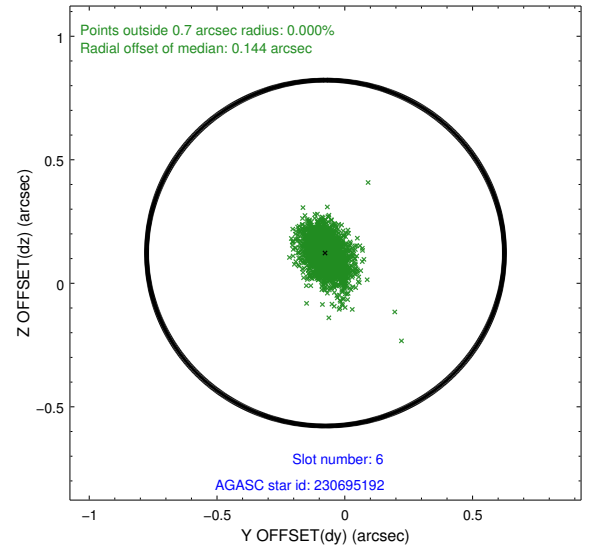
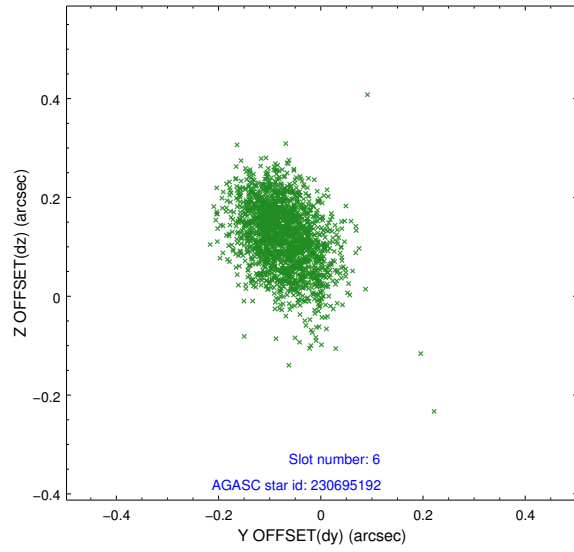
2.4.2 Slot 4



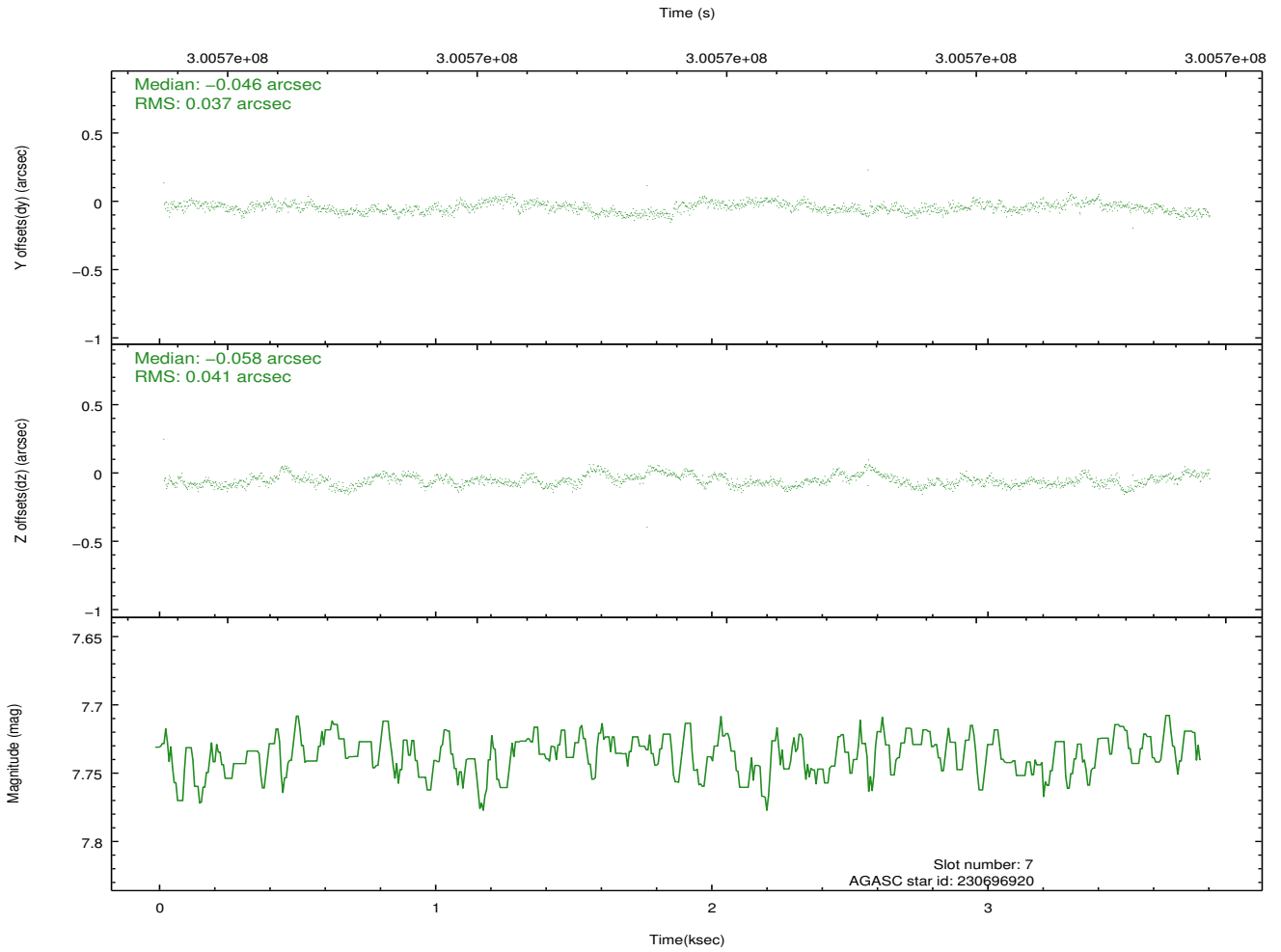
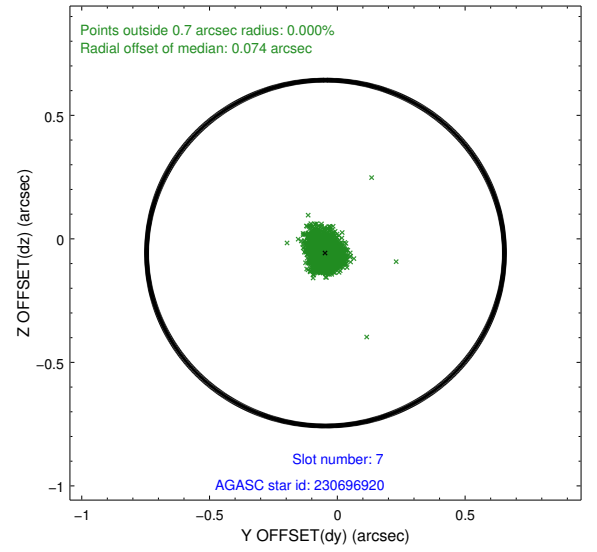
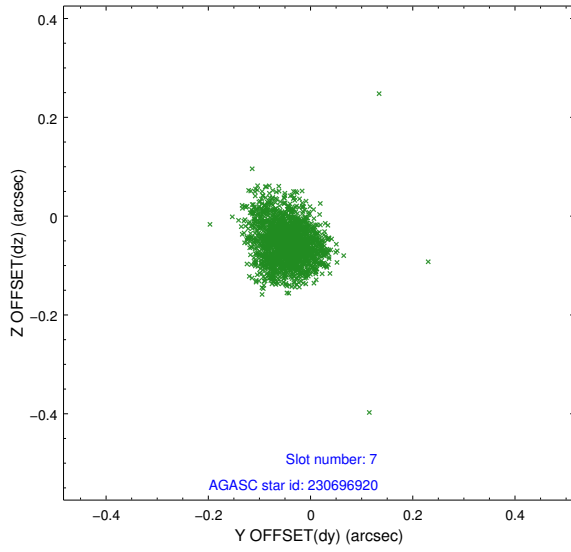
2.4.3 Slot 5



2.4.4 Slot 6

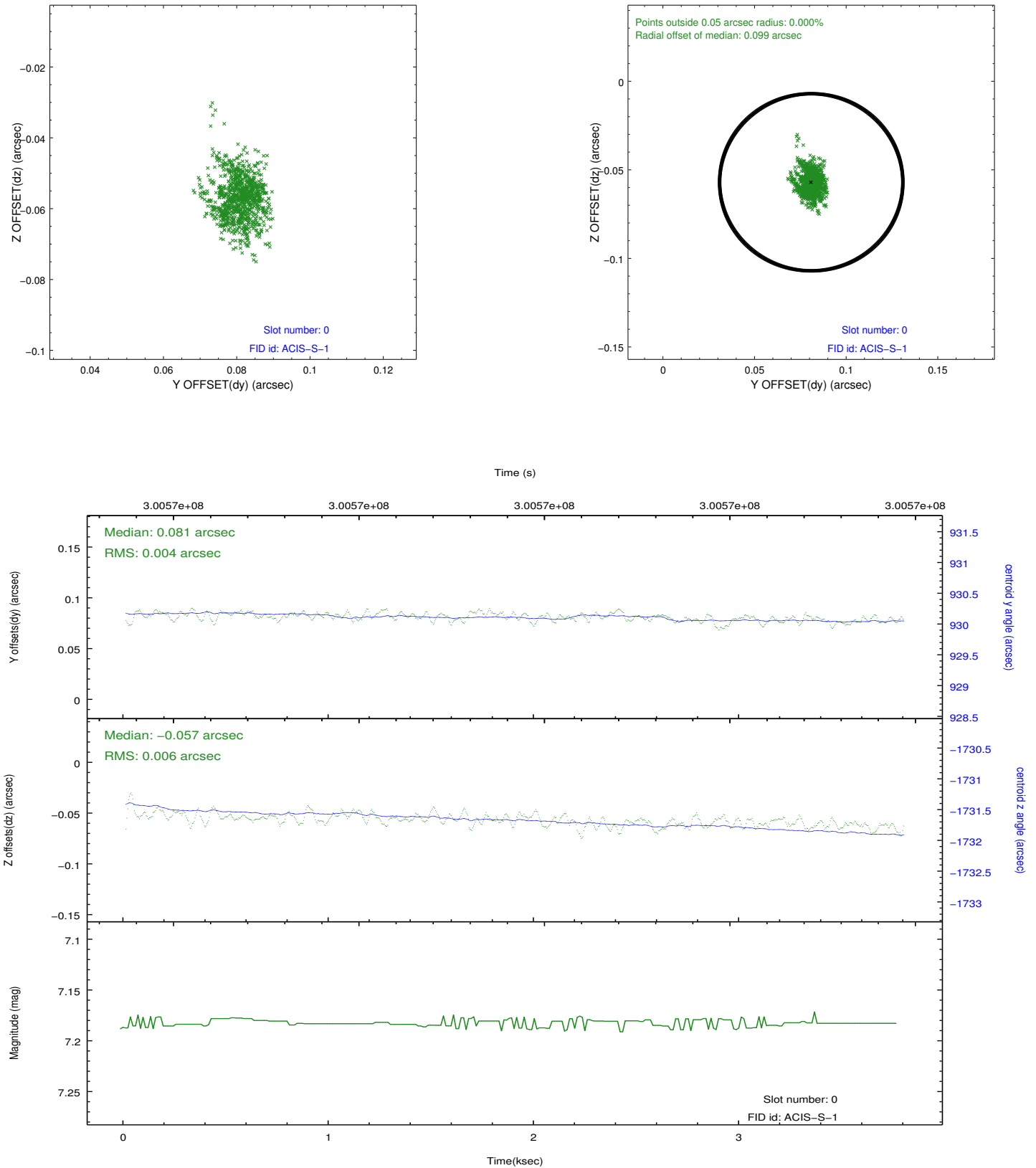


2.4.5 Slot 7

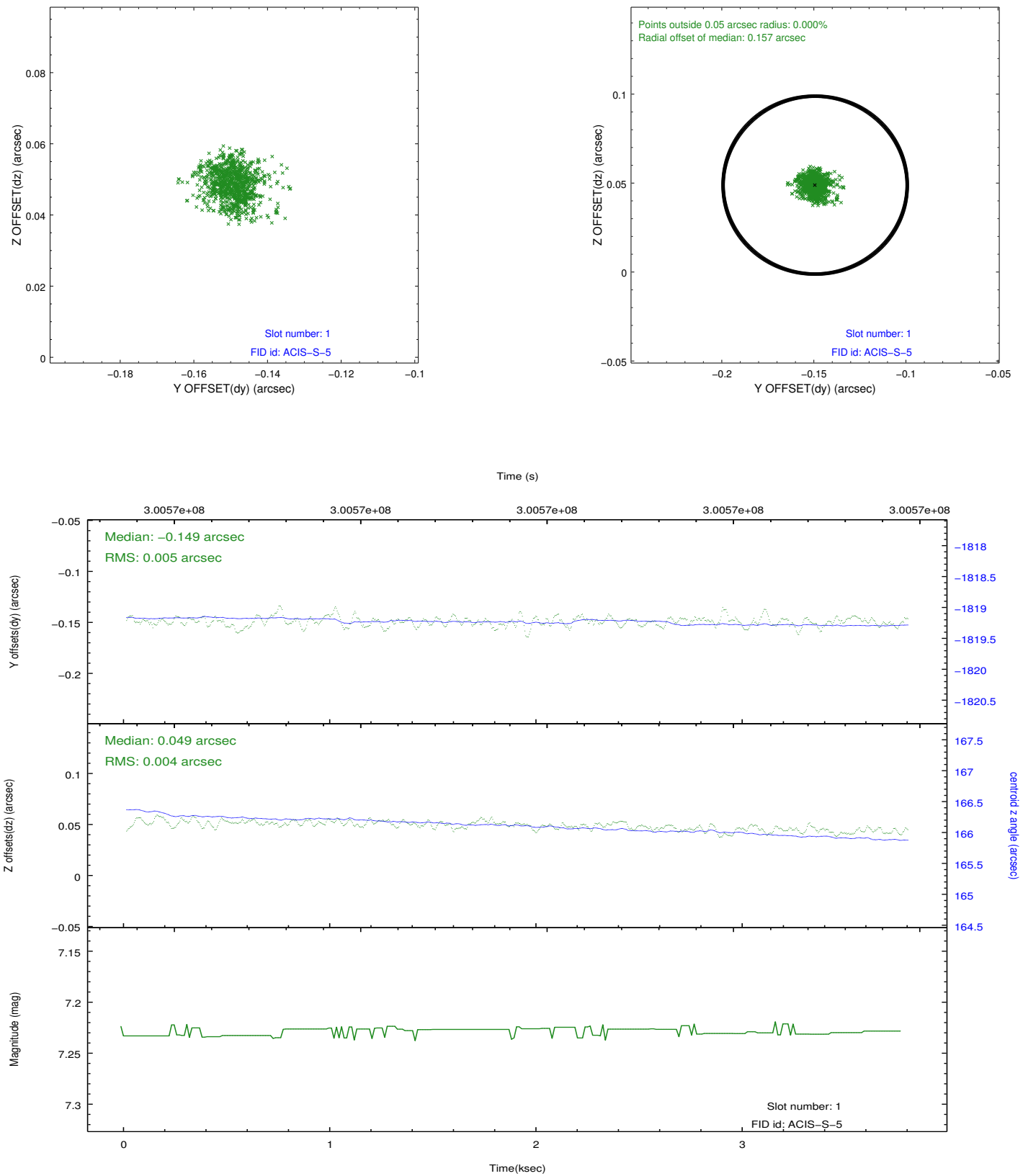


2.5 FID Slots

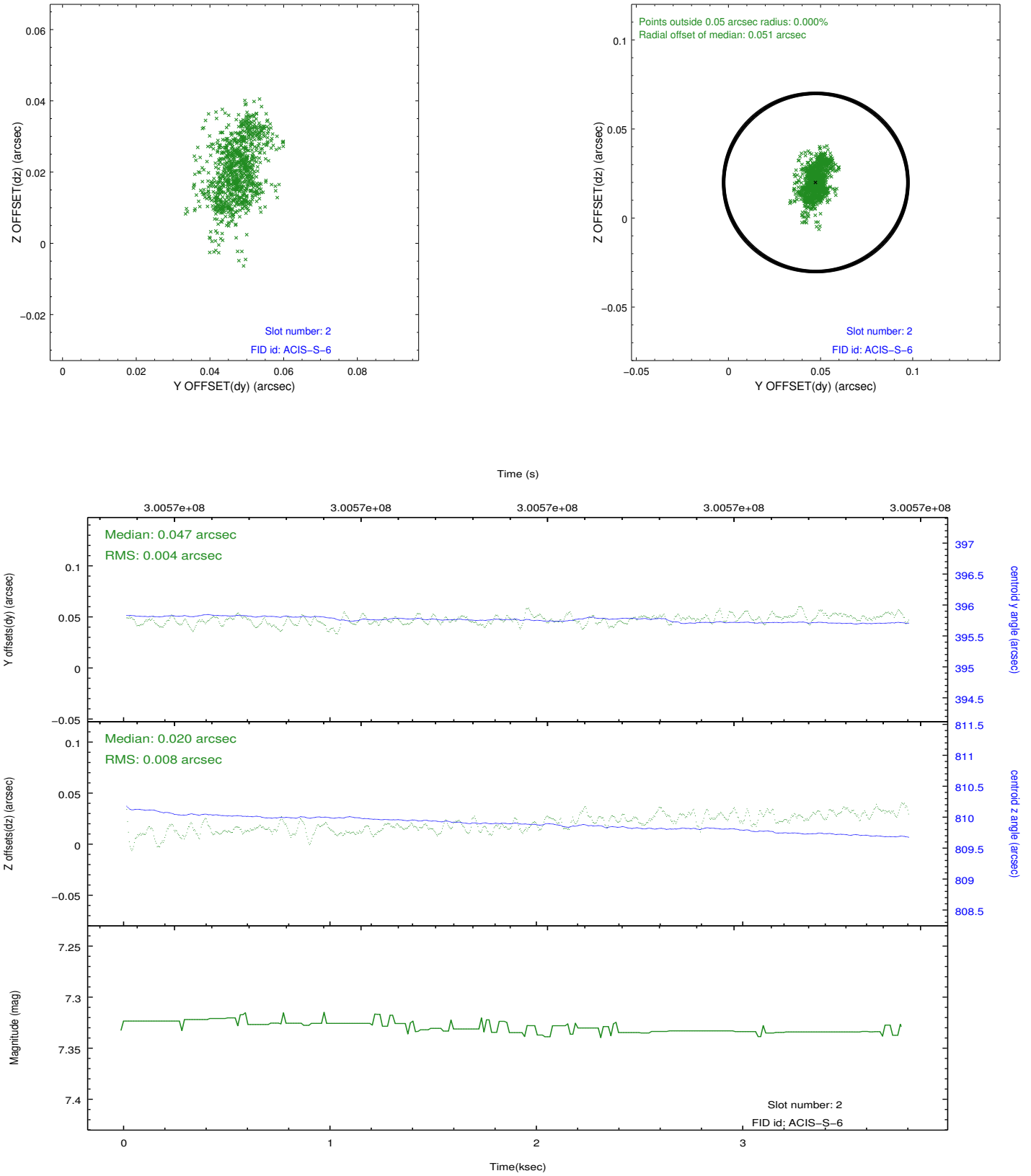
2.5.1 Slot 0



2.5.2 Slot 1



2.5.3 Slot 2



A Summary

A.1 Status

V&V Scientist	Jen Lauer
V&V Date (YYYY-MM-DD)	2012.05.02
V&V Edition	1
V&V Disposition and Status	OK
V&V Charge Time	3.78559998

A.2 Comments

A spatial region of the original bias map for CCD = 8 suffered from anomalously high data values. Pixels in the event data that were bias-corrected by one of the original affected bias pixels may have an apparent energy shift. While the change in energy is expected to be small (~ 20 eV), it depends on many parameters that have not yet been fully explored for this bias anomaly. The bias map for CCD = 8 has been reconstructed for this processing to remove this anomaly using scaled data from a comparable bias map from another observation. The pixels affected by the anomaly are bounded by sky coords:
(29.71205,24.73519), (29.71320,24.73180), (29.74983,24.74203), (29.74868,24.74542)