

# V&V Reference Report

## L2 ASCDS Version : 8.4.5

Observation 754 - L2 Version 4  
Chandra X-Ray Center

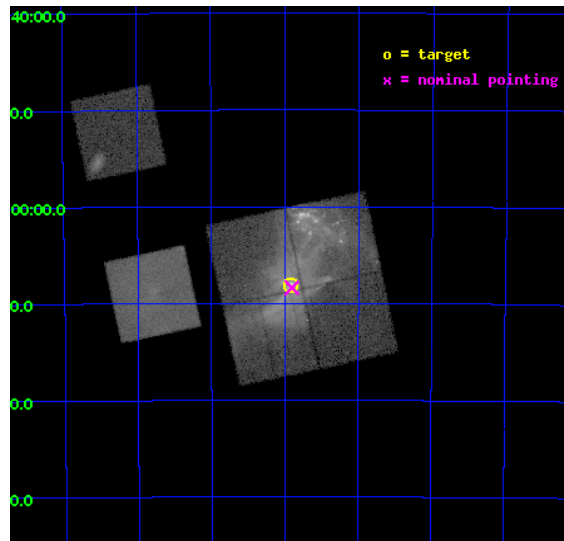
L2 Processing Date : Aug 31 2012

## Contents

<b>1</b>	<b>Front</b>	<b>2</b>
<b>2</b>	<b>OBI</b>	<b>3</b>
2.1	OBI . . . . .	3
2.1.1	Images . . . . .	3
2.1.2	Bias . . . . .	3
2.1.3	Parameters . . . . .	4
2.1.4	Events . . . . .	4
2.2	Compared Parameters . . . . .	5
2.3	Aspect . . . . .	6
2.4	Star Slots . . . . .	9
2.4.1	Slot 3 . . . . .	9
2.4.2	Slot 4 . . . . .	10
2.4.3	Slot 5 . . . . .	11
2.4.4	Slot 6 . . . . .	12
2.4.5	Slot 7 . . . . .	13
2.5	FID Slots . . . . .	14
2.5.1	Slot 0 . . . . .	14
2.5.2	Slot 1 . . . . .	15
2.5.3	Slot 2 . . . . .	16
<b>A</b>	<b>Summary</b>	<b>17</b>
A.1	Status . . . . .	17
A.2	Comments . . . . .	17

# 1 Front

seq_num	500050	Sequence number
obs_id	754	Observation id
title	AXAF OBSERVATIONS OF THE YOUNG, ENERGETIC RADIO PULSAR PSR B1509-58	&#160
observer	Dr. Victoria Kaspi	Principal investigator
object	G320.4-1.2	Source name
dtcycle	0	&#160
cycle	P	events from which exps? Prim/Second/Both
ra_targ	228.481667	Observer's specified target RA [deg]
dec_targ	-59.135806	Observer's specified target Dec [deg]
ra_nom	228.47618350135	Nominal RA [deg]
dec_nom	-59.139818345073	Nominal Dec [deg]
roll_nom	257.86541596971	Nominal Roll [deg]
revision	4	Processing version of data
ontime	19280.000017941	Sum of GTIs [s]
livetime	19035.865048692	Livetime [s]
ontime0	19280.000017941	Sum of GTIs [s]
ontime1	19276.759027779	Sum of GTIs [s]
ontime2	19280.000017941	Sum of GTIs [s]
ontime3	19280.000017941	Sum of GTIs [s]
ontime7	19280.000017941	Sum of GTIs [s]
ontime9	19280.000017941	Sum of GTIs [s]
l2events	340562	Number of level 2 events

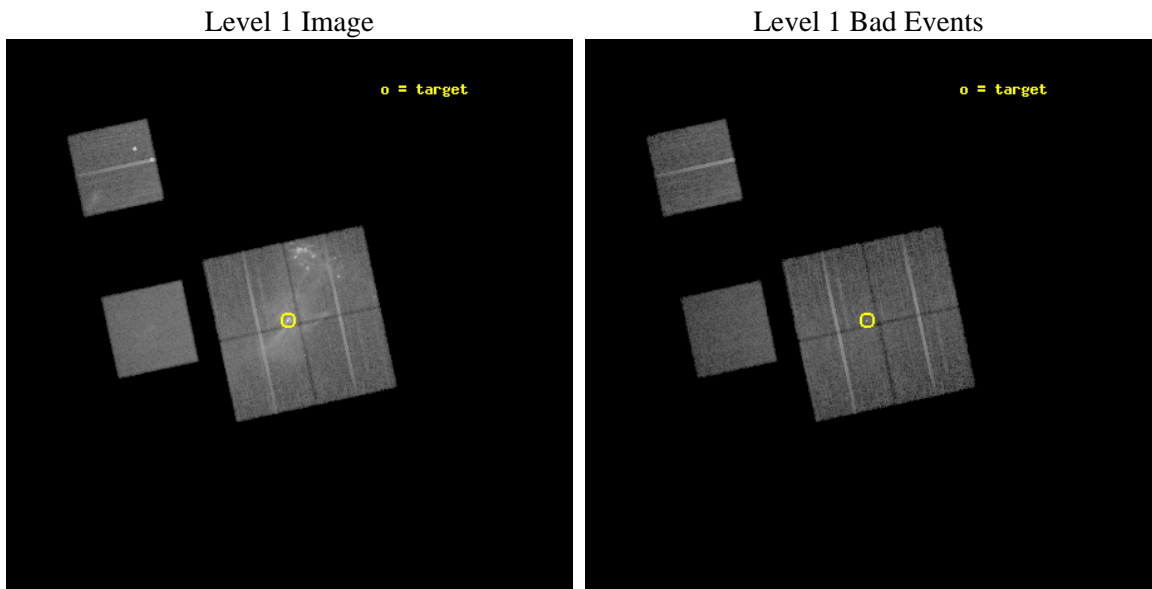




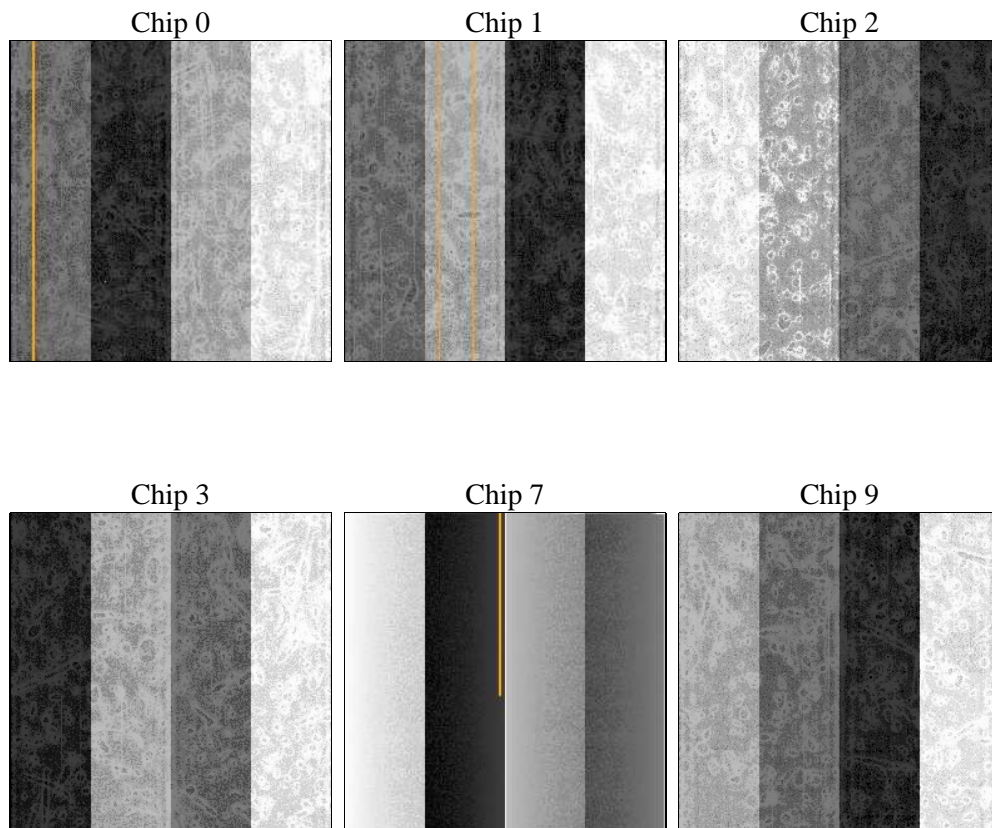
## 2 OBI

### 2.1 OBI

#### 2.1.1 Images



#### 2.1.2 Bias



### 2.1.3 Parameters

obi_num	0	Obi number	sched_exp_time	19325.000000	[s] Scheduled observation exposure time
ascdsver	8.4.5	Processing system revision	ontime	19280.000017941	Sum of GTIs [s]
caldsver	4.5.1.1	&#160	ontime0	19280.000017941	Sum of GTIs [s]
date	2012-08-31T14:27:58	Date and time of file creation	ontime1	19276.759027779	Sum of GTIs [s]
revision	4	Processing version of data	ontime2	19280.000017941	Sum of GTIs [s]
			ontime3	19280.000017941	Sum of GTIs [s]
			ontime7	19280.000017941	Sum of GTIs [s]
			ontime9	19280.000017941	Sum of GTIs [s]
			l1events	946563	Number of level 1 events

### 2.1.4 Events

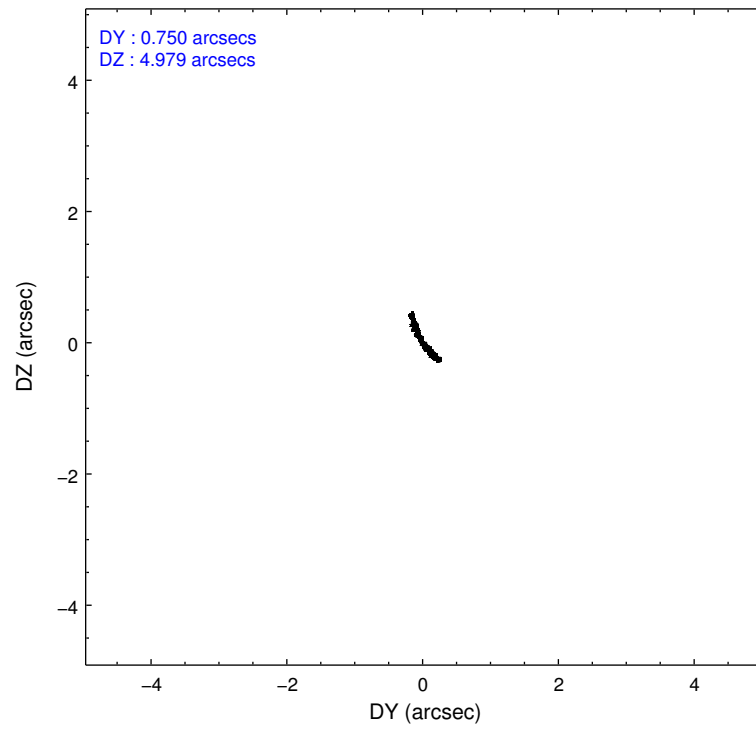
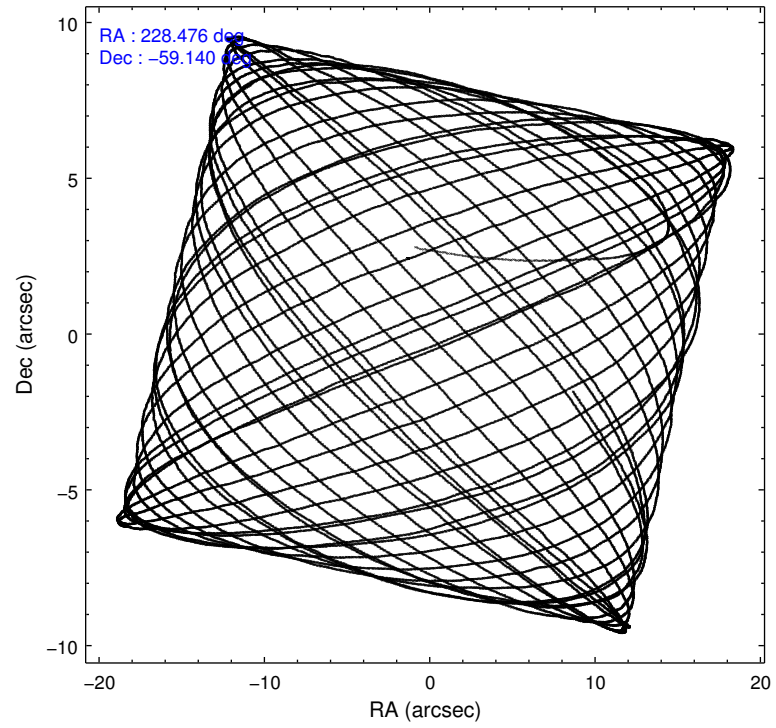
	ccd 0	ccd 1	ccd 2	ccd 3	ccd 7	ccd 9		ccd 0	ccd 1	ccd 2	ccd 3	ccd 7	ccd 9
level 1 events	115903	198395	170341	178563	148293	135068	grade 0 events	15143	78318	48177	49301	9250	14621
rejected events	88735	92953	100879	105547	77792	103780		13%	39%	28%	27%	6%	10%
rejected %	76%	46%	59%	59%	52%	76%	grade 1 events	103	295	223	823	151	124
								0%	0%	0%	0%	0%	0%
							grade 2 events	5235	13170	9871	10935	14928	10430
								4%	6%	5%	6%	10%	7%
							grade 3 events	1623	4342	3105	3424	6897	1383
								1%	2%	1%	1%	4%	1%
							grade 4 events	1593	4094	3311	3396	6843	1405
								1%	2%	1%	1%	4%	1%
							grade 5 events	3681	4135	3761	5037	12922	4672
								3%	2%	2%	2%	8%	3%
							grade 6 events	3581	5549	5024	5977	32606	3459
								3%	2%	2%	3%	21%	2%
							grade 7 events	84944	88492	96869	99670	64696	98974
								73%	44%	56%	55%	43%	73%

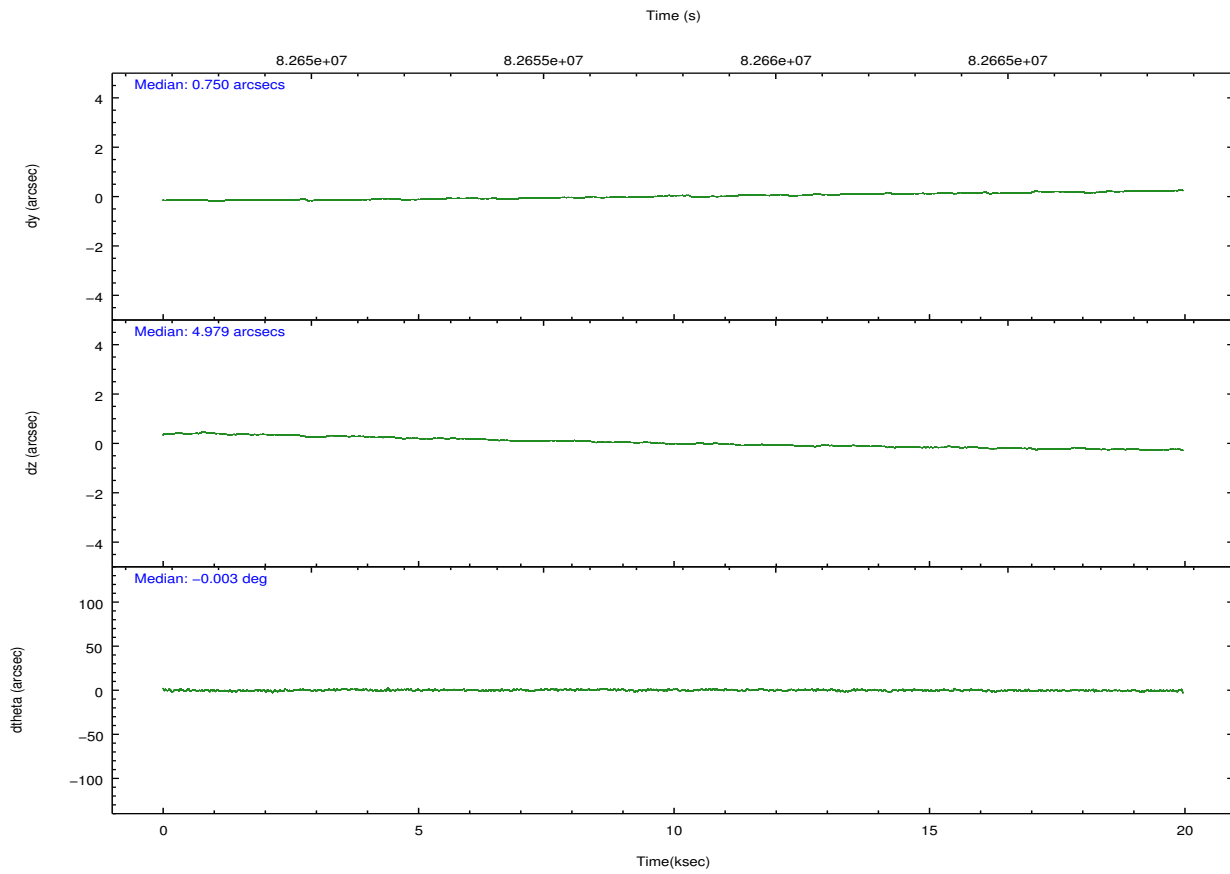
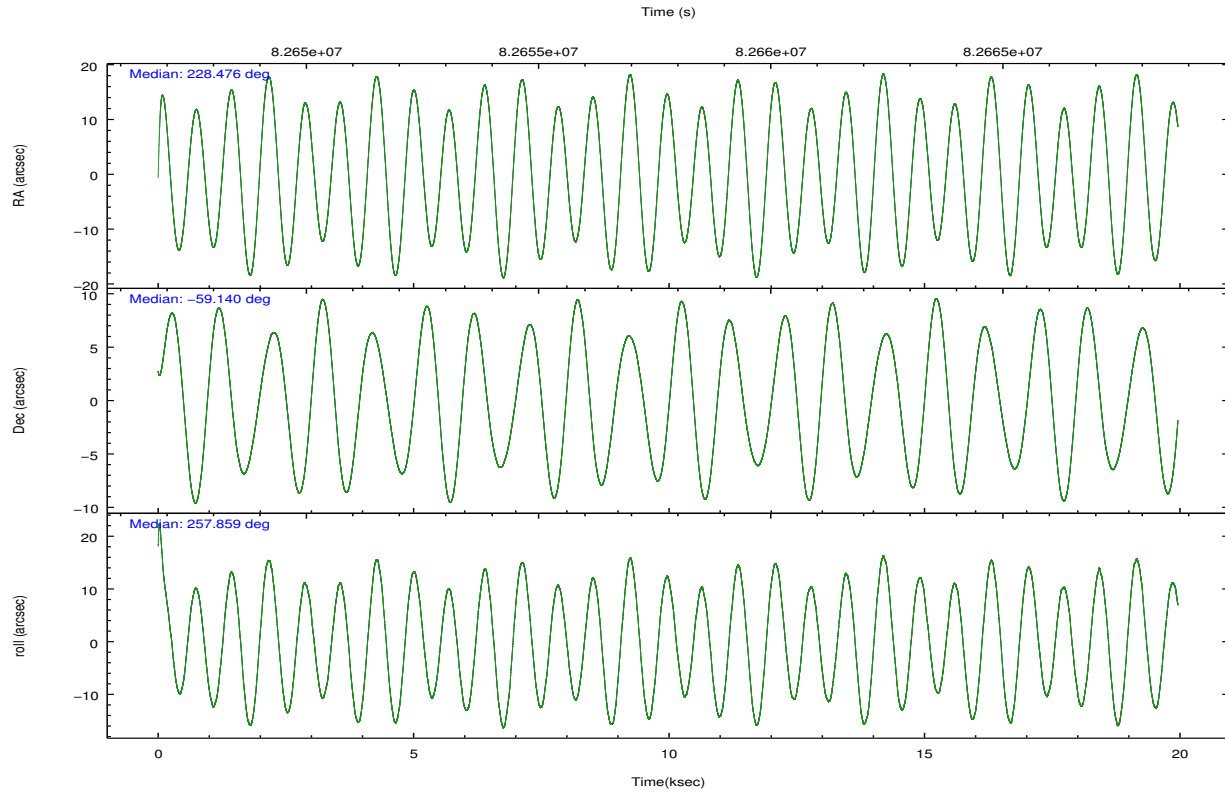
## 2.2 Compared Parameters

Parameter	Planned	Actual
Instrument	ACIS	ACIS
Detector	ACIS-012379	ACIS-012379
Grating	NONE	NONE
Data mode	FAINT	FAINT
Observation mode	POINTING	POINTING
[deg] Pointing RA	228.459904	228.4761835013477
[deg] Pointing Dec	-59.113579	-59.13981834507334
[deg] Pointing Roll	257.642743	257.8654159697125
[mm] SIM focus pos	-0.782348	-0.7809083437167272
[mm] SIM defocus	0	0.001439871863259334
[mm] SIM translation stage pos	-232.092463	-232.1014741176067
[mm] SIM translation stage offset	-1.5	-1.49097888532296
[s] Observation start time (MET)	82648444.184000	82647171.932606
Observation start date	2000-08-14T13:53:00	2000-08-14T13:32:51
[s] Observation end time (MET)	82667769.184000	82668246.445895
Observation end date	2000-08-14T19:15:05	2000-08-14T19:24:06
Read mode	TIMED	TIMED

Parameter	Planned	Actual
Obspar format version number	7	7
Obspar file type	PREDICTED	ACTUAL
Obspar update status	NONE	UPDATED
Number of optional ACIS chips dropped	0	0
On-chip summing requested	N	N
Subarray requested	NONE	NONE
Alternating exposures requested	N	N
[s] Primary exposure time	0.000000	3.2

## 2.3 Aspect



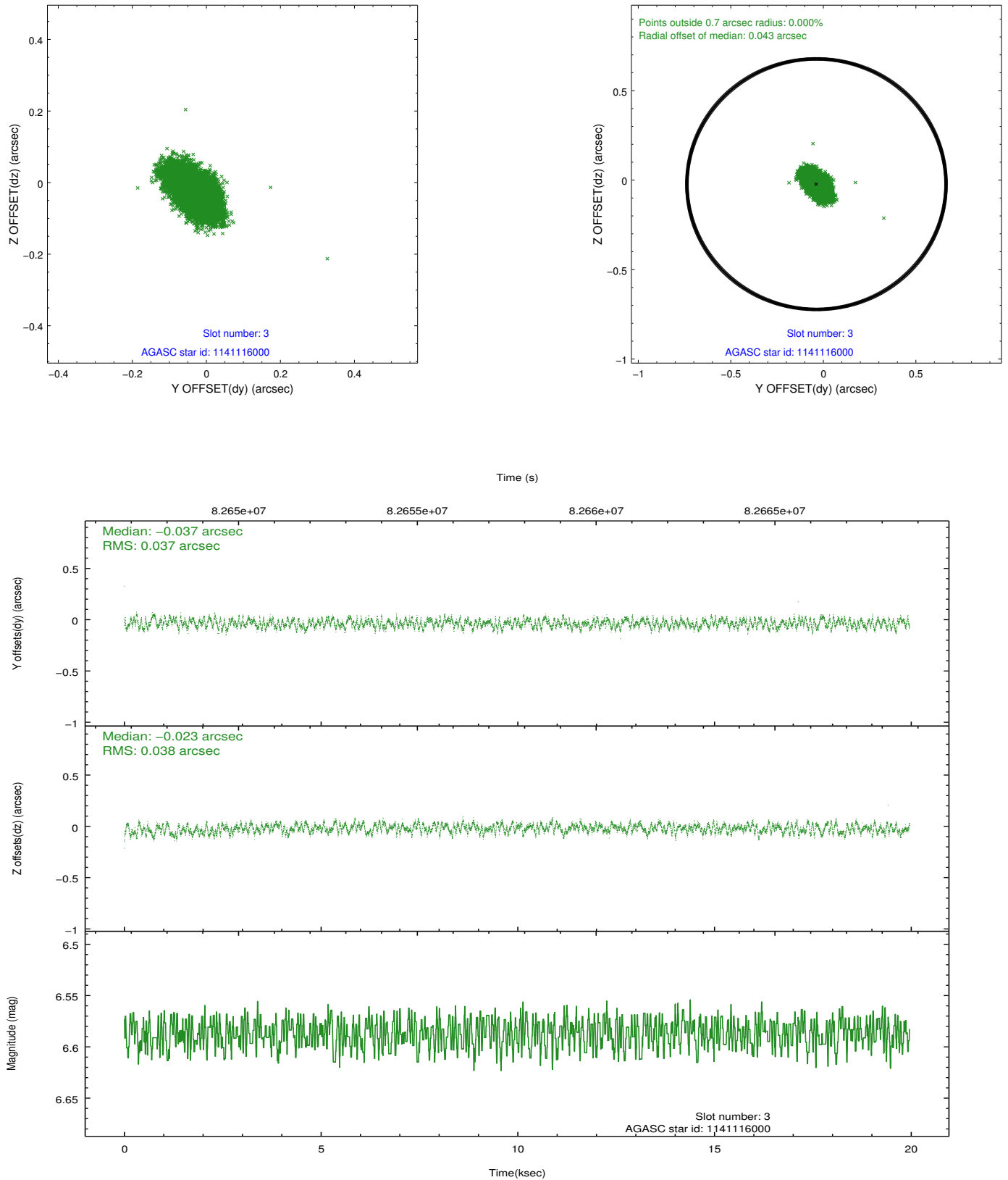


### Slot Statistics

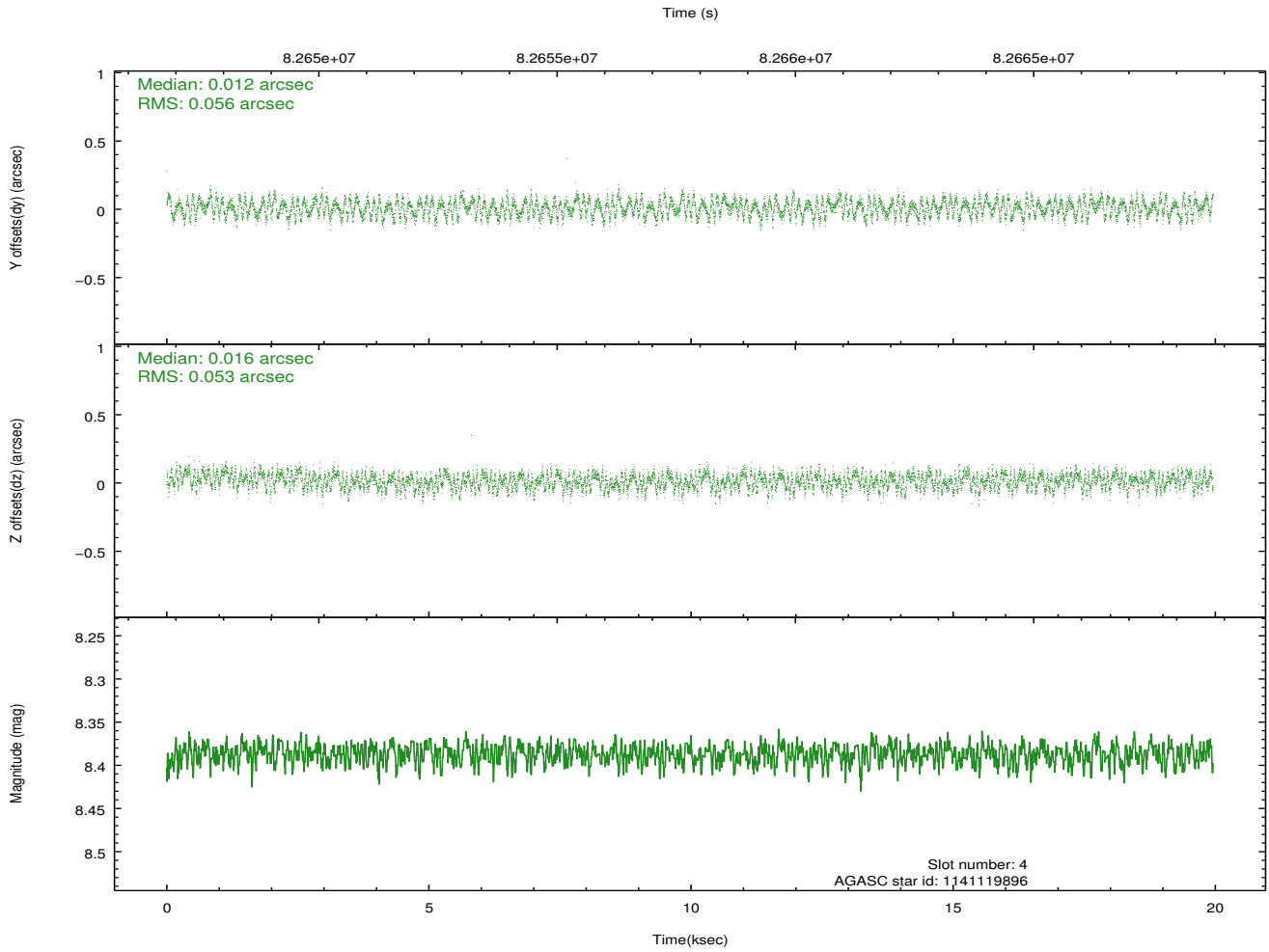
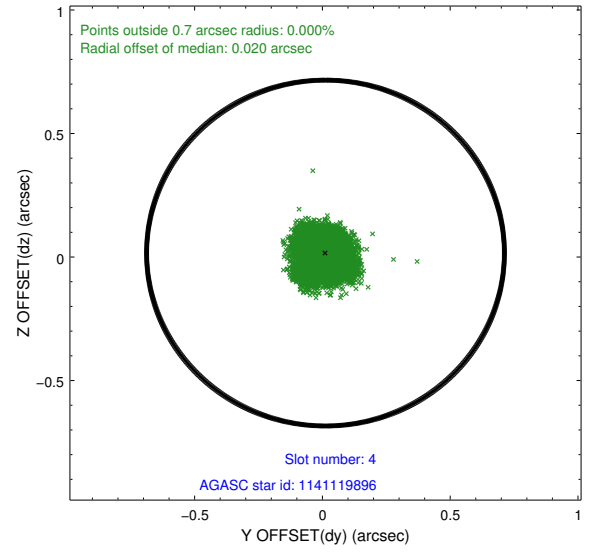
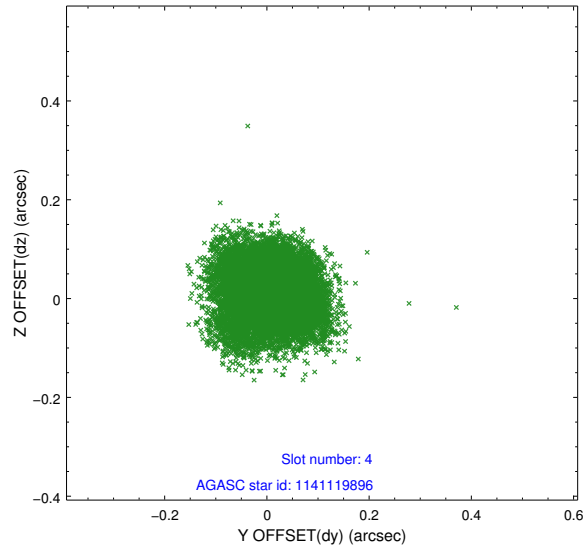
slot	status	id	mag	n_pts	med_dy	med_dz	dr1	dr2	ra	dec	mean_y	mean_z
0	FID	ACIS-I-2	7.15	4869	-0.032	-0.043	0.010	0.029	0.000000	0.000000	-755.21	-865.10
1	FID	ACIS-I-4	7.18	4869	-0.049	0.038	0.009	0.033	0.000000	0.000000	2158.72	1041.08
2	FID	ACIS-I-5	7.23	4869	-0.021	0.074	0.011	0.020	0.000000	0.000000	-1808.72	1038.95
3	GUIDE	1141116000	6.59	9737	-0.037	-0.023	0.057	0.092	227.224564	-59.142142	610.52	-2201.51
4	GUIDE	1141119896	8.39	9738	0.012	0.016	0.084	0.127	229.637327	-59.405643	584.93	2336.18
5	GUIDE	1141116568	8.54	9737	-0.080	0.097	0.053	0.088	228.578452	-58.520066	-2133.55	-239.45
6	GUIDE	1141118720	9.46	9734	0.191	0.005	0.097	0.155	227.772709	-59.614232	2035.86	-835.08
7	GUIDE	1141118800	9.51	9733	-0.087	-0.092	0.083	0.138	228.802182	-58.730777	-1480.25	329.84

## 2.4 Star Slots

### 2.4.1 Slot 3

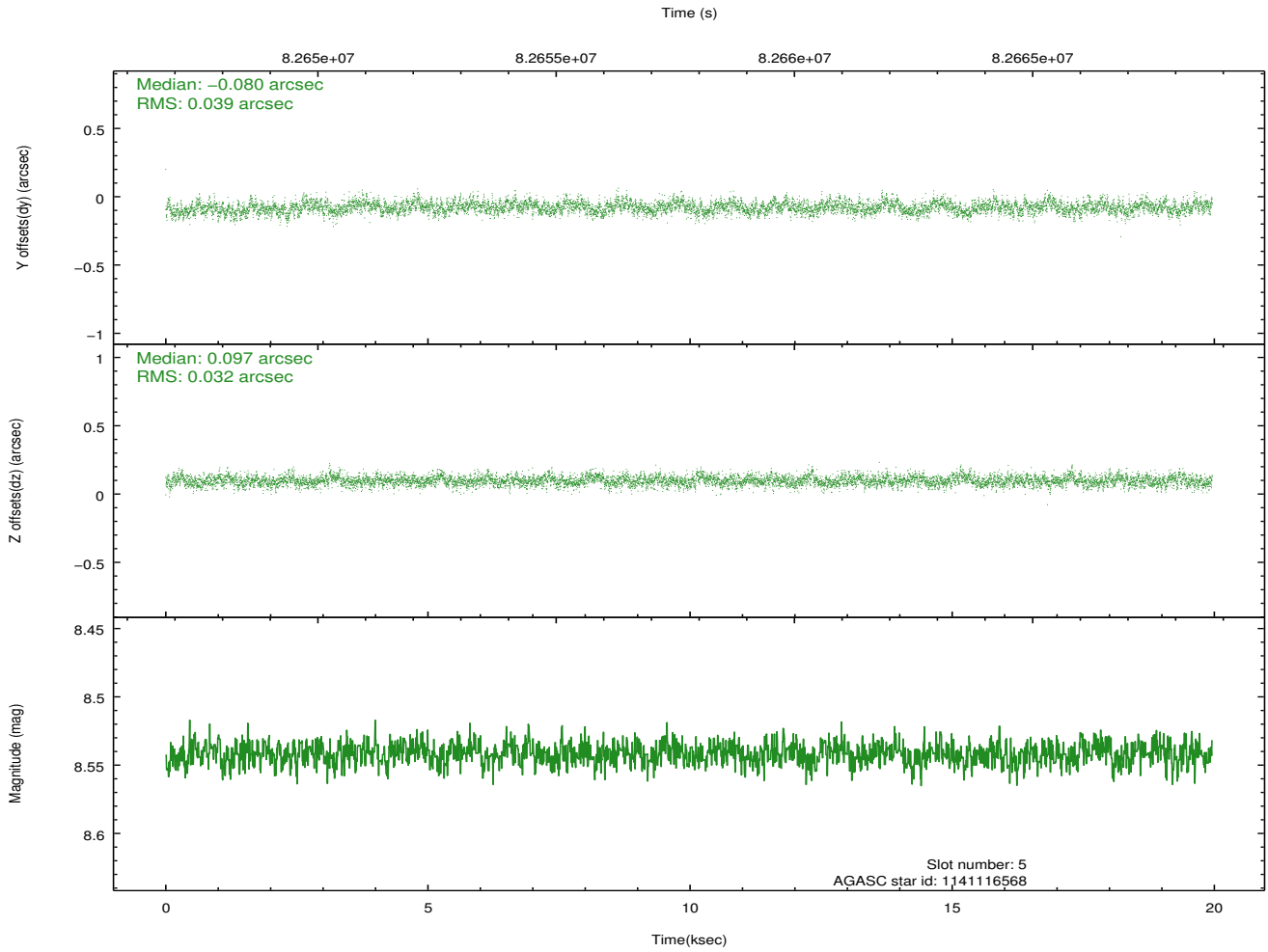
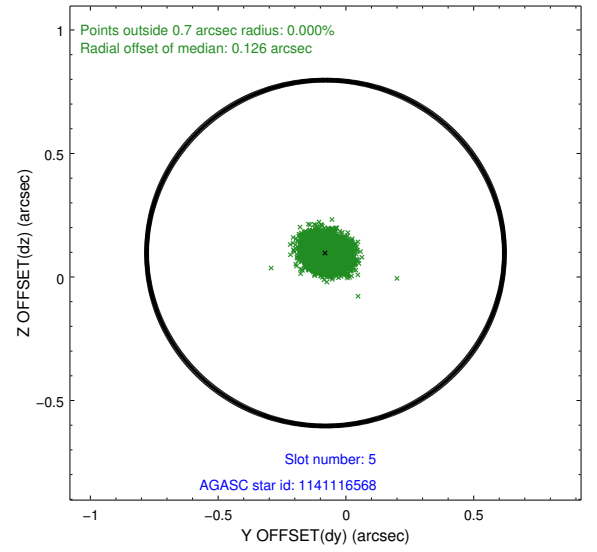
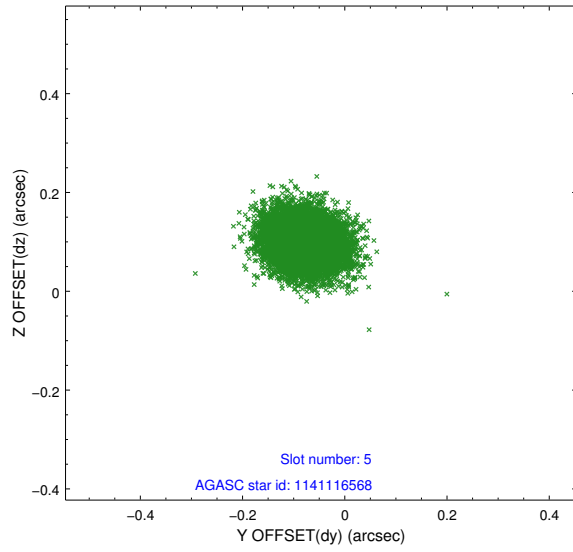


## 2.4.2 Slot 4

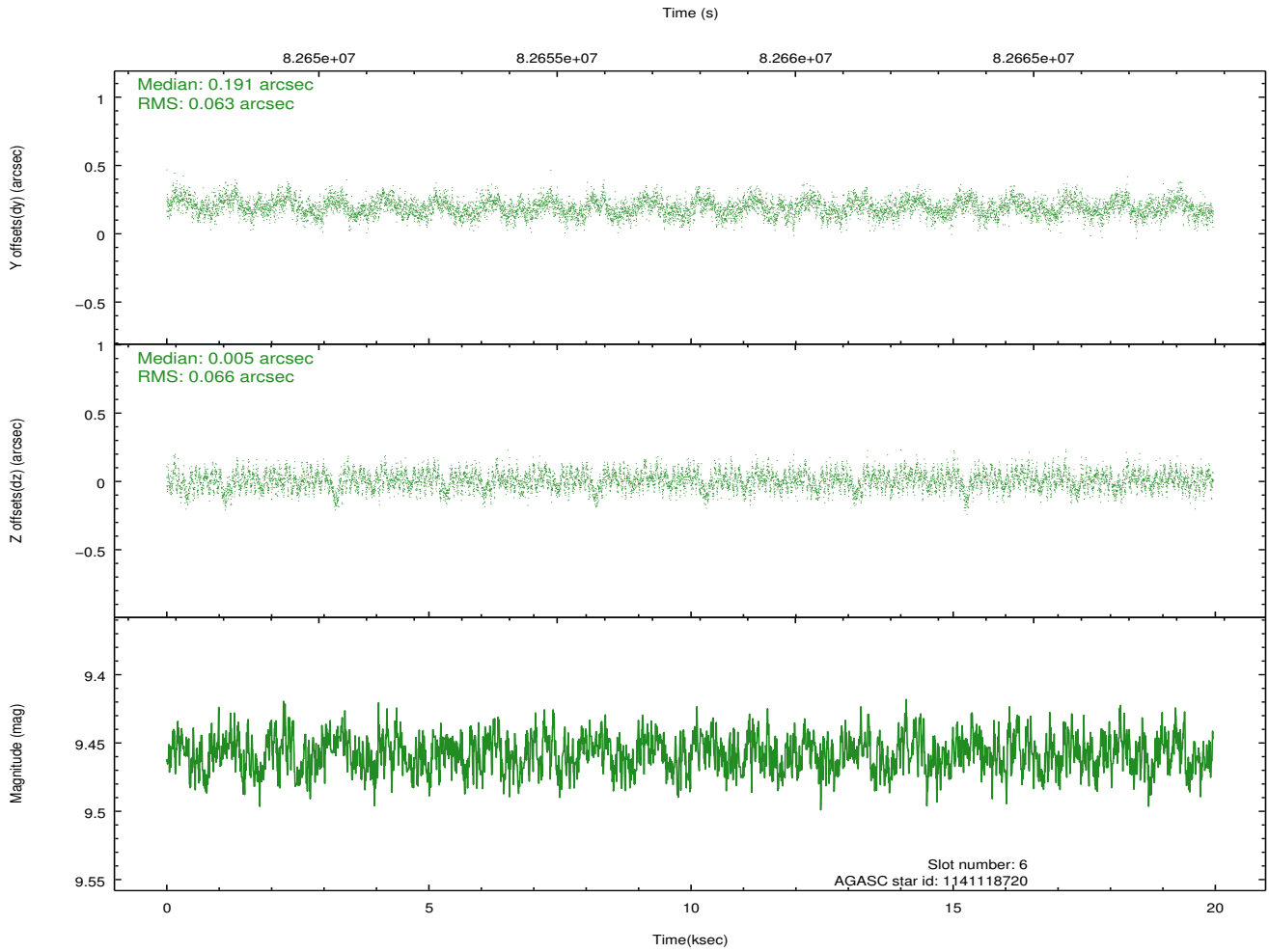
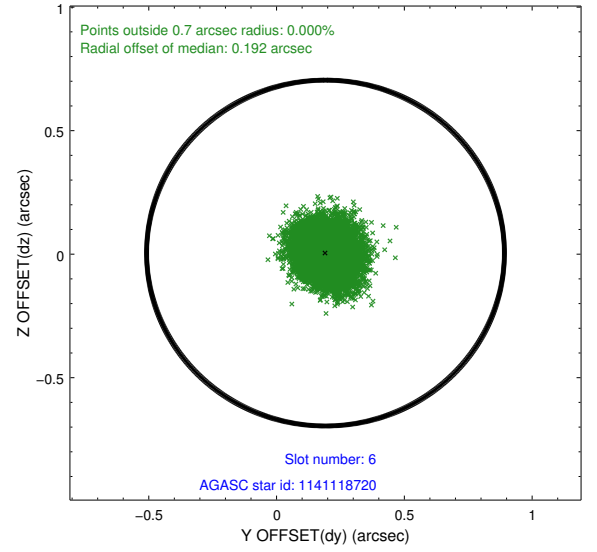
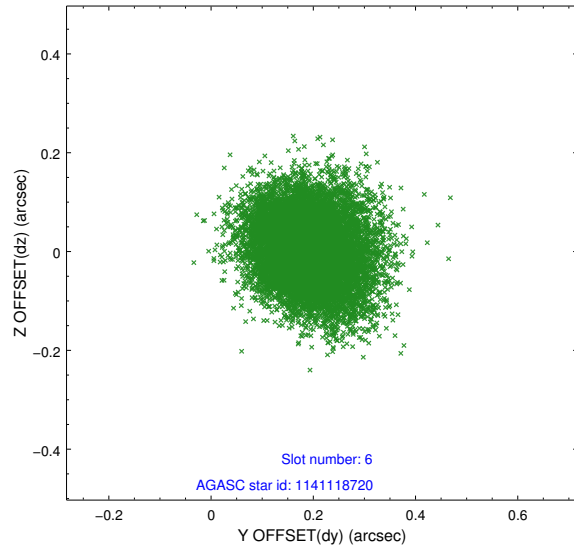




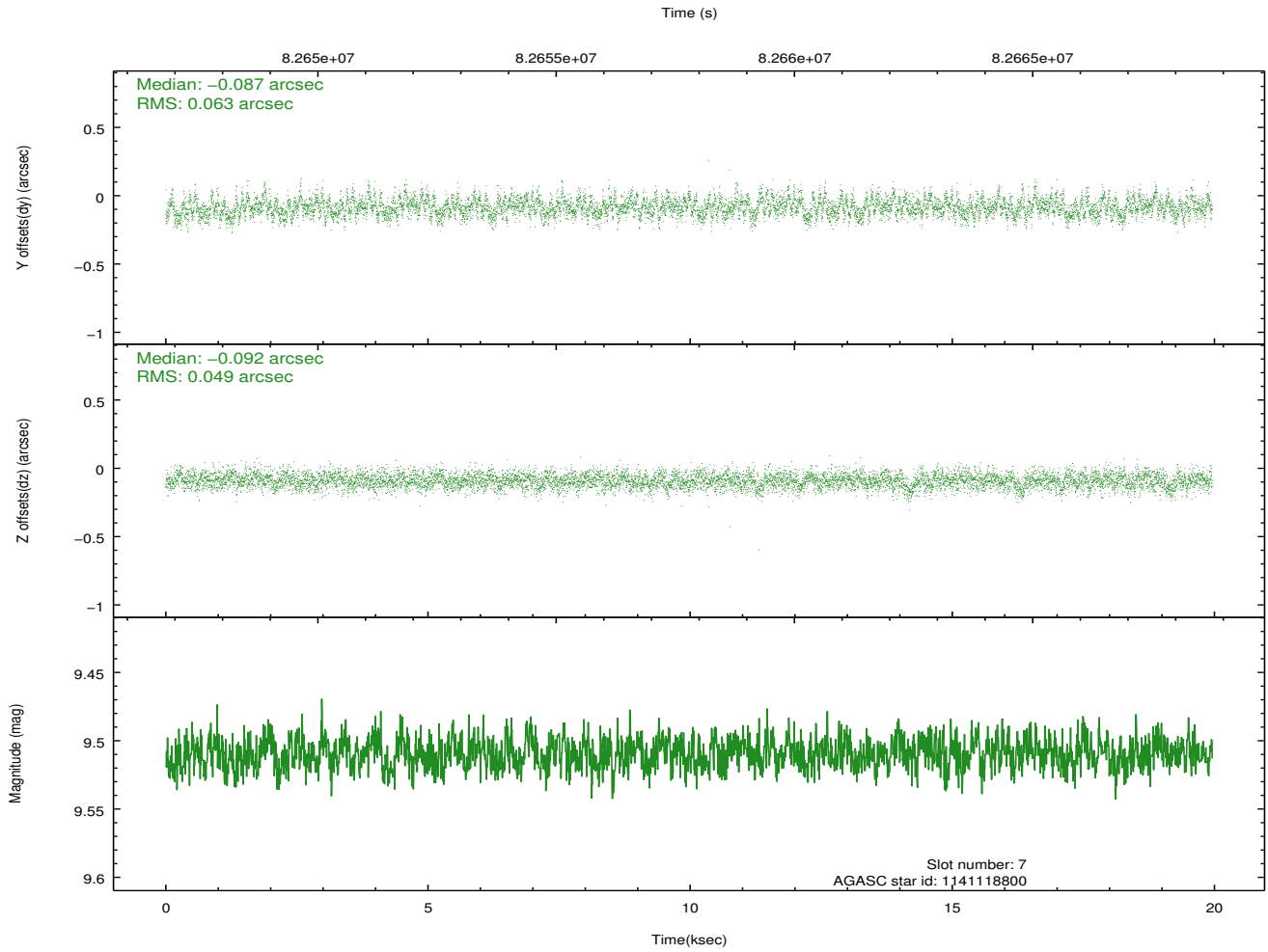
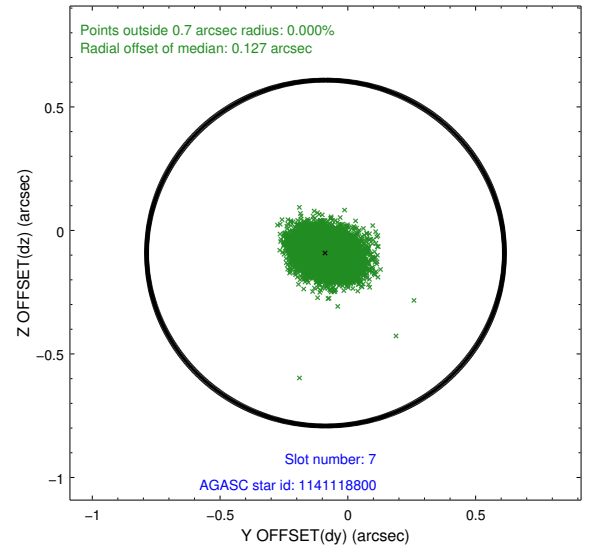
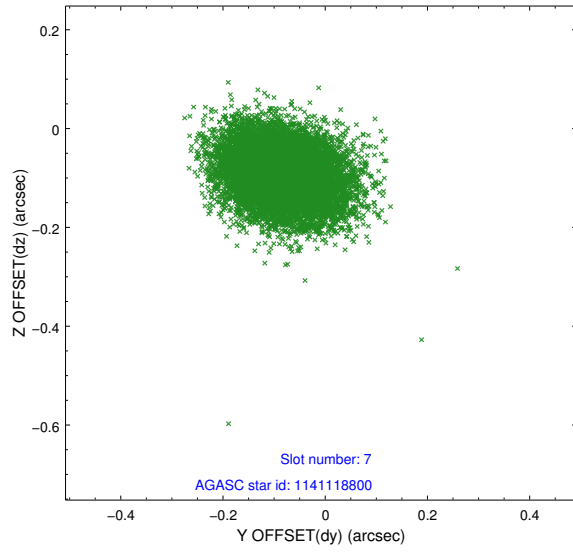
### 2.4.3 Slot 5



## 2.4.4 Slot 6

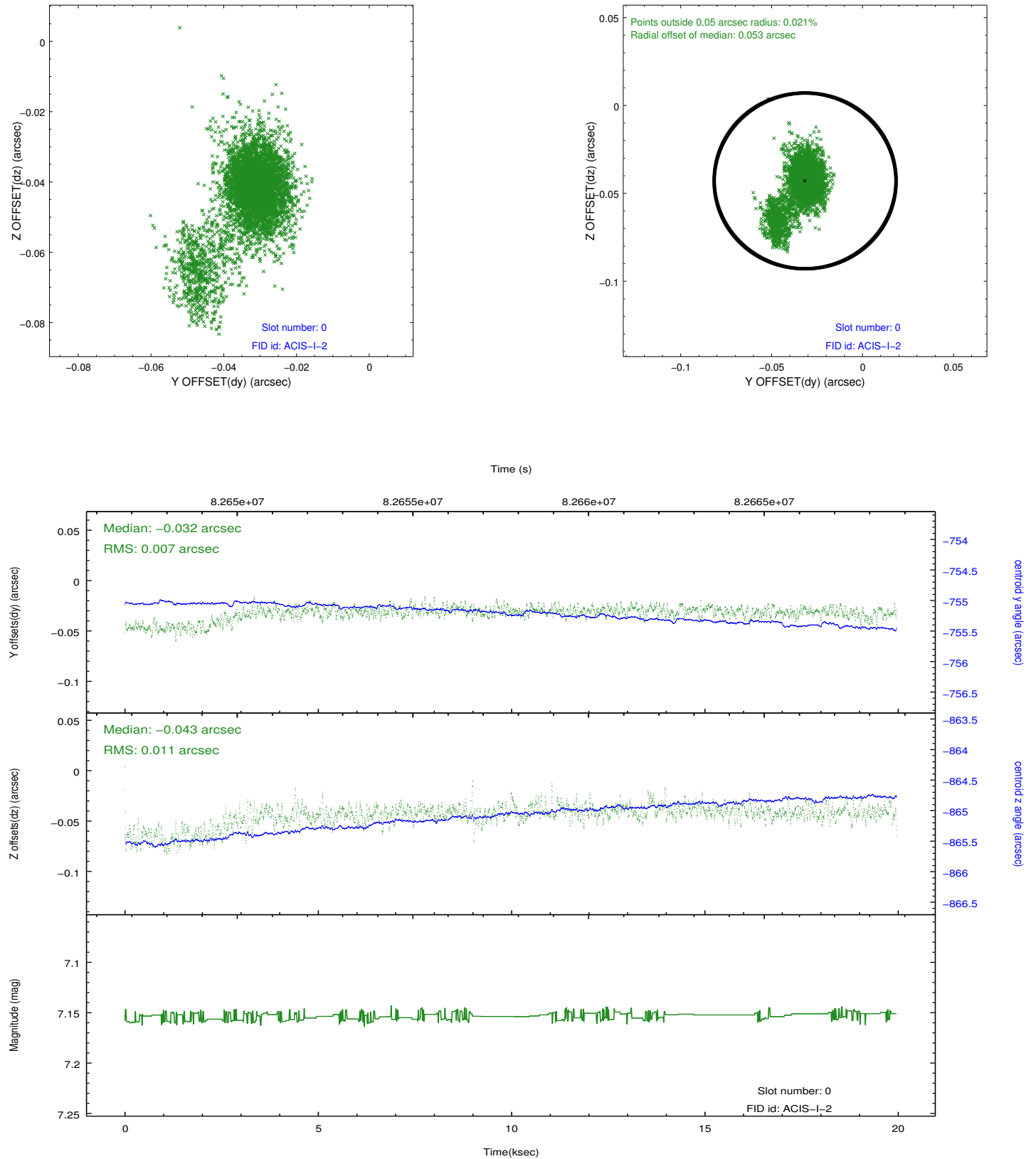


## 2.4.5 Slot 7

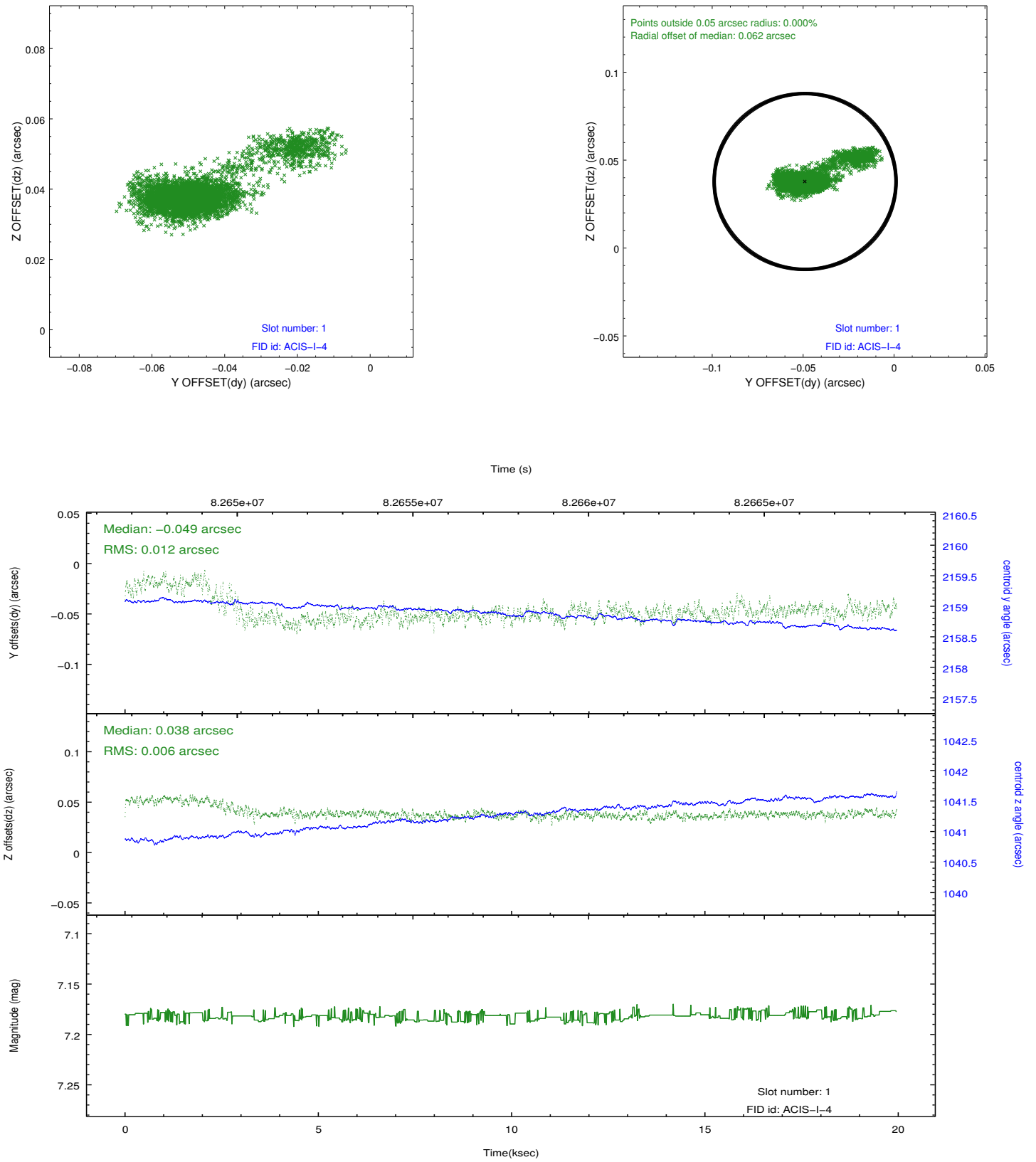


## 2.5 FID Slots

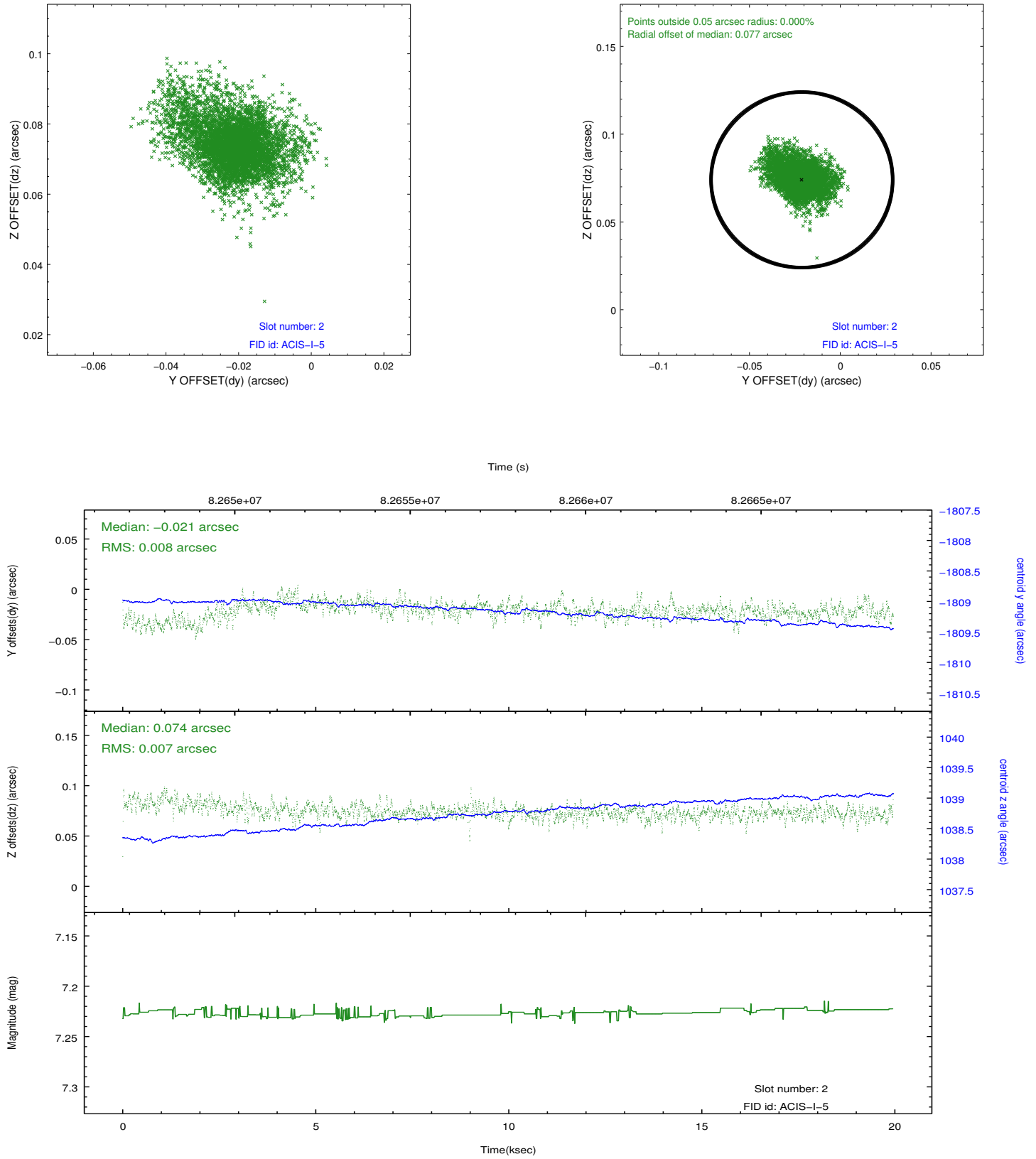
### 2.5.1 Slot 0



## 2.5.2 Slot 1



### 2.5.3 Slot 2



## A Summary

### A.1 Status

V&V Scientist	Jen Lauer
V&V Date (YYYY-MM-DD)	2012.09.06
V&V Edition	1
V&V Disposition and Status	OK
V&V Charge Time	19.2832

### A.2 Comments