

# V&V Reference Report

## L2 ASCDS Version : 7.6.10

Observation 734 - L2 Version 001  
Chandra X-Ray Center

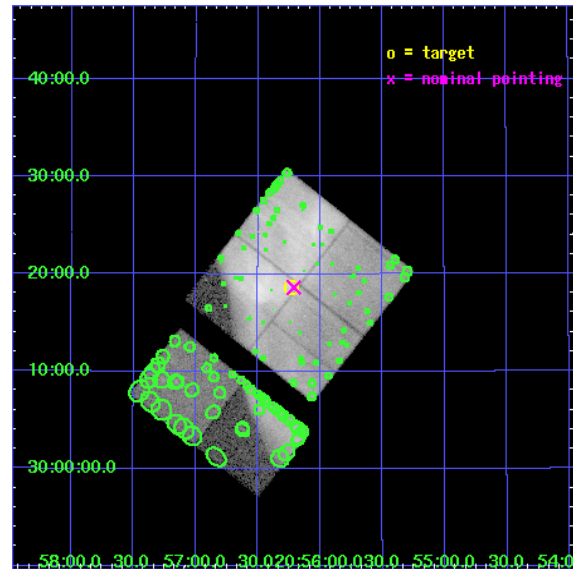
L2 Processing Date : Jun 6 2007

## Contents

<b>1</b>	<b>Front</b>	<b>2</b>
<b>2</b>	<b>OBI</b>	<b>3</b>
2.1	OBI . . . . .	3
2.1.1	Images . . . . .	3
2.1.2	Bias . . . . .	3
2.1.3	Parameters . . . . .	4
2.1.4	Events . . . . .	4
2.2	Compared Parameters . . . . .	5
2.3	Aspect . . . . .	6
2.4	Star Slots . . . . .	9
2.4.1	Slot 3 . . . . .	9
2.4.2	Slot 4 . . . . .	10
2.4.3	Slot 5 . . . . .	11
2.4.4	Slot 6 . . . . .	12
2.4.5	Slot 7 . . . . .	13
2.5	FID Slots . . . . .	14
2.5.1	Slot 0 . . . . .	14
2.5.2	Slot 1 . . . . .	15
2.5.3	Slot 2 . . . . .	16
<b>3</b>	<b>Point Sources</b>	<b>17</b>
<b>A</b>	<b>Summary</b>	<b>18</b>
A.1	Status . . . . .	18
A.2	Comments . . . . .	18

# 1 Front

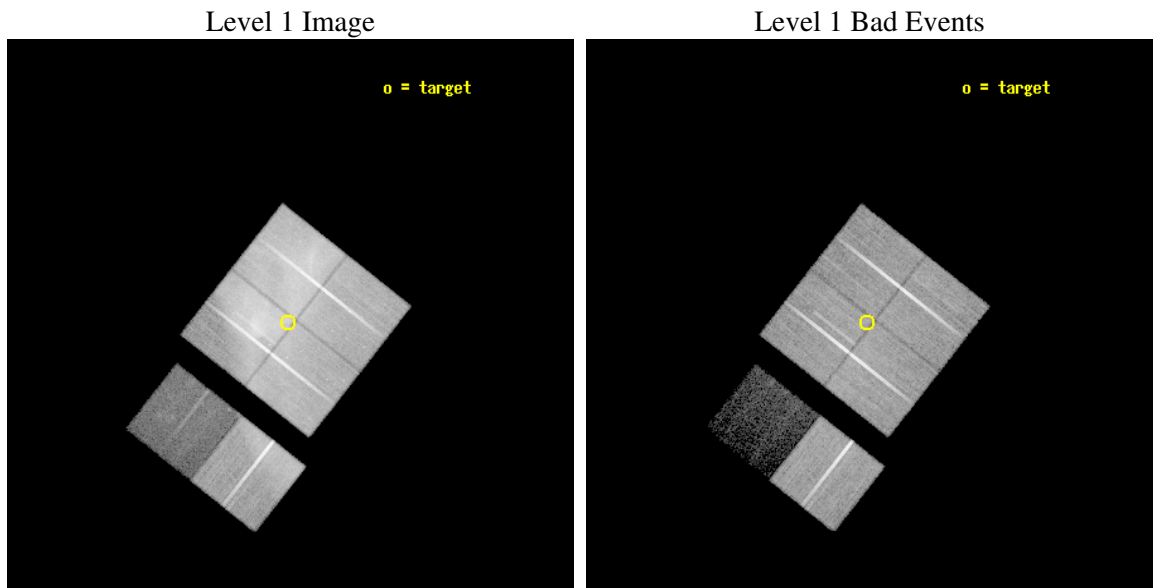
seq_num	500030
obs_id	734
title	BLAST WAVE DYNAMICS, SUPERNOVA REMNANT ENVIRONMENTS, AND THE EVOLUTION OF THE CYGNUS LOOP
observer	Dr. James Graham
object	CYGNUS LOOP SE
dtcycle	0
cycle	P
ra_targ	314.058333
dec_targ	30.311667
ra_nom	314.05287298463
dec_nom	30.310381619953
roll_nom	218.26737781803
revision	2
ontime	47395.20004414
livetime	46795.053483218
ontime0	47395.20004414
ontime1	47395.20004414
ontime2	47388.718063831
ontime3	47395.20004414
ontime6	47395.20004414
ontime7	47395.20004414
l2events	802019



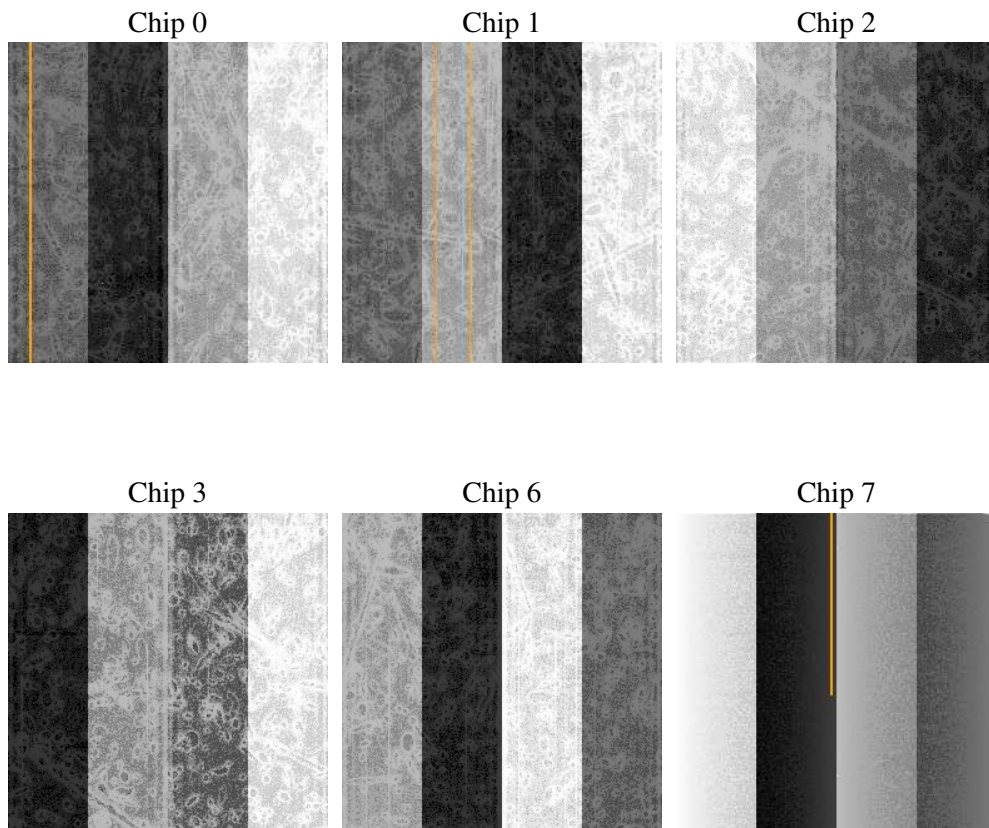
## 2 OBI

### 2.1 OBI

#### 2.1.1 Images



#### 2.1.2 Bias



### 2.1.3 Parameters

obi_num	0
ascdsver	7.6.10
caldsver	3.4.0
date	2007-06-06T14:26:07
revision	2

sched_exp_time	47300.000000
ontime	47395.20004414
ontime0	47395.20004414
ontime1	47395.20004414
ontime2	47388.718063831
ontime3	47395.20004414
ontime6	47395.20004414
ontime7	47395.20004414
l1events	1794318

### 2.1.4 Events

	ccd 0	ccd 1	ccd 2	ccd 3	ccd 6	ccd 7
level 1 events	301938	455599	332540	395671	249103	59467
rejected events	176177	165049	196182	187479	191125	16337
rejected %	58%	36%	58%	47%	76%	27%

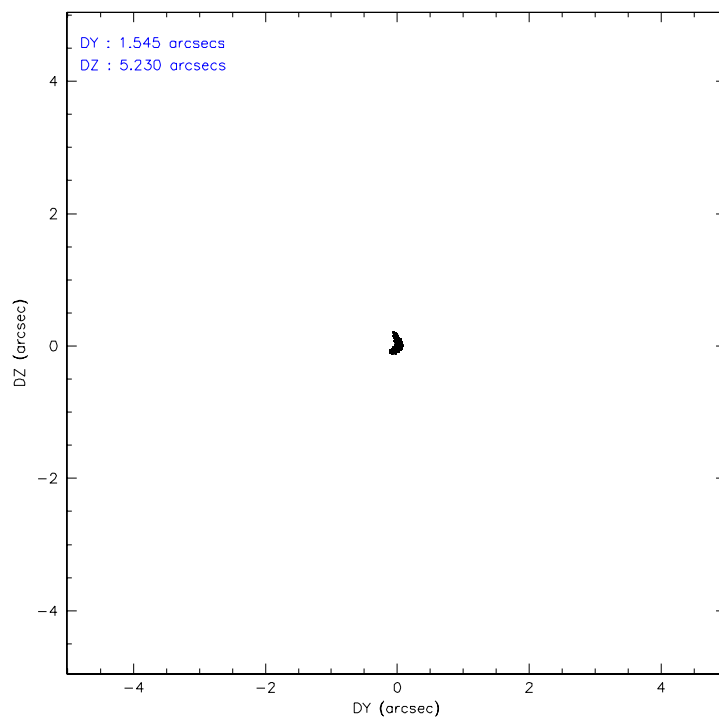
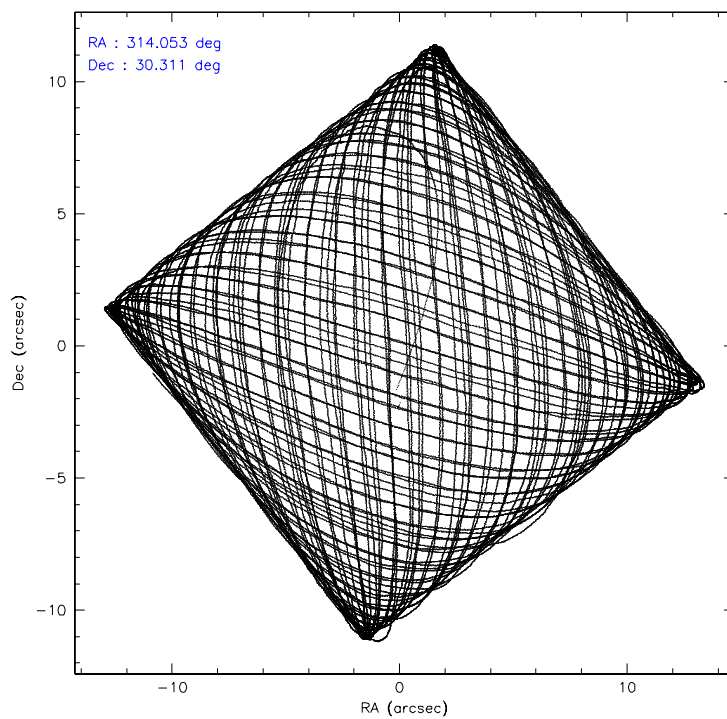
	ccd 0	ccd 1	ccd 2	ccd 3	ccd 6	ccd 7
grade 0 events	108911	261174	119738	188774	47962	9240
	36%	57%	36%	47%	19%	15%
grade 1 events	428	984	472	767	196	175
	0%	0%	0%	0%	0%	0%
grade 2 events	9189	17716	9386	11865	4519	11545
	3%	3%	2%	2%	1%	19%
grade 3 events	2880	4506	2614	2861	1993	5132
	0%	0%	0%	0%	0%	8%
grade 4 events	2781	4493	2711	2897	1869	4844
	0%	0%	0%	0%	0%	8%
grade 5 events	1616	2038	1499	1869	1646	4386
	0%	0%	0%	0%	0%	7%
grade 6 events	2012	2679	1921	1814	1637	12371
	0%	0%	0%	0%	0%	20%
grade 7 events	174121	162009	194199	184824	189281	11774
	57%	35%	58%	46%	75%	19%

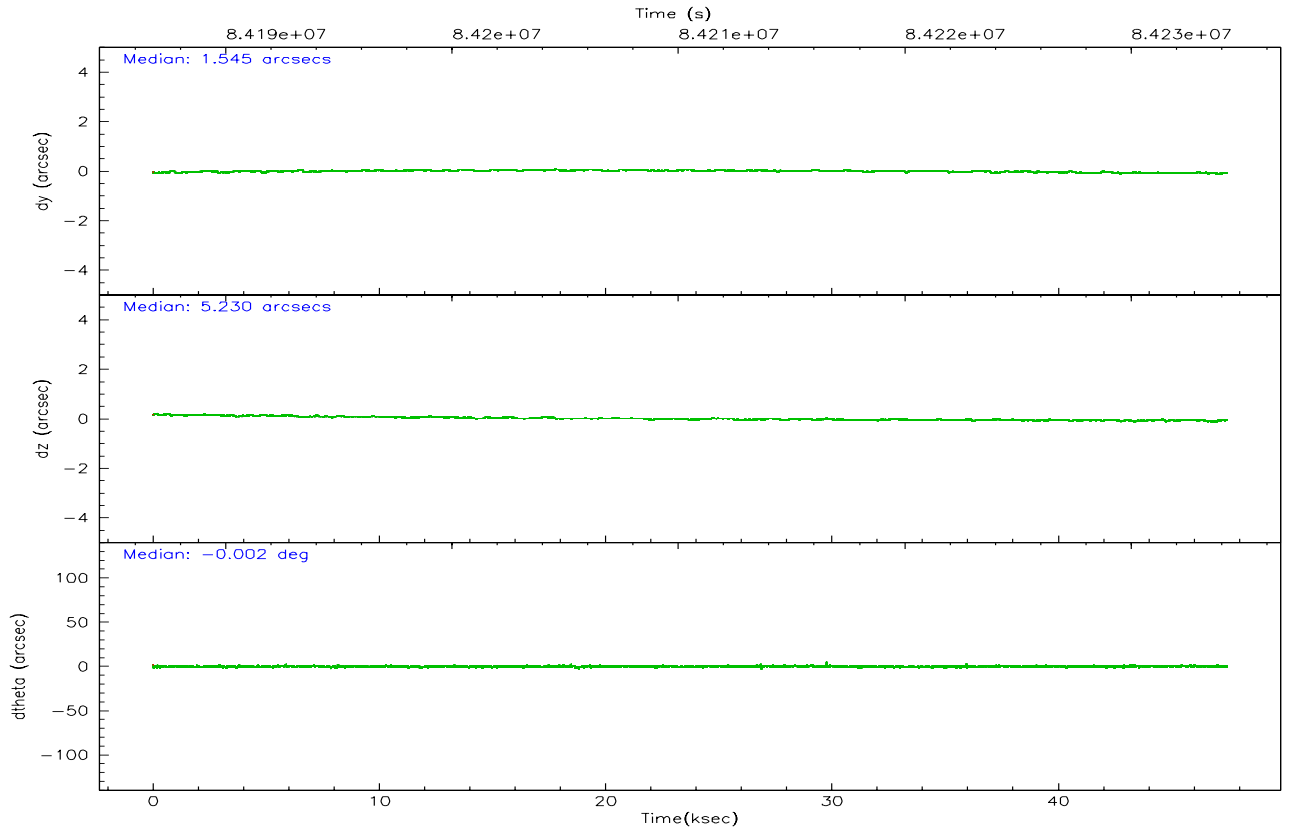
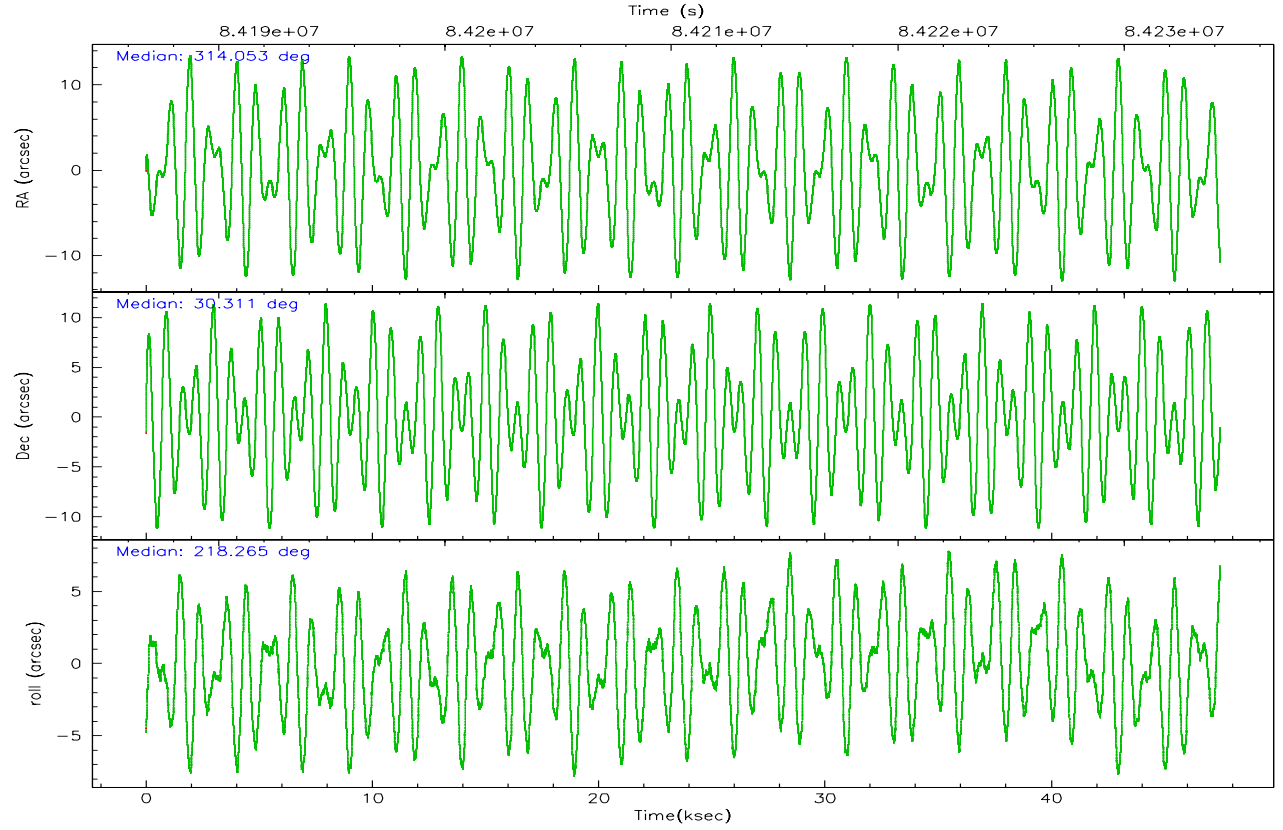


## 2.2 Compared Parameters

Parameter	Planned	Actual	Parameter	Planned	Actual
Instrument	ACIS	ACIS	Obspar format version number	6	6
Detector	ACIS-012367	ACIS-012367	Obspar file type	PREDICTED	ACTUAL
Grating	NONE	NONE	Obspar update status	NONE	UPDATED
Data mode	FAINT	FAINT	Number of optional ACIS chips dropped	0	0
Observation mode	POINTING	POINTING	On-chip summing requested	N	N
Pointing RA	314.064780	314.0528729846304	Subarray requested	NONE	NONE
Pointing Dec	30.335921	30.31038161995292	Alternating exposures requested	N	N
Pointing Roll	218.052681	218.2673778180289	Primary exposure time	3.200000	3.2
SIM focus pos (mm)	-0.782348	-0.7809083437167272			
SIM defocus (mm)	0	0.001439871863259334			
SIM translation stage pos (mm)	-233.592463	-233.5874344608287			
SIM translation stage offset (mm)	0	-0.005018542100998502			
Observation start time	84186946.184000	84185915.82780901			
Observation start date	2000-09-01T09:14:42	2000-09-01T08:58:35			
Observation end time	84234246.184000	84235048.69215401			
Observation end date	2000-09-01T22:23:02	2000-09-01T22:37:28			
Read mode	TIMED	TIMED			

## 2.3 Aspect



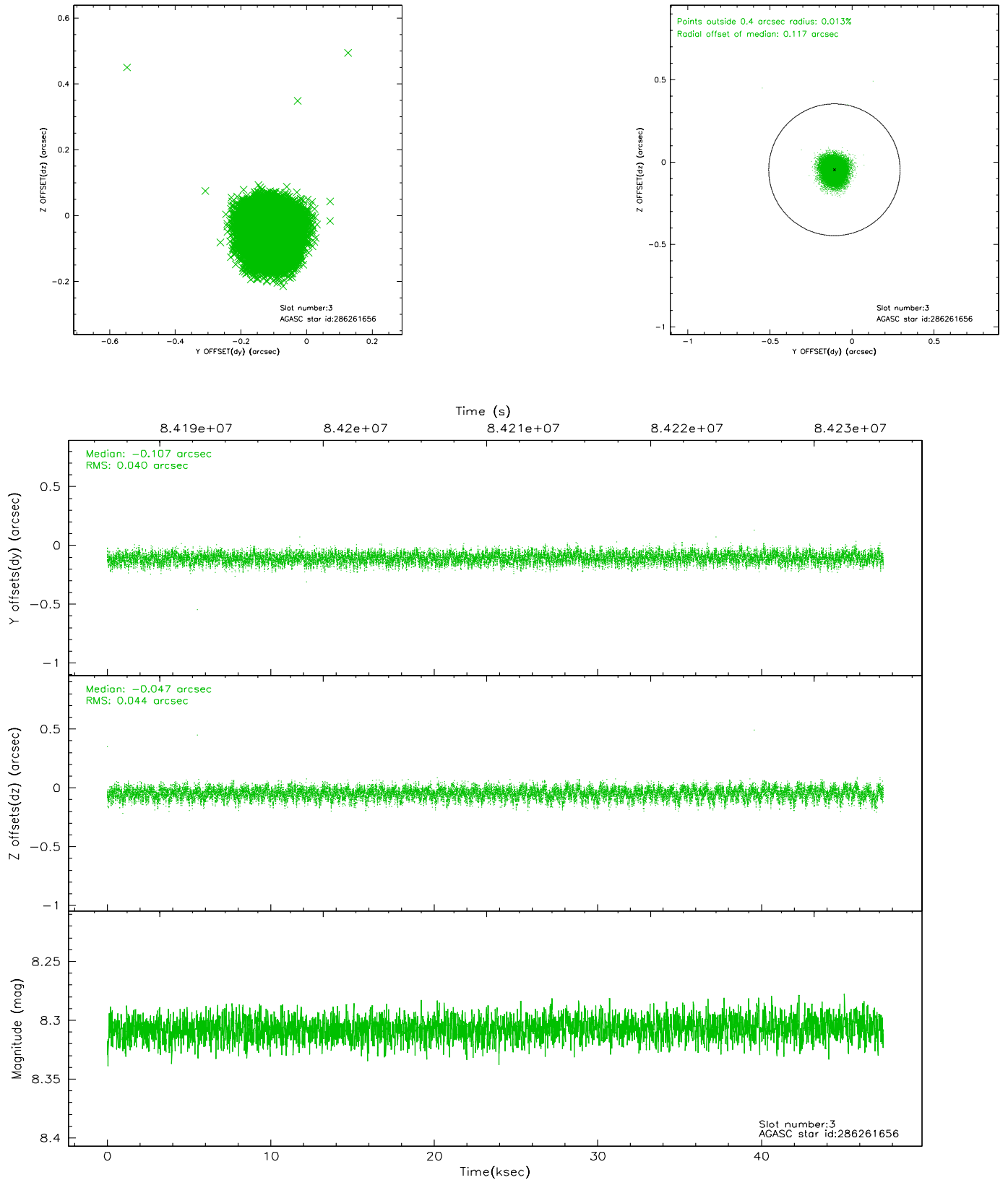


### Slot Statistics

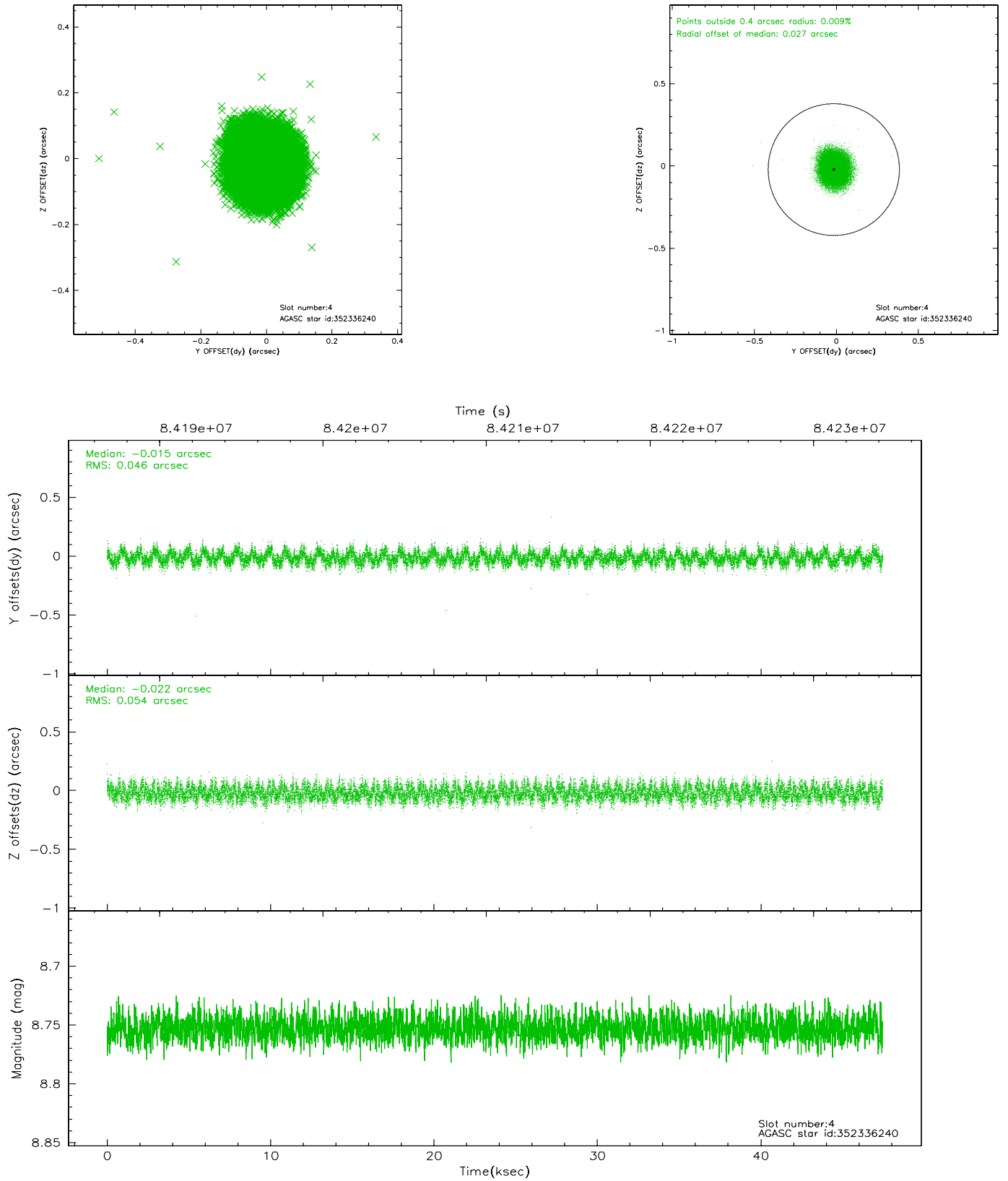
slot	status	id	mag	n_pts	med_dy	med_dz	dr1	dr2	ra	dec	mean_y	mean_z
0	FID	ACIS-I-2	7.15	11577	-0.021	-0.017	0.009	0.015	0.000000	0.000000	-755.90	-834.97
1	FID	ACIS-I-4	7.19	11577	-0.074	0.026	0.006	0.010	0.000000	0.000000	2158.11	1071.26
2	FID	ACIS-I-5	7.23	11577	-0.006	0.060	0.009	0.014	0.000000	0.000000	-1809.73	1069.11
3	GUIDE	286261656	8.31	23147	-0.107	-0.047	0.064	0.102	314.037242	29.882823	1073.08	1232.13
4	GUIDE	352336240	8.75	23150	-0.015	-0.022	0.077	0.120	314.097220	30.851920	-1223.77	-1400.32
5	GUIDE	352331792	8.94	23148	-0.024	-0.024	0.066	0.107	313.905878	30.767958	-571.76	-1527.42
6	GUIDE	286135144	9.11	23146	0.082	0.071	0.075	0.125	313.842737	29.762029	1819.62	1199.39
7	GUIDE	352341328	9.08	23116	0.061	0.024	0.076	0.123	314.623801	30.398894	-1509.00	888.75

## 2.4 Star Slots

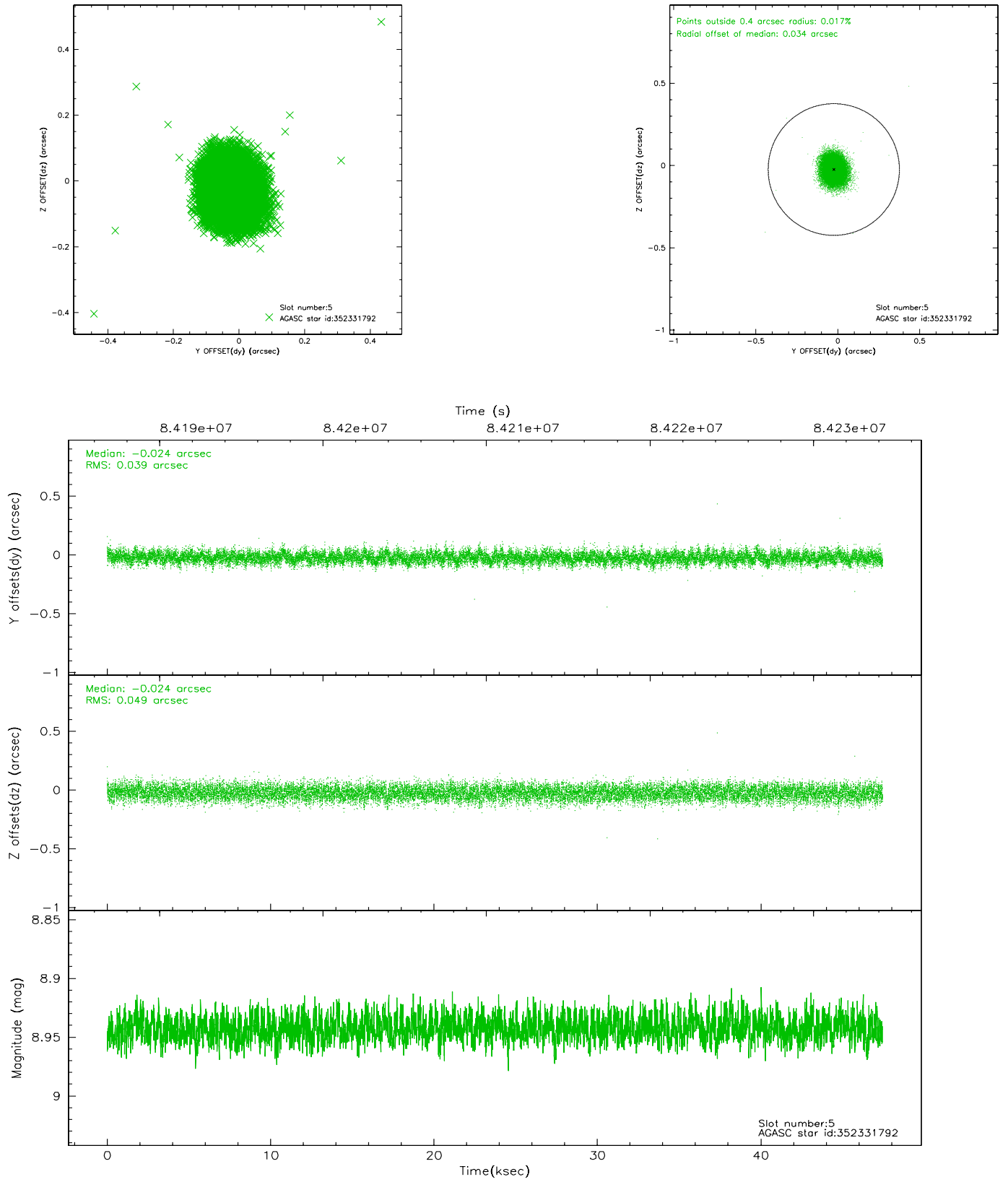
### 2.4.1 Slot 3



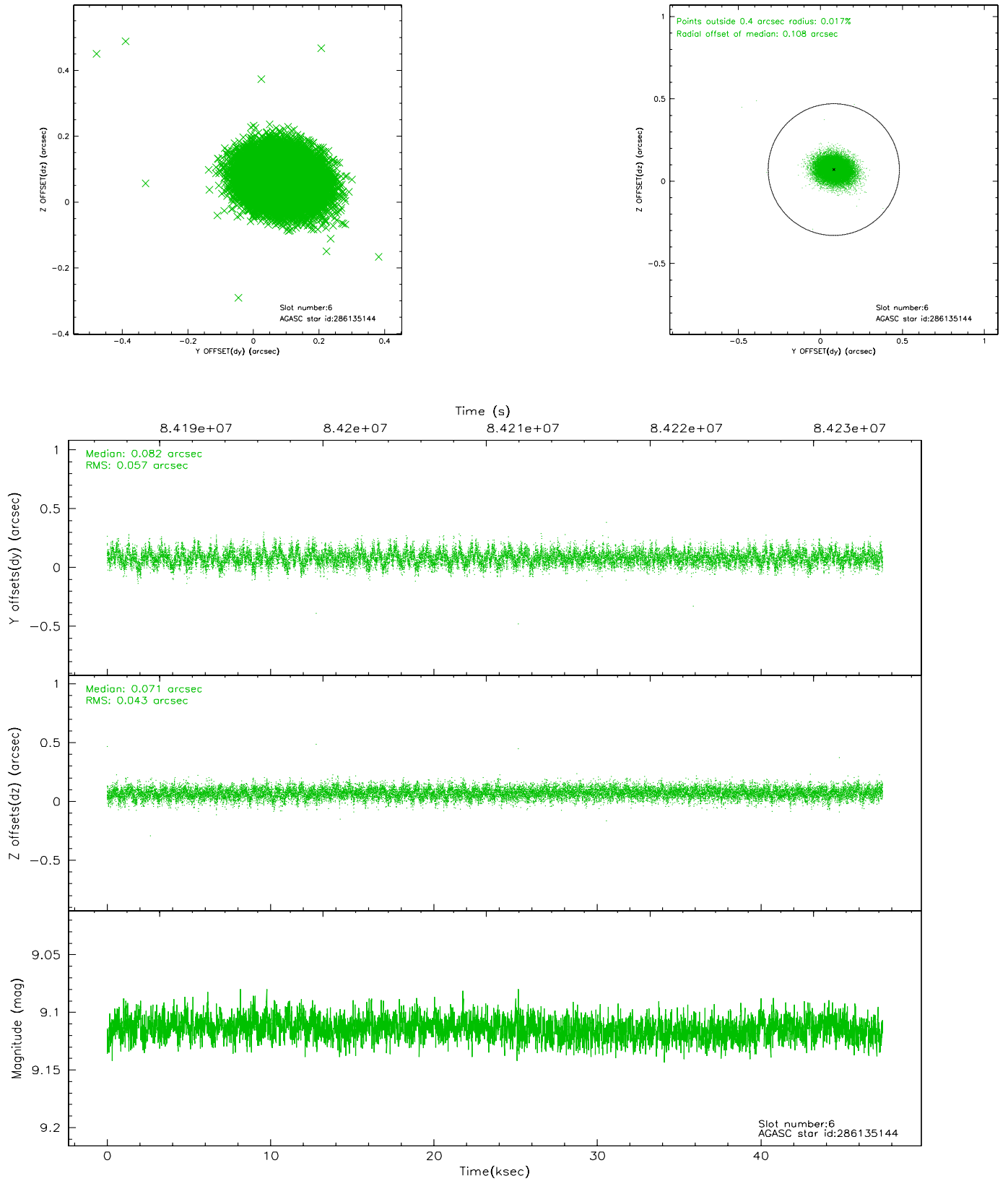
## 2.4.2 Slot 4



### 2.4.3 Slot 5

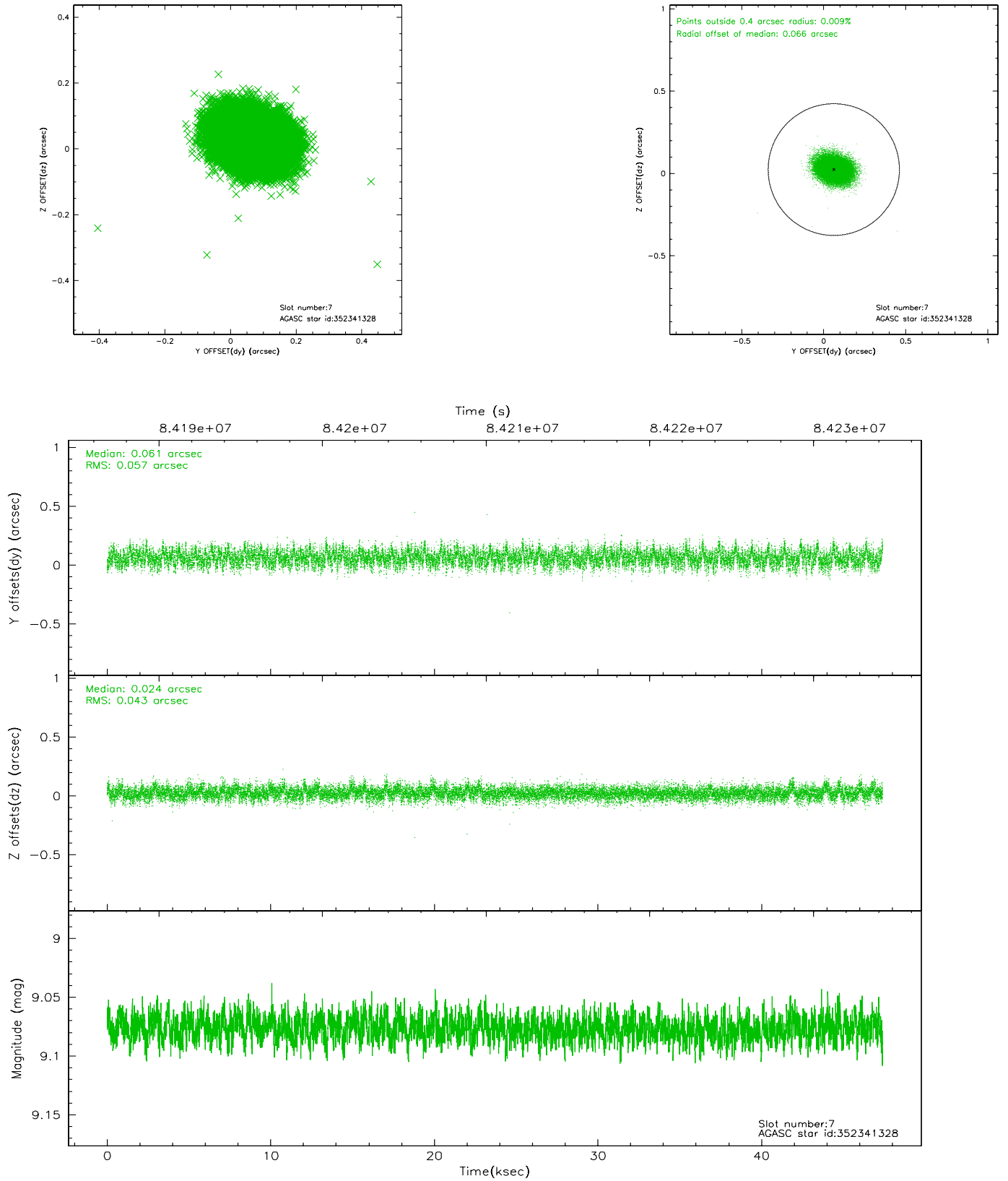


## 2.4.4 Slot 6



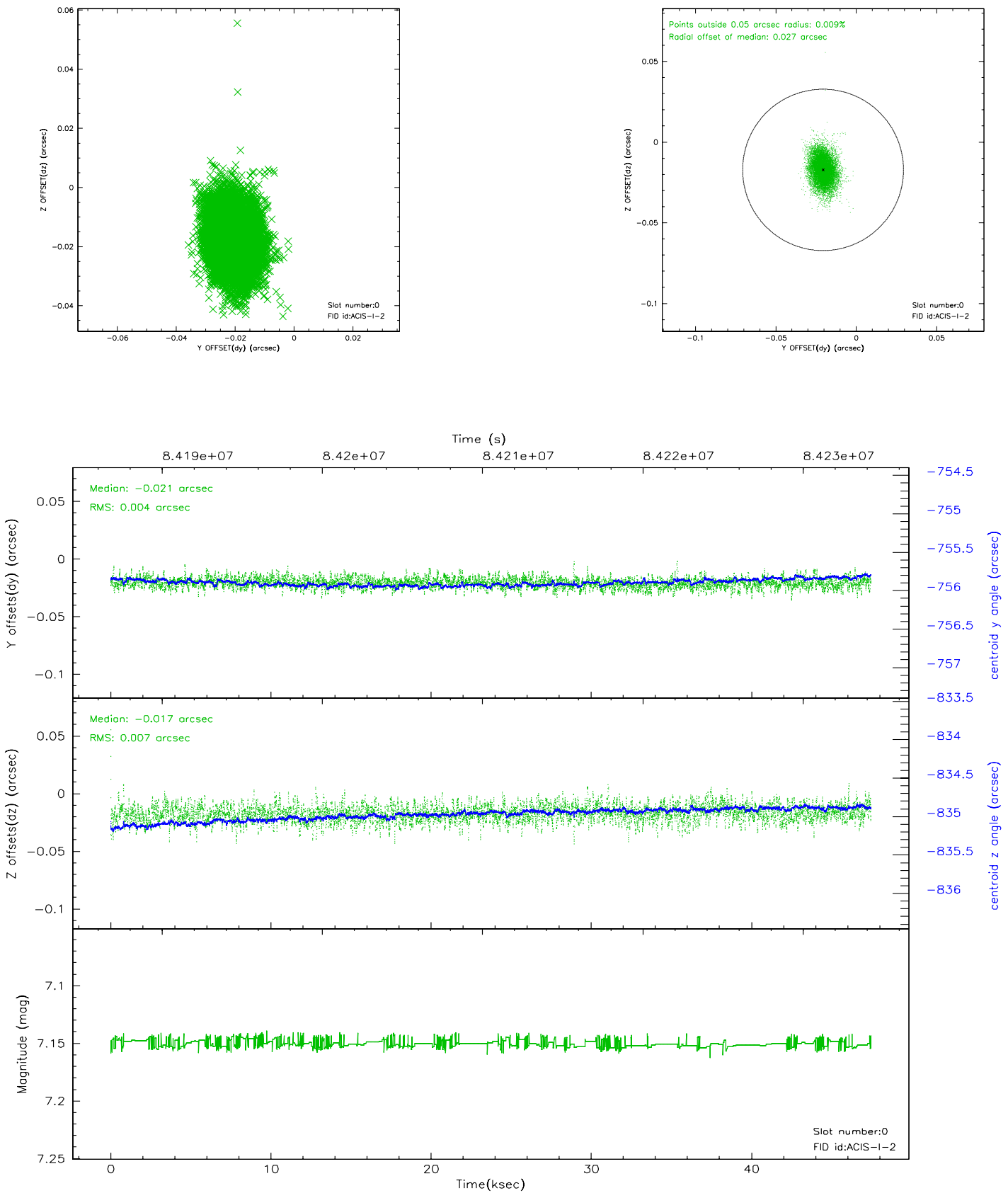


## 2.4.5 Slot 7

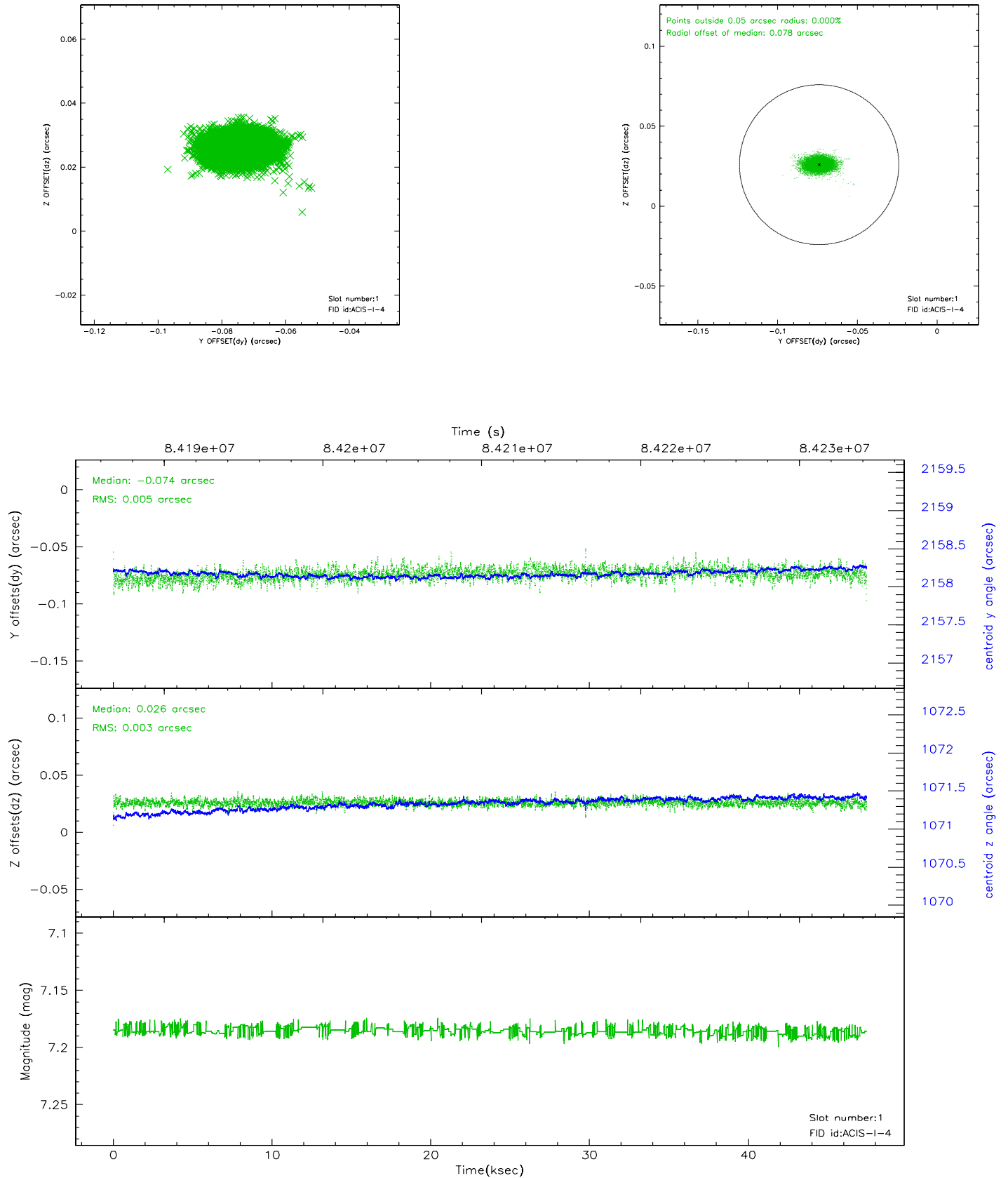


## 2.5 FID Slots

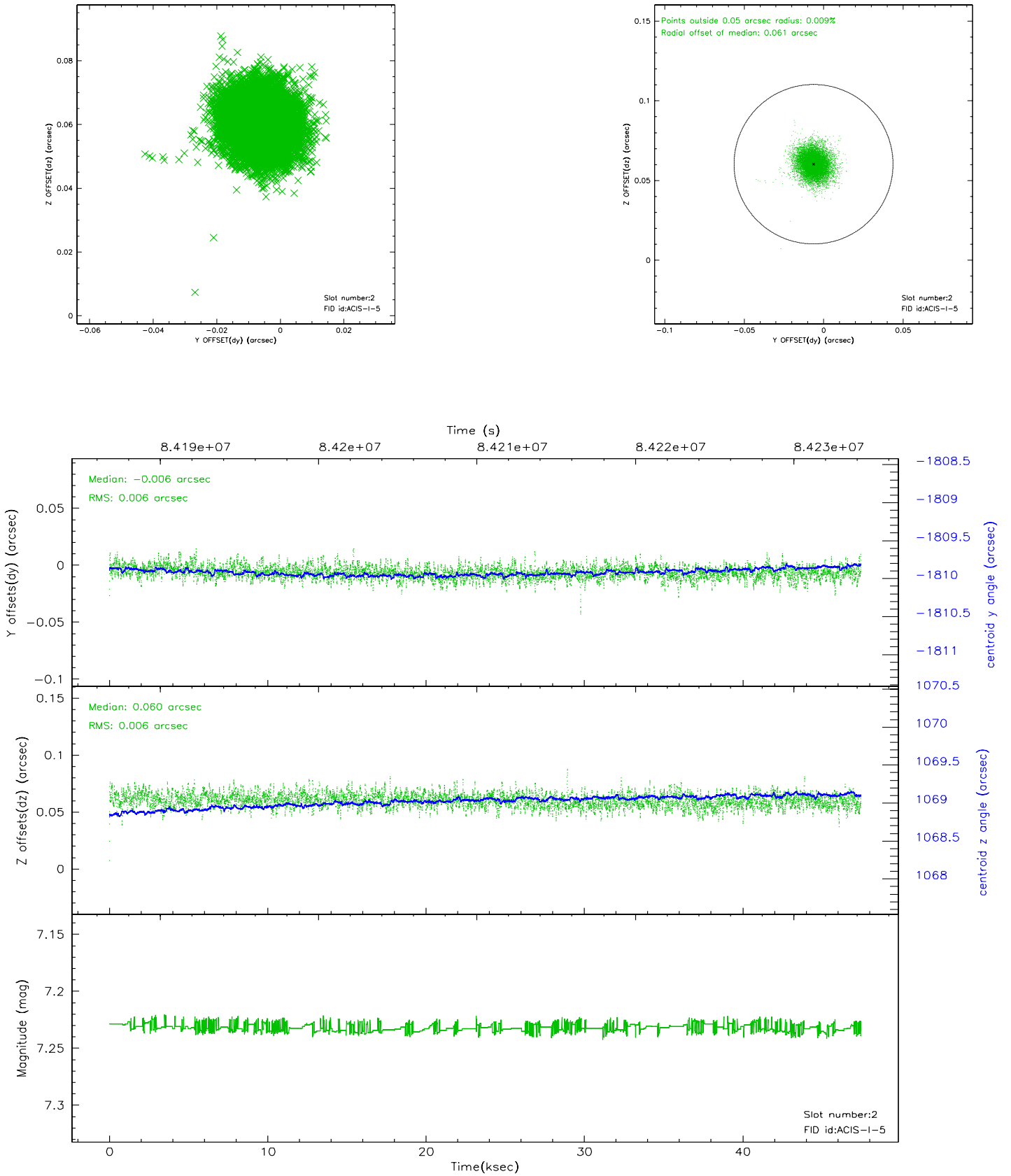
### 2.5.1 Slot 0



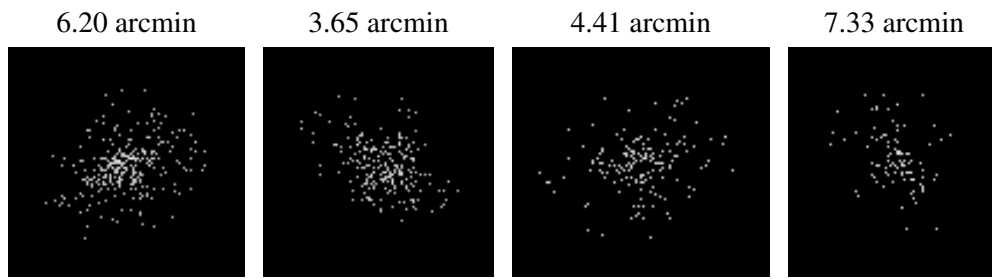
## 2.5.2 Slot 1



### 2.5.3 Slot 2



### 3 Point Sources



## A Summary

### A.1 Status

V&V Scientist	Jen Lauer
V&V Date (YYYY-MM-DD)	2007.06.06
V&V Edition	1
V&V Disposition and Status	OK
V&V Charge Time	47.395

### A.2 Comments