

V&V Reference Report

L2 ASCDS Version : 8.4.3

Observation 7254 - L2 Version 2
Chandra X-Ray Center

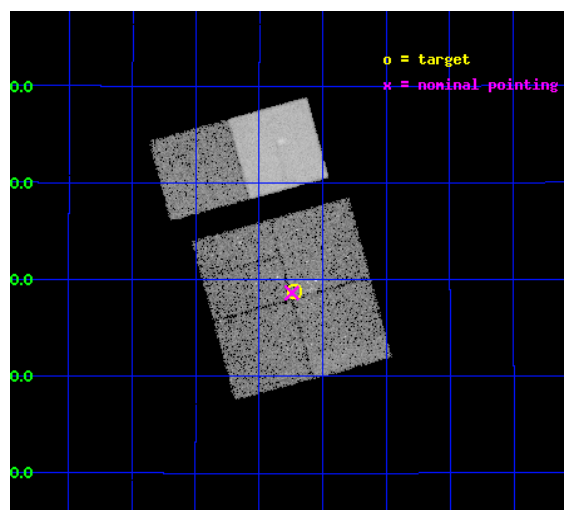
L2 Processing Date : Mar 22 2012

Contents

1	Front	2
2	OBI	3
2.1	OBI	3
2.1.1	Images	3
2.1.2	Bias	3
2.1.3	Parameters	4
2.1.4	Events	4
2.2	Compared Parameters	5
2.3	Aspect	6
2.4	Star Slots	9
2.4.1	Slot 3	9
2.4.2	Slot 4	10
2.4.3	Slot 5	11
2.4.4	Slot 6	12
2.4.5	Slot 7	13
2.5	FID Slots	14
2.5.1	Slot 0	14
2.5.2	Slot 1	15
2.5.3	Slot 2	16
A	Summary	17
A.1	Status	17
A.2	Comments	17

1 Front

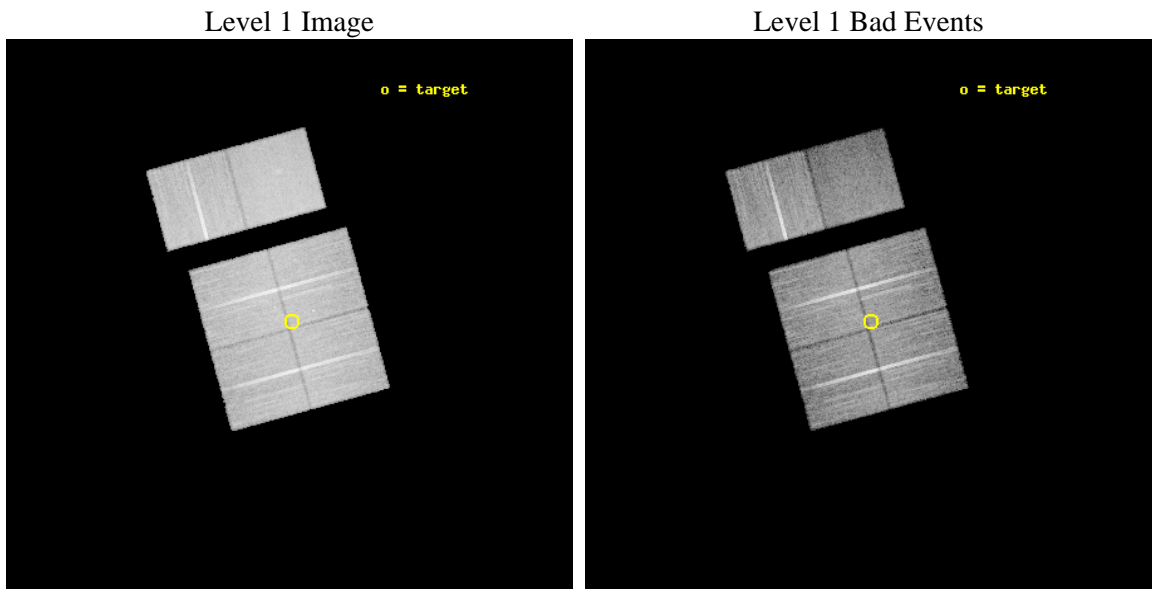
seq_num	200412	Sequence number
obs_id	7254	Observation id
title	The Evolution of Disks, Protostars and the Young Cluster IRAS 20050+2730	Proposal title
observer	Dr. Scott Wolk	Principal investigator
object	IRAS 20050+2720	Source name
dtcycle	0	
cycle	P	events from which exps? Prim/Second/Both
ra_targ	301.806667	Observer's specified target RA [deg]
dec_targ	27.480222	Observer's specified target Dec [deg]
ra_nom	301.81078292472	Nominal RA [deg]
dec_nom	27.477361141085	Nominal Dec [deg]
roll_nom	344.73987322249	Nominal Roll [deg]
revision	2	Processing version of data
ontime	21116.758921117	Sum of GTIs [s]
livetime	20849.365804672	Livetime [s]
ontime0	21119.999921322	Sum of GTIs [s]
ontime1	21116.75893113	Sum of GTIs [s]
ontime2	21119.999921322	Sum of GTIs [s]
ontime3	21116.758921117	Sum of GTIs [s]
ontime6	21119.999921322	Sum of GTIs [s]
ontime7	21119.999921322	Sum of GTIs [s]
l2events	130689	Number of level 2 events



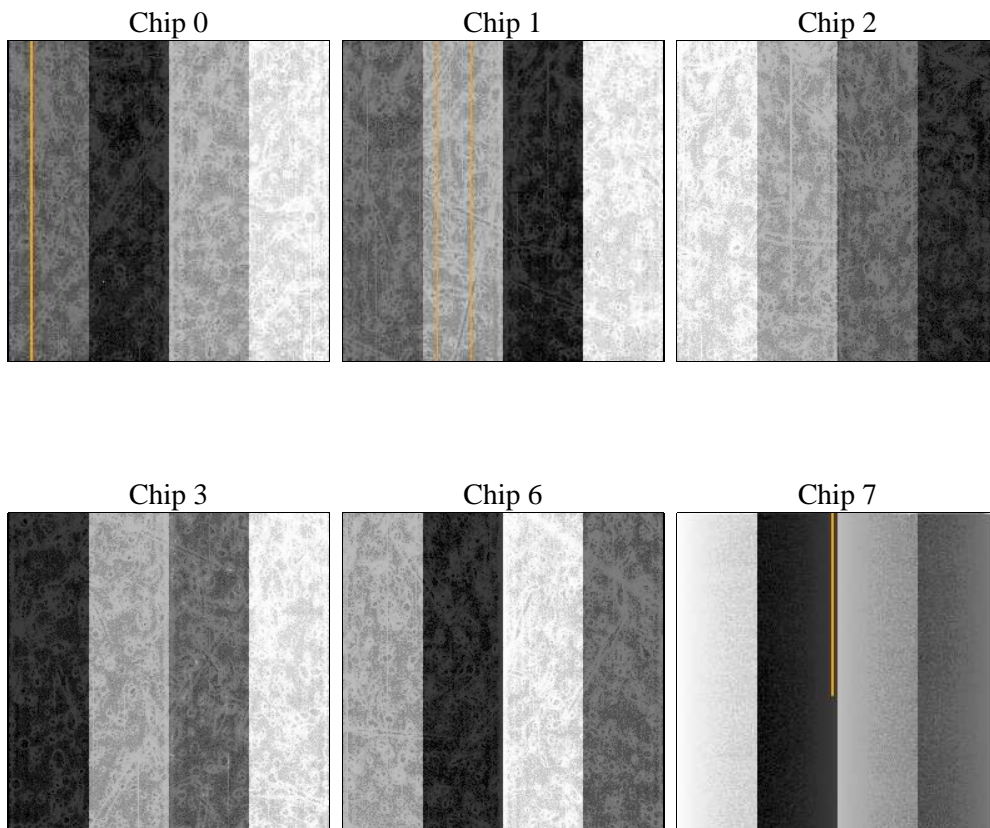
2 OBI

2.1 OBI

2.1.1 Images



2.1.2 Bias



2.1.3 Parameters

obi_num	1	Obi number	sched_exp_time	21000.000000	[s] Scheduled observation exposure time
ascdsver	8.4.3	Processing system revision	ontime	21116.758921117	Sum of GTIs [s]
caldsver	4.4.8	 	ontime0	21119.999921322	Sum of GTIs [s]
date	2012-03-22T01:27:16	Date and time of file creation	ontime1	21116.758931113	Sum of GTIs [s]
revision	2	Processing version of data	ontime2	21119.999921322	Sum of GTIs [s]
			ontime3	21116.758921117	Sum of GTIs [s]
			ontime6	21119.999921322	Sum of GTIs [s]
			ontime7	21119.999921322	Sum of GTIs [s]
			l1events	881131	Number of level 1 events

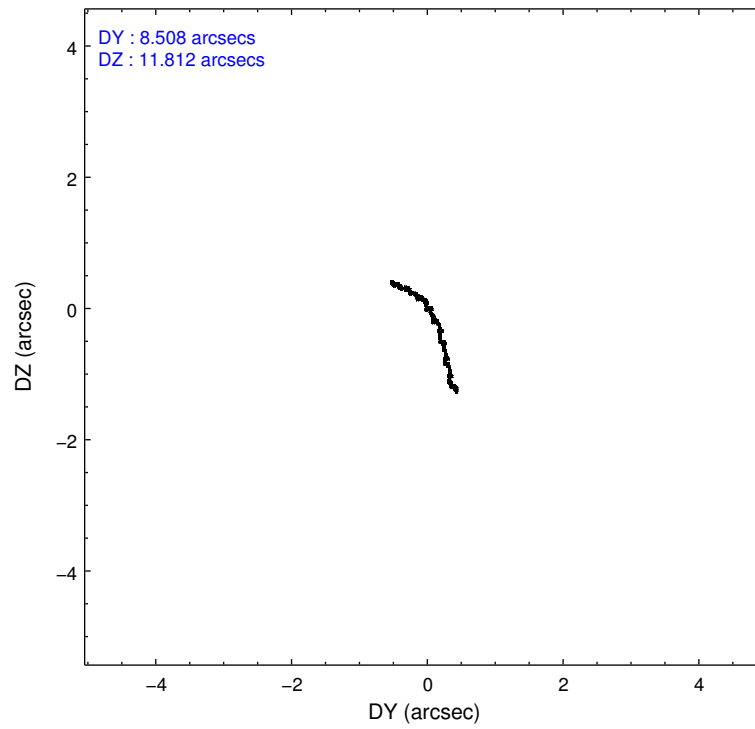
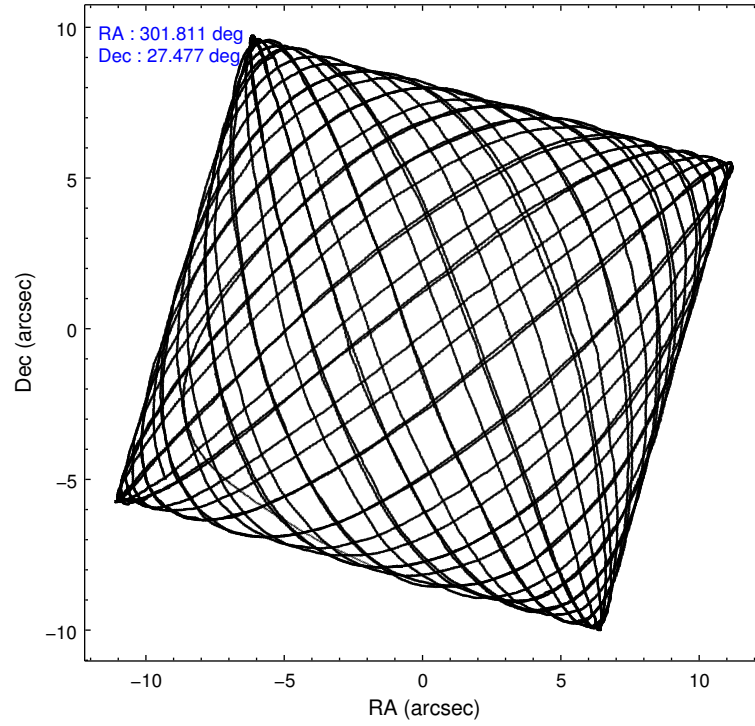
2.1.4 Events

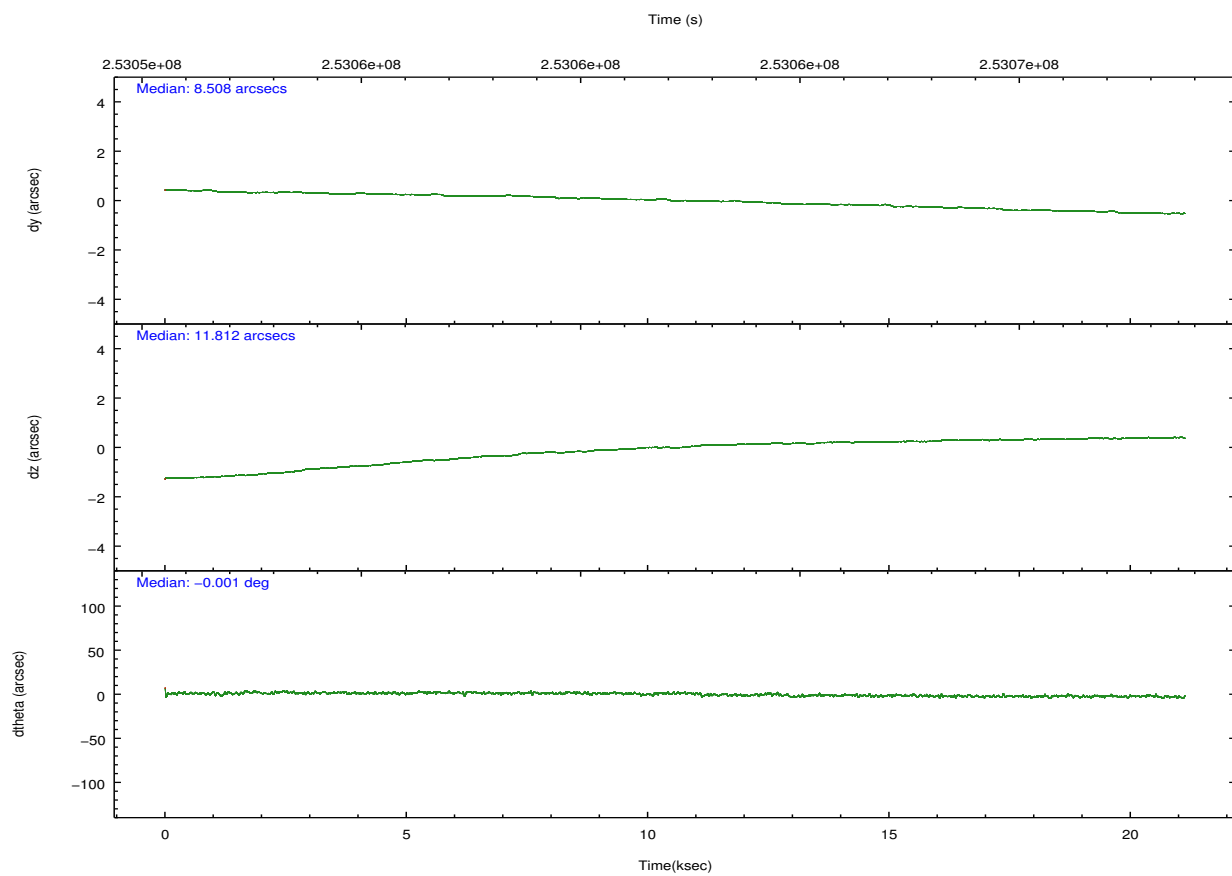
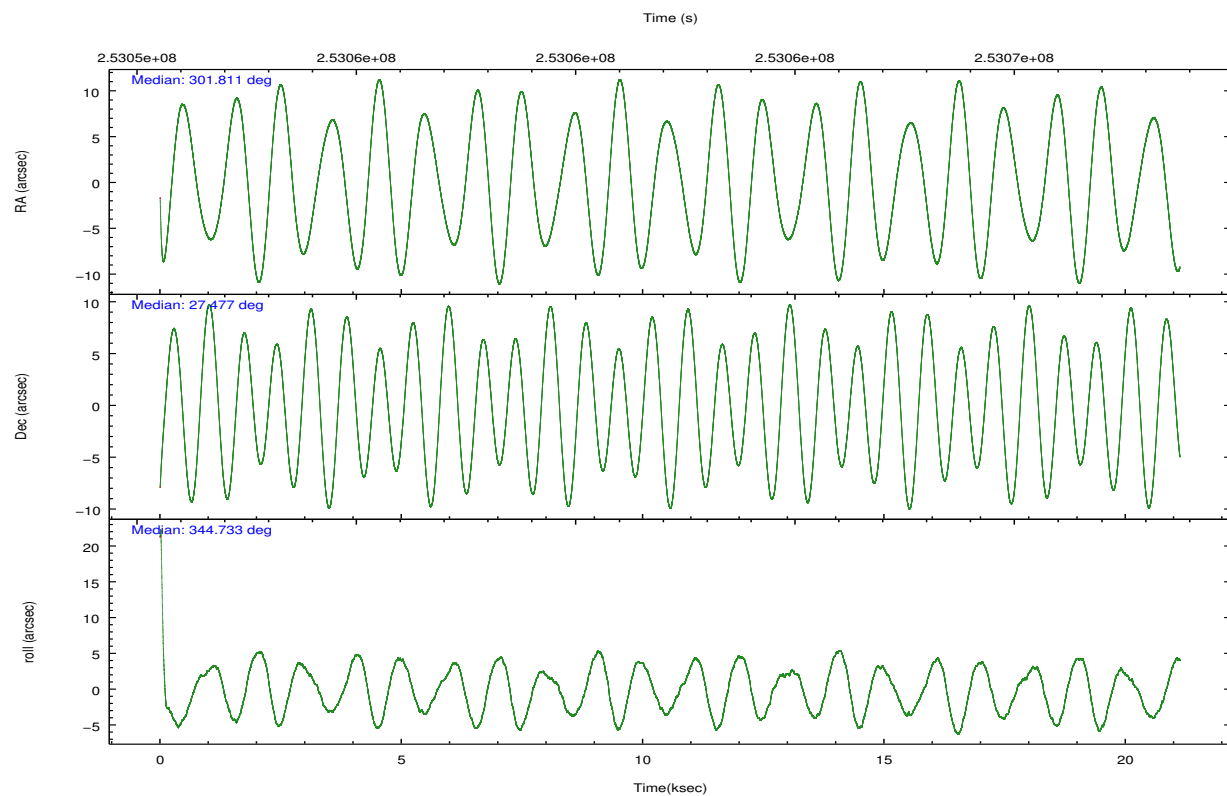
	ccd 0	ccd 1	ccd 2	ccd 3	ccd 6	ccd 7		ccd 0	ccd 1	ccd 2	ccd 3	ccd 6	ccd 7
level 1 events	132910	139303	153028	142989	151444	161457	grade 0 events	4713	5832	5579	5402	4914	6419
rejected events	119129	123407	138743	128707	136879	89209		3%	4%	3%	3%	3%	3%
rejected %	89%	88%	90%	90%	90%	55%	grade 1 events	60	71	80	75	75	149
								0%	0%	0%	0%	0%	0%
							grade 2 events	3286	3520	3309	3016	3289	14851
								2%	2%	2%	2%	2%	9%
							grade 3 events	1642	1720	1478	1679	1678	6784
								1%	1%	0%	1%	1%	4%
							grade 4 events	1565	1741	1557	1571	1599	6836
								1%	1%	1%	1%	1%	4%
							grade 5 events	4856	5605	4699	5673	6010	17178
								3%	4%	3%	3%	3%	10%
							grade 6 events	2749	3316	2550	2799	3260	38268
								2%	2%	1%	1%	2%	23%
							grade 7 events	114039	117498	133776	122774	130619	70972
								85%	84%	87%	85%	86%	43%

2.2 Compared Parameters

Parameter	Planned	Actual	Parameter	Planned	Actual
Instrument	ACIS	ACIS	Obspar format version number	7	7
Detector	ACIS-012367	ACIS-012367	Obspar file type	PREDICTED	ACTUAL
Grating	NONE	NONE	Obspar update status	NONE	UPDATED
Data mode	VFAINT	VFAINT	Number of optional ACIS chips dropped	0	0
Observation mode	POINTING	POINTING	On-chip summing requested	N	N
[deg] Pointing RA	301.780955	301.810782924718	Subarray requested	NONE	NONE
[deg] Pointing Dec	27.470279	27.47736114108459	Alternating exposures requested	N	N
[deg] Pointing Roll	344.544937	344.739873222485	[s] Primary exposure time	0.000000	3.2
[mm] SIM focus pos	-0.782348	-0.7809083437167272			
[mm] SIM defocus	0	0.001439871863259334			
[mm] SIM translation stage pos	-233.592463	-233.5874344608287			
[mm] SIM translation stage offset	0	-0.005018542100998502			
[s] Observation start time (MET)	253051718.184000	253050489.43077			
Observation start date	2006-01-07T20:07:33	2006-01-07T19:48:09			
[s] Observation end time (MET)	253072718.184000	253074035.73186			
Observation end date	2006-01-08T01:57:33	2006-01-08T02:20:35			
Read mode	TIMED	TIMED			

2.3 Aspect



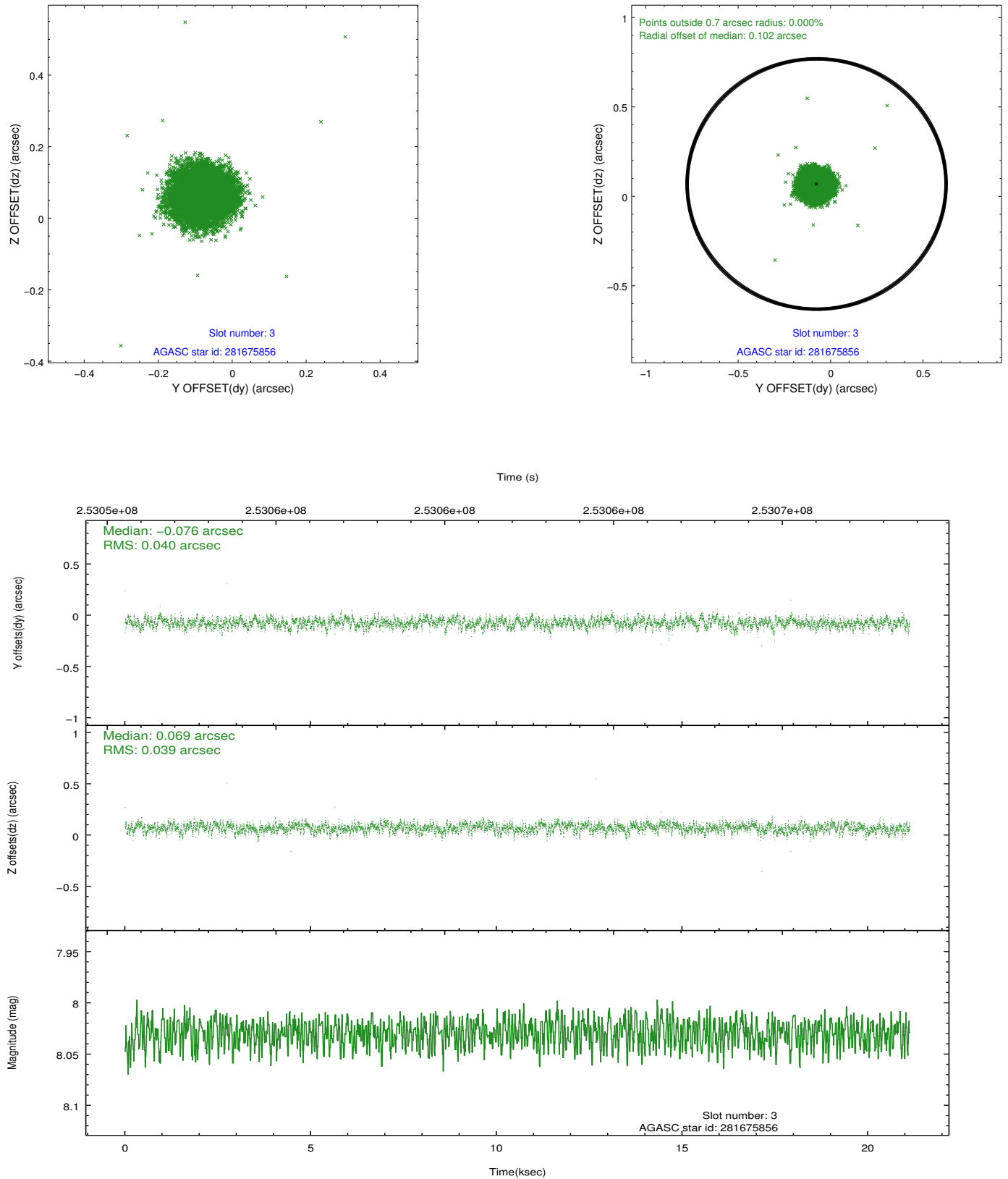


Slot Statistics

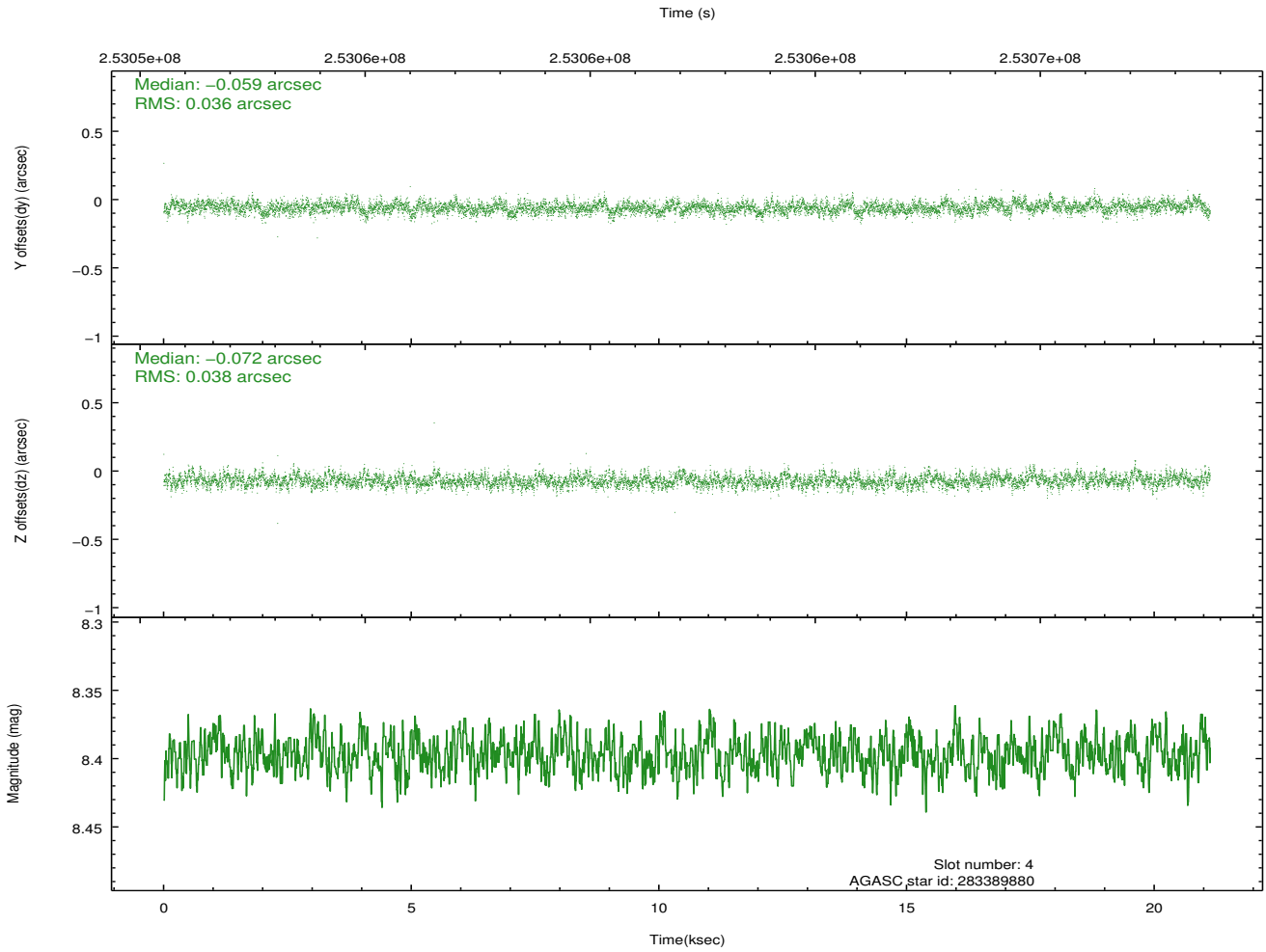
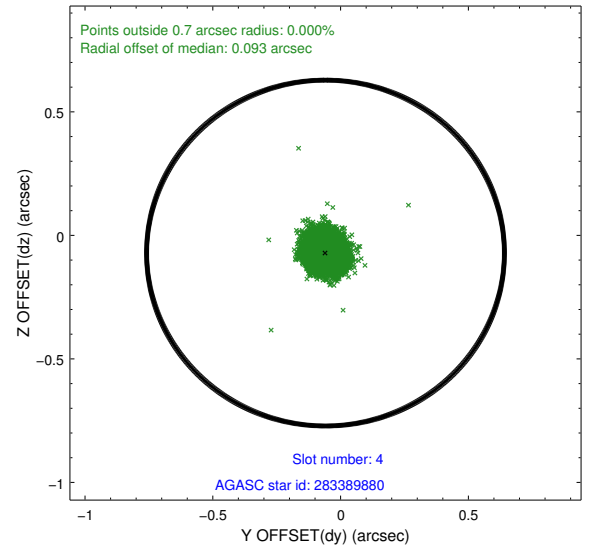
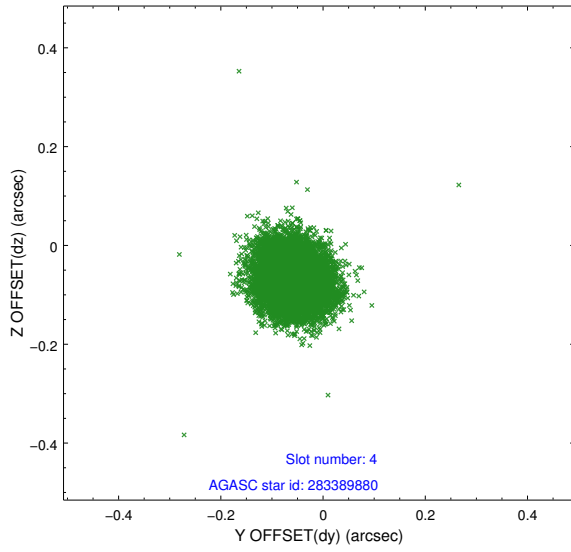
slot	status	id	mag	n_pts	med_dy	med_dz	dr1	dr2	ra	dec	mean_y	mean_z
0	FID	ACIS-I-1	7.24	5153	-0.044	-0.003	0.016	0.040	0.000000	0.000000	931.09	-835.17
1	FID	ACIS-I-2	7.14	5152	-0.167	-0.067	0.013	0.019	0.000000	0.000000	-763.03	-841.73
2	FID	ACIS-I-4	7.17	5153	0.113	0.137	0.018	0.030	0.000000	0.000000	2151.09	1064.66
3	GUIDE	281675856	8.03	10305	-0.076	0.069	0.059	0.094	301.358026	27.424410	-1258.73	-516.79
4	GUIDE	283389880	8.40	10301	-0.059	-0.072	0.055	0.090	302.301614	27.648031	1428.83	1062.81
5	GUIDE	281679136	9.08	10305	-0.017	0.025	0.095	0.156	301.370499	26.962508	-782.14	-2110.82
6	GUIDE	283381960	8.30	10301	0.120	0.068	0.073	0.116	302.080321	27.205259	1178.19	-662.88
7	GUIDE	283905072	7.54	10304	0.033	-0.083	0.059	0.096	301.533862	28.125916	-1385.20	2066.51

2.4 Star Slots

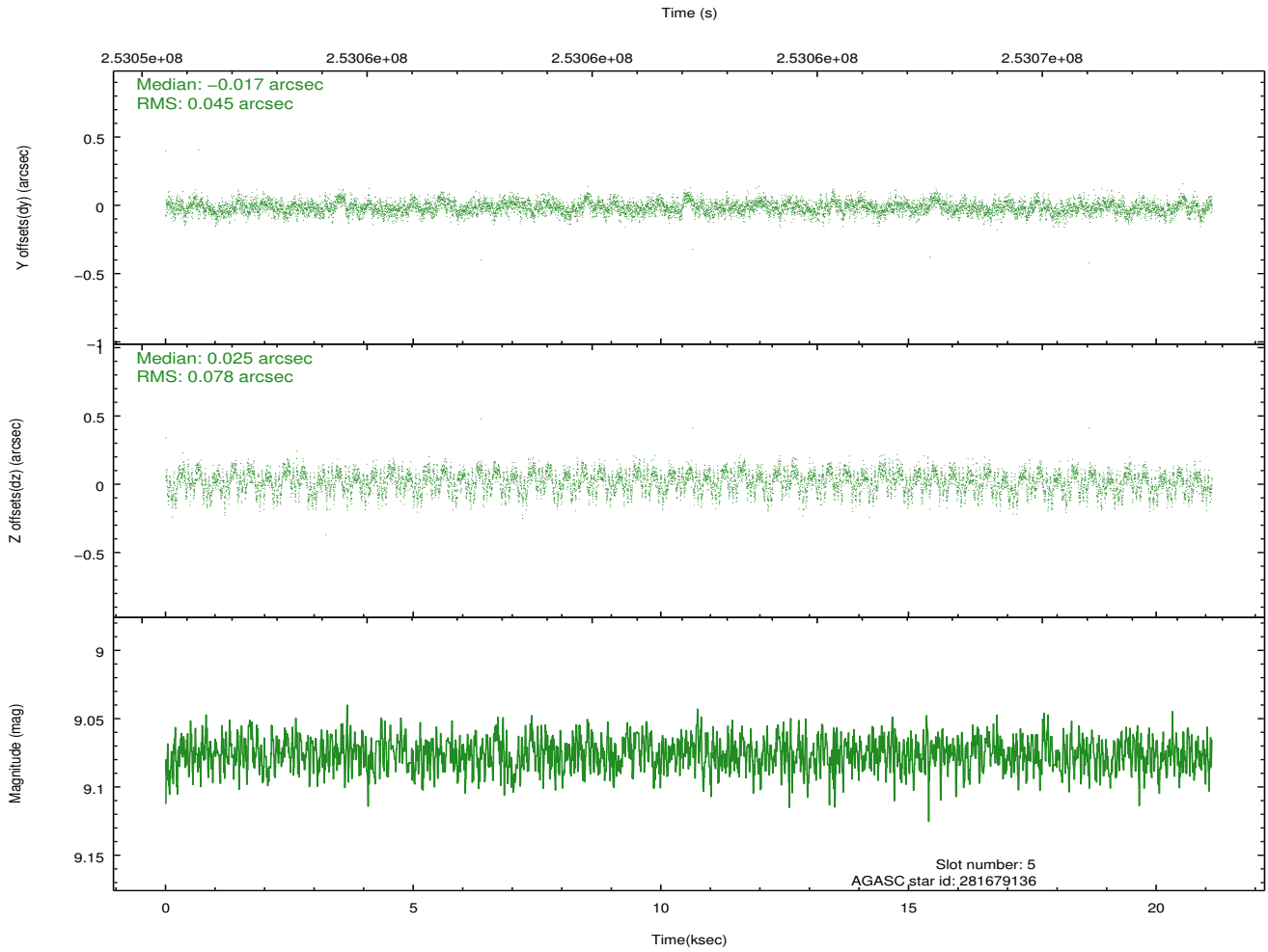
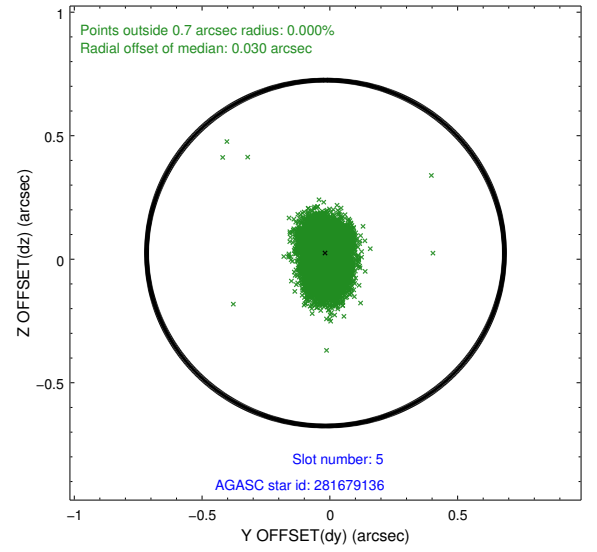
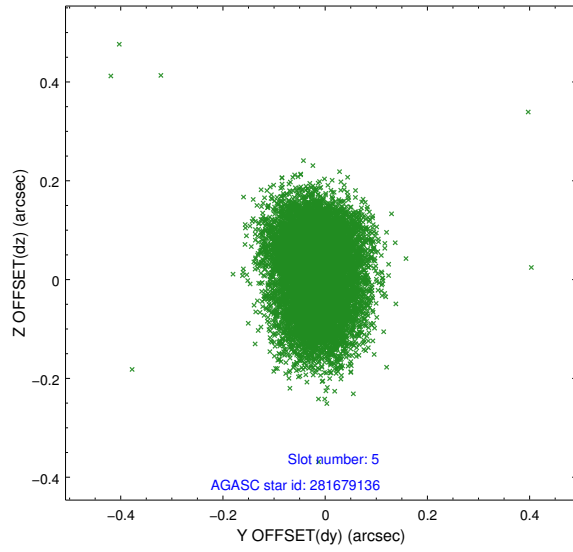
2.4.1 Slot 3



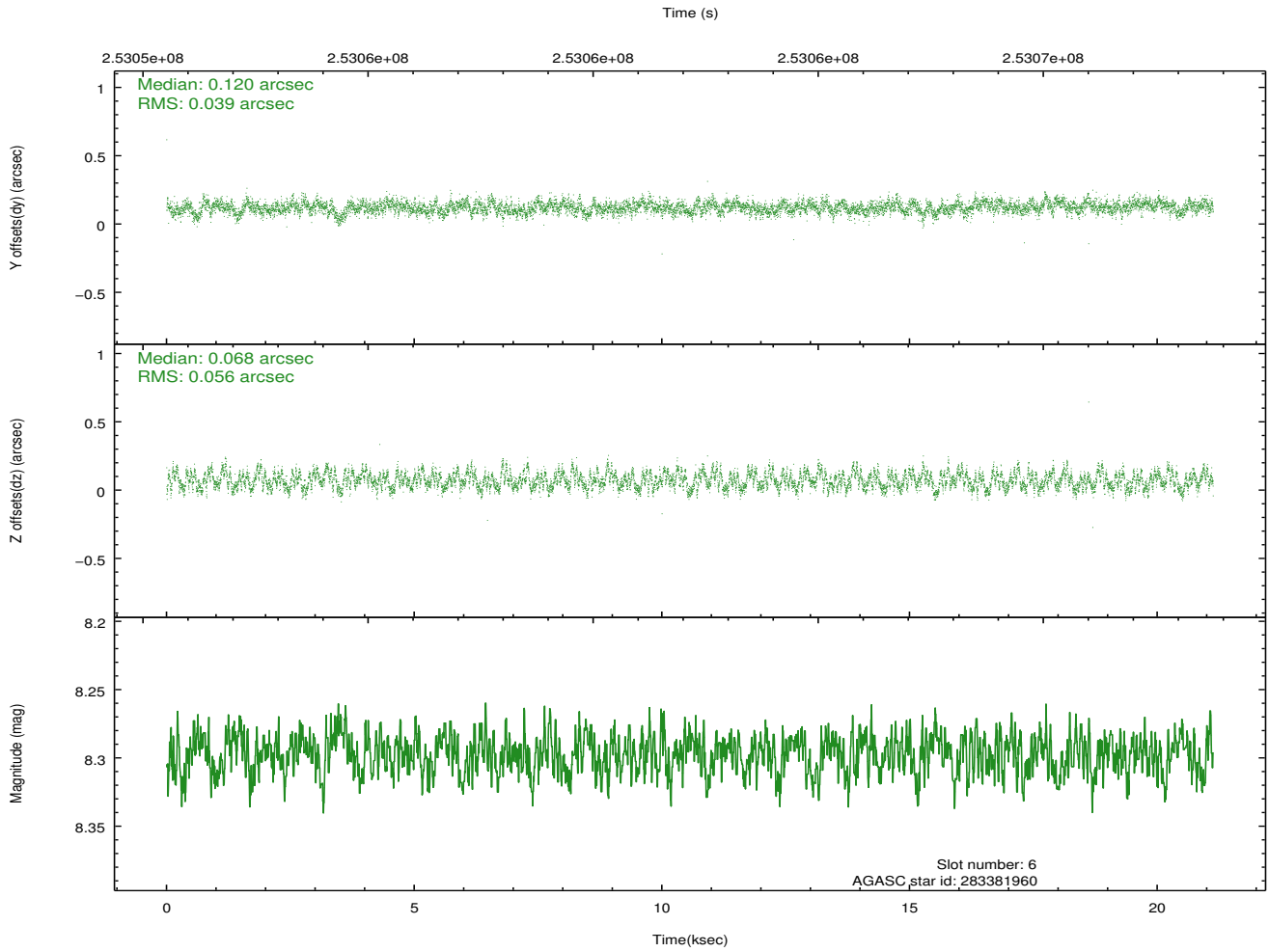
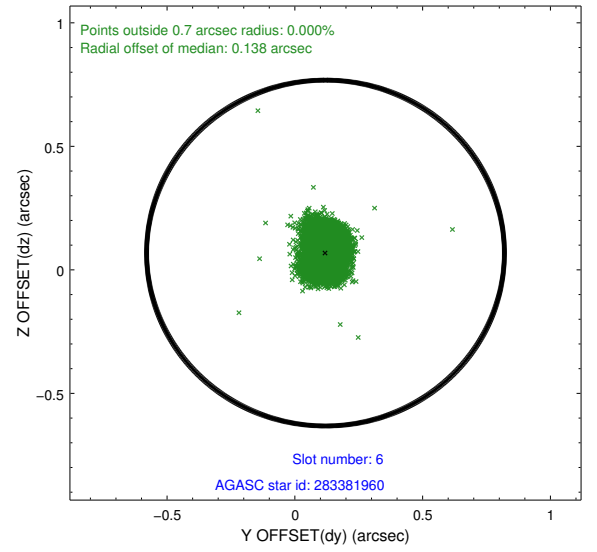
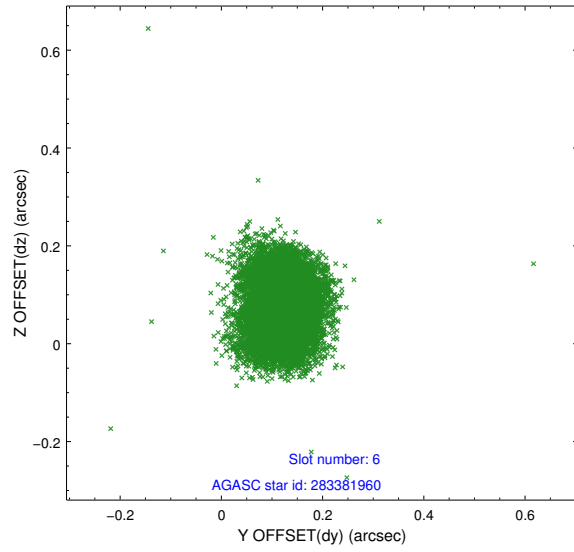
2.4.2 Slot 4



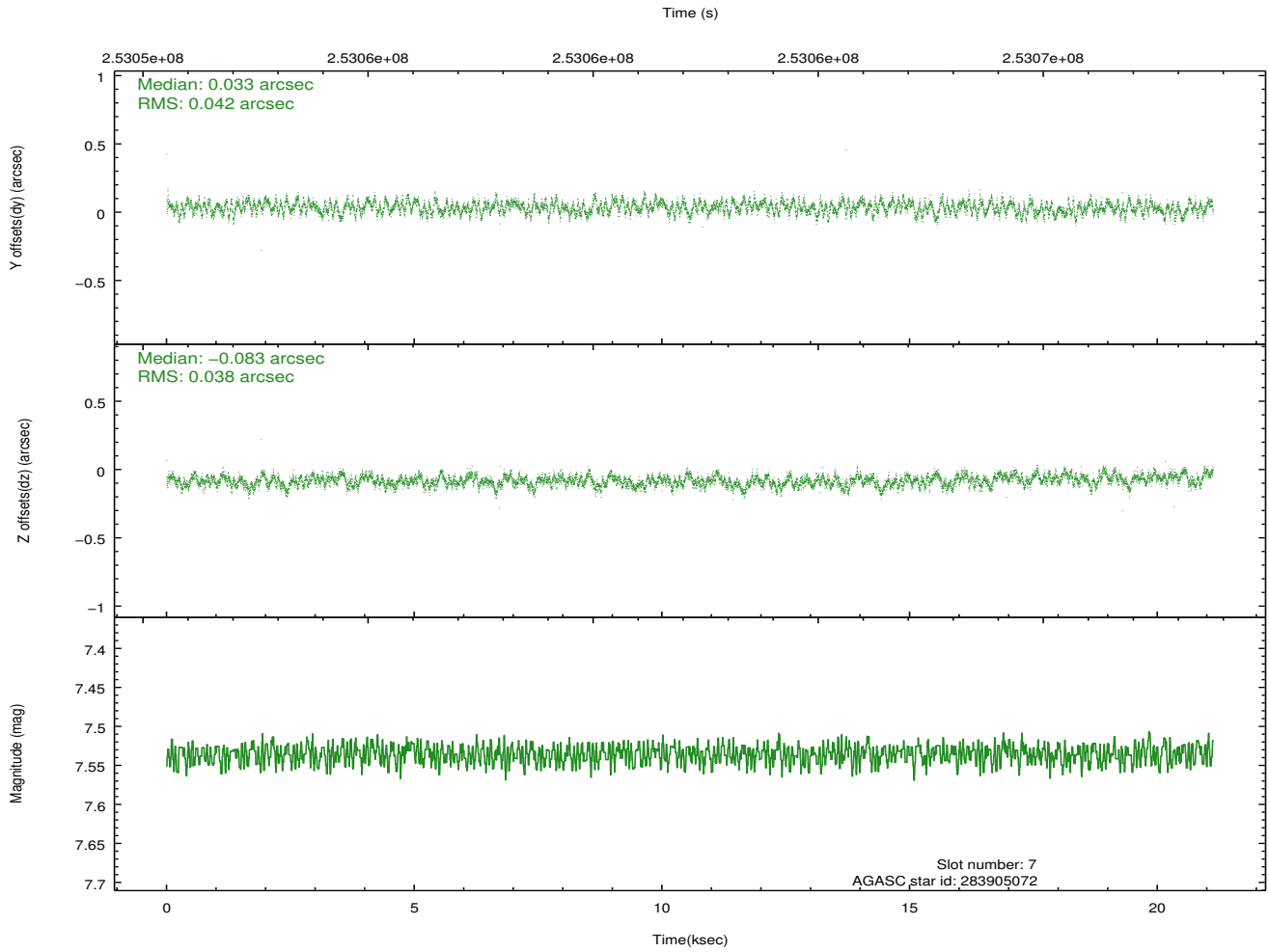
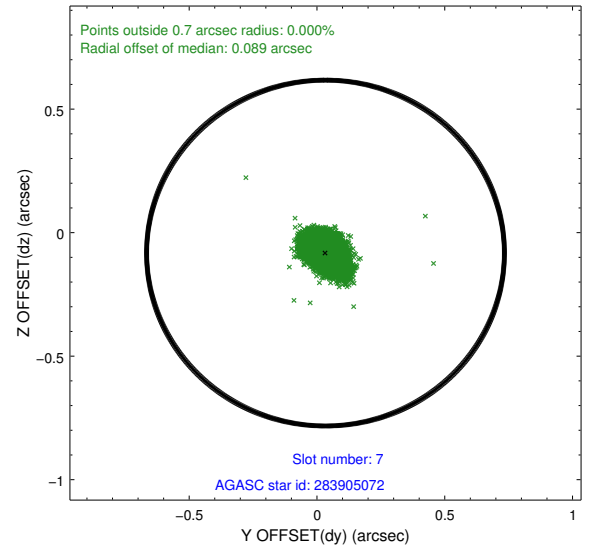
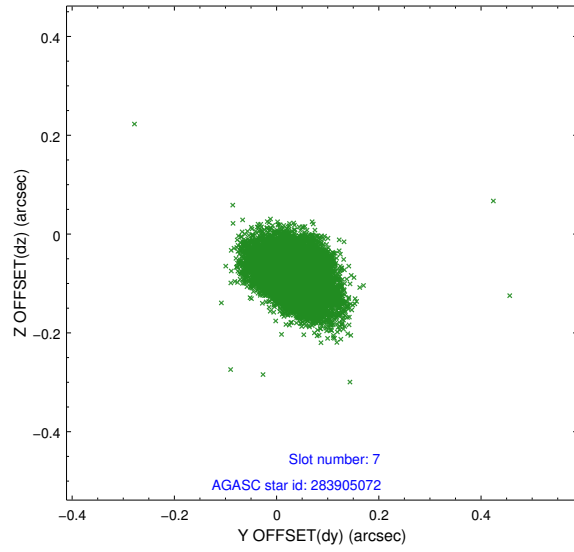
2.4.3 Slot 5



2.4.4 Slot 6

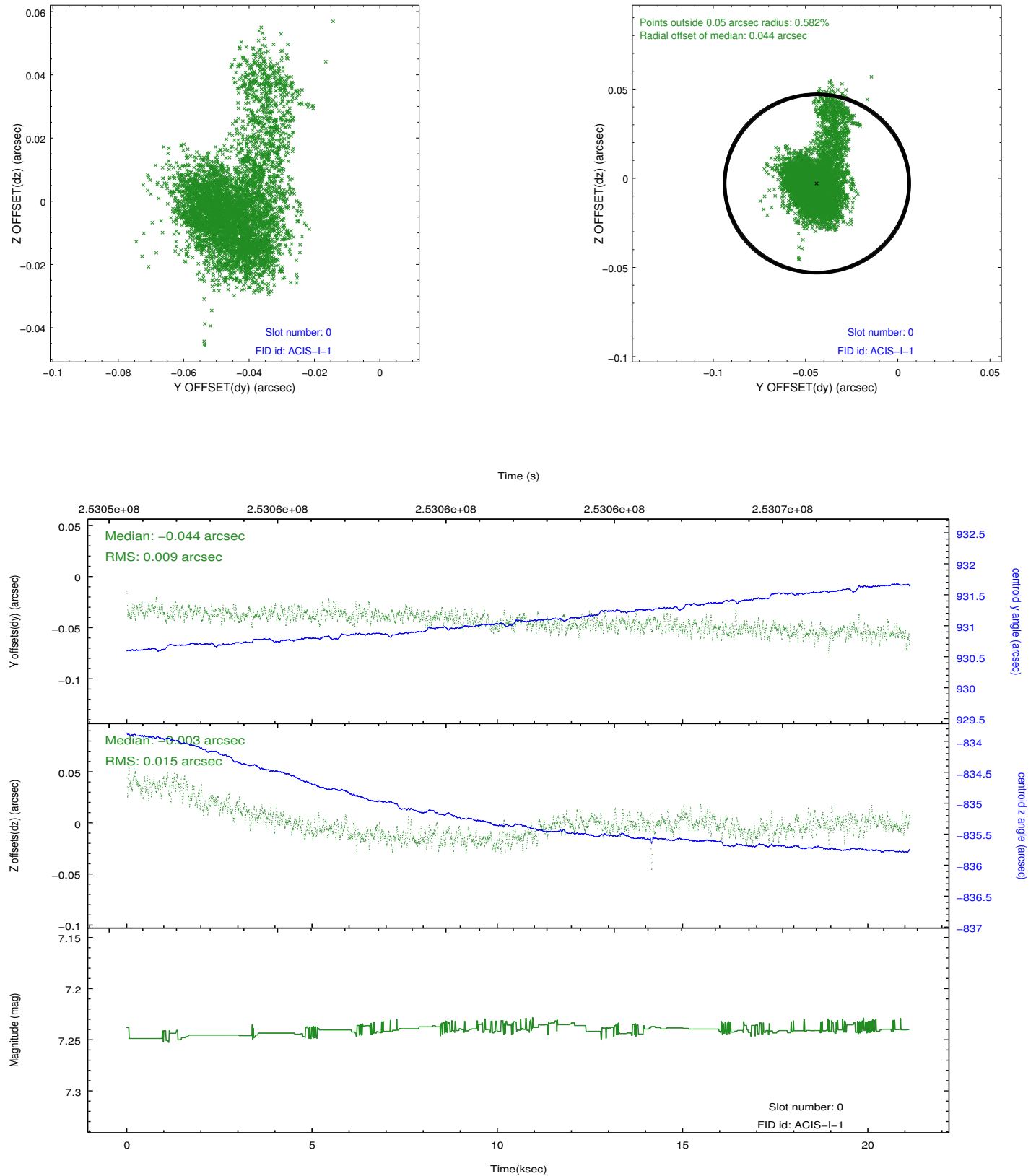


2.4.5 Slot 7

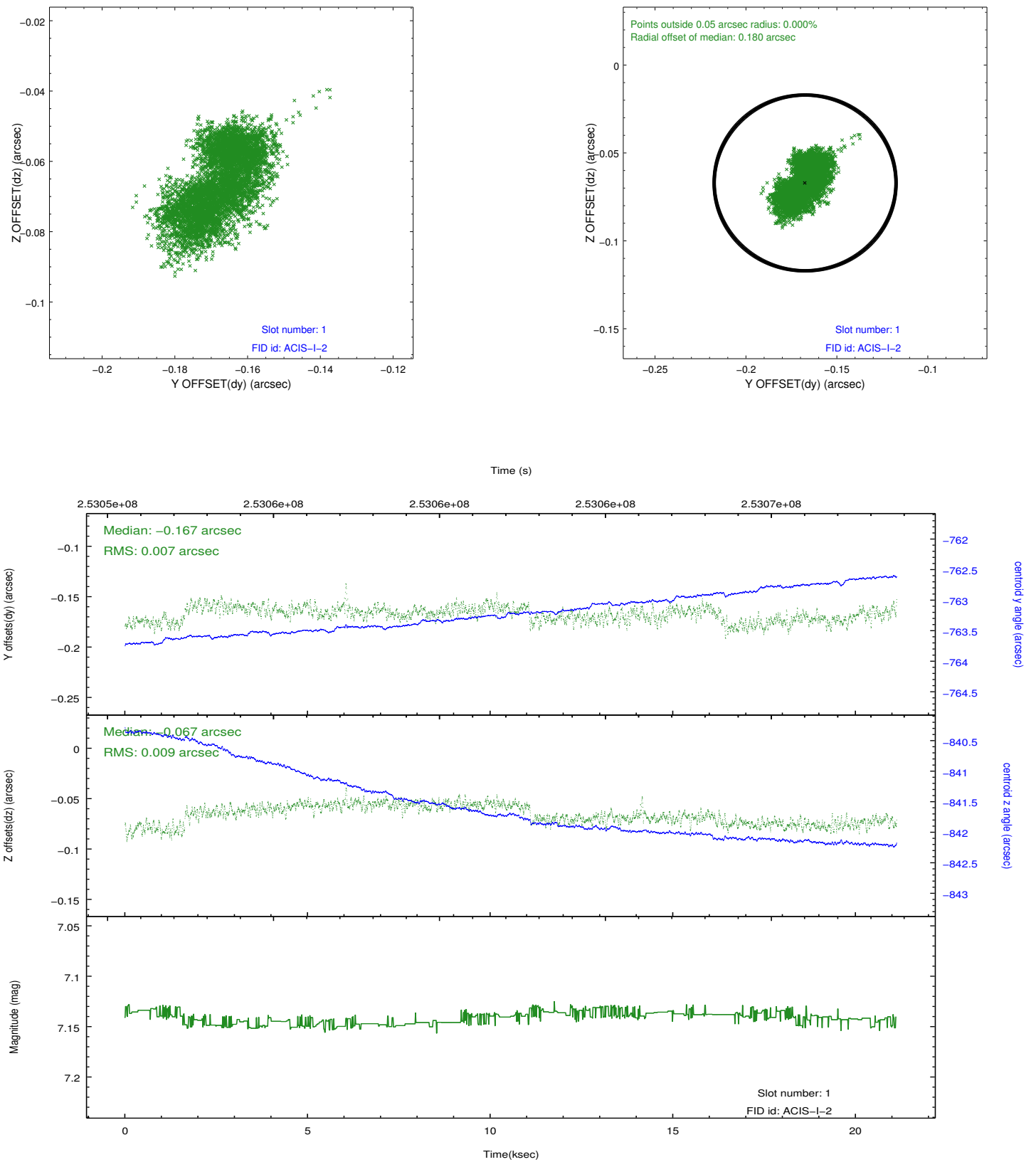


2.5 FID Slots

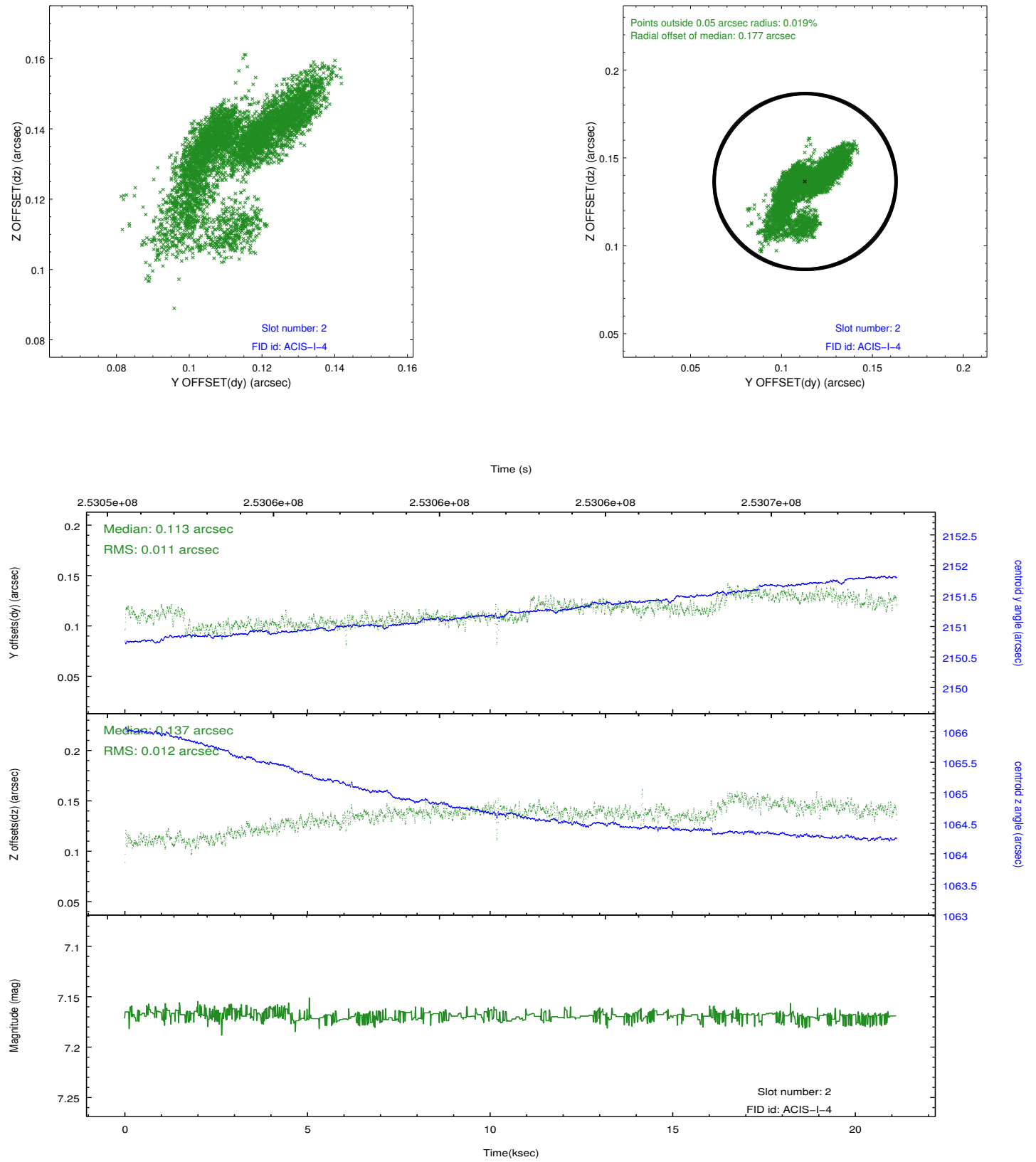
2.5.1 Slot 0



2.5.2 Slot 1



2.5.3 Slot 2



A Summary

A.1 Status

V&V Scientist	Beth Sundheim
V&V Date (YYYY-MM-DD)	2012.03.22
V&V Edition	1
V&V Disposition and Status	OK
V&V Charge Time	21.11675

A.2 Comments