

# V&V Reference Report

## L2 ASCDS Version : 7.6.7.1

Observation 7174 - L2 Version 002  
Chandra X-Ray Center

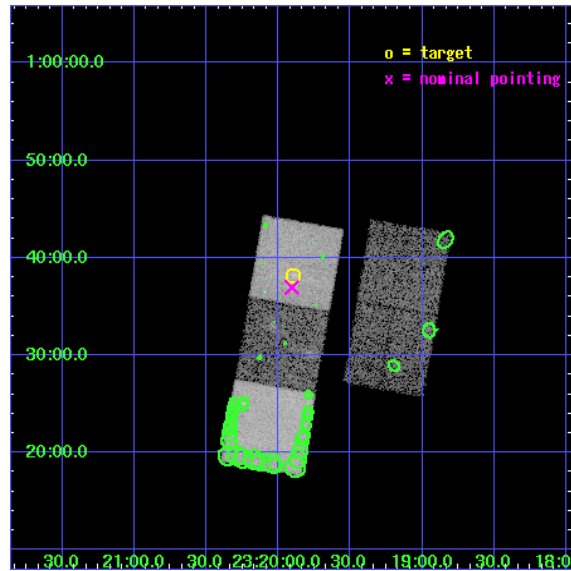
L2 Processing Date : Mar 31 2006

## Contents

<b>1</b>	<b>Front</b>	<b>2</b>
<b>2</b>	<b>OBI</b>	<b>3</b>
2.1	OBI . . . . .	3
2.1.1	Images . . . . .	3
2.1.2	Bias . . . . .	3
2.1.3	Parameters . . . . .	4
2.1.4	Events . . . . .	4
2.2	Compared Parameters . . . . .	5
2.3	Aspect . . . . .	6
2.4	Star Slots . . . . .	9
2.4.1	Slot 3 . . . . .	9
2.4.2	Slot 4 . . . . .	10
2.4.3	Slot 5 . . . . .	11
2.4.4	Slot 6 . . . . .	12
2.4.5	Slot 7 . . . . .	13
2.5	FID Slots . . . . .	14
2.5.1	Slot 0 . . . . .	14
2.5.2	Slot 1 . . . . .	15
2.5.3	Slot 2 . . . . .	16
<b>3</b>	<b>Point Sources</b>	<b>17</b>
<b>A</b>	<b>Summary</b>	<b>18</b>
A.1	Status . . . . .	18
A.2	Comments . . . . .	18

# 1 Front

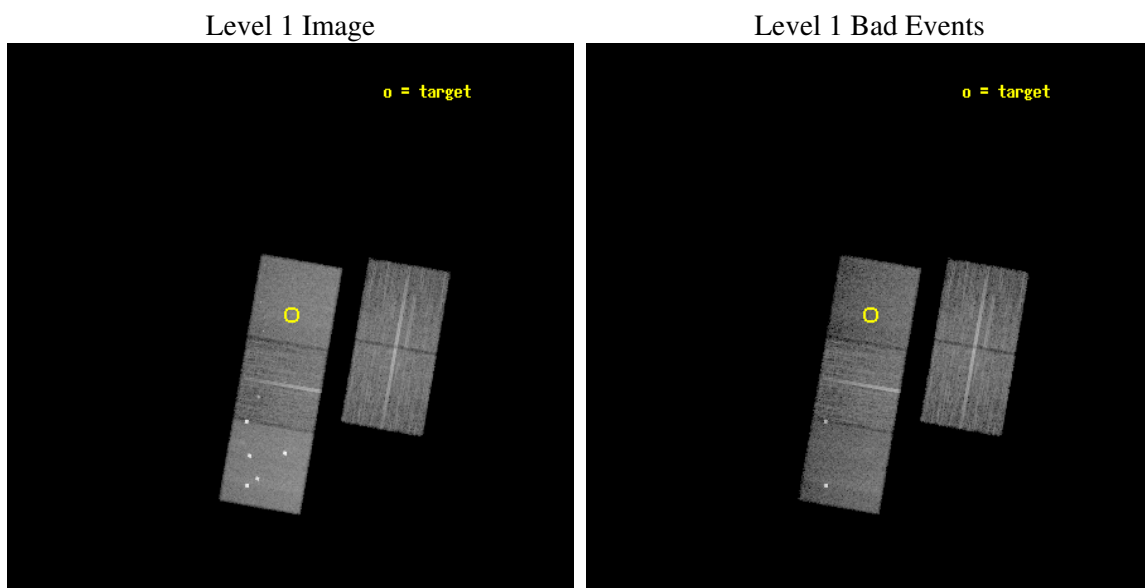
seq_num	800465
obs_id	7174
title	Cluster Strong Lensing at High Redshift
observer	Dr Michael Gladders
object	RCS2319.9+0038
dtcycle	0
cycle	P
ra_targ	349.974583
dec_targ	0.636556
ra_nom	349.97643018981
dec_nom	0.61588009584619
roll_nom	279.88939936785
revision	2
ontime	15186.8999708
livetime	14988.471942248
ontime2	15186.8999708
ontime3	15186.8999708
ontime5	15186.8999708
ontime6	15183.75905028
ontime7	15186.8999708
l2events	128869



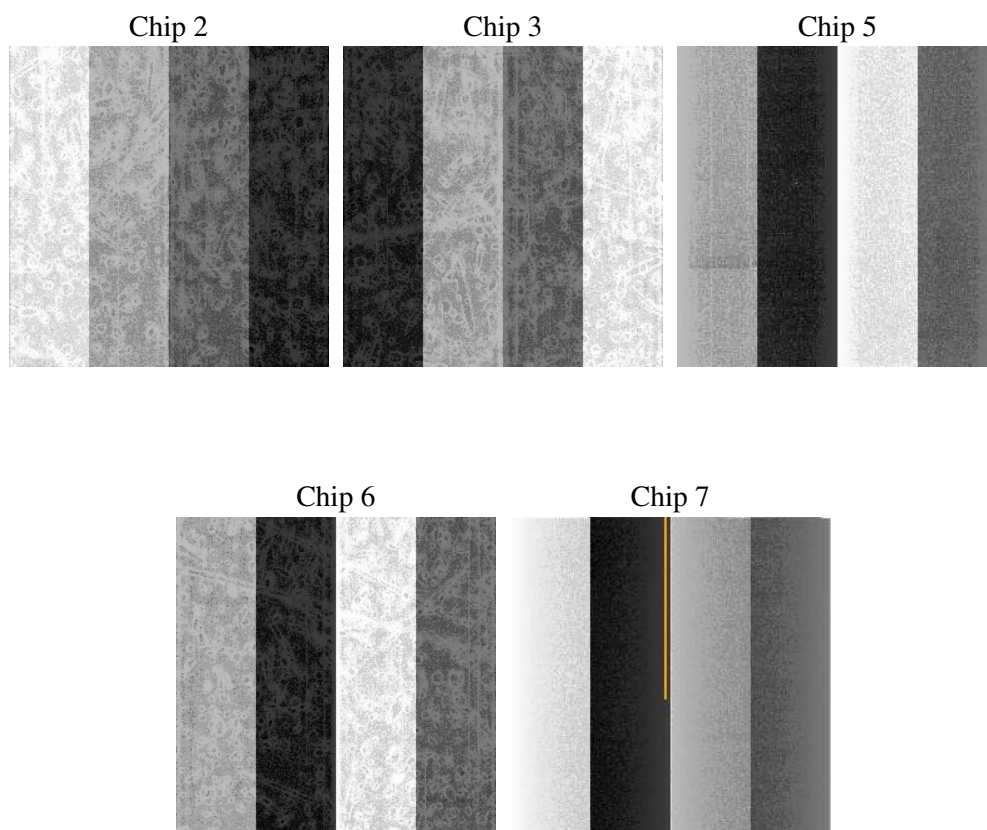
## 2 OBI

### 2.1 OBI

#### 2.1.1 Images



#### 2.1.2 Bias



### 2.1.3 Parameters

obi_num	0
ascdsver	7.6.7.1
caldsver	3.2.1
date	2006-03-31T15:36:06
revision	2

sched_exp_time	15000.000000
ontime	16088.254280537
ontime2	16088.254280537
ontime3	16088.254280537
ontime5	16088.254280537
ontime6	16085.113340139
ontime7	16088.254280537
l1events	558165

### 2.1.4 Events

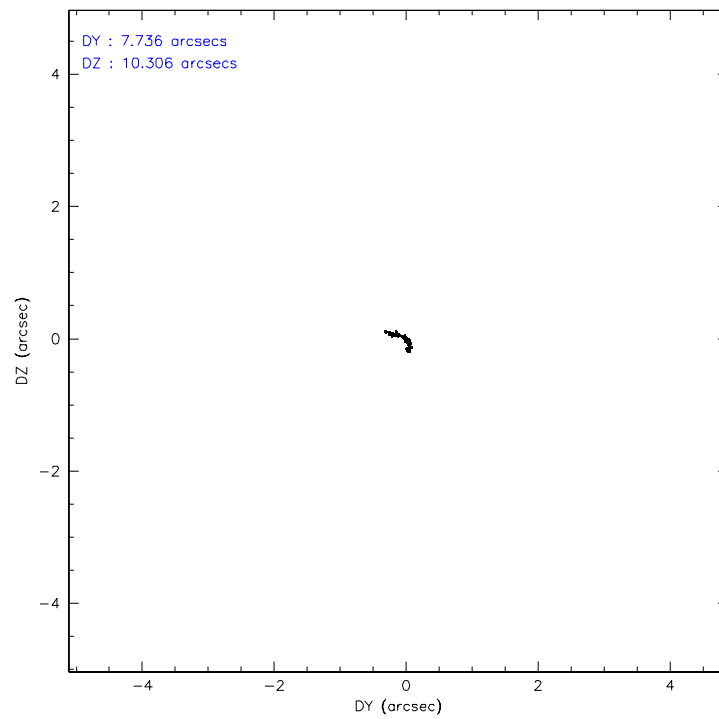
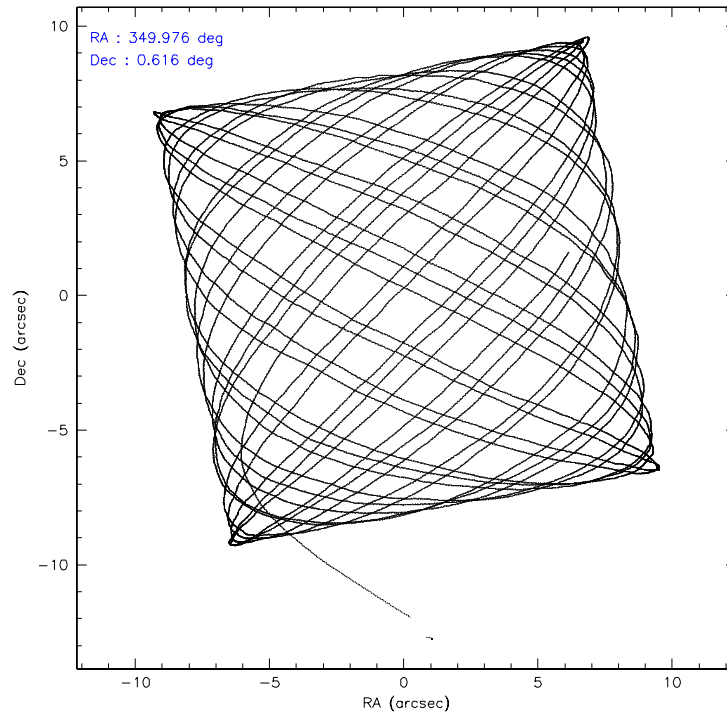
	ccd 2	ccd 3	ccd 5	ccd 6	ccd 7
level 1 events	100071	93190	153994	97195	113715
rejected events	91148	84545	78151	86479	67156
rejected %	91%	90%	50%	88%	59%

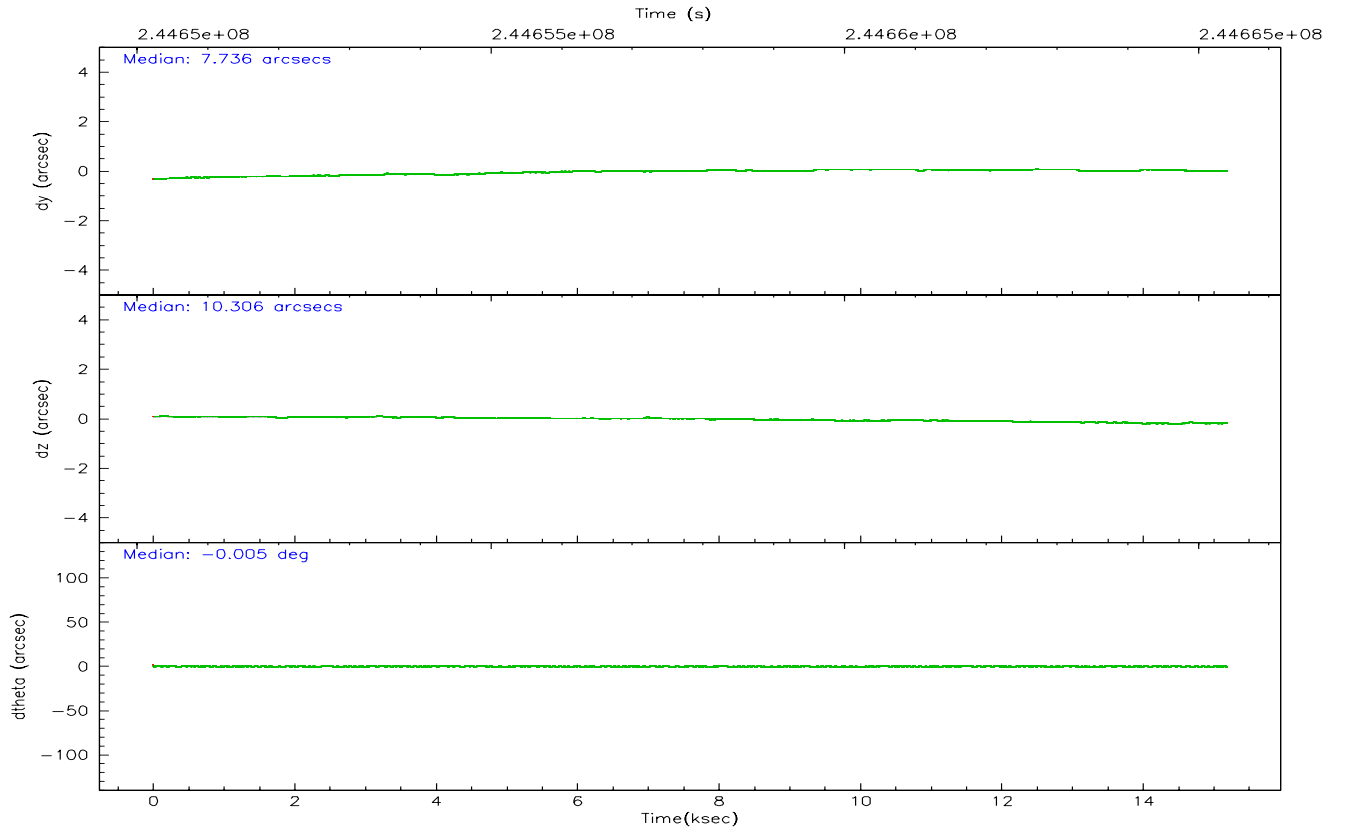
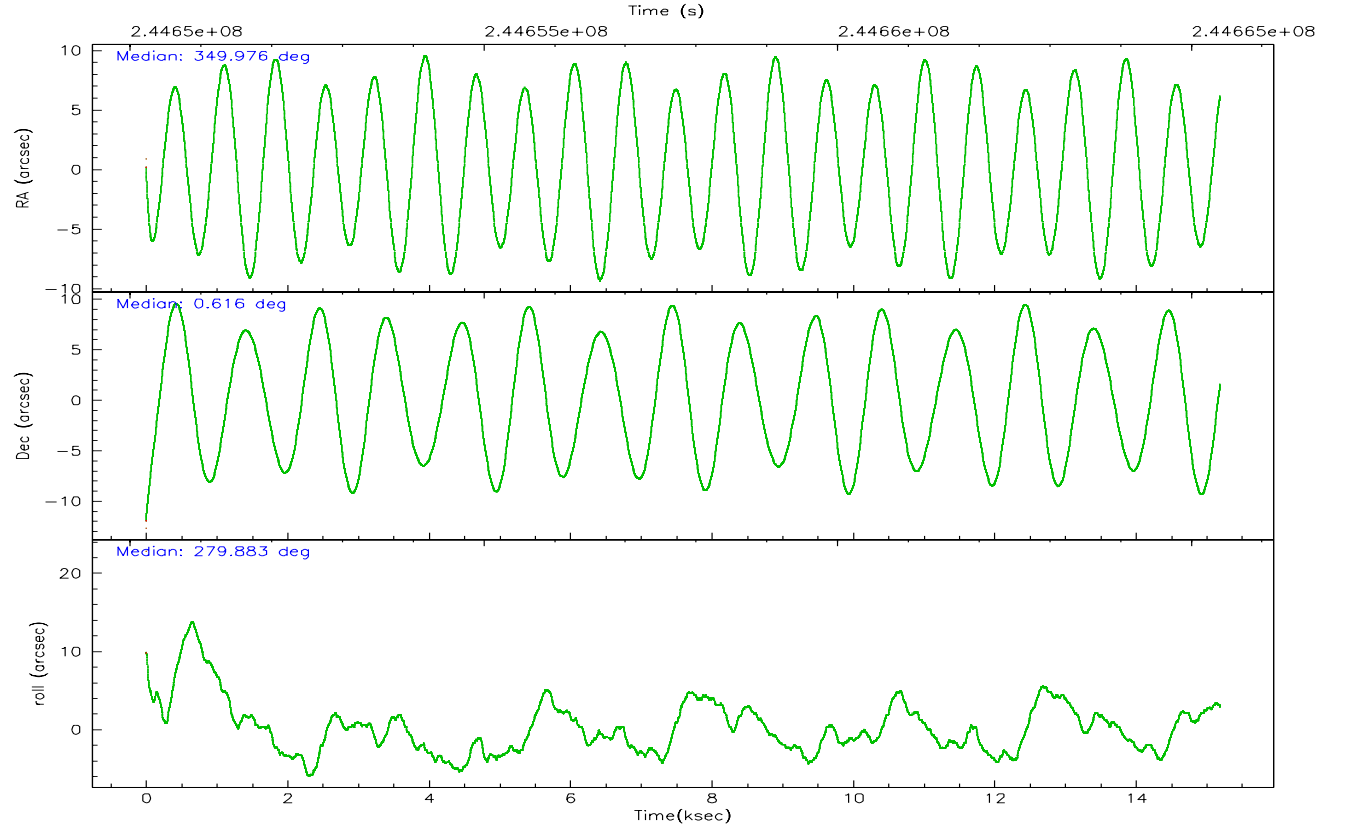
	ccd 2	ccd 3	ccd 5	ccd 6	ccd 7
grade 0 events	3400	3241	14116	4464	3095
	3%	3%	9%	4%	2%
grade 1 events	52	49	163	59	60
	0%	0%	0%	0%	0%
grade 2 events	2203	1944	21844	2247	12066
	2%	2%	14%	2%	10%
grade 3 events	1058	1088	2277	1176	2764
	1%	1%	1%	1%	2%
grade 4 events	1039	1054	2204	1146	2682
	1%	1%	1%	1%	2%
grade 5 events	3152	3897	8283	4124	8252
	3%	4%	5%	4%	7%
grade 6 events	1773	1844	39171	2271	28480
	1%	1%	25%	2%	25%
grade 7 events	87394	80073	65936	81708	56316
	87%	85%	42%	84%	49%

## 2.2 Compared Parameters

Parameter	Planned	Actual	Parameter	Planned	Actual
Instrument	ACIS	ACIS	Obspar format version number	6	6
Detector	ACIS-23567	ACIS-23567	Obspar file type	PREDICTED	ACTUAL
Grating	NONE	NONE	Obspar update status	NONE	UPDATED
Data mode	VFAINT	VFAINT	On-chip summing requested	N	N
Observation mode	POINTING	POINTING	Subarray requested	NONE	NONE
Pointing RA	349.958688	349.9764301898146	Alternating exposures requested	N	N
Pointing Dec	0.636535	0.6158800958461915	Primary exposure time	0.000000	3.1
Pointing Roll	279.732957	279.8893993678527			
SIM focus pos (mm)	-0.684267	-0.6828225247311905			
SIM defocus (mm)	0	0.001444936568705701			
SIM translation stage pos (mm)	-190.132523	-190.1400660498719			
SIM translation stage offset (mm)	0	0.00754346686406393			
Observation start time	244650411.184000	244648902.29279			
Observation start date	2005-10-02T14:25:47	2005-10-02T14:01:42			
Observation end time	244665411.184000	244665904.48107			
Observation end date	2005-10-02T18:35:47	2005-10-02T18:45:04			
Read mode	TIMED	TIMED			

## 2.3 Aspect





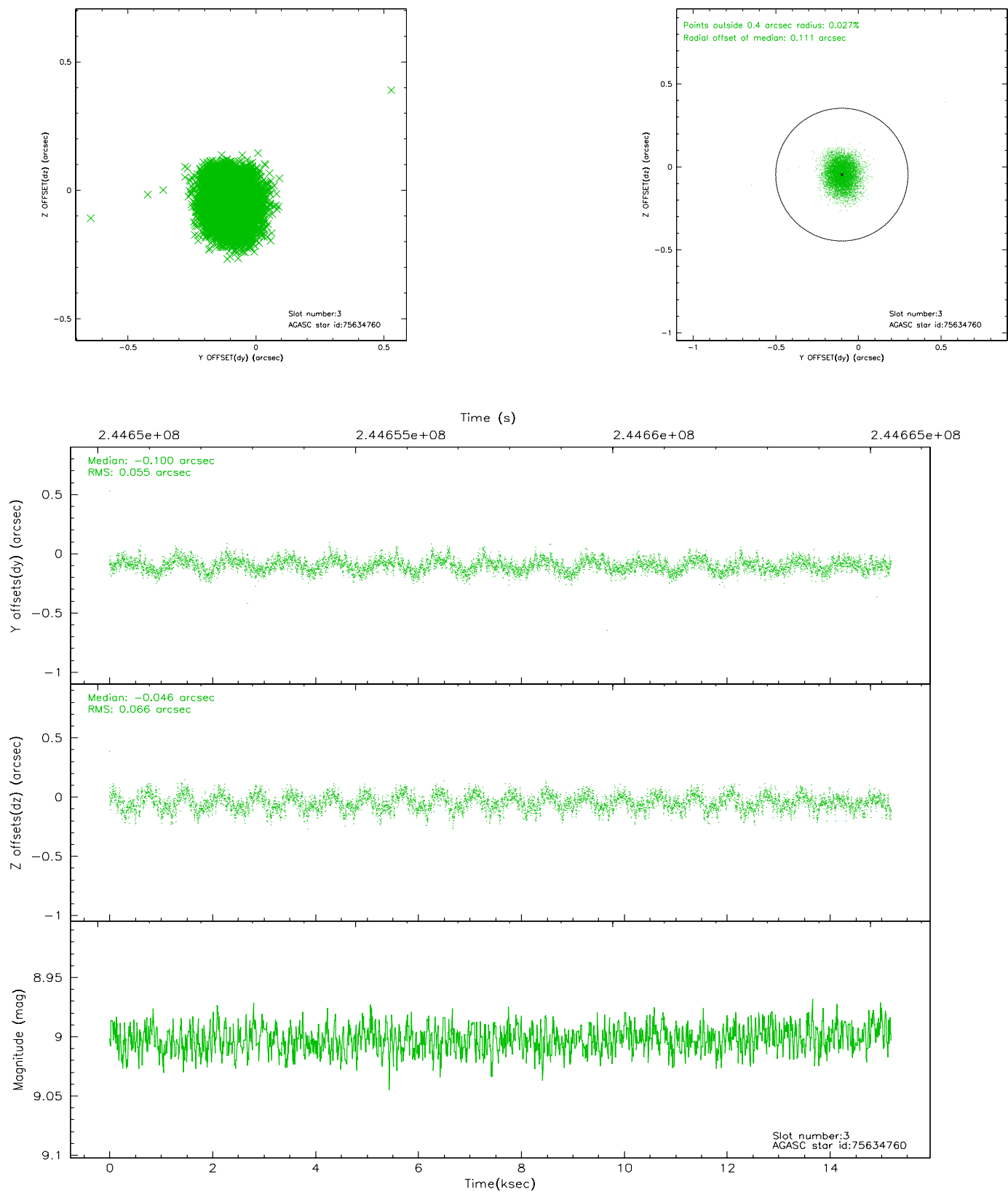
### Slot Statistics

slot	status	id	mag	n_pts	med_dy	med_dz	dr1	dr2	ra	dec	mean_y	mean_z
0	FID	ACIS-S-2	7.10	3706	-0.034	0.006	0.008	0.013	0.000000	0.000000	-760.45	-1731.55
1	FID	ACIS-S-4	7.21	3706	0.065	0.015	0.009	0.016	0.000000	0.000000	2152.74	176.71
2	FID	ACIS-S-5	7.23	3706	-0.062	-0.012	0.010	0.018	0.000000	0.000000	-1812.99	170.59
3	GUIDE	75634760	9.00	7412	-0.100	-0.046	0.091	0.146	349.528153	0.494791	241.28	-1613.71
4	GUIDE	75636968	9.27	7411	-0.037	0.012	0.092	0.147	349.584767	0.524969	168.72	-1394.55
5	GUIDE	75765576	10.01	7404	0.066	-0.011	0.143	0.240	350.147829	0.719056	-177.36	721.19
6	GUIDE	75769624	9.40	7406	-0.018	0.059	0.145	0.236	350.180830	0.159527	1827.94	498.42
7	GUIDE	687220280	9.38	7408	0.091	-0.021	0.125	0.200	349.573474	-0.035729	2151.77	-1775.62

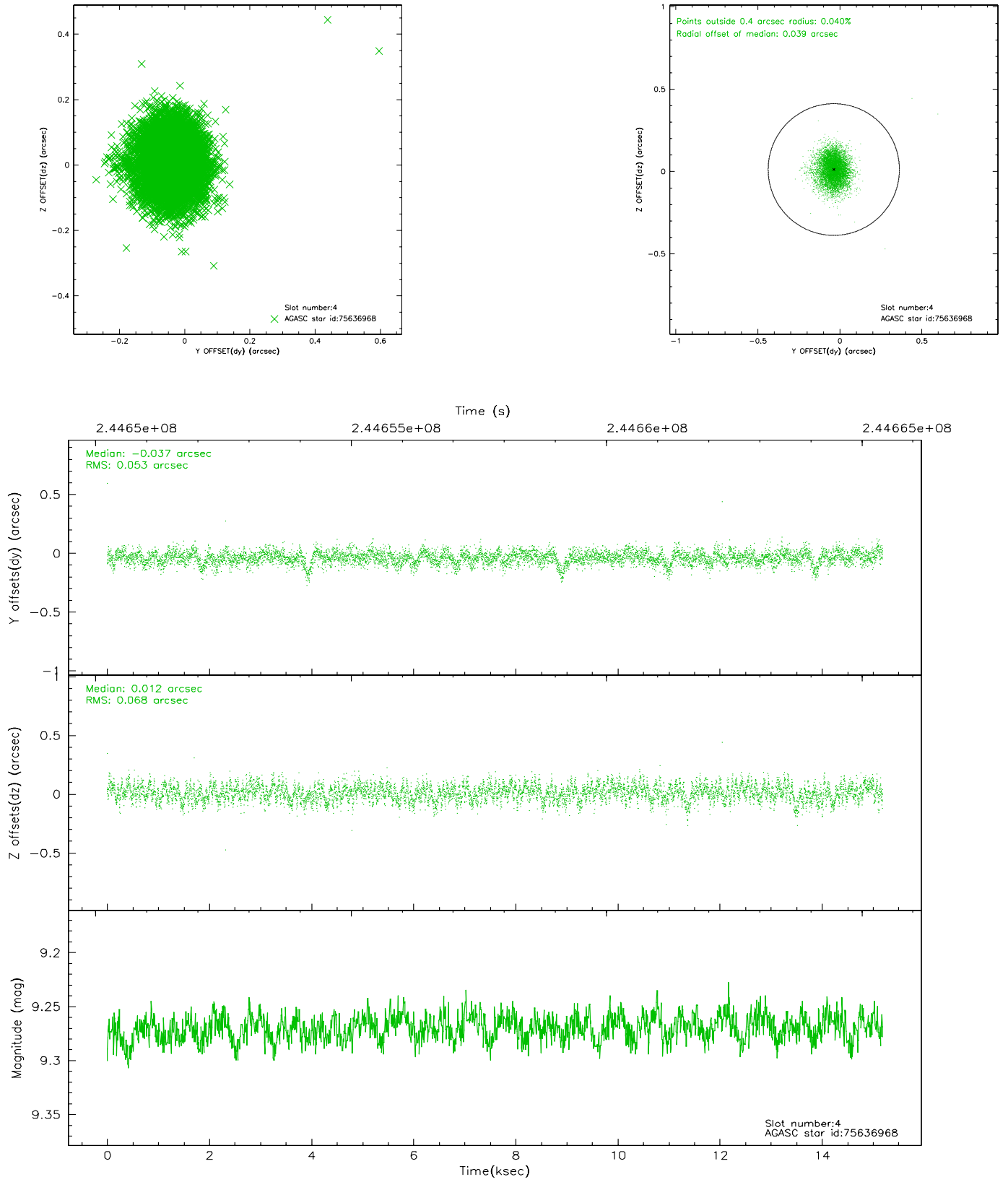


## 2.4 Star Slots

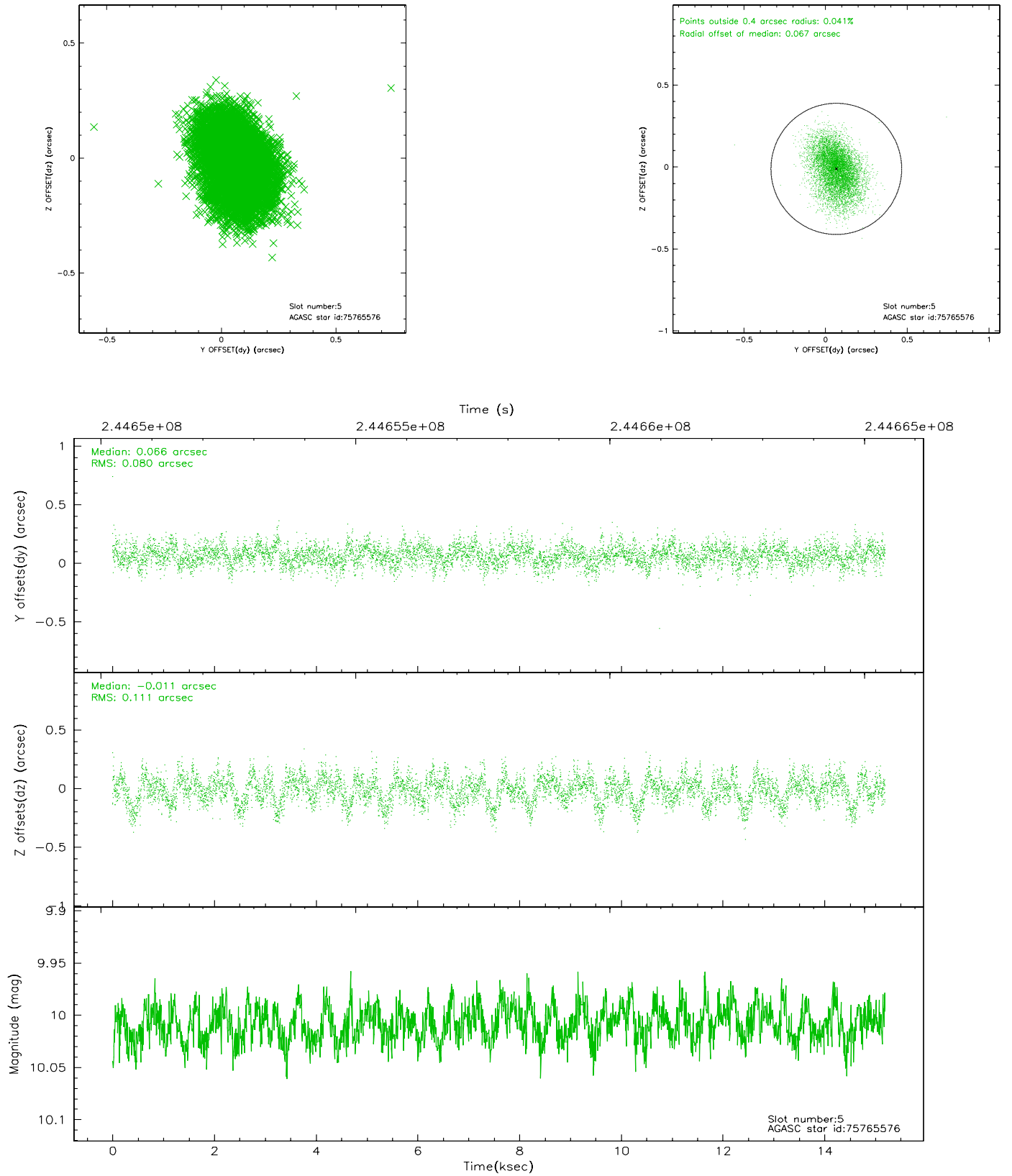
### 2.4.1 Slot 3



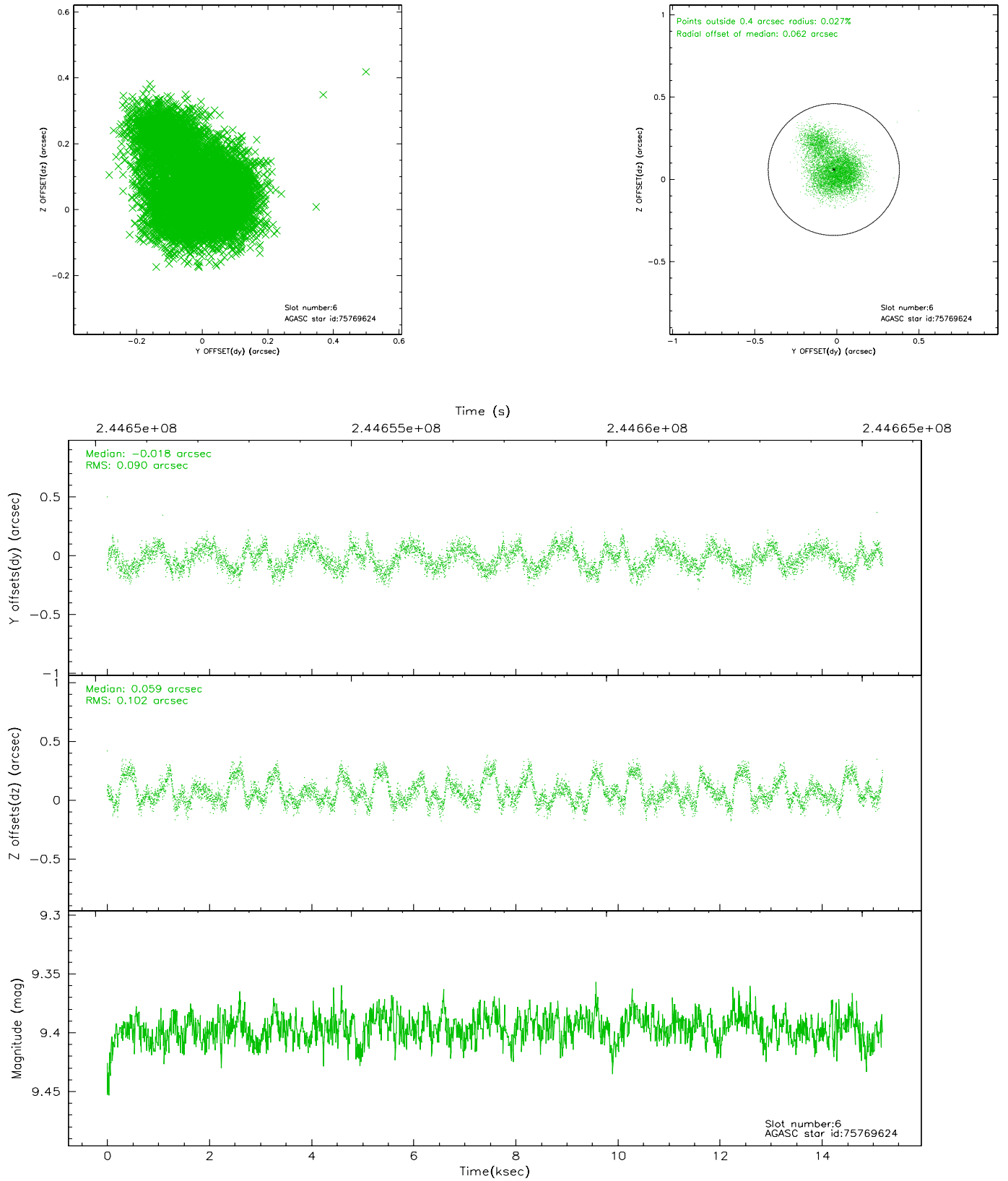
## 2.4.2 Slot 4



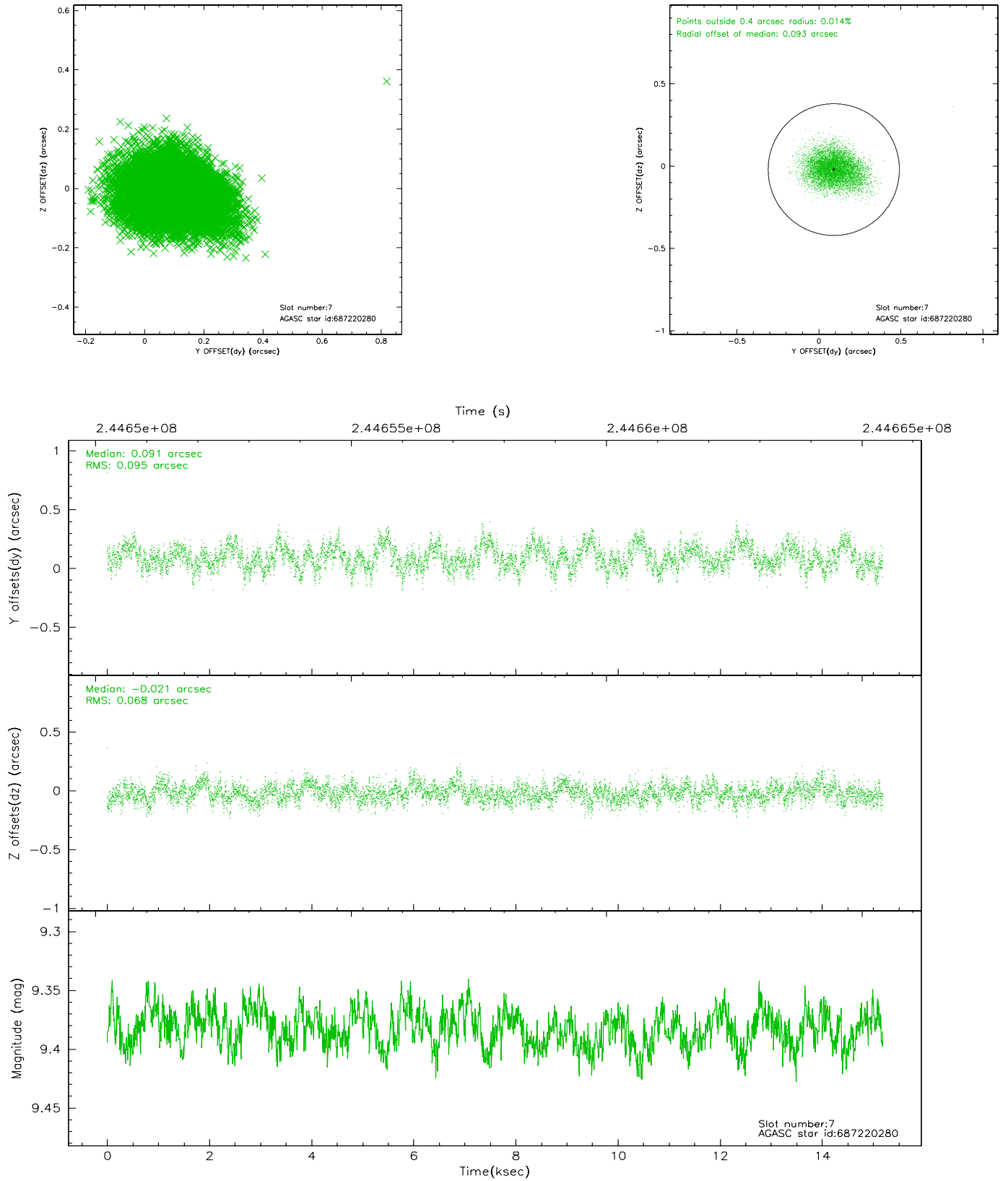
### 2.4.3 Slot 5



## 2.4.4 Slot 6

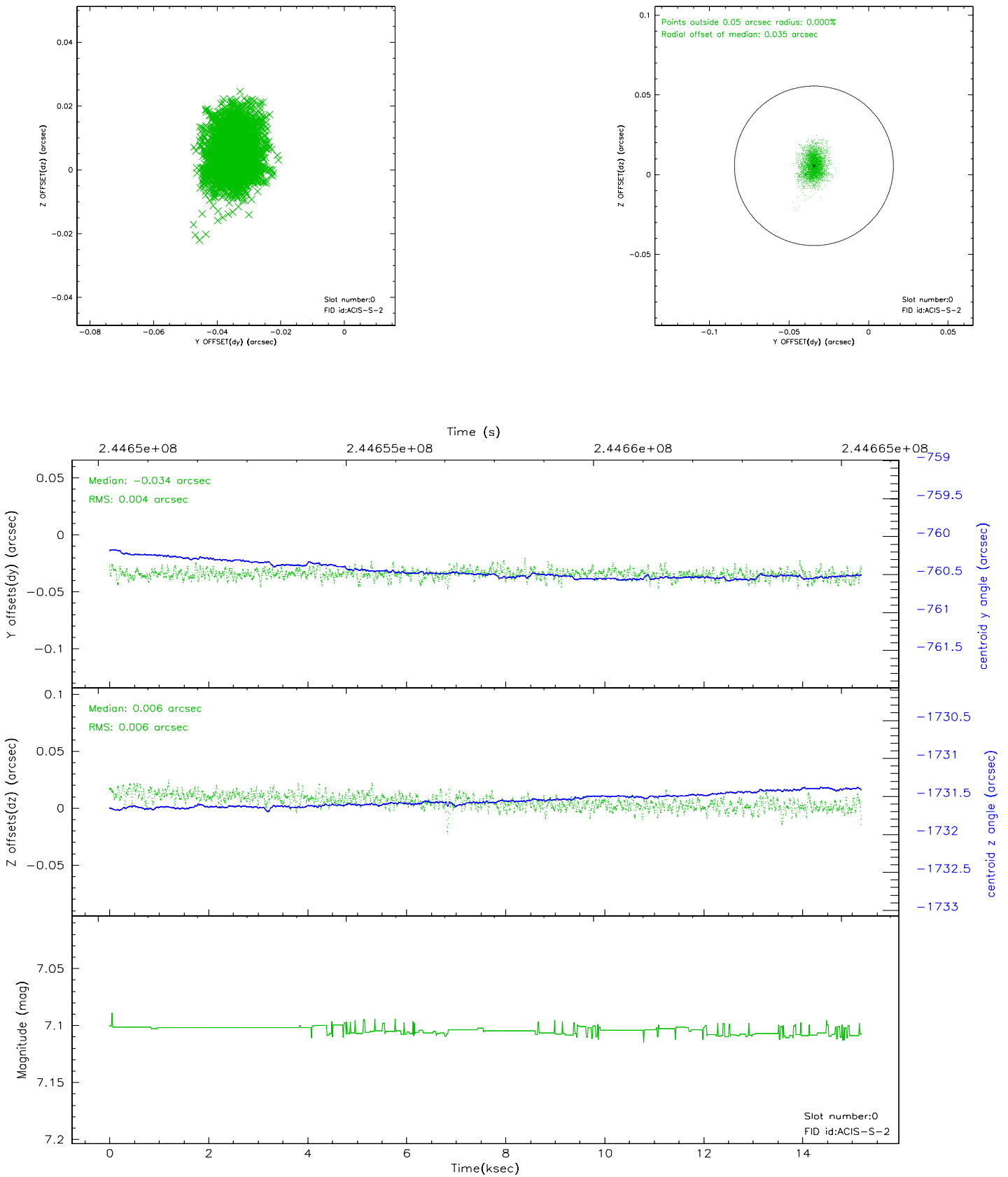


## 2.4.5 Slot 7

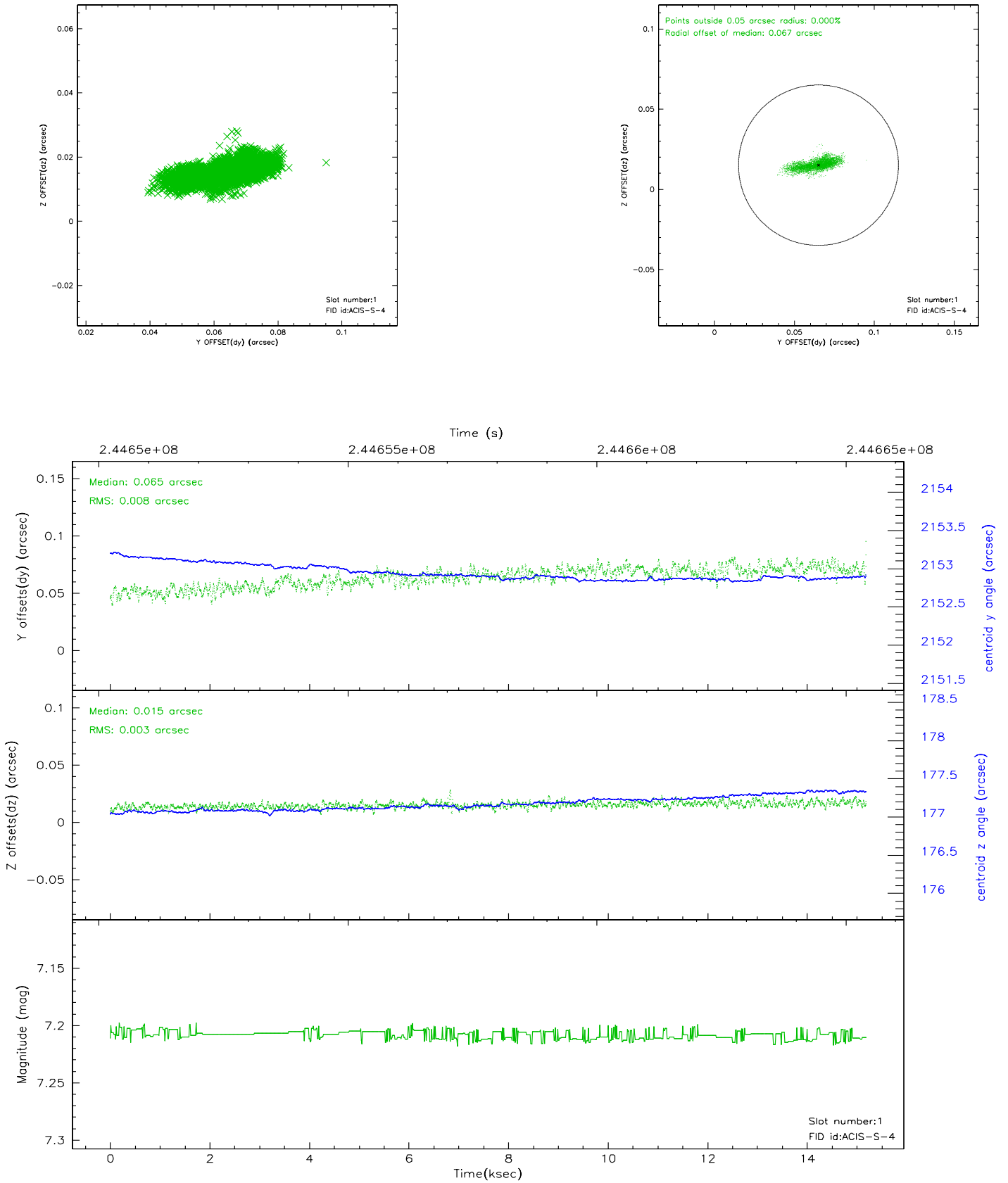


## 2.5 FID Slots

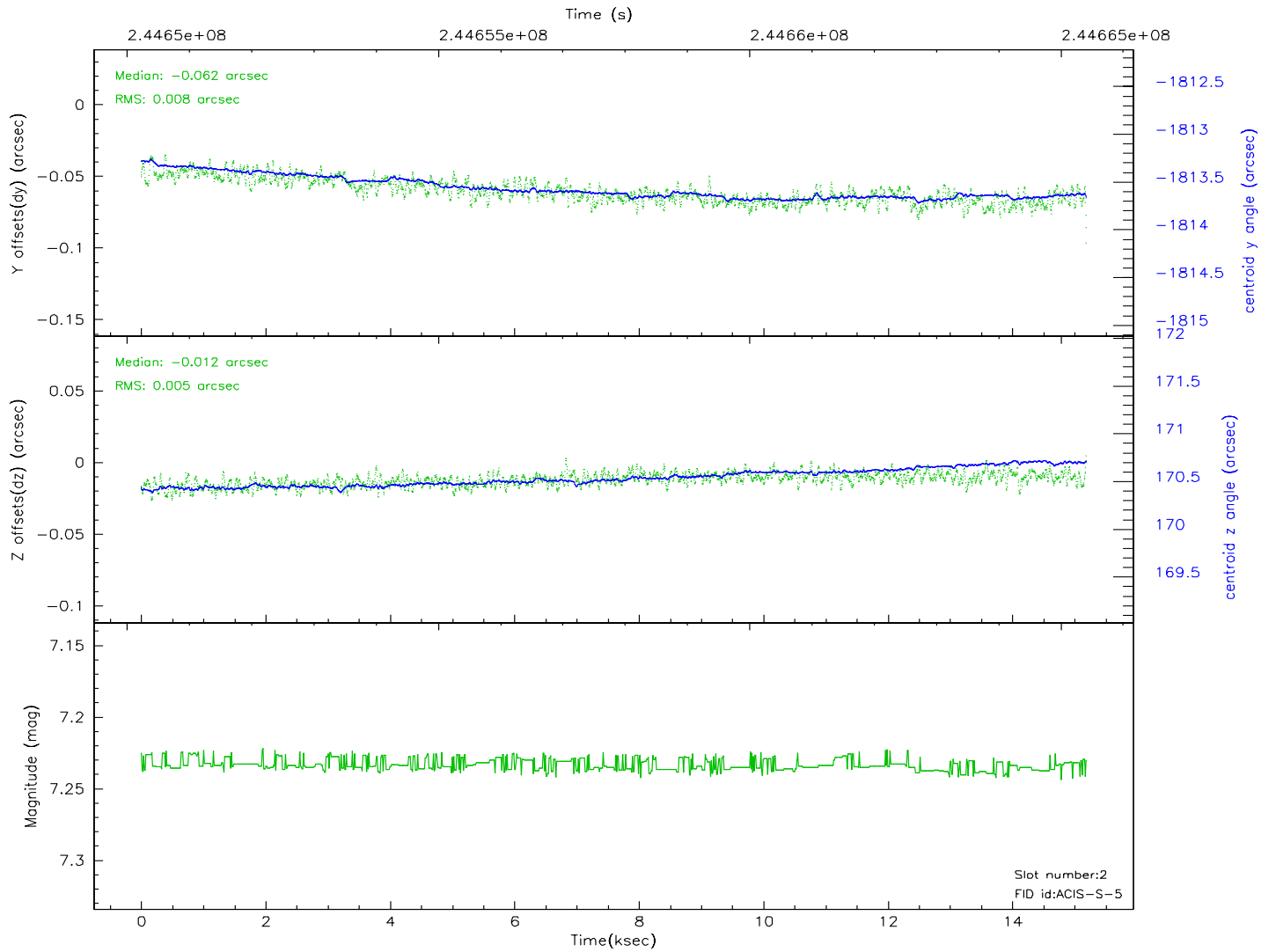
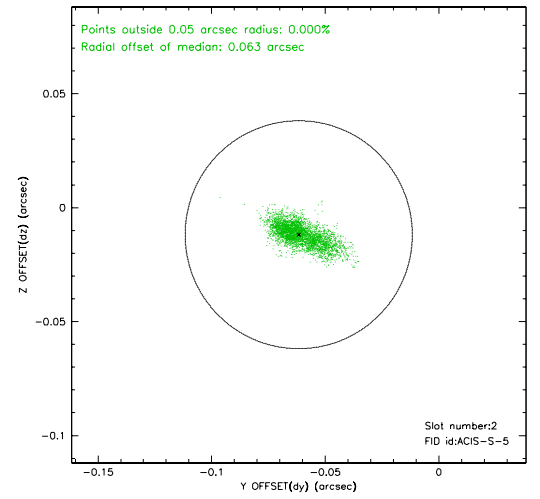
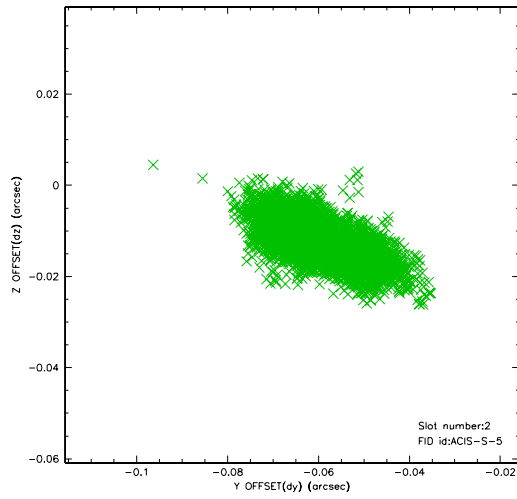
### 2.5.1 Slot 0



## 2.5.2 Slot 1

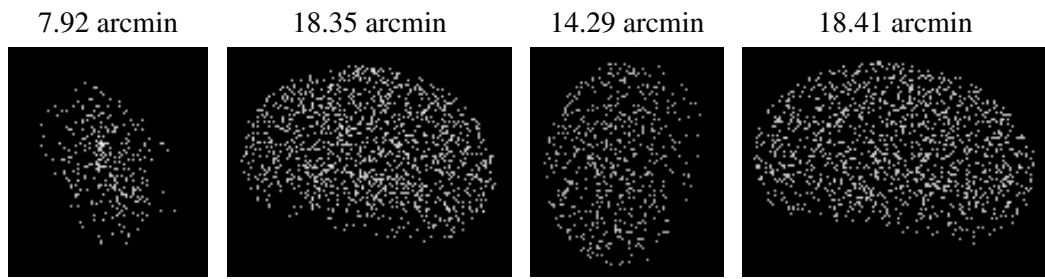


### 2.5.3 Slot 2





### 3 Point Sources



## A Summary

### A.1 Status

V&V Scientist	Beth Sundheim
V&V Date (YYYY-MM-DD)	2006.03.31
V&V Edition	1
V&V Disposition and Status	OK
V&V Charge Time	15.18689

### A.2 Comments

Focal plane temperature climbs steadily during observation, and is elevated during final ~5 ksec.