

# V&V Reference Report

## L2 ASCDS Version : 8.4.3

Observation 6944 - L2 Version 2  
Chandra X-Ray Center

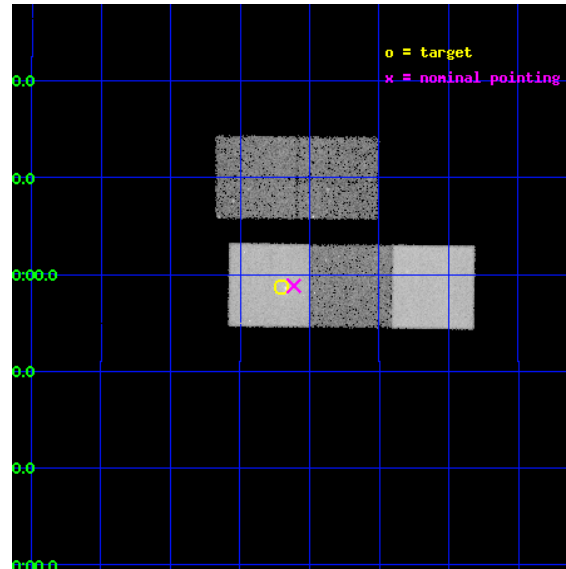
L2 Processing Date : Mar 30 2012

## Contents

<b>1</b>	<b>Front</b>	<b>2</b>
<b>2</b>	<b>OBI</b>	<b>3</b>
2.1	OBI . . . . .	3
2.1.1	Images . . . . .	3
2.1.2	Bias . . . . .	3
2.1.3	Parameters . . . . .	4
2.1.4	Events . . . . .	4
2.2	Compared Parameters . . . . .	5
2.3	Aspect . . . . .	6
2.4	Star Slots . . . . .	9
2.4.1	Slot 3 . . . . .	9
2.4.2	Slot 4 . . . . .	10
2.4.3	Slot 5 . . . . .	11
2.4.4	Slot 6 . . . . .	12
2.4.5	Slot 7 . . . . .	13
2.5	FID Slots . . . . .	14
2.5.1	Slot 0 . . . . .	14
2.5.2	Slot 1 . . . . .	15
2.5.3	Slot 2 . . . . .	16
<b>A</b>	<b>Summary</b>	<b>17</b>
A.1	Status . . . . .	17
A.2	Comments . . . . .	17

# 1 Front

seq_num	800577	Sequence number
obs_id	6944	Observation id
title	The Cosmological Formation of Galaxy Groups	Proposal title
observer	Dr. DAVID BUOTE	Principal investigator
object	RXC J1324.1+1358	Source name
dtcycle	0	&#160
cycle	P	events from which exps? Prim/Second/Both
ra_targ	201.049583	Observer's specified target RA [deg]
dec_targ	13.979167	Observer's specified target Dec [deg]
ra_nom	201.02823359348	Nominal RA [deg]
dec_nom	13.9806689131	Nominal Dec [deg]
roll_nom	180.6127048984	Nominal Roll [deg]
revision	2	Processing version of data
ontime	21182.299959242	Sum of GTIs [s]
livetime	20905.537616092	Livetime [s]
ontime2	21182.299959242	Sum of GTIs [s]
ontime3	21182.299959242	Sum of GTIs [s]
ontime5	21182.299959242	Sum of GTIs [s]
ontime6	21182.299959242	Sum of GTIs [s]
ontime7	21182.299959242	Sum of GTIs [s]
l2events	222357	Number of level 2 events

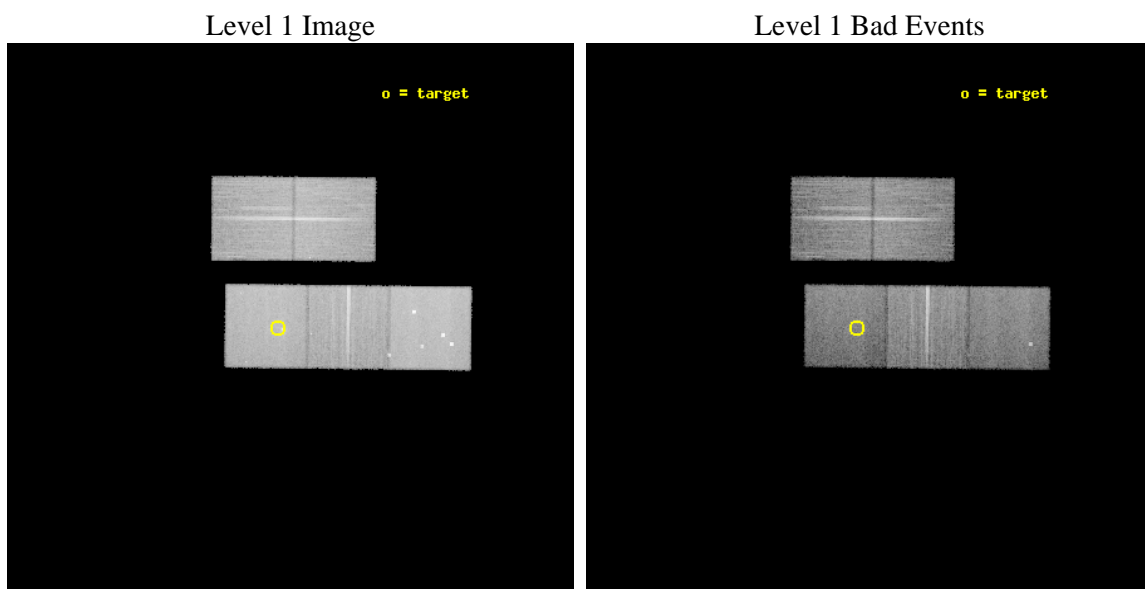




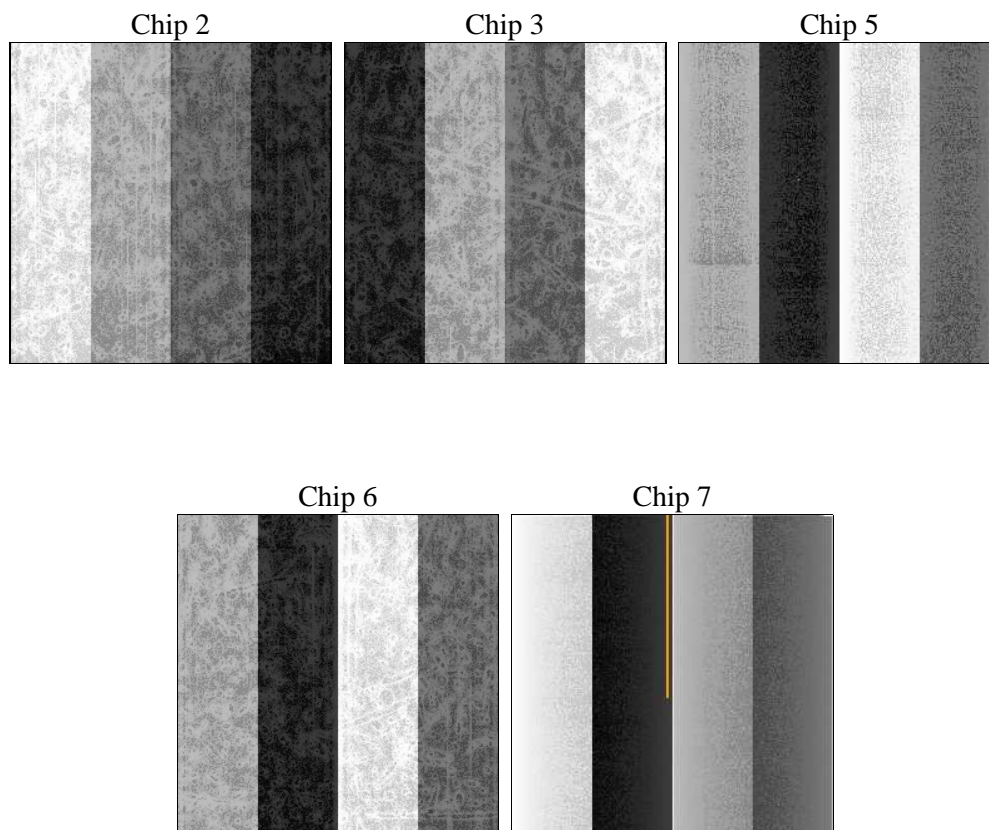
## 2 OBI

### 2.1 OBI

#### 2.1.1 Images



#### 2.1.2 Bias



### 2.1.3 Parameters

obi_num	0	Obi number	sched_exp_time	21000.000000	[s] Scheduled observation exposure time
ascdsver	8.4.3	Processing system revision	ontime	21182.299959242	Sum of GTIs [s]
caldsver	4.4.8	&#160	ontime2	21182.299959242	Sum of GTIs [s]
date	2012-03-30T05:04:52	Date and time of file creation	ontime3	21182.299959242	Sum of GTIs [s]
revision	2	Processing version of data	ontime5	21182.299959242	Sum of GTIs [s]
			ontime6	21182.299959242	Sum of GTIs [s]
			ontime7	21182.299959242	Sum of GTIs [s]
			l1events	879908	Number of level 1 events

### 2.1.4 Events

	ccd 2	ccd 3	ccd 5	ccd 6	ccd 7
level 1 events	164541	154962	219791	159171	181443
rejected events	149181	140456	110354	142342	95369
rejected %	90%	90%	50%	89%	52%

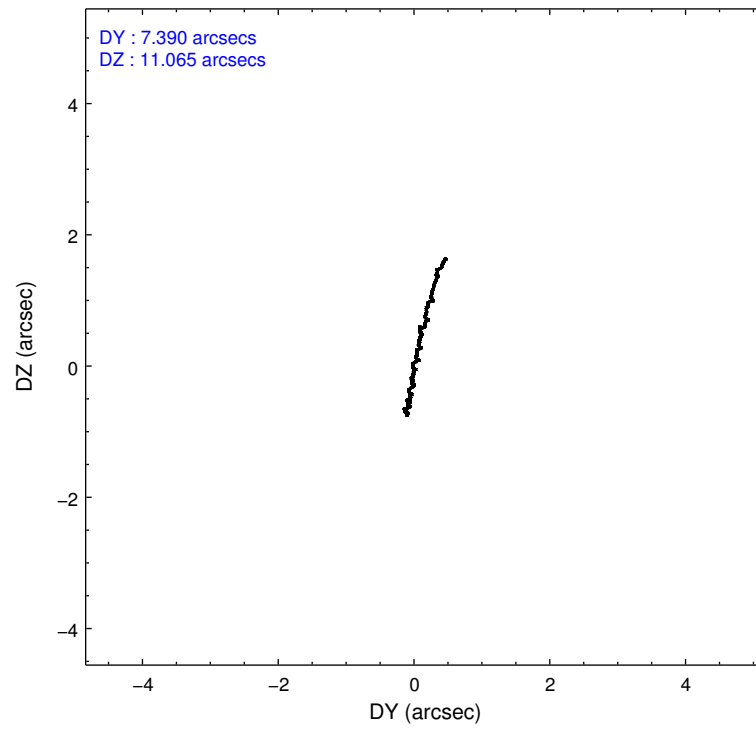
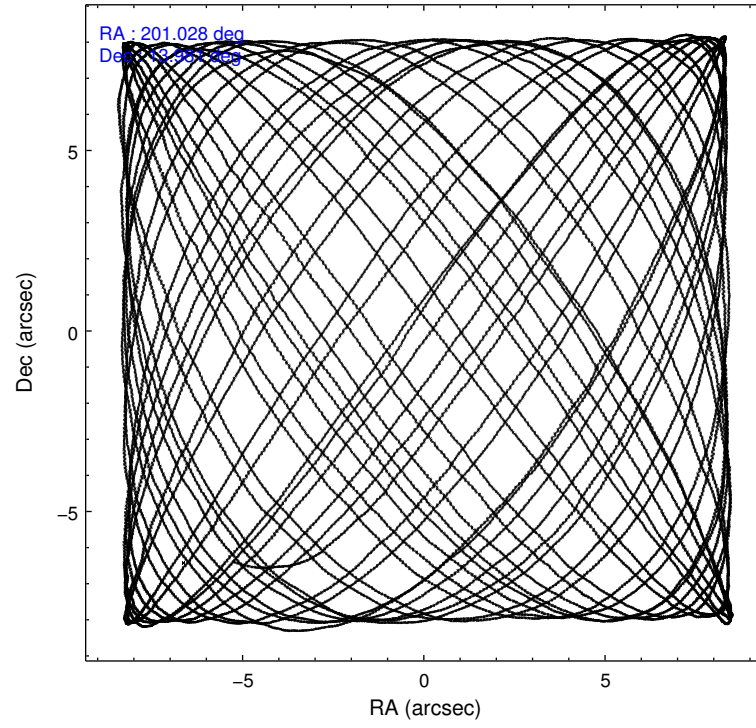
	ccd 2	ccd 3	ccd 5	ccd 6	ccd 7
grade 0 events	5782	5257	13343	6306	9790
	3%	3%	6%	3%	5%
grade 1 events	85	83	244	83	157
	0%	0%	0%	0%	0%
grade 2 events	3516	3128	32401	3654	17893
	2%	2%	14%	2%	9%
grade 3 events	1653	1634	4555	1755	8413
	1%	1%	2%	1%	4%
grade 4 events	1703	1651	4355	1822	8085
	1%	1%	1%	1%	4%
grade 5 events	4866	5897	17120	6395	18761
	2%	3%	7%	4%	10%
grade 6 events	2733	2875	55023	3330	42067
	1%	1%	25%	2%	23%
grade 7 events	144203	134437	92750	135826	76277
	87%	86%	42%	85%	42%

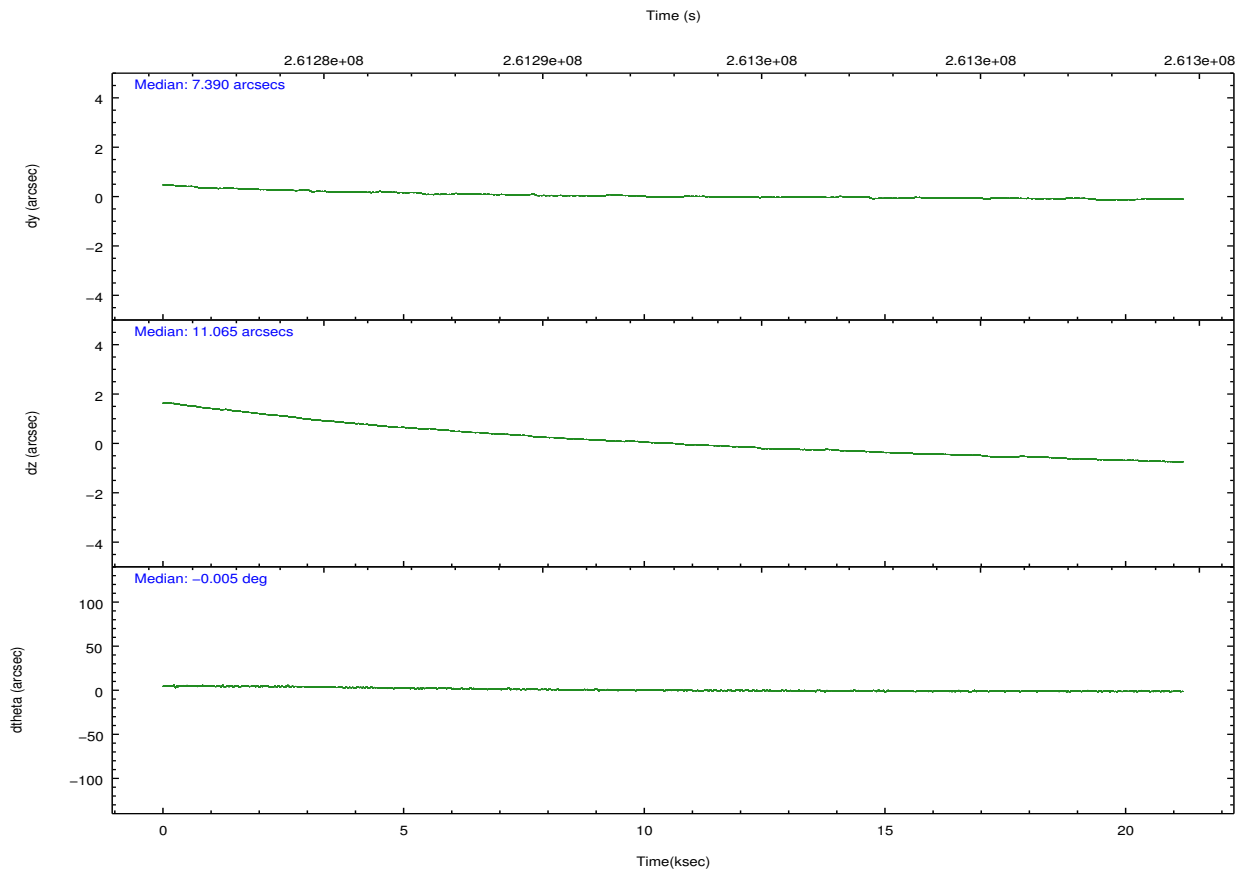
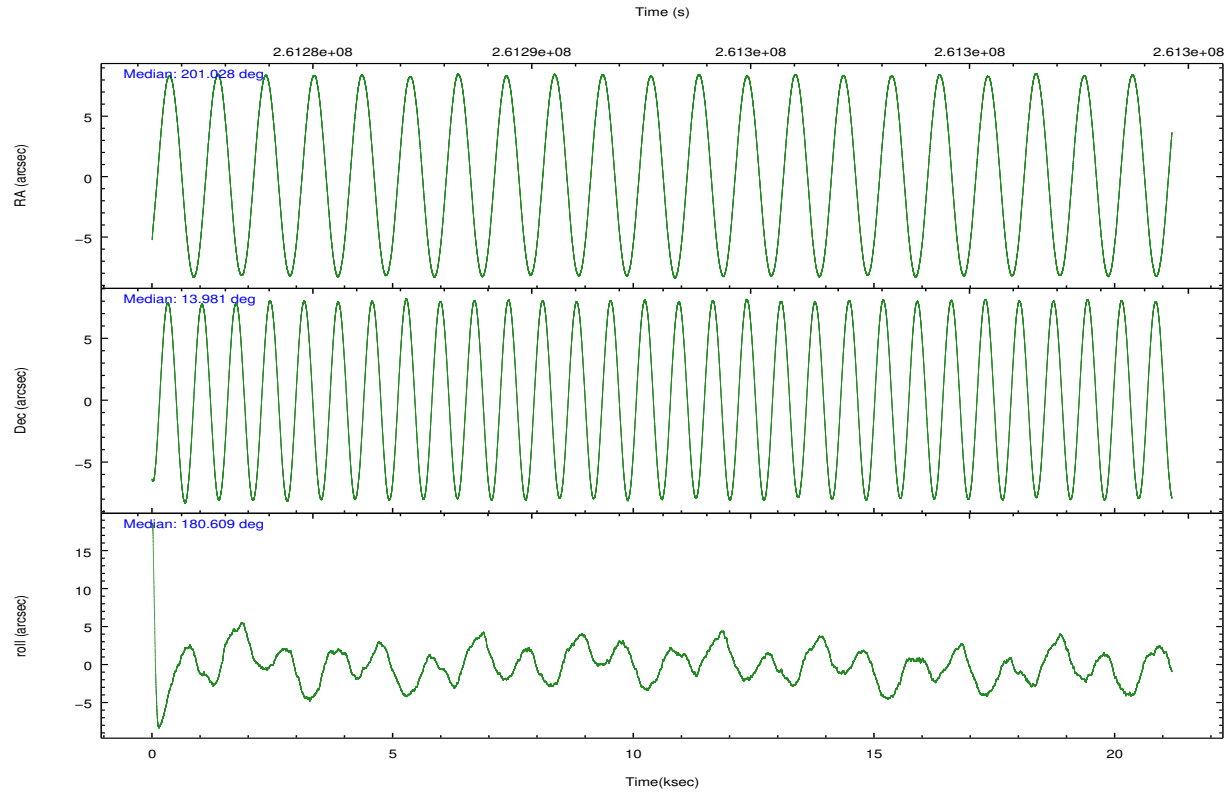
## 2.2 Compared Parameters

Parameter	Planned	Actual
Instrument	ACIS	ACIS
Detector	ACIS-23567	ACIS-23567
Grating	NONE	NONE
Data mode	VFAINT	VFAINT
Observation mode	POINTING	POINTING
[deg] Pointing RA	201.052204	201.0282335934774
[deg] Pointing Dec	13.994859	13.98066891310002
[deg] Pointing Roll	180.450277	180.6127048983953
[mm] SIM focus pos	-0.684267	-0.6828225247311905
[mm] SIM defocus	0	0.001444936568705701
[mm] SIM translation stage pos	-190.132523	-190.1400660498719
[mm] SIM translation stage offset	0	0.00754346686406393
[s] Observation start time (MET)	261282575.184000	261281551.92571
Observation start date	2006-04-13T02:28:30	2006-04-13T02:12:31
[s] Observation end time (MET)	261303575.184000	261305048.00181
Observation end date	2006-04-13T08:18:30	2006-04-13T08:44:08
Read mode	TIMED	TIMED

Parameter	Planned	Actual
Obspar format version number	7	7
Obspar file type	PREDICTED	ACTUAL
Obspar update status	NONE	UPDATED
Number of optional ACIS chips dropped	0	0
On-chip summing requested	N	N
Subarray requested	NONE	NONE
Alternating exposures requested	N	N
[s] Primary exposure time	0.000000	3.1

## 2.3 Aspect



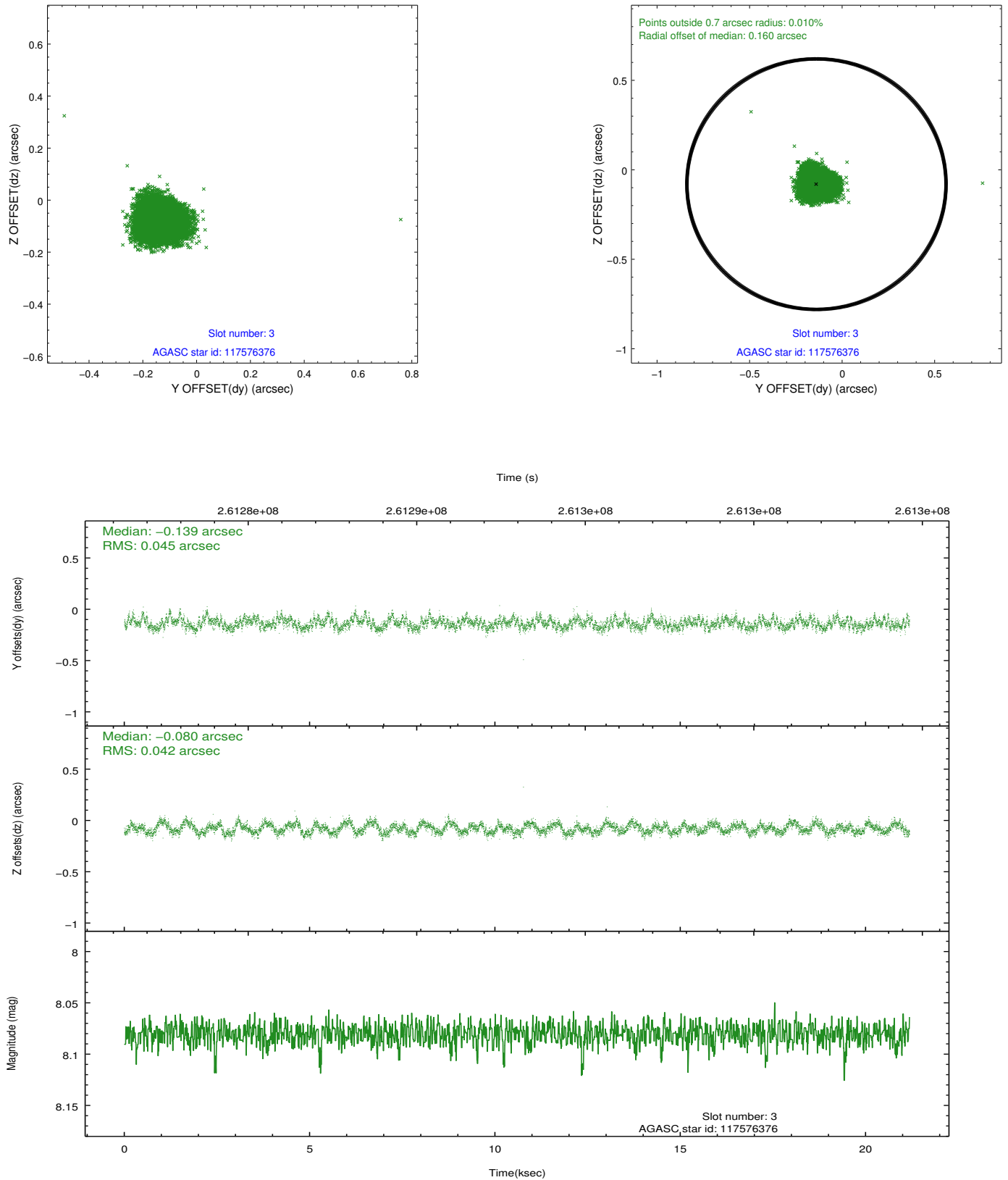


### Slot Statistics

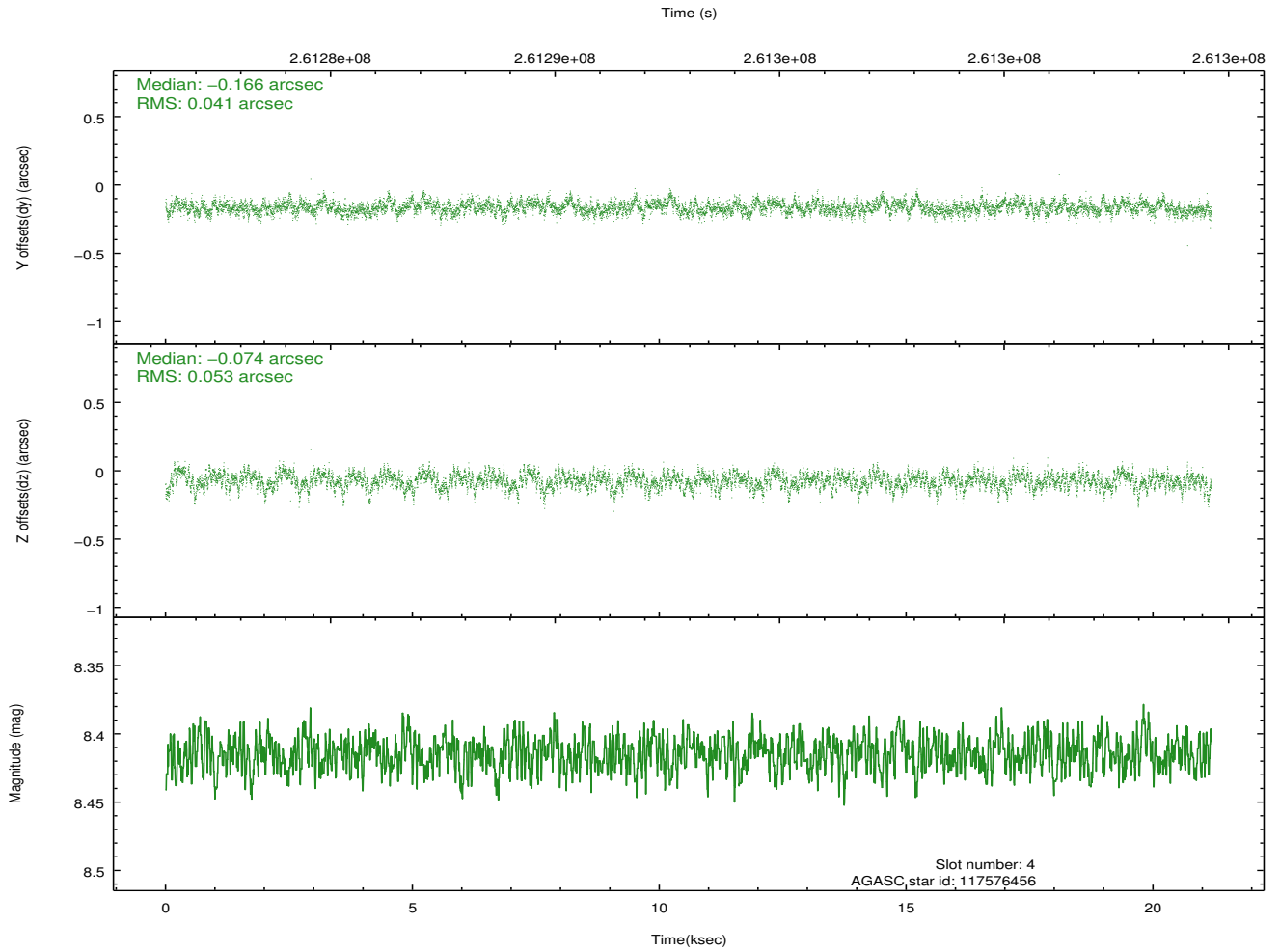
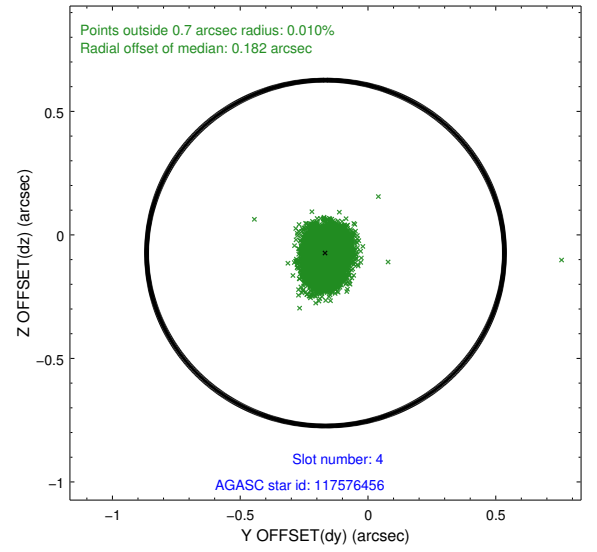
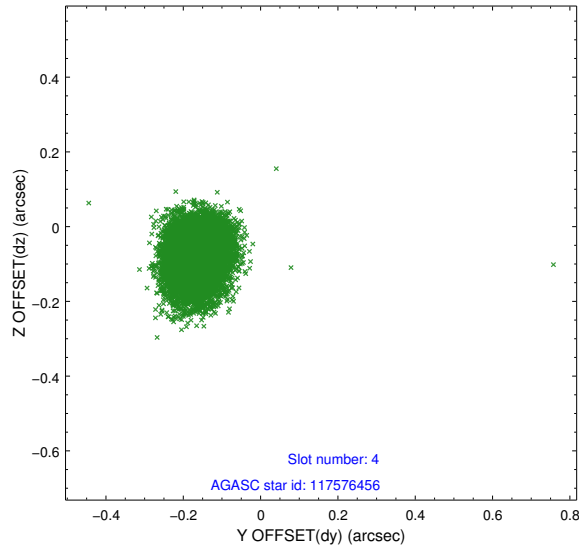
slot	status	id	mag	n_pts	med_dy	med_dz	dr1	dr2	ra	dec	mean_y	mean_z
0	FID	ACIS-S-2	7.11	5168	-0.045	-0.020	0.015	0.041	0.000000	0.000000	-760.22	-1732.51
1	FID	ACIS-S-4	7.21	5168	0.091	0.026	0.010	0.017	0.000000	0.000000	2153.08	175.89
2	FID	ACIS-S-5	7.23	5167	-0.079	0.001	0.013	0.044	0.000000	0.000000	-1812.92	169.68
3	GUIDE	117576376	8.08	10334	-0.139	-0.080	0.066	0.101	201.484124	13.674891	-1501.74	1162.41
4	GUIDE	117576456	8.41	10336	-0.166	-0.074	0.070	0.117	201.530586	14.346723	-1678.39	-1255.15
5	GUIDE	117576784	9.64	10328	0.080	0.065	0.102	0.162	200.692456	13.866260	1261.33	452.44
6	GUIDE	117577520	8.94	10328	0.079	0.074	0.096	0.150	201.161935	14.468034	-395.24	-1699.31
7	GUIDE	117572664	9.74	10325	0.136	0.005	0.200	0.296	200.729003	13.335880	1151.02	2362.76

## 2.4 Star Slots

### 2.4.1 Slot 3

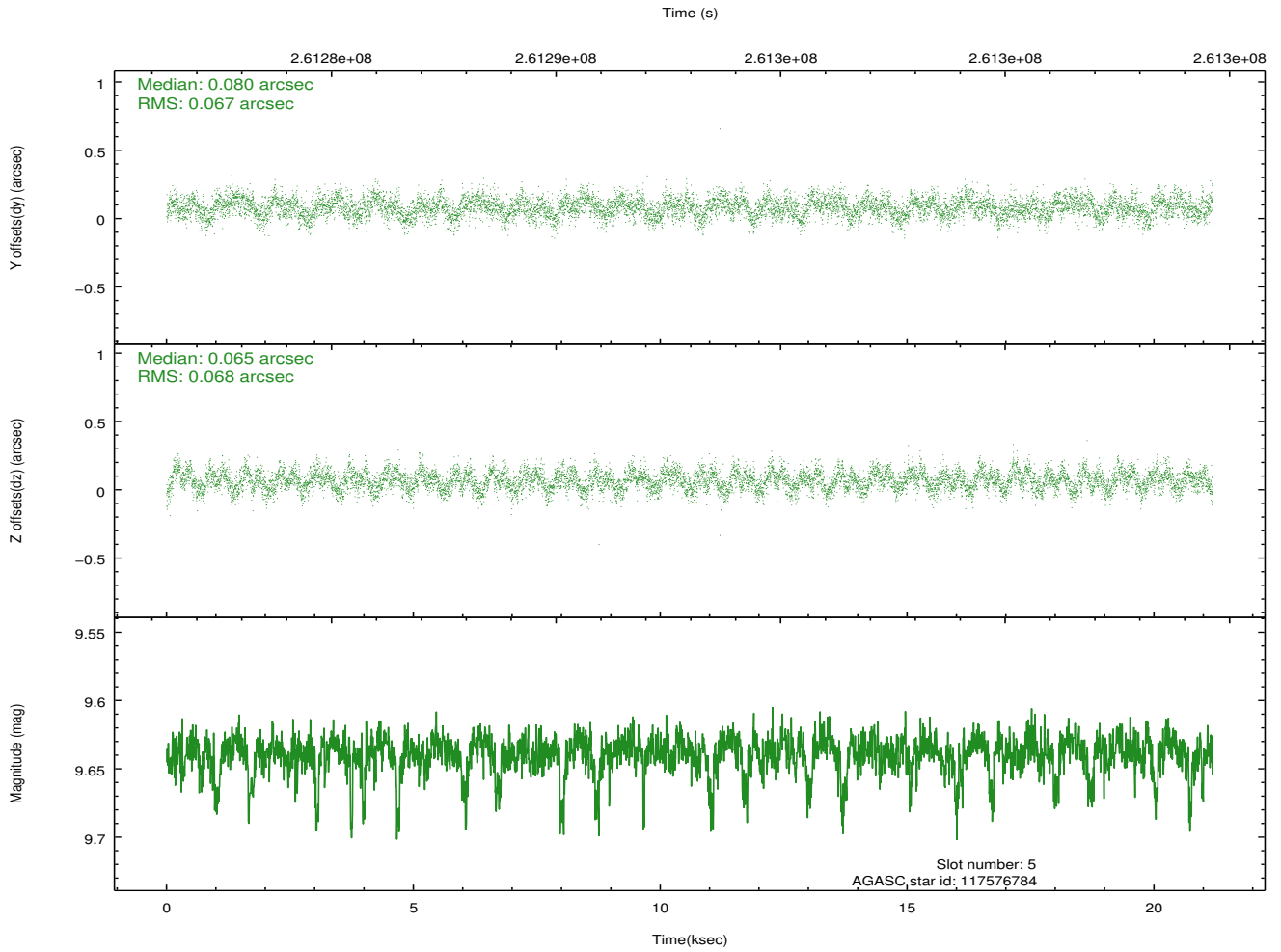
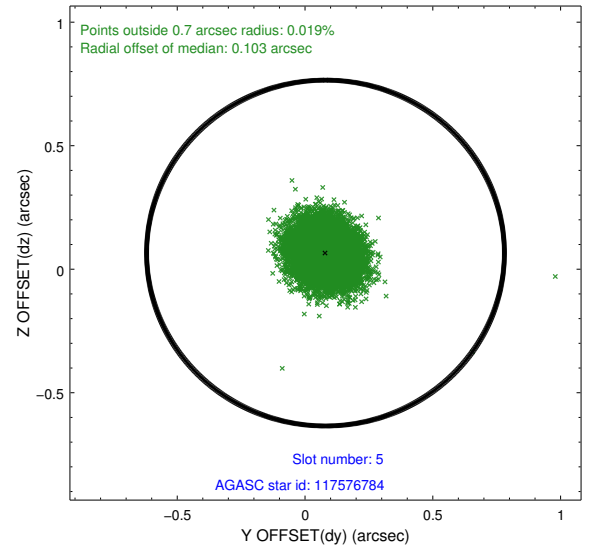
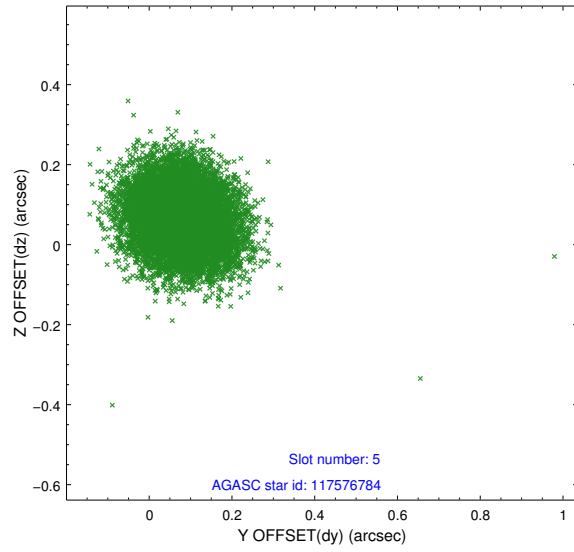


## 2.4.2 Slot 4

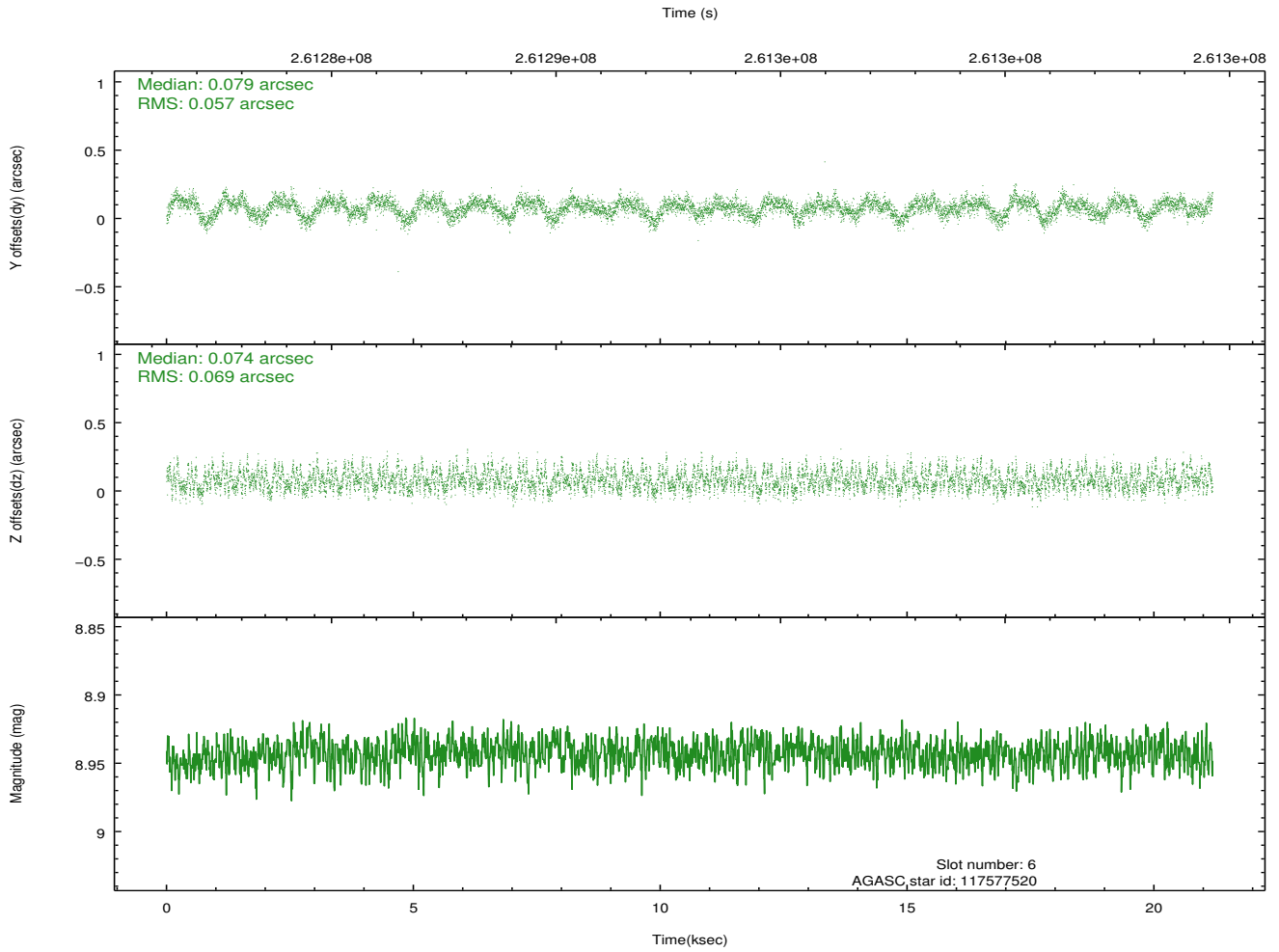
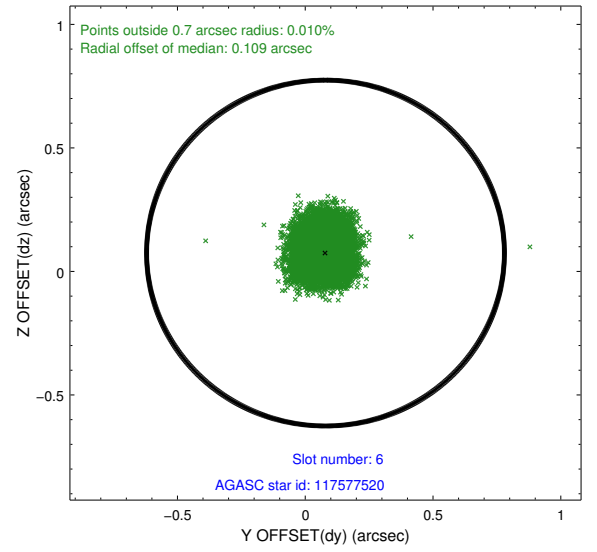
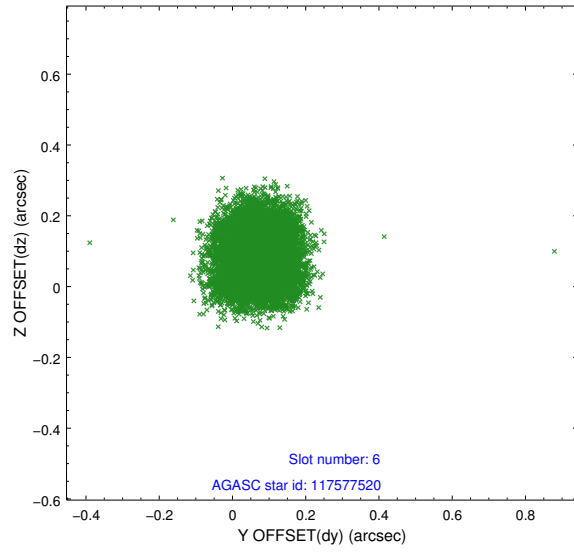




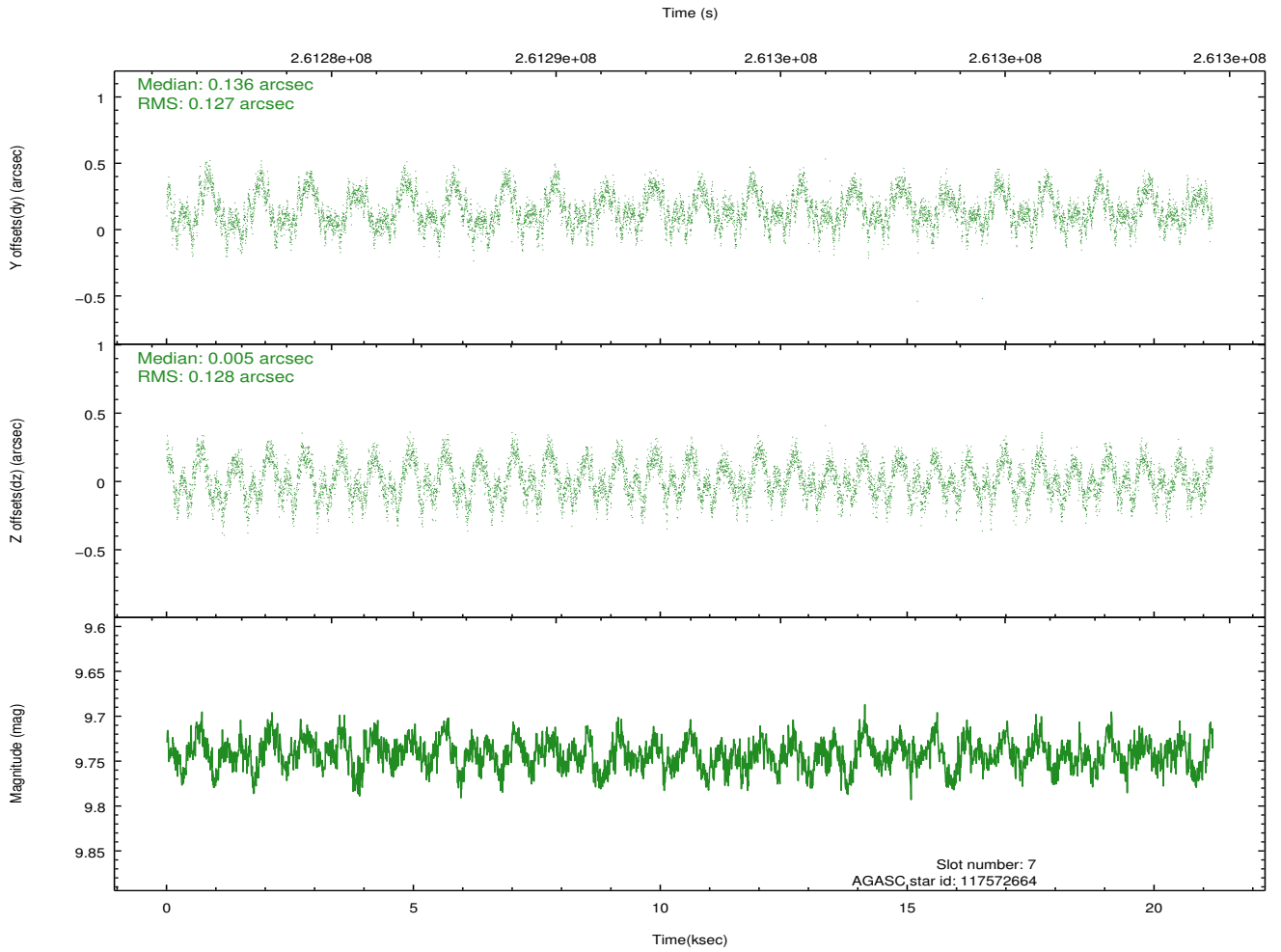
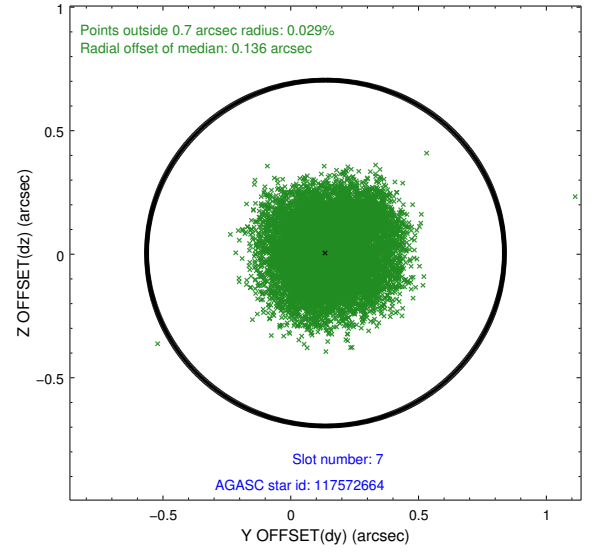
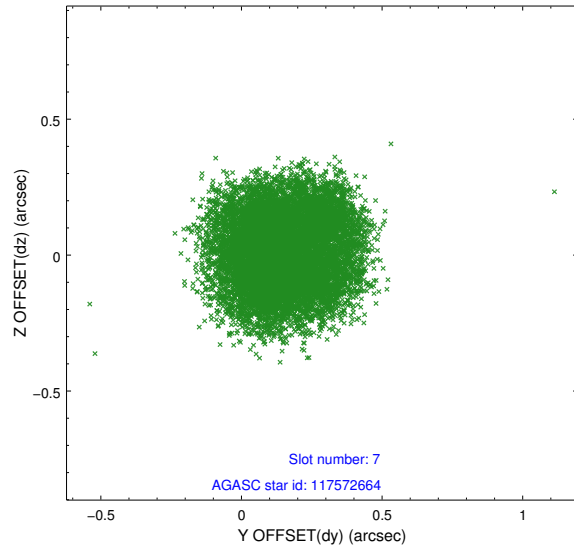
### 2.4.3 Slot 5



## 2.4.4 Slot 6

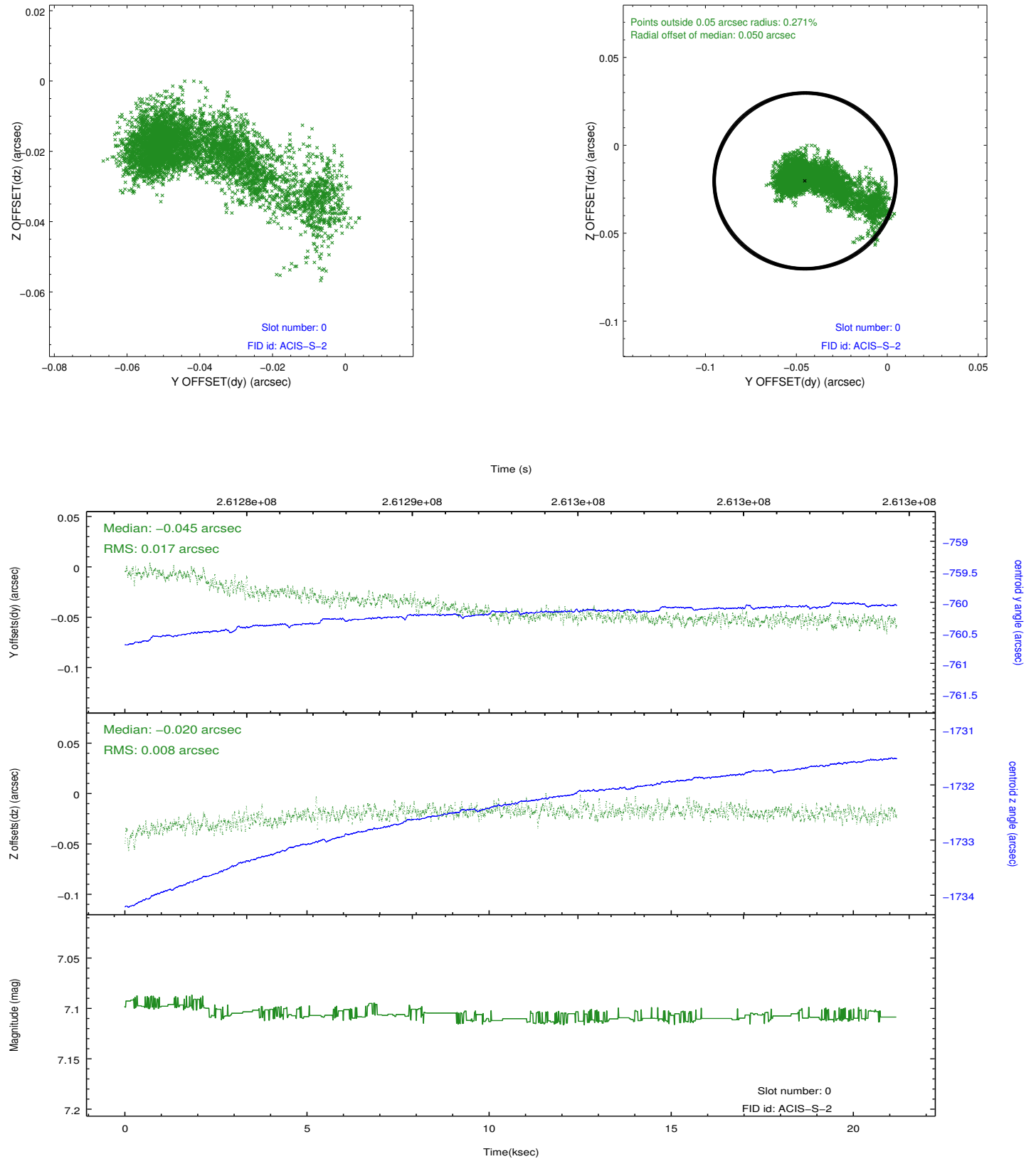


## 2.4.5 Slot 7

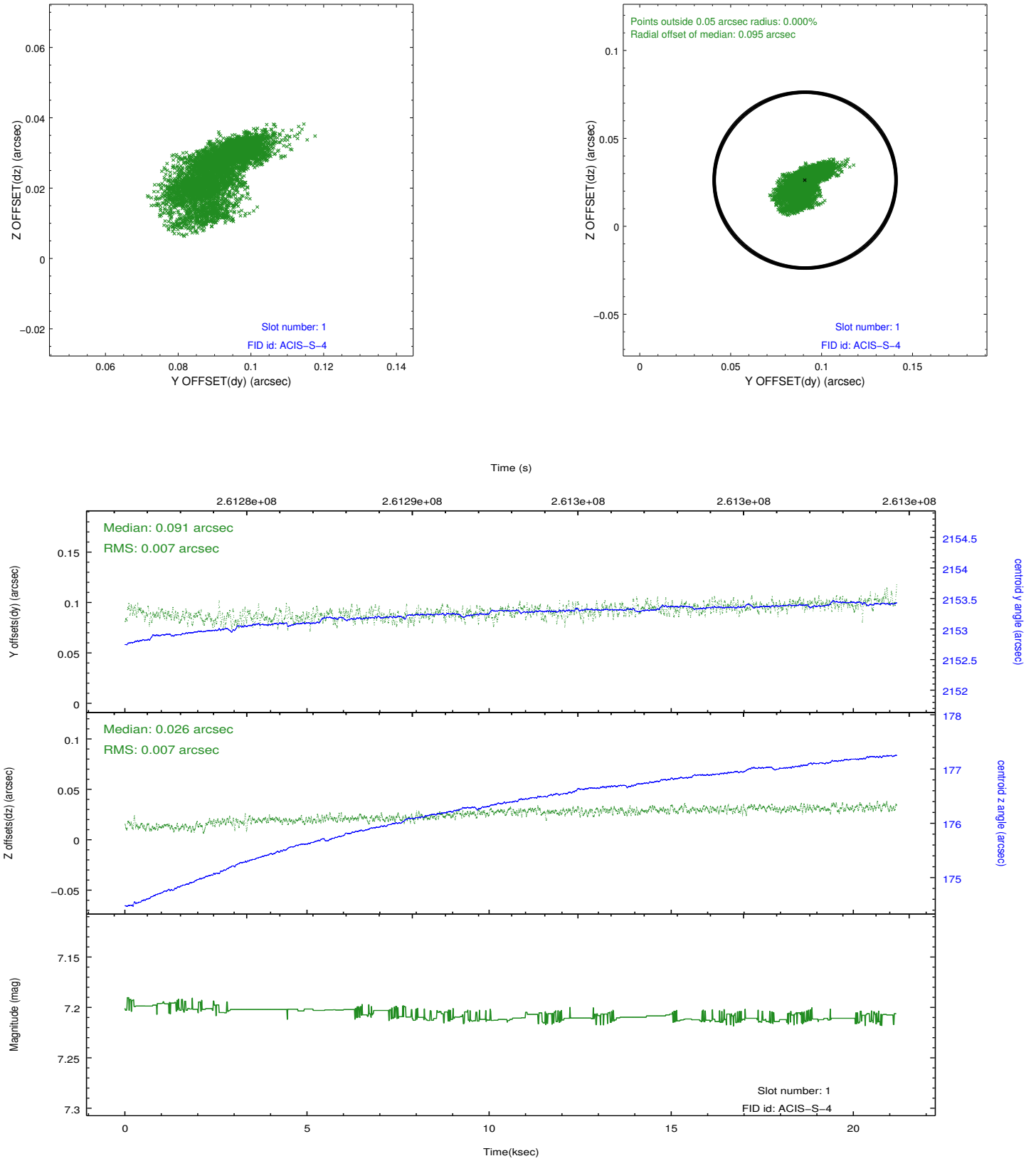


## 2.5 FID Slots

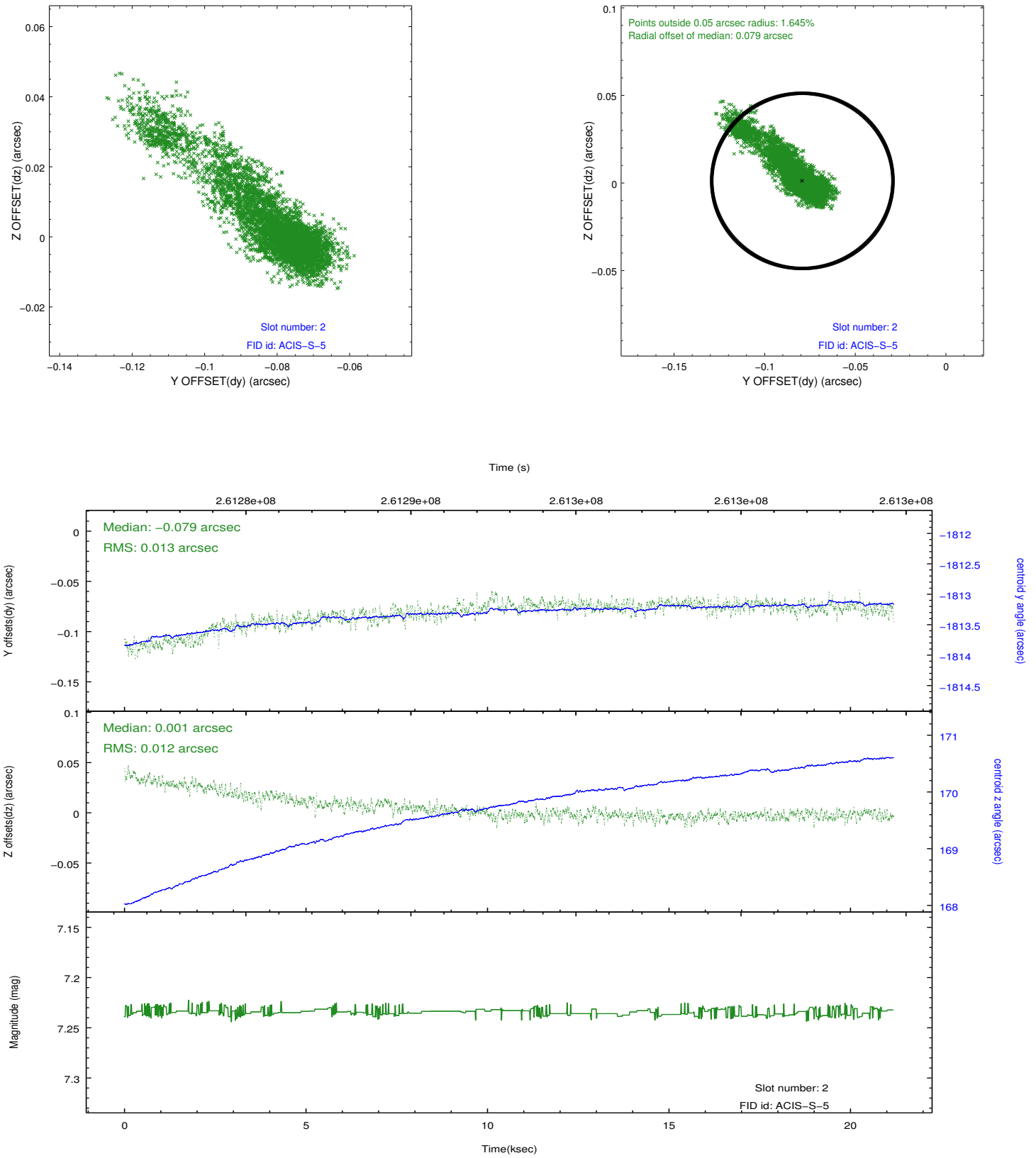
### 2.5.1 Slot 0



## 2.5.2 Slot 1



### 2.5.3 Slot 2



## A Summary

### A.1 Status

V&V Scientist	Beth Sundheim
V&V Date (YYYY-MM-DD)	2012.04.02
V&V Edition	1
V&V Disposition and Status	OK
V&V Charge Time	21.1822999

### A.2 Comments